

English

Translator Disclaimers

Search



STATE OF NEW JERSEY
PINELANDS COMMISSION



- Home
- About
- Pinelands National Reserve
- Rules
- Applications
- Planning
- Science
- Climate Change
- Information & Education
- PDC Bank

HOME / MAPS / PINELANDS INTERACTIVE MAP / PINELANDS PROPERTY MAPS

Home

[News & Notices](#) [Meetings](#) [Hearings](#) [Visit](#) [Maps](#) [Contact Us](#) [Presentations](#) [Images/Video](#)

[Municipal Council](#)

[Pinelands Interactive Map](#) | [Map Data](#) |

Pinelands Property Maps

The Pinelands Commission is pleased to offer two interactive maps that enable users to search properties by municipal block and lot or property address.

[Pinelands Property Lookup Map](#)

[Pinelands Interactive Map](#)

The Pinelands Commission is pleased to offer two interactive maps that enable users to search properties by municipal block and lot or property address.

The Pinelands Commission is pleased to offer two interactive maps that enable users to search properties by municipal block and lot or property address.

[Top](#)

Pinelands Property Lookup Map

Interested in a property and looking for more information?

(Launch Map

[HERE](#))

This **simplified, easy-to-use** map was created to answer these common property questions:

- Is the property in the Pinelands Area?
- Is the property in an area where an application to the Pinelands Commission is required?

Property Lookup Map

Block/Lot Search

Block/Lot Search Results

Block/Lot Search_Query result

Displayed features: 1/1

Property Information	Pemberton Township Block 846, Lot 1.01
Street Address	15 SPRINGFIELD RD
City	Pemberton Township
County	Burlington
In Pinelands Area	Yes
Application to Pinelands Commission Required	Yes
Municipal Zoning	PV
Municipal Zoning Office Phone Number	609-894-3340
Municipal Code Website	https://ecode360.com/11301525
Wetlands	No
Wetlands 300 Buffer	No

Approximate wetlands/buffer limits based on mapping. Field delineation required.

Wetlands and 300 foot Buffer

- What is the municipal zoning?
- What are the municipal zoning requirements (e.g. permitted uses, lot size)? (via Municipal Code Website Link)
- How do I contact the municipal zoning officer to discuss zoning requirements?
- Are there wetlands and/or wetland buffers?
- What is the Pinelands Management Area?

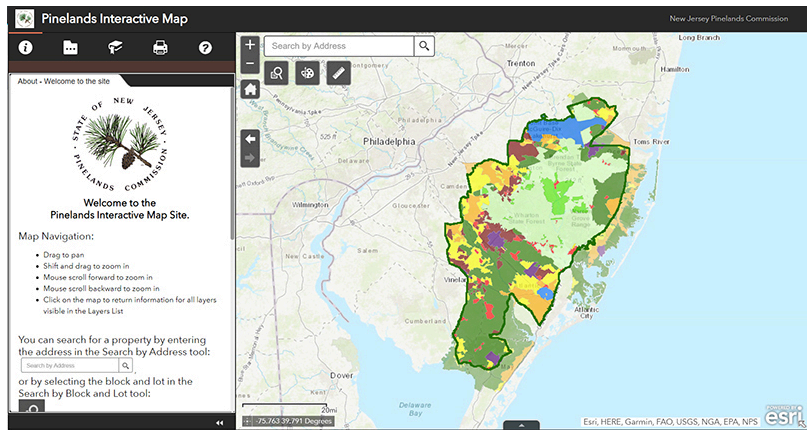
[Top](#)

Pinelands Interactive Map

This is a more complex mapping tool with greater functionality compared to the Property Lookup Map.
(Launch Map [HERE](#))

In addition to information contained in the Property Lookup Map, this map also includes:

- Permanent Land Protection Restrictions/Preserved Lands
- Color-coded municipal zoning districts
- 2020 Aerial Imagery
- Additional tools (e.g. measuring, drawing, printing)



[Top](#)

For technical assistance or to report a problem with the map, please contact Mark Delorenzo at Mark.Delorenzo@pinelands.nj.gov.

For development application or site specific questions, please contact Regulatory Programs staff at AppInfo@pinelands.nj.gov.

[Top](#)



[Contact Us](#) | [Privacy Notice](#) | [Legal Statement & Disclaimers](#) | [Accessibility Statement](#) 

[Pinelands: Pinelands Commission Home](#) | [About](#) | [Pinelands National Reserve](#) | [Rules](#) | [Applications](#) | [Planning](#) | [Science](#) | [Information & Education](#) | [PDC Bank](#)
 Statewide: [NJ Home](#) | [Services A to Z](#) | [Department/Agencies](#) | [FAQs](#)

Copyright © State of New Jersey, 2015 - 2026
 Pinelands Commission
 15 Springfield Road
 New Lisbon, NJ 08064
 609-894-7300