

*The New Jersey*  
**CONSTRUCTION  
REPORTER**

**OCTOBER 2012 DATA**

**CHRIS CHRISTIE, Governor**  
STATE OF NEW JERSEY

**RICHARD E. CONSTABLE III, Commissioner**  
DEPARTMENT OF COMMUNITY AFFAIRS

**EDWARD M. SMITH, Director**  
DIVISION OF CODES AND STANDARDS

DISTRIBUTED BY THE

*New Jersey Department of*  
**COMMUNITY AFFAIRS**  
DIVISION OF CODES AND STANDARDS  
101 South Broad Street,  
PO Box 802  
Trenton, NJ 08625-0802  
[www.nj.gov/dca/divisions/codes/reporter/](http://www.nj.gov/dca/divisions/codes/reporter/)



# THE NEW JERSEY CONSTRUCTION REPORTER

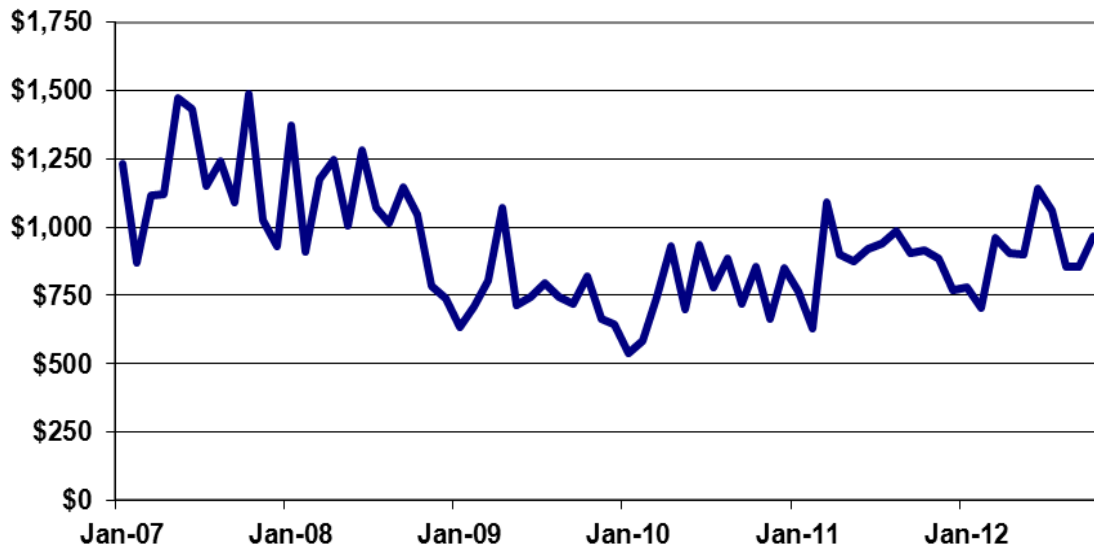
## TABLE OF CONTENTS

Contents	Description	Pages
<b>INTRODUCTION</b>		
Highlights	Analysis of data in this month's report	i-iv
Foreword	Background information	1
Exhibits A - C	Definition of terms used throughout the tables	2 - 4
<b>RESIDENTIAL CONSTRUCTION</b>		
Tables 1 - 6	Housing units authorized and certified, housing units demolished, monthly and year-to-date figures	5 - 14
<b>OFFICE SPACE</b>		
Tables 7 - 8	Square feet of office space authorized and certified, monthly and year-to-date figures	15 - 19
<b>RETAIL SPACE</b>		
Tables 9 - 10	Square feet of retail space authorized and certified, monthly and year-to-date figures	20 - 24
<b>DOLLAR AMOUNTS</b>		
Tables 11 - 13	Dollar amount of construction authorized by county and top municipalities, monthly and year to date; dollar amount of construction authorized by use group and permit type, New Jersey totals, monthly and year to date	25 - 30
<b>MUNICIPAL SUMMARY DATA</b>		
	Housing units authorized and certified, office and retail space authorized, and dollar amount of construction authorized by municipality, monthly totals	MSD-1 - MSD-12
<b>ILLUSTRATIONS</b>		
Map 1	Housing units authorized by municipality, year to date	9
Map 2	Office space authorized by municipality, year to date	18
Map 3	Retail space authorized by municipality, year to date	23
Map 4	Estimated cost of construction authorized by municipality, year to date	28

## OCTOBER 2012 HIGHLIGHTS

- Building permits for the month authorized \$931.5 million of construction in New Jersey; 541 of the State's 566 municipalities reported.
- The estimated cost of residential work was \$531.8 million. This was 58.2 percent of all activity.
- Office, retail, and other nonresidential work totaled \$389.8 million (41.8percent).

**Dollar Amount of Construction, January 2007  
through October 2012 (\$ in millions)**



- Jersey City in Hudson County had the most work in October, \$127.9 million. New home construction and home repair made up over 90 percent of this amount. The biggest project was a permit update for an additional \$108.8 million of work on Liberty Harbor North, a 422-unit condominium development begun in July of this year.
- South Brunswick in Middlesex County reported \$26.5 million of work, ranking second among localities. One of the bigger developments was a new warehouse and office complex with a total floor area in excess of 750,000 square feet. Other projects

were a \$4.1 million alteration to install solar panels and a \$2.1 million expansion of a senior center.

- Nearly all of the \$22.5 million of work in Howell Township, Monmouth County was for new homes or home improvements.
- Branchburg Township in Somerset County had \$19.7 million of work; \$17 million was for a renovation and expansion of an existing office building by the communications firm Verizon.
- Much of the \$18.8 million in Ewing Township (Mercer County) was for Princeton South, a new office complex.
- “State Buildings” includes building permits for work throughout New Jersey by public colleges and universities and other State government and special-purpose agencies. The dollar amount of work in October was \$30.5 million. Some of the bigger developments were for the New Jersey Turnpike Authority (\$7.8 million for a new salt dome), electrical renovation of a physical therapy center by the University of Medicine and Dentistry of New Jersey (\$6.5 million), and an interior renovation of an academic building by the College of New Jersey (\$6 million).

#### **Year to Date**

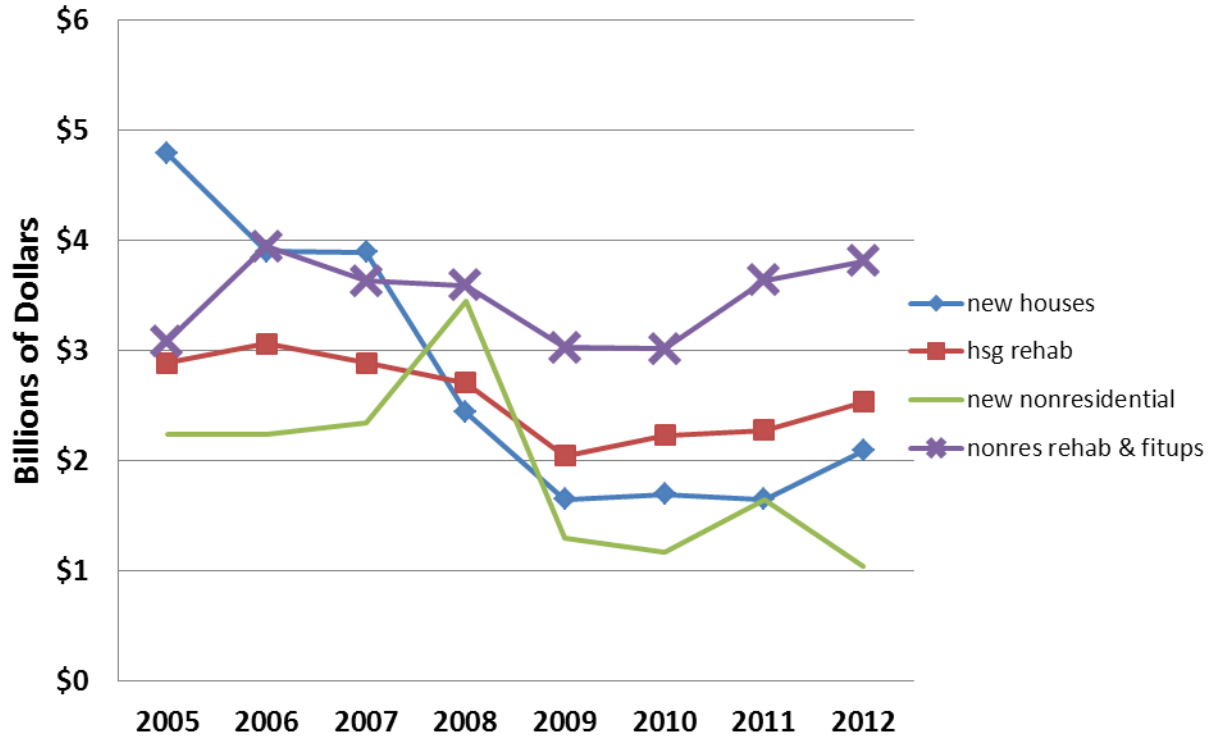
- Building permits issued between January and October 2012 authorized \$9.398 billion of construction. This was \$192.1 million more than the same ten months last year, an increase of 2.1 percent.
- New home construction and new office and retail space grew at faster rates.
- Nearly 3,500 more new homes were built between January and October 2012 compared to the same time last year, an increase of 38.5 percent.
- Office and retail activity is up by 51 and 31.6 percent, respectively.
- Jersey City and Newark (Essex County) had the most work between January and October 2012. Jersey City’s year-to-date total is \$337.1 million. Newark’s is \$267.6 million.
- Nearly 49 percent of all the work in Jersey City is for new dwellings. Jersey City’s construction office authorized 588 housing units since January. Only Fort Lee in Bergen County has more (788 authorized housing units).
- New homes construction also accounts for a lot of the work in Newark. The City’s construction office authorized 260 new dwellings between January and October, ranking 10<sup>th</sup> among municipalities. Other major developments are a regional headquarters for Panasonic and major expansions by Rutgers University, Newark

campus and the New Jersey Institute of Technology. Work also has started on 70 rental units by the New Community Corporation, one of the City's most active affordable housing developers.

- Hanover has \$142.5 million of construction. The biggest development in this Morris County township is for expansion and renovation of the old Bell Laboratories / Lucent Technology complex. The revamped office buildings will serve as the eastern headquarters of Bayer Pharmaceuticals.
- "State Buildings" account for \$290.6 million of activity from January through October 2012. Much of this was for improvements by public colleges and universities. Some of the bigger developments were on the main campus of Rutgers University, Kean University, and Rowan University.

<b>Major Construction Indicators, New Jersey: Ten-Month Comparisons</b>				
<b>Period</b>	<b>Estimated Cost of Construction</b>	<b>Authorized Housing Units</b>	<b>Authorized Office Space (square feet)</b>	<b>Authorized Retail Space (square feet)</b>
January – October 2012	\$9,397,653,915	12,922	6,718,230	1,854,221
January – October 2011	9,205,544,490	9,331	4,449,157	1,409,407
January – October 2010	8,107,889,667	9,571	4,247,383	1,956,506
January – October 2009	8,022,938,061	8,721	3,247,260	1,940,791
January – October 2008	12,177,829,064	14,260	6,884,966	5,144,205
January – October 2007	12,748,923,589	22,004	7,397,004	3,711,951
January – October 2006	13,144,183,527	26,681	9,574,824	4,595,944
January – October 2005	12,985,138,148	33,712	10,027,755	5,379,544
January – October 2004	11,459,646,185	32,344	9,713,290	4,492,364
<b>Difference Between 2011 and 2012</b>				
2011 – 2012	\$192,109,279	3,591	2,269,073	444,814
Percent Change	2.1%	38.5%	51.0%	31.6%
<b>Difference Between 2010 and 2011</b>				
2010 – 2011	\$1,097,654,823	-240	201,774	-547,099
Percent Change	13.5%	-2.5%	4.8%	-28.0%
<b>Difference Between 2009 and 2010</b>				
2009 – 2010	\$84,951,606	850	1,000,123	15,715
Percent Change	1.1%	9.7%	30.8%	0.8%
Source: N.J. Department of Community Affairs, 12/7/12				

### Estimated Dollar Value of Construction Authorized by Building Permits, January-October 2005-12



**T**HE NEW JERSEY CONSTRUCTION REPORTER contains statistics on construction activity in New Jersey. Information in the report comes from construction officials who administer the State Uniform Construction Code (UCC) (N.J.A.C. 5:23-1 et seq.) in New Jersey's 566 municipalities.

Each month, construction officials send to the New Jersey Department of Community Affairs (DCA) reports on the permits and certificates they issue. Permits authorize the start of construction and cover four types of activity: (1) New construction permits authorize the start of a new structure. (2) Permits for additions refer to work that will add space (volume and square feet) to an existing building. (3) Alterations also involve existing structures, but the work authorized will not add space. Typically, construction officials issue permits for alterations when the work is subject to one or more of the UCC's major subcodes (building, electrical, plumbing, fire protection). (4) Demolition permits authorize the removal of a building or some other structure. The *CONSTRUCTION REPORTER* identifies only those demolitions that will result in the loss of housing.

In addition to permits, the *CONSTRUCTION REPORTER* has information on the certificates issued by construction officials. While permits authorize the start of construction, certificates are issued for work completed and ready for occupancy. Each month, the *CONSTRUCTION REPORTER* will report on the number of housing units and the amount of office and retail space authorized for construction, along with the number of housing units and the amount of office and retail space completed.

### **Data Comparability**

The *CONSTRUCTION REPORTER* contains information on authorized housing units that is tabulated two different ways. The DCA tabulates Tables 1 through 3 and Tables 8 through 13 based on the use of buildings, defined in "groups" by New Jersey's UCC. Exhibit B on page 3 summarizes these groups.

Tables 4, 5, and 6 show authorized housing units as defined and tabulated by the United States Census Bureau. The New Jersey Department of Labor and Workforce Development prepares these tables for publication in the *CONSTRUCTION REPORTER*. Exhibit C on page 4 describes the housing definitions used by the Census Bureau.

The DCA series and the Census Bureau series on authorized housing units differ two important ways. First, the DCA series includes housing units created as a result of permits issued to alter or make additions to existing structures. The Census Bureau counts only those housing units authorized from permits issued for new construction.

Second, the Census Bureau imputes data for localities that fail to submit monthly reports on time. An asterisk in the Census column of data appearing in the Municipal Summary Data table at the back of the *CONSTRUCTION REPORTER* indicates those towns with imputed data. The Census Bureau bases these imputations on historic trends. The DCA series shows information for only those towns that submitted monthly reports. If a municipality failed to submit a monthly report on time, "No report" appears in the appropriate columns in the Municipal Summary Data table.

### **Additional Terms**

A number of other terms appear in the tables throughout the *CONSTRUCTION REPORTER*. Exhibit A on page 2 defines additional construction permit and certificate terms.

**Exhibit A**

<b>Summary of Building Permit and Certificate Terms</b>	
<b>Addition</b>	Permit type issued for construction work that adds space (volume and square feet) to an existing structure.
<b>Alteration</b>	Permit type involving one or more subcodes (building, electrical, fire protection, and plumbing). The work is authorized for an existing structure and does not add new space.
<b>Certificate</b>	A document issued by a construction official indicating completion of work for which a permit was issued.
<b>Dollar Amount of Construction</b>	Estimated cost of work, as reported by the permit applicant to the construction official.
<b>Demolition</b>	Permit type authorizing the demolition of an existing structure.
<b>Housing Units Certified</b>	A rental or for-sale unit completed and certified by the construction official for conforming to the standards in the New Jersey UCC.
<b>Housing Units Authorized by Building Permits</b>	A rental or for-sale dwelling unit authorized by a construction permit. See Exhibits B and C for explanations of the different definitions of housing structures. The Table 1 series and Tables 2 and 3 show housing units as classified by the residential use groups defined in Exhibit B. Tables 4, 5, and 6 identify authorized housing as defined by the U.S. Census Bureau. (See Exhibit C.)
<b>Housing Unit Demolitions</b>	Rental or for-sale housing to be demolished, as reported to the construction official by permit applicants.
<b>New Construction</b>	Permit type authorizing the start of a new structure.
<b>Permit</b>	A document issued by construction officials that authorizes the construction of a new structure or an addition, alteration, or demolition of an existing structure.
<b>Square Feet</b>	Estimated building area, as reported on permits for new construction and additions.
<b>State Buildings</b>	Buildings or structures constructed or owned by the State or any of its instrumentalities. Construction activity reported in this category includes State offices, colleges, hospitals, prisons, facilities operated by New Jersey Transit and the New Jersey Sports and Exposition Authority, and other State authorities.

**Exhibit B**

<b>Building Groups</b>	
<b>Residential</b>	Buildings where members of households live. Examples of residential groups include: one- and two-family houses (R-3 and R-5); apartments, dormitories, other multifamily houses (R-2); and mixed-use housing, where the house is a relatively smaller part of a building that has another use (e.g., an apartment over a store). Therapeutic residences (R-4) for 6 to 16 occupants are also included in this category. The Table 1 series and Tables 2 and 3 show authorized housing units by group definition.
----- <b>The following groups refer to industrial, commercial, and other nonresidential structures.</b> -----	
<b>Assembly</b>	Structures where people gather for civic, social, or religious purposes. Examples include: theaters and concert halls (group A-1); night clubs, dance halls, casino gaming areas, restaurants, taverns, and bars (A-2); churches, libraries, amusement arcades, community halls, gymnasiums, indoor swimming pools, art galleries, and museums (A-3); arenas, skating rinks, swimming pools, tennis courts (A-4); and grandstands, bleachers stadiums, and amusement park structures (A-5).
<b>Business</b>	Office buildings (group B) for business transactions of all kinds including banks, corporate offices, professional offices, government buildings, beauty shops, motor vehicle showrooms, and out-patient clinics.
<b>Educational</b>	Buildings for educational purposes through the 12th grade (group E).
<b>High Hazard</b>	Buildings used to manufacture, process, or store materials that constitute a high fire, explosion, or health hazard (group H).
<b>Hotels, Motels, Guest Houses</b>	Buildings for shelter and sleeping where the primary occupants use the facility on a temporary basis, staying less than 30 days (group R-1).
<b>Industrial</b>	Factory buildings where the occupants make, process, or assemble products that are not highly combustible, flammable, or explosive. Includes automotive, appliance, and furniture manufacturers; electric power plants; food processing plants; foundries; and water pumping, solid waste disposal, and incineration plants (group F).
<b>Institutional</b>	Buildings for people who suffer from physical limitations because of age or health; buildings for people detained for penal or correction purposes. Includes: supervised residential homes for six or more people (group I-1); medical and nursing-care facilities (I-2); jails, reformatories, and asylums (I-3); and day care for six or more occupants (I-4).
<b>Mercantile</b>	Buildings for display and sale purposes. Includes retail stores, automotive service stations, drug stores, shops, salesrooms, and markets (group M).
<b>Storage</b>	Buildings used to store goods that are not highly combustible or explosive. Includes warehouses, open parking garages, lumberyards, livestock shelters, and mausoleums (group S).
<b>Signs, Fences, Miscellaneous</b>	Accessory buildings and miscellaneous structures including fences over six feet in height, signs, private garages, sheds, agricultural buildings, carports, retaining walls, tanks, and swimming pools (group U).

**Exhibit C**

<b>Residential Structures (U.S. Census Bureau Definitions)</b>	
<p><b>Tables 4, 5, and 6 show authorized housing units based on the structure types defined below by the U.S. Census Bureau. The number of units shown in these tables refers to those authorized by building permits issued for new construction only.</b></p>	
<p><b>Single-Family Houses</b></p>	<p>Include all detached one-family houses and all attached one-family houses separated by a wall that extends from ground to roof with no common heating system or inter-structural public utilities. Include prefabricated, sectionalized, panelized, and modular homes that are manufactured partially off site, but are transported and assembled at the construction site.</p>
<p><b>Two-Family Buildings</b></p>	<p>Include all buildings with two housing units that may be above one another or side by side. If built side by side, the structures (1) do not have a wall that extends from ground to roof; or (2) share a heating system; or (3) have inter-structural public utilities, such as water supply and sewage disposal.</p>
<p><b>Three- and Four-Family Buildings</b></p>	<p>Include all buildings with three or four housing units. If built side by side, the structures (1) do not have a wall that extends from ground to roof; or (2) share a heating system; or (3) have inter-structural public utilities, such as water supply and sewage disposal.</p>
<p><b>Five-or-More-Family Buildings</b></p>	<p>Include all buildings with five or more housing units. If built side by side, the structures (1) do not have a wall that extends from ground to roof; or (2) share a heating system; or (3) have inter-structural public utilities, such as water supply and sewage disposal.</p>
<p><b>Private Housing Units</b></p>	<p>Housing owned by a private company or individual during the period of construction. This includes all housing built by nonprofit organizations and "turnkey" housing; for example, housing that will be sold to a local public housing authority when completed.</p>
<p><b>Public Housing Units</b></p>	<p>Housing owned by a governmental body during the period of construction.</p>

**Table 1a** HOUSE 12/7/12

Housing Units Authorized by Building Permits: New Jersey Counties, October 2012								
County	October				Year to Date			
	Total	1 & 2 Family	Multifamily	Mixed Use	Total	1 & 2 Family	Multifamily	Mixed Use
ATLANTIC	43	40	0	3	354	338	12	4
BERGEN	45	42	3	0	1,635	361	1,271	3
BURLINGTON	23	23	0	0	395	284	110	1
CAMDEN	18	18	0	0	521	118	403	0
CAPE MAY	58	58	0	0	385	371	12	2
CUMBERLAND	11	8	3	0	108	103	5	0
ESSEX	183	15	168	0	757	175	582	0
GLOUCESTER	63	63	0	0	394	394	0	0
HUDSON	53	1	52	0	2,373	67	2,306	0
HUNTERDON	7	7	0	0	71	45	25	1
MERCER	178	14	162	2	419	118	299	2
MIDDLESEX	156	63	93	0	917	566	347	4
MONMOUTH	149	62	87	0	880	553	320	7
MORRIS	40	40	0	0	521	321	194	6
OCEAN	185	98	87	0	1,313	1,018	295	0
PASSAIC	13	3	10	0	258	68	189	1
SALEM	5	5	0	0	49	49	0	0
SOMERSET	46	46	0	0	831	301	530	0
SUSSEX	8	7	0	1	79	60	18	1
UNION	12	12	0	0	617	225	392	0
WARREN	2	2	0	0	45	43	2	0
STATE BUILDINGS*	0	0	0	0	0	0	0	0
<b>NEW JERSEY</b>	<b>1,298</b>	<b>627</b>	<b>665</b>	<b>6</b>	<b>12,922</b>	<b>5,578</b>	<b>7,312</b>	<b>32</b>
NJ 2011 12/7/11	1,022	513	416	93	9,331	5,027	3,894	410

The definition of housing units in the Table 1 series and Table 2 do not match those in Tables 4, 5, and 6. See "Data Comparability" section on page 1, and Exhibits B and C on pages 3 and 4 for details.

\*State buildings refer to structures owned or constructed by the State or any of its instrumentalities. See Exhibit A, Summary of Building Permit and Certificate Terms, on page 2.

**Table 1b** HSEMUN1 12/7/12

Housing Units Authorized by Building Permits: Top Municipalities, October 2012						
Rank	Municipality	County	Total	1 & 2 Family	Multifamily	Mixed Use
1	Barnegat Township	Ocean	78	5	73	0
2	East Orange City	Essex	74	9	65	0
3	Long Branch City	Monmouth	69	2	67	0
4	Maplewood Township	Essex	64	1	63	0
5	Hopewell Township	Mercer	60	0	60	0
6	Ewing Township	Mercer	49	1	48	0
7	Sayreville Borough	Middlesex	48	1	47	0
8	Jersey City	Hudson	47	1	46	0
9	Robbinsville Township	Mercer	41	2	39	0
10	Newark City	Essex	40	0	40	0
11	Piscataway Township	Middlesex	38	8	30	0
12	Howell Township	Monmouth	31	11	20	0
13	Monroe Township	Middlesex	23	23	0	0
14	South Brunswick Township	Middlesex	22	6	16	0
15	Mount Olive Township	Morris	21	21	0	0
16	Monroe Township	Gloucester	19	19	0	0
17	Franklin Township	Somerset	19	19	0	0
18	Hillsborough Township	Somerset	16	16	0	0
19	Margate City	Atlantic	15	15	0	0
20	West Windsor Township	Mercer	15	0	15	0
	<b>TOP MUNICIPALITIES</b>		711	155	556	0
	<b>NEW JERSEY</b>		1,298	627	665	6
	<b>TOP AS % OF STATE</b>		54.8%	24.7%	83.6%	N/A

The definition of housing units in the Table 1 series and Table 2 do not match those in Tables 4, 5, and 6. See "Data Comparability" section on page 1, and Exhibits B and C on pages 3 and 4 for details.

**Table 1c** HSEMUN2 12/7/12

Housing Units Authorized by Building Permits: Top Municipalities, January through October 2012						
Rank	Municipality	County	Total	1 & 2 Family	Multifamily	Mixed Use
1	Fort Lee Borough	Bergen	788	20	768	0
2	Jersey City	Hudson	599	25	574	0
3	Franklin Township	Somerset	494	128	366	0
4	Cherry Hill Township	Camden	364	12	352	0
5	Weehawken Township	Hudson	355	0	355	0
6	Lakewood Township	Ocean	347	333	14	0
7	Harrison Town	Hudson	340	14	326	0
8	West New York Town	Hudson	321	2	319	0
9	Cliffside Park Borough	Bergen	307	7	300	0
10	Secaucus Town	Hudson	273	3	270	0
11	Newark City	Essex	260	19	241	0
12	Howell Township	Monmouth	257	87	170	0
13	Monroe Township	Middlesex	242	222	20	0
14	Hoboken City	Hudson	229	4	225	0
15	Piscataway Township	Middlesex	194	100	94	0
16	Barnegat Township	Ocean	182	51	131	0
17	Rahway City	Union	173	2	171	0
18	Bayonne City	Hudson	160	12	148	0
19	Raritan Borough	Somerset	158	2	156	0
20	Woodbridge Township	Middlesex	144	24	120	0
	<b>TOP MUNICIPALITIES</b>		6,187	1,067	5,120	0
	<b>NEW JERSEY</b>		12,922	5,578	7,312	32
	<b>TOP AS % OF STATE</b>		47.9%	19.1%	70.0%	0.0%

The definition of housing units in the Table 1 series and Table 2 do not match those in Tables 4, 5, and 6. See "Data Comparability" section on page 1, and Exhibits B and C on pages 3 and 4 for details.

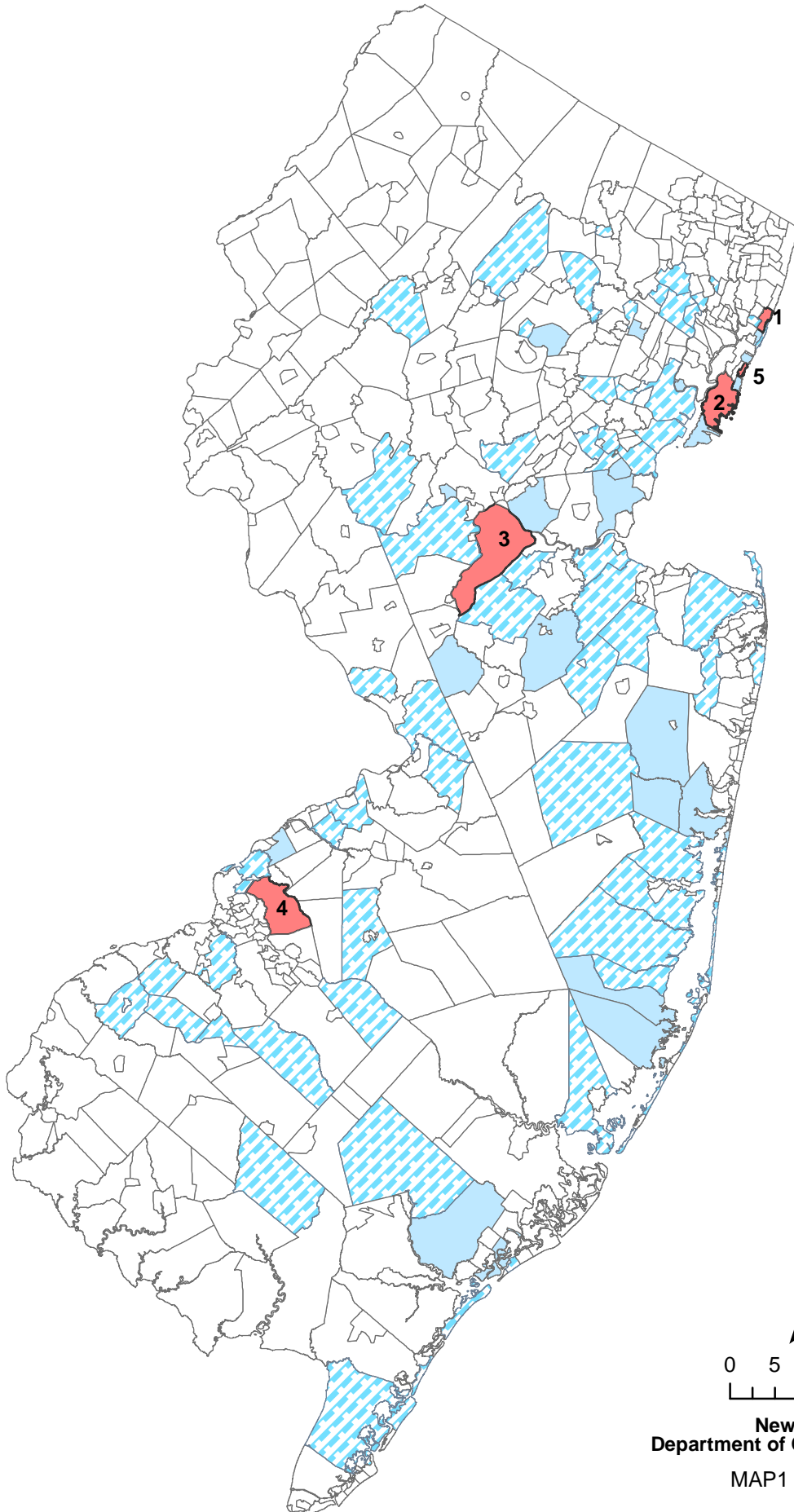
**Table 1d** NEWHSE 12/7/12

Housing Units Authorized by New Construction Building Permits: New Jersey Counties, October 2012								
County	October				Year to Date			
	Total	1 & 2 Family	Multifamily	Mixed Use	Total	1 & 2 Family	Multifamily	Mixed Use
ATLANTIC	41	40	0	1	347	333	12	2
BERGEN	43	40	3	0	1,507	355	1,151	1
BURLINGTON	23	23	0	0	388	278	110	0
CAMDEN	18	18	0	0	515	112	403	0
CAPE MAY	56	56	0	0	373	360	12	1
CUMBERLAND	7	7	0	0	94	93	1	0
ESSEX	182	14	168	0	754	172	582	0
GLOUCESTER	63	63	0	0	393	393	0	0
HUDSON	53	1	52	0	2,350	65	2,285	0
HUNTERDON	7	7	0	0	70	44	25	1
MERCER	176	14	162	0	417	118	299	0
MIDDLESEX	155	62	93	0	910	563	347	0
MONMOUTH	82	59	23	0	810	547	256	7
MORRIS	40	40	0	0	520	320	194	6
OCEAN	183	96	87	0	1,294	999	295	0
PASSAIC	13	3	10	0	257	67	189	1
SALEM	5	5	0	0	48	48	0	0
SOMERSET	45	45	0	0	829	299	530	0
SUSSEX	8	7	0	1	78	59	18	1
UNION	12	12	0	0	605	218	387	0
WARREN	2	2	0	0	45	43	2	0
STATE BUILDINGS*	0	0	0	0	0	0	0	0
<b>NEW JERSEY</b>	<b>1,214</b>	<b>614</b>	<b>598</b>	<b>2</b>	<b>12,604</b>	<b>5,486</b>	<b>7,098</b>	<b>20</b>
NJ 2011 12/7/11	1,013	508	416	89	9,133	4,959	3,774	400

The definition of housing units in the Table 1 series and Table 2 do not match those in Tables 4, 5, and 6. See "Data Comparability" section on page 1, and Exhibits B and C on pages 3 and 4 for details.

\*State buildings refer to structures owned or constructed by the State or any of its instrumentalities. See Exhibit A, Summary of Building Permit and Certificate Terms, on page 2.





You are viewing an Archived Copy from the New Jersey State Library  
**Housing Units Authorized by Building Permits  
January-September 2012**



1. Fort Lee  
785 units  
BERGEN CO.
2. Jersey City  
552 units  
HUDSON CO.
3. Franklin  
475 units  
SOMERSET CO.
4. Cherry Hill  
362 units  
CAMDEN CO.
5. Weehawken  
355 units  
HUDSON CO.

**NJ Municipalities**

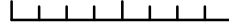
**Housing Units**

-  less than 25
-  25 to 99
-  100 to 349
-  350 to 785

N



0 5 10 20 Miles



New Jersey  
Department of Community Affairs

MAP1 11/7/12

**Table 2** CERTS 12/7/12

Housing Units Certified: New Jersey Counties, October 2012								
County	October				Year to Date			
	Total	1 & 2 Family	Multi-family	Mixed Use	Total	1 & 2 Family	Multi-family	Mixed Use
ATLANTIC	135	28	107	0	491	304	182	5
BERGEN	35	27	5	3	777	339	432	6
BURLINGTON	35	34	1	0	352	284	68	0
CAMDEN	109	13	96	0	471	148	323	0
CAPE MAY	25	25	0	0	424	397	26	1
CUMBERLAND	5	4	1	0	108	105	1	2
ESSEX	44	9	35	0	455	131	324	0
GLOUCESTER	27	27	0	0	455	426	25	4
HUDSON	28	7	21	0	941	50	891	0
HUNTERDON	1	1	0	0	91	52	39	0
MERCER	67	6	61	0	260	88	172	0
MIDDLESEX	117	56	61	0	889	508	380	1
MONMOUTH	65	57	8	0	642	486	154	2
MORRIS	26	22	4	0	338	216	122	0
OCEAN	97	83	13	1	1,215	936	276	3
PASSAIC	79	10	69	0	233	55	177	1
SALEM	3	3	0	0	49	47	0	2
SOMERSET	42	17	25	0	429	219	209	1
SUSSEX	10	10	0	0	63	63	0	0
UNION	15	15	0	0	477	180	296	1
WARREN	9	9	0	0	79	75	4	0
STATE BUILDINGS*	0	0	0	0	0	0	0	0
<b>NEW JERSEY</b>	<b>974</b>	<b>463</b>	<b>507</b>	<b>4</b>	<b>9,239</b>	<b>5,109</b>	<b>4,101</b>	<b>29</b>
NJ 2011 12/7/11	1,265	518	737	0	8,134	5,010	3,085	39

The definition of housing units in the Table 1 series and Table 2 do not match those in Tables 4, 5, and 6. See "Data Comparability" section on page 1, and Exhibits B and C on pages 3 and 4 for details.

\*State buildings refer to structures owned or constructed by the State or any of its instrumentalities. See Exhibit A, Summary of Building Permit and Certificate Terms, on page 2.

**Table 3** DEMOS 12/7/12

Housing Units Demolished: New Jersey Counties, October 2012								
County	October				Year to Date			
	Total	1 & 2 Family	Multifamily	Mixed Use	Total	1 & 2 Family	Multifamily	Mixed Use
ATLANTIC	18	17	0	1	141	136	1	4
BERGEN	23	23	0	0	256	238	8	10
BURLINGTON	5	5	0	0	77	74	1	2
CAMDEN	29	29	0	0	182	180	2	0
CAPE MAY	63	63	0	0	234	230	4	0
CUMBERLAND	2	2	0	0	33	33	0	0
ESSEX	3	3	0	0	85	73	11	1
GLOUCESTER	4	3	1	0	38	36	1	1
HUDSON	9	0	9	0	133	59	74	0
HUNTERDON	3	3	0	0	25	24	0	1
MERCER	6	3	3	0	138	68	70	0
MIDDLESEX	4	4	0	0	123	74	45	4
MONMOUTH	159	23	136	0	401	239	144	18
MORRIS	8	7	0	1	123	119	2	2
OCEAN	54	53	1	0	333	327	1	5
PASSAIC	3	3	0	0	99	65	27	7
SALEM	1	1	0	0	20	20	0	0
SOMERSET	4	4	0	0	51	51	0	0
SUSSEX	0	0	0	0	25	24	0	1
UNION	15	12	3	0	174	85	84	5
WARREN	2	2	0	0	15	14	0	1
STATE BUILDINGS*	0	0	0	0	0	0	0	0
<b>NEW JERSEY</b>	<b>415</b>	<b>260</b>	<b>153</b>	<b>2</b>	<b>2,706</b>	<b>2,169</b>	<b>475</b>	<b>62</b>
NJ 2011 12/7/11	330	264	54	12	2,450	2,084	306	60

\*State buildings refer to structures owned or constructed by the State or any of its instrumentalities. See Exhibit A, Summary of Building Permit and Certificate Terms, on page 2.

**Table 4**

<b>Residential Construction Authorized by Building Permits, (Census Definitions) New Jersey, October 2012</b>						
<b>Type of Construction</b>	<b>September 2012</b>	<b>October 2012</b>	<b>Year to Date*</b>			
			<b>2011</b>	<b>2012</b>	<b>Change</b>	
					<b>Number</b>	<b>Percent</b>
Total Private Units Authorized	1,548	1,643	10,627	14,660	4,033	38.0
Single Family	547	796	5,421	6,087	666	12.3
Two Family	40	40	362	462	100	27.6
Three or Four Family	18	28	149	334	185	124.2
Five or More Family	943	779	4,695	7,777	3,082	65.6
CENSUS1 7/20/01						

\*Year-to-date totals include data received too late for monthly tabulation. The Census Bureau allocates revisions to prior months and therefore monthly year-to-date totals reflect these changes.

Authorized dwelling units in the Table 1 series and Table 2 do not match those in Tables 4, 5, and 6 due to definitional differences. See "Data Comparability" section on page 1, and Exhibits B and C on pages 3 and 4 for details.

Source: U.S. Census Bureau, Manufacturing and Construction Division  
 Prepared by: N.J. Department of Labor and Workforce Development, November, 2012

**Table 5**

You Are Viewing an Archived Copy from the New Jersey State Library

<b>Residential Construction Authorized by Building Permits (Census Definitions) New Jersey, 1991 to Present</b>						
<b>Year and Month</b>	<b>Number of Municipalities</b>	<b>Total</b>	<b>Single Family</b>	<b>Two Family</b>	<b>3 or 4 Family</b>	<b>5 or More Family</b>
1991	567	14,856	12,869	402	101	1,484
1992	567	19,072	16,506	510	74	1,982
1993	567	25,188	21,340	758	129	2,961
1994	567	25,388	22,437	722	121	2,108
1995	567	21,521	18,341	670	158	2,352
1996	567	24,173	20,853	880	211	2,229
1997	566	28,018	23,472	916	324	3,306
1998	566	31,345	25,459	1,172	221	4,493
1999	566	31,976	25,129	1,468	290	5,089
2000	566	34,585	25,260	1,844	305	7,176
2001	566	28,267	21,503	1,827	779	4,158
2002	566	30,441	22,379	2,110	742	5,210
2003	566	32,984	22,163	2,870	912	7,039
2004	566	35,936	22,429	3,300	1,476	8,731
2005	566	38,588	22,264	3,212	1,437	11,675
2006	566	34,323	17,113	3,088	1,708	12,414
2007	566	25,389	13,066	1,692	1,311	9,320
2008	566	18,363	9,169	664	411	8,119
2009	566	12,421	7,211	400	206	4,604
2010	566	13,540	7,383	680	276	5,201
2011	566	13,079	6,509	438	178	5,954
2012						
January <sup>‡</sup>	566	923	413	38	3	469
February <sup>‡</sup>	566	1,170	468	32	75	595
March <sup>‡</sup>	566	1,265	588	42	15	620
April <sup>‡</sup>	566	1,572	687	62	26	797
May <sup>‡</sup>	566	1,184	649	34	12	489
June <sup>‡</sup>	566	2,056	664	40	12	1,340
July <sup>‡</sup>	566	1,909	635	98	27	1,149
August <sup>‡</sup>	566	1,390	640	36	118	596
September <sup>‡</sup>	566	1,548	547	40	18	943
October	566	1,643	796	40	28	779
<u>Year to Date*</u>						
October 2011	---	10,627	5,421	362	149	4,695
October 2012	---	14,660	6,087	462	334	7,777

<sup>‡</sup>Revised – Monthly data are revised to reflect changes in the year-to-date total.

\*Year-to-date totals include data received too late for monthly tabulation. The Census Bureau allocates revisions to prior months and therefore monthly year-to-date totals reflect these changes.

Authorized dwelling units in the Table 1 series and Table 2 do not match those in Tables 4, 5, and 6 due to definitional differences. See "Data Comparability" section on page 1, and Exhibits B and C on pages 3 and 4 for details.

Source: U.S. Census Bureau, Manufacturing and Construction Division

Prepared by: N.J. Department of Labor and Workforce Development, November, 2012

**Table 6**

<b>Residential Construction Authorized by Building Permits (Census Definitions) New Jersey Counties, 2012</b>						
<b>County</b>	<b>October</b>					<b>Total Year to Date* 2012</b>
	<b>Total</b>	<b>Single Family</b>	<b>Two Family</b>	<b>3 or 4 Family</b>	<b>5 or More Family</b>	
ATLANTIC	47	47	0	0	0	<b>367</b>
BERGEN	148	67	8	6	67	<b>1,900</b>
BURLINGTON	65	39	0	0	26	<b>597</b>
CAMDEN	56	33	0	0	23	<b>822</b>
CAPE MAY	53	43	10	0	0	<b>362</b>
CUMBERLAND	15	15	0	0	0	<b>162</b>
ESSEX	147	20	0	3	124	<b>1,077</b>
GLOUCESTER	61	61	0	0	0	<b>452</b>
HUDSON	155	5	4	0	146	<b>1,866</b>
HUNTERDON	16	7	4	0	5	<b>153</b>
MERCER	187	10	4	0	173	<b>386</b>
MIDDLESEX	200	83	2	16	99	<b>1,086</b>
MONMOUTH	87	69	0	3	15	<b>906</b>
MORRIS	76	61	0	0	15	<b>768</b>
OCEAN	156	130	6	0	20	<b>1,053</b>
PASSAIC	33	13	0	0	20	<b>431</b>
SALEM	4	4	0	0	0	<b>52</b>
SOMERSET	54	44	0	0	10	<b>1,006</b>
SUSSEX	17	12	0	0	5	<b>191</b>
UNION	49	21	2	0	26	<b>853</b>
WARREN	17	12	0	0	5	<b>170</b>
<b>NEW JERSEY</b>	<b>1,643</b>	<b>796</b>	<b>40</b>	<b>28</b>	<b>779</b>	<b>14,660</b>

CENSUS3 7/20/01

\*Year-to-date totals include data received too late for monthly tabulation. See Table 5 for revised statewide data for prior months.

Authorized dwelling units in the Table 1 series and Table 2 do not match those in Tables 4, 5, and 6 due to definitional differences. See "Data Comparability" section on page 1, and Exhibits B and C on pages 3 and 4 for details.

Source: U.S. Census Bureau, Manufacturing and Construction Division  
Prepared by: N.J. Department of Labor and Workforce Development, November, 2012

**Table 7a** OFFCSPC 12/7/12

Office Square Feet Authorized by Building Permits: New Jersey Counties, October 2012						
County	October			Year to Date		
	Total	New Construction	Additions	Total	New Construction	Additions
ATLANTIC	0	0	0	77,859	62,109	15,750
BERGEN	15,427	0	15,427	434,306	301,099	133,207
BURLINGTON	0	0	0	316,035	306,707	9,328
CAMDEN	24,615	24,615	0	166,801	126,706	40,095
CAPE MAY	0	0	0	45,540	41,966	3,574
CUMBERLAND	3,295	3,295	0	14,382	8,695	5,687
ESSEX	1,116	0	1,116	408,564	383,356	25,208
GLOUCESTER	7,590	7,590	0	47,649	35,813	11,836
HUDSON	48,497	48,497	0	329,951	329,951	0
HUNTERDON	358	0	358	49,668	26,549	23,119
MERCER	2,382	2,382	0	408,950	408,655	295
MIDDLESEX	830,166	815,165	15,001	2,314,336	2,119,685	194,651
MONMOUTH	44,582	2,751	41,831	143,421	74,086	69,335
MORRIS	17,973	12,816	5,157	546,466	266,206	280,260
OCEAN	9,310	9,310	0	364,151	302,419	61,732
PASSAIC	8,566	0	8,566	341,330	294,715	46,615
SALEM	460	460	0	5,980	5,260	720
SOMERSET	98,768	0	98,768	201,496	98,930	102,566
SUSSEX	2,466	2,466	0	18,957	18,381	576
UNION	0	0	0	322,561	48,577	273,984
WARREN	0	0	0	14,674	5,705	8,969
STATE BUILDINGS*	0	0	0	145,153	145,153	0
<b>NEW JERSEY</b>	<b>1,115,571</b>	<b>929,347</b>	<b>186,224</b>	<b>6,718,230</b>	<b>5,410,723</b>	<b>1,307,507</b>
NJ 2011 12//7/11	301,595	262,711	38,884	4,449,157	3,794,863	654,294

\*State buildings refer to structures owned or constructed by the State or any of its instrumentalities. See Exhibit A, Summary of Building Permit and Certificate Terms, on page 2.

**Table 7b** OFFCMUN1 12/7/12

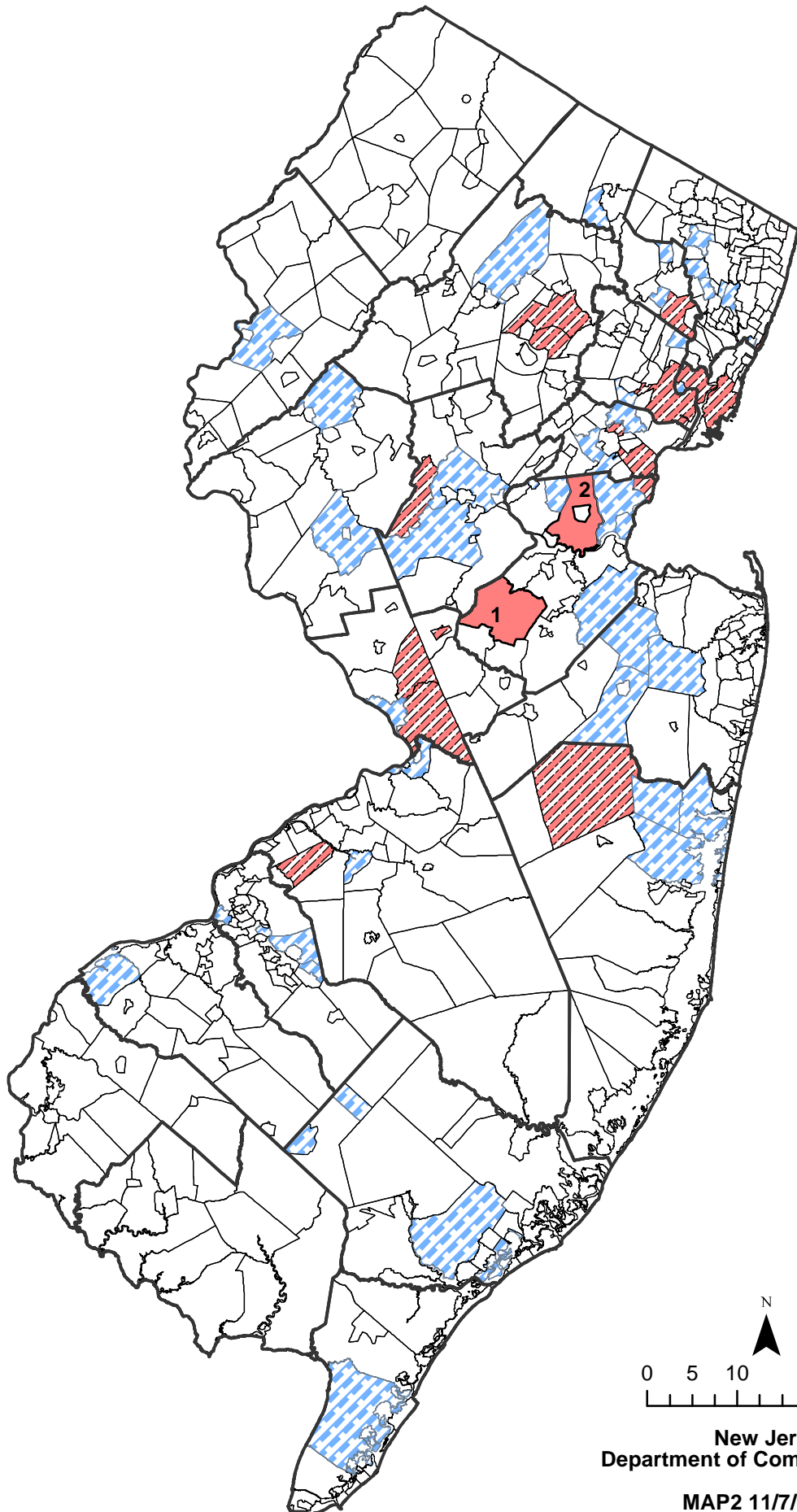
Office Square Feet Authorized by Building Permits: New Jersey Top Municipalities, October 2012					
Rank	Municipality	County	Total	New Construction	Additions
1	South Brunswick Township	Middlesex	751,451	751,450	1
2	Branchburg Township	Somerset	98,768	0	98,768
3	Harrison Town	Hudson	48,497	48,497	0
4	Freehold Township	Monmouth	41,151	0	41,151
5	Woodbridge Township	Middlesex	31,400	31,400	0
6	South Plainfield Borough	Middlesex	30,215	30,215	0
7	Lawnside Borough	Camden	24,615	24,615	0
8	Saddle Brook Township	Bergen	15,226	0	15,226
9	Dunellen Borough	Middlesex	15,000	0	15,000
10	Hanover Township	Morris	12,816	12,816	0
11	Clifton City	Passaic	8,566	0	8,566
12	Franklin Township	Gloucester	7,590	7,590	0
13	Brick Township	Ocean	6,825	6,825	0
14	Rockaway Township	Morris	4,274	0	4,274
15	Bridgeton City	Cumberland	3,295	3,295	0
16	Middletown Township	Monmouth	2,750	2,750	0
17	Toms River Township	Ocean	2,485	2,485	0
18	Hamburg Borough	Sussex	2,466	2,466	0
19	Edison Township	Middlesex	2,100	2,100	0
20	East Windsor Township	Mercer	1,832	1,832	0
<b>TOP MUNICIPALITIES</b>			1,111,322	928,336	182,986
<b>NEW JERSEY</b>			1,115,571	929,347	186,224
<b>TOP AS % OF STATE</b>			99.6%	99.9%	98.3%

**Table 7c** OFFCMUN2 12/7/12

Office Square Feet Authorized by Building Permits: New Jersey Top Municipalities, January-October 2012					
Rank	Municipality	County	Total	New Construction	Additions
1	South Brunswick Township	Middlesex	962,006	864,486	97,520
2	Edison Township	Middlesex	813,439	813,439	0
3	Newark City	Essex	367,679	366,149	1,530
4	Clifton City	Passaic	274,284	233,028	41,256
5	Hanover Township	Morris	271,258	23,593	247,665
6	Carteret Borough	Middlesex	251,354	232,134	19,220
7	Parsippany-Troy Hills Twp	Morris	221,020	219,621	1,399
8	Moorestown Township	Burlington	199,200	199,200	0
9	Edgewater Borough	Bergen	196,116	194,946	1,170
10	Jersey City	Hudson	159,050	159,050	0
11	Lawrence Township	Mercer	154,979	154,979	0
12	Jackson Township	Ocean	149,446	149,446	0
13	Kenilworth Borough	Union	142,169	0	142,169
14	Branchburg Township	Somerset	137,687	38,919	98,768
15	Princeton Borough	Mercer	126,622	126,622	0
16	Linden City	Union	118,659	24,000	94,659
17	Kearny Town	Hudson	114,034	114,034	0
18	Hamilton Township	Mercer	103,360	103,360	0
19	Voorhees Township	Camden	88,736	87,864	872
20	Toms River Township	Ocean	82,385	71,889	10,496
<b>TOP MUNICIPALITIES</b>			4,933,483	4,176,759	756,724
<b>NEW JERSEY</b>			6,718,230	5,410,723	1,307,507
<b>TOP AS % OF STATE</b>			73.4%	77.2%	57.9%

Office Square Feet Authorized by Building Permits  
January-October 2012

You are viewing an Archived Copy from the New Jersey State Library

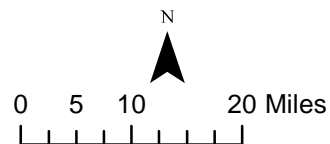
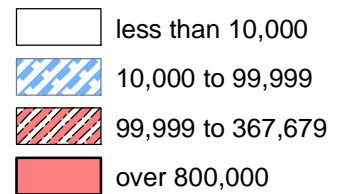


1. South Brunswick  
962,006 sq. ft.  
MIDDLESEX CO.

2. Edison  
813,439 sq. ft.  
MIDDLESEX, CO.

**NJ Municipalities**

**Office Square Feet**



New Jersey  
Department of Community Affairs

MAP2 11/7/12

**Table 8** CERTOFF 12/7/12

Office Square Feet Certified: New Jersey Counties, October 2012						
County	October			Year to Date		
	Total	New Construction	Additions	Total	New Construction	Additions
ATLANTIC	719	0	719	55,992	52,777	3,215
BERGEN	22,551	22,152	399	268,920	165,636	103,284
BURLINGTON	0	0	0	142,824	123,832	18,992
CAMDEN	5,640	4,000	1,640	22,252	18,070	4,182
CAPE MAY	0	0	0	13,257	13,256	1
CUMBERLAND	2,052	0	2,052	37,192	31,193	5,999
ESSEX	17,204	17,204	0	80,173	27,448	52,725
GLOUCESTER	2,600	0	2,600	78,542	25,783	52,759
HUDSON	0	0	0	25,356	25,355	1
HUNTERDON	14,601	14,600	1	97,018	95,116	1,902
MERCER	20,000	20,000	0	48,986	34,704	14,282
MIDDLESEX	9,224	6,000	3,224	387,342	350,262	37,080
MONMOUTH	1,946	0	1,946	101,241	87,478	13,763
MORRIS	6,294	5,331	963	447,373	416,485	30,888
OCEAN	21,831	21,831	0	169,813	105,498	64,315
PASSAIC	28,878	0	28,878	517,554	437,683	79,871
SALEM	0	0	0	21,338	21,338	0
SOMERSET	34,746	33,828	918	77,836	54,337	23,499
SUSSEX	4,055	4,055	0	37,367	26,401	10,966
UNION	15,294	15,294	0	46,277	25,875	20,402
WARREN	1	0	1	6,414	0	6,414
STATE BUILDINGS*	0	0	0	214,629	214,629	0
<b>NEW JERSEY</b>	<b>207,636</b>	<b>164,295</b>	<b>43,341</b>	<b>2,897,696</b>	<b>2,353,156</b>	<b>544,540</b>
NJ 2011 12/7/11	444,758	414,747	30,011	2,395,552	1,878,430	517,122

\*State buildings refer to structures owned or constructed by the State or any of its instrumentalities. See Exhibit A, Summary of Building Permit and Certificate Terms, on page 2.

**Table 9a** RETSPACE 12/7/12

Retail Square Feet Authorized by Building Permits: New Jersey Counties, October 2012						
County	October			Year to Date		
	Total	New Construction	Additions	Total	New Construction	Additions
ATLANTIC	2,200	2,200	0	28,200	2,200	26,000
BERGEN	1,800	1,800	0	60,500	53,505	6,995
BURLINGTON	0	0	0	86,363	14,149	72,214
CAMDEN	0	0	0	65,081	13,535	51,546
CAPE MAY	5,025	5,025	0	14,305	5,025	9,280
CUMBERLAND	2,275	2,275	0	116,735	110,582	6,153
ESSEX	0	0	0	3,030	2,244	786
GLOUCESTER	0	0	0	24,280	24,279	1
HUDSON	0	0	0	437,486	15,241	422,245
HUNTERDON	0	0	0	14,838	14,838	0
MERCER	0	0	0	2,898	2,898	0
MIDDLESEX	8,875	8,875	0	468,377	454,636	13,741
MONMOUTH	20,778	14,820	5,958	156,121	144,934	11,187
MORRIS	0	0	0	14,528	13,443	1,085
OCEAN	25,001	25,001	0	193,616	136,896	56,720
PASSAIC	4,914	0	4,914	36,043	31,129	4,914
SALEM	400	400	0	26,368	24,600	1,768
SOMERSET	0	0	0	0	0	0
SUSSEX	11,665	11,665	0	44,205	41,758	2,447
UNION	0	0	0	35,502	33,198	2,304
WARREN	4,001	4,001	0	25,745	25,745	0
STATE BUILDINGS*	0	0	0	0	0	0
<b>NEW JERSEY</b>	<b>86,934</b>	<b>76,062</b>	<b>10,872</b>	<b>1,854,221</b>	<b>1,164,835</b>	<b>689,386</b>
NJ 2011 12/7/11	113,143	113,143	0	1,409,407	1,289,406	120,001

\*State buildings refer to structures owned or constructed by the State or any of its instrumentalities. See Exhibit A, Summary of Building Permit and Certificate Terms, on page 2.

**Table 9b** RETMUN1 12/7/12

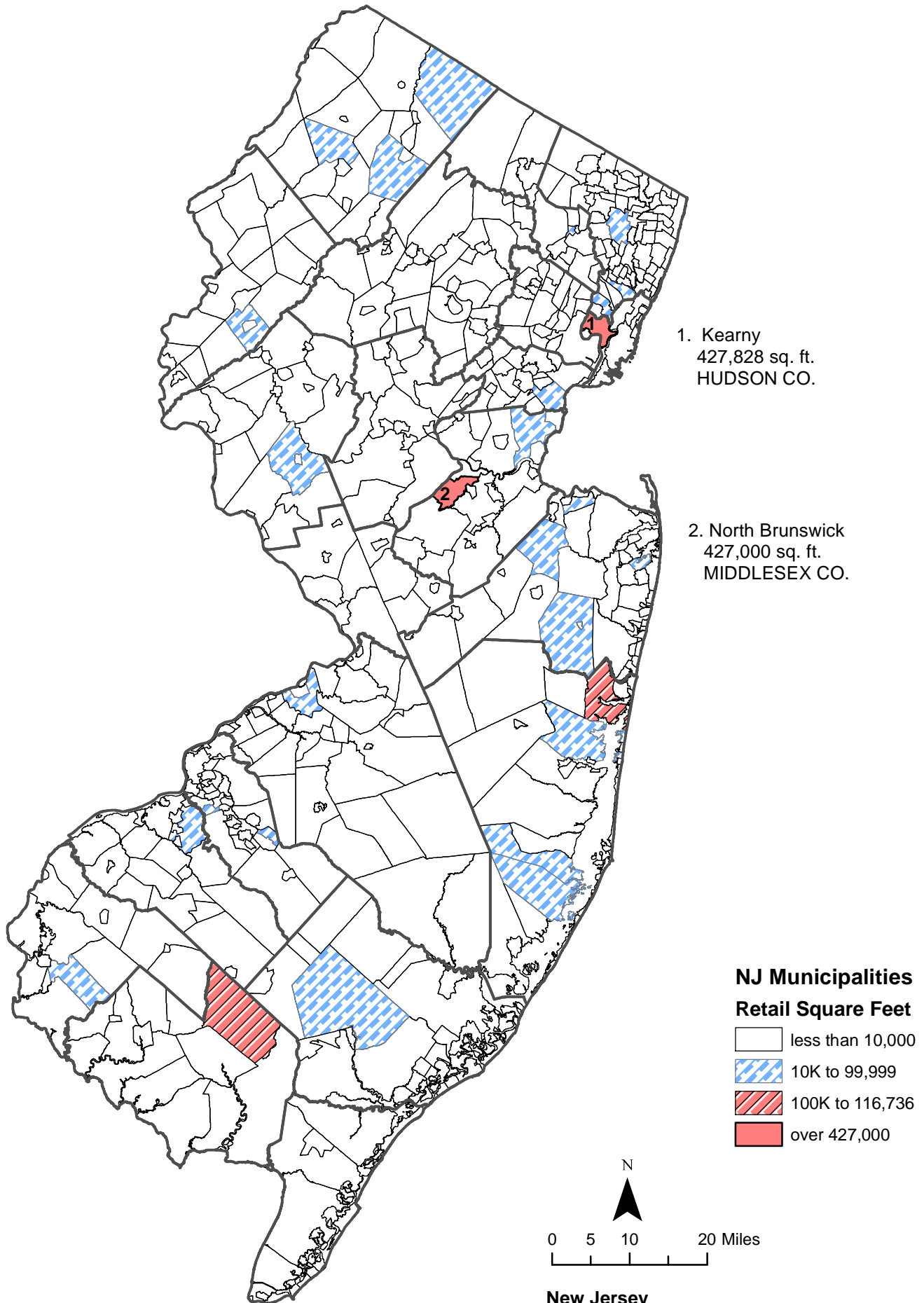
<b>Retail Square Feet Authorized by Building Permits: New Jersey Top Municipalities, October 2012</b>					
<b>Rank</b>	<b>Municipality</b>	<b>County</b>	<b>Total</b>	<b>New Construction</b>	<b>Additions</b>
1	Stafford Township	Ocean	25,000	25,000	0
2	Marlboro Township	Monmouth	14,820	14,820	0
3	Vernon Township	Sussex	11,665	11,665	0
4	Woodbridge Township	Middlesex	8,875	8,875	0
5	Howell Township	Monmouth	5,958	0	5,958
6	North Wildwood City	Cape May	5,025	5,025	0
7	Passaic City	Passaic	4,914	0	4,914
8	Washington Township	Warren	4,001	4,001	0
9	Vineland City	Cumberland	2,275	2,275	0
10	Atlantic City	Atlantic	2,200	2,200	0
11	Englewood City	Bergen	1,800	1,800	0
12	Pennsville Township	Salem	400	400	0
13	Toms River Township	Ocean	1	1	0
14					
15					
16					
17					
18					
19					
20					
	<b>TOP MUNICIPALITIES</b>		86,934	76,062	10,872
	<b>NEW JERSEY</b>		86,934	76,062	10,872
	<b>TOP AS % OF STATE</b>		100.0%	100.0%	100.0%

**Table 9c** RETMUN2 12/7/12

Retail Square Feet Authorized by Building Permits: New Jersey Top Municipalities, January-October 2012					
Rank	Municipality	County	Total	New Construction	Additions
1	Kearny Town	Hudson	427,828	5,583	422,245
2	North Brunswick Township	Middlesex	427,000	427,000	0
3	Vineland City	Cumberland	116,735	110,582	6,153
4	Brick Township	Ocean	103,551	76,831	26,720
5	Oceanport Borough	Monmouth	83,295	83,295	0
6	Burlington Township	Burlington	80,972	12,033	68,939
7	Berlin Township	Camden	50,109	0	50,109
8	Woodbridge Township	Middlesex	38,211	27,636	10,575
9	Howell Township	Monmouth	35,542	27,433	8,109
10	Lyndhurst Township	Bergen	28,890	28,890	0
11	Linden City	Union	27,615	27,615	0
12	Toms River Township	Ocean	26,401	1	26,400
13	Hamilton Township	Atlantic	26,000	0	26,000
14	Stafford Township	Ocean	25,551	25,001	550
15	Barneget Township	Ocean	24,876	24,876	0
16	Deptford Township	Gloucester	24,276	24,276	0
17	Quinton Township	Salem	24,200	24,200	0
18	Washington Township	Warren	22,544	22,544	0
19	Marlboro Township	Monmouth	16,845	14,820	2,025
20	Raritan Township	Hunterdon	14,838	14,838	0
<b>TOP MUNICIPALITIES</b>			1,625,279	977,454	647,825
<b>NEW JERSEY</b>			1,854,221	1,164,835	689,386
<b>TOP AS % OF STATE</b>			87.7%	83.9%	94.0%

# Retail Square Feet Authorized by Building Permits January-October 2012

You Are Viewing an Archived Copy from the New Jersey State Library



**Table 10** CERTRET 12/7/12

Retail Square Feet Certified: New Jersey Counties, October 2012						
County	October			Year to Date		
	Total	New Construction	Additions	Total	New Construction	Additions
ATLANTIC	0	0	0	59,032	59,032	0
BERGEN	31,677	31,677	0	278,082	278,082	0
BURLINGTON	3,275	0	3,275	41,508	38,233	3,275
CAMDEN	11,935	11,935	0	23,935	23,935	0
CAPE MAY	0	0	0	2,604	1,884	720
CUMBERLAND	2,971	0	2,971	2,971	0	2,971
ESSEX	0	0	0	16,540	16,540	0
GLOUCESTER	0	0	0	229,186	224,434	4,752
HUDSON	0	0	0	0	0	0
HUNTERDON	0	0	0	26,838	26,838	0
MERCER	8,604	8,604	0	43,027	43,027	0
MIDDLESEX	5,547	5,547	0	35,552	35,552	0
MONMOUTH	31,375	21,359	10,016	44,968	34,352	10,616
MORRIS	4,674	0	4,674	28,051	19,273	8,778
OCEAN	19,655	9,605	10,050	80,931	70,824	10,107
PASSAIC	0	0	0	1,498	1,050	448
SALEM	0	0	0	1,768	0	1,768
SOMERSET	0	0	0	17,125	17,125	0
SUSSEX	0	0	0	14,208	8,384	5,824
UNION	0	0	0	11,330	3,086	8,244
WARREN	4,375	4,375	0	9,964	9,964	0
STATE BUILDINGS*	0	0	0	0	0	0
<b>NEW JERSEY</b>	<b>124,088</b>	<b>93,102</b>	<b>30,986</b>	<b>969,118</b>	<b>911,615</b>	<b>57,503</b>
NJ 2011 12/7/11	285,111	282,136	2,975	1,462,793	1,355,164	107,629

\*State buildings refer to structures owned or constructed by the State or any of its instrumentalities. See Exhibit A, Summary of Building Permit and Certificate Terms, on page 2.

**Table 11a** WORK 12/7/12

Dollar Amount of Construction Authorized by Building Permits: New Jersey Counties, October 2012						
County	October			Year to Date		
	Total	Residential	Nonresidential	Total	Residential	Nonresidential
ATLANTIC	\$23,324,579	\$11,310,480	\$12,014,099	\$258,138,051	\$108,653,967	\$149,484,084
BERGEN	81,619,657	52,880,297	28,739,360	1,157,371,996	696,479,136	460,892,860
BURLINGTON	24,846,041	14,763,975	10,082,066	397,135,055	154,397,730	242,737,325
CAMDEN	26,202,694	12,382,683	13,820,011	316,366,268	136,266,281	180,099,987
CAPE MAY	25,521,051	23,343,038	2,178,013	202,184,258	160,518,589	41,665,669
CUMBERLAND	7,022,663	2,584,751	4,437,912	85,472,685	23,656,955	61,815,730
ESSEX	36,317,729	21,163,682	15,154,047	709,646,704	357,264,583	352,382,121
GLOUCESTER	24,875,592	12,517,842	12,357,750	258,182,667	98,455,417	159,727,250
HUDSON	143,776,800	126,698,155	17,078,645	786,901,461	528,639,914	258,261,547
HUNTERDON	8,941,272	5,357,820	3,583,452	115,254,171	60,363,473	54,890,698
MERCER	78,247,435	30,508,687	47,738,748	551,650,863	172,300,211	379,350,652
MIDDLESEX	94,418,524	36,603,179	57,815,345	842,947,048	285,943,168	557,003,880
MONMOUTH	75,922,752	61,644,383	14,278,369	654,773,318	425,501,052	229,272,266
MORRIS	59,007,477	27,196,671	31,810,806	691,120,919	274,654,748	416,466,171
OCEAN	61,270,896	45,132,579	16,138,317	594,886,810	382,843,015	212,043,795
PASSAIC	15,614,728	9,802,800	5,811,928	247,245,208	119,365,673	127,879,535
SALEM	2,681,859	1,544,493	1,137,366	38,889,198	12,859,447	26,029,751
SOMERSET	54,555,377	20,003,630	34,551,747	481,606,276	235,171,218	246,435,058
SUSSEX	9,683,139	5,479,010	4,204,129	95,643,882	52,540,345	43,103,537
UNION	42,825,613	18,457,825	24,367,788	557,233,267	226,823,412	330,409,855
WARREN	4,380,000	2,382,352	1,997,648	64,438,161	25,647,701	38,790,460
STATE BUILDINGS*	30,466,037	0	30,466,037	290,565,503	9,725,431	280,840,072
<b>NEW JERSEY</b>	<b>\$931,521,915</b>	<b>\$541,758,332</b>	<b>\$389,763,583</b>	<b>\$9,397,653,769</b>	<b>\$4,548,071,466</b>	<b>\$4,849,582,303</b>
NJ 2011 12/7/11	\$913,482,471	\$423,517,312	\$489,965,159	\$9,205,544,490	\$3,920,549,418	\$5,284,995,072

\*State buildings refer to structures owned or constructed by the State or any of its instrumentalities. See Exhibit A, Summary of Building Permit and Certificate Terms, on page 2.

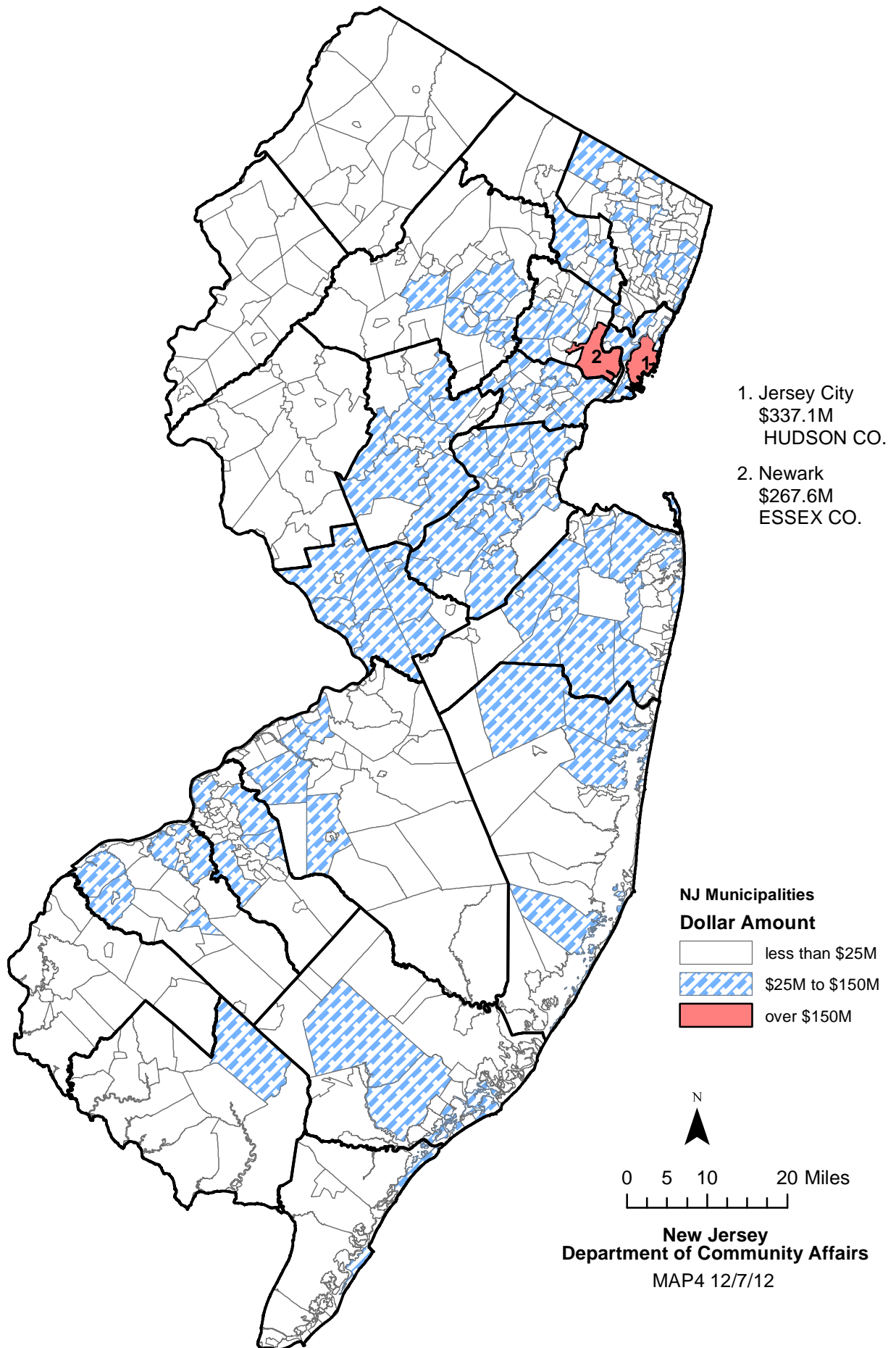
**Table 11c** WORK1 12/7/12

<b>Dollar Amount Construction Authorized by Building Permits: Top Municipalities, October 2012</b>					
<b>Rank</b>	<b>Municipality</b>	<b>County</b>	<b>Total</b>	<b>Residential</b>	<b>Nonresidential</b>
1	Jersey City	Hudson	\$127,906,822	\$118,483,743	\$9,423,079
2	South Brunswick	Middlesex	26,512,485	6,533,272	19,979,213
3	Howell Township	Monmouth	22,541,858	22,175,354	366,504
4	Branchburg Township	Somerset	19,711,452	657,347	19,054,105
5	Ewing Township	Mercer	18,810,914	5,387,781	13,423,133
6	West Windsor	Mercer	15,452,196	2,094,510	13,357,686
7	Princeton Township	Mercer	14,727,658	6,476,844	8,250,814
8	Parsippany-Troy Hills	Morris	14,363,795	1,465,639	12,898,156
9	Toms River Township	Ocean	12,929,138	4,586,357	8,342,781
10	Elizabeth City	Union	12,725,792	472,560	12,253,232
11	Edison Township	Middlesex	12,286,576	3,992,416	8,294,160
12	Woodbridge Township	Middlesex	10,858,656	2,410,580	8,448,076
13	Franklin Township	Somerset	9,903,804	5,682,724	4,221,080
14	Piscataway Township	Middlesex	9,158,748	3,495,985	5,662,763
15	Newark City	Essex	8,761,183	3,265,544	5,495,639
16	Hopewell Township	Mercer	8,592,817	6,587,671	2,005,146
17	Upper Saddle River	Bergen	8,021,387	7,787,087	234,300
18	Long Beach Township	Ocean	7,582,596	7,380,745	201,851
19	Stone Harbor Borough	Cape May	6,984,719	6,975,918	8,801
20	Atlantic City	Atlantic	6,975,295	877,979	6,097,316
	<b>TOP MUNICIPALITIES</b>		367,832,596	216,790,056	158,017,835
	<b>NEW JERSEY</b>		\$931,521,915	\$541,758,332	\$389,763,583
	<b>TOP AS % OF STATE</b>		39.5%	40.0%	40.5%

**Table 11c** WORK2 12/7/12

<b>Dollar Amount Construction Authorized by Building Permits: Top Municipalities, January-October 2012</b>					
<b>Rank</b>	<b>Municipality</b>	<b>County</b>	<b>Total</b>	<b>Residential</b>	<b>Nonresidential</b>
1	Jersey City	Hudson	\$337,085,913	\$230,713,241	\$106,372,672
2	Newark City	Essex	267,641,041	108,103,730	159,537,311
3	Hanover Township	Morris	142,470,027	17,800,192	124,669,835
4	Edison Township	Middlesex	133,361,555	30,079,939	103,281,616
5	Franklin Township	Somerset	115,073,831	67,183,104	47,890,727
6	Brick Township	Ocean	112,607,796	44,896,346	67,711,450
7	Parsippany-Troy Hills	Morris	104,160,357	14,965,956	89,194,401
8	Cliffside Park Borough	Bergen	101,555,625	100,897,168	658,457
9	Fort Lee Borough	Bergen	99,874,716	87,972,575	11,902,141
10	Woodbridge Township	Middlesex	97,181,951	28,834,181	68,347,770
11	Lawrence Township	Mercer	96,971,680	9,157,984	87,813,696
12	Elizabeth City	Union	93,605,491	12,786,097	80,819,394
13	Weehawken Township	Hudson	89,974,534	80,131,942	9,842,592
14	Plainsboro Township	Middlesex	87,626,010	6,462,662	81,163,348
15	Cherry Hill Township	Camden	86,870,042	46,751,596	40,118,446
16	Atlantic City	Atlantic	85,964,716	5,528,005	80,436,711
17	Toms River Township	Ocean	84,518,740	38,634,795	45,883,945
18	Lakewood Township	Ocean	83,765,514	55,249,767	28,515,747
19	Bridgewater Township	Somerset	82,416,858	20,137,963	62,278,895
20	Hoboken City	Hudson	80,661,002	58,367,225	22,293,777
<b>TOP MUNICIPALITIES</b>			2,383,387,399	1,064,654,468	1,318,732,931
<b>NEW JERSEY</b>			\$9,397,653,769	\$4,548,071,466	\$4,849,582,303
<b>TOP AS % OF STATE</b>			25.4%	23.4%	27.2%

Estimated Dollar Amount of Construction  
Authorized by Building Permits, January-October 2012



**Table 12** USEGROUP 12/7/12

Dollar Amount of Construction Authorized by Building Permits by Use Group: New Jersey, October 2012						
Use Group	October			Year to Date		
	Permits	Construction Costs	Square Feet	Permits	Construction Costs	Square Feet
RESIDENTIAL	27,673	\$541,758,332	3,705,245	272,356	\$4,548,071,466	34,881,930
1 & 2 Family	25,558	354,312,892	2,210,754	253,967	3,313,871,305	22,584,035
Multifamily	2,115	187,445,440	1,494,491	18,389	1,234,200,161	12,297,895
NONRESIDENTIAL	5,968	\$389,763,583	2,464,925	65,428	4,849,582,303	18,888,882
Hotels, Motels, Guest Houses	57	4,260,004	2,112	787	80,848,732	189,015
Assembly	433	36,056,139	103,358	5,116	500,362,114	1,493,684
Business	2,209	153,792,497	1,115,571	23,807	2,093,165,394	6,718,230
Educational	171	18,141,217	2,530	2,483	473,234,640	584,214
Hazardous Use	11	354,892	0	59	3,796,332	1
Industrial	69	8,736,128	15,104	672	117,128,725	360,685
Institutional	75	22,167,334	55,521	816	235,932,982	1,128,734
Retail	424	22,330,260	86,934	4,504	406,472,567	1,854,221
Storage	186	32,997,194	596,202	1,768	296,004,734	3,955,932
Signs, Fences, Miscellaneous	2,333	90,927,918	487,593	25,416	642,636,083	2,604,166
<b>NEW JERSEY</b>	<b>33,641</b>	<b>\$931,521,915</b>	<b>6,170,170</b>	<b>337,784</b>	<b>\$9,397,653,769</b>	<b>53,770,812</b>
NJ 2011 12/7/11	36,522	\$913,482,471	4,045,793	323,422	\$9,205,544,490	42,465,387

**Table 13** PARTIC 12/7/12

Dollar Amount of Construction Authorized by Building Permits: New Jersey, October 2012					
Month	Number of Municipalities Reporting	Total	New Construction	Additions	Alterations
JANUARY	566	\$801,292,944	\$279,446,557	\$55,891,076	\$465,955,311
FEBRUARY	565	715,009,132	237,784,629	69,901,604	407,322,899
MARCH	565	965,469,900	332,977,256	101,527,763	530,964,881
APRIL	566	941,902,151	261,547,385	130,873,212	549,481,554
MAY	564	919,101,409	217,937,417	112,091,568	589,072,424
JUNE	564	1,157,453,299	381,771,252	122,538,241	653,143,806
JULY	565	1,109,968,279	396,375,695	97,855,864	615,736,720
AUGUST	564	871,751,720	241,147,140	75,215,164	555,389,416
SEPTEMBER	558	984,183,020	415,707,459	65,215,012	503,260,549
OCTOBER	541	931,521,915	365,093,345	96,159,085	470,269,485
NOVEMBER					
DECEMBER					
<b>TOTAL</b>		<b>\$9,397,653,769</b>	<b>\$3,129,788,135</b>	<b>\$927,268,589</b>	<b>\$5,340,597,045</b>
YEAR-TO-DATE TOTAL 2011 12/7/11		\$9,205,544,490	\$3,295,930,618	\$820,485,608	\$5,089,128,264

NOTE:

Users of the monthly *CONSTRUCTION REPORTER* may notice that year-to-date figures in a particular issue may not be obtained by merely summing the monthly totals that appear in previous issues. This is because the construction data compiled by the New Jersey Department of Community Affairs are continuously updated. Monthly construction reports submitted too late to make the January issue of the *CONSTRUCTION REPORTER*, for example, are included in the year-to-date totals that appear in the February issue.

### MUNICIPAL SUMMARY DATA, October 2012

AREA NAME	AUTHORIZED HOUSING UNITS	AUTHORIZED HOUSING UNITS (CENSUS DEFINITIONS)	HOUSING UNITS CERTIFIED	OFFICE SPACE AUTHORIZED BY BUILDING PERMITS	RETAIL SPACE AUTHORIZED BY BUILDING PERMITS	RESIDENTIAL (\$ AMOUNT)	NONRESIDENTIAL (\$ AMOUNT)
	UNITS						
<b>Atlantic County</b>	43	47	135	0	2,200	\$11,310,480	\$12,014,099
<b>Bergen County</b>	45	148	35	15,427	1,800	52,880,297	28,739,360
<b>Burlington County</b>	23	65	35	0	0	14,763,975	10,082,066
<b>Camden County</b>	18	56	109	24,615	0	12,382,683	13,820,011
<b>Cape May County</b>	58	53	25	0	5,025	23,343,038	2,178,013
<b>Cumberland County</b>	11	15	5	3,295	2,275	2,584,751	4,437,912
<b>Essex County</b>	183	147	44	1,116	0	21,163,682	15,154,047
<b>Gloucester County</b>	63	61	27	7,590	0	12,517,842	12,357,750
<b>Hudson County</b>	53	155	28	48,497	0	126,698,155	17,078,645
<b>Hunterdon County</b>	7	16	1	358	0	5,357,820	3,583,452
<b>Mercer County</b>	178	187	67	2,382	0	30,508,687	47,738,748
<b>Middlesex County</b>	156	200	117	830,166	8,875	36,603,179	57,815,345
<b>Monmouth County</b>	149	87	65	44,582	20,778	61,644,383	14,278,369
<b>Morris County</b>	40	76	26	17,973	0	27,196,671	31,810,806
<b>Ocean County</b>	185	156	97	9,310	25,001	45,132,579	16,138,317
<b>Passaic County</b>	13	33	79	8,566	4,914	9,802,800	5,811,928
<b>Salem County</b>	5	4	3	460	400	1,544,493	1,137,366
<b>Somerset County</b>	46	54	42	98,768	0	20,003,630	34,551,747
<b>Sussex County</b>	8	17	10	2,466	11,665	5,479,010	4,204,129
<b>Union County</b>	12	49	15	0	0	18,457,825	24,367,788
<b>Warren County</b>	2	17	9	0	4,001	2,382,352	1,997,648
<b>State Buildings</b>	0		0	0	0	0	30,466,037
<b>New Jersey</b>	<b>1,298</b>	<b>1,643</b>	<b>974</b>	<b>1,115,571</b>	<b>86,934</b>	<b>\$541,758,332</b>	<b>\$389,763,583</b>
<b>NEW JERSEY 2011</b>	<b>11,882</b>		<b>10,352</b>	<b>4,915,544</b>	<b>1,680,445</b>	<b>\$4,832,350,928</b>	<b>\$6,107,458,821</b>
<b>NEW JERSEY 2010</b>	<b>11,885</b>	<b>13,535</b>	<b>11,625</b>	<b>5,496,579</b>	<b>2,192,231</b>	<b>4,879,205,601</b>	<b>4,889,436,742</b>
<b>NEW JERSEY 2009</b>	<b>11,145</b>	<b>10,827</b>	<b>14,460</b>	<b>4,253,888</b>	<b>2,248,935</b>	<b>4,506,768,272</b>	<b>5,010,957,124</b>
<b>NEW JERSEY 2008</b>	<b>16,388</b>	<b>18,369</b>	<b>18,699</b>	<b>7,962,998</b>	<b>5,557,101</b>	<b>5,915,342,801</b>	<b>8,029,191,777</b>
<b>NEW JERSEY 2007</b>	<b>25,948</b>	<b>25,389</b>	<b>23,138</b>	<b>9,569,501</b>	<b>5,423,889</b>	<b>8,047,734,107</b>	<b>7,308,838,713</b>
<b>NEW JERSEY 2006</b>	<b>32,050</b>	<b>34,323</b>	<b>28,564</b>	<b>11,113,555</b>	<b>5,186,662</b>	<b>8,320,885,749</b>	<b>7,354,222,206</b>
<b>NEW JERSEY 2005</b>	<b>39,688</b>	<b>38,375</b>	<b>31,047</b>	<b>11,038,132</b>	<b>5,965,258</b>	<b>9,127,194,950</b>	<b>6,270,312,197</b>
<b>NEW JERSEY 2004</b>	<b>39,254</b>	<b>35,936</b>	<b>27,950</b>	<b>12,219,068</b>	<b>4,961,257</b>	<b>7,972,659,530</b>	<b>6,301,672,320</b>
<b>NEW JERSEY 2003</b>	<b>35,171</b>	<b>32,984</b>	<b>26,932</b>	<b>9,744,146</b>	<b>6,038,428</b>	<b>6,674,318,674</b>	<b>5,474,429,133</b>
<b>NEW JERSEY 2002</b>	<b>34,589</b>	<b>30,411</b>	<b>29,174</b>	<b>9,261,054</b>	<b>7,560,913</b>	<b>6,210,486,721</b>	<b>5,869,455,378</b>
<b>NEW JERSEY 2001</b>	<b>35,680</b>	<b>28,267</b>	<b>30,054</b>	<b>19,134,533</b>	<b>7,244,833</b>	<b>5,756,546,492</b>	<b>6,250,910,138</b>
<b>NEW JERSEY 2000</b>	<b>38,065</b>	<b>34,585</b>	<b>29,705</b>	<b>15,531,039</b>	<b>6,063,412</b>	<b>5,575,603,576</b>	<b>5,812,079,758</b>
<b>NEW JERSEY 1999</b>	<b>37,536</b>	<b>31,976</b>	<b>28,109</b>	<b>13,237,891</b>	<b>6,226,471</b>	<b>5,377,163,097</b>	<b>5,207,004,433</b>
<b>NEW JERSEY 1998</b>	<b>35,676</b>	<b>31,345</b>	<b>28,008</b>	<b>12,703,824</b>	<b>7,921,892</b>	<b>4,812,845,052</b>	<b>4,583,910,465</b>
<b>NEW JERSEY 1997</b>	<b>30,017</b>	<b>28,018</b>	<b>34,670</b>	<b>10,490,171</b>	<b>5,688,955</b>	<b>4,083,041,927</b>	<b>4,263,491,187</b>
<b>Atlantic County</b>							
Absecon City	0	0	0	0	0	230,903	17,050
Atlantic City	9	5	110	0	2,200	877,979	6,097,316
Brigantine City	0	0	0	0	0	489,272	83,700
Buena Borough	0	1 *	0	0	0	0	115
Buena Vista Township	0	0	0	0	0	181,220	181,301
Corbin City	No report	0 *	0	No report	No report	No report	No report
Egg Harbor City	1	1	0	0	0	203,329	35,739
Egg Harbor Township	6	6	9	0	0	1,552,135	365,150
Estell Manor City	0	0	0	0	0	51,600	10,000
Folsom Borough	2	1	0	0	0	236,582	11,000
Galloway Township	5	5	4	0	0	956,511	324,609
Hamilton Township	3	6 *	6	0	0	615,062	3,058,242
Hammonton Township	0	0	0	0	0	289,898	267,926
Linwood City	0	1 *	1	0	0	214,996	165,246

**MUNICIPAL SUMMARY DATA, October 2012**

AREA NAME	AUTHORIZED HOUSING UNITS	AUTHORIZED HOUSING UNITS (CENSUS DEFINITIONS)	HOUSING UNITS CERTIFIED	OFFICE SPACE AUTHORIZED BY BUILDING PERMITS	RETAIL SPACE AUTHORIZED BY BUILDING PERMITS	RESI-DENTIAL (\$ AMOUNT)	NONRESI-DENTIAL (\$ AMOUNT)
	UNITS						
Longport City	No report	1	0	No report	No report	No report	No report
Margate City	15	15	3	0	0	4,729,514	70,654
Mullica City	0	2 *	0	0	0	41,889	24,250
Northfield City	1	1	0	0	0	382,445	587,450
Pleasantville City	1	1	2	0	0	126,583	513,897
Port Republic City	0	0	0	0	0	4,600	0
Somers Point City	0	1 *	0	0	0	118,462	117,079
Ventnor City	No report	0 *	0	No report	No report	No report	No report
Weymouth Township	0	0 *	0	0	0	7,500	83,375
<b>Bergen County</b>							
Allendale Borough	0	0	1	0	0	689,797	78,102
Alpine Borough	1	1	0	0	0	2,033,550	242,313
Bergenfield Borough	0	0	0	0	0	939,150	584,330
Bogota Borough	0	1 *	0	0	0	103,531	209,900
Carlstadt Borough	0	2 *	0	0	0	97,283	399,185
Cliffside Park Borough	1	2	0	0	0	805,284	20,900
Closter Borough	0	0	0	0	0	184,578	456,700
Cresskill Borough	2	0 *	1	0	0	1,089,120	29,800
Demarest Borough	0	2 *	1	0	0	756,993	3,700
Dumont Borough	No report	0 *	0	No report	No report	No report	No report
Elmwood Park Borough	2	11 *	0	0	0	458,416	1,376,995
East Rutherford Borough	0	0 *	0	0	0	53,435	424,605
Edgewater Borough	0	0	0	0	0	1,955,210	207,149
Emerson Borough	0	6 *	3	0	0	157,902	431,500
Englewood City	0	6 *	0	0	1,800	815,882	707,372
Englewood Cliffs Borough	1	1	0	0	0	954,954	42,830
Fair Lawn Borough	0	1 *	0	0	0	899,404	194,878
Fairview Borough	0	11 *	1	0	0	241,957	131,100
Fort Lee Borough	3	3	0	0	0	2,776,804	907,247
Franklin Lakes Borough	1	1	1	0	0	822,245	1,213,033
Garfield City	0	5 *	0	0	0	383,668	787,058
Glen Rock Borough	0	3 *	0	0	0	96,920	0
Hackensack City	0	0	1	0	0	597,585	3,489,115
Harrington Park Borough	0	1 *	1	0	0	291,388	1,600
Hasbrouck Heights Borough	1	0 *	1	0	0	868,588	126,400
Haworth Borough	0	0	0	0	0	183,713	0
Hillsdale Borough	0	0 *	0	0	0	554,939	51,800
Ho-Ho-Kus Borough	0	1 *	0	0	0	107,599	21,513
Leonia Borough	0	0 *	0	0	0	165,783	181,170
Little Ferry Borough	0	0	0	0	0	295,711	96,310
Lodi Borough	0	0	0	0	0	93,871	216,760
Lyndhurst Township	0	21 *	0	0	0	462,073	590,202
Mahwah Township	2	5	0	0	0	1,401,164	1,040,755
Maywood Borough	0	0	0	0	0	331,070	69,600
Midland Park Borough	0	0	0	0	0	175,318	53,984
Montvale Borough	1	2	7	0	0	941,505	1,165,522
Moonachie Borough	0	0	0	0	0	6,950	7,000
New Milford Borough	0	1 *	0	0	0	271,287	8,500
North Arlington Borough	0	0	0	0	0	235,711	601,180
Northvale Borough	0	7 *	0	0	0	103,323	214,645
Norwood Borough	0	1 *	0	0	0	158,560	0
Oakland Borough	0	0	0	0	0	360,771	3,236,600
Old Tappan Borough	0	2 *	0	0	0	336,492	37,995
Oradell Borough	0	1 *	0	0	0	544,074	26,000
Palisades Park Borough	10	10	9	0	0	2,024,623	227,100

**MUNICIPAL SUMMARY DATA, October 2012**

AREA NAME	AUTHORIZED	AUTHORIZED	HOUSING	OFFICE SPACE	RETAIL SPACE	RESI-	NONRESI-
	HOUSING	HOUSING UNITS	UNITS	AUTHORIZED	AUTHORIZED	DENTIAL	DENTIAL
	UNITS	(CENSUS	CERTIFIED	BY BUILDING	BY BUILDING	(\$ AMOUNT)	(\$ AMOUNT)
		DEFINITIONS)		PERMITS	PERMITS		
Paramus Borough	2	2	0	0	0	1,640,604	1,976,499
Park Ridge Borough	0	6 *	0	0	0	502,457	68,294
Ramsey Borough	0	2 *	2	0	0	948,686	401,410
Ridgefield Borough	0	3 *	0	0	0	115,697	729,300
Ridgefield Park Village	0	1 *	0	0	0	217,945	584,760
Ridgewood Village	0	1 *	1	0	0	1,529,794	327,532
River Edge Borough	0	1 *	0	0	0	284,247	90,053
River Vale Township	1	1	0	0	0	867,584	71,375
Rochelle Park Township	0	0	0	0	0	81,324	19,065
Rockleigh Borough	0	0	0	0	0	14,650	22,250
Rutherford Borough	0	0 *	0	0	0	353,372	1,047,600
Saddle Brook Township	2	7 *	0	15,226	0	802,019	1,314,122
Saddle River Borough	0	0 *	0	0	0	1,764,715	8,600
South Hackensack Twp	0	0	0	0	0	925	95,300
Teaneck Township	4	4	1	0	0	2,738,600	242,448
Tenafly Borough	2	0	1	0	0	2,019,780	126,690
Teterboro Borough	0	0	0	0	0	0	523,690
Upper Saddle River Borough	4	0 *	1	0	0	7,787,087	234,300
Waldwick Borough	0	4 *	1	0	0	353,985	118,905
Wallington Borough	4	3 *	0	0	0	280,530	45,000
Washington Township	0	2 *	0	0	0	646,571	9,200
Westwood Borough	1	1	0	0	0	490,265	184,913
Woodcliff Lake Borough	0	1 *	1	0	0	965,092	103,380
Wood-Ridge Borough	0	0 *	0	0	0	269,186	95,540
Wyckoff Township	0	1 *	0	201	0	1,377,001	386,686
<b>Burlington County</b>							
Bass River Township	0	0 *	0	0	0	115,401	6,600
Beverly City	0	0 *	0	0	0	23,675	200
Bordentown City	0	0	0	0	0	49,700	10,000
Bordentown Township	0	0 *	2	0	0	560,869	82,600
Burlington City	0	0	1	0	0	111,550	2,624,980
Burlington Township	0	2 *	15	0	0	577,106	1,573,278
Chesterfield Township	3	3	6	0	0	872,339	66,845
Cinnaminson Township	0	22 *	1	0	0	299,357	333,491
Delanco Township	0	0 *	0	0	0	36,450	1,475
Delran Township	8	8	0	0	0	1,276,586	341,441
Eastampton Township	0	0	0	0	0	118,706	1,700
Edgewater Park Township	0	0 *	0	0	0	346,405	1,700
Evesham Township	No report	7 *	0	No report	No report	No report	No report
Fieldsboro Borough	0	0	0	0	0	11,675	0
Florence Township	1	3 *	0	0	0	448,650	455,954
Hainesport Township	0	0	0	0	0	175,605	366,675
Lumberton Township	0	0	0	0	0	271,019	116,786
Mansfield Township	1	3 *	0	0	0	482,958	310,706
Maple Shade Borough	0	6 *	0	0	0	242,421	394,650
Medford Township	3	3	6	0	0	1,930,232	170,165
Medford Lakes Borough	0	1 *	0	0	0	109,475	1,000
Moorestown Township	0	0	0	0	0	890,321	1,145,142
Mount Holly Township	0	0	0	0	0	210,803	25,850
Mount Laurel Township	3	0	2	0	0	2,097,597	1,037,286
New Hanover Township	0	0	0	0	0	9,200	1,000
North Hanover Township	1	1	1	0	0	291,441	15,000
Palmyra Borough	0	1 *	0	0	0	81,303	16,475
Pemberton Borough	0	0	0	0	0	7,600	0
Pemberton Township	0	0	0	0	0	341,893	70,743

**MUNICIPAL SUMMARY DATA, October 2012**

AREA NAME	AUTHORIZED	AUTHORIZED	HOUSING UNITS CERTIFIED	OFFICE SPACE	RETAIL SPACE	RESI-DENTIAL (\$ AMOUNT)	NONRESI-DENTIAL (\$ AMOUNT)
	HOUSING UNITS	HOUSING UNITS (CENSUS DEFINITIONS)		AUTHORIZED BY BUILDING PERMITS	AUTHORIZED BY BUILDING PERMITS		
Riverside Township	0	0 *	0	0	0	94,169	35,350
Riverton Borough	0	1 *	0	0	0	54,850	0
Shamong Township	1	1 *	0	0	0	276,297	39,500
Southampton Township	0	1 *	0	0	0	613,939	94,040
Springfield Township	1	0 *	0	0	0	270,601	129,790
Tabernacle Township	0	0 *	0	0	0	252,674	105,234
Washington Township	1	1	1	0	0	123,714	3,333
Westampton Township	0	0 *	0	0	0	417,242	30,500
Willingboro Township	0	0	0	0	0	670,152	462,577
Woodland Township	0	1 *	0	0	0	0	10,000
Wrightstown Borough	No report	0 *	0	No report	No report	No report	No report
<b>Camden County</b>							
Audubon Borough	0	0	0	0	0	110,580	11,085
Audubon Park Borough	No report	0 *	0	No report	No report	No report	No report
Barrington Borough	0	7	1	0	0	154,555	13,300
Bellmawr Borough	0	0	0	0	0	289,937	293,765
Berlin Borough	1	1	0	0	0	183,390	104,044
Berlin Township	3	3	1	0	0	335,716	23,034
Brooklawn Borough	0	0	0	0	0	79,584	0
Camden City	0	1	51	0	0	1,321,906	1,789,750
Cherry Hill Township	2	2	22	0	0	2,312,727	1,963,180
Chesilhurst Borough	2	0	0	0	0	18,039	0
Clementon Borough	0	1 *	0	0	0	22,428	1,000
Collingswood Borough	0	0 *	0	0	0	520,347	158,825
Gibbsboro Borough	0	0 *	0	0	0	28,717	0
Gloucester City	No report	0 *	0	No report	No report	No report	No report
Gloucester Township	0	0	1	0	0	790,890	5,594,137
Haddon Township	1	1	0	0	0	737,892	97,911
Haddonfield Borough	2	1	1	0	0	1,304,142	80,300
Haddon Heights Borough	0	2 *	2	0	0	171,417	73,930
Hi-nella Borough	0	0 *	0	0	0	20,500	0
Laurel Springs Borough	0	0 *	0	0	0	31,475	5,100
Lawnside Borough	0	0	0	24,615	0	26,300	1,219,775
Lindenwold Borough	0	11 *	2	0	0	94,759	253,349
Magnolia Borough	0	0 *	0	0	0	68,899	1,154
Merchantville Borough	No report	0 *	0	No report	No report	No report	No report
Mount Ephraim Borough	0	0	0	0	0	101,864	13,187
Oaklyn Borough	0	0 *	0	0	0	11,400	0
Pennsauken Township	0	1 *	0	0	0	495,293	1,307,004
Pine Hill Borough	2	17 *	24	0	0	466,952	7,550
Pine Valley Borough	No report	0 *	0	No report	No report	No report	No report
Runnemede Borough	0	0	0	0	0	139,253	64,964
Somerdale Borough	0	0	0	0	0	185,851	6,000
Stratford Borough	0	0	0	0	0	196,092	0
Tavistock Borough	0	0 0	0	0	0	0	0
Voorhees Township	1	1	0	0	0	747,972	496,867
Waterford Township	4	4	4	0	0	1,022,506	62,425
Winslow Township	0	3 *	0	0	0	389,000	178,375
Woodlynne Borough	0	0	0	0	0	2,300	0
<b>Cape May County</b>							
Avalon Borough	9	9	2	0	0	4,301,533	206,740
Cape May City	2	2	0	0	0	1,584,664	64,260
Cape May Point Borough	1	1	0	0	0	407,200	0
Dennis Township	0	1 *	0	0	0	126,350	139,100
Lower Township	2	2 *	1	0	0	844,068	202,121

**MUNICIPAL SUMMARY DATA, October 2012**

AREA NAME	AUTHORIZED	AUTHORIZED	HOUSING	OFFICE SPACE	RETAIL SPACE	RESI-	NONRESI-
	HOUSING	HOUSING UNITS	UNITS	AUTHORIZED	AUTHORIZED	DENTIAL	DENTIAL
	UNITS	(CENSUS	CERTIFIED	BY BUILDING	BY BUILDING	(\$ AMOUNT)	(\$ AMOUNT)
		DEFINITIONS)		PERMITS	PERMITS		
Middle Township	1	0	5	0	0	489,847	158,301
North Wildwood City	1	1	1	0	5,025	917,871	844,351
Ocean City	14	12	11	0	0	3,094,592	284,796
Sea Isle City	14	14	2	0	0	3,136,357	12,400
Stone Harbor Borough	9	9	1	0	0	6,975,918	8,801
Upper Township	1	1 *	0	0	0	365,149	4,124
West Cape May Borough	1	1 *	0	0	0	673,381	9,200
West Wildwood Borough	1	0 *	0	0	0	57,415	0
Wildwood City	1	0 *	1	0	0	356,222	75,019
Wildwood Crest Borough	0	0	0	0	0	2,300	0
Woodbine Borough	1	0	1	0	0	10,171	168,800
<b>Cumberland County</b>							
Bridgeton City	0	2 *	0	3,295	0	253,417	370,451
Commercial Township	1	1	0	0	0	105,140	2,000
Deerfield Township	1	0 *	0	0	0	133,700	450,600
Downe Township	1	1	0	0	0	41,301	23,501
Fairfield Township	0	0	0	0	0	31,150	85,176
Greenwich Township	0	0 *	0	0	0	15,100	13,840
Hopewell Township	0	1 *	0	0	0	62,259	27,571
Lawrence Township	0	0	0	0	0	71,746	0
Maurice River Township	1	1 *	0	0	0	158,224	21,750
Millville City	1	4 *	1	0	0	298,227	43,915
Shiloh Borough	0	0 *	0	0	0	324	4,400
Stow Creek Township	0	0	0	0	0	10,000	1,500
Upper Deerfield Township	0	2 *	0	0	0	138,550	30,185
Vineland City	6	3	4	0	2,275	1,265,613	3,363,023
<b>Essex County</b>							
Belleville Town	0	0	0	0	0	689,148	285,250
Bloomfield Township	0	0 *	0	0	0	1,378,634	13,050
Caldwell Township	0	0 *	0	0	0	191,242	9,550
Cedar Grove Township	0	2 *	0	0	0	768,889	185,250
East Orange City	74	0 *	0	0	0	1,681,820	1,931,516
Essex Fells Township	0	1 *	0	0	0	281,625	19,700
Fairfield Township	0	0	0	0	0	533,270	404,850
Glen Ridge Borough	1	1	0	0	0	501,191	0
Irvington Township	1	0 *	0	0	0	620,585	206,378
Livingston Township	0	3 *	0	0	0	2,087,233	1,060,635
Maplewood Township	64	63	0	0	0	1,681,932	143,750
Millburn Township	No report	4 *	0	No report	No report	No report	No report
Montclair Township	0	0	2	0	0	1,690,725	816,228
Newark City	40	40	13	1,116	0	3,265,544	5,495,639
North Caldwell Borough	0	3 *	4	0	0	455,190	600
Nutley Township	0	2 *	0	0	0	415,358	121,875
City of Orange Township	0	25 *	22	0	0	92,850	17,030
Roseland Borough	0	1 *	0	0	0	243,882	2,009,244
South Orange Village	0	0 *	0	0	0	793,559	70,366
Verona Township	1	0 *	0	0	0	617,228	11,001
West Caldwell Township	0	0 *	0	0	0	858,339	0
West Orange Township	2	2	3	0	0	2,315,438	2,352,135
<b>Gloucester County</b>							
Clayton Borough	6	4	0	0	0	641,302	40,646
Deptford Township	10	2	0	0	0	1,633,775	2,306,296
East Greenwich Township	6	6	1	0	0	1,239,940	205,678
Elk Township	0	0	0	0	0	56,050	63,534
Franklin Township	1	1 *	1	7,590	0	430,963	204,710

**MUNICIPAL SUMMARY DATA, October 2012**

AREA NAME	AUTHORIZED	AUTHORIZED	HOUSING	OFFICE SPACE	RETAIL SPACE	RESI- DENTIAL (\$ AMOUNT)	NONRESI- DENTIAL (\$ AMOUNT)
	HOUSING UNITS	HOUSING UNITS (CENSUS DEFINITIONS)	UNITS CERTIFIED	AUTHORIZED BY BUILDING PERMITS	AUTHORIZED BY BUILDING PERMITS		
Glassboro Borough	5	5	5	0	0	825,770	1,693,863
Greenwich Township	0	1 *	0	0	0	90,635	106,757
Harrison Township	9	9	2	0	0	2,372,904	258,534
Logan Township	0	0	0	0	0	136,330	1,800,328
Mantua Township	0	0 *	0	0	0	499,253	281,486
Monroe Township	19	19	13	0	0	2,019,105	435,377
National Park Borough	0	0	0	0	0	83,094	0
Newfield Borough	0	0 *	0	0	0	26,500	2,500
Paulsboro Borough	0	0	0	0	0	84,700	3,000
Pitman Borough	0	1 *	1	0	0	171,637	10,550
South Harrison Township	0	0	0	0	0	93,970	13,800
Swedesborough Borough	0	5 *	0	0	0	0	11,200
Washington Township	0	0	0	0	0	848,043	731,458
Wenonah Borough	No report	0 *	0	No report	No report	No report	No report
West Deptford Township	0	0	0	0	0	252,385	3,778,344
Westville Borough	0	1 *	0	0	0	35,491	4,000
Woodbury City	0	0 *	0	0	0	126,348	185,270
Woodbury Heights Borough	0	0 *	0	0	0	15,447	14,000
Woolwich Township	7	7	4	0	0	834,200	206,419
<b>Hudson County</b>							
Bayonne City	6	3 *	0	0	0	1,920,670	2,748,785
East Newark Borough	0	0	0	0	0	6,350	0
Guttenberg Town	0	0	0	0	0	72,747	177,900
Harrison Town	0	0	2	48,497	0	429,211	653,336
Hoboken City	0	38 *	0	0	0	1,549,707	1,108,450
Jersey City	47	67 *	2	0	0	118,483,743	9,423,079
Kearny Town	0	0 *	1	0	0	390,928	1,098,855
North Bergen Township	0	0 *	0	0	0	1,080,346	635,560
Secaucus Town	0	47 *	6	0	0	485,754	533,570
Union City	0	0	2	0	0	885,319	413,610
Weehawken Township	0	0 *	0	0	0	1,056,652	149,050
West New York Town	0	0	15	0	0	336,728	136,450
<b>Hunterdon County</b>							
Alexandria Township	0	1	0	0	0	302,585	19,501
Bethlehem Township	0	0	0	0	0	56,825	126,041
Bloomsbury Borough	0	0	0	0	0	29,375	4,100
Califon Borough	0	0 *	0	0	0	34,084	0
Clinton Town	4	4	0	0	0	627,338	11,060
Clinton Township	0	0	0	0	0	489,298	818,800
Delaware Township	No report	1 *	1	No report	No report	No report	No report
East Amwell Township	0	1 *	0	0	0	144,858	56,717
Flemington Borough	0	5 *	0	0	0	121,528	47,563
Franklin Township	0	0	0	0	0	216,575	118,670
Frenchtown Borough	0	0	0	358	0	52,339	4,675
Glen Gardner Borough	0	0	0	0	0	5,000	3,550
Hampton Borough	0	0	0	0	0	11,800	6,000
High Bridge Borough	0	0 *	0	0	0	150,892	12,500
Holland Township	0	0	0	0	0	24,000	129,313
Kingwood Township	0	1 *	0	0	0	163,213	116,213
Lambertville City	0	0	0	0	0	239,615	37,371
Lebanon Borough	0	0	0	0	0	6,167	60,654
Lebanon Township	0	0 *	0	0	0	122,889	33,230
Milford Borough	0	0	0	0	0	6,285	5,147
Raritan Township	1	1	0	0	0	1,107,872	804,621
Readington Township	2	2	0	0	0	875,201	164,949

**MUNICIPAL SUMMARY DATA, October 2012**

AREA NAME	AUTHORIZED HOUSING UNITS	AUTHORIZED HOUSING UNITS (CENSUS DEFINITIONS)	AUTHORIZED HOUSING UNITS CERTIFIED	OFFICE SPACE AUTHORIZED BY BUILDING PERMITS	RETAIL SPACE AUTHORIZED BY BUILDING PERMITS	RESI-DENTIAL (\$ AMOUNT)	NONRESI-DENTIAL (\$ AMOUNT)
	UNITS						
Stockton Borough	No report	0 *	No report	No report	No report	No report	No report
Tewksbury Township	0	0 *	0	0	0	387,292	220,870
Union Township	0	0	0	0	0	121,894	739,409
West Amwell Township	0	0	0	0	0	60,895	42,498
<b>Mercer County</b>							
East Windsor Township	1	1	36	1,832	0	821,358	523,596
Ewing Township	49	53	0	0	0	5,387,781	13,423,133
Hamilton Township	8	10 *	4	550	0	2,090,147	2,832,790
Hightstown Borough	0	0 *	0	0	0	84,572	294,395
Hopewell Borough	0	0	0	0	0	150,180	171,934
Hopewell Township	60	60	0	0	0	6,587,671	2,005,146
Lawrence Township	2	1	0	0	0	1,246,894	3,532,231
Pennington Borough	0	0	0	0	0	216,134	24,300
Princeton Borough	0	0	0	0	0	882,897	592,219
Princeton Township	1	1	0	0	0	6,476,844	8,250,814
Trenton City	1	41	1	0	0	784,400	908,071
Robbinsville Township	41	5	1	0	0	3,685,299	1,822,433
West Windsor Township	15	15	25	0	0	2,094,510	13,357,686
<b>Middlesex County</b>							
Carteret Borough	0	14 *	0	0	0	494,091	275,353
Cranbury Township	0	0	0	0	0	142,709	280,474
Dunellen Borough	1	1 *	0	15,000	0	157,420	816,112
East Brunswick Township	0	0	2	0	0	1,284,872	1,146,402
Edison Township	5	5	3	2,100	0	3,992,416	8,294,160
Helmetta Borough	0	0	0	0	0	102,903	1,000
Highland Park Borough	0	8 *	0	0	0	0	465,695
Jamesburg Borough	0	0	0	0	0	107,854	79,350
Old Bridge Township	2	2	0	0	0	1,822,844	548,509
Metuchen Borough	2	11	2	0	0	853,931	270,891
Middlesex Borough	1	0 *	0	0	0	454,640	159,559
Milltown Borough	2	0 *	0	0	0	524,763	170,675
Monroe Township	23	23	21	0	0	5,177,269	817,938
New Brunswick City	0	11 *	0	0	0	711,664	2,653,072
North Brunswick Township	8	8	9	0	0	1,564,117	1,486,404
Perth Amboy City	2	3	32	0	0	387,425	751,499
Piscataway Township	38	38	18	0	0	3,495,985	5,662,763
Plainsboro Township	0	2	1	0	0	1,235,998	813,778
Sayreville Borough	48	48	21	0	0	4,510,493	1,158,050
South Amboy City	No report	0 *	No report	No report	No report	No report	No report
South Brunswick Township	22	22	5	751,451	0	6,533,272	19,979,213
South Plainfield Borough	0	2 *	1	30,215	0	141,353	3,234,139
South River Borough	0	0 *	0	0	0	293,072	89,183
Spotswood Borough	0	2 *	2	0	0	203,508	213,050
Woodbridge Township	2	0	0	31,400	8,875	2,410,580	8,448,076
<b>Monmouth County</b>							
Allenhurst Borough	0	0 *	1	0	0	53,125	8,000
Allentown Borough	0	0	0	0	0	21,050	40,999
Asbury Park City	0	0 *	0	0	0	671,926	233,739
Atlantic Highlands Borough	0	0	0	0	0	326,385	23,550
Avon-by-the-Sea Borough	0	2 *	0	0	0	305,309	12,360
Belmar Borough	0	0 *	1	0	0	373,399	42,680
Bradley Beach Borough	0	0 *	0	0	0	153,952	10,502
Brielle Borough	2	2	0	0	0	712,465	155,500
Colts Neck Township	0	1 *	0	0	0	51,122	0
Deal Borough	0	1 *	0	680	0	409,682	25,000

**MUNICIPAL SUMMARY DATA, October 2012**

AREA NAME	AUTHORIZED	AUTHORIZED	HOUSING	OFFICE SPACE	RETAIL SPACE	RESI-	NONRESI-
	HOUSING	HOUSING UNITS		AUTHORIZED	AUTHORIZED		
	UNITS	(CENSUS	UNITS	BY BUILDING	BY BUILDING	(\$ AMOUNT)	(\$ AMOUNT)
		DEFINITIONS)	CERTIFIED	PERMITS	PERMITS		
Eatontown Borough	0	6 *	0	0	0	607,562	66,105
Englishtown Borough	0	0	2	0	0	39,355	8,000
Fair Haven Borough	1	1	1	0	0	742,032	0
Farmingdale Borough	0	0	0	0	0	700	4,036
Freehold Borough	0	1 *	0	0	0	397,261	213,244
Freehold Township	0	1 *	0	41,151	0	618,739	4,629,554
Highlands Borough	0	0	0	0	0	170,895	41,300
Holmdel Township	0	1 *	1	0	0	756,382	563,400
Howell Township	31	11	5	0	5,958	22,175,354	366,504
Interlaken Borough	0	0 *	0	0	0	14,935	0
Keansburg Borough	0	0 *	0	0	0	188,101	108,701
Keyport Borough	0	1 *	0	0	0	111,965	68,395
Little Silver Borough	2	2	1	0	0	746,672	187,758
Loch Arbour Village	0	0	0	0	0	11,000	0
Long Branch City	69	5	0	0	0	5,278,809	257,742
Manalapan Township	12	4	21	0	0	2,856,532	85,800
Manasquan Borough	3	3	0	0	0	725,635	67,800
Marlboro Township	4	9 *	5	0	14,820	2,434,393	2,734,456
Matawan Borough	0	0 *	0	0	0	170,793	151,290
Aberdeen Township	1	2	1	0	0	534,688	491,212
Middletown Township	5	6 *	2	2,750	0	2,869,067	587,251
Millstone Township	1	0 *	1	0	0	818,636	196,147
Monmouth Beach Borough	1	2 *	4	0	0	430,578	190,000
Neptune Township	3	0 *	1	0	0	680,765	258,430
Neptune City Borough	0	0	0	0	0	82,309	436,000
Tinton Falls Borough	No report	2 *	No report	No report	No report	No report	No report
Ocean Township	3	3 *	0	0	0	1,651,630	355,031
Oceanport Borough	1	1	0	0	0	740,613	96,100
Hazlet Township	0	0	0	0	0	465,031	73,615
Red Bank Borough	0	1 *	5	0	0	189,529	339,276
Roosevelt Borough	0	0	0	0	0	15,302	400
Rumson Borough	2	2	2	0	0	3,312,103	2,000
Sea Bright Borough	No report	0 *	No report	No report	No report	No report	No report
Sea Girt Borough	1	1	2	0	0	797,197	63,100
Shrewsbury Borough	0	4 *	5	0	0	363,179	46,231
Shrewsbury Township	0	0	0	0	0	21,650	0
Lake Como Borough	0	0 *	0	0	0	92,663	35,281
Spring Lake Borough	2	2	0	0	0	2,255,550	64,550
Spring Lake Heights Boro	0	0	0	0	0	335,270	52,100
Union Beach Borough	0	0	2	0	0	103,595	0
Upper Freehold Township	0	0	0	1	0	314,393	106,360
Wall Township	5	5	2	0	0	4,445,105	778,870
West Long Branch Borough	No report	5 *	No report	No report	No report	No report	No report
<b>Morris County</b>							
Boonton Town	0	1 *	0	0	0	259,394	20,399
Boonton Township	No report	2 *	No report	No report	No report	No report	No report
Butler Borough	0	0 *	0	0	0	231,600	51,400
Chatham Borough	1	1	0	0	0	1,074,603	38,500
Chatham Township	0	4 *	2	0	0	713,369	80,550
Chester Borough	0	6 *	0	0	0	10,300	2,000
Chester Township	0	0	0	0	0	665,828	198,911
Denville Township	2	2	0	883	0	1,082,947	1,175,816
Dover Town	0	0	0	0	0	172,885	33,083
East Hanover Township	0	1 *	0	0	0	410,965	3,819,378
Florham Park Borough	0	5 *	0	0	0	0	6,000

**MUNICIPAL SUMMARY DATA, October 2012**

AREA NAME	AUTHORIZED	AUTHORIZED		HOUSING	OFFICE SPACE	RETAIL SPACE		
	HOUSING	HOUSING UNITS		UNITS	AUTHORIZED	AUTHORIZED	RESI-	NONRESI-
	UNITS	(CENSUS		CERTIFIED	BY BUILDING	BY BUILDING	DENTIAL	DENTIAL
		DEFINITIONS)			PERMITS	PERMITS	(\$ AMOUNT)	(\$ AMOUNT)
Hanover Township	2	1 *		0	12,816	0	1,184,242	3,420,146
Harding Township	1	1		1	0	0	946,069	13,475
Jefferson Township	0	1 *		0	0	0	347,601	54,691
Kinnelon Borough	0	2 *		1	0	0	1,120,528	161,150
Lincoln Park Borough	0	0		0	0	0	190,694	22,601
Madison Borough	3	1		0	0	0	1,463,180	474,098
Mendham Borough	0	0 *		0	0	0	751,544	131,675
Mendham Township	0	0		0	0	0	644,282	67,350
Mine Hill Township	0	0		0	0	0	47,600	0
Montville Township	1	1		4	0	0	2,159,067	182,125
Morris Township	0	3 *		2	0	0	1,075,417	2,194,030
Morris Plains Borough	0	7 *		0	0	0	263,848	2,300
Morristown Town	0	0		2	0	0	573,946	828,391
Mountain Lakes Borough	0	2 *		1	0	0	485,516	0
Mount Arlington Borough	0	6 *		0	0	0	181,344	2,650
Mount Olive Township	21	21		7	0	0	3,219,602	1,401,051
Netcong Borough	0	1 *		0	0	0	13,400	9,825
Parsippany-Troy Hills Twp	2	0 *		0	0	0	1,465,639	12,898,156
Long Hill Township	1	1		0	0	0	613,532	761,228
Pequannock Township	1	2 *		0	0	0	1,109,587	687,804
Randolph Township	3	1 *		3	0	0	1,673,358	161,676
Riverdale Borough	0	0		2	0	0	159,735	95,600
Rockaway Borough	0	0		0	0	0	202,274	528,525
Rockaway Township	1	1 *		0	4,274	0	1,019,947	1,635,819
Roxbury Township	1	1		1	0	0	622,946	89,103
Victory Gardens Borough	0	0		0	0	0	34,916	0
Washington Township	0	1 *		0	0	0	891,464	203,300
Wharton Borough	0	0 *		0	0	0	113,502	358,000
<b>Ocean County</b>								
Barnegat Light Borough	1	1		0	0	0	239,666	30,000
Bay Head Borough	No report	1 *		No report	No report	No report	No report	No report
Beach Haven Borough	3	3		0	0	0	1,519,850	214,000
Beachwood Borough	0	0		1	0	0	136,637	33,446
Berkeley Township	5	7 *		9	0	0	2,092,270	257,154
Brick Township	2	2		0	6,825	0	4,165,810	1,087,481
Toms River Township	15	14 *		7	2,485	1	4,586,357	8,342,781
Eagleswood Township	1	1 *		0	0	0	393,271	71,100
Harvey Cedars Borough	0	0		0	0	0	157,512	17,500
Island Heights Borough	0	0		0	0	0	70,251	1,299,500
Jackson Township	2	2		12	0	0	1,745,414	240,962
Lacey Township	4	4		5	0	0	1,573,994	290,489
Lakehurst Borough	No report	0		No report	No report	No report	No report	No report
Lakewood Township	12	7		13	0	0	3,810,363	835,298
Lavallette Borough	4	4		1	0	0	2,122,815	34,250
Little Egg Harbor Township	2	2		5	0	0	660,903	176,691
Long Beach Township	12	12		5	0	0	7,380,745	201,851
Manchester Township	0	0		2	0	0	1,474,358	110,102
Mantoloking Borough	No report	0 *		No report	No report	No report	No report	No report
Ocean Township	9	9		7	0	0	1,455,578	52,225
Ocean Gate Borough	2	2		0	0	0	750,560	0
Pine Beach Borough	0	0 *		0	0	0	33,495	0
Plumsted Township	1	1 *		0	0	0	290,151	86,708
Point Pleasant Borough	4	4		2	0	0	1,802,489	20,675
Point Pleasant Beach Boro	0	0		0	0	0	379,359	162,312
Seaside Heights Borough	14	0 *		0	0	0	626,990	3,300

**MUNICIPAL SUMMARY DATA, October 2012**

AREA NAME	AUTHORIZED	AUTHORIZED	HOUSING	OFFICE SPACE	RETAIL SPACE	RESI-	NONRESI-
	HOUSING	HOUSING UNITS		AUTHORIZED	AUTHORIZED		
	UNITS	(CENSUS	UNITS	BY BUILDING	BY BUILDING	(\$ AMOUNT)	(\$ AMOUNT)
		DEFINITIONS)	CERTIFIED	PERMITS	PERMITS		
Seaside Park Borough	2	1 *	0	0	0	577,420	81,850
Ship Bottom Borough	1	1	0	0	0	349,596	18,900
South Toms River Borough	0	0	0	0	0	146,282	0
Stafford Township	9	21 *	22	0	25,000	2,426,775	1,090,499
Surf City Borough	2	2	1	0	0	1,081,133	600
Tuckerton Borough	0	0 *	0	0	0	0	385,251
Barneget Township	78	55	5	0	0	3,082,535	993,392
<b>Passaic County</b>							
Bloomington Borough	0	0	0	0	0	114,724	0
Clifton City	0	10 *	7	8,566	0	1,880,560	2,255,680
Haledon Borough	0	1 *	0	0	0	0	0
Hawthorne Borough	0	1 *	0	0	0	374,814	51,001
Little Falls Township	0	0	0	0	0	356,443	133,947
North Haledon Borough	0	0	0	0	0	117,016	11,000
Passaic City	0	6 *	48	0	4,914	498,303	515,424
Paterson City	No report	2 *	No report	No report	No report	No report	No report
Pompton Lakes Borough	1	0 *	0	0	0	557,468	17,000
Prospect Park Borough	0	0 *	0	0	0	37,421	13,800
Ringwood Borough	0	1 *	1	0	0	578,593	24,200
Totowa Borough	0	1 *	0	0	0	190,753	1,110,539
Wanaque Borough	0	0	4	0	0	315,400	10,250
Wayne Township	1	0	2	0	0	2,311,130	1,257,532
West Milford Township	1	1	0	0	0	897,733	72,975
Woodland Park Borough	10	10	17	0	0	1,572,442	338,580
<b>Salem County</b>							
Alloway Township	0	0	0	460	0	0	65,000
Elmer Borough	0	0	0	0	0	37,825	8,350
Elsinboro Township	0	0	0	0	0	2,850	0
Lower Alloways Creek Twp	0	0	0	0	0	45,700	40,000
Mannington Township	0	0	0	0	0	97,248	5,000
Oldmans Township	4	4	0	0	0	453,900	4,000
Penns Grove Borough	0	0	0	0	0	45,724	0
Pennsville Township	1	0	0	0	400	294,510	425,480
Pilesgrove Township	0	0	0	0	0	62,000	47,468
Pittsgrove Township	0	0	0	0	0	137,585	154,744
Quinton Township	0	0	2	0	0	60,194	29,050
Salem City	0	0	0	0	0	71,398	8,547
Carneys Point Township	0	0	0	0	0	85,142	318,090
Upper Pittsgrove Township	0	0	1	0	0	85,400	25,037
Woodstown Borough	0	0 *	0	0	0	65,017	6,600
<b>Somerset County</b>							
Bedminster Township	0	0	0	0	0	407,630	451,650
Bernards Township	0	0	1	0	0	1,389,784	885,563
Bernardsville Borough	0	1 *	0	0	0	438,153	347,308
Bound Brook Borough	0	7 *	0	0	0	252,808	117,579
Branchburg Township	1	1	0	98,768	0	657,347	19,054,105
Bridgewater Township	2	1	1	0	0	2,050,805	4,120,825
Far Hills Borough	No report	0	No report	No report	No report	No report	No report
Franklin Township	19	16	33	0	0	5,682,724	4,221,080
Green Brook Township	0	0	0	0	0	70,453	8,475
Hillsborough Township	16	16	2	0	0	3,432,000	1,294,469
Manville Borough	0	0	0	0	0	123,302	18,000
Millstone Borough	0	0	0	0	0	1,500	2,000
Montgomery Township	1	0 *	3	0	0	1,585,623	985,871
North Plainfield Borough	0	0 *	0	0	0	670,906	174,968

**MUNICIPAL SUMMARY DATA, October 2012**

AREA NAME	AUTHORIZED HOUSING UNITS	AUTHORIZED HOUSING UNITS (CENSUS DEFINITIONS)	HOUSING UNITS CERTIFIED	OFFICE SPACE AUTHORIZED BY BUILDING PERMITS	RETAIL SPACE AUTHORIZED BY BUILDING PERMITS	RESI-DENTIAL (\$ AMOUNT)	NONRESI-DENTIAL (\$ AMOUNT)
	UNITS						
Peapack-Gladstone Borough	0	0 *	0	0	0	442,070	71,500
Raritan Borough	2	2	0	0	0	256,099	344,005
Rocky Hill Borough	0	0	0	0	0	14,850	157,400
Somerville Borough	0	0 *	0	0	0	162,290	1,190,825
South Bound Brook Boro	0	8 *	0	0	0	89,127	2,105
Warren Township	5	2	2	0	0	2,198,159	919,119
Watchung Borough	0	0	0	0	0	78,000	184,900
<b>Sussex County</b>							
Andover Borough	No report	0 *	No report	No report	No report	No report	No report
Andover Township	0	0	0	0	0	66,828	58,459
Branchville Borough	0	0	0	0	0	59,848	2,500
Byram Township	0	1 *	0	0	0	376,553	7,200
Frankford Township	1	1	3	0	0	637,943	1,141,600
Franklin Borough	0	0	0	0	0	96,459	243,150
Fredon Township	0	0	0	0	0	47,850	45,300
Green Township	1	2 *	1	0	0	125,350	508,176
Hamburg Borough	0	0	0	2,466	0	64,451	136,000
Hampton Township	1	1	0	0	0	112,430	491,355
Hardyston Township	1	0	1	0	0	417,119	48,850
Hopatcong Borough	1	1 *	0	0	0	636,288	72,791
Lafayette Township	0	0	0	0	0	24,780	10,250
Montague Township	1	1	0	0	0	163,850	55,925
Newton Town	0	0	0	0	0	133,551	43,346
Ogdensburg Borough	0	0 *	0	0	0	5,000	36,376
Sandyston Township	0	0	0	0	0	25,936	24,600
Sparta Township	1	1	3	0	0	1,422,571	100,580
Stanhope Borough	0	0 *	0	0	0	88,690	61,200
Stillwater Township	0	1 *	0	0	0	189,287	24,335
Sussex Borough	0	0	0	0	0	2,282	30,525
Vernon Township	0	7 *	1	0	11,665	604,080	761,575
Walpack Township	0	0	0	0	0	0	0
Wantage Township	1	1 *	1	0	0	177,864	300,036
<b>Union County</b>							
Berkeley Heights Township	1	1	0	0	0	285,150	217,804
Clark Township	2	2	0	0	0	1,298,476	173,380
Cranford Township	0	7 *	0	0	0	887,460	1,970,097
Elizabeth City	0	7 *	0	0	0	472,560	12,253,232
Fanwood Borough	0	1 *	1	0	0	357,474	115,001
Garwood Borough	0	2 *	0	0	0	212,555	11,950
Hillside Township	0	0	0	0	0	315,601	401,800
Kenilworth Borough	0	0	0	0	0	215,850	777,579
Linden City	1	2 *	2	0	0	686,534	933,474
Mountainside Borough	0	0 *	0	0	0	223,924	140,983
New Providence Borough	0	2 *	0	0	0	667,273	229,800
Plainfield City	0	0	0	0	0	621,953	1,249,901
Rahway City	0	0	0	0	0	403,406	2,297,798
Roselle Borough	0	0	0	0	0	321,259	95,750
Roselle Park Borough	0	2 *	0	0	0	309,823	105,845
Scotch Plains Township	3	3 *	3	0	0	1,689,890	421,200
Springfield Township	1	16 *	9	0	0	1,549,566	25,600
Summit City	0	0	0	0	0	2,050,486	711,481
Union Township	1	1	0	0	0	1,865,779	776,039
Westfield Town	3	3 *	0	0	0	4,022,806	1,459,074
Winfield Township	0	0	0	0	0	0	0
<b>Warren County</b>							

**MUNICIPAL SUMMARY DATA, October 2012**

AREA NAME	AUTHORIZED	AUTHORIZED	HOUSING	OFFICE SPACE	RETAIL SPACE	RESI-	NONRESI-
	HOUSING	HOUSING UNITS	UNITS	AUTHORIZED	AUTHORIZED	DENTIAL	DENTIAL
	UNITS	(CENSUS	CERTIFIED	BY BUILDING	BY BUILDING	(\$ AMOUNT)	(\$ AMOUNT)
		DEFINITIONS)		PERMITS	PERMITS		
Allamuchy Township	0	0	4	0	0	0	212,363
Alpha Borough	0	0	0	0	0	107,892	19,650
Belvidere Town	0	0 *	0	0	0	33,728	0
Blairstown Township	0	0	0	0	0	185,697	81,750
Franklin Township	0	0	0	0	0	113,166	1,500
Frelinghuysen Township	0	0 *	0	0	0	277,100	92,023
Greenwich Township	0	0	0	0	0	47,515	372,442
Hackettstown Town	0	8 *	0	0	0	8,000	251,810
Hardwick Township	0	0	0	0	0	60,790	27,230
Harmony Township	0	0	0	0	0	46,000	29,602
Hope Township	0	0	0	0	0	50,285	7,000
Independence Township	1	1	0	0	0	265,132	17,900
Knowlton Township	0	0	0	0	0	73,945	18,460
Liberty Township	0	0	0	0	0	59,039	28,700
Lopatcong Township	0	6 *	2	0	0	79,588	129,872
Mansfield Township	0	0	0	0	0	187,921	34,500
Oxford Township	0	0	1	0	0	26,400	23,345
Pahaquary Township	See Hardwick Twp.						
Phillipsburg Town	1	1	0	0	0	349,849	46,290
Pohatcong Township	0	1 *	0	0	0	149,497	83,550
Washington Borough	0	0	2	0	0	43,155	23,195
Washington Township	0	0	0	0	4,001	172,291	38,000
White Township	0	0 *	0	0	0	45,362	458,466
State Buildings	0		0	0	0	0	30,466,037

*The New Jersey*  
**CONSTRUCTION REPORTER**

**OCTOBER 2012 DATA**

DISTRIBUTED BY THE

*New Jersey Department of*  
**COMMUNITY AFFAIRS**  
DIVISION OF CODES AND STANDARDS  
101 South Broad Street,  
PO Box 802  
Trenton, NJ 08625-0802  
(609) 292-7898  
[www.nj.gov/dca/divisions/codes/reporter/](http://www.nj.gov/dca/divisions/codes/reporter/)



DEPARTMENT OF  
Community  
AFFAIRS

*In cooperation with the*  
**STATE DATA CENTER of the**  
**NEW JERSEY DEPARTMENT OF LABOR AND**  
**WORKFORCE DEVELOPMENT**

---

*Production and Distribution Staff*

**RICHARD BYRNE**  
**CYNTHIA CORDERO**  
**LYNN FERRARA**  
**AMY FENWICK FRANK**  
**JOHN LAGO**  
**CHARLES PIERSON, JR.**  
**ANTHONY SCHIAVINO**  
**SUSAN WOIDILL**

**2012**