



State of New Jersey 2014-15

OVERVIEW

UNION
WINFIELD TWP

GRADE SPAN PK-08

39-5810-060
WINFIELD TOWNSHIP
7 1/2 GULFSTREAM AVENUE
WINFIELD, NJ 07036

The New Jersey Department of Education (NJDOE) is pleased to present these annual reports of School Performance. These reports are designed to inform parents, educators and communities about how well a school is performing and preparing its students for college and careers.

In particular, the School Performance Reports seek to:

- **Focus** attention on metrics that are indicative of college and career readiness.
- **Benchmark** a school's performance against other peer schools that are educating similar students, against statewide outcomes, and against state targets to illuminate and build upon a school's strengths and identify areas for improvement.
- **Improve** educational outcomes for students by providing both longitudinal and growth data so that progress can be measured as part of an individual school's efforts to engage in continuous improvement.

While the New Jersey School Performance Reports seek to bring more information to educators and stakeholders about the performance of schools, they do not seek to distill the performance of schools into a single metric, a single score, or a simplified conclusion. Instead, the intention is that educators and stakeholders will engage in deep, lengthy conversations about the full range of the data presented. As educators know well, measuring school performance is both an art and a science. While the School Performance Report brings attention to important student outcomes, NJDOE does not collect data about other essential elements of a school, such as the provision of opportunities to participate and excel in extracurricular activities; the development of non-cognitive skills like time management and perseverance; the pervasiveness of a positive school culture or climate; or the attainment of other employability and technical skills, as many of these data are beyond both the capacity and resources of schools to measure and collect well.

To learn more about New Jersey's school accountability system, please visit: <http://www.nj.gov/education/educators/>.

DEMOGRAPHIC INFORMATION

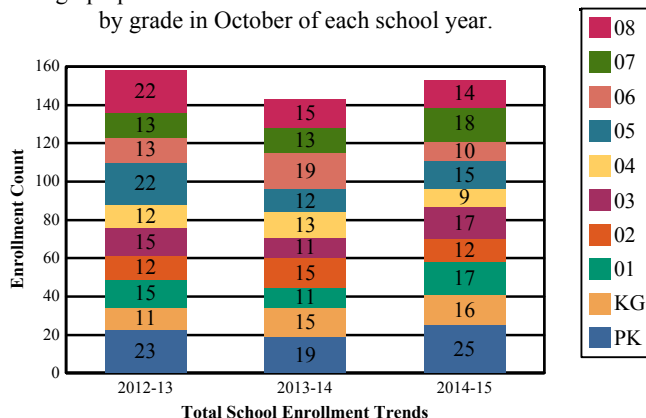
UNION
WINFIELD TWP

GRADE SPAN PK-08

39-5810-060
WINFIELD TOWNSHIP
7 1/2 GULFSTREAM AVENUE
WINFIELD, NJ 07036

Enrollment by Grade

This graph presents the count of students who were 'on roll' by grade in October of each school year.



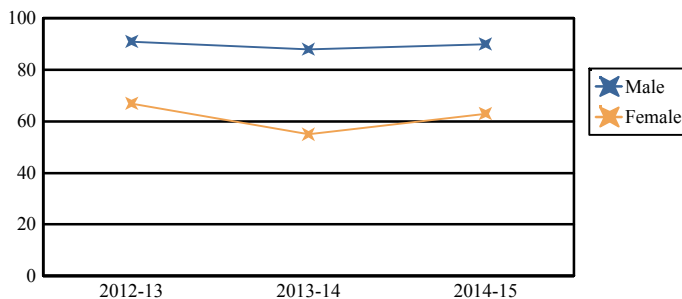
Note: "UG" represents the count of students who are 'on roll' in this school but who are educated in ungraded classrooms, meaning that the classrooms may contain students from multiple grade levels.

Total School Enrollment

School Year	Enrollment
2012-13	158
2013-14	143
2014-15	153

Enrollment by Gender

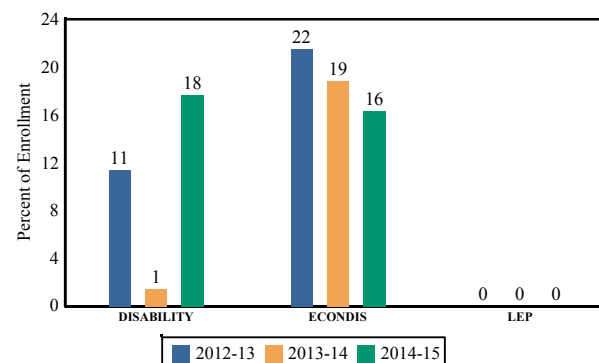
This graph presents the count of students by gender who were 'on roll' in October of each school year.



	Male	Female
2012-13	91	67
2013-14	88	55
2014-15	90	63

Enrollment Trends by Program Participation

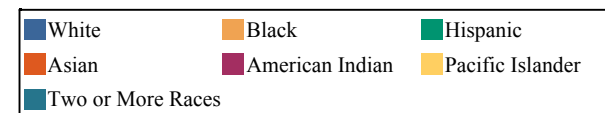
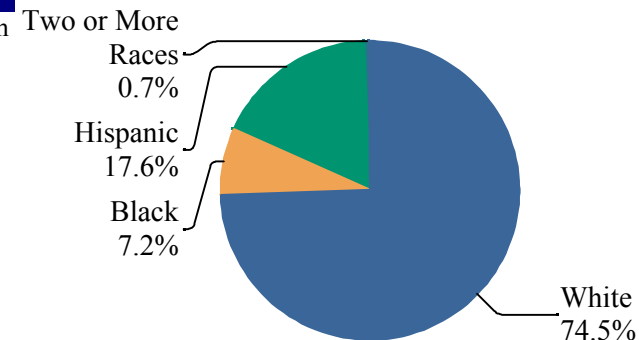
This graph presents the percentages of students by program participation who were 'on roll' in October of each school year.



Current Year Enrollment by Program Participation		
2014-15	Count of Students	% of Enrollment
Students with Disability	27	18%
Economically Disadvantaged Students	25	16.3%
English Language Learners	0	0.0%

Enrollment by Ethnic/Racial Subgroup

This graph presents the percentages of enrollment for each subgroup defined by the No Child Left Behind Act of 2001.



Language Diversity

This table presents the percentage of students who primarily speak each language in their home.

2014-15	Percent
English	99.3%
Spanish	0.7%

ACADEMIC ACHIEVEMENT

UNION
WINFIELD TWP

GRADE SPAN PK-08

39-5810-060
WINFIELD TOWNSHIP
7 1/2 GULFSTREAM AVENUE
WINFIELD, NJ 07036

The Academic Achievement section measures the content knowledge that students have in English Language Arts/Literacy (ELA/L) and Math as demonstrated in the 2014-2015 *Partnership for Assessment of Readiness for College and Careers* (PARCC) assessments. The below chart consist of three columns. The first column - Schoolwide Performance - includes the percentage of students in ELA/L and Math who met or exceeded grade level expectations. The middle column - Peer School Percentile - indicates how the school's outcomes compared to its peers. The last column - Statewide Percentile - indicates how the school's outcomes compared to schools across the state.

Academic Achievement Indicators	Schoolwide Performance	Peer Percentile	State Percentile
English Language Arts/Literacy Met or Exceeded Expectation	44%	26	42
Math Met or Exceeded Expectation	31%		

ESEA Waiver - English Language Arts/Literacy

This table presents, for each subgroup in the school, the total number of valid test scores, the percentage of students who met or exceeded expectations, the assessment participation goal, and the participation rate. The participation goal is established as 95% by the United States Department of Education.

Subgroups	Valid Scores	% Meeting Standards	Participation Goal	Participation Rate	Met Participation?
Schoolwide	84	44.1%	95%	98.8%	YES
White	66	45.4%	95%	100%	YES
African American	-	-	--	--	--
Hispanic	-	-	--	--	--
American Indian	-	-	--	--	--
Asian	-	-	--	--	--
Two or More Races	-	-	--	--	--
Students with Disability	-	-	--	--	--
English Language Learners	-	-	--	--	--
Economically Disadvantaged Students	-	-	--	--	--

YES* = Met Participation Rate (Participation Averaging applied)

Data is presented for subgroups when the count is high enough under ESEA Waiver suppression rules.

ACADEMIC ACHIEVEMENT

UNION
WINFIELD TWP

GRADE SPAN PK-08

39-5810-060
WINFIELD TOWNSHIP
7 1/2 GULFSTREAM AVENUE
WINFIELD, NJ 07036

ESEA Waiver - Math

This table presents, for each subgroup in the school, the total number of valid test scores, the percentage of students who met or exceeded expectations, the assessment participation goal, and the participation rate. The participation goal is established as 95% by the United States Department of Education.

Subgroups	Valid Scores	% Meeting Standards	Participation Goal	Participation Rate	Met Participation?
Schoolwide	84	31%	95%	98.8%	YES
White	66	36.3%	95%	100%	YES
African American	-	-	--	--	--
Hispanic	-	-	--	--	--
American Indian	-	-	--	--	--
Asian	-	-	--	--	--
Two or More Races	-	-	--	--	--
Students with Disability	-	-	--	--	--
English Learner Students	-	-	--	--	--
Economically Disadvantaged Students	-	-	--	--	--

YES* = Met Participation Rate (Participation Averaging applied)

Data is presented for subgroups when the count is high enough under ESEA Waiver suppression rules.

PARCC Performance Level

The PARCC assesses how well students have learned grade-level material in English Language Arts/Literacy (ELA/L) and Math. The tests include questions that measure students' fundamental skills and knowledge, and require them to think critically, solve problems and support or explain their answers.

The PARCC reports students' overall scale scores that range from 650 to 850. To determine whether students have met academic expectations for their grade level/course in ELA/L and Math, students' overall scale scores are categorized into five Performance Levels. Students performing at levels 4 and 5 (met or exceeded expectations) have demonstrated readiness for the next grade level/course, and are on track for college and careers.

Five Performance Levels				
Level 1: Did Not Yet Meet Expectations <i>(Min. 650)</i>	Level 2: Partially Met Expectations	Level 3: Approached Expectations	Level 4: Met Expectations	Level 5: Exceeded Expectations <i>(Max. 850)</i>

ACADEMIC ACHIEVEMENT

UNION
WINFIELD TWP

GRADE SPAN PK-08

39-5810-060
WINFIELD TOWNSHIP
7 1/2 GULFSTREAM AVENUE
WINFIELD, NJ 07036

PARCC ELA Performance Distribution - Grade - 03

This table presents the grade level outcomes, as measured by PARCC, in all five performance levels for all subgroups. PARCC consists of five performance levels: Level 1 - Did not yet meet grade-level expectations, Level 2 -Partially met expectations, Level 3 - Approached expectations, Level 4 - Met expectations, and Level 5 - Exceeded expectations.

Subgroup	Valid Scores	Mean Scale Score	State Mean Scale Score	% Level_1	% Level_2	% Level_3	% Level_4	% Level_5	% Met/ Exceeded Expectation	State % Met/Exceeded Expectation
Schoolwide	17	738	744	6%	24%	41%	29%	0%	29%	44%
White	14	742	753	7%	14%	43%	36%	0%	36%	55%
African American	-	-	725	-	-	-	-	-	-	26%
Hispanic	-	-	727	-	-	-	-	-	-	26%
American Indian	-	-	738	-	-	-	-	-	-	40%
Asian	-	-	769	-	-	-	-	-	-	70%
Two or More Races	-	-	751	-	-	-	-	-	-	53%
Students with Disability	-	-	718	-	-	-	-	-	-	24%
English Language Learners	-	-	709	-	-	-	-	-	-	11%
Economically Disadvantaged Students	-	-	724	-	-	-	-	-	-	24%

PARCC ELA Performance Distribution - Grade - 04

This table presents the grade level outcomes, as measured by PARCC, in all five performance levels for all subgroups. PARCC consists of five performance levels: Level 1 - Did not yet meet grade-level expectations, Level 2 -Partially met expectations, Level 3 - Approached expectations, Level 4 - Met expectations, and Level 5 - Exceeded expectations.

Subgroup	Valid Scores	Mean Scale Score	State Mean Scale Score	% Level_1	% Level_2	% Level_3	% Level_4	% Level_5	% Met/ Exceeded Expectation	State % Met/Exceeded Expectation
Schoolwide	-	-	751	-	-	-	-	-	-	52%
White	-	-	758	-	-	-	-	-	-	63%
African American	-	-	733	-	-	-	-	-	-	30%
Hispanic	-	-	737	-	-	-	-	-	-	35%
American Indian	-	-	746	-	-	-	-	-	-	52%
Asian	-	-	773	-	-	-	-	-	-	78%
Two or More Races	-	-	760	-	-	-	-	-	-	62%
Students with Disability	-	-	725	-	-	-	-	-	-	25%
English Language Learners	-	-	717	-	-	-	-	-	-	15%
Economically Disadvantaged Students	-	-	734	-	-	-	-	-	-	31%

PARCC ELA Performance Distribution - Grade - 05

This table presents the grade level outcomes, as measured by PARCC, in all five performance levels for all subgroups. PARCC consists of five performance levels: Level 1 - Did not yet meet grade-level expectations, Level 2 -Partially met expectations, Level 3 - Approached expectations, Level 4 - Met expectations, and Level 5 - Exceeded expectations.

Subgroup	Valid Scores	Mean Scale Score	State Mean Scale Score	% Level_1	% Level_2	% Level_3	% Level_4	% Level_5	% Met/ Exceeded Expectation	State % Met/Exceeded Expectation
Schoolwide	13	750	751	8%	8%	23%	62%	0%	62%	53%
White	-	-	757	-	-	-	-	-	-	62%
African American	-	-	734	-	-	-	-	-	-	31%
Hispanic	-	-	737	-	-	-	-	-	-	35%
American Indian	-	-	746	-	-	-	-	-	-	45%
Asian	-	-	771	-	-	-	-	-	-	77%
Two or More Races	-	-	758	-	-	-	-	-	-	61%
Students with Disability	-	-	723	-	-	-	-	-	-	21%
English Language Learners	-	-	717	-	-	-	-	-	-	15%
Economically Disadvantaged Students	-	-	734	-	-	-	-	-	-	31%

ACADEMIC ACHIEVEMENT

UNION
WINFIELD TWP

GRADE SPAN PK-08

39-5810-060
WINFIELD TOWNSHIP
7 1/2 GULFSTREAM AVENUE
WINFIELD, NJ 07036

PARCC ELA Performance Distribution - Grade - 06

This table presents the grade level outcomes, as measured by PARCC, in all five performance levels for all subgroups. PARCC consists of five performance levels: Level 1 - Did not yet meet grade-level expectations, Level 2 -Partially met expectations, Level 3 - Approached expectations, Level 4 - Met expectations, and Level 5 - Exceeded expectations.

Subgroup	Valid Scores	Mean Scale Score	State Mean Scale Score	% Level_1	% Level_2	% Level_3	% Level_4	% Level_5	% Met/ Exceeded Expectation	State % Met/Exceeded Expectation
Schoolwide	12	758	749	0%	0%	42%	58%	0%	58%	50%
White	-	-	755	-	-	-	-	-	-	59%
African American	-	-	732	-	-	-	-	-	-	29%
Hispanic	-	-	736	-	-	-	-	-	-	34%
American Indian	-	-	743	-	-	-	-	-	-	39%
Asian	-	-	770	-	-	-	-	-	-	77%
Two or More Races	-	-	753	-	-	-	-	-	-	57%
Students with Disability	-	-	718	-	-	-	-	-	-	17%
English Language Learners	-	-	711	-	-	-	-	-	-	11%
Economically Disadvantaged Students	-	-	733	-	-	-	-	-	-	30%

ACADEMIC ACHIEVEMENT

UNION
WINFIELD TWP

GRADE SPAN PK-08

39-5810-060
WINFIELD TOWNSHIP
7 1/2 GULFSTREAM AVENUE
WINFIELD, NJ 07036

PARCC ELA Performance Distribution - Grade - 07

This table presents the grade level outcomes, as measured by PARCC, in all five performance levels for all subgroups. PARCC consists of five performance levels: Level 1 - Did not yet meet grade-level expectations, Level 2 -Partially met expectations, Level 3 - Approached expectations, Level 4 - Met expectations, and Level 5 - Exceeded expectations.

Subgroup	Valid Scores	Mean Scale Score	State Mean Scale Score	% Level_1	% Level_2	% Level_3	% Level_4	% Level_5	% Met/ Exceeded Expectation	State % Met/Exceeded Expectation
Schoolwide	18	734	750	22%	28%	22%	17%	11%	28%	53%
White	15	732	757	27%	27%	20%	13%	13%	27%	61%
African American	-	-	730	-	-	-	-	-	-	31%
Hispanic	-	-	736	-	-	-	-	-	-	36%
American Indian	-	-	746	-	-	-	-	-	-	49%
Asian	-	-	777	-	-	-	-	-	-	80%
Two or More Races	-	-	756	-	-	-	-	-	-	58%
Students with Disability	-	-	713	-	-	-	-	-	-	18%
English Language Learners	-	-	703	-	-	-	-	-	-	11%
Economically Disadvantaged Students	-	-	733	-	-	-	-	-	-	33%

ACADEMIC ACHIEVEMENT

UNION
WINFIELD TWP

GRADE SPAN PK-08

39-5810-060
WINFIELD TOWNSHIP
7 1/2 GULFSTREAM AVENUE
WINFIELD, NJ 07036

PARCC ELA Performance Distribution - Grade - 08

This table presents the grade level outcomes, as measured by PARCC, in all five performance levels for all subgroups. PARCC consists of five performance levels: Level 1 - Did not yet meet grade-level expectations, Level 2 -Partially met expectations, Level 3 - Approached expectations, Level 4 - Met expectations, and Level 5 - Exceeded expectations.

Subgroup	Valid Scores	Mean Scale Score	State Mean Scale Score	% Level_1	% Level_2	% Level_3	% Level_4	% Level_5	% Met/ Exceeded Expectation	State % Met/Exceeded Expectation
Schoolwide	14	753	750	14%	0%	36%	43%	7%	50%	53%
White	12	758	757	8%	0%	33%	50%	8%	58%	61%
African American	-	-	730	-	-	-	-	-	-	31%
Hispanic	-	-	735	-	-	-	-	-	-	37%
American Indian	-	-	741	-	-	-	-	-	-	49%
Asian	-	-	778	-	-	-	-	-	-	80%
Two or More Races	-	-	753	-	-	-	-	-	-	55%
Students with Disability	-	-	713	-	-	-	-	-	-	16%
English Language Learners	-	-	701	-	-	-	-	-	-	9%
Economically Disadvantaged Students	-	-	732	-	-	-	-	-	-	34%

ACADEMIC ACHIEVEMENT

UNION
WINFIELD TWP

GRADE SPAN PK-08

39-5810-060
WINFIELD TOWNSHIP
7 1/2 GULFSTREAM AVENUE
WINFIELD, NJ 07036

PARCC MATH - Performance Distribution - Grade - 03

This table presents the grade level outcomes, as measured by PARCC, in all five performance levels for all subgroups. PARCC consists of five performance levels: Level 1 - Did not yet meet grade-level expectations, Level 2 -Partially met expectations, Level 3 - Approached expectations, Level 4 - Met expectations, and Level 5 - Exceeded expectations.

Subgroup	Valid Scores	Mean Scale Score	State Mean Scale Score	% Level_1	% Level_2	% Level_3	% Level_4	% Level_5	% Met/ Exceeded Expectation	State % Met/Exceeded Expectation
Schoolwide	17	738	746	6%	24%	29%	41%	0%	41%	46%
White	14	739	752	7%	21%	29%	43%	0%	43%	56%
African American	-	-	728	-	-	-	-	-	-	25%
Hispanic	-	-	733	-	-	-	-	-	-	28%
American Indian	-	-	742	-	-	-	-	-	-	41%
Asian	-	-	772	-	-	-	-	-	-	77%
Two or More Races	-	-	751	-	-	-	-	-	-	54%
Students with Disability	-	-	727	-	-	-	-	-	-	27%
English Language Learners	-	-	724	-	-	-	-	-	-	17%
Economically Disadvantaged Students	-	-	730	-	-	-	-	-	-	26%

ACADEMIC ACHIEVEMENT

UNION
WINFIELD TWP

GRADE SPAN PK-08

39-5810-060
WINFIELD TOWNSHIP
7 1/2 GULFSTREAM AVENUE
WINFIELD, NJ 07036

PARCC MATH - Performance Distribution - Grade - 04

This table presents the grade level outcomes, as measured by PARCC, in all five performance levels for all subgroups. PARCC consists of five performance levels: Level 1 - Did not yet meet grade-level expectations, Level 2 -Partially met expectations, Level 3 - Approached expectations, Level 4 - Met expectations, and Level 5 - Exceeded expectations.

Subgroup	Valid Scores	Mean Scale Score	State Mean Scale Score	% Level_1	% Level_2	% Level_3	% Level_4	% Level_5	% Met/ Exceeded Expectation	State % Met/Exceeded Expectation
Schoolwide	-	-	744	-	-	-	-	-	-	42%
White	-	-	749	-	-	-	-	-	-	50%
African American	-	-	727	-	-	-	-	-	-	20%
Hispanic	-	-	732	-	-	-	-	-	-	26%
American Indian	-	-	740	-	-	-	-	-	-	40%
Asian	-	-	769	-	-	-	-	-	-	75%
Two or More Races	-	-	750	-	-	-	-	-	-	52%
Students with Disability	-	-	724	-	-	-	-	-	-	21%
English Language Learners	-	-	722	-	-	-	-	-	-	15%
Economically Disadvantaged Students	-	-	730	-	-	-	-	-	-	23%

ACADEMIC ACHIEVEMENT

UNION
WINFIELD TWP

GRADE SPAN PK-08

39-5810-060
WINFIELD TOWNSHIP
7 1/2 GULFSTREAM AVENUE
WINFIELD, NJ 07036

PARCC MATH - Performance Distribution - Grade - 05

This table presents the grade level outcomes, as measured by PARCC, in all five performance levels for all subgroups. PARCC consists of five performance levels: Level 1 - Did not yet meet grade-level expectations, Level 2 -Partially met expectations, Level 3 - Approached expectations, Level 4 - Met expectations, and Level 5 - Exceeded expectations.

Subgroup	Valid Scores	Mean Scale Score	State Mean Scale Score	% Level_1	% Level_2	% Level_3	% Level_4	% Level_5	% Met/ Exceeded Expectation	State % Met/Exceeded Expectation
Schoolwide	13	735	744	8%	15%	54%	23%	0%	23%	42%
White	-	-	749	-	-	-	-	-	-	49%
African American	-	-	728	-	-	-	-	-	-	21%
Hispanic	-	-	733	-	-	-	-	-	-	26%
American Indian	-	-	745	-	-	-	-	-	-	46%
Asian	-	-	768	-	-	-	-	-	-	74%
Two or More Races	-	-	749	-	-	-	-	-	-	50%
Students with Disability	-	-	724	-	-	-	-	-	-	19%
English Language Learners	-	-	724	-	-	-	-	-	-	17%
Economically Disadvantaged Students	-	-	731	-	-	-	-	-	-	23%

ACADEMIC ACHIEVEMENT

UNION
WINFIELD TWP

GRADE SPAN PK-08

39-5810-060
WINFIELD TOWNSHIP
7 1/2 GULFSTREAM AVENUE
WINFIELD, NJ 07036

PARCC MATH - Performance Distribution - Grade - 06

This table presents the grade level outcomes, as measured by PARCC, in all five performance levels for all subgroups. PARCC consists of five performance levels: Level 1 - Did not yet meet grade-level expectations, Level 2 -Partially met expectations, Level 3 - Approached expectations, Level 4 - Met expectations, and Level 5 - Exceeded expectations.

Subgroup	Valid Scores	Mean Scale Score	State Mean Scale Score	% Level_1	% Level_2	% Level_3	% Level_4	% Level_5	% Met/ Exceeded Expectation	State % Met/Exceeded Expectation
Schoolwide	12	740	743	0%	33%	42%	17%	8%	25%	42%
White	-	-	749	-	-	-	-	-	-	50%
African American	-	-	726	-	-	-	-	-	-	19%
Hispanic	-	-	731	-	-	-	-	-	-	25%
American Indian	-	-	740	-	-	-	-	-	-	35%
Asian	-	-	768	-	-	-	-	-	-	75%
Two or More Races	-	-	745	-	-	-	-	-	-	44%
Students with Disability	-	-	718	-	-	-	-	-	-	15%
English Language Learners	-	-	718	-	-	-	-	-	-	14%
Economically Disadvantaged Students	-	-	729	-	-	-	-	-	-	23%

ACADEMIC ACHIEVEMENT

UNION
WINFIELD TWP

GRADE SPAN PK-08

39-5810-060
WINFIELD TOWNSHIP
7 1/2 GULFSTREAM AVENUE
WINFIELD, NJ 07036

PARCC MATH - Performance Distribution - Grade - 07

This table presents the grade level outcomes, as measured by PARCC, in all five performance levels for all subgroups. PARCC consists of five performance levels: Level 1 - Did not yet meet grade-level expectations, Level 2 - Partially met expectations, Level 3 - Approached expectations, Level 4 - Met expectations, and Level 5 - Exceeded expectations.

Subgroup	Valid Scores	Mean Scale Score	State Mean Scale Score	% Level_1	% Level_2	% Level_3	% Level_4	% Level_5	% Met/Exceeded Expectation	State % Met/Exceeded Expectation
Schoolwide	18	728	740	6%	44%	28%	22%	0%	22%	38%
White	15	728	745	7%	47%	27%	20%	0%	20%	46%
African American	-	-	725	-	-	-	-	-	-	17%
Hispanic	-	-	730	-	-	-	-	-	-	23%
American Indian	-	-	734	-	-	-	-	-	-	32%
Asian	-	-	760	-	-	-	-	-	-	68%
Two or More Races	-	-	742	-	-	-	-	-	-	43%
Students with Disability	-	-	715	-	-	-	-	-	-	11%
English Language Learners	-	-	717	-	-	-	-	-	-	11%
Economically Disadvantaged Students	-	-	728	-	-	-	-	-	-	21%

ACADEMIC ACHIEVEMENT

UNION
WINFIELD TWP

GRADE SPAN PK-08

39-5810-060
WINFIELD TOWNSHIP
7 1/2 GULFSTREAM AVENUE
WINFIELD, NJ 07036

PARCC MATH - Performance Distribution - Grade - 08

This table presents the grade level outcomes, as measured by PARCC, in all five performance levels for all subgroups. PARCC consists of five performance levels: Level 1 - Did not yet meet grade-level expectations, Level 2 - Partially met expectations, Level 3 - Approached expectations, Level 4 - Met expectations, and Level 5 - Exceeded expectations.

Subgroup	Valid Scores	Mean Scale Score	State Mean Scale Score	% Level_1	% Level_2	% Level_3	% Level_4	% Level_5	% Met/Exceeded Expectation	State % Met/Exceeded Expectation
Schoolwide	14	745	726	14%	14%	21%	50%	0%	50%	24%
White	12	752	732	8%	8%	25%	58%	0%	58%	29%
African American	-	-	715	-	-	-	-	-	-	14%
Hispanic	-	-	721	-	-	-	-	-	-	19%
American Indian	-	-	722	-	-	-	-	-	-	15%
Asian	-	-	744	-	-	-	-	-	-	46%
Two or More Races	-	-	724	-	-	-	-	-	-	24%
Students with Disability	-	-	705	-	-	-	-	-	-	9%
English Language Learners	-	-	706	-	-	-	-	-	-	10%
Economically Disadvantaged Students	-	-	719	-	-	-	-	-	-	17%

2015 National Assessment Educational Progress (NAEP)

The National Assessment of Educational Progress (NAEP) is the largest national assessment of what our nation's students know and can do. NAEP assesses fourth-, eighth-, and twelfth-grade students in subjects such as reading, mathematics, science, and writing. The reporting of NAEP scores on state report cards is a federal mandate. The results of NAEP are also published as the Nation's Report Card, and are available for the nation, states, and, in some cases, urban districts. The NAEP scores on the report card include grades four and eight 2015 reading and math scores for New Jersey which are the last scores published.

For subgroup outcomes, visit:

Reading Grade 4 <http://www.nj.gov/education/pr/1415/naep/naep4read.html>
 Reading Grade 8 <http://www.nj.gov/education/pr/1415/naep/naep8read.html>
 Math Grade 4 <http://www.nj.gov/education/pr/1415/naep/naep4math.html>
 Math Grade 8 <http://www.nj.gov/education/pr/1415/naep/naep8math.html>

For more information, visit <http://nces.ed.gov/nationsreportcard/>

Proficiency Percentages

Subject	Grade	State/Nation	Below Basic	Basic	Proficient	Advanced
Reading	Grade 4	State (NJ)	25	33	31	12
	Grade 4	Nation	31	33	27	9
	Grade 8	State (NJ)	20	39	35	6
	Grade 8	Nation	24	42	31	4
Math	Grade 4	State (NJ)	14	39	38	9
	Grade 4	Nation	18	42	33	7
	Grade 8	State (NJ)	21	32	30	16
	Grade 8	Nation	29	38	25	8

ACADEMIC ACHIEVEMENT

UNION

WINFIELD TWP

GRADE SPAN PK-08

39-5810-060

WINFIELD TOWNSHIP

7 1/2 GULFSTREAM AVENUE

WINFIELD, NJ 07036

NJASK Results - Science Grade Level - 04

This table presents the grade level proficiency results, as measured by NJASK, in Advanced Proficient, Proficient, and Partially Proficient categories for all appropriate subgroups.

Subgroups	Advanced Proficient	Proficient	Partially Proficient
Schoolwide	-	-	-
White	-	-	-
African American	-	-	-
Hispanic	-	-	-
American Indian	-	-	-
Asian	-	-	-
Two or More Races	-	-	-
Students with Disability	-	-	-
English Language Learners	-	-	-
Economically Disadvantaged Students	-	-	-

Data is presented for subgroups when the count is high enough under ESEA Waiver suppression rules.

NJASK Proficiency Trends - Science - Grade Level - 04

This graph presents the grade level outcomes in the categories of Advanced Proficient, Proficient, and Partially Proficient over the last four years.

Data is suppressed to protect the confidentiality of the students.

ACADEMIC ACHIEVEMENT

UNION

WINFIELD TWP

GRADE SPAN PK-08

39-5810-060

WINFIELD TOWNSHIP

7 1/2 GULFSTREAM AVENUE

WINFIELD, NJ 07036

NJASK Results - Science Grade Level - 08

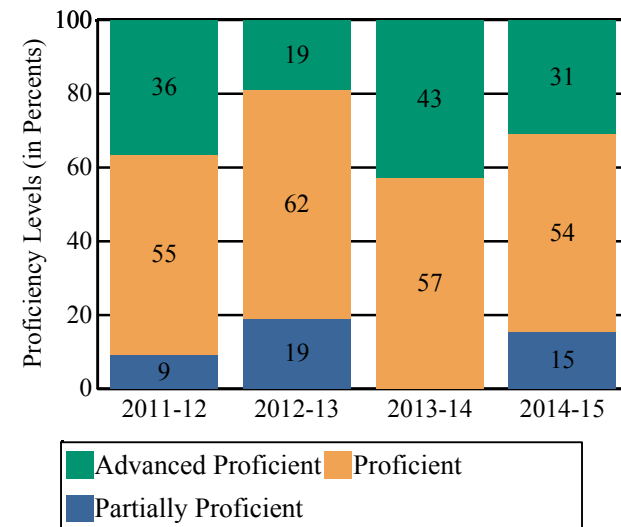
This table presents the grade level proficiency results, as measured by NJASK, in Advanced Proficient, Proficient, and Partially Proficient categories for all appropriate subgroups.

Subgroups	Advanced Proficient	Proficient	Partially Proficient
Schoolwide	31%	54%	15%
White	36%	55%	9%
African American	-	-	-
Hispanic	-	-	-
American Indian	-	-	-
Asian	-	-	-
Two or More Races	-	-	-
Students with Disability	-	-	-
English Language Learners	-	-	-
Economically Disadvantaged Students	-	-	-

Data is presented for subgroups when the count is high enough under ESEA Waiver suppression rules.

NJASK Proficiency Trends - Science - Grade Level - 08

This graph presents the grade level outcomes in the categories of Advanced Proficient, Proficient, and Partially Proficient over the last four years.



COLLEGE AND CAREER READINESS

UNION
WINFIELD TWP

GRADE SPAN PK-08

39-5810-060
WINFIELD TOWNSHIP
7 1/2 GULFSTREAM AVENUE
WINFIELD, NJ 07036

Students in both elementary and middle schools begin to demonstrate college readiness behaviors long before they even enter high school. Among the behaviors that research has shown to be indicative of successfully graduating high school is regularly attending school. For all elementary and middle schools, this includes the percentage of students that are chronically absent each year, defined as missing more than 10% of possible school days. Also presented is the percentage of students participating in Visual and Performing Arts coursework and Algebra I course outcomes.

Algebra I Course Enrollment

This table presents the count of students in this school who were reported in the Algebra I course code in NJSMART and the count of students who took the Algebra I test of PARCC.

Algebra I Enrollment Count	Algebra I PARCC Test Count
-	0

Algebra I Test Taking

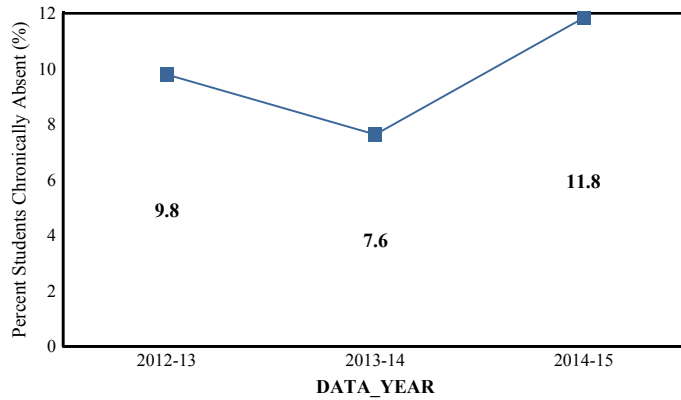
This table presents the percentage of students, as reported in NJSMART, who earned a C or higher in their Algebra I course and the percentage of students who met or exceeded expectation on the Algebra I test of PARCC.

Algebra I Percent C or Better	Algebra I PARCC Percent Met or Exceeded Expectation
-	0.0%

- Data Suppressed to protect the confidentiality of students

Chronic Absenteeism Trend

This graph presents the percentage of the enrolled students who were chronically absent for the past three years.

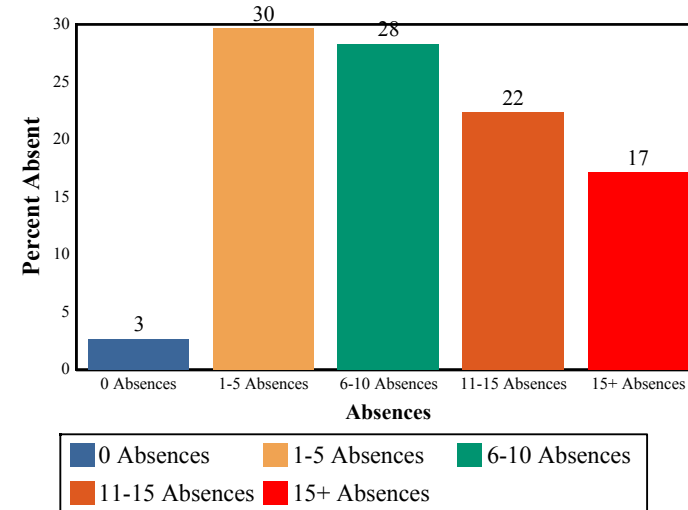


Chronic Absenteeism for 2014-15

11.84%

Absenteeism

The chart below presents the percentage of students who were absent in each category of absence: 0 absences, 1 - 5 absences, 6 - 10 absences, 11 - 15 absences, and more than 15 absences. An absence is defined as being 'not present' and includes the days missed regardless of whether they were determined to be excused or unexcused by the school.



Visual and Performing Arts

The chart below contains the percentage of students who were enrolled in at least one Dance, Drama/Theater, Music or Visual Arts class in this school. The last row shows the percentage of students who were enrolled in any Visual and Performing Arts classes in the school.

Percent of Students Enrolled	School	State
Dance	N/R	1.6%
Drama/Theater	N/R	3.9%
Music	100.0%	66.0%
Visual Arts	100.0%	71.1%
Total: All Visual and Performing Arts	100.0%	89.8%

N/R - Data Not Reported

STUDENT GROWTH

UNION

WINFIELD TWP

GRADE SPAN PK-08

WINFIELD TOWNSHIP
7 1/2 GULFSTREAM AVENUE
WINFIELD, NJ 07036

This section of the performance report presents data about student growth, utilizing the Student Growth Percentile Methodology (SGP). SGP creates a measure of how students progressed in grades 4 through 8 in Language Arts Literacy and in grades 4 through 7 in Math when compared to other students with a similar test score history. A short video explaining the methodology can be found here: <http://www.state.nj.us/education/njsmart/performance/>

The below chart consist of five columns with measures. The first column - Schoolwide Performance - presents the schoolwide median growth score in either English Language Arts/Literacy or Mathematics for all students in the school. The second column - Peer Percentile - indicates how the school's growth performance compares to its group of peer schools. The third column - Statewide Percentile - indicates how a school compares to schools across the state. The last column - Met Target? - indicates whether the school's performance met or exceeded the statewide target, which was set to 35.

The fourth row presents the averages of the peer school percentiles, the averages of statewide percentiles, the percentage of statewide targets met.

Student Growth Indicators	Schoolwide Performance	Peer Percentile	Statewide Percentile	Statewide Target	Met Target?
Student Growth on Language Arts	41	39	25	35	YES
Student Growth on Math	29	20	6	35	NO
		30	16		50%

Student Growth

This table presents for all students with growth scores the interaction between their performance on PARCC and their growth scores. For example, in the top left cell the percentage of students who are both in Level 1 - Did not yet meet expectations AND also demonstrating low growth is displayed.

Language Arts

(Expectations)	GROWTH		
	Low	Typical	High
Did Not Yet Meet	12%	0%	0%
Partially Met	11%	2%	0%
Approached	14%	11%	5%
Met	8%	15%	20%
Exceeded	2%	3%	0%

Math

(Expectations)	GROWTH		
	Low	Typical	High
Did Not Yet Meet	3%	5%	0%
Partially Met	21%	3%	8%
Approached	20%	5%	9%
Met	9%	9%	8%
Exceeded	0%	0%	2%

Low Growth is defined as an Student Growth Percentile score less than 35.

Typical Growth is defined as an Student Growth Percentile score between 35 and 65.

High Growth is defined as a Student Growth Percentile score higher than 65.

WITHIN SCHOOL ACHIEVEMENT GAP

UNION

GRADE SPAN PK-08

WINFIELD TOWNSHIP
7 1/2 GULFSTREAM AVENUE
WINFIELD, NJ 07036

WINFIELD TWP

This section of the performance report presents data about the achievement gap that exists within a school - as measured by the difference between the students' scale scores at the 25th and 75th percentile in the school, the Interquartile Range (IQR). Taken together with an understanding of the overall and average achievement levels in the school, the IQR furthers an understanding of the range of student outcomes that exist in a school. A school gap smaller than the state gap indicates that the school's range of student outcomes is narrower than the state's while a school gap larger than the state gap indicates that the school's range of student outcomes is broader than the state's.

Grade Level - 03

PARCC Language Arts 25th %ile vs 75th%ile

This table presents the scale scores associated with students at the bottom (0th percentile), the 25th percentile, the 50th percentile, the 75th percentile and the top (99th percentile) of school's distribution.

Percentile	School Scale Score	State Scale Score
99th	797	850
75th	755	770
50th	739	743
25th	718	715
0th	650	650

Scale Score Gap - School	Scale Score Gap - State
-----------------------------	----------------------------

25th vs 75th Gap	37	55
------------------	----	----

Grade Level - 03

PARCC MATH 25th %ile vs 75th%ile

This table presents the scale scores associated with students at the bottom (0th percentile), the 25th percentile, the 50th percentile, the 75th percentile and the top (99th percentile) of school's distribution.

Percentile	School Scale Score	State Scale Score
99th	784	850
75th	753	767
50th	743	745
25th	719	722
0th	689	650

Scale Score Gap - School	Scale Score Gap - State
-----------------------------	----------------------------

25th vs 75th Gap	34	45
------------------	----	----

WITHIN SCHOOL ACHIEVEMENT GAP

UNION

WINFIELD TWP

GRADE SPAN PK-08

39-5810-060

WINFIELD TOWNSHIP

7 1/2 GULFSTREAM AVENUE

WINFIELD, NJ 07036

Grade Level - 05

PARCC Language Arts 25th %ile vs 75th%ile

This table presents the scale scores associated with students at the bottom (0th percentile), the 25th percentile, the 50th percentile, the 75th percentile and the top (99th percentile) of school's distribution.

Percentile	School Scale Score	State Scale Score
99th	786	850
75th	766	773
50th	757	751
25th	732	728
0th	698	650

	Scale Score Gap - School	Scale Score Gap - State
--	-----------------------------	----------------------------

25th vs 75th Gap	34	45
------------------	----	----

Grade Level - 06

PARCC Language Arts 25th %ile vs 75th%ile

This table presents the scale scores associated with students at the bottom (0th percentile), the 25th percentile, the 50th percentile, the 75th percentile and the top (99th percentile) of school's distribution.

Percentile	School Scale Score	State Scale Score
99th	782	850
75th	778	770
50th	753	749
25th	743	726
0th	726	650

	Scale Score Gap - School	Scale Score Gap - State
--	-----------------------------	----------------------------

25th vs 75th Gap	35	44
------------------	----	----

Grade Level - 05

PARCC MATH 25th %ile vs 75th%ile

This table presents the scale scores associated with students at the bottom (0th percentile), the 25th percentile, the 50th percentile, the 75th percentile and the top (99th percentile) of school's distribution.

Percentile	School Scale Score	State Scale Score
99th	774	850
75th	738	763
50th	731	743
25th	725	723
0th	695	650

	Scale Score Gap - School	Scale Score Gap - State
--	-----------------------------	----------------------------

25th vs 75th Gap	13	40
------------------	----	----

Grade Level - 06

PARCC MATH 25th %ile vs 75th%ile

This table presents the scale scores associated with students at the bottom (0th percentile), the 25th percentile, the 50th percentile, the 75th percentile and the top (99th percentile) of school's distribution.

Percentile	School Scale Score	State Scale Score
99th	789	850
75th	747	763
50th	741	742
25th	723	721
0th	700	650

	Scale Score Gap - School	Scale Score Gap - State
--	-----------------------------	----------------------------

25th vs 75th Gap	24	42
------------------	----	----

WITHIN SCHOOL ACHIEVEMENT GAP

UNION
WINFIELD TWP

GRADE SPAN PK-08

39-5810-060
WINFIELD TOWNSHIP
7 1/2 GULFSTREAM AVENUE
WINFIELD, NJ 07036

Grade Level - 07

PARCC Language Arts 25th %ile vs 75th%ile

This table presents the scale scores associated with students at the bottom (0th percentile), the 25th percentile, the 50th percentile, the 75th percentile and the top (99th percentile) of school's distribution.

Percentile	School Scale Score	State Scale Score
99th	806	850
75th	751	776
50th	725	751
25th	710	724
0th	687	650

	Scale Score Gap - School	Scale Score Gap - State
25th vs 75th Gap	41	52

Grade Level - 08

PARCC Language Arts 25th %ile vs 75th%ile

This table presents the scale scores associated with students at the bottom (0th percentile), the 25th percentile, the 50th percentile, the 75th percentile and the top (99th percentile) of school's distribution.

Percentile	School Scale Score	State Scale Score
99th	805	850
75th	785	777
50th	750	751
25th	737	723
0th	691	650

	Scale Score Gap - School	Scale Score Gap - State
25th vs 75th Gap	48	54

Grade Level - 07

PARCC MATH 25th %ile vs 75th%ile

This table presents the scale scores associated with students at the bottom (0th percentile), the 25th percentile, the 50th percentile, the 75th percentile and the top (99th percentile) of school's distribution.

Percentile	School Scale Score	State Scale Score
99th	774	850
75th	744	759
50th	723	740
25th	711	720
0th	692	650

	Scale Score Gap - School	Scale Score Gap - State
25th vs 75th Gap	33	39

Grade Level - 08

PARCC MATH 25th %ile vs 75th%ile

This table presents the scale scores associated with students at the bottom (0th percentile), the 25th percentile, the 50th percentile, the 75th percentile and the top (99th percentile) of school's distribution.

Percentile	School Scale Score	State Scale Score
99th	795	850
75th	766	748
50th	746	726
25th	722	704
0th	698	650

	Scale Score Gap - School	Scale Score Gap - State
25th vs 75th Gap	44	44

SCHOOL CLIMATE

UNION

WINFIELD TWP

State of New Jersey

2014-15

GRADE SPAN PK-08

39-5810-060

WINFIELD TOWNSHIP

7 1/2 GULFSTREAM AVENUE

WINFIELD, NJ 07036

Length of School Day

This table presents the amount of time a school is in session for a typical student on a normal school day.

	School
2014-15	6 Hrs. 30 Mins.

Student Suspension Rate

This table presents the percentage of students who were suspended one or more times during the school year.

	School
2014-15	1.3%

Instructional Time

This table presents the amount of time that a typical student is engaged in instructional activities under the supervision of a certified teacher.

2014-15	School
Full Time	5 Hrs. 24 Mins.
Shared Time	0 Hrs. 0 Mins.

Student Expulsions

This table presents the number of students who were expelled from the school and district during the school year.

	School
2014-15	0

Student to Staff Ratio

This table presents the count of students per faculty member or administrator in the school. All staff are counted in full-time equivalents.

2014-15	School
Faculty	10
Administrators	102

SCHOOL PEER GROUP

**UNION
WINFIELD TWP**

GRADE SPAN PK-08

**39-5810-060
WINFIELD TOWNSHIP
7 1/2 GULFSTREAM AVENUE
WINFIELD, NJ 07036**

This table presents the list of peer schools in alphabetical order by county name that was created specifically for this school (highlighted in yellow). Peer schools are drawn from across the state and represent schools that have similar grade configurations and that are educating students of similar demographic characteristics, as measured by enrollment in Free/Reduced Lunch Programs, Limited English Proficiency or Special Education Programs.

<u>COUNTY NAME</u>	<u>DISTRICT NAME</u>	<u>SCHOOL NAME</u>	<u>CDS CODE</u>	<u>GRADES PAN</u>	<u>ECONOMICALLY DISADVANTAGED</u>	<u>ENGLISH LANGUAGE LEARNERS</u>	<u>SPECIAL EDUCATION</u>
BURLINGTON	EVESHAM TWP	FRANCES DEMASI MIDDLE SCHOOL	05-1420-040	06-08	11.2%	0.1%	17.5%
BURLINGTON	EVESHAM TWP	MARLTON MIDDLE	05-1420-060	06-08	14.8%	0.1%	22.5%
BURLINGTON	NORTHERN BURLINGTON REG	NORTHERN BURLINGTON COUNTY REGIONAL MIDDLE SCHOOL	05-3690-060	07-08	15.8%	0%	18.6%
BURLINGTON	SHAMONG TWP	INDIAN MILLS MEMORIAL SCHOOL	05-4740-055	05-08	10.8%	0%	16.1%
BURLINGTON	SOUTHAMPTON TWP	SOUTHAMPTON TOWNSHIP SCHOOL #3	05-4930-070	06-08	12.3%	0.4%	17.5%
BURLINGTON	TABERNACLE TWP	KENNETH R. OLSON MIDDLE SCHOOL	05-5130-040	05-08	12.5%	0%	16.6%
BURLINGTON	WOODLAND TWP	CHATSWORTH ELEMENTARY SCHOOL	05-5890-030	PK-08	19.1%	0%	19.2%
CAMDEN	CHERRY HILL TWP	HENRY C. BECK MIDDLE SCHOOL	07-0800-073	06-08	14.5%	0.8%	20%
CAMDEN	CHERRY HILL TWP	ROSA INTERNATIONAL MIDDLE SCHOOL	07-0800-074	06-08	14%	0%	16%
CAMDEN	HADDON TWP	WILLIAM G. ROHRER MIDDLE SCHOOL	07-1890-110	06-08	18.4%	0%	21.3%
CAPE MAY	DENNIS TWP	DENNIS TWP ELEMENTARY/MIDDLE SCHOOL	09-1080-050	04-08	26.2%	0%	21.1%
CHARTERS	SUSSEX COUNTY CS FOR TECHNOLOGY	SUSSEX COUNTY CHARTER SCHOOL FOR TECHNOLOGY	80-7850-960	06-08	20%	0%	24%
ESSEX	MONTCLAIR TOWN	RENAISSANCE MIDDLE SCHOOL AT THE RAND BUILDING	13-3310-165	06-08	13.8%	0%	21.7%
GLOUCESTER	PITMAN BORO	PITMAN MIDDLE SCHOOL	15-4140-075	06-08	10.7%	0%	19.5%
HUNTERDON	FRENCHTOWN BORO	FRENCHTOWN ELEMENTARY	19-1680-050	PK-08	14.7%	0%	17.2%
HUNTERDON	HIGH BRIDGE BORO	HIGH BRIDGE MIDDLE SCHOOL	19-2140-055	05-08	17.1%	0%	23%
MONMOUTH	FREEHOLD TWP	DWIGHT D. EISENHOWER SCHOOL	25-1660-024	06-08	10.5%	0%	15.3%
MONMOUTH	HOWELL TWP	HOWELL TOWNSHIP MEMORIAL MIDDLE SCHOOL	25-2290-045	06-08	11.6%	0%	17.6%
MORRIS	BUTLER BORO	RICHARD BUTLER SCHOOL	27-0630-030	05-08	19.7%	1%	24%
MORRIS	JEFFERSON TWP	JEFFERSON TOWNSHIP MIDDLE SCHOOL	27-2380-045	06-08	13.5%	0%	16.3%
OCEAN	LACEY TWP	LACEY TOWNSHIO MIDDLE SCHOOL	29-2480-053	07-08	28.2%	0.3%	25.3%

SCHOOL PEER GROUP

UNION

WINFIELD TWP

GRADE SPAN PK-08

39-5810-060
WINFIELD TOWNSHIP
7 1/2 GULFSTREAM AVENUE
WINFIELD, NJ 07036

OCEAN	SOUTHERN REGIONAL	SOUTHERN REGIONAL MIDDLE SCHOOL	29-4950-060	07-08	24.8%	0.3%	23%
PASSAIC	RINGWOOD BORO	MARTIN J. RYERSON SCHOOL	31-4400-053	06-08	12.1%	0.2%	18.5%
PASSAIC	WEST MILFORD TWP	MACOPIN MIDDLE SCHOOL	31-5650-055	07-08	14.2%	0.5%	23.3%
SUSSEX	HAMBURG BORO	HAMBURG SCHOOL	37-1930-060	PK-08	23.7%	0%	21.4%
SUSSEX	HOPATCONG	HOPATCONG MIDDLE SCHOOL	37-2240-040	06-08	29.8%	0%	25.6%
SUSSEX	SUSSEX-WANTAGE REGIONAL	SUSSEX MIDDLE SCHOOL	37-5100-060	06-08	22.8%	0%	22.8%
SUSSEX	VERNON TWP	GLEN MEADOW MIDDLE SCHOOL	37-5360-025	07-08	18.6%	0%	18.4%
UNION	WINFIELD TWP	WINFIELD TOWNSHIP	39-5810-060	PK-08	16.3%	0%	18.8%
WARREN	BELVIDERE TOWN	OXFORD STREET ELEMENTARY SCHOOL	41-0280-030	04-08	17.3%	0%	19.4%
WARREN	WHITE TWP	WHITE TOWNSHIP CONSOLIDATED SCHOOL	41-5780-050	PK-08	19%	0%	18.2%