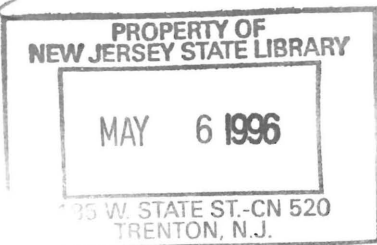


75

974.905
044.4
C.1



DEPARTMENT OF HUMAN SERVICES

INTER-OFFICE COMMUNICATION

DATE April 25, 1996

TO William Waldman
Commissioner

FROM Karen Highsmith
Acting Director

SUBJECT CURRENT PROGRAM STATISTICS

Attached please find CURRENT PROGRAM STATISTICS, including the FDP Statistical Summary for February 1996. Also included are explanatory notes for the various data elements.

Should you have any questions, please feel free to call me.

KH:kas:c

Attachments

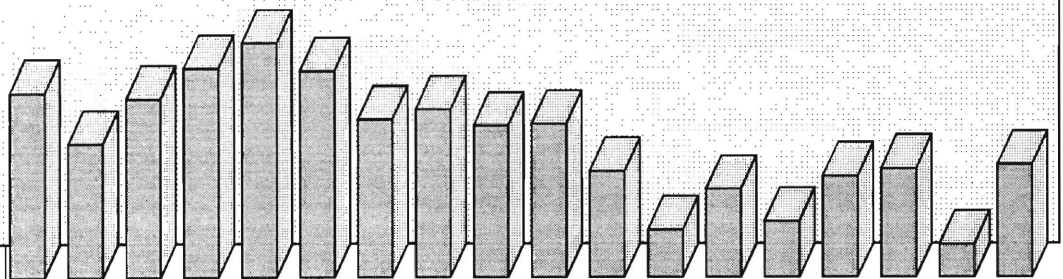
- c Guhl
- Grant
- Tencza

*State of New Jersey
Department of Human Services
Division of Family Development*

CURRENT PROGRAM STATISTICS

February 1996

Karen Highsmith, Acting Director



State of New Jersey
 Department of Human Services
 Division of Family Development

CURRENT PROGRAM STATISTICS
 February 1996

TABLE OF CONTENTS

	Page
Highlights of Current Program Statistics	1-3
 Statistics by County, February 1996	
Table 1 AFDC	4
Graph 1 Current AFDC Families.....	5
Table 2 Food Stamp Program.....	6
Graph 2 Current Food Stamp Households/Persons	7
Table 3 Emergency Assistance Program	8
Graph 3 Current Families Receiving Emergency Assistance	9
Table 4 Family Development Program	10
 State Summary, 1994 - 1996	
Table 5 AFDC, February 1994 - February 1996	12
Graph 4 Families Receiving AFDC, 2/94 - 2/96	12
Table 6 Food Stamp Program, February 1994 - February 1996	13
Graph 5 Food Stamp Households, 2/94 - 2/96	14
Graph 6 Food Stamp Recipients, 2/94 - 2/96	15
Table 7 Emergency Assistance Program, February 1994 - February 1996	16
Graph 7 AFDC Families Receiving Emergency Assistance 2/94 - 2/96	17
Table 8 JOBS/FDP Participation Rates, by County and Statewide, February 1994 - February 1996	18
Graph 8 JOBS/FDP Participation Rates, 2/94 - 2/96	19
Table 9 General Assistance, August 1993 - August 1995	20
Graph 9 General Assistance Recipients 8/93 -8/95	21
Table 10 Child Support and Paternity, Fiscal Years 1994-1996	22
Explanatory Notes.....	23-24
 Supplement	
Table 11 General Assistance Recipients by County and Municipality, August 1995	25

Highlights of Current Program Statistics

AFDC (Tables 1 and 5, Graphs 1 and 4)

115,000 eligible families in New Jersey were receiving AFDC as of the end of February 1996:

- Less than **103,600** single head of household families (Regular AFDC, C segment).
- Among two-parent families, about the same number, under **3200**, of Unemployed Parent families (F Segment) and State AFDC families (N Segment).
- About **5100** Medicaid Only families.
- The largest numbers of families by county: Essex with **29,300**, Hudson with **18,200**, and Camden County with **13,200**. (53 percent of all AFDC families)
- Other counties ranged from under **200** families in Hunterdon to **7,400** in Passaic County.

There were about 900 fewer eligible families in February than in January 1996, with a total decline of nearly 10,000 since the May/June 1994 peak of 124,600.

- There were **900** fewer C segment families in February than in January 1996, and **8200** less than the peak of **111,800** in June 1994.
- F segment families declined from over **4500** in May 1994 to less than **3200** by November 1995, with almost no change since then.
- State AFDC (N segment) also peaked at almost **3500** in May 1994, but slowly declined by about **300** since then.
- Medicaid Only families remained at or below **5000** in 1994, but averaged nearly **5200** for 1995. In February 1996 they were down to less than **5100**.

FOOD STAMP PROGRAM (Tables 2 and 6, Graphs 2, 5, and 6)

At the end of February 1996, almost 222,500 households were participating in the Food Stamp Program:

- **109,700** AFDC households with **343,300** persons.
- **112,800** Other Low Income households with **171,900** persons.
- **48 percent** were in Essex (**55,100**), Hudson (**30,000**) and Camden (**21,600**) Counties.
- Food Stamp households included about **515,000** persons, **247,000** adults and **268,000** children.
- There are now **eight counties**, with the addition of **Atlantic** to the previous seven (Bergen, Hunterdon, Monmouth, Morris, Somerset, Sussex, and Warren) where the number of adults exceed the number of children in Food Stamp households.

Food Stamp households in New Jersey remained close to 215,000 families between August 1993 and February 1994, and jumped to about 222,000 families in March 1994. The number has remained between 220,000 and 223,000 since then, except for a peak in March 1995 of almost 225,000.

- The number of Other Low Income households now exceeds the number of AFDC(FS) households by **almost 3200**, after first surpassing the latter in November 1995. There were **10,000** more Other Low Income households in February 1996 than two years earlier. AFDC(FS) households declined from nearly **116,000** in May 1994 to less than **110,000** by December 1995.
- Total Recipients peaked at almost **531,000** in March 1994, and then again at **529,500** in March 1995. After falling below **512,000** in December 1995 the level increased almost **3500** by February 1996 to more than **515,000**.
- The number of Recipient Adults averaged about **246,000** in both 1994 and 1995. The increase to nearly **247,000** in February 1996 was the highest level since April 1995.
- The number of Recipient Children which peaked at almost **283,000** in March 1994 and almost **280,000** in March 1995, has since declined, but has remained around **268,000** from December 1995 through February 1996.

EMERGENCY ASSISTANCE (Tables 3 and 7, Graphs 3 and 7)

In February 1996 4,490 eligible AFDC families received Emergency Assistance (EA) payments in New Jersey:

- **1788** families with Temporary Rental Assistance (TRA)
- **305** motel placements
- **330** emergency shelter placements
- All other AFDC-EA accounted for **2,067** families, including back rent, back utilities, security deposits, furnishings, clothing and food allowance, or transitional housing.
- **1163** AFDC families in Essex County received EA, with **719** in Middlesex, and **442** in Passaic. All other counties had between **12** and **390**, with ten counties **under 100**.

In the past two years the highest numbers of AFDC families receiving EA were in March and May of 1994, each with close to 8000. The number has declined since, and dropped below 5000 in January 1996.

- The number of families provided TRA each month has declined steadily from about **3600** in early 1994, and has been below **2000** since September 1995.
- Emergency Shelter and Motel Housing have each been provided to **under 500** families each month, except for three months in 1994 and one in 1995 when Motel Housing **exceeded 500**.
- An average of **3300** families received Other EA in 1994 and **2800** in 1995. The number dropped to **2200** in January 1996 and less than **2100** in February.

JOBS/FDP PARTICIPATION RATES (Table 8, Graph 8)

The Statewide JOBS/FDP participation rate of **23.5 percent** in February 1996 was the fourth month of decline since a high of almost **28 percent** in October 1995. Nevertheless, February 1996 was more than three percent higher than the February 1995 rate of **20.4**. Two years ago the rate was only **16 percent**. A clear upward shift has been evident over the past two years.

- Since February 1994, many counties have shown upward movement in participation rates. Most counties tend to show small fluctuations, with Cape May, Essex, Hudson, Middlesex, Ocean, and Passaic having clear upward movement. Bergen, Burlington, Camden, Gloucester, Mercer, Monmouth and Union have had minimal increases. Cumberland has had some fluctuations, but maintained very high participation rates overall. Atlantic, Salem, Somerset, Sussex, and Warren also exhibited high rates, but have had wide fluctuations. Hunterdon jumped to higher levels early 1995. Morris increased markedly in 1995 and remains at record levels.
- For February 1996, Camden, Cape May, and Essex and Gloucester remained between **10 and 20 percent**. Hunterdon, Middlesex, and Passaic were between **30 and 40 percent**, while Atlantic, Cumberland, Salem, Somerset, and Warren were between **40 and 60 percent**. Sussex exceeded **60 percent**, while Morris far surpassed all previous levels experienced in any county at **almost 86 percent**. Nine counties were between **20 and 30 percent**. Though the statewide rate declined from January to February 1996, participation rates increased in twelve of the State's 21 counties.

GENERAL ASSISTANCE (Table 9, Graph 9)

For the period August 1993 through August 1995 (the latest available information), the number of GA recipients peaked at **38,100** in March 1994. The level stayed around **35,000** from September through December 1994. The number for January through April 1995 remained below **36,000**, then declined each month thereafter to less than **32,400** in July and August 1995.

- The number of employable recipients peaked in March 1994 (**26,400**) and has been declining since then. The level remained slightly over **23,000** from September through December 1994. After increasing to over **24,000** in January 1995, the level resumed declining, and was under **21,600** in June, July and August.
- Unemployable GA recipients have remained within a relatively narrow range. The level remained between **11,000 and 12,300** from August 1993 through July 1995. August 1995 was the first month in the period when Unemployable GA recipients declined to less than **11,000**.

CHILD SUPPORT AND PATERNITY COLLECTIONS (Table 10)

Total collections of the Child Support and Paternity Program grew from about **\$534 million** to more than **\$586 million** from FFY1994 to FFY1995, an increase of almost **10 percent**.

- Total AFDC/Foster Care collections increased from almost **\$92 million** to about **\$97 million**, or **5.3 percent**.
- Non-AFDC collections grew from **\$442 million** to almost **\$490 million**, or **10.7 percent**.

New Jersey Department of Human Services
Division of Family Development

TABLE 1

AFDC Program

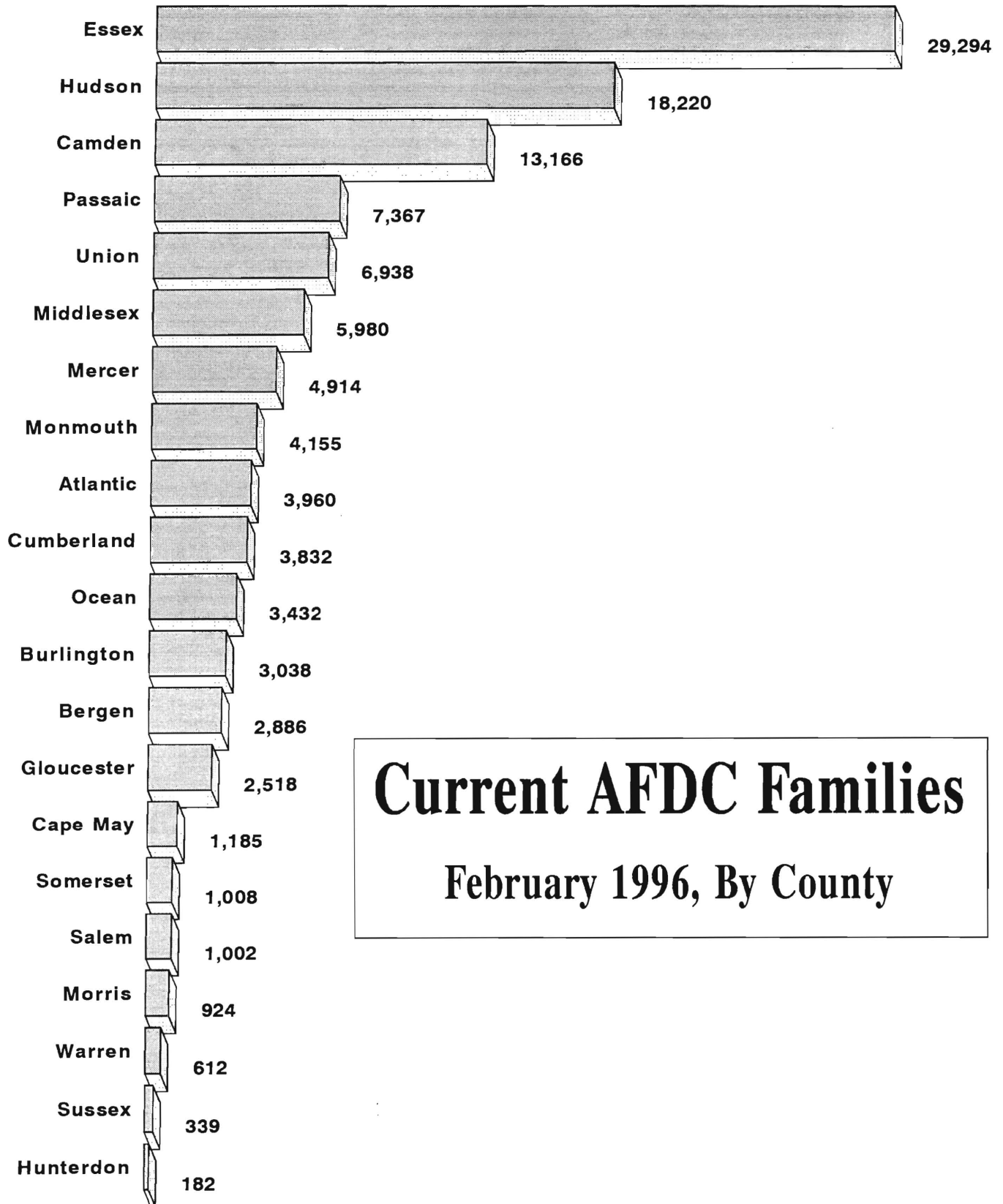
**NUMBER OF APPLICATIONS AND TERMINATIONS DURING REPORT MONTH, AND
NUMBER OF ELIGIBLE FAMILIES RECEIVING AFDC AT END OF REPORT MONTH**

February 1996

County	Applications Approved	Terminations	Regular AFDC (C Segment)	Unemployed Parents (F)	State AFDC (N)	Medicaid Only	TOTAL AFDC
Atlantic	309	306	3,613	132	74	141	3,960
Bergen	129	193	2,537	142	123	84	2,886
Burlington	214	234	2,642	84	85	227	3,038
Camden	627	794	11,516	541	373	736	13,166
Cape May	117	91	954	78	77	76	1,185
Cumberland	256	304	3,228	199	198	207	3,832
Essex	757	990	27,888	429	227	750	29,294
Gloucester	230	283	2,163	118	78	159	2,518
Hudson	436	505	16,354	337	619	910	18,220
Hunterdon	16	11	149	3	9	21	182
Mercer	417	462	4,425	87	90	312	4,914
Middlesex	321	416	5,024	224	282	450	5,980
Monmouth	218	249	3,846	77	178	54	4,155
Morris	51	63	822	28	30	44	924
Ocean	213	266	2,899	163	158	212	3,432
Passaic	324	394	6,764	286	248	69	7,367
Salem	97	94	878	18	29	77	1,002
Somerset	101	150	809	41	34	124	1,008
Sussex	30	47	284	12	6	37	339
Union	315	399	6,257	127	214	340	6,938
Warren	39	32	509	35	38	30	612
NJ TOTAL	5,217	6,283	103,561	3,161	3,170	5,060	114,952

Data Sources: Data is derived from NJ Division of Family Development's FAMIS report # FF-012.

GRAPH 1



New Jersey Department of Human Services
Division of Family Development

TABLE 2

FOOD STAMP Program

**NUMBER OF ATP'S ISSUED TO HOUSEHOLDS, PERSONS, ADULTS
AND CHILDREN AT THE END OF THE REPORT MONTH**

February 1996

County	HOUSEHOLDS			TOTAL	TOTAL	PERSONS		
	AFDC	Other low income	TOTAL			AFDC	Other low income	Adults
Atlantic	3,818	4,988	8,806	19,072	12,213	6,859	9,548	9,524
Bergen	2,700	5,597	8,297	16,609	8,032	8,577	9,685	6,924
Burlington	2,718	3,060	5,778	13,227	8,226	5,001	6,545	6,682
Camden	12,565	9,082	21,647	54,194	41,038	13,156	24,439	29,755
Cape May	1,228	1,410	2,638	6,561	4,091	2,470	3,227	3,334
Cumberland	3,780	2,837	6,617	17,276	12,669	4,607	7,900	9,376
Essex	28,676	26,447	55,123	126,517	88,743	37,774	59,012	67,505
Gloucester	2,397	2,002	4,399	10,783	7,392	3,391	5,116	5,667
Hudson	17,305	12,712	30,017	72,164	52,490	19,674	32,730	39,434
Hunterdon	134	378	512	1,036	410	626	592	444
Mercer	4,645	4,570	9,215	20,136	14,191	5,945	9,549	10,587
Middlesex	5,493	6,045	11,538	25,860	16,510	9,350	12,890	12,970
Monmouth	3,985	6,377	10,362	22,428	12,642	9,786	11,630	10,798
Morris	831	1,919	2,750	5,503	2,446	3,057	3,196	2,307
Ocean	3,498	4,637	8,135	20,268	11,401	8,867	9,647	10,621
Passaic	7,014	9,495	16,509	38,281	22,996	15,285	18,537	19,744
Salem	953	823	1,776	4,435	3,118	1,317	2,028	2,407
Somerset	998	1,817	2,815	5,548	2,872	2,676	3,030	2,518
Sussex	331	655	986	2,316	1,024	1,292	1,228	1,088
Union	5,978	6,900	12,878	29,113	18,959	10,154	14,412	14,701
Warren	602	1,062	1,664	3,854	1,851	2,003	2,020	1,834
NJ TOTAL	109,649	112,813	222,462	515,181	343,314	171,867	246,961	268,220

ATP - Authorization to Participate, may include some duplication

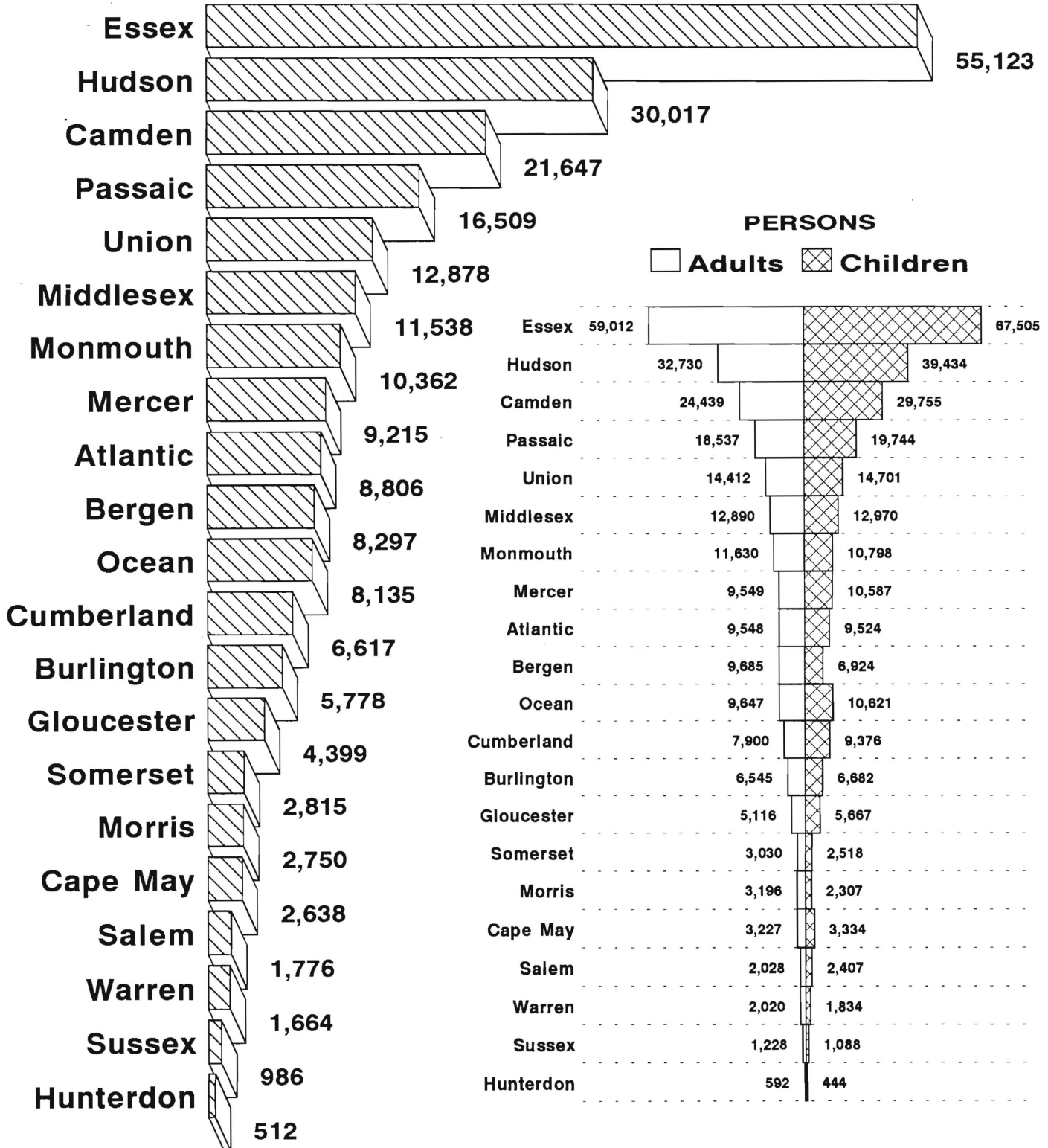
Data Sources: Data is derived from NJ Division of Family Development's FAMIS report # FB-160.

GRAPH 2

Food Stamp Households

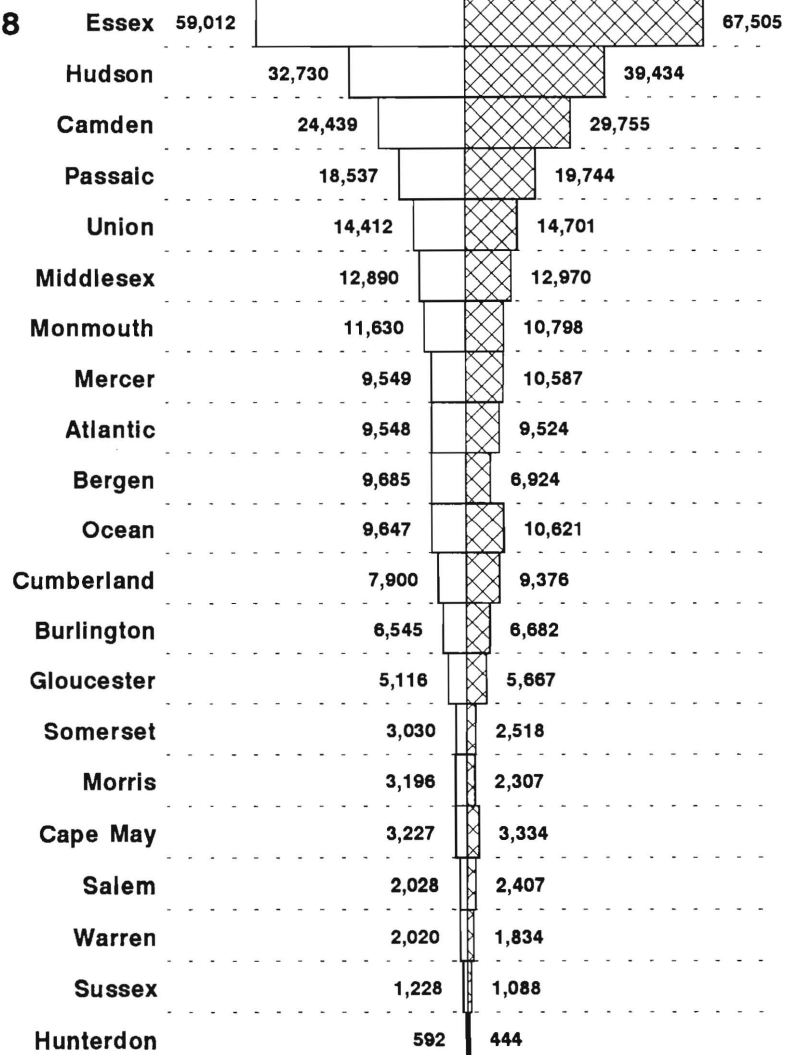
February 1996, By County

 **HOUSEHOLDS**



PERSONS

 **Adults**
  **Children**



New Jersey Department of Human Services
Division of Family Development

TABLE 3

EMERGENCY ASSISTANCE RECIPIENTS

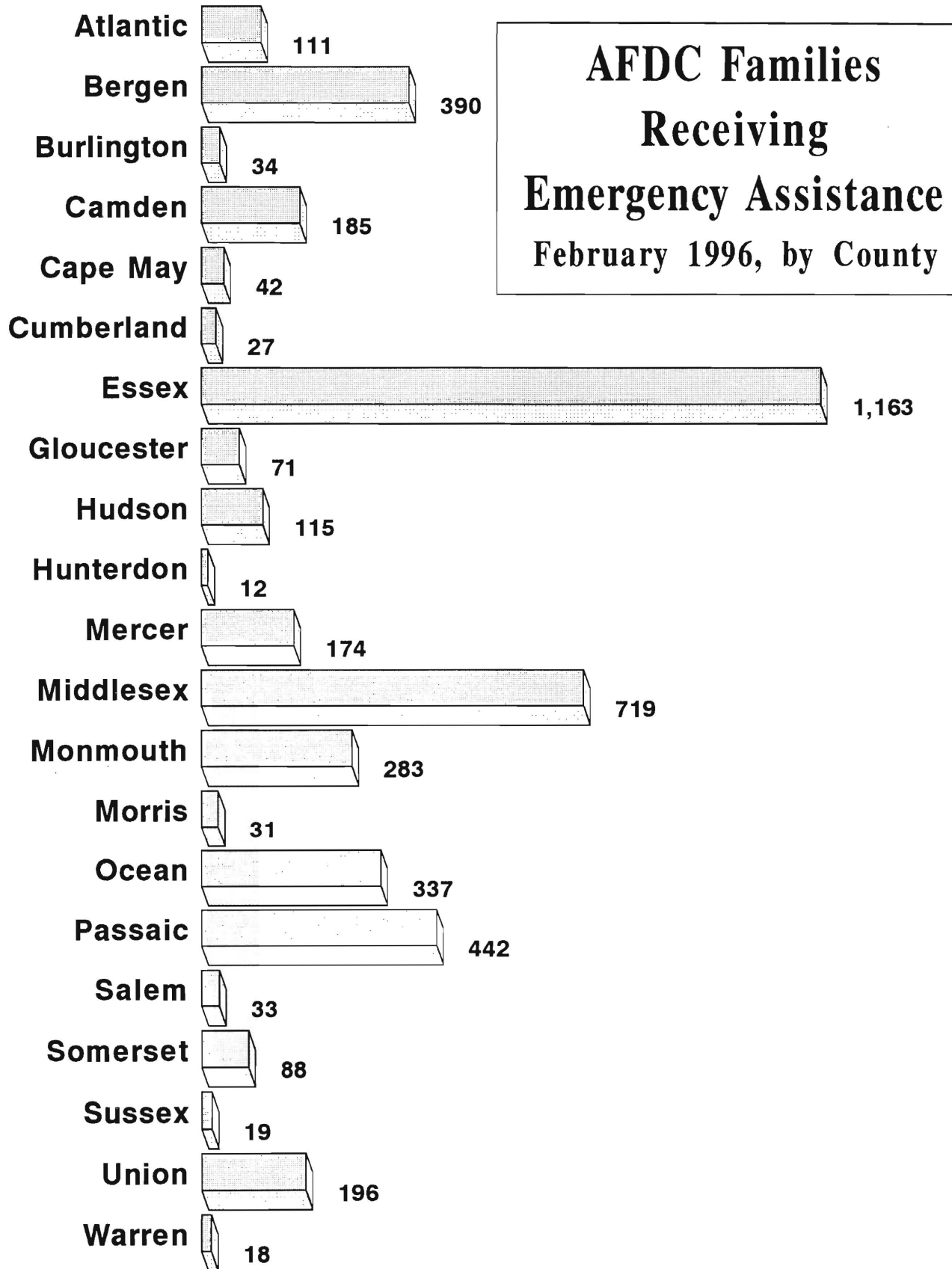
NUMBER OF ELIGIBLE FAMILIES RECEIVING EMERGENCY ASSISTANCE PAYMENTS
(UNDUPLICATED CASES)

February 1996

County	AFDC Families Receiving Emergency Assistance					SSI
	TOTAL AFDC -EA	Temporary Rental Assist	Motel Housing	Emergency Shelter	Other AFDC-EA	Recipients Receiving EA
ATLANTIC	111	42	13	16	40	31
BERGEN	390	209	22	34	125	11
BURLINGTON	34	7	0	19	8	8
CAMDEN	185	66	4	20	95	20
CAPE MAY	42	11	5	1	25	4
CUMBERLAND	27	0	0	10	17	10
ESSEX	1,163	629	10	88	436	34
GLOUCESTER	71	30	3	24	14	9
HUDSON	115	18	8	22	67	10
HUNTERDON	12	3	0	3	6	0
MERCER	174	86	19	4	65	12
MIDDLESEX	719	390	17	13	299	42
MONMOUTH	283	115	61	4	103	20
MORRIS	31	1	2	6	22	12
OCEAN	337	130	79	2	126	74
PASSAIC	442	4	12	19	407	42
SALEM	33	8	11	3	11	7
SOMERSET	88	11	16	2	59	11
SUSSEX	19	2	8	4	5	7
UNION	196	26	7	33	130	18
WARREN	18	0	8	3	7	2
NJ TOTAL	4,490	1,788	305	330	2,067	384

Data Sources: Derived from NJ Division of Family Development FAMIS Reports #FM 457 and #FM 430-03a.

GRAPH 3



NEW JERSEY DEPARTMENT OF HUMAN SERVICES
DIVISION OF FAMILY DEVELOPMENT

TABLE 4
FAMILY DEVELOPMENT PROGRAM
STATISTICAL SUMMARY

COUNTY	SNAPSHOT OF ACTIVITY AS OF FEBRUARY 1996				ACTIVITY FOR MONTH OF FEBRUARY 1996					
	TOTAL NONEXMT JOBS/FDP RECI- PIENTS	EMPLOYMENT DIRECTED ACTIVITIES(1)			PARTIC IN EDAs & REC SUPPORT SERVICES		PARTIC W/ 1st C M INTV	# EMPL THIS MONTH & STILL REC AFDC	# CLSD ON FAMIS RE: EARNGS(2)	POST AFDC & REC CH CARE
		TRAIN- ING	EDUCA- TION	JOB SEARCH	TREs	CHILD CARE				
ATLANTIC	1,638	277	302	141	356	193	165	30	50	179
BERGEN	1,804	200	122	20	207	114	47	21	40	65
BURLINGTON	1,515	300	148	62	373	175	156	48	70	167
CAMDEN	8,346	499	448	55	796	400	104	30	134	225
CAPE MAY	656	80	14	40	62	14	69	12	19	5
CUMBERLAND	1,648	306	285	30	547	267	141	39	58	98
ESSEX	17,501	1,367	1,141	278	1,944	1,269	282	50	155	134
GLOUCESTER	1,213	277	85	15	367	79	116	10	18	60
HUDSON	11,770	917	1,433	67	1,744	773	336	44	150	212
HUNTERDON	92	7	17	4	14	12	5	6	5	8
MERCER	3,042	188	260	42	183	212	63	15	46	113
MIDDLESEX	3,467	524	355	138	472	183	212	58	51	114
MONMOUTH	2,613	316	267	87	480	203	161	39	64	148
MORRIS	474	176	58	108	82	81	70	8	17	37
OCEAN	2,074	272	125	136	146	137	209	46	72	140
PASSAIC	3,947	829	382	42	872	292	217	41	84	124
SALEM	421	96	85	5	120	76	33	10	9	37
SOMERSET	535	59	62	16	76	87	17	17	12	37
SUSSEX	210	47	57	53	51	38	17	8	13	29
UNION	3,977	432	358	111	508	182	182	18	60	111
WARREN	415	45	66	64	23	26	5	8	22	15
STATE	67,358	7,214	6,070	1,514	9,423	4,813	2,607	558	1,149	2,058

(1) - The number of participants receiving support services may occasionally exceed the number actively participating in EDAs. This can result from extended assessment or evaluation activities or, the issuance of bridge payments.

(2) - FAMIS file date 2/17/96

New Jersey Department of Human Services
Division of Family Development

TABLE 5

AFDC Program State Summary

**NUMBER OF APPLICATIONS AND TERMINATIONS DURING REPORT MONTH,
AND NUMBER OF ELIGIBLE FAMILIES RECEIVING AFDC AT END OF REPORT MONTH**

February 1994 through February 1996

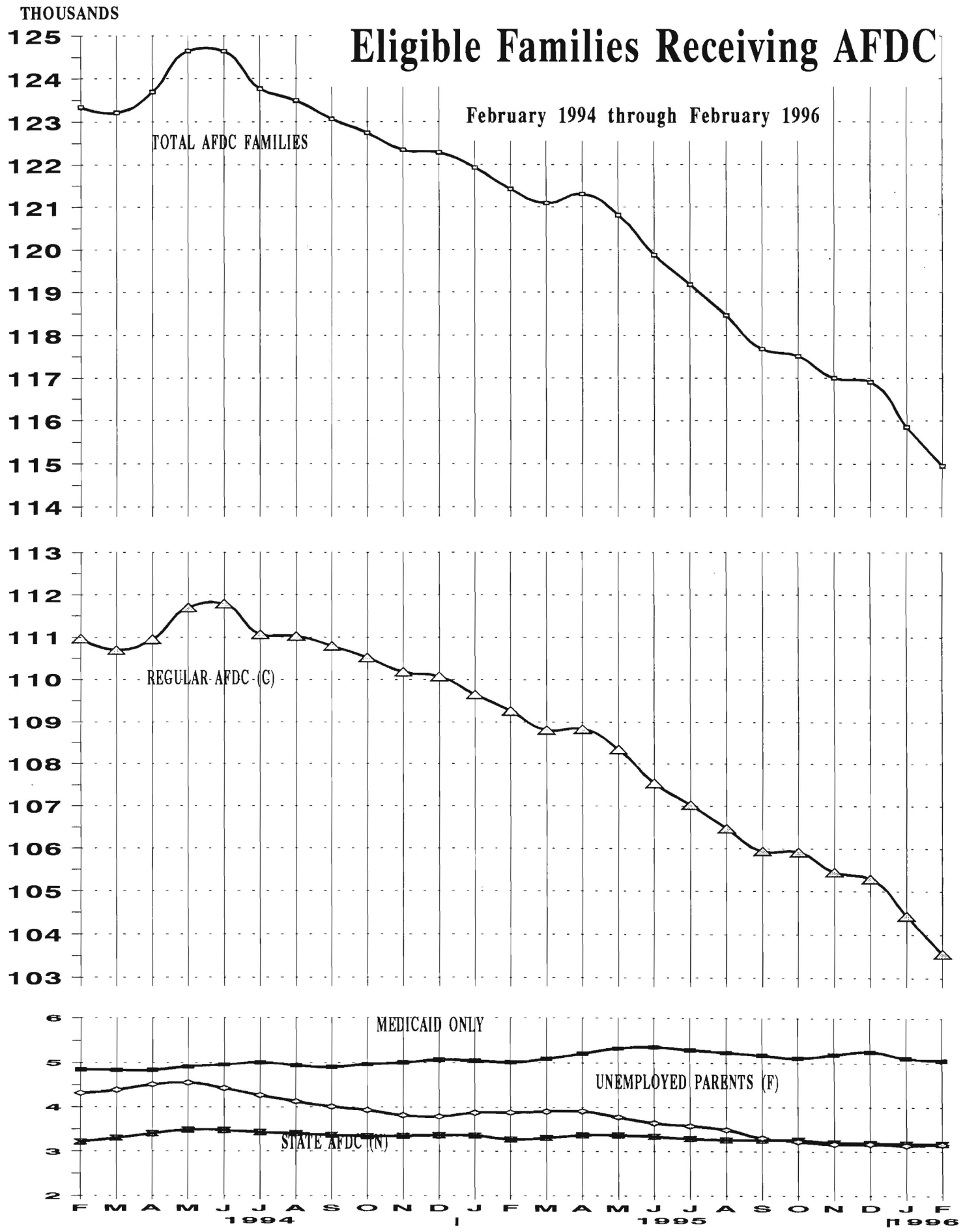
	Applications Approved	Termin- ations	Regular AFDC (C Segment)	Unemployed Parents (F)	State AFDC (N)	Medicaid Only	TOTAL AFDC
1994 Feb	5,449	5,518	110,964	4,314	3,214	4,844	123,336
Mar	5,693	5,893	110,699	4,383	3,301	4,831	123,214
Apr	6,284	5,997	110,951	4,506	3,399	4,834	123,690
May	7,094	6,188	111,700	4,549	3,483	4,913	124,645
Jun	5,758	5,742	111,787	4,423	3,477	4,953	124,640
Jul	5,117	5,898	111,064	4,266	3,428	5,007	123,765
Aug	6,435	6,827	111,025	4,128	3,401	4,940	123,494
Sep	6,266	6,754	110,790	4,007	3,369	4,900	123,066
Oct	6,592	6,950	110,517	3,927	3,340	4,966	122,750
Nov	6,344	6,796	110,181	3,814	3,350	5,002	122,347
Dec	5,682	5,890	110,070	3,789	3,360	5,065	122,284
AVERAGE (12 MONTHS)	6,014	6,150	110,901	4,195	3,351	4,928	123,375
1995 Jan	5,583	5,944	109,645	3,875	3,358	5,045	121,923
Feb	5,964	6,515	109,261	3,878	3,270	5,016	121,425
Mar	5,810	6,221	108,800	3,903	3,305	5,088	121,096
Apr	7,096	7,086	108,822	3,907	3,365	5,209	121,303
May	5,288	5,784	108,343	3,773	3,369	5,328	120,813
Jun	5,558	6,458	107,541	3,639	3,336	5,358	119,874
Jul	5,977	6,781	107,028	3,574	3,286	5,293	119,181
Aug	5,547	6,294	106,475	3,489	3,260	5,239	118,463
Sep	5,922	6,647	105,943	3,303	3,260	5,175	117,681
Oct	7,062	7,359	105,917	3,224	3,257	5,110	117,508
Nov	6,083	6,660	105,445	3,164	3,199	5,189	116,997
Dec	5,582	5,775	105,287	3,165	3,189	5,258	116,899
AVERAGE	5,956	6,460	107,376	3,575	3,288	5,192	119,430
1996 Jan	5,332	6,236	104,430	3,139	3,173	5,113	115,855
Feb	5,217	6,283	103,561	3,161	3,170	5,060	114,952
AVERAGE	5,275	6,260	103,996	3,150	3,172	5,087	115,404

Data Sources: Data is derived from NJ Division of Family Development's FAMIS report # FF-012.

GRAPH 4

Eligible Families Receiving AFDC

February 1994 through February 1996



New Jersey Department of Human Services
Division of Family Development

TABLE 6

FOOD STAMP Program State Summary

**NUMBER OF ATP'S ISSUED TO HOUSEHOLDS, PERSONS,
ADULTS AND CHILDREN AT THE END OF THE REPORT MONTH**

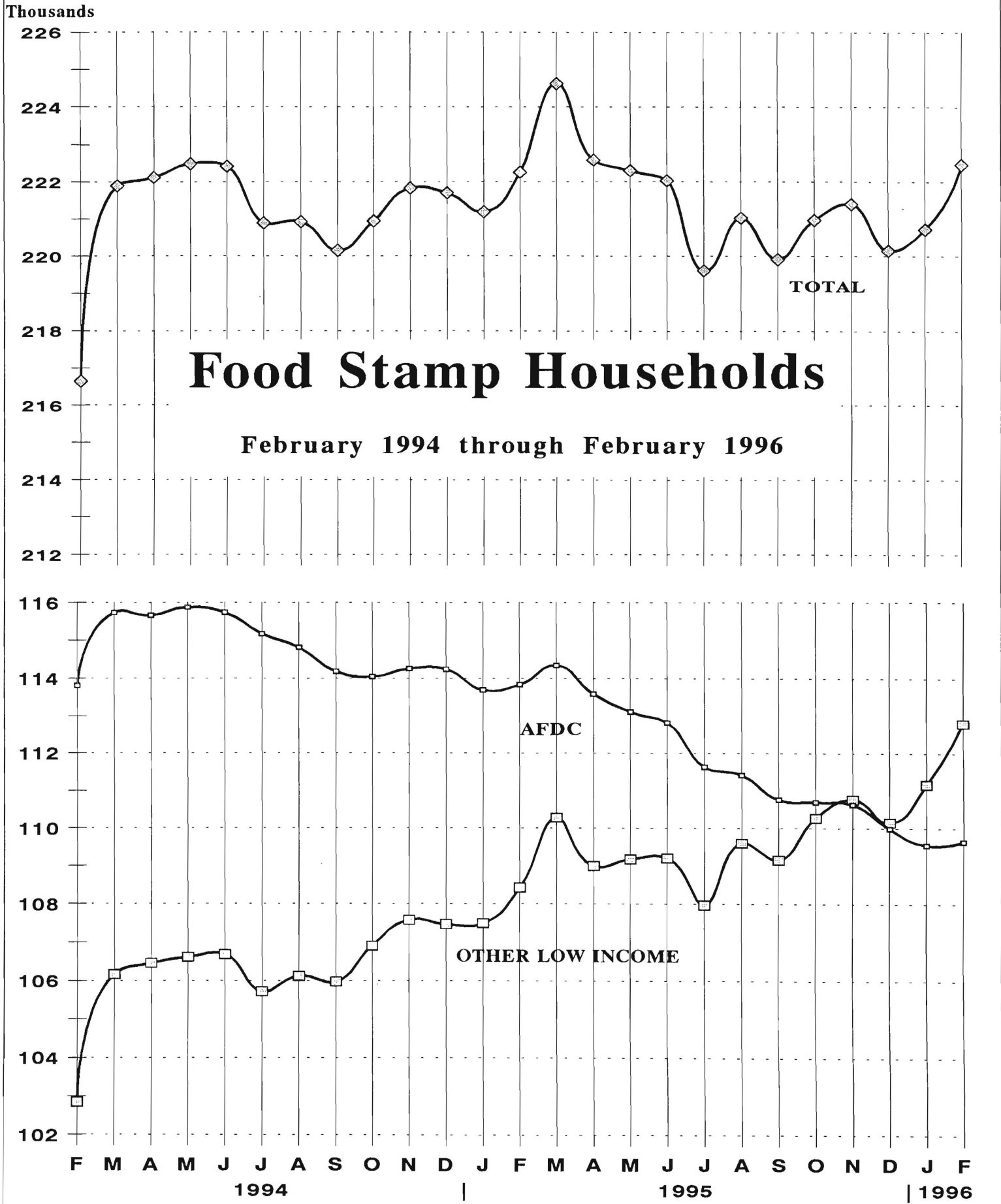
February 1994 through February 1996

	HOUSEHOLDS			TOTAL	TOTAL	PERSONS		
	AFDC	Other low income	TOTAL			AFDC	Other low income	Adults
1994Feb	113,804	102,843	216,647	519,760	359,227	160,533	241,993	277,767
Mar	115,730	106,160	221,890	530,892	365,132	165,760	248,219	282,673
Apr	115,661	106,454	222,115	530,591	365,241	165,350	248,331	282,260
May	115,874	106,611	222,485	530,595	364,941	165,654	248,420	282,175
Jun	115,737	106,683	222,420	529,514	364,394	165,120	248,099	281,415
Jul	115,172	105,717	220,889	526,075	362,520	163,555	246,142	279,933
Aug	114,809	106,115	220,924	524,659	361,106	163,553	246,052	278,607
Sep	114,177	105,972	220,149	521,945	358,849	163,096	244,835	277,110
Oct	114,039	106,903	220,942	522,406	358,010	164,396	245,676	276,730
Nov	114,251	107,577	221,828	524,090	358,582	165,508	246,659	277,431
Dec	114,232	107,467	221,699	523,825	358,446	165,379	246,517	277,308
AVERAGE (12 MONTHS)	114,789	105,924	220,714	525,325	361,323	164,003	246,043	279,282
1995 Jan	113,691	107,493	221,184	522,125	356,763	165,362	245,837	276,288
Feb	113,830	108,421	222,251	524,344	357,419	166,925	247,107	277,237
Mar	114,339	110,279	224,618	529,456	359,404	170,052	249,994	279,462
Apr	113,588	108,991	222,579	524,102	356,717	167,385	247,367	276,735
May	113,125	109,171	222,296	522,173	355,099	167,074	246,949	275,224
Jun	112,827	109,198	222,025	521,084	354,211	166,873	246,557	274,527
Jul	111,635	107,978	219,613	515,478	350,378	165,100	243,727	271,751
Aug	111,415	109,603	221,018	516,618	349,372	167,246	245,110	271,508
Sep	110,760	109,154	219,914	513,517	347,126	166,391	243,723	269,794
Oct	110,697	110,268	220,965	514,598	346,519	168,079	244,911	269,687
Nov	110,630	110,763	221,393	514,823	346,034	168,789	245,455	269,368
Dec	109,992	110,155	220,147	511,727	343,955	167,772	243,965	267,762
AVERAGE	112,211	109,290	221,500	519,170	351,916	167,254	245,892	273,279
1996 Jan	109,554	111,166	220,720	512,165	342,778	169,387	244,801	267,364
Feb	109,649	112,813	222,462	515,181	343,314	171,867	246,961	268,220
AVERAGE	109,602	111,990	221,591	513,673	343,046	170,627	245,881	267,792

ATP - Authorization to Participate

Data Sources: Data is derived from NJ Division of Family Development's FAMIS report # FB-160.

GRAPH 5





New Jersey Department of Human Services
Division of Family Development

TABLE 7

EMERGENCY ASSISTANCE Program for AFDC Recipients

State Summary

NUMBER OF ELIGIBLE FAMILIES RECEIVING EMERGENCY ASSISTANCE PAYMENTS

(UNDUPLICATED CASES)

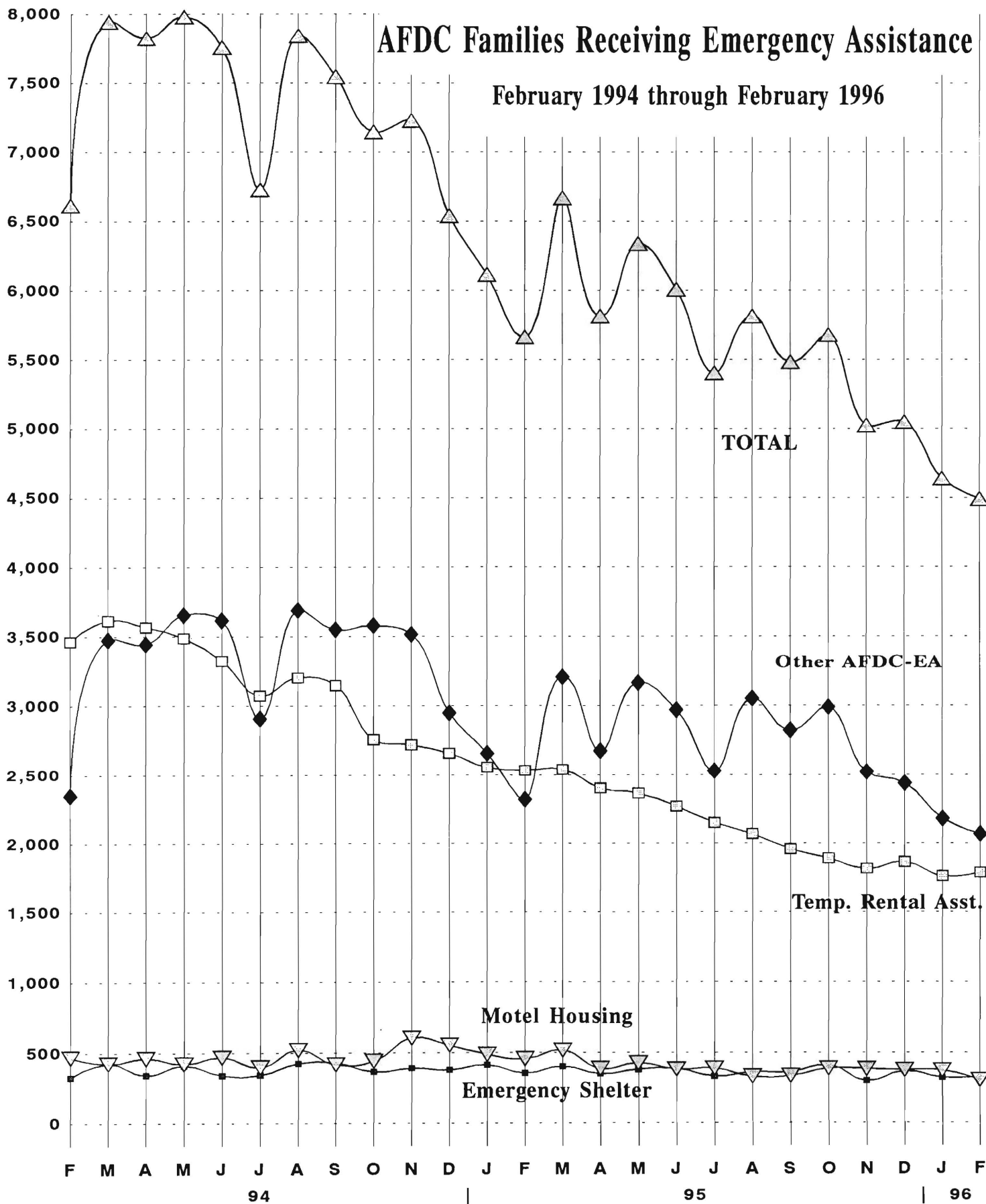
FEBRUARY 1994 through FEBRUARY 1996

	Total families receiving EA	Temporary rental assist.	Motel Housing	Emergency Shelter	Other AFDC-EA
1994 FEB	6,613	3,465	469	331	2,348
MAR	7,942	3,616	425	424	3,477
APR	7,821	3,568	462	345	3,446
MAY	7,977	3,488	423	411	3,655
JUN	7,755	3,326	469	343	3,617
JUL	6,727	3,075	400	344	2,908
AUG	7,840	3,204	520	426	3,690
SEP	7,545	3,147	418	430	3,550
OCT	7,147	2,759	442	366	3,580
NOV	7,231	2,720	604	391	3,516
DEC	6,540	2,658	554	379	2,949
Average (12 mos.)	7,326	3,218	468	379	3,260
1995 JAN	6,115	2,557	487	413	2,658
FEB	5,664	2,535	456	354	2,319
MAR	6,668	2,542	516	402	3,208
APR	5,815	2,402	387	351	2,675
MAY	6,338	2,364	427	381	3,166
JUN	6,007	2,268	382	387	2,970
JUL	5,402	2,149	389	334	2,530
AUG	5,813	2,068	331	362	3,052
SEP	5,482	1,958	336	364	2,824
OCT	5,678	1,891	388	410	2,989
NOV	5,024	1,816	384	302	2,522
DEC	5,048	1,864	377	369	2,438
Average	5,755	2,201	405	369	2,779
1996 JAN	4,639	1,761	374	325	2,179
FEB	4,490	1,788	305	330	2,067
Average	4,565	1,775	340	328	2,123

GRAPH 7

AFDC Families Receiving Emergency Assistance

February 1994 through February 1996



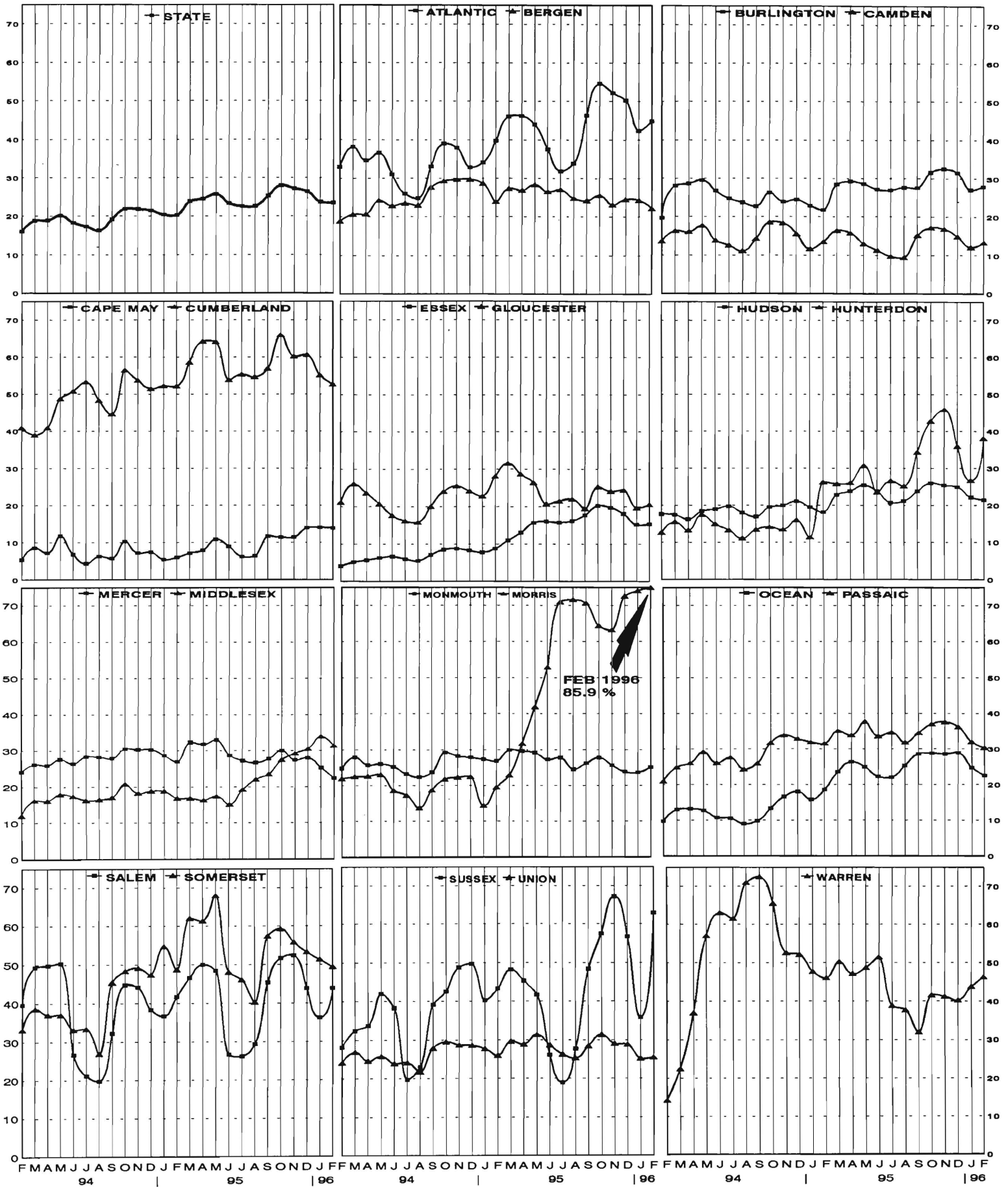
**New Jersey Department of Human Services
Division of Family Development**

**TABLE 8
JOBS/FDP PARTICIPATION RATES BY MONTH
(PERCENT)**

	STATE	ATLAN- TIC	BERGEN	BURL- INGTON	CAMDEN	CAPE MAY	CUM- BERLAND	ESSEX	GLOU- CESTER	HUDSON	HUNTER- DON	MERCER	MIDDLE- SEX	MON- MOUTH	MORRIS	OCEAN	PASSAIC	SALEM	SOMER- SET	SUSSEX	UNION	WARREN
1994 FEB	16.0	32.9	18.8	19.6	13.6	5.4	40.9	4.1	21.2	16.3	12.7	24.2	12.0	24.7	21.9	9.7	21.0	39.7	33.1	28.1	24.2	14.3
MAR	18.8	38.2	20.6	28.0	16.2	8.6	48.7	5.2	26.0	18.4	15.5	26.2	16.2	27.9	22.4	12.9	24.9	49.3	38.6	32.4	26.9	22.5
APR	18.9	34.7	20.7	28.6	16.0	7.2	50.8	5.7	23.6	19.0	13.3	26.0	16.2	25.7	22.6	13.2	26.0	49.8	37.0	33.7	24.6	37.0
MAY	20.1	36.6	24.2	29.6	17.6	11.8	53.2	6.3	20.7	19.7	17.5	27.6	17.9	26.0	23.1	12.7	29.2	50.3	37.0	42.0	25.8	57.1
JUN	18.3	31.0	22.9	26.8	13.8	6.9	48.3	6.7	17.6	18.1	15.0	26.4	17.4	25.2	18.6	10.8	26.1	26.7	33.2	38.3	23.9	63.0
JUL	17.3	26.0	23.5	24.7	12.6	4.4	44.7	6.0	16.2	17.0	13.3	28.4	16.3	23.2	17.3	10.6	27.7	21.2	33.4	19.7	24.2	61.5
AUG	16.3	24.8	23.0	23.7	11.1	6.3	45.1	5.5	15.8	15.7	11.1	28.3	16.5	22.3	13.7	9.0	24.3	19.8	26.9	23.0	21.8	71.0
SEP	19.1	33.0	27.6	22.7	14.3	5.8	52.5	7.2	20.0	17.9	13.4	27.9	17.1	23.7	18.7	9.9	25.9	32.2	45.4	39.2	27.9	72.5
OCT	21.8	39.0	29.3	26.2	18.5	10.4	56.4	8.5	24.0	19.5	14.2	30.5	20.8	29.2	21.7	13.4	31.9	44.8	48.3	42.6	29.5	65.4
NOV	21.8	38.0	29.7	23.9	18.3	7.3	53.7	8.8	25.5	20.0	13.5	30.4	18.2	28.2	22.2	16.7	33.9	44.2	49.1	48.7	28.7	52.6
DEC	21.5	32.8	29.7	24.4	15.5	7.5	51.5	8.3	24.2	21.1	16.1	30.4	18.8	27.8	22.4	18.1	33.0	38.3	47.4	49.6	28.6	52.2
1995 JAN	20.4	34.2	28.6	22.9	11.7	5.5	52.2	7.8	22.8	19.6	11.5	28.7	18.8	27.3	14.4	15.8	32.1	36.7	54.7	40.2	27.7	47.7
FEB	20.3	39.8	23.9	21.8	13.6	6.0	52.1	8.8	28.1	18.1	26.2	27.0	16.8	26.8	19.5	18.6	31.7	41.7	48.7	43.3	26.0	46.1
MAR	23.8	46.1	27.3	28.5	16.3	7.2	58.6	11.0	31.6	22.9	25.8	32.5	16.9	29.9	22.9	23.6	35.1	46.6	62.0	48.2	29.6	50.3
APR	24.5	46.3	26.9	29.2	15.7	7.9	64.1	13.0	28.7	23.8	26.1	31.9	16.3	29.6	31.9	26.4	33.9	50.0	61.3	45.3	28.9	47.2
MAY	25.7	44.0	28.3	28.6	12.9	10.9	64.0	15.7	26.4	25.4	30.6	33.1	17.4	29.1	42.0	25.0	37.7	48.4	68.0	41.7	31.4	48.7
JUN	23.3	37.7	26.5	27.1	11.3	9.0	53.8	16.0	20.7	23.8	23.5	28.7	15.1	27.2	52.9	22.3	33.6	26.7	48.1	26.1	28.6	51.5
JUL	22.5	31.9	27.0	26.9	9.8	6.3	55.3	15.8	21.5	20.8	26.6	27.3	19.2	27.7	71.0	22.1	34.7	26.3	46.1	19.0	26.3	38.9
AUG	22.6	33.9	24.8	27.7	9.5	6.5	54.6	16.2	22.0	21.2	25.2	26.7	22.0	24.5	71.7	25.4	32.0	29.4	40.3	27.7	25.2	37.8
SEP	25.2	46.4	24.2	27.6	15.1	11.7	56.9	17.7	19.5	23.8	34.3	27.8	23.6	26.2	70.7	28.6	34.5	45.3	57.3	48.4	28.4	32.0
OCT	27.9	54.6	25.5	31.5	17.1	11.4	65.9	20.2	25.3	26.0	42.7	30.1	27.5	27.8	64.4	28.9	37.0	51.7	59.3	57.5	31.4	41.7
NOV	27.2	52.2	23.1	32.5	16.8	11.5	60.2	19.7	24.1	25.4	45.8	27.4	29.3	25.6	63.3	28.6	37.6	52.4	55.8	67.2	29.0	41.3
DEC	26.4	50.3	24.5	31.5	14.8	13.9	60.6	18.1	24.4	25.0	35.9	28.0	30.6	23.9	72.6	28.9	36.2	43.9	53.2	56.7	28.8	40.3
1996 JAN	23.7	42.5	24.3	27.1	12.0	14.1	55.1	15.2	19.7	22.2	26.7	25.3	34.0	23.6	74.1	24.8	32.1	36.3	51.3	35.8	25.2	43.8
FEB	23.5	44.9	22.2	27.9	13.3	13.9	52.6	15.3	20.5	21.5	38.0	22.3	31.5	25.1	85.9	22.6	30.4	43.9	49.4	62.9	25.5	46.3

GRAPH 8

JOBS/FDP PARTICIPATION RATES (%)



New Jersey Department of Human Services
Division of Family Development

TABLE 9
GENERAL ASSISTANCE Program
State Summary

**NUMBER OF EMPLOYABLE AND UNEMPLOYABLE
RECIPIENTS DURING REPORT MONTH**
August 1993 through August 1995

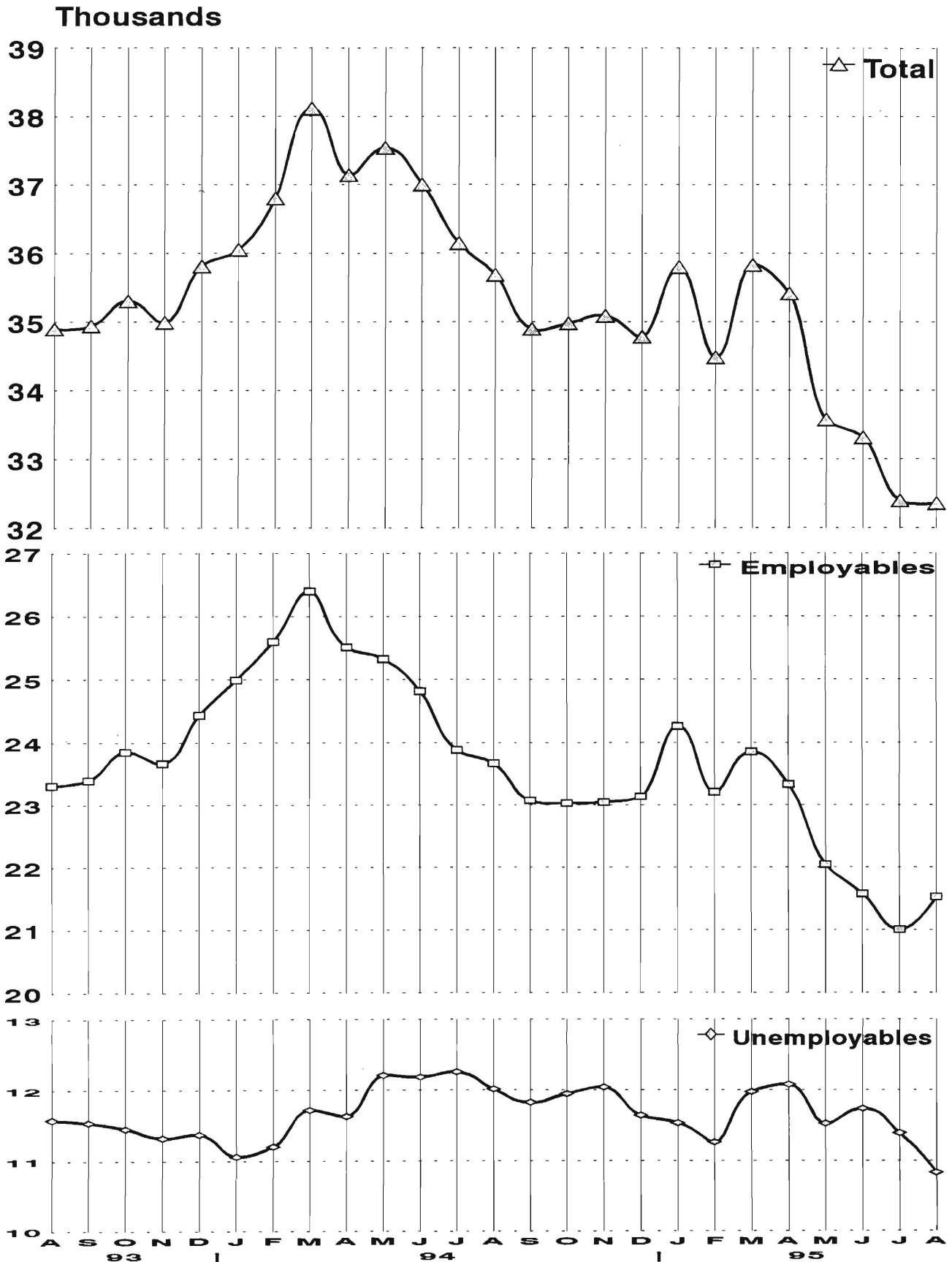
		Number of Persons Aided		
		Employables	Unemployables	Total
1993	Aug	23,320	11,580	34,900
	Sep	23,402	11,542	34,944
	Oct	23,853	11,455	35,308
	Nov	23,668	11,324	34,992
	Dec	24,435	11,374	35,809
	AVERAGE (12 mos)		24,250	11,374
1994	Jan	24,992	11,062	36,054
	Feb	25,600	11,202	36,802
	Mar	26,397	11,719	38,116
	Apr	25,512	11,629	37,141
	May	25,327	12,212	37,539
	Jun	24,814	12,190	37,004
	Jul	23,884	12,261	36,145
	Aug	23,671	12,018	35,689
	Sep	23,075	11,825	34,900
	Oct	23,031	11,950	34,981
	Nov	23,046	12,045	35,091
	Dec	23,142	11,642	34,784
	AVERAGE		24,486	11,828
1995	Jan	24,262	11,537	35,799
	Feb	23,219	11,264	34,483
	Mar	23,855	11,976	35,831
	Apr	23,337	12,082	35,419
	May	22,046	11,527	33,573
	June	21,575	11,738	33,313
	July	21,000	11,391	32,391
	August	21,526	10,829	32,355
	AVERAGE		22,603	11,543

Data Sources: Data is derived from NJ Division of Family Development

GRAPH 9

General Assistance Recipients

August 1993 through August 1995



New Jersey Department of Human Services
Division of Family Development

TABLE 10

CHILD SUPPORT AND PATERNITY State Summary

Child Support and Paternity Collections

\$1000's

COLLECTION SOURCE	Fiscal Years			Most Recent Six Months		
	1994	1995	% change	7/94-12/94	7/95-12/95	% change
AFDC & FOSTER CARE						
Federal Tax	\$15,255	\$15,664	2.7%	\$1,246	\$1,931	55.0%
State Tax	1,970	1,762	-10.6%	979	1,075	9.8%
Unempl. Ins. Ben.	4,975	3,867	-22.3%	1,389	2,407	73.3%
Income Withholding	43,219	45,262	4.7%	22,146	22,562	1.9%
Other/Own Behalf	18,138	18,431	1.6%	9,031	8,011	-11.3%
From Other States	3,621	3,429	-5.3%	1,694	1,625	-4.0%
For Other States	5,269	6,873	30.5%	3,346	3,640	8.8%
TOTAL COLLECTION	\$92,447	\$95,289	3.1%	\$39,831	\$41,250	3.6%
NON- AFDC						
Federal Tax	\$6,547	\$6,822	4.2%	\$956	\$1,225	31.3%
State Tax	2,210	2,044	-7.5%	1,198	1,356	13.2%
Unempl. Ins. Ben.	15,110	13,338	-11.7%	5,183	7,799	50.5%
Income Withholding	214,405	251,694	17.4%	119,284	128,399	7.6%
Other/Own Behalf	144,715	156,899	8.4%	76,588	67,859	-11.4%
From Other States	19,969	20,835	4.3%	9,962	9,855	-1.1%
For Other States	20,015	27,338	36.6%	13,154	13,901	5.7%
TOTAL COLLECTION	\$422,970	\$478,969	13.2%	\$226,326	\$230,425	1.8%
TOTAL						
Federal Tax	\$21,802	\$22,486	3.1%	\$2,202	\$3,186	44.7%
State Tax	4,179	3,806	-8.9%	2,177	2,431	11.7%
Unempl. Ins. Ben.	20,085	17,205	-14.3%	6,573	10,206	55.3%
Income Withholding	257,624	296,957	15.3%	141,430	150,961	6.7%
Other/Own Behalf	162,853	175,329	7.7%	85,619	75,870	-11.4%
From Other States	23,590	24,264	2.9%	11,655	11,480	-1.5%
For Other States	25,284	34,211	35.3%	16,500	17,541	6.3%
TOTAL COLLECTION	\$515,417	\$574,258	11.4%	\$266,157	\$271,675	2.1%

Collection Source: Reflects Collections Recorded by County Probation Departments

Explanatory Notes

The Department of Human Services Division of Family Development provides basic income and an opportunity to achieve self-sufficiency for individuals and families served by the Division's programs. The Division provides leadership, direction and supervision to those public agencies responsible for administering those programs and plans for and develops policies to promote self-sufficiency.

AID TO FAMILIES WITH DEPENDENT CHILDREN (AFDC) - Financial assistance for dependent children and their natural or adoptive parents, or certain other relatives recognized as taking the place of a parent.

Regular AFDC (C Segment) - assistance when only one parent is in the home due to death or absence, or both parents are in the home but at least one is incapacitated.

Unemployed Parents (F Segment) - assistance when both parents are in the home, neither is incapacitated and the primary wage earner meets the federally defined criteria for unemployment.

State AFDC (N Segment) - assistance when both parents are in the home, neither is incapacitated, and the primary wage earner does not meet the federal definition of unemployment.

Medicaid Only - families no longer receiving AFDC financial assistance but remaining eligible for Medicaid under applicable provisions which extend coverage beyond period of AFDC assistance.

FOOD STAMP PROGRAM (FS) - Authorized by Congress as a nutritional supplement program to provide low income households with more food of greater variety and better nutrition. Program eligibility is based on household income, resources, and expenses for medical, shelter, and dependent care. CWA staff refer certain recipients to the New Jersey Department of Labor for participation in the Food Stamp Employment and Training Program.

EMERGENCY ASSISTANCE (EA) - Payments to those eligible for AFDC (also for Supplemental Security Income, or for General Assistance which is not included here), authorized during the 30 consecutive days immediately following the emergency (defined as a substantial loss of shelter, food, clothing, or household furnishings by fire, flood or other similar disaster) or if the eligible individual or family is in an imminent or actual state of homelessness.

JOBS/FDP

JOB OPPORTUNITY AND BASIC SKILLS PROGRAM (JOBS) - Federally mandated work/training program for recipients of AFDC established by the Family Support Act of 1988 under Part F of Title IV of the Social Security Act.

FAMILY DEVELOPMENT PROGRAM (FDP) - Reform legislation enacted by the State Legislature in January 1992 to: build, strengthen, and support the family unit; encourage family formation; reduce the long-term aspects of welfare dependency; look to the needs of the family unit as a whole; emphasize education and training for all family members; maximize use of educational, training and employment resources; and develop genuine private sector job opportunities.

SNAPSHOT OF ACTIVITY AT POINT IN TIME - Status of activities as of the end of the month:

Total Non-Exempt JOBS/FDP Recipients - Calculation of the number of mandatory IV-F individuals (FAMIS report # FB304).

Employment Directed Activities (EDA) - From Activities Summary Report (OMEGA report # RM064). Unduplicated count of persons participating in **Training, Education, or Job Search**.

Participants in EDA, Receiving Support Services - From Issuance Disbursement Summary (OMEGA report # RM703). Total number of active participants who show receipt of **Training Related Expenses or Child Care**.

Participation Rate (JOBS/FDP) - Federally mandated calculation method, dividing the number of participants whose combined and averaged weekly hours of participation in qualifying activities equals or exceeds 20 hours per week by the total number of non-exempt IV-F recipients. As of the end of the month.

ACTIVITY FOR THE MONTH - Number of participants with the indicated activity during the month:

Participants with First Case Management Interview - From Activities Summary Report (OMEGA report # RM064).

Number of Persons Employed This Month, Still Receiving AFDC - From Activities Summary Report (OMEGA report # RM064).

Number of Persons Closed on FAMIS Due to Earnings - From FAMIS report # FM463.

Post AFDC and Receiving Child Care - Persons no longer in receipt of AFDC, but still receiving child care. From Issuance Disbursement Summary (OMEGA report # RM703).

New Jersey Department of Human Services
Division of Family Development

TABLE 11

GENERAL ASSISTANCE Program

NUMBER OF EMPLOYABLE AND UNEMPLOYABLE RECIPIENTS
DURING REPORT MONTH
COUNTIES AND 21 LARGEST MUNICIPALITIES

August 1995

County	Employables	Unemployables	Total	Municipality	Employables	Unemployables	Total
ATLANTIC	1,024	522	1,546	Atlantic City	813	312	1,125
BERGEN	538	489	1,027	Mount Holly	152	79	231
BURLINGTON	503	392	895	Camden	1,245	734	1,979
CAMDEN	1,638	1,143	2,781	Vineland	195	115	310
CAPE MAY	70	84	154	East Orange	592	447	1,039
CUMBERLAND	333	204	537	Irvington	281	86	367
ESSEX	7,437	2,377	9,814	Montclair	186	86	272
GLOUCESTER	138	146	284	Newark	5,833	1,519	7,352
HUDSON	1,201	1,122	2,323	Orange	428	58	486
HUNTERDON	51	59	110	Bayonne	115	56	171
MERCER	1,857	724	2,581	Hoboken	158	120	278
MIDDLESEX	597	535	1,132	Jersey City	634	486	1,120
MONMOUTH	819	654	1,473	Trenton	1,737	631	2,368
MORRIS	166	204	370	Perth Amboy	128	105	233
OCEAN	722	443	1,165	Asbury Park	213	97	310
PASSAIC	2,330	562	2,892	Long Branch	213	82	295
SALEM	129	79	208	Lakewood	340	111	451
SOMERSET	99	150	249	Passaic	682	249	931
SUSSEX	72	54	126	Paterson	1,506	154	1,660
UNION	1,738	835	2,573	Elizabeth	1,065	485	1,550
WARREN	64	51	115	Plainfield	271	109	380
NJ TOTAL	21,526	10,829	32,355	NJ TOTAL	16,787	6,121	22,908