

FILE A CLAIM: New users register here

Existing users log in here

ALREADY FILED? Check claim status (and get your 1099-G)

Certify for weekly benefits

[Home](#) / [Before You Apply](#) / [About Unemployment Insurance](#) / [Step-by-Step Guide](#)
/ How to apply online for Unemployment Insurance benefits

How to apply online for Unemployment Insurance benefits



1
Get your information ready.

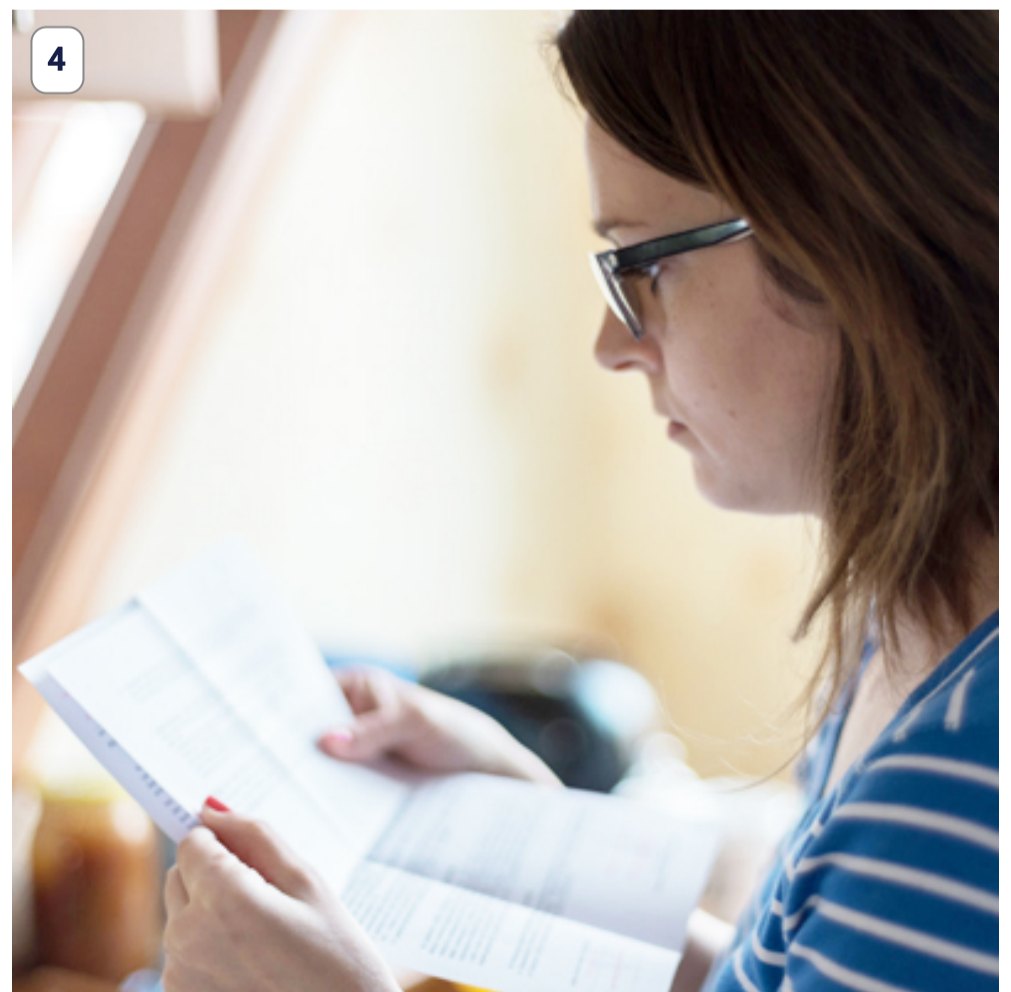
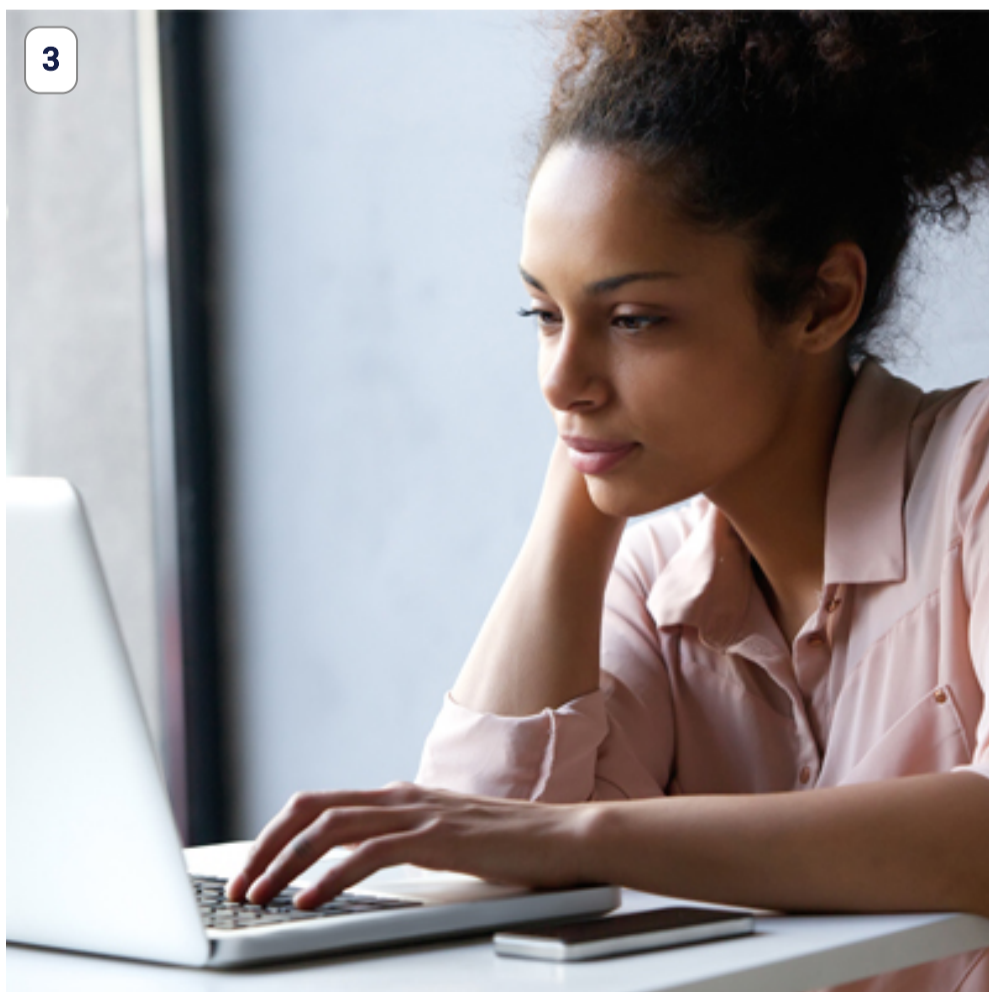
It'll be easier to fill out your application that way.

[LEARN MORE >](#)

2
Create an account.

It's a simple, easy, and secure process.

[LEARN MORE >](#)



3
Review your application.

Check your information and make sure it's correct. You can also update your information if needed. Once you've reviewed your application, you can submit it.

Use our online tools.

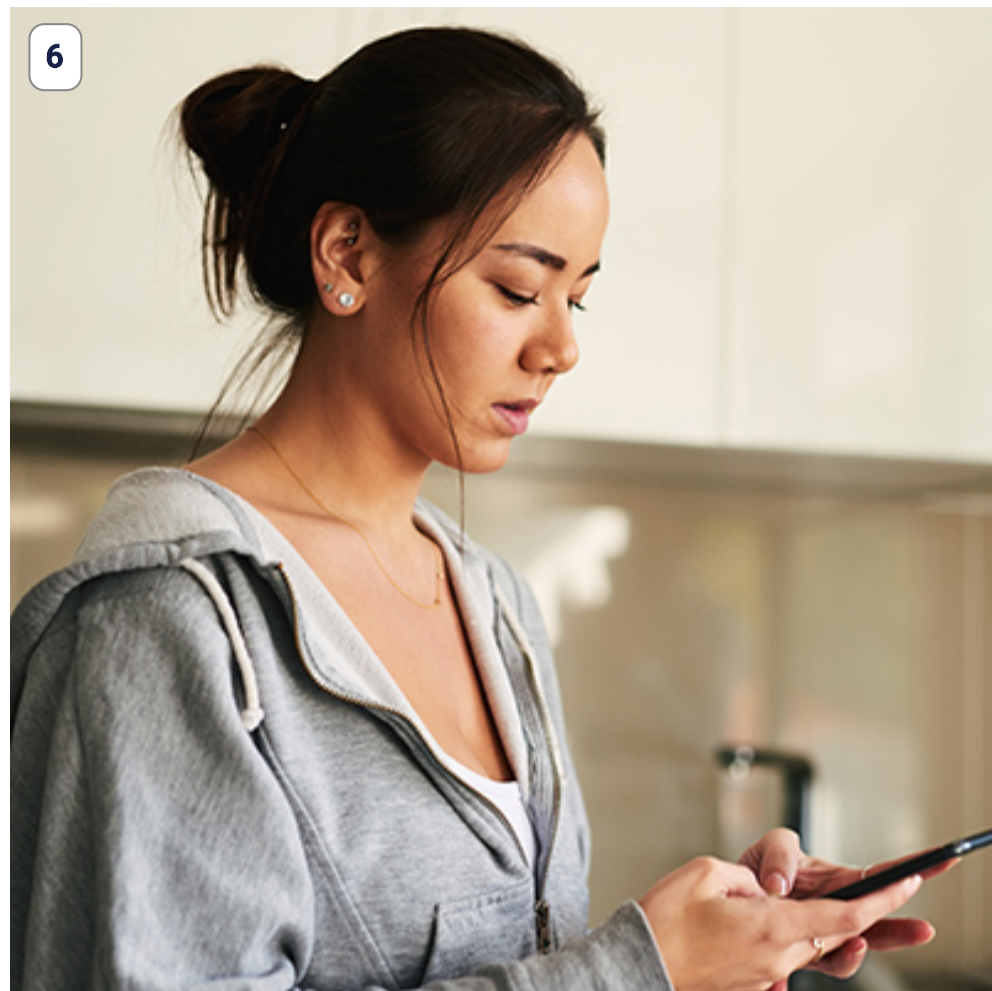
File a new claim, update your information, and more.

[LEARN MORE >](#)

Check your mailbox.

We may send forms and notices by postal mail as well as email.

[LEARN MORE >](#)



Certify for your benefits.

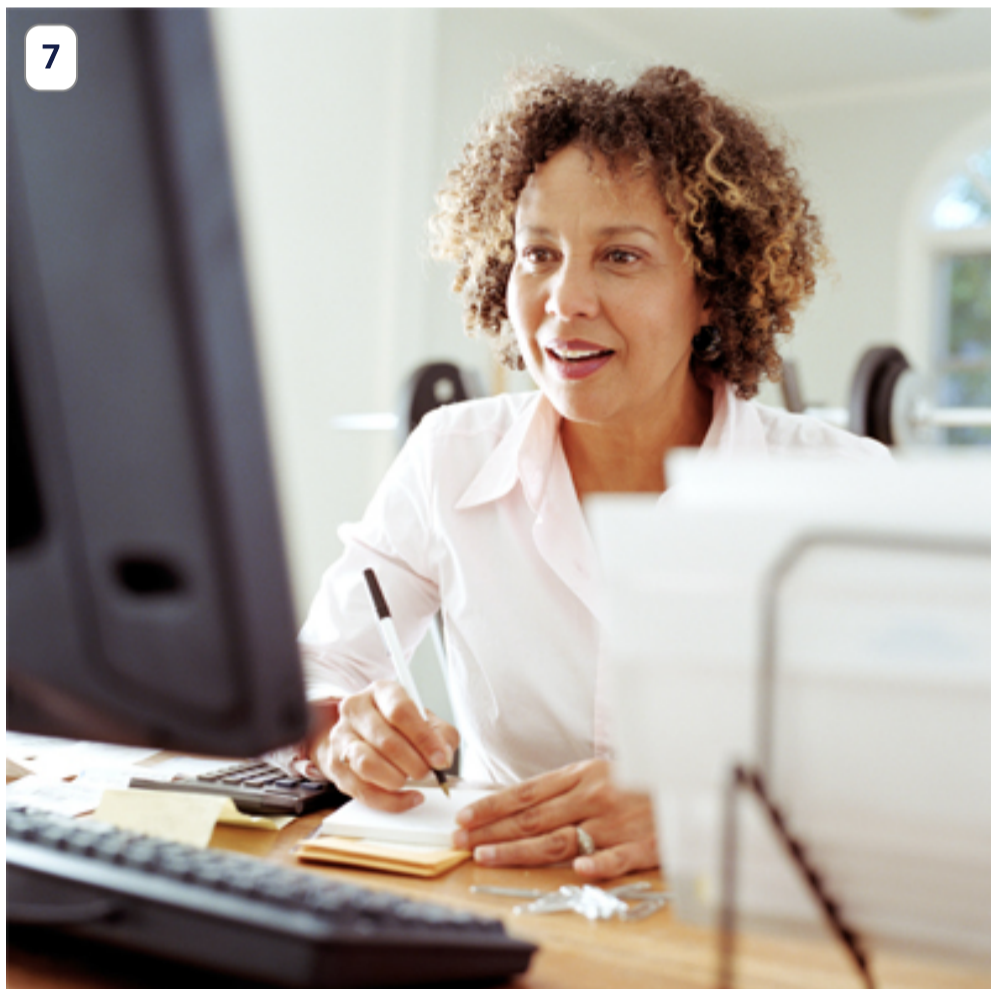
You need to do this each week.

[LEARN MORE >](#)

Verify your identity.

For your protection, we take steps to verify your identity.

[LEARN MORE >](#)



Start your job search.

While getting benefits, you need to be actively looking for work.

[LEARN MORE >](#)

Explore training options.

You might want to take advantage of our approved training programs.

[LEARN MORE >](#)



Adjust your federal income tax withholding.

Doing so can help offset future tax liabilities.

[LEARN MORE >](#)



Add dependents to your claim, if they qualify.

Your partner and/or children must meet certain requirements.

[LEARN MORE >](#)



Respond to our emails.

If we ask for more information and you don't reply, you may be ineligible for benefits.

[LEARN MORE >](#)

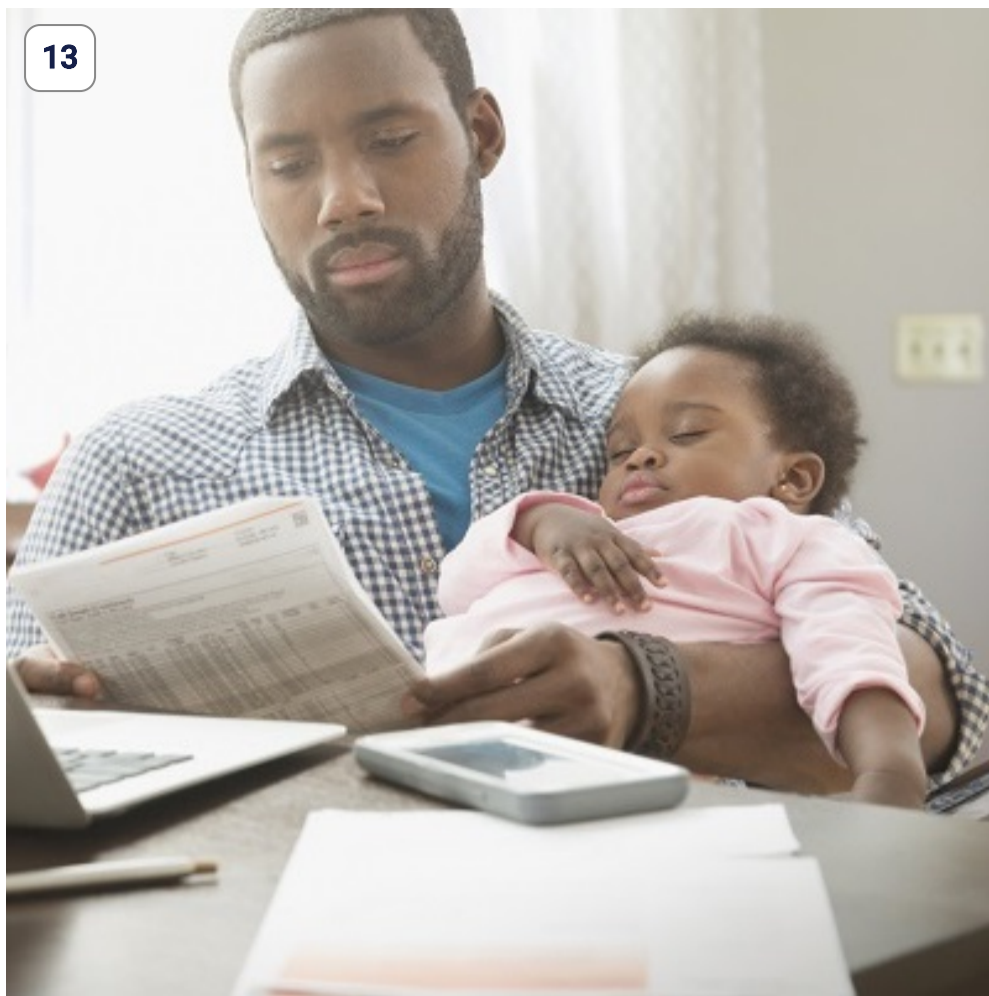


Need more help?

Learn how to appeal a determination, reopen a claim, end your benefits, and more.

[LEARN MORE >](#)

13



Benefits Ended?

If you need additional support, there may be resources available.

[LEARN MORE >](#)

Division of Unemployment Insurance

Home

Before You Apply

If You Already Filed a Claim

Tools for Jobseekers

Tools for Employers

Appeals

Need Help?

Statewide

Governor Phil Murphy

Lt. Governor Tahesha Way

NJ Home

Services A to Z

Departments/Agencies

Contact Us

Privacy Notice

Legal Statement & Disclaimers

Accessibility Statement



