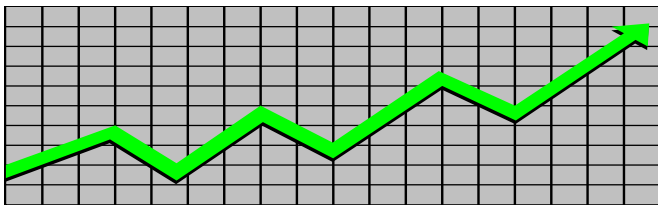


State of New Jersey
Department of Human Services
Division of Family Development

CURRENT PROGRAM STATISTICS



July 2021

Natasha Johnson, Assistant Commissioner

TABLE OF CONTENTS

HIGHLIGHTS:

WFNJ/TANF..... ii
NJ SNAP..... ii
EMERGENCY ASSISTANCE..... ii
GENERAL ASSISTANCE..... iii
GA Emergency Assistance..... iii
GA Program..... iii
CHILD SUPPORT SERVICES..... iii
WORK FIRST NEW JERSEY (WFNJ)..... iii
STATISTICS- BY STATE & COUNTY..... 1
Table 1: WFNJ/TANF Families & Persons (NJ Statewide) July 2019 to 2021..... 1
Table 2: WFNJ/TANF Families (by County)- July 2021..... 2
Table 2B: WFNJ/TANF Persons, Adults, & Children (by County)- July 2021..... 3
Table 3: TANF Work Participation Rates Over 12 Month Period (by County)- July 2021..... 4
Table 4: TANF Work Participation Rates Over 12 Month Period (NJ Statewide)- July 2021..... 5
Table 5: NJ SNAP Households/Persons (NJ Statewide) July 2019 to 2021..... 6
Table 6: NJ SNAP Recipient Trends (NJ Statewide) July 2019 to 2021..... 7
Table 7: NJ SNAP Households/Persons (by County)- July 2021..... 8
Table 8: Emergency Assistance Program (NJ Statewide) July 2019 to 2021..... 9
Table 9: Emergency Assistance Program (by County)- July 2021..... 10
Table 10: General Assistance Program (NJ Statewide) July 2019 to 2021..... 11
Table 11: General Assistance Program (by County)- July 2021..... 12
Table 12: Child Support Services Distributions (NJ Statewide) FFY 2021..... 13
Table 13: Child Support Services Paternities Established- July 2021..... 14
Table 14: Child Support Services Cases With Orders- July 2021..... 15
Table 15: Child Support Services Collections On Current Support- July 2021..... 16
Table 16: Child Support Services Cases With Payments On Arrears- July 2021..... 17
Table 17: WFNJ Statistical Summary- July 2021..... 18
ACRONYMS..... 19
EXPLANATORY NOTES..... 20
WFNJ Statistical Summary (Table 17)..... 20

DIVISION OF FAMILY DEVELOPMENT CURRENT PROGRAM STATISTICS

JULY 2021

Each month the Division of Family Development publishes its program statistics for: WFNJ/TANF, NJ SNAP, Emergency Assistance, General Assistance, and Child Support Services. When possible, information is provided separately for children and adults. Many tables also provide trend data with information broken down by county for readers to consider. This report is compiled and prepared by The Bureau of Research & Reporting.

WFNJ/TANF

- As of the end of July, the TANF caseload had decreased by 2,778 cases, from 12,100 in July 2020 to 9,322 in July 2021; a decrease of -23%.
- The counties with caseloads that decreased the most since July 2020 were Sussex (-43.2%), Cape May (-36.4%), and Burlington (-34.7%).
- Of the WFNJ/TANF cases, 3,068 or 32.9% were child-only in July 2021.
- The counties with the most child-only cases were Camden (516), Essex (372), and Hudson (361).
- Essex (3,724), Hudson (3,341), and Camden (3,137) counties had the greatest number of persons receiving TANF in July 2021.

NJ SNAP (Formerly FOOD STAMPS)

- In July 2021, there were 446,956 households receiving NJ SNAP benefits. The number of NJ SNAP households increased by 70,823 or 18.8%, since July 2020.
- There were 865,503 persons receiving NJ SNAP benefits as of July 2021; an increase of 130,685 or 17.8% since July 2020.
- The counties having the highest caseload increase since July 2020 were Essex (33.8%), Union (28.7%), and Atlantic (24.4%).

EMERGENCY ASSISTANCE

- There were 1,328 TANF families receiving Emergency Assistance (EA) in July 2021; a decrease of 229 or -14.7% since July 2020.
- In July 2021, EA payments were made for 584 SSI recipients.

**DIVISION OF FAMILY DEVELOPMENT CURRENT PROGRAM STATISTICS
JULY 2021**

- There were 1,954 GA cases with Emergency Assistance payments in July 2021; a decrease of 207 or -9.6% since July 2020.
- The counties that showed the highest percent increase in Emergency Assistance payments were Hudson (66.7%), Middlesex (36.8%), and Sussex (35.7%).
- The counties that showed the highest percent decrease in Emergency Assistance payments were Cumberland (-72.7%), Gloucester (-70.2%), and Passaic (-37.9%).

GENERAL ASSISTANCE

- The total number of cases receiving GA has decreased from 13,514 to 13,168 since July 2020; a decrease of -2.6%.
- There were 9,090 Employable GA and 4,078 Unemployable GA cases in July 2021.
- The counties that showed a percent increase for GA cases were Warren (69%), Hudson (25%), and Camden (10.3%) since July 2020.
- The counties that showed the highest percent decrease for GA cases since July 2020 were Cape May (-45.4%), Gloucester (-37.4%), and Hunterdon (-32.2%).
- In July 2021, GA cases showed a -0.6% decrease since June 2021.

CHILD SUPPORT SERVICES (QUARTERLY REPORT)

- The total collection for the Child Support Services Program was about \$323 million from April 2021 to June 2021; a decrease of -10.3% over the same period from FFY 2020.
- Total distributions decreased -10.6% from July 2020.

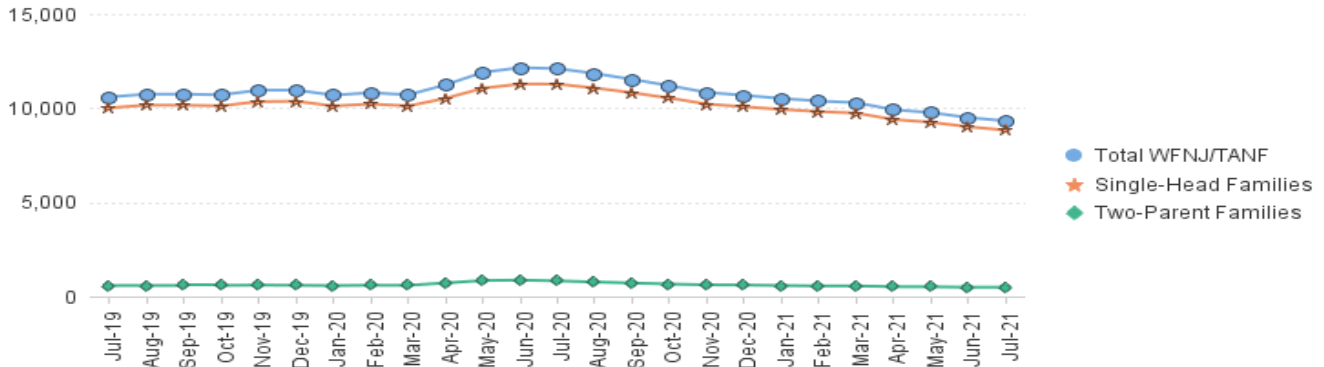
WORK FIRST NEW JERSEY (WFNJ)

- During the report month of July 2021, there were 254 families in which at least one member was employed and an additional 65 families whose WFNJ assistance cases were closed due to employment-related earnings.
- The three counties with the greatest number of employed active WFNJ recipients were: Essex (60), Hudson (44), and Mercer (22).
- There were 271 former TANF cases receiving post-TANF support in the form of child care assistance.

TABLE 1:
WFNJ/TANF PROGRAM STATEWIDE NUMBER OF APPLICATIONS AND TERMINATIONS DURING JULY 2021
NUMBER OF ELIGIBLE FAMILIES & PERSONS RECEIVING WFNJ/TANF FOR JULY 2021

JULY 2019 THROUGH JULY 2021												
		Cases Added	Cases Closed	Child-Only Cases ‡	Total Single-Head Families	2-Parent Families	Total WFNJ/TANF Families	%CHNG (1 Yr.)	Persons			
									Adults	Children		
2019	JUL	1,040	1,231	3,710	10,014	580	10,594	-18.0%	26,323	-17.8%	7,464	18,859
	AUG	1,209	1,135	3,723	10,158	582	10,740	-16.1%	26,735	-18.6%	7,599	19,136
	SEP	1,055	1,048	3,679	10,153	586	10,739	-14.8%	26,803	-14.0%	7,646	19,157
	OCT	1,137	1,253	3,556	10,120	586	10,706	-14.1%	26,933	-13.3%	7,736	19,197
	NOV	1,181	1,159	3,664	10,348	605	10,953	-11.1%	27,644	-10.1%	7,894	19,750
	DEC	1,053	1,042	3,689	10,364	593	10,957	-9.5%	27,766	-8.4%	7,861	19,905
2019	Average	1,044	1,220	3,795	10,322	596	10,918		27,263		7,720	19,543
2020	JAN	921	1,183	3,646	10,113	576	10,689	-8.3%	27,129	-6.5%	7,619	19,510
	FEB	1,066	1,007	3,669	10,222	596	10,818	-3.1%	27,517	-1.1%	7,745	19,772
	MAR	915	1,024	3,612	10,113	592	10,705	-3.7%	27,196	-1.5%	7,685	19,511
	APR	1,179	712	3,621	10,519	716	11,235	3.7%	28,765	6.7%	8,330	20,435
	MAY	832	232	3,696	11,057	845	11,902	10.2%	30,734	14.4%	9,051	21,683
	JUN	539	278	3,722	11,281	866	12,147	12.9%	31,370	17.6%	9,291	22,079
	JUL	458	526	3,686	11,274	826	12,100	14.2%	31,216	18.6%	9,240	21,976
	AUG	410	660	3,665	11,070	768	11,838	10.2%	30,454	13.9%	8,941	21,513
	SEP	475	796	3,603	10,817	711	11,528	7.3%	29,531	10.2%	8,636	20,895
	OCT	534	904	3,564	10,532	659	11,191	4.5%	28,657	6.4%	8,286	20,371
	NOV	419	767	3,470	10,218	617	10,835	-1.1%	27,738	0.3%	7,982	19,756
	DEC	434	595	3,410	10,071	607	10,678	-2.5%	27,371	-1.4%	7,875	19,496
2020	Average	682	724	3,614	10,607	698	11,306		28,973		8,390	20,583
2021	JAN	400	585	3,379	9,932	580	10,512	-1.7%	26,960	-0.6%	7,713	19,247
	FEB	378	504	3,347	9,818	559	10,377	-4.1%	26,520	-3.6%	7,589	18,931
	MAR	397	481	3,311	9,735	557	10,292	-3.9%	26,335	-3.2%	7,538	18,797
	APR	298	704	3,224	9,395	518	9,913	-11.8%	25,276	-12.1%	7,207	18,069
	MAY	264	510	3,209	9,250	513	9,763	-18.0%	24,858	-19.1%	7,067	17,791
	JUN	373	636	3,141	9,008	489	9,497	-21.8%	24,146	-23.0%	6,845	17,301
	JUL	391	590	3,068	8,829	493	9,322	-23.0%	23,785	-23.8%	6,747	17,038
2021	Average to date	357	573	3,240	9,424	530	9,954		25,411		7,244	18,168

NJ STATEWIDE Eligible Families Receiving WFNJ/TANF JULY 2019 THROUGH JULY 2021



Data is derived from NJ MMIS Shared Data Warehouse Issuance files.

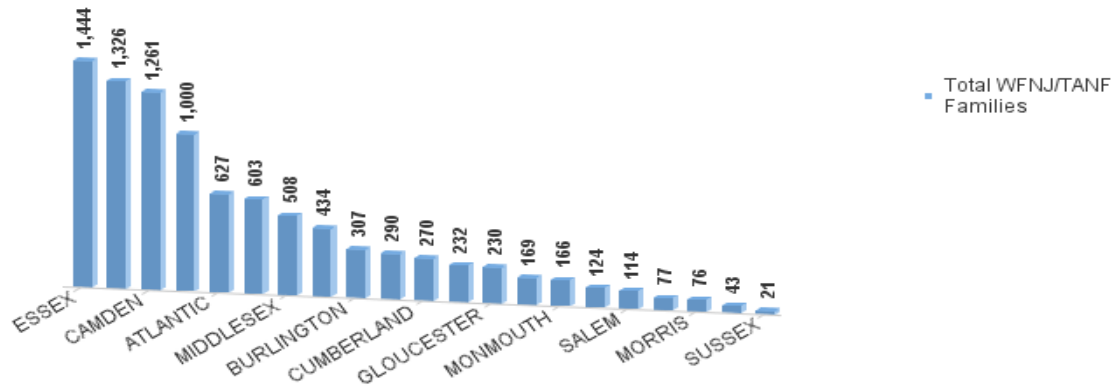
Effective July 2013 this data query source was converted to the SDW

‡ Child-only cases are defined as families in which no eligible adult receives TANF program benefits, yet the family continues to be headed by at least one of the biological parents, or grandparents, or other appropriate adult.

TABLE 2:
WFNJ/TANF NUMBER OF APPLICATIONS AND TERMINATIONS BY COUNTY DURING JULY 2021
PROGRAM NUMBER OF ELIGIBLE FAMILIES RECEIVING WFNJ/TANF FOR JULY 2021

County	Cases Added	Cases Closed **	Child-		Total		Total WFNJ/TANF Families	%CHNG (3 Mon)	%CHNG (1 Yr.)
			Only Cases ‡	1-Adult Cases	Single-Head Families	2-Parent Families			
ATLANTIC	11	22	256	344	600	27	627	-4.0%	-18.7%
BERGEN	8	14	55	163	218	14	232	-3.3%	-22.4%
BURLINGTON	11	15	114	182	296	11	307	-2.8%	-34.7%
CAMDEN	44	66	516	690	1,206	55	1,261	-2.7%	-16.5%
CAPE MAY	1	5	34	40	74	3	77	-9.4%	-36.4%
CUMBERLAND	12	16	119	136	255	15	270	-5.9%	-30.4%
ESSEX	57	125	372	1,012	1,384	60	1,444	-10.9%	-15.8%
GLOUCESTER	9	17	92	129	221	9	230	-6.5%	-32.7%
HUDSON	80	114	361	885	1,246	80	1,326	-4.2%	-34.4%
HUNTERDON	5	3	9	27	36	7	43	10.3%	-15.7%
MERCER	34	17	207	372	579	24	603	1.7%	-16.7%
MIDDLESEX	21	29	189	294	483	25	508	-3.2%	-17.8%
MONMOUTH	6	10	69	92	161	5	166	-6.2%	-31.4%
MORRIS	1	5	25	40	65	11	76	-9.5%	-26.9%
OCEAN	11	17	75	205	280	10	290	-7.9%	-27.0%
PASSAIC	20	40	318	636	954	46	1,000	-4.1%	-11.8%
SALEM	18	13	37	70	107	7	114	4.6%	-24.5%
SOMERSET	4	8	48	113	161	8	169	-4.5%	-26.5%
SUSSEX	1	1	6	12	18	3	21	-4.5%	-43.2%
UNION	23	41	127	245	372	62	434	2.6%	-28.1%
WARREN	14	12	39	74	113	11	124	-3.1%	-27.5%
NJ Total	391	590	3,068	5,761	8,829	493	9,322	-4.5%	-23.0%

Total WFNJ/TANF Families
JULY 2021
By County



Data is derived from NJ MMIS Shared Data Warehouse Issuance files.
 Effective July 2013 this data query source was converted to the SDW

‡ Child-only cases are defined as families in which no eligible adult receives TANF program benefits, yet the family continues to be headed by at least one of the biological parents, or grandparents, or other appropriate adult

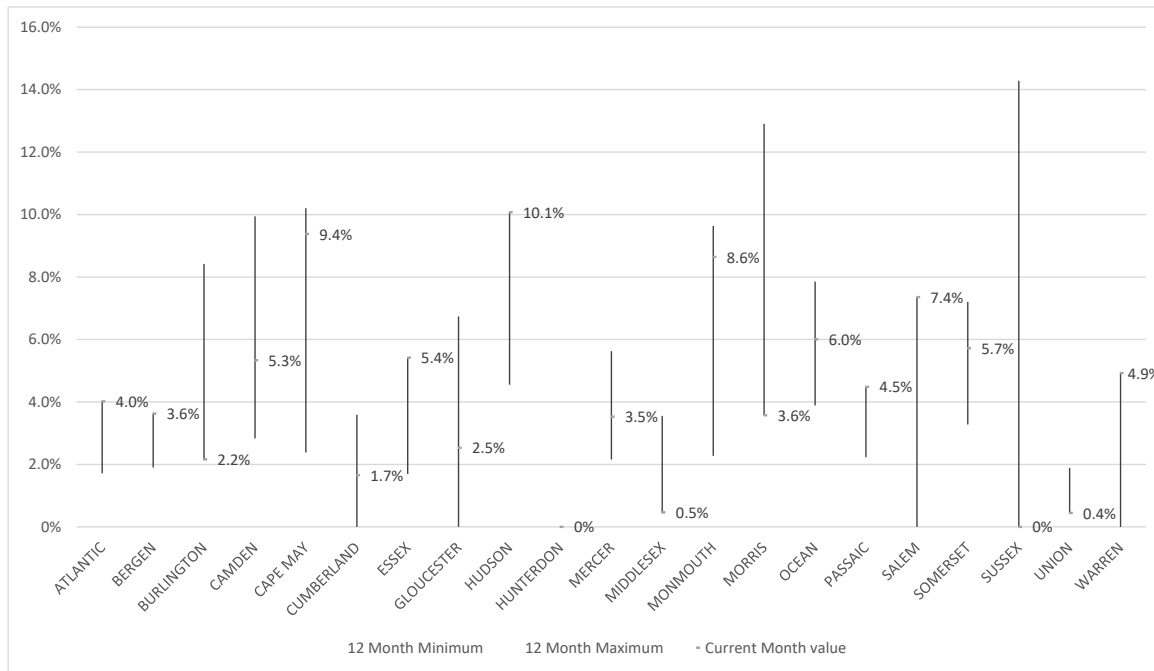
** 'Cases closed' include cases that received a benefit in the prior month, but did not receive any TANF benefit for the report month.

Δ=higher caseload % change

*=lower caseload % change

TABLE 3 :

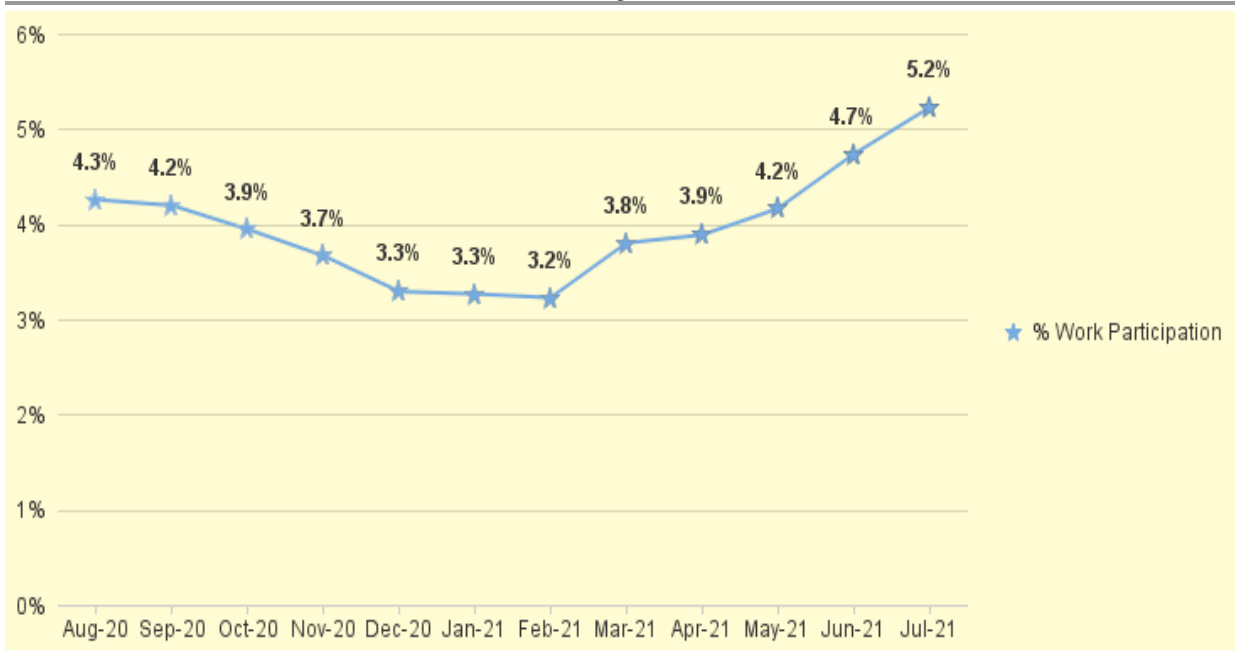
Work Participation Rates Achieved Over 12 Month Period
Ending with JULY 2021



Data is derived from NJ MMIS Shared Data Warehouse Issuance files.
Effective July 2013 this data query source was converted to the SDW

TABLE 4 :

WFNJ/TANF Work Participation Rates
for 12-Month Period Ending with JULY 2021 Statewide



* The Work Participation rate measures the number of countable Temporary Assistance for Needs Families (TANF) participants based on federal formula. The reported rate is considered to be preliminary until officially calculated by the federal government soon after the close of each federal fiscal year.

TABLE 5 :
NJ SNAP
(FOOD STAMPS)
NUMBER OF PARTICIPATING HOUSEHOLDS, PERSONS, ADULTS
AND CHILDREN FOR JULY 2021 (STATEWIDE)

		HOUSEHOLDS				PERSONS					
		WFNJ/ TANF	Other low income	Total	% CHNG (1 YR)	Adults	Children	TOTAL	% CHNG (1 YR)	Age 60+	People with a disability
2019	JUL	9,962	333,891	343,853	-6.4%	365,264	314,222	679,486	-7.2%	121,238	202,824
	AUG	10,570	336,384	346,954	-5.5%	368,890	317,373	686,263	-6.2%	121,200	203,620
	SEP	10,319	331,162	341,481	-7.0%	363,290	310,676	673,966	-7.8%	120,200	202,119
	OCT	10,242	328,140	338,382	-6.8%	360,298	305,917	666,215	-7.7%	119,254	200,853
	NOV	10,580	331,660	342,240	-5.1%	364,880	310,523	675,403	-5.8%	119,560	202,867
	DEC	10,445	330,157	340,602	-4.9%	362,992	308,279	671,271	-5.8%	119,046	205,081
2019	Average	10,313	334,715	345,028		366,125	315,561	681,686		121,550	203,671
2020	JAN	10,201	325,866	336,067	-6.3%	358,028	301,901	659,929	-7.4%	117,898	201,955
	FEB	10,245	326,468	336,713	0.4%	358,670	302,524	661,194	0.5%	117,775	201,863
	MAR	10,328	324,689	335,017	-4.8%	357,989	299,375	657,364	-5.8%	117,369	201,521
	APR	11,112	337,037	348,149	0.3%	373,744	309,095	682,839	-0.6%	118,173	204,375
	MAY	11,513	353,998	365,511	5.2%	394,281	323,636	717,917	4.4%	119,744	208,152
	JUN	11,522	358,302	369,824	6.7%	398,959	326,357	725,316	5.9%	120,137	209,224
	JUL	11,336	364,797	376,133	9.4%	405,652	329,166	734,818	8.1%	120,881	211,115
	AUG	11,044	373,293	384,337	10.8%	414,644	333,705	748,349	9.0%	118,173	204,375
	SEP	10,928	384,063	394,991	15.7%	426,710	342,621	769,331	14.1%	122,341	214,255
	OCT	10,605	393,716	404,321	19.5%	437,538	350,440	787,978	18.3%	123,068	216,012
	NOV	10,335	395,876	406,211	18.7%	440,136	350,631	790,767	17.1%	123,104	216,208
	DEC	10,308	401,212	411,520	20.8%	446,083	354,408	800,491	19.3%	123,498	221,131
2020	Average	10,790	361,610	372,400		401,036	326,988	728,024		120,180	209,182
2021	JAN	10,214	409,050	419,264	24.8%	454,910	360,490	815,400	23.6%	123,751	221,129
	FEB	9,980	413,080	423,060	25.6%	459,801	362,760	822,561	24.4%	123,888	221,585
	MAR	9,632	418,259	427,891	27.7%	465,302	366,223	831,525	26.5%	124,614	222,961
	APR	9,474	423,186	432,660	24.3%	470,412	369,625	840,037	23.0%	125,182	224,256
	MAY	9,371	428,961	438,332	19.9%	476,827	373,151	849,978	18.4%	125,750	225,339
	JUN	9,833	440,525	450,358	21.8%	490,430	393,310	883,740	21.8%	126,085	227,479
	JUL	9,067	437,889	446,956	18.8%	485,975	379,528	865,503	17.8%	126,552	227,352
2021	Average to date	9,653	424,421	434,074		471,951	372,155	844,106		125,117	223,906

This Table is based on those Households & Persons that received SNAP issuances (benefits) during the month

Data is derived from NJ MMIS Shared Data Warehouse.

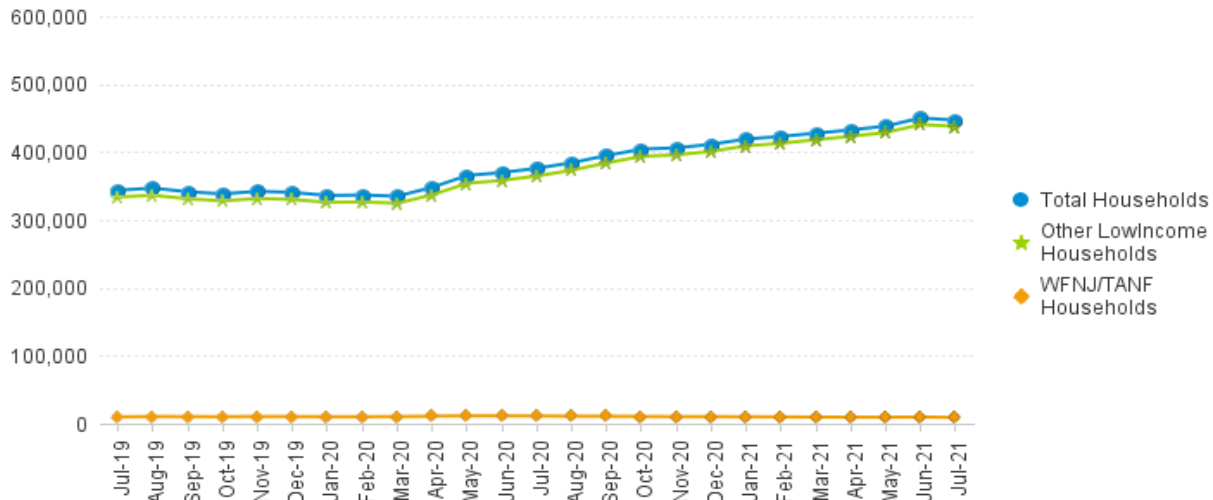
Effective July 2013 this data query source was converted to the SDW.

* Age 60+ and People with a disability columns are independent subsets of total persons. An individual might appear in both columns

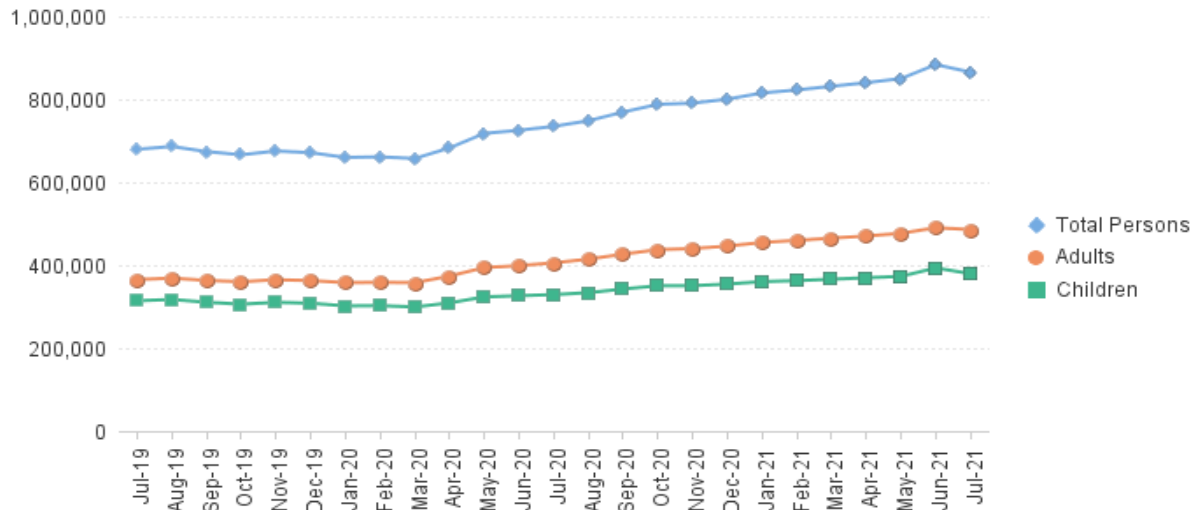
**TABLE 6: NJ SNAP
(FOOD STAMPS)**

**TRENDS FOR PARTICIPATING HOUSEHOLDS & PERSONS
JULY 2019 THROUGH JULY 2021 (STATEWIDE)**

Statewide NJ SNAP Households: JULY 2019 Through JULY 2021



Statewide NJ SNAP Persons: JULY 2019 Through JULY 2021



Data is derived from NJ MMIS Shared Data Warehouse Issuance files.
Effective July 2013 this data query source was converted to the SDW

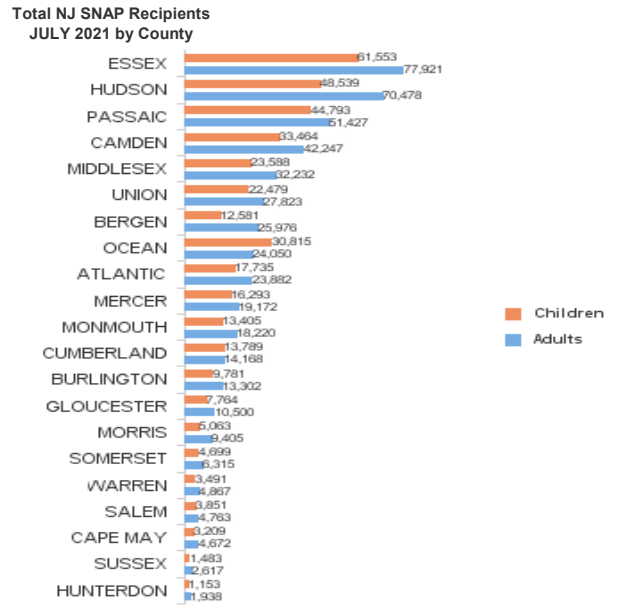
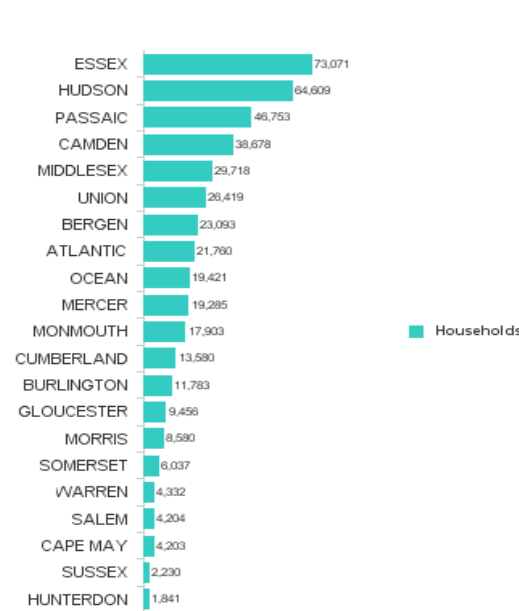
TABLE 7 :
NJ SNAP

NUMBER OF PARTICIPATING HOUSEHOLDS, PERSONS, ADULTS
AND CHILDREN BY COUNTY FOR JULY 2021

County	HOUSEHOLDS				PERSONS				Age 60+	People with a disability		
	WFNJ/ TANF	Other low income	TOTAL	% Chng (1 Yr)	Adults	Children	TOTAL	% Chng (1 Yr)				
ATLANTIC	563	21,197	21,760	24.4%	Δ	23,882	17,735	41,617	24.1%	Δ	5,055	10,855
BERGEN	253	22,840	23,093	18.3%		25,976	12,581	38,557	22.4%		12,333	15,845
BURLINGTON	285	11,498	11,783	13.2%		13,302	9,781	23,083	14.4%		2,845	6,863
CAMDEN	1,157	37,521	38,678	15.7%		42,247	33,464	75,711	14.0%		7,962	19,563
CAPE MAY	60	4,143	4,203	5.5%	*	4,672	3,209	7,881	6.9%		966	2,262
CUMBERLAND	246	13,334	13,580	15.0%		14,168	13,789	27,957	14.0%		2,717	7,109
ESSEX	1,541	71,530	73,071	33.8%	Δ	77,921	61,553	139,474	29.1%	Δ	15,779	31,362
GLOUCESTER	199	9,257	9,456	13.4%		10,500	7,764	18,264	15.1%		2,228	6,040
HUDSON	1,294	63,315	64,609	21.6%		70,478	48,539	119,017	17.7%		19,172	29,254
HUNTERDON	43	1,798	1,841	8.0%		1,938	1,153	3,091	11.7%		561	1,045
MERCER	622	18,663	19,285	18.3%		19,172	16,293	35,465	17.1%		4,314	10,594
MIDDLESEX	519	29,199	29,718	14.5%		32,232	23,588	55,820	15.1%		12,061	17,228
MONMOUTH	151	17,752	17,903	15.9%		18,220	13,405	31,625	15.2%		5,518	10,022
MORRIS	83	8,497	8,580	15.1%		9,405	5,063	14,468	18.1%		4,131	5,413
OCEAN	291	19,130	19,421	14.3%		24,050	30,815	54,865	19.6%		5,209	10,439
PASSAIC	967	45,786	46,753	7.0%		51,427	44,793	96,220	6.8%	*	13,525	21,025
SALEM	109	4,095	4,204	5.8%	*	4,763	3,851	8,614	6.1%	*	845	2,352
SOMERSET	158	5,879	6,037	12.6%		6,315	4,699	11,014	13.4%		2,107	3,482
SUSSEX	21	2,209	2,230	1.5%	*	2,617	1,483	4,100	1.5%	*	707	1,580
UNION	395	26,024	26,419	28.7%	Δ	27,823	22,479	50,302	26.3%	Δ	7,513	12,543
WARREN	110	4,222	4,332	13.5%		4,867	3,491	8,358	12.9%		1,004	2,476
NJ TOTAL	9,067	437,889	446,956	18.8%		485,975	379,528	865,503	17.8%		126,552	227,352

Δ=higher caseload % change

*=lower caseload % change



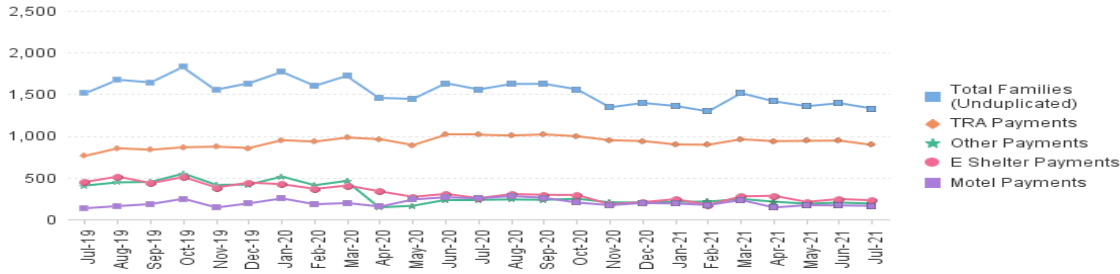
Data is derived from NJ MMIS Shared Data Warehouse.
Effective July 2013 this data query source was converted to the SDW.

* Age 60+ and People with a disability columns are independent subsets of total persons. An individual might appear in both columns

TABLE 8 :
EMERGENCY ASSISTANCE (STATEWIDE) **TOTAL NUMBER OF ELIGIBLE FAMILIES RECEIVING EMERGENCY ASSISTANCE PAYMENTS**
JULY 2019 THROUGH JULY 2021 - STATEWIDE

		Total WFNJ/EA Families (Undupl)		Temp Rent Asst. Payments (Undupl)		Motel Housing Payments (Undupl)		Shelter/Transitiona Housing Payments (Undupl)		Other WFNJ/EA Payments (Undupl)	
			% CHNG (1 YR)		% CHNG (1 YR)		% CHNG (1 YR)		% CHNG (1 YR)		% CHNG (1 YR)
2019	JUL	1,511	-9.3%	761	-11.6%	133	-28.1%	448	-0.7%	405	-9.4%
	AUG	1,673	3.1%	852	-0.6%	159	14.4%	513	16.3%	443	0.0%
	SEP	1,641	6.8%	834	4.4%	183	-2.7%	433	20.3%	449	7.2%
	OCT	1,830	12.8%	864	6.1%	247	30.0%	508	17.6%	549	16.8%
	NOV	1,555	-3.7%	871	2.2%	142	-11.3%	382	-16.2%	413	-1.0%
	DEC	1,632	0.7%	855	6.2%	192	-14.3%	440	-0.9%	417	-1.9%
2019	Average	1,578		827		164		427		438	
2020	JAN	1,767	15.7%	949	13.8%	251	59.9%	422	16.9%	513	2.6%
	FEB	1,600	15.1%	932	23.6%	181	20.7%	365	24.6%	409	-4.7%
	MAR	1,723	14.5%	980	16.3%	195	62.5%	406	-3.1%	462	19.4%
	APR	1,455	-5.9%	960	18.4%	153	-12.1%	334	-23.9%	144	-64.0%
	MAY	1,444	-9.1%	890	7.9%	238	63.0%	270	-41.0%	163	-63.5%
	JUN	1,632	5.9%	1,014	23.8%	265	61.6%	305	-28.6%	234	-43.3%
	JUL	1,557	3.0%	1,014	33.2%	251	88.7%	254	-43.3%	234	-42.2%
	AUG	1,623	-3.0%	1,005	18.0%	279	75.5%	303	-40.9%	238	-46.3%
	SEP	1,624	-1.0%	1,018	22.1%	258	41.0%	294	-32.1%	234	-47.9%
	OCT	1,558	-14.9%	996	15.3%	201	-18.6%	292	-42.5%	247	-55.0%
	NOV	1,343	-13.6%	948	8.8%	170	19.7%	180	-52.9%	204	-50.6%
	DEC	1,395	-14.5%	939	9.8%	196	2.1%	206	-53.2%	201	-51.8%
2020	Average	1,560		970		220		303		274	
2021	JAN	1,359	-23.1%	898	-5.4%	190	-24.3%	242	-42.7%	210	-59.1%
	FEB	1,294	-19.1%	894	-4.1%	172	-5.0%	174	-52.3%	213	-47.9%
	MAR	1,513	-12.2%	960	-2.0%	232	19.0%	275	-32.3%	244	-47.2%
	APR	1,415	-2.7%	937	-2.4%	142	-7.2%	283	-15.3%	212	47.2%
	MAY	1,356	-6.1%	941	5.7%	170	-28.6%	209	-22.6%	187	14.7%
	JUN	1,393	-14.6%	944	-6.9%	167	-37.0%	244	-20.0%	201	-14.1%
	JUL	1,328	-14.7%	892	-12.0%	162	-35.5%	228	-10.2%	189	-19.2%
2021	Average to date	1,380		924		176		236		208	

NJ STATEWIDE
Families Receiving Emergency Assistance
JULY 2019 THROUGH JULY 2021



WFNJ/EA data is derived from NJ MMIS Shared Data Warehouse.
 Effective July 2013 this data query source was converted to the SDW.

* Effective Feb '11 Transitional Housing Payments were removed from 'Other EA Payments' and added to 'Shelter Payments'.

TABLE 9 : EMERGENCY ASSISTANCE (BY COUNTY) TOTAL NUMBER OF ELIGIBLE FAMILIES RECEIVING EMERGENCY ASSISTANCE PAYMENTS BY COUNTY (UNDUPLICATED CASES) FOR JULY 2021

County	TOTAL WFNJ/EA Families (Undupl)	% CHNG From JUL 20	Temp Rent Asst. Payments (Undupl)	Motel Housing Payments (Undupl)	Shelter/Transitional Housing Payments (Undupl)	Other WFNJ/EA Payments (Undupl)	SSI Receipts Receiving EA **
ATLANTIC	53	-41.1%	51	1	0	2	23
BERGEN	49	8.9% Δ	35	3	11	2	47
BURLINGTON	51	-40.7%	5	4	42	3	4
CAMDEN	44	-18.5%	20	10	12	3	38
CAPE MAY	18	-33.3%	6	12	0	0	9
CUMBERLAND	1	-75.0% *	0	0	0	1	1
ESSEX	131	-13.2%	48	0	74	13	7
GLOUCESTER	8	-60.0% *	6	0	1	1	1
HUDSON	206	19.8% Δ	175	7	16	37	82
HUNTERDON	8	-11.1%	8	0	0	1	10
MERCER	89	-16.8%	52	14	13	21	56
MIDDLESEX	134	-4.3%	92	31	7	26	42
MONMOUTH	18	38.5% Δ	0	2	17	2	43
MORRIS	10	-52.4%	6	2	0	3	11
OCEAN	98	-19.0%	77	19	0	19	18
PASSAIC	230	-11.5%	194	9	21	16	8
SALEM	2	0%	1	0	0	1	1
SOMERSET	68	-9.3%	58	5	1	21	73
SUSSEX	0	0%	0	0	0	0	3
UNION	99	-20.2%	51	40	12	14	106
WARREN	11	-66.7% *	7	3	1	3	1
NJ Total	1,328	-14.7%	892	162	228	189	584

Δ=higher caseload % change

*=lower caseload % change

** SSI-EA includes pay codes 22 and 24, data is derived from NJ Division of Family Development FAMIS Report #FM430-03A

WFNJ/EA data is derived from NJ MMIS Shared Data Warehouse.

Effective July 2013 this data query source was converted to the SDW.

Number WFNJ Families Receiving EA by County JULY 2021

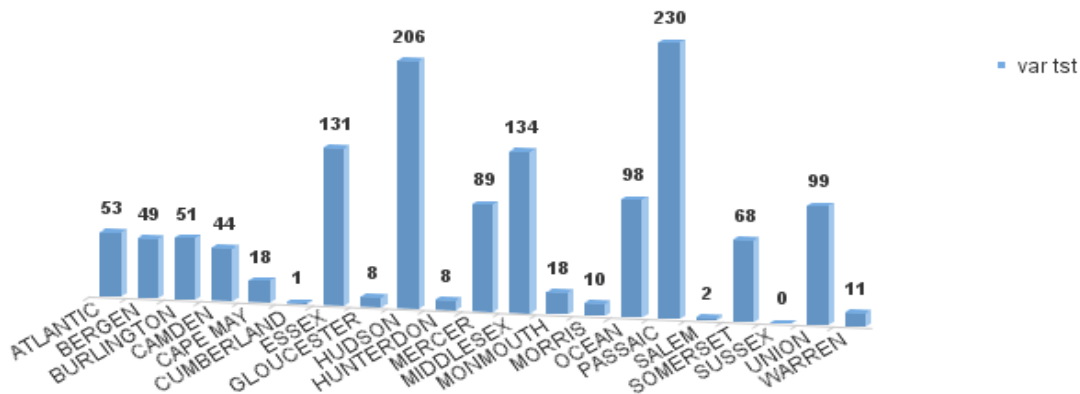
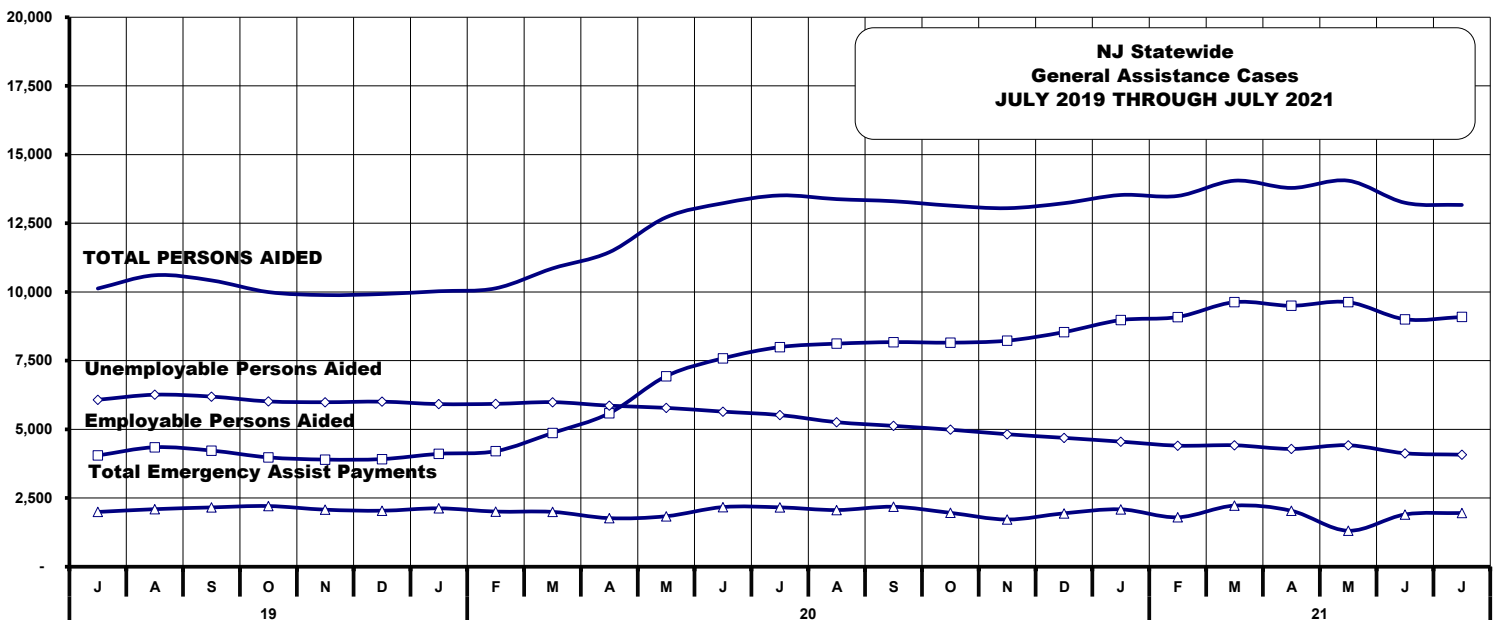


TABLE 10: GENERAL ASSISTANCE PROGRAM
NUMBER OF EMPLOYABLE AND UNEMPLOYABLE RECIPIENTS AND EMERGENCY ASSISTANCE PAYMENTS - STATEWIDE
JULY 2019 THROUGH JULY 2021

	Total Cases				Emergency Assistance Cases					
	Employable	% Chng (1 Yr)	Unemployable	% Chng (1 Yr)	Total	% Chng (1 Yr)	Temporary Assistance	Other GA-EA	Total	% Chng (1 Yr)
2019 JUL	4,050	-15.1%	6,077	-13.0%	10,127	-13.8%	912	1,082	1,994	-1.1%
AUG	4,348	-12.4%	6,261	-13.4%	10,609	-13.0%	885	1,210	2,095	4.5%
SEP	4,228	-5.5%	6,193	-9.4%	10,421	-7.9%	884	1,275	2,159	10.3%
OCT	3,980	-11.1%	6,017	-11.8%	9,997	-11.5%	890	1,319	2,209	11.1%
NOV	3,900	-9.6%	5,988	-9.9%	9,888	-9.8%	878	1,198	2,076	8.1%
DEC	3,918	-4.7%	6,008	-8.3%	9,925	-6.9%	900	1,139	2,039	8.5%
2019 AVERAGE	4,124		6,182		10,306		898	1,223	2,121	
2020 JAN	4,109	-2.5%	5,919	-8.3%	10,028	-6.0%	910	1,216	2,126	11.7%
FEB	4,206	0.1%	5,928	-6.0%	10,134	-3.6%	875	1,132	2,007	5.7%
MAR	4,868	15.5%	5,990	-4.5%	10,858	3.5%	919	1,077	1,996	0.8%
APR	5,587	32.2%	5,862	-6.2%	11,449	9.3%	913	855	1,768	-18.3%
MAY	6,936	66.9%	5,783	-6.9%	12,719	22.7%	929	909	1,838	-35.4%
JUN	7,585	87.4%	5,645	-8.2%	13,230	29.8%	916	1,255	2,171	4.1%
JUL	7,994	97.4%	5,520	-9.2%	13,514	33.4%	905	1,256	2,161	8.4%
AUG	8,119	86.7%	5,261	-16.0%	13,380	26.1%	875	1,188	2,063	-1.5%
SEP	8,176	93.4%	5,127	-17.2%	13,303	27.7%	849	1,333	2,182	1.1%
OCT	8,156	104.9%	4,988	-17.1%	13,144	31.5%	855	1,107	1,962	-11.2%
NOV	8,228	111.0%	4,822	-19.5%	13,050	32.0%	835	884	1,719	-17.2%
DEC	8,540	118.0%	4,691	-21.9%	13,231	33.3%	833	1,111	1,944	-4.7%
2020 AVERAGE	6,875		5,461		12,337		885	1,110	1,995	
2021 JAN	8,978	118.5%	4,553	-23.1%	13,531	34.9%	848	1,240	2,088	-1.8%
FEB	9,089	116.1%	4,407	-25.7%	13,496	33.2%	809	991	1,800	-10.3%
MAR	9,630	97.8%	4,421	-26.2%	14,051	29.4%	819	1,405	2,224	11.4%
APR	9,499	70.0%	4,288	-26.9%	13,787	20.4%	832	1,204	2,036	15.2%
MAY	9,630	38.8%	4,421	-23.6%	14,051	10.5%	819	491	1,310	-28.7%
JUN	9,007	18.7%	4,130	-32.8%	13,247	0.1%	794	1,108	1,902	-12.4%
JUL	9,090	13.7%	4,078	-26.1%	13,168	-2.6%	833	1,121	1,954	-9.6%
2021 AVERAGE TO DATE	9,275		4,328		13,619		822	1,080	1,902	



Source: NJ Division of Family Development, GA Fiscal Unit

TABLE 11: EMPLOYABLE AND UNEMPLOYABLE CASES AND EMERGENCY ASSISTANCE CASES RECEIVING PAYMENTS BY COUNTY JULY 2021

	Total Cases						Emergency Assistance Cases			
	Employable	% Chng (1 Yr)	Unemployable	% Chng (1 Yr)	Total	% Chng (1 Yr)	Temporary Rental Assistance	Other GA-EA	Total	% Chng (1 Yr)
ATLANTIC	769	10.6%	200	-24.8%	969	0.8%	75	22	97	-28.1%
BERGEN	312	-22.0%	189	-40.6%	501	-30.2%	78	28	106	-29.8%
BURLINGTON	335	-11.6%	211	-38.8%	546	-24.6%	21	85	106	-33.3%
CAMDEN	1,263	39.3%	462	-29.7%	1,725	10.3% Δ	55	104	159	-8.1%
CAPE MAY	82	-48.8%	42	-37.3%	124	-45.4% *	18	25	43	-32.8%
CUMBERLAND	299	7.6%	89	-48.6%	388	-14.0%	0	3	3	-72.7% *
ESSEX	960	7.7%	329	-25.7%	1,289	-3.4%	22	120	142	17.4%
GLOUCESTER	155	-45.0%	139	-26.1%	294	-37.4% *	2	29	31	-70.2% *
HUDSON	1,939	40.7%	537	-10.9%	2,476	25.0% Δ	102	98	200	66.7% Δ
HUNTERDON	71	-22.8%	45	-43.0%	116	-32.2% *	11	13	24	-29.4%
MERCER	394	37.3%	291	-22.6%	685	3.3%	52	42	94	2.2%
MIDDLESEX	425	14.9%	313	-11.3%	738	2.1%	92	120	212	36.8% Δ
MONMOUTH	218	15.3%	165	-18.3%	383	-2.0%	1	85	86	0.0%
MORRIS	138	1.5%	149	-12.4%	287	-6.2%	50	19	69	-18.8%
OCEAN	337	-3.7%	222	-19.9%	559	-10.8%	65	72	137	-10.5%
PASSAIC	448	29.5%	327	-28.4%	775	-3.5%	46	18	64	-37.9% *
SALEM	128	-4.5%	48	-29.4%	176	-12.9%	1	3	4	0.0%
SOMERSET	126	-28.0%	59	-16.9%	185	-24.8%	47	23	70	-23.9%
SUSSEX	54	-16.9%	23	-51.1%	77	-31.3%	0	19	19	35.7% Δ
UNION	511	10.4%	151	-39.8%	662	-7.3%	73	166	239	2.1%
WARREN	126	641.2%	87	-20.2%	213	69.0% Δ	22	27	49	-31.0%
NJ TOTAL	9,090	13.7%	4,078	-26.1%	13,168	-2.6%	833	1,121	1,954	-9.6%

 Δ = \uparrow Caseload %* = \downarrow Caseload %

Source: NJ Division of Family Development, GA Fiscal Unit

**TABLE 12:
OFFICE OF
CHILD SUPPORT
SERVICES**

**OFFICE OF CHILD SUPPORT SERVICES
QUARTERLY PERFORMANCE REPORT
STATE SUMMARY
TITLE IV-D SOURCE COLLECTION REPORT
Comparison of Quarter-3 (FFY 2020 vs. FFY 2021)**

COLLECTION SOURCE	TOTAL 4/1/2020 - 6/30/2020	% OF TOTAL COLLECTIONS	TOTAL 4/1/2021 - 6/30/2021	% OF TOTAL COLLECTIONS	DOLLAR CHANGE	% CHANGE
FEDERAL TAX	\$79,593,959	22.14%	\$26,914,603	8.34%	\$ (52,679,356)	-66.19%
STATE TAX	\$3,088,124	0.86%	\$3,024,509	0.94%	\$ (63,615)	-2.06%
UIB	\$27,887,771	7.76%	\$31,217,516	9.68%	\$ 3,329,745	11.94%
INC WITHHOLD	\$190,452,576	52.97%	\$188,440,986	58.42%	\$ (2,011,590)	-1.06%
FROM OTHER STATES	\$11,621,633	3.23%	\$12,916,085	4.00%	\$ 1,294,452	11.14%
ADMIN ENFORCEMENT	\$1,196,433	0.33%	\$6,297,192	0.02%	\$ 5,100,759	426.33%
OTHER	\$45,683,671	12.71%	\$53,729,487	16.66%	\$ 8,045,816	17.61%
TOTAL COLLECTIONS*	\$359,524,167	100%	\$322,540,378	100%	\$ (36,983,789)	-10.29%
DISBURSED COLLECTIONS**	\$311,551,004		\$278,577,027		\$ (32,973,977)	-10.58%

* Includes collections on both current support and arrears.

** Includes collections on both current support and arrears; also includes money sent to other states.

SOURCE: NJKiDS (Based on Federal Quarterly Report of Collections - OCSE-34A except Disbursed Collections)

Disbursed Collections obtained from Federal Data Report - OCSE-157, which is reported annually to Congress and used in the calculation of incentive dollars earned by each state.

**TABLE 13:
OFFICE OF
CHILD SUPPORT
SERVICES**

**OFFICE OF CHILD SUPPORT SERVICES
STATE SUMMARY
TITLE IV-D PATERNITY ESTABLISHMENT REPORT**
Comparison of July (FFY 2020 vs. FFY 2021)

County	JULY 2020			JULY 2021			Increase or Decrease (-) from FFY 2020 to FFY 2021
	Total Children Born Out of Wedlock*	Number of Paternities Established	Percent of Paternities Established	Total Children Born Out of Wedlock*	Number of Paternities Established	Percent of Paternities Established	
Atlantic	6,142	6,092	99.2%	5,680	5,651	99.5%	0.3%
Bergen	3,138	3,077	98.1%	2,825	2,785	98.6%	0.5%
Burlington	4,796	4,681	97.6%	4,401	4,293	97.5%	-0.1%
Camden	15,479	15,028	97.1%	14,294	13,936	97.5%	0.4%
Cape May	1,208	1,194	98.8%	1,091	1,082	99.2%	0.3%
Cumberland	6,458	6,397	99.1%	6,061	6,006	99.1%	0.0%
Essex	24,468	23,185	94.8%	21,998	20,969	95.3%	0.6%
Gloucester	4,241	4,184	98.7%	3,889	3,863	99.3%	0.7%
Hudson	9,873	9,454	95.8%	8,826	8,560	97.0%	1.2%
Hunterdon	252	252	100.0%	214	219	102.3%	2.3%
Mercer	6,849	6,666	97.3%	6,137	5,976	97.4%	0.0%
Middlesex	6,191	6,058	97.9%	5,685	5,542	97.5%	-0.4%
Monmouth	4,924	4,777	97.0%	4,412	4,294	97.3%	0.3%
Morris	1,254	1,243	99.1%	1,109	1,096	98.8%	-0.3%
Ocean	4,729	4,603	97.3%	4,349	4,239	97.5%	0.1%
Passaic	10,064	9,675	96.1%	8,976	8,693	96.8%	0.7%
Salem	2,639	2,558	96.9%	2,471	2,380	96.3%	-0.6%
Somerset	1,372	1,344	98.0%	1,219	1,192	97.8%	-0.2%
Sussex	508	504	99.2%	449	448	99.8%	0.6%
Union	9,930	9,500	95.7%	9,231	8,859	96.0%	0.3%
Warren	891	900	101.0%	791	796	100.6%	-0.4%
NJ TOTALS	125,406	121,372	96.8%	114,108	110,879	97.2%	0.4%

SOURCE: NJKiDS (Based on Federal Performance Measures - OCSE-157)

* Information on Out of Wedlock Births obtained from NJ Bureau of Vital Statistics

**TABLE 14:
OFFICE OF
CHILD SUPPORT
SERVICES**

**OFFICE OF CHILD SUPPORT SERVICES
STATE SUMMARY
TITLE IV-D REPORT OF CASES WITH ORDERS**
Comparison of July (FFY 2020 vs. FFY 2021)

County	JULY 2020			JULY 2021			Increase or Decrease (-) from FFY 2020 to FFY 2021
	Total Cases	Cases with Orders	% of Cases with Orders	Total Cases	Cases with Orders	% of Cases with Orders	
Atlantic	11,235	10,324	91.9%	10,414	9,738	93.5%	1.6%
Bergen	11,314	11,049	97.7%	10,634	10,405	97.8%	0.2%
Burlington	12,294	11,591	94.3%	11,533	10,997	95.4%	1.1%
Camden	27,379	25,636	93.6%	25,715	24,587	95.6%	2.0%
Cape May	2,870	2,684	93.5%	2,674	2,546	95.2%	1.7%
Cumberland	11,388	10,964	96.3%	10,827	10,436	96.4%	0.1%
Essex	40,072	34,002	84.9%	36,031	31,904	88.5%	3.7%
Gloucester	9,841	9,486	96.4%	9,257	8,957	96.8%	0.4%
Hudson	19,309	17,251	89.3%	17,660	16,079	91.0%	1.7%
Hunterdon	1,359	1,277	94.0%	1,271	1,194	93.9%	0.0%
Mercer	12,895	11,716	90.9%	11,771	10,875	92.4%	1.5%
Middlesex	16,457	15,471	94.0%	15,376	14,537	94.5%	0.5%
Monmouth	12,919	12,378	95.8%	11,853	11,388	96.1%	0.3%
Morris	5,511	5,390	97.8%	5,189	5,070	97.7%	-0.1%
Ocean	13,928	13,408	96.3%	12,985	12,590	97.0%	0.7%
Passaic	19,255	16,127	83.8%	17,136	15,279	89.2%	5.4%
Salem	4,060	3,898	96.0%	3,772	3,615	95.8%	-0.2%
Somerset	4,401	4,157	94.5%	3,994	3,809	95.4%	0.9%
Sussex	2,493	2,443	98.0%	2,307	2,284	99.0%	1.0%
Union	17,299	16,481	95.3%	16,375	15,702	95.9%	0.6%
Warren	2,807	2,631	93.7%	2,584	2,475	95.8%	2.1%
NJ TOTALS	259,086	238,364	92.0%	239,358	224,467	93.8%	1.8%

SOURCE: NJKiDS (Based on Federal Performance Measures - OCSE-157)

**TABLE 15:
OFFICE OF
CHILD SUPPORT
SERVICES**

**OFFICE OF CHILD SUPPORT SERVICES
STATE SUMMARY
TITLE IV-D COLLECTIONS ON CURRENT SUPPORT**
Comparison of July (FFY 2020 vs. FFY 2021)

County	JULY 2020			JULY 2021			Increase or Decrease (-) from FFY 2020 to FFY 2021
	Total Current Support Due	Total Current Support Distributed	Total Collection Rate	Total Current Support Due	Total Current Support Distributed	Total Collection Rate	
Atlantic	\$3,737,462	\$2,506,571	67.1%	\$3,510,275	\$2,348,947	66.9%	-0.1%
Bergen	\$8,252,303	\$6,296,932	76.3%	\$7,633,319	\$5,869,631	76.9%	0.6%
Burlington	\$5,628,089	\$3,979,002	70.7%	\$5,176,246	\$3,695,107	71.4%	0.7%
Camden	\$7,953,186	\$4,962,491	62.4%	\$7,489,489	\$4,687,936	62.6%	0.2%
Cape May	\$1,108,247	\$779,383	70.3%	\$1,029,968	\$724,718	70.4%	0.0%
Cumberland	\$3,084,581	\$1,869,674	60.6%	\$2,863,997	\$1,754,868	61.3%	0.7%
Essex	\$10,740,676	\$6,594,599	61.4%	\$9,833,842	\$6,103,666	62.1%	0.7%
Gloucester	\$4,218,376	\$2,858,330	67.8%	\$3,905,172	\$2,672,340	68.4%	0.7%
Hudson	\$7,222,769	\$4,978,068	68.9%	\$6,746,966	\$4,653,996	69.0%	0.1%
Hunterdon	\$1,214,651	\$982,886	80.9%	\$1,108,750	\$918,253	82.8%	1.9%
Mercer	\$4,059,340	\$2,590,650	63.8%	\$3,674,391	\$2,429,317	66.1%	2.3%
Middlesex	\$7,574,970	\$5,357,440	70.7%	\$6,919,454	\$4,915,232	71.0%	0.3%
Monmouth	\$7,152,585	\$5,358,268	74.9%	\$6,464,561	\$4,851,447	75.0%	0.1%
Morris	\$4,328,134	\$3,272,111	75.6%	\$3,963,002	\$2,988,211	75.4%	-0.2%
Ocean	\$6,459,349	\$4,730,782	73.2%	\$5,969,535	\$4,429,139	74.2%	1.0%
Passaic	\$6,502,798	\$4,269,713	65.7%	\$6,007,923	\$3,922,127	65.3%	-0.4%
Salem	\$1,118,709	\$674,271	60.3%	\$1,041,234	\$637,565	61.2%	1.0%
Somerset	\$3,040,878	\$2,471,223	81.3%	\$2,729,029	\$2,291,939	84.0%	2.7%
Sussex	\$1,766,004	\$1,366,424	77.4%	\$1,618,741	\$1,260,401	77.9%	0.5%
Union	\$6,815,116	\$4,764,418	69.9%	\$6,369,756	\$4,522,120	71.0%	1.1%
Warren	\$1,286,696	\$937,391	72.9%	\$1,153,423	\$852,785	73.9%	1.1%
NJ TOTALS	\$103,264,916	\$71,600,627	69.3%	\$95,209,074	\$66,529,748	69.9%	0.5%

SOURCE: NJKiDS (Based on Federal Performance Measures - OCSE-157)

**TABLE 16:
OFFICE OF
CHILD SUPPORT
SERVICES**

**OFFICE OF CHILD SUPPORT SERVICES
STATE SUMMARY
TITLE IV-D CASES ARREARS COLLECTION REPORT**

Comparison of July (FFY 2020 vs. FFY 2021)

County	JULY 2020			JULY 2021			Increase or Decrease (-) from FFY 2020 to FFY 2021
	Total Cases with Arrears	Total Amount Collected	Average Arrears Collection per Case	Total Cases with Arrears	Total Amount Collected	Average Arrears Collection per Case	
Atlantic	6,707	\$765,973	\$114.21	6,369	\$867,657	\$136.23	\$22.03
Bergen	7,011	\$1,192,024	\$170.02	6,530	\$1,452,391	\$222.42	\$52.40
Burlington	7,587	\$1,013,717	\$133.61	7,148	\$1,010,921	\$141.43	\$7.81
Camden	15,704	\$1,590,614	\$101.29	14,968	\$1,852,797	\$123.78	\$22.50
Cape May	1,813	\$170,764	\$94.19	1,695	\$233,446	\$137.73	\$43.54
Cumberland	6,896	\$607,595	\$88.11	6,563	\$706,666	\$107.67	\$19.57
Essex	21,097	\$2,561,468	\$121.41	19,726	\$2,890,255	\$146.52	\$25.11
Gloucester	6,251	\$729,306	\$116.67	5,855	\$774,163	\$132.22	\$15.55
Hudson	11,456	\$1,359,880	\$118.70	10,547	\$1,460,078	\$138.44	\$19.73
Hunterdon	759	\$144,415	\$190.27	720	\$151,675	\$210.66	\$20.39
Mercer	7,733	\$969,897	\$125.42	7,248	\$1,035,735	\$142.90	\$17.48
Middlesex	10,096	\$1,305,999	\$129.36	9,400	\$1,487,377	\$158.23	\$28.87
Monmouth	8,015	\$1,387,914	\$173.16	7,248	\$1,201,028	\$165.70	-\$7.46
Morris	3,518	\$549,447	\$156.18	3,278	\$637,191	\$194.38	\$38.20
Ocean	8,396	\$1,154,881	\$137.55	7,777	\$1,149,429	\$147.80	\$10.25
Passaic	10,757	\$1,268,126	\$117.89	10,147	\$1,374,012	\$135.41	\$17.52
Salem	2,382	\$245,491	\$103.06	2,240	\$244,189	\$109.01	\$5.95
Somerset	2,673	\$428,827	\$160.43	2,391	\$368,357	\$154.06	-\$6.37
Sussex	1,581	\$263,990	\$166.98	1,456	\$349,933	\$240.34	\$73.36
Union	10,581	\$1,431,950	\$135.33	9,877	\$1,571,019	\$159.06	\$23.73
Warren	1,653	\$222,301	\$134.48	1,525	\$237,362	\$155.65	\$21.16
NJ TOTALS	152,666	\$19,364,579	\$126.84	142,708	\$21,055,681	\$147.54	\$20.70

SOURCE: OCSE-157 Child Support Enforcement Annual Data Report

Table 17 WORK FIRST NEW JERSEY STATISTICAL SUMMARY**WFNJ****JULY 2021**

COUNTY	EMPLOYMENT DIRECTED ACTIVITIES		JOB SEARCH	EMPLOYED OPEN (WFNJ RECIPIENT)	SUPPORT SERVICES ON ACTIVE CASE		CLOSED FOR EMPLOYMENT THIS MONTH	POST ASSISTANCE CHILD CARE
	CWEP	ALL OTHER TRAINING			CHILD CARE	TRAINING REL. EXPENSES		
ATLANTIC	0	21	4	21	4	33	1	20
BERGEN	0	3	0	2	14	0	0	7
BURLINGTON	0	7	0	1	6	0	1	17
CAMDEN	21	124	0	21	29	0	9	21
CAPE MAY	0	0	0	3	2	1	0	6
CUMBERLAND	0	23	0	9	1	4	4	2
ESSEX	27	141	0	60	44	34	20	42
GLOUCESTER	0	3	0	8	4	0	0	6
HUDSON	13	160	2	44	47	7	8	21
HUNTERDON	0	0	0	1	2	0	0	0
MERCER	22	38	0	22	44	6	3	33
MIDDLESEX	0	26	0	14	3	0	2	32
MONMOUTH	0	10	1	10	13	1	0	21
MORRIS	0	7	0	3	2	0	0	5
OCEAN	0	14	1	6	10	0	1	18
PASSAIC	2	26	1	15	32	8	9	6
SALEM	0	10	0	0	2	0	0	0
SOMERSET	0	4	0	7	11	2	2	9
SUSSEX	0	2	0	0	1	0	1	1
UNION	0	46	0	6	12	2	2	4
WARREN	0	16	0	1	6	0	2	0
STATE TOTAL	85	681	9	254	289	98	65	271

**DIVISION OF FAMILY DEVELOPMENT CURRENT PROGRAM STATISTICS
JULY 2021**

ACRONYMS

EMERGENCY ASSISTANCE (EA) - Payments to those eligible for WFNJ/TANF or WFNJ/GA, authorized during the 30 consecutive days immediately following the emergency (defined as a substantial loss of shelter, food, clothing, or household furnishings by fire, flood or other similar disaster) or if eligible individual or family is in an imminent or actual state of homelessness.

NJ SNAP - Formerly the Food Stamp Program, now known as NJ SNAP (NJ Supplemental Nutrition Assistance Program) authorized by Congress as a nutritional supplement program to provide low income households with more food of greater variety and better nutrition. Program eligibility is based on household income, resources, and expenses for medical, shelter, and dependent care. CWA staff refers certain recipients to the New Jersey Department of Labor for participation in the Food Stamp Employment

FAMIS: Family Assistance Management Information System

GAAS: General Assistance Automated System

NJKiDS: New Jersey Kids Deserve Support (Child Support Information Management System)

NJ MMIS SHARED DATA WAREHOUSE: The Shared Data Warehouse (SDW) is the repository for New Jersey's DFD and Medicaid data. Since 2003, OptumInsight has administered the SDW and provided access to the data through a reporting tool known as Business Objects.

OMEGA: Online Management of Economic Goal Achievement

SSI-EA: Supplemental Security Income-Emergency Assistance

WFNJ: Work First New Jersey - Fully implemented July 1, 1997, this is New Jersey's welfare reform program which responds to the requirements of the Federal Personal Responsibility and Work Opportunity Reconciliation Act (**PRWORA**) of 1996. PRWORA established Temporary Assistance for Needy Families (**TANF**) as the replacement for AFDC cash assistance. WFNJ includes two segments, **WFNJ/TANF** for families with children, and **WFNJ/GA** (General Assistance) for single adults and couples without dependent children. WFNJ emphasizes achieving self-sufficiency and limits lifetime

**DIVISION OF FAMILY DEVELOPMENT CURRENT PROGRAM STATISTICS
JULY 2021**

EXPLANATORY NOTES

The Department of Human Services Division of Family Development provides basic income and an opportunity to achieve self-sufficiency for individuals and families served by the Division's programs. The Division provides leadership, direction and supervision to those public agencies responsible for administering those programs and plans for and develops policies to promote self-sufficiency.

WFNJ STATISTICAL SUMMARY (TABLE 17)

Employment Directed Activities (EDA) - From Activities Summary Report (OMEGA report # RM064). Unduplicated count of persons participating in Community Work Experience Program (CWEP), All Other Training, or Job Search.

Number of Persons Employed This Month, Still Receiving TANF - Individuals with open "empl" activity on OMEGA. Ad hoc report.

Participants Receiving Child Care Services - From Issuance Disbursement Summary (OMEGA report # RM703). Total number of active participants who show receipt of Child Care.

Number of Persons Closed on FAMIS Due to Employment - From FAMIS report #5549-RM-2

Post TANF and Receiving Child Care - Persons no longer in receipt of TANF but still receiving child care. From Share Data Warehouse Child Care case count based on Child Care payments (SDW report WR00022WZ_CC).