



St. Joseph's University Medical Center

📍 Regional Perinatal Center at 703 Main St, Paterson, NJ, 07503

🌐 [Facility website](#)

Side-by-Side Hospital View

- ⊘ Recognition as Baby-Friendly Hospital i
- ✔ Lactation Consultants Available i
- ✔ Midwives Available i
- ✔ Implementation of AIM Bundle(s) i
- ✔ SCN and/or NICU Available i
- ✔ Neonatologist/Perinatologist Available i
- Nurse to Patient Ratio: **1 to 3.9** i

Selected Metrics

Birthing Person Characteristics

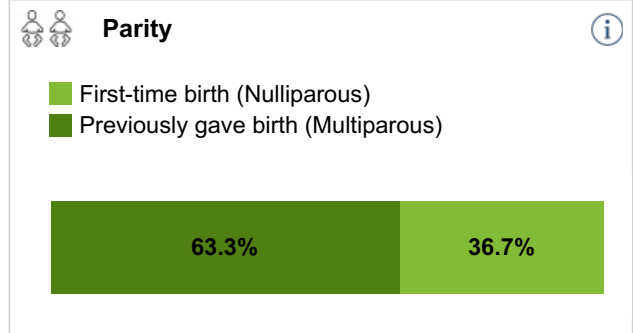
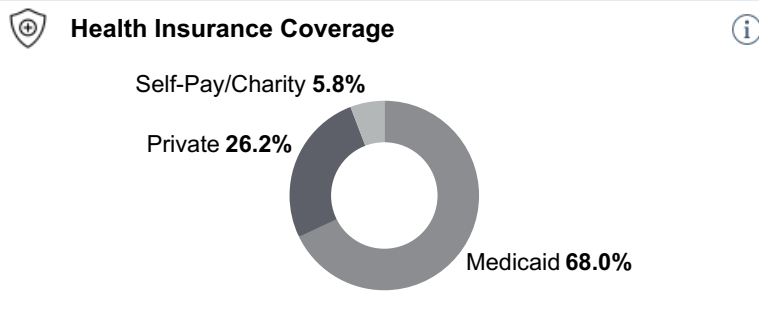
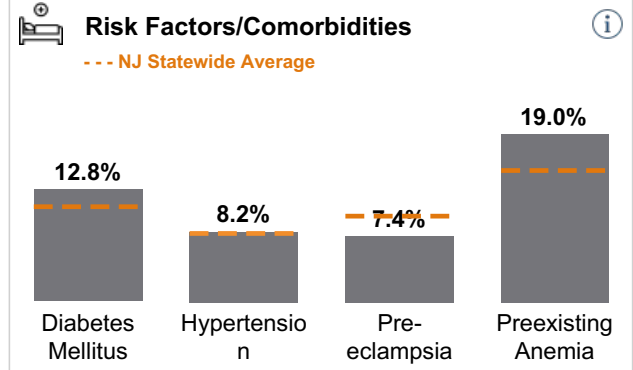
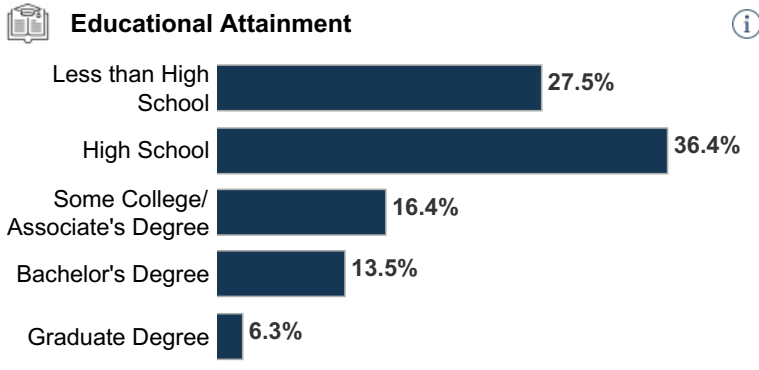
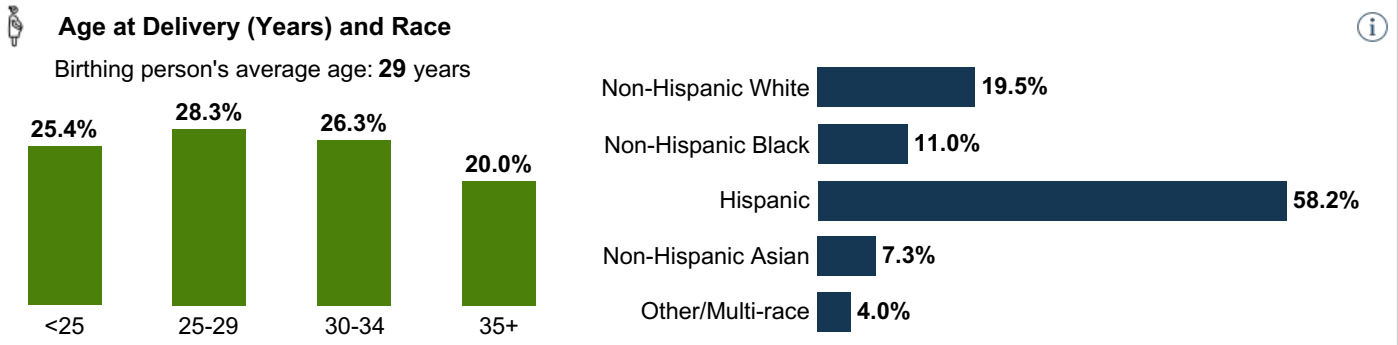
Newborn Characteristics

Delivery Methods & Procedures

Delivery Complications

Year 2018

Total number of delivery hospitalizations: **3,302**



Disclaimer: The NJ Department of Health does not endorse any particular hospital, and strongly suggests that you discuss your specific health care needs with your health care provider. **Date last updated:** 1/15/2026