

NEW JERSEY NEW JERSEY NEW JERSEY NEW JERSEY NEW JERSEY
NEW JERSEY NEW JERSEY NEW JERSEY NEW JERSEY NEW JERSEY
NEW JERSEY NEW JERSEY NEW JERSEY NEW JERSEY NEW JERSEY
NEW JERSEY NEW JERSEY NEW JERSEY NEW JERSEY NEW JERSEY
NEW JERSEY NEW JERSEY NEW JERSEY NEW JERSEY NEW JERSEY
NEW JERSEY NEW JERSEY NEW JERSEY NEW JERSEY NEW JERSEY
NEW JERSEY NEW JERSEY NEW JERSEY NEW JERSEY NEW JERSEY

Hospital Performance Report

2
0
0
7



Jon S. Corzine
Governor



Fred M. Jacobs, M.D., J.D.
Commissioner

A Message . . .



From the Governor

Dear Friends:

The fourth edition of the hospital quality report, the ***New Jersey 2007 Hospital Performance Report***, demonstrates New Jersey hospitals' firm commitment to improve the delivery of health care treatment to their patients. For the fourth year in a row, rates on how often each New Jersey hospital uses commonly accepted best practices to treat patients with specific conditions have continued to climb upward. I applaud their efforts and successes to implement effective strategies for improving health care quality.

The report also reflects an important objective of my administration, to improve the quality of health care delivery for all New Jersey patients. While providing information that encourages the consumer to take an active role in their own health care, the report also holds hospitals accountable for their performance by publicly reporting their scores. In addition, the report stimulates healthy competition among hospitals to produce better scores and better quality services.

The common goal to achieve excellence in health care has fostered a cooperative effort among New Jersey hospitals and the New Jersey State Government. Thus far, this partnership has produced great results. We hope to maintain this relationship and to continue to provide valuable resources that help consumers make informed healthcare choices.

Jon S. Corzine
Governor

For additional copies of this report, please contact the Office of the Commissioner, Health Care Quality Assessment, New Jersey Department of Health and Senior Services, P.O. Box 360, Trenton, New Jersey 08625-0360; call (800) 418-1397.

Explore our website at www.nj.gov/health/hpr, and choose which hospitals you want to compare.

Portions of this report rely on materials developed by the US Department of Health and Human Services, Centers for Medicare and Medicaid Services, and the Agency for Healthcare Research and Quality.



From the Commissioner

Dear Consumers:

Over the last few years, New Jersey hospitals have demonstrated considerable improvement in providing quality care to their patients. These improvements are in no small measure attributable to making quality health care information available to the public. It is with great pride that I present the ***New Jersey 2007 Hospital Performance Report***, the Department's fourth annual report on hospital quality, and the main vehicle in publishing performance measures for New Jersey hospitals on their treatment of patients with certain conditions. In addition to including measures for heart attacks, pneumonia, and congestive heart failure, we have expanded this year's report to include measures for preventing surgical infections.

With today's consumers more involved than ever in making their own healthcare decisions, information is needed to select the best hospitals. This report is just one of the many tools that can assist in making these important decisions. In addition to providing hospital scores for the treatment measures, the report lists questions to ask health care professionals and hospitals when facing a hospital stay, where to file complaints, your rights as an inpatient, and a brief background for the four conditions being measured.

The report is also intended to encourage hospital accountability for improving quality. It allows hospitals to compare their own performance to other New Jersey hospitals and makes hospitals answerable to the public.

I would like to thank the Quality Improvement Advisory Committee (QIAC) for their contribution to the report and other quality initiatives. QIAC was established to assist the Department in developing a hospital performance measurement and assessment system. Members represent leaders from different professions, such as physicians, nurses, the New Jersey hospital industry, insurers and other payors, and universities. QIAC's continuous support has helped make New Jersey a national leader in the quest for better health care.

Be sure to visit our interactive web site, www.nj.gov/health/hpr. You can choose the hospitals you want to compare by region or county. You will also find additional consumer and professional health information not included in the hard copy report.

The report provides information that both consumers and hospitals can use, which, we hope, will foster more awareness and improvements in quality health care. We trust that you will make good use of it. Comments may be directed to us by email at hospital.quality@doh.state.nj.us.

Fred M. Jacobs, M.D., J.D.
Commissioner
Department of Health and Senior Services

Contents

2-3	Hospital Quality and Using This Report How to use this report	16	Basic Facts on Surgical Infection Prevention Reviews the treatment measures in this report and gives health information
4-5	Overall Scores Heart Attack, Pneumonia, Surgical Infection Prevention and Congestive Heart Failure	17	Tips for Safer Surgery Gives questions to ask before surgery
6-7	Heart Attack Treatment Scores <ul style="list-style-type: none">❖ Overall heart attack score❖ Aspirin at arrival❖ Aspirin at discharge❖ Beta blocker at arrival❖ Beta blocker at discharge❖ ACE Inhibitor or ARB at discharge❖ Smoking cessation advice❖ PCI within time lines	18-19	Congestive Heart Failure Treatment Scores <ul style="list-style-type: none">❖ Overall congestive heart failure score❖ Left ventricular systolic function assessment❖ ACE Inhibitor or ARB at discharge❖ Discharge instructions❖ Smoking cessation advice
8-9	Basic Facts on Treatment for Heart Attacks Reviews the treatment measures in this report and gives health care information	20	Basic Facts on Treatment for Congestive Heart Failure Reviews the treatment measures in this report and gives health care information
10-11	Pneumonia Treatment Scores <ul style="list-style-type: none">❖ Overall pneumonia score❖ Oxygenation assessment❖ Pneumonia vaccination screening❖ Antibiotic timing❖ Antibiotic selection❖ Blood culture before initial antibiotic❖ Smoking cessation advice	21	Hospital Quality Oversight Reviews oversight activities
12-13	Basic Facts on Treatment for Pneumonia Reviews the treatment measures in this report and gives health care information	22-23	Taking an Active Role in Your Health Care Reviews patient responsibilities in maintaining health including understanding treatment options
14-15	Surgical Infection Prevention Scores <ul style="list-style-type: none">❖ Overall surgical infection prevention score❖ Preventive antibiotic started❖ Preventive antibiotic stopped	24-25	Hospital Patients...Know Your Rights Reviews patient rights in New Jersey
		26-27	Health Information and Referral Provides health care resources
		28	To File a Complaint... How to file a hospital complaint
		29	Appendix One Quality Improvement Advisory Committee
		30	Appendix Two NJ General Acute Care Hospitals

Hospital Quality and Using This Report

The *New Jersey Hospital Performance Report* was created to provide hospital quality information to patients, their families, and health care professionals. The information is designed to help you choose a hospital and make other decisions about your health care.

The report shows how each hospital treats eligible patients with a heart attack, pneumonia, or congestive heart failure or who are having surgery. Patients must receive the correct care in order to fully recover. These measures are based on recognized national standards for diagnosis and treatment.

Q What do the hospital scores mean?

A The report includes four Overall Scores for how each hospital treats patients diagnosed with heart attack, pneumonia or congestive heart failure or patients having surgery. The Overall Scores are shown on pages 4 and 5. Scores for individual measures are provided on the following pages.

The score for each measure reflects the percentage of eligible patients who received the correct treatment. For example, an 85% rate means that the hospital provided the recommended care for 85% of the eligible patients. The goal for each measure is 100% compliance, so that all patients receive the best care. Patients who should not receive the treatments due to their specific conditions are excluded from the measures. Small differences in hospital scores do not indicate real differences in hospital quality.



Q Which hospitals are included?

A All New Jersey general acute care hospitals are included, along with one specialty hospital that treats heart disease.

Q How is the information collected?

A The information is collected by hospitals through looking at patient medical records. This review shows whether a patient received the correct care. The Centers for Medicare and Medicaid Services (CMS) reviews the consistency of each hospital's data. All New Jersey hospitals passed this review. To learn more about the data collection methods and the CMS audit process, see the technical report at www.nj.gov/health/hpr.

Q If doctors make decisions on where a patient should get care, why should I study hospital performance?

A Many consumers want a doctor's recommendation on hospitals. Frequently, people collect as much information as possible to make informed decisions. This report will provide some of that information.

Many people choose doctors according to their doctor's hospital affiliation. A doctor must have privileges at a hospital to admit patients. Your doctor may admit to several hospitals. If you are enrolled in a managed care plan, use this report to help review your hospital network. Managed care insurers usually offer several choices of hospitals in an area.

Q Aren't all doctors and hospitals the same?

A No. Hospitals differ in their specialties and expertise. Some are better equipped than others to handle different conditions and levels of care. Not all hospitals have state approval to perform certain services. Hospitals employ doctors with different specialties, expertise and abilities. These differences will influence the quality of the care that you receive.

Q Why should I care about quality?

A Hospitals differ in how well they provide appropriate care to patients. The quality of the care provided by your doctor and hospital may influence your health.

Q Can I use this information to draw conclusions about New Jersey hospitals?

A This report is not intended to be used alone. It is designed to provide important information to help you make informed decisions. Use this report in conjunction with other information in making decisions about hospitals.

Q What should I do with the information I learn from this report?

A Ask your doctor questions. Be informed. Use this report to gather more information and make informed decisions about which hospital is most appropriate for your health care needs.

WHY FOCUS ON HEART ATTACK, PNEUMONIA, SURGICAL INFECTIONS AND CONGESTIVE HEART FAILURE?

Conditions	National Importance	Treatments Covered in this Report
Heart Attack or Acute Myocardial Infarction (AMI)	Leads to approximately 500,000 deaths and affects 1.2 million people each year.	<ul style="list-style-type: none">• Aspirin at Arrival• Aspirin at Discharge• Beta Blocker at Arrival• Beta Blocker at Discharge• ACE Inhibitor/ARB at Discharge• Smoking Cessation Advice• PCI within Time Lines
Pneumonia	Accounts for 1 million admissions to hospitals, 4 million episodes of illness, and a major cause of death each year.	<ul style="list-style-type: none">• Oxygenation Assessment• Pneumonia Vaccination Screening• Antibiotic Timing• Antibiotic Selection• Blood Culture before Initial Antibiotic• Smoking Cessation Advice
Surgical Infections	Accounts for 40% of all hospital-acquired infections among surgical patients.	<ul style="list-style-type: none">• Preventive Antibiotic Started• Preventive Antibiotic Stopped
Congestive Heart Failure (CHF)	Results in about 1 million annual hospital admissions and is growing rapidly; the most common reason for admission for patients 65 and older.	<ul style="list-style-type: none">• Left Ventricular Systolic (LVS) Assessment• ACE Inhibitor/ARB at Discharge• Discharge Instructions• Smoking Cessation Advice

Overall Scores: Heart Attack, Pneumonia, Surgical Infection Prevention & Congestive Heart Failure

Region/County	Hospital Name	Heart Attack %	Pneumonia %	Surgical Infection Prevention %	Congestive Heart Failure %
Top 10% of hospitals scored at or higher than:		99	96	95	98
Top 50% of hospitals scored at or higher than:		96	92	88	91
NORTHWEST					
Sussex	Newton Memorial Hospital	99	94	96	94
	St. Clare's Hospital-Sussex	98	95	97	98
Warren	Hackettstown Regional Medical Center	88	95	87	88
	Warren Hospital	97	93	89	93
NORTHEAST					
Bergen	Bergen Regional Medical Center	81	88	56*	76
	Englewood Hospital and Medical Center	97	92	83	86
	Hackensack University Medical Center	99	98	93	96
	Holy Name Hospital	94	85	81	84
	Pascack Valley Hospital	91	89	89	71
	Valley Hospital	96	94	95	84
Essex	Cathedral-St. James Hospital	90	89	77	94
	Cathedral-St. Michael's Medical Center	90	88	84	87
	Clara Maass Medical Center	98	97	95	99
	Columbus Hospital	96	96	99	95
	East Orange General Hospital	94	92	77	82
	Mountainside Hospital	92	89	86	86
	Newark Beth Israel Medical Center	95	87	93	98
	St. Barnabas Medical Center	98	90	87	97
	UMDNJ-University Hospital	96	85	79	95
Hudson	Bayonne Medical Center	99	82	51	92
	Christ Hospital	87	89	75	76
	Greenville Hospital	76	94	40	97
	Hoboken University Medical Center	97	92	91	86
	Jersey City Medical Center	89	89	83	91
	Meadowlands Hospital Medical Center	98	92	76	91
	Palisades Medical Center of New York	100	88	64	98
Morris	Chilton Memorial Hospital	98	91	88	92
	Morristown Memorial Hospital	98	93	88	93
	St. Clare's Hospital-Denville	98	97	98	97
	St. Clare's Hospital-Dover	99	96	96	98
Passaic	Barnert Hospital	81	92	91	83
	St. Joseph's Hospital and Medical Center	97	90	90	93
	St. Joseph's Wayne Hospital	95	91	94	84
	St. Mary's Hospital (Passaic)	83	88	61	73
Union	Muhlenberg Regional Medical Center	93	95	90	82
	Overlook Hospital	95	95	93	92
	RWJ University Hospital at Rahway	96	91	93	91
	Trinitas Hospital	91	92	87	82
	Union Hospital	96	93	92	88

This information summarizes hospital performance on treating heart attacks, pneumonia, congestive heart failure and surgical patients in 2006. The Overall Score is a composite of all measures for the specific condition and is the percent of time that a hospital gave patients the correct treatment. Hospitals are presented alphabetically by region and county.

Region/County	Hospital Name	Heart Attack %	Pneumonia %	Surgical Infection Prevention %	Congestive Heart Failure %
CENTRAL					
Hunterdon	Hunterdon Medical Center	98	95	91	95
Mercer	Capital Health System at Fuld	94	87	78	82
	Capital Health System at Mercer	97	87	85	86
	RWJ University Hospital at Hamilton	92	91	91	87
	St. Francis Medical Center	94	88	83	87
	University Medical Center at Princeton	96	96	91	94
Middlesex	JFK Medical Center	91	94	85	86
	Raritan Bay Medical Center-Old Bridge	86	94	72	84
	Raritan Bay Medical Center-Perth Amboy	94	92	84	90
	Robert Wood Johnson University Hospital	98	92	88	84
	St. Peter's University Hospital	98	91	95	94
Monmouth	Bayshore Community Hospital	83	89	86	82
	CentraState Medical Center	92	90	78	74
	Jersey Shore University Medical Center	99	92	93	97
	Monmouth Medical Center	93	92	89	96
	Riverview Medical Center	99	94	90	96
Ocean	Community Medical Center	94	89	86	78
	Kimball Medical Center	93	94	91	95
	Ocean Medical Center	98	92	95	96
	Southern Ocean County Hospital	96	90	80	91
Somerset	Somerset Medical Center	97	94	89	98
SOUTH					
Atlantic	AtlantiCare Regional Medical Center-City	100	98	84	100
	AtlantiCare Regional Medical Center-Mainland	99	96	94	96
	Shore Memorial Hospital	91	93	86	83
	William B. Kessler Memorial Hospital	86	90	51	81
Burlington	Deborah Heart and Lung Center	99	79	98	99
	Lourdes Medical Center of Burlington County	92	84	86	80
	Virtua-Memorial Hospital Burlington County	96	93	92	94
	Virtua-West Jersey Hospital Marlton	96	93	90	93
Camden	Cooper Hospital/University Medical Center	98	93	91	95
	Kennedy Mem. Hospitals UMC-Cherry Hill	98	93	94	86
	Kennedy Mem. Hospitals UMC-Stratford	97	96	94	81
	Our Lady of Lourdes Medical Center	97	90	91	90
	Virtua-West Jersey Hospital Berlin	97	96	70	98
	Virtua-West Jersey Hospital Voorhees	97	89	88	94
Cape May	Cape Regional Medical Center	91	89	85	84
Cumberland	South Jersey Healthcare Regional Medical Ctr.	97	91	76	91
Gloucester	Kennedy Mem. Hospitals UMC-Wash. Twp.	96	93	94	84
	Underwood-Memorial Hospital	96	87	84	88
Salem	Memorial Hospital of Salem County	91	91	71	87
	South Jersey Hospital-Elmer	96	95	86	97

* Indicates that the hospital had a small number of patients (less than 25) for this measure.

Heart Attack Treatment Scores

Hospital Name	Overall Score %	Aspirin Arrival %	Aspirin Discharge %	Beta Blocker Arrival %	Beta Blocker Discharge %	ACEI/ARB Discharge %	Smoking Cessation Advice %	PCI within Time Lines ¹ %
Top 10% of hospitals scored at or higher than:	99	100	100	100	100	100	100	82
Top 50% of hospitals scored at or higher than:	96	98	96	97	98	89	100	50
AtlantiCare Regional Medical Center-City	100	100	100*	100	100	100*	100*	NA
Palisades Medical Center of New York	100	100	97	100	100	100*	100*	NA
Deborah Heart and Lung Center	99	100*	100	100*	99	98	100	50*
Riverview Medical Center	99	100	100	100	100	100*	100*	82*
Jersey Shore University Medical Center	99	99	100	99	100	100	100	83
Hackensack University Medical Center	99	100	100	100	100	98	100	74
St. Clare's Hospital-Dover	99	100	100*	100	96*	100*	100*	NA
Newton Memorial Hospital	99	100	100*	97	100*	100*	100*	NA
Bayonne Medical Center	99	100	100	100	100	100*	100*	56*
AtlantiCare Regional Medical Center-Mainland	99	99	99	99	100	100	100	44*
St. Clare's Hospital-Denville	98	99	100	100	99	95*	100	71*
Cooper Hospital/University Medical Center	98	99	98	98	99	97	100	29*
Clara Maass Medical Center	98	99	100	98	100	100*	100*	60*
Chilton Memorial Hospital	98	100	97	99	99	96*	96	91*
Kennedy Mem. Hospitals UMC-Cherry Hill	98	100	96	100	98	89*	67*	NA
St. Barnabas Medical Center	98	100	100	98	99	100	100	17*
St. Peter's University Hospital	98	95	100*	100	100	100*	100*	NA
Morristown Memorial Hospital	98	99	99	97	99	94	99	65*
Hunterdon Medical Center	98	100	99	97	100	100	95*	78*
Meadowlands Hospital Medical Center	98	100*	50*	100*	100*	NA	NA	NA
Ocean Medical Center	98	97	100	97	100	100*	100	83*
St. Clare's Hospital-Sussex	98	93*	100*	100*	100*	100*	100*	NA
Robert Wood Johnson University Hospital	98	98	99	94	99	89	100	64
Englewood Hospital and Medical Center	97	99	99	97	99	87	98	73*
Somerset Medical Center	97	99	98	98	99	100	97	40*
Virtua-West Jersey Hospital Berlin	97	98	92	100	100	91*	100*	NA
Virtua-West Jersey Hospital Voorhees	97	97	99	94	99	100*	100*	NA
St. Joseph's Hospital and Medical Center	97	100	98	100	98	92	100	26
Hoboken University Medical Center	97	98	93	100	100	71*	100*	NA
Kennedy Mem. Hospitals UMC-Stratford	97	100	91	100	98	91*	75*	NA
Capital Health System at Mercer	97	100	97	100	100	88*	100*	43*
South Jersey Healthcare Regional Medical Center	97	98	95	97	96	80*	100*	NA
Warren Hospital	97	97	95*	100*	100	88*	67*	NA
Our Lady of Lourdes Medical Center	97	97	98	99	98	93	96	14*
South Jersey Hospital-Elmer	96	95	100*	97	95*	100*	100*	NA
Underwood-Memorial Hospital	96	96	95	99	98	80*	100*	NA
UMDNJ-University Hospital	96	100	98	100	96	91	92	63*
Southern Ocean County Hospital	96	94	100	95	97	100*	100*	NA
University Medical Center at Princeton	96	99	98	98	98	91*	91*	38*
Columbus Hospital	96	96	88*	100	95*	100*	100*	NA
RWJ University Hospital at Rahway	96	98	91*	97	100	57*	100*	NA
Valley Hospital	96	98	97	97	98	80	100	50*

This information summarizes hospital performance on treating heart attacks in 2006. The Overall Score is a composite of the seven heart attack measures. The score is the percent of time that a hospital gave patients the correct treatment. Hospitals are presented from the highest (best) to lowest Overall Score.

Hospital Name	Overall Score %	Aspirin Arrival %	Aspirin Discharge %	Beta Blocker Arrival %	Beta Blocker Discharge %	ACEI/ARB Discharge %	Smoking Cessation Advice %	PCI within Time Lines ¹ %
Top 10% of hospitals scored at or higher than:	99	100	100	100	100	100	100	82
Top 50% of hospitals scored at or higher than:	96	98	96	97	98	89	100	50
Kennedy Mem. Hospitals UMC-Wash. Twp.	96	98	92	97	96	82*	88*	NA
Union Hospital	96	95	90	98	100	83*	100*	NA
Virtua-Memorial Hospital Burlington County	96	97	95	95	96	86	100*	NA
Virtua-West Jersey Hospital Marlton	96	99	99	96	99	89*	94*	33*
Overlook Hospital	95	98	100	95	100	82	90*	63*
St. Joseph's Wayne Hospital	95	96	84*	96	100*	100*	100*	NA
Newark Beth Israel Medical Center	95	97	98	88	95	98	98	38*
Community Medical Center	94	96	96	90	99	96	100	38
East Orange General Hospital	94	99	87	99	88	71*	100*	NA
Holy Name Hospital	94	98	93	98	92	72	100	83*
St. Francis Medical Center	94	98	98	95	97	73	82	20*
Capital Health System at Fuld	94	88	100*	94*	100*	75*	100*	NA
Raritan Bay Medical Center-Perth Amboy	94	96	100	93	96	87*	100	27*
Monmouth Medical Center	93	91	95	94	98	94*	95*	45*
Kimball Medical Center	93	91	93	90	99	95*	100*	NA
Muhlenberg Regional Medical Center	93	93	96	93	96	75*	91	71*
RWJ University Hospital at Hamilton	92	93	95	94	97	81	94	48
Mountainside Hospital	92	95	93	94	97	77	100*	32*
CentraState Medical Center	92	95	89	92	94	64*	100*	NA
Lourdes Medical Center of Burlington County	92	95	84	91	94	85*	100*	NA
JFK Medical Center	91	97	89	94	92	79*	94*	29*
Cape Regional Medical Center	91	87	96	92	95	83*	100*	NA
Shore Memorial Hospital	91	93	93	89	97	62	100*	NA
Pascack Valley Hospital	91	100	91	93	86	79*	89*	40*
Trinitas Hospital	91	93	96	92	95	83*	97	27*
Memorial Hospital of Salem County	91	94	89*	96	82*	80*	100*	NA
Cathedral-St. James Hospital	90	86*	100*	89*	89*	100*	100*	NA
Cathedral-St. Michael's Medical Center	90	95	89	87	89	84	99	50*
Jersey City Medical Center	89	100	92	95	83	69	100	60
Hackettstown Regional Medical Center	88	86	87	89	95	63*	100*	NA
Christ Hospital	87	95	83	89	77	77*	86*	57*
Raritan Bay Medical Center-Old Bridge	86	85	95*	79	88	80*	100*	NA
William B. Kessler Memorial Hospital	86	90	92*	89	67*	75*	0*	NA
St. Mary's Hospital (Passaic)	83	90*	63*	85*	80*	100*	80*	NA
Bayshore Community Hospital	83	85	72	86	79	75*	86*	NA
Bergen Regional Medical Center	81	100*	75*	85*	60*	80*	NA	NA
Barnert Hospital	81	83*	0*	91*	86*	80*	NA	NA
Greenville Hospital	76	65*	57*	89*	86*	0*	100*	NA

NA (Not Applicable) indicates that the hospital reported no cases for this measure.

* Indicates that the hospital had a small number of patients (less than 25) for this measure.

¹ PCI Within Time Lines includes information only for July through December 2006 since the measure definition changed.

Basic Facts on Treatment for Heart Attacks

These scores show how well hospitals are providing care for eligible heart attack patients. A heart attack, or acute myocardial infarction (AMI), can occur if the arteries supplying blood to the heart become blocked, and the blood supply is slowed or stopped. The heart can't get the oxygen and nutrients it needs. The affected heart tissue may die.

Symptoms of a heart attack can include chest pain (crushing, squeezing or burning pain in the center of the chest which may radiate to the arm or jaw), shortness of breath, dizziness, faintness, chills, sweating or nausea. Skin may feel cold or clammy, and patients may appear gray and look ill. Sometimes there are no symptoms.

Patients with contraindications to any of the recommended treatments are excluded from the scores for that treatment. Higher percentages indicate better performance.

Aspirin at Arrival

- ❖ **THIS SCORE TELLS YOU** the percent of heart attack patients who received aspirin within 24 hours of hospital arrival.
- ❖ **THIS INFORMATION IS IMPORTANT** because taking aspirin as soon as symptoms of a heart attack begin may reduce the severity of the attack. Aspirin can help prevent or dissolve existing blood clots. Continued use of aspirin may help reduce the risk of another heart attack.

Aspirin at Discharge

- ❖ **THIS SCORE TELLS YOU** the percent of heart attack patients prescribed aspirin at discharge from the hospital.
- ❖ **THIS INFORMATION IS IMPORTANT** because aspirin can help prevent or dissolve existing blood clots. Continued use of aspirin may help reduce the risk of another heart attack.

Beta Blocker at Arrival

- ❖ **THIS SCORE TELLS YOU** the percent of heart attack patients given a beta blocker within 24 hours of hospital arrival.
- ❖ **THIS INFORMATION IS IMPORTANT** because beta blockers are medicines that lower blood pressure, treat chest pain (angina) and heart failure, and help prevent heart attacks. Beta blockers relieve the stress on the heart by slowing the heart rate and reducing the force with which the heart contracts to pump blood. They also help keep blood vessels throughout the entire body from constricting.

Beta Blocker at Discharge

- ❖ **THIS SCORE TELLS YOU** the percent of heart attack patients prescribed a beta blocker at discharge from the hospital.
- ❖ **THIS INFORMATION IS IMPORTANT** because beta blockers are medicines that lower blood pressure, treat chest pain (angina) and heart failure, and help prevent heart attacks. Beta blockers relieve the stress on the heart by slowing the heart rate and reducing the force with which the heart contracts to pump blood. They also help keep blood vessels throughout the body from constricting.



ACE Inhibitor or ARB at Discharge

- ❖ **THIS SCORE TELLS YOU** the percent of heart attack patients with left ventricular systolic dysfunction (LVSD) who were prescribed an angiotensin-converting enzyme (ACE) inhibitor or an angiotensin receptor blocker (ARB) at discharge from the hospital.
- ❖ **THIS INFORMATION IS IMPORTANT** because ACE Inhibitors and ARBs are medicines that can help reduce the risk of death after a heart attack. Continued use may help prevent heart failure. ACE Inhibitors and ARBs modify the effects of hormones (angiotensin II) that regulate blood pressure and influence the healing process of the heart. They are prescribed to lower blood pressure and thus lessen the workload of the heart.

Smoking Cessation Advice

- ❖ **THIS SCORE TELLS YOU** the percent of adult heart attack patients with a history of smoking cigarettes who received advice before discharge from the hospital on how to quit smoking.
- ❖ **THIS INFORMATION IS IMPORTANT** because smoking is linked to heart attacks. Quitting may help prevent another one.

PCI within Time Lines

- ❖ **THIS SCORE TELLS YOU** the percent of heart attack patients who underwent angioplasty, or a Percutaneous Coronary Intervention (PCI), within specified time lines after admission to a hospital.
- ❖ **THIS INFORMATION IS IMPORTANT** because PCI is a procedure to open the blocked blood vessels, re-establishing the blood supply to the heart muscle. It involves inserting a catheter (a flexible tube) often through the leg. Increasingly, cardiologists choose to do a PCI instead of prescribing clot-dissolving medication. However, PCI is not available at every general hospital in New Jersey.

To find out if a New Jersey hospital is licensed to perform PCI, ask your doctor.



Pneumonia Treatment Scores

Hospital Name	Overall Score %	Oxygenation Assessment %	Pneumonia Vaccination %	Antibiotic Timing %	Antibiotic Selection %	Blood Cultures %	Smoking Cessation Advice %
Top 10% of hospitals scored at or higher than:	96	100	97	94	95	98	100
Top 50% of hospitals scored at or higher than:	92	100	89	85	90	95	98
AtlantiCare Regional Medical Center-City	98	100	99	94	97	99	100
Hackensack University Medical Center	98	100	96	96	99	98	100
St. Clare's Hospital-Denville	97	100	98	96	92	99	100
Clara Maass Medical Center	97	100	96	91	96	98	100
AtlantiCare Regional Medical Center-Mainland	96	100	97	88	98	99	100
St. Clare's Hospital-Dover	96	100	90	96	98	96	100
University Medical Center at Princeton	96	100	97	90	93	99	100
Kennedy Mem. Hospitals UMC-Stratford	96	100	93	95	91	98	94
Virtua-West Jersey Hospital Berlin	96	100	89	97	90	100	98
Columbus Hospital	96	100	96	91	94	95	100
Hackettstown Regional Medical Center	95	100	97	92	91	97	89
Muhlenberg Regional Medical Center	95	99	97	93	91	93	95
St. Clare's Hospital-Sussex	95	100	98	97	82	95	100*
Overlook Hospital	95	100	97	89	90	97	85
South Jersey Hospital-Elmer	95	100	92	89	93	96	100*
Hunterdon Medical Center	95	100	93	89	88	98	97
Newton Memorial Hospital	94	100	95	85	94	95	100
Kimball Medical Center	94	99	95	89	90	96	100
Riverview Medical Center	94	100	91	83	95	99	100
Raritan Bay Medical Center-Old Bridge	94	100	89	89	91	97	95
Somerset Medical Center	94	100	95	87	92	94	100
JFK Medical Center	94	100	96	89	87	95	93
Valley Hospital	94	100	94	93	84	93	100
Greenville Hospital	94	98	84	91	92	93	100
Union Hospital	93	100	93	89	89	92	100
Shore Memorial Hospital	93	100	88	85	93	97	100
Cooper Hospital/University Medical Center	93	100	80	84	98	97	100
Kennedy Mem. Hospitals UMC-Wash. Twp.	93	100	89	85	92	96	94
Morristown Memorial Hospital	93	100	87	86	94	95	100
Warren Hospital	93	100	87	87	95	95	90
Virtua-Memorial Hospital Burlington County	93	100	89	87	89	95	95
Virtua-West Jersey Hospital Marlton	93	100	91	87	80	100	89
Kennedy Mem. Hospitals UMC-Cherry Hill	93	100	88	94	85	91	89
East Orange General Hospital	92	99	80	88	89	98	97
Barnert Hospital	92	100	81	85	100	94	88
Ocean Medical Center	92	100	87	84	92	96	100
Englewood Hospital and Medical Center	92	100	90	85	92	94	94
Robert Wood Johnson University Hospital	92	100	81	89	87	97	99
Jersey Shore University Medical Center	92	100	95	81	91	91	100
Raritan Bay Medical Center-Perth Amboy	92	99	96	88	92	85	95
Meadowlands Hospital Medical Center	92	100	87	78	93	97	100*
Trinitas Hospital	92	99	93	86	85	94	91

This information summarizes hospital performance on treating pneumonia in 2006. The Overall Score is a composite of the six pneumonia measures. The score is the percent of time that a hospital gave patients the correct treatment. Hospitals are presented from the highest (best) to lowest Overall Score.

Hospital Name	Overall Score %	Oxygenation Assessment %	Pneumonia Vaccination %	Antibiotic Timing %	Antibiotic Selection %	Blood Cultures %	Smoking Cessation Advice %
Top 10% of hospitals scored at or higher than:	96	100	97	94	95	98	100
Top 50% of hospitals scored at or higher than:	92	100	89	85	90	95	98
Hoboken University Medical Center	92	99	88	84	90	93	100
Monmouth Medical Center	92	100	89	79	91	97	90
St. Joseph's Wayne Hospital	91	100	83	88	84	95	100
RWJ University Hospital at Rahway	91	99	93	85	91	88	93
RWJ University Hospital at Hamilton	91	100	82	82	91	97	86
South Jersey Healthcare Regional Medical Center	91	99	86	78	94	94	100
Memorial Hospital of Salem County	91	100	88	83	89	89	100
St. Peter's University Hospital	91	100	90	79	89	94	80
Chilton Memorial Hospital	91	100	90	75	86	95	96
St. Barnabas Medical Center	90	100	87	87	89	83	100
Southern Ocean County Hospital	90	100	77	83	93	94	96
William B. Kessler Memorial Hospital	90	100	89	87	85	87	81
CentraState Medical Center	90	100	80	87	81	92	100
Our Lady of Lourdes Medical Center	90	100	75	82	91	93	100
St. Joseph's Hospital and Medical Center	90	100	92	81	81	88	100
Mountainside Hospital	89	100	79	80	94	92	99
Bayshore Community Hospital	89	99	93	85	70	90	91
Cape Regional Medical Center	89	100	76	88	82	91	96
Pascack Valley Hospital	89	100	86	75	85	98	91
Christ Hospital	89	100	67	81	88	98	91
Virtua-West Jersey Hospital Voorhees	89	99	82	80	85	95	80
Community Medical Center	89	99	90	76	88	88	92
Jersey City Medical Center	89	100	86	75	89	89	98
Cathedral-St. James Hospital	89	100	96	73	83	88	100*
St. Mary's Hospital (Passaic)	88	100	84	91	90	81	63
Palisades Medical Center of New York	88	98	97	74	78	88	100*
St. Francis Medical Center	88	100	80	77	82	97	81
Bergen Regional Medical Center	88	100	83	81	86	89	60*
Cathedral-St. Michael's Medical Center	88	96	72	82	83	94	100
Capital Health System at Mercer	87	100	75	74	89	90	95
Newark Beth Israel Medical Center	87	99	88	73	80	89	99
Underwood-Memorial Hospital	87	100	78	76	92	90	78
Capital Health System at Fuld	87	100	64	79	85	93	86
UMDNJ-University Hospital	85	100	79	60	95	94	80
Holy Name Hospital	85	100	73	74	70	96	96*
Lourdes Medical Center of Burlington County	84	100	67	73	93	86	73
Bayonne Medical Center	82	99	59	84	78	87	47*
Deborah Heart and Lung Center	79	100*	85*	17*	91*	100*	100*

*Indicates that the hospital had a small number of patients (less than 25) for this measure.

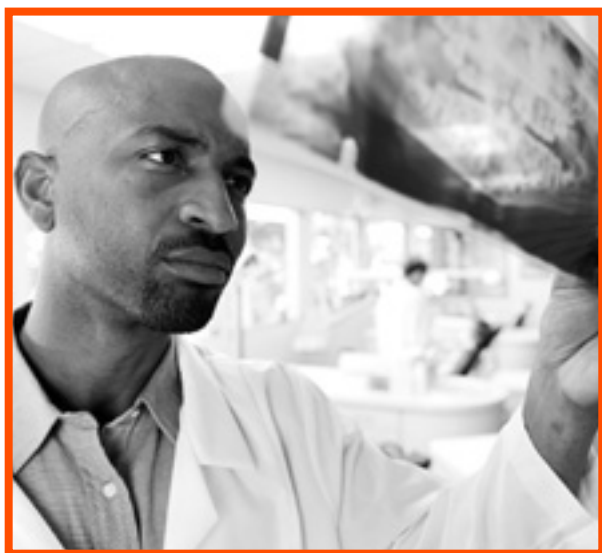
Basic Facts on Treatment for Pneumonia

These scores show how well hospitals are treating eligible pneumonia patients. Pneumonia is an inflammation of the lungs caused by an infection. Many different organisms can cause pneumonia, including bacteria, viruses and fungi. Pneumonia can range from very mild to very severe, even fatal, depending on the type of organism causing it as well as the age and current health of the individual. Symptoms can include fever, fatigue, difficulty breathing, chills, “wet” cough and chest pain.

Patients with contraindications to any of the recommended treatments are excluded from the scores for that treatment. Higher percentages indicate better performance.

Oxygenation Assessment

- ❖ **THIS SCORE TELLS YOU** what percent of pneumonia patients had their oxygen level checked within 24 hours of hospital arrival.
- ❖ **THIS INFORMATION IS IMPORTANT** because measuring the amount of oxygen in your blood determines if you need oxygen therapy. Pneumonia can lower the oxygen in your blood because the air spaces in your lungs fill with fluid, and the oxygen you breathe does not enter your bloodstream. The assessment may include an ABG (arterial blood gas) or pulse oximetry (electrodes attached to a part of your body).



Pneumonia Vaccination Screening

- ❖ **THIS SCORE TELLS YOU** the percent of pneumonia patients assessed for and, if needed, given the pneumonia vaccine before discharge from the hospital.
- ❖ **THIS INFORMATION IS IMPORTANT** because a pneumonia vaccination may help prevent future bacterial pneumonia and also lower the risk of complications.

Antibiotic Timing

- ❖ **THIS SCORE TELLS YOU** the percent of pneumonia patients who received an antibiotic within 4 hours of hospital arrival.
- ❖ **THIS INFORMATION IS IMPORTANT** because early antibiotic treatment can cure bacterial pneumonia quickly and reduce the possibility of complications. However, there is controversy about the desirability of hospitals achieving a 100% score on this measure. Pneumonia can be difficult to diagnose quickly, and there is some concern that this measure provides hospitals an inappropriate incentive to use antibiotics for all potential pneumonia patients before making a firm diagnosis. Overuse of antibiotics reduces quality of health care since it can result in bacterial resistance to these antibiotics.

Antibiotic Selection

- ❖ **THIS SCORE TELLS YOU** the percent of pneumonia patients who received the most appropriate antibiotic for their first treatment.
- ❖ **THIS INFORMATION IS IMPORTANT** because different antibiotics treat specific bacterial infections. The initial antibiotic selection should be the best treatment choice for that type of pneumonia.

Blood Culture before Initial Antibiotic

- ❖ **THIS SCORE TELLS YOU** the percent of pneumonia patients in the hospital that had their blood taken and cultured in the Emergency Department before receiving their first antibiotic.
- ❖ **THIS INFORMATION IS IMPORTANT** because a blood culture indicates which antibiotic will work best to treat that particular type of bacterial pneumonia.

Smoking Cessation Advice

- ❖ **THIS SCORE TELLS YOU** the percent of adult pneumonia patients with a history of smoking cigarettes who received advice before discharge from the hospital on how to quit smoking.
- ❖ **THIS INFORMATION IS IMPORTANT** because smoking may increase the severity of your pneumonia and make it more difficult to recover. Quitting may help improve your condition.



Surgical Infection Prevention Scores

Hospital Name	Overall Score %	Preventive Antibiotic Started %	Preventive Antibiotic Stopped %
Top 10% of hospitals scored at or higher than:	95	97	94
Top 50% of hospitals scored at or higher than:	88	92	87
Columbus Hospital	99	98	100
Deborah Heart and Lung Center	98	97	100
St. Clare's Hospital-Denville	98	99	98
St. Clare's Hospital-Sussex	97	100*	93*
Newton Memorial Hospital	96	98	93
St. Clare's Hospital-Dover	96	97	94
St. Peter's University Hospital	95	99	92
Ocean Medical Center	95	97	93
Clara Maass Medical Center	95	95	95
Valley Hospital	95	97	93
Kennedy Mem. Hospitals UMC-Cherry Hill	94	92	97
AtlantiCare Regional Medical Center-Mainland	94	95	94
Kennedy Mem. Hospitals UMC-Wash. Twp.	94	92	95
Kennedy Mem. Hospitals UMC-Stratford	94	93	94
St. Joseph's Wayne Hospital	94	96	90
RWJ University Hospital at Rahway	93	97	90
Overlook Hospital	93	94	93
Hackensack University Medical Center	93	96	89
Newark Beth Israel Medical Center	93	92	94
Jersey Shore University Medical Center	93	96	89
Union Hospital	92	93	92
Virtua-Memorial Hospital Burlington County	92	96	89
Barnert Hospital	91	92	91
Our Lady of Lourdes Medical Center	91	93	89
Cooper Hospital/University Medical Center	91	90	93
Hoboken University Medical Center	91	92	90
RWJ University Hospital at Hamilton	91	94	87
University Medical Center at Princeton	91	95	86
Kimball Medical Center	91	93	89
Hunterdon Medical Center	91	93	88
Riverview Medical Center	90	94	86
Muhlenberg Regional Medical Center	90	96	83
St. Joseph's Hospital and Medical Center	90	91	88
Virtua-West Jersey Hospital Marlton	90	85	95
Pascack Valley Hospital	89	94	85
Warren Hospital	89	90	88
Somerset Medical Center	89	90	89
Monmouth Medical Center	89	91	86
Virtua-West Jersey Hospital Voorhees	88	86	91
Morristown Memorial Hospital	88	86	90
Robert Wood Johnson University Hospital	88	86	90

This information summarizes hospital performance on preventing surgical infections in 2006. The Overall Score is a composite of the two infection prevention measures. The score is the percent of time that a hospital gave patients the correct treatment. Hospitals are presented from the highest (best) to lowest Overall Score.

Hospital Name	Overall Score %	Preventive Antibiotic Started %	Preventive Antibiotic Stopped %
Top 10% of hospitals scored at or higher than:	95	97	94
Top 50% of hospitals scored at or higher than:	88	92	87
Chilton Memorial Hospital	88	91	84
Hackettstown Regional Medical Center	87	85	90
St. Barnabas Medical Center	87	87	87
Trinitas Hospital	87	96	77
Community Medical Center	86	86	87
Lourdes Medical Center of Burlington County	86	91	82
South Jersey Hospital-Elmer	86	91	82
Mountainside Hospital	86	88	83
Shore Memorial Hospital	86	93	78
Bayshore Community Hospital	86	94	76
Cape Regional Medical Center	85	86	84
JFK Medical Center	85	96	73
Capital Health System at Mercer	85	86	84
Raritan Bay Medical Center-Perth Amboy	84	86	83
Cathedral-St. Michael's Medical Center	84	94	74
Underwood-Memorial Hospital	84	81	88
AtlantiCare Regional Medical Center-City	84	86	82
Jersey City Medical Center	83	92	74
St. Francis Medical Center	83	85	80
Englewood Hospital and Medical Center	83	90	74
Holy Name Hospital	81	93	69
Southern Ocean County Hospital	80	75	84
UMDNJ-University Hospital	79	78	80
Capital Health System at Fuld	78	80	76
CentraState Medical Center	78	80	76
Cathedral-St. James Hospital	77	80	75
East Orange General Hospital	77	84	69
South Jersey Healthcare Regional Medical Center	76	93	59
Meadowlands Hospital Medical Center	76	67	84
Christ Hospital	75	90	56
Raritan Bay Medical Center-Old Bridge	72	78	65
Memorial Hospital of Salem County	71	62	82
Virtua-West Jersey Hospital Berlin	70	60	81*
Palisades Medical Center of New York	64	85	41
St. Mary's Hospital (Passaic)	61	72	50
Bergen Regional Medical Center	56*	78*	33*
Bayonne Medical Center	51	66	36
William B. Kessler Memorial Hospital	51	81	21
Greenville Hospital	40	40*	40*

* Indicates that the hospital had a small number of patients (less than 25) for this measure.

Basic Facts on Surgical Infection Prevention

These scores show how well hospitals are providing their surgery patients with care to prevent infections. Hospitals can reduce the risk of wound infection after surgery by administering the proper medicines at the correct time on the same day of surgery. Signs of possible infection after surgery can include: a surgical wound that is red, hot and swollen; a fever of over 100 degrees following hospital discharge; a smelly or yellow/green fluid oozing out of the wound; or increased pain while taking pain medication.

The measures listed below represent the best practices for the prevention of infections after selected surgeries (colon surgery, hip and knee arthroplasty, abdominal and vaginal hysterectomy, cardiac surgery and vascular surgery).

Patients with contraindications to any of the recommended treatments are excluded from the scores for that treatment. Higher percentages indicate better performance.

Preventive Antibiotic 1 Hour Before Surgery

- ❖ **THIS SCORE TELLS YOU** the percent of eligible surgical patients who received prophylactic or preventive antibiotics within one hour prior to surgical incision.
- ❖ **THIS INFORMATION IS IMPORTANT** because surgery patients given antibiotics, medicines that prevent and treat infections, within the hour before their operation are less likely to get wound infections. Getting an antibiotic over an hour earlier or after surgery begins is not as effective.



Preventive Antibiotics Discontinued Within 24 Hours

- ❖ **THIS SCORE TELLS YOU** the percent of eligible surgical patients whose prophylactic or preventive antibiotics were discontinued within 24 hours after surgery ended (or 48 hours after CABG or other cardiac surgery). Antibiotics are medicines that prevent and treat infections.
- ❖ **THIS INFORMATION IS IMPORTANT** because taking antibiotics for more than 24 hours after routine surgery is usually not necessary and can increase the risk of side effects, such as stomach aches, serious types of diarrhea, and developing resistance to the antibiotic (the use of too much antibiotic can prevent them from being effective). There are, however, exceptions. If the surgical site has been contaminated, making the surgery more complicated, there may be a need for additional antibiotics after 24 hours. Talk to your doctor to determine how long you should take antibiotics after surgery.

Tips for Safer Surgery

To help make your surgery safer, consider asking your doctor(s), nurse(s) and clinical staff some of the following questions before surgery:

- ❖ **What are my options for the best place to have this type of surgery: in the office, same-day surgery center or hospital?**

Consider cost, your health plan coverage, and above all, safety factors.

- ❖ **What exactly do you expect will be done during surgery?**

Be sure that you, your doctor and your surgeon agree on exactly what will be done during surgery, and you are aware of what to expect.

- ❖ **Are the surgeon, anesthesiologist and nurses aware of any allergies or previous bad reactions to anesthesia that you may have had?**

Don't assume they know what you are allergic to, especially if you have not told them. If you have already told them, remind them.

- ❖ **Can I continue to take medications and vitamins that I am routinely taking?**

Inform all your doctors and nursing staff about all the prescription medications, vitamins, herbal supplements, and over-the-counter medications you are currently taking. Certain combinations of medicines can lead to problems. Patients taking heart medication need to be careful that the combinations will not lead to a heart attack.

- ❖ **Should I wash with an antibiotic soap the day before surgery?**

If you are supposed to wash with an antibiotic soap, ask the doctor to show you how. Doing so may help prevent infections.

- ❖ **Will I need an antibiotic before surgery? If so, for how long?**

Antibiotics should be taken within 1 hour before surgery and discontinued within 24 hours in most cases, lowering your risk of infection after surgery.

- ❖ **If hair has to be removed from my body before surgery, will you be using clippers rather than a razor?**

Razors can cause infections if they leave small cuts on the skin.

- ❖ **What will you do to prevent the risk of blood clots?**

Because you do not move while under anesthesia, blood clots can form, possibly leading to a heart attack and a stroke. The more complicated the surgery, the higher the risk.



Congestive Heart Failure Treatment Scores

Hospital Name	Overall Score %	LVS Assessment %	ACEI/ARB Discharge %	Discharge Instructions %	Smoking Cessation Advice %
Top 10% of hospitals scored at or higher than:	98	100	99	97	100
Top 50% of hospitals scored at or higher than:	91	97	90	83	100
AtlantiCare Regional Medical Center-City	100	100	100	99	100
Deborah Heart and Lung Center	99	100	98	100	100
Clara Maass Medical Center	99	99	100	98	100
Somerset Medical Center	98	100	99	95	100
St. Clare's Hospital-Sussex	98	98	100*	97	100*
Palisades Medical Center of New York	98	97	100	99	100*
Virtua-West Jersey Hospital Berlin	98	98	95	98	100
Newark Beth Israel Medical Center	98	97	97	98	100
St. Clare's Hospital-Dover	98	99	90	98	100*
St. Barnabas Medical Center	97	99	98	94	100
St. Clare's Hospital-Denville	97	99	97	95	100
Jersey Shore University Medical Center	97	100	96	94	100
South Jersey Hospital-Elmer	97	99	88	97	100*
Greenville Hospital	97	99	86	97	96
Hackensack University Medical Center	96	100	94	93	99
AtlantiCare Regional Medical Center-Mainland	96	100	100	89	100
Riverview Medical Center	96	100	100	89	100*
Ocean Medical Center	96	99	95	90	100
Monmouth Medical Center	96	99	98	91	94
Kimball Medical Center	95	98	95	91	100
UMDNJ-University Hospital	95	98	94	94	93
Cooper Hospital/University Medical Center	95	98	93	92	100
Columbus Hospital	95	97	98	89	100
Hunterdon Medical Center	95	98	91	94	70*
Cathedral-St. James Hospital	94	95	95	92	100*
University Medical Center at Princeton	94	100	96	86	100*
St. Peter's University Hospital	94	100	100	84	100*
Virtua-Memorial Hospital Burlington County	94	98	85	91	98
Newton Memorial Hospital	94	99	83	90	100*
Virtua-West Jersey Hospital Voorhees	94	100	100	81	95*
Morristown Memorial Hospital	93	97	94	87	100
Warren Hospital	93	100	90	86	80*
Virtua-West Jersey Hospital Marlton	93	99	90	83	94*
St. Joseph's Hospital and Medical Center	93	94	96	88	100
Bayonne Medical Center	92	99	95	80	96
Overlook Hospital	92	99	89	82	100*
Chilton Memorial Hospital	92	98	88	83	92
Jersey City Medical Center	91	100	73	90	100
Meadowlands Hospital Medical Center	91	96	96	82	100*
South Jersey Healthcare Regional Medical Center	91	98	79	86	100
Southern Ocean County Hospital	91	97	89	82	91*

This information summarizes hospital performance on treating congestive heart failure in 2006. The Overall Score is a composite of the four heart failure measures. The score is the percent of time that a hospital gave patients the correct treatment. Hospitals are presented from the highest (best) to lowest Overall Score.

Hospital Name	Overall Score %	LVS Assessment %	ACEI/ARB Discharge %	Discharge Instructions %	Smoking Cessation Advice %
Top 10% of hospitals scored at or higher than:	98	100	99	97	100
Top 50% of hospitals scored at or higher than:	91	97	90	83	100
RWJ University Hospital at Rahway	91	94	91	83	97
Our Lady of Lourdes Medical Center	90	99	88	78	100
Raritan Bay Medical Center-Perth Amboy	90	95	95	79	98
Hackettstown Regional Medical Center	88	93	82	83	100*
Union Hospital	88	96	88	75	97
Underwood-Memorial Hospital	88	98	91	72	94
RWJ University Hospital at Hamilton	87	95	78	80	90
St. Francis Medical Center	87	91	75	91	83
Memorial Hospital of Salem County	87	98	93	67	100
Cathedral-St. Michael's Medical Center	87	89	80	85	97
JFK Medical Center	86	98	86	67	100
Mountainside Hospital	86	95	86	72	100*
Hoboken University Medical Center	86	95	80	77	100*
Capital Health System at Mercer	86	92	86	77	95
Englewood Hospital and Medical Center	86	95	81	76	100
Kennedy Mem. Hospitals UMC-Cherry Hill	86	96	83	70	88*
Cape Regional Medical Center	84	87	85	80	87
Kennedy Mem. Hospitals UMC-Wash. Twp.	84	99	74	66	100
Robert Wood Johnson University Hospital	84	97	92	62	100
St. Joseph's Wayne Hospital	84	90	84	74	100*
Holy Name Hospital	84	94	77	73	100*
Raritan Bay Medical Center-Old Bridge	84	92	86	65	97
Valley Hospital	84	96	92	61	100
Shore Memorial Hospital	83	96	73	67	97
Barnert Hospital	83	83	87	80	88
Bayshore Community Hospital	82	94	73	63	98
Muhlenberg Regional Medical Center	82	97	91	54	97
Trinitas Hospital	82	94	87	59	99
East Orange General Hospital	82	90	91	61	89
Capital Health System at Fuld	82	97	74	63	93
Kennedy Mem. Hospitals UMC-Stratford	81	99	74	62	84
William B. Kessler Memorial Hospital	81	89	42	84	76*
Lourdes Medical Center of Burlington County	80	93	85	63	72
Community Medical Center	78	97	86	39	100
Christ Hospital	76	96	69	48	97
Bergen Regional Medical Center	76	90*	33*	71*	75*
CentraState Medical Center	74	90	80	45	100
St. Mary's Hospital (Passaic)	73	82	88*	55	100*
Pascack Valley Hospital	71	86	90	39	100*

*Indicates that the hospital had a small number of patients (less than 25) for this measure.

Basic Facts on Treatment for Congestive Heart Failure

These scores show how well hospitals are providing care for eligible heart failure patients. Congestive heart failure (CHF) is a weakening of the heart's muscle that reduces its pumping power. Your body doesn't get the oxygen and nutrients it needs. Your heart tries to pump more blood, but over time the heart muscle walls weaken.

Symptoms of CHF can include shortness of breath from fluid in the lungs, dizziness, fatigue, weakness, cold and clammy skin, or rapid and irregular heartbeat. CHF can result from coronary artery disease, heart attack cardiomyopathy (heart muscle damage from infection, alcohol or drugs), or an overworked heart (caused by high blood pressure, kidney disease, diabetes, or a defect from birth).

Patients with contraindications to any of the recommended treatments are excluded from the scores for that treatment. Higher percentages indicate better performance.

Left Ventricular Systolic (LVS) Function Assessment

- ❖ **THIS SCORE TELLS YOU** the percent of CHF patients who had their LVS function evaluated before hospital arrival, during hospitalization, or at discharge.
- ❖ **THIS INFORMATION IS IMPORTANT** because an assessment of your heart's left side, the main pumping chamber, is needed to determine how well your heart is pumping. Results help determine appropriate treatment.

ACE Inhibitor or ARB at Discharge

- ❖ **THIS SCORE TELLS YOU** the percent of CHF patients with left ventricular systolic dysfunction (LVSD) prescribed an angiotensin converting enzyme (ACE) inhibitor or an angiotensin receptor blocker (ARB) at discharge from the hospital.
- ❖ **THIS INFORMATION IS IMPORTANT** because ACE Inhibitors and ARBs are medicines that modify the effects of hormones that regulate blood pressure and influence the healing process of the heart. Since these two drugs work differently, your doctor will decide which drug is most appropriate for you.

Discharge Instructions

- ❖ **THIS SCORE TELLS YOU** the percent of patients who received written instructions or educational material at hospital discharge addressing: activity level, diet, discharge medications, follow-up appointment, weight monitoring, and instructions if symptoms worsen.
- ❖ **THIS INFORMATION IS IMPORTANT** because CHF is a chronic condition which must be managed closely to prevent repeat hospitalizations and further damage to the heart and other organs.

Smoking Cessation Advice

- ❖ **THIS SCORE TELLS YOU** the percent of adult CHF patients with a history of smoking cigarettes who received advice on how to quit smoking before hospital discharge.
- ❖ **THIS INFORMATION IS IMPORTANT** because smoking increases your risk for developing blood clots and further heart disease, which can lead to heart attacks, heart failure or stroke. Smoking causes blood vessels to thicken making it harder for blood to flow to the heart.

Hospital Quality Oversight

In addition to this performance report, other steps are taken to promote quality in New Jersey hospitals.

New Jersey Department of Health and Senior Services (DHSS)

The Department's oversight activities are intended to promote the health, safety and welfare of patients/residents in New Jersey health care facilities. DHSS issues licenses to hospitals, ambulatory care and other health care facilities. You can access the names, addresses, licensure expiration dates and other information on the hospitals licensed by DHSS by visiting www.nj.gov/health/healthfacilities/search/ac.shtml.

To evaluate compliance with State regulatory standards, the Department conducts comprehensive facility inspections and also responds to specific complaints. In addition, the Department conducts inspections under contract to the U.S. Department of Health and Human Services to evaluate facility compliance with Medicare conditions of participation.

If a hospital does not meet State licensure or Medicare standards, the Department may cite the hospital for a deficiency, and the hospital must submit a plan of correction. The Department may also issue a monetary penalty or take other actions. A summary of enforcement actions taken may be found at www.nj.gov/health/healthfacilities/hospfines/index.shtml.

DHSS also collects confidential information on medical errors and ensures that hospitals review these events to prevent reoccurrence.

New Jersey Board of Medical Examiners, Division of Consumer Affairs

For specific information on licensure and oversight of New Jersey physicians, visit the Division of Consumer Affairs web site at www.NJdoctorlist.com.

Joint Commission

The Joint Commission, formerly JCAHO, is an independent, not-for-profit national organization that evaluates and accredits nearly 15,000 health care organizations. All New Jersey hospitals are accredited by the Joint Commission. For additional information on specific hospitals, visit the Joint Commission web site at www.jointcommission.org, under Quality Check®. You can also request a printed copy from the Customer Service Center at (630) 792-5800.



Taking an Active Role in Your Health Care

Take responsibility for your health care by making decisions carefully and learning about your medical condition and treatment options.

Choose a Doctor Carefully

CHECK whether your insurer includes the physician in its network.

GET INFORMATION about the doctor's training and hospital affiliations from the doctor's office.

FIND OUT if the doctor is board certified in his or her specialty area.

CHECK whether there are any disciplinary actions against the doctor.

FIND OUT about the doctor's office hours, back-up coverage to handle emergencies and how quickly you can make an appointment.

Manage Your Medications Safely

ASK the pharmacist whether the medicine is what your doctor prescribed.

ASK both your doctor and your pharmacist to tell you about your medication in understandable terms.

- ❖ What is the purpose of the medicine?
- ❖ How am I supposed to take the medicine and for how long?
- ❖ What side effects are likely? What do I do if they occur?
- ❖ Is this medicine safe to take with my other medicines or dietary supplements?
- ❖ What food, drink or activities should I avoid while taking this medicine?

READ the labels and inserts of the medication to learn about side effects and warnings. If you have any questions about the instructions, ask.

USE the same pharmacy or pharmacy chain for all medications, if possible.

BRING a list of all the medications you are taking if you are entering the hospital.



INCLUDE non-prescription medicines, herbal remedies and dietary supplements, such as vitamins.

SHOW the list of medicines to your doctor, surgeon, hospital pharmacist and hospital staff.

- ❖ If there isn't time to make a list, bring the medications and keep them in their containers.
- ❖ Make sure all your doctors know everything you are taking.

BRING all your medications and supplements with you to your doctor at least once a year, even if you are not being admitted to the hospital.

INFORM your doctors, pharmacist and hospital personnel about any existing drug allergies.

- ❖ While in the hospital, if a health care professional administers or replaces your IV solution, ask about the purpose of the IV solution and the dosage.

Get the Results of All Tests and Procedures

CALL your doctor and ask for your results, whether they are taken in the hospital or in your doctor's office.

- ❖ Don't assume that the results are fine if you do not get them when expected or if your doctor neglects to make a follow-up call to explain them.

ASK questions about the results and what they mean.

Know Your Treatment Options

UNDERSTAND what your doctor is telling you about your medical condition.

LEARN as much as you can. Your doctor and/or your library can help you find reliable information.

ASK your doctor to explain all of your alternative treatments and non-surgical options, including the potential risks of each one.

CONSIDER getting a second opinion and weigh the possible outcomes of each treatment option.

When in the Hospital

CHOOSE a hospital that has treated many patients with your condition or the surgery you need. Patients have better results when they are treated in hospitals that have had a lot of experience treating their condition.

CONSIDER asking all health care workers that have direct contact with you whether they have washed their hands. Hand washing prevents the spread of infections.

FIND OUT which hospital staff will develop your care plan.

- ❖ Who will be leading this function?
- ❖ How often will they meet to discuss your needs?
- ❖ How often will information be communicated to you and your family?

ASK your doctor to explain the treatment plan you will use at home.

- ❖ Learn about your medication.
- ❖ Find out when you can resume regular activities.
- ❖ What kind of follow-up care will you require?
- ❖ Will you need professional care?
- ❖ Will the hospital assist you in finding someone to help with your care at home?
- ❖ What training will the hospital provide to continue your treatment at home?
- ❖ Ask for copies of results of medical and lab tests taken while in the hospital.

Take Charge

TAKE CARE of your health with regular appointments for routine check-ups and preventive care.

TALK to your doctor about when you need preventive health screenings.

CREATE a healthy lifestyle by eating right, exercising and getting the proper amount of sleep.

BE PREPARED in case of emergencies. Prepare a Living Will, a legal document that describes how you want to be treated in case you are incapacitated or near death.

LEARN your rights and responsibilities when in the hospital.

See Patient Rights Section on page 24.

Hospital Patients . . . Know Your Rights

As a patient in a New Jersey hospital, you have the right to:



Medical Care

- ❖ Receive an understandable explanation from your physician of your complete medical condition including recommended treatment, expected results, risks and reasonable alternatives. If your physician believes that some of this information would be detrimental to your health or beyond your ability to understand, the explanation must be given to your next of kin or guardian.
- ❖ Give informed written consent prior to the start of specified, non-emergency medical procedures or treatments only after your physician has explained—in terms you can understand—specific details about the recommended procedure or treatment, the risks, time to recover and reasonable medical alternatives.
- ❖ Be informed of the hospital's written policies and procedures regarding life-saving methods and the use or withdrawal of life-support.
- ❖ Refuse medication and treatment to the extent permitted by law and to be informed of the medical consequences of refusal.
- ❖ Be included in experimental research only when you have given informed consent to participate.

- ❖ Choose your own private professional nurse and to contract directly for this care during hospitalization. You can request from the hospital a list of local non-profit professional nurses association registries that refer nurses.
- ❖ Receive appropriate assessment and treatment for pain.

Transfers

- ❖ Be transferred to another facility only if the current hospital is unable to provide the level of appropriate medical care or if the transfer is requested by you or your next of kin or guardian.
- ❖ Receive from a physician in advance an explanation of the reasons for transfer including alternatives, verification of acceptance from the receiving facility, and assurance that the move will not worsen your medical condition.

Communication and Information

- ❖ Be treated with courtesy, consideration and respect for your dignity and individuality.
- ❖ Know the names and functions of all physicians and other health care professionals directly caring for you.
- ❖ Expeditiously receive the services of a translator or interpreter, if needed, to communicate with the hospital staff.
- ❖ Be informed of the names, titles, and duties of other health care professionals and educational institutions that participate in your treatment. You have the right to refuse to allow their participation.
- ❖ Be advised in writing of the hospital's rules regarding the conduct of patients and visitors.

- ❖ Receive a summary of your rights as a patient, including the name(s) and phone number(s) of the hospital staff to whom to direct questions or complaints about possible violations of your rights. If at least 10% of the hospital's service area speaks your native language, you can receive a copy of the summary in your native language.

Medical Records

- ❖ Have prompt access to your medical records. If your physician feels that this access is detrimental to your health, your next of kin or guardian has a right to see your records.
- ❖ Obtain a copy of your medical records at a reasonable fee within 30 days after submitting a written request to the hospital.

Cost of Hospital Care

- ❖ Receive a copy of the hospital payment rates, an itemized bill, if requested, and an explanation of the charges.
- ❖ Appeal any charges and receive an explanation of the appeals process.
- ❖ Obtain the hospital's help in securing public assistance and private health care benefits to which you may be entitled.

Discharge Planning

- ❖ Be informed about any need for follow-up care and receive assistance in obtaining this care required after your discharge from the hospital.
- ❖ Receive sufficient time before discharge to arrange for follow-up care after hospitalization.
- ❖ Be informed by the hospital about the discharge appeal process.

Privacy and Confidentiality

- ❖ Be provided with physical privacy during medical treatment and personal hygiene functions, unless you need assistance.
- ❖ Be assured confidentiality about your patient stay. Your medical and financial records shall not be released to anyone outside the hospital without your approval, unless you are transferred to another facility that requires the information, or release of the information is required and permitted by law.
- ❖ Have access to individual storage space for your private use and to safeguard your property if unable to assume that responsibility.

Freedom from Abuse and Restraints

- ❖ Be free from physical and mental abuse.
- ❖ Be free from restraints unless authorized by a physician for a limited period of time to protect your safety or the safety of others.

Civil Rights

- ❖ Receive treatment and medical services without discrimination based on race, age, religion, national origin, sex, sexual preferences, handicap, diagnosis, ability to pay or source of payment.
- ❖ Exercise your constitutional, civil and legal rights.

Questions, Complaints and Appeals

- ❖ Ask questions or file grievances about patient rights with a designated hospital staff member and receive a response within a reasonable period.
- ❖ Be provided, by the hospital, with contact information for the New Jersey Department of Health and Senior Services unit that handles questions and complaints.

See To File a Complaint on page 28 for details.

Health Information and Referral

These resources provide a good starting point in finding out how to get the best health care.

Health Care Conditions

❖ Asthma Information and Resources (DHSS)

NJ asthma programs and resources.

www.nj.gov/health/fhs/asthma

❖ Asthma Resource Directory (DHSS)

Asthma-related resources.

www.nj.gov/health/omh/asthmaresc.shtml

❖ Cancer Initiatives (DHSS)

Cancer resources, research, data, treatment and prevention from state and federal resources.

www.nj.gov/health/cancer

❖ Resources for Cancer Patients in New Jersey (NJCCR)

Information, resources, and support group locations.

www.nj.gov/health/ccr/patientresources.htm

❖ Cancer Control and Prevention (DHSS)

Various types of cancer and locations of resources by NJ county. www.nj.gov/health/ccp

❖ Cardiac Surgery in New Jersey (DHSS)

Coronary artery bypass graft surgery (CABG) inpatient death rates for NJ hospitals and physicians.

www.nj.gov/health/healthcarequality/documents/cardconsumer04.pdf

❖ Heart Health (AHA)

A wide range of cardiovascular and stroke topics. (800) 242-8721 or www.americanheart.org

❖ Healthy Lungs (ALA)

Strategies for fighting lung disease and its prevention, including asthma, smoking, environmental health, and research.

(800) LungUSA or www.lungusa.org

❖ Diabetes Information (ADA)

Information on diabetes. (800) 342-2383 or www.diabetes.org/about-diabetes.jsp

❖ Diabetes Prevention and Control (DHSS)

Diabetes resources, information, NJ data, and treatment. (609) 984-6137 or

www.nj.gov/health/fhs/diabindex.shtml

❖ Diabetes and Me (CDC)

From the basics to research, statistics, and educational publications. (800) CDC-INFO; TTY (888) 232-6348 or

www.cdc.gov/diabetes/consumer/index.htm

❖ Diagnosis/Treatment of Diseases (ACS, ADA, AHA, AACR)

Current research on diagnosis and treatment of specific diseases. www.PatientInform.org

❖ Health Conditions (CDC)

Disease prevention and control, environmental health, and health promotion. www.cdc.gov

❖ Health Data Fact Sheets (DHSS)

Fact sheets on selected NJ health topics, organized alphabetically by topic.

www.nj.gov/health/chs/monthlyobs.shtml

❖ Health Issues (NLM, NIH)

Various conditions, health news, clinical trials, medicines, encyclopedias and medical dictionary from NLM and NIH. www.medlineplus.gov

KEY

AACR: American Association for Cancer Research
ACS: American Cancer Society
ADA: American Diabetes Association
AHA: American Heart Association
AHRQ: Agency for Healthcare Research and Quality
ALA: American Lung Association
CDC: Centers for Disease Control and Prevention
CMS: Centers for Medicare and Medicaid Services
DHSS: NJ Department of Health and Senior Services
DOBI: NJ Department of Banking and Insurance
NIH: National Institutes of Health
NJCCR: NJ Commission on Cancer Research
NJEASE: New Jersey Easy Access, Single Entry
NLM: National Library of Medicine

Seniors

- ❖ **Medicare and You**
Health plans, prescription drug plans, and rights to help people with Medicare. (800) Medicare or www.medicare.gov/publications/pubs/pdf/10050.pdf or www.medicare.gov for general information.
- ❖ **Medicare Preventive Services to Keep You Healthy (CMS)**
Preventive information on various conditions as well as this brochure on covered preventive services. (800) Medicare or www.medicare.gov/health/overview.asp
- ❖ **MyMedicare.gov**
Internet access to your Medicare benefits, eligibility, enrollment (including prescription drug plans) and preventive health information. www.mymedicare.gov
- ❖ **NIHSeniorHealth.gov (NIA, NLM, NIH)**
Web-based authoritative and up-to-date health information. www.NIHSeniorHealth.gov
- ❖ **NJEASE (DHSS)**
One easy telephone call for information on important NJ programs and benefits for seniors. (877) 222-3737
- ❖ **Staying Healthy at 50+**
Guide to healthy habits, screening tests, and immunizations. (800) 358-9295 or www.ahrq.gov/ppip/50plus/50plus.pdf
- ❖ **Talking With Your Doctor: A Guide for Older People (NIH)**
Ways for seniors to discuss health concerns and medicines with physicians. (800) 222-2225; TTY 800-4225 or www.niapublications.org/pubs/talking/index.asp

Preventive Care

- ❖ **Everyday Choices for a Healthier Life Style (ACS, ADA, AHA)**
Disease prevention and early detection. www.everydaychoices.org
- ❖ **Healthfinder.gov**
Consumer health information from the Federal Government and others. www.healthfinder.gov
- ❖ **Preventive Care Booklets (AHRQ)**
Guides to healthy habits, screening tests, and immunizations. (800) 358-9295
 - **The Pocket Guide to Good Health for Adults.** www.ahrq.gov/ppip/adguide;
 - **The Child Health Guide.** www.ahrq.gov/ppip/childguide;
 - **Men: Stay Healthy at Any Age.** www.ahrq.gov/ppip/healthymen.htm;
 - **Women: Stay Healthy at Any Age.** www.ahrq.gov/ppip/healthywom.htm

General Health Information

- ❖ **Hospital and Consumer Information (Joint Commission)**
Find accredited hospitals, disease specific hospitals for treatment and learn how to find reliable health information on the internet. www.JointCommission.org/GeneralPublic
- ❖ **NJ HMO Performance Report (DOBI)**
Performance comparisons of NJ's managed care plans and how consumers rate them. www.nj.gov/dobi/lhactuar.htm#HMORports
- ❖ **Your Guide to Choosing Quality Health Care (AHRQ)**
Check lists and worksheets to help determine important criteria for choosing a doctor, a hospital, or treatment. www.ahrq.gov/consumer/qntool.htm

TO FILE A *Complaint...*

about how a New Jersey Hospital...

Treated/Billed You:

WRITE New Jersey Department of Health and Senior Services, Acute Care Assessment and Survey Unit; PO Box 358; 171 Jersey Street; Trenton, NJ 08625-0358.

E-MAIL hcsa@doh.state.nj.us

CALL Complaint hotline at **(800) 792-9770**.
(Note: The Department has no jurisdiction over hospital rates and billing practices but provides technical assistance to consumers.)

Handled Your Application for Charity Care:

WRITE New Jersey Department of Health and Senior Services, New Jersey Hospital Care Payment Assistance Program; PO Box 360; Trenton, NJ 08625-0360.

CALL New Jersey Hospital Care Payment Assistance Program at **(866) 588-5696**.

Billed You and You Are Covered By a New Jersey Health Maintenance Organization:

WRITE Department of Banking and Insurance, Consumer Protection Services, Managed Care Complaints and Appeals; PO Box 329; 20 West State Street, 9th floor; Trenton, NJ 08625-0329.

VISIT www.state.nj.us/dobi/mcfaqs.htm

CALL Office of Managed Care at **(888) 393-1062**.

Billed You and You Are Enrolled in Medicare:

CALL Medicare Program at **(800) MEDICARE**.

VISIT Medicare Program at www.medicare.gov

about a New Jersey Physician:

WRITE New Jersey Board of Medical Examiners; PO Box 183; Trenton, New Jersey 08625-0183.

VISIT www.njconsumeraffairs.gov/bme/bmeform.htm

CALL New Jersey Board of Medical Examiners at **(609) 826-7100** to obtain a complaint form.

about a New Jersey Nurse:

WRITE New Jersey Board of Nursing; PO Box 45010; Newark, NJ 07101.

CALL New Jersey Board of Nursing at **(973) 504-6457**.

Quality Improvement Advisory Committee (QIAC)

QIAC, an advisory committee for the Department of Health and Senior Services (DHSS), provided advice in the development of the report.

PAMELA ALLEN, RPH (Co-Chair)
Saint Barnabas
Healthcare System

MAUREEN BUENO, RN, PHD (Co-Chair)
Robert Wood Johnson
University Medical Group

PETER A. GROSS, MD (Co-Chair)
Hackensack University
Medical Center

ANDREA AUGHENBAUGH
NJ State Nurses Association

MARGARET BENNETT
Division of Medical Assistance
and Health Services
NJ Department of Human Services

DEBORAH BRIGGS
NJ Council of Teaching Hospitals

JOEL CANTOR, SCD
Center for State Health Policy
Rutgers University

DONALD CASEY, JR, MD
Atlantic Health System

LAWRENCE DOWNS, ESQ
Medical Society of New Jersey

MARY FUHRO
Saint James Hospital

BERNARD W. GERARD, JR
Health Professionals and
Allied Employees

MARY WILLIS GULBRONSON
NJ Carpenters Fund

ALINE HOLMES
New Jersey Hospital Association

SUZANNE IANNI
Hospital Alliance of New Jersey

ROBIN L. KEYACK, RPH
Virtua Health

DAVID KNOWLTON
NJ Health Care Quality Institute

LEN LETO
Division of Pension and Benefits
NJ Department of Treasury

FRANK LUMIA, MD

MICHAEL MUTTER
Valley Health System

BARBARA NIEDZ
Liberty Health Care System

JOYCE G. PONTBRIAND
Healthcare Quality Strategies, Inc.

LIZ READEAU
AtlantiCare Regional Medical Center

WARD SANDERS
NJ Association of Health Plans

MOLLY SULLIVAN
Capital Health System

LOU ANN LAMATTINA ULIANO
Consultant

DHSS STAFF

Cynthia Kirchner
Senior Policy Advisor to the Commissioner

Marcia Cook
Todd Honeycutt
Juana Jackson
Marcia Jaffe
Nancy Lin
Emmanuel Noggoh
Frances Prestianni
Sharon Sedlak

NJ General Acute Care Hospitals

AtlantiCare Regional Medical Center—City Division

1925 Pacific Avenue
Atlantic City, NJ 08401
(609) 344-4081
www.atlanticare.org

AtlantiCare Regional Medical Center—Mainland Division

Jimmie Leeds Road
Pomona, NJ 08240
(609) 652-1000
www.atlanticare.org

Barnert Hospital

680 Broadway
Paterson, NJ 07514
(973) 977-6600
www.barnert Hosp.org

Bayonne Medical Center

29th Street & Avenue E
Bayonne, NJ 07002
(201) 858-5000
www.bayonnemedicalcenter.com

Bayshore Community Hospital

727 North Beers Street
Holmdel, NJ 07733
(732) 739-5900
www.bchs.com

Bergen Regional Medical Center

230 E. Ridgewood Avenue
Paramus, NJ 07652
(201) 967-4000
www.bergenregional.com

Cape Regional Medical Center

Two Stone Harbor Boulevard
Cape May Court House, NJ 08210
(609) 463-2000
www.caperegional.com
Formerly Burdette Tomlin Memorial Hospital

Capital Health System at Fuld

750 Brunswick Avenue
Trenton, NJ 08638
(609) 394-6000
www.capitalhealth.org

Capital Health System at Mercer

446 Bellevue Avenue
Trenton, NJ 08618
(609) 394-4000
www.capitalhealth.org

Cathedral—St. James Hospital

155 Jefferson Street
Newark, NJ 07105
(973) 589-1300
www.cathedralhealth.org

Cathedral—St. Michael's Medical Center

111 Central Avenue
Newark, NJ 07102
(973) 877-5000
www.cathedralhealth.org

CentraState Medical Center

901 West Main Street
Freehold, NJ 07728
(732) 431-2000
www.centrastate.com

Chilton Memorial Hospital

97 West Parkway
Pompton Plains, NJ 07444
(973) 831-5000
www.chiltonmemorial.org

Christ Hospital

176 Palisade Avenue
Jersey City, NJ 07306
(201) 795-8200
www.chrithospital.org

Clara Maass Medical Center

One Clara Maass Drive
Belleville, NJ 07109
(973) 450-2000
www.sbhcs.com/hospitals/clara_maass

Columbus Hospital

495 North 13th Street
Newark, NJ 07107
(973) 268-1400
www.cathedralhealth.org

Community Medical Center

99 Route 37 West
Toms River, NJ 08755
(732) 557-8000
www.sbhcs.com/hospitals/community_medical

Cooper Hospital/University Medical Center

One Cooper Plaza
Camden, NJ 08103
(856) 342-2000
www.cooperhealth.org

Deborah Heart and Lung Center

200 Trenton Road
Browns Mills, NJ 08015
(609) 893-6611
www.deborah.org

East Orange General Hospital

300 Central Avenue
East Orange, NJ 07018
(973) 672-8400
www.ev.org

Englewood Hospital and Medical Center

350 Engle Street
Englewood, NJ 07631
(201) 894-3000
www.englewoodhospital.com

Greenville Hospital

1825 Kennedy Boulevard
Jersey City, NJ 07305
(201) 547-6100
www.libertyhealth.org

Hackensack University Medical Center

30 Prospect Avenue
Hackensack, NJ 07601
(201) 996-2000
www.humed.com

Hackettstown Regional Medical Center

651 Willow Grove Street
Hackettstown, NJ 07840
(908) 852-5100
www.hch.org

Appendix Two (continued)

Hoboken University Medical Center

308 Willow Avenue
Hoboken, NJ 07030
(201) 418-1000
www.hobokenumc.com
Formerly St. Mary Hospital (Hoboken)

Holy Name Hospital

718 Teaneck Road
Teaneck, NJ 07666
(201) 833-3000
www.holyname.org

Hunterdon Medical Center

2100 Wescott Drive
Flemington, NJ 08822
(908) 788-6100
www.hunterdonhealthcare.org

Jersey City Medical Center

355 Grand Street
Jersey City, NJ 07302
(201) 915-2000
www.libertyhealth.org

**Jersey Shore University
Medical Center**

1945 Route 33
Neptune, NJ 07753
(732) 775-5500
www.meridianhealth.com

**JFK Medical Center
Anthony M. Yelencsics
Community Hospital**

65 James Street
Edison, NJ 08818
(732) 321-7000
www.solarishs.org

**Kennedy Memorial Hospitals–UMC
Cherry Hill Division**

2201 Chapel Avenue West
Cherry Hill, NJ 08002
(856) 488-6500
www.kennedyhealth.org

**Kennedy Memorial Hospitals–UMC
Stratford Division**

18 East Laurel Road
Stratford, NJ 08084
(856) 346-6000
www.kennedyhealth.org

**Kennedy Memorial Hospitals–UMC
Washington Twp. Division**

435 Hurffville-Cross Keys Road
Turnersville, NJ 08012
(856) 582-2500
www.kennedyhealth.org

Kimball Medical Center

600 River Avenue
Lakewood, NJ 08701
(732) 363-1900
www.sbhcs.com/hospitals/
kimbal_medical

**Lourdes Medical Center of
Burlington County**

218 Sunset Road
Willingboro, NJ 08046
(609) 835-2900
www.lourdesnet.org

**Meadowlands Hospital
Medical Center**

55 Meadowlands Parkway
Secaucus, NJ 07096
(201) 392-3100
www.libertyhealth.org

Memorial Hospital of Salem County

310 Woodstown Road
Salem, NJ 08079
(856) 935-1000
www.mhschealth.com

Monmouth Medical Center

300 Second Avenue
Long Branch, NJ 07740
(732) 222-5200
www.sbhcs.com/hospitals/
monmouth_medical

Morristown Memorial Hospital

100 Madison Avenue
Morristown, NJ 07962
(973) 971-5000
www.atlantichealth.org

Mountainside Hospital

1 Bay Avenue
Montclair, NJ 07042
(973) 429-6000
www.mountainsidenow.com

**Muhlenberg Regional
Medical Center, Inc.**

Park Avenue & Randolph Road
Plainfield, NJ 07060
(908) 668-2000
www.solarishs.org

Newark Beth Israel Medical Center

201 Lyons Avenue
Newark, NJ 07112
(973) 926-7000
www.sbhcs.com/hospitals/
newark_beth_israel

Newton Memorial Hospital

175 High Street
Newton, NJ 07860
(973) 383-2121
www.itsyourlife.com

Ocean Medical Center

425 Jack Martin Boulevard
Brick, NJ 08724
(732) 840-2200
www.meridianhealth.com

Our Lady of Lourdes Medical Center

1600 Haddon Avenue
Camden, NJ 08103
(856) 757-3500
www.lourdesnet.org

Overlook Hospital

99 Beauvoir Avenue
Summit, NJ 07902
(908) 522-2000
www.atlantichealth.org

**Palisades Medical Center of
New York Presbyterian
Healthcare System**

7600 River Road
North Bergen, NJ 07047
(201) 854-5000
www.palisadesmedical.org

Pascack Valley Hospital

250 Old Hook Road
Westwood, NJ 07675
(201) 358-3000
www.pvhospital.org

Appendix Two (continued)

Raritan Bay Medical Center— Old Bridge Division

One Hospital Plaza
Old Bridge, NJ 08857
(732) 360-1000
www.rbmc.org

Raritan Bay Medical Center— Perth Amboy Division

530 New Brunswick Avenue
Perth Amboy, NJ 08861
(732) 442-3700
www.rbmc.org

Riverview Medical Center

One Riverview Plaza
Red Bank, NJ 07701
(732) 741-2700
www.meridianhealth.com

Robert Wood Johnson University Hospital

One Robert Wood Johnson Place
New Brunswick, NJ 08901
(732) 828-3000
www.rwjuh.edu

Robert Wood Johnson University Hospital at Hamilton

One Hamilton Health Place
Hamilton, NJ 08690
(609) 586-7900
www.rwjhamilton.org

Robert Wood Johnson University Hospital at Rahway

865 Stone Street
Rahway, NJ 07065
(732) 381-4200
www.rwjuhr.com

Shore Memorial Hospital

1 East New York Avenue
Somers Point, NJ 08244
(609) 653-3500
www.shorememorial.org

Somerset Medical Center

110 Rehill Avenue
Somerville, NJ 08876
(908) 685-2200
www.somersetmedicalcenter.com

South Jersey Healthcare Regional Medical Center

1505 West Sherman Avenue
Vineland, NJ 08360
(856) 641-8000
www.sjhs.com

South Jersey Hospital—Elmer

501 West Front Street
Elmer, NJ 08318
(856) 363-1000
www.sjhs.com

Southern Ocean County Hospital

1140 Route 72 West
Manahawkin, NJ 08050
(609) 597-6011
www.soch.com

St. Barnabas Medical Center

94 Old Short Hills Road
Livingston, NJ 07039
(973) 322-5000
www.sbhcs.com/hospitals/
saint_barnabas

St. Clare's Hospital—Denville

25 Pocono Road
Denville, NJ 07834
(973) 625-6000
www.saintclares.org

St. Clare's Hospital—Dover

400 West Blackwell Street
Dover, NJ 07801
(973) 989-3000
www.saintclares.org

St. Clare's Hospital—Sussex

20 Walnut Street
Sussex, NJ 07461
(973) 702-2600
www.saintclares.org

St. Francis Medical Center

601 Hamilton Avenue
Trenton, NJ 08629
(609) 599-5000
www.stfrancismedical.com

St. Joseph's Hospital and Medical Center

703 Main Street
Paterson, NJ 07503
(973) 754-2000
www.stjosephshealth.org

St. Joseph's Wayne Hospital

224 Hamburg Turnpike
Wayne, NJ 07470
(973) 942-6900
www.sjwh.org

St. Mary's Hospital (Passaic)

350 Boulevard
Passaic, NJ 07055
(973) 365-4300
www.smh-passaic.com

St. Peter's University Hospital

254 Easton Avenue
New Brunswick, NJ 08901
(732) 745-8600
www.saintpetersuh.com

Trinitas Hospital

225 Williamson Street
Elizabeth, NJ 07207
(908) 994-5000
www.trinitashospital.com

UMDNJ—University Hospital

150 Bergen Street
Newark, NJ 07103
(973) 972-4300
www.theuniversityhospital.com

Underwood—Memorial Hospital

509 N. Broad Street
Woodbury, NJ 08096
(856) 845-0100
www.umhospital.org

Union Hospital

1000 Galloping Hill Road
Union, NJ 07083
(908) 687-1900
www.sbhcs.com/hospitals/
union_hospital

Appendix Two *(continued)*

**University Medical Center
at Princeton**

253 Witherspoon Street
Princeton, NJ 08540
(609) 497-4000
www.princetonhcs.org

Valley Hospital

223 North Van Dien Avenue
Ridgewood, NJ 07450
(201) 447-8000
www.valleyhealth.com

**Virtua—Memorial Hospital of
Burlington County**

175 Madison Avenue
Mount Holly, NJ 08060
(609) 267-0700
www.virtua.org

**Virtua—West Jersey
Hospital Berlin**

100 Townsend Avenue
Berlin, NJ 08009
(856) 322-3000
www.virtua.org

**Virtua—West Jersey
Hospital Marlton**

90 Brick Road
Marlton, NJ 08053
(856) 355-6000
www.virtua.org

**Virtua—West Jersey
Hospital Voorhees**

101 Carnie Boulevard
Voorhees, NJ 08043
(856) 325-3000
www.virtua.org

Warren Hospital

185 Roseberry Street
Phillipsburg, NJ 08865
(908) 859-6700
www.warrenhospital.org

**William B. Kessler
Memorial Hospital**

600 S. White Horse Pike
Hammonton, NJ 08037
(609) 561-6700
www.kesslerhospital.org



www.nj.gov/health/hpr