

# NEW JERSEY DEPARTMENT OF CORRECTIONS

George W. Hayman, Acting Commissioner



## **OFFENDER CHARACTERISTICS REPORT**

**ON JANUARY 9, 2006**

Policy Analysis and Planning  
March 2006

## INTRODUCTION

*This report has been developed to provide information regarding offender characteristics in each correctional complex, major institution and satellite housing-unit under the jurisdiction of the New Jersey Department of Corrections on January 9, 2006. The selected characteristics compiled in this report are Base Offense at Admission, total Term at Admission, Ethnicity, Age, County of Commitment and Mandatory Minimum Term.*

*The Prison Complex includes, New Jersey State Prison, Central Reception and Assignment Facility, East Jersey State Prison, Bayside State prison, Riverfront State Prison, Mid-State, Southern State, Northern State Prison, South Woods, Edna Mahan Correctional Facility for Women and the Adult Diagnostic and Treatment Center (ADTC), a facility for adult male sex offenders.*

*NOTE: In our data tables we provide separate subtotals for ADTC and Edna Mahan Correctional Facility for Women due to the interest in these unique populations. The remainder of the Prison Complex is labeled "Prison Males."*

*The Youth Correctional Complex consists of Garden State Youth Correctional Facility, Albert C. Wagner Youth Correctional Facility and Mountainview Youth Correctional Facility.*

*"Offenders in Other Facilities" include state-sentenced inmates housed in county jails, Halfway Houses, Central Medical Unit (St. Francis Hospital) and those assigned to Electronic Monitoring/Home Confinement.*

*"Not Coded" are records for offenders in the correctional system for whom admission characteristics data had not been entered into the computerized information system as of January 9, 2006.*

## **HIGHLIGHTS**

- *Forty percent (40%) of all New Jersey Department of Corrections residents were committed for crimes against persons which include Homicide, Sexual Assault, Aggravated/Simple Assault, Assault, Robbery, Kidnapping, Other Sex Offenses and Other Person Offenses.*
- *Thirty-two percent (32%) of all Department of Corrections residents have been committed for narcotics law violations, including possession, sale and distribution. Eighty percent (80%) of all narcotics law violations are sale/distribution offenses.*
- *The median term for Department of Corrections residents is five years.*
- *Thirty percent (30%) of all New Jersey Department of Corrections residents were committed with maximum sentences of 10 years or more. Of the total, four percent (4%) are serving Life Sentences and 10 offenders are under Capital Sentence.*
- *Sixty-five percent (65%) of New Jersey Department of Corrections residents housed in the State System have sentences that include parole ineligibility terms.*
- *Forty-two percent (42%) of all residents in the New Jersey Department of Corrections are 30 years of age or younger. The median age for inmates in our adult facilities is 33.*
- *Sixty-two percent (62%) of New Jersey Department of Corrections residents are Black, while 20% are White and 18% are Hispanic.*
- *Of the 21 New Jersey counties, ten (Atlantic, Bergen, Camden, Essex, Hudson, Mercer, Middlesex, Monmouth, Passaic and Union) account for 80% of Total Department of Corrections Residents. Essex County is the highest contributor with 16%..*

## **NOTES**

### **DUE TO SOFTWARE AND ROUNDING:**

- **WORKSHEET ROW AND COLUMN TOTALS DO NOT ALWAYS EQUAL 100 PERCENT.**
- **PIE CHART PERCENTAGES DO NOT ALWAYS EQUAL 100%.**
- **PIE CHART PERCENTAGES MAY DIFFER SLIGHTLY FROM WORKSHEET PERCENTAGES.**
- **ACCOMPANYING NARRATIVES REFLECT PIE CHART PERCENTAGES.**

**TOTAL RESIDENTS IN NEW JERSEY STATE CORRECTIONAL INSTITUTIONS AND SATELLITES**

<b>TOTAL RESIDENTS</b>			<b>26,746</b>
<b>PRISON COMPLEX</b>	<b>18,624</b>	<b>YOUTH COMPLEX</b>	<b>4,358</b>
<b>ADTC</b>	<b>678</b>	<b>GARDEN STATE TOTAL</b>	<b>1,788</b>
Bayside – Main	1,291	Mountainview - Main	1,140
Bayside – Farm	610	Mountainview – Stokes	104
Bayside – Ancora	341	<b>MOUNTAINVIEW TOTAL</b>	<b>1,244</b>
<b>BAYSIDE TOTAL</b>	<b>2,242</b>		
		Wagner – Main	1,010
CRAF – Jones Farm	227	Wagner – Ad Seg	233
CRAF – Reception	885	Wagner – Adult Boot Camp	83
<b>CRAF TOTAL</b>	<b>1,112</b>	<b>WAGNER TOTAL</b>	<b>1,326</b>
East Jersey – Main	1,418	<b>OTHER FACILITIES</b>	<b>3,764</b>
East Jersey – Camp	129	Central Medical	16
		Halfway Houses	2,626
East Jersey – Ad Seg	385	County Jail	1,094
<b>EAST JERSEY TOTAL</b>	<b>1,932</b>	Electronic Monitoring (EM)	28
<b>EDNA MAHAN CORR FACILITY</b>	<b>1,102</b>		
<b>MID-STATE TOTAL</b>	<b>649</b>		
NJ State Prison – Ad Seg Female	10		
NJ State Prison – Main	1,810		
<b>NJ STATE PRISON TOTAL</b>	<b>1,820</b>		
Northern State – Main	2,154		
Northern State – Ad Seg Male	480		
<b>NORTHERN STATE TOTAL</b>	<b>2,634</b>		
<b>RIVERFRONT TOTAL</b>	<b>1,015</b>		
<b>SOUTHERN STATE TOTAL</b>	<b>2,063</b>		
<b>SOUTH WOODS TOTAL</b>	<b>3,377</b>		

## TABLE OF CONTENTS

REPORT NAME	PAGE
<i>OFFENDERS IN NEW JERSEY CORRECTIONAL INSTITUTIONS BY BASE OFFENSE</i>	7
<i>Prison Complex Offenders</i>	8-11
<i>Youth Complex Offenders</i>	12
<i>Adult Offenders in Other Facilities</i>	13
<i>OFFENDERS IN NEW JERSEY CORRECTIONAL INSTITUTIONS BY TOTAL TERM AT ADMISSION</i>	14
<i>Prison Complex Offenders</i>	15-18
<i>Youth Complex Offenders</i>	19
<i>Adult Offenders in Other Facilities</i>	20
<i>OFFENDERS IN NEW JERSEY CORRECTIONAL INSTITUTIONS BY MANDATORY MINIMUM TERM</i>	21
<i>Prison Complex Offenders</i>	22-25
<i>Youth Complex Offenders</i>	26
<i>Adult Offenders in Other Facilities</i>	27
<i>OFFENDERS IN NEW JERSEY CORRECTIONAL INSTITUTIONS BY AGE</i>	28
<i>Prison Complex Offenders</i>	29-32
<i>Youth Complex Offenders</i>	33
<i>Adult Offenders in Other Facilities</i>	34
<i>OFFENDERS IN NEW JERSEY CORRECTIONAL INSTITUTIONS BY ETHNIC IDENTIFICATION</i>	35
<i>Prison Complex Offenders</i>	36-39
<i>Youth Complex Offenders</i>	40
<i>Adult Offenders in Other Facilities</i>	41
<i>OFFENDERS IN NEW JERSEY CORRECTIONAL INSTITUTIONS BY COUNTY OF COMMITMENT</i>	42
<i>Prison Complex Offenders</i>	43-46
<i>Youth Complex Offenders</i>	47
<i>Adult Offenders in Other Facilities</i>	48

***BASE OFFENSE***

**OFFENDERS IN NEW JERSEY CORRECTIONAL INSTITUTIONS  
ON JANUARY 9, 2006, BY BASE OFFENSE**

In these tabulations, the base offense is that which is the most serious offense at the time of admission. These figures reflect base or controlling offenses at admission only, and do not include any offenses in addition to the base offense in the case of multiple sentences at admission. Additional sentences imposed following initial admission to the state correctional system are not included in these data.

- Violent offenses include homicide, sexual assault, aggravated and simple assault, robbery, kidnapping, other sex offenses and other person offenses (i.e. terroristic threats, coercion, larceny from a person, death by auto and negligent manslaughter).
- Property offenses include burglary, arson, theft, forgery, embezzlement, and receiving / possessing stolen property.
- Public policy offenses include racketeering, gambling, corruption, perjury, escape, bail jumping, juvenile and family related offenses, and conspiracy.
- Weapons offenses include weapon possession and operation.
- Drug violations include distribution, manufacture, possession, and use of drugs. Virtually all drug offenses are for sale and distribution rather than for mere possession.

**OFFENDERS IN CORRECTIONAL INSTITUTIONS BY BASE OFFENSE**

Base Offense	Total		Prison Males		Youth Complex		ADTC		Edna Mahan		Other Facilities	
	#	%	#	%	#	%	#	%	#	%	#	%
TOTAL OFFENDERS	26,746	100%	16,844	100%	4,358	100%	678	100%	1,102	100%	3,764	100%
Violent Offenses	10,708	40%	7,797	46%	1,425	33%	654	96%	386	35%	446	12%
Property Offenses	3,098	12%	1,958	12%	413	9%	2	0%	164	15%	561	15%
Miscellaneous	1,247	5%	819	5%	207	5%	0	0%	37	3%	184	5%
Weapons	1,096	4%	631	4%	289	7%	1	0%	14	1%	161	4%
Drugs	8,478	32%	4,601	27%	1,638	38%	7	1%	305	28%	1,927	51%
Not Coded	2,119	8%	1038	6%	386	9%	14	2%	196	18%	485	13%

- Inmates with violent offenses comprise 46% of the prison complex, 33% of the youth complex, 96% of ADTC, 35% of Edna Mahan, and 12% of other adult facilities.



### Prison Complex Offenders By Base Offense

Institution	Total	Violent Offenses	Homicide	Sexual Assault	Assault	Robbery	Kidnap	Other Sex	Other Person	Property	Public Policy	Weapons	Drugs	Not Coded
<b>Bayside Main</b>	1,291 100%	383 30%	70 5%	1 0%	78 6%	201 16%	8 1%	14 1%	11 1%	195 15%	86 7%	79 6%	455 35%	93 7%
<b>Bayside Farm</b>	610 100%	178 29%	46 8%	0 0%	43 7%	76 12%	4 1%	4 1%	5 1%	133 22%	39 6%	30 5%	192 31%	38 6%
<b>Bayside Ancora</b>	341 100%	22 6%	0 0%	0 0%	2 1%	11 3%	0 0%	1 0%	8 2%	79 23%	19 6%	15 4%	181 53%	25 7%
<b>Bayside Total</b>	2,242 100%	583 26%	116 5%	1 0%	123 5%	288 13%	12 1%	19 1%	24 1%	407 18%	144 6%	124 6%	828 37%	156 7%
<b>CRAF Jones Farm</b>	227 100%	1 0%	0 0%	0 0%	0 0%	1 0%	0 0%	0 0%	0 0%	62 27%	9 4%	0 0%	137 60%	18 8%
<b>CRAF Reception</b>	885 100%	181 20%	22 2%	17 2%	30 3%	73 8%	3 0%	21 2%	15 2%	137 15%	52 6%	25 3%	389 44%	101 11%
<b>CRAF Total</b>	1,112 100%	182 16%	22 2%	17 2%	30 3%	74 7%	3 0%	21 2%	15 1%	199 18%	61 5%	25 2%	526 47%	119 11%
<b>East Jersey Main</b>	1,418 100%	1,043 74%	503 35%	85 6%	58 4%	356 25%	34 2%	0 0%	7 0%	60 4%	39 3%	36 3%	182 13%	58 4%
<b>East Jersey Camp</b>	129 100%	24 19%	0 0%	0 0%	7 5%	16 12%	0 0%	1 1%	0 0%	30 23%	4 3%	4 3%	57 44%	10 8%
<b>East Jersey Ad Seg</b>	385 100%	176 46%	52 14%	11 3%	29 8%	73 19%	5 1%	5 1%	1 0%	37 10%	29 8%	23 6%	97 25%	23 6%
<b>East Jersey Total</b>	1,932 100%	1,243 64%	555 29%	96 5%	94 5%	445 23%	39 2%	6 0%	8 0%	127 7%	72 4%	63 3%	336 17%	91 5%

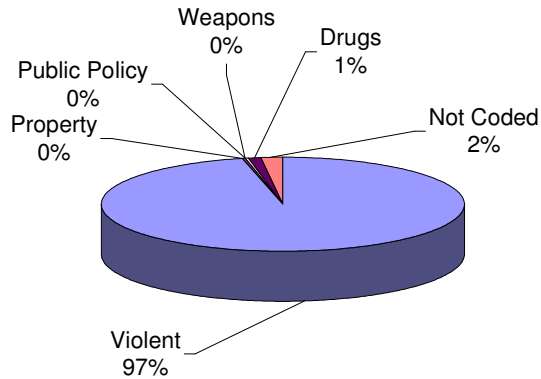
### Prison Complex Offenders By Base Offense

Institution	Total	Violent Offenses	Homicide	Sexual Assault	Assault	Robbery	Kidnap	Other Sex	Other Person	Property	Public Policy	Weapons	Drugs	Not Coded
Midstate	649 100%	255 39%	6 1%	97 15%	28 4%	33 5%	2 0%	80 12%	9 1%	100 15%	44 7%	27 4%	176 27%	47 7%
NJ State Prison Ad Seg Female	10 100%	6 60%	0 0%	1 10%	1 10%	2 20%	0 0%	2 20%	0 0%	2 20%	0 0%	0 0%	1 10%	1 10%
NJ State Prison Main	1,810 100%	1,526 84%	1,050 58%	101 6%	51 3%	265 15%	48 3%	6 0%	5 0%	49 3%	25 1%	21 1%	127 7%	62 3%
NJ State Prison Total	1,820 100%	1,532 84%	1,050 58%	102 6%	52 3%	267 15%	48 3%	8 0%	5 0%	51 3%	25 1%	21 1%	128 7%	63 3%
Northern Main	2,154 100%	1,064 49%	249 12%	87 4%	191 9%	484 22%	20 1%	13 1%	20 1%	207 10%	107 5%	92 4%	561 26%	123 6%
Northern Ad Seg Male	480 100%	266 55%	87 18%	14 3%	37 8%	113 24%	7 1%	4 1%	4 1%	46 10%	23 5%	20 4%	107 22%	18 4%
Northern Total	2,634 100%	1,330 50%	336 13%	101 4%	228 9%	597 23%	27 1%	17 1%	24 1%	253 10%	130 5%	112 4%	668 25%	141 5%
Riverfront	1,015 100%	543 53%	103 10%	137 13%	71 7%	178 18%	11 1%	31 3%	12 1%	96 9%	45 4%	40 4%	239 24%	52 5%
Southern	2,063 100%	446 22%	61 3%	6 0%	108 5%	225 11%	4 0%	12 1%	30 1%	340 16%	138 7%	99 5%	913 44%	127 6%
South Woods	3,377 100%	1,683 50%	382 11%	283 8%	215 6%	649 19%	44 1%	61 2%	49 1%	385 11%	160 5%	120 4%	787 23%	242 7%
<b>SUBTOTAL PRISON MALES</b>	<b>16,844 100%</b>	<b>7,797 46%</b>	<b>2,631 16%</b>	<b>840 5%</b>	<b>949 6%</b>	<b>2,756 16%</b>	<b>190 1%</b>	<b>255 2%</b>	<b>176 1%</b>	<b>1,958 12%</b>	<b>819 5%</b>	<b>631 4%</b>	<b>4,601 27%</b>	<b>1,038 6%</b>

## Prison Complex Offenders By Base Offense

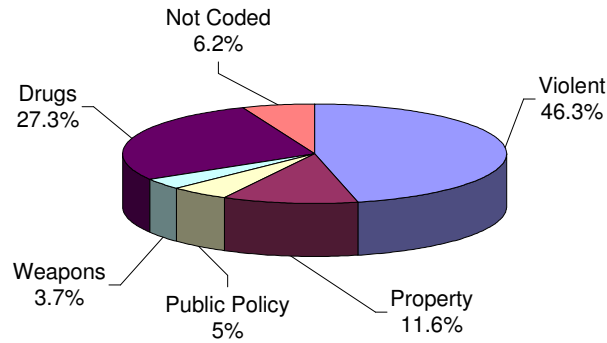
Institution	Total	Violent Offenses	Homicide	Sexual Assault	Assault	Robbery	Kidnap	Other Sex	Other Person	Property	Public Policy	Weapons	Drugs	Not Coded
ADTC	678	654	5	562	0	2	7	75	3	2	0	1	7	14
	100%	96%	1%	83%	0%	0%	1%	11%	0%	0%	0%	0%	1%	2%
SUBTOTAL	17,522	8,451	2,636	1,402	949	2,758	197	330	179	1,960	819	632	4,608	1,052
	100%	48%	15%	8%	5%	16%	1%	2%	1%	11%	5%	4%	26%	6%
Mahan - Female Prison	1,102	386	161	10	35	140	7	27	6	164	37	14	305	196
	100%	35%	15%	1%	3%	13%	1%	2%	1%	15%	3%	1%	28%	18%
Total Prison Complex	18,624	8,837	2,797	1,412	984	2,898	204	357	185	2,124	856	646	4,913	1,248
	100%	47%	15%	8%	5%	16%	1%	2%	1%	11%	5%	3%	26%	7%

### ADTC



Virtually all offenders at ADTC were committed for violent offenses

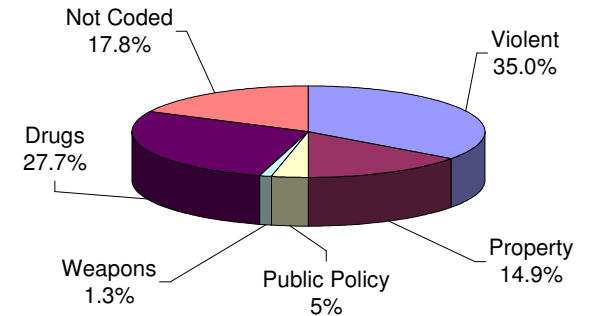
### PRISON MALES



Forty-six percent (46%) of male offenders in the prison complex were convicted of a violent offense (ADTC excluded).

Twenty-seven percent (27%) of all male prison complex offenders were convicted of drug offenses.

### FEMALE FACILITIES



Violent offenses were the most frequent commitment-offenses at Edna Mahan (35%).

Twenty-eight percent (28%) of female residents were committed for drug offenses.

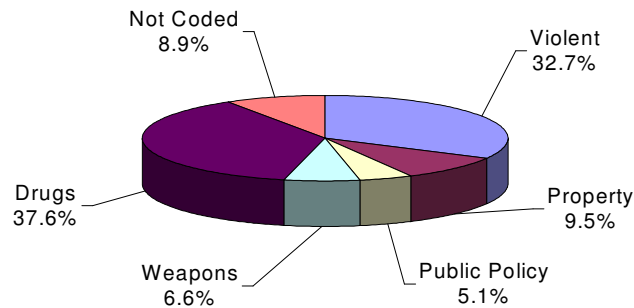
### Youth Complex Offenders By Base Offense

Institution	Total	Violent Offenses	Homicide	Sexual Assault	Assault	Robbery	Kidnap	Other Sex	Other Person	Property	Public Policy	Weapons	Drugs	Not Coded
Garden State	1,788	750	131	85	118	347	10	44	15	152	77	108	537	164
	100%	42%	7%	5%	7%	19%	1%	2%	1%	9%	4%	6%	30%	9%
Mountainview Main	1,140	213	20	2	47	123	1	4	16	142	58	82	530	115
	100%	19%	2%	0%	4%	11%	0%	0%	1%	12%	5%	7%	46%	10%
Mountainview Stokes	104	13	1	0	5	5	0	1	1	19	5	3	53	11
	100%	13%	1%	0%	5%	5%	0%	1%	1%	18%	5%	3%	51%	11%
Mountainview Total	1,244	226	21	2	52	128	1	5	17	161	63	85	583	126
	100%	18%	2%	0%	4%	10%	0%	0%	1%	13%	5%	7%	47%	10%
Wagner Main	1,010	343	34	9	73	201	5	11	10	75	53	80	383	76
	100%	34%	3%	1%	7%	20%	0%	1%	1%	7%	5%	8%	38%	8%
Wagner Ad Seg	233	103	11	7	22	59	1	0	3	18	12	9	80	11
	100%	44%	5%	3%	9%	25%	0%	0%	1%	8%	5%	4%	34%	5%
Wagner Adult Boot Camp	83	3	0	0	2	0	0	1	0	7	2	7	55	9
	100%	4%	0%	0%	2%	0%	0%	1%	0%	8%	2%	8%	66%	11%
Wagner Total	1,326	449	45	16	97	260	6	12	13	100	67	96	518	96
	100%	34%	3%	1%	7%	20%	0%	1%	1%	8%	5%	7%	39%	7%
Total Youth	4,358	1,425	197	103	267	735	17	61	45	413	207	289	1,638	386
	100%	33%	5%	2%	6%	17%	0%	1%	1%	9%	5%	7%	38%	9%

## Offenders In Other Facilities By Base Offense

Institution	Total	Violent Offenses	Homicide	Sexual Assault	Assault	Robbery	Kidnap	Other Sex	Other Person	Property	Public Policy	Weapons	Drugs	Not Coded
Central Medical	16	6	2	1	1	2	0	0	0	4	0	0	5	1
	100%	38%	13%	6%	6%	13%	0%	0%	0%	25%	0%	0%	31%	6%
County Jail	1,094	122	9	18	27	45	0	9	14	154	60	36	379	343
	100%	11%	1%	2%	2%	4%	0%	1%	1%	14%	5%	3%	35%	31%
EM/HC	28	0	0	0	0	0	0	0	0	3	2	0	21	2
	100%	0%	0%	0%	0%	0%	0%	0%	0%	11%	7%	0%	75%	7%
Halfway House	2,626	318	67	0	70	162	3	8	8	400	122	125	1,522	139
	100%	12%	3%	0%	3%	6%	0%	0%	0%	15%	5%	5%	58%	5%
Total Other Facilities	3,764	446	78	19	98	209	3	17	22	561	184	161	1,927	485
	100%	12%	2%	1%	3%	6%	0%	0%	1%	15%	5%	4%	51%	13%

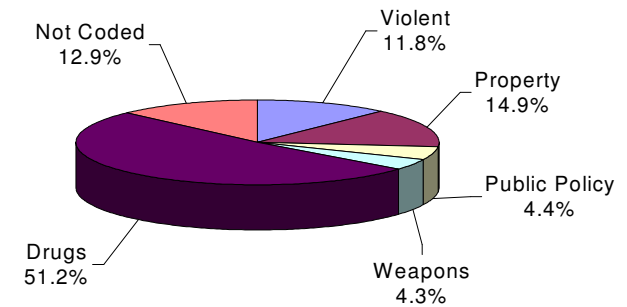
### YOUTH COMPLEX



Thirty-eight percent (38%) of offenders housed in the youth complex were incarcerated for drug offenses.

Thirty-three percent (33%) of offenders housed in the youth complex were incarcerated for violent offenses and 9% for property offenses

### OFFENDERS IN OTHER FACILITIES



Offenders housed in county jails and halfway houses are less serious offenders than those found in the prison complex facilities (i.e. 12% violent offenses vs. 46% violent offenses in prison complex).

Fifty-one percent (51%) of offenders housed in county jails and halfway houses were committed for drug offenses.

***TOTAL MAXIMUM TERM AT ADMISSION***

**OFFENDERS IN NEW JERSEY CORRECTIONAL INSTITUTIONS  
ON JANUARY 9, 2006, BY TOTAL TERM AT ADMISSION**

Total term at admission is the total maximum term imposed for each offender at the time of commitment from the community or from parole. This includes the aggregate term for those admitted with multiple sentences. Additional sentences received following initial admission are not reflected or included in the data.

**OFFENDERS IN NEW JERSEY CORRECTIONAL INSTITUTIONS BY TOTAL TERM AT ADMISSION**

Total Term	Total		Prison Males		Youth Complex		ADTC		Edna Mahan		Other Facilities	
	#	%	#	%	#	%	#	%	#	%	#	%
TOTAL OFFENDERS	26,746	100%	16,844	100%	4,358	100%	678	100%	1,102	100%	3,764	100%
1-2 Years	919	3%	541	3%	177	4%	2	0%	70	6%	129	3%
3 Years	4,197	16%	2,078	12%	1,052	24%	26	4%	271	25%	770	20%
4 Years	3,730	14%	1,987	12%	778	18%	34	5%	171	16%	760	20%
5 Years	4,668	17%	2,688	16%	924	21%	62	9%	163	15%	831	22%
6 Years	1,201	4%	686	4%	251	6%	31	5%	43	4%	190	5%
7 Years	1,957	7%	1,197	7%	344	8%	72	11%	72	7%	272	7%
8-9 Years	1,456	5%	1,003	6%	198	5%	28	4%	35	3%	192	5%
10 Years	1,761	7%	1,198	7%	242	6%	109	16%	59	5%	153	4%
11-14 Years	988	4%	725	4%	122	3%	65	10%	32	3%	44	1%
15 Years	776	3%	592	4%	69	2%	56	8%	27	2%	32	1%
16-20 Years	1,197	4%	959	6%	78	2%	70	10%	36	3%	54	1%
20+ Years	2,243	8%	1,942	12%	62	1%	119	18%	60	5%	60	2%
Life	1,112	4%	1,078	6%	4	0%	3	0%	24	2%	3	0%
Capital	10	0%	10	0%	0	0%	0	0%	0	0%	0	0%
Not Coded	531	2%	160	1%	57	1%	1	0%	39	4%	274	7%

Among New Jersey Adult Correctional Offenders:

- The median term for adult offenders is 5 years.
- Fifty percent (50%) are serving terms of 1 -5 years.
- Sixteen percent (16%) are serving terms of 6-9 years.
- Thirty percent (30%) are serving terms of 10 years or more, which includes 1,112 offenders serving life and 10 capital sentences.
- Two percent (2%) were not coded.

### Prison Complex Offenders By Total Term At Admission

Institution	Total	1-2 Years	3 Years	4 Years	5 Years	6 Years	7 Years	8-9 Years	10 Years	11-14 Years	15 Years	16-20 Years	20+ Years	Life	Capital	Not Coded
<b>Bayside</b>	1,291	78	197	177	256	55	122	110	98	59	29	45	41	14	0	10
<b>Main</b>	100%	6%	15%	14%	20%	4%	9%	9%	8%	5%	2%	3%	3%	1%	0%	1%
<b>Bayside</b>	610	42	105	117	104	28	37	24	47	24	10	35	32	0	0	5
<b>Farm</b>	100%	7%	17%	19%	17%	5%	6%	4%	8%	4%	2%	6%	5%	0%	0%	1%
<b>Bayside</b>	341	32	88	69	54	17	30	23	15	1	3	3	0	0	0	6
<b>Ancora</b>	100%	9%	26%	20%	16%	5%	9%	7%	4%	0%	1%	1%	0%	0%	0%	2%
<b>Bayside Total</b>	2,242	152	390	363	414	100	189	157	160	84	42	83	73	14	0	21
	100%	7%	17%	16%	18%	4%	8%	7%	7%	4%	2%	4%	3%	1%	0%	1%
<b>CRAF</b>	227	14	105	64	26	5	2	1	0	0	0	0	0	0	0	10
<b>Jones Farm</b>	100%	6%	46%	28%	11%	2%	1%	0%	0%	0%	0%	0%	0%	0%	0%	4%
<b>CRAF</b>	885	56	235	158	172	38	44	35	38	29	18	19	11	4	0	28
<b>Reception</b>	100%	6%	27%	18%	19%	4%	5%	4%	4%	3%	2%	2%	1%	0%	0%	3%
<b>CRAF Total</b>	1,112	70	340	222	198	43	46	36	38	29	18	19	11	4	0	38
	100%	6%	31%	20%	18%	4%	4%	3%	3%	3%	2%	2%	1%	0%	0%	3%
<b>East Jersey</b>	1,418	11	48	43	92	22	53	51	97	118	109	168	424	179	0	3
<b>Main</b>	100%	1%	3%	3%	6%	2%	4%	4%	7%	8%	8%	12%	30%	13%	0%	0%
<b>East Jersey</b>	129	4	53	19	20	2	6	2	9	1	5	4	1	0	0	3
<b>Camp</b>	100%	3%	41%	15%	16%	2%	5%	2%	7%	1%	4%	3%	1%	0%	0%	2%
<b>East Jersey</b>	385	10	60	37	63	25	25	29	36	20	12	24	24	19	0	1
<b>Ad Seg</b>	100%	3%	16%	10%	16%	6%	6%	8%	9%	5%	3%	6%	6%	5%	0%	0%
<b>East Jersey Total</b>	1,932	25	161	99	175	49	84	82	142	139	126	196	449	198	0	7
	100%	1%	8%	5%	9%	3%	4%	4%	7%	7%	7%	10%	23%	10%	0%	0%



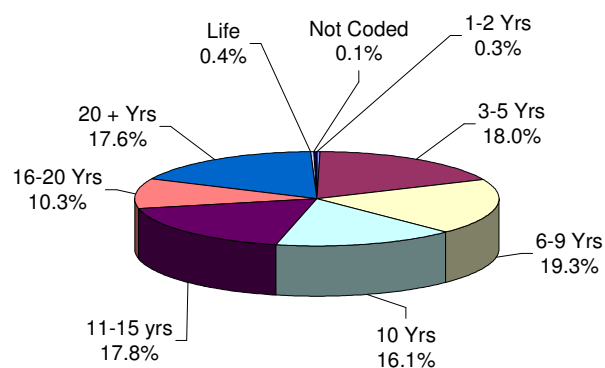
### Prison Complex Offenders By Total Term At Admission

Institution	Total	1-2 Years	3 Years	4 Years	5 Years	6 Years	7 Years	8-9 Years	10 Years	11-14 Years	15 Years	16-20 Years	20+ Years	Life	Capital	Not Coded
Midstate	649 100%	35 5%	132 20%	124 19%	142 22%	37 6%	69 11%	43 7%	24 4%	15 2%	8 1%	10 2%	5 1%	0 0%	0 0%	5 1%
NJ State Prison Ad Seg Female	10 100%	0 0%	2 20%	3 30%	1 10%	0 0%	2 20%	0 0%	0 0%	0 0%	0 0%	1 10%	0 0%	1 10%	0 0%	0 0%
NJ State Prison Main	1,810 100%	12 1%	41 2%	50 3%	70 4%	20 1%	26 1%	23 1%	57 3%	22 1%	23 1%	60 3%	672 37%	703 39%	10 1%	21 1%
NJ State Prison Total	1,820 100%	12 1%	43 2%	53 3%	71 4%	20 1%	28 2%	23 1%	57 3%	22 1%	23 1%	61 3%	672 37%	704 39%	10 1%	21 1%
Northern Main	2,154 100%	40 2%	204 9%	227 11%	344 16%	94 4%	190 9%	163 8%	224 10%	122 6%	94 4%	185 9%	210 10%	41 2%	0 0%	16 1%
Northern Ad Seg Male	480 100%	5 1%	53 11%	52 11%	71 15%	12 3%	36 8%	37 8%	35 7%	23 5%	16 3%	51 11%	63 13%	23 5%	0 0%	3 1%
Northern Total	2,634 100%	45 2%	257 10%	279 11%	415 16%	106 4%	226 9%	200 8%	259 10%	145 6%	110 4%	236 9%	273 10%	64 2%	0 0%	19 1%
Riverfront	1,015 100%	11 1%	70 7%	115 11%	158 16%	57 6%	104 10%	88 9%	105 10%	70 7%	44 4%	60 6%	106 10%	20 2%	0 0%	7 1%
Southern	2,063 100%	90 4%	313 15%	370 18%	545 26%	136 7%	201 10%	134 6%	117 6%	38 2%	37 2%	30 1%	34 2%	4 0%	0 0%	14 1%
South Woods	3,377 100%	101 3%	372 11%	362 11%	570 17%	138 4%	250 7%	240 7%	296 9%	183 5%	184 5%	264 8%	319 9%	70 2%	0 0%	28 1%
<b>SUBTOTAL PRISON MALES</b>	<b>16,844 100%</b>	<b>541 3%</b>	<b>2,078 12%</b>	<b>1,987 12%</b>	<b>2,688 16%</b>	<b>686 4%</b>	<b>1,197 7%</b>	<b>1,003 6%</b>	<b>1,198 7%</b>	<b>725 4%</b>	<b>592 4%</b>	<b>959 6%</b>	<b>1,942 12%</b>	<b>1,078 6%</b>	<b>10 0%</b>	<b>160 1%</b>

## Prison Complex Offenders By Total Term At Admission

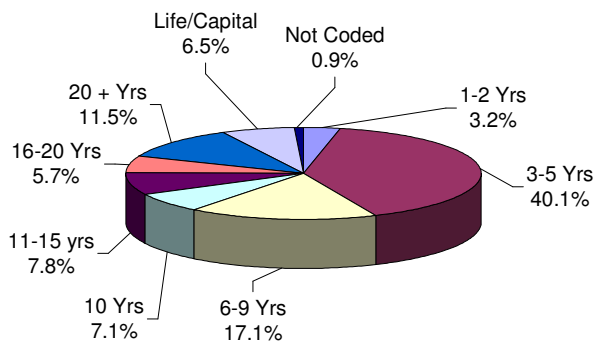
Institution	Total	1-2 Years	3 Years	4 Years	5 Years	6 Years	7 Years	8-9 Years	10 Years	11-14 Years	15 Years	16-20 Years	20+ Years	Life	Capital	Not Coded
ADTC	678 100%	2 0%	26 4%	34 5%	62 9%	31 5%	72 11%	28 4%	109 16%	65 10%	56 8%	70 10%	119 18%	3 0%	0 0%	1 0%
<b>SUBTOTAL</b>	<b>17,522 100%</b>	<b>543 3%</b>	<b>2,104 12%</b>	<b>2,021 12%</b>	<b>2,750 16%</b>	<b>717 4%</b>	<b>1,269 7%</b>	<b>1,031 6%</b>	<b>1,307 7%</b>	<b>790 5%</b>	<b>648 4%</b>	<b>1,029 6%</b>	<b>2,061 12%</b>	<b>1,081 6%</b>	<b>10 0%</b>	<b>161 1%</b>
Mahan - Female Prison	1,102 100%	70 6%	271 25%	171 16%	163 15%	43 4%	72 7%	35 3%	59 5%	32 3%	27 2%	36 3%	60 5%	24 2%	0 0%	39 4%
<b>Total Prison Complex</b>	<b>18,624 100%</b>	<b>613 3%</b>	<b>2,375 13%</b>	<b>2,192 12%</b>	<b>2,913 16%</b>	<b>760 4%</b>	<b>1,341 7%</b>	<b>1,066 6%</b>	<b>1,366 7%</b>	<b>822 4%</b>	<b>675 4%</b>	<b>1,065 6%</b>	<b>2,121 11%</b>	<b>1,105 6%</b>	<b>10 0%</b>	<b>200 1%</b>

### ADTC



The median term at ADTC is 10 years.

### PRISON MALES

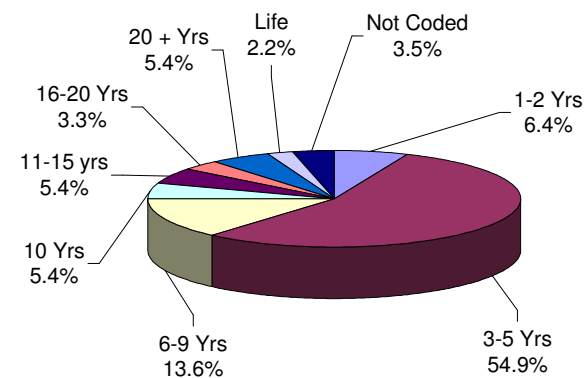


The median term for prison males is 7 years.

Twenty-four percent (24%) of all prison males are serving sentences of 16 years or more.

Eighty-one percent (81%) of all offenders at New Jersey State Prison are serving sentences of 16 years or more, with 704 life sentences and 10 capital cases.

### FEMALE FACILITIES



The median term at Edna Mahan is 5 years.

Sixty-one percent (61%) of the female offenders at Edna Mahan Correctional Facility for Women are serving sentences of 5 years or less.

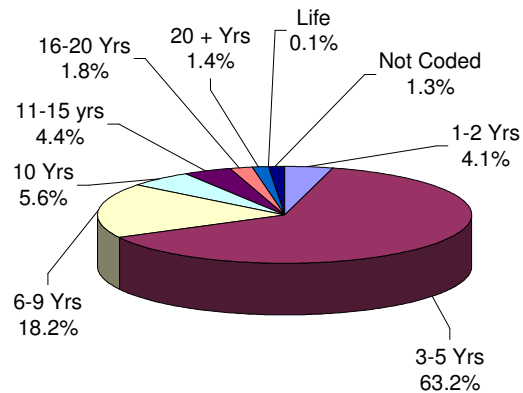
### Youth Complex Offenders By Total Term At Admission

Institution	Total	1-2 Years	3 Years	4 Years	5 Years	6 Years	7 Years	8-9 Years	10 Years	11-14 Years	15 Years	16-20 Years	20+ Years	Life	Capital	Not Coded
Garden State	1,788 100%	71 4%	345 19%	278 16%	378 21%	123 7%	145 8%	94 5%	119 7%	55 3%	45 3%	56 3%	46 3%	4 0%	0 0%	29 2%
Mountainview Main	1,140 100%	51 4%	370 32%	252 22%	260 23%	48 4%	78 7%	31 3%	21 2%	6 1%	0 0%	4 0%	4 0%	0 0%	0 0%	15 1%
Mountainview Stokes	104 100%	8 8%	46 44%	19 18%	19 18%	3 3%	3 3%	3 3%	1 1%	0 0%	0 0%	0 0%	0 0%	0 0%	0 0%	2 2%
Mountainview Total	1,244 100%	59 5%	416 33%	271 22%	279 22%	51 4%	81 7%	34 3%	22 2%	6 0%	0 0%	4 4%	4 4%	0 0%	0 0%	17 1%
Wagner Main	1,010 100%	39 4%	212 21%	170 17%	196 19%	61 6%	94 9%	61 6%	85 8%	44 4%	22 2%	12 1%	5 0%	0 0%	0 0%	9 1%
Wagner Ad Seg	233 100%	8 3%	49 21%	41 18%	43 18%	14 6%	23 10%	8 3%	16 7%	17 7%	2 1%	5 2%	7 3%	0 0%	0 0%	0 0%
Wagner Adult Boot Camp	83 100%	0 0%	30 36%	18 22%	28 34%	2 2%	1 1%	1 1%	0 0%	0 0%	0 0%	1 1%	0 0%	0 0%	0 0%	2 2%
Wagner Total	1,326 100%	47 4%	291 22%	229 17%	267 20%	77 6%	118 9%	70 5%	101 8%	61 5%	24 2%	18 1%	12 1%	0 0%	0 0%	11 1%
Total Youth	4,358 100%	177 4%	1,052 24%	778 18%	924 21%	251 6%	344 8%	198 5%	242 6%	122 3%	69 2%	78 2%	62 1%	4 0%	0 0%	57 1%

### Offenders In Other Facilities By Total Term At Admission

Institution	Total	1-2 Years	3 Years	4 Years	5 Years	6 Years	7 Years	8-9 Years	10 Years	11-14 Years	15 Years	16-20 Years	20+ Years	Life	Capital	Not Coded
Central Medical	16 100%	0 0%	0 0%	3 19%	3 19%	2 13%	1 6%	2 13%	1 6%	0 0%	1 6%	1 6%	1 6%	1 6%	0 0%	0 0%
County Jail	1,094 100%	78 7%	256 23%	181 17%	145 13%	33 3%	49 4%	32 3%	31 3%	13 1%	5 0%	9 1%	3 0%	2 0%	0 0%	257 23%
EM/HC	28 100%	1 4%	9 32%	6 21%	7 25%	1 4%	1 4%	1 4%	1 4%	0 0%	0 0%	1 4%	0 0%	0 0%	0 0%	0 0%
Halfway House	2,626 100%	50 2%	505 19%	570 22%	676 26%	154 6%	221 8%	157 6%	120 5%	31 1%	26 1%	43 2%	56 2%	0 0%	0 0%	17 1%
<b>Total Other Facilities</b>	<b>3,764 100%</b>	<b>129 3%</b>	<b>770 20%</b>	<b>760 20%</b>	<b>831 22%</b>	<b>190 5%</b>	<b>272 7%</b>	<b>192 5%</b>	<b>153 4%</b>	<b>44 1%</b>	<b>32 1%</b>	<b>54 1%</b>	<b>60 2%</b>	<b>3 0%</b>	<b>0 0%</b>	<b>274 7%</b>

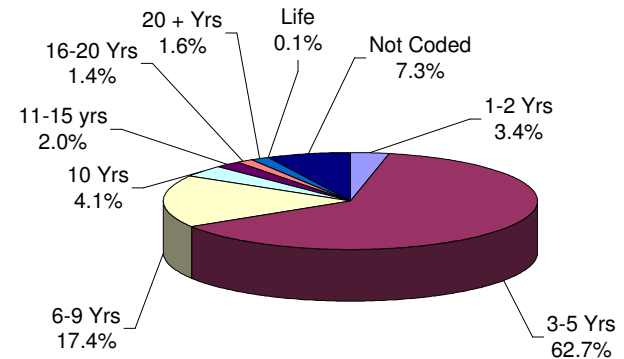
#### YOUTH COMPLEX



The median youth complex term is 5 years.

Four (4) youth complex offenders are serving life sentences.

#### OFFENDERS IN OTHER FACILITIES



The median term for offenders housed in 'other facilities' is 5 years.

Sixty-six percent (66%) of offenders housed in 'other facilities' are serving terms of 5 years or less.

***MANDATORY MINIMUM TERM***

**OFFENDERS IN NEW JERSEY CORRECTIONAL INSTITUTIONS  
ON JANUARY 9, 2006, BY MANDATORY MINIMUM TERM**

In New Jersey, since 1979, the courts have utilized mandatory minimum sentences. This means that an offender must serve the entire minimum sentence before being eligible for parole consideration. Mandatory minimum terms are not reduced by earned credits (commutation, minimum security or work).

**OFFENDERS IN CORRECTIONAL INSTITUTIONS BY MANDATORY MINIMUM TERM**

Mandatory Minimum Term	Total		Prison Males		Youth Complex		ADTC		Edna Mahan		Other Facilities	
	#	%	#	%	#	%	#	%	#	%	#	%
TOTAL OFFENDERS	17,286	100%	11,479	100%	2,804	100%	382	100%	560	100%	2,061	100%
<18 Months	1,293	7%	546	5%	438	16%	0	0%	34	6%	275	13%
18 Months	875	5%	416	4%	209	7%	0	0%	25	4%	225	11%
2 Years	2,657	15%	1,522	13%	462	16%	5	1%	77	14%	591	29%
3 Years	2,539	15%	1,526	13%	435	16%	15	4%	76	14%	487	24%
4 Years	1,548	9%	957	8%	338	12%	35	9%	60	11%	158	8%
5 Years	1,918	11%	1,256	11%	371	13%	87	23%	83	15%	121	6%
6-9 Years	2,049	12%	1,452	13%	307	11%	96	25%	62	11%	132	6%
10 Years	654	4%	508	4%	61	2%	40	10%	20	4%	25	1%
11-14 Years	923	5%	734	6%	95	3%	34	9%	37	7%	23	1%
15 Years	434	3%	349	3%	21	1%	32	8%	18	3%	14	1%
16-19 Years	408	2%	345	3%	29	1%	12	3%	17	3%	5	0%
20-24 Years	343	2%	305	3%	18	1%	9	2%	9	2%	2	0%
25-29 Years	309	2%	290	3%	4	0%	9	2%	5	1%	1	0%
30 Years	769	4%	725	6%	12	0%	3	1%	28	5%	1	0%
30+ Years	567	3%	548	5%	4	0%	5	1%	9	2%	1	0%

- Sixty-five percent (65%) of all adult offenders have mandatory minimum terms (17,286 out of 26, 746).
- The median mandatory minimum term is 4 years.
- Sixteen percent (16%) of those with mandatory minimum terms have mandatory minimum terms of 15 years or more.

### Prison Complex Offenders By Mandatory Minimum Term

Institution	Total	< 18 Months	18 Months	2 Years	3 Years	4 Years	5 Years	6-9 Years	10 Years	11-14 Years	15 Years	16-19 Years	20-24 Years	25-29 Years	30 Years	30+ Years
Bayside	821	55	43	144	162	101	118	117	34	24	9	5	3	5	1	0
Main	100%	7%	5%	18%	20%	12%	14%	14%	4%	3%	1%	1%	0%	1%	0%	0%
Bayside	323	18	9	63	70	25	36	55	25	11	4	1	1	4	1	0
Farm	100%	6%	3%	20%	22%	8%	11%	17%	8%	3%	1%	0%	0%	1%	0%	0%
Bayside	171	17	21	55	51	10	9	8	0	0	0	0	0	0	0	0
Ancora	100%	10%	12%	32%	30%	6%	5%	5%	0%	0%	0%	0%	0%	0%	0%	0%
Bayside Total	1,315	90	73	262	283	136	163	180	59	35	13	6	4	9	2	0
	100%	7%	6%	20%	22%	10%	12%	14%	4%	3%	1%	0%	0%	1%	0%	0%
CRAF	75	31	14	23	3	1	0	3	0	0	0	0	0	0	0	0
Jones Farm	100%	41%	19%	31%	4%	1%	0%	4%	0%	0%	0%	0%	0%	0%	0%	0%
CRAF	427	62	30	94	90	36	38	43	7	19	2	3	2	0	1	0
Reception	100%	15%	7%	22%	21%	8%	9%	10%	2%	4%	0%	1%	0%	0%	0%	0%
CRAF Total	502	93	44	117	93	37	38	46	7	19	2	3	2	0	1	0
	100%	19%	9%	23%	19%	7%	8%	9%	1%	4%	0%	1%	0%	0%	0%	0%
East Jersey	1,192	14	10	27	56	39	94	143	99	170	98	103	70	59	163	47
Main	100%	1%	1%	2%	5%	3%	8%	12%	8%	14%	8%	9%	6%	5%	14%	4%
East Jersey	59	12	3	13	8	4	9	8	1	1	0	0	0	0	0	0
Camp	100%	20%	5%	22%	14%	7%	15%	14%	2%	2%	0%	0%	0%	0%	0%	0%
East Jersey	259	15	14	25	29	30	38	43	12	15	3	7	3	4	19	2
Ad Seg	100%	6%	5%	10%	11%	12%	15%	17%	5%	6%	1%	3%	1%	2%	7%	1%
East Jersey	1,510	41	27	65	93	73	141	194	112	186	101	110	73	63	182	49
Total	100%	3%	2%	4%	6%	5%	9%	13%	7%	12%	7%	7%	5%	4%	12%	3%

### Prison Complex Offenders By Mandatory Minimum Term

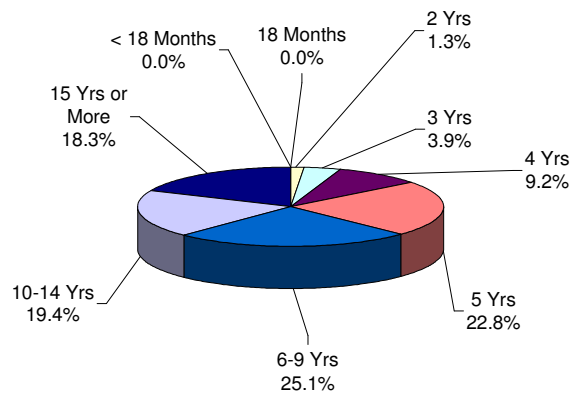
Institution	Total	< 18 Months	18 Months	2 Years	3 Years	4 Years	5 Years	6-9 Years	10 Years	11-14 Years	15 Years	16-19 Years	20-24 Years	25-29 Years	30 Years	30+ Years
Midstate	288 100%	26 9%	27 9%	71 25%	77 27%	32 11%	24 8%	24 8%	3 1%	2 1%	2 1%	0 0%	0 0%	0 0%	0 0%	0 0%
NJ State Prison Ad Seg Female	4 100%	0 0%	0 0%	0 0%	0 0%	0 0%	2 0%	0 0%	0 0%	0 0%	0 0%	1 0%	0 0%	1 0%	0 0%	0 0%
NJ State Prison Main	1,551 100%	19 1%	9 1%	40 3%	40 3%	17 1%	43 3%	58 4%	34 2%	46 3%	34 2%	43 3%	120 8%	159 10%	435 28%	454 29%
NJ State Prison Total	1,555 100%	19 1%	9 1%	40 3%	40 3%	17 1%	45 3%	58 4%	34 2%	46 3%	34 2%	44 3%	120 8%	160 10%	435 28%	454 29%
Northern Main	1,597 100%	61 4%	45 3%	186 12%	219 14%	162 10%	218 14%	266 17%	79 5%	154 10%	50 3%	63 4%	29 2%	14 1%	39 2%	12 1%
Northern Ad Seg Male	335 100%	14 4%	17 5%	24 7%	33 10%	29 9%	41 12%	51 15%	26 8%	30 9%	22 7%	14 4%	12 4%	4 1%	11 3%	7 2%
Northern Total	1,932 100%	75 4%	62 3%	210 11%	252 13%	191 10%	259 13%	317 16%	105 5%	184 10%	72 4%	77 4%	41 2%	18 1%	50 3%	19 1%
Riverfront	758 100%	21 3%	20 3%	95 13%	106 14%	83 11%	119 16%	135 18%	52 7%	46 6%	25 3%	18 2%	14 2%	9 1%	8 1%	7 1%
Southern	1,278 100%	89 7%	82 6%	347 27%	301 24%	165 13%	156 12%	93 7%	22 2%	12 1%	6 0%	1 0%	1 0%	2 0%	1 0%	0 0%
South Woods	2,341 100%	92 4%	72 3%	315 13%	281 12%	223 10%	311 13%	405 17%	114 5%	204 9%	94 4%	86 4%	50 2%	29 1%	46 2%	19 1%
<b>SUBTOTAL PRISON MALES</b>	<b>11,479 100%</b>	<b>546 5%</b>	<b>416 4%</b>	<b>1,522 13%</b>	<b>1,526 13%</b>	<b>957 8%</b>	<b>1,256 11%</b>	<b>1,452 13%</b>	<b>508 4%</b>	<b>734 6%</b>	<b>349 3%</b>	<b>345 3%</b>	<b>305 3%</b>	<b>290 3%</b>	<b>725 6%</b>	<b>548 5%</b>



## Prison Complex Offenders By Mandatory Minimum Term

Institution	Total	< 18 Months	18 Months	2 Years	3 Years	4 Years	5 Years	6-9 Years	10 Years	11-14 Years	15 Years	16-19 Years	20-24 Years	25-29 Years	30 Years	30+ Years
ADTC	382	0	0	5	15	35	87	96	40	34	32	12	9	9	3	5
	100%	0%	0%	1%	4%	9%	23%	25%	10%	9%	8%	3%	2%	2%	1%	1%
Subtotal	11,861	546	416	1,527	1,541	992	1,343	1,548	548	768	381	357	314	299	728	553
	100%	5%	4%	13%	13%	8%	11%	13%	5%	6%	3%	3%	3%	3%	6%	5%
Mahan - Female Prison	560	34	25	77	76	60	83	62	20	37	18	17	9	5	28	9
	100%	6%	4%	14%	14%	11%	15%	11%	4%	7%	3%	3%	2%	1%	5%	2%
Total Prison Complex	12,421	580	441	1,604	1,617	1,052	1,426	1,610	568	805	399	374	323	304	756	562
	100%	5%	4%	13%	13%	8%	11%	13%	5%	6%	3%	3%	3%	2%	6%	5%

### ADTC

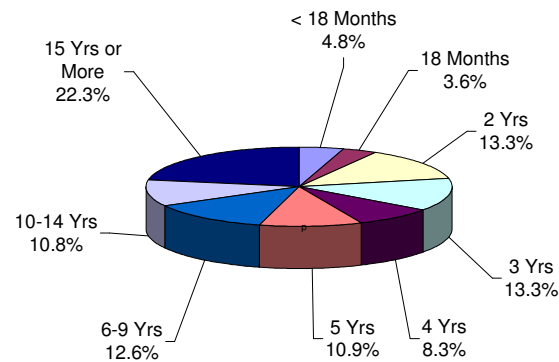


The median mandatory minimum term at ADTC is 8 years 6 months.

Fifty-six percent (56%) of the ADTC population have mandatory minimum sentences (382 of 678).

Thirty-eight percent (38%) have mandatory minimum terms of 10 years or longer.

### PRISON MALES

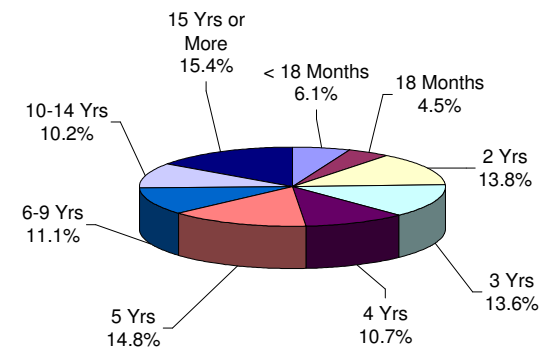


Of the 16,844 prison complex males, 68% (11,479) have mandatory minimum terms.

The median mandatory minimum term for prison complex males is 5 years (ADTC excluded).

Eighty-five percent (85%) of New Jersey State Prison inmates have mandatory minimum terms and 80% percent of those have minimum terms of 15 years or more.

### FEMALE FACILITIES



The median mandatory minimum term at Edna Mahan is 5 years.

At Edna Mahan, 51% of the females housed have minimum terms (560 of 1,102).

Sixty-three percent (63%) of the females with mandatory minimum terms have terms of 5 years or less.

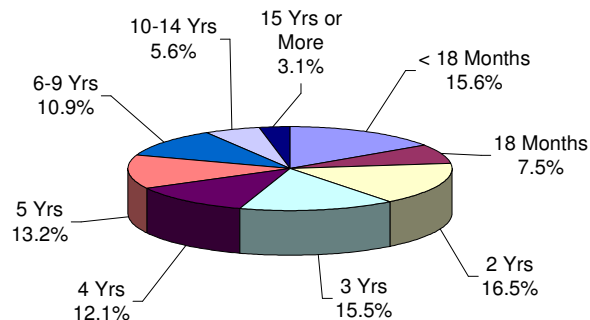
### Youth Complex Offenders By Mandatory Minimum Term

Institution	Total	< 18 Months	18 Months	2 Years	3 Years	4 Years	5 Years	6-9 Years	10 Years	11-14 Years	15 Years	16-19 Years	20-24 Years	25-29 Years	30 Years	30+ Years
Garden State	1,176 100%	120 10%	76 6%	178 15%	163 14%	144 12%	174 15%	155 13%	31 3%	62 5%	17 1%	22 2%	17 1%	4 0%	9 1%	4 0%
Mountainview Main	657 100%	150 23%	61 9%	144 22%	139 21%	91 14%	44 7%	24 4%	1 0%	1 0%	2 0%	0 0%	0 0%	0 0%	0 0%	0 0%
Mountainview Stokes	48 100%	17 35%	7 15%	10 21%	7 15%	4 8%	2 4%	1 2%	0 0%	0 0%	0 0%	0 0%	0 0%	0 0%	0 0%	0 0%
Mountainview Total	705 100%	167 24%	68 10%	154 22%	146 21%	95 13%	46 7%	25 4%	1 0%	1 0%	2 0%	0 0%	0 0%	0 0%	0 0%	0 0%
Wagner Main	699 100%	99 14%	52 7%	93 13%	103 15%	79 11%	121 17%	102 15%	18 3%	25 4%	2 0%	5 1%	0 0%	0 0%	0 0%	0 0%
Wagner Ad Seg	170 100%	28 16%	6 4%	17 10%	21 12%	20 12%	30 18%	24 14%	11 6%	7 4%	0 0%	2 1%	1 1%	0 0%	3 2%	0 0%
Wagner Adult Boot Camp	54 100%	24 44%	7 13%	20 37%	2 4%	0 0%	0 0%	1 2%	0 0%	0 0%	0 0%	0 0%	0 0%	0 0%	0 0%	0 0%
Wagner Total	923 100%	151 16%	65 7%	130 14%	126 14%	99 11%	151 16%	127 14%	29 3%	32 3%	2 0%	7 1%	1 0%	0 0%	3 0%	0 0%
Total Youth	2,804 100%	438 16%	209 7%	462 16%	435 16%	338 12%	371 13%	307 11%	61 2%	95 3%	21 1%	29 1%	18 1%	4 0%	12 0%	4 0%

## Offenders In Other Facilities By Mandatory Minimum Term

Institution	Total	< 18 Months	18 Months	2 Years	3 Years	4 Years	5 Years	6-9 Years	10 Years	11-14 Years	15 Years	16-19 Years	20-24 Years	25-29 Years	30 Years	30+ Years
Central Medical	11 100%	0 0%	1 9%	3 27%	1 9%	0 0%	3 27%	2 18%	0 0%	0 0%	0 0%	0 0%	0 0%	0 0%	0 0%	1 9%
County Jail	327 100%	57 17%	33 10%	81 25%	64 20%	27 8%	24 7%	26 8%	4 1%	7 2%	2 1%	1 0%	0 0%	1 0%	0 0%	0 0%
EM/HC	18 100%	5 28%	2 11%	3 17%	5 28%	0 0%	1 6%	2 11%	0 0%	0 0%	0 0%	0 0%	0 0%	0 0%	0 0%	0 0%
Halfway House	1,705 100%	213 12%	189 11%	504 30%	417 24%	131 8%	93 5%	102 6%	21 1%	16 1%	12 1%	4 0%	2 0%	0 0%	1 0%	0 0%
<b>Total Other Facilities</b>	<b>2,061 100%</b>	<b>275 13%</b>	<b>225 11%</b>	<b>591 29%</b>	<b>487 24%</b>	<b>158 8%</b>	<b>121 6%</b>	<b>132 6%</b>	<b>25 1%</b>	<b>23 1%</b>	<b>14 1%</b>	<b>5 0%</b>	<b>2 0%</b>	<b>1 0%</b>	<b>1 0%</b>	<b>1 0%</b>

### YOUTH COMPLEX

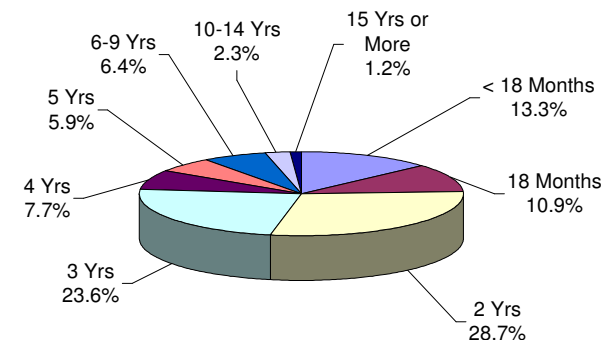


The median mandatory minimum term for youth complex offenders is 3 years.

Among youth complex offenders, 64% have mandatory minimum terms (2,804 of 4,358).

Of these, 80% have mandatory minimum terms of 5 years or less.

### OFFENDERS IN OTHER FACILITIES



The median mandatory minimum term for inmates in ' other facilities' is 2.5 years.

Fifty-five percent (55%) of the offenders in ' other facilities' have mandatory minimum terms (2,061 of 3,764).

Of these, 90% have mandatory minimum terms of 5 years or less.

***AGE GROUP***

**OFFENDERS IN NEW JERSEY CORRECTIONAL INSTITUTIONS  
ON JANUARY 9, 2006, BY AGE**

The age of the offender is the chronological age as of January 9, 2006.

**OFFENDERS IN CORRECTIONAL INSTITUTIONS BY AGE**

Age	Total		Prison Males		Youth Complex		ADTC		Edna Mahan		Other Facilities	
	#	%	#	%	#	%	#	%	#	%	#	%
TOTAL OFFENDERS	26,746	100%	16,844	100%	4,358	100%	678	100%	1,102	100%	3,764	100%
< 17 Years	2	0%	0	0%	1	0%	0	0%	0	0%	1	0%
17 Years	17	0%	0	0%	15	0%	0	0%	1	0%	1	0%
18-20 Years	884	3%	130	1%	626	14%	17	3%	24	2%	87	2%
21-22 Years	1,933	7%	489	3%	1,174	27%	15	2%	46	4%	209	6%
23-24 Years	2,196	8%	762	5%	1,059	24%	11	2%	83	8%	281	7%
25-27 Years	3,544	13%	1,679	10%	1,179	27%	27	4%	122	11%	537	14%
28-30 Years	2,936	11%	2,083	12%	269	6%	33	5%	94	9%	457	12%
31-33 Years	2,596	10%	2,035	12%	10	0%	42	6%	99	9%	410	11%
34-36 Years	2,735	10%	2,101	12%	10	0%	62	9%	116	11%	446	12%
37-39 Years	2,338	9%	1,781	11%	3	0%	58	9%	140	13%	356	9%
40-44 Years	3,348	13%	2,551	15%	8	0%	105	15%	176	16%	508	13%
45-49 Years	2,108	8%	1,603	10%	3	0%	88	13%	119	11%	295	8%
50-54 Years	1,051	4%	828	5%	1	0%	74	11%	42	4%	106	3%
55-59 Years	608	2%	469	3%	0	0%	74	11%	25	2%	40	1%
60-64 Years	251	1%	192	1%	0	0%	34	5%	9	1%	16	0%
65+ Years	198	1%	140	1%	0	0%	38	6%	6	1%	14	0%
Unspecified	1	0%	1	0%	0	0%	0	0%	0	0%	0	0%

- The median age for adult residents is 33 years.
- Three percent (3%) of all adult offenders are 20 years of age or younger.
- Thirty-nine percent (39%) of all adult offenders are between the ages of 21-30.
- Twenty-nine percent (29%) of all adult offenders are 31 to 39 years of age.
- Twenty-nine percent (29%) of all adult offenders are 40 years of age and older.

### Prison Complex Offenders By Age

Institution	Total	< 17 Years	17 Years	18-20 Years	21-22 Years	23-24 Years	25-27 Years	28-30 Years	31-33 Years	34-36 Years	37-39 Years	40-44 Years	45-49 Years	50-54 Years	55-59 Years	60-64 Years	65+ Years	Unspec
Bayside Main	1,291 100%	0 0%	0 0%	1 0%	23 2%	60 5%	149 12%	179 14%	173 13%	213 16%	123 10%	186 14%	107 8%	43 3%	24 2%	6 0%	4 0%	0 0%
Bayside Farm	610 100%	0 0%	0 0%	0 0%	1 0%	10 2%	33 5%	66 11%	100 16%	77 13%	69 11%	136 22%	64 10%	35 6%	12 2%	6 1%	1 0%	0 0%
Bayside Ancora	341 100%	0 0%	0 0%	0 0%	2 1%	6 2%	20 6%	44 13%	57 17%	52 15%	44 13%	63 18%	40 12%	8 2%	3 1%	2 1%	0 0%	0 0%
Bayside Total	2,242 100%	0 0%	0 0%	1 0%	26 1%	76 3%	202 9%	289 13%	330 15%	342 15%	236 11%	385 17%	211 9%	86 4%	39 2%	14 1%	5 0%	0 0%
CRAF Jones Farm	227 100%	0 0%	0 0%	0 0%	0 0%	0 0%	10 4%	34 15%	29 13%	37 16%	27 12%	49 22%	29 13%	7 3%	3 1%	2 1%	0 0%	0 0%
CRAF Reception	885 100%	0 0%	0 0%	28 3%	45 5%	48 5%	98 11%	106 12%	102 12%	114 13%	102 12%	128 14%	68 8%	31 4%	12 1%	3 0%	0 0%	0 0%
CRAF Total	1,112 100%	0 0%	0 0%	28 3%	45 4%	48 4%	108 10%	140 13%	131 12%	151 14%	129 12%	177 16%	97 9%	38 3%	15 1%	5 0%	0 0%	0 0%
East Jersey Main	1,418 100%	0 0%	0 0%	2 0%	17 1%	35 2%	111 8%	150 11%	171 12%	166 12%	169 12%	238 17%	164 12%	91 6%	51 4%	35 2%	18 1%	0 0%
East Jersey Camp	129 100%	0 0%	0 0%	0 0%	0 0%	1 1%	5 4%	20 16%	15 12%	25 19%	15 12%	26 20%	13 10%	8 6%	0 0%	1 1%	0 0%	0 0%
East Jersey Ad Seg	385 100%	0 0%	0 0%	13 3%	37 10%	50 13%	68 18%	46 12%	50 13%	42 11%	17 4%	30 8%	16 4%	6 2%	7 2%	2 1%	1 0%	0 0%
East Jersey Total	1,932 100%	0 0%	0 0%	15 1%	54 3%	86 4%	184 10%	216 11%	236 12%	233 12%	201 10%	294 15%	193 10%	105 5%	58 3%	38 2%	19 1%	0 0%

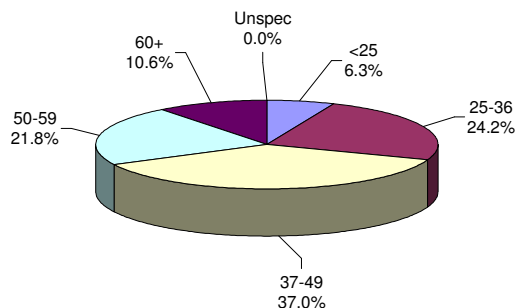
### Prison Complex Offenders By Age

Institution	Total	< 17 Years	17 Years	18-20 Years	21-22 Years	23-24 Years	25-27 Years	28-30 Years	31-33 Years	34-36 Years	37-39 Years	40-44 Years	45-49 Years	50-54 Years	55-59 Years	60-64 Years	65+ Years	Unspec
Midstate	649 100%	0 0%	0 0%	2 0%	12 2%	32 5%	39 6%	74 11%	67 10%	77 12%	78 12%	120 18%	65 10%	36 6%	31 5%	9 1%	7 1%	0 0%
NJ State Prison Ad Seg Female	10 100%	0 0%	0 0%	1 10%	0 0%	0 0%	4 40%	2 20%	2 20%	0 0%	0 0%	1 10%	0 0%	0 0%	0 0%	0 0%	0 0%	0 0%
NJ State Prison Main	1,810 100%	0 0%	0 0%	6 0%	52 3%	58 3%	155 9%	183 10%	186 10%	194 11%	178 10%	295 16%	192 11%	124 7%	93 5%	51 3%	43 2%	0 0%
NJ State Prison Total	1,820 100%	0 0%	0 0%	7 0%	52 3%	58 3%	159 9%	185 10%	188 10%	194 11%	178 10%	296 16%	192 11%	124 7%	93 5%	51 3%	43 2%	0 0%
Northern Main	2,154 100%	0 0%	0 0%	35 2%	110 5%	141 7%	268 12%	277 13%	265 12%	260 12%	216 10%	259 12%	164 8%	82 4%	47 2%	18 1%	12 1%	0 0%
Northern Ad Seg Male	480 100%	0 0%	0 0%	11 2%	47 10%	51 11%	69 14%	60 13%	47 10%	41 9%	28 6%	54 11%	43 9%	13 3%	9 2%	4 1%	2 0%	1 0%
Northern Total	2,634 100%	0 0%	0 0%	46 2%	157 6%	192 7%	337 13%	337 13%	312 12%	301 11%	244 9%	313 12%	207 8%	95 4%	56 2%	22 1%	14 1%	1 0%
Riverfront	1,015 100%	0 0%	0 0%	2 0%	13 1%	54 5%	111 11%	153 15%	120 12%	124 12%	89 9%	124 12%	109 11%	58 6%	35 3%	13 1%	10 1%	0 0%
Southern	2,063 100%	0 0%	0 0%	1 0%	23 1%	56 3%	167 8%	322 16%	289 14%	300 15%	254 12%	320 16%	195 9%	89 4%	35 2%	8 0%	4 0%	0 0%
South Woods	3,377 100%	0 0%	0 0%	28 1%	107 3%	160 5%	372 11%	367 11%	362 11%	379 11%	372 11%	522 15%	334 10%	197 6%	107 3%	32 1%	38 1%	0 0%
<b>SUBTOTAL PRISON MALES</b>	<b>16,844 100%</b>	<b>0 0%</b>	<b>0 0%</b>	<b>130 1%</b>	<b>489 3%</b>	<b>762 5%</b>	<b>1,679 10%</b>	<b>2,083 12%</b>	<b>2,035 12%</b>	<b>2,101 12%</b>	<b>1,781 11%</b>	<b>2,551 15%</b>	<b>1,603 10%</b>	<b>828 5%</b>	<b>469 3%</b>	<b>192 1%</b>	<b>140 1%</b>	<b>1 0%</b>

## Prison Complex Offenders By Age

Institution	Total	< 17 Years	17 Years	18-20 Years	21-22 Years	23-24 Years	25-27 Years	28-30 Years	31-33 Years	34-36 Years	37-39 Years	40-44 Years	45-49 Years	50-54 Years	55-59 Years	60-64 Years	65+ Years	Unspec
ADTC	678 100%	0 0%	0 0%	17 3%	15 2%	11 2%	27 4%	33 5%	42 6%	62 9%	58 9%	105 15%	88 13%	74 11%	74 11%	34 5%	38 6%	0 0%
Subtotal	17,522 100%	0 0%	0 0%	147 1%	504 3%	773 4%	1,706 10%	2,116 12%	2,077 12%	2,163 12%	1,839 10%	2,656 15%	1,691 10%	902 5%	543 3%	226 1%	178 1%	1 0%
Mahan - Female Prison	1,102 100%	0 0%	1 0%	24 2%	46 4%	83 8%	122 11%	94 9%	99 9%	116 11%	140 13%	176 16%	119 11%	42 4%	25 2%	9 1%	6 1%	0 0%
Total Prison Complex	18,624 100%	0 0%	1 0%	171 1%	550 3%	856 5%	1,828 10%	2,210 12%	2,176 12%	2,279 12%	1,979 11%	2,832 15%	1,810 10%	944 5%	568 3%	235 1%	184 1%	1 0%

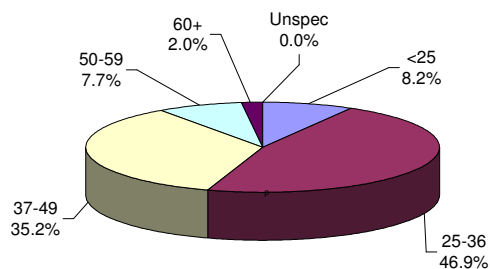
**ADTC**



The median age at ADTC is 43 years.

Thirty-two percent (32%) of the ADTC offenders are 50 years of age or older. This may be compared with 10% of male prison complex offenders and 7% of female (Edna Mahan) offenders.

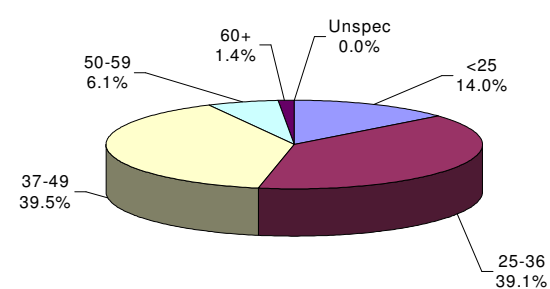
**PRISON MALES**



The median age for prison complex males (excluding ADTC) is 35 years.

Forty-seven percent (47%) of the male prison complex population are age 25 to 36.

**FEMALE FACILITIES**



The median age for female inmates (Edna Mahan) is 36 years.

Thirty-nine percent (39%) of the women at Edna Mahan are age 25 to 36.



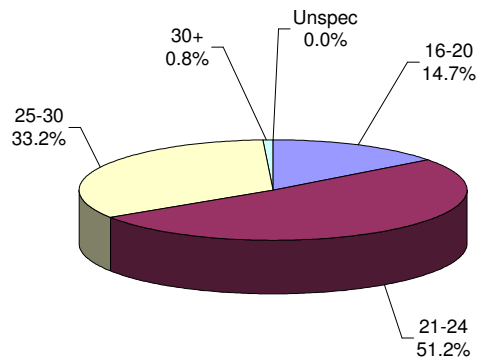
### Youth Complex Offenders By Age

Institution	Total	< 17 Years	17 Years	18-20 Years	21-22 Years	23-24 Years	25-27 Years	28-30 Years	31-33 Years	34-36 Years	37-39 Years	40-44 Years	45-49 Years	50-54 Years	55-59 Years	60-64 Years	65+ Years	Unspec
Garden State	1,788 100%	0 0%	8 0%	270 15%	480 27%	437 24%	478 27%	107 6%	2 0%	3 0%	0 0%	1 0%	2 0%	0 0%	0 0%	0 0%	0 0%	0 0%
Mountainview Main	1,140 100%	1 0%	6 1%	196 17%	347 30%	250 22%	271 24%	61 5%	1 0%	1 0%	2 0%	3 0%	1 0%	0 0%	0 0%	0 0%	0 0%	0 0%
Mountainview Stokes	104 100%	0 0%	0 0%	11 11%	22 21%	32 31%	34 33%	5 5%	0 0%	0 0%	0 0%	0 0%	0 0%	0 0%	0 0%	0 0%	0 0%	0 0%
Mountainview Total	1,244 100%	1 0%	6 0%	207 17%	369 30%	282 23%	305 25%	66 5%	1 0%	1 0%	2 0%	3 3%	1 1%	0 0%	0 0%	0 0%	0 0%	0 0%
Wagner Main	1,010 100%	0 0%	1 0%	84 8%	219 22%	262 26%	337 33%	89 9%	7 1%	6 1%	1 0%	3 0%	0 0%	1 0%	0 0%	0 0%	0 0%	0 0%
Wagner Ad Seg	233 100%	0 0%	0 0%	48 21%	79 34%	61 26%	40 17%	4 2%	0 0%	0 0%	0 0%	1 0%	0 0%	0 0%	0 0%	0 0%	0 0%	0 0%
Wagner Adult Boot Camp	83 100%	0 0%	0 0%	17 20%	27 33%	17 20%	19 23%	3 4%	0 0%	0 0%	0 0%	0 0%	0 0%	0 0%	0 0%	0 0%	0 0%	0 0%
Wagner Total	1,326 100%	0 0%	1 0%	149 11%	325 25%	340 26%	396 30%	96 7%	7 1%	6 0%	1 0%	4 0%	0 0%	1 0%	0 0%	0 0%	0 0%	0 0%
Total Youth	4,358 100%	1 0%	15 0%	626 14%	1,174 27%	1,059 24%	1,179 27%	269 6%	10 0%	10 0%	3 0%	8 0%	3 0%	1 0%	0 0%	0 0%	0 0%	0 0%

## Offenders In Other Facilities By Age

Institution	Total	< 17 Years	17 Years	18-20 Years	21-22 Years	23-24 Years	25-27 Years	28-30 Years	31-33 Years	34-36 Years	37-39 Years	40-44 Years	45-49 Years	50-54 Years	55-59 Years	60-64 Years	65+ Years	Unspec
Central Medical	16 100%	0 0%	0 0%	1 6%	1 6%	0 0%	0 0%	1 6%	0 0%	1 6%	1 6%	4 25%	4 25%	2 13%	1 6%	0 0%	0 0%	0 0%
County Jail	1,094 100%	1 0%	0 0%	33 3%	54 5%	62 6%	151 14%	120 11%	111 10%	131 12%	111 10%	165 15%	95 9%	33 3%	20 2%	3 0%	4 0%	0 0%
EM/HC	28 100%	0 0%	0 0%	1 4%	2 7%	1 4%	3 11%	3 11%	4 14%	6 21%	2 7%	3 11%	0 0%	1 4%	0 0%	1 4%	1 4%	0 0%
Halfway House	2,626 100%	0 0%	1 0%	52 2%	152 6%	218 8%	383 15%	333 13%	295 11%	308 12%	242 9%	336 13%	196 7%	70 3%	19 1%	12 0%	9 0%	0 0%
<b>Total Other Facilities</b>	<b>3,764 100%</b>	<b>1 0%</b>	<b>1 0%</b>	<b>87 2%</b>	<b>209 6%</b>	<b>281 7%</b>	<b>537 14%</b>	<b>457 12%</b>	<b>410 11%</b>	<b>446 12%</b>	<b>356 9%</b>	<b>508 13%</b>	<b>295 8%</b>	<b>106 3%</b>	<b>40 1%</b>	<b>16 0%</b>	<b>14 0%</b>	<b>0 0%</b>

### YOUTH COMPLEX

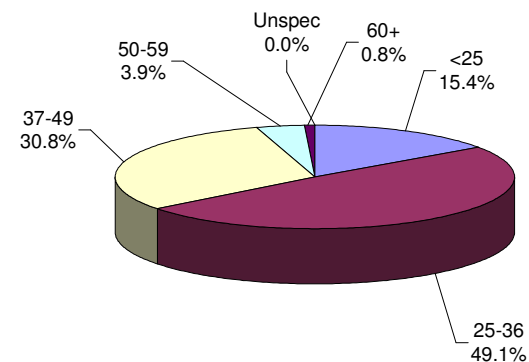


The median age for the youth complex is 23 years.

Eighty-four percent (84%) of all youth complex inmates are between the ages of 21 and 30.

Sixty-six percent (66%) are less than 25 years of age.

### OFFENDERS IN OTHER FACILITIES



The median age for offenders in ' other facilities' is 33 years.

The median age for offenders housed in county jail is 34 years, while for those offenders on electronic monitoring/ home confinement is 33 years. Offenders in halfway houses have a median age of 32 years.

***RACE/ETHNIC IDENTIFICATION***

**OFFENDERS IN NEW JERSEY CORRECTIONAL INSTITUTIONS  
ON JANUARY 9, 2006, BY RACE/ETHNIC IDENTIFICATION**

In these tabulations, a Hispanic is a person of Mexican, Puerto Rican, Cuban, South American or other Spanish culture or origin (Spain or Portugal) regardless of complexion.

**OFFENDERS IN CORRECTIONAL INSTITUTIONS BY RACE/ETHNIC IDENTIFICATION**

Ethnic Identification	Total		Prison Males		Youth Complex		ADTC		Edna Mahan		Other Facilities	
	#	%	#	%	#	%	#	%	#	%	#	%
TOTAL OFFENDERS	26,746	100%	16,844	100%	4,358	100%	678	100%	1,102	100%	3,764	100%
Black	16,638	62%	10,581	63%	2,771	64%	185	27%	610	55%	2,491	66%
White	5,291	20%	3,181	19%	739	17%	378	56%	344	31%	649	17%
Hispanic	4,684	18%	2,998	18%	825	19%	110	16%	140	13%	611	16%
Asian	106	0%	68	0%	17	0%	3	0%	7	1%	11	0%
American Indian	6	0%	3	0%	3	0%	0	0%	0	0%	0	0%
Other or Unspecified	21	0%	13	0%	3	0%	2	0%	1	0%	2	0%

- Sixty-two percent of all state correctional institution offenders were Black, 20% were White and 18% were Hispanic.

### Prison Complex Offenders By Race/Ethnic Identification

Institution	Total	Black	White	Hispanic	Asian	American Indian	Other or Unspec.
<b>Bayside</b>	1,291	830	232	223	4	0	2
<b>Main</b>	100%	64%	18%	17%	0%	0%	0%
<b>Bayside</b>	610	381	128	100	1	0	0
<b>Farm</b>	100%	62%	21%	16%	0%	0%	0%
<b>Bayside</b>	341	224	50	65	2	0	0
<b>Ancora</b>	100%	66%	15%	19%	1%	0%	0%
<b>Bayside Total</b>	2,242	1,435	410	388	7	0	2
	100%	64%	18%	17%	0%	0%	0%
<b>CRAF</b>	227	123	59	44	0	0	1
<b>Jones Farm</b>	100%	54%	26%	19%	0%	0%	0%
<b>CRAF</b>	885	527	160	193	5	0	0
<b>Reception</b>	100%	60%	18%	22%	1%	0%	0%
<b>CRAF Total</b>	1,112	650	219	237	5	0	1
	100%	58%	20%	21%	0%	0%	0%
<b>East Jersey</b>	1,418	962	190	260	6	0	0
<b>Main</b>	100%	68%	13%	18%	0%	0%	0%
<b>East Jersey</b>	129	90	19	20	0	0	0
<b>Camp</b>	100%	70%	15%	16%	0%	0%	0%
<b>East Jersey</b>	385	283	46	54	1	0	1
<b>Ad Seg</b>	100%	74%	12%	14%	0%	0%	0%
<b>East Jersey Total</b>	1,932	1,335	255	334	7	0	1
	100%	69%	13%	17%	0%	0%	0%

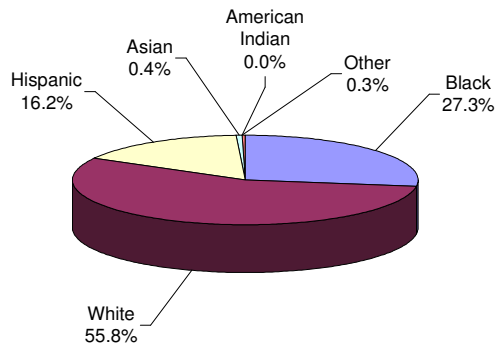
### Prison Complex Offenders By Race/Ethnic Identification

Institution	Total	Black	White	Hispanic	Asian	American Indian	Other
Midstate	649 100%	318 49%	190 29%	136 21%	3 0%	1 0%	1 0%
NJ State Prison Ad Seg Female	10 100%	8 0%	1 0%	1 0%	0 0%	0 0%	0 0%
NJ State Prison Main	1,810 100%	1,176 65%	360 20%	257 14%	15 1%	0 0%	2 0%
NJ State Prison Total	1,820 100%	1,184 65%	361 20%	258 14%	15 1%	0 0%	2 0%
Northern Main	2,154 100%	1,446 67%	268 12%	429 20%	9 0%	0 0%	2 0%
Northern Ad Seg Male	480 100%	340 71%	56 12%	83 17%	0 0%	0 0%	1 0%
Northern Total	2,634 100%	1,786 68%	324 12%	512 19%	9 0%	0 0%	3 0%
Riverfront	1,015 100%	637 63%	167 16%	204 20%	6 1%	1 0%	0 0%
Southern	2,063 100%	1,301 63%	411 20%	344 17%	6 0%	0 0%	1 0%
South Woods	3,377 100%	1,935 57%	844 25%	585 17%	10 0%	1 0%	2 0%
<b>SUBTOTAL PRISON MALES</b>	<b>16,844 100%</b>	<b>10,581 63%</b>	<b>3,181 19%</b>	<b>2,998 18%</b>	<b>68 0%</b>	<b>3 0%</b>	<b>13 0%</b>

## Prison Complex Offenders By Race/Ethnic Identification

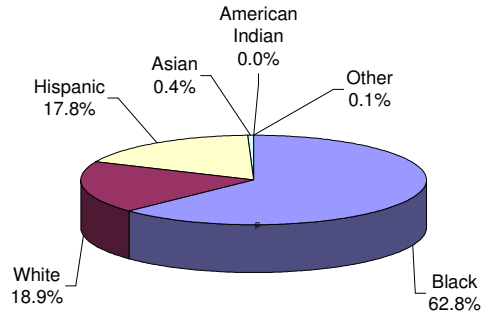
Institution	Total	Black	White	Hispanic	Asian	American Indian	Other
ADTC	678	185	378	110	3	0	2
	100%	27%	56%	16%	0%	0%	0%
Subtotal	17,522	10,766	3,559	3,108	71	3	15
	100%	61%	20%	18%	0%	0%	0%
Mahan - Female Prison	1,102	610	344	140	7	0	1
	100%	55%	31%	13%	1%	0%	0%
Total Prison Complex	18,624	11,376	3,903	3,248	78	3	16
	100%	61%	21%	17%	0%	0%	0%

### ADTC



White offenders comprised 56% of the offenders at ADTC.

### PRISON MALES

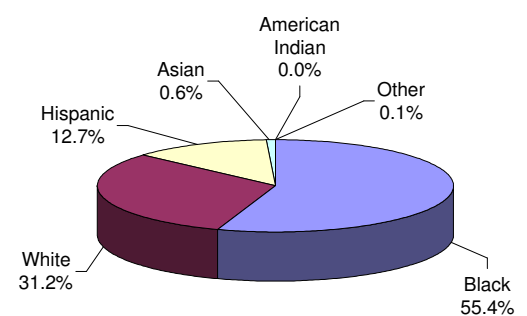


The largest proportion of Black male offenders in a major facility was at East Jersey State Prison (69%).

The largest proportion of White male offenders at a major facility was at Mid-State Correctional Facility (29%).

The largest proportion of Hispanic male offenders at a major facility was at CRAF and Mid-State (21%).

### FEMALE FACILITIES



Black offenders comprised 55% of the population at Edna Mahan. This may be compared with Black offenders comprising 63% of prison complex males.

### Youth Complex Offenders By Race/Ethnic Identification

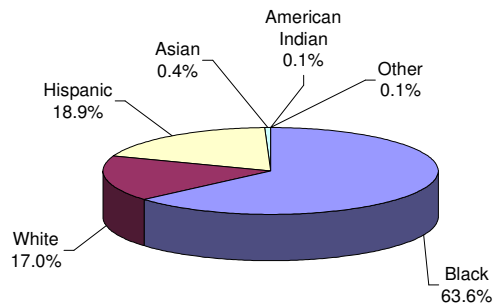
Institution	Total	Black	White	Hispanic	Asian	American Indian	Other
Garden State	1,788	1,085	329	366	5	3	0
	100%	61%	18%	20%	0%	0%	0%
Mountainview Main	1,140	672	260	203	5	0	0
	100%	59%	23%	18%	0%	0%	0%
Mountainview Stokes	104	65	26	13	0	0	0
	100%	63%	25%	13%	0%	0%	0%
Mountainview Total	1,244	737	286	216	5	0	0
	100%	59%	23%	17%	0%	0%	0%
Wagner Main	1,010	721	95	188	5	0	1
	100%	71%	9%	19%	0%	0%	0%
Wagner Ad Seg	233	179	12	39	1	0	2
	100%	77%	5%	17%	0%	0%	1%
Wagner Adult Boot Camp	83	49	17	16	1	0	0
	100%	59%	20%	19%	1%	0%	0%
Wagner Total	1,326	949	124	243	7	0	3
	100%	72%	9%	18%	1%	0%	0%
Total Youth	4,358	2,771	739	825	17	3	3
	100%	64%	17%	19%	0%	0%	0%



## Offenders In Other Facilities By Race/Ethnic Identification

Institution	Total	Black	White	Hispanic	Asian	American Indian	Other
Central Medical	16	10	3	2	1	0	0
	100%	63%	19%	13%	6%	0%	0%
County Jail	1,094	641	246	200	5	0	2
	100%	59%	22%	18%	0%	0%	0%
EM/HC	28	18	3	7	0	0	0
	100%	64%	11%	25%	0%	0%	0%
Halfway House	2,626	1,822	397	402	5	0	0
	100%	69%	15%	15%	0%	0%	0%
<b>Total Other Facilities</b>	<b>3,764</b>	<b>2,491</b>	<b>649</b>	<b>611</b>	<b>11</b>	<b>0</b>	<b>2</b>
	100%	66%	17%	16%	0%	0%	0%

### YOUTH COMPLEX

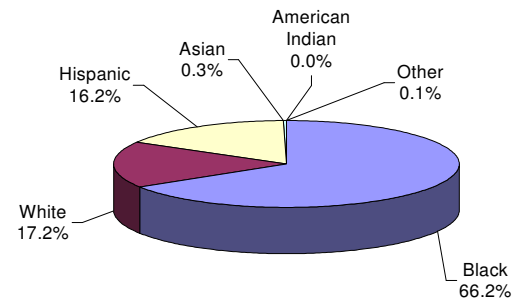


The largest proportion of Black offenders in the youth complex facilities was housed at Wagner (72%).

The largest proportion of White offenders in the youth complex facilities was housed at Mountainview (23%).

The largest proportion of Hispanic offenders in the youth complex facilities was housed at Garden State (20%).

### OFFENDERS IN OTHER FACILITIES



Race and ethnicity for inmates assigned to 'other facilities' was roughly equivalent to that for the total adult inmate population.

***COUNTY OF COMMITMENT***

**OFFENDERS IN NEW JERSEY CORRECTIONAL INSTITUTIONS  
ON JANUARY 9, 2006, BY COUNTY OF COMMITMENT**

**OFFENDERS IN NEW JERSEY CORRECTIONAL INSTITUTIONS BY COUNTY OF COMMITMENT**

County of Commitment	Total		Prison Males		Youth Complex		ADTC		Edna Mahan		Other Facilities	
	#	%	#	%	#	%	#	%	#	%	#	%
TOTAL OFFENDERS	26,746	100%	16,844	100%	4,358	100%	678	100%	1,102	100%	3,764	100%
Atlantic	1,795	7%	1,126	7%	254	6%	34	5%	81	7%	300	8%
Bergen	1,024	4%	616	4%	149	3%	40	6%	35	3%	184	5%
Burlington	676	3%	384	2%	148	3%	47	7%	24	2%	73	2%
Camden	3,580	13%	2,216	13%	621	14%	71	10%	106	10%	566	15%
Cape May	435	2%	280	2%	73	2%	17	3%	8	1%	57	2%
Cumberland	721	3%	438	3%	107	2%	20	3%	15	1%	141	4%
Essex	4,408	16%	3,127	19%	630	14%	50	7%	105	10%	496	13%
Gloucester	348	1%	221	1%	62	1%	16	2%	8	1%	41	1%
Hudson	2,269	8%	1,491	9%	369	8%	23	3%	56	5%	330	9%
Hunterdon	81	0%	47	0%	11	0%	9	1%	7	1%	7	0%
Mercer	1,345	5%	874	5%	263	6%	36	5%	38	3%	134	4%
Middlesex	1,408	5%	895	5%	264	6%	38	6%	34	3%	177	5%
Monmouth	1,414	5%	852	5%	223	5%	41	6%	59	5%	239	6%
Morris	376	1%	252	1%	52	1%	30	4%	12	1%	30	1%
Ocean	908	3%	564	3%	148	3%	45	7%	52	5%	99	3%
Passaic	2,294	9%	1,353	8%	427	10%	66	10%	57	5%	391	10%
Salem	195	1%	117	1%	33	1%	8	1%	1	0%	36	1%
Somerset	368	1%	238	1%	53	1%	15	2%	13	1%	49	1%
Sussex	189	1%	109	1%	36	1%	12	2%	5	0%	27	1%
Union	2,238	8%	1,426	8%	381	9%	40	6%	64	6%	327	9%
Warren	199	1%	112	1%	50	1%	16	2%	6	1%	15	0%
Not Coded	475	2%	106	1%	4	0%	4	1%	316	29%	45	1%

- Essex County has the highest percentage of commitments at the prison complex (19%) and the youth complex (14%).
- Two counties, Essex and Camden, have the highest percentage of commitments at Edna Mahan (10%).
- Two counties, Camden and Passaic, have the highest percentage of commitments at ADTC (10%).
- Camden County has the highest percentage of commitments (15%) at other adult facilities.
- Two counties, Essex and Camden, combine to comprise roughly a third of total DOC commitments.

### Prison Complex Offenders By County Of Commitment

Institution	Total	Atl	Ber	Burl	Cam	Cape May	Cum	Ess	Glou	Hud	Hunt	Mer	Mid	Mon	Mor	Oc	Pas	Sal	Som	Sus	Un	War	Not Coded
Bayside Main	1,291 100%	109 8%	35 3%	30 2%	168 13%	28 2%	33 3%	196 15%	20 2%	132 10%	2 0%	70 5%	70 5%	70 5%	28 2%	42 3%	101 8%	16 1%	13 1%	7 1%	112 9%	9 1%	0 0%
Bayside Farm	610 100%	55 9%	19 3%	13 2%	105 17%	15 2%	21 3%	86 14%	9 1%	56 9%	1 0%	28 5%	26 4%	24 4%	9 1%	21 3%	41 7%	3 0%	11 2%	4 1%	61 10%	2 0%	0 0%
Bayside Ancora	341 100%	28 8%	8 2%	9 3%	62 18%	10 3%	11 3%	45 13%	3 1%	45 13%	1 0%	15 4%	19 6%	16 5%	6 2%	8 2%	20 6%	2 1%	2 1%	2 1%	27 8%	1 0%	1 0%
Bayside Total	2,242 100%	192 9%	62 3%	52 2%	335 15%	53 2%	65 3%	327 15%	32 1%	233 10%	4 0%	113 5%	115 5%	110 5%	43 2%	71 3%	162 7%	21 1%	26 1%	13 1%	200 9%	12 1%	1 0%
CRAF Jones Farm	227 100%	14 6%	7 3%	7 3%	40 18%	4 2%	3 1%	20 9%	6 3%	22 10%	2 1%	7 3%	12 5%	12 5%	7 3%	10 4%	23 10%	2 1%	3 1%	2 1%	22 10%	2 1%	0 0%
CRAF Reception	885 100%	63 7%	34 4%	18 2%	146 16%	12 1%	22 2%	104 12%	7 1%	74 8%	3 0%	44 5%	71 8%	49 6%	14 2%	41 5%	78 9%	7 1%	14 2%	5 1%	66 7%	8 1%	5 1%
CRAF Total	1,112 100%	77 7%	41 4%	25 2%	186 17%	16 1%	25 2%	124 11%	13 1%	96 9%	5 0%	51 5%	83 7%	61 5%	21 2%	51 5%	101 9%	9 1%	17 2%	7 1%	88 8%	10 1%	5 0%
East Jersey Main	1,418 100%	47 3%	63 4%	22 2%	102 7%	6 0%	25 2%	403 28%	14 1%	140 10%	1 0%	67 5%	64 5%	76 5%	23 2%	33 2%	151 11%	4 0%	21 1%	9 1%	137 10%	1 0%	9 1%
East Jersey Camp	129 100%	5 4%	7 5%	3 2%	9 7%	0 0%	2 2%	28 22%	1 1%	21 16%	0 0%	3 2%	11 9%	3 2%	2 2%	7 5%	15 12%	0 0%	1 1%	0 0%	10 8%	1 1%	0 0%
East Jersey Ad Seg	385 100%	22 6%	12 3%	10 3%	50 13%	7 2%	13 3%	103 27%	3 1%	33 9%	1 0%	29 8%	19 5%	14 4%	4 1%	8 2%	27 7%	3 1%	2 1%	0 0%	23 6%	2 1%	0 0%
East Jersey Total	1,932 100%	74 4%	82 4%	35 2%	161 8%	13 1%	40 2%	534 28%	18 1%	194 10%	2 0%	99 5%	94 5%	93 5%	29 2%	48 2%	193 10%	7 0%	24 1%	9 0%	170 9%	4 0%	9 0%

### Prison Complex Offenders By County Of Commitment

Institution	Total	Atl	Ber	Burl	Cam	Cape May	Cum	Ess	Glou	Hud	Hunt	Mer	Mid	Mon	Mor	Oc	Pas	Sal	Som	Sus	Un	War	Not Code d
Midstate	649 100%	32 5%	27 4%	16 2%	66 10%	13 2%	23 4%	78 12%	10 2%	50 8%	2 0%	42 6%	51 8%	33 5%	17 3%	48 7%	64 10%	4 1%	13 2%	6 1%	48 7%	6 1%	0 0%
NJ State Prison Ad Seg Female	10 100%	0 0%	0 0%	0 0%	1 0%	0 0%	2 0%	4 0%	0 0%	1 0%	0 0%	0 0%	1 0%	0 0%	0 0%	0 0%	0 0%	0 0%	0 0%	0 0%	1 0%	0 0%	0 0%
NJ State Prison Main	1,810 100%	115 6%	84 5%	44 2%	164 9%	23 1%	40 2%	404 22%	13 1%	116 6%	4 0%	123 7%	104 6%	106 6%	23 1%	61 3%	111 6%	6 0%	28 2%	16 1%	150 8%	10 1%	65 4%
NJ State Prison Total	1,820 100%	115 6%	84 5%	44 2%	165 9%	23 1%	42 2%	408 22%	13 1%	117 6%	4 0%	123 7%	105 6%	106 6%	23 1%	61 3%	111 6%	6 0%	28 2%	16 1%	151 8%	10 1%	65 4%
Northern Main	2,154 100%	89 4%	103 5%	34 2%	154 7%	17 1%	32 1%	546 25%	9 0%	252 12%	5 0%	96 4%	136 6%	92 4%	24 1%	52 2%	218 10%	10 0%	27 1%	9 0%	235 11%	9 0%	5 0%
Northern Ad Seg Male	480 100%	29 6%	18 4%	7 1%	40 8%	6 1%	4 1%	152 32%	3 1%	52 11%	0 0%	18 4%	25 5%	11 2%	5 1%	10 2%	43 9%	2 0%	7 1%	2 0%	42 9%	1 0%	3 1%
Northern Total	2,634 100%	118 4%	121 5%	41 2%	194 7%	23 1%	36 1%	698 26%	12 0%	304 12%	5 0%	114 4%	161 6%	103 4%	29 1%	62 2%	261 10%	12 0%	34 1%	11 0%	277 11%	10 0%	8 0%
Riverfront	1,015 100%	63 6%	28 3%	31 3%	278 27%	12 1%	36 4%	127 13%	15 1%	63 6%	7 1%	72 7%	39 4%	49 5%	9 1%	28 3%	52 5%	6 1%	16 2%	6 1%	67 7%	7 1%	4 0%
Southern	2,063 100%	168 8%	59 3%	49 2%	314 15%	49 2%	51 2%	314 15%	32 2%	197 10%	5 0%	89 4%	88 4%	118 6%	22 1%	75 4%	185 9%	14 1%	25 1%	13 1%	179 9%	15 1%	2 0%
South Woods	3,377 100%	287 8%	112 3%	91 3%	517 15%	78 2%	120 4%	517 15%	76 2%	237 7%	13 0%	171 5%	159 5%	179 5%	59 2%	120 4%	224 7%	38 1%	55 2%	28 1%	246 7%	38 1%	12 0%
<b>SUBTOTAL PRISON MALES</b>	<b>16,844 100%</b>	<b>1,126 7%</b>	<b>616 4%</b>	<b>384 2%</b>	<b>2,216 13%</b>	<b>280 2%</b>	<b>438 3%</b>	<b>3,127 19%</b>	<b>221 1%</b>	<b>1,491 9%</b>	<b>47 0%</b>	<b>874 5%</b>	<b>895 5%</b>	<b>852 5%</b>	<b>252 1%</b>	<b>564 3%</b>	<b>1,353 8%</b>	<b>117 1%</b>	<b>238 1%</b>	<b>109 1%</b>	<b>1,426 8%</b>	<b>112 1%</b>	<b>106 1%</b>

### Prison Complex Offenders By County Of Commitment

Institution	Total	Atl	Ber	Burl	Cam	Cape May	Cum	Ess	Glou	Hud	Hunt	Mer	Mid	Mon	Mor	Oc	Pas	Sal	Som	Sus	Un	War	Not Coded
ADTC	678 100%	34 5%	40 6%	47 7%	71 10%	17 3%	20 3%	50 7%	16 2%	23 3%	9 1%	36 5%	38 6%	41 6%	30 4%	45 7%	66 10%	8 1%	15 2%	12 2%	40 6%	16 2%	4 1%
Subtotal	17,522 100%	1,160 7%	656 4%	431 2%	2,287 13%	297 2%	458 3%	3,177 18%	237 1%	1,514 9%	56 0%	910 5%	933 5%	893 5%	282 2%	609 3%	1,419 8%	125 1%	253 1%	121 1%	1,466 8%	128 1%	110 1%
Mahan - Female Prison	1,102 100%	81 7%	35 3%	24 2%	106 10%	8 1%	15 1%	105 10%	8 1%	56 5%	7 1%	38 3%	34 3%	59 5%	12 1%	52 5%	57 5%	1 0%	13 1%	5 0%	64 6%	6 1%	316 29%
Total Prison Complex	18,624 100%	1,241 7%	691 4%	455 2%	2,393 13%	305 2%	473 3%	3,282 18%	245 1%	1,570 8%	63 0%	948 5%	967 5%	952 5%	294 2%	661 4%	1,476 8%	126 1%	266 1%	126 1%	1,530 8%	134 1%	426 2%

### Youth Complex Offenders By County Of Commitment

Institution	Total	Atl	Ber	Burl	Cam	Cape May	Cum	Ess	Glou	Hud	Hunt	Mer	Mid	Mon	Mor	Oc	Pas	Sal	Som	Sus	Un	War	Not Coded
Garden State	1,788 100%	119 7%	70 4%	81 5%	279 16%	33 2%	59 3%	225 13%	29 2%	125 7%	3 0%	119 7%	102 6%	107 6%	23 1%	62 3%	128 7%	17 1%	22 1%	15 1%	155 9%	14 1%	1 0%
Mountainview Main	1,140 100%	57 5%	33 3%	29 3%	144 13%	17 1%	16 1%	165 14%	20 2%	100 9%	6 1%	47 4%	71 6%	54 5%	20 2%	44 4%	157 14%	2 0%	13 1%	14 1%	105 9%	24 2%	2 0%
Mountainview Stokes	104 100%	3 3%	5 5%	3 3%	10 10%	3 3%	3 3%	16 15%	0 0%	10 10%	0 0%	1 1%	8 8%	4 4%	2 2%	3 3%	13 13%	0 0%	2 2%	0 0%	14 13%	4 4%	0 0%
Mountainview Total	1,244 100%	60 5%	38 3%	32 3%	154 12%	20 2%	19 2%	181 15%	20 2%	110 9%	6 0%	48 4%	79 6%	58 5%	22 2%	47 4%	170 14%	2 0%	15 1%	14 1%	119 10%	28 2%	2 0%
Wagner Main	1,010 100%	58 6%	32 3%	27 3%	135 13%	12 1%	22 2%	161 16%	11 1%	106 10%	2 0%	73 7%	61 6%	44 4%	5 0%	31 3%	99 10%	14 1%	14 1%	6 1%	90 9%	6 1%	1 0%
Wagner Ad Seg	233 100%	11 5%	6 3%	7 3%	39 17%	3 1%	5 2%	54 23%	2 1%	17 7%	0 0%	22 9%	16 7%	9 4%	2 1%	6 3%	18 8%	0 0%	1 0%	1 0%	14 6%	0 0%	0 0%
Wagner Adult Boot Camp	83 100%	6 7%	3 4%	1 1%	14 17%	5 6%	2 2%	9 11%	0 0%	11 13%	0 0%	1 1%	6 7%	5 6%	0 0%	2 2%	12 14%	0 0%	1 1%	0 0%	3 4%	2 2%	0 0%
Wagner Total	1,326 100%	75 6%	41 3%	35 3%	188 14%	20 2%	29 2%	224 17%	13 1%	134 10%	2 0%	96 7%	83 6%	58 4%	7 1%	39 3%	129 10%	14 1%	16 1%	7 1%	107 8%	8 1%	1 0%
Total Youth	4,358 100%	254 6%	63 1%	22 1%	102 2%	6 0%	25 1%	403 9%	14 0%	140 3%	1 0%	67 2%	64 1%	76 2%	23 1%	33 1%	151 3%	4 0%	21 0%	9 0%	137 3%	1 0%	9 0%

### Offenders In Other Facilities By County Of Commitment

Institution	Total	Atl	Ber	Burl	Cam	Cape May	Cum	Ess	Glou	Hud	Hunt	Mer	Mid	Mon	Mor	Oc	Pas	Sal	Som	Sus	Un	War	Not Coded
Central Medical	16 100%	5 31%	0 0%	1 6%	2 13%	0 0%	0 0%	0 0%	0 0%	0 0%	0 0%	3 19%	1 6%	0 0%	1 6%	1 6%	0 0%	0 0%	0 0%	0 0%	1 6%	0 0%	1 6%
County Jail	1,094 100%	122 11%	77 7%	5 0%	131 12%	9 1%	86 8%	100 9%	6 1%	76 7%	0 0%	18 2%	39 4%	106 10%	6 1%	26 2%	131 12%	18 2%	22 2%	15 1%	94 9%	6 1%	1 0%
EM/HC	28 100%	2 7%	1 4%	0 0%	8 29%	1 4%	1 4%	5 18%	1 4%	1 4%	0 0%	1 4%	0 0%	1 4%	0 0%	0 0%	3 11%	0 0%	0 0%	0 0%	3 11%	0 0%	0 0%
Halfway House	2,626 100%	171 7%	106 4%	67 3%	425 16%	47 2%	54 2%	391 15%	34 1%	253 10%	7 0%	112 4%	137 5%	132 5%	23 1%	72 3%	257 10%	18 1%	27 1%	12 0%	229 9%	9 0%	43 2%
Total Other Facilities	3,764 100%	300 8%	184 5%	73 2%	566 15%	57 2%	141 4%	496 13%	41 1%	330 9%	7 0%	134 4%	177 5%	239 6%	30 1%	99 3%	391 10%	36 1%	49 1%	27 1%	327 9%	15 0%	45 1%