



# Black Bear Harvest Data

## 2022 HARVEST INFORMATION

Harvest data is posted each morning with the prior day's harvest. All data is preliminary and subject to revision.

Last updated December 18, 2022

[Links to previous years' harvest information >](#)



Total Harvest by Zone											
Bear Hunting Zone	12/5**	12/6++	12/7	12/8	12/9	12/10	12/14	12/15	12/16	12/17	Segment B Total
Zone 1	-	1	10	8	10	13	1	3	0	2	48
Zone 2	-	0	2	5	4	7	4	0	1	2	25
Zone 3	-	0	4	7	3	3	1	0	0	2	20
Zone 4	-	0	4	7	3	2	3	1	0	0	20
Zone 5	-	0	0	0	0	0	1	0	0	0	1
Total	-	1	20	27	20	25	10	4	1	6	114
Harvested Bears Tagged This Year	-	0	2	7	1	1	0	2	0	0	13
Cumulative Harvest Rate*	-	0.0%	1.1%	4.9%	5.4%	6.0%	6.0%	7.1%	7.1%	7.1%	7.1%

\* Based on 184 tagged bears available for harvest.

\*\* Hunt closed due to stay issued by the Superior Court of New Jersey Appellate Division.

++ Court lifts the stay on the bear hunt. Hunt opened at 2pm.

Bear Hunting Zone information is available on the Hunting Explorer app at <https://dep.nj.gov/njfw/bearzones/>.

Total Harvest by County											
County	12/5**	12/6++	12/7	12/8	12/9	12/10	12/14	12/15	12/16	12/17	Segment B Total
Sussex	-	1	9	11	10	18	5	2	1	2	59
Warren	-	0	5	8	7	4	1	2	0	3	30
Passaic	-	0	3	2	0	1	1	0	0	0	7
Morris	-	0	3	6	3	2	1	0	0	0	15
Bergen	-	0	0	0	0	0	0	0	0	0	0
Hunterdon	-	0	0	0	0	0	2	0	0	0	2
Somerset	-	0	0	0	0	0	0	0	0	1	1
Mercer	-	0	0	0	0	0	0	0	0	0	0
Total	-	1	20	27	20	24	10	4	1	6	114

\*\* Hunt Closed due to Stay

++ Hunt Opened at 2pm due to Lifting of Stay

## RELATED PAGES

[Historical Black Bear Harvests](#)

[2016 Bear Hunter Survey Results \(pdf\)](#)

[Hunting Permit Information](#)

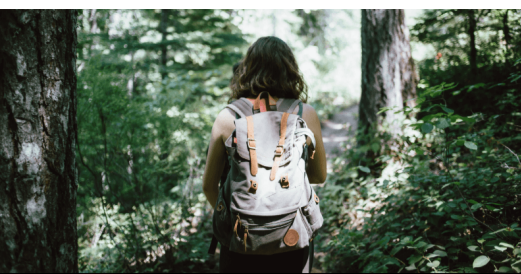
[Non-Resident Hunting Information](#)

[NJ Hunting License Information](#)

Questions? Please [contact us for more information](#).



## Bear Safety Tips



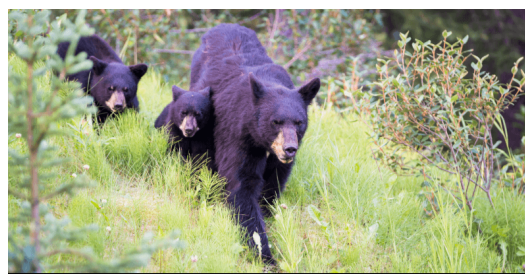
<a href="#">Bear Encounters</a>
<a href="#">Homeowners</a>
<a href="#">Hikers and Campers</a>
<a href="#">Businesses</a>
<a href="#">Townships / Law Enforcement</a>
<a href="#">Farmers</a>
<a href="#">Bear Management</a>

## Prevent Bear Damage



<a href="#">Avoid Attracting Bears</a>
<a href="#">Garbage Management</a>
<a href="#">Pet Owners</a>
<a href="#">Feeding Birds</a>
<a href="#">Beehives / Crops / Livestock</a>

## Bear Basics



<a href="#">Natural History</a>
<a href="#">Biology and Behavior</a>
<a href="#">Bear Research</a>

## Other Resources



<a href="#">Bear Facts for Kids</a>
<a href="#">Publications &amp; Materials</a>
<a href="#">Activity Reports</a>
<a href="#">YouTube Bear Safety Video</a>
<a href="#">Black Bear Education</a>

## Fish & Wildlife

- [Home](#)
- [About NJFW](#)
- [News](#)
- [Events](#)
- [Jobs](#)
- [Licenses & Permits](#)
- [Freshwater](#)
- [Marine](#)
- [Hunting](#)
- [Destinations](#)
- [Conservation](#)
- [Wildlife](#)
- [Education](#)
- [Contact Us](#)

## Environmental Protection

- [Commissioner Shawn M. LaTourette](#)
- [DEP Home](#)
- [Press Releases](#)
- [About DEP](#)
- [Topics](#)
- [Programs/Units](#)
- [DEP Online](#)
- [Contact Us](#)

## Statewide

- [Governor Phil Murphy](#)
- [Lt. Governor Sheila Oliver](#)
- [NJ Home](#)
- [Services A to Z](#)
- [Departments/Agencies](#)
- [FAQs](#)
- [Contact Us](#)
- [Privacy Notice](#)
- [Legal Statement & Disclaimers](#)
- [Accessibility Statement](#)



Copyright © State of New Jersey, 1996-2023  
 Department of Environmental Protection  
 P. O. Box 420  
 Trenton, NJ 08625  
 609-777-3373

Last Update: December 18th, 2022