

DEPARTMENT OF CORRECTIONS, STATE OF NEW JERSEY

WILLIAM H. FAUVER, COMMISSIONER

974-901  
P832  
C3

PROJECTS OF  
NEW JERSEY STATE LIBRARY  
185 W. State St.

# OFFENDERS IN NEW JERSEY CORRECTIONAL INSTITUTIONS ANNUAL REPORT

ON JUNE 8, 1983

BY SELECTED CHARACTERISTICS

DIVISION OF POLICY AND PLANNING  
BUREAU OF CORRECTIONAL INFORMATION AND CLASSIFICATION SERVICES

New Jersey State Library



## INTRODUCTION

THIS REPORT HAS BEEN DEVELOPED TO PROVIDE INFORMATION REGARDING SELECTED OFFENDER CHARACTERISTICS IN EACH CORRECTIONAL COMPLEX, MAJOR INSTITUTION AND SATELLITE HOUSING UNIT UNDER THE JURISDICTION OF THE NEW JERSEY DEPARTMENT OF CORRECTIONS ON JUNE 8, 1983. THE SELECTED CHARACTERISTICS COMPILED IN THIS REPORT ARE BASE OFFENSE AT ADMISSION, TOTAL TERM AT ADMISSION, ETHNICITY, AGE, AND COUNTY OF COMMITMENT.

THE PRISON COMPLEX INCLUDES THE TRENTON, RAHWAY, LEESBURG, MID-STATE, AND CLINTON MEN FACILITIES. THE ADULT DIAGNOSTIC AND TREATMENT CENTER AND CLINTON WOMEN, ALTHOUGH A PART OF THE PRISON COMPLEX ARE COMBINED WITH THE JUVENILE TRAINING SCHOOLS WITHIN THE "OTHER INSTITUTIONS" REPORT.

THE YOUTH CORRECTIONAL COMPLEX CONSISTS OF THE YOUTH RECEPTION AND CORRECTION CENTER - YARDVILLE, THE YOUTH CORRECTIONAL INSTITUTION - BORDENTOWN, AND THE YOUTH CORRECTIONAL INSTITUTION - ANNANDALE. THE JUVENILE TRAINING SCHOOLS INCLUDE THE JAMESBURG TRAINING SCHOOL FOR BOYS AND THE SKILLMAN TRAINING SCHOOL FOR BOYS AND GIRLS.

OFFENDERS REPORTED IN COUNTY FACILITIES (PRISON AND YOUTH COMPLEX) ARE TRANSFERS FROM STATE INSTITUTIONS WHO ARE SERVING THEIR FINAL TWO TO THREE MONTHS AT THE LOCAL LEVEL. THESE FIGURES DO NOT INCLUDE STATE SENTENCED OFFENDERS HOUSED IN THE COUNTY JAILS WHO ARE AWAITING ENTRANCE INTO THE DEPARTMENT OF CORRECTIONS RECEPTION UNITS.

ON JUNE 8, 1983 THERE WERE APPROXIMATELY 1334 STATE SENTENCED OFFENDERS TEMPORARILY HOUSED IN COUNTY FACILITIES AWAITING TRANSFER INTO THE STATE PRISON SYSTEM. CHARACTERISTIC DATA ON THESE OFFENDERS IS NOT INCLUDED IN THIS REPORT. SIMILARLY, THE 486 PRISON AND YOUTH RECEPTION INMATES AND OFFENDERS RESIDENT IN RESIDENTIAL GROUP CENTERS AND COMMUNITY TREATMENT CENTERS ARE NOT INCLUDED IN THESE TABULATIONS.

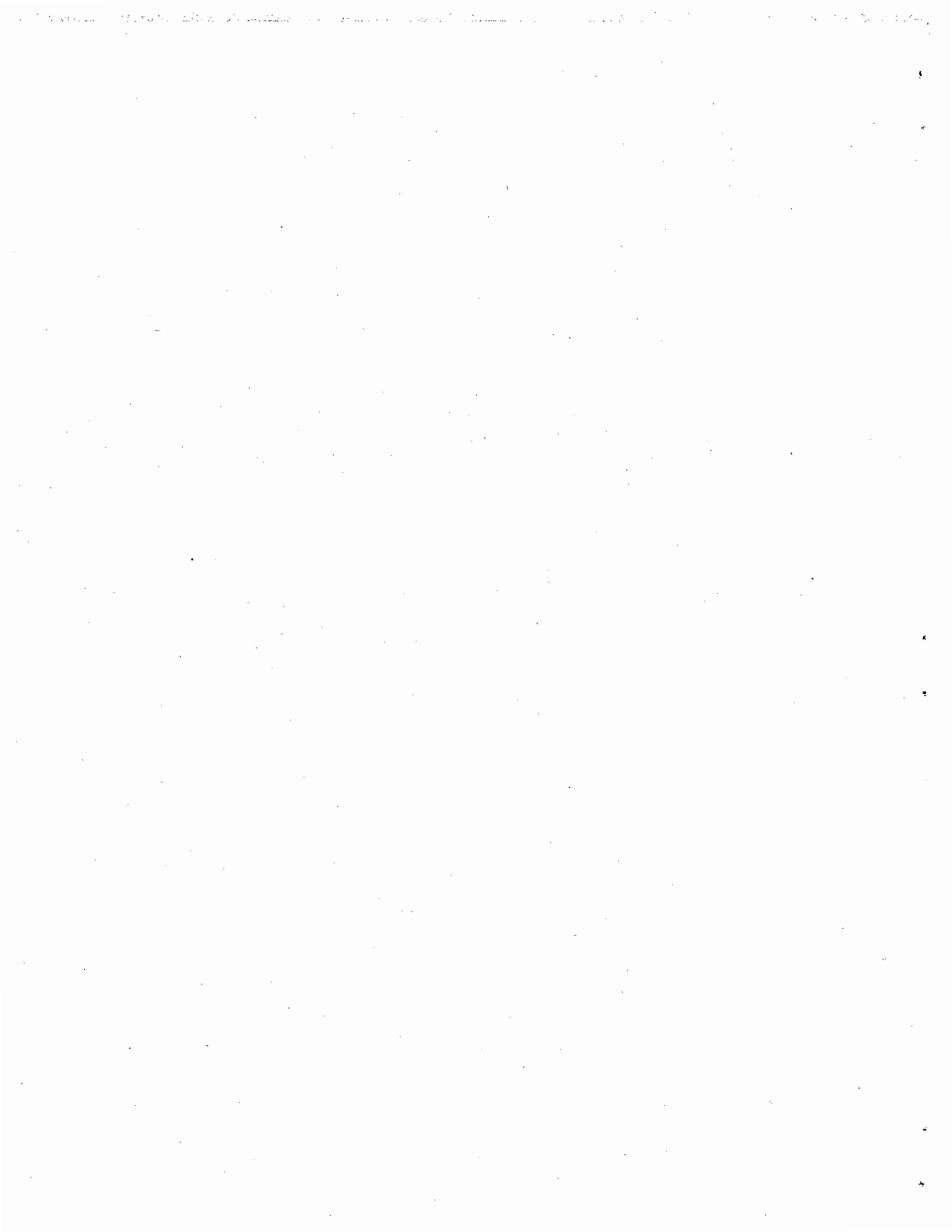
"NOT CODED" ARE RECORDS ON OFFENDERS IN THE CORRECTIONAL SYSTEM IN WHICH ADMISSION CHARACTERISTIC DATA HAS NOT BEEN ENTERED INTO THE COMPUTERIZED INFORMATION SYSTEM AS OF JUNE 8, 1983. ALSO NOTE (-) REPRESENTS FIGURES THAT ARE LESS THAN .5%.

MAJOR INSTITUTIONS WITH SATELLITES INCLUDE THE FOLLOWING:

<u>MAJOR INSTITUTION</u>	<u>SATELLITES</u>
TRENTON STATE PRISON	TRENTON MAIN, VROOM READJUSTMENT UNIT, AND JONES FARM
RAHWAY STATE PRISON	RAHWAY MAIN, RAHWAY CAMP AND MARLBORO CAMP
LEESBURG STATE PRISON	LEESBURG MEDIUM, LEESBURG FARM, AND ANCORA UNIT
YOUTH RECEPTION AND CORRECTION CENTER - YARDVILLE	YARDVILLE MAIN AND WHARTON TRACT
YOUTH CORRECTIONAL INSTITUTION - BORDENTOWN	BORDENTOWN MAIN, NEW LISBON UNIT, AND NPI SKILLMAN
YOUTH CORRECTIONAL INSTITUTION - ANNANDALE	ANNANDALE MAIN, STOKES UNIT, AND HIGH POINT UNIT

## ACKNOWLEDGEMENTS

THE PREPARATION OF THIS REPORT ENTAILED THE ASSISTANCE OF NUMEROUS INDIVIDUALS AND REPORTING UNITS. THE EXTENSIVE DATA COLLECTION EFFORT WAS SIGNIFICANTLY ENHANCED BY THE ASSISTANCE OF THE CORRECTIONAL INFORMATION AND CLASSIFICATION SERVICES DATA BASE, THE PRISON AND YOUTH RECEPTION UNITS AND THE CORRECTIONAL INSTITUTIONS THAT REPORT VALUABLE DATA TO THE DATA BASE DAILY. SPECIAL ACKNOWLEDGEMENT IS GIVEN TO MS. TERRY EVANS, SENIOR STATISTICAL CLERK OF THE CORRECTIONAL INFORMATION AND CLASSIFICATION SERVICES CENTRAL OFFICE REPORT PREPARATION UNIT FOR THE COMPILATION OF DATA AND THE LAYOUT OF THE REPORT FORMAT.



### HIGHLIGHTS

SEVENTY-THREE (73) PERCENT OR 3639 OUT OF 4998 OF ALL OFFENDERS IN THE PRISON COMPLEX WERE COMMITTED FOR CRIMES AGAINST PERSONS WHICH INCLUDE HOMICIDE, RAPE, ASSAULTS, ROBBERY, SODOMY, SEXUAL ABUSE AND OTHER PERSON OFFENSES. SIXTY-FIVE (65) PERCENT OR 5764 OUT OF 8930 OF ALL NEW JERSEY OFFENDERS WERE COMMITTED FOR CRIMES AGAINST PERSONS. THESE FIGURES DO NOT INCLUDE ADDITIONAL SENTENCES FOR CRIMES AGAINST PERSONS.

FIFTY PERCENT OR 4496 OUT OF 8930 OF ALL NEW JERSEY OFFENDERS WERE COMMITTED WITH A MAXIMUM STATUTORY SENTENCE OF 10 YEARS OR MORE. OF THESE 558 OFFENDERS OR 12% ARE SERVING LIFE SENTENCES.

FIFTY-NINE (59) PERCENT OF NEW JERSEY'S OFFENDER POPULATION ARE BLACK, WHILE 28% ARE WHITE AND 11% ARE HISPANIC.

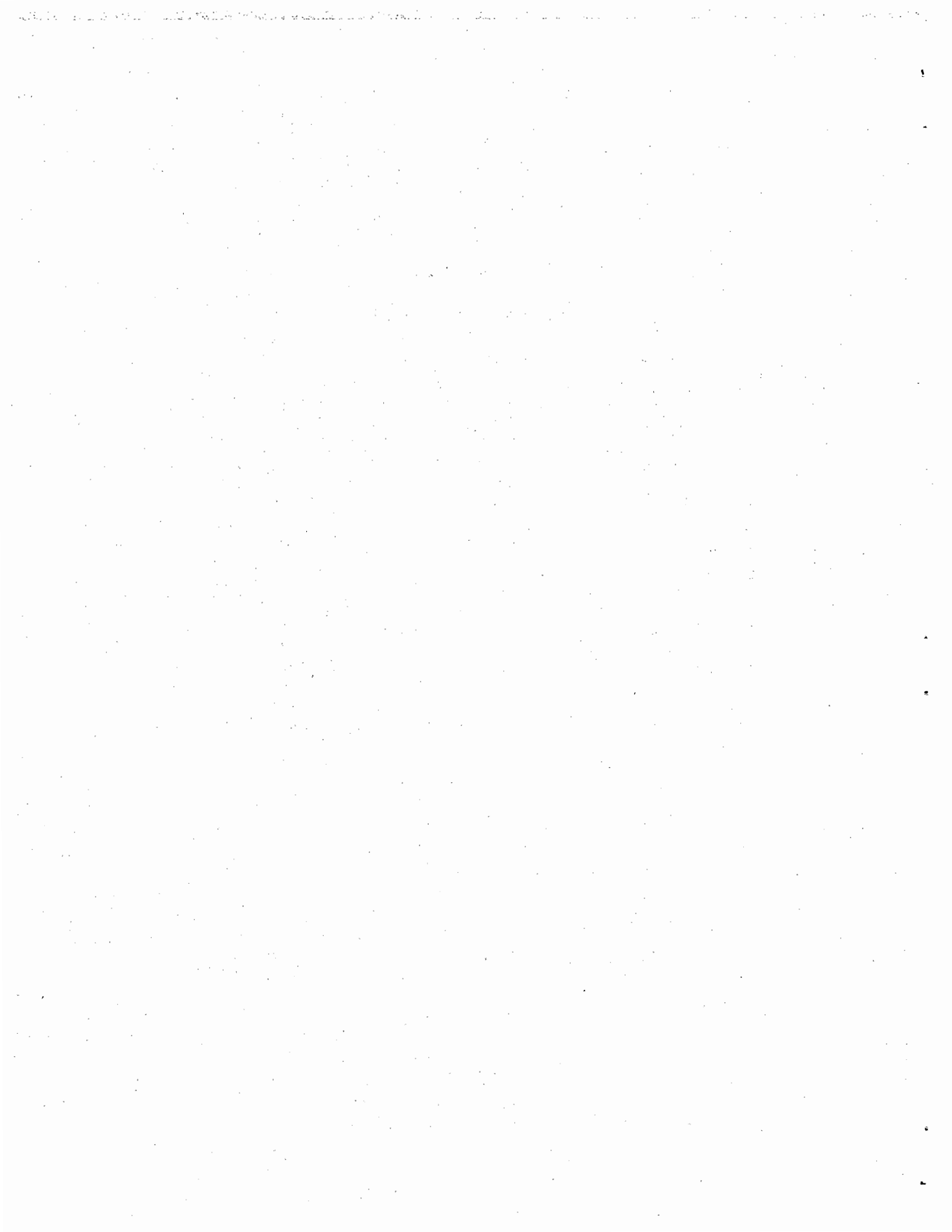
SIXTY-THREE PERCENT OF ALL OFFENDERS IN THE NEW JERSEY DEPARTMENT OF CORRECTIONS ARE UNDER 29 YEARS OF AGE.

OF THE 21 NEW JERSEY COUNTIES, FIVE COUNTIES, ESSEX, PASSAIC, CAMDEN, MONMOUTH, AND UNION REPRESENT MORE THAN HALF (57%) OF THE TOTAL STATE CORRECTIONAL COMMITMENTS. ESSEX COUNTY IS THE HIGHEST CONTRIBUTOR WITH NINETEEN (19) PERCENT.



TABLE OF CONTENTS

<u>REPORT NAME</u>	<u>PAGE</u>
TOTAL COUNTS IN NEW JERSEY STATE CORRECTIONAL INSTITUTIONS AND SATELLITES ON JUNE 8, 1983	1
OFFENDERS IN NEW JERSEY CORRECTIONAL INSTITUTIONS BY BASE OFFENSE	2
PRISON COMPLEX OFFENDERS	3,4
YOUTH COMPLEX OFFENDERS	5,6
WOMEN, JUVENILES, AND SEX OFFENDERS	7,8
OFFENDERS IN NEW JERSEY CORRECTIONAL INSTITUTIONS BY TOTAL TERM AT ADMISSION	9
PRISON COMPLEX OFFENDERS	10,11
YOUTH COMPLEX OFFENDERS	12,13
WOMEN, JUVENILES, AND SEX OFFENDERS	14,15
OFFENDERS IN NEW JERSEY CORRECTIONAL INSTITUTIONS BY ETHNIC IDENTIFICATION	16
PRISON COMPLEX OFFENDERS	17,18
YOUTH COMPLEX OFFENDERS	19,20
WOMEN, JUVENILES, AND SEX OFFENDERS	21,22
OFFENDERS IN NEW JERSEY CORRECTIONAL INSTITUTIONS BY AGE GROUPS	23
PRISON COMPLEX OFFENDERS	24,25
YOUTH COMPLEX OFFENDERS	26,27
WOMEN, JUVENILES, AND SEX OFFENDERS	28,29
OFFENDERS IN NEW JERSEY CORRECTIONAL INSTITUTIONS BY COUNTY OF COMMITMENT	30
PRISON COMPLEX OFFENDERS	31,32
YOUTH COMPLEX OFFENDERS	33,34
WOMEN, JUVENILES AND SEX OFFENDERS	35,36
FOOTNOTES	37

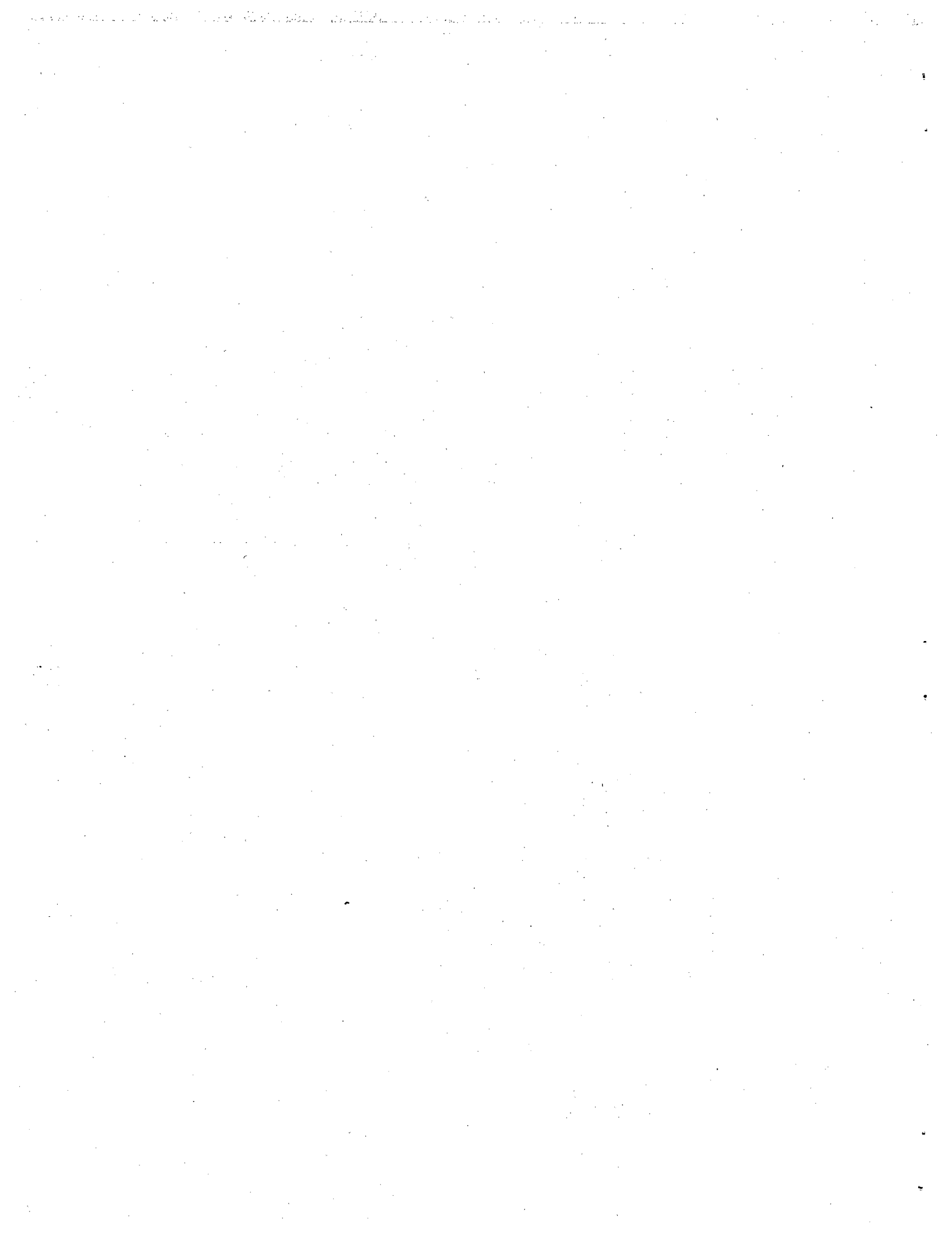


TOTAL COUNTS IN NEW JERSEY STATE CORRECTIONAL INSTITUTIONS AND SATELLITES ON JUNE 8, 1983

TOTAL RESIDENTS	8930
PRISON COMPLEX	4998
TRENTON MAIN	1427
VROOM READJUSTMENT	130
JONES FARM	111
TOTAL TRENTON	1668
RAHWAY MAIN	1230
RAHWAY CAMP	114
MARLBORO CAMP	116
TOTAL RAHWAY	1460
LEESBURG MAIN	728
LEESBURG FARM	414
ANCORA UNIT	104
TOTAL LEESBURG	1246
CLINTON MEN	29
MID-STATE CRCTNL FACILITY	486
COUNTY TRANSFERS - PRISON	109
YOUTH COMPLEX	2768
YARDVILLE -YRCC	799
WHARTON TRACT	59
TOTAL YARDVILLE	858
BORDENTOWN -YCIB	763
NPI UNIT	50
NEW LISBON	69
TOTAL BORDENTOWN	882
ANNANDALE -YCIA	892
STOKES UNIT	70
HIGH POINT	61
TOTAL ANNANDALE	1023
COUNTY TRANSFERS - YOUTH	5
OTHER INSTITUTIONS	1164
AVENEL - ADTC	258
CLINTON WOMEN	321
JAMESBURG BOYS	400
SKILLMAN GIRLS	15
SKILLMAN BOYS	170

NOTE: THE TOTAL RESIDENT COUNT IN THIS REPORT DOES NOT INCLUDE THE FOLLOWING COUNTS:

COUNTY JAIL WAITING LIST	1334
CONTRACT HALFWAY HOUSES	91
HALFWAY HOUSES	49
JUVENILE GROUP CENTERS	376
PRISON RECEPTION	66
YOUTH RECEPTION	44
TOTAL	1960



OFFENDERS IN NEW JERSEY CORRECTIONAL INSTITUTIONS ON JUNE 8, 1983 BY BASE OFFENSE

IN THESE TABULATIONS, THE BASE OFFENSE FOR AN OFFENDER IS THAT OFFENSE WHICH CARRIES THE LONGEST TERM AT THE TIME OF ADMISSION.

VIOLENT CRIMES INCLUDE MURDER AND NON NEGLIGENT MANSLAUGHTER, RAPE, ASSAULTS AND ATROCIOUS ASSAULTS, ROBBERY, AND SEXUAL OFFENSES, I.E. INCEST, CARNAL ABUSE, SODOMY, IMPAIRING THE MORALS OF A MINOR, AND ASSAULT WITH INTENT TO COMMIT CARNAL ABUSE.

OTHER PERSONS OFFENSES INCLUDE NEGLIGENT MANSLAUGHTER, INDECENT EXPOSURE, LEWDNESS, SEDUCTION, ATTEMPTED SEX OFFENSES, AND WEAPON OFFENSES.

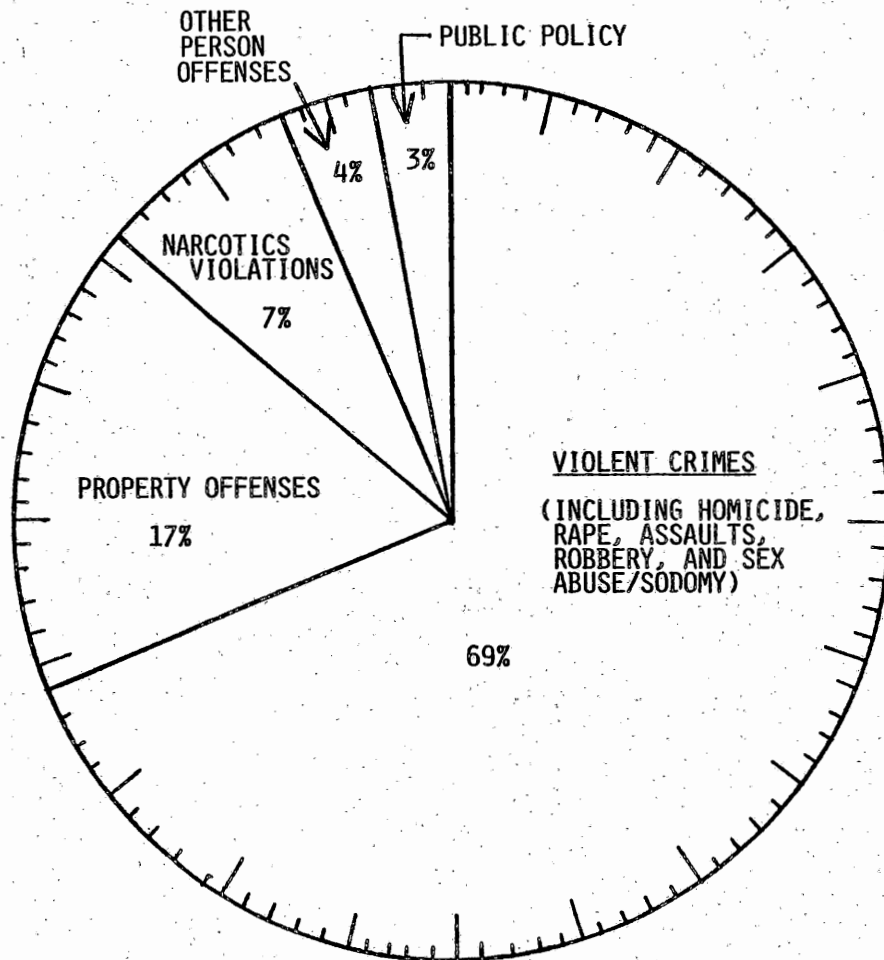
PROPERTY OFFENSES INCLUDE BREAKING AND ENTERING, LARCENY, FORGERY, EMBEZZLEMENT, AUTO THEFT, AND RECEIVING OR POSSESSING STOLEN PROPERTY.

PUBLIC POLICY OFFENSES INCLUDE PROSTITUTION, GAMBLING, JUVENILE OR FAMILY RELATED OFFENSES, AND OTHER OFFENSES INCLUDING ARSON, CONSPIRACY, AND VANDALISM.

OFFENDERS IN CORRECTIONAL INSTITUTIONS ON JUNE 8, 1983 BY BASE OFFENSE						
BASE OFFENSE	TOTAL	PRISON COMPLEX	YOUTH COMPLEX	ADTC AVENEL	CLINTON WOMEN	TRAINING SCHOOLS
TOTAL OFFENDERS (NUMBER)	8930	4998	2768	258	321	585
VIOLENT CRIMES	5450	3457	1383	247	156	206
OTHER PERSONS OFFENSES	314	181	104	6	12	11
PROPERTY OFFENSES	2095	860	910	0	88	237
PUBLIC POLICY	321	132	107	2	11	69
NARCOTICS VIOLATIONS	654	338	246	0	49	21
NOT CODED	96	30	18	3	5	41
TOTAL OFFENDERS (PERCENT)	100%	100%	100%	100%	100%	100%
VIOLENT CRIMES	61	69	50	96	49	35
OTHER PERSONS OFFENSES	4	4	4	2	4	2
PROPERTY OFFENSES	23	17	33	0	27	40
PUBLIC POLICY	4	3	4	1	3	12
NARCOTICS VIOLATIONS	7	7	9	0	15	4
NOT CODED	1	-	-	1	2	7

CRIMES AGAINST PERSONS COMPRISE 73% OF PRISON INMATES, 54% OF YOUTH CORRECTIONAL INMATES, 98% OF AVENEL INMATES, 53% OF CLINTON WOMEN, AND 37% OF TRAINING SCHOOL INMATES.

PRISON COMPLEX OFFENDERS  
ON JUNE 8, 1983  
BY BASE OFFENSE



INSTITUTION	TOTAL OFFENDERS	VIOLENT CRIMES	HOMICIDE	RAPE	ASSAULTS	ROBBERY	SEX ABUSE SODOMY	OTHER PERS OFFENSES	PROPERTY OFFENSES	PUBLIC POLICY	NARC LAW VIOLATION	NOT CODED
TRENTON MAIN	1,427 100.00%	1,206 84.51%	514 42.62%	97 8.04%	141 11.69%	431 35.73%	23 1.90%	26 1.82%	129 9.03%	25 1.75%	31 2.17%	10 .70%
VROOM READJUST	130 100.00%	107 82.30%	31 28.97%	6 5.60%	18 16.82%	49 45.79%	3 2.80%	6 4.61%	12 9.23%	1 .76%	2 1.53%	2 1.53%
JONES FARM	111 100.00%	6 5.40%	0 .00%	0 .00%	1 16.66%	4 66.66%	0 .00%	0 .00%	55 49.54%	17 15.31%	32 28.82%	2 1.80%
TRENTON AND SATELLITES	1,668 100.00%	1,319 79.07%	546 41.39%	103 7.80%	160 12.13%	484 36.69%	26 1.97%	32 1.91%	196 11.75%	43 2.57%	65 3.89%	13 .77%

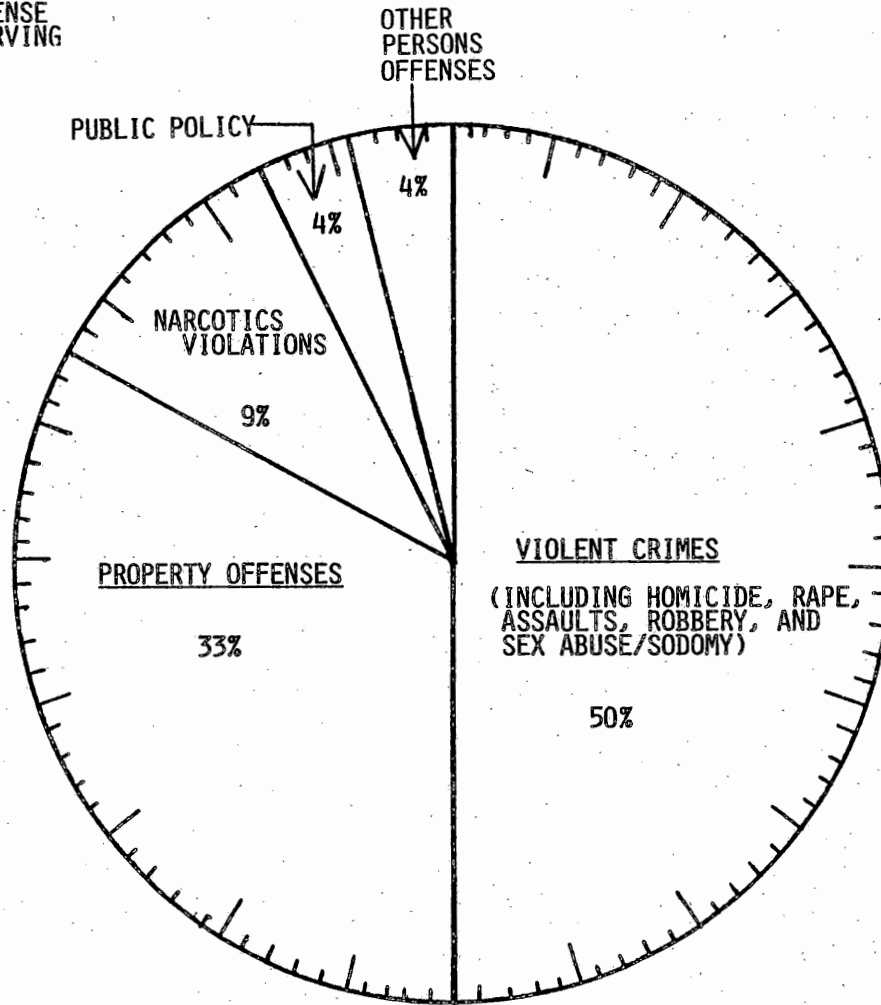
RAHWAY MAIN	1,230 100.00%	965 78.45%	225 23.31%	116 12.02%	96 9.94%	502 52.02%	26 2.69%	43 3.49%	144 11.70%	25 2.03%	45 3.65%	8 .65%
RAHWAY CAMP	114 100.00%	101 88.59%	87 86.13%	1 .99%	3 2.97%	10 9.90%	.00%	3 2.63%	7 6.14%	2 1.75%	1 .87%	.00%
MARLBORO CAMP	116 100.00%	57 49.13%	.00%	.00%	10 17.54%	47 82.45%	.00%	2 1.72%	31 26.72%	6 5.17%	20 17.24%	.00%
RAHWAY AND SATELLITES	1,460 100.00%	1,123 76.91%	312 27.78%	117 10.41%	109 9.70%	559 49.77%	26 2.31%	48 3.28%	182 12.46%	33 2.26%	66 4.52%	8 .54%
LEESBURG MAIN	728 100.00%	424 58.24%	92 21.69%	41 9.66%	77 18.16%	204 48.11%	10 2.35%	42 5.76%	164 22.52%	22 3.02%	73 10.02%	3 .41%
LEESBURG FARM	414 100.00%	254 61.35%	79 31.10%	.00%	42 16.53%	131 51.57%	2 .78%	18 4.34%	99 23.91%	3 .72%	39 9.42%	1 .24%
ANCORA UNIT	104 100.00%	32 30.76%	12 37.50%	.00%	8 25.00%	12 37.50%	.00%	9 8.65%	42 40.38%	4 3.84%	16 15.38%	1 .96%
LEESBURG AND SATELLITES	1,246 100.00%	710 56.98%	183 25.77%	41 5.77%	127 17.88%	347 48.87%	12 1.69%	69 5.53%	305 24.47%	29 2.32%	128 10.27%	5 .40%
CLINTON MEN	29 100.00%	19 65.51%	8 42.10%	1 5.26%	5 26.31%	5 26.31%	.00%	1 3.44%	3 10.34%	3 10.34%	3 10.34%	.00%
MID STATE FAC	486 100.00%	241 49.58%	19 7.88%	47 19.50%	72 29.87%	98 40.66%	5 2.07%	26 5.34%	138 28.39%	22 4.52%	56 11.52%	3 .61%
COUNTY TRANSFERS	109 100.00%	46 42.20%	3 6.52%	1 2.17%	11 23.91%	31 67.39%	.00%	5 4.58%	36 33.02%	2 1.83%	20 18.34%	.00%
PRISON COMPLEX TOTALS	4,998 100.00%	3,458 69.18%	1,071 30.97%	310 8.96%	484 13.99%	1,524 44.07%	69 1.99%	181 3.62%	860 17.20%	132 2.64%	338 6.76%	29 .58%

MORE THAN ONE THIRD (36%) OF ALL OFFENDERS AT TRENTON PRISON HAVE BEEN CONVICTED OF HOMICIDE.

SEVEN OUT OF TEN OFFENDERS (72%) IN THE PRISON SYSTEM HAVE BEEN CONVICTED OF A CRIME OF A VIOLENT NATURE WHICH INCLUDES HOMICIDE, RAPE, ASSAULT, ROBBERY, SEX ABUSE/SODOMY AND OTHER PERSON OFFENSES.

THIRTY-ONE PERCENT OF THE VIOLENT CRIME OFFENDERS IN THE PRISON SYSTEM HAVE BEEN CONVICTED OF HOMICIDE.

YOUTH CORRECTIONAL COMPLEX OFFENDERS  
ON JUNE 8, 1983 BY BASE OFFENSE  
(INCLUDES 1021 OFFENDERS SERVING  
DETERMINATE SENTENCES)

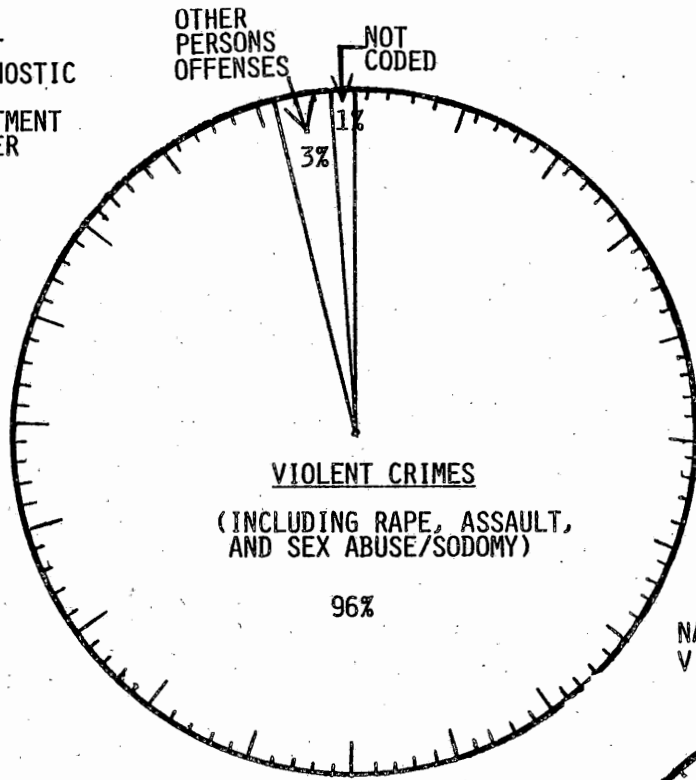


YOUTH CORRECTIONAL OFFENDERS ON JUNE 8, 1983 BY BASE OFFENSE

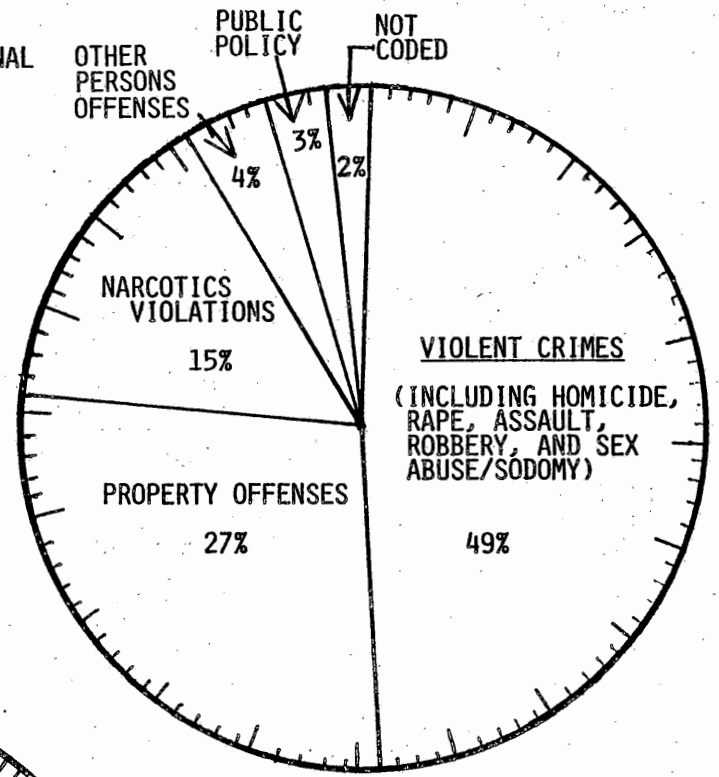
INSTITUTION	TOTAL OFFENDERS	VIOLENT CRIMES	HOMICIDE	RAPE	ASSAULTS	ROBBERY	SEX ABUSE SODOMY	OTHER PERS OFFENSES	PROPERTY OFFENSES	PUBLIC POLICY	NARC LAW VIOLATION	NOT CODED
CORRECTION-YRD	799 100.00%	463 57.94%	108 23.32%	47 10.15%	84 18.14%	222 47.94%	2 .43%	30 3.75%	233 29.16%	32 4.00%	36 4.50%	5 .62%
WHARTON TRACT	59 100.00%	18 30.50%	1 5.55%	.00%	3 16.66%	14 77.77%	.00%	1 1.69%	30 50.84%	3 5.08%	6 10.16%	1 1.69%
YARDVILLE AND SATELLITES	858 100.00%	481 56.06%	109 22.66%	47 9.77%	87 18.08%	236 49.06%	2 .41%	31 3.61%	263 30.65%	35 4.07%	42 4.89%	6 .69%
BORDENTOWN YTH	763 100.00%	438 57.40%	68 15.52%	45 10.27%	69 15.75%	254 57.99%	2 .45%	32 4.19%	219 28.70%	21 2.75%	51 6.68%	2 .26%
NPI UNIT	50 100.00%	27 54.00%	4 14.81%	.00%	4 14.81%	19 70.37%	.00%	3 6.00%	16 32.00%	2 4.00%	2 4.00%	.00%
NEW LISBON	69 100.00%	35 50.72%	4 11.42%	.00%	11 31.42%	20 57.14%	.00%	3 4.34%	18 26.08%	4 5.79%	9 13.04%	.00%
BORDENTOWN AND SATELLITES	882 100.00%	500 56.68%	76 15.20%	45 9.00%	84 16.80%	293 58.60%	2 .40%	38 4.30%	253 28.68%	27 3.06%	62 7.02%	2 .22%
ANNANDALE YTH	892 100.00%	350 39.23%	7 2.00%	21 6.00%	74 21.14%	247 70.57%	1 .28%	34 3.81%	349 39.12%	34 3.81%	124 13.90%	1 .11%
STOKES UNIT	70 100.00%	30 42.85%	2 6.66%	.00%	6 20.00%	22 73.33%	.00%	.00%	15 21.42%	8 11.42%	8 11.42%	9 12.85%
HIGH POINT	61 100.00%	21 34.42%	.00%	.00%	4 19.04%	17 80.95%	.00%	1 1.63%	27 44.26%	3 4.91%	9 14.75%	.00%
ANNANDALE AND SATELLITES	1,023 100.00%	401 39.19%	9 2.24%	21 5.23%	84 20.94%	286 71.32%	1 .24%	35 3.42%	391 38.22%	45 4.39%	141 13.78%	10 .97%
COUNTY TRANSFERS	5 100.00%	1 20.00%	.00%	.00%	.00%	1 100.00%	.00%	.00%	3 60.00%	.00%	1 20.00%	.00%
YOUTH COMPLEX TOTALS	2,768 100.00%	1,383 49.96%	194 14.02%	113 8.17%	255 18.43%	816 59.00%	5 .36%	104 3.75%	910 32.87%	107 3.86%	246 8.88%	18 .65%

FIFTY-FOUR PERCENT OF THE YOUTH CORRECTIONAL OFFENDERS HAVE BEEN INCARCERATED FOR PERSON RELATED OFFENSES.  
 THIRTY-THREE PERCENT OF THE YOUTH CORRECTIONAL OFFENDERS HAVE BEEN INCARCERATED FOR PROPERTY OFFENSES.

ADULT  
DIAGNOSTIC  
AND  
TREATMENT  
CENTER

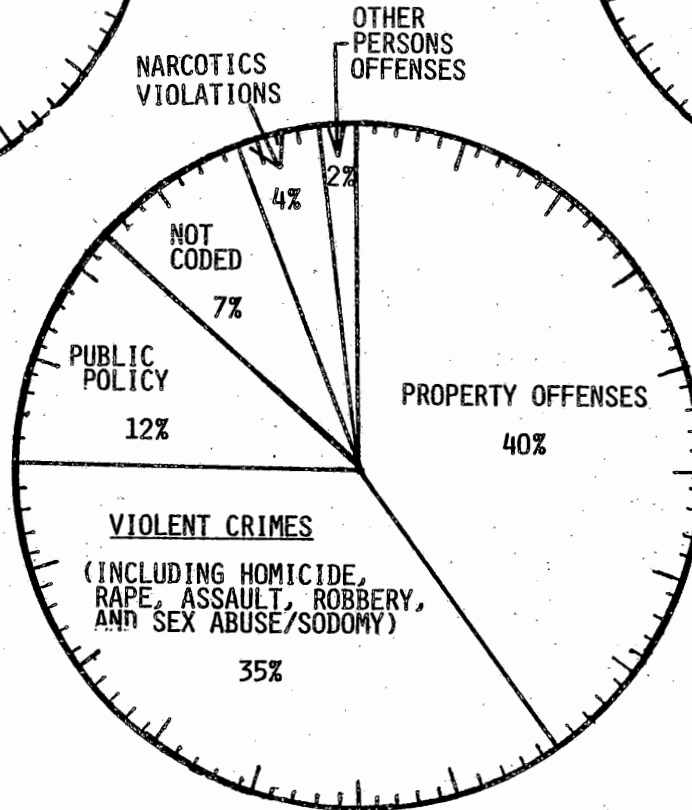


CLINTON  
CORRECTIONAL  
WOMEN



TRAINING SCHOOLS

JAMESBURG - BOYS  
SKILLMAN - GIRLS  
SKILLMAN - BOYS



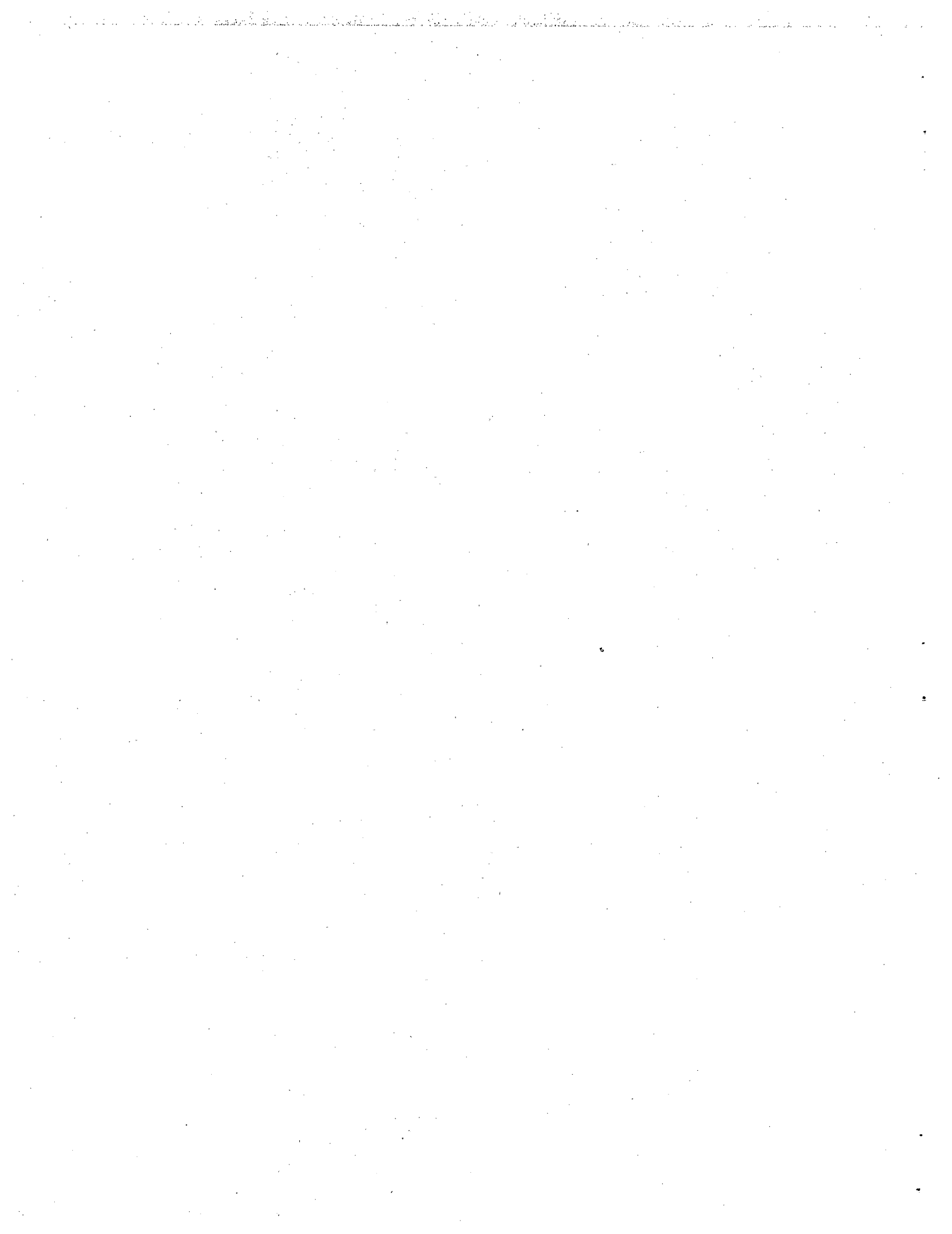
OFFENDERS IN INSTITUTIONS FOR WOMEN, BOYS, GIRLS, AND SEX OFFENDERS ON JUNE 8, 1983 BY BASE OFFENSE

INSTITUTION	TOTAL OFFENDERS	VIOLENT CRIMES	HOMICIDE	RAPE	ASSAULTS	ROBBERY	SEX ABUSE SODOMY	OTHER PERS OFFENSES	PROPERTY OFFENSES	PUBLIC POLICY	NARC LAW VIOLATION	NOT CODED
ADTC	258 100.00%	247 95.73%		188 76.11%	1 .40%		58 23.48%	6 2.32%		2 .77%		3 1.16%
CLINTON-WOMEN	321 100.00%	156 48.59%	69 44.23%	2 1.28%	29 18.58%	56 35.89%		12 3.73%	88 27.41%	11 3.42%	49 15.26%	5 1.55%
JAMESBURG BOYS	400 100.00%	160 40.00%	20 12.50%	15 9.37%	49 30.62%	73 45.62%	3 1.87%	7 1.75%	139 34.75%	44 11.00%	17 4.25%	33 8.25%
SKILLMAN GIRLS	15 100.00%	3 20.00%			1 33.33%	2 66.66%			3 20.00%	6 40.00%	1 6.66%	2 13.33%
SKILLMAN BOYS	170 100.00%	43 25.29%		4 9.30%	11 25.58%	28 65.11%		4 2.35%	95 55.88%	19 11.17%	3 1.76%	6 3.52%
OTHER INSTITUTIONS TOTALS	1,164 100.00%	609 52.31%	89 14.61%	209 34.31%	91 14.94%	159 26.10%	61 10.01%	29 2.49%	325 27.92%	82 7.04%	70 6.01%	49 4.20%

NINETY-SIX PERCENT OF THE OFFENDERS AT THE AVENEL ADULT DIAGNOSTIC AND TREATMENT CENTER (ADTC) WERE COMMITTED FOR VIOLENT CRIMES.

FORTY-NINE PERCENT OF THE WOMEN AT CLINTON WERE COMMITTED FOR VIOLENT CRIMES.

FORTY-ONE PERCENT OF THE JUVENILE OFFENDERS AT THE TRAINING SCHOOLS WERE COMMITTED FOR PROPERTY OFFENSES.



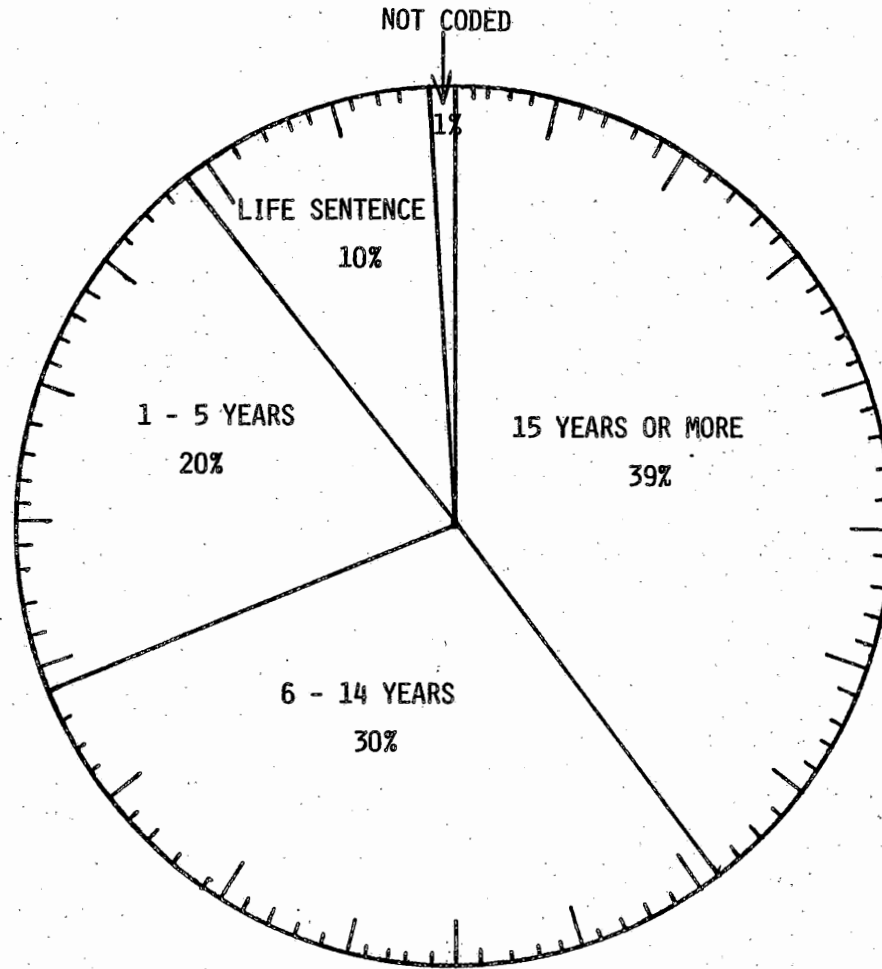
OFFENDERS IN NEW JERSEY CORRECTIONAL INSTITUTIONS ON JUNE 8, 1983 BY TOTAL TERM AT ADMISSION

"TOTAL TERM AT ADMISSION" IS THE MAXIMUM STATUTORY SENTENCE RECEIVED BY EACH OFFENDER AT THE TIME OF COMMITMENT FROM THE COMMUNITY OR FROM PAROLE. NEITHER ADDITIONAL SENTENCES RECEIVED WHILE IN CUSTODY OR COUNTY JAIL, COMMUTATION, WORK, OR MINIMUM CUSTODY CREDITS EARNED BY THE OFFENDER AFTER ADMISSION ARE REFLECTED IN TOTAL TERM AT ADMISSION.

OFFENDERS IN CORRECTIONAL INSTITUTIONS ON JUNE 8, 1983 BY TOTAL TERM AT ADMISSION						
TOTAL TERM AT ADMISSION	TOTAL	PRISON COMPLEX	YOUTH COMPLEX	ADTC AVENEL	CLINTON WOMEN	TRAINING SCHOOL
TOTAL OFFENDERS (NUMBER)	8930	4948	2768	258	321	585
1 YR.	147	57	72	0	7	11
2-5 YRS.	3113	972	1462	18	145	516
6-9 YRS.	1174	711	382	34	45	2
10-14 YRS.	1261	777	401	53	28	2
15-19 YRS.	1011	733	207	42	27	2
20 YRS. OR MORE	1516	1200	170	107	37	2
LIFE SENTENCES	558	502	35	1	15	5
NOT CODED	150	46	39	3	17	45
TOTAL OFFENDERS (PERCENT)	100%	100%	100%	100%	100%	100%
1 YR.	2	1	3	0	2	2
2-5 YRS.	35	19	53	8	45	88
6-9 YRS.	13	14	14	13	14	-
10-14 YRS.	14	16	15	21	9	-
15-19 YRS.	11	15	7	16	8	-
20 YRS. OR MORE	17	24	6	41	12	-
LIFE SENTENCES	6	10	1	-	5	2
NOT CODED	2	1	1	1	5	8

AMONG NEW JERSEY CORRECTIONAL OFFENDERS:  
 37% ARE SERVING TERMS OF 1 - 5 YEARS,  
 27% ARE SERVING TERMS OF 6 - 14 YEARS,  
 28% ARE SERVING TERMS OF 15 YEARS OR MORE,  
 6% OR 558 OFFENDERS ARE SERVING LIFE SENTENCES.

PRISON COMPLEX OFFENDERS  
ON JUNE 8, 1983 BY  
TOTAL TERM AT ADMISSION



PRISON COMPLEX OFFENDERS ON JUNE 8, 1983 BY TOTAL TERM AT ADMISSION

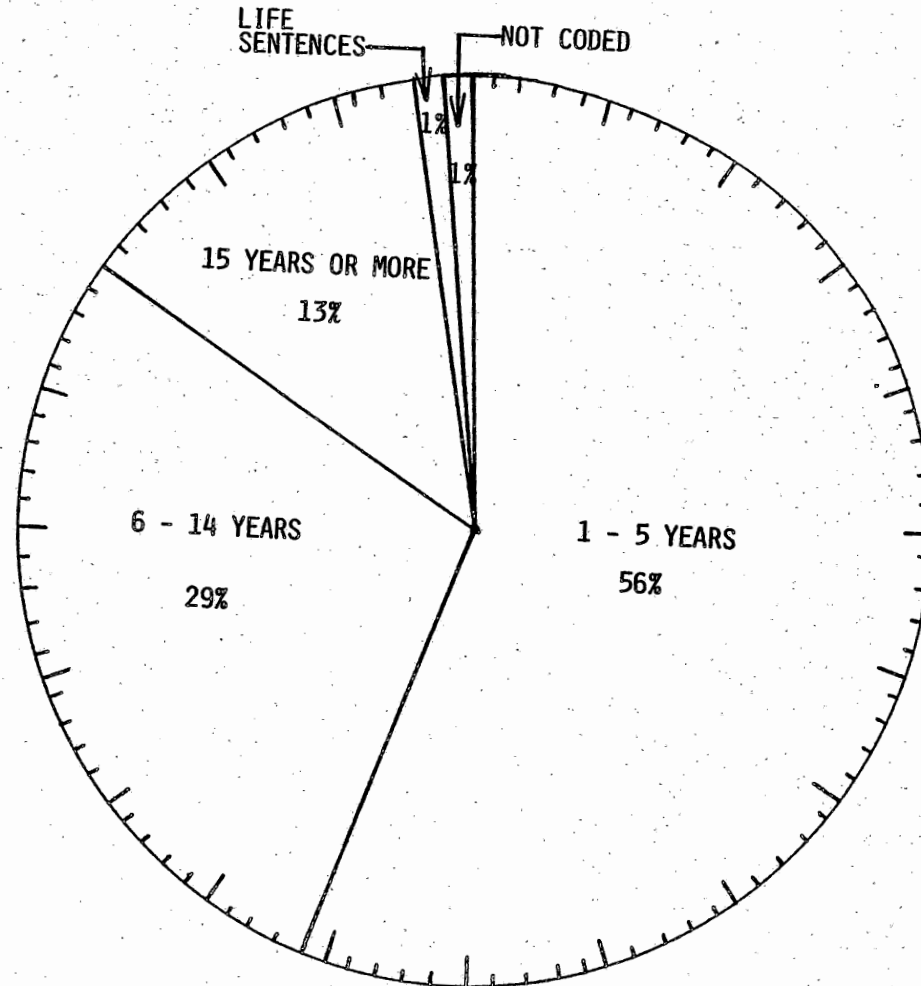
INSTITUTION	TOTAL OFFENDERS	1 YEAR	2-5 YEARS	6-9 YEARS	10-14 YEARS	15-19 YEARS	20 OR MORE YRS	LIFE SENTENCE	NOT CODED
TRENTON MAIN	1,427 100.00%	5 .35%	140 9.81%	100 7.00%	129 9.03%	134 9.39%	641 44.91%	263 18.43%	15 1.05%
VROOM READJUST	130 100.00%	1 .76%	13 10.00%	15 11.53%	24 18.46%	22 16.92%	33 25.38%	18 13.84%	4 3.07%
JONES FARM	111 100.00%	9 8.10%	92 82.88%	2 1.80%	2 1.80%	1 .90%	3 2.70%	1 .90%	1 .90%
TRENTON AND SATELLITES	1,668 100.00%	15 .89%	245 14.68%	117 7.01%	155 9.29%	157 9.41%	677 40.58%	282 16.90%	20 1.19%
RAHWAY MAIN	1,230 100.00%	5 .40%	127 10.32%	114 9.26%	210 17.07%	303 24.63%	368 29.91%	89 7.23%	14 1.13%
RAHWAY CAMP	114 100.00%	1 .87%	5 4.38%	6 5.26%	3 2.63%	11 9.64%	36 31.57%	52 45.61%	.00%
MARLBORO CAMP	116 100.00%	.00%	25 21.55%	20 17.24%	26 22.41%	33 28.44%	12 10.34%	.00%	.00%
RAHWAY AND SATELLITE	1,460 100.00%	6 .41%	157 10.75%	140 9.58%	239 16.36%	347 23.76%	416 28.49%	141 9.65%	14 .95%
LEESBURG MAIN	728 100.00%	13 1.78%	200 27.47%	155 21.29%	159 21.84%	107 14.69%	53 7.28%	35 4.80%	6 .82%
LEESBURG FARM	414 100.00%	4 .96%	93 22.46%	86 20.77%	95 22.94%	59 14.25%	37 8.93%	39 9.42%	1 .24%
ANCORA UNIT	104 100.00%	3 2.88%	48 46.15%	26 25.00%	12 11.53%	10 9.61%	2 1.92%	1 .96%	2 1.92%
LEESBURG AND SATELLITES	1,246 100.00%	20 1.60%	341 27.36%	267 21.42%	266 21.34%	176 14.12%	92 7.38%	75 6.01%	9 .72%
CLINTON-MEN	29 100.00%	.00%	8 27.58%	9 31.03%	3 10.34%	4 13.79%	2 6.89%	3 10.34%	.00%
MID STATE FAC	486 100.00%	14 2.88%	172 35.39%	155 31.89%	96 19.75%	36 7.40%	9 1.85%	1 .20%	3 .61%
COUNTY TRANSFERS	109 100.00%	2 1.83%	49 44.95%	23 21.10%	18 16.51%	13 11.92%	4 3.66%	.00%	.00%
PRISON COMPLEX TOTALS	4,998 100.00%	57 1.14%	972 19.44%	711 14.22%	777 15.54%	733 14.66%	1,200 24.00%	502 10.04%	46 .92%

SIXTY-NINE PERCENT OF ALL OFFENDERS AT TRENTON MAIN ARE SERVING 20 YEARS OR MORE, WITH 263 OR 29% OF THOSE SERVING LIFE SENTENCES.

SIXTY-TWO PERCENT OF ALL OFFENDERS AT RAHWAY ARE SERVING SENTENCES GREATER THAN 15 YEARS WITH 457 SERVING SENTENCES GREATER THAN 20 YEARS, 89 OR 19% OF WHICH ARE SERVING LIFE SENTENCES.

ALMOST ONE HALF OF ALL OFFENDERS AT LEESBURG AND ITS SATELLITE UNITS ARE SERVING SENTENCES OF 10 YEARS OR MORE, AND 44% OF ALL OFFENDERS AT LEESBURG FARM ARE SERVING SENTENCES LESS THAN 10 YEARS.

YOUTH CORRECTIONAL COMPLEX OFFENDERS  
ON JUNE 8, 1983 (INCLUDING 1021  
PRISON OFFENDERS) BY TOTAL TERM AT ADMISSION



YOUTH CORRECTIONAL OFFENDERS ON JUNE 8, 1983 BY TOTAL TERM AT ADMISSION

INSTITUTION	TOTAL OFFENDERS	1 YEAR	2-5 YEARS	6-9 YEARS	10-14 YEARS	15-19 YEARS	20 OR MORE YRS	LIFE SENTENCE	NOT CODED
CORRECTION-YRD	799 100.00%	11 1.37%	387 48.43%	73 9.13%	109 13.64%	92 11.51%	100 12.51%	20 2.50%	7 .87%
WHARTON TRACT	59 100.00%	2 3.38%	43 72.88%	6 10.16%	6 10.16%	.00%	1 1.69%	.00%	1 1.69%
YARVILLE AND SATELLITES	858 100.00%	13 1.51%	430 50.11%	79 9.20%	115 13.40%	92 10.72%	101 11.77%	20 2.33%	8 .93%
BORDENTOWN YTH	763 100.00%	12 1.57%	295 38.66%	115 15.07%	151 19.79%	96 12.58%	64 8.38%	14 1.83%	16 2.09%
NPI UNIT	50 100.00%	.00%	21 42.00%	9 18.00%	11 22.00%	3 6.00%	2 4.00%	.00%	4 8.00%
NEW LISBON	69 100.00%	6 8.69%	31 44.92%	12 17.39%	18 26.08%	1 1.44%	1 1.44%	.00%	.00%
BORDENTOWN AND SATELLITES	882 100.00%	18 2.04%	347 39.34%	136 15.41%	180 20.40%	100 11.33%	67 7.59%	14 1.58%	20 2.26%
ANNANDALE YTH	892 100.00%	36 4.03%	582 65.24%	157 17.60%	99 11.09%	15 1.68%	2 .22%	.00%	1 .11%
STOKES UNIT	70 100.00%	.00%	58 82.85%	.00%	1 1.42%	.00%	.00%	1 1.42%	10 14.28%
HIGH POINT	61 100.00%	5 8.19%	41 67.21%	10 16.39%	5 8.19%	.00%	.00%	.00%	.00%
ANNANDALE AND SATELLITES	1,023 100.00%	41 4.00%	681 66.56%	167 16.32%	105 10.26%	15 1.46%	2 .19%	1 .09%	11 1.07%
COUNTY TRANSFERS	5 100.00%	.00%	4 80.00%	.00%	1 20.00%	.00%	.00%	.00%	.00%
YOUTH COMPLEX TOTALS	2,768 100.00%	72 2.60%	1,462 52.81%	382 13.80%	401 14.48%	207 7.47%	170 6.14%	35 1.26%	39 1.40%

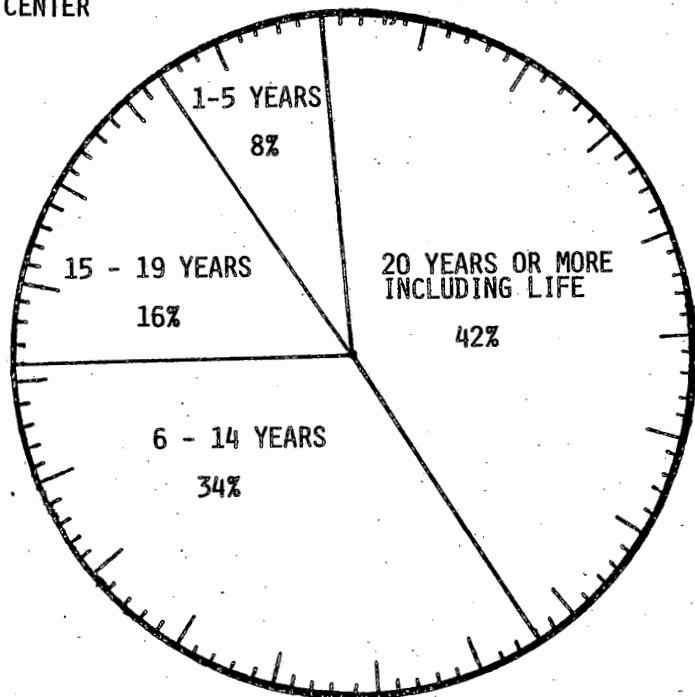
13

FORTY PERCENT OF THE OFFENDERS AT YARVILLE CORRECTIONAL INSTITUTION AND 43% OF THE OFFENDERS AT BORDENTOWN CORRECTIONAL INSTITUTION ARE SERVING SENTENCES OF 10 YEARS OR MORE.

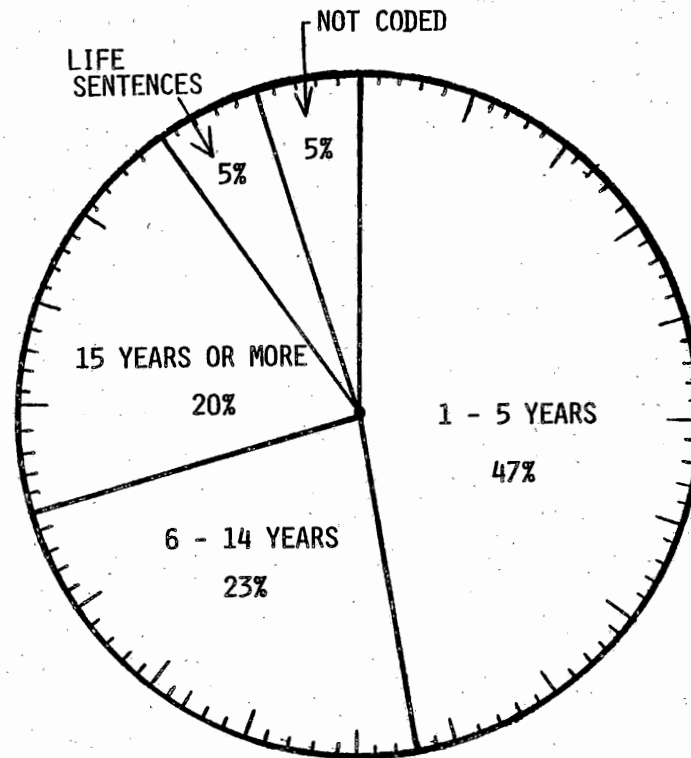
FIFTY-NINE PERCENT OF THE OFFENDERS AT YARVILLE CORRECTIONAL, 55% OF THE OFFENDERS AT BORDENTOWN CORRECTIONAL, AND 87% OF THE OFFENDERS AT ANNANDALE CORRECTIONAL ARE SERVING SENTENCES LESS THAN TEN YEARS.

THIRTY-FIVE OR 1% OF THE YOUTH CORRECTIONAL INMATES ARE SERVING LIFE SENTENCES.

ADULT DIAGNOSTIC  
AND TREATMENT  
CENTER

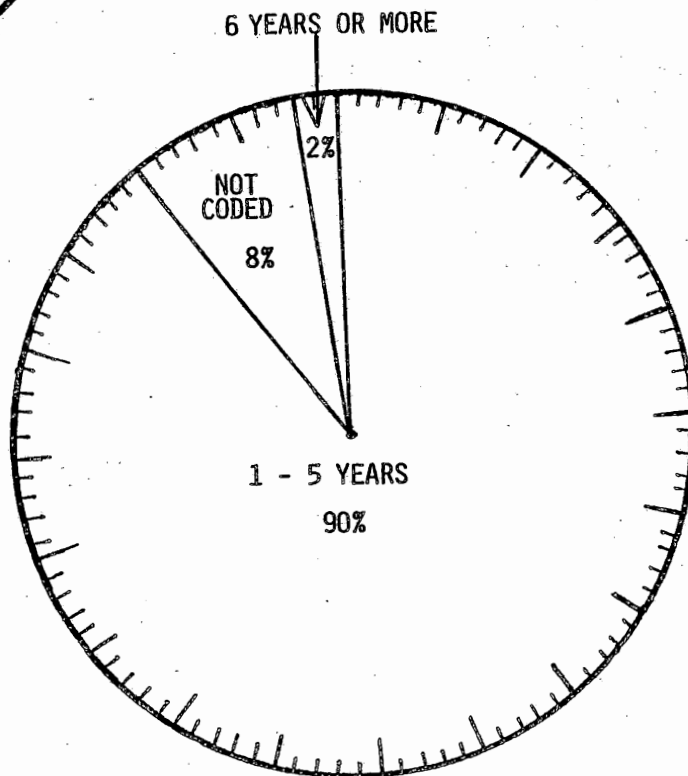


CLINTON  
CORRECTIONAL  
WOMEN



TRAINING SCHOOLS

JAMESBURG - BOYS  
SKILLMAN - GIRLS  
SKILLMAN - BOYS



OFFENDERS ON INSTITUTIONS FOR WOMEN, BOYS, GIRLS, AND SEX OFFENDERS ON JUNE 8, 1983 BY TOTAL TERM AT ADMISSION

INSTITUTION	TOTAL OFFENDERS	1 YEAR	2-5 YEARS	6-9 YEARS	10-14 YEARS	15-19 YEARS	20 OR MORE YRS	LIFE SENTENCE	NOT CODED
ADTC	258 100.00%	.00%	18 6.97%	34 13.17%	53 20.54%	42 16.27%	107 41.47%	1 .38%	3 1.16%
CLINTON-WOMEN	321 100.00%	7 2.18%	145 45.17%	45 14.01%	28 8.72%	27 8.41%	37 11.52%	15 4.67%	17 5.29%
JAMESBURG BOYS	400 100.00%	7 1.75%	344 86.00%	2 .50%	2 .50%	2 .50%	2 .50%	5 1.25%	36 9.00%
SKILLMAN GIRLS	15 100.00%	1 6.66%	11 73.33%	.00%	.00%	.00%	.00%	.00%	3 20.00%
SKILLMAN BOYS	170 100.00%	3 1.76%	161 94.70%	.00%	.00%	.00%	.00%	.00%	6 3.52%
OTHER INSTITUTIONS TOTALS	1,164 100.00%	18 1.54%	679 58.33%	81 6.95%	83 7.13%	71 6.09%	146 12.54%	21 1.80%	65 5.58%

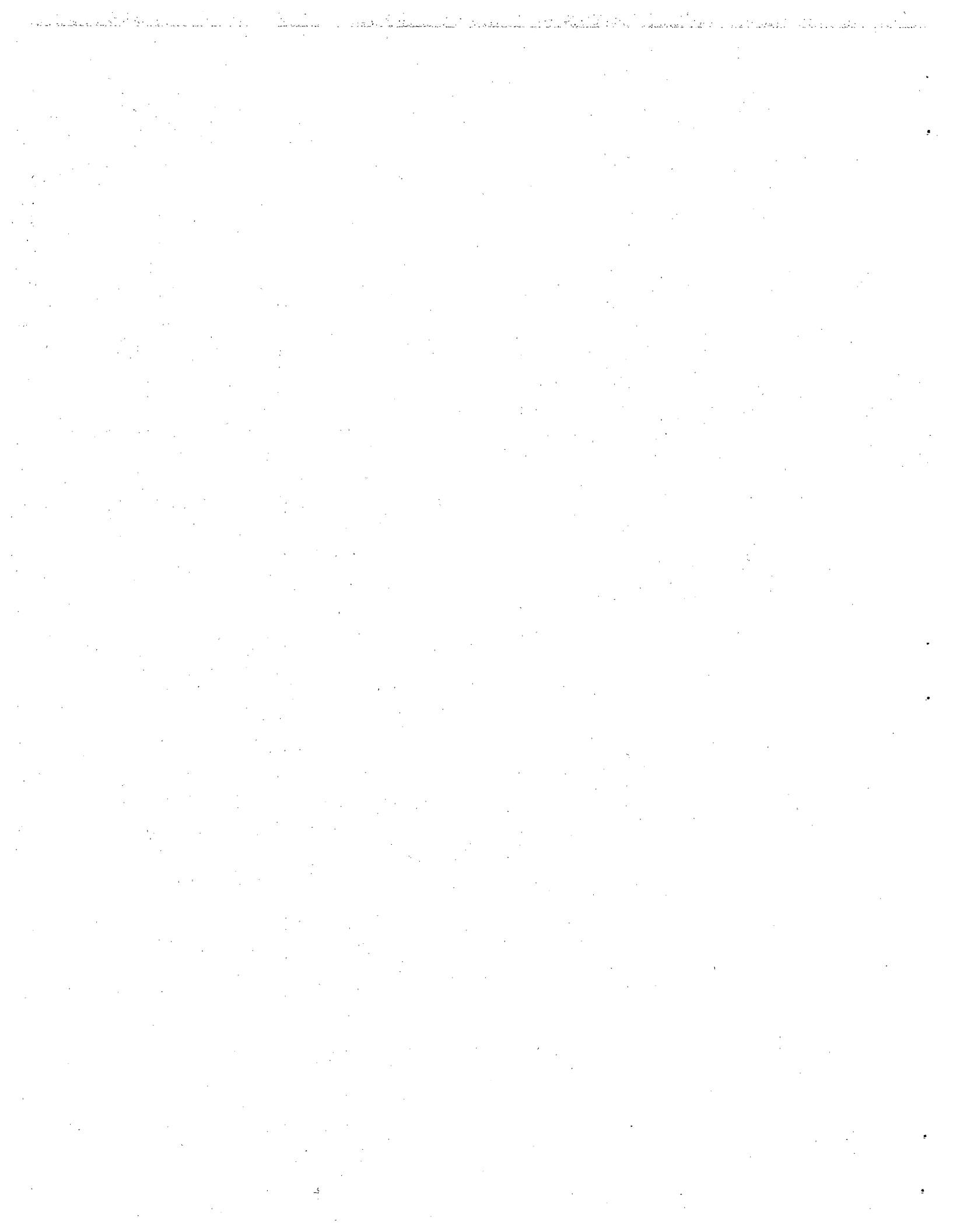
15

FORTY-TWO PERCENT OF THE OFFENDERS AT AVENEL ADULT DIAGNOSTIC AND TREATMENT CENTER ARE SERVING SENTENCES OF 20 YEARS OR MORE.

ONE THIRD OF ALL FEMALE OFFENDERS AT CLINTON ARE SERVING SENTENCES GREATER THAN 10 YEARS, OF WHICH 15 OR 5% ARE SERVING LIFE SENTENCES.

THE MAJORITY OF OFFENDERS AT TRAINING SCHOOLS ARE SERVING SENTENCES OF THREE YEARS OR LESS.

PLEASE NOTE: THE JAMESBURG TRAINING SCHOOL FOR BOYS WAS UTILIZING THIRTEEN PARA-PROFESSIONALS AS OF JUNE 8, 1983.



OFFENDERS IN CORRECTIONAL INSTITUTIONS ON JUNE 8, 1983 BY ETHNIC IDENTIFICATION

IN THESE TABULATIONS, BOTH BLACK AND WHITE INMATES WITH HISPANIC SURNAMES HAVE BEEN CATEGORIZED AS HISPANIC.

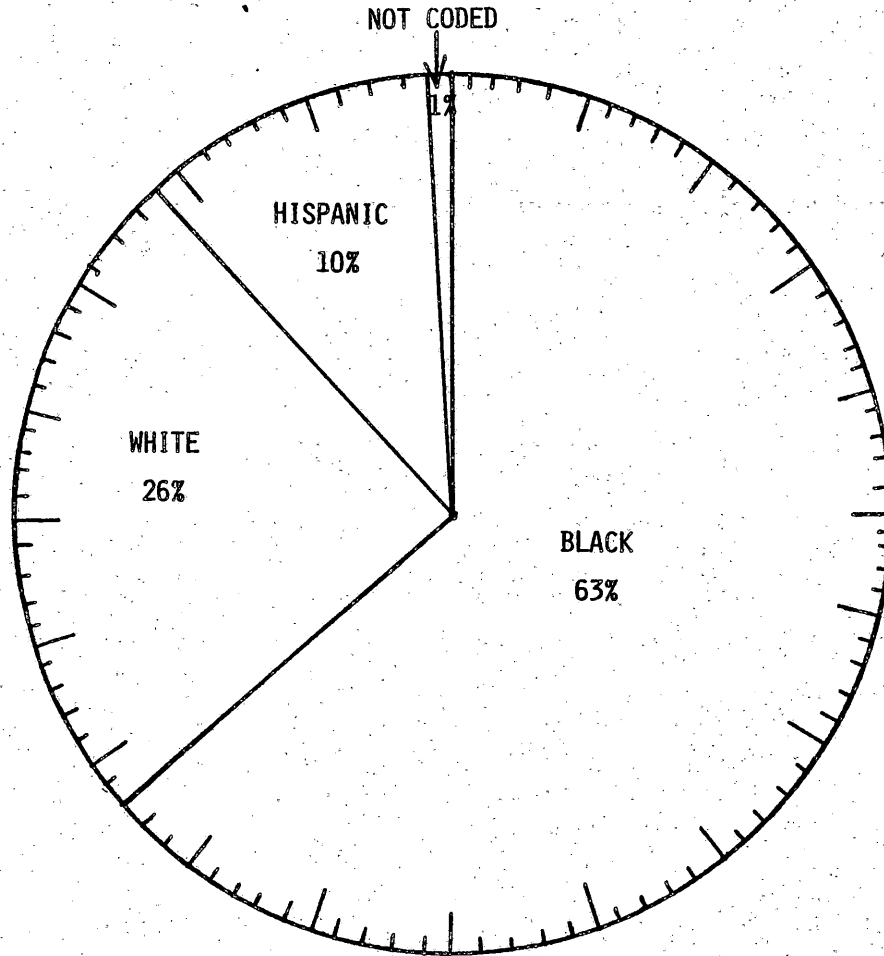
OFFENDERS IN CORRECTIONAL INSTITUTIONS ON JUNE 8, 1983 BY ETHNIC IDENTIFICATION						
ETHNIC IDENTIFICATION	TOTAL	PRISON COMPLEX	YOUTH COMPLEX	ADTC AVENEL	CLINTON WOMEN	TRAINING SCHOOLS
TOTAL OFFENDERS (NUMBER)	8930	4998	2768	258	321	585
WHITE	2470	1307	754	170	96	143
BLACK	5301	3155	1518	81	218	329
HISPANIC	992	485	423	6	4	74
OTHER	13	10	2	0	0	1
NOT CODED	154	41	71	1	3	38
TOTAL OFFENDERS (PERCENT)	100%	100%	100%	100%	100%	100%
WHITE	28	26	27	66	30	24
BLACK	59	63	55	31	68	56
HISPANIC	11	10	15	2	1	13
OTHER	-	-	-	0	0	-
NOT CODED	2	1	3	1	1	7

ON JUNE 8, 1983 59% OF ALL STATE CORRECTIONAL INSTITUTION OFFENDERS WERE BLACK, 28% WERE WHITE AND 11% WERE HISPANIC.

## AMONG CORRECTION COMPLEXES:

- THE LARGEST PROPORTIONS OF BLACKS WERE IN THE PRISON COMPLEX (63%), AND THE WOMEN'S CORRECTIONAL INSTITUTION AT CLINTON (68%).
- THE LARGEST PROPORTION OF WHITES WAS AT THE AVENEL ADULT DIAGNOSTIC AND TREATMENT CENTER (66%).
- THE LARGEST PROPORTIONS OF HISPANICS WERE IN THE YOUTH COMPLEX AND IN THE TRAINING SCHOOLS (15% AND 13% RESPECTIVELY).

PRISON COMPLEX OFFENDERS  
ON JUNE 8, 1983 BY  
ETHNIC IDENTIFICATION



PRISON COMPLEX OFFENDERS ON JUNE 8, 1983 BY ETHNIC IDENTIFICATION

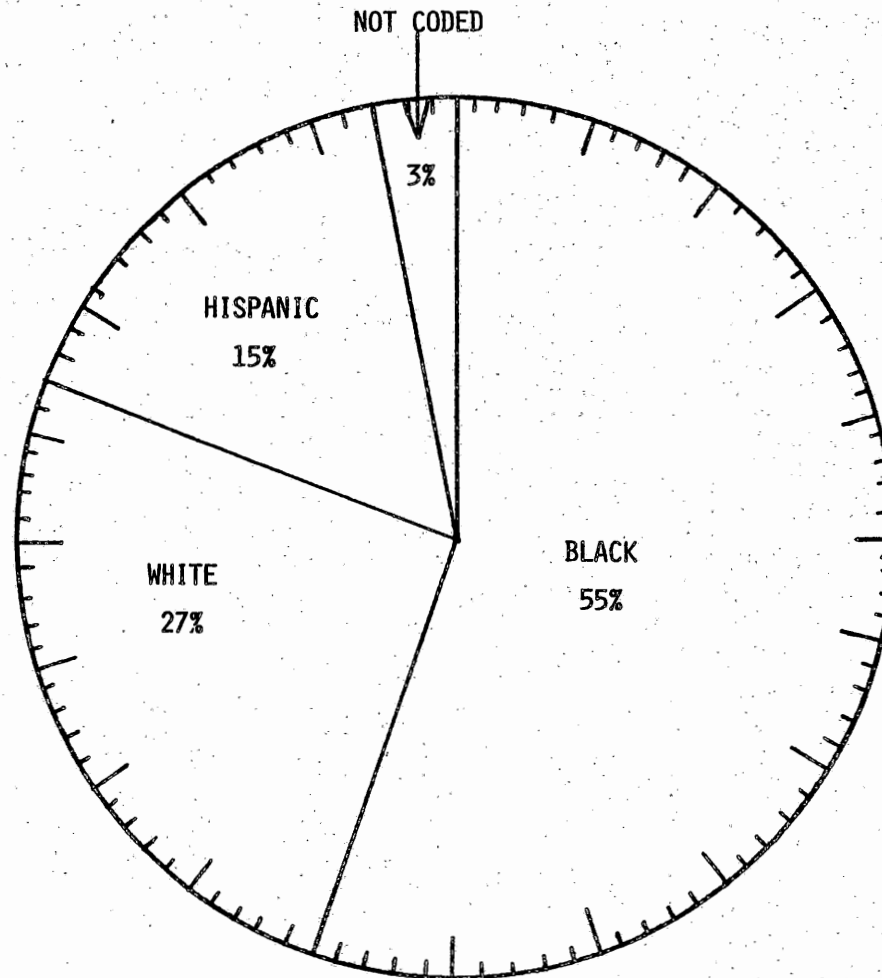
INSTITUTION	TOTAL OFFENDERS	WHITE	BLACK	HISPANIC	OTHER	NOT CODED
TRENTON MAIN	1,427 100.00%	367 25.71%	912 63.91%	132 9.25%	4 .28%	12 .84%
VROOM READJUST	130 100.00%	36 27.69%	77 59.23%	12 9.23%	3 2.30%	2 1.53%
JONES FARM	111 100.00%	37 33.33%	61 54.95%	11 9.90%	.00%	2 1.80%
TRENTON AND SATELLITES	1,668 100.00%	440 26.37%	1,050 62.94%	155 9.29%	7 .41%	16 .95%
RAHWAY MAIN	1,230 100.00%	251 20.40%	867 70.48%	105 8.53%	.00%	7 .56%
RAHWAY CAMP	114 100.00%	20 17.54%	87 76.31%	7 6.14%	.00%	.00%
MARLBORO CAMP	116 100.00%	24 20.68%	85 73.27%	7 6.03%	.00%	.00%
RAHWAY AND SATELLITES	1,460 100.00%	295 20.20%	1,039 71.16%	119 8.15%	.00%	7 .47%
LEESBURG MAIN	728 100.00%	237 32.55%	400 54.94%	82 11.26%	1 .13%	8 1.09%
LEESBURG FARM	414 100.00%	112 27.05%	256 61.83%	41 9.90%	.00%	5 1.20%
ANCORA UNIT	104 100.00%	33 31.73%	56 53.84%	15 14.42%	.00%	.00%
LEESBURG AND SATELLITES	1,246 100.00%	382 30.65%	712 57.14%	138 11.07%	1 .08%	13 1.04%
CLINTON-MEN	29 100.00%	17 58.62%	10 34.48%	2 6.89%	.00%	.00%
MID STATE FAC	486 100.00%	146 30.04%	272 55.96%	61 12.55%	2 .41%	5 1.02%
COUNTY TRANSFERS	109 100.00%	27 24.77%	72 66.05%	10 9.17%	.00%	.00%
PRISON COMPLEX TOTALS	4,998 100.00%	1,307 26.15%	3,155 63.12%	485 9.70%	10 .20%	41 .82%

THE LARGEST PROPORTIONS OF BLACKS WERE AT RAHWAY CAMP (76%), MARLBORO CAMP (73%), RAHWAY STATE PRISON (70%), AND TRENTON STATE PRISON (64%).

THE LARGEST PROPORTIONS OF WHITES WERE AT THE CLINTON MEN'S UNIT (58%), JONES FARM (33%), AND LEESBURG STATE PRISON (33%).

THE LARGEST PROPORTIONS OF HISPANICS WERE AT ANCORA (14%), AND LEESBURG STATE PRISON (11%).

YOUTH CORRECTIONAL OFFENDERS  
ON JUNE 8, 1983 BY  
ETHNIC IDENTIFICATION



YOUTH CORRECTIONAL OFFENDERS ON JUNE 8, 1983 BY ETHNIC IDENTIFICATION

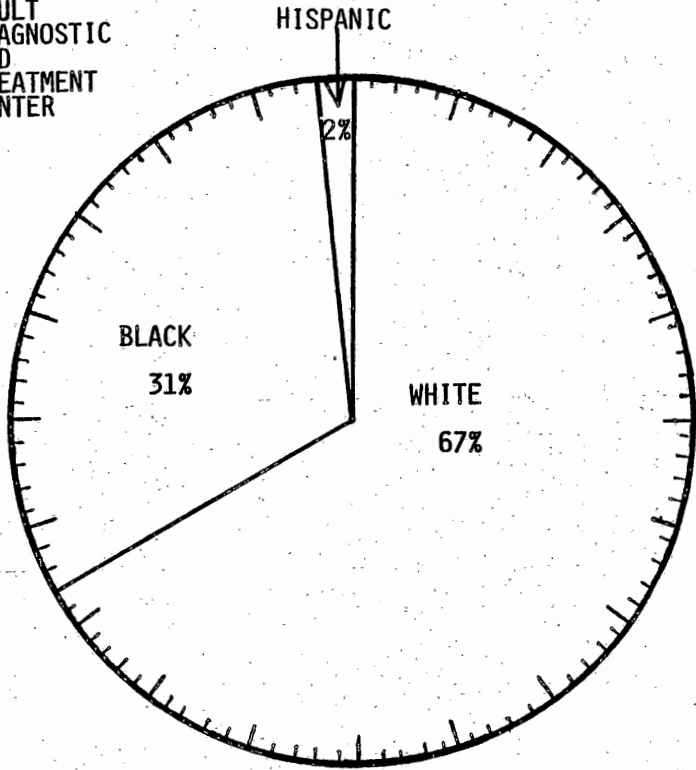
INSTITUTION	TOTAL OFFENDERS	WHITE	BLACK	HISPANIC	OTHER	NOT CODED
CORRECTION-YRD	799 100.00%	256 32.04%	397 49.68%	135 16.89%	.00%	11 1.37%
WHARTON TRACT	59 100.00%	25 42.37%	27 45.76%	5 8.47%	.00%	2 3.38%
YARDVILLE AND SATELLITES	858 100.00%	281 32.75%	424 49.41%	140 16.31%	.00%	13 1.51%
BORDENTOWN YTH	763 100.00%	160 20.96%	488 63.95%	106 13.89%	2 .26%	7 .91%
NPI UNIT	50 100.00%	13 26.00%	30 60.00%	6 12.00%	.00%	1 2.00%
NEW LISBON	69 100.00%	18 26.08%	37 53.62%	12 17.39%	.00%	2 2.89%
BORDENTOWN AND SATELLITES	882 100.00%	191 21.65%	555 62.92%	124 14.05%	2 .22%	10 1.13%
ANNANDALE YTH	892 100.00%	249 27.91%	491 55.04%	143 16.03%	.00%	9 1.00%
STOKES UNIT	70 100.00%	10 14.28%	16 22.85%	6 8.57%	.00%	38 54.28%
HIGH POINT	61 100.00%	21 34.42%	30 49.18%	9 14.75%	.00%	1 1.63%
ANNANDALE AND SATELLITES	1,023 100.00%	280 27.37%	537 52.49%	158 15.44%	.00%	48 4.69%
COUNTY TRANSFERS	5 100.00%	2 40.00%	2 40.00%	1 20.00%	.00%	.00%
YOUTH COMPLEX TOTALS	2,768 100.00%	754 27.23%	1,518 54.84%	423 15.28%	2 .07%	71 2.56%

THE LARGEST PROPORTIONS OF BLACKS WERE AT THE BORDENTOWN YOUTH CORRECTIONAL INSTITUTION (64%), NPI UNIT (60%), AND ANNANDALE YOUTH CORRECTIONAL INSTITUTION (55%).

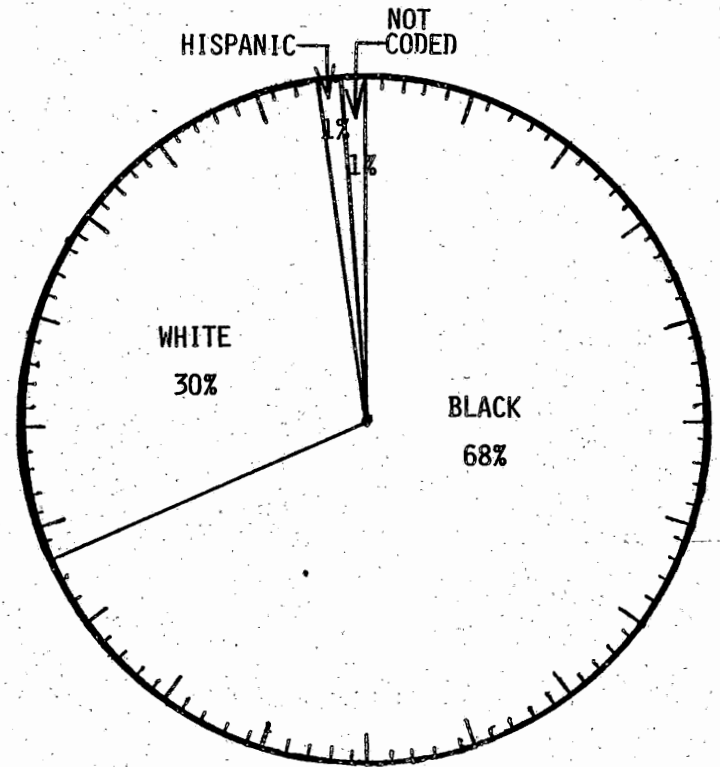
THE LARGEST PROPORTIONS OF WHITES WERE AT WHARTON TRACT (42%), HIGH POINT (34%), AND YARDVILLE CORRECTIONAL INSTITUTION (32%).

THE LARGEST PROPORTIONS OF HISPANICS WERE AT NEW LISBON (17%), YARDVILLE CORRECTIONAL INSTITUTION (17%), AND ANNANDALE YOUTH CORRECTIONAL INSTITUTION (16%).

ADULT  
DIAGNOSTIC  
AND  
TREATMENT  
CENTER

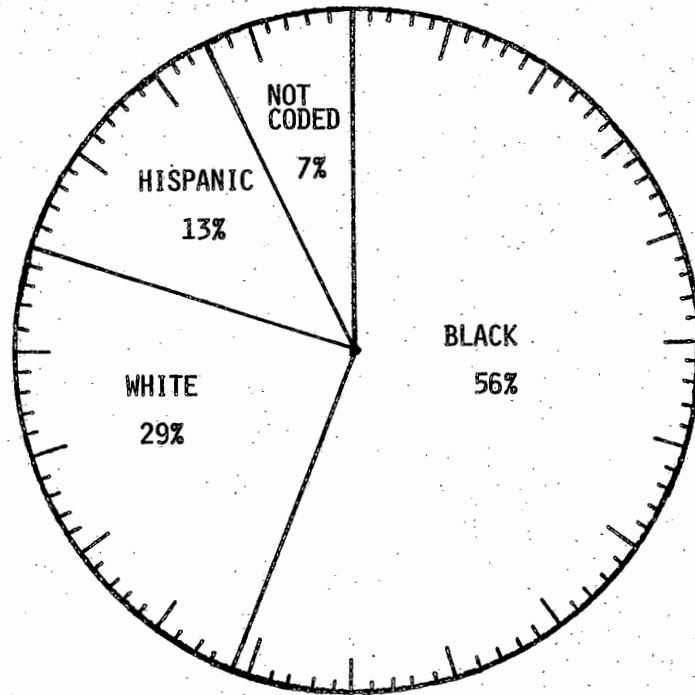


CLINTON  
CORRECTIONAL  
WOMEN



TRAINING SCHOOLS

JAMESBURG BOYS  
SKILLMAN GIRLS  
SKILLMAN BOYS



OFFENDERS IN INSTITUTIONS FOR WOMEN, BOYS, GIRLS, AND SEX OFFENDERS  
ON JUNE 8, 1983 BY ETHNIC IDENTIFICATION

INSTITUTION	TOTAL OFFENDERS	WHITE	BLACK	HISPANIC	OTHER	NOT CODED
ADTC	258 100.00%	170 65.89%	81 31.39%	6 2.32%	.00%	1 .38%
CLINTON-WOMEN	321 100.00%	96 29.90%	218 67.91%	4 1.24%	.00%	3 .93%
JAMESBURG BOYS	400 100.00%	101 25.25%	223 55.75%	47 11.75%	1 .25%	28 7.00%
SKILLMAN GIRLS	15 100.00%	6 40.00%	5 33.33%	1 6.66%	.00%	3 20.00%
SKILLMAN BOYS	170 100.00%	36 21.17%	101 59.41%	26 15.29%	.00%	7 4.11%
OTHER INSTITUTIONS TOTALS	1,164 100.00%	409 35.13%	628 53.95%	84 7.21%	1 .08%	42 3.60%

THE LARGEST PROPORTION OF BLACKS WAS AT CLINTON WOMEN'S UNIT (68%).

THE LARGEST PROPORTION OF WHITES WAS AT THE AVENEL ADULT DIAGNOSTIC AND TREATMENT CENTER (66%).

THE LARGEST PROPORTION OF HISPANICS WAS AT THE SKILLMAN BOYS UNIT (15%).



OFFENDERS IN NEW JERSEY CORRECTIONAL INSTITUTIONS ON JUNE 8, 1983 BY AGE GROUPS

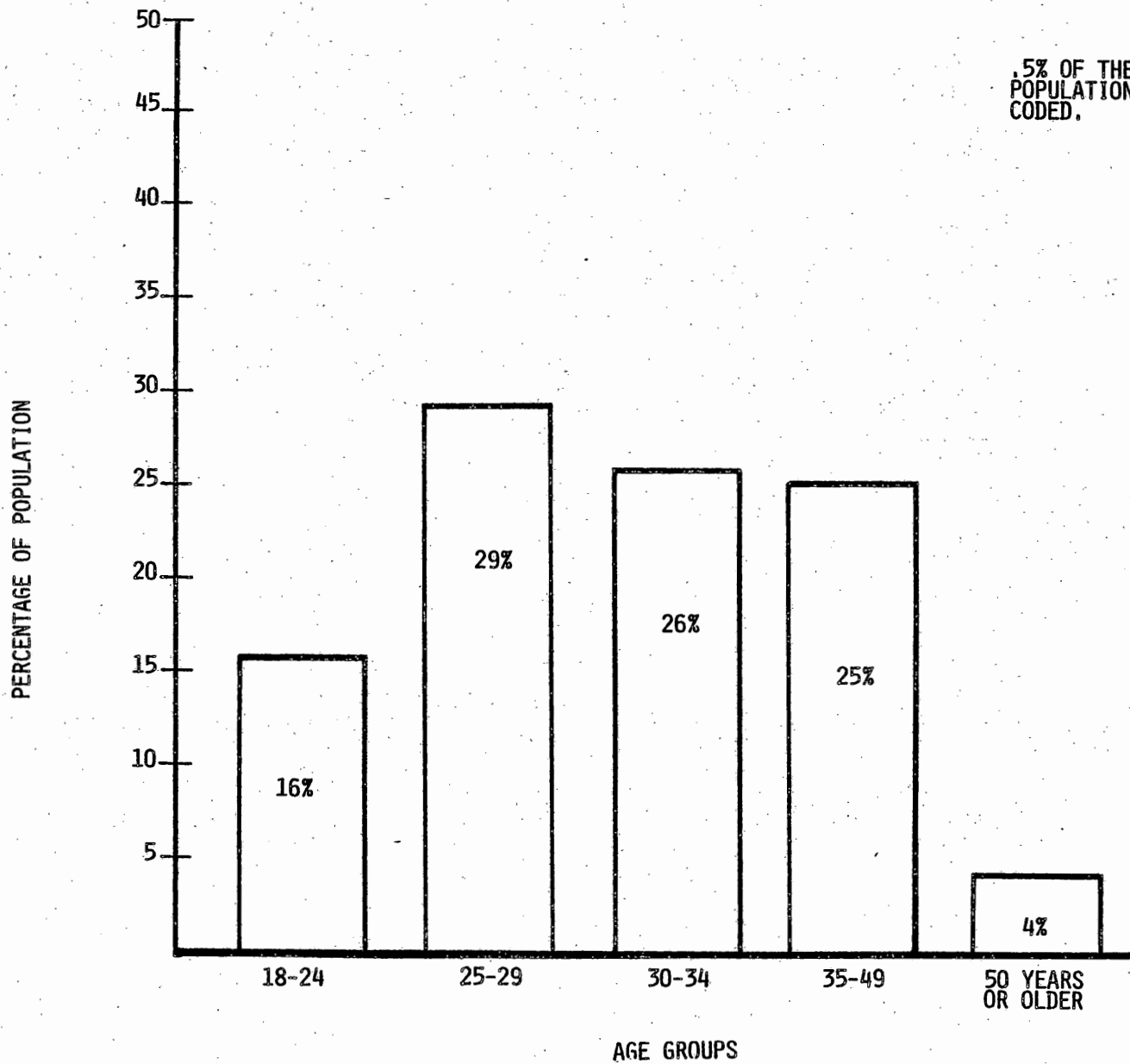
THE AGE OF THE OFFENDER IS THE OFFENDER'S CHRONOLOGICAL AGE AS OF JUNE 30, 1983.

OFFENDERS IN CORRECTIONAL INSTITUTIONS ON JUNE 8, 1983 BY AGE GROUPS						
AGE GROUP	TOTAL	PRISON COMPLEX	YOUTH COMPLEX	ADTC AVENEL	CLINTON WOMEN	TRAINING SCHOOLS
TOTAL OFFENDERS	8930	4998	2768	258	321	585
15 YRS OR YOUNGER	182	0	10	0	0	172
16 - 20 YRS	1248	116	736	4	15	377
21 - 29 YRS	4199	2143	1800	87	160	9
30 - 39 YRS	2372	1978	171	101	118	4
40 - 59 YRS	782	693	8	56	25	0
60 YRS OR OLDER	55	43	0	10	2	0
NOT CODED	92	25	43	0	1	23
PERCENT OF OFFENDERS	100%	100%	100%	100%	100%	100%
15 YRS OR YOUNGER	2	0	-	0	0	29
16 - 20 YRS	14	2	27	2	5	64
21 - 29 YRS	47	43	65	33	50	2
30 - 39 YRS	27	40	6	39	37	1
40 - 59 YRS	9	14	-	22	8	0
60 YRS OR OLDER	-	1	0	4	-	0
NOT CODED	1	-	2	0	-	4

SIXTEEN PERCENT OF ALL OFFENDERS IN THE DEPARTMENT OF CORRECTIONS ARE YOUNGER THAN 21 YEARS OF AGE.

EIGHTY-FOUR PERCENT OF ALL OFFENDERS ARE 21 YEARS OF AGE OR OLDER (WITH ALMOST ONE HALF (47%) BETWEEN THE AGES OF 21 AND 29 YEARS AND 37% OLDER THAN 30 YEARS).

PRISON COMPLEX OFFENDERS  
ON JUNE 8, 1983  
BY AGE GROUP



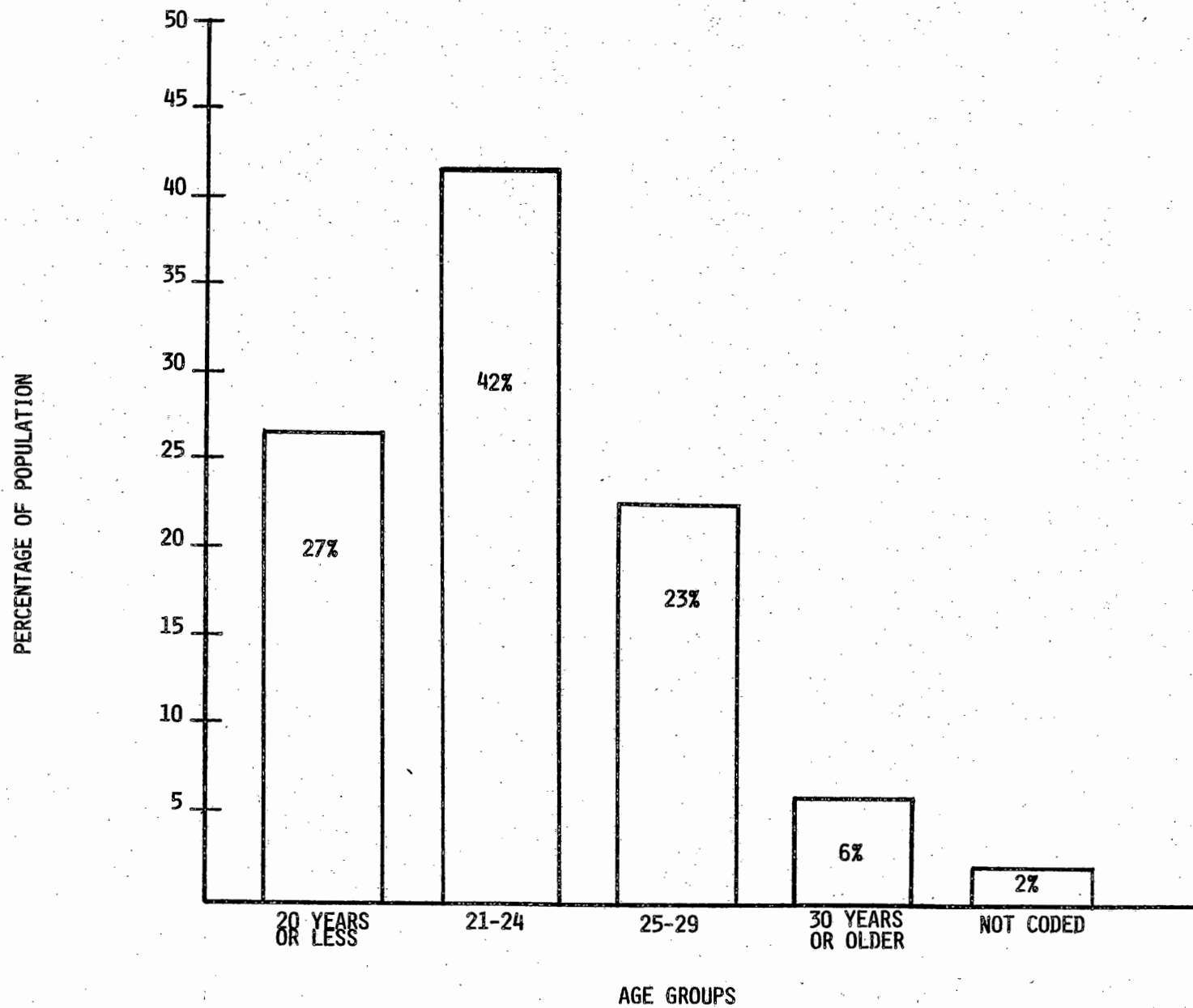
.5% OF THE PRISON  
POPULATION WAS NOT  
CODED.

PRISON COMPLEX OFFENDERS ON JUNE 8, 1983 BY AGE GROUPS

INSTITUTION	TOTAL INMATES	8-12	13-15	16	17	18-20	AGE 21-24	GROUP 25-29	30-34	35-39	40-49	50-59	60+	NOT CCDED
TRENTON MAIN	1,427 100.00%	.00%	.00%	.00%	.00%	60 4.20%	258 18.07%	421 29.50%	336 23.54%	170 11.91%	129 9.03%	36 2.52%	11 .77%	6 .42%
VROOM READJUST	130 100.00%	.00%	.00%	.00%	.00%	3 2.30%	28 21.53%	39 30.00%	30 23.07%	13 10.00%	12 9.23%	3 2.30%	.00%	2 1.53%
JONES FARM	111 100.00%	.00%	.00%	.00%	.00%	.00%	5 4.50%	26 23.42%	31 27.92%	22 19.81%	17 15.31%	8 7.20%	1 .90%	1 .90%
TRENTON AND SATELLITES	1,668 100.00%	.00%	.00%	.00%	.00%	63 3.77%	291 17.44%	486 29.13%	397 23.80%	205 12.29%	158 9.47%	47 2.81%	12 .71%	9 .53%
RAHWAY MAIN	1,230 100.00%	.00%	.00%	.00%	1 .08%	36 2.92%	197 16.01%	362 29.43%	312 25.36%	151 12.27%	138 11.21%	25 2.03%	2 .16%	6 .48%
RAHWAY CAMP	114 100.00%	.00%	.00%	.00%	.00%	.00%	3 2.63%	23 20.17%	37 32.45%	30 26.31%	17 14.91%	2 1.75%	2 1.75%	.00%
MARLBORO CAMP	116 100.00%	.00%	.00%	.00%	.00%	.00%	5 4.31%	41 35.34%	32 27.58%	16 13.79%	21 18.10%	.00%	1 .86%	.00%
RAHWAY AND SATELLITES	1,460 100.00%	.00%	.00%	.00%	1 .06%	36 2.46%	205 14.04%	426 29.17%	381 26.09%	197 13.49%	176 12.05%	27 1.84%	5 .34%	6 .41%
LEESBURG MAIN	728 100.00%	.00%	.00%	.00%	.00%	8 1.09%	87 11.95%	213 29.25%	195 26.78%	101 13.87%	89 12.22%	22 3.02%	8 1.09%	5 .68%
LEESBURG FARM	414 100.00%	.00%	.00%	.00%	.00%	.00%	29 7.00%	105 25.36%	131 31.64%	79 19.08%	49 11.83%	17 4.10%	4 .96%	.00%
ANCORA UNIT	104 100.00%	.00%	.00%	.00%	.00%	.00%	8 7.69%	19 18.26%	37 35.57%	21 20.19%	13 12.50%	6 5.76%	.00%	.00%
LEESBURG AND SATELLITES	1,246 100.00%	.00%	.00%	.00%	.00%	8 .64%	124 9.95%	337 27.04%	363 29.13%	201 16.13%	151 12.11%	45 3.61%	12 .96%	5 .40%
CLINTON-MEN	29 100.00%	.00%	.00%	.00%	.00%	.00%	1 3.44%	.00%	.00%	.00%	3 10.34%	13 44.82%	11 37.93%	1 3.44%
MID STATE FAC	486 100.00%	.00%	.00%	.00%	.00%	7 1.44%	66 13.58%	165 33.95%	103 21.19%	79 16.25%	49 10.08%	11 2.26%	2 .41%	4 .82%
COUNTY TRANSFERS	109 100.00%	.00%	.00%	.00%	.00%	1 .91%	7 6.42%	35 32.11%	38 34.86%	14 12.84%	12 11.00%	1 .91%	1 .91%	.00%
PRISON COMPLEX TOTALS	4,998 100.00%	.00%	.00%	.00%	1 .02%	115 2.30%	694 13.88%	1,445 28.99%	1,282 25.65%	696 13.92%	549 10.98%	144 2.88%	43 .86%	25 .50%

SIXTY-NINE PERCENT OF PRISON COMPLEX OFFENDERS ARE AGED 25-39. THIS FIGURE IS VERY SIMILAR FOR THE VARIOUS UNITS IN THE COMPLEX. EXCEPTIONS INCLUDE CLINTON MEN'S UNIT WHERE THE MAJORITY OF OFFENDERS ARE OVER 50 YEARS OF AGE AND VROOM READJUSTMENT UNIT WITH 54% AGED 29 OR YOUNGER.

YOUTH CORRECTIONAL COMPLEX OFFENDERS  
ON JUNE 8, 1983 BY AGE GROUPS  
(INCLUDING 1021 OFFENDERS SERVING  
DETERMINATE SENTENCES)

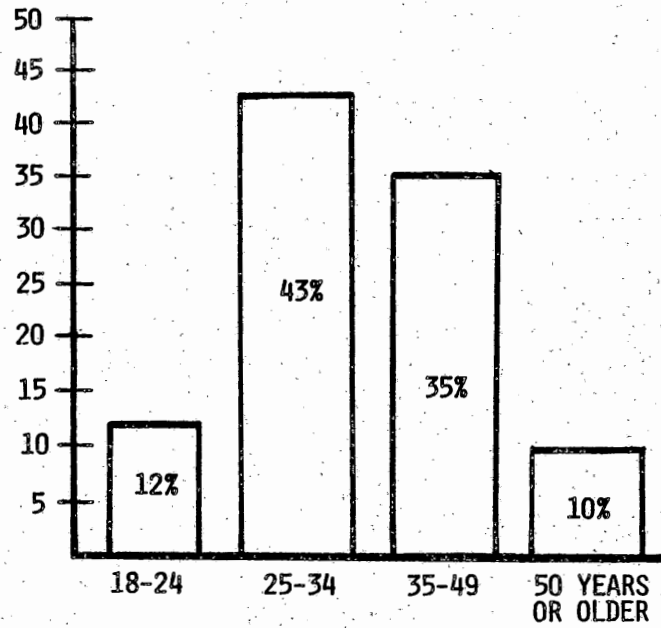


YOUTH CORRECTIONAL OFFENDERS ON JUNE 8, 1983 BY AGE GROUPS

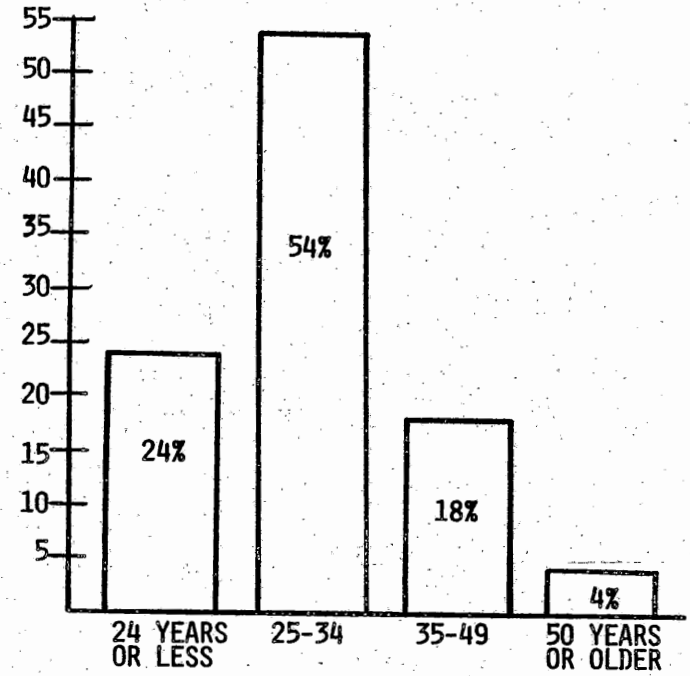
INSTITUTION	TOTAL INMATES	AGE GROUP												NOT CODED
		8-12	13-15	16	17	18-20	21-24	25-29	30-34	35-39	40-49	50-59	60+	
CORRECTION-YRD	799 100.00%	.00%	8 1.00%	16 2.00%	44 5.50%	264 33.04%	326 40.80%	117 14.64%	18 2.25%	1 .12%	.00%	.00%	5 .62%	
WHARTON TRACT	59 100.00%	.00%	1 1.69%	.00%	.00%	20 33.89%	29 49.15%	6 10.16%	1 1.69%	.00%	.00%	.00%	2 3.38%	
YARDVILLE AND SATELLITES	858 100.00%	.00%	9 1.04%	16 1.86%	44 5.12%	284 33.10%	355 41.37%	123 14.33%	19 2.21%	1 .11%	.00%	.00%	7 .81%	
BORDENTOWN YTH	763 100.00%	.00%	.00%	.00%	4 .52%	119 15.59%	331 43.38%	237 31.06%	62 8.12%	7 .91%	1 .13%	.00%	2 .26%	
NPI UNIT	50 100.00%	.00%	.00%	.00%	.00%	4 8.00%	21 42.00%	18 36.00%	5 10.00%	1 2.00%	1 2.00%	.00%	.00%	
NEW LISBON	69 100.00%	.00%	.00%	.00%	.00%	8 11.59%	47 68.11%	14 20.28%	.00%	.00%	.00%	.00%	.00%	
BORDENTOWN AND SATELLITES	882 100.00%	.00%	.00%	.00%	4 .45%	131 14.85%	399 45.23%	269 30.49%	67 7.59%	8 .90%	2 .22%	.00%	2 .22%	
ANNANDALE YTH	892 100.00%	.00%	.00%	1 .11%	1 .11%	211 23.65%	382 42.82%	225 25.22%	61 6.83%	5 .56%	3 .33%	.00%	3 .33%	
STOKES UNIT	70 100.00%	.00%	1 1.42%	1 1.42%	13 18.57%	17 24.28%	2 2.85%	2 2.85%	2 2.85%	.00%	1 1.42%	.00%	31 44.28%	
HIGH POINT	61 100.00%	.00%	.00%	.00%	.00%	13 21.31%	20 32.78%	18 29.50%	8 13.11%	1 1.63%	1 1.63%	.00%	.00%	
ANNANDALE AND SATELLITES	1,023 100.00%	.00%	1 .09%	2 .19%	14 1.36%	241 23.55%	404 39.49%	245 23.94%	71 6.94%	6 .58%	5 .48%	.00%	34 3.32%	
COUNTY FACLTY	5 100.00%	.00%	.00%	.00%	.00%	.00%	1 20.00%	4 80.00%	.00%	.00%	.00%	.00%	.00%	
YOUTH COMPLEX TOTALS	2,768 100.00%	.00%	10 .36%	18 .65%	62 2.23%	656 23.69%	1,159 41.87%	641 23.15%	157 5.67%	14 .50%	8 .28%	.00%	43 1.55%	

SIXTY-NINE PERCENT OF OFFENDERS IN THE YOUTH CORRECTIONAL FACILITIES ARE UNDER 24 YEARS OF AGE.

**ADULT DIAGNOSTIC AND TREATMENT CENTER**

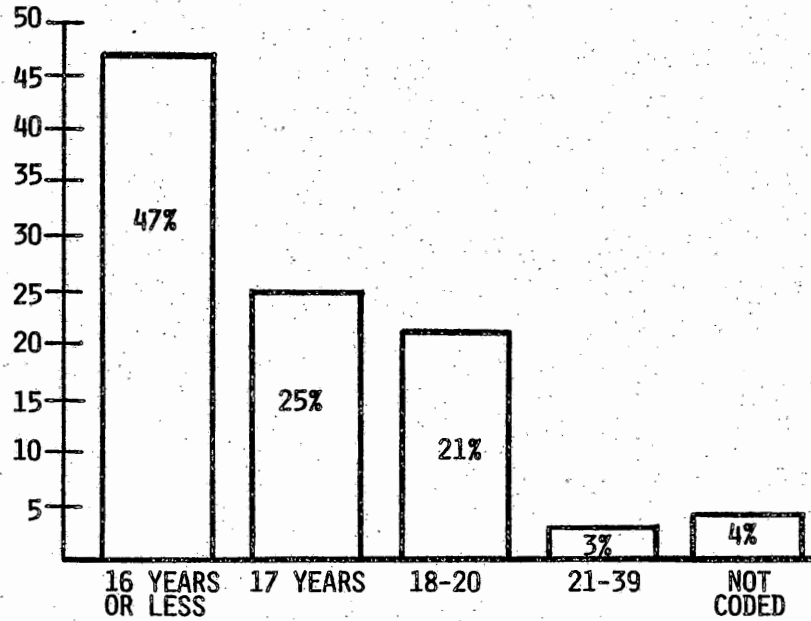


**CLINTON CORRECTIONAL INSTITUTION FOR WOMEN**



**TRAINING SCHOOLS**

JAMESBURG - MALES  
SKILLMAN - GIRLS  
SKILLMAN - BOYS



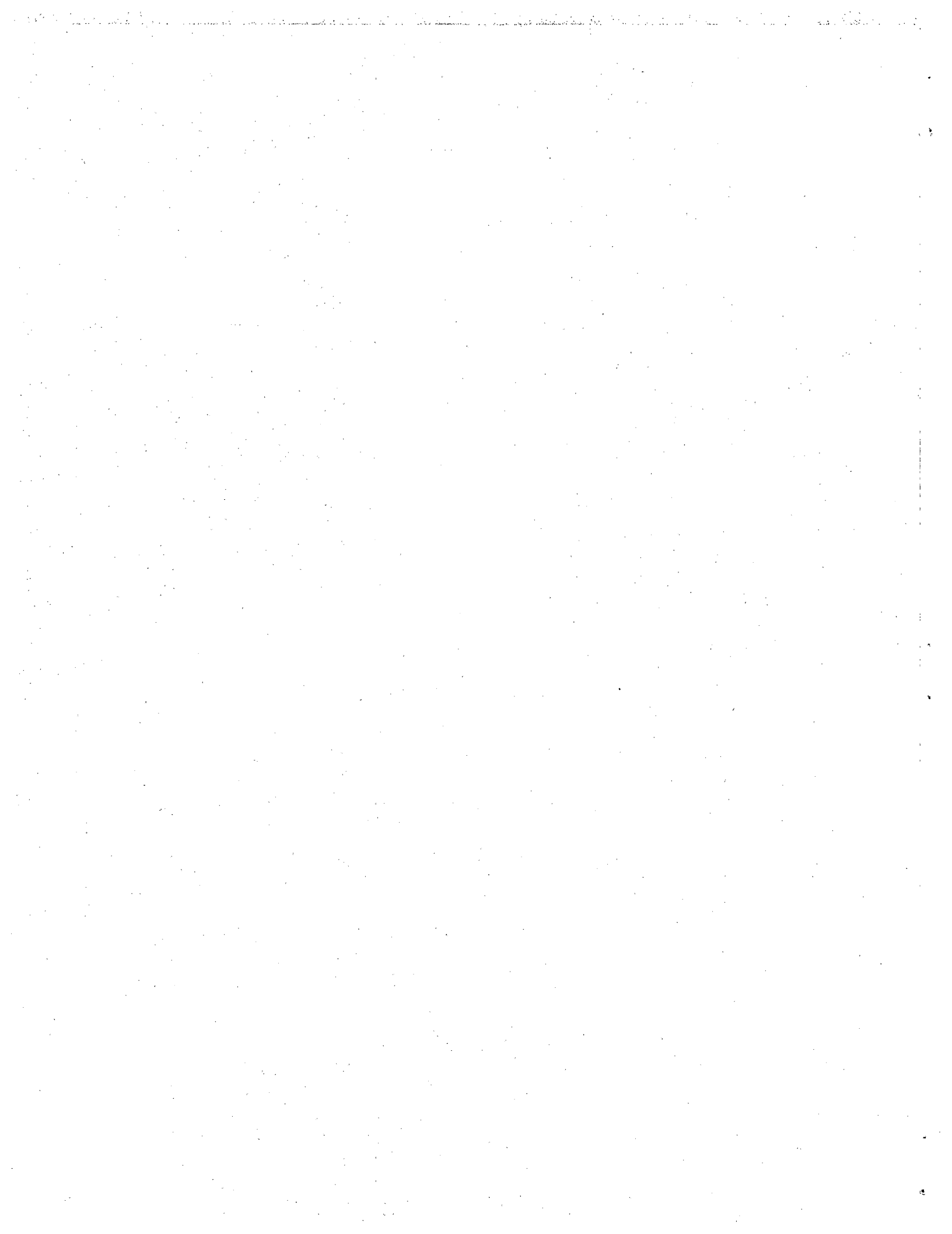
OFFENDERS IN INSTITUTIONS FOR WOMEN, BOYS, GIRLS, AND SEX OFFENDERS ON JUNE 8, 1983 BY AGE GROUPS

INSTITUTION	TOTAL INMATES	AGE GROUP												NOT CODED
		8-12	13-15	16	17	18-20	21-24	25-29	30-34	35-39	40-49	50-59	60+	
ADTC	258 100.00%	.00%	.00%	.00%	.00%	4 1.55%	28 10.85%	59 22.86%	50 19.37%	51 19.76%	39 15.11%	17 6.58%	10 3.87%	.00%
CLINTON-WOMEN	321 100.00%	.00%	.00%	.00%	1 .31%	14 4.36%	64 19.93%	96 29.90%	76 23.67%	42 13.08%	15 4.67%	10 3.11%	2 .62%	1 .31%
JAMESBURG BOYS	400 100.00%	2 .50%	32 8.00%	79 19.75%	139 34.75%	120 30.00%	6 1.50%	3 .75%	3 .75%	1 .25%	.00%	.00%	.00%	15 3.75%
SKILLMAN GIRLS	15 100.00%	.00%	4 26.66%	6 40.00%	3 20.00%	1 6.66%	.00%	.00%	.00%	.00%	.00%	.00%	.00%	1 6.66%
SKILLMAN BOYS	170 100.00%	13 7.64%	121 71.17%	22 12.94%	5 2.94%	2 1.17%	.00%	.00%	.00%	.00%	.00%	.00%	.00%	7 4.11%
OTHER INSTITUTIONS TOTALS	1,164 100.00%	15 1.28%	157 13.48%	107 9.19%	148 12.71%	141 12.11%	98 8.41%	158 13.57%	129 11.08%	94 8.07%	54 4.63%	27 2.31%	12 1.03%	24 2.06%

SIXTY-FIVE PERCENT OF AVENEL (ADTC) OFFENDERS ARE 30 YEARS OF AGE OR OLDER WITH 10% BEING 50 YEARS OR OLDER.

MORE THAN ONE HALF (54%) OF CLINTON WOMEN ARE AGED 25-34 WITH AN ADDITIONAL 69 OR 21% OLDER THAN 35 YEARS.

ALMOST 80% OF ALL SKILLMAN BOYS ARE 15 YEARS OF AGE OR LESS.

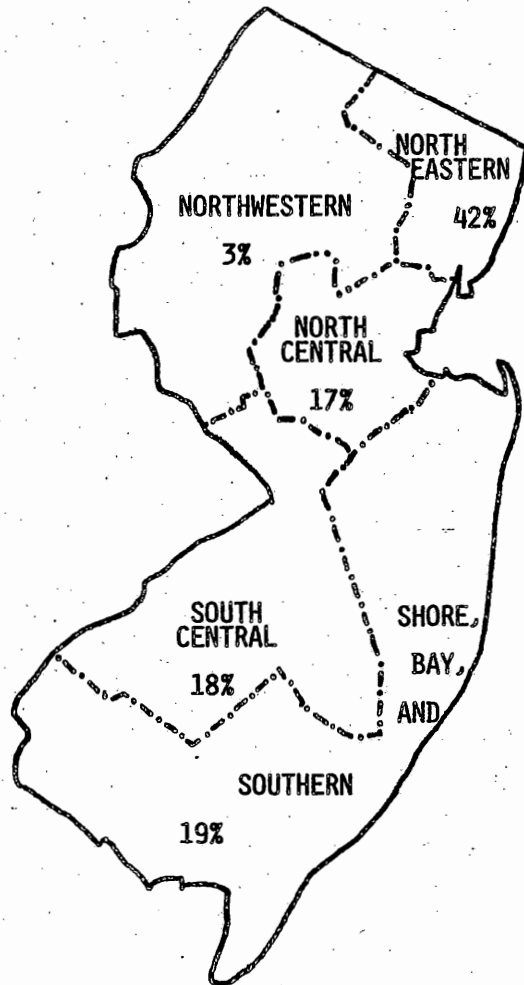


OFFENDERS IN NEW JERSEY CORRECTIONAL INSTITUTIONS ON JUNE 8, 1983 BY COUNTY OF COMMITMENT

OFFENDERS IN CORRECTIONAL INSTITUTIONS ON JUNE 8, 1983 BY COUNTY OF COMMITMENT						
COUNTY OF COMMITMENT	TOTAL	PRISON COMPLEX	YOUTH COMPLEX	ADTC AVENEL	CLINTON WOMEN	TRAINING SCHOOLS
TOTAL OFFENDERS	8930	4998	2768	258	321	585
ATLANTIC	462	246	150	9	19	38
BERGEN	337	195	94	17	16	15
BURLINGTON	193	104	54	15	3	17
CAMDEN	919	513	319	20	18	49
CAPE MAY	70	45	18	2	2	3
CUMBERLAND	251	142	73	10	9	17
ESSEX	1674	1102	408	28	54	82
GLOUSTER	92	55	30	4	0	3
HUDSON	622	365	215	6	17	19
HUNTERDON	36	20	12	0	2	2
MERCER	453	239	148	13	25	28
MIDDLESEX	500	264	157	24	20	35
MONMOUTH	786	396	276	33	42	39
MORRIS	147	85	34	15	7	6
OCEAN	159	79	47	13	3	17
PASSAIC	900	424	328	15	36	97
SALEM	72	44	17	0	1	10
SOMERSET	192	97	61	4	10	20
SUSSEX	49	20	17	6	2	4
UNION	821	474	260	18	32	37
WARREN	44	19	18	3	0	4
OUT OF STATE	8	6	1	1	0	0
NOT CODED	143	64	31	2	3	43
TOTAL OFFENDERS (%)	100%	100%	100%	100%	100%	100%
ATLANTIC	5	5	5	3	6	6
BERGEN	4	4	3	7	5	3
BURLINGTON	2	2	2	6	1	3
CAMDEN	10	10	12	8	6	8
CAPE MAY	1	2	1	1	1	1
CUMBERLAND	3	3	3	4	3	3
ESSEX	19	22	15	11	17	14
GLOUCESTER	1	2	1	2	0	1
HUDSON	7	7	8	2	5	3
HUNTERDON	-	-	-	0	1	-
MERCER	5	5	5	5	8	5
MIDDLESEX	6	5	6	9	6	6
MONMOUTH	9	8	10	12	13	6
MORRIS	2	2	1	6	2	1
OCEAN	2	2	2	5	1	3
PASSAIC	10	8	12	6	11	17
SALEM	1	1	-	0	-	2
SOMERSET	2	2	2	2	3	3
SUSSEX	-	-	1	2	-	1
UNION	9	9	9	7	10	6
WARREN	-	-	1	1	0	1
OUT OF STATE	-	-	-	-	0	0
NOT CODED	2	1	1	1	1	7

FORTY PERCENT OF ALL RESIDENTS IN THE STATE CORRECTIONAL SYSTEM ARE FROM THE FOUR NORTHEAST COUNTIES OF BERGEN, ESSEX, HUDSON, AND PASSAIC (WITH 1674 OFFENDERS REPRESENTING 19% FROM ESSEX COUNTY ALONE).

PRISON COMPLEX OFFENDERS ON JUNE 8, 1983 BY COUNTY OF COMMITMENT



THE COUNTIES HAVE BEEN DIVIDED INTO FIVE SECTIONS:

- NORTHWESTERN - HUNTERDON, MORRIS, SUSSEX, AND WARREN COUNTIES.
- NORTHEASTERN - BERGEN, ESSEX, HUDSON, AND PASSAIC COUNTIES.
- NORTH CENTRAL - MIDDLESEX, SOMERSET, AND UNION COUNTIES.
- SOUTH CENTRAL - BURLINGTON, CAMDEN, GLOUCESTER, AND MERCER COUNTIES.
- SHORE, BAY AND SOUTHERN - ATLANTIC, CAPE MAY, CUMBERLAND, MONMOUTH, OCEAN, AND SALEM COUNTIES.

ONE PERCENT OF THE PRISON POPULATION WAS NOT CODED.

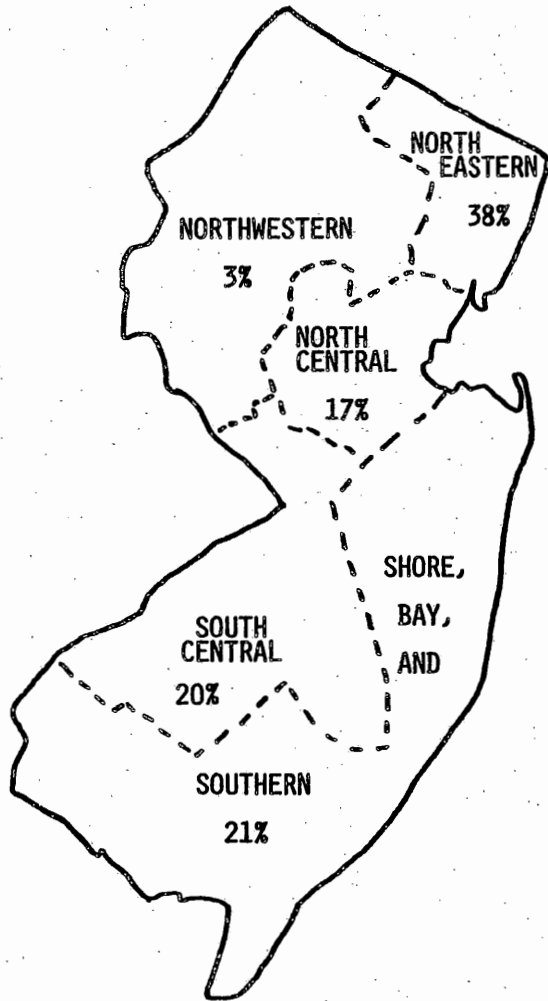
PRISON COMPLEX OFFENDERS ON JUNE 8, 1983 BY COUNTY OF COMMITMENT

INSTITUTION	TOT OFF	ATL	BER	BUR	CAM	CMY	CUM	ESX	GLC	HUD	HUN	MER	MID	MON	MOR	OCN	PAS	SAL	SOM	SUS	UNI	WAR	O/S	N/C
TRENTON MAIN	1,427 100%	67 4%	52 3%	37 2%	150 10%	15 1%	39 2%	320 22%	13	99 6%	4	74 5%	74 5%	133 9%	28 1%	22 1%	139 9%	16 1%	23 1%	5	97 6%	1		19 1%
VROOM READJUST	130 100%	6 4%	2 1%	6 4%	9 6%	3 2%	2 1%	34 26%	1	9 6%		11 8%	10 7%	11 8%	1	2 1%	7 5%	1	3 2%		8 6%			4 3%
JONES FARM	111 100%	4 3%	2 1%	1	15 13%		1	34 30%	1	4 3%		4 3%	4 3%	7 6%	1		6 5%		8 7%		16 14%	1		2 1%
TRENTON AND SATELLITES	1,668 100%	77 4%	56 3%	44 2%	174 10%	18 1%	42 2%	388 23%	15	112 6%	4	89 5%	88 5%	151 9%	30 1%	24 1%	152 9%	17 1%	34 2%	5	121 7%	2		25 1%
RAHWAY MAIN	1,230 100%	50 4%	54 4%	22 1%	97 7%	11	21 1%	315 25%	10	99 8%	5	52 4%	81 6%	87 7%	18 1%	16 1%	112 9%	12	21 1%	3	123 10%	5	3	13 1%
RAHWAY CAMP	114 100%	1	2 1%	3 2%	7 6%		1	31 27%		12 10%		3 2%	7 6%	8 7%	3 2%	1	12 10%		2 1%		20 17%		1	
MARLBORO CAMP	116 100%	1	6 5%	2 1%	1		1	32 27%		8 6%		2 1%	4 3%	13 11%	4 3%	2 1%	23 19%	1		1	14 12%			1
RAHWAY AND SATELLITES	1,460 100%	52 3%	62 4%	27 1%	105 7%	11	23 1%	378 25%	10	119 8%	5	57 3%	92 6%	108 7%	25 1%	19 1%	147 10%	13	23 1%	4	157 10%	5	4	14
LEESBURG MAIN	728 100%	44 6%	29 3%	15 2%	88 12%	8 1%	31 4%	154 21%	10	42 5%	4	34 4%	39 5%	47 6%	10 1%	17 2%	44 6%	7	16 2%	5	68 9%	5	1	10 1%
LEESBURG FARM	414 100%	26 6%	22 5%	6 1%	64 15%	4	22 5%	75 18%	12	34 8%	1	17 4%	9 2%	33 7%	5 1%	6 1%	28 6%	2	11 2%		30 7%	2		5 1%
ANCORA UNIT	104 100%	9 8%	2 1%	4 3%	12 11%		5 4%	13 12%	1	6 5%	2 1%	5 4%	3 2%	8 7%		2 1%	10 9%	1	2 1%		16 15%	2 1%		1
LEESBURG AND SATELLITES	1,246 100%	79 6%	53 4%	25 2%	164 13%	12	58 4%	242 19%	23	82 6%	7	56 4%	51 4%	88 7%	15 1%	25 2%	82 6%	10	29 2%	5	114 9%	9	1	16 1%
CLINTON-MEN	29 100%	1 3%			3 10%			8 27%		1 3%	1 3%	1 3%	2 6%	5 17%			2 6%	2			3 10%			
MID STATE FAC	486 100%	30 6%	23 4%	7 1%	50 10%	4	16 3%	67 13%	7	49 10%	2	29 5%	23 4%	33 6%	12 2%	8 1%	32 6%	4	8 1%	5 1%	67 13%	1	1	8 1%
COUNTY TRANSFERS	109 100%	7 6%	1	1	17 15%		3 2%	19 17%		2 1%	1	7 6%	8 7%	11 10%	3 2%	1	9 8%		3 2%	1	12 11%	2 1%		1
PRISON COMPLEX TOTALS	4,998 100%	246 4%	195 3%	104 2%	513 10%	45	142 2%	1,102 22%	55	365 7%	20	239 4%	264 5%	396 7%	85 1%	79 1%	424 8%	44	97 1%	20	474 9%	19	6	64 1%

ESSEX COUNTY IS THE HIGHEST CONTRIBUTOR OF OFFENDERS COMMITTED TO MAJOR INSTITUTIONS, WITH 22% IN TRENTON MAIN, 25% IN RAHWAY MAIN AND 21% IN LEESBURG MAIN BEING COMMITTED FROM THIS COUNTY.

THE COUNTIES OF CAMDEN, MONMOUTH, PASSAIC, AND UNION ACCOUNTED FOR AN ADDITIONAL 36% OR A TOTAL OF 1807 OFFENDERS IN THE PRISON COMPLEX.

YOUTH CORRECTIONAL OFFENDERS ON JUNE 8, 1983 BY COUNTY OF COMMITMENT



THE COUNTIES HAVE BEEN DIVIDED INTO FIVE SECTIONS:

- NORTHWESTERN - HUNTERDON, MORRIS, SUSSEX, AND WARREN COUNTIES.
- NORTHEASTERN - BERGEN, ESSEX, HUDSON, AND PASSAIC COUNTIES.
- NORTH CENTRAL - MIDDLESEX, SOMERSET, AND UNION COUNTIES.
- SOUTH CENTRAL - BURLINGTON, CAMDEN, GLOUCESTER, AND MERCER COUNTIES.
- SHORE, BAY, AND SOUTHERN - ATLANTIC, CAPE MAY, CUMBERLAND, MONMOUTH, OCEAN, AND SALEM COUNTIES.

ONE PERCENT OF THE YOUTH POPULATION WAS NOT CODED.

YOUTH CORRECTIONAL OFFENDERS ON JUNE 8, 1983 BY COUNTY OF COMMITMENT

INSTITUTION	TOT OFF	ATL	BER	BUR	CAM	CMY	CUM	ESX	GLC	HUD	HUN	MER	MID	MON	MOR	OCN	PAS	SAL	SOM	SUS	UNI	WAR	C/S	N/C	
CORRECTION-YRD	799 100%	49 6%	18 2%	17 2%	108 13%	8 1%	24 3%	149 18%	10 1%	60 7%	5	48 6%	34 4%	71 8%	7	13 1%	78 9%	5	14 1%	10 1%	55 6%	3		13 1%	
WHARTON TRACT	59 100%	12 20%		2 3%	11 18%	1 1%	4 6%	1 1%				11 18%	1 1%	14 23%				1 1%							1 1%
YARDVILLE AND SATELLITES	858 100%	61 7%	18 2%	19 2%	119 13%	9 1%	28 3%	150 17%	10 1%	60 6%	5	59 6%	35 4%	85 9%	7	13 1%	78 9%	6	14 1%	10 1%	55 6%	3		14 1%	
BORDENTOWN YTH	763 100%	28 3%	21 2%	17 2%	108 14%	6	22 2%	135 17%	12 1%	57 7%	2	48 6%	41 5%	53 6%	12 1%	13 1%	60 7%	8 1%	12 1%	5	95 12%	2	1	5	
NPI UNIT	50 100%	3 6%	1 2%	4 8%	4 8%		1 2%	9 18%	1 2%	4 8%		3 6%	3 6%	4 8%		2 4%	3 6%		1 2%		7 14%				
NEW LISBON	69 100%	8 11%		3 4%	7 10%	1 1%	6 8%	9 13%	1 1%	5 7%	1 1%		5 7%	9 13%	1 1%	2 2%	3 4%				7 10%				1 1%
BORDENTOWN AND SATELLITES	882 100%	39 4%	22 2%	24 2%	119 13%	7	29 3%	153 17%	14 1%	66 7%	3	51 5%	49 5%	66 7%	13 1%	17 1%	66 7%	8	13 1%	5	109 12%	2	1	6	
ANNANDALE YTH	892 100%	45 5%	45 5%	10 1%	72 8%	1	13 1%	87 9%	6	78 8%	4	36 4%	66 7%	113 12%	11 1%	15 1%	155 17%	2	29 3%	2	83 9%	11 1%		8	
STOKES UNIT	70 100%	4 5%	5 7%	1 1%	6 8%		1 1%	14 20%		5 7%		1 1%	3 4%	3 4%	3 4%	1 1%	10 14%	1 1%	2 2%		6 8%	1 1%			3 4%
HIGH POINT	61 100%	1 1%	4 6%		3 4%		2 3%	4 6%		6 9%		1 1%	3 4%	7 11%		1 1%	19 31%		3 4%		6 9%	1 1%			
ANNANDALE AND SATELLITES	1,023 100%	50 4%	54 5%	11 1%	81 7%	1	16 1%	105 10%	6	89 8%	4	38 3%	72 7%	123 12%	14 1%	17 1%	184 17%	3	34 3%	2	95 9%	13 1%		11 1%	
COUNTY TRANSFERS	5 100%						1 20%						1 20%	2 40%							1 20%				
YOUTH COMPLEX TOTALS	2,768 100%	150 5%	94 3%	54 1%	319 11%	18	73 2%	408 14%	30 1%	215 7%	12	148 5%	157 5%	276 9%	34 1%	47 1%	328 11%	17	61 2%	17	260 9%	18	1	31 1%	

OF THE 21 COUNTIES, ESSEX, PASSAIC, CAMDEN, MONMOUTH, AND UNION COUNTIES HAVE THE HIGHEST PERCENTAGE OF OFFENDERS COMMITTED TO THE YOUTH COMPLEX.

FOURTEEN PERCENT OR 408 OFFENDERS IN THE YOUTH COMPLEX WERE COMMITTED FROM ESSEX COUNTY.

ELEVEN PERCENT OR 328 OFFENDERS IN THE YOUTH COMPLEX WERE COMMITTED FROM PASSAIC COUNTY.

ELEVEN PERCENT OR 319 OFFENDERS IN THE YOUTH COMPLEX WERE COMMITTED FROM CAMDEN COUNTY.

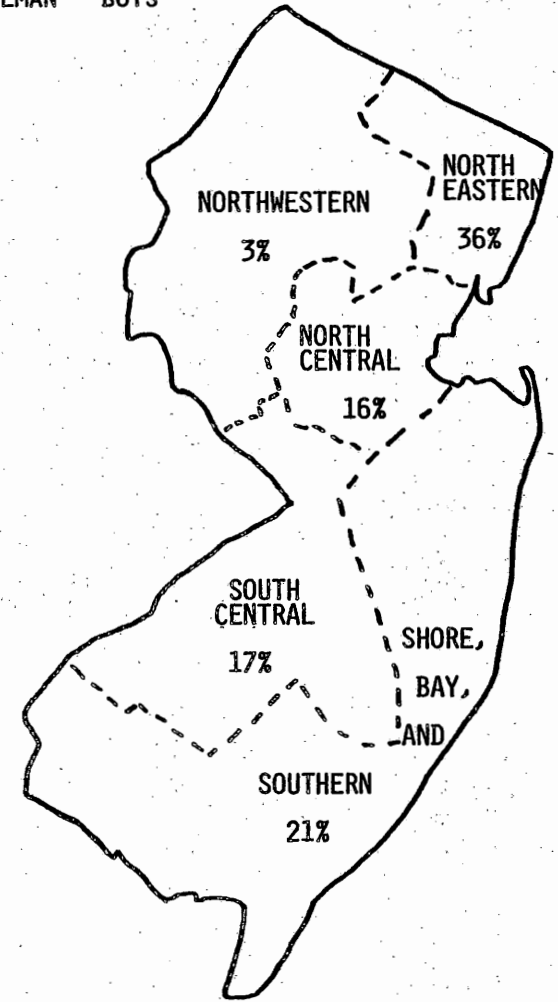
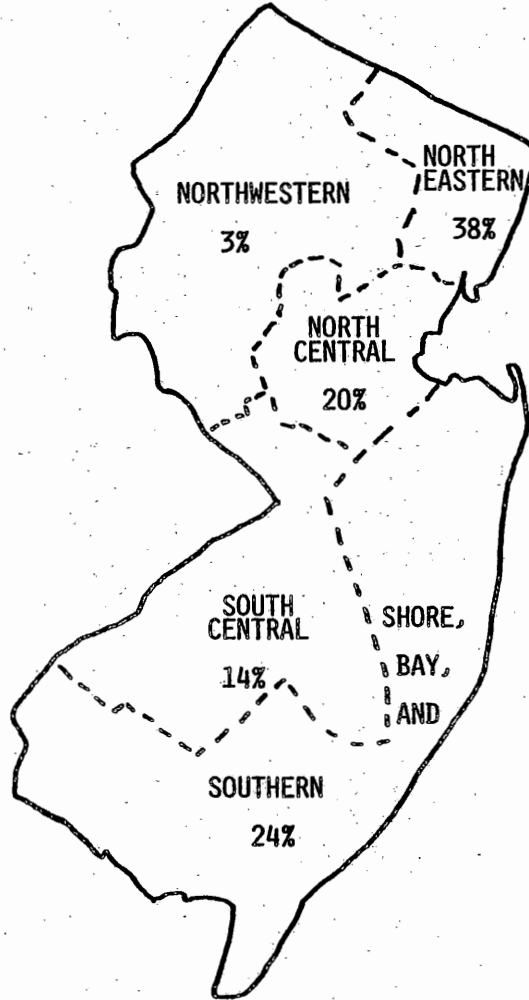
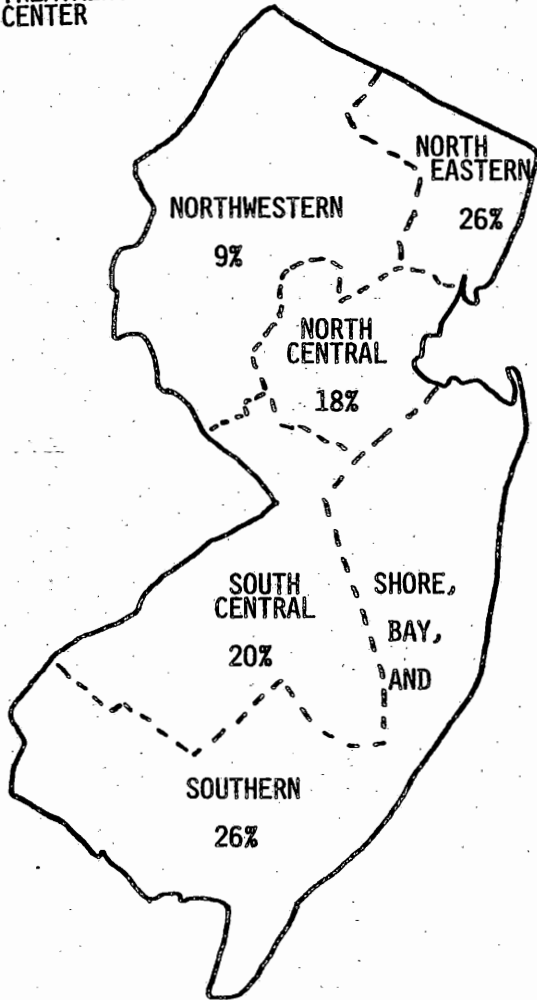
NINE PERCENT OR 276 OFFENDERS IN THE YOUTH COMPLEX WERE COMMITTED FROM MONMOUTH COUNTY.

**AVENEL  
ADULT  
DIAGNOSTIC  
AND  
TREATMENT  
CENTER**

**CLINTON  
CORRECTIONAL  
WOMEN**

**TRAINING SCHOOLS**

JAMESBURG - BOYS  
SKILLMAN - GIRLS  
SKILLMAN - BOYS



ONE PERCENT OF ADTC POPULATION WAS NOT CODED.

ONE PERCENT OF THE CLINTON WOMEN POPULATION WAS NOT CODED.

SEVEN PERCENT OF THE TRAINING SCHOOL'S POPULATION WAS NOT CODED.

**THE COUNTIES HAVE BEEN DIVIDED INTO FIVE SECTIONS:**

NORTHWESTERN - HUNTERDON, MORRIS, SUSSEX, AND WARREN COUNTIES.  
 NORTHEASTERN - BERGEN, ESSEX, HUDSON, AND PASSAIC COUNTIES.  
 NORTH CENTRAL - MIDDLESEX, SOMERSET, AND UNION COUNTIES.  
 SOUTH CENTRAL - BURLINGTON, CAMDEN, GLOUCESTER, AND MERCER COUNTIES.  
 SHORE, BAY, AND SOUTHERN - ATLANTIC, CAPE MAY, CUMBERLAND, MONMOUTH, OCEAN, AND SALEM COUNTIES.

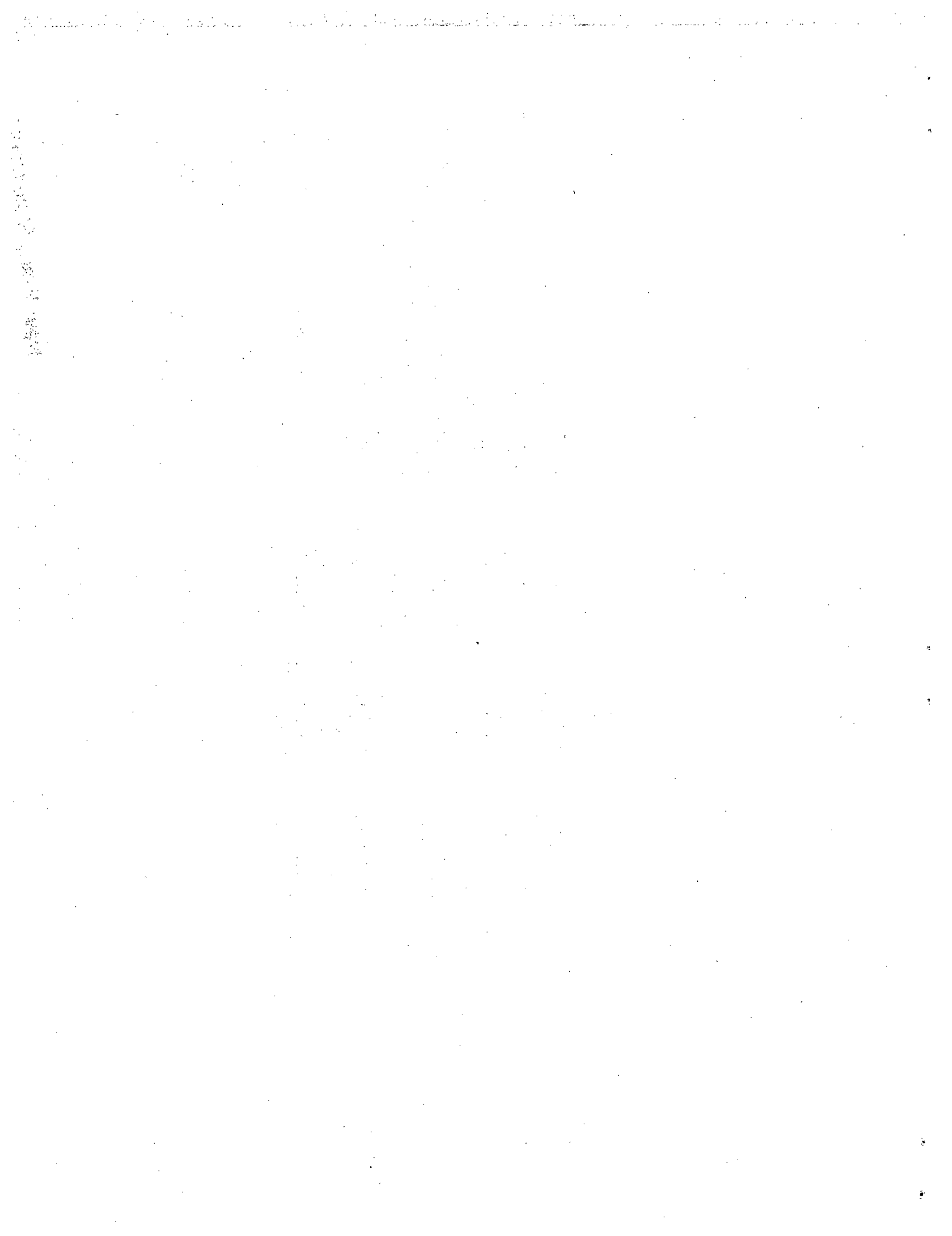
OFFENDERS IN INSTITUTIONS FOR WOMEN, BOYS, GIRLS, AND SEX OFFENDERS ON JUNE 8, 1983 BY COUNTY OF COMMITMENT

INSTITUTION	TOT OFF	ATL	BER	BUR	CAM	CMY	CUM	ESX	GLO	HUD	HUN	MER	MID	MON	MOR	OCN	PAS	SAL	SOM	SUS	UNI	WAR	O/S	N/C
ADTC	258 100%	9 3%	17 6%	15 5%	20 7%	2	10 3%	28 10%	4 1%	6 2%		13 5%	24 9%	33 12%	15 5%	13 5%	15 5%		4 1%	6 2%	18 6%	3 1%	1	2
CLINTON-WOMEN	321 100%	19 5%	16 4%	3	18 5%	2	9 2%	54 16%		17 5%	2	25 7%	20 6%	42 13%	7 2%	3	36 11%	1	10 3%	2	32 9%			3
JAMESBURG BOYS	400 100%	24 6%	13 3%	13 3%	26 6%	3	12 3%	60 15%	3	8 2%	2	20 5%	29 7%	28 7%	3	11 2%	56 14%	8 2%	17 4%	3	26 6%	1		34 8%
SKILLMAN GIRLS	15 100%		1 6%	1 6%				3 20%		1 6%				2 13%			4 26%				1 6%			2 13%
SKILLMAN BOYS	170 100%	14 8%	1	3 1%	23 13%		5 2%	19 11%		10 5%		8 4%	6 3%	9 5%	3 1%	6 3%	37 21%	2 1%	3 1%	1	10 5%	3 1%		7 4%
OTHER INSTITUTIONS TOTALS	1,164 100%	66 5%	48 4%	35 3%	87 7%	7	36 3%	164 14%	7	42 3%	4	66 5%	79 6%	114 9%	28 2%	33 2%	148 12%	11	34 2%	12 1%	87 7%	7	1	48 4%

TWELVE PERCENT OF THE INMATES AT AVENEL ADULT DIAGNOSTIC AND TREATMENT CENTER WERE COMMITTED FROM MONMOUTH COUNTY AND 10% WERE COMMITTED FROM ESSEX COUNTY.

SIXTEEN PERCENT OF THE WOMEN AT CLINTON WERE COMMITTED FROM ESSEX COUNTY, 13% FROM MONMOUTH COUNTY, AND 11% FROM PASSAIC COUNTY.

SEVENTEEN PERCENT OF THE JUVENILES IN TRAINING SCHOOLS WERE COMMITTED FROM PASSAIC COUNTY AND 14% WERE FROM ESSEX COUNTY.



ABBREVIATIONS FOR COUNTIES

"COUNTY OF COMMITMENT" IS BASED ON THE ORIGINAL OR INITIAL COMMITMENT TO THE STATE CORRECTIONAL SYSTEM AND DOES NOT REFLECT ANY COUNTY OR ADDITIONAL SENTENCES WHICH ARE RECEIVED SUBSEQUENT TO TIME OF ORIGINAL ADMISSION.

ATL - ATLANTIC	MID - MIDDLESEX
BER - BERGEN	MON - MONMOUTH
BUR - BURLINGTON	MOR - MORRIS
CAM - CAMDEN	OCN - OCEAN
CMY - CAPE MAY	PAS - PASSAIC
CUM - CUMBERLAND	SAL - SALEM
ESX - ESSEX	SOM - SOMERSET
GLO - GLOUCESTER	SUS - SUSSEX
HUD - HUDSON	UNI - UNION
HUN - HUNTERDON	WAR - WARREN
MER - MERCER	O/S - OUT OF STATE
	N/C - NOT CODED

