

75, 974.905
044.4
c.1

DEPARTMENT OF HUMAN SERVICES

INTER-OFFICE COMMUNICATION

DATE November 18, 1996

TO William Waldman
Commissioner

FROM

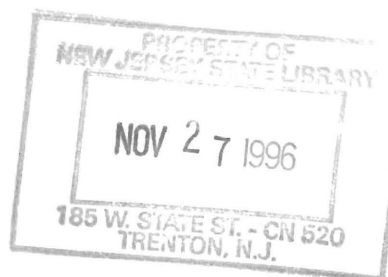
Karen Highsmith
Director



SUBJECT CURRENT PROGRAM STATISTICS

Attached please find CURRENT PROGRAM STATISTICS, including the FDP Statistical Summary for September 1996. Also included are explanatory notes for the various data elements.

Should you have any questions, please feel free to call me.



KH:kas:c

Attachments

c Guhl
Grant
Miller
Tencza

State of New Jersey
Department of Human Services
Division of Family Development

CURRENT PROGRAM STATISTICS

September 1996
Karen Highsmith, Director

State of New Jersey
Department of Human Services
Division of Family Development

CURRENT PROGRAM STATISTICS
September 1996

TABLE OF CONTENTS

	Page
Highlights of Current Program Statistics	1-3
Statistics by County, September 1996	
Table 1 AFDC	4
Graph 1 Current AFDC Families.....	4
Table 2 Food Stamp Program.....	5
Graph 2 Current Food Stamp Households/Persons	5
Table 3 AFDC/SSI Emergency Assistance Program	6
Graph 3 Current AFDC Families Receiving Emergency Assistance	6
Table 4 Family Development Program.....	7
State Summary, 1994 - 1996	
Table 5 AFDC, September 1994 - September 1996.....	8
Graph 4 Families Receiving AFDC, 9/94 - 9/96	8
Table 6 Food Stamp Program, September 1994 - September 1996	9
Graph 5 Food Stamp Households, 9/94 - 9/96	9
Graph 6 Food Stamp Recipients, 9/94 - 9/96.....	10
Table 7 AFDC Emergency Assistance Program, September 1994 - September 1996.....	11
Graph 7 AFDC Families Receiving Emergency Assistance, 9/94 - 9/96	11
Table 8 JOBS/FDP Participation Rates, by County and Statewide, September 1994 - September 1996.....	12
Graph 8 JOBS/FDP Participation Rates, 9/94 - 9/96	12-13
Table 9 General Assistance, and GA Emergency Assistance, June 1994 - June 1996.....	14
Graph 9 General Assistance Recipients, 6/94-6/96	14
Table 10 Child Support and Paternity, Fiscal Years 1994-1996	15
Explanatory Notes.....	16-17
Supplement	
Table 11 General Assistance Recipients and EA Payments by County and Municipality, June 1996	18
Table 12 Child Support and Paternity Cases Remaining Open , Quarter Ending September 1996	19

Highlights of Current Program Statistics

AFDC (Tables 1 and 5, Graphs 1 and 4)

109,000 eligible families in New Jersey were receiving AFDC as of the end of September 1996:

- **99,000** single head of household families (Regular AFDC, C segment).
- Among two-parent families, less than **2500** Unemployed Parent families (F Segment) and more than **2900** State AFDC families (N Segment).
- **5100** Medicaid Only families.
- The largest numbers of families by county: Essex with **27,900**, Hudson with **17,600**, and Camden County with **12,700**. (53.2 percent of all AFDC families)
- Other counties ranged from under **200** families in Hunterdon to **7,100** in Passaic County, with seven counties below **1000** families.

There were about **1000** fewer eligible AFDC families in September 1996 than in August 1996, with a decline of nearly **14,000** over the past two years, more than **5000** of which occurred in the last five months.

- There were about **800** fewer eligible C segment families in September 1996 than in August 1996 and **12,000** less than two years ago.
- F segment families declined from **4000** in September 1994 to **2500** in September 1996.
- State AFDC (N segment) was about **3400** in September 1994 and slowly declined to about **2900** by September 1996.
- Medicaid Only families remained at or below **5000** in 1994, but averaged nearly **5200** for 1995. For the first nine months of 1996 they have averaged close to **5100**.

FOOD STAMP PROGRAM (Tables 2 and 6, Graphs 2, 5, and 6)

At the end of September 1996, about **212,000** households were participating in the Food Stamp Program:

- **103,000** AFDC households with **323,000** persons.
- **109,000** Other Low Income households with **166,000** persons.
- With a total of less than **489,000** persons, including more than **234,000** adults and more than **254,000** children
- **48.7 percent** of the households were in Essex (**54,000**), Hudson (**29,000**) and Camden (**21,000**) Counties.
- In September, the number of adults exceeded the number of children in Food Stamp households in **seven** counties (Bergen, Hunterdon, Monmouth, Morris, Somerset, Sussex, and Warren).

Food Stamp households in New Jersey remained in the 220,000 to 223,000 range from September 1994 through June 1996 except for a peak in March 1995 of almost 225,000. At 212,000 total Food Stamp households, September 1996 is the fourth consecutive month with a large decline.

- The number of Other Low Income households has exceeded the number of AFDC(FS) households since November 1995, with a difference of more than **6000** in September 1996. The average number of Other Low Income households receiving Food Stamps was **106,000** for all of 1994 and more than **112,000** for the first nine months of 1996, though there was a steady decline after May 1996. AFDC(FS) households averaged nearly **115,000** for 1994, and only **107,000** for the first nine months of 1996.
- After a peak of **529,000** in March 1995, the number of Total Recipients has been moving downward. With a steeper decline in recent months, the September 1996 level of less than **489,000** was down almost **25,000**, or nearly **5 percent**, from four month earlier.
- The number of Recipient Adults averaged **246,000** for 1994 through the first five months of 1996. From May through September the number declined from about **247,000** to **234,000**.
- After a peak of more than **279,000** in March 1995, the number of Recipient Children has been moving steadily downward. The September 1996 level of less than **254,000** was **25,000**, or **9 percent**, below that peak.

EMERGENCY ASSISTANCE (Tables 3, 7 and 9, Graphs 3, 7 and 9)

In September 1996 4600 eligible AFDC families and 405 SSI recipients received Emergency Assistance (EA) payments in New Jersey. For AFDC families this included:

- **1625** families with Temporary Rental Assistance (TRA)
- **337** motel placements and **362** emergency shelter placements
- All other AFDC-EA accounted for **2,276** families, including back rent, back utilities, security deposits, furnishings, clothing and food allowance, or transitional housing.
- **1233** AFDC families in Essex County received EA, with **646** in Middlesex, **487** in Passaic, and **416** in Bergen. All other counties had between **3** and **368**, with ten counties **under 100**.

In the past two years, the average number of AFDC families receiving EA payments was 7300 in 1994, 5800 in 1995, and 4900 for the first nine months of 1996.

- The number of AFDC families provided TRA each month has declined steadily from an average of **3200** in 1994 to **1800** for the first nine months of 1996.
- Emergency Shelter has been provided to an average of **under 400** AFDC families for 1994 through the first nine months of 1996. Motel Housing declined from an average of close to **500** in 1994 to about **300** for the first nine months of 1996.
- An average of **3300** families received Other EA in 1994, **2800** in 1995, and almost **2500** for the first nine months of 1996. The number had dropped below **2100** in February 1996.

For 1994 there were an average of 7800 GA EA recipients, 7400 for 1995, and 7300 for the first half of 1996. TRA payments were made to an average of 4700 recipients in 1994 and an average of about 4400 since.

JOBS/FDP PARTICIPATION RATES (Table 8, Graph 8)

The Statewide JOBS/FDP participation rate of 29 percent in September 1996 was the highest in the last two years. This is the first month of increase since May. The rate is almost four percent above September 1995 and nearly ten percent above two years ago when the rate was only 19.1 percent. A clear upward shift has been evident over the past two years.

- While most counties have shown upward movement in participation rates in the past two years, recent declines eroded earlier gains in some counties. With some fluctuations, Cape May, Essex, Gloucester, Hudson, Hunterdon, Middlesex, Monmouth, Ocean, and Passaic showed some upward movement. Bergen, Burlington, Camden, Mercer and Union have had little or no increase overall. Cumberland has maintained very high participation rates. Atlantic, Salem, Somerset, Sussex, and Warren also exhibited high rates, but have had wide fluctuations. Morris increased markedly in 1995 and remains at record levels (at or near 100 percent).
- For September 1996 County rates were distributed as follows:

19 to 29 percent	-- Bergen, Burlington, Camden, Cape May, Essex, Hudson, Mercer, Ocean and Union.
30 to 39 percent	-- Gloucester, Hunterdon, and Monmouth
40 to 49 percent	-- Middlesex, Passaic, Salem and Sussex
50 percent or more	-- Atlantic, Cumberland, Morris, Somerset, and Warren
- From August to September 1996, participation rates increased in 19 of the State's 21 counties.

GENERAL ASSISTANCE (Table 9, Graph 9)

June 1994 and June 1996 (the latest available information) had the highest and lowest number of GA recipients in the two year period, at 37,000 and more than 31,000 respectively. GA recipients averaged 36,000 for 1994, and less than 34,000 in 1995 and the first half of 1996.

- The number of employable GA recipients closely mirrored the changes in total GA recipients, declining from almost 25,000 in June 1994, to less than 21,000 in June 1996. They averaged 24,000 for 1994, and about 22,500 in 1995 and the first half of 1996.
- Over the two year period Unemployable GA recipients remained within a relatively narrow range. The level remained around 11,000 to 12,000 from June 1994 through October 1995, then declined to about 10,000 from November 1995 through January 1996, and remained near 11,000 through June 1996.

CHILD SUPPORT AND PATERNITY COLLECTIONS (Table 10)

Total collections of the Child Support and Paternity Program declined by 5.1 percent, from \$587 million in FFY 1995 to \$557 million in FFY 1996.

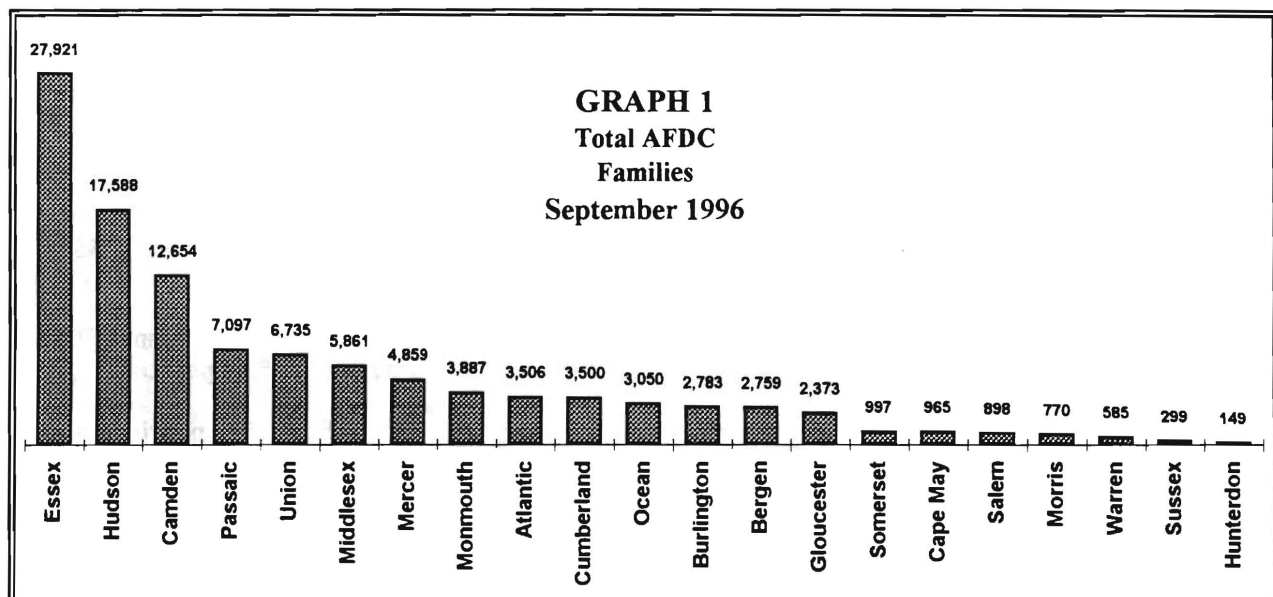
- AFDC/Foster Care collections declined by 2.2 percent to less than \$95 million. Non-AFDC collections dropped from \$490 million to less than \$463 million, a decline of 5.6 percent.
- Total Federal tax, State tax, and UIB collections together increased by \$13 million, which was more than offset by declines of over \$32 million (18 percent) in the Other/Own Behalf category and more than \$12 million (4 percent) in the Income Withholding category.

New Jersey Department of Human Services
Division of Family Development

Table 1
AFDC Program
NUMBER OF APPLICATIONS AND TERMINATIONS DURING REPORT MONTH, AND
NUMBER OF ELIGIBLE FAMILIES RECEIVING AFDC AT END OF REPORT MONTH
September 1996

County	Applications Approved	Terminations	Regular AFDC (C Segment)	Unemployed Parents(F)	State AFDC(N)	Medicaid Only	Total AFDC
Atlantic	238	309	3,242	86	65	113	3,506
Bergen	151	185	2,464	107	114	74	2,759
Burlington	255	306	2,440	61	66	216	2,783
Camden	847	882	11,174	412	385	683	12,654
Cape May	79	139	812	27	62	64	965
Cumberland	297	336	3,008	142	163	187	3,500
Essex	1,048	1,328	26,573	364	214	770	27,921
Gloucester	246	284	2,069	81	63	160	2,373
Hudson	567	697	15,745	289	623	931	17,588
Hunterdon	23	32	115	3	4	27	149
Mercer	496	491	4,308	80	101	370	4,859
Middlesex	456	533	4,912	211	255	483	5,861
Monmouth	274	309	3,616	67	141	63	3,887
Morris	58	83	701	19	19	31	770
Ocean	239	299	2,608	119	131	192	3,050
Passaic	335	423	6,567	232	233	65	7,097
Salem	86	89	799	10	29	60	898
Somerset	136	152	805	32	35	125	997
Sussex	30	48	255	2	2	40	299
Union	404	461	6,045	97	190	403	6,735
Warren	46	54	486	21	38	40	585
NJ TOTAL	6,311	7,440	98,744	2,462	2,933	5,097	109,236

Data is derived from NJ Division of Family Development's FAMIS report #FF-012



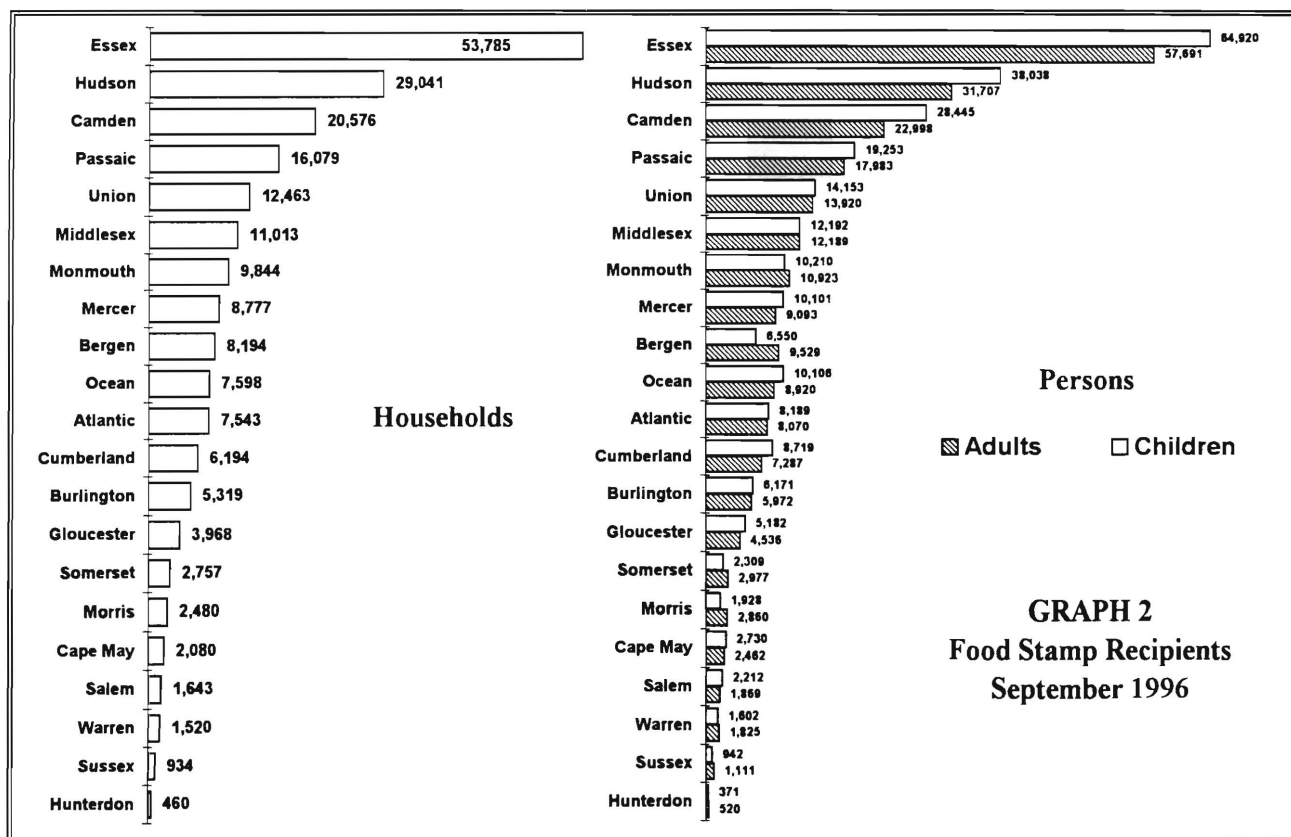
New Jersey Department of Human Services
Division of Family Development

Table 2
FOOD STAMP Program
NUMBER OF ATP'S ISSUED TO HOUSEHOLDS, PERSONS, ADULTS
AND CHILDREN AT THE END OF THE REPORT MONTH
September 1996

County	HOUSEHOLDS			PERSONS				
	AFDC	Other low income	TOTAL	TOTAL	AFDC	Other low income	Adults	Children
Atlantic	3,152	4,391	7,543	16,259	10,211	6,048	8,070	8,189
Bergen	2,534	5,660	8,194	16,079	7,523	8,556	9,529	6,550
Burlington	2,538	2,781	5,319	12,143	7,738	4,405	5,972	6,171
Camden	11,954	8,622	20,576	51,443	38,901	12,542	22,998	28,445
Cape May	994	1,086	2,080	5,192	3,358	1,834	2,462	2,730
Cumberland	3,527	2,667	6,194	16,006	11,718	4,288	7,287	8,719
Essex	27,193	26,592	53,785	122,611	84,249	38,362	57,691	64,920
Gloucester	2,234	1,734	3,968	9,718	6,963	2,755	4,536	5,182
Hudson	16,390	12,651	29,041	69,745	50,111	19,634	31,707	38,038
Hunterdon	112	348	460	891	348	543	520	371
Mercer	4,374	4,403	8,777	19,194	13,397	5,797	9,093	10,101
Middlesex	5,259	5,754	11,013	24,381	15,765	8,616	12,189	12,192
Monmouth	3,782	6,062	9,844	21,133	11,982	9,151	10,923	10,210
Morris	652	1,828	2,480	4,788	1,917	2,871	2,860	1,928
Ocean	3,203	4,395	7,598	19,026	10,462	8,564	8,920	10,106
Passaic	6,654	9,425	16,079	37,236	21,926	15,310	17,983	19,253
Salem	856	787	1,643	4,081	2,784	1,297	1,869	2,212
Somerset	915	1,842	2,757	5,286	2,674	2,612	2,977	2,309
Sussex	307	627	934	2,053	900	1,153	1,111	942
Union	5,649	6,814	12,463	28,073	17,935	10,138	13,920	14,153
Warren	548	972	1,520	3,427	1,710	1,717	1,825	1,602
NJ TOTAL	102,827	109,441	212,268	488,765	322,572	166,193	234,442	254,323

ATP - Authorization to Participate

Data is derived from NJ Division of Family Development's FAMIS report # FB-160.



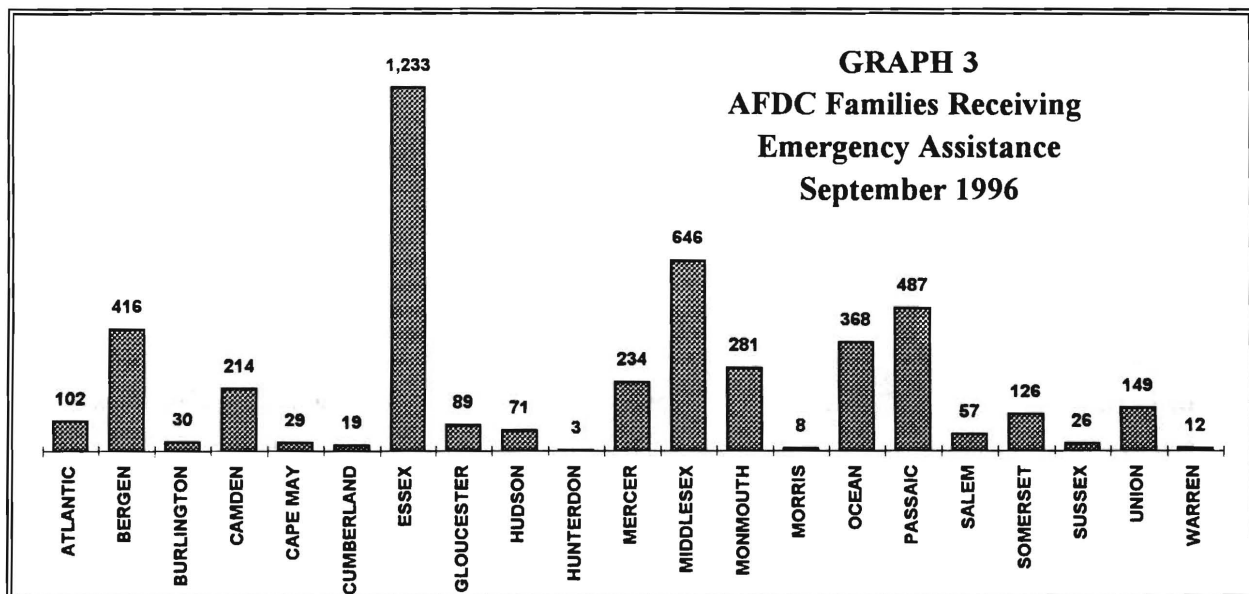
New Jersey Department of Human Services
Division of Family Development

Table 3
AFDC/SSI EMERGENCY ASSISTANCE
NUMBER OF ELIGIBLE FAMILIES RECEIVING EMERGENCY ASSISTANCE PAYMENTS
(UNDUPLICATED CASES)

September 1996

County	AFDC Families Receiving Emergency Assistance					SSI Recipients Receiving EA
	TOTAL AFDC-EA	Temporary Rental Assist.	Motel Housing	Emergency Shelter	Other AFDC-EA	
ATLANTIC	102	37	13	12	40	37
BERGEN	416	200	41	24	151	11
BURLINGTON	30	1	0	24	5	12
CAMDEN	214	74	4	16	120	10
CAPE MAY	29	7	1	0	21	4
CUMBERLAND	19	2	1	9	7	3
ESSEX	1,233	532	7	107	587	49
GLOUCESTER	89	43	4	21	21	2
HUDSON	71	13	4	13	41	4
HUNTERDON	3	0	1	1	1	1
MERCER	234	91	23	4	116	17
MIDDLESEX	646	336	28	37	245	48
MONMOUTH	281	123	45	3	110	18
MORRIS	8	0	1	3	4	8
OCEAN	368	117	117	5	129	88
PASSAIC	487	5	6	26	450	54
SALEM	57	13	10	2	32	4
SOMERSET	126	9	11	26	80	18
SUSSEX	26	3	8	7	8	3
UNION	149	19	5	19	106	12
WARREN	12	0	7	3	2	2
NJ TOTAL	4,600	1,625	337	362	2,276	405

Derived from NJ Division of Family Development FAMIS Reports #FM457 and #FM430-03A



NEW JERSEY DEPARTMENT OF HUMAN SERVICES
DIVISION OF FAMILY DEVELOPMENT

TABLE 4
FAMILY DEVELOPMENT PROGRAM
STATISTICAL SUMMARY

COUNTY	SNAPSHOT OF ACTIVITY AS OF SEPTEMBER 1996				ACTIVITY FOR MONTH OF SEPTEMBER 1996					
	TOTAL NONEXMT JOBS/FDP RECI- PIENTS	EMPLOYMENT DIRECTED ACTIVITIES(1)			PARTIC IN EDAs & RECEIVE SUPPORT SERVICES		PARTIC W/ 1st C M INTV	# EMPL THIS MONTH & STILL REC AFDC	# CLSD ON FAMIS RE EARNINGS (2)	POST AFDC & REC CHILD CARE
		TRAIN- ING	EDUCA- TION	JOB SEARCH	TREs	CHILD CARE				
ATLANTIC	1,093	281	123	85	244	184	177	77	95	197
BERGEN	1,767	215	112	32	172	117	26	17	42	78
BURLINGTON	1,328	240	75	48	305	154	122	61	82	187
CAMDEN	8,642	721	413	219	778	456	372	86	177	249
CAPE MAY	473	61	22	56	42	17	71	11	39	9
CUMBERLAND	1,403	266	151	76	500	207	222	75	98	127
ESSEX	17,010	1,772	967	344	2,157	1,607	510	152	243	208
GLOUCESTER	1,065	229	104	37	397	127	89	21	30	65
HUDSON	11,000	1,076	995	184	1,526	908	235	82	188	295
HUNTERDON	71	9	18	2	9	9	11	7	7	9
MERCER	2,941	288	252	56	250	203	72	45	67	124
MIDDLESEX	3,176	238	269	451	425	222	200	123	102	161
MONMOUTH	2,436	327	232	124	497	317	100	82	80	181
MORRIS	353	195	22	55	67	98	61	10	25	61
OCEAN	1,671	186	76	72	91	124	168	50	80	195
PASSAIC	3,646	1,061	327	46	1,013	398	208	50	95	131
SALEM	359	42	87	17	92	37	21	10	16	46
SOMERSET	491	81	81	23	73	59	14	16	13	41
SUSSEX	168	37	32	32	36	36	16	9	14	31
UNION	3,709	326	254	195	369	210	59	37	94	129
WARREN	361	58	45	45	22	29	15	9	24	17
STATE	63,163	7,709	4,657	2,199	9,065	5,519	2,769	1,030	1,611	2,541

(1) - The number of participants receiving support services may occasionally exceed the number actively participating in EDAs. This can result from extended assessment or evaluation activities, or the issuance of bridge payments.

(2) - FAMIS file date: 9/21/96

New Jersey Department of Human Services
Division of Family Development

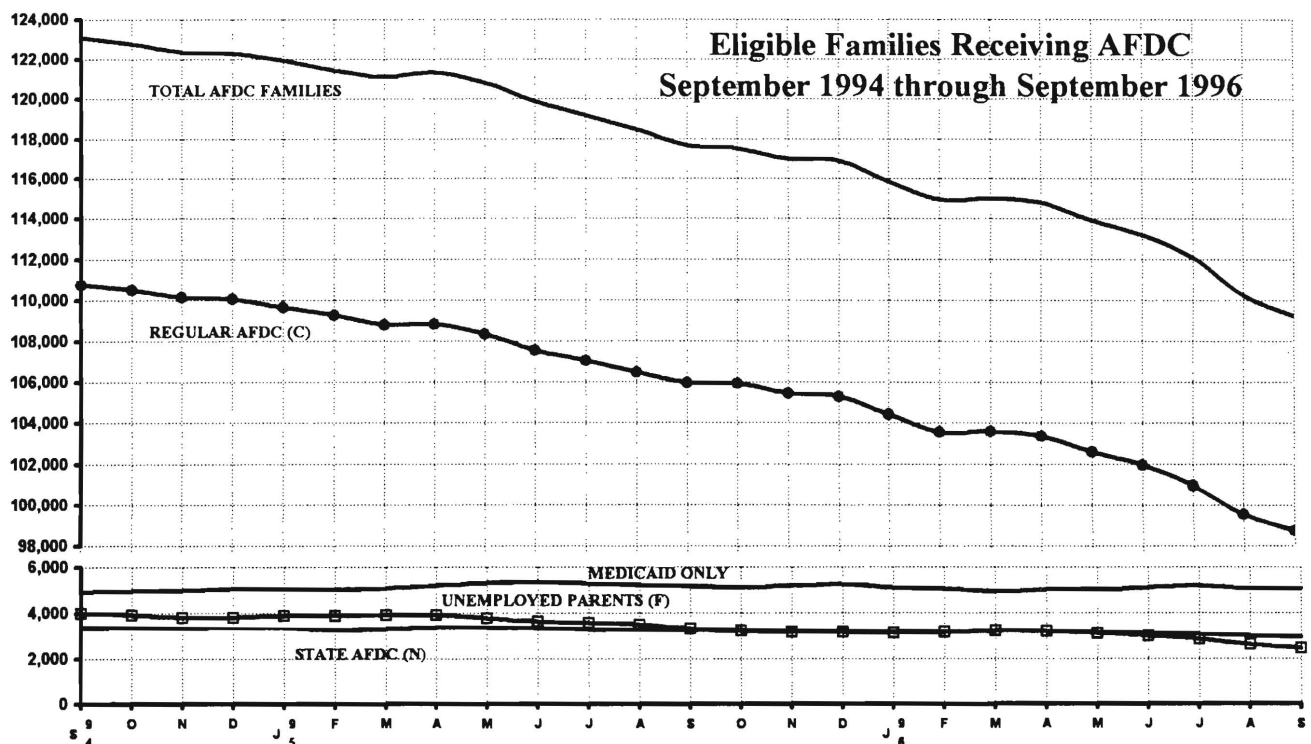
Table 5
AFDC Program

**NUMBER OF APPLICATIONS AND TERMINATIONS DURING REPORT MONTH, AND
NUMBER OF ELIGIBLE FAMILIES RECEIVING AFDC AT END OF REPORT MONTH**
September 1994 through September 1996

	Applications Approved	Terminations	Regular AFDC (C Segment)	Unemployed Parents(F)	State AFDC(N)	Medicaid Only	Total AFDC
1994 Sep	6,266	6,754	110,790	4,007	3,369	4,900	123,066
Oct	6,592	6,950	110,517	3,927	3,340	4,966	122,750
Nov	6,344	6,796	110,181	3,814	3,350	5,002	122,347
Dec	5,682	5,890	110,070	3,789	3,360	5,065	122,284
Average (12 MONTHS)	6,014	6,150	110,901	4,195	3,351	4,928	123,375
1995 Jan	5,583	5,944	109,645	3,875	3,358	5,045	121,923
Feb	5,964	6,515	109,261	3,878	3,270	5,016	121,425
Mar	5,810	6,221	108,800	3,903	3,305	5,088	121,096
Apr	7,096	7,086	108,822	3,907	3,365	5,209	121,303
May	5,288	5,784	108,343	3,773	3,369	5,328	120,813
Jun	5,558	6,458	107,541	3,639	3,336	5,358	119,874
Jul	5,977	6,781	107,028	3,574	3,286	5,293	119,181
Aug	5,547	6,294	106,475	3,489	3,260	5,239	118,463
Sep	5,922	6,647	105,943	3,303	3,260	5,175	117,681
Oct	7,062	7,359	105,917	3,224	3,257	5,110	117,508
Nov	6,083	6,660	105,445	3,164	3,199	5,189	116,997
Dec	5,582	5,775	105,287	3,165	3,189	5,258	116,899
Average	5,956	6,460	107,376	3,575	3,288	5,192	119,430
1996 Jan	5,332	6,236	104,430	3,139	3,173	5,113	115,855
Feb	5,217	6,283	103,561	3,161	3,170	5,060	114,952
Mar	6,317	6,302	103,598	3,230	3,217	4,956	115,001
Apr	6,896	7,241	103,352	3,192	3,211	5,040	114,795
May	5,335	6,152	102,600	3,112	3,163	5,038	113,913
Jun	5,319	6,121	101,947	2,999	3,117	5,116	113,179
Jul	5,874	7,027	100,968	2,843	3,073	5,200	112,084
Aug	5,014	6,789	99,567	2,638	2,993	5,053	110,251
Sep	6,311	7,440	98,744	2,462	2,933	5,097	109,236
Average	5,735	6,621	102,085	2,975	3,117	5,075	113,252

Data is derived from NJ Division of Family Development's FAMIS report #FF-012

GRAPH 4



New Jersey Department of Human Services

Division of Family Development

TABLE 6

FOOD STAMP Program State Summary
NUMBER OF ATP'S ISSUED TO HOUSEHOLDS, PERSONS
ADULTS AND CHILDREN AT THE END OF THE REPORT MONTH
September 1994 through September 1996

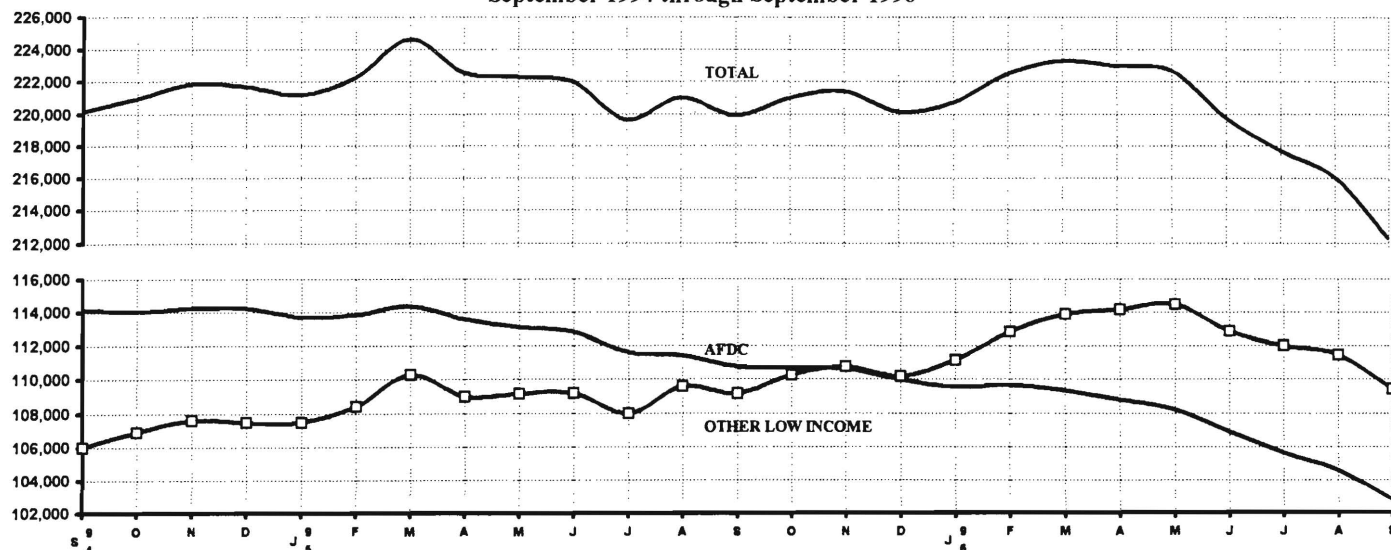
	HOUSEHOLDS			PERSONS				
	AFDC	Other low income	TOTAL	TOTAL	AFDC	Other low income	Adults	Children
1994 Sep	114,177	105,972	220,149	521,945	358,849	163,096	244,835	277,110
Oct	114,039	106,903	220,942	522,406	358,010	164,396	245,676	276,730
Nov	114,251	107,577	221,828	524,090	358,582	165,508	246,659	277,431
Dec	114,232	107,467	221,699	523,825	358,446	165,379	246,517	277,308
AVERAGE (12 months)	114,789	105,924	220,714	525,325	361,323	164,003	246,043	279,282
1995 Jan	113,691	107,493	221,184	522,125	356,763	165,362	245,837	276,288
Feb	113,830	108,421	222,251	524,344	357,419	166,925	247,107	277,237
Mar	114,339	110,279	224,618	529,456	359,404	170,052	249,994	279,462
Apr	113,588	108,991	222,579	524,102	356,717	167,385	247,367	276,735
May	113,125	109,171	222,296	522,173	355,099	167,074	246,949	275,224
Jun	112,827	109,198	222,025	521,084	354,211	166,873	246,557	274,527
Jul	111,635	107,978	219,613	515,478	350,378	165,100	243,727	271,751
Aug	111,415	109,603	221,018	516,618	349,372	167,246	245,110	271,508
Sep	110,760	109,154	219,914	513,517	347,126	166,391	243,723	269,794
Oct	110,697	110,268	220,965	514,598	346,519	168,079	244,911	269,687
Nov	110,630	110,763	221,393	514,823	346,034	168,789	245,455	269,368
Dec	109,992	110,155	220,147	511,727	343,955	167,772	243,965	267,762
AVERAGE	112,211	109,290	221,500	519,170	351,916	167,254	245,892	273,279
1996 Jan	109,554	111,166	220,720	512,165	342,778	169,387	244,801	267,364
Feb	109,649	112,813	222,462	515,181	343,314	171,867	246,961	268,220
Mar	109,364	113,895	223,259	515,676	342,361	173,315	247,695	267,981
Apr	108,787	114,163	222,950	514,375	340,597	173,778	247,380	266,995
May	108,205	114,458	222,663	513,213	338,891	174,322	246,918	266,295
Jun	106,875	112,888	219,763	506,926	334,762	172,164	243,422	263,504
Jul	105,653	112,023	217,676	501,575	331,157	170,418	240,840	260,735
Aug	104,568	111,473	216,041	497,436	328,055	169,381	238,804	258,632
Sep	102,827	109,441	212,268	488,765	322,572	166,193	234,442	254,323
AVERAGE	107,276	112,480	219,756	507,257	336,054	171,203	243,474	263,783

ATP - Authorization to Participate

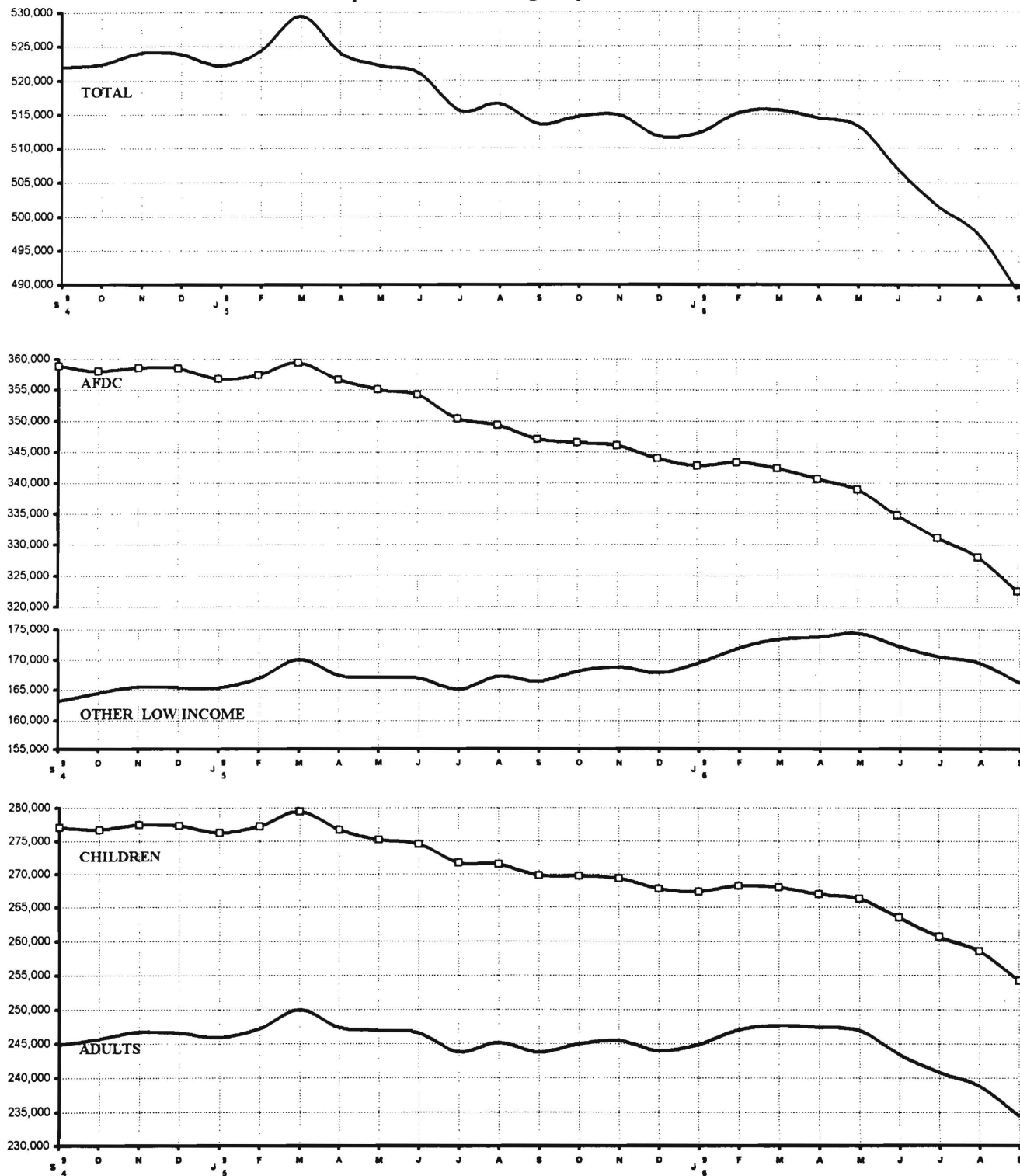
Data is derived from NJ Division of Family Development's FAMIS report # FB-160.

GRAPH 5

Food Stamp Households
September 1994 through September 1996



GRAPH 6
Food Stamp Recipients
September 1994 through September 1996



New Jersey Department of Human Services

Division of Family Development

TABLE 7

EMERGENCY ASSISTANCE Program for AFDC Recipients, State Summary

NUMBER OF ELIGIBLE FAMILIES RECEIVING EMERGENCY ASSISTANCE PAYMENTS

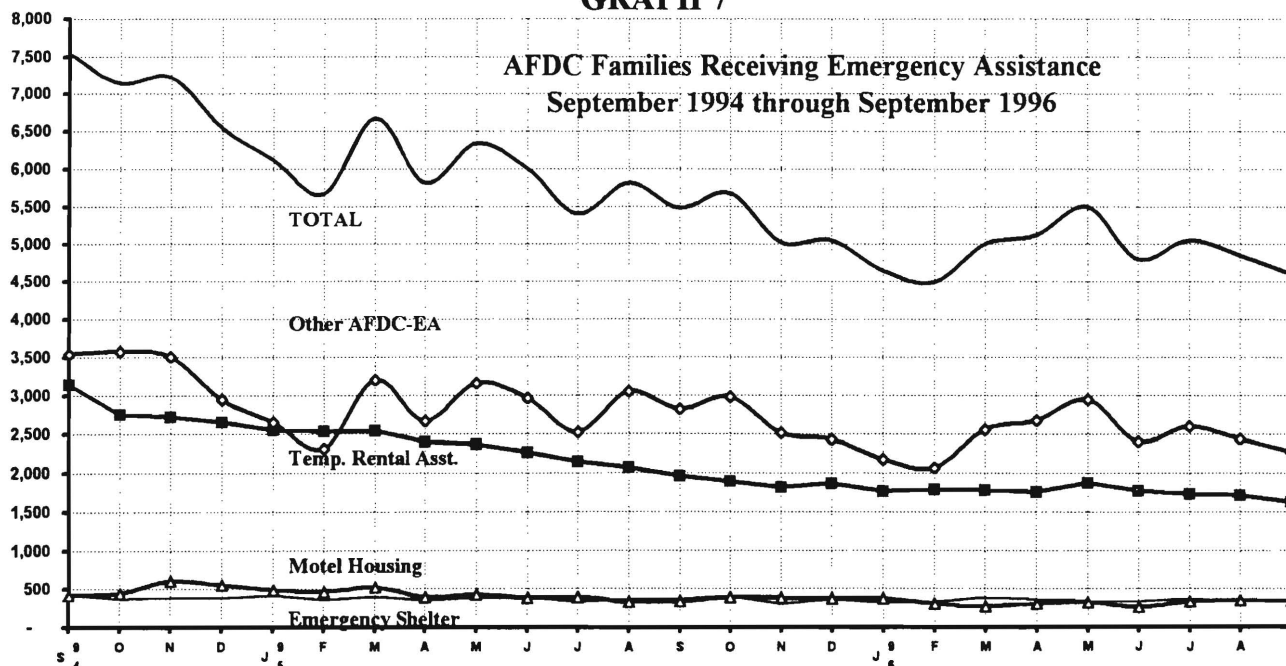
(UNDUPLICATED CASES)

September 1994 through September 1996

	Total families receiving EA	Temporary rental assist.	Motel Housing	Emergency Shelter	Other AFDC-EA
SEP	7,545	3,147	418	430	3,550
OCT	7,147	2,759	442	366	3,580
NOV	7,231	2,720	604	391	3,516
DEC	6,540	2,658	554	379	2,949
Average (12 months)	7,326	3,218	468	379	3,260
1995 JAN	6,115	2,557	487	413	2,658
FEB	5,664	2,535	456	354	2,319
MAR	6,668	2,542	516	402	3,208
APR	5,815	2,402	387	351	2,675
MAY	6,338	2,364	427	381	3,166
JUN	6,007	2,268	382	387	2,970
JUL	5,402	2,149	389	334	2,530
AUG	5,813	2,068	331	362	3,052
SEP	5,482	1,958	336	364	2,824
OCT	5,678	1,891	388	410	2,989
NOV	5,024	1,816	384	302	2,522
DEC	5,048	1,864	377	369	2,438
Average	5,755	2,201	405	369	2,779
1996 JAN	4,639	1,761	374	325	2,179
FEB	4,490	1,788	305	330	2,067
MAR	5,001	1,779	270	388	2,564
APR	5,118	1,760	309	364	2,685
MAY	5,498	1,873	323	350	2,952
JUN	4,791	1,772	266	341	2,412
JUL	5,044	1,729	335	377	2,603
AUG	4,845	1,716	346	339	2,444
SEP	4,600	1,625	337	362	2,276
Average	4,892	1,756	318	353	2,465

Data derived from NJ Division of Family Development FAMIS Report #FM457 and #FM430-03a.

GRAPH 7

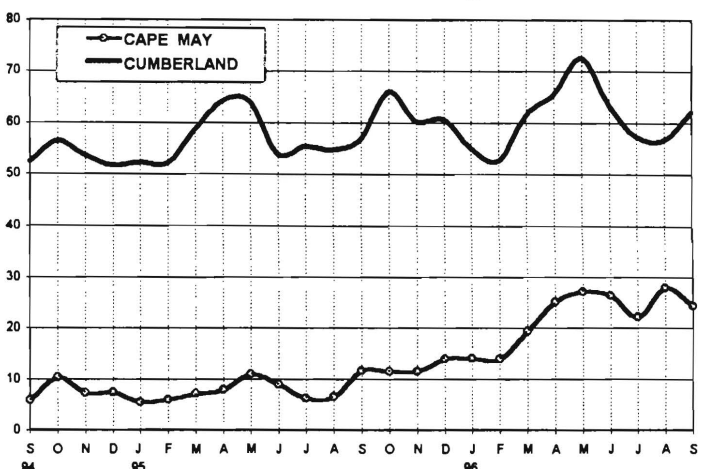
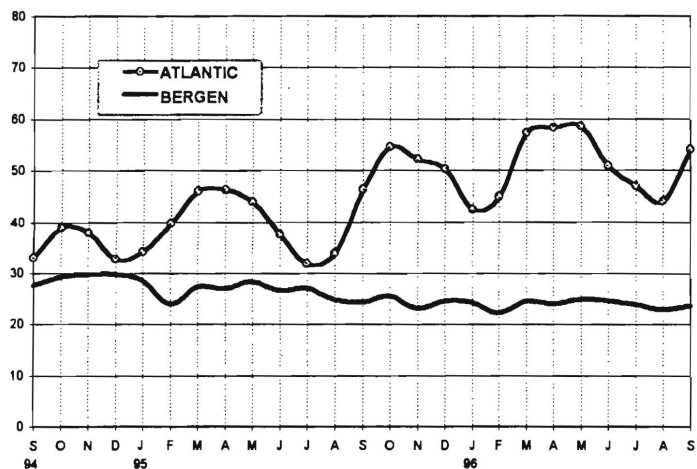
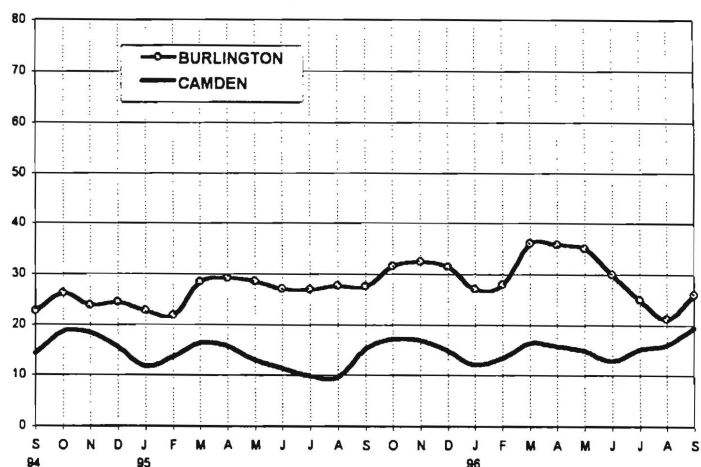
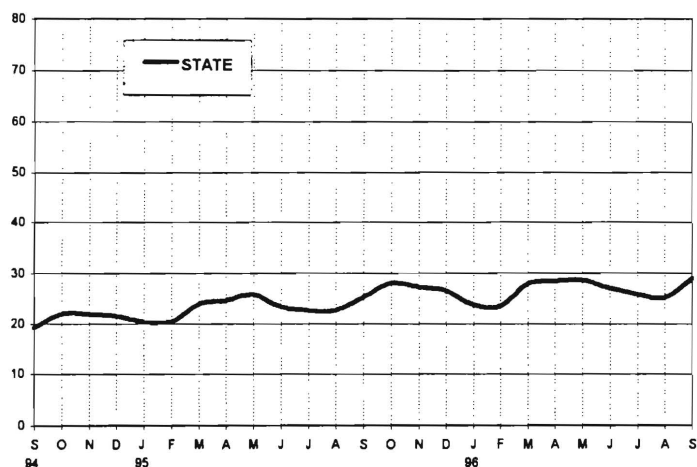


**New Jersey Department of Human Services
Division of Family Development**

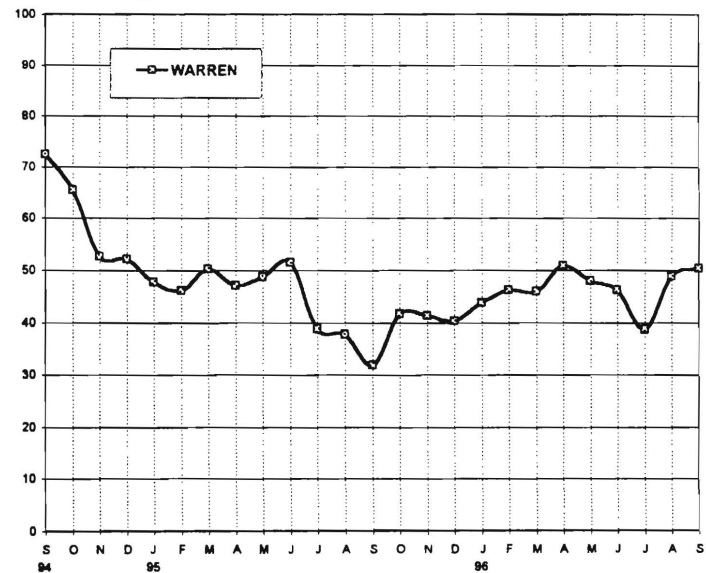
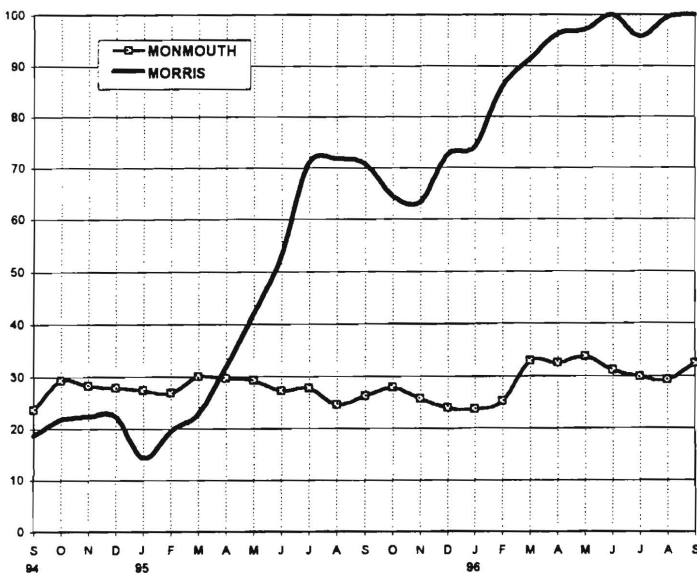
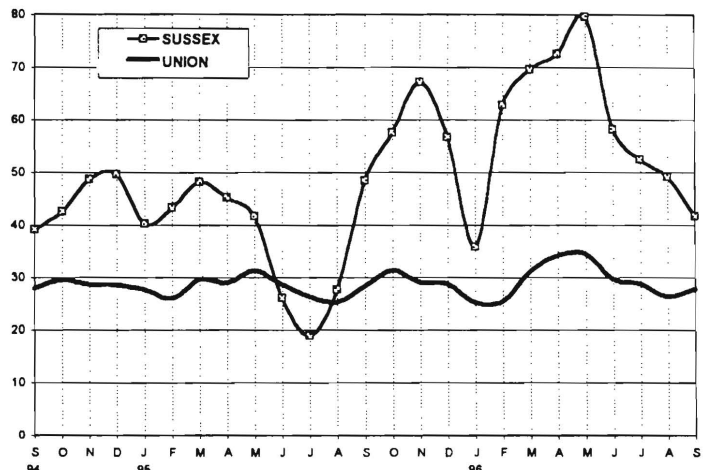
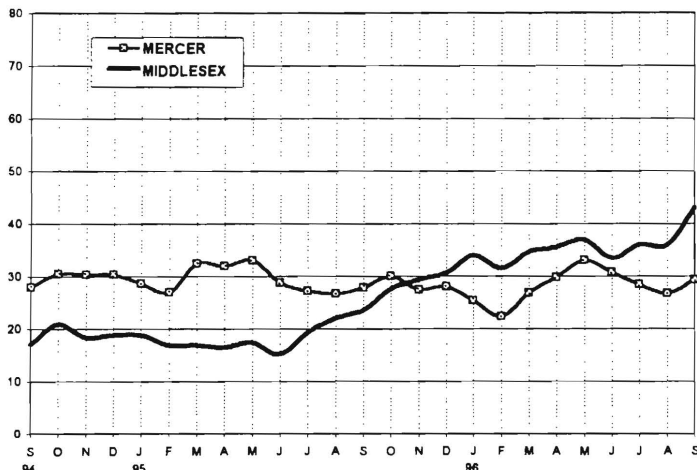
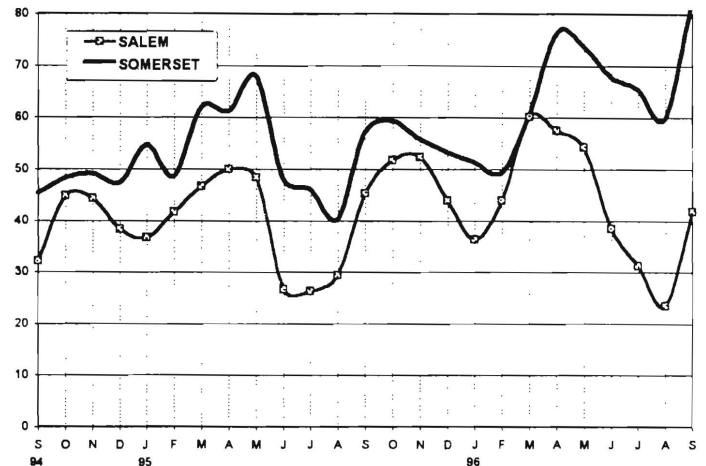
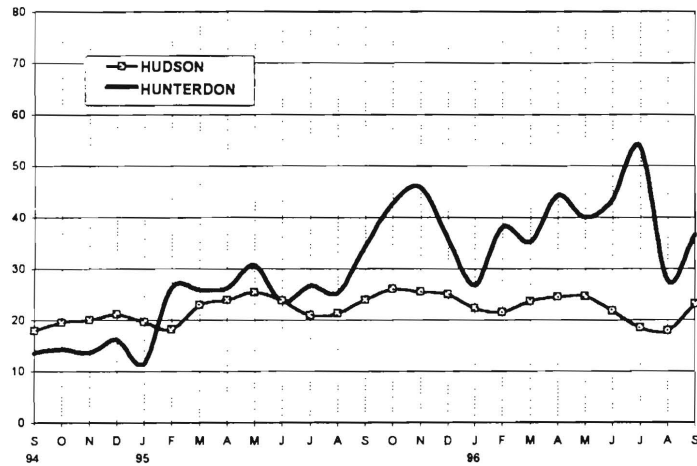
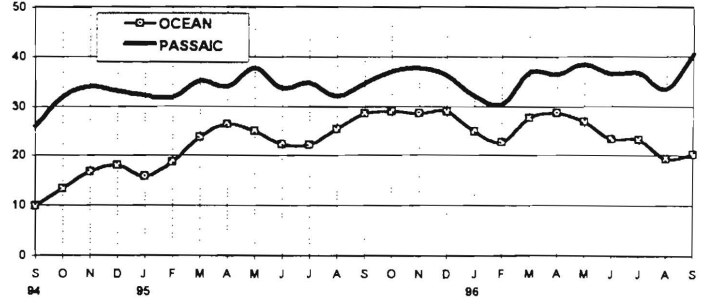
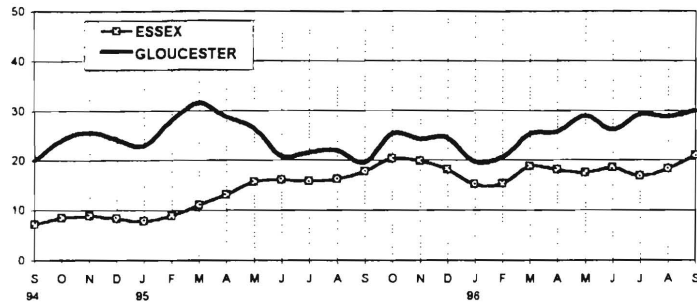
**TABLE 8
JOBS/FDP PARTICIPATION RATES BY MONTH
(PERCENT)**

	STATE	ATLANTIC	BERGEN	BURLINGTON	CAMDEN	CAPE MAY	CUMBERLAND	ESSEX	GLOUCESTER	HUDSON	HUNTERDON	MERCER	MIDDLESEX	MONMOUTH	MORRIS	OCEAN	PASSAIC	SALEM	SOMERSET	SUSSEX	UNION	WARREN
SEP	19.1	33.0	27.6	22.7	14.3	5.8	52.5	7.2	20.0	17.9	13.4	27.9	17.1	23.7	18.7	9.9	25.9	32.2	45.4	39.2	27.9	72.5
OCT	21.8	39.0	29.3	26.2	18.5	10.4	56.4	8.5	24.0	19.5	14.2	30.5	20.8	29.2	21.7	13.4	31.9	44.8	48.3	42.6	29.5	65.4
NOV	21.8	38.0	29.7	23.9	18.3	7.3	53.7	8.8	25.5	20.0	13.5	30.4	18.2	28.2	22.2	16.7	33.9	44.2	49.1	48.7	28.7	52.6
DEC	21.5	32.8	29.7	24.4	15.5	7.5	51.5	8.3	24.2	21.1	16.1	30.4	18.8	27.8	22.4	18.1	33.0	38.3	47.4	49.6	28.6	52.2
95 JAN	20.4	34.2	28.6	22.9	11.7	5.5	52.2	7.8	22.8	19.6	11.5	28.7	18.8	27.3	14.4	15.8	32.1	36.7	54.7	40.2	27.7	47.7
FEB	20.3	39.8	23.9	21.8	13.6	6.0	52.1	8.8	28.1	18.1	26.2	27.0	16.8	26.8	19.5	18.6	31.7	41.7	48.7	43.3	26.0	46.1
MAR	23.8	46.1	27.3	28.5	16.3	7.2	58.6	11.0	31.6	22.9	25.8	32.5	16.9	29.9	22.9	23.6	35.1	46.6	62.0	48.2	29.6	50.3
APR	24.5	46.3	26.9	29.2	15.7	7.9	64.1	13.0	28.7	23.8	26.1	31.9	16.3	29.6	31.9	26.4	33.9	50.0	61.3	45.3	28.9	47.2
MAY	25.7	44.0	28.3	28.6	12.9	10.9	64.0	15.7	26.4	25.4	30.6	33.1	17.4	29.1	42.0	25.0	37.7	48.4	68.0	41.7	31.4	48.7
JUN	23.3	37.7	26.5	27.1	11.3	9.0	53.8	16.0	20.7	23.8	23.5	28.7	15.1	27.2	52.9	22.3	33.6	26.7	48.1	26.1	28.6	51.5
JUL	22.5	31.9	27.0	26.9	9.8	6.3	55.3	15.8	21.5	20.8	26.6	27.3	19.2	27.7	71.0	22.1	34.7	26.3	46.1	19.0	26.3	38.9
AUG	22.6	33.9	24.8	27.7	9.5	6.5	54.6	16.2	22.0	21.2	25.2	26.7	22.0	24.5	71.7	25.4	32.0	29.4	40.3	27.7	25.2	37.8
SEP	25.2	46.4	24.2	27.6	15.1	11.7	56.9	17.7	19.5	23.8	34.3	27.8	23.6	26.2	70.7	28.6	34.5	45.3	57.3	48.4	28.4	32.0
OCT	27.9	54.6	25.5	31.5	17.1	11.4	65.9	20.2	25.3	26.0	42.7	30.1	27.5	27.8	64.4	28.9	37.0	51.7	59.3	57.5	31.4	41.7
NOV	27.2	52.2	23.1	32.5	16.8	11.5	60.2	19.7	24.1	25.4	45.8	27.4	29.3	25.6	63.3	28.6	37.6	52.4	55.8	67.2	29.0	41.3
DEC	26.4	50.3	24.5	31.5	14.8	13.9	60.6	18.1	24.4	25.0	35.9	28.0	30.6	23.9	72.6	28.9	36.2	43.9	53.2	56.7	28.8	40.3
96 JAN	23.7	42.5	24.3	27.1	12.0	14.1	55.1	15.2	19.7	22.2	26.7	25.3	34.0	23.6	74.1	24.8	32.1	36.3	51.3	35.8	25.2	43.8
FEB	23.5	44.9	22.2	27.9	13.3	13.9	52.6	15.3	20.5	21.5	38.0	22.3	31.5	25.1	85.9	22.6	30.4	43.9	49.4	62.9	25.5	46.3
MAR	27.8	57.3	24.5	36.2	16.2	19.4	61.5	18.7	25.1	23.5	35.2	26.9	34.6	32.8	91.4	27.6	36.8	60.2	60.6	69.6	31.3	45.9
APR	28.3	58.3	24.0	35.9	15.7	25.1	65.6	18.1	25.7	24.4	44.3	29.7	35.5	32.5	96.2	28.6	36.4	57.6	76.4	72.6	34.2	50.9
MAY	28.6	58.6	24.9	35.1	14.8	27.2	72.7	17.4	29.0	24.6	40.0	33.0	36.9	33.7	97.1	26.9	38.5	54.3	73.7	79.7	34.6	48.0
JUN	26.9	50.9	24.6	30.0	12.7	26.4	63.4	18.5	26.0	21.8	43.4	30.7	33.4	31.1	100.0	23.3	36.5	38.4	67.8	58.2	29.7	46.3
JUL	25.7	46.9	23.9	25.0	15.0	22.2	57.3	16.9	29.2	18.4	53.8	28.5	36.0	29.8	95.8	23.1	36.7	31.3	65.6	52.5	28.8	38.8
AUG	25.1	44.1	22.9	21.2	15.9	27.9	56.6	18.2	28.7	17.8	27.7	26.7	36.0	29.2	99.5	19.2	33.4	23.4	59.9	49.1	26.4	48.9
SEP	29.0	54.1	23.7	26.0	19.5	24.3	62.1	20.9	30.0	23.0	36.6	29.3	43.0	32.3	100.0	20.2	40.5	41.8	82.7	41.7	27.8	50.4

**GRAPH 8
JOBS/FDP PARTICIPATION RATES (%)**



GRAPH 8 (CONTINUED)
JOBS/FDP PARTICIPATION RATES (%)



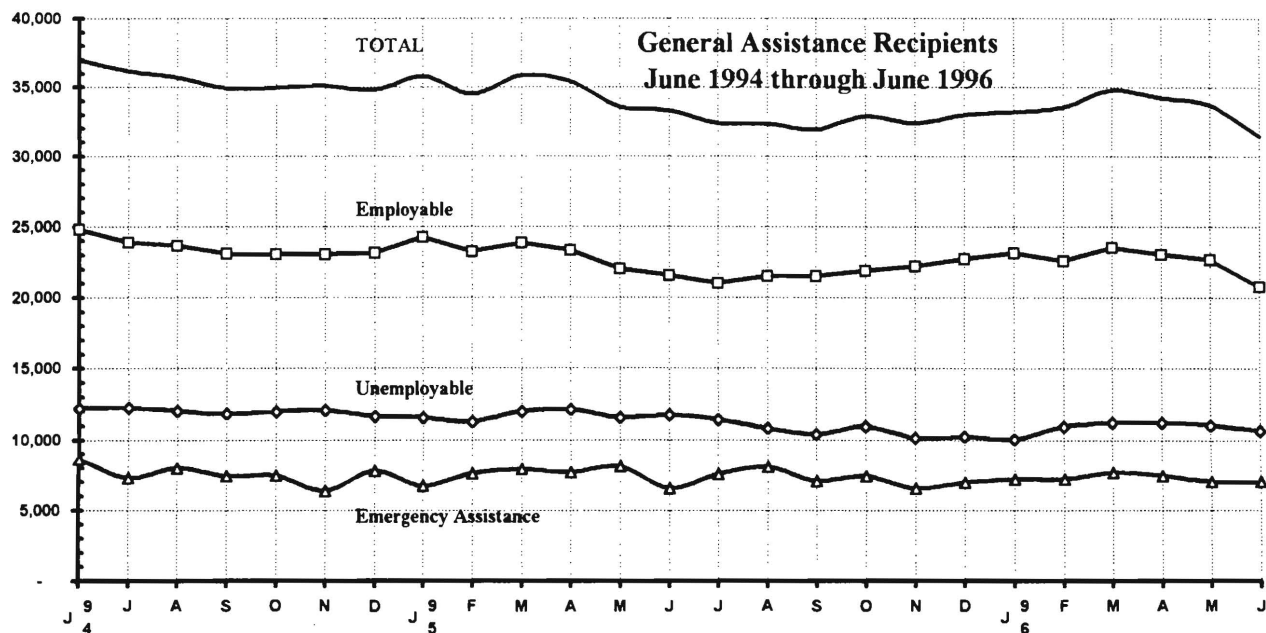
New Jersey Department of Human Services
Division of Family Development

TABLE 9
GENERAL ASSISTANCE Program, State Summary
NUMBER OF EMPLOYABLE AND UNEMPLOYABLE RECIPIENTS
AND EMERGENCY ASSISTANCE PAYMENTS DURING REPORT MONTH
June 1994 through June 1996

	<u>All Persons Aided</u>			<u>Emergency Assistance Payments</u>		
	Employable	Unemployable	Total	Temporary Rental Assist	Other GA-EA	Total
1994 Jun	24,814	12,190	37,004	4,587	4,035	8,622
Jul	23,884	12,261	36,145	4,603	2,685	7,288
Aug	23,671	12,018	35,689	4,489	3,488	7,977
Sep	23,075	11,825	34,900	4,424	3,015	7,439
Oct	23,031	11,950	34,981	4,472	3,032	7,504
Nov	23,046	12,045	35,091	4,607	1,762	6,369
Dec	23,142	11,642	34,784	4,657	3,137	7,794
AVERAGE (12 months)	24,374	11,813	36,187	4,651	3,181	7,832
1995 Jan	24,262	11,537	35,799	4,408	2,343	6,751
Feb	23,219	11,264	34,483	4,851	2,748	7,599
Mar	23,855	11,976	35,831	5,036	2,909	7,945
Apr	23,337	12,082	35,419	4,833	2,887	7,720
May	22,046	11,527	33,573	4,995	3,135	8,130
Jun	21,575	11,738	33,313	4,423	2,146	6,569
Jul	21,000	11,391	32,391	4,048	3,526	7,574
Aug	21,526	10,829	32,355	4,174	3,909	8,083
Sep	21,525	10,389	31,914	4,110	2,945	7,055
Oct	21,913	10,959	32,872	3,939	3,497	7,436
Nov	22,206	10,171	32,377	4,141	2,422	6,563
Dec	22,732	10,268	33,000	4,086	2,902	6,988
AVERAGE	22,433	11,178	33,611	4,420	2,947	7,368
1996 Jan	23,140	10,054	33,194	4,421	2,803	7,224
Feb	22,584	10,927	33,511	4,567	2,651	7,218
Mar	23,528	11,243	34,771	4,472	3,185	7,657
Apr	23,028	11,221	34,249	4,490	2,944	7,434
May	22,657	11,054	33,711	4,064	2,947	7,011
Jun	20,785	10,667	31,452	4,283	2,716	6,999
AVERAGE	22,620	10,861	33,481	4,383	2,874	7,257

Data Sources: NJ Division of Family Development, GA Fiscal Unit

GRAPH 9



New Jersey Department of Human Services
Division of Family Development

TABLE 10
CHILD SUPPORT AND PATERNITY COLLECTIONS
State Summary

\$1000's

COLLECTION SOURCE	Federal Fiscal Years			Percent Change	
	1994	1995	1996	1994-1995	1995-1996
AFDC & FOSTER CARE					
Federal Tax	\$15,170.0	\$16,106.4	\$19,253.9	6.2%	19.5%
State Tax	2,169.8	1,738.0	2,037.3	-19.9%	17.2%
Unempl. Ins. Ben.	4,081.0	4,342.6	5,647.5	6.4%	30.1%
Income Withholding	43,696.4	45,758.7	41,036.1	4.7%	-10.3%
Other/Own Behalf	17,729.3	18,258.4	15,389.8	3.0%	-15.7%
From Other States	3,303.5	3,401.5	3,370.7	3.0%	-0.9%
For Other States	5,612.7	7,009.9	7,787.0	24.9%	11.1%
TOTAL COLLECTION	\$91,762.6	\$96,615.6	\$94,522.3	5.3%	-2.2%
NON- AFDC					
Federal Tax	\$6,288.4	\$7,011.0	\$9,330.9	11.5%	33.1%
State Tax	2,434.1	2,086.7	2,428.5	-14.3%	16.4%
Unempl. Ins. Ben.	13,514.8	14,415.7	20,116.9	6.7%	39.6%
Income Withholding	227,505.1	260,768.1	253,066.8	14.6%	-3.0%
Other/Own Behalf	151,072.8	157,100.0	127,874.0	4.0%	-18.6%
From Other States	19,761.5	20,951.4	20,988.8	6.0%	0.2%
For Other States	21,906.2	27,714.1	28,705.8	26.5%	3.6%
TOTAL COLLECTION	\$442,482.9	\$490,050.0	\$462,511.6	10.7%	-5.6%
TOTAL					
Federal Tax	\$21,458.3	\$23,117.4	\$28,584.8	7.7%	23.7%
State Tax	4,603.9	3,824.8	4,465.7	-16.9%	16.8%
Unempl. Ins. Ben.	17,595.8	18,758.4	25,764.4	6.6%	37.3%
Income Withholding	271,201.4	306,526.8	294,102.9	13.0%	-4.1%
Other/Own Behalf	168,802.1	175,358.4	143,263.9	3.9%	-18.3%
From Other States	23,065.0	24,352.9	24,359.4	5.6%	0.0%
For Other States	27,518.9	34,724.0	36,492.8	26.2%	5.1%
TOTAL COLLECTION	\$534,245.5	\$586,662.6	\$557,033.9	9.8%	-5.1%

Collection Source: Reflects Collections Recorded by County Probation Departments

Explanatory Notes

The Department of Human Services Division of Family Development provides basic income and an opportunity to achieve self-sufficiency for individuals and families served by the Division's programs. The Division provides leadership, direction and supervision to those public agencies responsible for administering those programs and plans for and develops policies to promote self-sufficiency.

AID TO FAMILIES WITH DEPENDENT CHILDREN (AFDC) - Financial assistance for dependent children and their natural or adoptive parents, or certain other relatives recognized as taking the place of a parent.

Regular AFDC (C Segment) - assistance when only one parent is in the home due to death or absence, or both parents are in the home but at least one is incapacitated.

Unemployed Parents (F Segment) - assistance when both parents are in the home, neither is incapacitated and the primary wage earner meets the federally defined criteria for unemployment.

State AFDC (N Segment) - assistance when both parents are in the home, neither is incapacitated, and the primary wage earner does not meet the federal definition of unemployment.

Medicaid Only - families no longer receiving AFDC financial assistance but remaining eligible for Medicaid under applicable provisions which extend coverage beyond period of AFDC assistance.

FOOD STAMP PROGRAM (FS) - Authorized by Congress as a nutritional supplement program to provide low income households with more food of greater variety and better nutrition. Program eligibility is based on household income, resources, and expenses for medical, shelter, and dependent care. CWA staff refer certain recipients to the New Jersey Department of Labor for participation in the Food Stamp Employment and Training Program.

EMERGENCY ASSISTANCE (EA) - Payments to those eligible for AFDC, Supplemental Security Income or General Assistance, authorized during the 30 consecutive days immediately following the emergency (defined as a substantial loss of shelter, food, clothing, or household furnishings by fire, flood or other similar disaster) or if the eligible individual or family is in an imminent or actual state of homelessness.

JOBS/FDP

JOB OPPORTUNITY AND BASIC SKILLS PROGRAM (JOBS) - Federally mandated work/training program for recipients of AFDC established by the Family Support Act of 1988 under Part F of Title IV of the Social Security Act.

FAMILY DEVELOPMENT PROGRAM (FDP) - Reform legislation enacted by the State Legislature in January 1992 to: build, strengthen, and support the family unit; encourage family formation; reduce the long-term aspects of welfare dependency; look to the needs of the family unit as a whole; emphasize education and training for all family members; maximize use of educational, training and employment resources; and develop genuine private sector job opportunities.

SNAPSHOT OF ACTIVITY AT POINT IN TIME - Status of activities as of the end of the month:

Total Non-Exempt JOBS/FDP Recipients - Calculation of the number of mandatory IV-F individuals (FAMIS report # FB304).

Employment Directed Activities (EDA) - From Activities Summary Report (OMEGA report # RM064). Unduplicated count of persons participating in **Training, Education, or Job Search**.

Participants in EDA, Receiving Support Services - From Issuance Disbursement Summary (OMEGA report # RM703). Total number of active participants who show receipt of **Training Related Expenses or Child Care**.

Participation Rate (JOBS/FDP) - Federally mandated calculation method, dividing the number of participants whose combined and averaged weekly hours of participation in qualifying activities equals or exceeds 20 hours per week by the total number of non-exempt IV-F recipients. As of the end of the month.

ACTIVITY FOR THE MONTH - Number of participants with the indicated activity during the month:

Participants with First Case Management Interview - From Activities Summary Report (OMEGA report # RM064).

Number of Persons Employed This Month, Still Receiving AFDC - From Activities Summary Report (OMEGA report # RM064).

Number of Persons Closed on FAMIS Due to Earnings - From FAMIS report # FM463.

Post AFDC and Receiving Child Care - Persons no longer in receipt of AFDC, but still receiving child care. From Issuance Disbursement Summary (OMEGA report # RM703).

New Jersey Department of Human Services
Division of Family Development

TABLE 11
GENERAL ASSISTANCE Program
EMPLOYABLE AND UNEMPLOYABLE RECIPIENTS
AND EMERGENCY ASSISTANCE PAYMENTS,
COUNTIES AND 21 LARGEST MUNICIPALITIES
June 1996

County/Municipality	Total Persons Aided			Emergency Assistance Payments		
	Employable	Unemployable	Total	Temporary Rental Assist.	Other GA-EA	Total
ATLANTIC	1,036	569	1,605	90	39	129
BERGEN	562	460	1,022	273	77	350
BURLINGTON	399	354	753	151	198	349
CAMDEN	2,225	929	3,154	163	60	223
CAPE MAY	74	81	155	16	15	31
CUMBERLAND	328	166	494	6	10	16
ESSEX	6,819	2,281	9,100	919	1,403	2,322
GLOUCESTER	116	128	244	15	11	26
HUDSON	1,178	1,276	2,454	186	37	223
HUNTERDON	42	52	94	12	19	31
MERCER	1,549	909	2,458	350	273	623
MIDDLESEX	508	548	1,056	106	31	137
MONMOUTH	635	655	1,290	317	81	398
MORRIS	138	189	327	35	12	47
OCEAN	593	369	962	357	138	495
PASSAIC	2,500	643	3,143	479	172	651
SALEM	106	60	166	24	17	41
SOMERSET	82	94	176	30	10	40
SUSSEX	30	44	74	23	7	30
UNION	1,811	804	2,615	717	100	817
WARREN	54	56	110	14	6	20
TOTAL NJ	20,785	10,667	31,452	4,283	2,716	6,999

Atlantic City	860	341	1,201	66	32	98
Mount Holly	123	84	207	41	51	92
Camden	1,931	566	2,497	60	12	72
Vineland	157	88	245	2	6	8
East Orange	502	397	899	255	47	302
Irvington	271	97	368	45	5	50
Montclair	174	74	248	36	6	42
Newark	5,344	1,490	6,834	524	1,335	1,859
Orange	405	68	473	38	3	41
Bayonne	130	50	180	8	1	9
Hoboken	127	118	245	21	-	21
Jersey City	711	525	1,236	90	20	110
Trenton	1,422	794	2,216	326	242	568
Perth Amboy	130	118	248	19	4	23
Asbury Park	198	99	297	105	7	112
Long Branch	153	124	277	59	31	90
Lakewood	308	111	419	200	22	222
Passaic	751	249	1,000	239	30	269
Paterson	1,638	270	1,908	173	126	299
Elizabeth	1,170	446	1,616	552	50	602
Plainfield	263	119	382	36	1	37
Total	16,768	6,228	22,996	2,895	2,031	4,926

Source: NJ Division of Family Development, GA Fiscal Unit

New Jersey Department of Human Services
Division of Family Development

TABLE 12
CHILD SUPPORT AND PATERNITY
NUMBER OF CASES REMAINING OPEN, QUARTER ENDING SEPTEMBER 1996

	<u>CASES WITH ORDERS</u>			<u>OTHER CASES (1)</u>		<u>TOTAL</u>	<u>TOTAL</u>	<u>TOTAL</u>
	AFDC AND FOSTER CARE	AFDC AND FOSTER CARE ARREARS (2)	NON-AFDC	AFDC AND FOSTER CARE	NON-AFDC	AFDC AND FOSTER CARE	NON-AFDC	ALL CASES
Atlantic	2,448	4,234	9,866	3,392	5,020	10,074	14,886	24,960
Bergen	1,564	1,790	8,640	1,476	1,289	4,830	9,929	14,759
Burlington	1,959	2,833	10,244	2,093	2,780	6,885	13,024	19,909
Camden	9,534	9,760	21,950	9,623	7,889	28,917	29,839	58,756
Cape May	708	1,036	3,405	556	580	2,300	3,985	6,285
Cumberland	3,763	4,574	10,378	719	489	9,056	10,867	19,923
Essex	16,382	15,845	36,725	23,871	15,795	56,098	52,520	108,618
Gloucester	1,764	2,161	6,238	1,231	1,410	5,156	7,648	12,804
Hudson	7,991	7,201	18,953	11,495	8,965	26,687	27,918	54,605
Hunterdon	154	254	1,615	95	117	503	1,732	2,235
Mercer	4,349	5,300	12,568	4,017	3,870	13,666	16,438	30,104
Middlesex	3,257	4,478	14,584	3,733	3,621	11,468	18,205	29,673
Monmouth	3,533	4,659	12,938	2,306	2,452	10,498	15,390	25,888
Morris	417	479	3,613	744	770	1,640	4,383	6,023
Ocean	1,830	2,862	9,355	2,151	2,828	6,843	12,183	19,026
Passaic	5,293	5,542	15,554	6,012	5,859	16,847	21,413	38,260
Salem	1,057	1,395	3,425	382	333	2,834	3,758	6,592
Somerset	529	595	3,149	676	930	1,800	4,079	5,879
Sussex	287	505	2,196	254	272	1,046	2,468	3,514
Union	3,695	4,238	12,667	4,981	4,169	12,914	16,836	29,750
Warren	557	968	2,803	207	197	1,732	3,000	4,732
NJ TOTAL	71,071	80,709	220,866	80,014	69,635	231,794	290,501	522,295

Data Sources: Automated Child Support Enforcement System #CS199-3

(1) - Needing location, paternity, or other services to establish an obligation

(2) - Cases with arrears *only*