



AtlantiCare Regional Medical Center - Mainland Campus

Intensive Community Perinatal Center at 65 Jimmie Leeds Road, Pomona, NJ, 08240

[Facility website](#)

Side-by-Side Hospital View

- ⊘ Recognition as Baby-Friendly Hospital i
- ✔ Lactation Consultants Available i
- ✔ Midwives Available i
- ✔ Implementation of AIM Bundle(s) i
- ✔ SCN and/or NICU Available i
- ✔ Neonatologist/Perinatologist Available i
- Nurse to Patient Ratio: **1 to 5.6** i

Selected Metrics

Birthing Person Characteristics

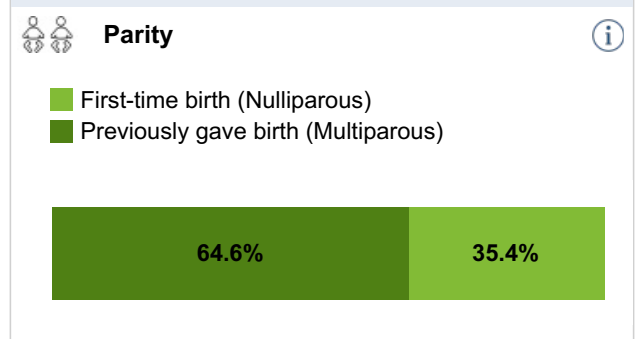
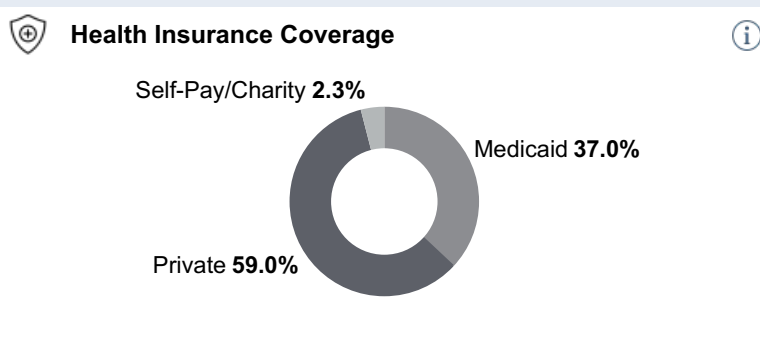
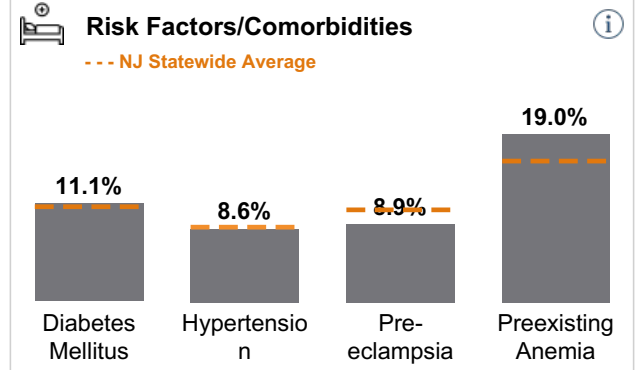
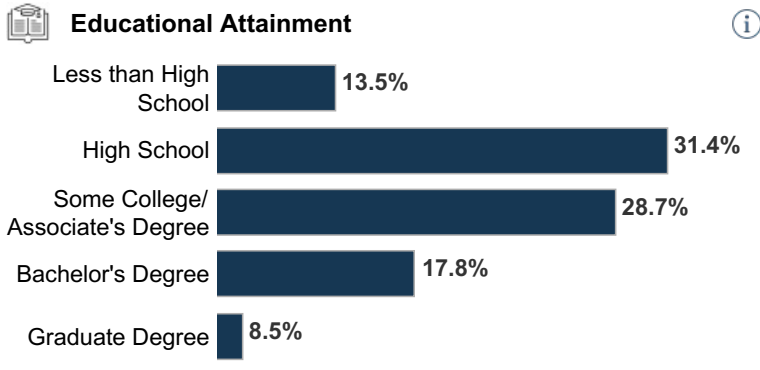
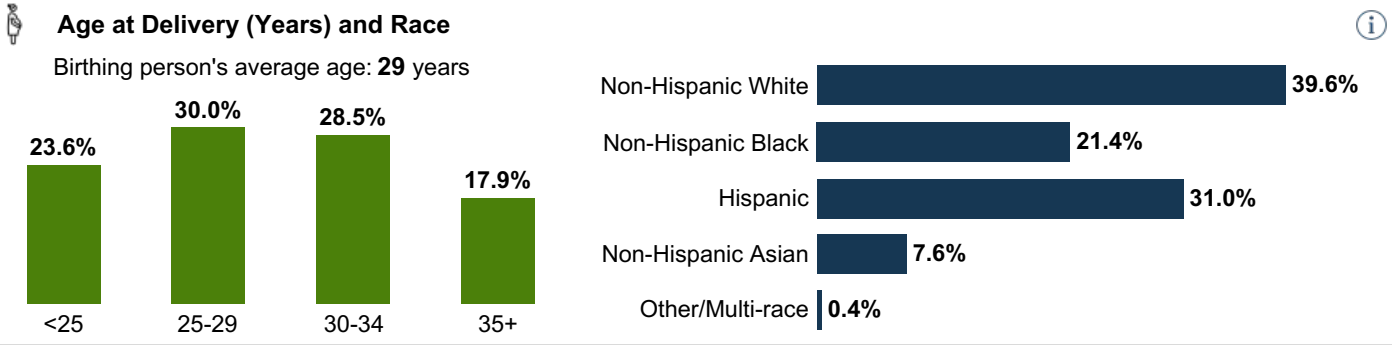
Newborn Characteristics

Delivery Methods & Procedures

Delivery Complications

Year 2019

Total number of delivery hospitalizations: **2,029**



Disclaimer: The NJ Department of Health does not endorse any particular hospital, and strongly suggests that you discuss your specific health care needs with your health care provider. **Date last updated:** 1/15/2026