

DEPARTMENT OF HUMAN SERVICES  
INTER-OFFICE COMMUNICATION

974.905  
844.4  
c.2

DATE October 20, 1995

TO William Waldman  
Commissioner

FROM Karen Highsmith  
Acting Director



SUBJECT CURRENT PROGRAM STATISTICS

Attached please find CURRENT PROGRAM STATISTICS, including the FDP Statistical Summary for August 1995. Also included are explanatory notes for the various data elements.

Should you have any questions, please feel free to call me.

KH:kas:c

Attachments

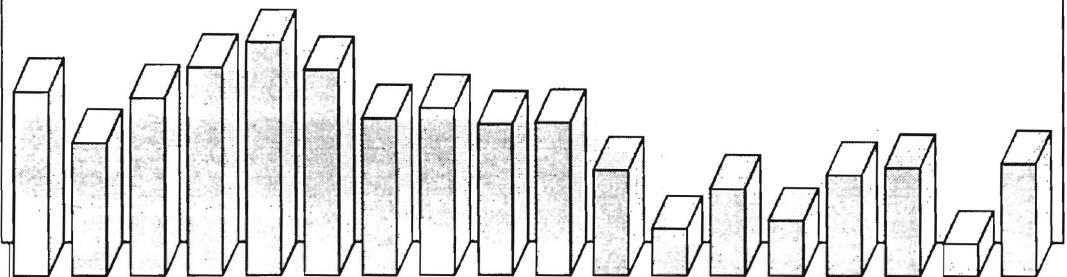
c Guhl  
Lockhart  
Grant  
Tencza

*State of New Jersey  
Department of Human Services  
Division of Family Development*

# **CURRENT PROGRAM STATISTICS**

August 1995

Karen Highsmith, Acting Director



State of New Jersey  
Department of Human Services  
Division of Family Development

**CURRENT PROGRAM STATISTICS**  
August 1995

TABLE OF CONTENTS

	<b>Page</b>
<b>Highlights of Current Program Statistics.....</b>	<b>1-3</b>
<b>Statistics by County, August 1995</b>	
Table 1 AFDC .....	4
Graph 1 Current AFDC Families.....	5
Table 2 Food Stamp Program.....	6
Graph 2 Current Food Stamp Households/Persons.....	7
Table 3 Emergency Assistance Program.....	8
Graph 3 Current Families Receiving Emergency Assistance.....	9
Table 4 Family Development Program .....	10
<b>State Summary, 1993 - 1995</b>	
Table 5 AFDC, August 1993 - August 1995.....	11
Graph 4 Families Receiving AFDC,8/93-8/95 .....	12
Table 6 Food Stamp Program, August 1993 - August 1995 .....	13
Graph 5 Food Stamp Households, 8/93-8/95.....	14
Graph 6 Food Stamp Recipients, 8/93-8/95 .....	15
Table 7 Emergency Assistance Program, August 1993 - August 1995 [Under Revision].....	16
Graph 7 AFDC Families Receiving Emergency Assistance 8/93-8/95 [Under Revision] .....	17
Table 8 JOBS/FDP Participation Rates, by County and Statewide, January 1994 - August 1995 .....	18
Graph 8 JOBS/FDP Participation Rates, 10/93-8/95 .....	19
Table 9 General Assistance, February 1993 -February 1995 .....	20
Graph 9 General Assistance Recipients 2/93 - 2/95 .....	21
Table 10 Child Support and Paternity 1993-1995 .....	22
<b>Explanatory Notes.....</b>	<b>23-24</b>
<b>Supplement</b>	
Table 11 General Assistance Recipients by County and Municipality,February 1995 .....	25

## Highlights of Current Program Statistics

### **AFDC** (Tables 1 and 5, Graphs 1 and 4)

**118,463 eligible families in New Jersey were receiving AFDC as of the end of August 1995:**

- **106,500** single head of household families (Regular AFDC, C segment).
- Among two-parent families, **3500** Unemployed Parent families (F Segment) and **3300** State AFDC families (N Segment).
- **5200** Medicaid Only families.
- The largest numbers of families by county: Essex with **29,900**, Hudson with **18,700**, and Camden County with **13,600**. (52 percent of all AFDC families)
- Other counties ranged from **200** families in Hunterdon to **7,600** in Passaic County.

**There were 700 less eligible families in August 1995 than in July, and more than 6000 below the May/June 1994 peak of 124,600.**

- There were **500** less C segment families in August 1995 than in July, and **5300** less than the peak of **111,800** in June 1994.
- F segment families declined from over **4500** in May 1994 to under **3500** by August 1995.
- State AFDC (N segment) grew from about **2900** families in August 1993 to almost **3500** by June 1994, and declined by more than **200** since.
- Medicaid Only families remained near **5000** over the last two years, increased by more than **300** between February and June of 1995, and declined by about **100** since June.

### **FOOD STAMP PROGRAM** (Tables 2 and 6, Graphs 2, 5, and 6)

**At the end of August 1995, 221,018 households were participating in the Food Stamp Program:**

- **111,400** AFDC households
- **109,600** Other Low Income households.
- **48 percent** were in Essex (**55,144**), Hudson (**29,557**) and Camden (**21,952**) Counties.
- Food Stamp households included about **516,600** persons, **245,100** adults and **271,500** children.
- In seven counties (Bergen, Hunterdon, Monmouth, Morris, Somerset, Sussex, and Warren) the number of adults exceeded the number of children in Food Stamp households.



Food Stamp households in New Jersey remained close to 215,000 families between August 1993 and February 1994, and jumped to about 222,000 families in March 1994. The number has remained between 220,000 and 222,000 since then, except for a peak in March 1995 of almost 225,000.

- The convergence of the numbers of AFDC(FS) households and Other Low Income households continues. There were almost 116,000 AFDC(FS) households in May 1994, and less than 112,000 in July and August 1995, while the average for both 1993 and 1995 was about 113,000. Other Low Income households increased from an average of 100,000 for all of 1993 to 109,000 for the first eight months of 1995.
- Total Recipients declined by 14,000 between March and July of 1995, and the July level of under 516,000 was below those of two years ago. The slight increase in August was the first since March.
- The number of Recipient Adults peaked at 250,000 in March 1995, declined to about 244,000 by July, and increased to over 245,000 in August. This is higher than two years ago when there were about 239,000 recipient adults.
- Recipient Children declined from almost 280,000 in March 1995 to less than 272,000 in July and August. This is about 11,000 less than the peak of almost 283,000 in March 1994 and below the 277,000 level of two years ago.

## **EMERGENCY ASSISTANCE (Table 3, Graph 3)**

At the end of August 1995 6151 eligible AFDC families were receiving Emergency Assistance (EA) in New Jersey.

- 2608 families received Temporary Rental Assistance (TRA)
- 514 motel placements
- 426 emergency shelter placements
- All other AFDC-EA accounted for 2603 families, including either one-time benefits such as back rent, back utilities, security deposits, furnishings, and clothing and food allowance, or shared or transitional housing.
- 1648 families in Essex County received EA, including 1152 provided TRA. Mercer had 859 EA recipient families, Middlesex had 684, and Passaic had 650 (mostly "Other EA"). All other counties had between 14 and 407 EA recipient families with nine under 100.

[Table 7 and Graph 7 showing the EA historical series are currently under revision.]

## **JOBS/FDP PARTICIPATION RATES (Table 8, Graph 8)**

Statewide participation in JOBS/FDP in August 1995 was 22.6 percent, almost unchanged from July and three percent below the high of 25.7 percent in May 1995. Through July the 1995 pattern was similar to 1994, while the lack of change in August 1995 contrasted with the decline of one percent between July and August 1994. An upward shift can be seen in the statewide rate since January 1994.

- Most counties have shown upward movement in participation rates, though rates vary widely. The large counties tend to show small fluctuations, with Essex, Hudson, Ocean, and Passaic having gradual upward movement, and Bergen, Burlington, Mercer, Middlesex, Monmouth and Union having minimal upward movement. Camden, Cape May, and Gloucester, have shown larger fluctuations, also with little upward movement. Atlantic, Cumberland, and Warren have had large fluctuations, but maintained very high participation rates overall. While Sussex and Salem also experienced very high rates, these have not been as sustained. Hunterdon and Somerset jumped to much higher levels in late 1994 or early 1995, but declined in recent months. Morris increased markedly in 1995.
- Participation rates for Camden and Cape May remained below 10 percent in August. Essex reached another new high but remained under 20 percent. Atlantic, Passaic, Somerset, and Warren which were between 30 and 40 percent, while Cumberland and Morris exceeded 50 percent. All other counties were between 20 and 30 percent.

## **GENERAL ASSISTANCE (Table 9, Graph 9)**

For the period February 1993 through February 1995 (the latest available information), the number of GA recipients peaked at about 37,400 in March 1993 and at 38,100 in March 1994. The level remained around 35,000 from September through December 1994. It increased by about 1,000 in January 1995, and dropped again in February to 34,500, the lowest level in two years.

- The number of employable recipients also peaked in March 1993 (25,900) and March 1994 (26,400). The level remained slightly over 23,000 from September through December 1994, increased to over 24,000 in January 1995, and returned to about 23,000 in February.
- Unemployable GA recipients remained between 11,000 and 11,700 from February 1993 through April 1994, and hovered around 12,000 from May through November 1994. Unemployables declined over the next three months to less than 11,300 by February 1995.

## **CHILD SUPPORT AND PATERNITY COLLECTIONS (Table 10)**

Total collections of the Child Support and Paternity Program grew from about \$515 million to more than \$574 million from FY1994 to FY1995, an increase of 11.4 percent. This was on top of an increase of almost 18 percent from FY 1993 to FY 1994.

- Total AFDC/Foster Care collections increased from around \$92 million to about \$95 million, or 3.1 percent.
- Non-AFDC collections grew from \$423 million to almost \$479 million, or 13.2 percent.

New Jersey Department of Human Services  
Division of Family Development

## TABLE 1

### AFDC Program

**NUMBER OF APPLICATIONS AND TERMINATIONS DURING REPORT MONTH, AND  
NUMBER OF ELIGIBLE FAMILIES RECEIVING AFDC AT END OF REPORT MONTH**

**August 1995**

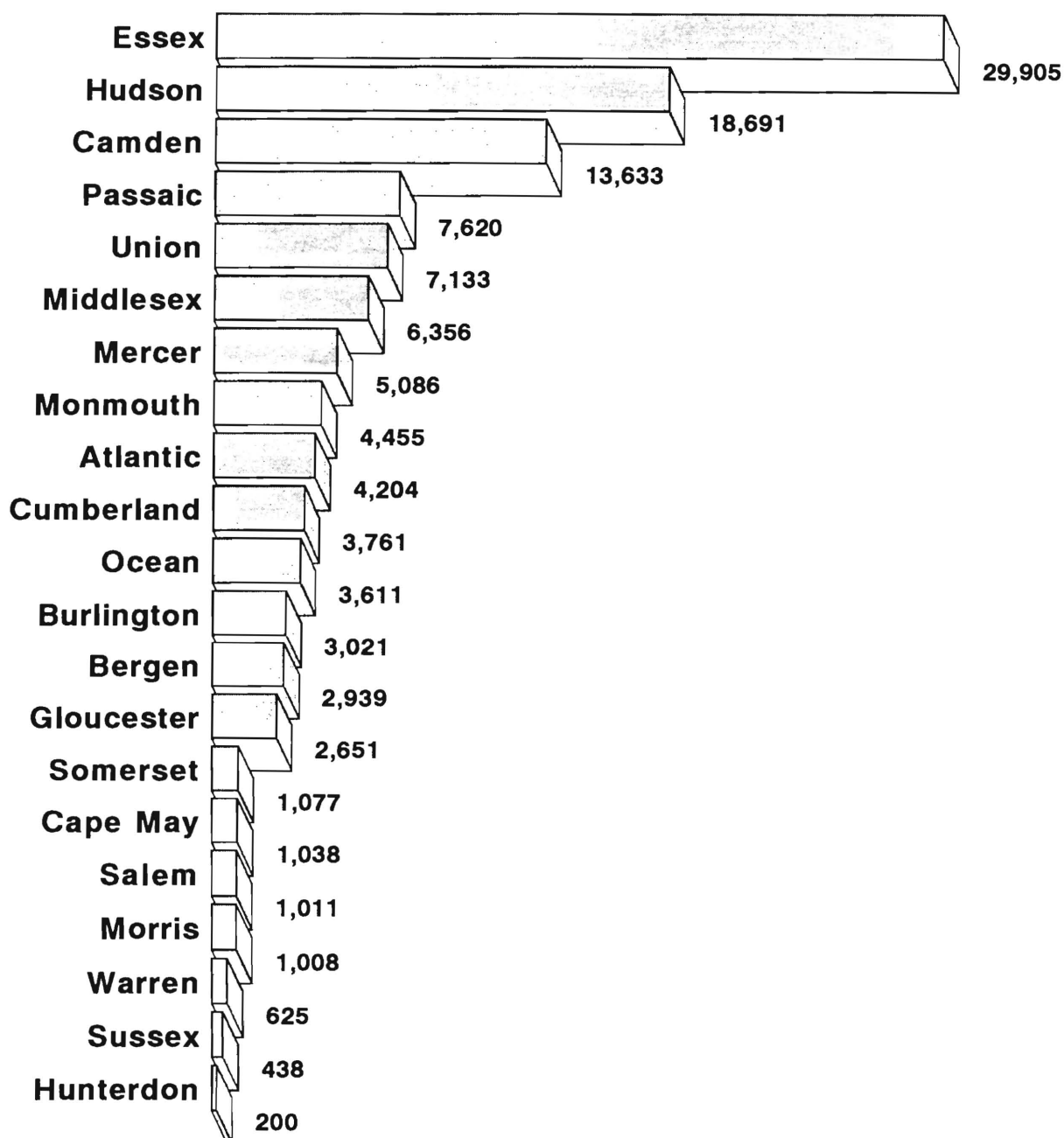
County	Applications Approved	Terminations	Regular AFDC (C Segment)	Unemployed Parents (F)	State AFDC (N)	Medicaid Only	TOTAL AFDC
Atlantic	296	378	3,827	137	86	154	<b>4,204</b>
Bergen	147	145	2,562	164	124	89	<b>2,939</b>
Burlington	209	218	2,641	99	72	209	<b>3,021</b>
Camden	796	745	11,888	590	387	768	<b>13,633</b>
Cape May	75	112	857	57	66	58	<b>1,038</b>
Cumberland	251	333	3,188	166	202	205	<b>3,761</b>
Essex	825	982	28,349	550	255	751	<b>29,905</b>
Gloucester	252	241	2,263	125	90	173	<b>2,651</b>
Hudson	493	620	16,748	356	633	954	<b>18,691</b>
Hunterdon	17	20	165	7	9	19	<b>200</b>
Mercer	419	404	4,609	88	101	288	<b>5,086</b>
Middlesex	371	404	5,259	250	303	544	<b>6,356</b>
Monmouth	205	255	4,097	100	173	85	<b>4,455</b>
Morris	49	76	892	39	31	46	<b>1,008</b>
Ocean	209	257	3,043	180	166	222	<b>3,611</b>
Passaic	315	355	6,996	296	278	50	<b>7,620</b>
Salem	99	148	892	24	26	69	<b>1,011</b>
Somerset	132	137	891	39	29	118	<b>1,077</b>
Sussex	34	52	349	23	12	54	<b>438</b>
Union	320	366	6,439	159	188	347	<b>7,133</b>
Warren	33	46	520	40	29	36	<b>625</b>
<b>NJ TOTAL</b>	<b>5,547</b>	<b>6,294</b>	<b>106,475</b>	<b>3,489</b>	<b>3,260</b>	<b>5,239</b>	<b>118,463</b>

Data Sources: Data is derived from NJ Division of Family Development's FAMIS report # FF-012.

# GRAPH 1

## Current AFDC Families August 1995, By County

---



New Jersey Department of Human Services  
Division of Family Development

## TABLE 2

### FOOD STAMP Program

#### NUMBER OF ATP'S ISSUED TO HOUSEHOLDS, PERSONS, ADULTS AND CHILDREN AT THE END OF THE REPORT MONTH

August 1995

County	HOUSEHOLDS			PERSONS				
	AFDC	Other low income	TOTAL	TOTAL	AFDC	Other low income	Adults	Children
Atlantic	3,981	4,762	8,743	19,333	12,845	6,488	9,461	9,872
Bergen	2,718	5,572	8,290	16,557	8,068	8,489	9,650	6,907
Burlington	2,715	2,948	5,663	13,099	8,249	4,850	6,384	6,715
Camden	12,865	9,087	21,952	55,162	41,953	13,209	24,717	30,445
Cape May	1,018	1,077	2,095	5,398	3,459	1,939	2,520	2,878
Cumberland	3,624	2,620	6,244	16,445	12,179	4,266	7,473	8,972
Essex	29,388	25,756	55,144	128,000	90,880	37,120	59,202	68,798
Gloucester	2,398	1,869	4,267	10,582	7,403	3,179	4,936	5,646
Hudson	17,543	12,014	29,557	71,989	53,499	18,490	32,176	39,813
Hunterdon	162	364	526	1,057	490	567	605	452
Mercer	4,622	4,425	9,047	19,918	14,195	5,723	9,377	10,541
Middlesex	5,721	5,953	11,674	26,331	17,141	9,190	12,996	13,335
Monmouth	4,125	6,252	10,377	22,635	13,037	9,598	11,630	11,005
Morris	850	1,872	2,722	5,486	2,547	2,939	3,157	2,329
Ocean	3,447	4,393	7,840	19,646	11,263	8,383	9,255	10,391
Passaic	7,173	9,371	16,544	38,972	23,704	15,268	18,637	20,335
Salem	966	864	1,830	4,508	3,112	1,396	2,080	2,428
Somerset	1,031	1,820	2,851	5,563	2,924	2,639	3,069	2,494
Sussex	368	667	1,035	2,402	1,128	1,274	1,271	1,131
Union	6,114	6,935	13,049	29,936	19,472	10,464	14,631	15,305
Warren	586	982	1,568	3,599	1,824	1,775	1,883	1,716
NJ TOTAL	111,415	109,603	221,018	516,618	349,372	167,246	245,110	271,508

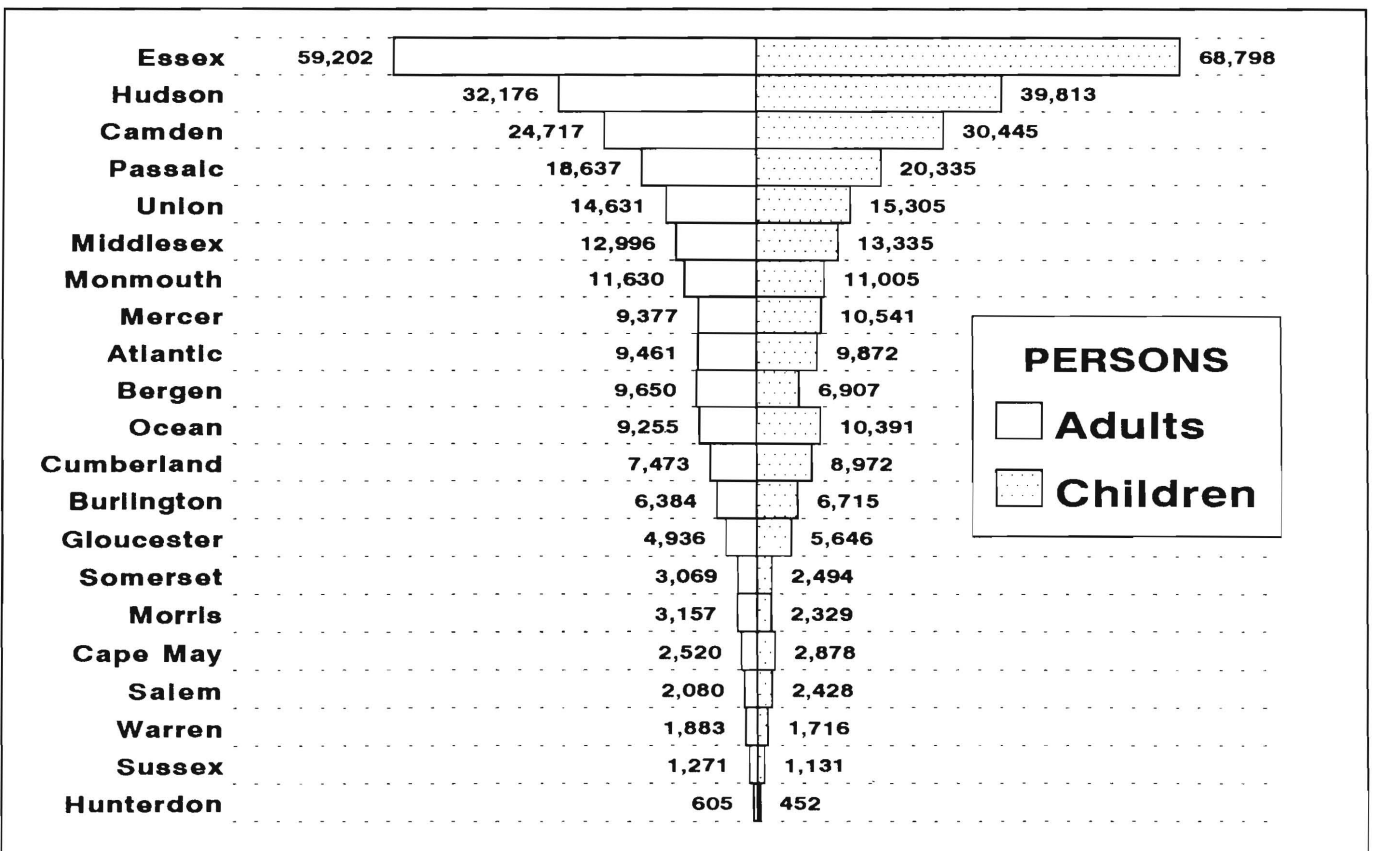
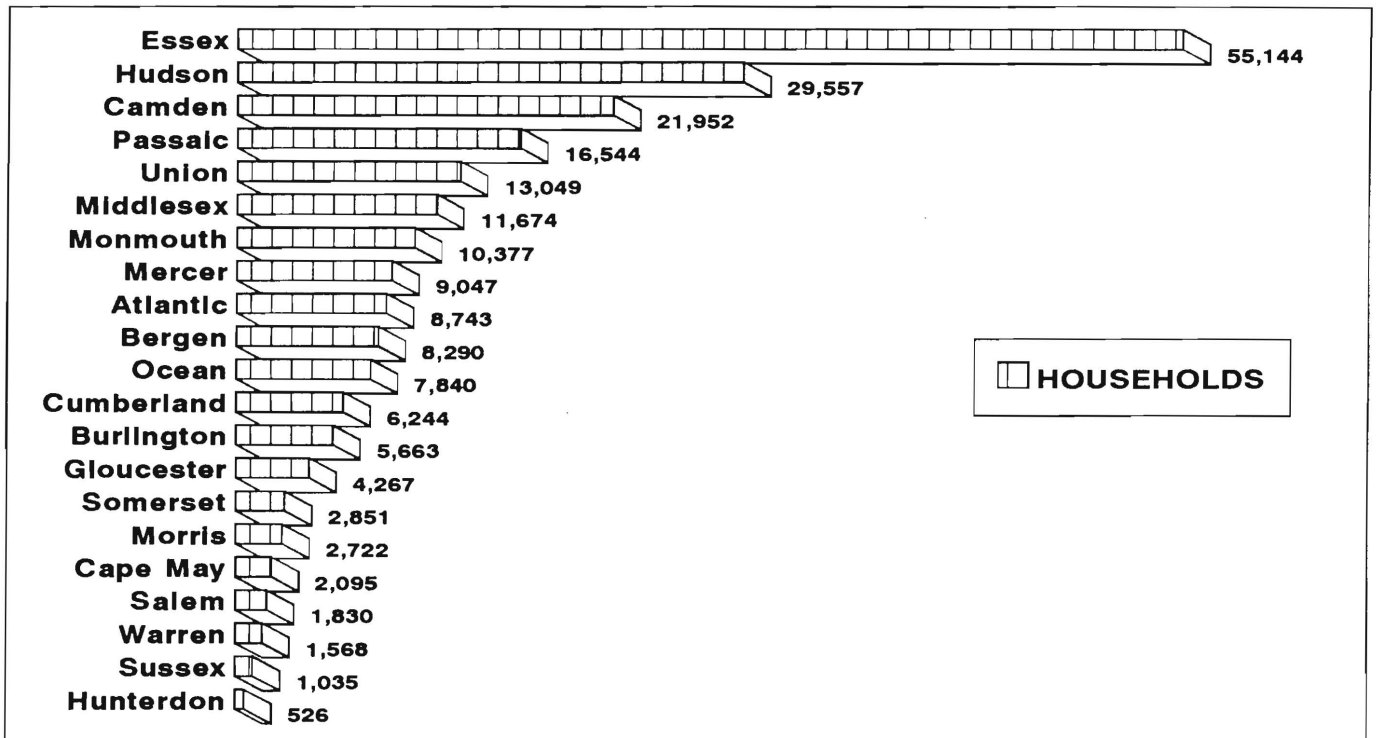
ATP - Authorization to Participate, may include some duplication

Data Sources: Data is derived from NJ Division of Family Development's FAMIS report # FB-160.

## GRAPH 2

# Food Stamp Households

### August 1995, By County



New Jersey Department of Human Services  
Division of Family Development

### **TABLE 3**

## **EMERGENCY ASSISTANCE Program for AFDC recipients**

**NUMBER OF APPLICATIONS AND TERMINATIONS DURING REPORT MONTH,  
AND ELIGIBLE FAMILIES RECEIVING EMERGENCY ASSISTANCE  
AT END OF REPORT MONTH**

**August 1995**

County	Applications Approved	Terminations	Total families receiving EA	Temporary rental assist.	Motel Housing	Emergency Shelter	Other AFDC-EA
Atlantic	210	181	<b>182</b>	54	26	31	71
Bergen	79	75	<b>407</b>	306	35	28	38
Burlington	41	18	<b>65</b>	13	1	38	13
Camden	228	258	<b>287</b>	61	9	28	189
Cape May	17	13	<b>14</b>	1	1	0	12
Cumberland	21	19	<b>20</b>	0	0	16	4
Essex	612	25	<b>1,648</b>	1,152	51	112	333
Gloucester	38	72	<b>93</b>	54	4	31	4
Hudson	74	51	<b>143</b>	29	7	26	81
Hunterdon	2	1	<b>16</b>	9	2	1	4
Mercer	96	210	<b>859</b>	107	54	1	697
Middlesex	120	238	<b>684</b>	412	28	16	228
Monmouth	59	64	<b>283</b>	154	51	3	75
Morris	10	3	<b>21</b>	1	0	10	10
Ocean	102	130	<b>323</b>	171	151	1	0
Passaic	600	510	<b>650</b>	2	19	22	607
Salem	34	2	<b>38</b>	16	10	3	9
Somerset	60	37	<b>138</b>	23	20	25	70
Sussex	17	4	<b>30</b>	4	9	10	7
Union	338	230	<b>221</b>	39	22	19	141
Warren	10	11	<b>29</b>	0	14	5	10
<b>NJ TOTAL</b>	<b>2,768</b>	<b>2,152</b>	<b>6,151</b>	<b>2,608</b>	<b>514</b>	<b>426</b>	<b>2,603</b>

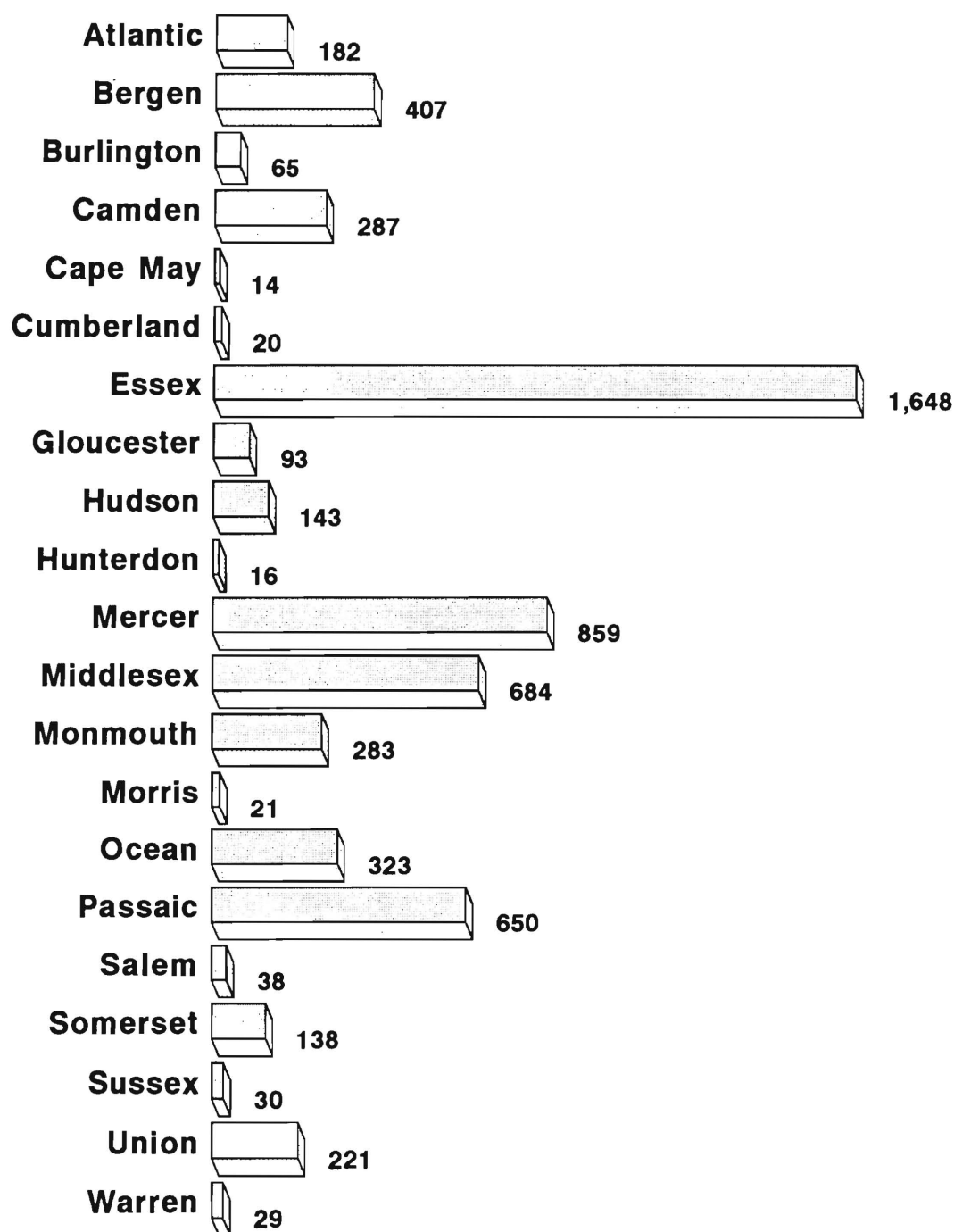
Data Sources: Data is compiled by County Welfare Agencies & reported to the  
NJ Division of Family Development on report form # PA-217.

### GRAPH 3

## Current Families Receiving Emergency Assistance

### August 1995, By County

---





NEW JERSEY DEPARTMENT OF HUMAN SERVICES  
DIVISION OF FAMILY DEVELOPMENT

**TABLE 4**  
**FAMILY DEVELOPMENT PROGRAM**  
**STATISTICAL SUMMARY**

COUNTY	SNAPSHOT OF ACTIVITY AS OF AUGUST 1995				ACTIVITY FOR MONTH OF AUGUST 1995					
	TOTAL NONEXMT JOBS/FDP RECI- PIENTS	EMPLOYMENT DIRECTED ACTIVITIES(1)			PARTIC IN EDAs & REC SUPPORT SERVICES		PARTIC W/ 1st C M INTV	# EMPL THIS MONTH & STILL REC AFDC	# CLSD ON FAMIS RE: EARNGS(2)	POST AFDC & REC CH CARE
		TRAIN- ING	EDUCA- TION	JOB SEARCH	TREs	CHILD CARE				
ATLANTIC	1,637	336	238	81	312	224	129	43	101	140
BERGEN	1,695	185	114	71	199	113	52	13	44	55
BURLINGTON	1,414	315	137	48	336	184	143	53	56	139
CAMDEN	8,076	370	342	48	547	353	329	49	148	247
CAPE MAY	572	24	16	10	17	3	51	23	47	5
CUMBERLAND	1,638	264	270	29	640	274	389	30	74	145
ESSEX	16,826	1,247	1,191	253	1,881	1,222	375	37	120	115
GLOUCESTER	1,169	240	118	36	347	102	75	14	34	70
HUDSON	11,898	940	1,180	76	1,841	961	491	42	160	207
HUNTERDON	111	16	20	4	8	14	11	6	5	7
MERCER	2,926	176	294	79	228	205	124	32	86	121
MIDDLESEX	3,667	412	229	63	388	137	294	41	87	100
MONMOUTH	2,543	242	249	92	387	283	116	40	84	157
MORRIS	448	103	64	45	62	58	74	19	24	21
OCEAN	2,028	324	182	150	172	128	324	62	88	104
PASSAIC	3,897	795	374	52	792	358	220	36	98	136
SALEM	429	59	69	6	82	38	29	8	16	56
SOMERSET	536	71	57	13	60	71	23	15	14	39
SUSSEX	260	25	54	43	26	18	30	8	7	25
UNION	3,828	362	321	101	500	220	267	25	68	109
WARREN	397	36	61	42	12	13	3	14	19	17
STATE	65,995	6,542	5,580	1,342	8,837	4,979	3,549	610	1,380	2,015

(1) – The number of participants receiving support services may occasionally exceed the number actively participating in EDAs. This can result from extended assessment or evaluation activities or, the issuance of bridge payments.

(2) – FAMIS file date 8/19/95

New Jersey Department of Human Services  
Division of Family Development

## **TABLE 5**

### **AFDC Program State Summary**

**NUMBER OF APPLICATIONS AND TERMINATIONS DURING REPORT MONTH,  
AND NUMBER OF ELIGIBLE FAMILIES RECEIVING AFDC AT END OF REPORT MONTH**

**August 1993 through August 1995**

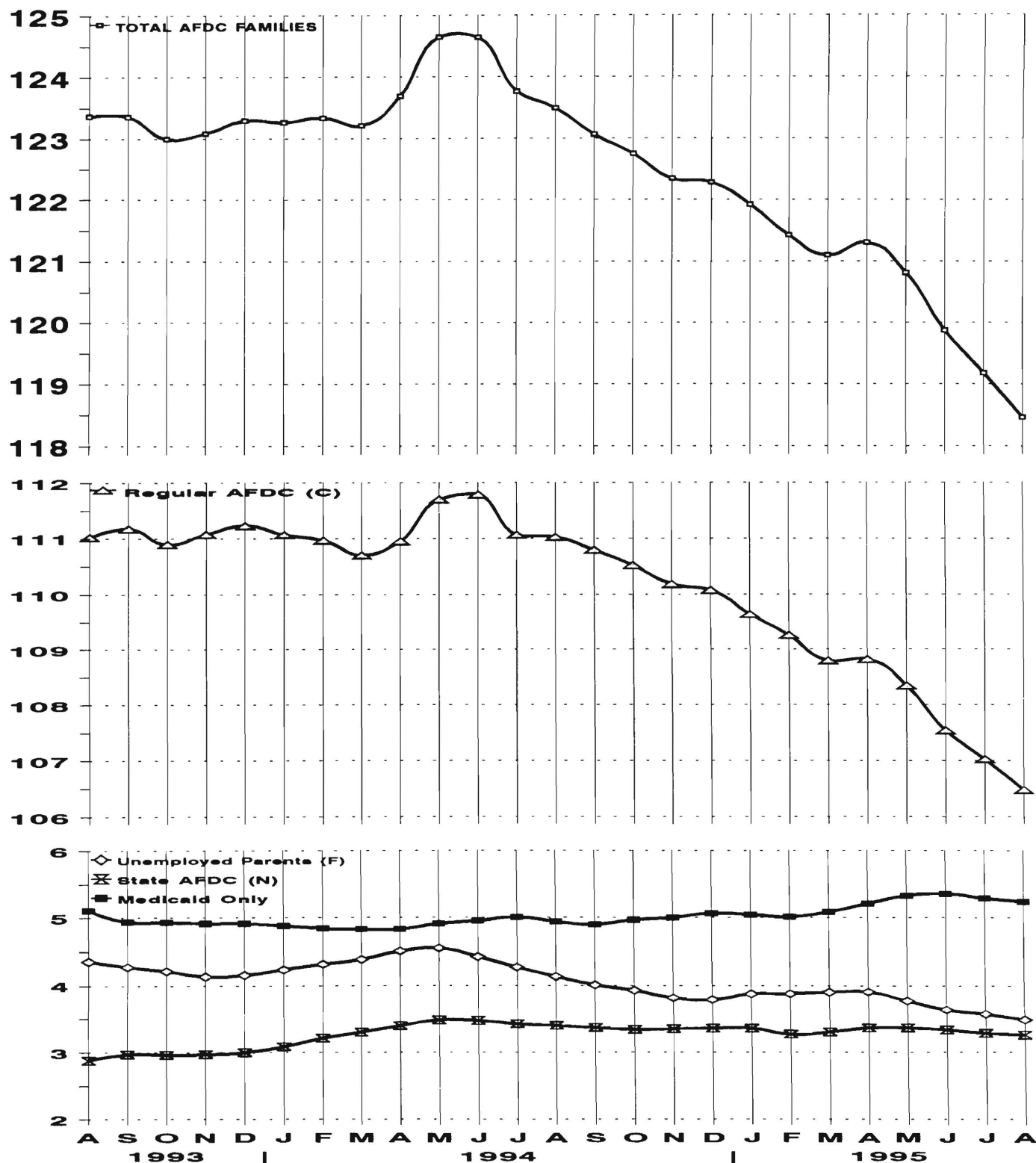
	Applications Approved	Termin- ations	Regular AFDC (C Segment)	Unemployed Parents (F)	State AFDC (N)	Medicaid Only	TOTAL AFDC
1993 Aug	6,103	6,235	111,020	4,355	2,879	5,111	123,365
Sep	5,795	5,857	111,177	4,274	2,969	4,939	123,359
Oct	5,380	5,820	110,893	4,213	2,961	4,934	123,001
Nov	6,774	6,902	111,072	4,131	2,969	4,916	123,088
Dec	5,590	5,462	111,231	4,152	2,997	4,915	123,295
AVERAGE (12 MONTHS)	5,760	5,688	110,942	4,365	2,860	5,012	123,178
1994 Jan	5,452	5,349	111,067	4,232	3,085	4,881	123,265
Feb	5,449	5,518	110,964	4,314	3,214	4,844	123,336
Mar	5,693	5,893	110,699	4,383	3,301	4,831	123,214
Apr	6,284	5,997	110,951	4,506	3,399	4,834	123,690
May	7,094	6,188	111,700	4,549	3,483	4,913	124,645
Jun	5,758	5,742	111,787	4,423	3,477	4,953	124,640
Jul	5,117	5,898	111,064	4,266	3,428	5,007	123,765
Aug	6,435	6,827	111,025	4,128	3,401	4,940	123,494
Sep	6,266	6,754	110,790	4,007	3,369	4,900	123,066
Oct	6,592	6,950	110,517	3,927	3,340	4,966	122,750
Nov	6,344	6,796	110,181	3,814	3,350	5,002	122,347
Dec	5,682	5,890	110,070	3,789	3,360	5,065	122,284
AVERAGE	6,014	6,150	110,901	4,195	3,351	4,928	123,375
1995 Jan	5,583	5,944	109,645	3,875	3,358	5,045	121,923
Feb	5,964	6,515	109,261	3,878	3,270	5,016	121,425
Mar	5,810	6,221	108,800	3,903	3,305	5,088	121,096
Apr	7,096	7,086	108,822	3,907	3,365	5,209	121,303
May	5,288	5,784	108,343	3,773	3,369	5,328	120,813
Jun	5,558	6,458	107,541	3,639	3,336	5,358	119,874
Jul	5,977	6,781	107,028	3,574	3,286	5,293	119,181
Aug	5,547	6,294	106,475	3,489	3,260	5,239	118,463
AVERAGE	5,853	6,385	108,239	3,755	3,319	5,197	120,510

Data Sources: Data is derived from NJ Division of Family Development's FAMIS report # FF-012.

# GRAPH 4

## Eligible Families Receiving AFDC

August 1993 through August 1995  
(Thousands of Families)



New Jersey Department of Human Services  
Division of Family Development

## TABLE 6

### FOOD STAMP Program State Summary

#### NUMBER OF ATP'S ISSUED TO HOUSEHOLDS, PERSONS, ADULTS AND CHILDREN AT THE END OF THE REPORT MONTH

August 1993 through August 1995

	<u>HOUSEHOLDS</u>			<u>TOTAL</u>	<u>PERSONS</u>			
	AFDC	Other low income	TOTAL		AFDC	Other low income	Adults	Children
1993 Aug	113,292	100,947	<b>214,239</b>	<b>516,113</b>	358,109	158,004	238,801	277,312
Sep	113,439	101,341	<b>214,780</b>	<b>516,517</b>	358,261	158,256	239,247	277,270
Oct	113,737	101,753	<b>215,490</b>	<b>517,657</b>	358,804	158,853	239,902	277,755
Nov	114,180	100,295	<b>214,475</b>	<b>519,932</b>	360,125	159,807	241,029	278,903
Dec	114,348	102,790	<b>217,138</b>	<b>521,307</b>	360,858	160,449	241,989	279,318
AVERAGE (12 MONTHS)	113,235	100,374	<b>213,609</b>	<b>515,793</b>	357,762	158,032	238,605	277,188
1994 Jan	113,984	102,590	<b>216,574</b>	<b>519,549</b>	359,422	160,127	241,575	277,974
Feb	113,804	102,843	<b>216,647</b>	<b>519,760</b>	359,227	160,533	241,993	277,767
Mar	115,730	106,160	<b>221,890</b>	<b>530,892</b>	365,132	165,760	248,219	282,673
Apr	115,661	106,454	<b>222,115</b>	<b>530,591</b>	365,241	165,350	248,331	282,260
May	115,874	106,611	<b>222,485</b>	<b>530,595</b>	364,941	165,654	248,420	282,175
Jun	115,737	106,683	<b>222,420</b>	<b>529,514</b>	364,394	165,120	248,099	281,415
Jul	115,172	105,717	<b>220,889</b>	<b>526,075</b>	362,520	163,555	246,142	279,933
Aug	114,809	106,115	<b>220,924</b>	<b>524,659</b>	361,106	163,553	246,052	278,607
Sep	114,177	105,972	<b>220,149</b>	<b>521,945</b>	358,849	163,096	244,835	277,110
Oct	114,039	106,903	<b>220,942</b>	<b>522,406</b>	358,010	164,396	245,676	276,730
Nov	114,251	107,577	<b>221,828</b>	<b>524,090</b>	358,582	165,508	246,659	277,431
Dec	114,232	107,467	<b>221,699</b>	<b>523,825</b>	358,446	165,379	246,517	277,308
AVERAGE	114,789	105,924	<b>220,714</b>	<b>525,325</b>	361,323	164,003	246,043	279,282
1995 Jan	113,691	107,493	<b>221,184</b>	<b>522,125</b>	356,763	165,362	245,837	276,288
Feb	113,830	108,421	<b>222,251</b>	<b>524,344</b>	357,419	166,925	247,107	277,237
Mar	114,339	110,279	<b>224,618</b>	<b>529,456</b>	359,404	170,052	249,994	279,462
Apr	113,588	108,991	<b>222,579</b>	<b>524,102</b>	356,717	167,385	247,367	276,735
May	113,125	109,171	<b>222,296</b>	<b>522,173</b>	355,099	167,074	246,949	275,224
Jun	112,827	109,198	<b>222,025</b>	<b>521,084</b>	354,211	166,873	246,557	274,527
Jul	111,635	107,978	<b>219,613</b>	<b>515,478</b>	350,378	165,100	243,727	271,751
Aug	111,415	109,603	<b>221,018</b>	<b>516,618</b>	349,372	167,246	245,110	271,508
AVERAGE	113,056	108,892	<b>221,948</b>	<b>521,923</b>	354,920	167,002	246,581	275,342

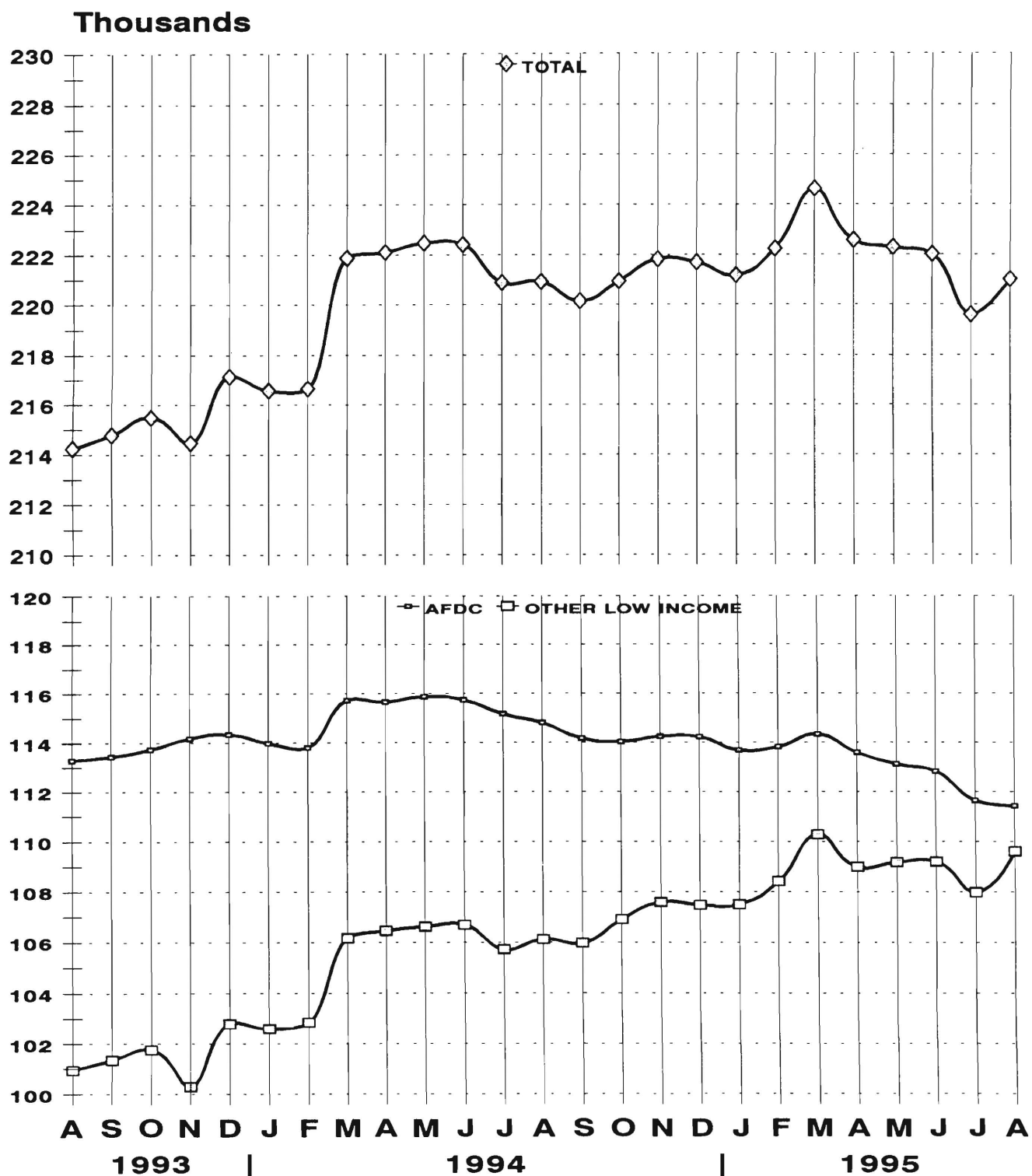
ATP - Authorization to Participate

Data Sources: Data is derived from NJ Division of Family Development's FAMIS report # FB-160.

# GRAPH 5

## Food Stamp Households

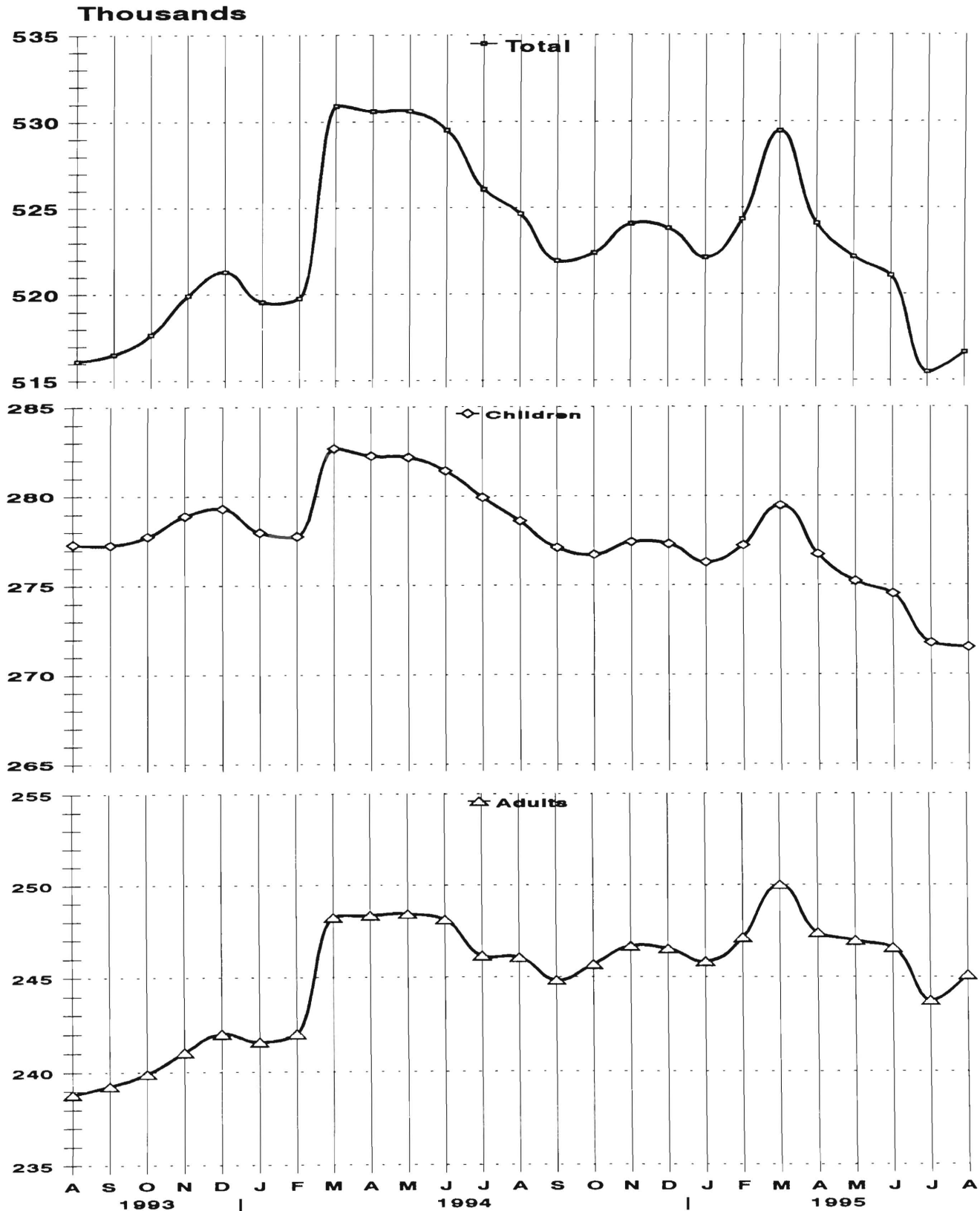
### August 1993 through August 1995



# GRAPH 6

## Food Stamp Recipients

August 1993 through August 1995



New Jersey Department of Human Services  
Division of Family Development**TABLE 7**  
**EMERGENCY ASSISTANCE Program for AFDC recipients**  
**State Summary**

**NUMBER OF APPLICATIONS AND TERMINATIONS DURING REPORT MONTH,  
AND NUMBER OF ELIGIBLE FAMILIES RECEIVING EMERGENCY ASSISTANCE  
AT END OF REPORT MONTH**

**August 1993 through August 1995**

<b>Applications Approved</b>	<b>Terminations</b>	<b>Total families receiving EA</b>	<b>Temporary rental assist.</b>	<b>Motel Housing</b>	<b>Emergency Shelter</b>	<b>Other AFDC-EA</b>
----------------------------------	---------------------	--	-------------------------------------	--------------------------	------------------------------	--------------------------

**CURRENTLY UNDER REVISION**

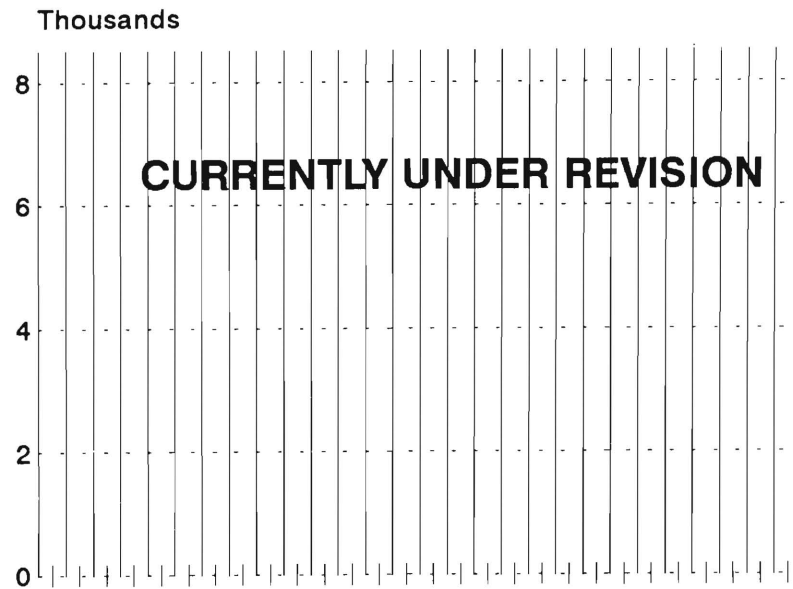
---

**Data Sources:** Data is compiled by County Welfare Agencies & reported to the NJ Division of Family Development on report form # PA-217.

# GRAPH 7

## AFDC Families Receiving Emergency Assistance August 1993 through August 1995

---





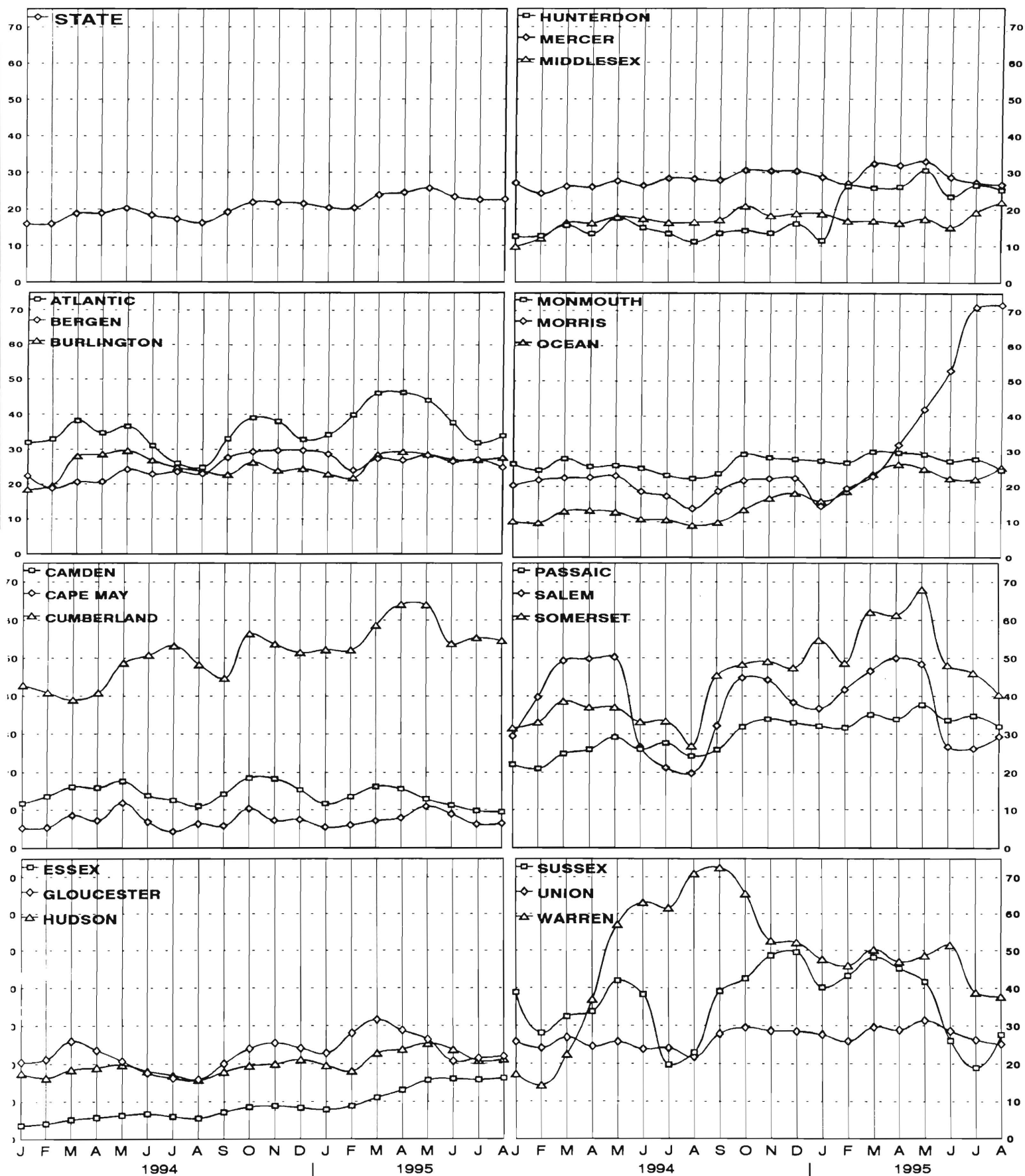
New Jersey Department of Human Services  
Division of Family Development

**TABLE 8**  
**JOBS/FDP PARTICIPATION RATES BY MONTH**  
**(PERCENT)**

COUNTY	JAN 94	FEB 94	MAR 94	APR 94	MAY 94	JUN 94	JUL 94	AUG 94	SEP 94	OCT 94	NOV 94	DEC 94	JAN 95	FEB 95	MAR 95	APR 95	MAY 95	JUN 95	JUL 95	AUG 95
ATLANTIC	32.0	32.9	38.2	34.7	36.6	31.0	26.0	24.8	33.0	39.0	38.0	32.8	34.2	39.8	46.1	46.3	44.0	37.7	31.9	33.9
BERGEN	22.4	18.8	20.6	20.7	24.2	22.9	23.5	23.0	27.6	29.3	29.7	29.7	28.6	23.9	27.3	26.9	28.3	26.5	27.0	24.8
BURLINGTON	18.4	19.6	28.0	28.6	29.6	26.8	24.7	23.7	22.7	26.2	23.9	24.4	22.9	21.8	28.5	29.2	28.6	27.1	26.9	27.7
CAMDEN	11.7	13.6	16.2	16.0	17.6	13.8	12.6	11.1	14.3	18.5	18.3	15.5	11.7	13.6	16.3	15.7	12.9	11.3	9.8	9.5
CAPE MAY	5.2	5.4	8.6	7.2	11.8	6.9	4.4	6.3	5.8	10.4	7.3	7.5	5.5	6.0	7.2	7.9	10.9	9.0	6.3	6.5
CUMBERLAND	39.0	40.9	48.7	50.8	53.2	48.3	44.7	45.1	52.5	56.4	53.7	51.5	52.2	52.1	58.6	64.1	64.0	53.8	55.3	54.6
ESSEX	3.7	4.1	5.2	5.7	6.3	6.7	6.0	5.5	7.2	8.5	8.8	8.3	7.8	8.8	11.0	13.0	15.7	16.0	15.8	16.2
GLOUCESTER	20.4	21.2	26.0	23.6	20.7	17.6	16.2	15.8	20.0	24.0	25.5	24.2	22.8	28.1	31.6	28.7	26.4	20.7	21.5	22.0
HUDSON	17.5	16.3	18.4	19.0	19.7	18.1	17.0	15.7	17.9	19.5	20.0	21.1	19.6	18.1	22.9	23.8	25.4	23.8	20.8	21.2
HUNTERDON	12.5	12.7	15.5	13.3	17.5	15.0	13.3	11.1	13.4	14.2	13.5	16.1	11.5	26.2	25.8	26.1	30.6	23.5	26.6	25.2
MERCER	27.1	24.2	26.2	26.0	27.6	26.4	28.4	28.3	27.9	30.5	30.4	30.4	28.7	27.0	32.5	31.9	33.1	28.7	27.3	26.7
MIDDLESEX	9.8	12.0	16.2	16.2	17.9	17.4	16.3	16.5	17.1	20.8	18.2	18.8	18.8	16.8	16.9	16.3	17.4	15.1	19.2	22.0
MONMOUTH	26.4	24.7	27.9	25.7	26.0	25.2	23.2	22.3	23.7	29.2	28.2	27.8	27.3	26.8	29.9	29.6	29.1	27.2	27.7	24.5
MORRIS	20.3	21.9	22.4	22.6	23.1	18.6	17.3	13.7	18.7	21.7	22.2	22.4	14.4	19.5	22.9	31.9	42.0	52.9	71.0	71.7
OCEAN	10.1	9.7	12.9	13.2	12.7	10.8	10.6	9.0	9.9	13.4	16.7	18.1	15.8	18.6	23.6	26.4	25.0	22.3	22.1	25.4
PASSAIC	22.1	21.0	24.9	26.0	29.2	26.1	27.7	24.3	25.9	31.9	33.9	33.0	32.1	31.7	35.1	33.9	37.7	33.6	34.7	32.0
SALEM	29.5	39.7	49.3	49.8	50.3	26.7	21.2	19.8	32.2	44.8	44.2	38.3	36.7	41.7	46.6	50.0	48.4	26.7	26.3	29.4
SOMERSET	31.6	33.1	38.6	37.0	37.0	33.2	33.4	26.9	45.4	48.3	49.1	47.4	54.7	48.7	62.0	61.3	68.0	48.1	46.1	40.3
SUSSEX	38.9	28.1	32.4	33.7	42.0	38.3	19.7	23.0	39.2	42.6	48.7	49.6	40.2	43.3	48.2	45.3	41.7	26.1	19.0	27.7
UNION	25.9	24.2	26.9	24.6	25.8	23.9	24.2	21.8	27.9	29.5	28.7	28.6	27.7	26.0	29.6	28.9	31.4	28.6	26.3	25.2
WARREN	17.2	14.3	22.5	37.0	57.1	63.0	61.5	71.0	72.5	65.4	52.6	52.2	47.7	46.1	50.3	47.2	48.7	51.5	38.9	37.8
STATE	16.0	16.0	18.8	18.9	20.1	18.3	17.3	16.3	19.1	21.8	21.8	21.5	20.4	20.3	23.8	24.5	25.7	23.3	22.5	22.6

# GRAPH 8

## JOBS/FDP PARTICIPATION RATES (%)



New Jersey Department of Human Services  
Division of Family Development

## TABLE 9

### GENERAL ASSISTANCE Program State Summary

#### NUMBER OF EMPLOYABLE AND UNEMPLOYABLE RECIPIENTS DURING REPORT MONTH

February 1993 through February 1995

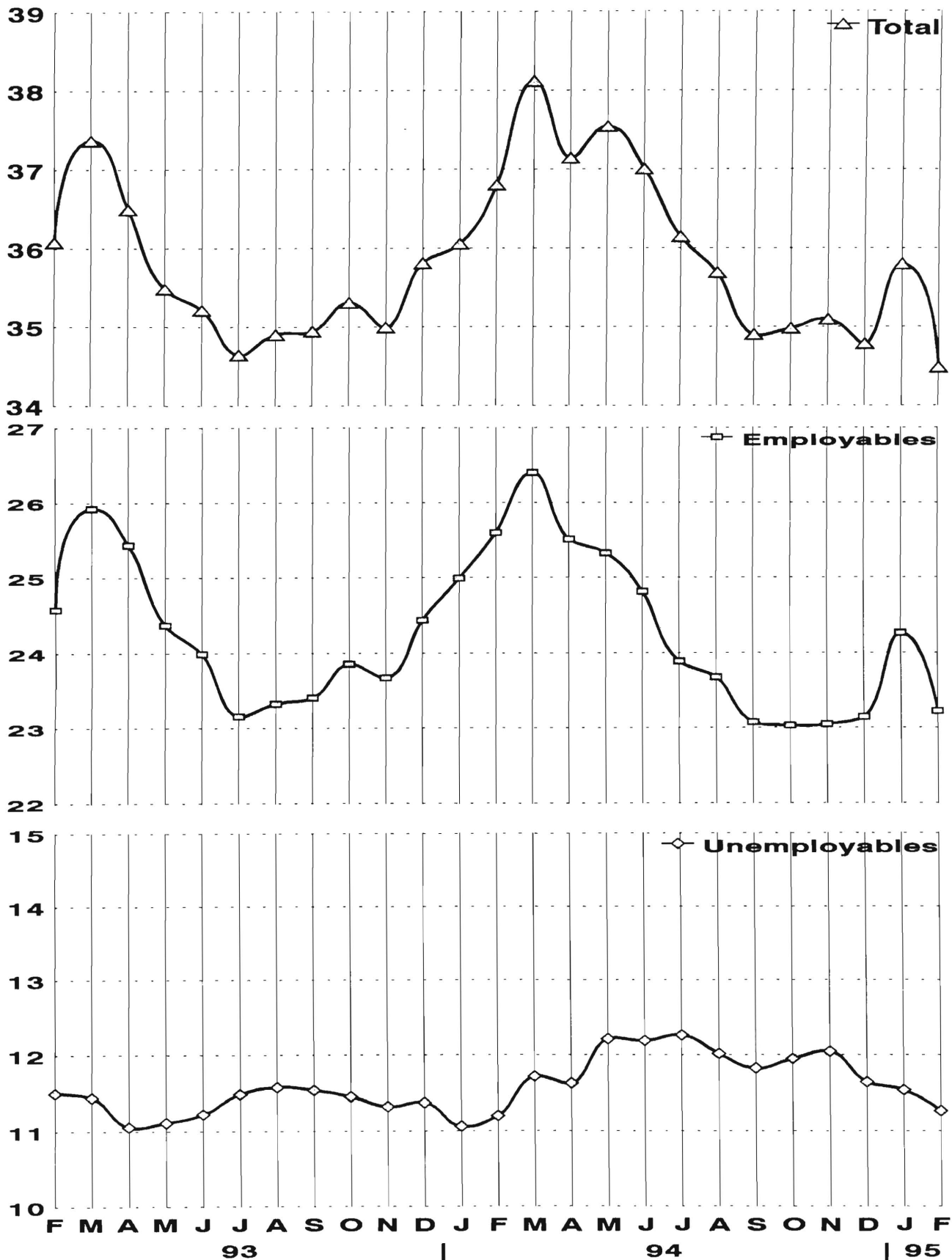
		Number of Persons Aided		
		Employables	Unemployables	Total
1993	Feb	24,576	11,503	36,079
	Mar	25,921	11,445	37,366
	Apr	25,438	11,057	36,495
	May	24,370	11,113	35,483
	Jun	23,989	11,225	35,214
	Jul	23,156	11,488	34,644
	Aug	23,320	11,580	34,900
	Sep	23,402	11,542	34,944
	Oct	23,853	11,455	35,308
	Nov	23,668	11,324	34,992
	Dec	24,435	11,374	35,809
	AVERAGE (12 mos)	24,250	11,374	35,624
1994	Jan	24,992	11,062	36,054
	Feb	25,600	11,202	36,802
	Mar	26,397	11,719	38,116
	Apr	25,512	11,629	37,141
	May	25,327	12,212	37,539
	Jun	24,814	12,190	37,004
	Jul	23,884	12,261	36,145
	Aug	23,671	12,018	35,689
	Sep	23,075	11,825	34,900
	Oct	23,031	11,950	34,981
	Nov	23,046	12,045	35,091
	Dec	23,142	11,642	34,784
	AVERAGE	24,486	11,828	36,315
1995	Jan	24,262	11,537	35,799
	Feb	23,219	11,264	34,483
	AVERAGE	23,741	11,401	35,141

# GRAPH 9

## General Assistance Recipients

February 1993 through February 1995

Thousands



New Jersey Department of Human Services  
Division of Family Development

## **TABLE 10**

### **CHILD SUPPORT AND PATERNITY**

#### **State Summary**

#### **Child Support and Paternity Collections**

\$1000's

COLLECTION SOURCE	Fiscal Years			Percent Change	
	1993	1994	1995	1993-1994	1994-1995
<b>AFDC &amp; FOSTER CARE</b>					
Federal Tax	\$13,139	\$15,255	\$15,664	16.1%	2.7%
State Tax	1,631	1,970	1,762	20.8%	-10.6%
Unempl. Ins. Ben.	7,249	4,975	3,867	-31.4%	-22.3%
Income Withholding	40,928	43,219	45,262	5.6%	4.7%
Other/Own Behalf	19,130	18,138	18,431	-5.2%	1.6%
From Other States	4,370	3,621	3,429	-17.1%	-5.3%
For Other States	5,864	5,269	6,873	-10.1%	30.5%
<b>TOTAL COLLECTION</b>	<b>\$92,311</b>	<b>\$92,447</b>	<b>\$95,289</b>	<b>0.1%</b>	<b>3.1%</b>
<b>NON- AFDC</b>					
Federal Tax	\$4,937	\$6,547	\$6,822	32.6%	4.2%
State Tax	1,459	2,210	2,044	51.4%	-7.5%
Unempl. Ins. Ben.	19,274	15,110	13,338	-21.6%	-11.7%
Income Withholding	158,036	214,405	251,694	35.7%	17.4%
Other/Own Behalf	117,224	144,715	156,899	23.5%	8.4%
From Other States	20,199	19,969	20,835	-1.1%	4.3%
For Other States	24,316	20,015	27,338	-17.7%	36.6%
<b>TOTAL COLLECTION</b>	<b>\$345,445</b>	<b>\$422,970</b>	<b>\$478,969</b>	<b>22.4%</b>	<b>13.2%</b>
<b>TOTAL</b>					
Federal Tax	\$18,076	\$21,802	\$22,486	20.6%	3.1%
State Tax	3,090	4,179	3,806	35.3%	-8.9%
Unempl. Ins. Ben.	26,523	20,085	17,205	-24.3%	-14.3%
Income Withholding	198,965	257,624	296,957	29.5%	15.3%
Other/Own Behalf	136,354	162,853	175,329	19.4%	7.7%
From Other States	24,568	23,590	24,264	-4.0%	2.9%
For Other States	30,180	25,284	34,211	-16.2%	35.3%
<b>TOTAL COLLECTION</b>	<b>\$437,756</b>	<b>\$515,417</b>	<b>\$574,258</b>	<b>17.7%</b>	<b>11.4%</b>

Collection Source: Reflects Collections Recorded by County Probation Departments

### Explanatory Notes

The Department of Human Services Division of Family Development provides basic income and an opportunity to achieve self-sufficiency for individuals and families served by the Division's programs. The Division provides leadership, direction and supervision to those public agencies responsible for administering those programs and plans for and develops policies to promote self-sufficiency.

**AID TO FAMILIES WITH DEPENDENT CHILDREN (AFDC)** - Financial assistance for dependent children and their natural or adoptive parents, or certain other relatives recognized as taking the place of a parent.

**Regular AFDC (C Segment)** - assistance when only one parent is in the home due to death or absence, or both parents are in the home but at least one is incapacitated.

**Unemployed Parents (F Segment)** - assistance when both parents are in the home, neither is incapacitated and the primary wage earner meets the federally defined criteria for unemployment.

**State AFDC (N Segment)** - assistance when both parents are in the home, neither is incapacitated, and the primary wage earner does not meet the federal definition of unemployment.

**Medicaid Only** - families no longer receiving AFDC financial assistance but remaining eligible for Medicaid under applicable provisions which extend coverage beyond period of AFDC assistance.

**FOOD STAMP PROGRAM (FS)** - Authorized by Congress as a nutritional supplement program to provide low income households with more food of greater variety and better nutrition. Program eligibility is based on household income, resources, and expenses for medical, shelter, and dependent care. CWA staff refer certain recipients to the New Jersey Department of Labor for participation in the Food Stamp Employment and Training Program.

**EMERGENCY ASSISTANCE (EA)** - Payments to those eligible for AFDC (also for General Assistance or Supplemental Security Income, not included here), authorized during the 30 consecutive days immediately following the emergency (defined as a substantial loss of shelter, food, clothing, or household furnishings by fire, flood or other similar disaster) or if the eligible individual or family is in an imminent or actual state of homelessness.

## **JOBS/FDP**

**JOB OPPORTUNITY AND BASIC SKILLS PROGRAM (JOBS)** - Federally mandated work/training program for recipients of AFDC established by the Family Support Act of 1988 under Part F of Title IV of the Social Security Act.

**FAMILY DEVELOPMENT PROGRAM (FDP)** - Reform legislation enacted by the State Legislature in January 1992 to: build, strengthen, and support the family unit; encourage family formation; reduce the long-term aspects of welfare dependency; look to the needs of the family unit as a whole; emphasize education and training for all family members; maximize use of educational, training and employment resources; and develop genuine private sector job opportunities.

**SNAPSHOT OF ACTIVITY AT POINT IN TIME** - Status of activities as of the end of the month:

**Total Non-Exempt JOBS/FDP Recipients** - Calculation of the number of mandatory IV-F individuals (FAMIS report # FB304).

**Employment Directed Activities (EDA)** - From Activities Summary Report (OMEGA report # RM064). Unduplicated count of persons participating in **Training, Education, or Job Search**.

**Participants in EDA, Receiving Support Services** - From Issuance Disbursement Summary (OMEGA report # RM703). Total number of active participants who show receipt of **Training Related Expenses** or **Child Care**.

**Participation Rate (JOBS/FDP)** - Federally mandated calculation method, dividing the number of participants whose combined and averaged weekly hours of participation in qualifying activities equals or exceeds 20 hours per week by the total number of non-exempt IV-F recipients. As of the end of the month.

**ACTIVITY FOR THE MONTH** - Number of participants with the indicated activity during the month:

**Participants with First Case Management Interview** - From Activities Summary Report (OMEGA report # RM064).

**Number of Persons Employed This Month, Still Receiving AFDC** - From Activities Summary Report (OMEGA report # RM064).

**Number of Persons Closed on FAMIS Due to Earnings** - From FAMIS report # FM463.

**Post AFDC and Receiving Child Care** - Persons no longer in receipt of AFDC, but still receiving child care. From Issuance Disbursement Summary (OMEGA report # RM703).

New Jersey Department of Human Services  
Division of Family Development

## **TABLE 11**

### **GENERAL ASSISTANCE Program**

NUMBER OF EMPLOYABLE AND UNEMPLOYABLE RECIPIENTS DURING REPORT MONTH  
COUNTIES AND 21 LARGEST MUNICIPALITIES

**February 1995**

County	Employables	Unemployables	Total	Municipality	Employables	Unemployables	Total
ATLANTIC	1,349	561	1,910	Atlantic City	1,066	311	1,377
BERGEN	511	552	1,063	Mount Holly	218	85	303
BURLINGTON	685	421	1,106	Camden	2,114	743	2,857
CAMDEN	2,578	1,163	3,741	Vineland	193	111	304
CAPE MAY	241	135	376	East Orange	557	445	1,002
CUMBERLAND	378	229	607	Irvington	223	122	345
ESSEX	7,272	2,049	9,321	Montclair	200	117	317
GLOUCESTER	189	179	368	Newark	5,725	1,116	6,841
HUDSON	1,017	1,091	2,108	Orange	430	48	478
HUNTERDON	58	60	118	Bayonne	46	64	110
MERCER	1,959	723	2,682	Hoboken	159	116	275
MIDDLESEX	691	595	1,286	Jersey City	608	535	1,143
MONMOUTH	1,056	807	1,863	Trenton	1,820	619	2,439
MORRIS	174	233	407	Perth Amboy	185	121	306
OCEAN	905	549	1,454	Asbury Park	269	96	365
PASSAIC	2,054	607	2,661	Long Branch	286	100	386
SALEM	205	95	300	Lakewood	383	124	507
SOMERSET	108	137	245	Passaic	616	268	884
SUSSEX	80	74	154	Paterson	1,303	167	1,470
UNION	1,640	922	2,562	Elizabeth	1,052	505	1,557
WARREN	69	82	151	Plainfield	219	99	318
NJ TOTAL				TOTAL	17,672	5,912	23,584