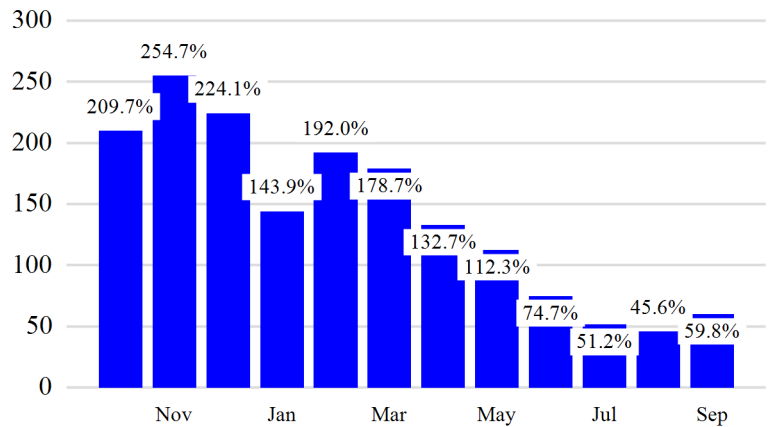


Revenue Passengers

	Curr Month	% Change
	11,173,402	59.8% ▲
Domestic	7,532,528	48.4%
International	3,640,874	89.7%
Non-Revenue	290,828	46.7%

Load Factors	Curr Month	Avg Load Factor
Domestic	81.0%	81.4% Avg Load Factor
International	82.0%	

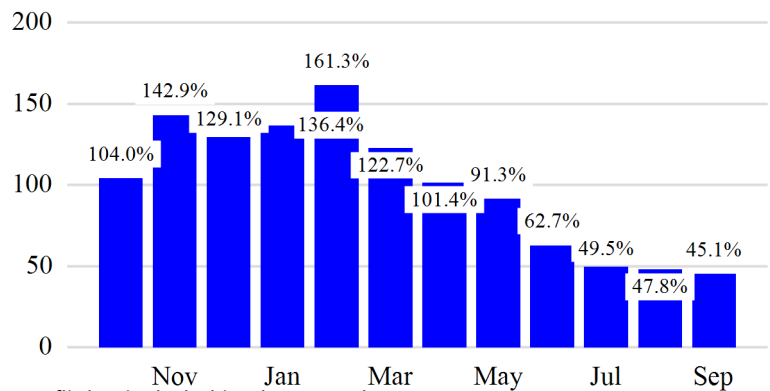
Year over Year % Change in Revenue Passengers - 12 Months



Total Flights

	Curr Month	% Change
	101,126	41.9% ▲
Excl GA	97,284	45.1% ▲
Domestic	75,818	49.2%
International	21,466	32.3%
Gen Aviation	3,842	-9.5%
Cargo Flights*	3,204	-18.9%

Year over Year % Change in Total Flights (Excl GA) - 12 Months

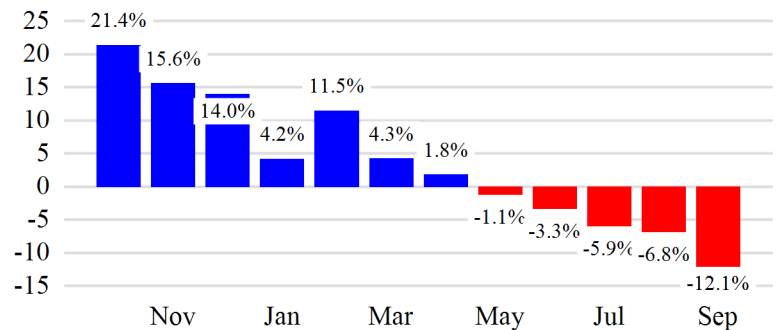


* Cargo flights included in above totals

Cargo (Short Tons)

	Curr Month	% Change
	187,275	-12.1% ▼
Domestic	81,351	-14.2%
International	105,924	-10.4%
Mail	11,433	22.3%

Year over Year % Change in Cargo - 12 Months



Top 5 Declines in Revenue Passengers by Airline

Airline	Pax Decline	% Decline
FRONTIER AIRLINES	(39,199)	-51.0%
COPA AIRLINES	(8,137)	-24.0%
CHINA EASTERN	(2,069)	-58.0%
AEROMEXICO	(1,040)	-4.0%
Avianca El Salvador	(323)	-2.0%

Top 5 Increases in Revenue Passengers by Airline

Airline	Pax Increase	% Increase
UNITED	822,449	48.0%
DELTA	800,590	45.0%
AMERICAN	672,997	76.0%
JETBLUE AIRWAYS	510,907	40.0%
SOUTHWEST AIRLINES	124,704	84.0%

Airport Summary Statistics

JFK Summary

	Current Month	YoY %
Total Revenue Pax	4,961,303	68.0
Total Flights Including GA	37,534	40.0
Total Cargo (Short Tons)	124,474	-11.9

EWR Summary

	Current Month	YoY %
Total Revenue Pax	3,590,839	41.0
Total Flights Including GA	30,859	25.0
Total Cargo (Short Tons)	60,065	-10.1

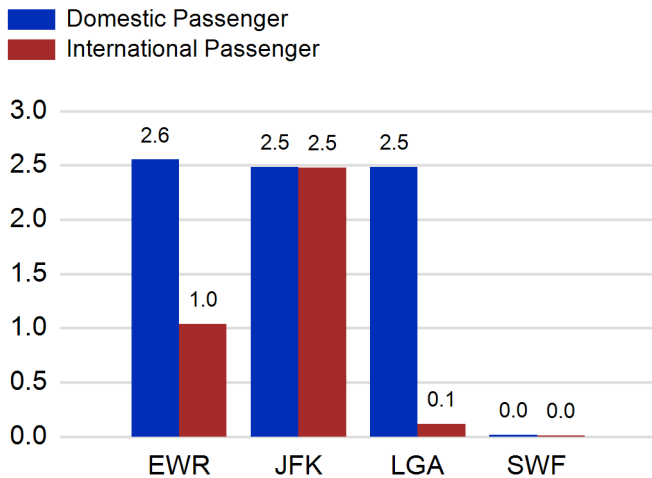
LGA Summary

	Current Month	YoY %
Total Revenue Pax	2,598,002	72.0
Total Flights Including GA	30,081	78.0
Total Cargo (Short Tons)	542	-11.5

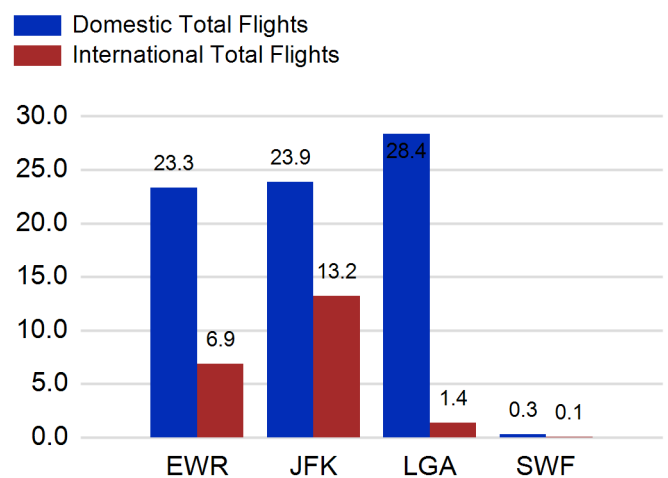
SWF Summary

	Current Month	YoY %
Total Revenue Pax	23,258	180.0
Total Flights Including GA	2,652	-13.0
Total Cargo (Short Tons)	2,194	-48.8

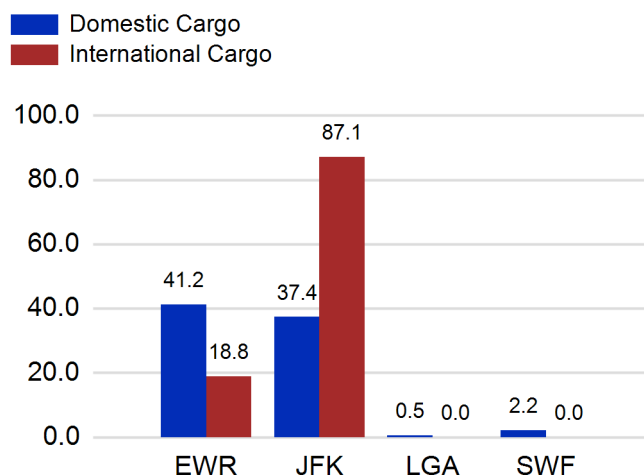
Total Passengers by Airport (Millions)



Total Flights by Airport (Thousands)



Total Cargo by Airport (Thousands of Short Tons)



12 Months Ending Passenger & Freight Statistics

Top 20 Airlines Ranking by Passengers & Freight: 12 Months Ending Sep 2022

Airline Name	Domestic	International	Total Pax	% of Tot	Airline Name	Short Tons	% of Tot
UNITED	23,143,672	6,842,517	29,986,189	24.93%	FEDERAL EXPRESS	421,236	17.74%
DELTA	22,851,067	4,260,537	27,111,604	22.54%	UNITED PARCEL	211,902	8.92%
JETBLUE AIRWAYS	14,671,051	5,428,988	20,100,039	16.71%	United	207,346	8.73%
AMERICAN	14,042,883	2,820,242	16,863,125	14.02%	DELTA	100,755	4.24%
SPIRIT AIRLINES	3,795,550	0	3,795,550	3.16%	AMERICAN	95,771	4.03%
SOUTHWEST AIRLINES	2,732,050	0	2,732,050	2.27%	KALITTA AIR LLC	86,026	3.62%
ALASKA AIRLINES	2,135,558	0	2,135,558	1.78%	ATLAS AIR	66,057	2.78%
AIR CANADA	0	1,009,494	1,009,494	0.84%	CARGOLUX AIRLINES	60,791	2.56%
BRITISH AIRWAYS	0	997,510	997,510	0.83%	ABX AIR INC	59,484	2.50%
EMIRATES AIRLINES	0	908,830	908,830	0.76%	KOREAN	58,793	2.48%
AIR FRANCE	0	902,007	902,007	0.75%	AIR TRANSPORT INT'L.(BAX Inc.)	55,127	2.32%
FRONTIER AIRLINES	674,190	23,617	697,807	0.58%	CHINA AIRLINES (CAL)	48,397	2.04%
TURKISH AIR	0	695,171	695,171	0.58%	TURKISH AIR	44,017	1.85%
VIRGIN ATLANTIC	0	693,119	693,119	0.58%	BRITISH AIRWAYS	41,121	1.73%
LUFTHANSA	0	693,055	693,055	0.58%	VIRGIN ATLANTIC	34,338	1.45%
Avianca Cargo	0	629,652	629,652	0.52%	EVA	34,324	1.45%
AER LINGUS	0	516,425	516,425	0.43%	LUFTHANSA CARGO	33,701	1.42%
EL AL	0	449,116	449,116	0.37%	CATHAY PACIFIC	32,635	1.37%
QATAR AIRWAYS	0	444,011	444,011	0.37%	AIR FRANCE	31,811	1.34%
LAN AIRLINES	0	436,872	436,872	0.36%	EUROPEAN AIR TRANSPORT	27,522	1.16%

Passengers & Freight by Market - 12 Months Ending

Market	Passengers	Freight (Short Tons)
TRANSATLANTIC	19,504,707	933,795
CANADA	2,035,849	963
CARIBBEAN + BERMUDA	7,313,225	14,632
CENTRAL AND SOUTH AMERICA	3,819,139	62,964
DOMESTIC	82,292,432	1,002,839
MEXICO	2,157,973	12,795
TRANSPACIFIC	869,370	338,056
PUERTO RICO	2,290,525	8,607

Additional Data

Airline Schedules (ADI): Non-Stop Destinations

	Region	Flights (Daily)	Cities
Domestic	Domestic	2420.6	114
	Puerto Rico	28.2	3
	Total	2,448.8	117.00
International	Canada	136.2	7
	Caribbean & Bermuda	118.8	22
	Central & South America	60.3	16
	Mexico	38.4	5
	Trans-Atlantic	339.0	63
	Trans-Pacific	22.6	8
	Total	715.2	121.00
Total	3,164.0	238.00	

Airline Schedules (ADI): Carriers & Aircraft Type

	Aircraft Type	Flights (Daily)	Carriers
Domestic	Commuter	947.1	4
	General Aviation	2.0	1
	Narrow Body	1433.0	10
	Wide Body	66.6	4
	Total	2,448.8	19.00
International	Commuter	104.2	5
	Narrow Body	270.6	22
	Wide Body	340.5	55
	Total	715.2	82.00
Total	Total	3,164.0	101.00

Passenger Demographics (ACI ASQ Surveys - 2021)

Connect		Trip Type		Gender	
Local Origin/Destination	78.6%	Business	14.0%	M	49.6%
Connecting	21.4%	Leisure	86.0%	F	50.4%
Transport Mode		Annual Flights		Residency	
Bus/Shuttle	4.7%	1-2	61.5%	United States	81.0%
Other	18.7%	3-5	24.9%	Other	19.0%
Private/Company Car	37.5%	6-10	9.0%		
Rail/Subway	7.3%	11-20	2.8%		
Rental Car	4.6%	21+	1.8%		
Taxi/Limo	27.2%				

Ground Transportation

	Curr Month	% Change		Curr Month	% Change
<i>Paid Parked Cars</i>	364,670	14.4	<i>Total Air Train Passengers</i>	2,382,889	49.1
<i>GTC Bookings</i>	0		<i>Paid Howard Beach Passengers</i>	137,274	70.6
<i>Airport Coach Passengers</i>	33,188	86.9	<i>Paid Jamaica Passengers</i>	511,255	72.7
<i>Taxis Dispatched</i>	378,772	46.0	<i>Paid EWR Passengers</i>	214,618	57.0
			<i>On-Airport (Unpaid) Passengers</i>	1,519,742	40.1

Airlines for American Carriers (USA)

	Curr Month	% Change
<i>Freight:revenue ton miles (000)</i>	0	

Regional Airports: Other

	Curr Month	% Change
<i>TEB flight movements</i>	14,065	16.2
<i>ISP Total passengers</i>	74,275	-21.3
<i>HPN Total passengers</i>	149,950	135.0