

974.965

P 984



Cabinet members

File

State of New Jersey

PROPERTY OF
NEW JERSEY STATE LIBRARY

**DEPARTMENT OF PUBLIC UTILITIES
BOARD OF
PUBLIC UTILITY COMMISSIONERS
101 COMMERCE STREET
NEWARK 2**

OCT 4 - 1966

185 W. State Street
Trenton, N. J.

To: Honorable Richard J. Hughes, Governor
From: Board of Public Utility Commissioners
Subject: Monthly Report - March, 1964

I am pleased to submit the Board's monthly report which is here summarized.

Rate increases, generally lower than requested, were granted to the City of Trenton, Hamilton Square Water Company, Green-Fields Water Co., and the Railway Express Company.

Jersey Central Power & Light Company will, with Board approval, exercise eminent domain powers to extend service in the Middlesex and Monmouth County areas.

Water and sewerage facilities will be placed in areas forbidden to them by local ordinances since the public interest made it necessary for the Board to exercise its statutory authority and approve the prohibited installations.

A new grade crossing will be constructed in Milltown, Middlesex County, over the Raritan River Railroad and protective devices will be improved at a grade crossing over the track of the Central Railroad in the Boroughs of New Shrewsbury and Eatontown, Monmouth County.

William F. Hyland
William F. Hyland,
President

Attachment

WFH:mdk

NEW JERSEY



TERCENTENARY

1664 • 1964



State of New Jersey
DEPARTMENT OF PUBLIC UTILITIES
BOARD OF PUBLIC UTILITY COMMISSIONERS

To: Honorable Richard J. Hughes, Governor
From: Board of Public Utility Commissioners
Subject: Monthly Report - March, 1964

I am pleased to submit the Board's monthly report which is here summarized.

Rate increases, generally lower than requested, were granted to the City of Trenton, Hamilton Square Water Company, Green-Fields Water Co., and the Railway Express Company.

Jersey Central Power & Light Company will, with Board approval, exercise eminent domain powers to extend service in the Middlesex and Monmouth County areas.

Water and sewerage facilities will be placed in areas forbidden to them by local ordinances since the public interest made it necessary for the Board to exercise its statutory authority and approve the prohibited installations.

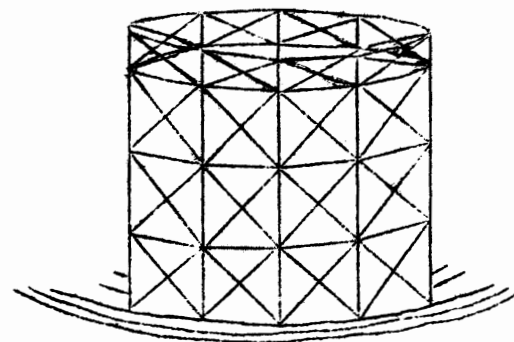
A new grade crossing will be constructed in Milltown, Middlesex County, over the Raritan River Railroad and protective devices will be improved at a grade crossing over the track of the Central Railroad in the Boroughs of New Shrewsbury and Eatontown, Monmouth County.

William F. Hyland
William F. Hyland,
President

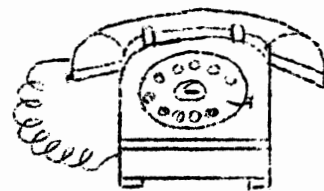
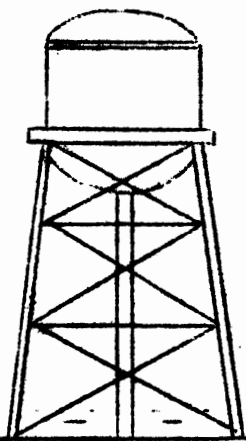
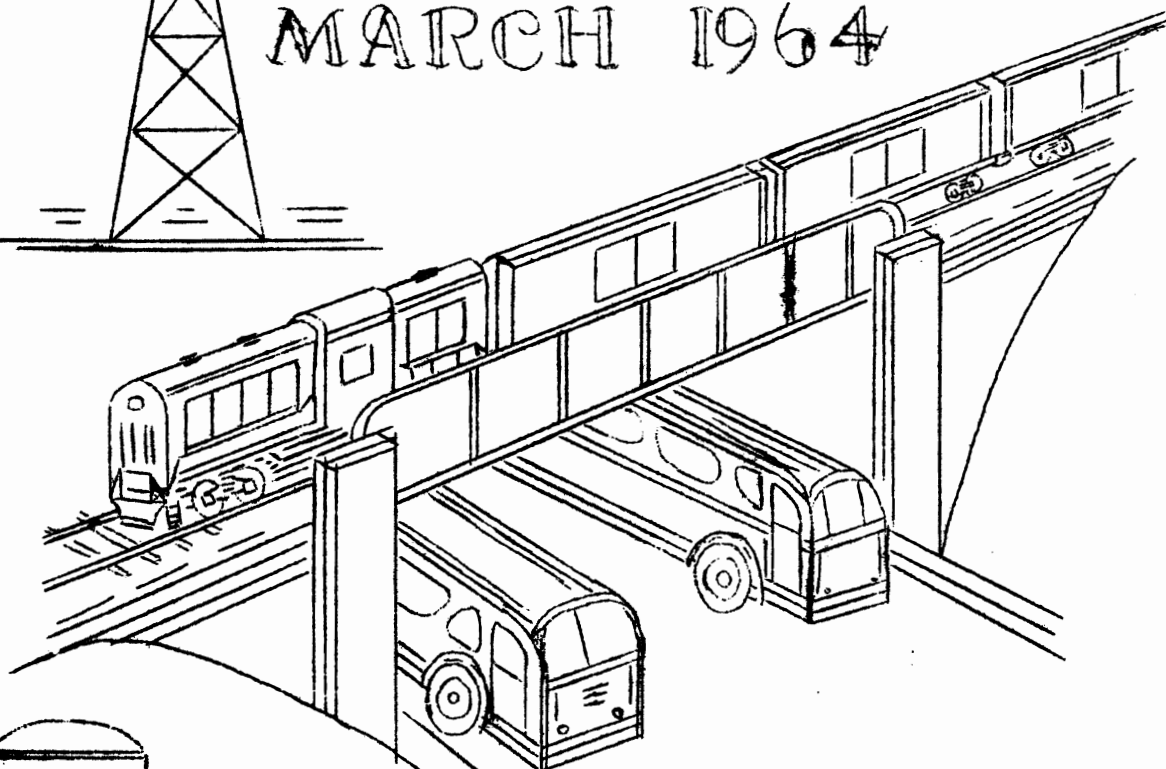
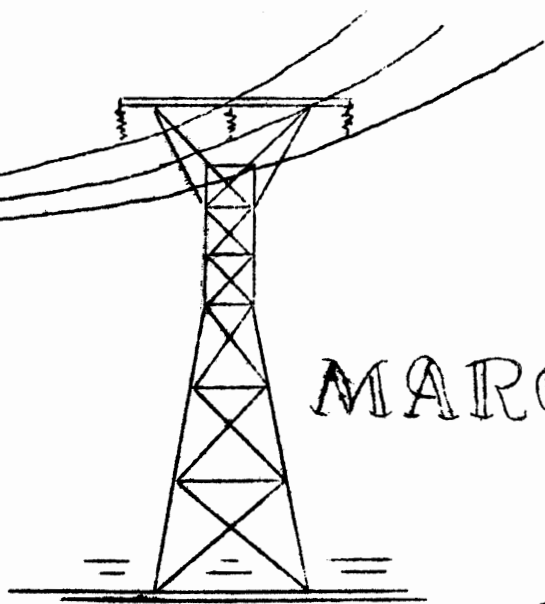
Attachment

WPH:mdk

MONTHLY REPORT



MARCH 1964



NEW JERSEY
BOARD OF PUBLIC UTILITY COMMISSIONERS

REPORT TO GOVERNOR RICHARD J. HUGHES
FOR THE MONTH OF MARCH, 1964

ACTIVITIES

| | |
|----------------------|-------|
| Decisions Issued | 53 |
| Petitions Filed | 111 |
| Formal Hearings | 47 |
| Informal Proceedings | 2,928 |

| <u>REVENUES</u> | <u>1963</u> | <u>1964</u> |
|---|--------------|--------------|
| Filing Fees and Other Sources for the Month of March | \$ 17,733.22 | \$ 29,166.11 |
| Filing Fees and Other Sources for the Months of July-March | \$127,886.44 | \$173,590.60 |

PSCT BUS STRIKE

On March 9th, the operating and mechanical employees struck PSCT after a breakdown of negotiations between labor and management. Service was not resumed until March 25, 1964.

During the period of the strike certificates of inspection on approximately 200 PSCT buses had expired and because all these buses were needed on March 25th, inspectors from the Board's Motor Carrier Division were assigned to the various company garages on midnight, March 24-25 to renew the certificates. As time would not permit a full maintenance inspection of all of the equipment to meet the early A.M. service on March 25, the certificates were extended for a one-week period to April 2nd. However, all these buses were inspected as to brakes, steering, lights, tires, and air systems before being allowed on the road.

WATER RATES

TRENTON WATER WORKS

To permit the financing of a \$2,881,400 construction program and to meet operating costs, the Board permitted the City of Trenton to raise rates by 20% to users of water in Hamilton, Ewing, and Lawrence Townships. Additional annual revenues will approximate \$211,000. New rates begin on April 1, 1964.

HAMILTON SQUARE WATER COMPANY

While the company sought a rate increase of some \$40,000 a year, the Board found a 6.2% rate of return, an increase of \$11,710 in annual revenues, to be reasonable. The new rates will go into effect April 1, 1964, conditioned on completion of a capital additions program (\$174,390) by July 1, 1964. Refunds of the increase will be made if the condition is not met.

GREEN-FIELDS WATER CO.

On the Board's finding of a rate base, the utility's proposed increased rates (\$19,470) would have brought a 10.6% rate of return. The Board, however, found a 6.2% return reasonable, to produce an increase of \$11,570 in annual operating revenues, effective April 1, 1964.

INCREASED RAILWAY EXPRESS CHARGES

The Railway Express Agency, with nation-wide services doing terminal operations that include pickup and delivery service of small package freight handled mainly over railroad lines, sought and was granted a ~~25%~~ increase for less than carload shipments of one or more packages between points in New Jersey. The previous average charge was \$3.64 a shipment and with the increase, \$3.89.

The aim of the petitioner was to reduce the deficit of the intra-state operation by \$44,307.85 from \$113,719.49 to \$69,411.64. The increased operational costs were mainly attributed to wages, fringe benefits for employees, interest payments and, to a minor extent, materials and supplies.

ELECTRIC EMINENT DOMAIN ACTIONS

Jersey Central Power & Light Company, supplying electricity in all or parts of 10 counties in New Jersey, was granted authority, in four cases, to obtain by eminent domain easements in private lands located in Marlboro Township, Monmouth County, and Madison Township, Middlesex County, for the extension of a 230 KV (230,000 kilovolts) transmission line. The Board held that the property owners would not be unduly injured -- an existing 100' right-of-way is to be broadened 25' on each side -- and the facility expansion was necessary in an area where the growth rate in the last six years has been 8.4%. This is the second stage of a plan to bring a high voltage loop through the eastern part of Monmouth and Middlesex Counties, running south from the Sayreville (Middlesex County) generating station to the Atlantic substation at Colts Neck Township, Monmouth County. The first stage was completed in summer of 1962 when the 230 KV transmission facility from the Larabee substation, near Lakewood, Ocean County, to the Atlantic substation was placed in service. In the area, 19 distribution substations had a peak load over 75,000 KW in 1962. One additional substation was erected in 1962 and two others are in construction.

WATER UTILITY MERGER

The merger of Ideal Beach Water Company (Ideal Beach) into the Monmouth Consolidated Water Company (Monmouth) received Board approval because it is aimed to effect economies, simplify planning for additional service requirements, and to eliminate the necessity for allocations by joint use of personnel, etc. The water systems are interconnected and Monmouth supplies from its own sources all the water distributed by Ideal Beach. Both companies are subsidiaries of the American Water Works Company, Inc.

NON-CONFORMING UTILITY USES

RIVERTON AND PALMYRA WATER COMPANY

Acting under authority of R.S. 40:55-50, allowing the Board to permit a deviation from municipal zoning ordinances, the water utility was allowed to construct a well, well-house, pumps, and associated mains, pipes, and fixtures in a residentially zoned location in Cinnaminson Township, Burlington County. The new installation will have the outward appearance of a residence (the mains being underground). It met the statutory standard, viz; the service, convenience and welfare of the public in that it will increase the system's capacity by 1,000,000 gallons a day, which is required at peak demand times in a built-up and developing area.

LAKESWOOD WATER COMPANY

To permit the flow of sewage from two garden apartment developments in Lakewood Township, Ocean County, for 470 families, located at a lower level than the utility's collecting system, a pumping station at a higher level was needed. The pump house, and

associated sewerage facilities, of brick construction like the apartment buildings with lawn and shrubbery, were allowed to be placed in a residential and business zoned area.

APPROVAL AND REVOCATION OF MUNICIPAL CONSENT

Southern Gulf Water Company (Gulf) received the Board's approval of a resolution by Freehold Township, Monmouth County, consenting to Gulf's operation of a water system in parts of the Township where two developments will have 335 homes and two developers will build on 86 lots. Freehold Water & Utility Company (intervenor), having no facilities at the location, surrendered its franchise rights to the area, and the Board revoked the same. Gulf now serves water in East Windsor Township, Mercer County, and will install a separate system in Freehold Township. The proposed well will have a capacity of 200,000 gallons per day, adequate to serve 500 homes expected to be built by 1967. Any operating losses and financial obligations will be met by Southern Gulf Utilities, Inc., parent of Gulf, under an indemnity agreement.

GRADE CROSSING

On petition of the Borough of Milltown, Middlesex County, the Board granted authority to establish a grade crossing over the Raritan River Railroad by extending and connecting two improved streets. One benefit is that traffic will be alleviated at the school on one of the streets. The railroad has no passenger business but usually runs one or two freight trains a day from Milltown to South Amboy, New Jersey, at a maximum speed of 10 m.p.h. Protection will be by automatic flashing lights, the cost to be agreed upon by the Borough and the railroad.

On a joint petition by the Boroughs of New Shrewsbury and Eatontown, both in Monmouth County, the Board found, after public hearing, that crossing protection (cross-buck warning signs) at the grade intersection of Hope Road and The Central Railroad Company of New Jersey track was inadequate to protect the traveling public. With the Board paying the State's 70% share, the railroad 15%, and each borough 7-1/2%, automatic gates, automatic flashing light warning signals and bell, and appurtenant warning signs will be installed.