

75c 974.905  
044.4  
C.1

DEPARTMENT OF HUMAN SERVICES  
INTER-OFFICE COMMUNICATION

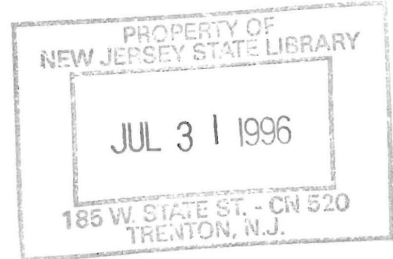
DATE July 19, 1996

TO William Waldman  
Commissioner

FROM Karen Highsmith  
Acting Director

*K. Highsmith*

SUBJECT CURRENT PROGRAM STATISTICS



Attached please find CURRENT PROGRAM STATISTICS, including the FDP Statistical Summary for May 1996, with additional data on GA Emergency Assistance. Also included are explanatory notes for the various data elements.

Should you have any questions, please feel free to call me.

KH:kas:c

Attachments

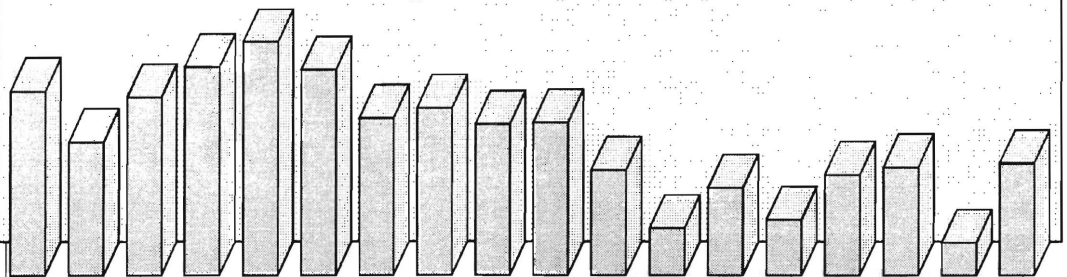
c Guhl  
Grant  
Tencza

*State of New Jersey  
Department of Human Services  
Division of Family Development*

# **CURRENT PROGRAM STATISTICS**

May 1996

Karen Highsmith, Acting Director



State of New Jersey  
Department of Human Services  
Division of Family Development

**CURRENT PROGRAM STATISTICS**  
May 1996

TABLE OF CONTENTS

**Page**

<b>Highlights of Current Program Statistics .....</b>	<b>1-3</b>
---	------------

**Statistics by County, May 1996**

Table 1 AFDC .....	4
Graph 1 Current AFDC Families.....	5
Table 2 Food Stamp Program.....	6
Graph 2 Current Food Stamp Households/Persons .....	7
Table 3 AFDC/SSI Emergency Assistance Program .....	8
Graph 3 Current AFDC Families Receiving Emergency Assistance .....	9
Table 4 Family Development Program.....	10

**State Summary, 1994 - 1996**

Table 5 AFDC, May 1994 - May 1996 .....	12
Graph 4 Families Receiving AFDC, 5/94 - 5/96 .....	12
Table 6 Food Stamp Program, May 1994 - May 1996 .....	13
Graph 5 Food Stamp Households, 5/94 - 5/96 .....	14
Graph 6 Food Stamp Recipients, 5/94 - 5/96.....	15
Table 7 AFDC Emergency Assistance Program, May 1994 - May 1996 .....	16
Graph 7 AFDC Families Receiving Emergency Assistance, 5/94 - 5/96 .....	17
Table 8 JOBS/FDP Participation Rates, by County and Statewide, May 1994 - May 1996 .....	18
Graph 8 JOBS/FDP Participation Rates, 5/94 - 5/96 .....	18-19
Table 9 General Assistance, and GA Emergency Assistance, January 1994 - January 1996.....	20
Graph 9 General Assistance Recipients, 1/94-1/96 .....	21
Table 10 Child Support and Paternity, Fiscal Years 1994-1996 .....	22

<b>Explanatory Notes.....</b>	<b>23-24</b>
-------------------------------	--------------

**Supplement**

Table 11 General Assistance Recipients and EA Payments by County and Municipality, January 1996 .....	25
Table 3 AFDC/SSI Emergency Assistance Program, April 1996 (Revised).....	26

## Highlights of Current Program Statistics

### AFDC (Tables 1 and 5, Graphs 1 and 4)

**113,900 eligible families in New Jersey were receiving AFDC as of the end of May 1996:**

- **102,600** single head of household families (Regular AFDC, C segment).
- Among two-parent families, over **3100** Unemployed Parent families (F Segment) and less than **3200** State AFDC families (N Segment).
- **5000** Medicaid Only families.
- The largest numbers of families by county: Essex with **28,800**, Hudson with **18,100**, and Camden County with **13,000**. (52.5 percent of all AFDC families)
- Other counties ranged from under **200** families in Hunterdon to **7,300** in Passaic County.

**There were about 1000 fewer eligible families in May 1996 than in the previous three months, with a total decline of nearly 11,000 since the May/June 1994 peak of 124,600.**

- There were also about **1000** fewer eligible C segment families in May than in the previous three months, and **9200** less than the peak of **111,800** in June 1994.
- F segment families declined from over **4500** in May 1994 to about **3200** by October 1995, with only a small decline since then.
- State AFDC (N segment) also peaked at almost **3500** in May 1994, but slowly declined to less than **3200** by November 1995 and has remained almost unchanged since then.
- Medicaid Only families remained at or below **5000** in 1994, but averaged nearly **5200** for 1995. For the first five months of 1996 they have averaged about **5000**.

### FOOD STAMP PROGRAM (Tables 2 and 6, Graphs 2, 5, and 6)

**At the end of May 1996, about 222,700 households were participating in the Food Stamp Program:**

- **108,200** AFDC households with **338,900** persons.
- **114,500** Other Low Income households with **174,300** persons.
- **48 percent** were in Essex (**55,600**), Hudson (**30,100**) and Camden (**21,600**) Counties.
- Food Stamp households included about **513,200** persons, **246,900** adults and **266,300** children.
- In May, the number of adults exceeded the number of children in Food Stamp households in **nine** counties (Atlantic, Bergen, Hunterdon, Middlesex, Monmouth, Morris, Somerset, Sussex, and Warren).

**There were 222,000 Food Stamp households in New Jersey in May 1994. The number has remained around the 220,000 to 223,000 range since then, except for a peak in March 1995 of almost 225,000.**

- The number of Other Low Income households continues to rise and has exceeded the number of AFDC(FS) households since November 1995, with a difference of over **6000** in May 1996. Other Low Income households receiving Food Stamps averaged **106,000** for all of 1994, and was up to more than **113,000** for the first five months of 1996. AFDC(FS) households averaged nearly **115,000** for 1994, and only **109,000** for the first five months of 1996.
- Total Recipients were almost **531,000** in May 1994. After declining to **522,000** by January 1995 they peaked again at **529,500** in March 1995, then declined to less than **512,000** in December 1995. After again increasing through March 1996 to close to **516,000**, the level declined to about **513,000** over the following two months.
- The number of Recipient Adults averaged about **246,000** for 1994 through the first five months of 1996. There were peaks of **250,000** in March 1995 and nearly **248,000** in March 1996.
- The average number of Recipient Children was **279,000** for all of 1994, **273,000** in 1995, and **267,000** for the first five months of 1996.

## **EMERGENCY ASSISTANCE** (Tables 3, 7 and 9, Graphs 3, 7 and 9)

**In May 1996 5, 498 eligible AFDC families and 422 SSI recipients received Emergency Assistance (EA) payments in New Jersey. For AFDC families this included:**

- **1,873** families with Temporary Rental Assistance (TRA)
- **323** motel placements and **350** emergency shelter placements
- All other AFDC-EA accounted for **2,952** families, including back rent, back utilities, security deposits, furnishings, clothing and food allowance, or transitional housing.
- **1380** AFDC families in Essex County received EA, with **729** in Passaic, **714** in Middlesex, and **483** in Bergen. All other counties had between **11** and **392**, with ten counties **under 100**.

**In the past two years the highest number of AFDC families receiving EA was in May of 1994, with close to 8000. The number dropped as low as 4500 by February 1996, then increased to almost 5500 by May.**

- The number of AFDC families provided TRA each month has declined steadily from an average of **3200** in 1994 to **1800** for the first five months of 1996.
- Emergency Shelter has been provided to an average of **under 400** AFDC families for 1994 through the first five months of 1996, while Motel Housing declined from an average of close to **500** in 1994 to about **300** for the first five months of 1996.
- An average of **3300** families received Other EA in 1994 and **2800** in 1995. The number dropped to less than **2100** in February 1996 but moved up to almost **3000** by May.

**In January 1996, more than 7200 GA recipients received EA, including 4400 with TRA. For 1994 there were an average of 7800 GA EA recipients and for 1995 about 7400.**

## **JOBS/FDP PARTICIPATION RATES** (Table 8, Graph 8)

The Statewide JOBS/FDP participation rate of **28.6 percent** in May 1996 was the highest in the last two years. This is the third month of increase since February. The rate is about three percent above May 1995 and approaching nine percent above two years ago when the rate was only **20.1 percent**. A clear upward shift has been evident over the past two years.

- Since May 1994, most counties have shown upward movement in participation rates. With some fluctuations, Burlington, Cape May, Essex, Gloucester, Hudson, Middlesex, Monmouth, Ocean, Passaic and Union showed clear upward movement. Bergen, Camden, and Mercer have had little or no increase overall. Cumberland has maintained very high participation rates. Atlantic, Salem, Somerset, Sussex, and Warren also exhibited high rates, but have had wide fluctuations. Hunterdon jumped to higher levels during 1995, while Morris increased markedly in 1995 and remains at record levels ( over 90 percent).
- For May 1996 County rates were distributed as follows:
  - 14 to 20 percent** -- Camden and Essex
  - 20 to 30 percent** -- Bergen, Cape May, Gloucester, Hudson and Ocean
  - 30 to 40 percent** -- Burlington, Mercer, Middlesex, Monmouth, Passaic and Union
  - 40 to 60 percent** -- Atlantic, Hunterdon, Salem and Warren
  - over 70 percent** -- Cumberland, Morris, Somerset, and Sussex
- From April to May 1996, participation rates increased in thirteen of the State's 21 counties.

## **GENERAL ASSISTANCE** (Table 9, Graph 9)

For the period January 1994 through January 1996 (the latest available information), the number of GA recipients peaked at **38,100** in March 1994. The level held around **35,000** from September 1994 through April 1995, and was below **34,000** each month thereafter. Since July 1995 Employables have been increasing and Unemployables decreasing.

- The number of employable recipients peaked in March 1994 at **26,400**. After declining, the level remained slightly over **23,000** from September through December 1994, spiked at about **24,000** in January and March 1995, then resumed declining to a low of **21,000** in July 1995. There has been a gradual increase to over **23,000** since then.
- Unemployable GA recipients remained within a relatively narrow range then began to decline noticeably. The level remained between **11,000 and 12,300** from October 1993 through July 1995. Since July 1995, Unemployable GA recipients have declined to about **10,000**.

## **CHILD SUPPORT AND PATERNITY COLLECTIONS** (Table 10)

Total collections of the Child Support and Paternity Program remained nearly unchanged at **\$412 million** for the first nine months of SFY 1996 compared to SFY 1995.

- AFDC/Foster Care collections increased from almost **\$62 million** to more than **\$66 million**, or **7.3 percent**. This was offset by a decrease in Non-AFDC collections which dropped from more than **\$350 million** to less than **\$346 million**, a decline of **1.4 percent**.
- Federal tax collections increased by **\$8 million** or almost **200 percent**, and UIB increased by almost **\$6 million** or **47 percent**. This was offset by a **\$20 million** decline (**15 percent**) in the Other/Own Behalf category.

New Jersey Department of Human Services  
Division of Family Development

**TABLE 1**

**AFDC Program**

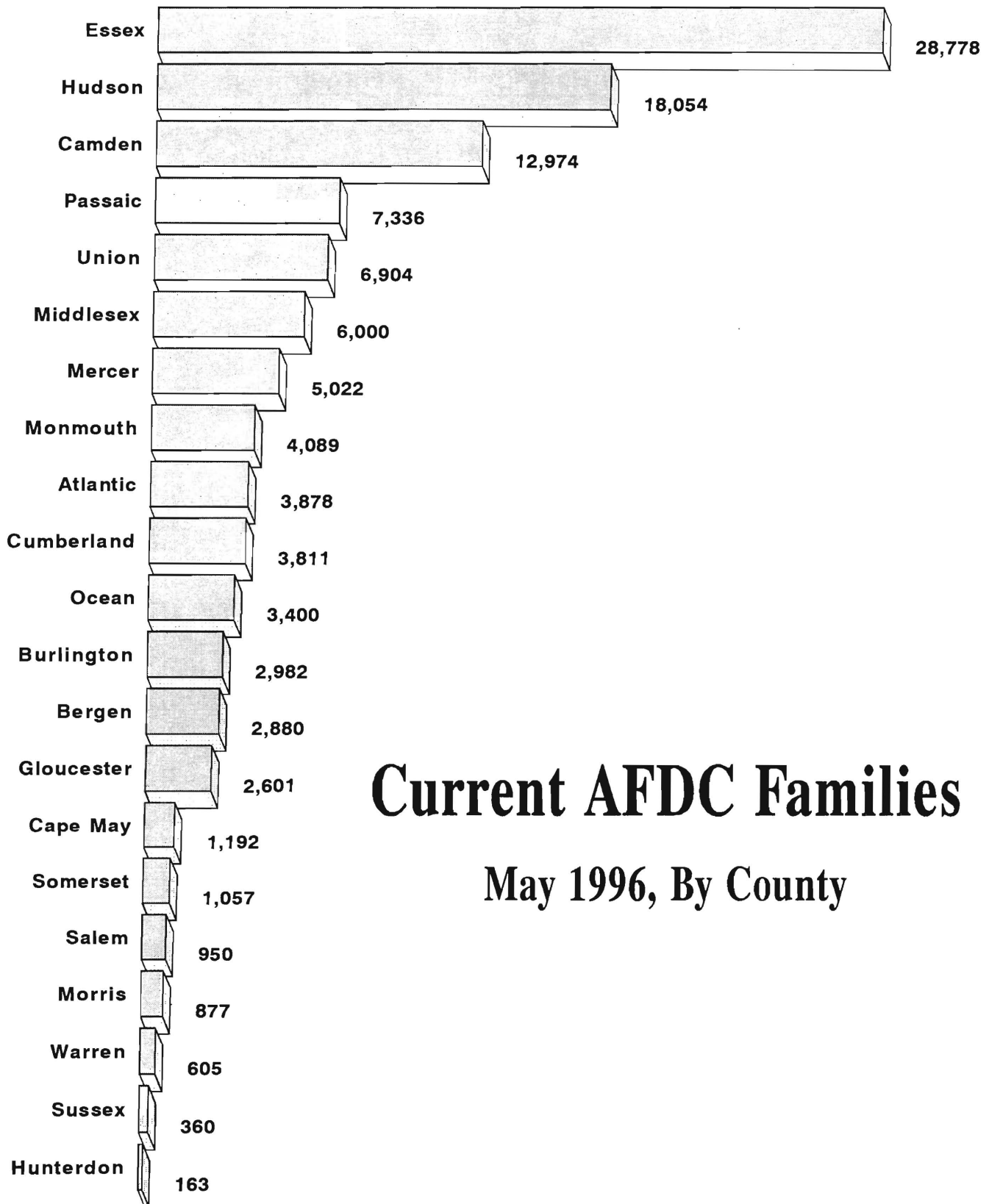
**NUMBER OF APPLICATIONS AND TERMINATIONS DURING REPORT MONTH, AND  
NUMBER OF ELIGIBLE FAMILIES RECEIVING AFDC AT END OF REPORT MONTH**

**May 1996**

County	Applications Approved	Terminations	Regular AFDC (C Segment)	Unemployed Parents (F)	State AFDC (N)	Medicaid Only	TOTAL AFDC
Atlantic	236	279	3,550	125	71	132	3,878
Bergen	124	153	2,553	127	123	77	2,880
Burlington	186	228	2,579	88	89	226	2,982
Camden	720	829	11,350	537	374	713	12,974
Cape May	75	65	975	68	75	74	1,192
Cumberland	209	249	3,199	191	204	217	3,811
Essex	836	1,079	27,405	431	214	728	28,778
Gloucester	163	165	2,239	131	74	157	2,601
Hudson	514	589	16,229	323	635	867	18,054
Hunterdon	13	24	133	4	7	19	163
Mercer	394	418	4,493	93	105	331	5,022
Middlesex	392	457	5,007	232	278	483	6,000
Monmouth	224	256	3,775	82	179	53	4,089
Morris	48	82	795	24	26	32	877
Ocean	206	229	2,873	154	148	225	3,400
Passaic	360	348	6,728	279	261	68	7,336
Salem	101	100	839	16	28	67	950
Somerset	121	128	853	46	35	123	1,057
Sussex	38	36	285	15	6	54	360
Union	328	391	6,226	113	202	363	6,904
Warren	47	47	514	33	29	29	605
<b>NJ TOTAL</b>	<b>5,335</b>	<b>6,152</b>	<b>102,600</b>	<b>3,112</b>	<b>3,163</b>	<b>5,038</b>	<b>113,913</b>

Data Sources: Data is derived from NJ Division of Family Development's FAMIS report # FF-012.

# GRAPH 1



## Current AFDC Families

### May 1996, By County

New Jersey Department of Human Services  
Division of Family Development

## TABLE 2

### FOOD STAMP Program

#### NUMBER OF ATP'S ISSUED TO HOUSEHOLDS, PERSONS, ADULTS AND CHILDREN AT THE END OF THE REPORT MONTH

May 1996

County	HOUSEHOLDS			TOTAL	PERSONS			
	AFDC	Other low income			AFDC	Other low income	Adults	Children
Atlantic	3,626	4,932	<b>8,558</b>	<b>18,469</b>	11,715	6,754	9,268	9,201
Bergen	2,663	5,743	<b>8,406</b>	<b>16,728</b>	7,956	8,772	9,793	6,935
Burlington	2,675	2,975	<b>5,650</b>	<b>12,935</b>	8,130	4,805	6,383	6,552
Camden	12,576	9,026	<b>21,602</b>	<b>53,895</b>	40,955	12,940	24,302	29,593
Cape May	1,152	1,260	<b>2,412</b>	<b>6,044</b>	3,860	2,184	2,914	3,130
Cumberland	3,659	2,801	<b>6,460</b>	<b>16,686</b>	12,227	4,459	7,657	9,029
Essex	28,301	27,300	<b>55,601</b>	<b>126,662</b>	87,551	39,111	59,668	66,994
Gloucester	2,383	1,911	<b>4,294</b>	<b>10,520</b>	7,377	3,143	4,966	5,554
Hudson	17,106	13,005	<b>30,111</b>	<b>72,295</b>	52,110	20,185	32,891	39,404
Hunterdon	141	359	<b>500</b>	<b>995</b>	425	570	566	429
Mercer	4,594	4,619	<b>9,213</b>	<b>20,008</b>	14,022	5,986	9,569	10,439
Middlesex	5,551	6,079	<b>11,630</b>	<b>25,878</b>	16,518	9,360	12,940	12,938
Monmouth	3,913	6,423	<b>10,336</b>	<b>22,309</b>	12,422	9,887	11,574	10,735
Morris	766	1,826	<b>2,592</b>	<b>5,154</b>	2,259	2,895	3,025	2,129
Ocean	3,408	4,631	<b>8,039</b>	<b>20,166</b>	11,160	9,006	9,528	10,638
Passaic	6,976	10,009	<b>16,985</b>	<b>39,211</b>	22,911	16,300	19,043	20,168
Salem	900	792	<b>1,692</b>	<b>4,135</b>	2,882	1,253	1,915	2,220
Somerset	999	1,933	<b>2,932</b>	<b>5,769</b>	2,902	2,867	3,177	2,592
Sussex	308	658	<b>966</b>	<b>2,188</b>	920	1,268	1,170	1,018
Union	5,938	7,124	<b>13,062</b>	<b>29,456</b>	18,827	10,629	14,625	14,831
Warren	570	1,052	<b>1,622</b>	<b>3,710</b>	1,762	1,948	1,944	1,766
<b>NJ TOTAL</b>	<b>108,205</b>	<b>114,458</b>	<b>222,663</b>	<b>513,213</b>	<b>338,891</b>	<b>174,322</b>	<b>246,918</b>	<b>266,295</b>

ATP - Authorization to Participate, may include some duplication

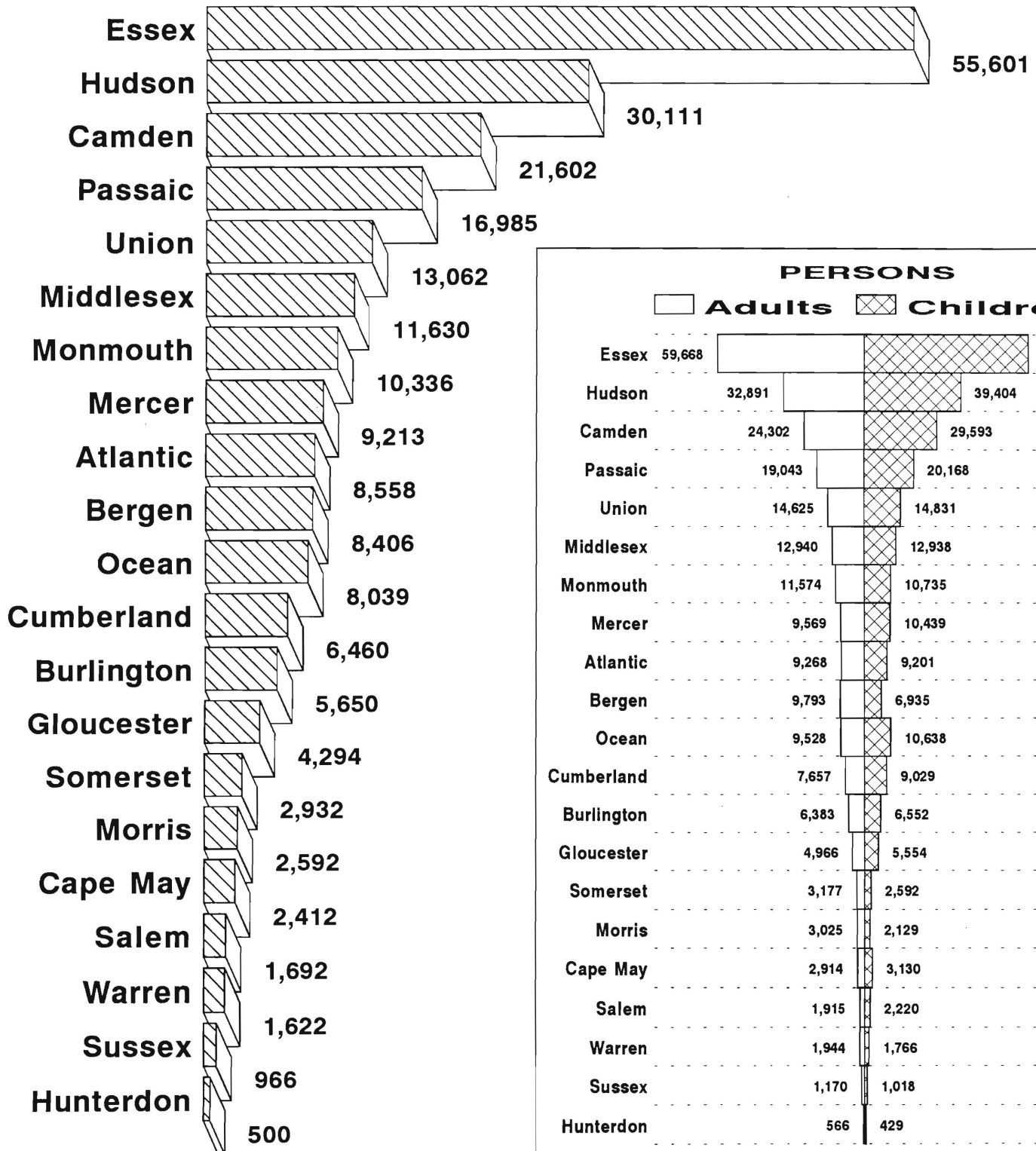
Data Sources: Data is derived from NJ Division of Family Development's FAMIS report # FB-160.

# GRAPH 2

## Food Stamp Households

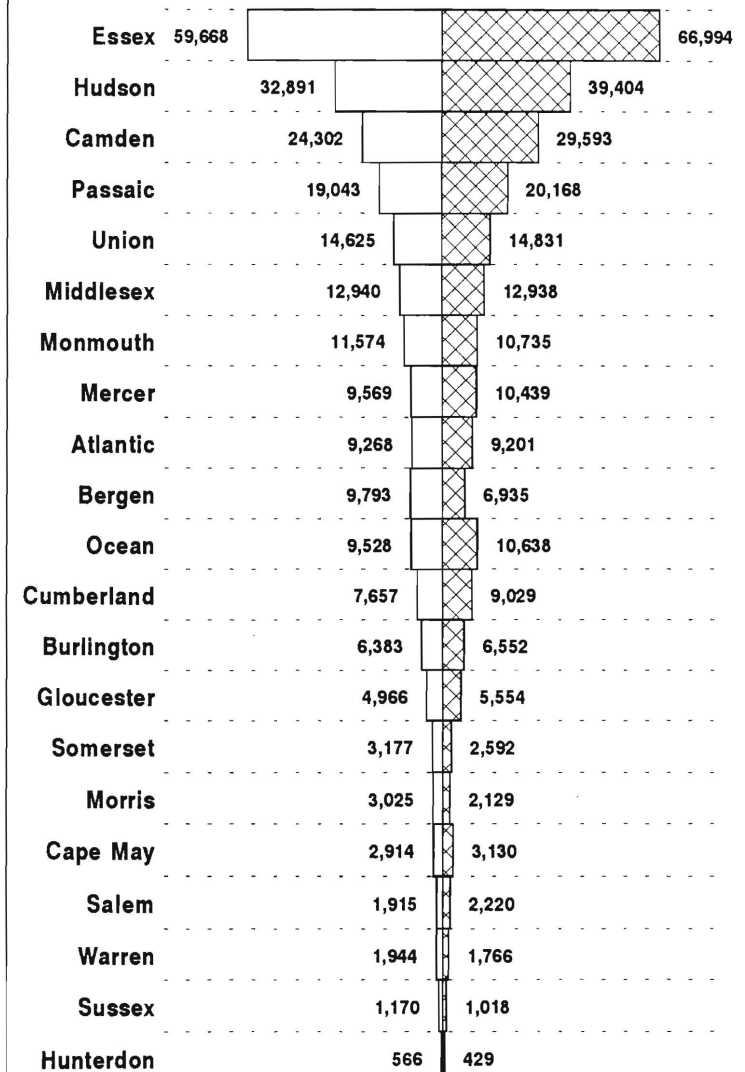
### May 1996, By County

 HOUSEHOLDS



#### PERSONS

 Adults  Children



New Jersey Department of Human Services  
Division of Family Development

**TABLE 3**

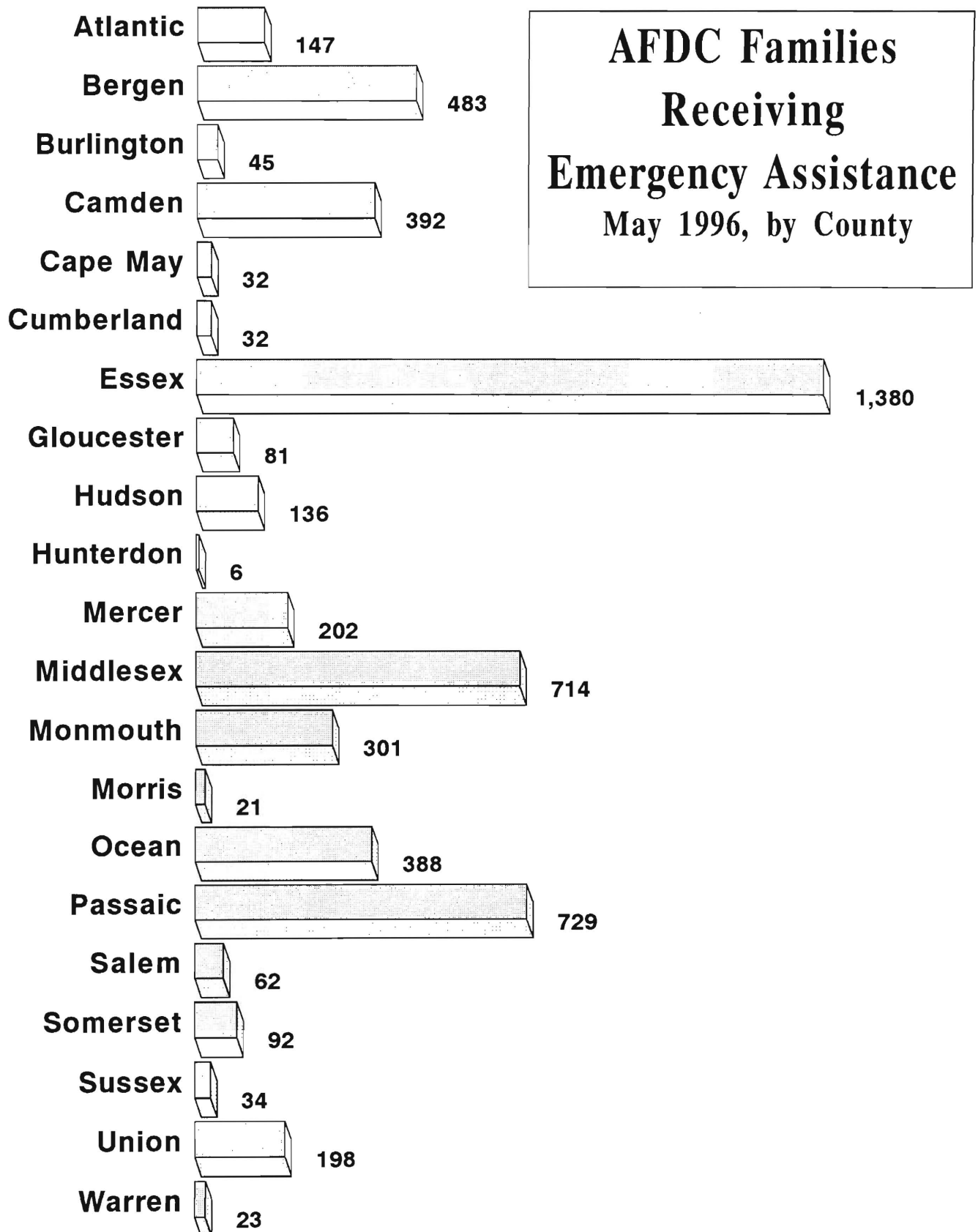
**AFDC/SSI EMERGENCY ASSISTANCE RECIPIENTS**

NUMBER OF ELIGIBLE FAMILIES RECEIVING EMERGENCY ASSISTANCE PAYMENTS  
(UNDUPLICATED CASES)

**May 1996**

County	AFDC Families Receiving Emergency Assistance					SSI Recipients Receiving EA
	TOTAL AFDC -EA	Temporary Rental Assist	Motel Housing	Emergency Shelter	Other AFDC-EA	
ATLANTIC	147	43	12	18	74	46
BERGEN	483	238	42	32	171	23
BURLINGTON	45	3	1	30	11	6
CAMDEN	392	78	3	31	280	27
CAPE MAY	32	6	1	0	25	8
CUMBERLAND	32	0	3	14	15	7
ESSEX	1,380	612	14	72	682	32
GLOUCESTER	81	35	0	25	21	6
HUDSON	136	18	7	42	69	6
HUNTERDON	6	0	1	2	3	0
MERCER	202	105	12	7	78	21
MIDDLESEX	714	397	29	6	282	38
MONMOUTH	301	135	33	4	129	9
MORRIS	21	1	2	3	15	10
OCEAN	388	135	99	2	152	66
PASSAIC	729	8	11	24	686	77
SALEM	62	12	18	2	30	4
SOMERSET	92	12	9	6	65	9
SUSSEX	34	3	9	6	16	9
UNION	198	32	4	21	141	16
WARREN	23	0	13	3	7	2
NJ TOTAL	5,498	1,873	323	350	2,952	422

Data Sources: Derived from NJ Division of Family Development FAMIS Reports #FM 457 and #FM 430-03a.

**GRAPH 3**

NEW JERSEY DEPARTMENT OF HUMAN SERVICES  
DIVISION OF FAMILY DEVELOPMENT

**TABLE 4**  
**FAMILY DEVELOPMENT PROGRAM**  
**STATISTICAL SUMMARY**

COUNTY	SNAPSHOT OF ACTIVITY AS OF MAY 1996				ACTIVITY FOR MONTH OF MAY 1996					
	TOTAL NONEXMT JOBS/FDP RECI- PIENTS	EMPLOYMENT DIRECTED ACTIVITIES(1)			PARTIC IN EDAs & RECEIVE SUPPORT SERVICES		PARTIC W/ 1st C M INTV	# EMPL THIS MONTH & STILL REC AFDC	# CLSD ON FAMIS RE: EARNING (2)	POST AFDC & REC CHILD CARE
		TRAIN- ING	EDUCA- TION	JOB SEARCH	TREs	CHILD CARE				
ATLANTIC	1,448	362	219	138	335	247	193	114	103	170
BERGEN	1,823	223	131	31	225	149	43	24	42	78
BURLINGTON	1,450	342	139	74	355	185	134	48	69	183
CAMDEN	8,747	593	492	31	748	504	367	48	126	242
CAPE MAY	611	86	9	59	61	21	74	17	41	5
CUMBERLAND	1,529	325	283	22	622	289	219	88	75	106
ESSEX	17,507	1,559	921	319	2,267	1,537	379	79	156	154
GLOUCESTER	1,163	307	115	52	445	115	157	16	37	60
HUDSON	11,477	1,093	1,328	169	1,886	1,043	313	40	156	252
HUNTERDON	90	13	16	6	15	14	10	5	6	4
MERCER	3,006	318	281	45	292	238	105	38	81	113
MIDDLESEX	3,355	481	299	132	412	192	250	100	83	130
MONMOUTH	2,530	373	254	123	475	332	97	68	69	163
MORRIS	411	193	46	81	80	88	58	11	26	48
OCEAN	1,933	250	115	95	143	82	153	49	77	113
PASSAIC	3,962	1,012	411	75	1,028	328	210	43	94	125
SALEM	385	91	108	12	125	102	19	10	23	42
SOMERSET	540	71	77	10	95	80	16	22	18	43
SUSSEX	182	60	55	35	44	46	10	13	9	37
UNION	3,804	456	336	178	682	312	147	20	80	105
WARREN	404	77	49	48	36	27	13	11	20	14
STATE	66,357	8,285	5,684	1,735	10,371	5,931	2,967	864	1,391	2,187

(1) - The number of participants receiving support services may occasionally exceed the number actively participating in EDAs. This can result from extended assessment or evaluation activities, or the issuance of bridge payments.

(2) - FAMIS file date 5/18/96

New Jersey Department of Human Services  
Division of Family Development

## TABLE 5

### AFDC Program State Summary

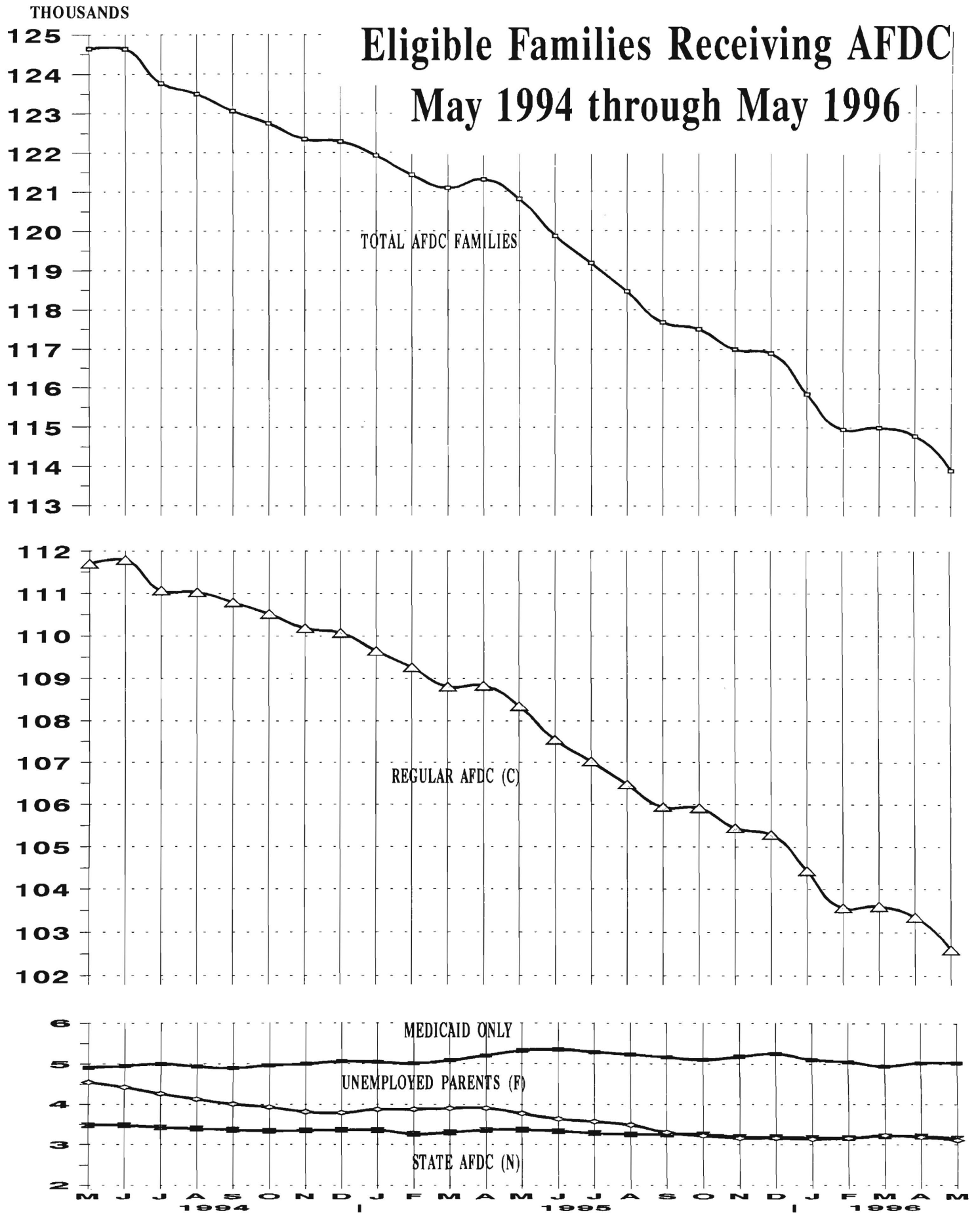
**NUMBER OF APPLICATIONS AND TERMINATIONS DURING REPORT MONTH,  
AND NUMBER OF ELIGIBLE FAMILIES RECEIVING AFDC AT END OF REPORT MONTH**

**May 1994 through May 1996**

	Applications Approved	Termin- ations	Regular AFDC (C Segment)	Unemployed Parents (F)	State AFDC (N)	Medicaid Only	TOTAL AFDC
1994 May	7,094	6,188	111,700	4,549	3,483	4,913	124,645
Jun	5,758	5,742	111,787	4,423	3,477	4,953	124,640
Jul	5,117	5,898	111,064	4,266	3,428	5,007	123,765
Aug	6,435	6,827	111,025	4,128	3,401	4,940	123,494
Sep	6,266	6,754	110,790	4,007	3,369	4,900	123,066
Oct	6,592	6,950	110,517	3,927	3,340	4,966	122,750
Nov	6,344	6,796	110,181	3,814	3,350	5,002	122,347
Dec	5,682	5,890	110,070	3,789	3,360	5,065	122,284
AVERAGE (12 MONTHS)	6,014	6,150	110,901	4,195	3,351	4,928	123,375
1995 Jan	5,583	5,944	109,645	3,875	3,358	5,045	121,923
Feb	5,964	6,515	109,261	3,878	3,270	5,016	121,425
Mar	5,810	6,221	108,800	3,903	3,305	5,088	121,096
Apr	7,096	7,086	108,822	3,907	3,365	5,209	121,303
May	5,288	5,784	108,343	3,773	3,369	5,328	120,813
Jun	5,558	6,458	107,541	3,639	3,336	5,358	119,874
Jul	5,977	6,781	107,028	3,574	3,286	5,293	119,181
Aug	5,547	6,294	106,475	3,489	3,260	5,239	118,463
Sep	5,922	6,647	105,943	3,303	3,260	5,175	117,681
Oct	7,062	7,359	105,917	3,224	3,257	5,110	117,508
Nov	6,083	6,660	105,445	3,164	3,199	5,189	116,997
Dec	5,582	5,775	105,287	3,165	3,189	5,258	116,899
AVERAGE	5,956	6,460	107,376	3,575	3,288	5,192	119,430
1996 Jan	5,332	6,236	104,430	3,139	3,173	5,113	115,855
Feb	5,217	6,283	103,561	3,161	3,170	5,060	114,952
Mar	6,317	6,302	103,598	3,230	3,217	4,956	115,001
Apr	6,896	7,241	103,352	3,192	3,211	5,040	114,795
May	5,335	6,152	102,600	3,112	3,163	5,038	113,913
AVERAGE	5,819	6,443	103,508	3,167	3,187	5,041	114,903

Data Sources: Data is derived from NJ Division of Family Development's FAMIS report # FF-012.

# GRAPH 4



New Jersey Department of Human Services  
Division of Family Development

## TABLE 6

### FOOD STAMP Program State Summary

#### NUMBER OF ATP'S ISSUED TO HOUSEHOLDS, PERSONS, ADULTS AND CHILDREN AT THE END OF THE REPORT MONTH

May 1994 through May 1996

	HOUSEHOLDS			TOTAL	PERSONS			
	AFDC	Other low income	TOTAL		AFDC	Other low income	Adults	Children
1994 May	115,874	106,611	222,485	530,595	364,941	165,654	248,420	282,175
Jun	115,737	106,683	222,420	529,514	364,394	165,120	248,099	281,415
Jul	115,172	105,717	220,889	526,075	362,520	163,555	246,142	279,933
Aug	114,809	106,115	220,924	524,659	361,106	163,553	246,052	278,607
Sep	114,177	105,972	220,149	521,945	358,849	163,096	244,835	277,110
Oct	114,039	106,903	220,942	522,406	358,010	164,396	245,676	276,730
Nov	114,251	107,577	221,828	524,090	358,582	165,508	246,659	277,431
Dec	114,232	107,467	221,699	523,825	358,446	165,379	246,517	277,308
AVERAGE (12 MONTHS)	114,789	105,924	220,714	525,325	361,323	164,003	246,043	279,282
1995 Jan	113,691	107,493	221,184	522,125	356,763	165,362	245,837	276,288
Feb	113,830	108,421	222,251	524,344	357,419	166,925	247,107	277,237
Mar	114,339	110,279	224,618	529,456	359,404	170,052	249,994	279,462
Apr	113,588	108,991	222,579	524,102	356,717	167,385	247,367	276,735
May	113,125	109,171	222,296	522,173	355,099	167,074	246,949	275,224
Jun	112,827	109,198	222,025	521,084	354,211	166,873	246,557	274,527
Jul	111,635	107,978	219,613	515,478	350,378	165,100	243,727	271,751
Aug	111,415	109,603	221,018	516,618	349,372	167,246	245,110	271,508
Sep	110,760	109,154	219,914	513,517	347,126	166,391	243,723	269,794
Oct	110,697	110,268	220,965	514,598	346,519	168,079	244,911	269,687
Nov	110,630	110,763	221,393	514,823	346,034	168,789	245,455	269,368
Dec	109,992	110,155	220,147	511,727	343,955	167,772	243,965	267,762
AVERAGE	112,211	109,290	221,500	519,170	351,916	167,254	245,892	273,279
1996 Jan	109,554	111,166	220,720	512,165	342,778	169,387	244,801	267,364
Feb	109,649	112,813	222,462	515,181	343,314	171,867	246,961	268,220
Mar	109,364	113,895	223,259	515,676	342,361	173,315	247,695	267,981
Apr	108,787	114,163	222,950	514,375	340,597	173,778	247,380	266,995
May	108,205	114,458	222,663	513,213	338,891	174,322	246,918	266,295
AVERAGE	109,112	113,299	222,411	514,122	341,588	172,534	246,751	267,371

ATP - Authorization to Participate

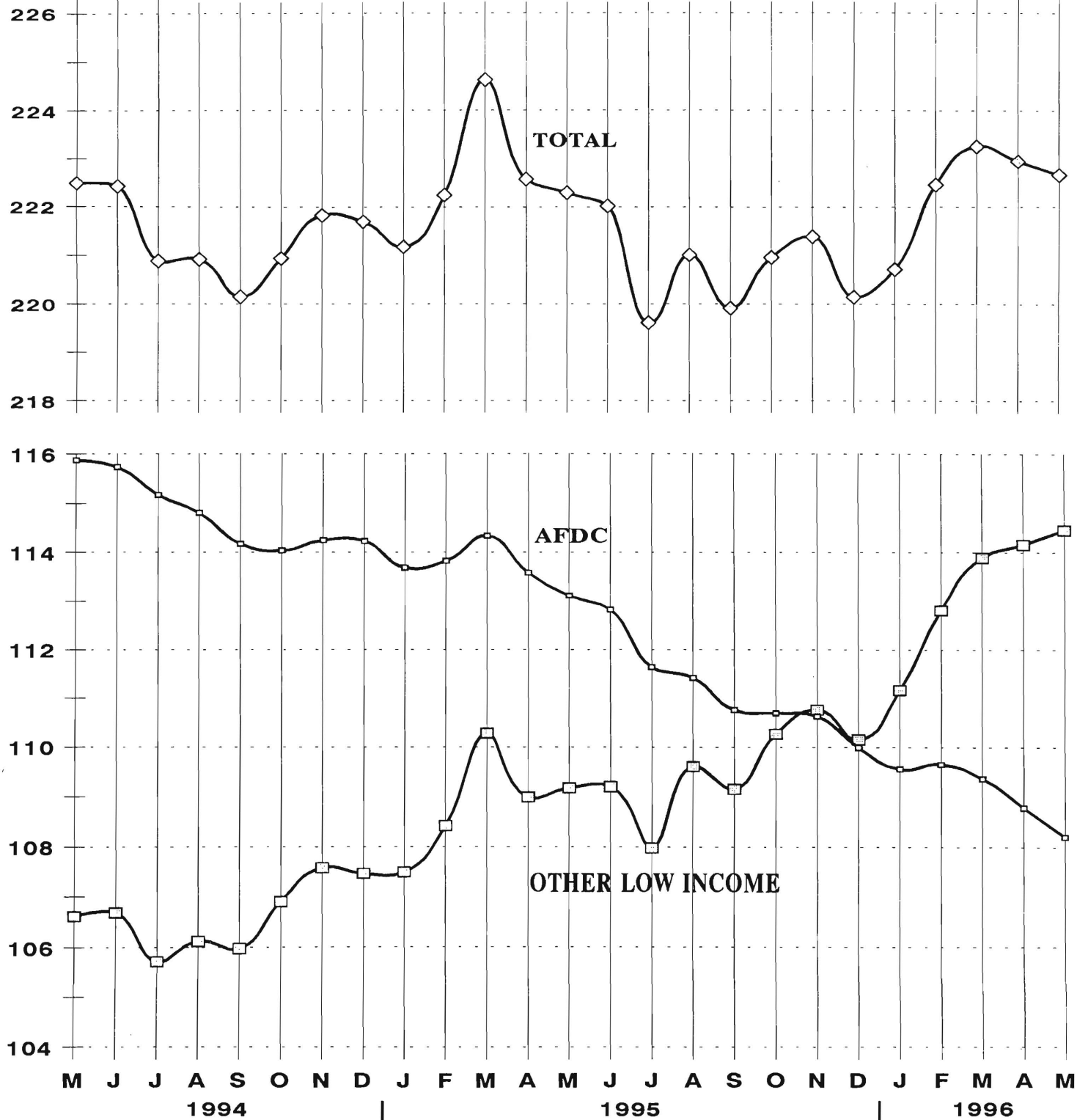
Data Sources: Data is derived from NJ Division of Family Development's FAMIS report # FB-160.

# GRAPH 5

Thousands

## Food Stamp Households

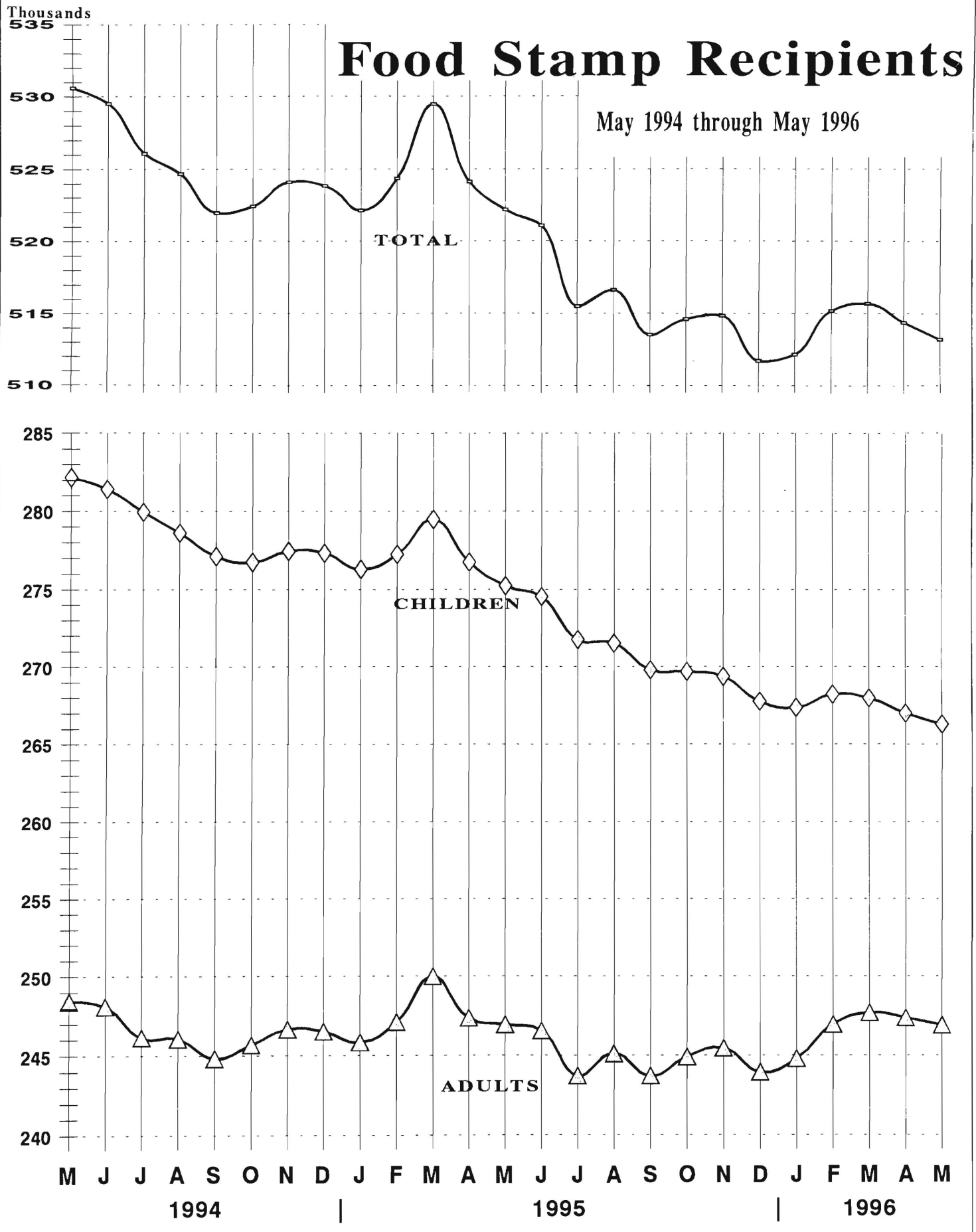
May 1994 through May 1996



Thousands

## Food Stamp Recipients

May 1994 through May 1996



New Jersey Department of Human Services  
Division of Family Development

## **TABLE 7**

### **EMERGENCY ASSISTANCE Program for AFDC Recipients**

#### **State Summary**

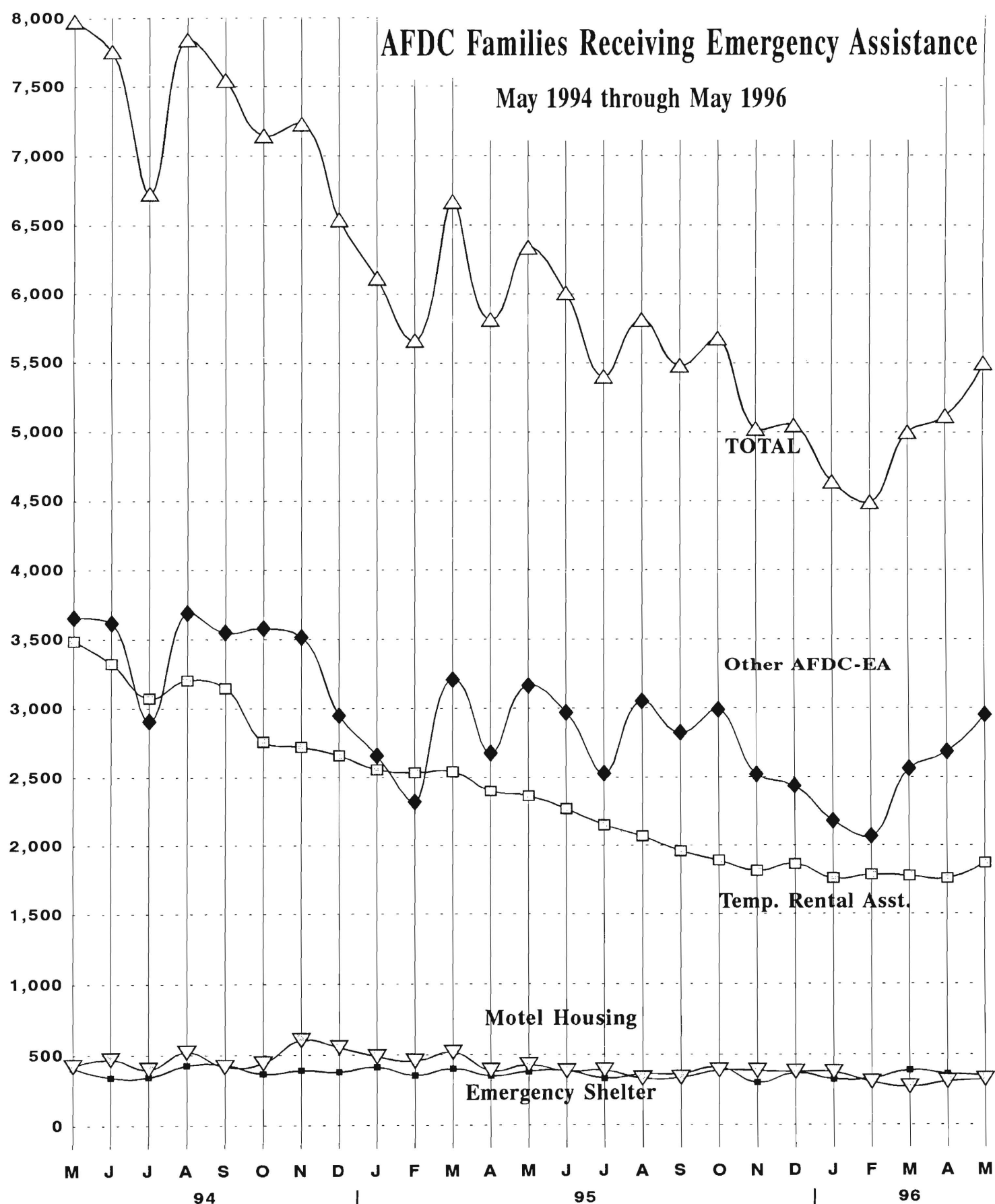
**NUMBER OF ELIGIBLE FAMILIES RECEIVING EMERGENCY ASSISTANCE PAYMENTS  
(UNDUPLICATED CASES)  
MAY 1994 through MAY 1996**

	<b>Total families receiving EA</b>	<b>Temporary rental assist.</b>	<b>Motel Housing</b>	<b>Emergency Shelter</b>	<b>Other AFDC-EA</b>
1994 MAY	<b>7,977</b>	3,488	423	411	3,655
JUN	<b>7,755</b>	3,326	469	343	3,617
JUL	<b>6,727</b>	3,075	400	344	2,908
AUG	<b>7,840</b>	3,204	520	426	3,690
SEP	<b>7,545</b>	3,147	418	430	3,550
OCT	<b>7,147</b>	2,759	442	366	3,580
NOV	<b>7,231</b>	2,720	604	391	3,516
DEC	<b>6,540</b>	2,658	554	379	2,949
Average (12 mos.)	<b>7,326</b>	3,218	468	379	3,260
1995 JAN	<b>6,115</b>	2,557	487	413	2,658
FEB	<b>5,664</b>	2,535	456	354	2,319
MAR	<b>6,668</b>	2,542	516	402	3,208
APR	<b>5,815</b>	2,402	387	351	2,675
MAY	<b>6,338</b>	2,364	427	381	3,166
JUN	<b>6,007</b>	2,268	382	387	2,970
JUL	<b>5,402</b>	2,149	389	334	2,530
AUG	<b>5,813</b>	2,068	331	362	3,052
SEP	<b>5,482</b>	1,958	336	364	2,824
OCT	<b>5,678</b>	1,891	388	410	2,989
NOV	<b>5,024</b>	1,816	384	302	2,522
DEC	<b>5,048</b>	1,864	377	369	2,438
Average	<b>5,755</b>	2,201	405	369	2,779
1996 JAN	<b>4,639</b>	1,761	374	325	2,179
FEB	<b>4,490</b>	1,788	305	330	2,067
MAR	<b>5,001</b>	1,779	270	388	2,564
APR	<b>5,118</b>	1,760	309	364	2,685
MAY	<b>5,498</b>	1,873	323	350	2,952
Average	<b>4,949</b>	1,792	316	351	2,489

# GRAPH 7

## AFDC Families Receiving Emergency Assistance

May 1994 through May 1996

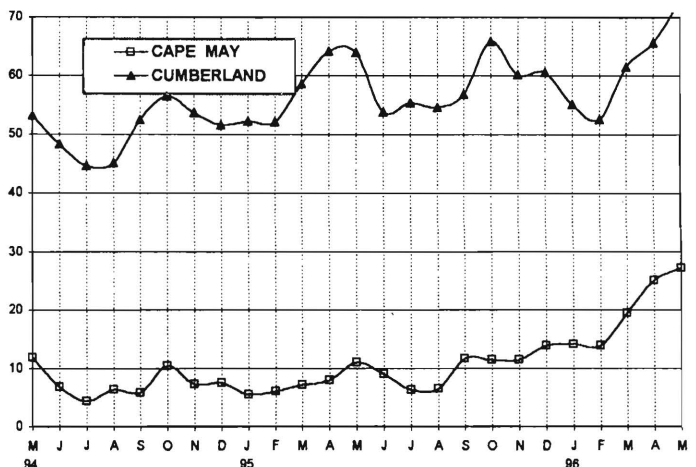
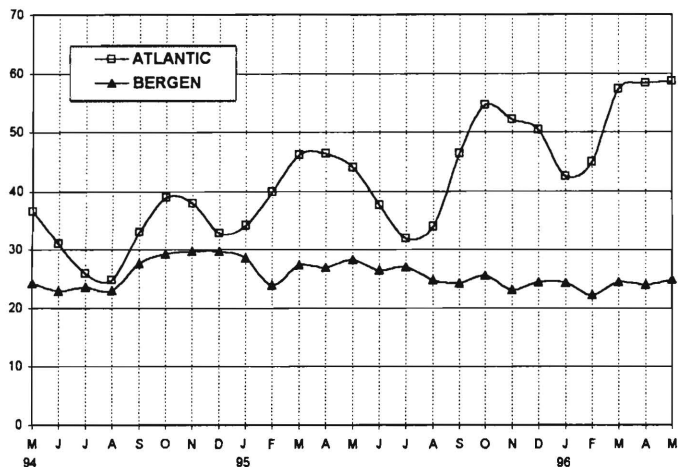
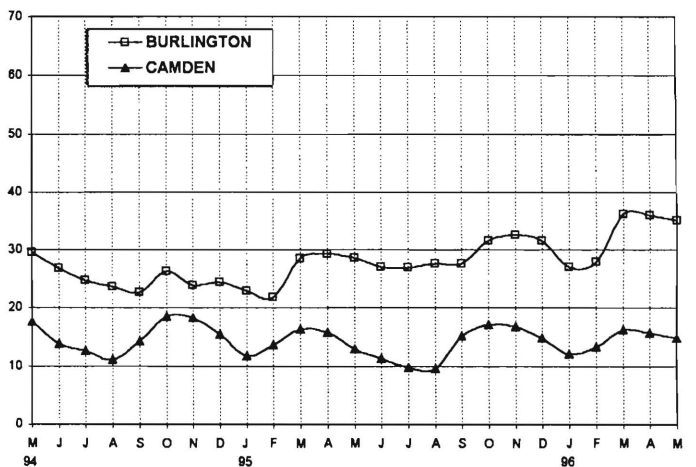
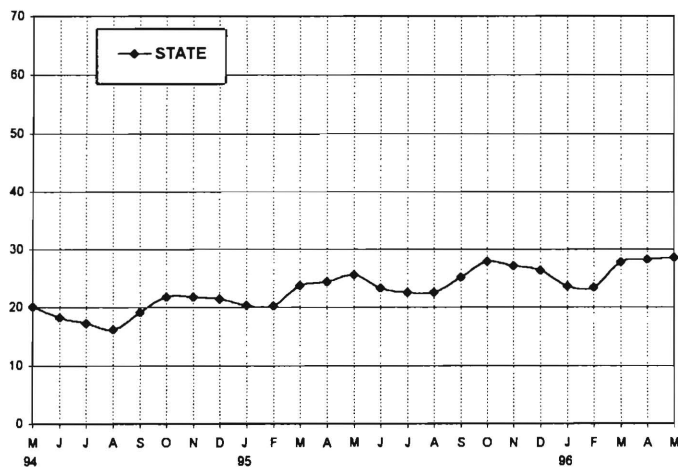


**New Jersey Department of Human Services  
Division of Family Development**

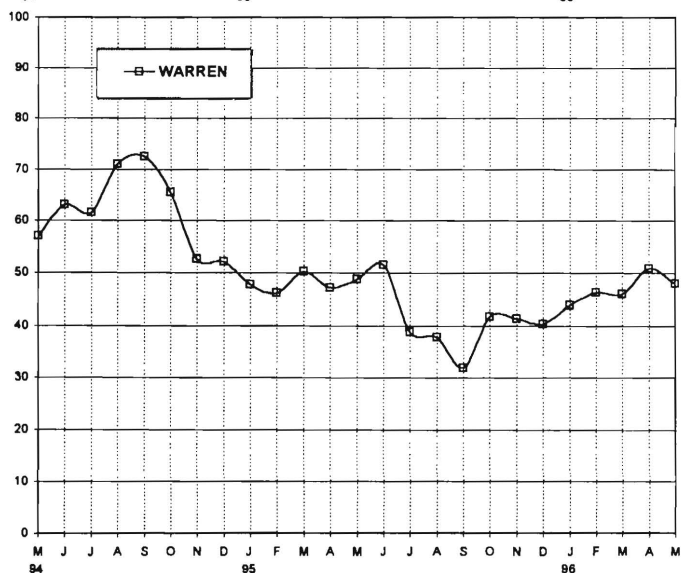
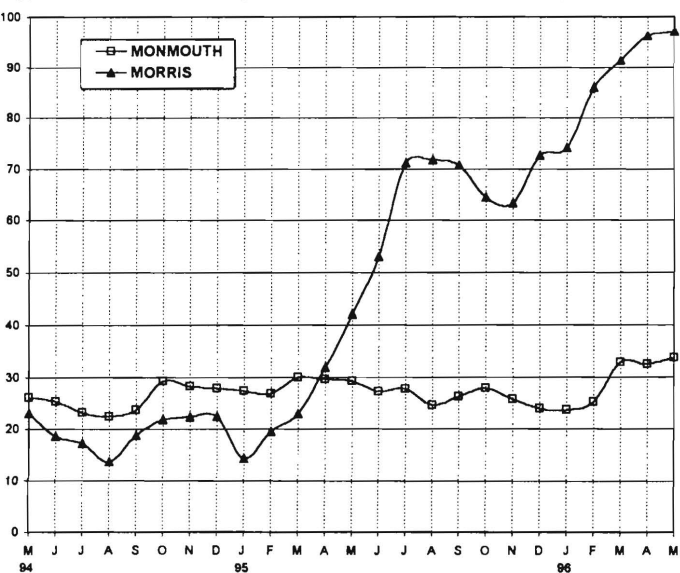
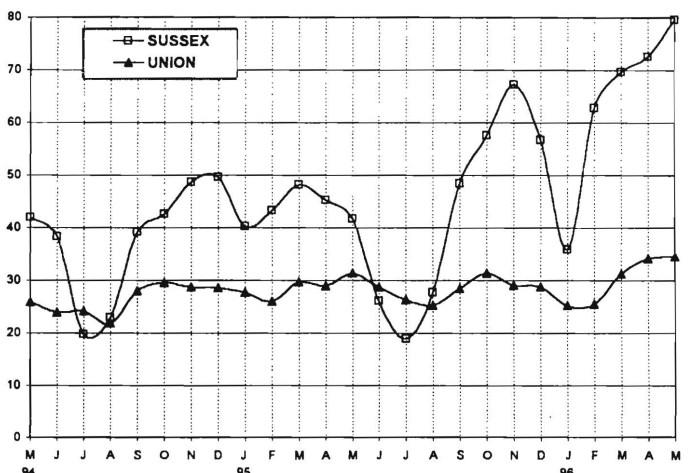
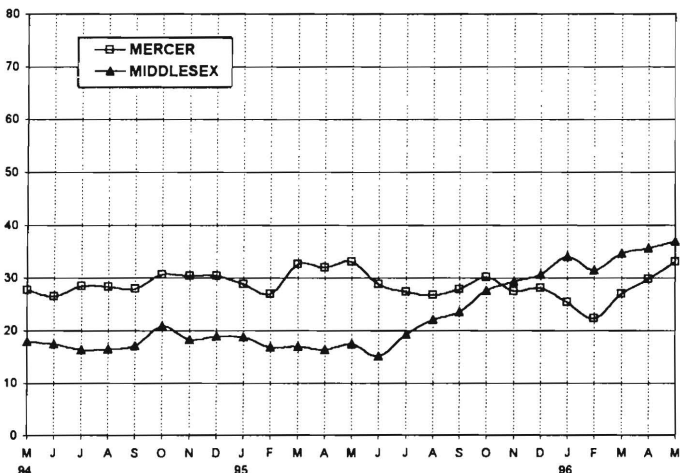
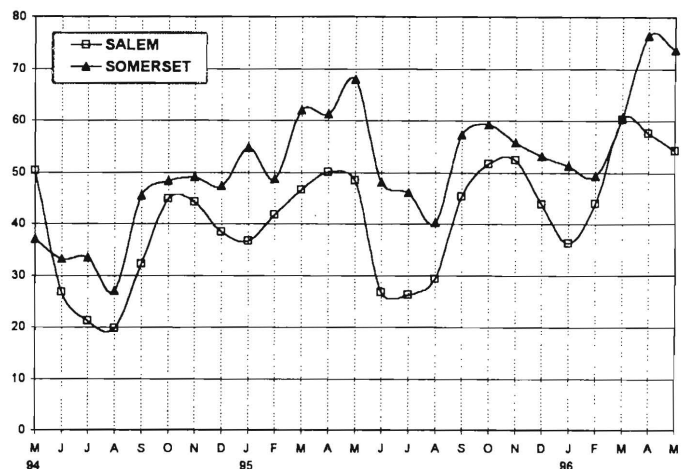
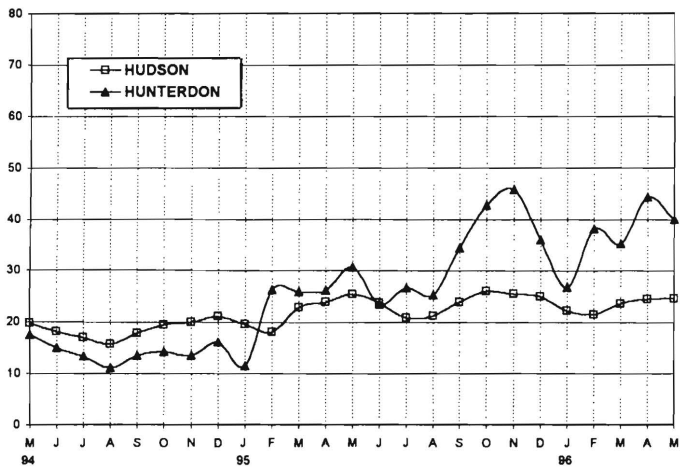
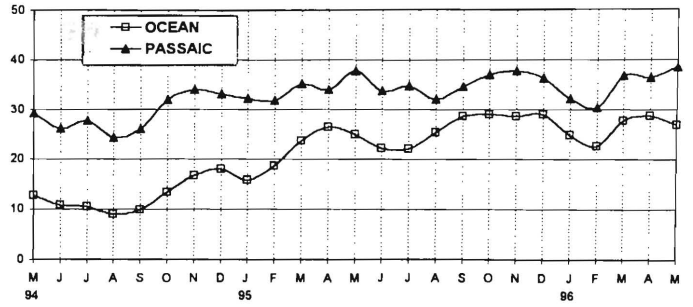
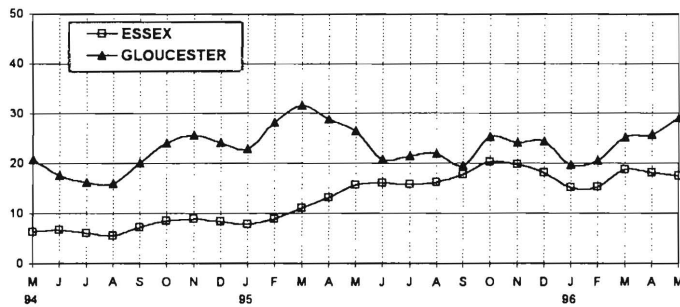
**TABLE 8  
JOBS/FDP PARTICIPATION RATES BY MONTH  
(PERCENT)**

	STATE	ATLANTIC	BERGEN	BURLINGTON	CAMDEN	CAPE MAY	CUMBERLAND	ESSEX	GLOUCESTER	HUSSON	HUNTERDON	MERCER	MIDDLESEX	MONMOUTH	MORRIS	OCEAN	PASSAIC	SALEM	SOMERSET	SUSSEX	UNION	WARREN
94 MAY	20.1	36.6	24.2	29.6	17.6	11.8	53.2	6.3	20.7	19.7	17.5	27.6	17.9	26.0	23.1	12.7	29.2	50.3	37.0	42.0	25.8	57.1
JUN	18.3	31.0	22.9	26.8	13.8	6.9	48.3	6.7	17.6	18.1	15.0	26.4	17.4	25.2	18.6	10.8	26.1	26.7	33.2	38.3	23.9	63.0
JUL	17.3	26.0	23.5	24.7	12.6	4.4	44.7	6.0	16.2	17.0	13.3	28.4	16.3	23.2	17.3	10.6	27.7	21.2	33.4	19.7	24.2	61.5
AUG	16.3	24.8	23.0	23.7	11.1	6.3	45.1	5.5	15.8	15.7	11.1	28.3	16.5	22.3	13.7	9.0	24.3	19.8	26.9	23.0	21.8	71.0
SEP	19.1	33.0	27.6	22.7	14.3	5.8	52.5	7.2	20.0	17.9	13.4	27.9	17.1	23.7	18.7	9.9	25.9	32.2	45.4	39.2	27.9	72.5
OCT	21.8	39.0	29.3	26.2	18.5	10.4	56.4	8.5	24.0	19.5	14.2	30.5	20.8	29.2	21.7	13.4	31.9	44.8	48.3	42.6	29.5	65.4
NOV	21.8	38.0	29.7	23.9	18.3	7.3	53.7	8.8	25.5	20.0	13.5	30.4	18.2	28.2	22.2	16.7	33.9	44.2	49.1	48.7	28.7	52.6
DEC	21.5	32.8	29.7	24.4	15.5	7.5	51.5	8.3	24.2	21.1	16.1	30.4	18.8	27.8	22.4	18.1	33.0	38.3	47.4	49.6	28.6	52.2
95 JAN	20.4	34.2	28.6	22.9	11.7	5.5	52.2	7.8	22.8	19.6	11.5	28.7	18.8	27.3	14.4	15.8	32.1	36.7	54.7	40.2	27.7	47.7
FEB	20.3	39.8	23.9	21.8	13.6	6.0	52.1	8.8	28.1	18.1	26.2	27.0	16.8	26.8	19.5	18.6	31.7	41.7	48.7	43.3	26.0	46.1
MAR	23.8	46.1	27.3	28.5	16.3	7.2	58.6	11.0	31.6	22.9	25.8	32.5	16.9	29.9	22.9	23.6	35.1	46.6	62.0	48.2	29.6	50.3
APR	24.5	46.3	26.9	29.2	15.7	7.9	64.1	13.0	28.7	23.8	26.1	31.9	16.3	29.6	31.9	26.4	33.9	50.0	61.3	45.3	28.9	47.2
MAY	25.7	44.0	28.3	28.6	12.9	10.9	64.0	15.7	26.4	25.4	30.6	33.1	17.4	29.1	42.0	25.0	37.7	48.4	68.0	41.7	31.4	48.7
JUN	23.3	37.7	26.5	27.1	11.3	9.0	53.8	16.0	20.7	23.8	23.5	28.7	15.1	27.2	52.9	22.3	33.6	26.7	48.1	26.1	28.6	51.5
JUL	22.5	31.9	27.0	26.9	9.8	6.3	55.3	15.8	21.5	20.8	26.6	27.3	19.2	27.7	71.0	22.1	34.7	26.3	46.1	19.0	26.3	38.9
AUG	22.6	33.9	24.8	27.7	9.5	6.5	54.6	16.2	22.0	21.2	25.2	26.7	22.0	24.5	71.7	25.4	32.0	29.4	40.3	27.7	25.2	37.8
SEP	25.2	46.4	24.2	27.6	15.1	11.7	56.9	17.7	19.5	23.8	34.3	27.8	23.6	26.2	70.7	28.6	34.5	45.3	57.3	48.4	28.4	32.0
OCT	27.9	54.6	25.5	31.5	17.1	11.4	65.9	20.2	25.3	26.0	42.7	30.1	27.5	27.8	64.4	28.9	37.0	51.7	59.3	57.5	31.4	41.7
NOV	27.2	52.2	23.1	32.5	16.8	11.5	60.2	19.7	24.1	25.4	45.8	27.4	29.3	25.6	63.3	28.6	37.6	52.4	55.8	67.2	29.0	41.3
DEC	26.4	50.3	24.5	31.5	14.8	13.9	60.6	18.1	24.4	25.0	35.9	28.0	30.6	23.9	72.6	28.9	36.2	43.9	53.2	56.7	28.8	40.3
96 JAN	23.7	42.5	24.3	27.1	12.0	14.1	55.1	15.2	19.7	22.2	26.7	25.3	34.0	23.6	74.1	24.8	32.1	36.3	51.3	35.8	25.2	43.8
FEB	23.5	44.9	22.2	27.9	13.3	13.9	52.6	15.3	20.5	21.5	38.0	22.3	31.5	25.1	85.9	22.6	30.4	43.9	49.4	62.9	25.5	46.3
MAR	27.8	57.3	24.5	36.2	16.2	19.4	61.5	18.7	25.1	23.5	35.2	26.9	34.6	32.8	91.4	27.6	36.8	60.2	60.6	69.6	31.3	45.9
APR	28.3	58.3	24.0	35.9	15.7	25.1	65.6	18.1	25.7	24.4	44.3	29.7	35.5	32.5	96.2	28.6	36.4	57.6	76.4	72.6	34.2	50.9
MAY	28.6	58.6	24.9	35.1	14.8	27.2	72.7	17.4	29.0	24.6	40.0	33.0	36.9	33.7	97.1	26.9	38.5	54.3	73.7	79.7	34.6	48.0

**GRAPH 8  
JOBS/FDP PARTICIPATION RATES (%)**



**GRAPH 8 (CONTINUED)**  
**JOBS/FDP PARTICIPATION RATES (%)**



New Jersey Department of Human Services  
Division of Family Development

**TABLE 9**  
**GENERAL ASSISTANCE Program**  
**State Summary**

**NUMBER OF EMPLOYABLE AND UNEMPLOYABLE RECIPIENTS  
AND EMERGENCY ASSISTANCE PAYMENTS  
DURING REPORT MONTH  
January 1994 through January 1996**

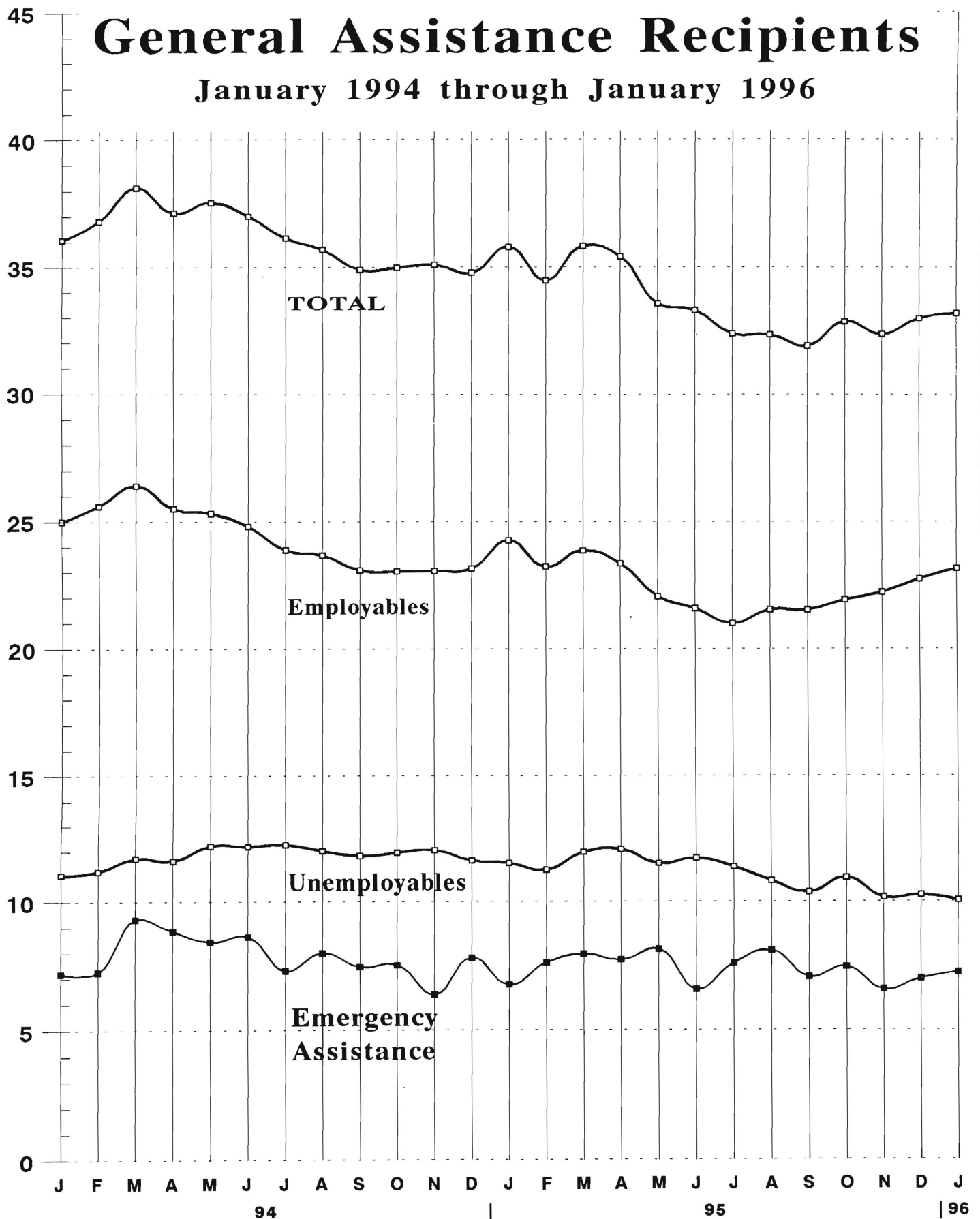
		All Persons Aided			Emergency Assistance payments		
		Employable	Unemployable	Total	Temporary Rental Assist	Other GA-EA	Total
1994	Jan	24,992	11,062	36,054	4,276	2,903	7,179
	Feb	25,600	11,202	36,802	4,697	2,537	7,234
	Mar	26,397	11,719	38,116	4,951	4,348	9,299
	Apr	25,512	11,629	37,141	5,219	3,628	8,847
	May	25,327	12,212	37,539	4,828	3,604	8,432
	Jun	24,814	12,190	37,004	4,587	4,035	8,622
	Jul	23,884	12,261	36,145	4,603	2,685	7,288
	Aug	23,671	12,018	35,689	4,489	3,488	7,977
	Sep	23,075	11,825	34,900	4,424	3,015	7,439
	Oct	23,031	11,950	34,981	4,472	3,032	7,504
	Nov	23,046	12,045	35,091	4,607	1,762	6,369
	Dec	23,142	11,642	34,784	4,657	3,137	7,794
AVERAGE		24,374	11,813	36,187	4,651	3,181	7,832
1995	Jan	24,262	11,537	35,799	4,408	2,343	6,751
	Feb	23,219	11,264	34,483	4,851	2,748	7,599
	Mar	23,855	11,976	35,831	5,036	2,909	7,945
	Apr	23,337	12,082	35,419	4,833	2,887	7,720
	May	22,046	11,527	33,573	4,995	3,135	8,130
	Jun	21,575	11,738	33,313	4,423	2,146	6,569
	Jul	21,000	11,391	32,391	4,048	3,526	7,574
	Aug	21,526	10,829	32,355	4,174	3,909	8,083
	Sep	21,525	10,389	31,914	4,110	2,945	7,055
	Oct	21,913	10,959	32,872	3,939	3,497	7,436
	Nov	22,206	10,171	32,377	4,141	2,422	6,563
	Dec	22,732	10,268	33,000	4,086	2,902	6,988
AVERAGE		22,433	11,178	33,611	4,420	2,947	7,368
1996 Jan		23,140	10,054	33,194	4,421	2,803	7,224

Data Sources: NJ Division of Family Development, GA Fiscal Unit

Thousands

## General Assistance Recipients

January 1994 through January 1996



New Jersey Department of Human Services  
Division of Family Development

## TABLE 10

### CHILD SUPPORT AND PATERNITY COLLECTIONS

#### State Summary

\$1000's

COLLECTION SOURCE	State Fiscal Years			Most Recent Nine Months		
	1994	1995	% change	7/94-3/95	7/95-3/96	% change
<b>AFDC &amp; FOSTER CARE</b>						
Federal Tax	\$15,255	\$15,664	2.7%	\$2,549	\$7,982	213.1%
State Tax	1,970	1,762	-10.6%	1,440	1,558	8.2%
Unempl. Ins. Ben.	4,975	3,867	-22.3%	2,566	3,922	52.9%
Income Withholding	43,219	45,262	4.7%	33,715	32,836	-2.6%
Other/Own Behalf	18,138	18,431	1.6%	13,726	11,795	-14.1%
From Other States	3,621	3,429	-5.3%	2,577	2,472	-4.1%
For Other States	5,269	6,873	30.5%	5,104	5,585	9.4%
<b>TOTAL COLLECTION</b>	<b>\$92,447</b>	<b>\$95,289</b>	<b>3.1%</b>	<b>\$61,678</b>	<b>\$66,151</b>	<b>7.3%</b>
<b>NON-AFDC</b>						
Federal Tax	\$6,547	\$6,822	4.2%	\$1,544	\$4,197	171.9%
State Tax	2,210	2,044	-7.5%	1,700	1,989	17.1%
Unempl. Ins. Ben.	15,110	13,338	-11.7%	9,191	13,410	45.9%
Income Withholding	214,405	251,694	17.4%	185,025	190,383	2.9%
Other/Own Behalf	144,715	156,899	8.4%	117,329	99,470	-15.2%
From Other States	19,969	20,835	4.3%	15,470	15,205	-1.7%
For Other States	20,015	27,338	36.6%	20,241	21,110	4.3%
<b>TOTAL COLLECTION</b>	<b>\$422,970</b>	<b>\$478,969</b>	<b>13.2%</b>	<b>\$350,499</b>	<b>\$345,764</b>	<b>-1.4%</b>
<b>TOTAL</b>						
Federal Tax	\$21,802	\$22,486	3.1%	\$4,093	\$12,179	197.6%
State Tax	4,179	3,806	-8.9%	3,140	3,547	13.0%
Unempl. Ins. Ben.	20,085	17,205	-14.3%	11,757	17,332	47.4%
Income Withholding	257,624	296,957	15.3%	218,741	223,219	2.0%
Other/Own Behalf	162,853	175,329	7.7%	131,055	111,266	-15.1%
From Other States	23,590	24,264	2.9%	18,047	17,678	-2.0%
For Other States	25,284	34,211	35.3%	25,346	26,695	5.3%
<b>TOTAL COLLECTION</b>	<b>\$515,417</b>	<b>\$574,258</b>	<b>11.4%</b>	<b>\$412,177</b>	<b>\$411,915</b>	<b>-0.1%</b>

Collection Source: Reflects Collections Recorded by County Probation Departments

### **Explanatory Notes**

The Department of Human Services Division of Family Development provides basic income and an opportunity to achieve self-sufficiency for individuals and families served by the Division's programs. The Division provides leadership, direction and supervision to those public agencies responsible for administering those programs and plans for and develops policies to promote self-sufficiency.

**AID TO FAMILIES WITH DEPENDENT CHILDREN (AFDC)** - Financial assistance for dependent children and their natural or adoptive parents, or certain other relatives recognized as taking the place of a parent.

**Regular AFDC (C Segment)** - assistance when only one parent is in the home due to death or absence, or both parents are in the home but at least one is incapacitated.

**Unemployed Parents (F Segment)** - assistance when both parents are in the home, neither is incapacitated and the primary wage earner meets the federally defined criteria for unemployment.

**State AFDC (N Segment)** - assistance when both parents are in the home, neither is incapacitated, and the primary wage earner does not meet the federal definition of unemployment.

**Medicaid Only** - families no longer receiving AFDC financial assistance but remaining eligible for Medicaid under applicable provisions which extend coverage beyond period of AFDC assistance.

**FOOD STAMP PROGRAM (FS)** - Authorized by Congress as a nutritional supplement program to provide low income households with more food of greater variety and better nutrition. Program eligibility is based on household income, resources, and expenses for medical, shelter, and dependent care. CWA staff refer certain recipients to the New Jersey Department of Labor for participation in the Food Stamp Employment and Training Program.

**EMERGENCY ASSISTANCE (EA)** - Payments to those eligible for AFDC, Supplemental Security Income or General Assistance, authorized during the 30 consecutive days immediately following the emergency (defined as a substantial loss of shelter, food, clothing, or household furnishings by fire, flood or other similar disaster) or if the eligible individual or family is in an imminent or actual state of homelessness.

## **JOBS/FDP**

**JOB OPPORTUNITY AND BASIC SKILLS PROGRAM (JOBS)** - Federally mandated work/training program for recipients of AFDC established by the Family Support Act of 1988 under Part F of Title IV of the Social Security Act.

**FAMILY DEVELOPMENT PROGRAM (FDP)** - Reform legislation enacted by the State Legislature in January 1992 to: build, strengthen, and support the family unit; encourage family formation; reduce the long-term aspects of welfare dependency; look to the needs of the family unit as a whole; emphasize education and training for all family members; maximize use of educational, training and employment resources; and develop genuine private sector job opportunities.

**SNAPSHOT OF ACTIVITY AT POINT IN TIME** - Status of activities as of the end of the month:

**Total Non-Exempt JOBS/FDP Recipients** - Calculation of the number of mandatory IV-F individuals (FAMIS report # FB304).

**Employment Directed Activities (EDA)** - From Activities Summary Report (OMEGA report # RM064). Unduplicated count of persons participating in **Training, Education, or Job Search**.

**Participants in EDA, Receiving Support Services** - From Issuance Disbursement Summary (OMEGA report # RM703). Total number of active participants who show receipt of **Training Related Expenses** or **Child Care**.

**Participation Rate (JOBS/FDP)** - Federally mandated calculation method, dividing the number of participants whose combined and averaged weekly hours of participation in qualifying activities equals or exceeds 20 hours per week by the total number of non-exempt IV-F recipients. As of the end of the month.

**ACTIVITY FOR THE MONTH** - Number of participants with the indicated activity during the month:

**Participants with First Case Management Interview** - From Activities Summary Report (OMEGA report # RM064).

**Number of Persons Employed This Month, Still Receiving AFDC** - From Activities Summary Report (OMEGA report # RM064).

**Number of Persons Closed on FAMIS Due to Earnings** - From FAMIS report # FM463.

**Post AFDC and Receiving Child Care** - Persons no longer in receipt of AFDC, but still receiving child care. From Issuance Disbursement Summary (OMEGA report # RM703).

New Jersey Department of Human Services  
Division of Family Development

**TABLE 11**  
**GENERAL ASSISTANCE PROGRAM**  
**EMPLOYABLE AND UNEMPLOYABLE RECIPIENTS**  
**AND EMERGENCY ASSISTANCE PAYMENTS,**  
**COUNTIES AND 21 LARGEST MUNICIPALITIES**  
**January 1996**

County/ Municipality	Persons Aided			Emergency Assistance Payments		
	Employable	Unemployable	Total	Temporary Rental Assist.	Other GA-EA	Total
ATLANTIC	1,165	524	1,689	79	50	129
BERGEN	542	420	962	249	74	323
BURLINGTON	494	351	845	194	104	298
CAMDEN	2,072	1,070	3,142	325	203	528
CAPE MAY	156	94	250	34	27	61
CUMBERLAND	424	221	645	7	20	27
ESSEX	8,265	1,837	10,102	709	1,344	2,053
GLOUCESTER	141	122	263	16	14	30
HUDSON	1,131	1,136	2,267	200	36	236
HUNTERDON	47	48	95	23	19	42
MERCER	1,835	763	2,598	314	216	530
MIDDLESEX	540	512	1,052	118	58	176
MONMOUTH	778	703	1,481	381	89	470
MORRIS	144	176	320	39	37	76
OCEAN	729	414	1,143	377	177	554
PASSAIC	2,443	607	3,050	416	171	587
SALEM	120	70	190	24	17	41
SOMERSET	91	95	186	40	11	51
SUSSEX	40	24	64	16	9	25
UNION	1,915	819	2,734	828	126	954
WARREN	68	48	116	32	1	33
<b>TOTAL NJ</b>	<b>23,140</b>	<b>10,054</b>	<b>33,194</b>	<b>4,421</b>	<b>2,803</b>	<b>7,224</b>
Atlantic City	918	316	1,234	62	45	107
Mount Holly	141	72	213	45	50	95
Camden	1,703	710	2,413	199	132	331
Vineland	232	145	377	5	17	22
East Orange	576	433	1,009	262	50	312
Irvington	338	99	437	40	0	40
Montclair	184	87	271	47	18	65
Newark	6,598	1,014	7,612	340	1,201	1,541
Orange	446	55	501	0	65	65
Bayonne	120	48	168	6	0	6
Hoboken	132	112	244	25	1	26
Jersey City	685	485	1,170	99	16	115
Trenton	1,704	661	2,365	295	191	486
Perth Amboy	119	112	231	22	14	36
Asbury Park	210	118	328	101	0	101
Long Branch	200	110	310	81	28	109
Lakewood	336	124	460	186	36	222
Passaic	709	248	957	211	41	252
Paterson	1,601	231	1,832	133	100	233
Elizabeth	1,237	470	1,707	654	68	722
Plainfield	252	128	380	36	2	38
<b>Total</b>	<b>18,441</b>	<b>5,778</b>	<b>24,219</b>	<b>2,849</b>	<b>2,075</b>	<b>4,924</b>

Source: NJ Division of Family Development, GA Fiscal Unit

New Jersey Department of Human Services  
Division of Family Development

### **TABLE 3**

## **EMERGENCY ASSISTANCE RECIPIENTS**

**NUMBER OF ELIGIBLE FAMILIES RECEIVING EMERGENCY ASSISTANCE PAYMENTS  
(UNDUPLICATED CASES)**

**April 1996 (revised)**

County	AFDC Families Receiving Emergency Assistance					SSI Recipients Receiving EA
	TOTAL AFDC -EA	Temporary Rental Assist	Motel Housing	Emergency Shelter	Other AFDC-EA	
ATLANTIC	117	39	14	21	43	50
BERGEN	450	238	44	30	138	21
BURLINGTON	41	2	1	30	8	2
CAMDEN	252	77	3	21	151	19
CAPE MAY	31	8	3	1	19	7
CUMBERLAND	22	1	0	13	8	9
ESSEX	1,381	568	7	75	731	46
GLOUCESTER	81	31	1	28	21	3
HUDSON	109	17	5	6	81	6
HUNTERDON	11	2	1	2	6	0
MERCER	199	94	17	12	76	7
MIDDLESEX	689	382	26	25	256	43
MONMOUTH	252	117	46	3	86	12
MORRIS	27	1	1	8	17	8
OCEAN	350	126	81	2	141	64
PASSAIC	661	3	5	24	629	64
SALEM	41	10	11	2	18	5
SOMERSET	164	16	11	27	110	14
SUSSEX	30	1	12	4	13	8
UNION	186	27	4	28	127	21
WARREN	24	0	16	2	6	5
NJ TOTAL	5,118	1,760	309	364	2,685	414

Data Sources: Derived from NJ Division of Family Development FAMIS Reports #FM 457 and #FM 430-03a.