

November 2023 Traffic Report

AVIATION DEPARTMENT (Data As Of 1/3/2024 11:01:26 AM)

REGION



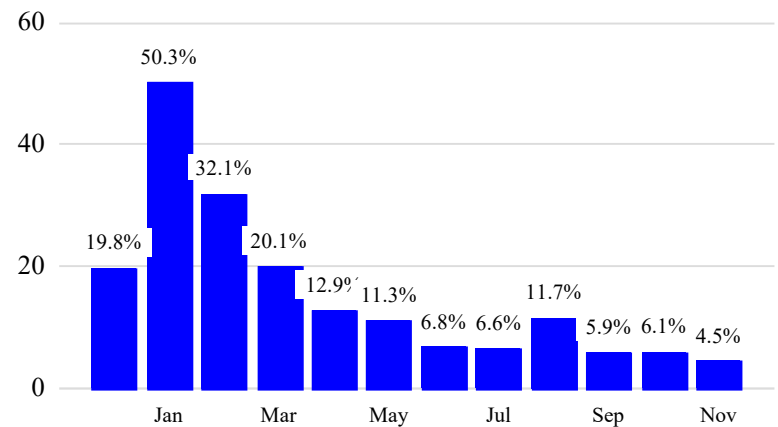
Revenue Passengers

	Curr Month	% Change
	11,650,473	4.5% ▲
Domestic	8,015,619	2.0%
International	3,634,854	10.6%
Non-Revenue	298,560	-0.9%

Load Factors	Curr Month
Domestic	85.6%
International	78.8%

83.3% Avg Load Factor

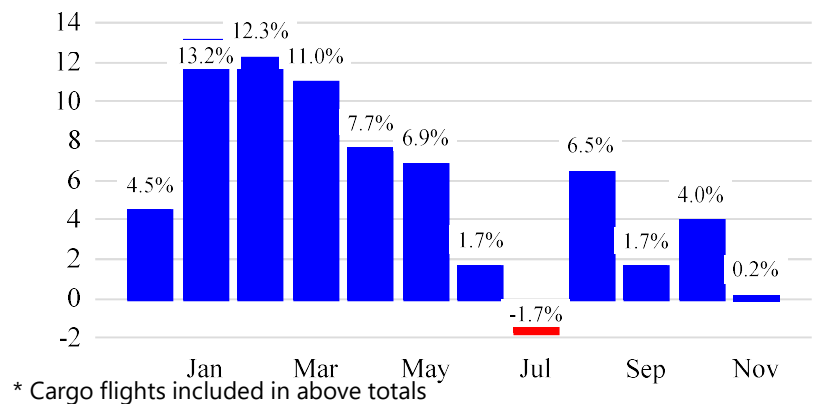
Year over Year % Change in Revenue Passengers - 12 Months



Total Flights

	Curr Month	% Change
	105,034	0.4% ▲
Excl GA	99,711	0.2% ▲
Domestic	74,907	-3.5%
International	24,804	13.5%
Gen Aviation	5,323	4.4%
Cargo Flights*	3,382	-3.0%

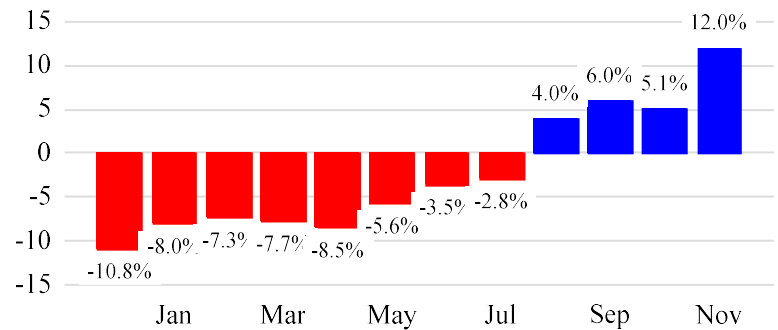
Year over Year % Change in Total Flights (Excl GA) - 12 Months



Cargo (Short Tons)

	Curr Month	% Change
	214,993	12.0% ▲
Domestic	94,279	12.8%
International	120,714	11.5%
Mail	8,240	-28.3%

Year over Year % Change in Cargo - 12 Months



Top 5 Declines in Revenue Passengers by Airline

Airline	Pax Decline	% Decline
JETBLUE AIRWAYS	(185,533)	-10.0%
AMERICAN	(51,069)	-4.0%
NORSE ATLANTIC	(11,455)	-61.0%
LAN AIRLINES	(11,137)	-45.0%
WESTJET	(9,586)	-55.0%

Top 5 Increases in Revenue Passengers by Airline

Airline	Pax Increase	% Increase
DELTA	281,847	11.0%
UNITED	134,687	5.0%
SPIRIT AIRLINES	66,619	17.0%
CATHAY PACIFIC	29,022	223.0%
QATAR AIRWAYS	24,912	76.0%

November 2023 Traffic Report

AVIATION DEPARTMENT (Data As Of 1/3/2024 11:01:26 AM)

REGION



Airport Summary Statistics

JFK Summary

	Current Month	YoY %
Total Revenue Pax	4,880,767	3.0
Total Flights Including GA	38,936	1.0
Total Cargo (Short Tons)	147,874	17.1

EWR Summary

	Current Month	YoY %
Total Revenue Pax	3,945,910	4.0
Total Flights Including GA	34,060	0.0
Total Cargo (Short Tons)	64,474	2.4

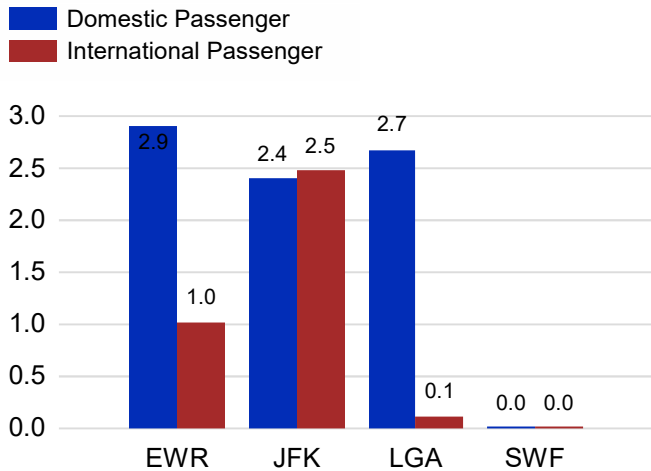
LGA Summary

	Current Month	YoY %
Total Revenue Pax	2,806,517	5.0
Total Flights Including GA	29,913	-1.0
Total Cargo (Short Tons)	503	-14.7

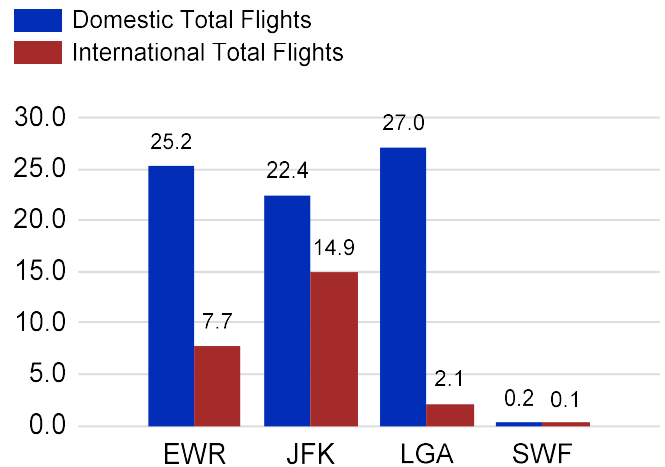
SWF Summary

	Current Month	YoY %
Total Revenue Pax	17,279	-23.0
Total Flights Including GA	2,125	4.0
Total Cargo (Short Tons)	2,142	1.8

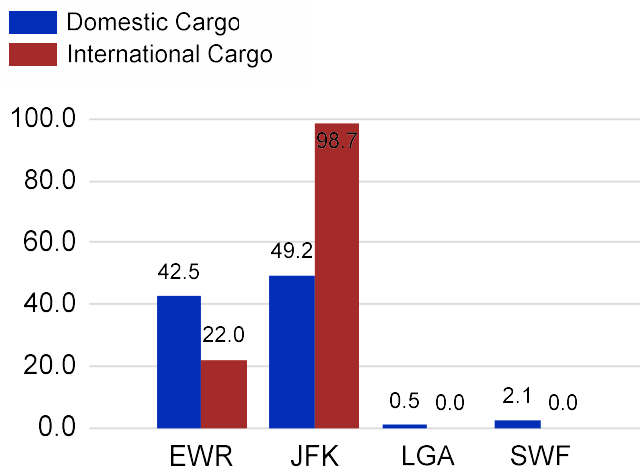
Total Passengers by Airport (Millions)



Total Flights by Airport (Thousands)



Total Cargo by Airport (Thousands of Short Tons)



12 Months Ending Passenger & Freight Statistics

Top 20 Airlines Ranking by Passengers & Freight: 12 Months Ending Nov 2023

Airline Name	Domestic	International	Total Pax	% of Tot	Airline Name	Short Tons	% of Tot
UNITED	27,449,952	8,183,524	35,633,476	24.81%	FEDERAL EXPRESS	371,348	16.20%
DELTA	27,016,869	6,219,276	33,236,145	23.14%	UNITED PARCEL	193,493	8.44%
JETBLUE AIRWAYS	15,475,787	6,619,665	22,095,452	15.38%	UNITED	181,605	7.92%
AMERICAN	13,809,111	3,615,717	17,424,828	12.13%	DELTA	103,275	4.50%
SPIRIT AIRLINES	4,643,450	0	4,643,450	3.23%	KALITTA AIR LLC	103,031	4.49%
SOUTHWEST AIRLINES	3,131,181	0	3,131,181	2.18%	AMERICAN	82,898	3.62%
ALASKA AIRLINES	2,432,806	0	2,432,806	1.69%	AIR TRANSPORT INT'L.(BAX Inc.)	78,584	3.43%
AIR CANADA	0	1,759,087	1,759,087	1.22%	ATLAS AIR	75,607	3.30%
BRITISH AIRWAYS	0	1,652,360	1,652,360	1.15%	BRITISH AIRWAYS	53,636	2.34%
AIR FRANCE	313	1,206,325	1,206,638	0.84%	KOREAN	49,496	2.16%
EMIRATES AIRLINES	0	1,093,136	1,093,136	0.76%	CARGOLUX AIRLINES	47,694	2.08%
VIRGIN ATLANTIC	0	1,018,928	1,018,928	0.71%	CATHAY PACIFIC	46,186	2.01%
AVIANCA	0	917,955	917,955	0.64%	CHINA AIRLINES (CAL)	44,474	1.94%
LUFTHANSA	0	865,844	865,844	0.60%	ABX AIR INC	42,191	1.84%
AER LINGUS	0	748,594	748,594	0.52%	VIRGIN ATLANTIC	36,340	1.58%
TURKISH AIR	0	737,577	737,577	0.51%	AIR CHINA (CARGO)	31,665	1.38%
EL AL	254	598,732	598,986	0.42%	LUFTHANSA CARGO	31,320	1.37%
SAS	0	560,707	560,707	0.39%	ASIANA	31,133	1.36%
LAN AIRLINES	0	558,006	558,006	0.39%	CHINA CARGO AIRLINES	30,986	1.35%
IBERIA	0	557,063	557,063	0.39%	AIR FRANCE	29,633	1.29%

Passengers & Freight by Market - 12 Months Ending

Market	Passengers	Freight (Short Tons)
TRANSATLANTIC	26,414,652	843,233
CANADA	4,225,788	8,927
CARIBBEAN + BERMUDA	8,446,236	11,418
CENTRAL AND SOUTH AMERICA	4,352,563	59,798
DOMESTIC	92,553,294	966,557
MEXICO	2,419,296	12,311
TRANSPACIFIC	2,728,595	382,680
PUERTO RICO	2,499,434	7,931

November 2023 Traffic Report

AVIATION DEPARTMENT (Data As Of 1/3/2024 11:01:26 AM)

REGION



Additional Data

Airline Schedules (ADI): Non-Stop Destinations

	Region	Flights (Daily)	Cities
Domestic	Domestic	2361.9	104
	Puerto Rico	33.1	3
	Total	2,395.0	107.00
International	Canada	174.0	8
	Caribbean & Bermuda	154.5	24
	Central & South America	75.9	18
	Mexico	44.9	6
	Transatlantic	309.9	53
	Transpacific	35.6	10
	Total	794.9	119.00
Total		3,189.8	226.00

Airline Schedules (ADI): Carriers & Aircraft Type

	Aircraft Type	Flights (Daily)	Carriers
Domestic	Commuter	861.6	4
	Narrow Body	1479.1	10
	Wide Body	54.2	4
	Total	2,395.0	18.00
International	Commuter	166.3	5
	Narrow Body	295.7	21
	Unknown	1.1	1
	Wide Body	331.7	58
	Total	794.9	85.00
Total	Total	3,189.8	103.00

Passenger Demographics (ACI ASQ Surveys - 2021)

Connect		Trip Type		Gender	
Local Origin/Destination	78.6%	Business	14.0%	M	49.6%
Connecting	21.4%	Leisure	86.0%	F	50.4%
Transport Mode		Annual Flights		Residency	
Bus/Shuttle	4.7%	1-2	61.5%	United States	81.0%
Other	18.7%	3-5	24.9%	Other	19.0%
Private/Company Car	37.5%	6-10	9.0%		
Rail/Subway	7.3%	11-20	2.8%		
Rental Car	4.6%	21+	1.8%		
Taxi/Limo	27.2%				

Ground Transportation

	Curr Month	% Change		Curr Month	% Change
<i>Paid Parked Cars</i>	286,832	-14.9	<i>Total Air Train Passengers</i>	2,648,663	17.6
<i>GTC Bookings</i>	0		<i>Paid Howard Beach Passengers</i>	120,066	-13.7
<i>Airport Coach Passengers</i>	34,154	1.2	<i>Paid Jamaica Passengers</i>	592,860	30.9
<i>Taxis Dispatched</i>	326,198	-13.7	<i>Paid EWR Passengers</i>	233,228	6.8
			<i>On-Airport (Unpaid) Passengers</i>	1,702,509	18.1

Airlines for American Carriers (USA)

	Curr Month	% Change
<i>Freight:revenue ton miles (000)</i>	0	

Regional Airports: Other

	Curr Month	% Change
<i>TEB flight movements</i>	15,732	-0.3
<i>ISP Total passengers</i>	117,534	27.4
<i>HPN Total passengers</i>	184,119	11.0