

March 2022 Traffic Report

AVIATION DEPARTMENT (Data As Of 5/3/2022 2:54:19 PM)

REGION



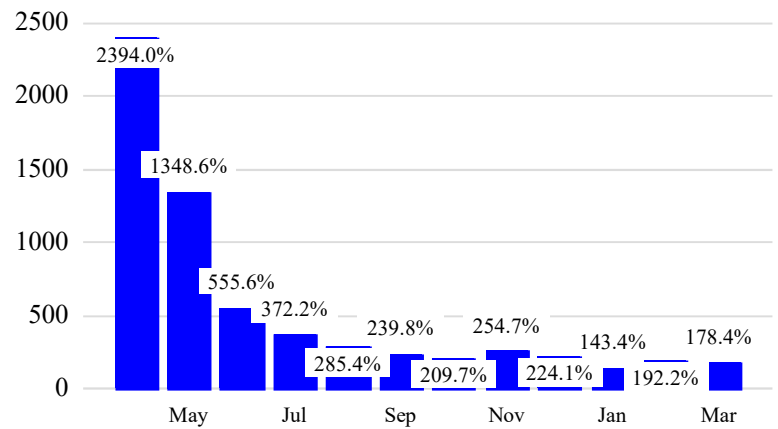
Revenue Passengers

	Curr Month	% Change
	10,103,141	178.4% ▲
Domestic	7,500,537	170.3%
International	2,602,604	204.8%
Non-Revenue	283,758	109.0%

Load Factors	Curr Month
Domestic	77.3%
International	70.9%

75.6% Avg Load Factor

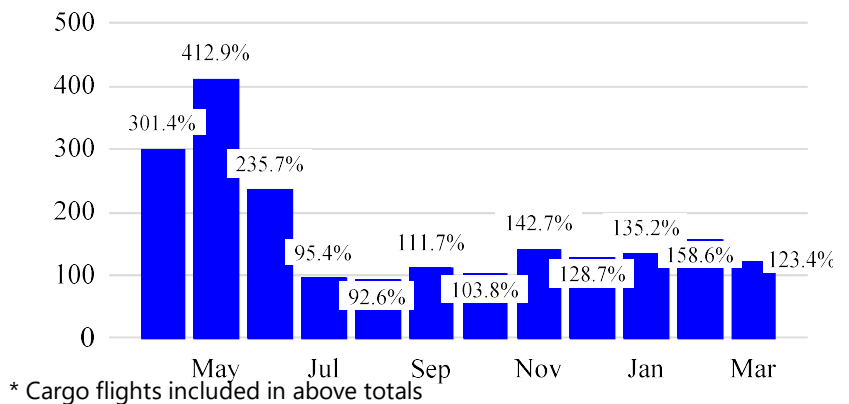
Year over Year % Change in Revenue Passengers - 12 Months



Total Flights

	Curr Month	% Change
	101,114	118.3% ▲
Excl GA	98,223	123.4% ▲
Domestic	79,911	140.1%
International	18,312	71.3%
Gen Aviation	2,891	22.4%
Cargo Flights*	4,072	-4.6%

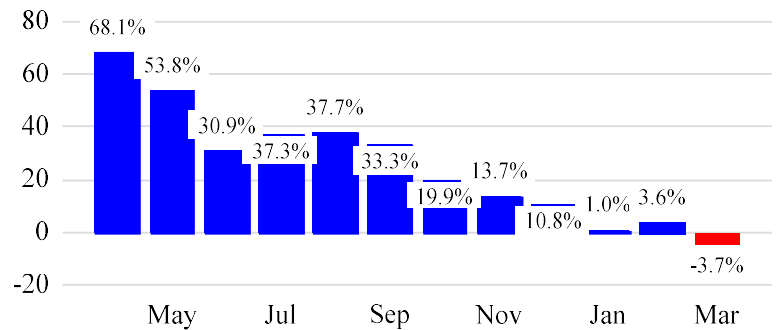
Year over Year % Change in Total Flights (Excl GA) - 12 Months



Cargo (Short Tons)

	Curr Month	% Change
	192,750	-3.7% ▼
Domestic	88,956	-3.7%
International	103,794	-3.6%
Mail	11,725	-11.6%

Year over Year % Change in Cargo - 12 Months



Top 5 Declines in Revenue Passengers by Airline

Airline	Pax Decline	% Decline
FRONTIER AIRLINES	(41,957)	-53.0%
EASTERN	(2,740)	-81.0%
CHINA EASTERN	(1,296)	-43.0%
ETHIOPIAN AIRLINES	(1,152)	-20.0%
CATHAY PACIFIC	(949)	-88.0%

Top 5 Increases in Revenue Passengers by Airline

Airline	Pax Increase	% Increase
DELTA	1,697,794	249.0%
UNITED	1,525,053	148.0%
AMERICAN	1,103,504	261.0%
JETBLUE AIRWAYS	898,996	109.0%
ALASKA AIRLINES	153,293	558.0%

Airport Summary Statistics

JFK Summary

	Current Month	YoY %
Total Revenue Pax	4,212,363	227.0
Total Flights Including GA	35,681	118.0
Total Cargo (Short Tons)	119,331	-4.4

EWR Summary

	Current Month	YoY %
Total Revenue Pax	3,481,957	112.0
Total Flights Including GA	33,591	79.0
Total Cargo (Short Tons)	70,460	-2.9

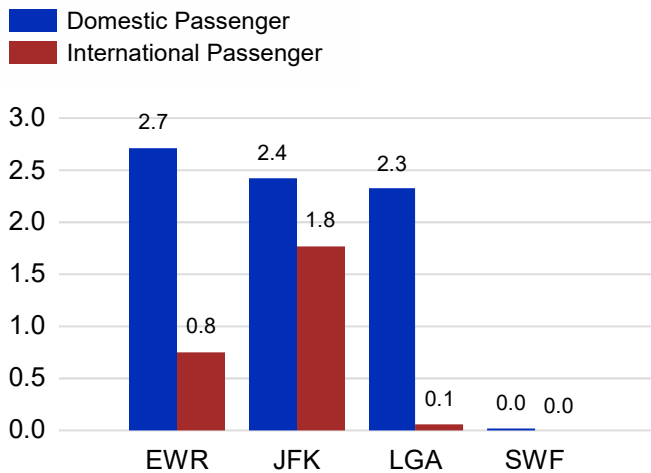
LGA Summary

	Current Month	YoY %
Total Revenue Pax	2,386,465	241.0
Total Flights Including GA	29,828	223.0
Total Cargo (Short Tons)	578	16.6

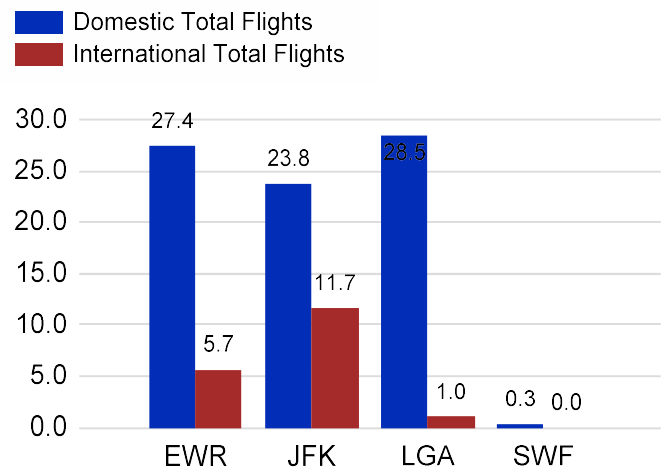
SWF Summary

	Current Month	YoY %
Total Revenue Pax	22,356	239.0
Total Flights Including GA	2,014	-3.0
Total Cargo (Short Tons)	2,381	5.5

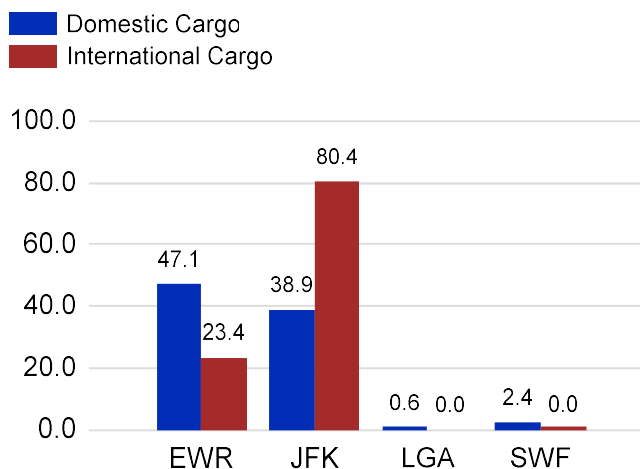
Total Passengers by Airport (Millions)



Total Flights by Airport (Thousands)



Total Cargo by Airport (Thousands of Short Tons)



12 Months Ending Passenger & Freight Statistics

Top 20 Airlines Ranking by Passengers & Freight: 12 Months Ending Mar 2022

Airline Name	Domestic	International	Total Pax	% of Tot	Airline Name	Short Tons	% of Tot
UNITED	17,886,568	5,030,718	22,917,286	25.24%	FEDERAL EXPRESS	440,803	18.55%
DELTA	18,324,132	2,985,530	21,309,662	23.47%	UNITED	219,615	9.24%
JETBLUE AIRWAYS	12,294,682	4,793,377	17,088,059	18.82%	UNITED PARCEL	213,891	9.00%
AMERICAN	10,650,052	1,605,068	12,255,120	13.49%	DELTA	97,170	4.09%
SPIRIT AIRLINES	3,122,139	0	3,122,139	3.44%	KALITTA AIR LLC	84,478	3.55%
SOUTHWEST AIRLINES	1,922,287		1,922,287	2.12%	AMERICAN	81,387	3.42%
ALASKA AIRLINES	1,315,326		1,315,326	1.45%	ATLAS AIR	79,025	3.33%
FRONTIER AIRLINES	972,347	54,549	1,026,896	1.13%	AIR TRANSPORT INT'L.(BAX Inc.)	75,061	3.16%
EMIRATES AIRLINES		588,551	588,551	0.65%	KOREAN	64,500	2.71%
TURKISH CARGO		553,177	553,177	0.61%	CARGOLUX AIRLINES	62,029	2.61%
AIR CANADA		544,470	544,470	0.60%	CHINA AIRLINES (CAL)	57,051	2.40%
Avianca Costa Rica		488,951	488,951	0.54%	ABX AIR INC	51,497	2.17%
BRITISH AIRWAYS		413,675	413,675	0.46%	CATHAY PACIFIC	46,961	1.98%
AIR FRANCE		399,917	399,917	0.44%	LUFTHANSA CARGO	36,178	1.52%
LUFTHANSA CARGO		377,907	377,907	0.42%	SAUDI ARABIAN AIRLINES	31,609	1.33%
QATAR AIRWAYS		365,739	365,739	0.40%	TURKISH AIR	30,902	1.30%
COPA AIRLINES		360,758	360,758	0.40%	VIRGIN ATLANTIC	29,432	1.24%
AEROMEXICO		312,464	312,464	0.34%	AIR FRANCE	27,408	1.15%
EL AL		302,932	302,932	0.33%	BRITISH AIRWAYS	27,314	1.15%
VIRGIN ATLANTIC		297,750	297,750	0.33%	EVA	26,545	1.12%

Passengers & Freight by Market - 12 Months Ending

Market	Passengers	Freight (Short Tons)
TRANSATLANTIC	10,758,758	868,139
CANADA	785,911	6,169
CARIBBEAN + BERMUDA	6,732,208	14,862
CENTRAL AND SOUTH AMERICA	3,151,897	50,577
DOMESTIC	64,548,414	1,041,737
MEXICO	2,022,546	10,374
TRANSPACIFIC	399,263	374,974
PUERTO RICO	2,414,358	9,676

Additional Data

Airline Schedules (ADI): Non-Stop Destinations

	Region	Flights (Daily)	Cities
Domestic	Domestic	2477.5	111
	Puerto Rico	31.3	3
	Total	2,508.8	114.00
International	Canada	76.7	5
	Caribbean & Bermuda	151.9	24
	Central & South America	78.9	19
	Mexico	39.6	5
	Trans-Atlantic	219.3	52
	Trans-Pacific	14.7	7
	Total	581.1	112.00
Total	3,089.9	226.00	

Airline Schedules (ADI): Carriers & Aircraft Type

	Aircraft Type	Flights (Daily)	Carriers
Domestic	Commuter	1006.8	4
	General Aviation	4.0	1
	Narrow Body	1409.1	9
	Wide Body	88.9	4
	Total	2,508.8	18.00
International	Commuter	64.6	5
	Narrow Body	285.5	22
	Wide Body	231.0	50
	Total	581.1	77.00
Total	Total	3,089.9	95.00

Passenger Demographics (ACI ASQ Surveys - 2021)

Connect		Trip Type		Gender	
Local Origin/Destination	78.6%	Business	14.0%	M	49.6%
Connecting	21.4%	Leisure	86.0%	F	50.4%
Transport Mode		Annual Flights		Residency	
Bus/Shuttle	4.7%	1-2	61.5%	United States	81.0%
Other	18.7%	3-5	24.9%	Other	19.0%
Private/Company Car	37.5%	6-10	9.0%		
Rail/Subway	7.3%	11-20	2.8%		
Rental Car	4.6%	21+	1.8%		
Taxi/Limo	27.2%				

Ground Transportation

	Curr Month	% Change		Curr Month	% Change
<i>Paid Parked Cars</i>	368,638	105.2	<i>Total Air Train Passengers</i>	1,963,190	155.6
<i>GTC Bookings</i>	0		<i>Paid Howard Beach Passengers</i>	90,990	202.7
<i>Airport Coach Passengers</i>	22,334		<i>Paid Jamaica Passengers</i>	375,440	269.3
<i>Taxis Dispatched</i>	345,122	270.5	<i>Paid EWR Passengers</i>	159,563	188.3
			<i>On-Airport (Unpaid) Passengers</i>	1,337,197	130.1

Airlines for American Carriers (USA)

	Curr Month	% Change
<i>Freight:revenue ton miles (000)</i>	0	

Regional Airports: Other

	Curr Month	% Change
<i>TEB flight movements</i>	1,030	-88.2
<i>ISP Total passengers</i>	0	-100.0
<i>HPN Total passengers</i>	129,935	84.9