



State of New Jersey

25-1490-050

OVERVIEW

FARMINGDALE ELEMENTARY
ACADEMY ST PO BOX 706
FARMINGDALE, NJ 07727-0706

MONMOUTH

GRADE SPAN PK-08

FARMINGDALE BORO

This school's academic performance is **very high when compared** to schools across the state. Additionally, its academic performance is **high when compared** to its peers. This school's college and career readiness is **very high when compared** to schools across the state. Additionally, its college and career readiness is **very high when compared** to its peers. This school's student growth performance is **high when compared** to schools across the state. Additionally, its student growth performance is **high when compared** to its peers.

Performance Areas	Peer Rank (Percentile)	Statewide Rank (Percentile)	Percent of Targets Met
Academic Achievement	76	83	100%
College and Career Readiness	100	99	100%
Student Growth	79	77	100%

Improvement Status

N/A

Rationale

N/A

Very High Performance is defined as being equal to or above the 80.0th percentile.

High Performance is defined as being between the 60.0th and 79.9th percentiles.

Average Performance is defined as being between the 40.0th and 59.9th percentiles.

Lagging Performance is defined as being between the 20.0th and 39.9th percentiles.

Significantly Lagging Performance is defined as being equal to or below the 19.9th percentile.

Peer Schools are schools that have similar grade levels and students with similar demographic characteristics, such as the percentage of students qualifying for Free/Reduced Lunch, Limited English Proficiency programs or Special Education programs.

Academic Achievement

This school outperforms **83%** of schools statewide as noted by its statewide percentile ranking and **76%** of schools educating students with similar demographic characteristics as noted in its peer school percentile ranking in the performance area of Academic Achievement. Additionally, this school is meeting **100%** of its performance targets in the area of Academic Achievement.



Academic Achievement measures the content knowledge students have in language arts literacy and math. For elementary and middle schools, this includes measures of the school's proficiency rate on both the Language Arts Literacy and Math sections of the New Jersey Assessment of Skills and Knowledge (NJ ASK). A proficiency rate is calculated by summing the count of students who scored either proficient or advanced proficient on the assessment and dividing by the count of valid test scores.

College and Career Readiness

This school outperforms **99%** of schools statewide as noted by its statewide percentile ranking and **100%** of schools educating students with similar demographic characteristics as noted in its peer school percentile ranking in the performance area of College and Career Readiness. Additionally, this school is meeting **100%** of its performance targets in the area of College and Career Readiness.



College and Career readiness measures the degree to which students are demonstrating behaviors that are indicative of future attendance and/or success in college and careers. For all elementary and middle schools, this includes a measurement of how many students are chronically absent. For schools with middle school grades, it also includes a measurement of how many students take Algebra I in either seventh or eighth grade.

Student Growth

This school outperforms **77%** of schools statewide as noted by its statewide percentile ranking and **79%** of schools educating students with similar demographic characteristics as noted in its peer school percentile ranking in the performance area of Student Growth. Additionally, this school is meeting **100%** percentage of its performance targets in the area of Student Growth.



Student Growth measures the performance of students from one year to the next on the New Jersey Assessment of Skills and Knowledge (NJ ASK) in Language Arts Literacy and Math when compared to students with a similar history of performance on NJ-ASK.



DEMOGRAPHIC INFORMATION

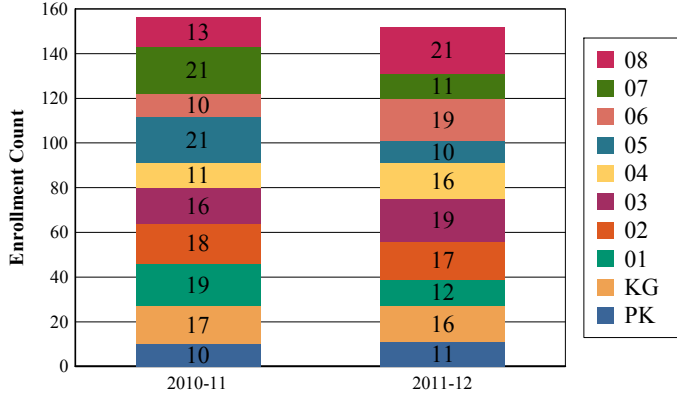
MONMOUTH

FARMINGDALE BORO

GRADE SPAN PK-08

Enrollment by Grade

This graph presents the count of students who were 'on roll' by grade in October of each school year.

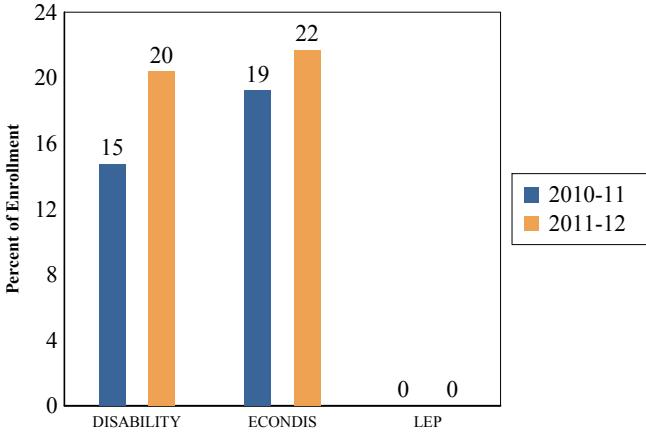


Total School Enrollment Trends

Note: "UG" represents the count of students who are 'on roll' in this school but who are educated in ungraded classrooms, meaning that the classrooms may contain students from multiple grade levels.

Total School Enrollment	
2010-11	156
2011-12	152

Enrollment Trends by Program Participation



Current Year Enrollment by Program Participation

2011-2012	Count of Students	% of Enrollment
Students with Disability	31	20%
Economically Disadvantaged Students	33	21.7%
Limited English Proficient Students	0	0.0%

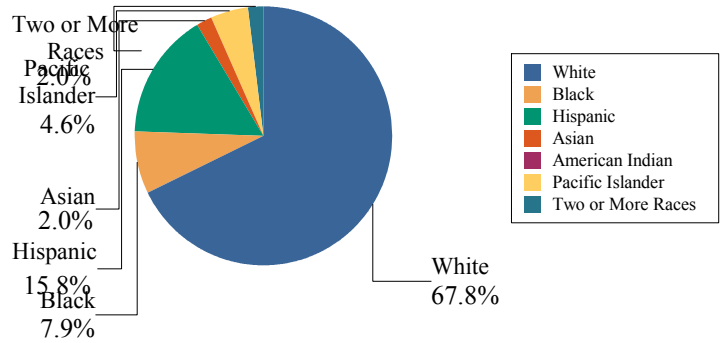
Language Diversity

This table presents the percentage of students who primarily speak each language in their home.

2011-12	Percent
English	96.8%
Spanish	1.9%
Hindi	1.3%

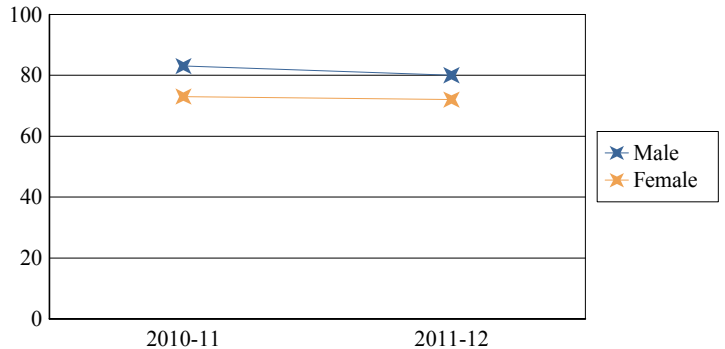
Enrollment by Ethnic/Racial Subgroup

This graph presents the percentages of enrollment for each subgroup defined by the No Child Left Behind Act of 2001



Enrollment by Gender

This graph presents the count of students by gender who were 'on roll' in October of each school year.



	Male	Female
2010-11	83	73
2011-12	80	72



State of New Jersey

25-1490-050

ACADEMIC ACHIEVEMENT

MONMOUTH

FARMINGDALE BORO

GRADE SPAN PK-08

FARMINGDALE ELEMENTARY

ACADEMY ST PO BOX 706

FARMINGDALE, NJ 07727-0706

Academic Achievement measures the content knowledge students have in language arts literacy and math. In elementary and middle school, this includes the outcomes of the New Jersey Assessment of Skills and Knowledge (NJASK). The first column - Schoolwide Performance - in the table below includes measures of the total schoolwide proficiency rate in both language arts literacy and math across multiple administrations of the assessment. The second column - Peer School Percentile Rank - indicates where the school's proficiency rate compares to its group of peer schools. For example, a school that has a peer school percentile rank of 65 has a proficiency rate that is higher than 65% of its peer schools. The third column - Statewide Percentile Rank - indicates where the school's proficiency rate compares to schools across the state. For example, a school that has a statewide percentile rank of 30 has a proficiency rate that is higher than 30% of all schools with HSPA scores statewide. The last column - Percent of Targets Met - presents the percentage of progress targets met as defined by the NJDOE's NCLB waiver.

The Summary row presents the averages of the peer school percentile ranks, the average of statewide percentile ranks and the percentage of statewide targets met.

Academic Achievement Indicators	Schoolwide Performance	Peer Rank (Percentile)	State Rank (Percentile)	Percent of Targets Met
NJASK Language Arts Proficiency and above	79%	52	72	100%
NJASK Math Proficiency and above	91%	100	93	100%
SUMMARY - Academic Achievement		76	83	100%

NCLB Progress Targets - Language Arts Literacy

This table presents the Progress Targets as uniquely calculated for each subgroup in each school under NJDOE's NCLB waiver. The methodology - as defined by the United States Department of Education - is calculated so that each subgroup will halve the gap between their 2011 proficiency rate and 100% proficiency by 2017.

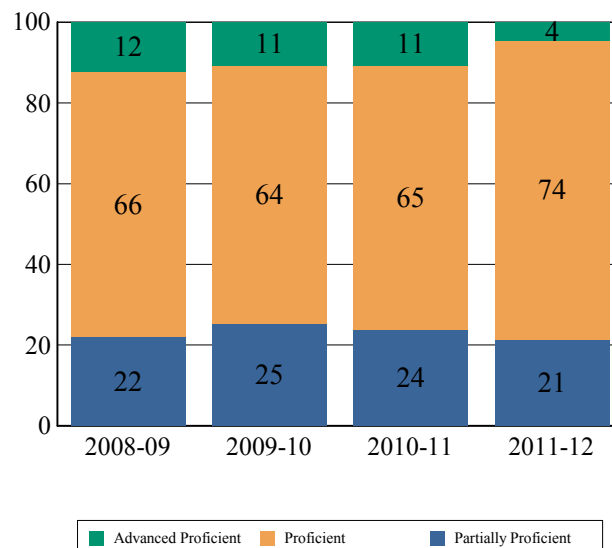
Subgroups	Total Valid Scores	Pass Rate	Target	Met Target?
Schoolwide	89	78.7	78.2	YES
White	65	81.6	77.5	YES
Black	-	-	-	--
Hispanic	-	-	-	--
American Indian	-	-	-	--
Asian	-	-	-	--
Two or More Races	-	-	-	--
Students with Disability	-	-	-	--
Limited English Proficient Students	-	-	-	--
Economically Disadvantaged Students	-	-	-	--

YES* = Met Progress Target(Confidence Interval Applied)

Data is presented for subgroups when the count is high enough under NCLB suppression rules.

Proficiency Trends - Language Arts Literacy

This graph presents the percentage of students who scored in the Advanced Proficient, Proficient and Partially Proficient categories of the statewide Language Arts Literacy assessment over the prior four years.





ACADEMIC ACHIEVEMENT

MONMOUTH

FARMINGDALE BORO

GRADE SPAN PK-08

NCLB Progress Targets - Math

This table presents the Progress Targets as uniquely calculated for each subgroup in each school under NJDOE's NCLB waiver. The methodology - as defined by the United States Department of Education - is calculated so that each subgroup will halve the gap between their 2011 proficiency rate and 100% proficiency by 2017.

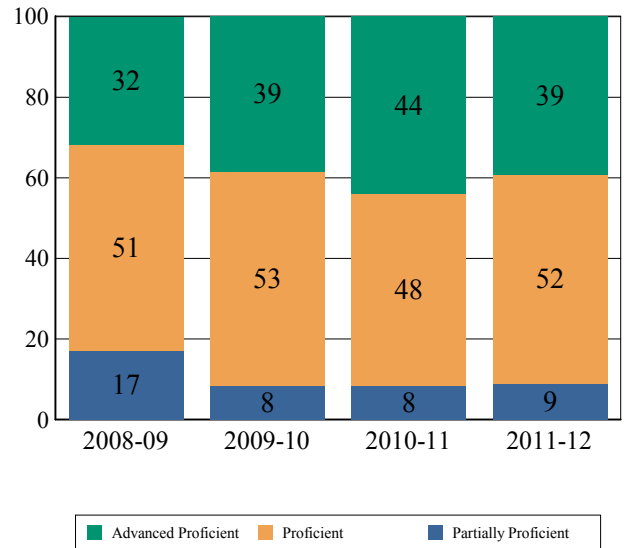
Subgroups	Total Valid Scores	Pass Rate	Target	Met Target?
Schoolwide	89	91	90	YES
White	65	93.8	90	YES
Black	-	-		--
Hispanic	-	-		--
American Indian	-	-		--
Asian	-	-		--
Two or More Races	-	-		--
Students with Disability	-	-		--
Limited English Proficient Students	-	-		--
Economically Disadvantaged Students	-	-		--

YES* = Met Progress Target(Confidence Interval Applied)

Data is presented for subgroups when the count is high enough under NCLB suppression rules.

Proficiency Trends - Math

This graph presents the percentage of students who scored in the Advanced Proficient, Proficient and Partially Proficient categories of the statewide Math assessment over the prior four years.





ACADEMIC ACHIEVEMENT

MONMOUTH

FARMINGDALE BORO

GRADE SPAN PK-08

25-1490-050

FARMINGDALE ELEMENTARY

ACADEMY ST PO BOX 706

FARMINGDALE, NJ 07727-0706

NJASK Results - Language Arts Literacy Grade Level - 03

This table presents the grade level proficiency results, as measured by NJASK, in Advanced Proficient, Proficient, and Partially Proficient categories for all appropriate subgroups.

Subgroups	Advanced Proficient	Proficient	Partially Proficient
Schoolwide	0%	94%	6%
White	0%	100%	0%
Black	-	-	-
Hispanic	-	-	-
American Indian	N/A	N/A	N/A
Asian	N/A	N/A	N/A
Two or More Races	N/A	N/A	N/A
Students w/ Disability	-	-	-
Limited English Proficient Students	N/A	N/A	N/A
Economically Disadvantaged Students	-	-	-

Data is presented for subgroups when the count is high enough under NCLB suppression rules.

NJASK Results - Language Arts Literacy Grade Level - 04

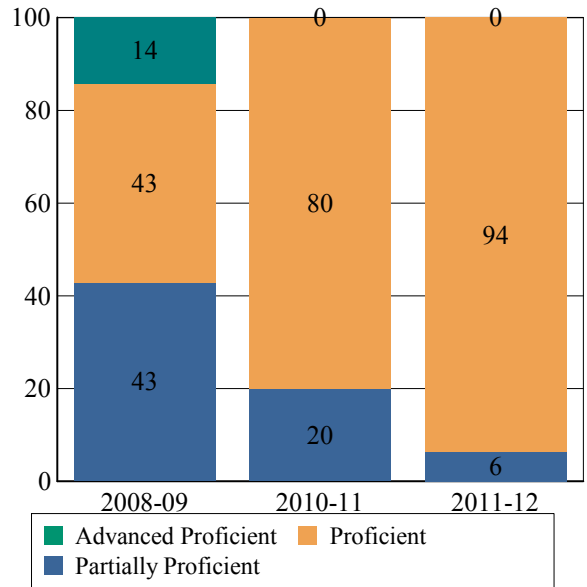
This table presents the grade level proficiency results, as measured by NJASK, in Advanced Proficient, Proficient, and Partially Proficient categories for all appropriate subgroups.

Subgroups	Advanced Proficient	Proficient	Partially Proficient
Schoolwide	0%	69%	31%
White	0%	77%	23%
Black	N/A	N/A	N/A
Hispanic	-	-	-
American Indian	N/A	N/A	N/A
Asian	-	-	-
Two or More Races	N/A	N/A	N/A
Students w/ Disability	-	-	-
Limited English Proficient Students	N/A	N/A	N/A
Economically Disadvantaged Students	-	-	-

Data is presented for subgroups when the count is high enough under NCLB suppression rules.

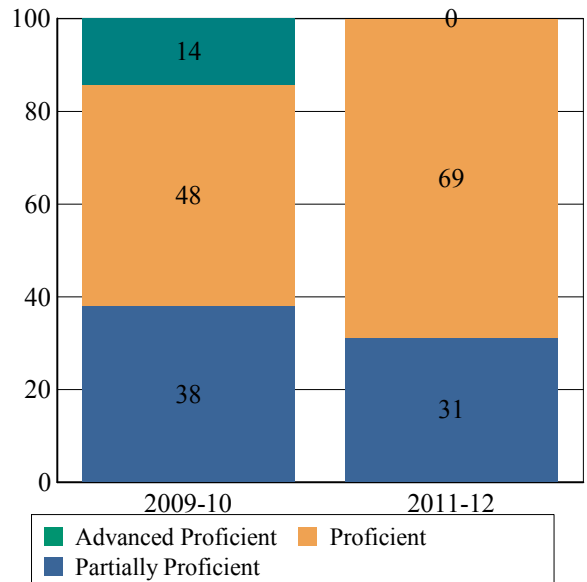
NJASK Proficiency Trends - Language Arts Literacy - Grade Level - 03

This graph presents the grade level outcomes in the categories of Advanced Proficient, Proficient, and Partially Proficient over the last four years.



NJASK Proficiency Trends - Language Arts Literacy - Grade Level - 04

This graph presents the grade level outcomes in the categories of Advanced Proficient, Proficient, and Partially Proficient over the last four years.





ACADEMIC ACHIEVEMENT

**MONMOUTH
FARMINGDALE BORO**

GRADE SPAN PK-08

25-1490-050

**FARMINGDALE ELEMENTARY
ACADEMY ST PO BOX 706
FARMINGDALE, NJ 07727-0706**

NJASK Results - Language Arts Literacy Grade Level - 05

This table presents the grade level proficiency results, as measured by NJASK, in Advanced Proficient, Proficient, and Partially Proficient categories for all appropriate subgroups.

Subgroups	Advanced Proficient	Proficient	Partially Proficient
Schoolwide	-	-	-
White	-	-	-
Black	-	-	-
Hispanic	-	-	-
American Indian	N/A	N/A	N/A
Asian	N/A	N/A	N/A
Two or More Races	N/A	N/A	N/A
Students w/ Disability	-	-	-
Limited English Proficient Students	N/A	N/A	N/A
Economically Disadvantaged Students	-	-	-

Data is presented for subgroups when the count is high enough under NCLB suppression rules.

NJASK Results - Language Arts Literacy Grade Level - 06

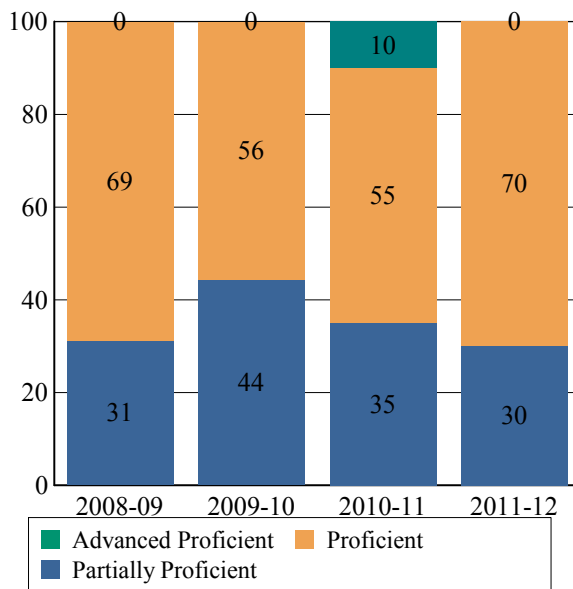
This table presents the grade level proficiency results, as measured by NJASK, in Advanced Proficient, Proficient, and Partially Proficient categories for all appropriate subgroups.

Subgroups	Advanced Proficient	Proficient	Partially Proficient
Schoolwide	16%	63%	21%
White	15%	69%	15%
Black	-	-	-
Hispanic	-	-	-
American Indian	N/A	N/A	N/A
Asian	-	-	-
Two or More Races	N/A	N/A	N/A
Students w/ Disability	-	-	-
Limited English Proficient Students	N/A	N/A	N/A
Economically Disadvantaged Students	-	-	-

Data is presented for subgroups when the count is high enough under NCLB suppression rules.

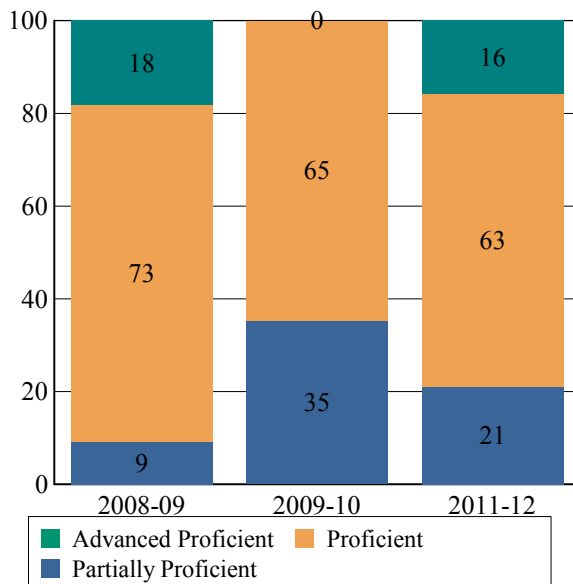
NJASK Proficiency Trends - Language Arts Literacy - Grade Level - 05

This graph presents the grade level outcomes in the categories of Advanced Proficient, Proficient, and Partially Proficient over the last four years.



NJASK Proficiency Trends - Language Arts Literacy - Grade Level - 06

This graph presents the grade level outcomes in the categories of Advanced Proficient, Proficient, and Partially Proficient over the last four years.





ACADEMIC ACHIEVEMENT

MONMOUTH

FARMINGDALE BORO

GRADE SPAN PK-08

NJASK Results - Language Arts Literacy Grade Level - 07

This table presents the grade level proficiency results, as measured by NJASK, in Advanced Proficient, Proficient, and Partially Proficient categories for all appropriate subgroups.

Subgroups	Advanced Proficient	Proficient	Partially Proficient
Schoolwide	-	-	-
White	-	-	-
Black	N/A	N/A	N/A
Hispanic	-	-	-
American Indian	N/A	N/A	N/A
Asian	-	-	-
Two or More Races	N/A	N/A	N/A
Students w/ Disability	-	-	-
Limited English Proficient Students	N/A	N/A	N/A
Economically Disadvantaged Students	-	-	-

Data is presented for subgroups when the count is high enough under NCLB suppression rules.

NJASK Results - Language Arts Literacy Grade Level - 08

This table presents the grade level proficiency results, as measured by NJASK, in Advanced Proficient, Proficient, and Partially Proficient categories for all appropriate subgroups.

Subgroups	Advanced Proficient	Proficient	Partially Proficient
Schoolwide	0%	80%	20%
White	0%	76%	24%
Black	N/A	N/A	N/A
Hispanic	-	-	-
American Indian	N/A	N/A	N/A
Asian	-	-	-
Two or More Races	N/A	N/A	N/A
Students w/ Disability	-	-	-
Limited English Proficient Students	N/A	N/A	N/A
Economically Disadvantaged Students	-	-	-

Data is presented for subgroups when the count is high enough under NCLB suppression rules.

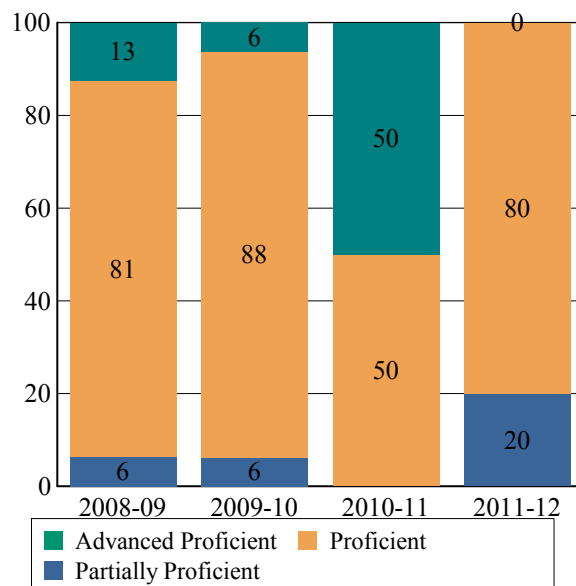
NJASK Proficiency Trends - Language Arts Literacy - Grade Level - 07

This graph presents the grade level outcomes in the categories of Advanced Proficient, Proficient, and Partially Proficient over the last four years.

Data is suppressed to protect the confidentiality of the students.

NJASK Proficiency Trends - Language Arts Literacy - Grade Level - 08

This graph presents the grade level outcomes in the categories of Advanced Proficient, Proficient, and Partially Proficient over the last four years.





ACADEMIC ACHIEVEMENT

FARMINGDALE ELEMENTARY
ACADEMY ST PO BOX 706
FARMINGDALE, NJ 07727-0706

MONMOUTH

GRADE SPAN PK-08

FARMINGDALE BORO

2011 National Assessment Educational Progress (NAEP)

The National Assessment of Educational Progress (NAEP) is the largest national assessment of what our nation's students know and can do. NAEP assesses fourth-, eighth-, and twelfth-grade students in subjects such as reading, mathematics, science, and writing. The reporting of NAEP scores on state report cards is a federal mandate. The results of NAEP are also published as the Nation's Report Card, and are available for the nation, states, and, in some cases, urban districts. The NAEP scores on the report card include grades four and eight 2011 reading and math scores for New Jersey which are the last scores published. For subgroup outcomes, visit :

<http://www.nj.gov/education/pr/2013/naep/naep4read.html>

For more information, visit <http://nces.ed.gov/nationsreportcard/>

Proficiency Percentages

Grade 4 Reading	State/Nation	Below Basic	Basic	Proficient	Advanced
All Students	State (NJ)	21.9	34.2	32.5	11.4
All Students	Nation	33.8	33.8	24.9	7.5

2011 National Assessment Educational Progress (NAEP)

The National Assessment of Educational Progress (NAEP) is the largest national assessment of what our nation's students know and can do. NAEP assesses fourth-, eighth-, and twelfth-grade students in subjects such as reading, mathematics, science, and writing. The reporting of NAEP scores on state report cards is a federal mandate. The results of NAEP are also published as the Nation's Report Card, and are available for the nation, states, and, in some cases, urban districts. The NAEP scores on the report card include grades four and eight 2011 reading and math scores for New Jersey which are the last scores published. For subgroup outcomes, visit :

<http://www.nj.gov/education/pr/2013/naep/naep8read.html>

For more information, visit <http://nces.ed.gov/nationsreportcard/>

Proficiency Percentages

Grade 8 Reading	State/Nation	Below Basic	Basic	Proficient	Advanced
All Students	State (NJ)	15.8	39.5	38.6	6.2
All Students	Nation	25.3	43.0	28.6	3.0



ACADEMIC ACHIEVEMENT

MONMOUTH

FARMINGDALE BORO

GRADE SPAN PK-08

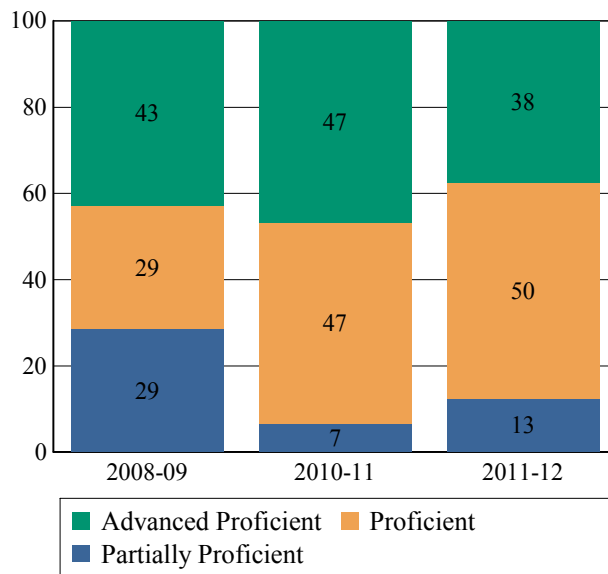
NJASK Results - Math Grade Level - 03

NJASK Proficiency Trends - Math - Grade Level - 03

This table presents the grade level proficiency results, as measured by NJASK, in Advanced Proficient, Proficient, and Partially Proficient categories for all appropriate subgroups.

This graph presents the grade level outcomes in the categories of Advanced Proficient, Proficient, and Partially Proficient over the last four years.

Subgroups	Advanced Proficient	Proficient	Partially Proficient
Schoolwide	38%	50%	13%
White	55%	45%	0%
Black	-	-	-
Hispanic	-	-	-
American Indian	N/A	N/A	N/A
Asian	N/A	N/A	N/A
Two or More Races	N/A	N/A	N/A
Students w/ Disability	-	-	-
Limited English Proficient Students	N/A	N/A	N/A
Economically Disadvantaged Students	-	-	-



Data is presented for subgroups when the count is high enough under NCLB suppression rules.

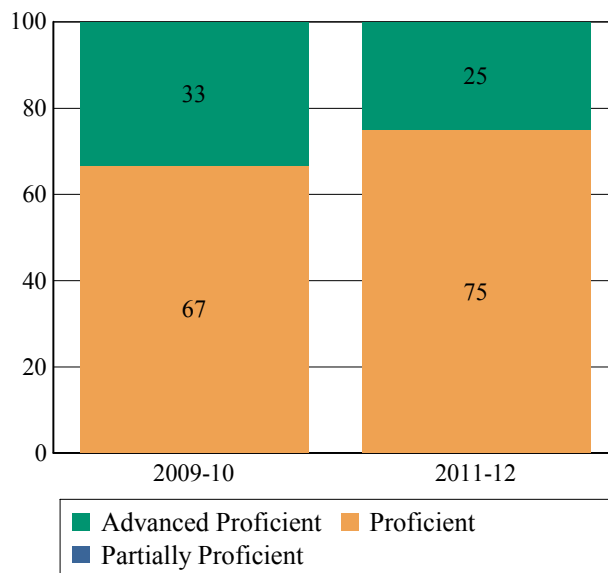
NJASK Proficiency Trends - Math - Grade Level - 04

NJASK Results - Math Grade Level - 04

This table presents the grade level proficiency results, as measured by NJASK, in Advanced Proficient, Proficient, and Partially Proficient categories for all appropriate subgroups.

This graph presents the grade level outcomes in the categories of Advanced Proficient, Proficient, and Partially Proficient over the last four years.

Subgroups	Advanced Proficient	Proficient	Partially Proficient
Schoolwide	25%	75%	0%
White	23%	77%	0%
Black	N/A	N/A	N/A
Hispanic	-	-	-
American Indian	N/A	N/A	N/A
Asian	-	-	-
Two or More Races	N/A	N/A	N/A
Students w/ Disability	-	-	-
Limited English Proficient Students	N/A	N/A	N/A
Economically Disadvantaged Students	-	-	-



Data is presented for subgroups when the count is high enough under NCLB suppression rules.



State of New Jersey

25-1490-050

FARMINGDALE ELEMENTARY
ACADEMY ST PO BOX 706
FARMINGDALE, NJ 07727-0706

ACADEMIC ACHIEVEMENT

MONMOUTH

FARMINGDALE BORO

GRADE SPAN PK-08

NJASK Results - Math Grade Level - 05

This table presents the grade level proficiency results, as measured by NJASK, in Advanced Proficient, Proficient, and Partially Proficient categories for all appropriate subgroups.

Subgroups	Advanced Proficient	Proficient	Partially Proficient
Schoolwide	-	-	-
White	-	-	-
Black	-	-	-
Hispanic	-	-	-
American Indian	N/A	N/A	N/A
Asian	N/A	N/A	N/A
Two or More Races	N/A	N/A	N/A
Students w/ Disability	-	-	-
Limited English Proficient Students	N/A	N/A	N/A
Economically Disadvantaged Students	-	-	-

Data is presented for subgroups when the count is high enough under NCLB suppression rules.

NJASK Results - Math Grade Level - 06

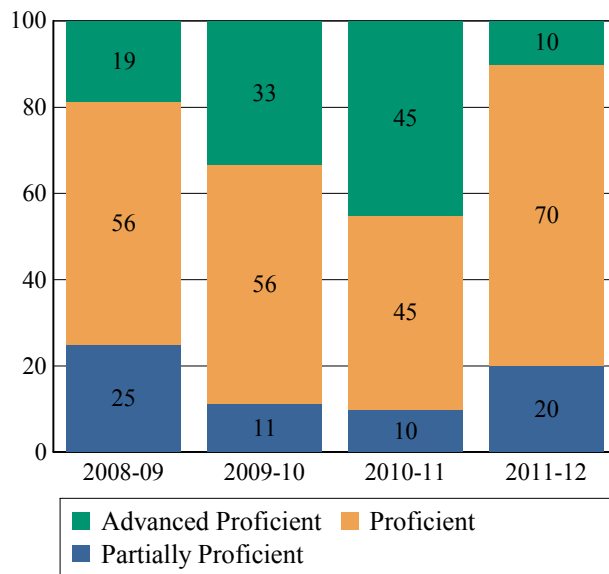
This table presents the grade level proficiency results, as measured by NJASK, in Advanced Proficient, Proficient, and Partially Proficient categories for all appropriate subgroups.

Subgroups	Advanced Proficient	Proficient	Partially Proficient
Schoolwide	58%	42%	0%
White	54%	46%	0%
Black	-	-	-
Hispanic	-	-	-
American Indian	N/A	N/A	N/A
Asian	-	-	-
Two or More Races	N/A	N/A	N/A
Students w/ Disability	-	-	-
Limited English Proficient Students	N/A	N/A	N/A
Economically Disadvantaged Students	-	-	-

Data is presented for subgroups when the count is high enough under NCLB suppression rules.

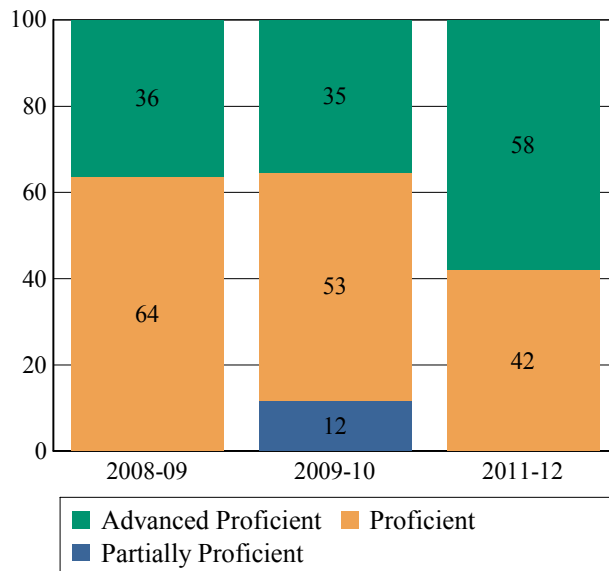
NJASK Proficiency Trends - Math - Grade Level - 05

This graph presents the grade level outcomes in the categories of Advanced Proficient, Proficient, and Partially Proficient over the last four years.



NJASK Proficiency Trends - Math - Grade Level - 06

This graph presents the grade level outcomes in the categories of Advanced Proficient, Proficient, and Partially Proficient over the last four years.





25-1490-050

FARMINGDALE ELEMENTARY
ACADEMY ST PO BOX 706
FARMINGDALE, NJ 07727-0706

ACADEMIC ACHIEVEMENT

MONMOUTH

FARMINGDALE BORO

GRADE SPAN PK-08

NJASK Results - Math Grade Level - 07

NJASK Proficiency Trends - Math - Grade Level - 07

This table presents the grade level proficiency results, as measured by NJASK, in Advanced Proficient, Proficient, and Partially Proficient categories for all appropriate subgroups.

This graph presents the grade level outcomes in the categories of Advanced Proficient, Proficient, and Partially Proficient over the last four years.

Subgroups	Advanced Proficient	Proficient	Partially Proficient
Schoolwide	-	-	-
White	-	-	-
Black	N/A	N/A	N/A
Hispanic	-	-	-
American Indian	N/A	N/A	N/A
Asian	-	-	-
Two or More Races	N/A	N/A	N/A
Students w/ Disability	-	-	-
Limited English Proficient Students	N/A	N/A	N/A
Economically Disadvantaged Students	-	-	-

Data is suppressed to protect the confidentiality of the students.

Data is presented for subgroups when the count is high enough under NCLB suppression rules.

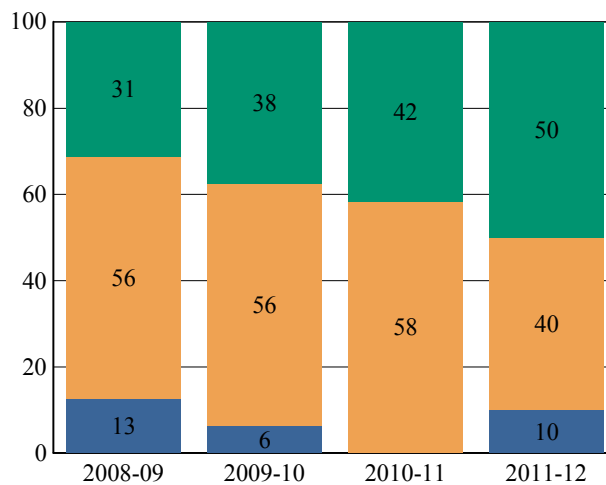
NJASK Results - Math Grade Level - 08

NJASK Proficiency Trends - Math - Grade Level - 08

This table presents the grade level proficiency results, as measured by NJASK, in Advanced Proficient, Proficient, and Partially Proficient categories for all appropriate subgroups.

This graph presents the grade level outcomes in the categories of Advanced Proficient, Proficient, and Partially Proficient over the last four years.

Subgroups	Advanced Proficient	Proficient	Partially Proficient
Schoolwide	50%	40%	10%
White	41%	47%	12%
Black	N/A	N/A	N/A
Hispanic	-	-	-
American Indian	N/A	N/A	N/A
Asian	-	-	-
Two or More Races	N/A	N/A	N/A
Students w/ Disability	-	-	-
Limited English Proficient Students	N/A	N/A	N/A
Economically Disadvantaged Students	-	-	-



Data is presented for subgroups when the count is high enough under NCLB suppression rules.



ACADEMIC ACHIEVEMENT

FARMINGDALE ELEMENTARY
 ACADEMY ST PO BOX 706
 FARMINGDALE, NJ 07727-0706

MONMOUTH

GRADE SPAN PK-08

FARMINGDALE BORO

2011 National Assessment Educational Progress (NAEP)

The National Assessment of Educational Progress (NAEP) is the largest national assessment of what our nation's students know and can do. NAEP assesses fourth-, eighth-, and twelfth-grade students in subjects such as reading, mathematics, science, and writing. The reporting of NAEP scores on state report cards is a federal mandate. The results of NAEP are also published as the Nation's Report Card, and are available for the nation, states, and, in some cases, urban districts. The NAEP scores on the report card include grades four and eight 2011 reading and math scores for New Jersey which are the last scores published. For subgroup outcomes, visit :

<http://www.nj.gov/education/pr/2013/naep/naep4math.html>

For more information, visit <http://nces.ed.gov/nationsreportcard/>

Proficiency Percentages

Grade 4 Math	State/Nation	Below Basic	Basic	Proficient	Advanced
All Students	State (NJ)	11.0	38.3	40.9	9.8
All Students	Nation	18.1	42.3	33.2	6.5

2011 National Assessment Educational Progress (NAEP)

The National Assessment of Educational Progress (NAEP) is the largest national assessment of what our nation's students know and can do. NAEP assesses fourth-, eighth-, and twelfth-grade students in subjects such as reading, mathematics, science, and writing. The reporting of NAEP scores on state report cards is a federal mandate. The results of NAEP are also published as the Nation's Report Card, and are available for the nation, states, and, in some cases, urban districts. The NAEP scores on the report card include grades four and eight 2011 reading and math scores for New Jersey which are the last scores published. For subgroup outcomes, visit :

<http://www.nj.gov/education/pr/2013/naep/naep8math.html>

For more information, visit <http://nces.ed.gov/nationsreportcard/>

Proficiency Percentages

Grade 8 Math	State/Nation	Below Basic	Basic	Proficient	Advanced
All Students	State (NJ)	17.8	35.3	33.2	13.6
All Students	Nation	27.7	38.8	25.7	7.8



ACADEMIC ACHIEVEMENT

**MONMOUTH
FARMINGDALE BORO**

GRADE SPAN PK-08

NJASK Results - Science Grade Level - 04

This table presents the grade level proficiency results, as measured by NJASK, in Advanced Proficient, Proficient, and Partially Proficient categories for all appropriate subgroups.

Subgroups	Advanced Proficient	Proficient	Partially Proficient
Schoolwide	75%	19%	6%
White	77%	15%	8%
Black	N/A	N/A	N/A
Hispanic	-	-	-
American Indian	N/A	N/A	N/A
Asian	-	-	-
Two or More Races	N/A	N/A	N/A
Students w/ Disability	-	-	-
Limited English Proficient Students	N/A	N/A	N/A
Economically Disadvantaged Students	-	-	-

Data is presented for subgroups when the count is high enough under NCLB suppression rules.

NJASK Results - Science Grade Level - 08

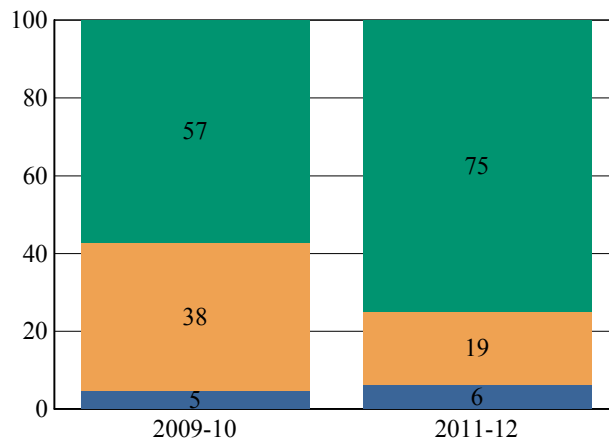
This table presents the grade level proficiency results, as measured by NJASK, in Advanced Proficient, Proficient, and Partially Proficient categories for all appropriate subgroups.

Subgroups	Advanced Proficient	Proficient	Partially Proficient
Schoolwide	60%	35%	5%
White	59%	35%	6%
Black	N/A	N/A	N/A
Hispanic	-	-	-
American Indian	N/A	N/A	N/A
Asian	-	-	-
Two or More Races	N/A	N/A	N/A
Students w/ Disability	-	-	-
Limited English Proficient Students	N/A	N/A	N/A
Economically Disadvantaged Students	-	-	-

Data is presented for subgroups when the count is high enough under NCLB suppression rules.

NJASK Proficiency Trends - Science - Grade Level - 04

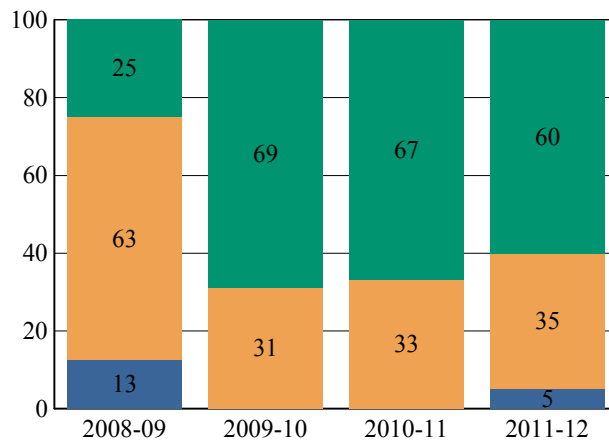
This graph presents the grade level outcomes in the categories of Advanced Proficient, Proficient, and Partially Proficient over the last four years.



Advanced Proficient Proficient Partially Proficient

NJASK Proficiency Trends - Science - Grade Level - 08

This graph presents the grade level outcomes in the categories of Advanced Proficient, Proficient, and Partially Proficient over the last four years.



Advanced Proficient Proficient Partially Proficient



COLLEGE AND CAREER READINESS

**FARMINGDALE ELEMENTARY
ACADEMY ST PO BOX 706
FARMINGDALE, NJ 07727-0706**

**MONMOUTH
FARMINGDALE BORO**

GRADE SPAN PK-08

Students in both elementary and middle schools begin to demonstrate college readiness behaviors long before they even enter high school. Among the behaviors that research has shown to be indicative of success and college and career readiness are regularly attending school and challenging themselves with rigorous course work. First, the table presents the percentage of students, as measured against the school's enrollment in seventh and eighth grade, who were reported via NJSMART as being enrolled in Algebra I. The table also presents the percentage of students who were chronically absent during the prior school year. A chronically absent student is a student who was not present for any reason for more than 10% of the total days possible for that individual student.

The first column - Schoolwide Performance - represents the outcomes for these particular indicators in this school. The second column - Peer School Percentile Rank - indicates how the school's performance compares to its group of peer schools. For example, a school whose peer school rank is 65 in Algebra I Enrollment has a higher Algebra I Enrollment than 65% of its peer group. The third column - Statewide Percentile Rank - indicates how the school's performance compares to schools across the state. The fourth column - Statewide Target - provides the statewide targets for each of these indicators. The last column - Met Target? - indicates whether the School Performance met or exceeded the statewide target.

The Summary row presents the averages of the peer school percentile ranks, the average of statewide percentile ranks and the percentage of statewide targets met.

College and Career Readiness Indicators	School Performance	Peer Rank (Percentile)	Statewide Rank (Percentile)	Statewide Target	Met Target?
Students taking Algebra (%)	66%	100	98	20%	YES
Chronic Absenteeism (%)	0%	100	100	6%	YES
Summary		100	99		100%

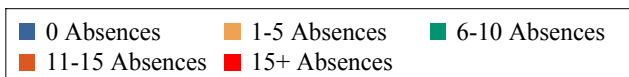
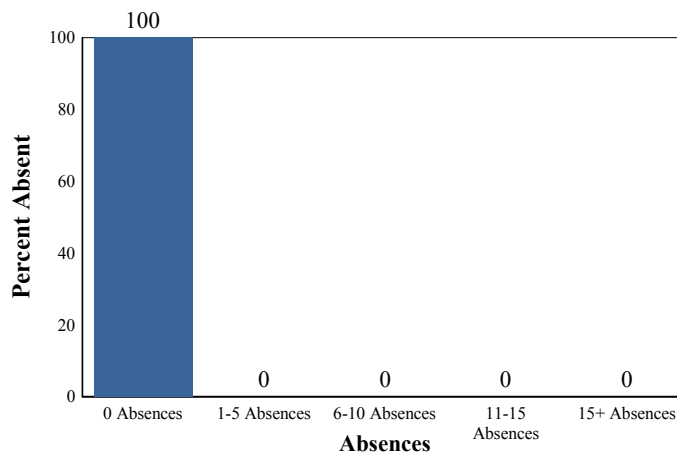
Algebra I

This table presents the percentage of seventh and eighth graders who were reported in the Algebra I course code in NJSMART and the percentage of those students who earned a C or higher in the course.

2011-12	School
Students taking Algebra I	66%
Algebra grade (C or better)	19%

Absenteeism

The chart below presents the percentage of students who were absent in each category of absence: 0 absences, 1- 5 absences, 6- 10 absences, 11 - 15 absences, and more than 15 absences. An absence is defined as being 'not present' and includes the days missed regardless of whether they were determined to be excused or unexcused by the school.





State of New Jersey

25-1490-050

FARMINGDALE ELEMENTARY
ACADEMY ST PO BOX 706
FARMINGDALE, NJ 07727-0706

STUDENT GROWTH

MONMOUTH

FARMINGDALE BORO

GRADE SPAN PK-08

This section of the performance report presents data about student growth, utilizing the Student Growth Percentile Methodology (SGP). SGP creates a measure of how students progressed in grades 4 through 8 in NJ ASK Language Arts Literacy and Math when compared to other students with a similar NJ ASK test score history. A short video explaining the methodology can be found here: <http://www.state.nj.us/education/njsmart/performance/>

The first column - Schoolwide Performance - presents the schoolwide median growth score in either Language Arts Literacy or Math for all students in the school. The second column - Peer Rank - indicates how the school's growth performance compares to its group of peer schools. The third column - Statewide Rank - indicates how a school compares to schools across the state. The last column - Met Target? - indicates whether the school's performance met or exceeded the target.

The summary row presents the averages of the peer school percentile ranks, the averages of statewide percentile ranks, the percentage of statewide targets met.

Student Growth Indicators	Schoolwide Performance	Peer Rank (Percentile)	Statewide Rank (Percentile)	Statewide Target	Met Target?
Student Growth on Language Arts	56	79	76	35	YES
Student Growth on Math	57	79	78	35	YES
		79	77		100%

Student Growth

This table presents for all students with growth scores the interaction between their proficiency level on NJASK and their growth scores. For example, in the top left cell the percentage of students who are both partially proficient AND also demonstrating low growth is displayed.

Language Arts

Math

	GROWTH		
	Low	Typical	High
Partially Proficient	13%	7%	4%
Proficient	11%	30%	31%
Advanced Proficient	0%	1%	1%

	GROWTH		
	Low	Typical	High
Partially Proficient	7%	3%	0%
Proficient	21%	17%	14%
Advanced Proficient	7%	7%	23%

Low Growth is defined as an **Student Growth Percentile** score less than 35.

Typical Growth is defined as an **Student Growth Percentile** score between 35 and 65.

High Growth is defined as a **Student Growth Percentile** score higher than 65.



WITHIN SCHOOL ACHIEVEMENT GAP

**FARMINGDALE ELEMENTARY
ACADEMY ST PO BOX 706
FARMINGDALE, NJ 07727-0706**

MONMOUTH

GRADE SPAN PK-08

FARMINGDALE BORO

This section of the performance report presents data about the achievement gap that exists within a school - as measured by the difference between the students' scale scores at the 25th and 75th percentile in the school, the so-called Interquartile Range (IQR). Taken together with an understanding of the overall and average achievement levels in the school, the IQR furthers an understanding of the range of student outcomes that exist in a school. A school gap smaller than the state gap indicates that the school's range of student outcomes is narrower than the state's while a school gap larger than the state gap indicates that the school's range of student outcomes is larger than the state's.

Grade Level - 03

NJ ASK Language Arts 25th %ile vs 75th%ile

This table presents the scale scores associated with students at the bottom (0th percentile), the 25th percentile, the 50th percentile, the 75th percentile and the top (99th percentile) of school's distribution

Percentile	Scale Score
99th	238
75th	231
50th	223
25th	206
0th	177

	Scale Score Gap - School	Scale Score Gap - State
25th vs 75th Gap	25	28

Grade Level - 03

NJ ASK Math 25th %ile vs 75th%ile

This table presents the scale scores associated with students at the bottom (0th percentile), the 25th percentile, the 50th percentile, the 75th percentile and the top (99th percentile) of school's distribution

Percentile	Scale Score
99th	278
75th	250
50th	240
25th	226
0th	160

	Scale Score Gap - School	Scale Score Gap - State
25th vs 75th Gap	25	61

Grade Level - 04

NJ ASK Language Arts 25th %ile vs 75th%ile

This table presents the scale scores associated with students at the bottom (0th percentile), the 25th percentile, the 50th percentile, the 75th percentile and the top (99th percentile) of school's distribution

Percentile	Scale Score
99th	226
75th	216
50th	205
25th	192
0th	160

	Scale Score Gap - School	Scale Score Gap - State
25th vs 75th Gap	25	31

Grade Level - 04

NJ ASK Math 25th %ile vs 75th%ile

This table presents the scale scores associated with students at the bottom (0th percentile), the 25th percentile, the 50th percentile, the 75th percentile and the top (99th percentile) of school's distribution

Percentile	Scale Score
99th	267
75th	245
50th	231
25th	217
0th	193

	Scale Score Gap - School	Scale Score Gap - State
25th vs 75th Gap	28	56



WITHIN SCHOOL ACHIEVEMENT GAP

MONMOUTH

FARMINGDALE BORO

GRADE SPAN PK-08

Grade Level - 05

NJ ASK Language Arts 25th %ile vs 75th%ile

This table presents the scale scores associated with students at the bottom (0th percentile), the 25th percentile, the 50th percentile, the 75th percentile and the top (99th percentile) of school's distribution

Percentile	Scale Score
99th	234
75th	222
50th	214
25th	198
0th	176

	Scale Score Gap - School	Scale Score Gap - State
--	-----------------------------	----------------------------

25th vs 75th Gap	24	38
------------------	----	----

Grade Level - 06

NJ ASK Language Arts 25th %ile vs 75th%ile

This table presents the scale scores associated with students at the bottom (0th percentile), the 25th percentile, the 50th percentile, the 75th percentile and the top (99th percentile) of school's distribution

Percentile	Scale Score
99th	253
75th	235
50th	210
25th	200
0th	164

	Scale Score Gap - School	Scale Score Gap - State
--	-----------------------------	----------------------------

25th vs 75th Gap	35	34
------------------	----	----

Grade Level - 05

NJ ASK Math 25th %ile vs 75th%ile

This table presents the scale scores associated with students at the bottom (0th percentile), the 25th percentile, the 50th percentile, the 75th percentile and the top (99th percentile) of school's distribution

Percentile	Scale Score
99th	257
75th	236
50th	218
25th	212
0th	179

	Scale Score Gap - School	Scale Score Gap - State
--	-----------------------------	----------------------------

25th vs 75th Gap	25	56
------------------	----	----

Grade Level - 06

NJ ASK Math 25th %ile vs 75th%ile

This table presents the scale scores associated with students at the bottom (0th percentile), the 25th percentile, the 50th percentile, the 75th percentile and the top (99th percentile) of school's distribution

Percentile	Scale Score
99th	299
75th	293
50th	263
25th	229
0th	212

	Scale Score Gap - School	Scale Score Gap - State
--	-----------------------------	----------------------------

25th vs 75th Gap	64	57
------------------	----	----



25-1490-050

FARMINGDALE ELEMENTARY
ACADEMY ST PO BOX 706
FARMINGDALE, NJ 07727-0706

WITHIN SCHOOL ACHIEVEMENT GAP

MONMOUTH

FARMINGDALE BORO

GRADE SPAN PK-08

Grade Level - 08

NJ ASK Language Arts 25th %ile vs 75th%ile

This table presents the scale scores associated with students at the bottom (0th percentile), the 25th percentile, the 50th percentile, the 75th percentile and the top (99th percentile) of school's distribution

Percentile	Scale Score
99th	240
75th	226
50th	218
25th	206
0th	194

	Scale Score Gap - School	Scale Score Gap - State
25th vs 75th Gap	20	33

Grade Level - 08

NJ ASK Math 25th %ile vs 75th%ile

This table presents the scale scores associated with students at the bottom (0th percentile), the 25th percentile, the 50th percentile, the 75th percentile and the top (99th percentile) of school's distribution

Percentile	Scale Score
99th	298
75th	265
50th	241
25th	225
0th	176

	Scale Score Gap - School	Scale Score Gap - State
25th vs 75th Gap	40	64



SCHOOL CLIMATE

FARMINGDALE ELEMENTARY
ACADEMY ST PO BOX 706
FARMINGDALE, NJ 07727-0706

MONMOUTH

GRADE SPAN PK-08

FARMINGDALE BORO

Length of School Day

This table presents the amount of time a school is in session for a typical student on a normal school day.

	School
2011-12	6 Hrs 40 Mins

Student Suspension Rate

This table presents the percentage of students who were suspended one or more times during the school year.

	School
2011-12	4.0%

Instructional Time

This table presents the amount of time that a typical student is engaged in instructional activities under the supervision of a certified teacher.

2011-12	School
Full Time	5 Hrs 40 Mins.
Shared Time	2 Hrs. 30 Mins.

Student Expulsions

This table presents the number of students who were expelled from the school and district during the school year.

	School
2011-12	0

Student to Staff Ratio

This table presents the count of students per faculty member or administrator in the school. All staff are counted in full-time equivalents.

2011-12	School
Faculty	8.3
Administrators	

SCHOOL PEER GROUP**FARMINGDALE ELEMENTARY****25-1490-050**

This table presents the list of peer schools in alphabetical order by county name that was created specifically for this school (highlighted in yellow). Peer schools are drawn from across the state and represent schools that have similar grade configurations and that are educating students of similar demographic characteristics, as measured by enrollment in Free/Reduced Lunch Programs, Limited English Proficiency or Special Education Programs.

<u>COUNTY NAME</u>	<u>DISTRICT NAME</u>	<u>SCHOOL NAME</u>	<u>CDS CODE</u>	<u>GRADE SPAN</u>	<u>FRPL</u>	<u>LEP</u>	<u>SpED</u>
BURLINGTON	LUMBERTON TWP	LUMBERTON MIDDLE SCHOOL	05-2850-060	06-08	15.5%	0.0%	15.5%
BURLINGTON	MOUNT LAUREL TWP	T E HARRINGTON MIDDLE	05-3440-060	05-08	12.6%	0.5%	15.0%
BURLINGTON	NORTHERN BURLINGTON REG	N BURL CO REG MIDDLE SCH	05-3690-060	07-08	16.5%	0.1%	16.7%
CHARTERS	RENAISSANCE REGIONAL LEADERSHIP CS	RENAISSANCE REGIONAL LEADERSHIP CS	80-6044-927	KG-08	27.6%	0.0%	19.1%
ESSEX	MONTCLAIR TOWN	GLENFIELD MIDDLE	13-3310-116	06-08	14.0%	0.0%	13.7%
ESSEX	MONTCLAIR TOWN	RENAISSANCE MIDDLE SCH AT RAND	13-3310-165	06-08	10.3%	0.0%	14.2%
GLOUCESTER	WASHINGTON TWP	ORCHARD VALLEY MIDDLE	15-5500-050	06-08	24.7%	0.0%	18.1%
GLOUCESTER	WEST DEPTFORD TWP	WEST DEPTFORD MIDDLE	15-5620-130	05-08	24.2%	0.0%	17.9%
HUNTERDON	FLEMINGTON-RARITAN REG	J P CASE MIDDLE SCHOOL	19-1510-045	07-08	10.2%	0.2%	14.9%
MIDDLESEX	METUCHEN BORO	EDGAR	23-3120-070	05-08	10.3%	0.5%	13.9%
MIDDLESEX	WOODBRIIDGE TWP	COLONIA MIDDLE	23-5850-060	06-08	17.9%	0.0%	16.1%
MONMOUTH	FARMINGDALE BORO	FARMINGDALE ELEMENTARY	25-1490-050	PK-08	21.8%	0.0%	17.1%
MONMOUTH	HOWELL TWP	HOWELL TWP M S SOUTH	25-2290-027	06-08	10.6%	0.4%	16.1%
MONMOUTH	MIDDLETOWN TWP	BAYSHORE MIDDLE SCHOOL	25-3160-055	06-08	15.1%	0.4%	18.2%
MORRIS	MOUNT OLIVE TWP	MT OLIVE MIDDLE SCHOOL	27-3450-040	06-08	14.7%	1.0%	19.0%
MORRIS	ROCKAWAY TWP	COPELAND MIDDLE	27-4490-015	06-08	11.5%	0.7%	18.7%
MORRIS	ROXBURY TWP	EISENHOWER MIDDLE	27-4560-055	07-08	10.7%	0.3%	13.8%
OCEAN	JACKSON TWP	CARL W GOETZ MIDDLE SCH	29-2360-055	06-08	11.9%	0.0%	14.7%
OCEAN	PLUMSTED TWP	NEW EGYPT MIDDLE SCH	29-4190-080	06-08	16.0%	0.2%	16.6%
OCEAN	SOUTHERN REGIONAL	SOUTHERN REG MIDDLE	29-4950-060	07-08	23.9%	0.4%	18.9%
OCEAN	TOMS RIVER REGIONAL	TOMS RIVER INTERMEDIATE E	29-5190-060	06-08	20.0%	0.0%	14.6%
SALEM	PENNSVILLE	PENNSVILLE MIDDLE	33-4075-055	06-08	29.7%	0.4%	20.0%
SUSSEX	HAMBURG BORO	HAMBURG	37-1930-060	PK-08	22.1%	0.7%	19.9%
SUSSEX	STANHOPE BORO	VALLEY ROAD SCHOOL	37-5030-050	KG-08	15.3%	0.0%	14.9%
SUSSEX	VERNON TWP	GLEN MEADOW	37-5360-025	07-08	16.3%	0.3%	17.0%
UNION	SPRINGFIELD TWP	FLORENCE M GAUDINEER	39-5000-060	06-08	10.0%	0.8%	15.8%
WARREN	GREAT MEADOWS REGIONAL	GREAT MEADOWS REG MID SCH	41-1785-040	06-08	11.8%	0.3%	16.6%
WARREN	HOPE TWP	HOPE TWP	41-2250-050	PK-08	13.9%	0.0%	13.8%
WARREN	WARREN HILLS REGIONAL	WARREN HILLS REG MIDD SCH	41-5465-060	07-08	19.6%	0.6%	19.3%