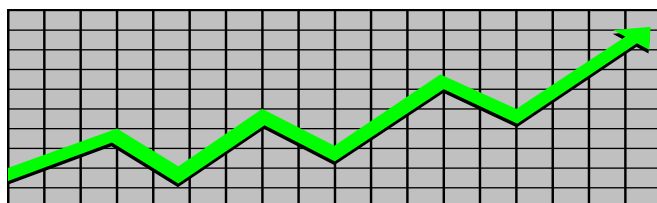


**State of New Jersey
Department of Human Services
Division of Family Development**

CURRENT PROGRAM STATISTICS



October 2022

Natasha Johnson, Assistant Commissioner

TABLE OF CONTENTS

HIGHLIGHTS:

WFNJ/TANF	ii
NJ SNAP	ii
EMERGENCY ASSISTANCE	ii
GENERAL ASSISTANCE	iii
GA Emergency Assistance.....	iii
GA Program.....	iii
CHILD SUPPORT SERVICES	iii
WORK FIRST NEW JERSEY (WFNJ)	iii
STATISTICS- BY STATE & COUNTY	1
Table 1: WFNJ/TANF Families & Persons (NJ Statewide) October 2020 to 2022.....	1
Table 2: WFNJ/TANF Families (by County)- October 2022.....	2
Table 2B: WFNJ/TANF Persons, Adults, & Children (by County)- October 2022.....	3
Table 3: TANF Work Participation Rates Over 12 Month Period (by County)- October 2022.....	4
Table 4: TANF Work Participation Rates Over 12 Month Period (NJ Statewide)- October 2022.....	5
Table 5: NJ SNAP Households/Persons (NJ Statewide) October 2020 to 2022.....	6
Table 6: NJ SNAP Recipient Trends (NJ Statewide) October 2020 to 2022.....	7
Table 7: NJ SNAP Households/Persons (by County)- October 2022.....	8
Table 8: Emergency Assistance Program (NJ Statewide) October 2020 to 2022.....	9
Table 9: Emergency Assistance Program (by County)- October 2022.....	10
Table 10: General Assistance Program (NJ Statewide) October 2020 to 2022.....	11
Table 11: General Assistance Program (by County)- October 2022.....	12
Table 12: Child Support Services Distributions (NJ Statewide) FFY 2022.....	13
Table 13: Child Support Services Paternities Established- October 2022.....	14
Table 14: Child Support Services Cases With Orders- October 2022.....	15
Table 15: Child Support Services Collections On Current Support- October 2022.....	16
Table 16: Child Support Services Cases With Payments On Arrears- October 2022.....	17
Table 17: WFNJ Statistical Summary- October 2022.....	18
ACRONYMS	19
EXPLANATORY NOTES	20
WFNJ Statistical Summary (Table 17).....	20

DIVISION OF FAMILY DEVELOPMENT CURRENT PROGRAM STATISTICS

OCTOBER 2022

Each month the Division of Family Development publishes its program statistics for: WFNJ/TANF, NJ SNAP, Emergency Assistance, General Assistance, and Child Support Services. When possible, information is provided separately for children and adults. Many tables also provide trend data with information broken down by county for readers to consider. This report is compiled and prepared by The Bureau of Research & Reporting.

WFNJ/TANF

- As of the end of October, the TANF caseload had increased by 1732 cases, from 9,317 in October 2021 to 11,049 in October 2022; an increase of 18.6%.
- The counties with caseloads that increased the most since October 2021 were Bergen (57.4%), Sussex (47.4%), and Salem (44.5%).
- The counties with caseloads that decreased the most since October 2021 was Warren (-9.5%).
- Of the WFNJ/TANF cases, 2,626 or 23.8% were child-only in October 2022.
- The counties with the most child-only cases were Camden (487), Hudson (296), and Passaic (270).
- Hudson (4,644), Camden (4,101), and Essex (3,654) counties had the greatest number of persons receiving TANF in October 2022.

NJ SNAP (Formerly FOOD STAMPS)

- In October 2022, there were 395,191 households receiving NJ SNAP benefits. The number of NJ SNAP households decreased by 66,770 or -14.5%, since October 2021.
- There were 763,189 persons receiving NJ SNAP benefits as of October 2022; a decrease of 128,151 or -14.4% since October 2021.
- The counties having the highest SNAP caseload increase since October 2021 was Hunterdon (4.8%).
- The counties having the highest SNAP caseload decrease since October 2021 were Union (-27%), Hudson (-26%), and Passaic (-24.9%).

EMERGENCY ASSISTANCE

- There were 1,207 TANF families receiving Emergency Assistance (EA) in October 2022; a decrease of 106 or -8.1% since October 2021.
- In October 2022, EA payments were made for 515 SSI recipients.

DIVISION OF FAMILY DEVELOPMENT CURRENT PROGRAM STATISTICS OCTOBER 2022

- There were 1,758 GA cases with Emergency Assistance payments in October 2022; a decrease of 60 or -3.3% since October 2021.
- The counties that showed the highest percent increase in Emergency Assistance payments were Essex (100%), Somerset (75.9%), and Morris (44.1%).
- The counties that showed the highest percent decrease in Emergency Assistance payments were Sussex (-80%), Salem (-60%), and Passaic (-48.1%).

GENERAL ASSISTANCE

- The total numbers of cases receiving GA has decreased from 13,184 to 11,120 since October 2021; a decrease of -15.7%.
- There were 7,829 Employable GA and 3,291 Unemployable GA cases in October 2022.
- The counties that showed a percent increase for GA cases were Cape May (35.9%), Somerset (34.2%), and Morris (16.7%) since October 2021.
- The counties that showed the highest percent decrease for GA cases since October 2021 were Hudson (-49.8%), Passaic (-39.2%), and Warren (-34.3%).
- In October 2022, GA cases showed a -4.1% decrease since September 2022.

CHILD SUPPORT SERVICES (QUARTERLY REPORT)

- The total collection for the Child Support Services Program was about \$265 million from July 2022 to September 2022; a decrease of -10.12% over the same period from FFY 2021.
- Total distributions decreased -11.1% from September 2021.

WORK FIRST NEW JERSEY (WFNJ)

- During the report month of October 2022, there were 534 families in which at least one member was employed and an additional 136 families whose WFNJ assistance cases were closed due to employment - related earnings.
- The three counties with the greatest number of employed active WFNJ recipients were: Hudson (95), Essex (74), and Camden (60).
- There were 209 former TANF cases receiving post-TANF support in the form of child care assistance.

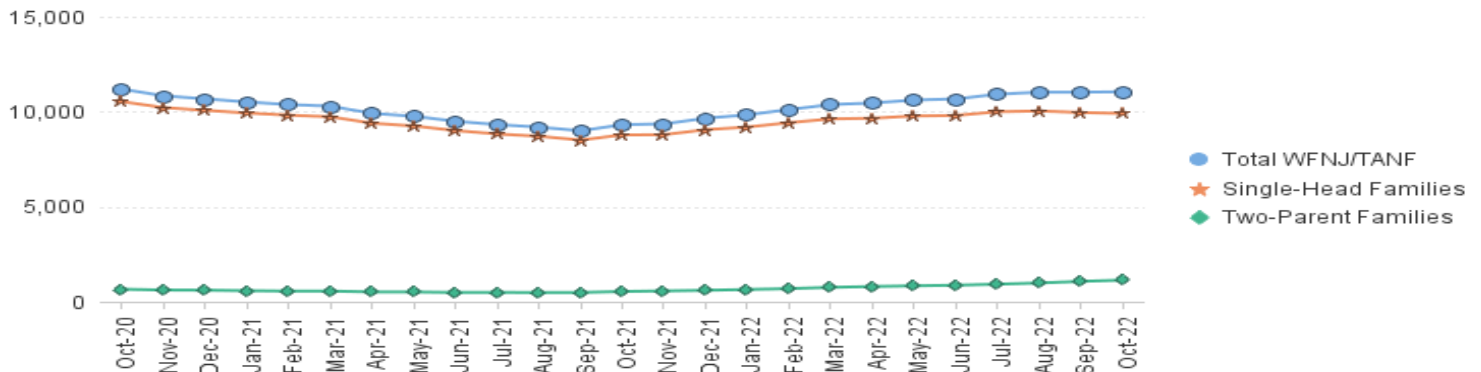
TABLE 1: WFNJ/TANF PROGRAM

STATEWIDE NUMBER OF APPLICATIONS AND TERMINATIONS DURING OCTOBER 2022
NUMBER OF ELIGIBLE FAMILIES & PERSONS RECEIVING WFNJ/TANF FOR OCTOBER 2022

OCTOBER 2020 THROUGH OCTOBER 2022

		Cases Added	Cases Closed	Child-Only Cases ‡	Total Single-Head Families	2-Parent Families	Total WFNJ/TANF Families	%CHNG (1 Yr.)	Total Persons	%CHNG (1 Yr.)	Adults	Children
2020	OCT	534	904	3,564	10,532	659	11,191	7.6%	28,657	9.6%	8,286	20,371
	NOV	419	767	3,470	10,218	617	10,835	-1.1%	27,738	0.3%	7,982	19,756
	DEC	434	595	3,410	10,071	607	10,678	-2.5%	27,371	-1.4%	7,875	19,496
2020	Average	682	724	3,614	10,607	698	11,306		28,973		8,390	20,583
2021	JAN	400	585	3,379	9,932	580	10,512	-1.7%	26,960	-0.6%	7,713	19,247
	FEB	378	504	3,347	9,818	559	10,377	-4.1%	26,520	-3.6%	7,589	18,931
	MAR	397	481	3,311	9,735	557	10,292	-3.9%	26,335	-3.2%	7,538	18,797
	APR	298	704	3,224	9,395	518	9,913	-11.8%	25,276	-12.1%	7,207	18,069
	MAY	264	510	3,209	9,250	513	9,763	-18.0%	24,858	-19.1%	7,067	17,791
	JUN	373	636	3,141	9,008	489	9,497	-21.8%	24,146	-23.0%	6,845	17,301
	JUL	391	590	3,068	8,829	493	9,322	-23.0%	23,785	-23.8%	6,747	17,038
	AUG	415	544	3,029	8,709	482	9,191	-22.4%	23,445	-23.0%	6,644	16,801
	SEP	388	588	2,945	8,507	489	8,996	-22.0%	23,009	-22.1%	6,540	16,469
	OCT	833	564	2,921	8,779	538	9,317	-16.7%	23,888	-16.6%	6,934	16,954
	NOV	656	614	2,816	8,791	568	9,359	-13.6%	24,282	-12.5%	7,111	17,171
	DEC	702	432	2,824	9,054	601	9,655	-9.6%	25,177	-8.0%	7,432	17,745
2021	Average	458	563	3,101	9,151	532	9,683		24,807		7,114	17,693
2022	JAN	667	484	2,796	9,193	645	9,838	-6.4%	25,789	-4.3%	7,687	18,102
	FEB	655	414	2,794	9,424	689	10,113	-2.5%	26,638	0.4%	8,008	18,630
	MAR	715	512	2,804	9,623	756	10,379	0.8%	27,433	4.2%	8,331	19,102
	APR	644	622	2,743	9,656	802	10,458	5.5%	27,749	9.8%	8,517	19,232
	MAY	632	475	2,723	9,777	838	10,615	8.7%	28,183	13.4%	8,730	19,453
	JUN	622	599	2,718	9,802	869	10,671	12.4%	28,287	17.1%	8,822	19,465
	JUL	679	518	2,715	9,998	925	10,923	17.2%	29,043	22.1%	9,133	19,910
	AUG	713	609	2,687	10,037	987	11,024	19.9%	29,453	25.6%	9,324	20,129
	SEP	755	808	2,651	9,959	1,070	11,029	22.6%	29,486	28.1%	9,448	20,038
	OCT	753	821	2,626	9,910	1,139	11,049	18.6%	29,606	23.9%	9,562	20,044
2022	Average to Date	684	586	2,726	9,738	872	10,610		28,167		8,756	19,411

NJ STATEWIDE
Eligible Families Receiving WFNJ/TANF
OCTOBER 2020 THROUGH OCTOBER 2022



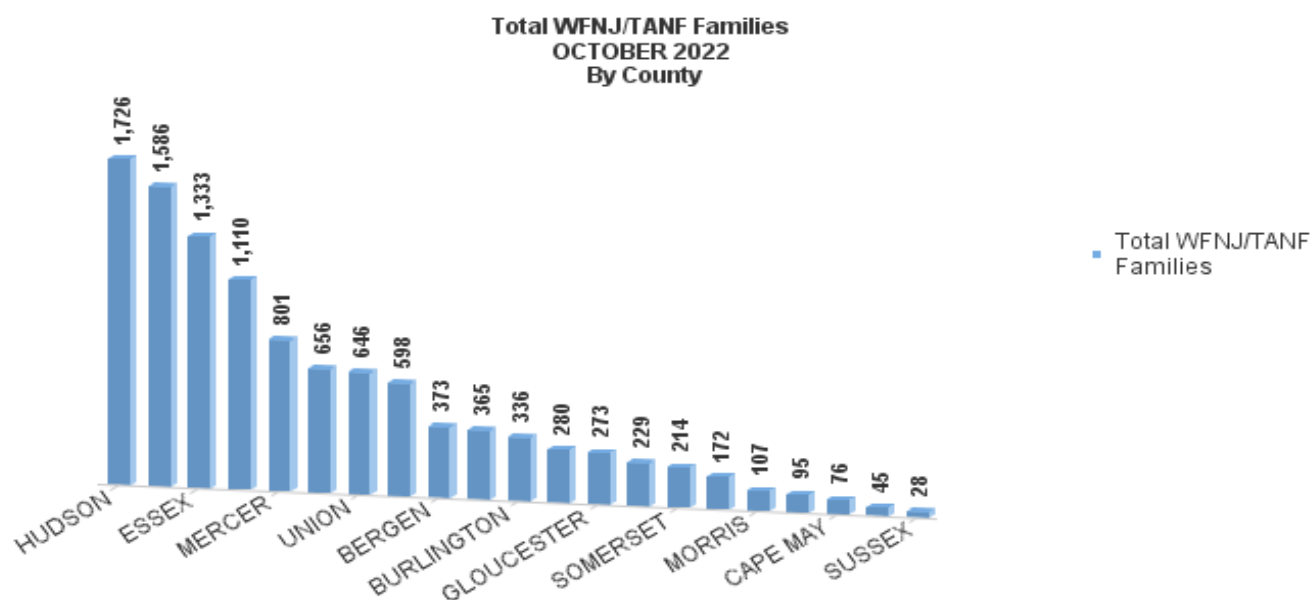
Data is derived from NJ MMIS Shared Data Warehouse Issuance files.

Effective July 2013 this data query source was converted to the SDW

‡ Child-only cases are defined as families in which no eligible adult receives TANF program benefits, yet the family continues to be headed by at least one of the biological parents, or grandparents, or other appropriate adult.

TABLE 2:
WFNJ/TANF PROGRAM **NUMBER OF APPLICATIONS AND TERMINATIONS BY COUNTY DURING OCTOBER 2022**
NUMBER OF ELIGIBLE FAMILIES RECEIVING WFNJ/TANF FOR OCTOBER 2022

County	Cases Added	Cases Closed **	Child-Only	1-Adult	Total Single-Head	Total 2-Parent	Total WFNJ/TANF	%CHNG (3 Mon)	%CHNG (1 Yr.)
			Cases ‡	Cases	Families	Families	Families		
ATLANTIC	39	62	212	399	611	45	656	-7.5%	8.6%
BERGEN	34	15	57	253	310	63	373	14.4%	57.4% Δ
BURLINGTON	19	36	97	219	316	20	336	-9.2%	10.9%
CAMDEN	91	94	487	993	1,480	106	1,586	0.0%	19.2%
CAPE MAY	11	8	20	49	69	7	76	-3.8%	7.0% *
CUMBERLAND	29	23	89	169	258	22	280	0.7%	7.7%
ESSEX	107	124	267	884	1,151	182	1,333	1.5%	10.9%
GLOUCESTER	21	25	66	193	259	14	273	1.5%	17.2%
HUDSON	114	150	296	1,224	1,520	206	1,726	-0.9%	22.8%
HUNTERDON	7	5	4	35	39	6	45	21.6%	7.1% *
MERCER	45	55	216	538	754	47	801	0.5%	24.6%
MIDDLESEX	47	53	174	372	546	52	598	1.0%	11.8%
MONMOUTH	26	25	57	156	213	16	229	-0.9%	36.3%
MORRIS	15	3	23	66	89	18	107	11.5%	28.9%
OCEAN	28	24	72	256	328	37	365	6.4%	21.7%
PASSAIC	31	37	270	768	1,038	72	1,110	-2.3%	9.3%
SALEM	19	19	35	116	151	21	172	3.0%	44.5% Δ
SOMERSET	16	15	41	152	193	21	214	4.4%	18.9%
SUSSEX	4	4	6	14	20	8	28	3.7%	47.4% Δ
UNION	38	35	118	361	479	167	646	3.5%	39.8%
WARREN	12	9	19	67	86	9	95	-3.1%	-9.5% *
NJ Total	753	821	2,626	7,284	9,910	1,139	11,049	0.2%	18.6%



Data is derived from NJ MMIS Shared Data Warehouse Issuance files.
Effective July 2013 this data query source was converted to the SDW

‡ Child-only cases are defined as families in which no eligible adult receives TANF program benefits, yet the family continues to be headed by at least one of the biological parents, or grandparents, or other appropriate adult

** 'Cases closed' include cases that received a benefit in the prior month, but did not receive any TANF benefit for the report month.

Δ=higher caseload % change

*=lower caseload % change

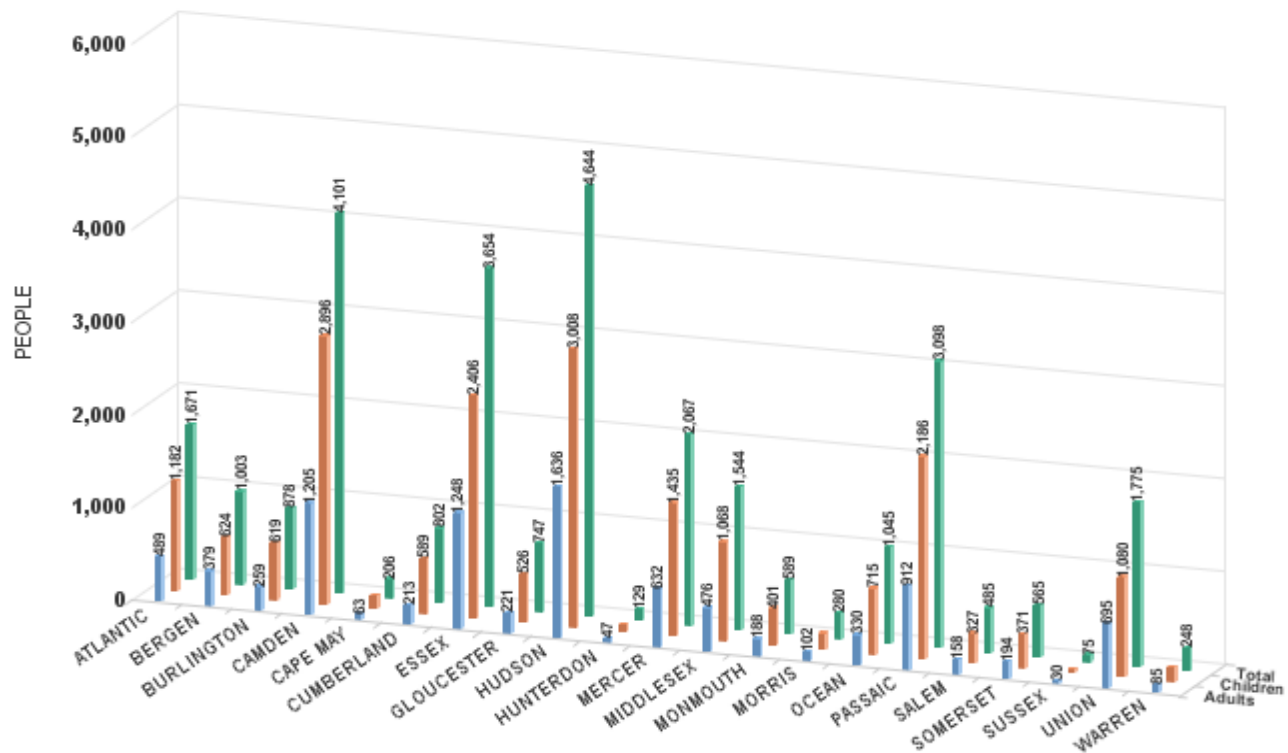
TABLE 2B :

WFNJ/TANF
PROGRAMNUMBER OF PARTICIPATING PERSONS, ADULTS, AND CHILDREN
BY COUNTY FOR OCTOBER 2022**PERSONS**

County	Adults	Children	Child/Adult Ratio	Total Persons	% Chng (1 Yr)	Persons Per Case
ATLANTIC	489	1,182	2.42	1,671	11.3% *	2.55
BERGEN	379	624	1.65	1,003	72.9% Δ	2.69
BURLINGTON	259	619	2.39	878	14.3%	2.61
CAMDEN	1,205	2,896	2.40	4,101	21.8%	2.59
CAPE MAY	63	143	2.27	206	13.8%	2.71
CUMBERLAND	213	589	2.77	802	12.2%	2.86
ESSEX	1,248	2,406	1.93	3,654	18.8%	2.74
GLOUCESTER	221	526	2.38	747	30.8%	2.74
HUDSON	1,636	3,008	1.84	4,644	29.1%	2.69
HUNTERDON	47	82	1.74	129	11.2% *	2.87
MERCER	632	1,435	2.27	2,067	28.0%	2.58
MIDDLESEX	476	1,068	2.24	1,544	15.5%	2.58
MONMOUTH	188	401	2.13	589	55.4% Δ	2.57
MORRIS	102	178	1.75	280	30.2%	2.62
OCEAN	330	715	2.17	1,045	29.8%	2.86
PASSAIC	912	2,186	2.40	3,098	13.6%	2.79
SALEM	158	327	2.07	485	60.1% Δ	2.82
SOMERSET	194	371	1.91	565	19.2%	2.64
SUSSEX	30	45	1.50	75	53.1%	2.68
UNION	695	1,080	1.55	1,775	43.5%	2.75
WARREN	85	163	1.92	248	-10.1% *	2.61
NJ Total	9,562	20,044	2.096214181	29,606	23.9%	2.68

Δ=higher caseload % change

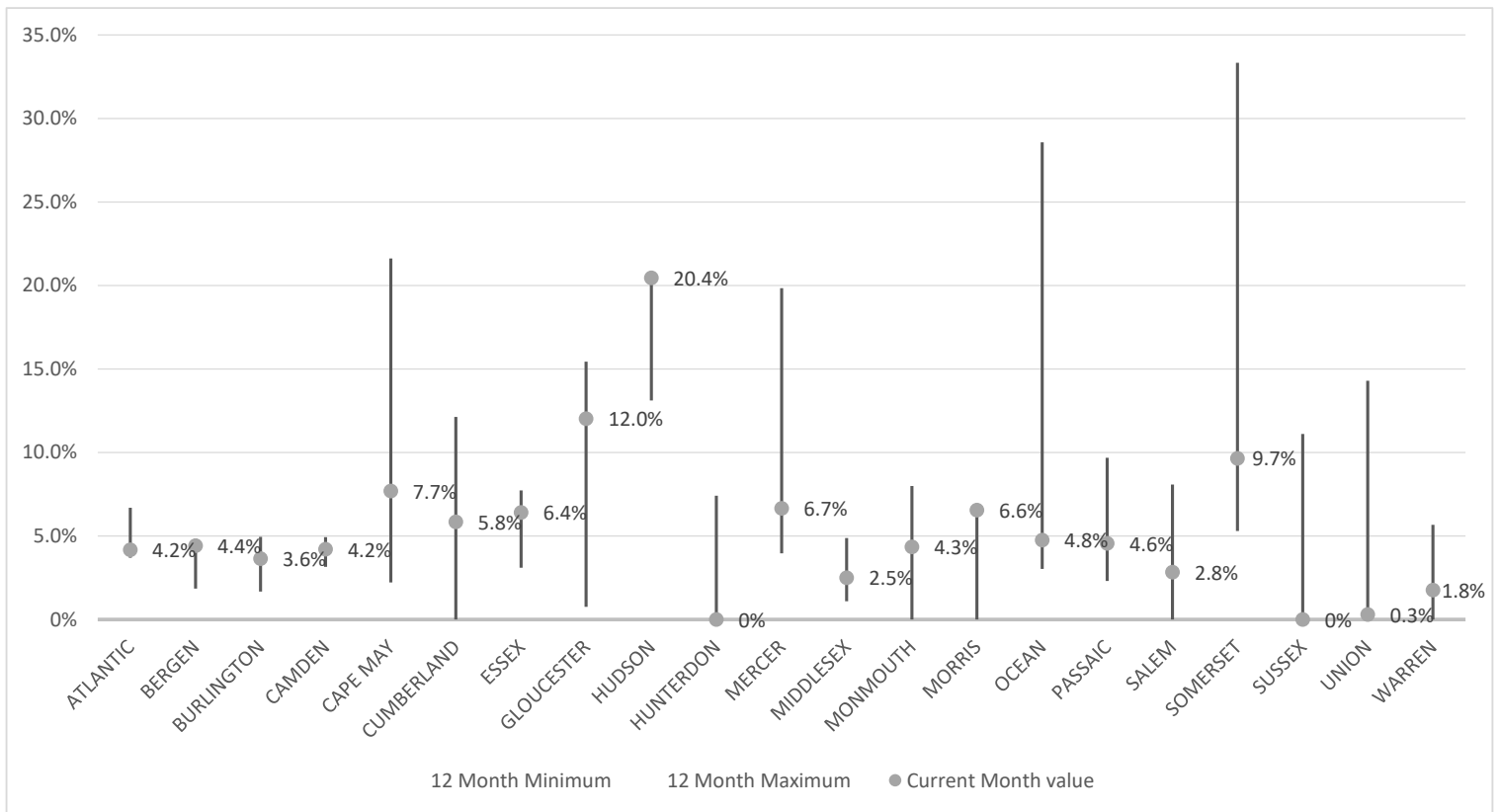
*=lower caseload % change



Data is derived from NJ MMIS Shared Data Warehouse Issuance files.
Effective July 2013 this data query source was converted to the SDW

TABLE 3 :

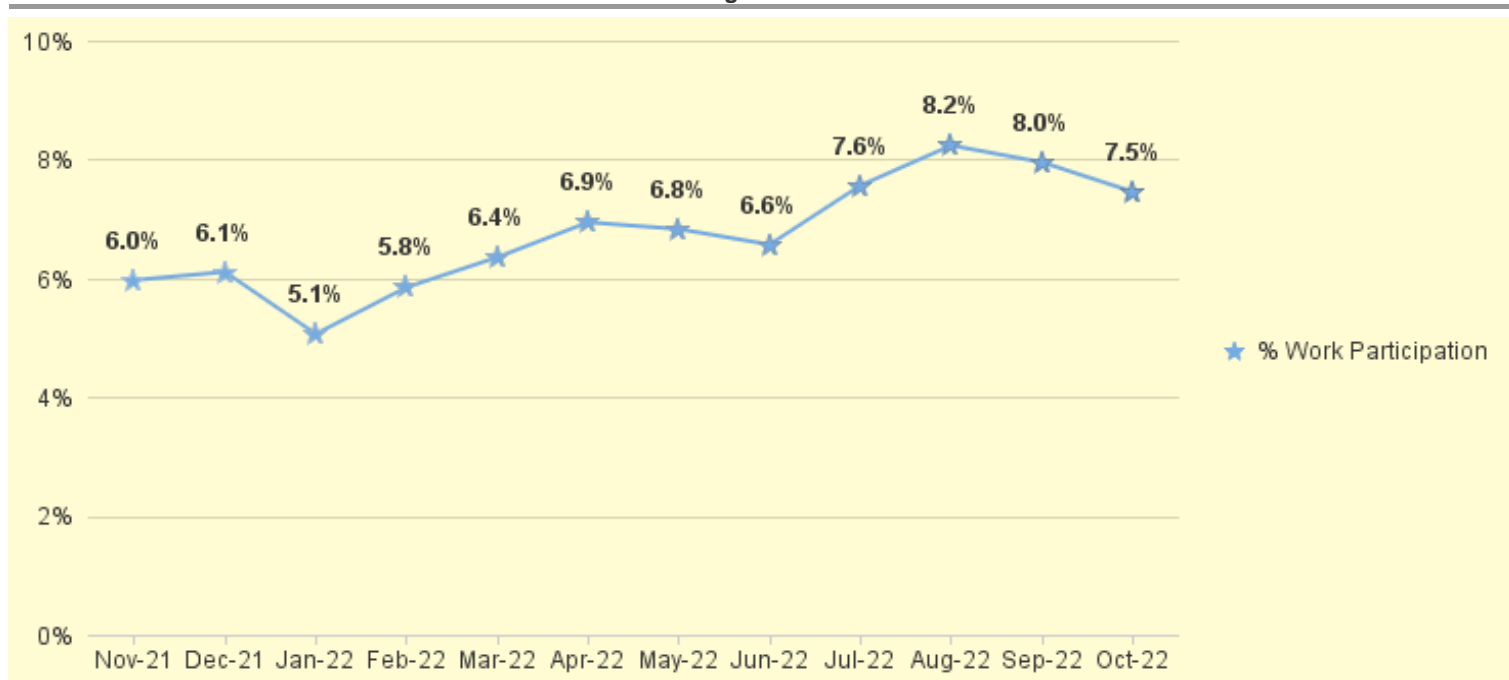
**Work Participation Rates Achieved Over 12 Month Period
Ending with OCTOBER 2022**



Data is derived from NJ MMIS Shared Data Warehouse Issuance files.
Effective July 2013 this data query source was converted to the SDW

TABLE 4 :

**WFNJ/TANF Work Participation Rates
for 12-Month Period Ending with OCTOBER 2022 Statewide**



* The Work Participation rate measures the number of countable Temporary Assistance for Needs Families (TANF) participants based on federal formula. The reported rate is considered to be preliminary until officially calculated by the federal government soon after the close of each federal fiscal year.

TABLE 5 :
NJ SNAP
(FOOD STAMPS) **NUMBER OF PARTICIPATING HOUSEHOLDS, PERSONS, ADULTS**
AND CHILDREN FOR OCTOBER 2022 (STATEWIDE)

OCTOBER 2020 THROUGH OCTOBER 2022

		HOUSEHOLDS				PERSONS					
		WFNJ/ TANF	Other low income	Total	% CHNG (1 YR)	Adults	Children	TOTAL	% CHNG (1 YR)	Age 60+	People with a disability
2020	OCT	10,605	393,716	404,321	17.8%	437,538	350,440	787,978	16.2%	123,068	216,012
	NOV	10,335	395,876	406,211	18.7%	440,136	350,631	790,767	17.1%	123,104	216,208
	DEC	10,308	401,212	411,520	20.8%	446,083	354,408	800,491	19.3%	123,498	221,131
2020	Average	10,790	361,610	372,400		401,036	326,988	728,024		120,180	209,182
2021	JAN	10,214	409,050	419,264	24.8%	454,910	360,490	815,400	23.6%	123,751	221,129
	FEB	9,980	413,080	423,060	25.6%	459,801	362,760	822,561	24.4%	123,888	221,585
	MAR	9,632	418,259	427,891	27.7%	465,302	366,223	831,525	26.5%	124,614	222,961
	APR	9,474	423,186	432,660	24.3%	470,412	369,625	840,037	23.0%	125,182	224,256
	MAY	9,371	428,961	438,332	19.9%	476,827	373,151	849,978	18.4%	125,750	225,339
	JUN	9,833	440,525	450,358	21.8%	490,430	393,310	883,740	21.8%	126,085	227,479
	JUL	9,067	437,889	446,956	18.8%	485,975	379,528	865,503	17.8%	126,552	227,352
	AUG	9,070	442,333	451,403	17.4%	490,577	383,106	873,683	16.7%	127,091	228,513
	SEP	9,561	447,902	457,463	15.8%	497,122	390,345	887,467	15.4%	127,550	229,863
	OCT	9,822	452,139	461,961	14.3%	502,415	388,925	891,340	13.1%	128,700	231,751
	NOV	9,967	455,343	465,310	14.5%	506,476	391,904	898,380	13.6%	129,292	233,050
	DEC	10,138	458,239	468,377	13.8%	510,116	392,757	902,873	12.8%	129,744	238,680
2021	Average	9,677	435,576	445,253		484,197	379,344	863,541		126,517	227,663
2022	JAN	10,418	457,935	468,353	11.7%	509,801	392,651	902,452	10.7%	157,425	236,238
	FEB	10,486	451,733	462,219	9.3%	503,693	385,199	888,892	8.1%	156,540	232,864
	MAR	10,588	455,766	466,354	9.0%	508,290	388,977	897,267	7.9%	158,331	234,617
	APR	10,706	439,659	450,365	4.1%	491,276	375,105	866,381	3.1%	156,504	231,071
	MAY	10,669	423,672	434,341	-0.9%	474,542	360,324	834,866	-1.8%	154,816	227,400
	JUN	10,650	412,366	423,016	-6.1%	462,757	351,378	814,135	-7.9%	154,107	225,452
	JUL	10,910	400,990	411,900	-7.8%	451,428	343,730	795,158	-8.1%	152,494	222,166
	AUG	12,919	421,433	434,352	-3.8%	475,405	401,190	876,595	0.3%	151,643	224,286
	SEP	11,543	391,350	402,893	-11.9%	440,973	348,303	789,276	-11.1%	150,801	220,166
	OCT	11,175	384,016	395,191	-14.5%	433,352	329,837	763,189	-14.4%	152,434	220,723
2022	Average To Date	11,006	423,892	434,898		475,152	367,669	842,821		154,554	227,726

This Table is based on those Households & Persons that recived SNAP issuances (benefits) during the month

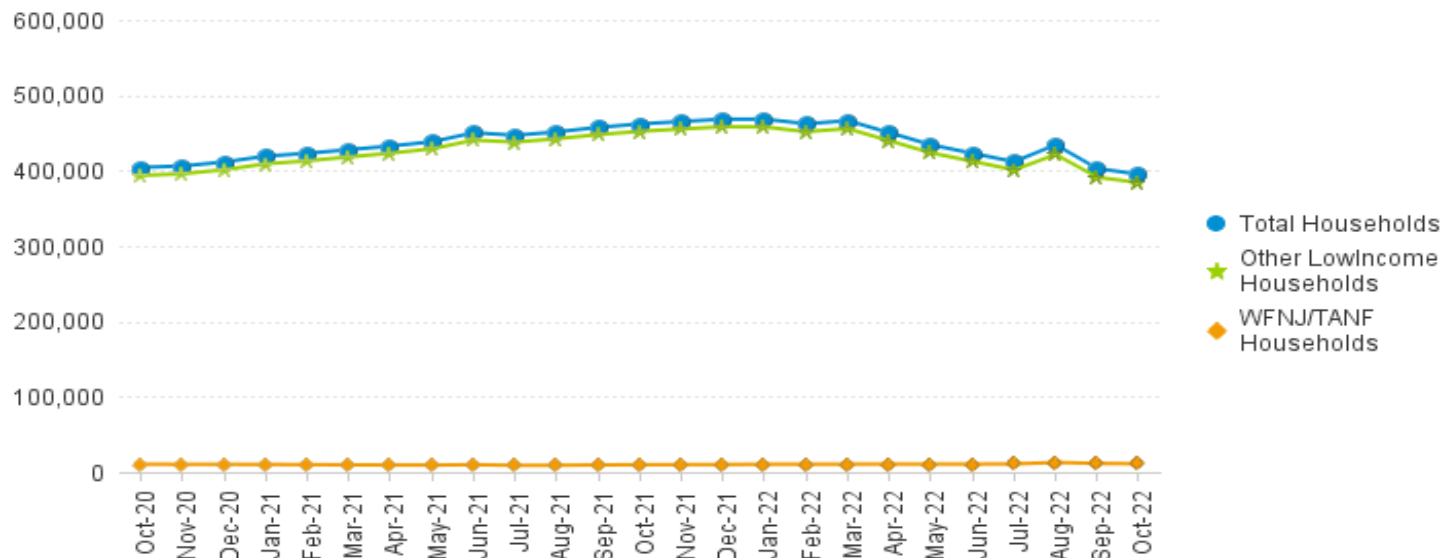
Data is derived from NJ MMIS Shared Data Warehouse.

Effective July 2013 this data query source was converted to the SDW.

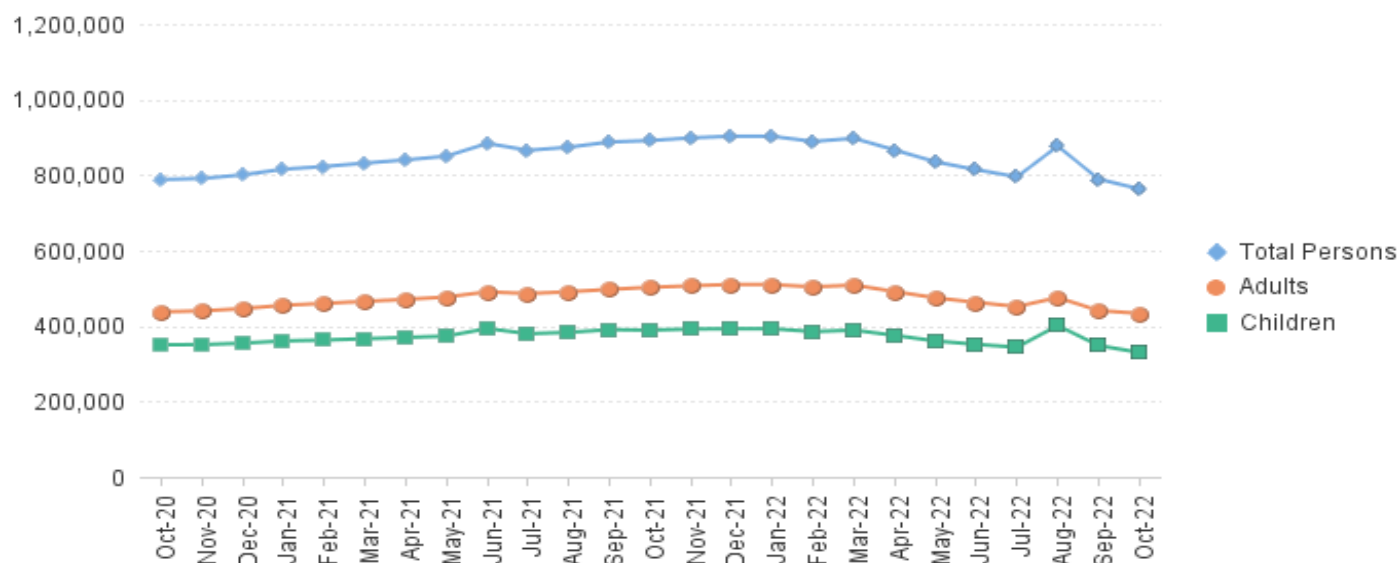
* Age 60+ and People with a disability columns are independent subsets of total persons. An individual might appear in both columns

**TABLE 6: NJ SNAP (FOOD STAMPS)
TRENDS FOR PARTICIPATING HOUSEHOLDS & PERSONS
OCTOBER 2020 THROUGH OCTOBER 2022 (STATEWIDE)**

Statewide NJ SNAP Households: OCTOBER 2020 Through OCTOBER 2022



Statewide NJ SNAP Persons: OCTOBER 2020 Through OCTOBER 2022



Data is derived from NJ MMIS Shared Data Warehouse Issuance files.

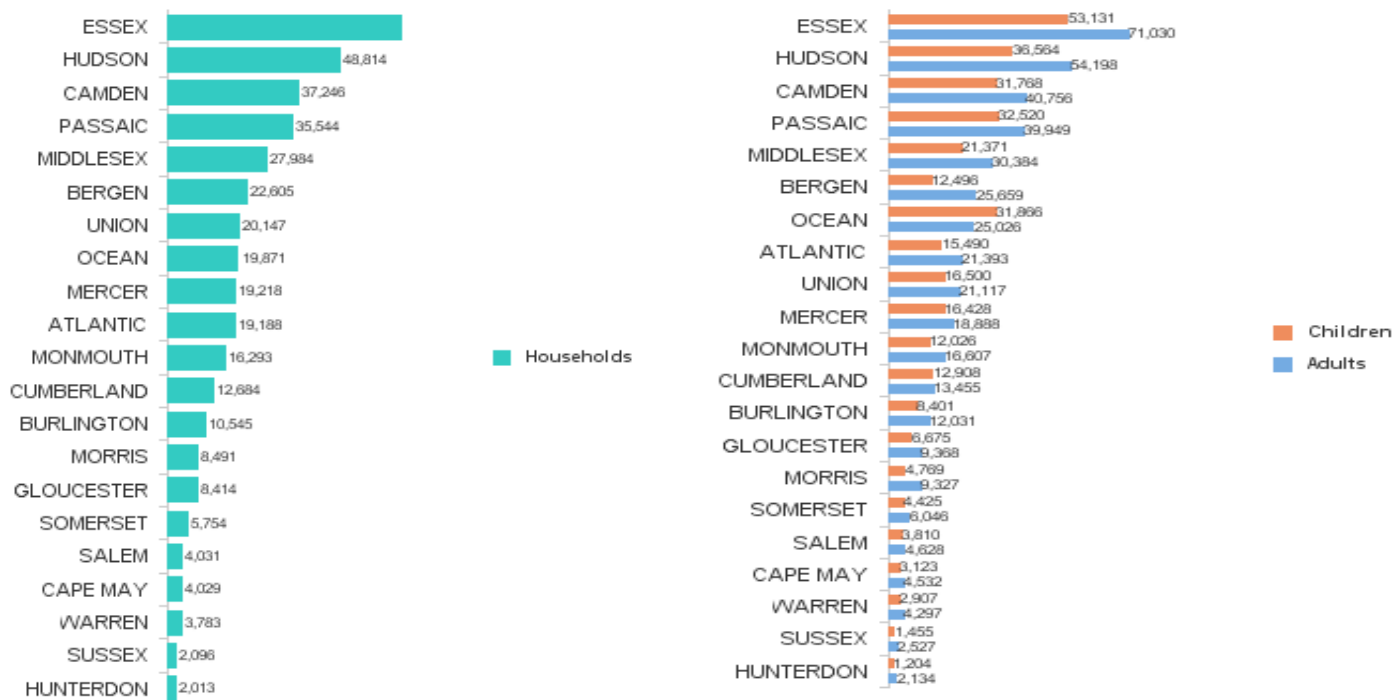
Effective July 2013 this data query source was converted to the SDW

TABLE 7 :
NJ SNAPNUMBER OF PARTICIPATING HOUSEHOLDS, PERSONS, ADULTS
AND CHILDREN BY COUNTY FOR OCTOBER 2022

County	HOUSEHOLDS				PERSONS				Age 60+	People with a disability
	WFNJ/ TANF	Other low income	TOTAL	% Chng (1 Yr)	Adults	Children	TOTAL	% Chng (1 Yr)		
ATLANTIC	639	18,549	19,188	-14.5%	21,393	15,490	36,883	-13.5%	6,783	10,568
BERGEN	374	22,231	22,605	-4.0%	25,659	12,496	38,155	-3.0%	14,018	16,015
BURLINGTON	441	10,104	10,545	-14.5%	12,031	8,401	20,432	-15.4%	3,694	6,522
CAMDEN	1,432	35,814	37,246	-7.0%	40,756	31,768	72,524	-7.0%	10,829	19,554
CAPE MAY	84	3,945	4,029	-5.4%	4,532	3,123	7,655	-4.0%	1,330	2,286
CUMBERLAND	281	12,403	12,684	-8.9%	13,455	12,908	26,363	-7.9%	3,588	7,109
ESSEX	1,751	64,690	66,441	-14.5%	71,030	53,131	124,161	-15.6%	20,285	30,968
GLOUCESTER	254	8,160	8,414	-13.2%	9,368	6,675	16,043	-13.5%	3,013	5,935
HUDSON	1,628	47,186	48,814	-26.0% *	54,198	36,564	90,762	-24.9% *	21,469	27,285
HUNTERDON	49	1,964	2,013	4.8% Δ	2,134	1,204	3,338	3.3% Δ	768	1,144
MERCER	810	18,408	19,218	-3.4% Δ	18,888	16,428	35,316	-3.5%	5,639	10,501
MIDDLESEX	613	27,371	27,984	-8.7%	30,384	21,371	51,755	-9.7%	13,908	17,586
MONMOUTH	240	16,053	16,293	-11.7%	16,607	12,026	28,633	-12.1%	6,864	9,864
MORRIS	118	8,373	8,491	-5.1%	9,327	4,769	14,096	-6.3%	4,838	5,457
OCEAN	380	19,491	19,871	-1.8% Δ	25,026	31,866	56,892	-0.5% Δ	6,771	10,666
PASSAIC	1,028	34,516	35,544	-24.9% *	39,949	32,520	72,469	-25.6% *	14,529	18,302
SALEM	182	3,849	4,031	-3.4% Δ	4,628	3,810	8,438	-0.6% Δ	1,173	2,319
SOMERSET	206	5,548	5,754	-8.3%	6,046	4,425	10,471	-8.1%	2,513	3,514
SUSSEX	41	2,055	2,096	-6.0%	2,527	1,455	3,982	-3.7%	912	1,526
UNION	531	19,616	20,147	-27.0% *	21,117	16,500	37,617	-28.4% *	8,170	11,188
WARREN	93	3,690	3,783	-11.6%	4,297	2,907	7,204	-12.3%	1,340	2,414
NJ TOTAL	11,175	384,016	395,191	-14.5%	433,352	329,837	763,189	-14.4%	152,434	220,723

Δ=higher caseload % change

*=lower caseload % change

Total NJ SNAP Recipients
OCTOBER 2022 by County

Data is derived from NJ MMIS Shared Data Warehouse.

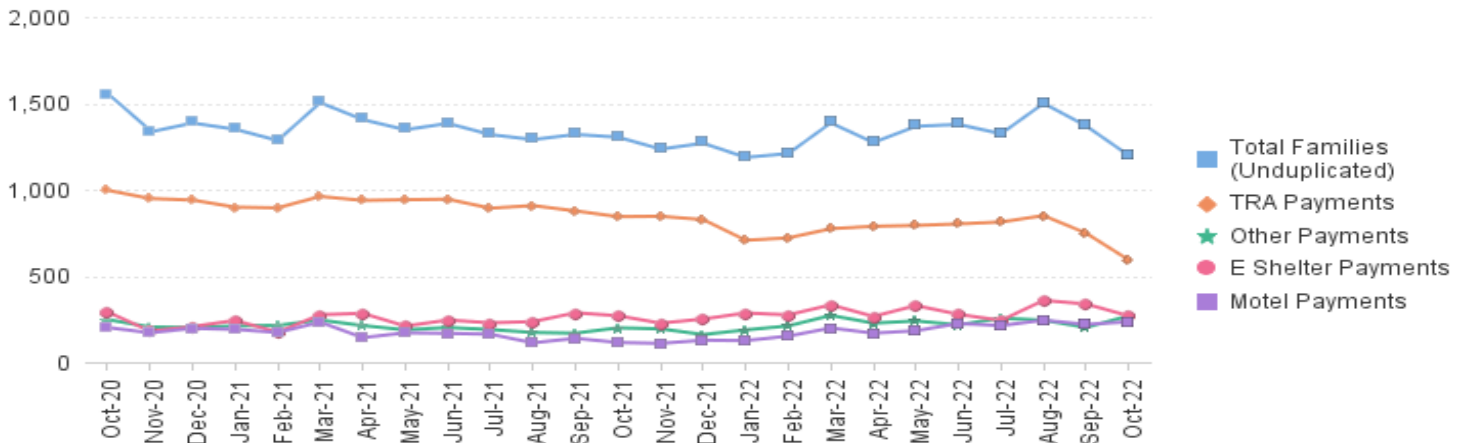
Effective July 2013 this data query source was converted to the SDW.

* Age 60+ and People with a disability columns are independent subsets of total persons. An individual might appear in both columns

TABLE 8 :
EMERGENCY ASSISTANCE (STATEWIDE)
TOTAL NUMBER OF ELIGIBLE FAMILIES RECEIVING EMERGENCY ASSISTANCE PAYMENTS
OCTOBER 2020 THROUGH OCTOBER 2022 - STATEWIDE

		Total WFNJ/EA Families (Undupl)		Temp Rent Asst. Payments (Undupl)		Motel Housing Payments (Undupl)		Shelter/Transitional Housing Payments (Undupl)		Other WFNJ/EA Payments (Undupl)	
			% CHNG (1 YR)		% CHNG (1 YR)		% CHNG (1 YR)		% CHNG (1 YR)		% CHNG (1 YR)
2020	OCT	1,558	-14.5%	996	16.1%	201	-17.6%	292	-42.5%	247	-54.8%
	NOV	1,343	-13.6%	948	8.8%	170	19.7%	180	-52.9%	204	-50.6%
	DEC	1,395	-14.5%	939	9.8%	196	2.1%	206	-53.2%	201	-51.8%
2020	Average	1,560		970		220		303		274	
2021	JAN	1,359	-23.1%	898	-5.4%	190	-24.3%	242	-42.7%	210	-59.1%
	FEB	1,294	-19.1%	894	-4.1%	172	-5.0%	174	-52.3%	213	-47.9%
	MAR	1,513	-12.2%	960	-2.0%	232	19.0%	275	-32.3%	244	-47.2%
	APR	1,415	-2.7%	937	-2.4%	142	-7.2%	283	-15.3%	212	47.2%
	MAY	1,356	-6.1%	941	5.7%	170	-28.6%	209	-22.6%	187	14.7%
	JUN	1,393	-14.6%	944	-6.9%	167	-37.0%	244	-20.0%	201	-14.1%
	JUL	1,328	-14.7%	892	-12.0%	162	-35.5%	228	-10.2%	189	-19.2%
	AUG	1,299	-20.0%	907	-9.8%	112	-59.9%	235	-22.4%	172	-27.7%
	SEP	1,329	-18.2%	876	-13.9%	138	-46.5%	286	-2.7%	168	-28.2%
	OCT	1,313	-15.7%	843	-15.4%	114	-43.3%	269	-7.9%	199	-19.4%
	NOV	1,244	-7.4%	845	-10.9%	109	-35.9%	226	25.6%	193	-5.4%
	DEC	1,278	-8.4%	826	-12.0%	127	-35.2%	250	21.4%	160	-20.4%
2021	Average	1,343		897		153		243		196	
2022	JAN	1,196	-12.0%	706	-21.4%	125	-34.2%	285	17.8%	187	-11.0%
	FEB	1,218	-5.9%	720	-19.5%	151	-12.2%	274	57.5%	210	-1.4%
	MAR	1,396	-7.7%	773	-19.5%	198	-14.7%	332	20.7%	271	11.1%
	APR	1,282	-9.4%	787	-16.0%	168	18.3%	265	-6.4%	226	6.6%
	MAY	1,376	1.5%	792	-15.8%	182	7.1%	328	56.9%	239	27.8%
	JUN	1,387	-0.4%	801	-15.1%	224	34.1%	277	13.5%	216	7.5%
	JUL	1,333	0.4%	812	-9.0%	212	30.9%	242	6.1%	255	34.9%
	AUG	1,509	16.2%	849	-6.4%	243	117.0%	358	52.3%	243	41.3%
	SEP	1,378	3.7%	747	-14.7%	219	58.7%	337	17.8%	201	19.6%
	OCT	1,207	-8.1%	592	-29.8%	234	105.3%	268	-0.4%	269	35.2%
2022	Average to date	1,328		758		196		297		232	

NJ STATEWIDE
Families Receiving Emergency Assistance
OCTOBER 2020 THROUGH OCTOBER 2022



WFNJ/EA data is derived from NJ MMIS Shared Data Warehouse.
Effective July 2013 this data query source was converted to the SDW.

* Effective Feb '11 Transitional Housing Payments were removed from 'Other EA Payments' and added to 'Shelter Payments'.

TABLE 9 :

EMERGENCY
ASSISTANCE
(BY COUNTY)TOTAL NUMBER OF ELIGIBLE FAMILIES RECEIVING EMERGENCY ASSISTANCE PAYMENTS
BY COUNTY (UNDUPLICATED CASES) FOR OCTOBER 2022

County	TOTAL WFNJ/EA Families (Undupl)	% CHNG From OCT 21		Temp Rent Asst. Payments (Undupl)	Motel Housing Payments (Undupl)	Shelter/Transitional Housing Payments (Undupl)	Other WFNJ/EA Payments (Undupl)	SSI Recipients Receiving EA **
ATLANTIC	18	-61.7%	*	14	0	0	8	37
BERGEN	44	2.3%		30	0	10	6	44
BURLINGTON	81	88.4%		9	55	17	4	35
CAMDEN	50	28.2%		7	10	32	2	24
CAPE MAY	15	15.4%		5	11	0	0	15
CUMBERLAND	0	0%		0	0	0	0	0
ESSEX	109	-33.5%	*	23	0	77	11	7
GLOUCESTER	24	118.2%	Δ	3	0	7	15	5
HUDSON	215	2.9%		171	13	15	71	42
HUNTERDON	8	-11.1%		6	0	0	4	7
MERCER	109	16.0%		68	11	3	42	77
MIDDLESEX	93	-13.9%		41	32	15	27	30
MONMOUTH	36	56.5%		1	9	27	1	27
MORRIS	18	63.6%		2	15	0	2	21
OCEAN	58	-31.8%		32	23	0	11	22
PASSAIC	149	-36.6%	*	91	7	36	32	31
SALEM	6	100.0%	Δ	3	0	2	2	1
SOMERSET	71	6.0%		47	8	8	16	56
SUSSEX	3	200.0%	Δ	0	2	1	0	1
UNION	93	-5.1%		37	34	18	14	30
WARREN	7	-30.0%		2	4	0	1	3
NJ Total	1,207	-8.1%		592	234	268	269	515

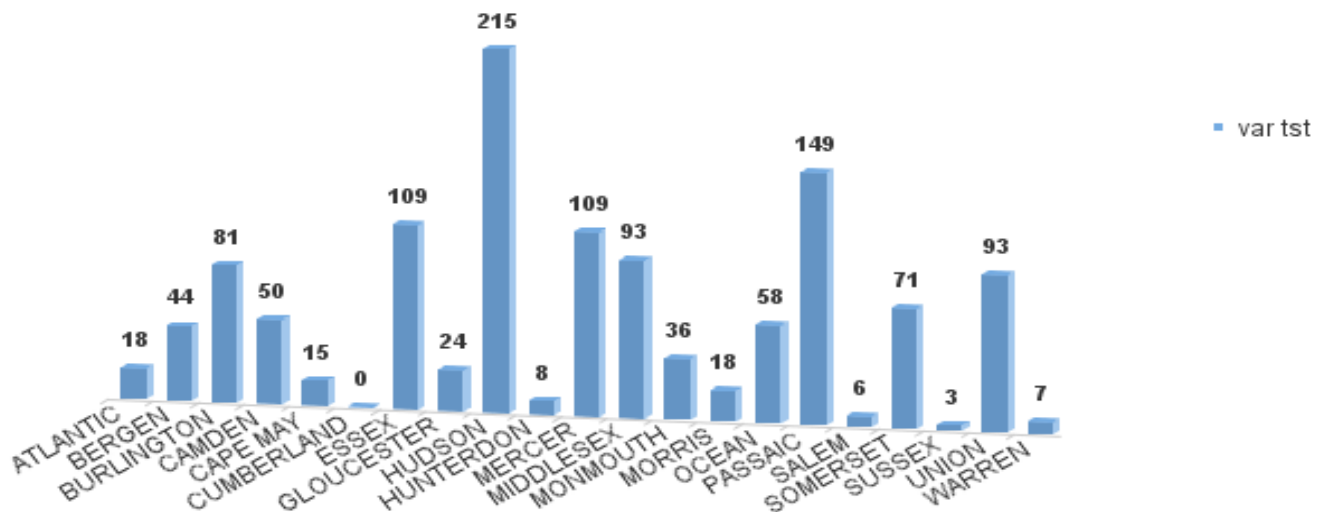
Δ=higher caseload % change

*=lower caseload % change

** SSI-EA includes pay codes 22 and 24, data is derived from NJ Division of Family Development FAMIS Report #FM430-03A

WFNJ/EA data is derived from NJ MMIS Shared Data Warehouse.

Effective July 2013 this data query source was converted to the SDW.

Number WFNJ Families Receiving EA by County
OCTOBER 2022

**TABLE 10:
GENERAL
ASSISTANCE
PROGRAM**

**NUMBER OF EMPLOYABLE AND UNEMPLOYABLE RECIPIENTS
AND EMERGENCY ASSISTANCE PAYMENTS - STATEWIDE
OCTOBER 2020 THROUGH OCTOBER 2022**

PROGRAM	Total Cases						Emergency Assistance Cases			
	Employable	% Chng (1 Yr)	Unemployable	% Chng (1 Yr)	Total	% Chng (1 Yr)	Temporary Rental Assistance	Other GA-EA	Total	% Chng (1 Yr)
2020 OCT	8,156	104.9%	4,988	-17.1%	13,144	31.5%	855	1,107	1,962	-11.2%
NOV	8,228	111.0%	4,822	-19.5%	13,050	32.0%	835	884	1,719	-17.2%
DEC	8,540	118.0%	4,691	-21.9%	13,231	33.3%	833	1,111	1,944	-4.7%
2020 AVERAGE	6,875		5,461		12,337		885	1,110	1,995	
2021 JAN	8,978	118.5%	4,553	-23.1%	13,531	34.9%	848	1,240	2,088	-1.8%
FEB	9,089	116.1%	4,407	-25.7%	13,496	33.2%	809	991	1,800	-10.3%
MAR	9,630	97.8%	4,421	-26.2%	14,051	29.4%	819	1,405	2,224	11.4%
APR	9,499	70.0%	4,288	-26.9%	13,787	20.4%	832	1,204	2,036	15.2%
MAY	9,630	38.8%	4,421	-23.6%	14,051	10.5%	819	491	1,310	-28.7%
JUN	9,007	18.7%	4,130	-32.8%	13,247	0.1%	794	1,108	1,902	-12.4%
JUL	9,090	13.7%	4,078	-26.1%	13,168	-2.6%	833	1,121	1,954	-9.6%
AUG	9,120	12.3%	3,982	-24.3%	13,102	-2.1%	753	1,091	1,844	-10.6%
SEP	9,045	10.6%	3,914	-23.7%	12,959	-2.6%	787	1,114	1,901	-12.9%
OCT	9,309	14.1%	3,875	-22.3%	13,184	0.3%	757	1,061	1,818	-7.3%
NOV	9,668	17.5%	3,853	-20.1%	13,521	3.6%	711	1,011	1,722	0.2%
DEC	10,040	17.6%	3,855	-17.8%	13,895	5.0%	742	1,071	1,813	-6.7%
2021 AVERAGE	9,342		4,148		13,499		792	1,076	1,868	
2022 JAN	10,239	14.0%	3,801	-16.5%	14,040	3.8%	677	947	1,624	-22.2%
FEB	10,687	17.6%	3,812	-13.5%	14,499	7.4%	727	1,126	1,853	2.9%
MAR	11,462	19.0%	3,870	-12.5%	15,332	9.1%	719	1,399	2,118	-4.8%
APR	11,810	24.3%	3,823	-10.8%	15,633	13.4%	742	1,196	1,938	-4.8%
MAY	12,039	25.0%	3,805	-13.9%	15,844	12.8%	750	1,152	1,902	45.2%
JUN	12,306	36.6%	3,858	-6.6%	16,164	22.0%	782	1,250	2,032	6.8%
JUL	12,451	37.0%	3,862	-5.3%	16,313	23.9%	758	1,196	1,954	0.0%
AUG	9,785	7.3%	3,342	-16.1%	13,127	0.2%	691	1,396	2,087	13.2%
SEP	8,370	-7.5%	3,225	-17.6%	11,595	-10.5%	635	1,261	1,896	-0.3%
OCT	7,829	-15.9%	3,291	-15.1%	11,120	-15.7%	574	1,184	1,758	-3.3%
2022 AVERAGE TO DATE	10,698		3,669		14,367		706	1,211	1,916	

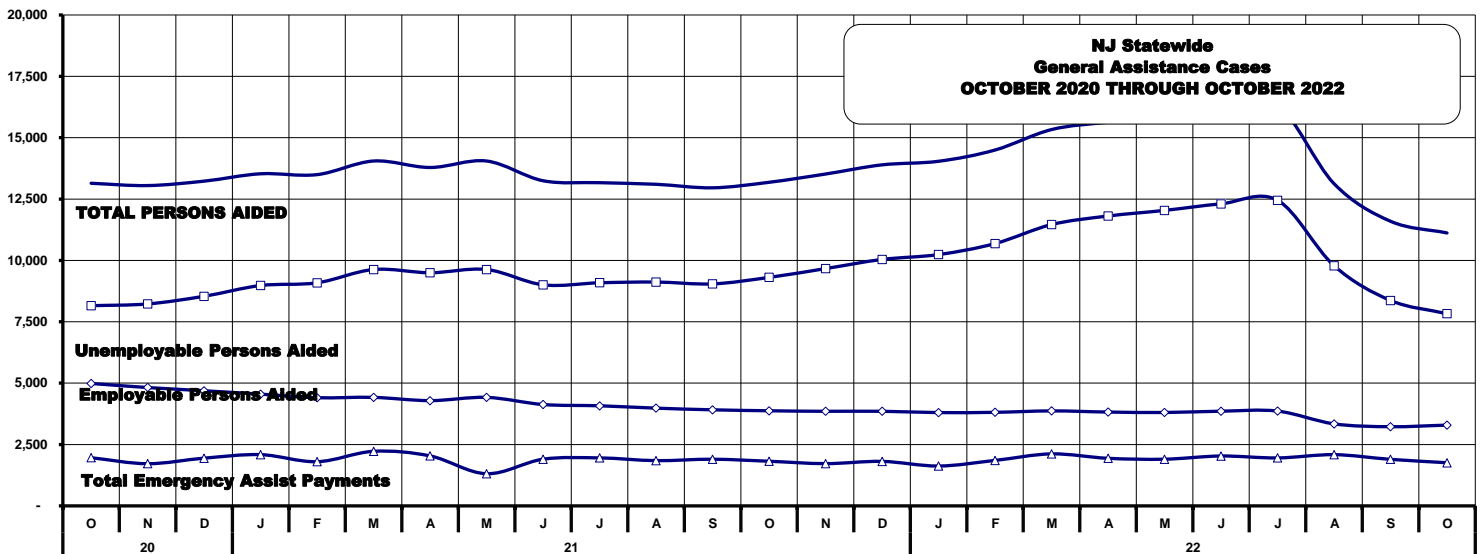


TABLE 11:
GENERAL
ASSISTANCE
PROGRAM

EMPLOYABLE AND UNEMPLOYABLE CASES
AND EMERGENCY ASSISTANCE CASES RECEIVING PAYMENTS BY COUNTY
OCTOBER 2022

	Total Cases						Emergency Assistance Cases			
	Employable	% Chng (1 Yr)	Unemployable	% Chng (1 Yr)	Total	% Chng (1 Yr)	Temporary Rental Assistance	Other GA-EA	Total	% Chng (1 Yr)
ATLANTIC	904	7.4%	158	-16.4%	1,062	3.0%	53	17	70	-16.7%
BERGEN	270	-12.6%	230	29.2%	500	2.7%	78	25	103	-3.7%
BURLINGTON	319	-3.9%	118	-41.6%	437	-18.2%	10	94	104	3.0%
CAMDEN	1,303	-7.6%	412	-10.2%	1,715	-8.2%	31	88	119	-7.8%
CAPE MAY	114	48.1%	45	12.5%	159	35.9%	13	37	50	42.9%
CUMBERLAND	219	-21.8%	129	43.3%	348	-5.9%	0	2	2	0.0%
ESSEX	752	-16.4%	195	-34.6%	947	-20.9%	9	213	222	100.0%
GLOUCESTER	181	24.8%	110	-8.3%	291	9.8%	1	15	16	14.3%
HUDSON	935	-50.6%	256	-46.7%	1,191	-49.8%	87	90	177	-29.2%
HUNTERDON	106	-0.9%	62	55.0%	168	14.3%	11	24	35	-7.9%
MERCER	437	6.1%	239	-14.3%	676	-2.2%	41	61	102	6.3%
MIDDLESEX	337	-25.3%	309	-4.9%	646	-16.8%	76	97	173	-9.4%
MONMOUTH	201	-11.5%	174	9.4%	375	-2.8%	0	92	92	4.5%
MORRIS	183	40.8%	146	-3.9%	329	16.7%	44	41	85	44.1%
OCEAN	322	-0.3%	200	-7.8%	522	-3.3%	28	75	103	-4.6%
PASSAIC	331	-31.6%	152	-51.0%	483	-39.2%	27	15	42	-48.1%
SALEM	92	-27.6%	51	59.4%	143	-10.1%	1	1	2	-60.0%
SOMERSET	205	50.7%	54	-5.3%	259	34.2%	36	66	102	75.9%
SUSSEX	29	-39.6%	18	-21.7%	47	-33.8%	0	3	3	-80.0%
UNION	516	-5.8%	168	17.5%	684	-1.0%	19	104	123	-35.6%
WARREN	73	-43.0%	65	-20.7%	138	-34.3%	9	24	33	-40.0%
NJ TOTAL	7,829	-15.9%	3,291	-15.1%	#####	-15.7%	574	1,184	1,758	-3.3%

Δ= ↑ Caseload %

* = ↓ Caseload %

**TABLE 12:
OFFICE OF
CHILD SUPPORT
SERVICES**

**OFFICE OF CHILD SUPPORT SERVICES
QUARTERLY PERFORMANCE REPORT
STATE SUMMARY
TITLE IV-D SOURCE COLLECTION REPORT**

Comparison of Quarter-4 (FFY 2021 vs. FFY 2022)

COLLECTION SOURCE	TOTAL 7/1/2021 - 9/30/2021	% OF TOTAL COLLECTIONS	TOTAL 7/1/2022 - 9/30/2022	% OF TOTAL COLLECTIONS	DOLLAR CHANGE	% CHANGE
FEDERAL TAX	\$13,351,212	4.52%	\$5,398,777	2.04%	\$ (7,952,435)	-59.56%
STATE TAX	\$3,589,417	1.22%	\$2,387,266	0.90%	\$ (1,202,151)	-33.49%
UIB	\$26,526,653	8.99%	\$4,507,218	1.70%	\$ (22,019,435)	-83.01%
INC WITHHOLD	\$182,792,079	61.94%	\$182,713,102	68.89%	\$ (78,977)	-0.04%
FROM OTHER STATES	\$11,450,421	3.88%	\$10,397,202	3.92%	\$ (1,053,219)	-9.20%
ADMIN ENFORCEMENT	\$6,297,192	2.13%	\$4,636,386	0.02	\$ (1,660,805)	-26.37%
OTHER	\$51,080,910	17.31%	\$55,190,514	20.81%	\$ 4,109,604	8.05%
TOTAL COLLECTIONS*	\$295,087,884	100%	\$265,230,465	100%	\$ (29,857,418)	-10.12%
DISBURSED COLLECTIONS**	\$257,920,003		\$229,364,911		\$ (28,555,092)	-11.07%

* Includes collections on both current support and arrears.

** Includes collections on both current support and arrears; also includes money sent to other states.

SOURCE: NJKiDS (Based on Federal Quarterly Report of Collections - OCSE-34A except Disbursed Collections)

Disbursed Collections obtained from Federal Data Report - OCSE-157, which is reported annually to Congress and used in the calculation of incentive dollars earned by each state.

TABLE 13:
OFFICE OF
CHILD SUPPORT
SERVICES

OFFICE OF CHILD SUPPORT SERVICES
STATE SUMMARY
TITLE IV-D PATERNITY ESTABLISHMENT REPORT
Comparison of October (FFY 2022 vs. FFY 2023)

County	OCTOBER 2021			OCTOBER 2022			Increase or Decrease (-) from FFY 2022 to FFY 2023
	Total Children Born Out of Wedlock*	Number of Paternities Established	Percent of Paternities Established	Total Children Born Out of Wedlock*	Number of Paternities Established	Percent of Paternities Established	
Atlantic	5,563	5,533	99.5%	5,081	5,044	99.3%	-0.2%
Bergen	2,748	2,697	98.1%	2,544	2,499	98.2%	0.1%
Burlington	4,290	4,183	97.5%	3,879	3,845	99.1%	1.6%
Camden	14,008	13,692	97.7%	12,856	12,567	97.8%	0.0%
Cape May	1,071	1,057	98.7%	929	947	101.9%	3.2%
Cumberland	5,941	5,889	99.1%	5,593	5,557	99.4%	0.2%
Essex	21,461	20,518	95.6%	19,503	18,611	95.4%	-0.2%
Gloucester	3,797	3,764	99.1%	3,439	3,415	99.3%	0.2%
Hudson	8,559	8,299	97.0%	7,913	7,647	96.6%	-0.3%
Hunterdon	205	205	100.0%	181	180	99.4%	-0.6%
Mercer	5,938	5,778	97.3%	5,395	5,233	97.0%	-0.3%
Middlesex	5,575	5,437	97.5%	5,122	5,012	97.9%	0.3%
Monmouth	4,249	4,123	97.0%	3,759	3,662	97.4%	0.4%
Morris	1,074	1,061	98.8%	949	953	100.4%	1.6%
Ocean	4,249	4,161	97.9%	3,936	3,857	98.0%	0.1%
Passaic	8,735	8,471	97.0%	7,909	7,711	97.5%	0.5%
Salem	2,444	2,360	96.6%	2,365	2,288	96.7%	0.2%
Somerset	1,194	1,158	97.0%	1,047	1,033	98.7%	1.7%
Sussex	428	429	100.2%	409	417	102.0%	1.7%
Union	9,131	8,749	95.8%	8,756	8,375	95.6%	-0.2%
Warren	727	734	101.0%	607	609	100.3%	-0.6%
NJ TOTALS	111,387	108,298	97.2%	102,172	99,462	97.3%	0.1%

SOURCE: NJKIDS (Based on Federal Performance Measures - OCSE-157)

* Information on Out of Wedlock Births obtained from NJ Bureau of Vital Statistics

TABLE 14:
OFFICE OF
CHILD SUPPORT
SERVICES

OFFICE OF CHILD SUPPORT SERVICES
STATE SUMMARY
TITLE IV-D REPORT OF CASES WITH ORDERS
Comparison of October (FFY 2022 vs. FFY 2023)

County	OCTOBER 2021			OCTOBER 2022			Increase or Decrease (-) from FFY 2022 to FFY 2023
	Total Cases	Cases with Orders	% of Cases with Orders	Total Cases	Cases with Orders	% of Cases with Orders	
Atlantic	10,352	9,598	92.7%	9,831	9,091	92.5%	-0.2%
Bergen	10,452	10,181	97.4%	10,066	9,783	97.2%	-0.2%
Burlington	11,388	10,803	94.9%	11,073	10,234	92.4%	-2.4%
Camden	25,413	24,253	95.4%	24,381	22,849	93.7%	-1.7%
Cape May	2,635	2,515	95.4%	2,481	2,366	95.4%	-0.1%
Cumberland	10,697	10,283	96.1%	10,343	9,768	94.4%	-1.7%
Essex	35,462	31,242	88.1%	34,011	29,496	86.7%	-1.4%
Gloucester	9,131	8,799	96.4%	8,780	8,357	95.2%	-1.2%
Hudson	17,415	15,834	90.9%	16,961	15,135	89.2%	-1.7%
Hunterdon	1,244	1,169	94.0%	1,156	1,085	93.9%	-0.1%
Mercer	11,553	10,591	91.7%	11,262	10,073	89.4%	-2.2%
Middlesex	15,128	14,270	94.3%	14,830	13,730	92.6%	-1.7%
Monmouth	11,573	11,066	95.6%	10,856	10,189	93.9%	-1.8%
Morris	5,077	4,931	97.1%	4,852	4,693	96.7%	-0.4%
Ocean	12,726	12,313	96.8%	12,226	11,756	96.2%	-0.6%
Passaic	16,810	14,943	88.9%	16,039	14,082	87.8%	-1.1%
Salem	3,704	3,552	95.9%	3,577	3,373	94.3%	-1.6%
Somerset	3,977	3,755	94.4%	3,783	3,483	92.1%	-2.3%
Sussex	2,258	2,225	98.5%	2,225	2,167	97.4%	-1.1%
Union	16,212	15,442	95.3%	15,704	14,866	94.7%	-0.6%
Warren	2,415	2,317	95.9%	2,220	2,107	94.9%	-1.0%
NJ TOTALS	235,622	220,082	93.4%	226,657	208,683	92.1%	-1.3%

SOURCE: NJKIDS (Based on Federal Performance Measures - OCSE-157)

TABLE 15:
OFFICE OF
CHILD SUPPORT
SERVICES

OFFICE OF CHILD SUPPORT SERVICES
STATE SUMMARY
TITLE IV-D COLLECTIONS ON CURRENT SUPPORT
Comparison of October (FFY 2022 vs. FFY 2023)

County	OCTOBER 2021			OCTOBER 2022			Increase or Decrease (-) from FFY 2022 to FFY 2023
	Total Current Support Due	Total Current Support Distributed	Total Collection Rate	Total Current Support Due	Total Current Support Distributed	Total Collection Rate	
Atlantic	\$3,342,790	\$2,084,875	62.4%	\$3,229,248	\$2,031,368	62.9%	0.5%
Bergen	\$7,338,117	\$5,454,545	74.3%	\$7,063,346	\$5,393,484	76.4%	2.0%
Burlington	\$4,948,920	\$3,388,739	68.5%	\$4,748,839	\$3,214,557	67.7%	-0.8%
Camden	\$7,113,122	\$4,199,448	59.0%	\$6,669,101	\$3,935,177	59.0%	0.0%
Cape May	\$976,454	\$640,194	65.6%	\$897,525	\$601,064	67.0%	1.4%
Cumberland	\$2,731,716	\$1,545,751	56.6%	\$2,581,708	\$1,510,328	58.5%	1.9%
Essex	\$9,385,760	\$5,435,340	57.9%	\$8,981,607	\$5,269,040	58.7%	0.8%
Gloucester	\$3,739,456	\$2,468,336	66.0%	\$3,461,176	\$2,292,706	66.2%	0.2%
Hudson	\$6,496,281	\$4,270,700	65.7%	\$6,236,118	\$4,072,289	65.3%	-0.4%
Hunterdon	\$1,064,146	\$856,960	80.5%	\$960,546	\$810,609	84.4%	3.9%
Mercer	\$3,523,062	\$2,213,953	62.8%	\$3,421,415	\$2,172,327	63.5%	0.7%
Middlesex	\$6,610,197	\$4,497,227	68.0%	\$6,328,204	\$4,307,519	68.1%	0.0%
Monmouth	\$6,192,843	\$4,513,302	72.9%	\$5,753,894	\$4,139,348	71.9%	-0.9%
Morris	\$3,828,214	\$2,792,307	72.9%	\$3,655,327	\$2,686,374	73.5%	0.6%
Ocean	\$5,747,784	\$4,085,595	71.1%	\$5,446,600	\$3,852,345	70.7%	-0.4%
Passaic	\$5,724,220	\$3,531,096	61.7%	\$5,394,122	\$3,398,190	63.0%	1.3%
Salem	\$995,829	\$588,636	59.1%	\$959,316	\$570,650	59.5%	0.4%
Somerset	\$2,635,832	\$2,100,258	79.7%	\$2,355,708	\$1,914,163	81.3%	1.6%
Sussex	\$1,550,411	\$1,169,423	75.4%	\$1,472,669	\$1,100,801	74.7%	-0.7%
Union	\$6,107,599	\$4,119,439	67.4%	\$6,002,990	\$4,030,298	67.1%	-0.3%
Warren	\$1,099,451	\$788,140	71.7%	\$1,048,564	\$773,280	73.7%	2.1%
NJ TOTALS	\$91,152,204	\$60,744,264	66.6%	\$86,668,021	\$58,075,919	67.0%	0.4%

SOURCE: NJKIDS (Based on Federal Performance Measures - OCSE-157)

TABLE 16:
OFFICE OF
CHILD SUPPORT
SERVICES

OFFICE OF CHILD SUPPORT SERVICES
STATE SUMMARY
TITLE IV-D CASES ARREARS COLLECTION REPORT
Comparison of October (FFY 2022 vs. FFY 2023)

County	OCTOBER 2021			OCTOBER 2022			Increase or Decrease (-) from FFY 2022 to FFY 2023
	Total Cases with Arrears	Total Amount Collected	Average Arrears Collection per Case	Total Cases with Arrears	Total Amount Collected	Average Arrears Collection per Case	
Atlantic	6,289	\$558,967	\$88.88	6,099	\$762,275	\$124.98	\$36.10
Bergen	6,513	\$943,899	\$144.93	6,419	\$990,303	\$154.28	\$9.35
Burlington	7,079	\$966,106	\$136.47	6,784	\$813,093	\$119.85	-\$16.62
Camden	14,561	\$1,567,682	\$107.66	13,806	\$1,489,159	\$107.86	\$0.20
Cape May	1,695	\$144,595	\$85.31	1,603	\$168,013	\$104.81	\$19.50
Cumberland	6,400	\$501,916	\$78.42	6,085	\$557,030	\$91.54	\$13.12
Essex	19,197	\$2,077,320	\$108.21	18,106	\$2,011,224	\$111.08	\$2.87
Gloucester	5,747	\$617,057	\$107.37	5,526	\$631,869	\$114.34	\$6.97
Hudson	10,598	\$1,287,815	\$121.51	10,294	\$1,071,683	\$104.11	-\$17.41
Hunterdon	720	\$136,670	\$189.82	676	\$135,681	\$200.71	\$10.89
Mercer	7,011	\$798,053	\$113.83	6,795	\$726,749	\$106.95	-\$6.88
Middlesex	9,341	\$1,233,814	\$132.09	8,943	\$1,078,919	\$120.64	-\$11.44
Monmouth	7,033	\$970,833	\$138.04	6,577	\$923,120	\$140.36	\$2.32
Morris	3,263	\$570,703	\$174.90	3,137	\$430,361	\$137.19	-\$37.71
Ocean	7,638	\$956,302	\$125.20	7,276	\$940,841	\$129.31	\$4.10
Passaic	9,907	\$987,668	\$99.69	9,395	\$1,086,933	\$115.69	\$16.00
Salem	2,141	\$184,123	\$86.00	2,075	\$201,325	\$97.02	\$11.03
Somerset	2,408	\$350,329	\$145.49	2,299	\$406,652	\$176.88	\$31.40
Sussex	1,434	\$226,780	\$158.15	1,425	\$182,695	\$128.21	-\$29.94
Union	9,871	\$1,159,365	\$117.45	9,629	\$1,154,111	\$119.86	\$2.41
Warren	1,501	\$184,551	\$122.95	1,402	\$183,980	\$131.23	\$8.27
NJ TOTALS	140,347	\$16,424,548	\$117.03	134,351	\$15,946,016	\$118.69	\$1.66

SOURCE: OCSE-157 Child Support Enforcement Annual Data Report

Table 17**WORK FIRST NEW JERSEY STATISTICAL SUMMARY****WFNJ****Oct 2022**

COUNTY	EMPLOYMENT DIRECTED ACTIVITIES			EMPLOYED OPEN (WFNJ RECIPIENT)	SUPPORT SERVICES ON ACTIVE CASE		CLOSED FOR EMPLOYMENT THIS MONTH	POST ASSISTANCE CHILD CARE
	CWEP	ALL OTHER TRAINING	JOB SEARCH		CHILD CARE	TRAINING REL. EXPENSES		
ATLANTIC	12	53	45	45	36	77	7	20
BERGEN	15	1	35	11	31	1	0	1
BURLINGTON	108	17	67	23	27	15	3	7
CAMDEN	48	106	12	60	67	1	17	11
CAPE MAY	0	15	1	8	1	4	1	3
CUMBERLAND	0	8	28	13	14	42	5	1
ESSEX	32	184	2	74	54	92	16	51
GLOUCESTER	27	11	2	32	16	12	10	4
HUDSON	2	362	45	95	178	150	30	14
HUNTERDON	0	0	0	0	3	0	2	0
MERCER	0	116	3	53	103	56	14	47
MIDDLESEX	0	42	63	25	21	0	6	7
MONMOUTH	2	19	0	16	19	3	3	15
MORRIS	0	5	2	1	1	0	1	0
OCEAN	1	96	0	8	18	15	3	10
PASSAIC	14	66	3	23	30	8	10	10
SALEM	0	9	8	4	8	3	1	0
SOMERSET	16	17	10	22	13	25	3	3
SUSSEX	0	0	0	2	0	0	0	0
UNION	27	74	0	11	17	1	4	1
WARREN	0	9	0	8	3	0	0	4
STATE TOTAL	304	1,210	326	534	660	505	136	209

Data is derived from NJ Division of Family Development's FAMIS Reports RM064-01 & RM703-51, AdHoc Reports 5549 & 5598 and SDW Report WR00022WZ_CC

**DIVISION OF FAMILY DEVELOPMENT CURRENT PROGRAM STATISTICS
OCTOBER 2022**

ACRONYMS

EMERGENCY ASSISTANCE (EA) - Payments to those eligible for WFNJ/TANF or WFNJ/GA, authorized during the 30 consecutive days immediately following the emergency (defined as a substantial loss of shelter, food, clothing, or household furnishings by fire, flood or other similar disaster) or if eligible individual or family is in an imminent or actual state of homelessness.

NJ SNAP - Formerly the Food Stamp Program, now known as NJ SNAP (NJ Supplemental Nutrition Assistance Program) authorized by Congress as a nutritional supplement program to provide low income households with more food of greater variety and better nutrition. Program eligibility is based on household income, resources, and expenses for medical, shelter, and dependent care. CWA staff refers certain recipients to the New Jersey Department of Labor for participation in the Food Stamp Employment and Training Program.

FAMIS: Family Assistance Management Information System

GAAS: General Assistance Automated System

NJKIDS: New Jersey Kids Deserve Support (Child Support Information Management System)

NJ MMIS SHARED DATA WAREHOUSE: The Shared Data Warehouse (SDW) is the repository for New Jersey's DFD and Medicaid data. Since 2003, OptumInsight has administered the SDW and provided access to the data through a reporting tool known as Business Objects.

OMEGA: Online Management of Economic Goal Achievement

SSI-EA: Supplemental Security Income-Emergency Assistance

WFNJ: Work First New Jersey - Fully implemented July 1, 1997, this is New Jersey's welfare reform program which responds to the requirements of the Federal Personal Responsibility and Work Opportunity Reconciliation Act (**PRWORA**) of 1996. PRWORA established Temporary Assistance for Needy Families (**TANF**) as the replacement for AFDC cash assistance. WFNJ includes two segments, **WFNJ/TANF** for families with children, and **WFNJ/GA** (General Assistance) for single adults and couples without dependent children. WFNJ emphasizes achieving self-sufficiency and limits lifetime receipt of financial assistance to a total of five years.

**DIVISION OF FAMILY DEVELOPMENT CURRENT PROGRAM STATISTICS
OCTOBER 2022**

EXPLANATORY NOTES

The Department of Human Services Division of Family Development provides basic income and an opportunity to achieve self-sufficiency for individuals and families served by the Division's programs. The Division provides leadership, direction and supervision to those public agencies responsible for administering those programs and plans for and develops policies to promote self-sufficiency.

WFNJ STATISTICAL SUMMARY (TABLE 17)

Employment Directed Activities (EDA) - From Activities Summary Report (OMEGA report # RM064). Unduplicated count of persons participating in Community Work Experience Program (CWEP), All Other Training, or Job Search.

Number of Persons Employed This Month, Still Receiving TANF - Individuals with open "empl" activity on OMEGA. Ad hoc report.

Participants Receiving Child Care Services - From Issuance Disbursement Summary (OMEGA report # RM703). Total number of active participants who show receipt of Child Care.

Number of Persons Closed on FAMIS Due to Employment - From FAMIS report #5549-RM-2

Post TANF and Receiving Child Care - Persons no longer in receipt of TANF but still receiving child care. From Share Data Warehouse Child Care case count based on Child Care payments (SDW report WR00022WZ_CC).