

January 2009



New Jersey

ECONOMIC INDICATORS

Jon S. Corzine
Governor

NEW JERSEY DEPARTMENT OF

LWD

LABOR AND WORKFORCE DEVELOPMENT
nj.gov/labor

David J. Socolow
Commissioner

NEW JERSEY ECONOMIC INDICATORS

No. 510 Based on data through January 27, 2009

This Month's Feature Article

2008 State Population Estimates	1
---------------------------------------	---

The Economy

New Jersey's Economy by the Numbers	3
The Economic Situation	4
Comparison of Economic Trends in New Jersey and the US	8

Labor Area Focus

Regional Analysts' Corner	11
Nonfarm Payroll Employment in New Jersey Labor Areas	12
Civilian Labor Force Data for New Jersey Labor Areas	13

Statistical Section

Indicator Series, 1 to 30, Historical Tables and Charts	S-2 — S-21
Indicator Series, 1 to 30, Annual Averages	S-22
Nonfarm Payroll Employment in New Jersey (seasonally adjusted)	S-23
Nonfarm Payroll Employment in New Jersey (not seasonally adjusted)	S-24
Hours and Earnings of Production/Nonsupervisory Workers	S-28
Comparative US and NJ Civilian Labor Force Trends	S-29
Characteristics of New Jersey's Insured Unemployed	S-30
Sources and Notes	S-31

New Jersey Economic Indicators (ISSN 1064-5942) is published monthly except February (due to annual revisions). The report is prepared with the cooperation of other state and federal agencies, and it is distributed without charge by the New Jersey Department of Labor and Workforce Development, Division of Labor Market and Demographic Research. For copies or information, please contact JoAnne Caramelo at the New Jersey Department of Labor and Workforce Development, PO Box 057, Trenton, NJ 08625-0057, phone: (609) 292-2582 or e-mail: joanne.caramelo@dol.state.nj.us.

RESTRICTIONS: Mc-Graw Hill monthly construction contract data (Series 19-21) are published by special contract. RE-PRINTING AND ELECTRONIC DISSEMINATION OF THESE DATA ARE PROHIBITED BY LAW. All other material may be reprinted without permission; however, it would be appreciated if appropriate credit were given.

ON THE INTERNET: Current and recent back issues are available via the *Labor Planning and Analysis* Web site (www.nj.gov/labor/lra)

January Feature Article

2008 State Population Estimates

by Sen-Yuan Wu, Division of Labor Market and Demographic Research

According to the latest population estimates, New Jersey had 8,682,661 residents as of July 1, 2008, a net gain of 29,535 residents from a year ago. The 0.34 percent growth rate between 2007 and 2008 was slower than 39 other states in the nation. Total population increased by 0.92 percent nationally between 2007 and 2008.

Parallel to the population trend in the Northeast region (includes 6 New England and 3 Middle Atlantic states), New Jersey has gained population at an increasing rate since 2006, a turnaround from its declining growth rate between 2000 and 2006. Population growth in New Jersey decelerated gradually from 0.7 percent per annum in the 2000-2001 period to 0.1 percent per annum in the 2005-2006 period. The deceleration of growth resulted mainly from the state's estimated net losses in migration. Although New Jersey has the nation's third highest percentage of foreign born population, after 2003, the state's net gains in international immigration were no longer large enough to offset its net losses due to domestic migration. However, the state's flow of domestic out-migrants has subdued after reaching a peak in 2006 and its population growth rate has accelerated somewhat to 0.15 percent and 0.34 percent per annum during the 2006-2007 and 2007-2008 years.

New Jersey was the nation's eleventh most populous state in 2008, unchanged from its 2007 status. New Jersey's population ranked ninth nationally in 2000. Its rank descended to the tenth and eleventh in 2002 and 2005, respectively.

New Jersey's distinctive status as the nation's most densely populated state (with 1,171 persons per square mile in 2008) remains unchallenged. Rhode Island (population density: 1,006 persons per square mile) was the only other state with more than 1,000 persons per square mile as of 2008. The nation's 2008 population density was 86.0 persons per square mile. Alaska's 1.2 persons per square mile made it the most sparsely populated state in the nation.

The Western and Southern states have continued to dominate the nation's population growth. The ten fastest growing states during the 2007-2008 period were Utah (2.5%), Arizona (2.3%), Texas (2.0%), North Carolina (2.0%), Colorado (2.0%), Idaho (1.8%), Wyoming (1.8%), Nevada (1.8%), Georgia (1.7%), and South Carolina (1.7%). Only two states -- Michigan (-0.5%) and Rhode Island (-0.2%) -- experienced population declines between 2007 and 2008 due, at least partly, to their severe economic downturn.

Table 1

New Jersey Population: 1980 to 2008		
Year	Resident Population	Annualized Growth Rate
<u>Census on April 1,</u>		
1980	7,365,011	
1990	7,730,188	0.49%
2000	8,414,360	0.85%
<u>Estimates as of July 1,</u>		
2000	8,430,913	
2001	8,490,942	0.71%
2002	8,547,410	0.67%
2003	8,589,562	0.49%
2004	8,620,770	0.36%
2005	8,634,657	0.16%
2006	8,640,218	0.06%
2007	8,653,126	0.15%
2008	8,682,661	0.34%
<i>Source: US Bureau of the Census, Population Division, 12/22/08</i>		

Population grew slowly in the state's Middle Atlantic neighbors. New York ranked 42nd nationally with a 0.31% rate of growth (or 60,981 residents) between 2007 and 2008, while Pennsylvania's 0.23% growth rate (or 28,349 residents) ranked 46th among the 50 states. In comparison, New Jersey's 0.34% growth rate ranked 40th in the nation. Numerically, its 29,535 net gain of population was the 25th largest among the 50 states.

Paralleling a national trend, New Jersey's 3.2 percent post-2000 Census growth rate (or 0.38% per annum, on average) was slower than its rate of growth during the 1990s (0.85% per annum). The nation's total population increased by 13.2 percent (1.24% per annum) during the 1990s and 8.0 percent from 2000 to 2008 (0.94% per annum).

New Jersey's net gain from international migration (384,700), thus far this decade, was the sixth largest in the nation. However, the state also lost 438,600 residents to other states due to domestic migration during this eight-year period. Natural increment (344,000 more births over deaths) was another major source of the state's population growth from 2000 to 2008.

Table 2

Components of Population Change: New Jersey, 2000 to 2008					
Time period	Total Change	Births	Deaths	Net Migration	
				International	Domestic
4/1/00 to 7/1/00	16,553	27,278	16,790	14,514	-8,367
7/1/00 to 7/1/01	60,029	112,168	72,782	55,813	-32,148
7/1/01 to 7/1/02	56,468	112,854	74,829	52,214	-31,049
7/1/02 to 7/1/03	42,152	115,968	73,374	45,346	-42,275
7/1/03 to 7/1/04	31,208	116,466	73,662	42,799	-51,221
7/1/04 to 7/1/05	13,887	112,044	72,187	44,393	-67,340
7/1/05 to 7/1/06	5,561	109,251	69,588	46,205	-77,639
7/1/06 to 7/1/07	12,908	112,351	67,475	41,607	-72,370
7/1/07 to 7/1/08	29,535	114,805	68,533	41,796	-56,208
4/1/00 to 7/1/08	268,301	933,185	589,220	384,687	-438,617

Note: A minor difference exists between total change and the sum of individual components, which results from the application of a national population control to state estimates.

Source: US Bureau of the Census, Population Division, 12/22/08

Table 3

Population Change: Mid-Atlantic States, 2000 to 2008				
State	Total Change		Components of Change	
	Number	Percent	Natural Increment	Net Migration
<u>7/1/07 to 7/1/08</u>				
New Jersey	29,535	0.34	46,272	-14,412
New York	60,981	0.31	98,100	-31,412
Pennsylvania	28,349	0.23	22,109	3,554
<u>4/1/00 to 7/1/08</u>				
New Jersey	268,301	3.19	343,965	-53,930
New York	513,481	2.71	803,680	-698,895
Pennsylvania	167,227	1.36	143,390	77,383

Source: US Bureau of the Census, Population Division, 12/22/08

Data Availability

The annual series of state population estimates are available on the Labor Market Information Web site <http://lwd.dol.state.nj.us/labor/lpa/LMI_index.html>. For more information about population estimates for New Jersey, contact the New Jersey Department of Labor & Workforce Development, Division of Labor Market and Demographic Research, PO Box 388, Trenton, NJ 08625-0388. Telephone: (609) 292-0076 or e-mail: Sen-Yuan.Wu@dol.state.nj.us.

Comparative Economic Indicators: New Jersey and United States

New Jersey Data (Seasonally adjusted)			Latest Data	Data Series	Page Number	Year-to-Date % change from year ago (Unadjusted)	
Latest Month	Month Ago	Year Ago				NJ	US
\$442,150	\$440,552	\$428,439	3rd Quarter 08	Personal Income (millions)*	----	3.6	4.3
27,859	33,942	45,582	Nov	New Vehicle Registrations***	S-18	-11.6	-16.3
826	1,280	2,133	Nov	Dwelling Units Authorized**	S-16	-26.8	-35.0
4,019.6	4,034.8	4,082.6	Dec	Nonfarm Payroll Employment (000)	S-6	-0.3	-0.3
293.8	295.7	309.9	Dec	Manufacturing (000)	S-8	-3.3	-3.1
2,917.7	2,927.3	2,945.3	Dec	Private Service-providing (000)	----	0.1	0.2
324.9	275.7	188.0	Dec	Total Unemployment (000)	S-2	31.7	26.1
7.1	6.1	4.2	Dec	Total Unemployment Rate (%)	S-4	----	----
168.9	160.9	114.7	Dec	Insured Unemployment Volume (000)	S-20	17.5	N/A
4.3	4.1	2.9	Dec	Insured Unemployment Rate (%)	S-20	----	----
41.3	41.4	42.2	Dec	Average Factory Workweek (hours)**	S-28	1.3	-1.0
\$18.19	\$18.12	\$17.64	Dec	Average Factory Hourly Earnings**	S-28	3.9	2.8
\$751.25	\$750.17	\$744.41	Dec	Average Factory Weekly Earnings**	S-28	5.3	1.7

Notes: See pages S-35 to S-38 for notes on indicators' series. (Nonbuilding construction contracts are not published; private service-providing data are found in 13-month tables on page S-23.)

1 Monthly revisions to unadjusted data published by special contract with McGraw-Hill Construction. Reprinting and electronic dissemination are prohibited by law.

** Latest Month - 3rd Qtr. 2008; Month Ago - 2nd Qtr. 2008; Year Ago - 3rd Qtr. 2007 (annualized data)*

*** Not seasonally adjusted.*

**** Includes only total new cars and new light trucks/vans (weight class 0-10,000 lbs.) registered in NJ.*

Economic Situation: The Nation

As 2008 came to a close, the recession in the national economy deepened, dimming prospects for a recovery during early 2009. Employment declined for the twelfth consecutive month with job losses during the year totaling 2.6 million. Reflecting the weakening economic situation, consumer confidence fell to an all-time low. Accompanied by lower

prices for many consumer goods, particularly gasoline, consumer spending continued to trend down and retail sales declined for the sixth consecutive month. The troubled housing market showed no signs of improvement as sales and construction remained at historically low levels.

Nonfarm employment fell by 524,000 in December following a decrease of 584,000 in November. Since the beginning of the recession in December 2007, employment has declined by 2.6 million (-1.9%), with nearly three-fourths of the job losses, or 1.9 million, occurring during the past four months. The unemployment rate increased from 6.8 percent in November to 7.2 percent in December, the highest rate since January 1993.

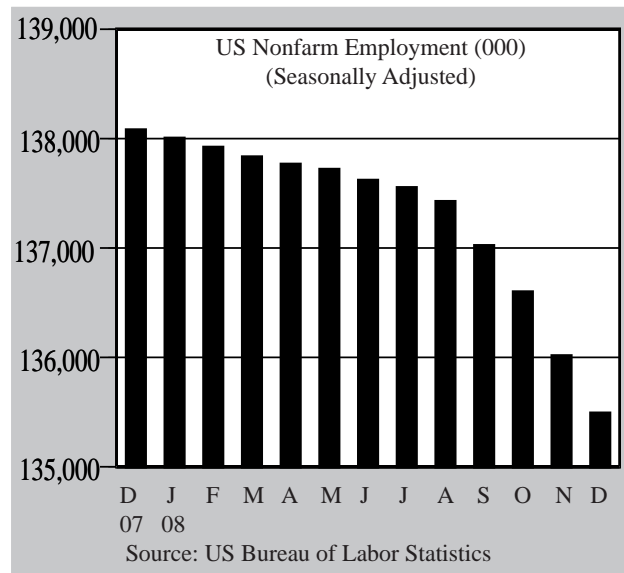


Employment in manufacturing fell by 149,000 in December 2008 and has declined by 791,000 since the start of the recession in December 2007. The largest monthly job losses occurred in fabricated metal products (-28,000) and motor vehicles and parts (-21,000). Compared with December 2007, employment in motor vehicles and parts has fallen by about 17 percent (-162,000).

Construction employment dropped by 101,000 during December and has fallen by 899,000 since peaking in September 2006. Professional and business services lost 113,000 jobs in December, with employment in temporary help agencies down by 81,000. Employment in retail and wholesale trade contracted over the month by 67,000 and 30,000, respectively.

Health care was the only major private industry sector that continued to experience significant job gains with employment up by 32,000 over the month and by 372,000 compared with a year ago.

Feeling the effects of ongoing weakness in the labor market, the Consumer Confidence Index fell to an all-time low of 38.0, down from 44.7 in November. Consumers' appraisal of current economic conditions dropped substantially (-30.5%), while their expectations for the next six months worsened by a somewhat smaller margin (-5.2%). Compared with a year ago, the index was down by 58.1 percent.



Economic Situation: The Nation

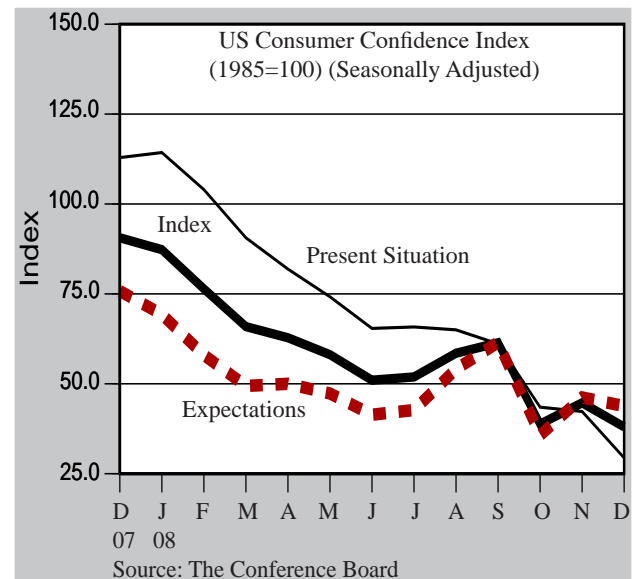
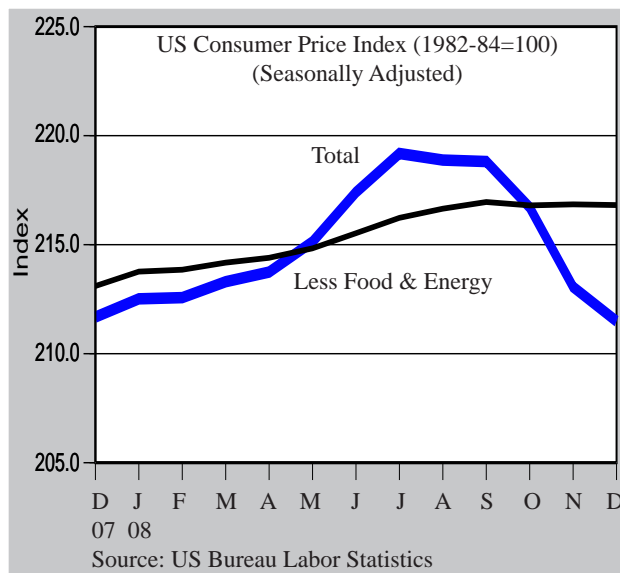
The erosion of consumer confidence was reflected in further declines in consumer spending. Personal consumption expenditures declined for the fifth consecutive month in November 2008, falling by 0.6 percent, following a decrease of 1.0 percent in October 2008. Consumer spending accounts for about two-thirds of all economic activity, with ongoing weakness in this sector suggesting a continued downturn in the national economy.

As consumers cut back on their purchases, retail sales fell for the sixth consecutive month in December, dropping by 2.7 percent. Monthly declines were widespread with retail sales excluding autos down a record 3.1 percent. Compared with a year ago, retail sales were down by 9.8 percent. The largest over-the-year declines were recorded by auto dealers (-24.6%) and gasoline stations (-35.5%).

Declining energy prices, particularly for gasoline, drove consumer prices down for the third consecutive month in December. The Consumer Price Index fell by 0.7 percent, following declines of 1.0 and 1.7 percent in October and November, respectively. The energy index fell by 8.3 percent in December and was down by 21.3 percent for the 12 months ending in December. The overall price index rose by just 0.1 percent for all of 2008, the smallest calendar year increase since a price decline of 0.7 percent in 1954

Wholesale inflation fell for the fifth consecutive month in December (-1.9%) primarily due to falling energy costs (-9.3%). Producer prices were down by 0.9 percent for all of 2008, compared with an increase of 6.2 percent in 2007.

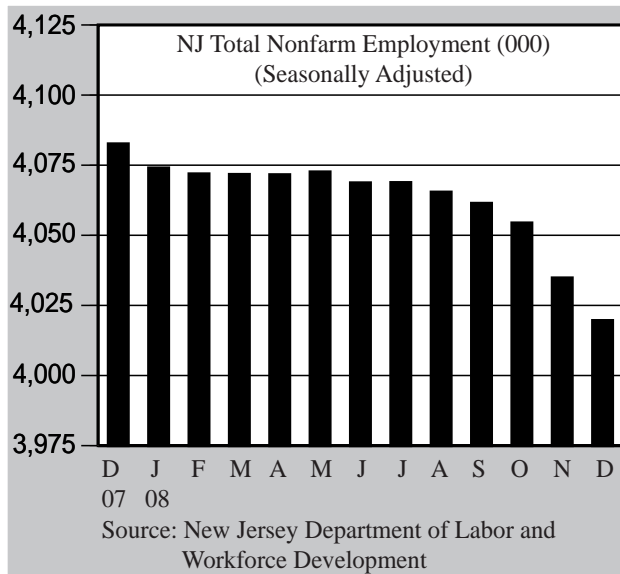
Industrial production decreased by 2.0 percent in December, after a decline of 1.3 percent in November. Compared with December 2007, total industrial output was down by 7.8 percent, with production down in the fourth quarter at an annual rate of 11.5 percent. Manufacturing output declined by 2.3 percent over the month and by 9.9 percent over the year.



The downturn in the housing market continued as housing starts fell for the sixth consecutive month to a seasonally adjusted rate of 550,000 units, the lowest on record. Building permits, which are an indicator of future construction activity, also fell to a historic low of 549,000 units, less than half the level recorded in December 2007. Sales of new and existing homes in November were down by 35.3 and 10.6 percent, respectively, compared with the levels of a year ago. The number of new and existing homes on the market represented supplies of more than 11 months for each group at current sales rates.

Economic Situation: The State

As the recession in the national economy deepened at the end of 2008, New Jersey felt the impact with a steep increase in the unemployment rate and widespread employment losses. Construction and planned homebuilding continued to trend down providing little optimism in the troubled housing market. Weakening economic conditions eroded consumer confidence in the Middle Atlantic region during the past year with December's index down more than 50 percent from the level of a year ago.



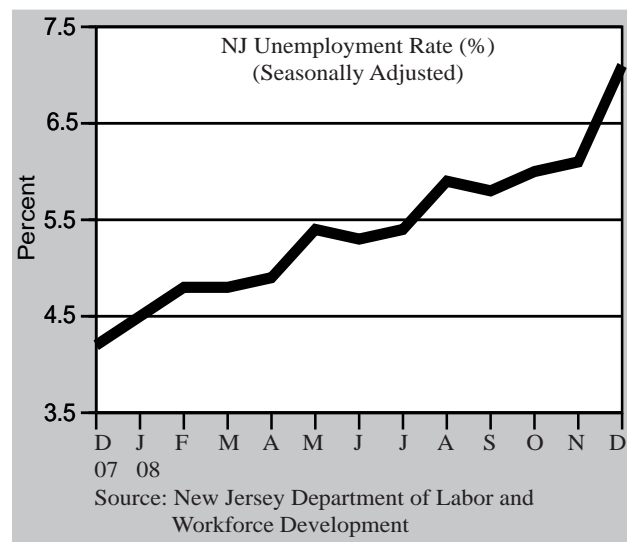
Employment fell by 15,200 in December, following a revised loss of 19,600 jobs in November. Compared with a year ago, payrolls were down by 63,000, a decline of 1.5 percent. More than half of the annual employment decline occurred during the last two months (-34,800) (see note below).

Important Note: The United States Bureau of Labor Statistics (BLS) has mandated new procedures for determining monthly state employment estimates for all states, including New Jersey. These new procedures are designed to bring the aggregate employment

change for all states into closer alignment with the change in national employment reflected in the estimates produced and published by the Bureau of Labor Statistics. Beginning with the final November estimates, BLS is requiring that states strictly adhere to a sample-based estimate. This procedure differs from BLS' prior accepted practice in which state analysts combined local knowledge of economic activity with sample-based estimates. As a result of the changes made, at this point in time the November and December 2008 estimates are not totally comparable to previous months' data. Since these estimates are based on recent survey data, the degree to which these new methods better reflect actual economic events will not be known until the monthly estimates are compared to the universe data reported with employers' quarterly Unemployment insurance tax returns in the annual benchmarking process that will be conducted in early 2010.

During December, employment losses were widespread with only two sectors recording job gains, leisure and hospitality (+1,300) and other services (+900). The largest monthly employment decline occurred in professional and business services which lost 5,000 jobs. Other supersectors with substantial job losses included trade, transportation and utilities (-4,500), construction (-3,000), manufacturing (-1,900) and education and health services (-1,900).

New Jersey's unemployment rate increased from 6.1 percent in November to 7.1 percent in December, up from 4.2 percent a year ago and the highest the rate has been in



Economic Situation: The State

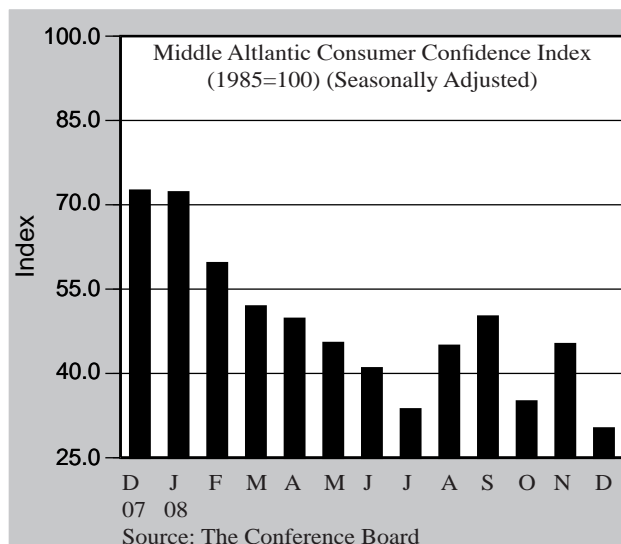
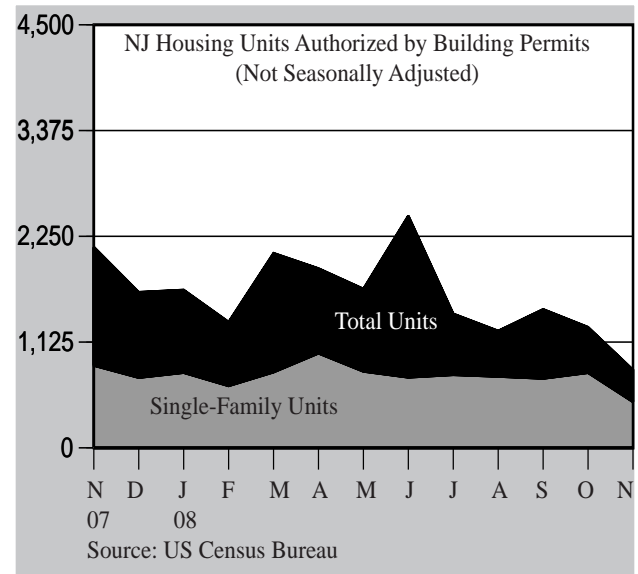
nearly 15 years (March 1994). The monthly surge in the jobless rate was accompanied by a sharp increase in the number of unemployed persons (+49,200) while the labor force participation rate rose over the month from 66.3 percent in November to 66.8 percent in December.

The insured unemployment rate (IUR), which is based only on employment covered by unemployment insurance, climbed to 4.3 percent in December from 4.1 percent in November and was up from the rate a year ago of 2.9 percent. The IUR had not reached 4.3 percent since March 1983. Other measures of unemployment also reflected rising claims volume from January through December 2008, with the weekly average of initial claims and the number of claimants exhausting benefits up by 13.1 and 16.5 percent, respectively, compared with 2007.

According to McGraw-Hill Construction, construction contracts in New Jersey declined in 2008 by 11.4 percent compared with calendar year 2007. An annual gain in contracts for nonresidential construction (+14.7%) was outweighed by declines in contracts for residential (-31.0%) and nonbuilding projects, such as roads and bridges (-24.0%).

Year-to-date planned homebuilding in New Jersey from January through November declined by 26.8 percent, reflecting a sharp drop in building permits for single-family homes (-31.6%). In the Northeast region, building permits for all of 2008 were down by 54.5 percent compared with 2007.

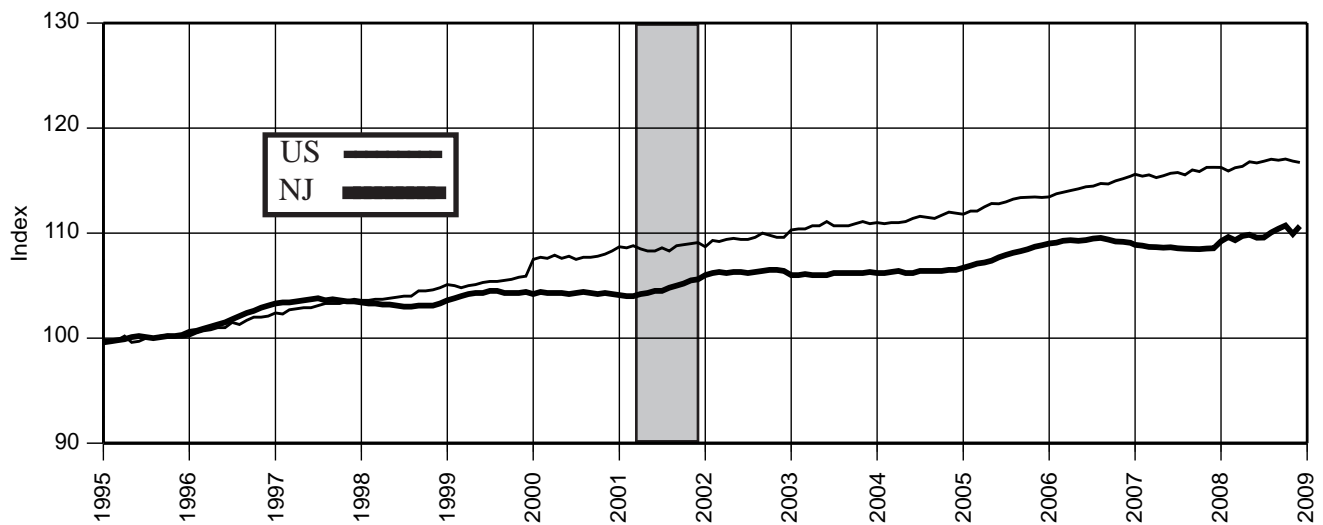
Weakness in the labor, housing and credit markets was felt by consumers in the Middle Atlantic region who expressed less confidence in December (-58.3%) compared with a year ago. Consumers' appraisal of current economic conditions declined by 72.7 percent over the year, while their expectations for the next six months fell by 42.1 percent.



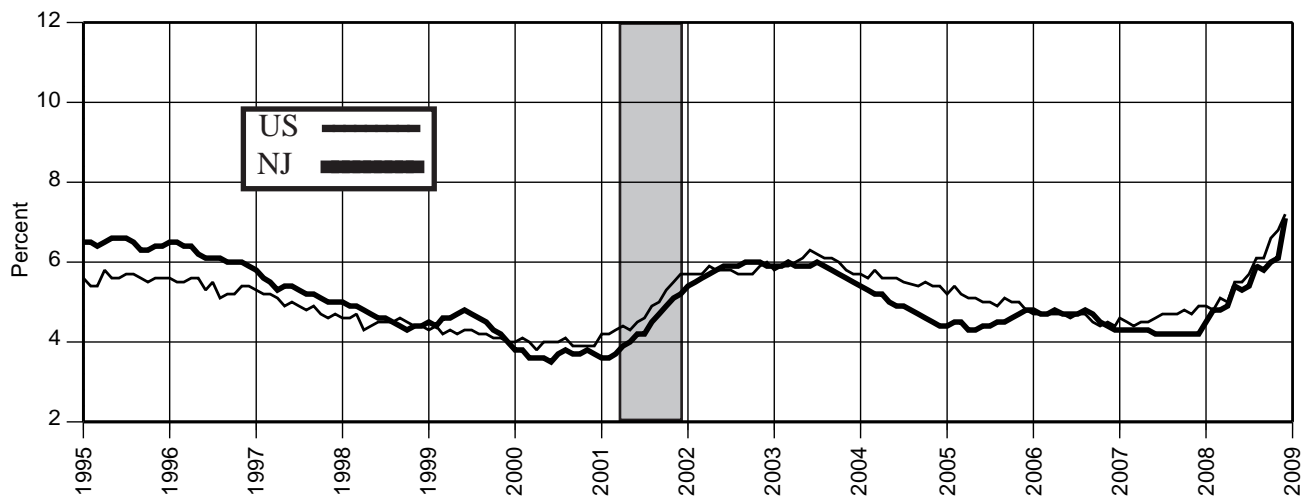
There has been some positive economic news for consumers in recent months in the form of falling prices. During the two-month period from October to December, the Consumer Price Index for the area covering northern New Jersey and New York fell 2.3 percent, while prices in the southern New Jersey and Philadelphia area declined 3.1 percent. The U.S. city average fell by 2.9 percent on an unadjusted basis over the same period.

Vehicle registrations through November were down by 11.6 percent due to a decline in demand for light trucks and vans (-18.8%) which offset a year-to-date increase in the sales of passenger cars (+5.2%).

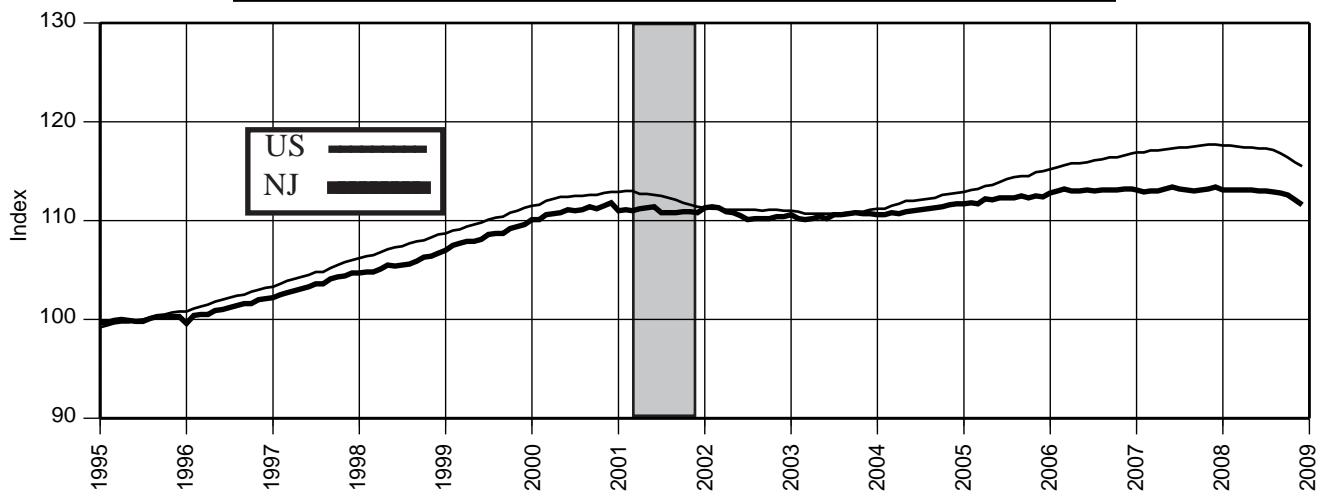
Civilian Labor Force (1995=100)



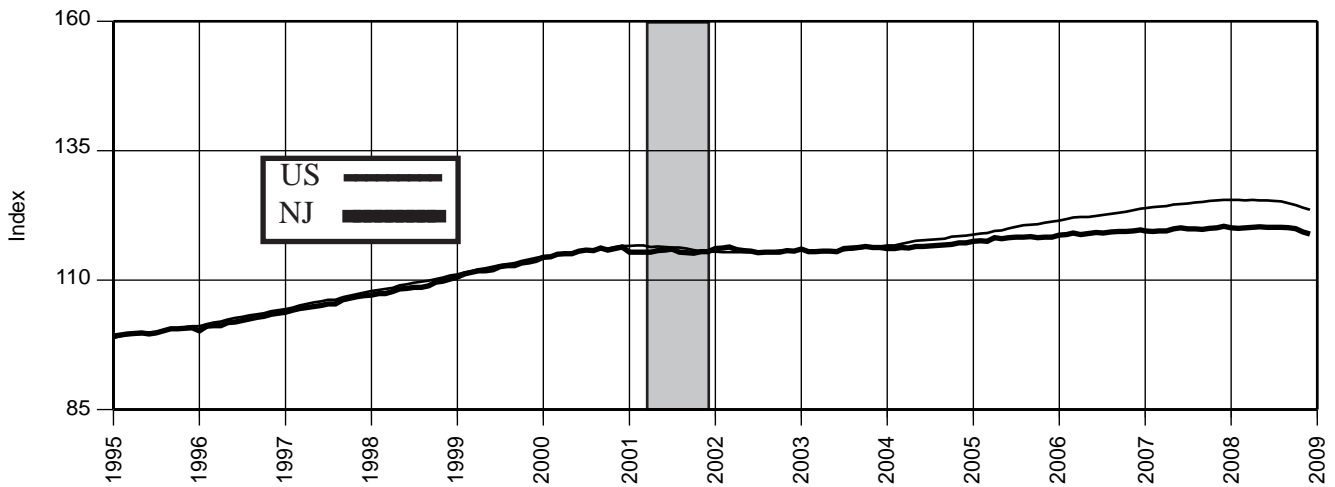
Unemployment Rate (%)



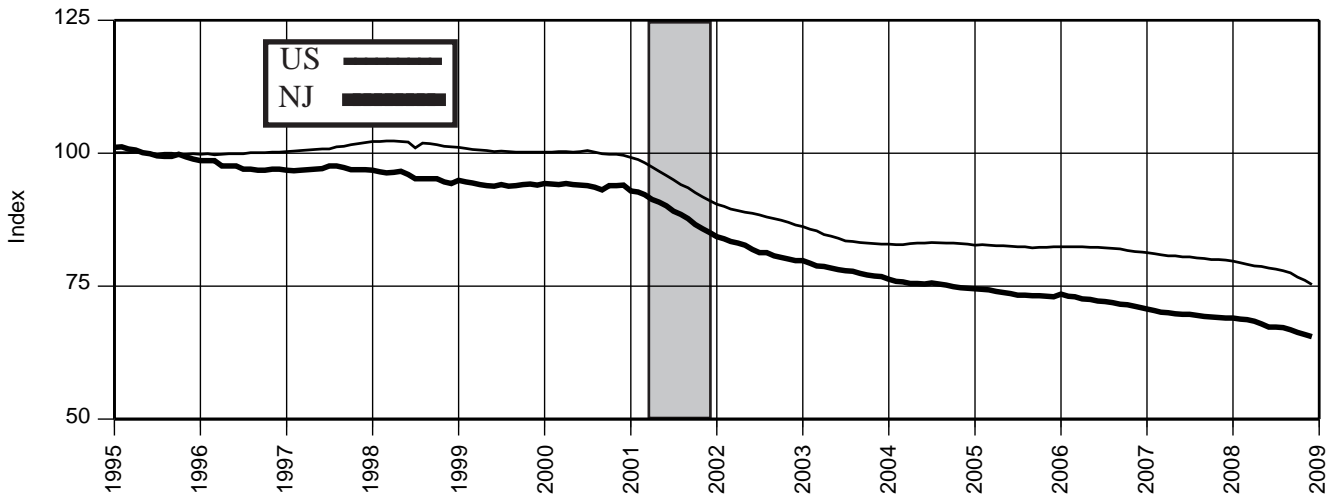
Nonfarm Payroll Employment (1995=100)



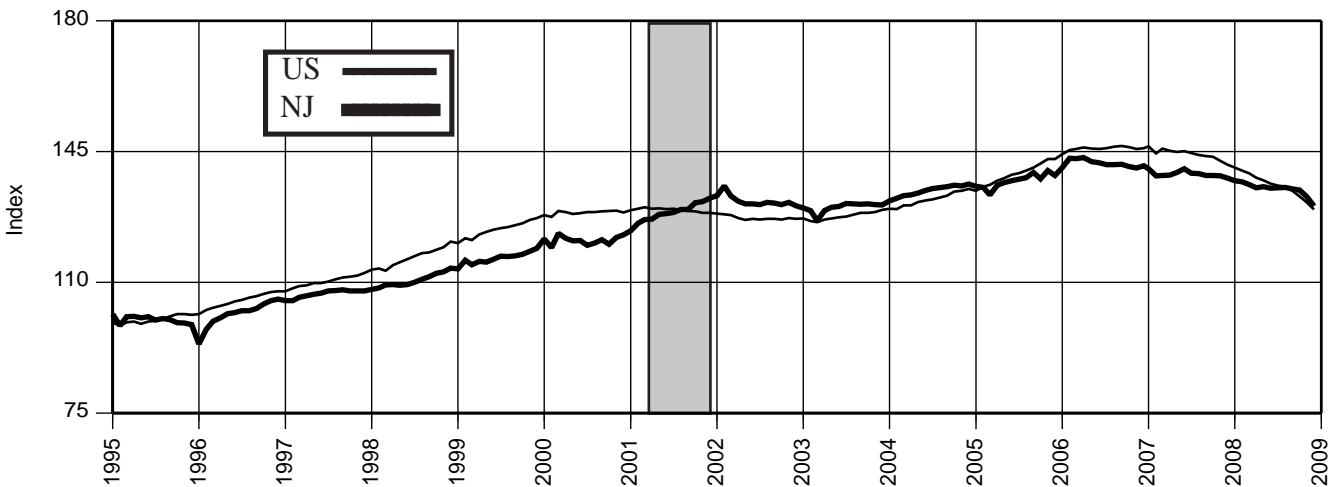
Private Service Providing Employment (1995=100)



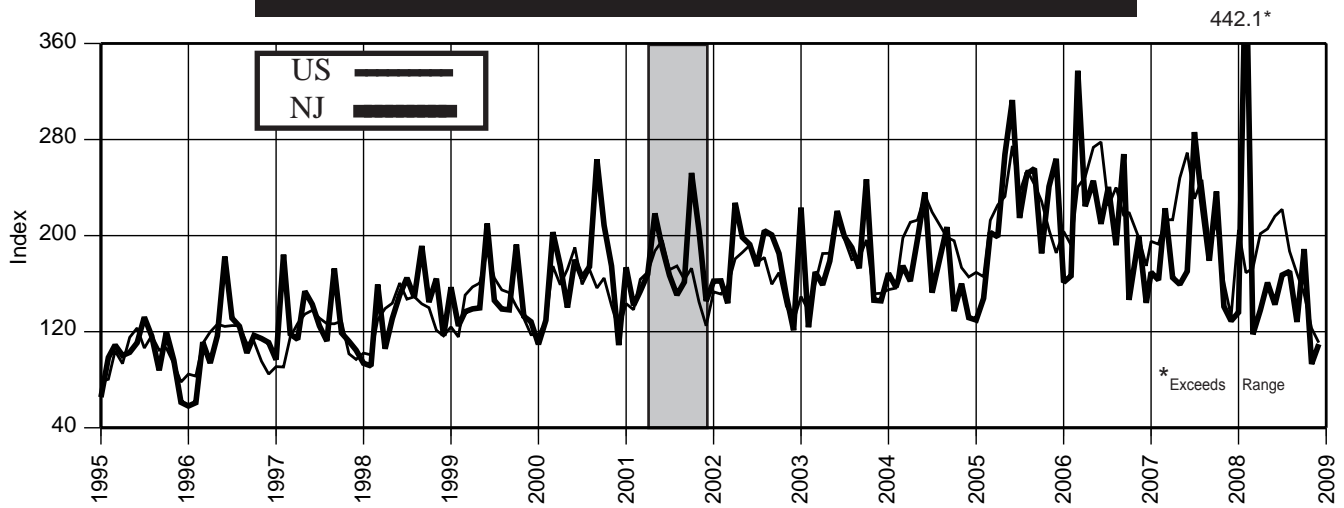
Manufacturing Employment (1995=100)



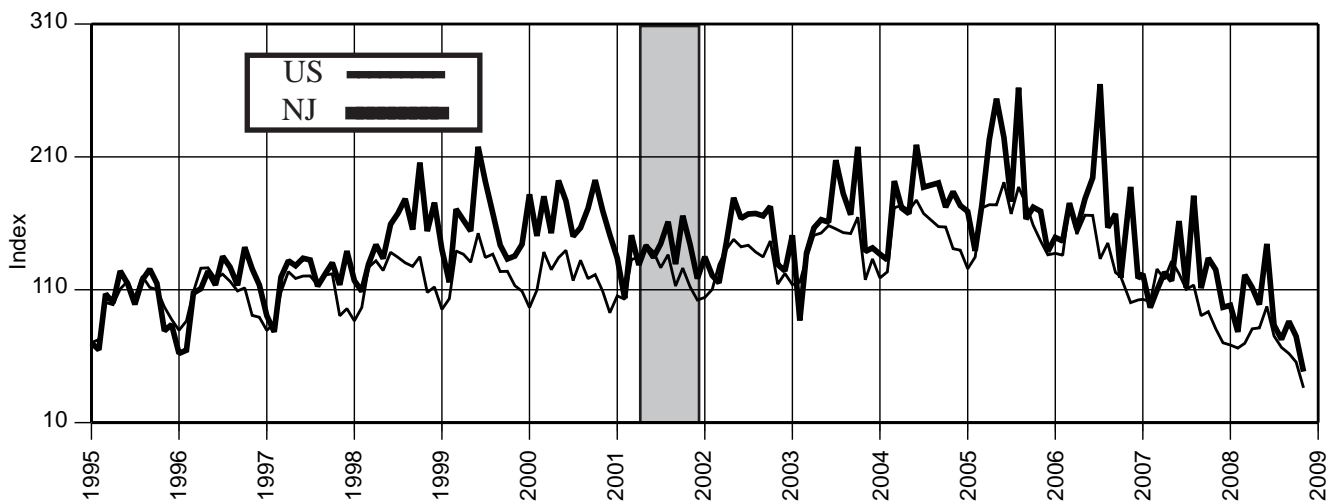
Construction Employment (1995=100)



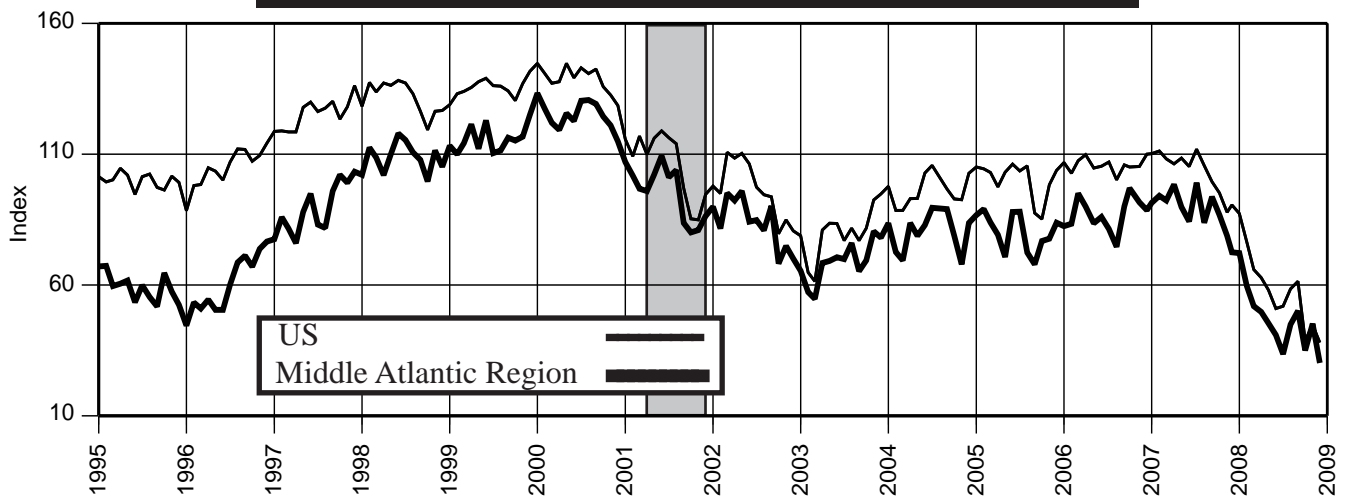
Total Construction Contracts Awarded (1995=100)-Unadj.



Dwelling Units Authorized (1995=100)-Unadj.



Consumer Confidence Index (1985=100)-Unadj.



Northern Region

In December 2008, online and on-demand printing provider Mimeo.com opened a data center and web-enabled print production and distribution facility in Newark (Essex County). The current staff includes 31 members, a number that is expected to more than triple in the next 18 months. In Clifton, three data services companies plan to move into a seven-story office building: New York-based Telx. Automated Logic, a specialist in green energy technology, this development will bring about 280 jobs to the township.

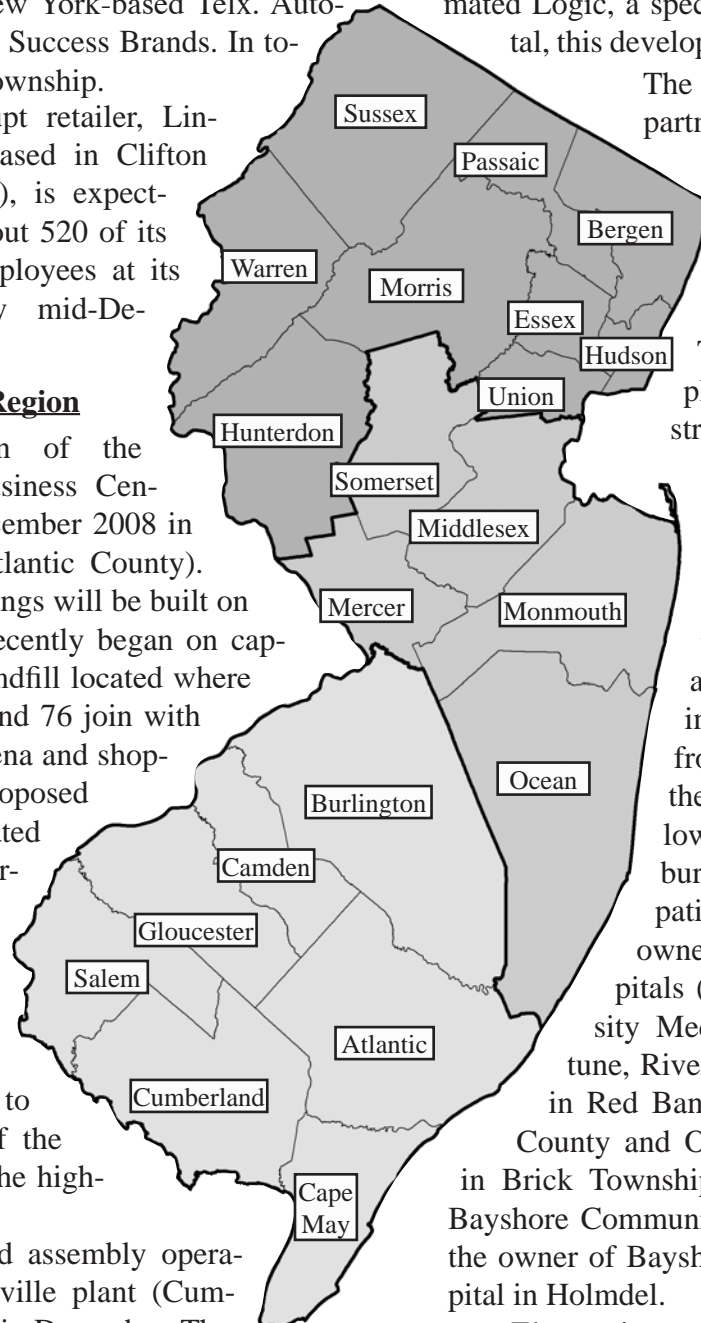
The bankrupt retailer, Lincens-N-Things, based in Clifton (Passaic County), is expected to lay off about 520 of its roughly 600 employees at its headquarters by mid-December 2008.

The city of Newark has partnered with the Mid-Atlantic investment Alliance to build five new homes on vacant lots in the city's West Ward. The project will employ roughly ten construction workers.

Southern Region

Construction of the Pleasantville Business Center began in December 2008 in Pleasantville (Atlantic County). Up to nine buildings will be built on the site. Work recently began on capping a former landfill located where Interstates 295 and 76 join with Route 42. An arena and shopping center are proposed for the site, located across the border of Camden and Gloucester counties. The state Department of Transportation plans to use a portion of the site to upgrade the highway intersection.

TFAL ended assembly operations at its Millville plant (Cumberland County) in December. The cookware and small appliance firm is converting the facility to its national distribution and data processing center. An additional 20 workers were hired for warehouse and computer work.



Central Region

Meridian Health and Bayshore Community Health Services are considering a merger. The hospital industry is suffering from the downturn in the economy as well as lower government reimbursement for uninsured patients. Meridian is the owner of three local hospitals (Jersey Shore University Medical Center in Neptune, Riverview Medical Center in Red Bank both in Monmouth County and Ocean Medical Center in Brick Township in Ocean County). Bayshore Community Health Services is the owner of Bayshore Community Hospital in Holmdel.

Electronics retailer Circuit City filed for bankruptcy at the end of 2008 and is closing all of its stores nationwide. The closing of the Mercer County location will idle an estimated 70 jobs. Across the state the chain has 22 locations.

Labor Area Focus (cont.)**Labor Area Nonfarm Payroll Employment**

(not seasonally adjusted)

	2007	2008											
	Dec	Jan	Feb	Mar	Apr	May	Jun	Jul	Aug	Sep	Oct	Nov	Dec
Atlantic City Labor Area (Atlantic County)													
Total Nonfarm	149.6	145.8	145.7	146.8	147.8	150.1	152.7	154.5	153.9	151.9	148.9	147.9	145.3
Total Private Sector	126.7	123.6	123.2	124.1	125.1	127.2	130.3	132.4	131.7	129.2	125.9	124.9	122.9
Government	22.9	22.2	22.5	22.7	22.7	22.9	22.4	22.1	22.2	22.7	23.0	23.0	22.4
Bergen-Passaic Labor Area (Bergen & Passaic counties)													
Total Nonfarm	672.2	650.8	650.8	654.0	658.7	662.3	666.1	657.1	654.1	660.5	663.2	659.5	658.7
Total Private Sector	589.0	569.8	568.3	571.1	575.2	579.3	582.6	578.0	577.6	580.1	580.0	575.3	574.6
Government	83.2	81.0	82.5	82.9	83.5	83.0	83.5	79.1	76.5	80.4	83.2	84.2	84.1
Camden Labor Area (Burlington, Camden & Gloucester counties)													
Total Nonfarm	550.1	535.9	535.6	540.1	543.0	545.7	550.0	541.2	538.9	540.5	543.9	541.3	543.0
Total Private Sector	459.8	447.0	444.9	448.8	451.6	455.3	459.3	457.1	455.7	452.7	452.0	449.3	450.6
Government	90.3	88.9	90.7	91.3	91.4	90.4	90.7	84.1	83.2	87.8	91.9	92.0	92.4
Edison Labor Area (Middlesex, Monmouth, Ocean & Somerset counties)													
Total Nonfarm	1,049.0	1,015.7	1,014.4	1,025.0	1,034.8	1,045.2	1,060.6	1,052.4	1,047.9	1,040.5	1,040.9	1,038.2	1,030.4
Total Private Sector	896.2	865.7	861.2	870.0	880.6	891.4	907.1	908.1	906.3	894.4	888.3	884.5	877.7
Government	152.8	150.0	153.2	155.0	154.2	153.8	153.5	144.3	141.6	146.1	152.6	153.7	152.7
Jersey City Labor Area (Hudson County)													
Total Nonfarm	252.3	246.6	247.0	248.0	247.3	248.4	248.4	244.3	243.6	248.6	249.7	247.7	247.5
Total Private Sector	210.2	205.0	204.8	205.7	205.7	206.5	207.1	204.7	205.3	208.4	207.9	205.7	205.2
Government	42.1	41.6	42.2	42.3	41.6	41.9	41.3	39.6	38.3	40.2	41.8	42.0	42.3
Newark Labor Area (Essex, Hunterdon, Morris, Sussex & Union counties)													
Total Nonfarm	1,048.9	1,023.3	1,021.1	1,025.6	1,032.4	1,039.6	1,047.4	1,036.7	1,031.0	1,033.5	1,038.8	1,041.2	1,042.5
Total Private Sector	880.4	857.5	853.8	858.3	864.1	871.6	879.2	873.6	870.8	869.8	871.4	872.1	874.1
Government	168.5	165.8	167.3	167.3	168.3	168.0	168.2	163.1	160.2	163.7	167.4	169.1	168.4
Ocean City Labor Area (Cape May County)													
Total Nonfarm	38.5	34.9	34.8	35.5	38.2	43.5	52.6	57.3	56.4	48.8	41.2	38.8	38.1
Total Private Sector	29.1	25.6	25.5	26.2	28.9	33.7	42.0	47.3	46.5	38.7	31.7	29.4	28.8
Government	9.4	9.3	9.3	9.3	9.3	9.8	10.6	10.0	9.9	10.1	9.5	9.4	9.3
Salem Labor Area (Salem County)													
Total Nonfarm	23.4	23.4	23.4	23.4	23.9	24.3	24.3	23.7	23.7	24.0	23.9	23.9	24.0
Total Private Sector	18.5	18.5	18.5	18.5	19.0	19.3	19.3	19.3	19.2	19.3	19.1	19.0	19.1
Government	4.9	4.9	4.9	4.9	4.9	5.0	5.0	4.4	4.5	4.7	4.8	4.9	4.9
Trenton-Ewing Labor Area (Mercer County)													
Total Nonfarm	240.9	237.5	237.1	238.4	239.4	239.0	239.8	237.4	236.1	236.8	237.8	238.1	237.9
Total Private Sector	173.3	169.7	169.1	170.2	171.3	172.1	172.7	171.9	171.0	170.8	170.7	170.9	170.7
Government	67.6	67.8	68.0	68.2	68.1	66.9	67.1	65.5	65.1	66.0	67.1	67.2	67.2
Vineland-Millville-Bridgeton Labor Area (Cumberland County)													
Total Nonfarm	62.4	60.9	60.9	61.1	61.3	61.9	61.8	59.6	59.4	60.8	61.5	61.4	61.3
Total Private Sector	47.2	46.0	45.7	45.8	46.1	46.6	46.8	46.6	46.4	46.2	46.1	45.9	45.8
Government	15.2	14.9	15.2	15.3	15.2	15.3	15.0	13.0	13.0	14.6	15.4	15.5	15.5
Warren Labor Area (Warren County)													
Total Nonfarm	39.1	38.1	37.9	37.9	38.0	38.6	38.7	38.3	38.9	37.2	38.5	39.1	38.1
Total Private Sector	32.4	31.6	31.3	31.3	31.4	31.8	31.9	31.9	32.6	30.6	31.8	32.4	31.2
Government	6.7	6.5	6.6	6.6	6.6	6.8	6.8	6.4	6.3	6.6	6.7	6.7	6.9

Labor Area Focus (cont.)**Labor Area Civilian Labor Force**

(seasonally adjusted)

	2007		2008										
	Dec	Jan	Feb	Mar	Apr	May	Jun	Jul	Aug	Sep	Oct	Nov	Dec
<u>Atlantic City Labor Area (Atlantic County)</u>													
Labor Force	135.6	136.5	137.8	136.7	136.4	136.9	135.9	136.6	138.1	137.4	138.5	138.1	137.5
Employment	127.7	128.5	129.7	128.4	127.9	127.7	127.1	127.7	127.8	127.1	127.1	126.2	124.3
Unemployment Volume	7.9	8.0	8.1	8.3	8.5	9.2	8.8	8.9	10.3	10.3	11.4	11.9	13.2
Unemployment Rate (%)	5.8	5.9	5.9	6.1	6.2	6.7	6.5	6.5	7.5	7.5	8.2	8.6	9.6
<u>Bergen-Passaic Labor Area (Bergen & Passaic Counties)</u>													
Labor Force	713.1	715.6	718.5	716.4	720.1	721.8	719.7	720.8	724.5	724.4	725.5	717.0	721.3
Employment	682.2	683.1	684.1	682.1	685.5	684.1	683.1	684.0	683.6	684.5	683.3	675.0	672.2
Unemployment Volume	30.9	32.5	34.4	34.3	34.6	37.7	36.6	36.8	40.9	39.9	42.2	42.0	49.1
Unemployment Rate (%)	4.3	4.5	4.8	4.8	4.8	5.2	5.1	5.1	5.6	5.5	5.8	5.9	6.8
<u>Camden Labor Area (Burlington, Camden & Gloucester Counties)</u>													
Labor Force	659.8	663.7	666.4	664.9	665.2	667.7	666.3	667.1	670.5	669.8	672.1	665.5	671.9
Employment	630.2	632.9	633.9	632.2	633.2	631.9	631.3	631.6	631.1	631.3	630.8	624.2	623.9
Unemployment Volume	29.6	30.8	32.5	32.7	32.0	35.8	35.0	35.5	39.4	38.5	41.3	41.3	48.0
Unemployment Rate (%)	4.5	4.6	4.9	4.9	4.8	5.4	5.3	5.3	5.9	5.7	6.1	6.2	7.1
<u>Edison Labor Area (Middlesex, Monmouth, Somerset & Ocean Counties)</u>													
Labor Force	1,192.1	1,196.8	1,201.5	1,199.2	1,204.1	1,206.4	1,204.2	1,205.5	1,209.9	1,211.2	1,213.1	1,203.7	1,209.0
Employment	1,144.1	1,146.8	1,147.2	1,144.8	1,149.4	1,146.3	1,145.2	1,146.0	1,144.2	1,146.5	1,145.5	1,136.8	1,128.6
Unemployment Volume	48.0	50.0	54.3	54.4	54.7	60.1	59.0	59.5	65.7	64.7	67.6	66.9	80.4
Unemployment Rate (%)	4.0	4.2	4.5	4.5	4.5	5.0	4.9	4.9	5.4	5.3	5.6	5.6	6.7
<u>Jersey City Labor Area (Hudson County)</u>													
Labor Force	290.0	292.1	293.2	292.7	293.6	295.2	294.2	294.6	296.5	296.4	297.6	293.7	296.3
Employment	275.0	276.5	276.6	275.8	277.1	276.4	275.9	276.3	275.8	276.4	276.0	272.5	271.1
Unemployment Volume	15.0	15.6	16.6	16.9	16.5	18.8	18.3	18.3	20.7	20.0	21.6	21.2	25.2
Unemployment Rate (%)	5.2	5.3	5.7	5.8	5.6	6.4	6.2	6.2	7.0	6.7	7.3	7.2	8.5
<u>Newark-Union Labor Area (Essex, Hunterdon, Morris, Sussex & Union Counties)</u>													
Labor Force	1,061.2	1,067.0	1,069.6	1,067.0	1,071.2	1,075.3	1,073.1	1,074.1	1,079.3	1,079.6	1,081.9	1,074.3	1,082.8
Employment	1,014.2	1,018.2	1,017.6	1,014.5	1,018.8	1,017.3	1,016.5	1,017.0	1,016.4	1,018.4	1,016.9	1,010.5	1,007.8
Unemployment Volume	47.0	48.8	52.0	52.5	52.4	58.0	56.6	57.1	62.9	61.2	65.0	63.8	75.0
Unemployment Rate (%)	4.4	4.6	4.9	4.9	4.9	5.4	5.3	5.3	5.8	5.7	6.0	5.9	6.9
<u>Ocean City Labor Area (Cape May County)</u>													
Labor Force	56.9	56.9	57.4	57.2	57.1	57.8	58.8	57.9	58.7	58.4	58.9	58.3	58.2
Employment	53.1	53.0	53.5	53.0	52.8	53.3	54.3	53.5	53.5	53.4	53.1	52.9	52.6
Unemployment Volume	3.8	3.9	3.9	4.2	4.3	4.5	4.5	4.4	5.2	5.0	5.8	5.4	5.6
Unemployment Rate (%)	6.7	6.9	6.8	7.3	7.5	7.8	7.7	7.6	8.9	8.6	9.8	9.3	9.6
<u>Salem Labor Area (Salem County)</u>													
Labor Force	32.1	31.9	31.9	31.8	32.2	32.4	32.3	32.4	32.8	32.6	33.0	32.3	32.6
Employment	30.4	30.3	30.4	30.2	30.3	30.3	30.4	30.4	30.5	30.4	30.3	29.9	29.9
Unemployment Volume	1.7	1.6	1.5	1.6	1.9	2.1	1.9	2.0	2.3	2.2	2.7	2.4	2.7
Unemployment Rate (%)	5.3	5.0	4.7	5.0	5.9	6.5	5.9	6.2	7.0	6.7	8.2	7.4	8.3
<u>Trenton-Ewing Labor Area (Mercer County)</u>													
Labor Force	196.5	198.6	198.9	198.5	199.0	198.7	198.1	198.7	199.2	199.3	198.9	197.7	199.4
Employment	188.6	190.5	190.1	189.7	190.0	188.7	188.5	188.9	188.5	189.2	188.3	187.2	186.7
Unemployment Volume	7.9	8.1	8.8	8.8	9.0	10.0	9.6	9.8	10.7	10.1	10.6	10.5	12.7
Unemployment Rate (%)	4.0	4.1	4.4	4.4	4.5	5.0	4.8	4.9	5.4	5.1	5.3	5.3	6.4
<u>Vineland-Millville-Bridgeton Labor Area (Cumberland County)</u>													
Labor Force	68.4	68.6	69.6	68.7	68.8	69.2	69.2	69.4	69.8	70.0	70.5	70.1	70.6
Employment	64.0	63.8	64.7	63.9	63.7	63.8	64.0	64.1	63.7	63.9	63.7	63.5	63.2
Unemployment Volume	4.4	4.8	4.9	4.8	5.1	5.4	5.2	5.3	6.1	6.1	6.8	6.6	7.4
Unemployment Rate (%)	6.4	7.0	7.0	7.0	7.4	7.8	7.5	7.6	8.7	8.7	9.6	9.4	10.5

NEW JERSEY ECONOMIC INDICATORS

NEW JERSEY ECONOMIC INDICATORS

NEW
ECO

Statistical Section and Notes

ORS

INDICATORS

NEW JERSEY ECONOMIC INDICATORS

NEW JERSEY ECONOMIC INDICATORS

NEW JERSEY ECONOMIC INDICATORS

NEW JERSEY ECONOMIC INDICATORS

NEW JERSEY ECONOMIC INDICATORS

1. Civilian Labor Force (000)

Date	2005		2006		2007		2008	
	Unadj.	Adj.	Unadj.	Adj.	Unadj.	Adj.	Unadj.	Adj.
Jan	4,352.9	4,387.4	4,447.4	4,482.4	4,459.2	4,477.1	4,463.8	4,491.2
Feb	4,378.2	4,397.1	4,467.6	4,485.7	4,456.1	4,474.0	4,486.3	4,507.7
Mar	4,387.8	4,402.5	4,475.0	4,493.0	4,461.4	4,469.0	4,481.4	4,495.3
Apr	4,385.1	4,407.5	4,470.9	4,495.4	4,439.0	4,468.1	4,483.2	4,511.9
May	4,401.2	4,415.0	4,478.8	4,492.8	4,445.1	4,466.1	4,502.7	4,516.8
Jun	4,466.0	4,428.2	4,537.0	4,495.7	4,505.7	4,467.6	4,552.7	4,505.0
Jul	4,499.5	4,437.6	4,563.8	4,501.7	4,526.4	4,463.7	4,582.2	4,505.6
Aug	4,475.4	4,446.0	4,531.6	4,504.3	4,475.2	4,462.0	4,563.1	4,525.5
Sep	4,430.9	4,452.3	4,466.2	4,497.8	4,441.6	4,461.0	4,512.0	4,540.2
Oct	4,458.9	4,459.7	4,484.1	4,490.3	4,447.1	4,460.3	4,539.6	4,552.7
Nov	4,471.0	4,469.8	4,495.0	4,489.0	4,472.2	4,462.6	4,512.9R	4,519.6 R
Dec	4,472.0	4,475.5	4,496.0	4,485.2	4,466.3	4,463.8	4,541.2	4,550.6

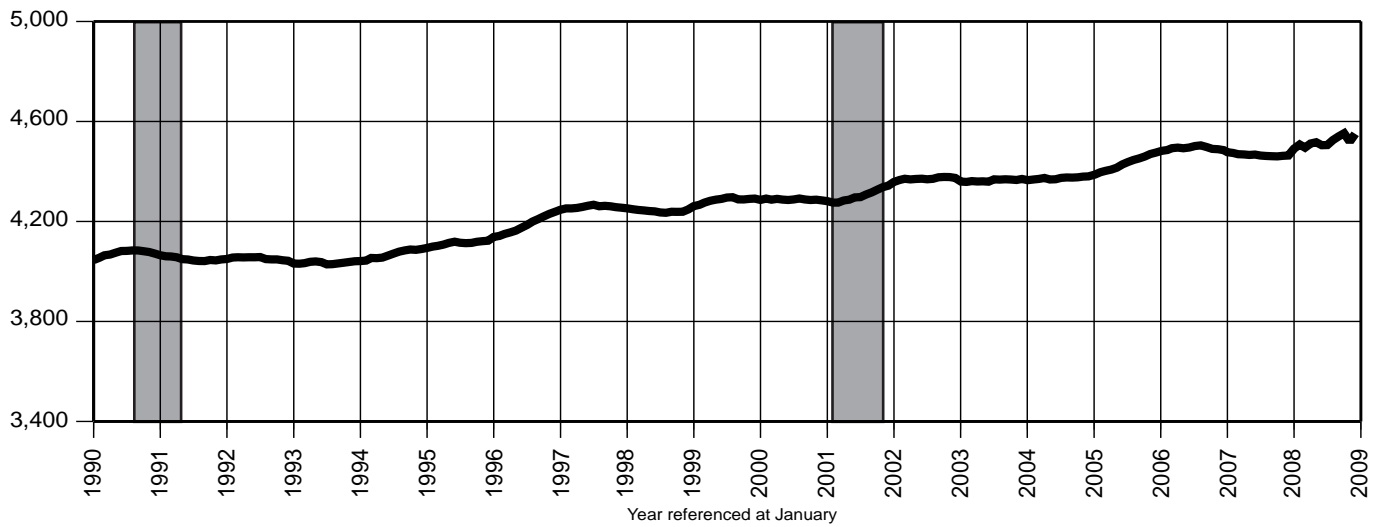
2. Resident Employment (000)

Date	2005		2006		2007		2008	
	Unadj.	Adj.	Unadj.	Adj.	Unadj.	Adj.	Unadj.	Adj.
Jan	4,142.6	4,194.5	4,221.0	4,267.8	4,244.3	4,285.3	4,235.8	4,287.1
Feb	4,157.4	4,200.0	4,233.2	4,273.3	4,248.6	4,281.4	4,248.2	4,291.3
Mar	4,178.2	4,206.3	4,253.2	4,281.7	4,265.8	4,275.5	4,250.6	4,278.2
Apr	4,206.0	4,218.1	4,259.5	4,280.6	4,259.3	4,275.0	4,269.8	4,288.6
May	4,221.1	4,225.2	4,269.5	4,280.7	4,265.4	4,275.8	4,267.2	4,273.9
Jun	4,271.6	4,234.6	4,320.4	4,283.9	4,314.4	4,278.4	4,311.7	4,267.4
Jul	4,282.5	4,240.7	4,320.7	4,288.0	4,310.0	4,274.3	4,314.2	4,260.1
Aug	4,285.0	4,244.9	4,320.0	4,290.1	4,292.8	4,274.2	4,301.0	4,258.1
Sep	4,236.9	4,251.6	4,267.7	4,287.7	4,261.0	4,273.8	4,260.1	4,276.1
Oct	4,273.8	4,256.8	4,307.3	4,289.3	4,277.2	4,274.8	4,283.6	4,278.7
Nov	4,266.8	4,260.0	4,310.8	4,289.7	4,297.1	4,274.6	4,251.9R	4,244.0R
Dec	4,272.4	4,261.5	4,319.9	4,290.5	4,282.8	4,275.8	4,233.1	4,225.7

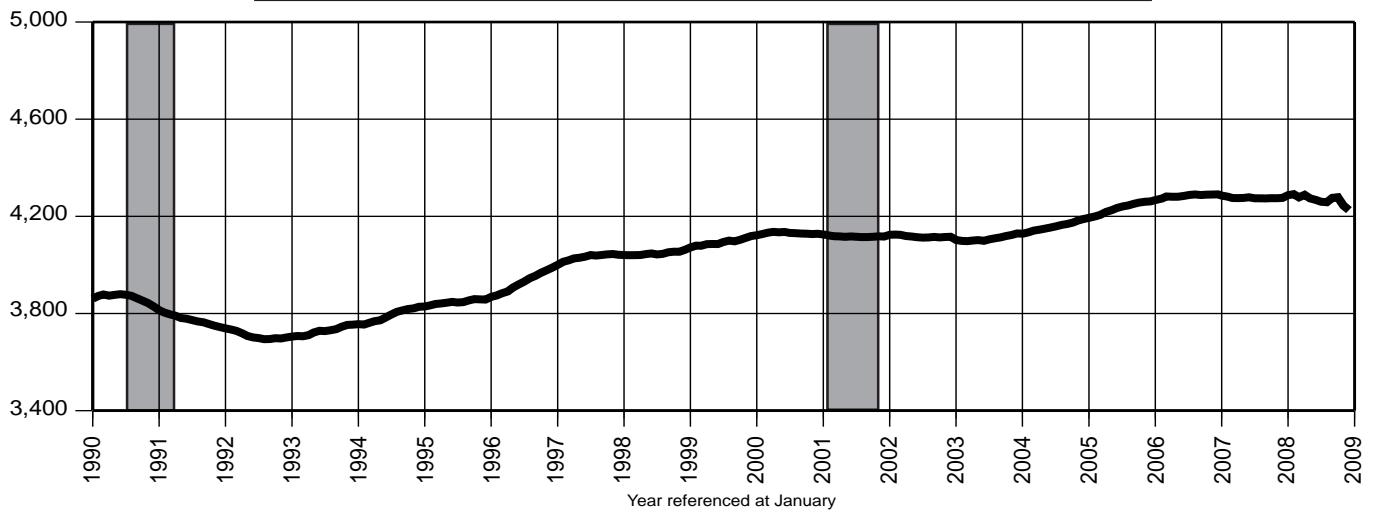
3. Unemployment (000)

Date	2005		2006		2007		2008	
	Unadj.	Adj.	Unadj.	Adj.	Unadj.	Adj.	Unadj.	Adj.
Jan	210.3	192.9	226.4	214.6	214.9	191.8	228.1	204.1
Feb	220.9	197.1	234.4	212.4	207.4	192.6	238.2	216.3
Mar	209.6	196.2	221.7	211.3	195.6	193.6	230.8	217.1
Apr	179.1	189.4	211.4	214.8	179.7	193.1	213.4	223.3
May	180.1	189.8	209.2	212.2	179.7	190.3	235.5	242.9
Jun	194.3	193.6	216.6	211.8	191.3	189.3	241.0	237.6
Jul	217.0	197.0	243.1	213.7	216.4	189.4	268.0	245.5
Aug	190.4	201.1	211.6	214.1	182.5	187.7	262.1	267.4
Sep	194.1	200.6	198.4	210.1	180.6	187.2	251.9	264.1
Oct	185.1	203.0	176.7	200.9	169.9	185.5	256.0	273.9
Nov	204.2	209.8	184.2	199.3	175.1	188.1	261.0R	275.1R
Dec	199.6	214.0	176.1	194.8	183.5	188.0	308.1	324.9

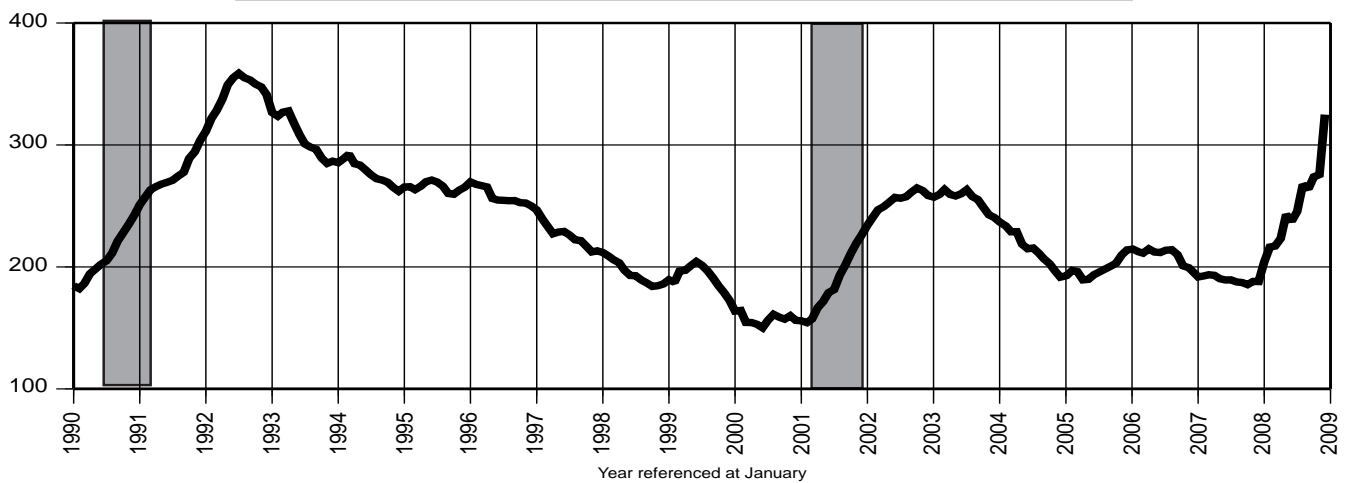
1. Civilian Labor Force (000)



2. Resident Employment (000)



3. Unemployment (000)



Indicator Series 4-6 Resident Labor Force

4. Labor Force Participation Rate (%)

Date	2005		2006		2007		2008	
	Unadj.	Adj.	Unadj.	Adj.	Unadj.	Adj.	Unadj.	Adj.
Jan	65.3	65.8	66.4	66.9	66.2	66.5	65.9	66.3
Feb	65.7	66.0	66.6	66.9	66.1	66.4	66.2	66.5
Mar	65.8	66.0	66.7	67.0	66.2	66.3	66.1	66.3
Apr	65.8	66.1	66.7	67.0	65.9	66.3	66.1	66.5
May	66.0	66.2	66.8	67.0	65.9	66.2	66.3	66.5
Jun	66.9	66.3	67.6	67.0	66.8	66.2	67.0	66.3
Jul	67.4	66.4	68.0	67.1	67.1	66.1	67.4	66.3
Aug	67.0	66.5	67.5	67.1	66.3	66.1	67.1	66.6
Sep	66.3	66.6	66.5	66.9	65.7	66.0	66.3	66.7
Oct	66.6	66.6	66.7	66.8	65.7	65.9	66.7	66.9
Nov	66.8	66.8	66.8	66.7	66.1	65.9	66.2R	66.3R
Dec	66.8	66.8	66.8	66.6	66.0	65.9	66.6	66.8

5. Employment /Population Ratio (%)

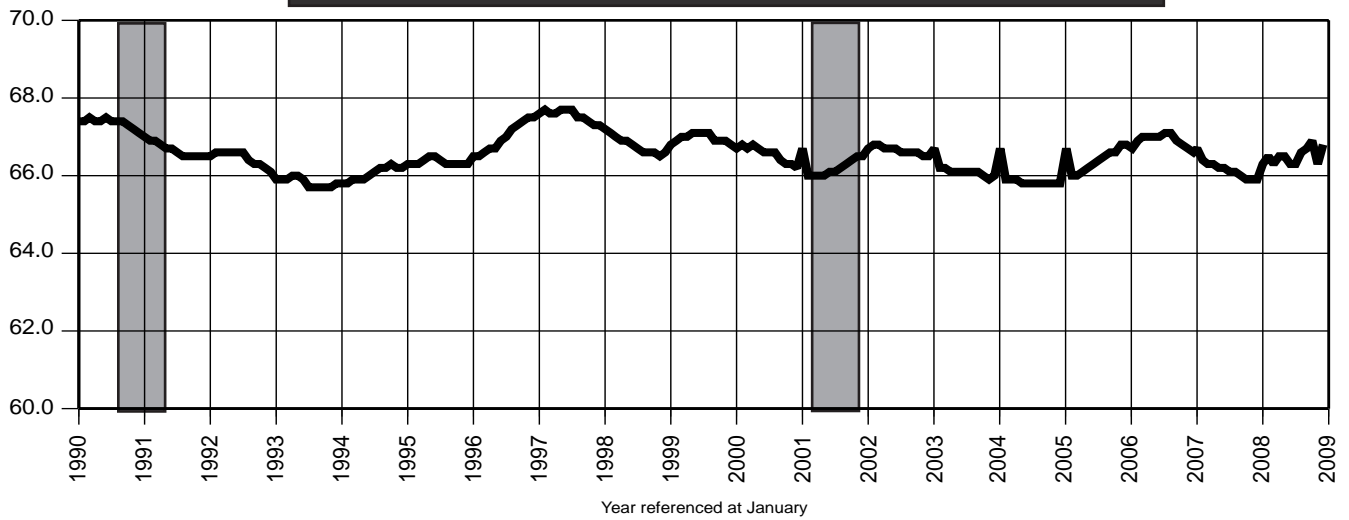
Date	2005		2006		2007		2008	
	Unadj.	Adj.	Unadj.	Adj.	Unadj.	Adj.	Unadj.	Adj.
Jan	62.2	63.0	63.0	63.7	63.0	63.6	62.5	63.3
Feb	62.4	63.0	63.1	63.7	63.1	63.6	62.7	63.3
Mar	62.7	63.1	63.4	63.9	63.3	63.5	62.7	63.1
Apr	63.1	63.3	63.5	63.8	63.2	63.4	62.9	63.2
May	63.3	63.3	63.6	63.8	63.3	63.4	62.9	63.0
Jun	64.0	63.4	64.4	63.8	64.0	63.4	63.5	62.8
Jul	64.1	63.5	64.4	63.9	63.9	63.3	63.5	62.7
Aug	64.1	63.5	64.3	63.9	63.6	63.3	63.3	62.6
Sep	63.4	63.6	63.5	63.8	63.0	63.2	62.6	62.8
Oct	63.9	63.6	64.1	63.8	63.2	63.2	62.9	62.8
Nov	63.7	63.6	64.1	63.8	63.5	63.2	62.4	62.3
Dec	63.8	63.6	64.2	63.7	63.2	63.1	62.1	62.0

6. Unemployment Rate (%)

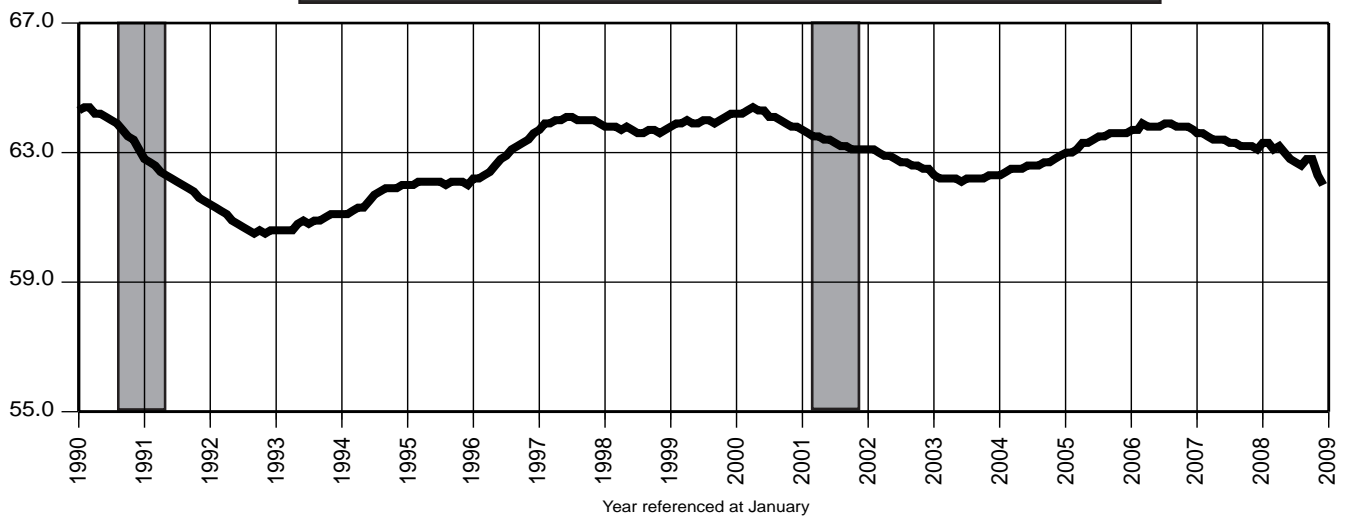
Date	2005		2006		2007		2008	
	Unadj.	Adj.	Unadj.	Adj.	Unadj.	Adj.	Unadj.	Adj.
Jan	4.8	4.4	5.1	4.8	4.8	4.3	5.1	4.5
Feb	5.0	4.5	5.2	4.7	4.7	4.3	5.3	4.8
Mar	4.8	4.5	5.0	4.7	4.4	4.3	5.1	4.8
Apr	4.1	4.3	4.7	4.8	4.0	4.3	4.8	4.9
May	4.1	4.3	4.7	4.7	4.0	4.3	5.2	5.4
Jun	4.4	4.4	4.8	4.7	4.2	4.2	5.3	5.3
Jul	4.8	4.4	5.3	4.7	4.8	4.2	5.8	5.4
Aug	4.3	4.5	4.7	4.8	4.1	4.2	5.7	5.9
Sep	4.4	4.5	4.4	4.7	4.1	4.2	5.6	5.8
Oct	4.2	4.6	3.9	4.5	3.8	4.2	5.6	6.0
Nov	4.6	4.7	4.1	4.4	3.9	4.2	5.8	6.1
Dec	4.5	4.8	3.9	4.3	4.1	4.2	6.8	7.1

Indicator Series 4-6 Resident Labor Force

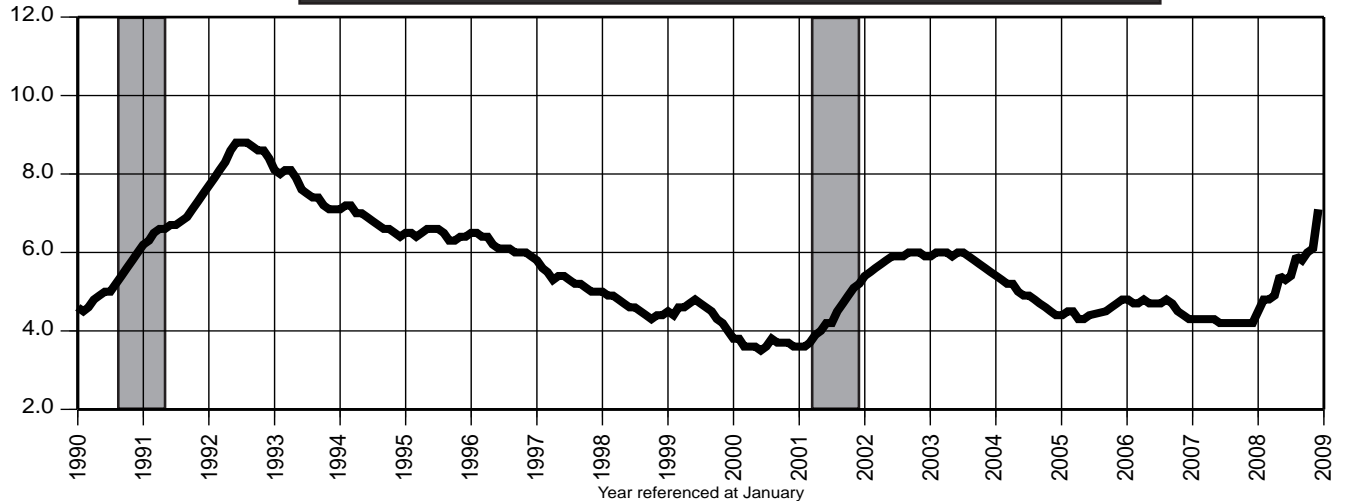
4. Labor Force Participation Rate (%)



5. Employment /Population Ratio (%)



6. Unemployment Rate (%)



You're viewing an archived copy from the New Jersey State Library.

Indicator Series 7-9 Establishment Employment

7. Nonfarm Payroll Employment (000)

	2005		2006		2007		2008	
Date	Unadj.	Adj.	Unadj.	Adj.	Unadj.	Adj.	Unadj.	Adj.
Jan	3,946.0	4,023.8	3,984.6	4,063.2	3,993.6	4,071.9	4,008.0	4,074.0
Feb	3,951.3	4,026.5	3,992.5	4,068.8	3,989.4	4,066.3	4,003.2	4,071.9
Mar	3,975.3	4,021.2	4,028.4	4,075.0	4,020.6	4,067.2	4,028.2	4,071.7
Apr	4,024.8	4,040.6	4,050.8	4,067.2	4,050.1	4,067.3	4,058.7	4,071.6
May	4,057.6	4,036.3	4,090.9	4,068.1	4,100.6	4,077.0	4,091.2	4,072.6
Jun	4,111.9	4,042.8	4,143.4	4,071.6	4,157.0	4,083.2	4,131.7	4,068.7
Jul	4,066.0	4,043.5	4,091.5	4,068.2	4,098.7	4,074.8	4,089.0	4,068.8
Aug	4,048.7	4,044.1	4,076.5	4,071.7	4,079.4	4,073.4	4,064.9	4,065.4
Sep	4,054.4	4,049.1	4,075.3	4,071.1	4,073.3	4,070.1	4,060.2	4,061.4
Oct	4,059.1	4,044.0	4,088.1	4,073.9	4,093.7	4,073.8	4,074.4	4,054.4
Nov	4,082.2	4,049.3	4,107.4	4,075.0	4,108.5	4,076.0	4,066.9R	4,034.8R
Dec	4,091.9	4,048.0	4,122.3	4,077.9	4,121.2	4,082.6	4,057.6	4,019.6

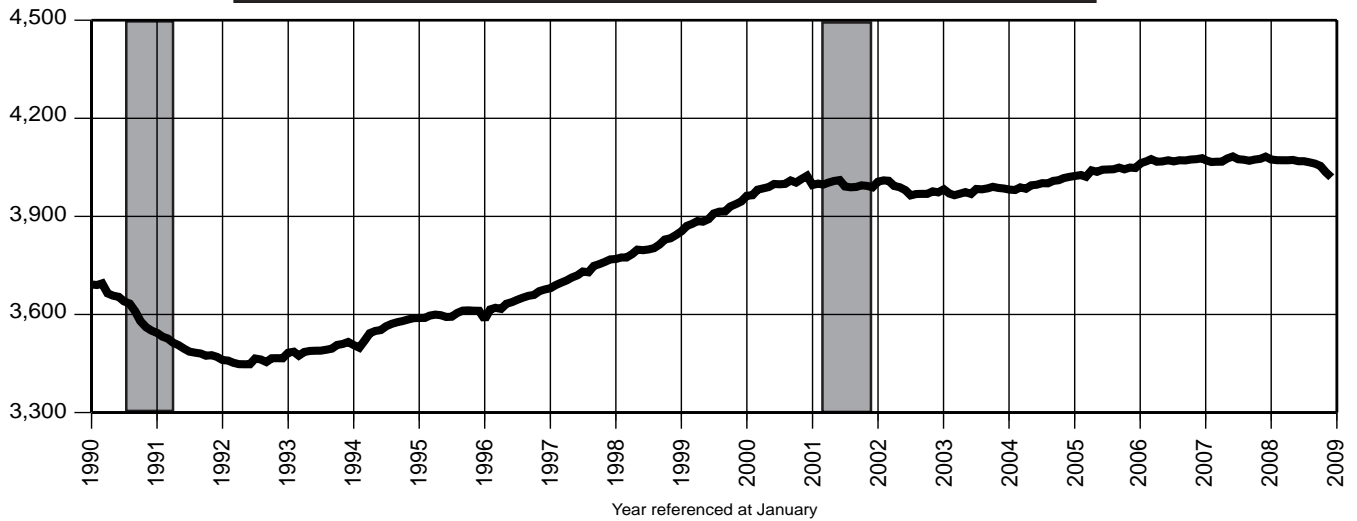
8. Private Sector Payroll Employment (000)

	2005		2006		2007		2008	
Date	Unadj.	Adj.	Unadj.	Adj.	Unadj.	Adj.	Unadj.	Adj.
Jan	3,309.8	3,384.9	3,340.7	3,415.9	3,348.4	3,423.1	3,360.2	3,425.5
Feb	3,302.7	3,386.7	3,336.1	3,421.1	3,332.8	3,418.2	3,345.3	3,423.0
Mar	3,325.3	3,382.4	3,370.0	3,427.8	3,360.8	3,418.9	3,368.8	3,422.9
Apr	3,373.0	3,400.1	3,392.0	3,419.5	3,390.9	3,419.1	3,398.6	3,423.0
May	3,409.0	3,395.7	3,435.5	3,421.1	3,442.8	3,427.7	3,433.5	3,423.6
Jun	3,461.0	3,401.4	3,486.1	3,424.3	3,496.7	3,433.3	3,473.3	3,419.4
Jul	3,450.0	3,402.5	3,469.4	3,421.3	3,476.2	3,427.6	3,465.0	3,419.9
Aug	3,443.0	3,402.6	3,465.5	3,424.9	3,468.0	3,426.4	3,455.4	3,418.8
Sep	3,426.1	3,405.9	3,445.1	3,425.5	3,442.6	3,423.5	3,431.2	3,414.9
Oct	3,409.3	3,400.7	3,433.0	3,425.2	3,438.9	3,426.6	3,420.1	3,407.7
Nov	3,425.5	3,404.6	3,447.6	3,427.0	3,447.9	3,427.6	3,408.5 R	3,388.6 R
Dec	3,435.4	3,402.9	3,462.8	3,430.1	3,460.9	3,433.8	3,400.5	3,374.0

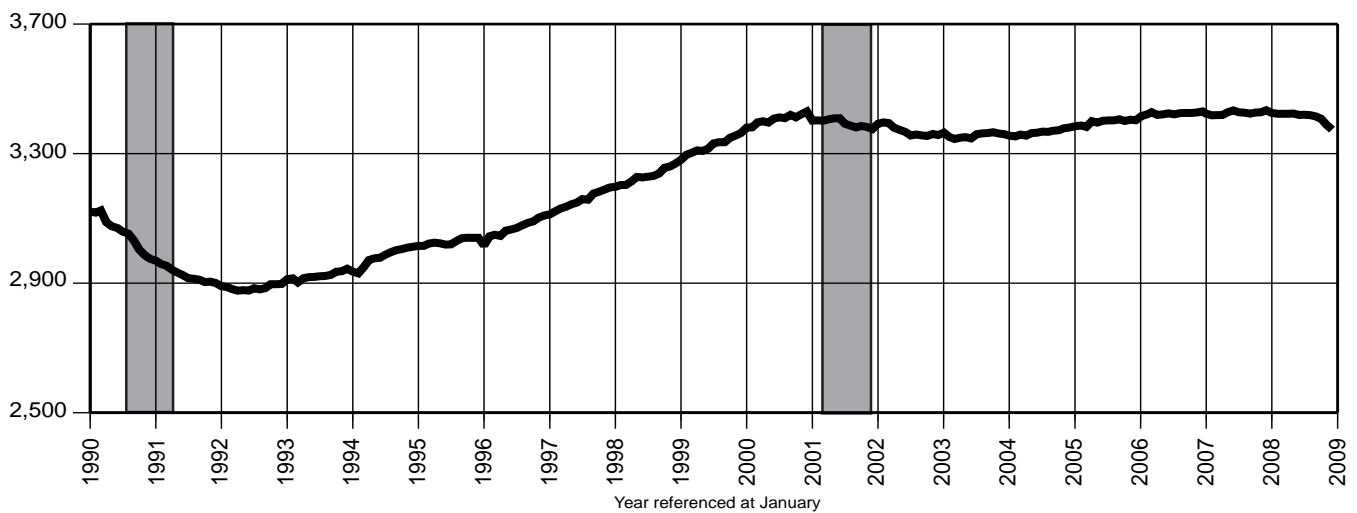
9. Construction Payroll Employment (000)

	2005		2006		2007		2008	
Date	Unadj.	Adj.	Unadj.	Adj.	Unadj.	Adj.	Unadj.	Adj.
Jan	155.4	167.4	161.5	173.6	161.2	173.2	158.9	169.3
Feb	151.4	167.0	161.2	176.7	155.4	170.8	154.5	168.9
Mar	154.7	164.5	166.5	176.5	160.7	171.0	157.5	168.0
Apr	166.0	167.8	175.4	176.9	169.7	171.1	164.5	166.9
May	171.6	168.6	178.8	175.5	175.5	172.0	169.5	167.3
Jun	174.8	169.2	181.0	175.2	179.2	173.2	172.2	166.8
Jul	176.6	169.8	181.1	174.5	178.2	171.7	173.5	166.9
Aug	178.0	170.2	182.3	174.5	179.3	171.6	174.5	167.0
Sep	178.5	171.9	181.2	174.7	177.4	171.0	172.7	166.5
Oct	174.7	169.9	178.4	173.9	175.9	171.0	171.1	166.2
Nov	176.0	172.6	176.8	173.5	174.4	170.8	167.5 R	163.9 R
Dec	172.0	171.0	175.3	174.2	171.4	170.1	162.1	160.9

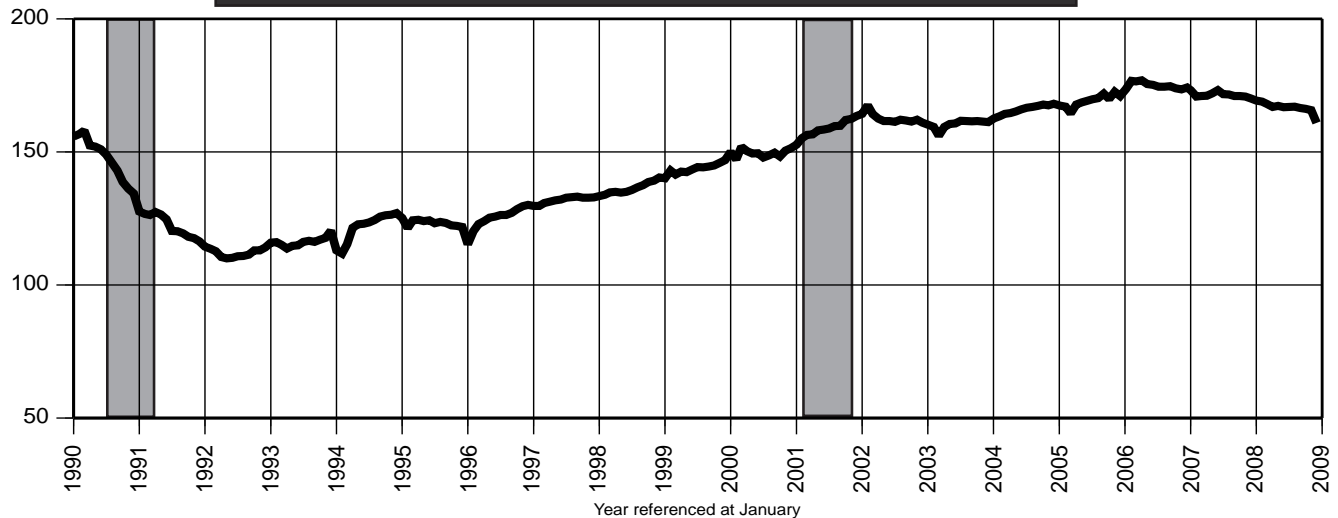
7. Nonfarm Payroll Employment (000)



8. Private Sector Payroll Employment (000)



9. Construction Payroll Employment (000)



Indicator Series 10-12 Establishment Employment

10. Total Manufacturing Payroll Employment (000)

Date	2005		2006		2007		2008	
	Unadj.	Adj.	Unadj.	Adj.	Unadj.	Adj.	Unadj.	Adj.
Jan	330.8	334.5	326.4	329.7	314.5	317.3	307.0	309.7
Feb	331.2	333.7	325.9	328.2	313.5	315.8	306.4	308.7
Mar	332.2	333.2	326.6	327.6	313.5	314.6	307.0	308.3
Apr	330.7	331.9	324.8	326.0	312.8	314.0	305.9	306.9
May	331.3	331.0	325.5	325.4	313.2	313.2	304.3	304.6
Jun	332.9	330.2	326.7	324.2	315.0	312.7	304.2	301.9
Jul	329.0	329.0	323.9	323.6	313.0	312.7	302.3	302.1
Aug	329.6	329.0	323.3	322.6	312.6	311.8	301.8	301.6
Sep	329.9	328.3	322.7	321.4	312.3	311.1	301.0	299.9
Oct	329.2	328.7	321.3	320.7	311.4	310.6	298.5	297.7
Nov	328.8	328.0	320.5	319.7	311.4	309.9	297.1R	295.7R
Dec	328.9	327.5	319.4	318.1	311.0	309.7	295.1	293.8

11. Trade, Transportation & Utilities Payroll Employment (000)

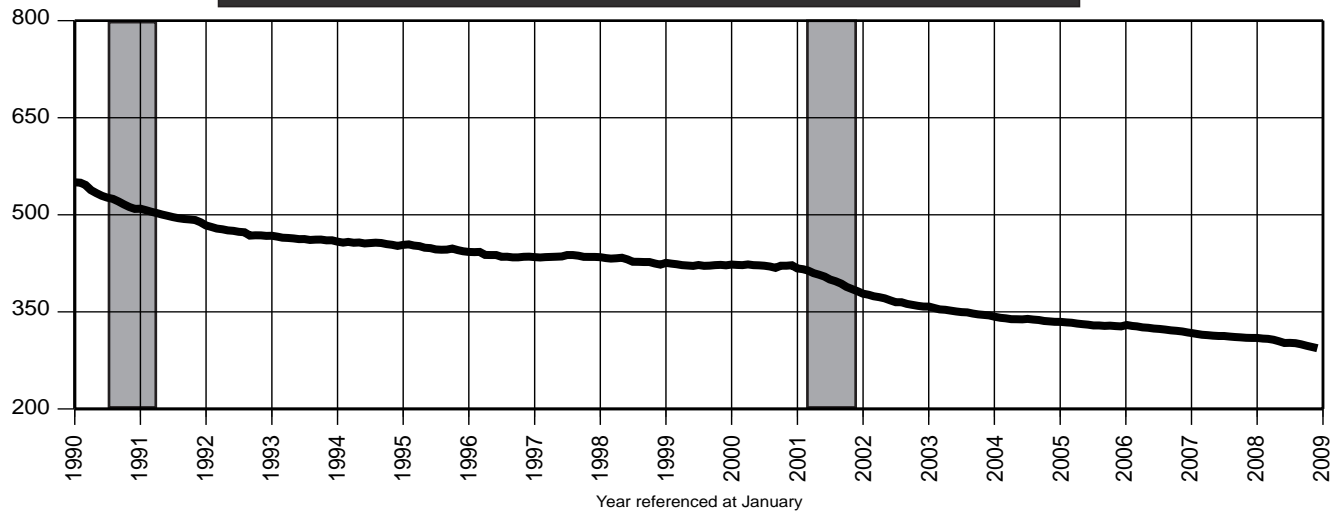
Date	2005		2006		2007		2008	
	Unadj.	Adj.	Unadj.	Adj.	Unadj.	Adj.	Unadj.	Adj.
Jan	870.8	875.7	871.2	876.2	871.2	876.1	870.3	877.3
Feb	862.3	877.8	859.3	875.3	857.7	874.0	858.6	874.2
Mar	864.9	877.6	863.8	877.0	860.6	873.8	861.9	874.7
Apr	868.4	880.0	863.3	875.3	861.6	873.9	863.2	873.3
May	875.7	878.1	872.8	875.0	874.5	876.6	871.4	873.8
Jun	885.6	878.6	881.7	874.3	886.2	878.5	879.6	873.0
Jul	876.7	879.2	872.8	874.8	875.9	877.7	871.4	872.9
Aug	873.6	878.5	870.3	875.1	872.6	877.2	868.4	872.9
Sep	875.4	878.0	871.9	874.6	873.6	876.3	871.0	872.8
Oct	877.1	874.6	878.8	876.5	879.5	875.2	874.3	870.1
Nov	890.8	873.9	895.6	878.6	894.1	877.2	882.9R	866.3R
Dec	906.2	875.2	910.5	879.2	908.2	879.9	889.3	861.8

12. Information Payroll Employment (000)

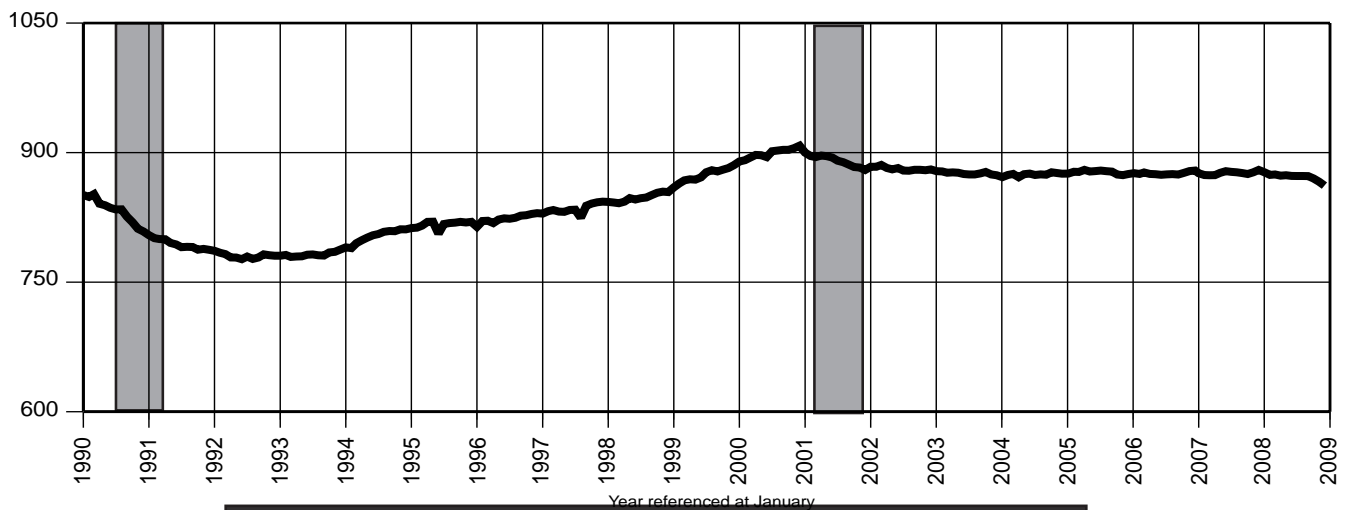
Date	2005		2006		2007		2008	
	Unadj.	Adj.	Unadj.	Adj.	Unadj.	Adj.	Unadj.	Adj.
Jan	96.7	97.0	97.4	97.8	96.3	96.7	98.3	98.7
Feb	96.4	96.7	98.1	98.4	97.1	97.4	97.2	97.8
Mar	97.0	96.7	98.2	97.9	97.5	97.2	97.6	97.6
Apr	96.2	96.7	97.0	97.6	97.1	97.7	97.9	98.5
May	96.6	96.8	97.4	97.6	97.4	97.6	98.3	98.5
Jun	97.8	97.3	98.3	97.7	98.1	97.5	99.0	98.6
Jul	97.4	97.2	97.7	97.5	98.1	97.9	98.7	98.7
Aug	97.2	96.8	98.1	97.7	99.2	98.7	99.4	99.2
Sep	96.7	97.2	97.9	98.3	97.7	98.0	98.3	98.6
Oct	96.9	97.3	96.4	96.9	98.0	98.1	98.3	98.4
Nov	97.8	97.5	96.2	95.9	98.6	98.0	97.9R	97.3R
Dec	98.3	97.7	96.5	95.9	99.1	98.3	97.9	97.1

Indicator Series 10-12 Establishment Employment

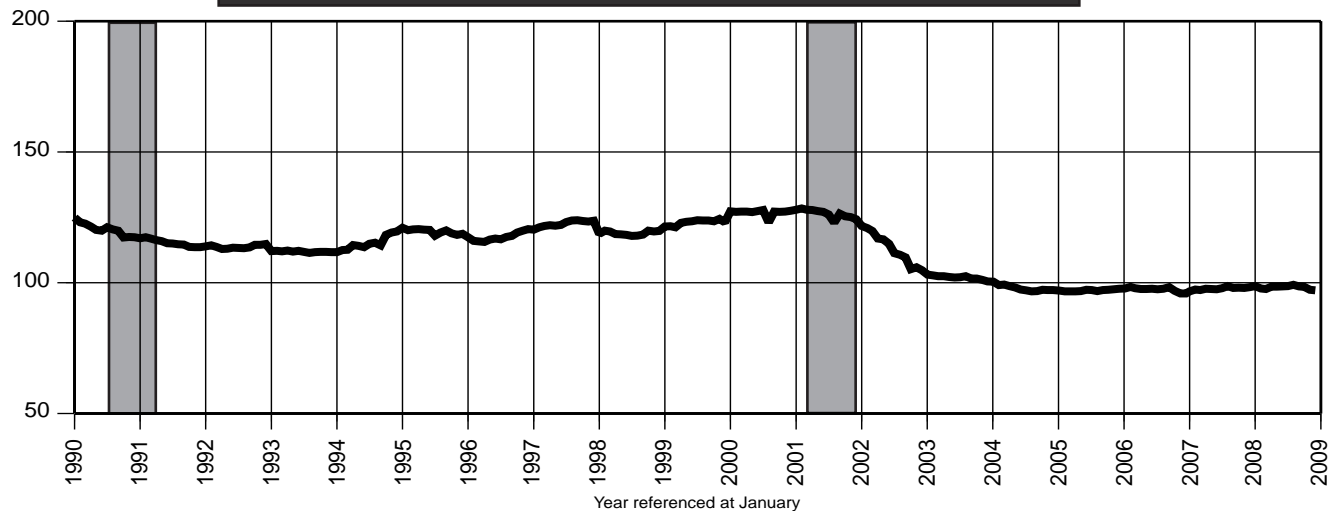
10. Total Manufacturing Payroll Employment (000)



11. Trade, Transportation & Utilities Payroll Employment (000)



12. Information Payroll Employment (000)



13. Financial Activities Payroll Employment (000)

Date	2005		2006		2007		2008	
	Unadj.	Adj.	Unadj.	Adj.	Unadj.	Adj.	Unadj.	Adj.
Jan	275.8	278.5	276.8	279.6	274.9	277.7	267.9	269.3
Feb	275.1	278.5	276.5	280.0	274.3	277.7	267.4	269.2
Mar	275.9	278.7	277.4	280.2	274.3	277.0	267.7	269.4
Apr	277.5	279.0	278.4	280.0	274.8	276.4	267.4	268.5
May	278.7	279.0	279.7	279.9	276.0	276.2	267.7	267.8
Jun	281.8	279.4	282.0	279.5	278.7	276.2	269.8	267.8
Jul	284.0	280.1	283.7	279.6	279.0	274.9	268.8	266.3
Aug	284.4	280.7	283.1	279.4	277.9	274.1	268.4	266.2
Sep	281.7	281.3	279.3	278.9	273.7	273.3	264.1	264.4
Oct	279.6	279.8	278.6	278.9	271.4	271.8	263.1	263.5
Nov	280.8	280.7	278.4	278.3	270.6	270.9	262.5R	262.9R
Dec	281.0	280.7	278.6	278.1	270.5	270.2	263.0	262.7

14. Professional & Business Services Payroll Employment (000)

Date	2005		2006		2007		2008	
	Unadj.	Adj.	Unadj.	Adj.	Unadj.	Adj.	Unadj.	Adj.
Jan	570.0	589.1	577.5	597.1	584.4	604.3	593.0	609.0
Feb	571.5	589.1	582.6	600.8	585.3	603.5	593.5	609.5
Mar	577.0	587.1	591.5	602.2	594.0	604.7	600.5	608.9
Apr	593.0	594.8	597.0	598.7	604.8	606.6	610.7	611.7
May	594.2	592.9	602.4	600.9	610.6	609.0	614.7	613.3
Jun	604.3	595.1	611.9	602.1	620.1	609.9	620.6	612.7
Jul	600.3	593.2	609.8	602.6	617.2	609.9	623.5	616.4
Aug	601.6	592.5	613.7	604.4	620.2	610.8	624.5	615.7
Sep	599.8	593.9	610.5	604.6	615.8	610.1	622.3	615.9
Oct	600.7	594.9	611.3	605.2	615.3	610.9	620.6	616.0
Nov	600.3	594.2	612.4	606.2	615.3	611.1	614.7 R	610.5 R
Dec	597.4	592.5	611.6	606.7	614.5	612.8	607.2	605.5

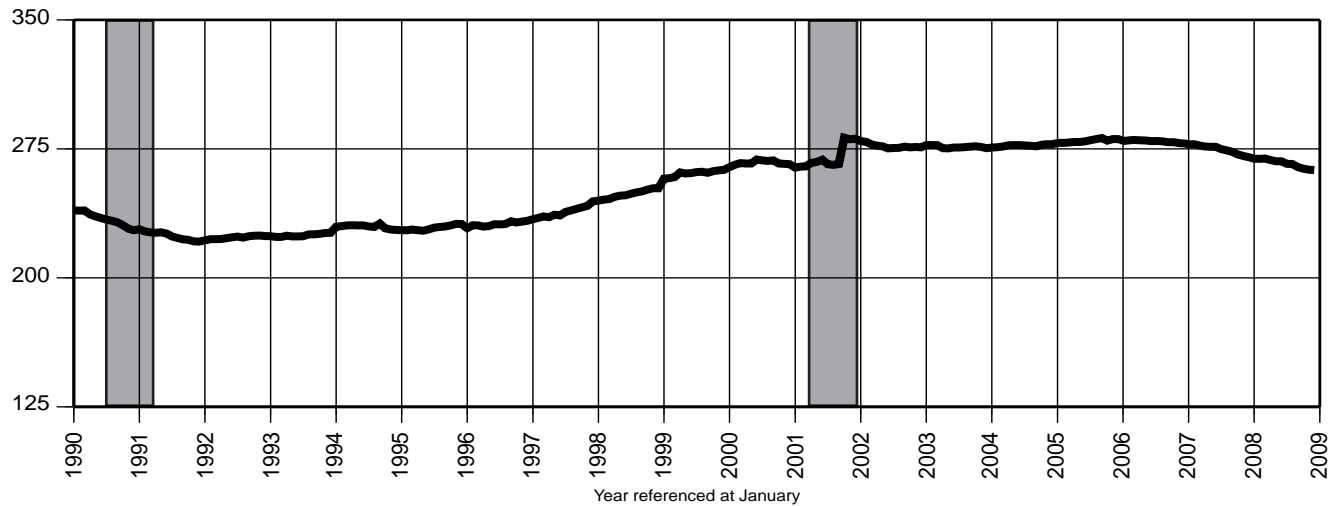
15. Education & Health Services Payroll Employment (000)

Date	2005		2006		2007		2008	
	Unadj.	Adj.	Unadj.	Adj.	Unadj.	Adj.	Unadj.	Adj.
Jan	549.3	553.3	560.8	564.7	571.6	575.3	584.3	586.5
Feb	552.9	553.9	563.2	564.2	575.6	576.6	587.4	587.9
Mar	555.3	553.9	567.1	565.3	580.1	578.2	590.4	588.4
Apr	556.9	556.0	566.2	565.5	577.3	576.7	591.6	590.0
May	561.3	557.0	571.3	566.8	583.5	578.9	594.5	590.9
Jun	561.0	557.8	571.5	568.4	581.6	578.5	593.6	591.2
Jul	555.3	559.4	563.9	568.3	574.5	579.1	586.3	590.3
Aug	551.2	559.2	562.2	570.5	570.4	578.8	582.7	590.9
Sep	557.1	560.4	567.8	571.3	577.3	580.8	587.8	591.8
Oct	565.0	563.0	573.2	571.1	585.4	583.8	594.5	592.9
Nov	567.6	563.7	576.4	572.5	588.3	584.7	596.6R	592.9R
Dec	568.1	563.4	579.7	574.8	589.8	585.9	595.0	591.0

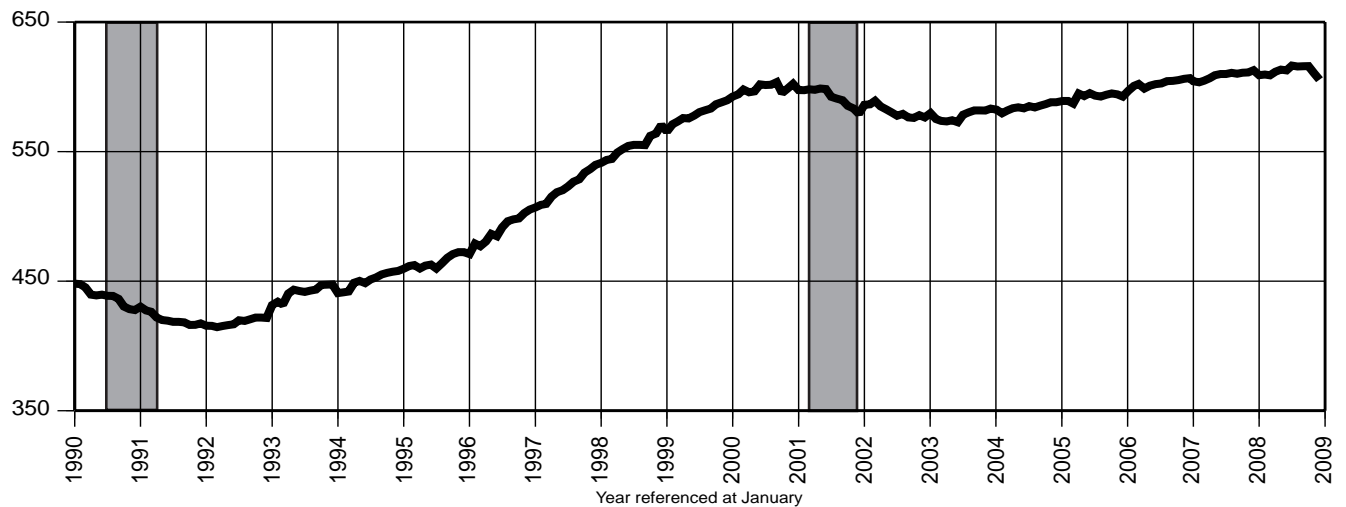
You're viewing an archived copy from the New Jersey State Library.

Indicator Series 13-15 Establishment Employment

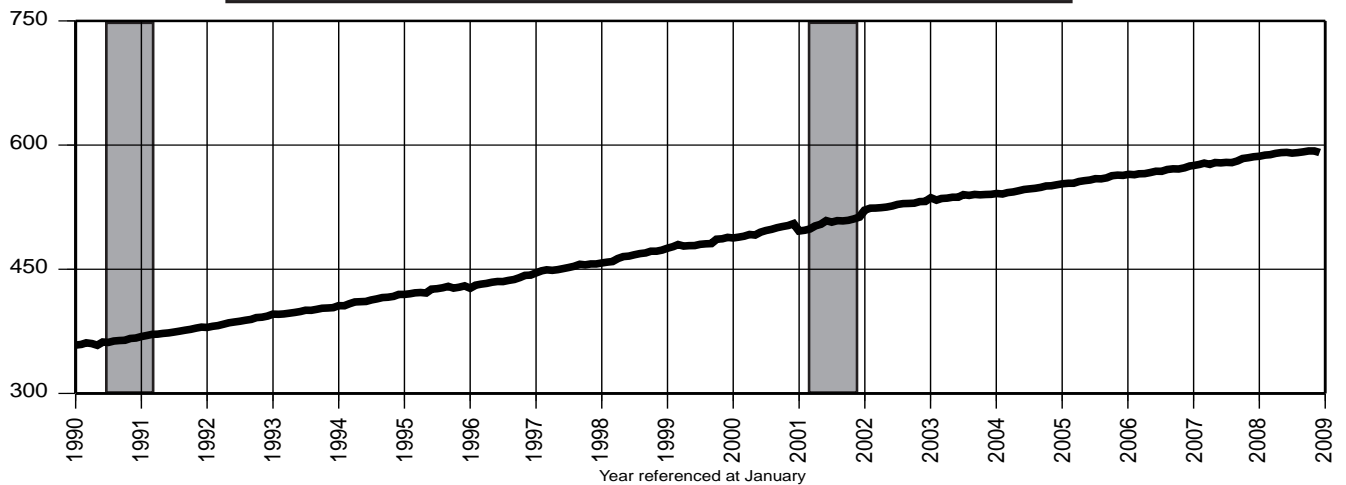
13. Financial Activities Payroll Employment (000)



14. Professional & Business Services Payroll Employment (000)



15. Education & Health Services Payroll Employment (000)



16. Leisure & Hospitality Payroll Employment (000)

Date	2005		2006		2007		2008	
	Unadj.	Adj.	Unadj.	Adj.	Unadj.	Adj.	Unadj.	Adj.
Jan	305.1	331.1	310.7	336.4	313.2	339.1	316.4	339.3
Feb	305.3	331.2	310.8	336.7	312.8	339.0	316.0	340.1
Mar	311.3	332.1	319.0	339.5	318.2	338.8	321.2	341.0
Apr	324.2	334.0	327.5	337.5	327.8	338.2	330.4	340.1
May	338.8	332.9	343.7	337.7	345.4	339.2	344.8	340.0
Jun	359.8	334.0	366.5	339.8	367.7	340.3	363.8	339.8
Jul	367.5	334.5	371.6	338.7	371.4	338.0	369.5	338.5
Aug	364.9	335.1	368.9	339.0	368.3	337.7	365.9	337.8
Sep	348.2	335.0	353.0	339.7	350.3	337.0	347.8	337.9
Oct	327.7	333.1	333.5	339.4	337.3	339.7	333.6R	336.0R
Nov	324.5	334.0	329.5	339.3	330.6	339.6	327.2	336.1
Dec	323.9	334.7	328.4	339.6	330.6	340.8		

17. Consumer Price Index - (CPI-U) (1982 = 100)

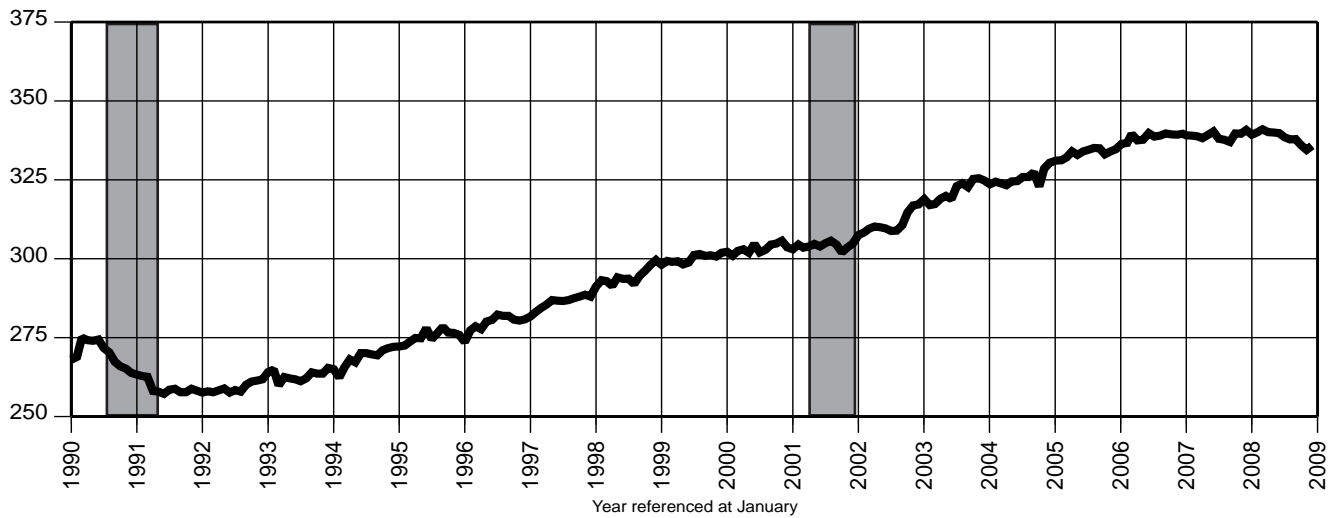
Date	US	2006		US	2007		US	2008	
		NY	PA		NY	PA		NY	PA
Jan	198.3	215.9	*	202.416	221.767	*	211.080	229.869	*
Feb	198.7	216.4	209.0	203.499	223.066	213.152	211.693	231.020	220.935
Mar	199.8	218.2	*	205.352	224.551	*	213.528	233.122	*
Apr	201.5	220.2	211.6	206.686	225.780	215.270	214.823	233.822	223.622
May	202.5	221.6	*	207.949	227.146	*	216.632	236.151	*
Jun	202.9	222.6	213.9	208.352	228.258	217.255	218.815	238.580	228.408
Jul	203.5	223.1	*	208.299	228.628	*	219.964	240.273	*
Aug	203.9	224.1	216.4	207.917	228.326	218.692	219.086	240.550	228.337
Sep	202.9	222.9	*	208.490	228.308	*	218.783	240.089	*
Oct	201.8	221.7	211.6	208.936	228.552	218.929	216.573	238.403	225.113
Nov	201.5	220.9	*	210.177	229.504	*	212.425	234.498	*
Dec	201.8	221.3	211.6	210.036	229.395	219.025			

18. Consumer Confidence Index, Middle Atlantic Region

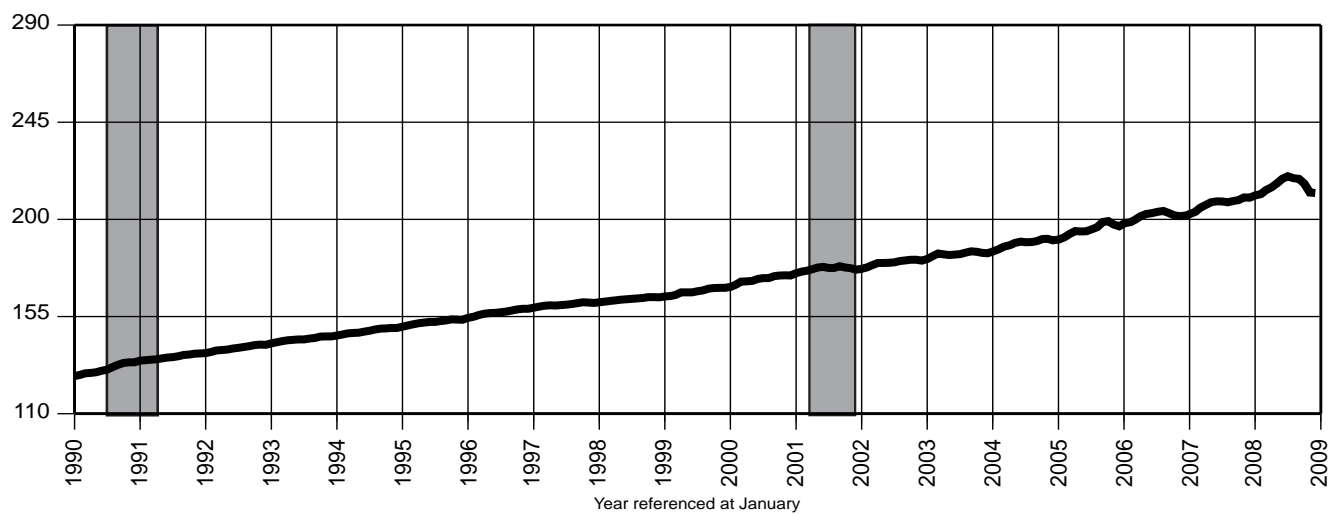
Date	2005		(Seasonally unadjusted) 2006		2007		2008	
Jan	86.7		82.5		91.4		72.2	
Feb	89.0		83.4		94.1		59.6	
Mar	83.9		95.0		92.3		51.9	
Apr	79.2		90.0		98.4		49.7	
May	70.7		83.6		89.8		45.4	
Jun	87.9		86.0		84.3		40.9	
Jul	88.0		81.4		99.1		33.6	
Aug	72.4		74.6		83.8		44.9	
Sep	67.9		90.0		93.7		50.1	
Oct	76.8		97.0		86.8		35.0	
Nov	77.7		91.6		78.8		45.2R	
Dec	83.8		88.6		72.5		30.2	

Indicator Series 16-18 Leisure & Hospitality, CPI and Confidence Index

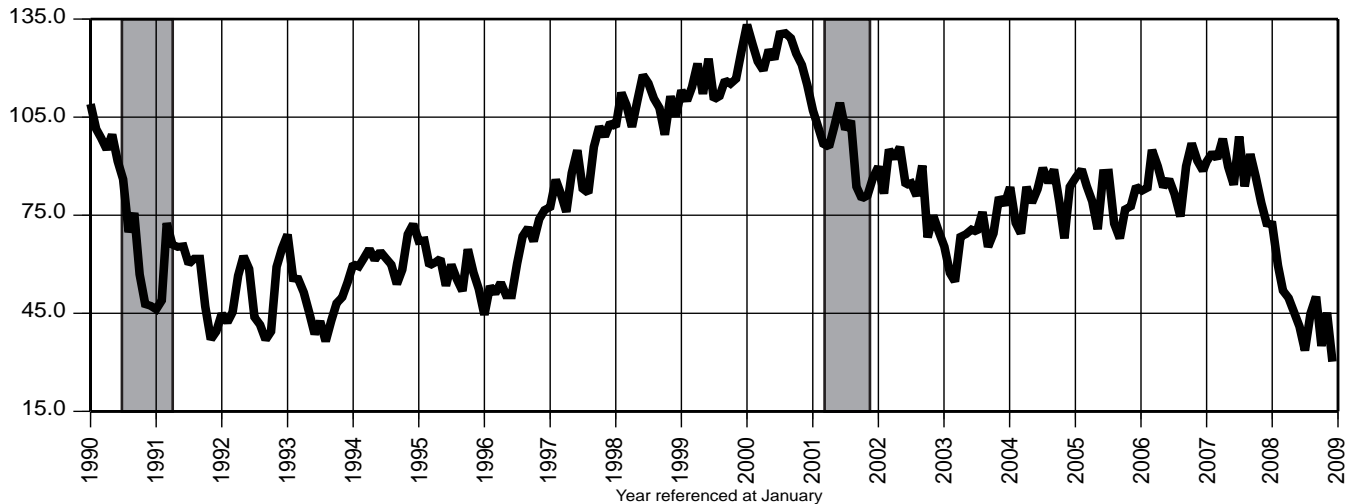
16. Leisure & Hospitality Payroll Employment (000)



17. Consumer Price Index - (CPI-U) (1982 = 100)



18. Consumer Confidence Index, Middle Atlantic Region



RESTRICTIONS: McGraw-Hill monthly construction contract data (series: 19-21) are published by special contract.

REPRINTING AND ELECTRONIC DISSEMINATION OF THESE DATA ARE PROHIBITED BY LAW.

RESTRICTIONS: McGraw-Hill monthly construction contract data (series: 19-21) are published by special contract.

REPRINTING AND ELECTRONIC DISSEMINATION OF THESE DATA ARE PROHIBITED BY LAW.

You're viewing an archived copy from the New Jersey State Library

Indicator Series 22-24 Private Residential Building Permits

22. Total Private Dwelling Units Authorized by Building Permits

(Seasonality not statistically significant)

Date	2005	2006	2007	2008	
	Unadj.	Unadj.	Unadj.	Unadj.	
Jan	2,881	2,548	2,077	1,676	R
Feb	2,376	2,502	1,648	1,335	R
Mar	2,964	2,989	1,871	2,067	R
Apr	3,805	2,654	2,100	1,904	R
May	4,329	3,044	1,992	1,687	R
Jun	3,830	3,314	2,759	2,465	
Jul	3,006	4,516	1,905	1,422	R
Aug	4,471	2,675	3,084	1,240	
Sep	2,784	2,850	1,896	1,470	R
Oct	2,936	2,030	2,283	1,280	R
Nov	2,884	3,196	2,133	826	
Dec	2,367	2,024	1,652		

23. Private Single-Family Dwelling Units Authorized by Building Permits

Date	2005		2006		2007		2008	
	Unadj.	Adj.	Unadj.	Adj.	Unadj.	Adj.	Unadj.	Adj.
Jan	1,458	1,765	1,592	1,839	1,084	1,216	803 R	885 R
Feb	1,611	2,029	1,301	1,641	953	1,200	662 R	794 R
Mar	2,104	1,965	1,766	1,644	1,137	1,104	808 R	821 R
Apr	1,952	2,038	1,457	1,562	1,109	1,137	1,009 R	1,004 R
May	1,963	1,859	1,674	1,539	1,264	1,140	816 R	759 R
Jun	1,934	1,616	1,635	1,356	1,328	1,158	753	650
Jul	1,966	1,895	1,626	1,577	1,183	1,104	780	699
Aug	2,159	1,890	1,536	1,321	1,552	1,324	762	701
Sep	1,888	1,839	1,184	1,223	901	966	741 R	751 R
Oct	1,907	1,848	1,254	1,185	937	873	802 R	735 R
Nov	1,727	1,829	1,073	1,121	879	917	492	558
Dec	1,607	1,833	1,032	1,221	750	891		

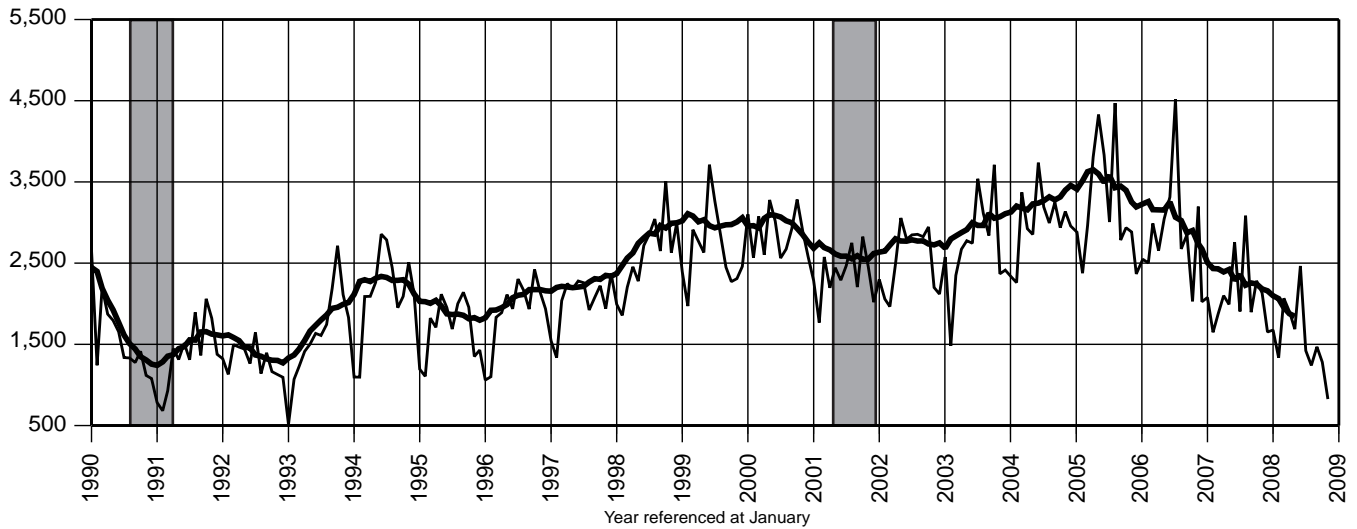
24. Private Multi-Dwelling Units Authorized by Building Permits

(Seasonality not statistically significant)

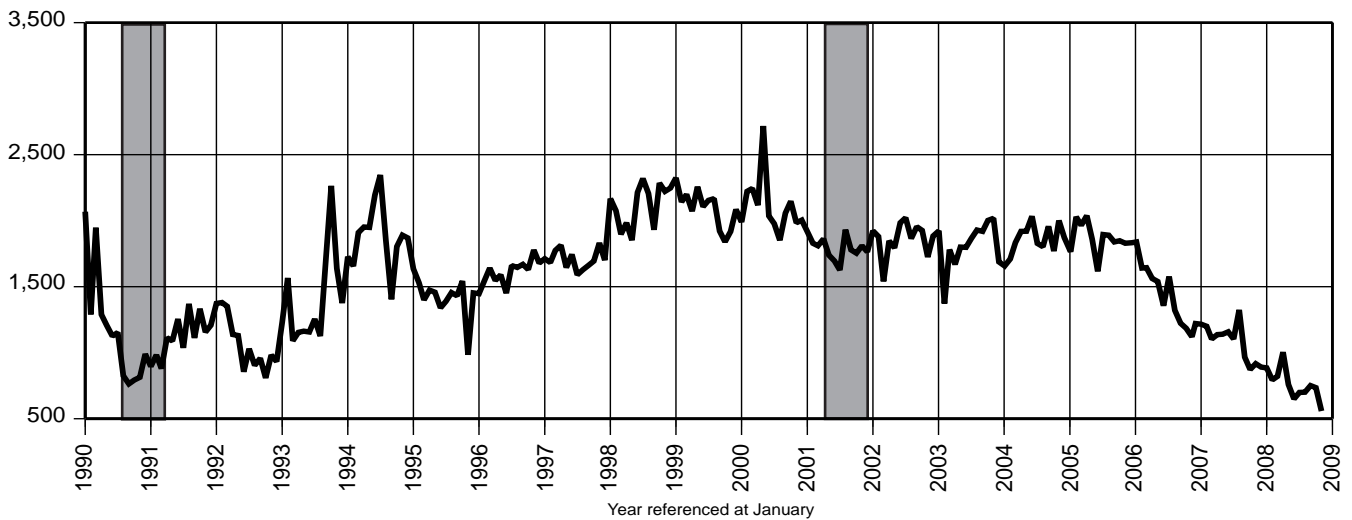
Date	2005	2006	2007	2008
	Unadj.	Unadj.	Unadj.	Unadj.
Jan	1,108	471	759	750
Feb	544	924	379	571
Mar	462	694	514	1,164
Apr	1,379	876	767	668 R
May	1,940	950	527	779
Jun	1,369	1,195	1,137	1,607
Jul	642	2,250	509	547
Aug	1,931	814	1,184	438
Sep	529	1,306	821	656
Oct	589	371	1,013	407 R
Nov	763	1,844	1,055	294
Dec	450	719	655	

22. Total Private Dwelling Units Authorized by Building Permits

(With 12 month moving average)

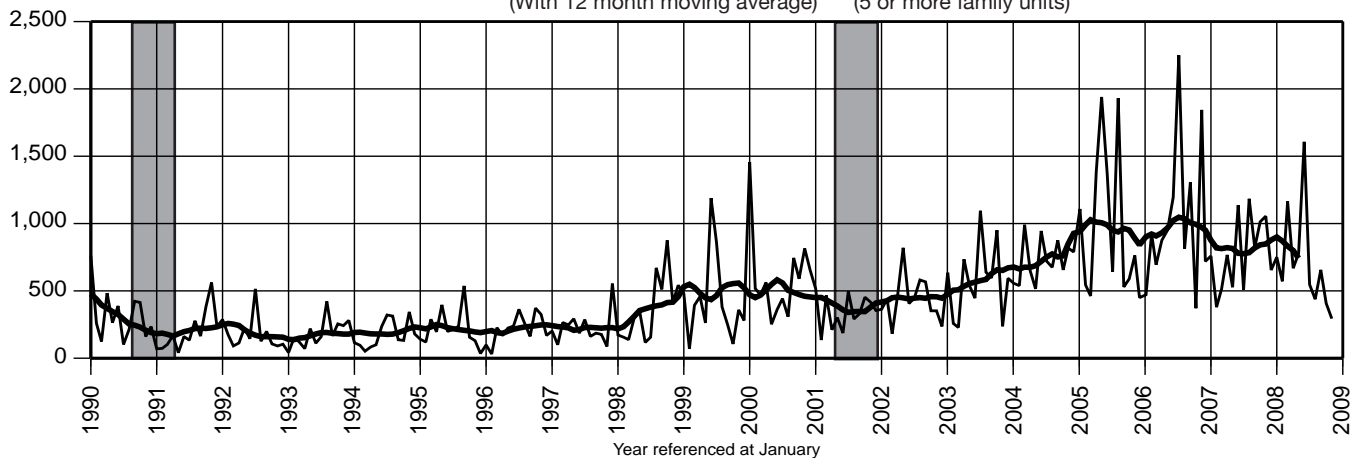


23. Private Single-Family Dwelling Units Authorized by Building Permits



24. Private Multi-Dwelling Units Authorized by Building Permits

(With 12 month moving average) (5 or more family units)



You're viewing an archived copy from the New Jersey State Library

Indicator Series 25-27 Vehicle Registrations

25. Total New Vehicle Registrations *

Date	2005		2006		2007		2008	
	Unadj.	Adj.	Unadj.	Adj.	Unadj.	Adj.	Unadj.	Adj.
Jan	44,021	53,436	41,772	50,882	41,273	50,172	42,844R	51,972R
Feb	44,480	51,077	45,584	52,398	43,966	50,351	44,478R	50,939R
Mar	48,982	44,755	56,014	51,447	53,249	49,078	53,405R	49,344R
Apr	61,458	57,824	51,459	47,938	54,747	51,107	49,315R	45,904R
May	55,821	48,680	59,073	51,451	60,346	52,677	54,621R	47,515R
Jun	61,951	55,671	55,134	49,488	53,686	48,140	51,431R	46,089R
Jul	63,318	58,696	55,377	50,886	55,701	50,871	47,846R	43,529R
Aug	57,416	52,589	56,929	51,812	56,233	51,123	48,430R	43,999R
Sep	47,272	48,389	45,923	47,783	48,643	51,069	41,546 R	43,818 R
Oct	43,308	47,278	46,191	50,366	47,303R	51,364R	33,942 R	36,879 R
Nov	45,419	51,032	43,940	49,427	45,582R	51,474R	27,859	31,513
Dec	48,023	51,689	48,275	51,748	47,245R	50,534R		

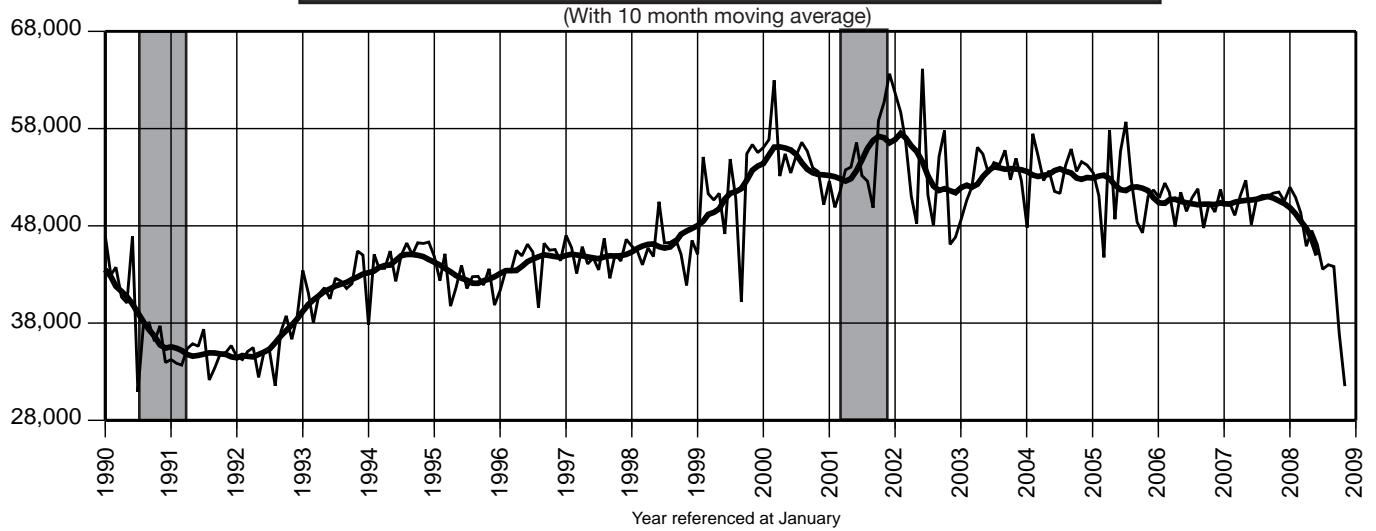
26. New Passenger Car Registrations

Date	2005		2006		2007		2008	
	Unadj.	Adj.	Unadj.	Adj.	Unadj.	Adj.	Unadj.	Adj.
Jan	21,826	26,568	21,401	26,194	21,644	26,595	21,740R	26,760R
Feb	21,283	25,365	22,890	27,321	22,089	26,295	23,505R	27,922R
Mar	24,946	22,457	29,499	26,714	28,814	26,196	30,451R	27,800R
Apr	31,814	29,046	29,158	26,423	29,977	27,117	28,405R	25,618R
May	28,982	24,713	32,664	27,750	33,583	28,493	33,170R	28,086R
Jun	30,421	26,333	29,891	26,058	29,219	25,523	30,238R	26,508R
Jul	29,165	26,936	29,260	26,784	29,372	26,769	28,503R	25,915R
Aug	29,540	26,874	29,876	27,094	29,281	26,562	28,018R	25,428R
Sep	25,622	26,572	23,999	25,252	25,142	26,644	23,304	24,724
Oct	23,160	25,813	23,406	26,114	24,202	26,891	19,332R	21,446R
Nov	23,722	26,975	22,517	25,545	24,277	27,610	15,375	17,497
Dec	23,902	26,950	24,301	27,217	23,636R	26,387R		

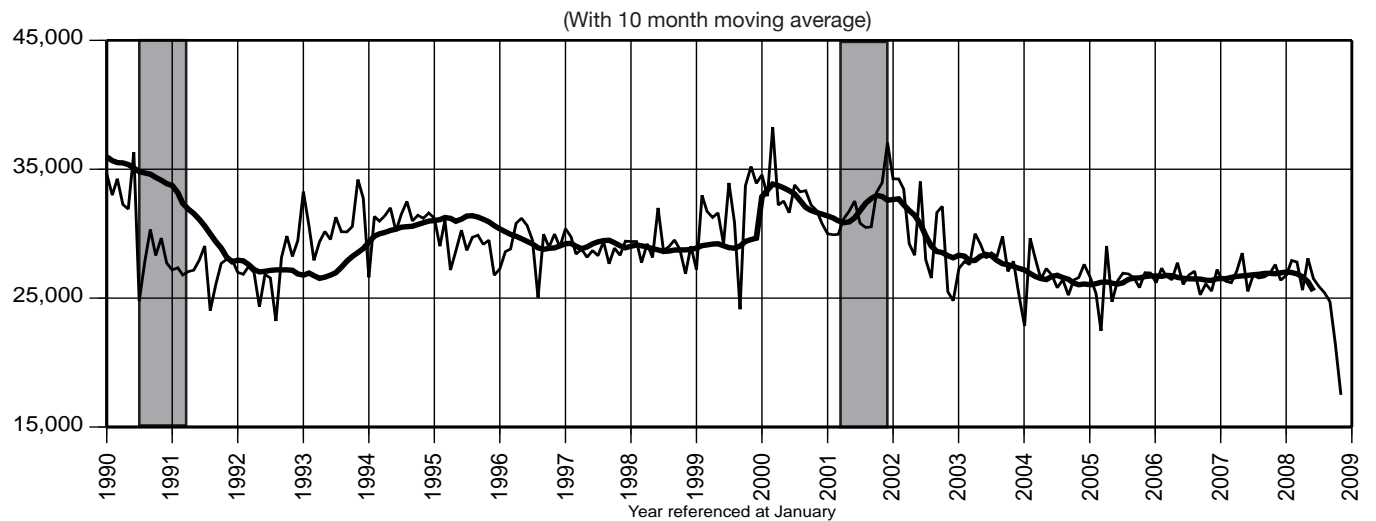
27. New Light Truck/Van Registrations

Date	2005		2006		2007		2008	
	Unadj.	Adj.	Unadj.	Adj.	Unadj.	Adj.	Unadj.	Adj.
Jan	22,195	26,869	20,371	24,688	19,629	23,578	21,104R	25,212R
Feb	23,197	25,712	22,694	25,077	21,877	24,056	20,973	23,017
Mar	24,036	22,297	26,515	24,733	24,435	22,882	22,954R	21,544R
Apr	29,644	28,778	22,301	21,515	24,770	23,990	20,910R	20,286R
May	26,839	23,967	26,409	23,700	26,763	24,184	21,451R	19,429R
Jun	31,530	29,339	25,243	23,430	24,467	22,617	21,193R	19,581R
Jul	34,153	31,760	26,117	24,103	26,329	24,102	19,343R	17,614R
Aug	27,876	25,715	27,053	24,718	26,952	24,561	20,412R	18,571R
Sep	21,650	21,817	21,924	22,530	23,501	24,424	18,242R	19,094R
Oct	20,148	21,465	22,785	24,252	23,101R	24,473R	14,610R	15,433R
Nov	21,697	24,057	21,423	23,882	21,305R	23,864R	12,484	14,016
Dec	24,121	24,738	23,974	24,531	23,608R	24,147R		

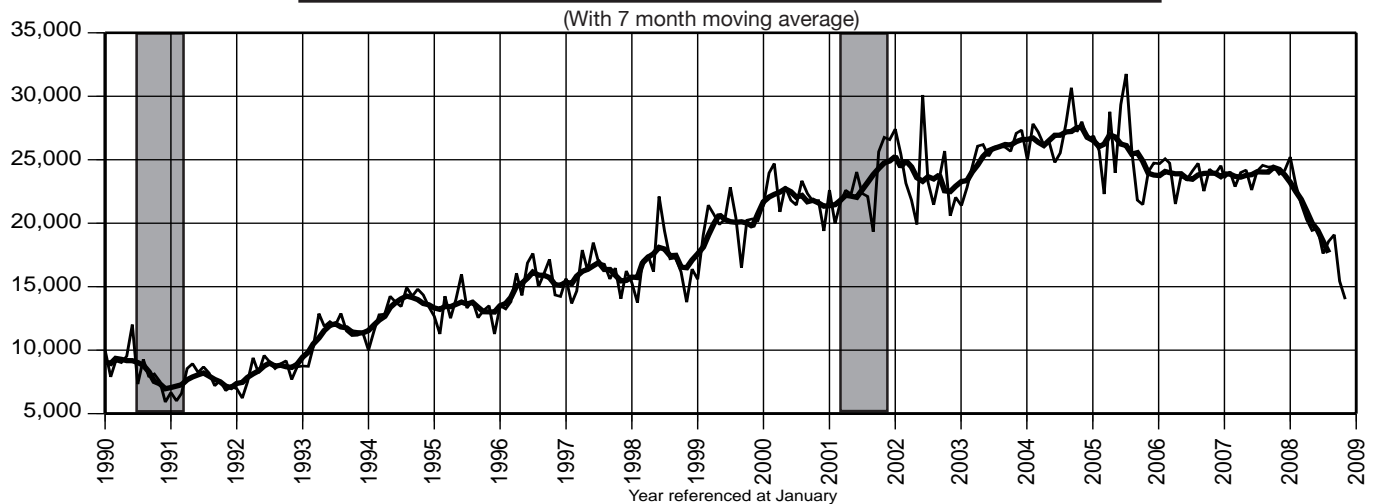
25. Total New Vehicle Registrations*



26. New Passenger Car Registrations



27. New Light Truck/Van Registrations



*Includes only new passenger car and light truck/van registrations

28. Weeks Claimed & Insured Unemployment Rate

Date	2005		2006		2007		2008	
	WA	IUR	WA	IUR	WA	IUR	WA	IUR
Jan	116.2	3.1	108.5	2.8	109.5	2.8	116.2	3.0
Feb	117.0	3.1	105.8	2.8	111.3	2.9	114.4	2.9
Mar	117.0	3.1	105.2	2.7	112.0	2.9	117.3	3.0
Apr	113.0	3.0	104.9	2.7	112.6	2.9	119.2	3.1
May	113.3	3.0	105.7	2.7	112.2	2.9	124.8	3.2
Jun	112.6	3.0	105.1	2.7	110.0	2.8	124.9	3.2
Jul	112.3	2.9	111.1	2.9	112.5	2.9	126.5	3.2
Aug	111.6	2.9	109.9	2.8	111.6	2.9	129.8	3.3
Sep	110.0	2.9	110.1	2.9	111.5	2.9	139.0	3.6
Oct	110.4	2.9	108.7	2.8	112.6	2.9	149.7	3.8
Nov	108.6	2.8	110.1	2.8	113.5	2.9	160.9	4.1
Dec	109.1	2.9	109.4	2.8	114.7	2.9	168.9	4.3

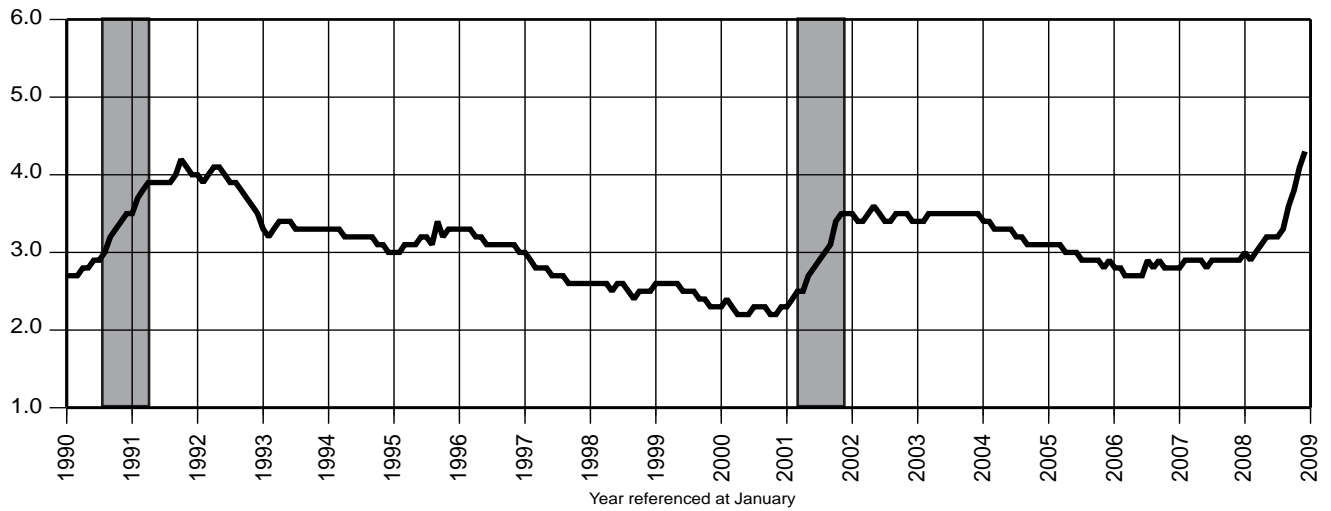
29. Initial Claims-Weekly Average

Date	2005		2006		2007		2008	
	Unadj.	Adj.	Unadj.	Adj.	Unadj.	Adj.	Unadj.	Adj.
Jan	14,797	10,886	13,034	9,519	13,850	10,244	13,768	10,214
Feb	10,123	10,290	9,451	9,664	10,515	10,784	10,184	10,138
Mar	9,390	11,315	7,927	9,743	8,609	10,516	10,260	12,564
Apr	9,334	9,156	10,564	10,332	11,080	10,639	10,163	9,891
May	8,020	10,253	7,638	9,975	8,087	10,627	8,653	11,387
Jun	12,260	10,325	12,675	10,464	12,320	10,272	13,684	11,228
Jul	9,826	10,214	10,521	10,746	10,299	10,403	10,839	11,081
Aug	8,231	10,029	8,617	10,483	8,600	10,557	9,691	11,920
Sep	7,885	10,035	7,736	10,056	8,138	10,643	10,258	13,072
Oct	9,212	10,960	8,535	10,045	9,136	10,850	11,748	14,118
Nov	9,881	9,864	10,883	10,720	11,304	10,932	16,083	15,746
Dec	14,921	10,507	13,813	9,889	14,785	10,474	17,301	12,272

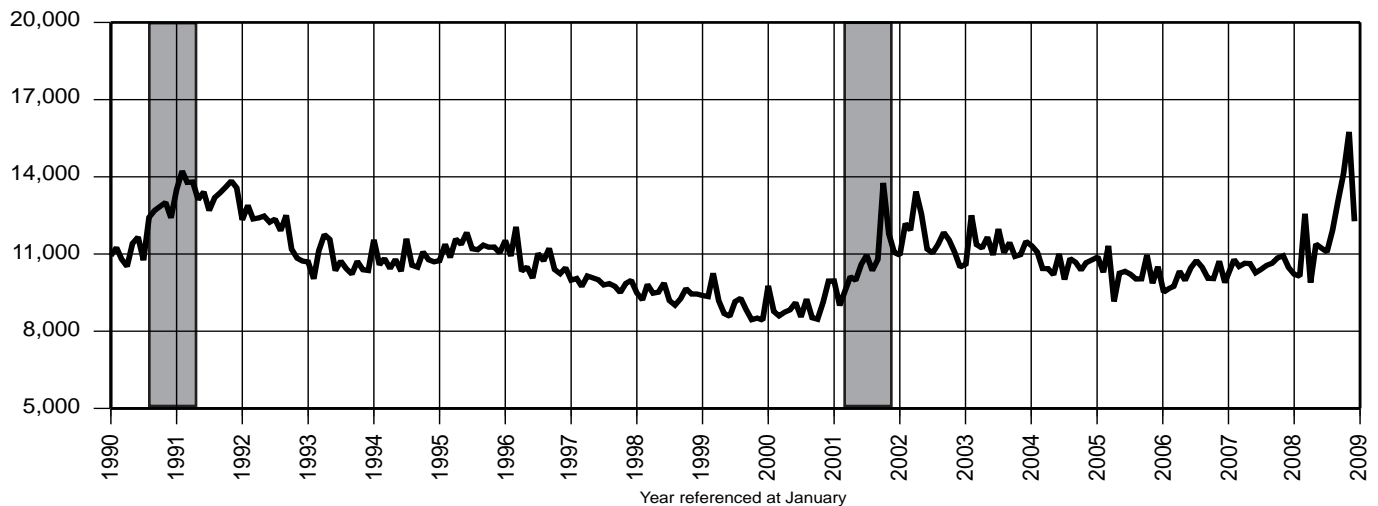
30. Unemployment Insurance Exhaustions

Date	2005	2006	2007	2008
	Unadj.	Unadj.	Unadj.	Unadj.
Jan	13,490	13,638	13,845	12,987
Feb	11,462	10,404	10,443	10,694
Mar	13,935	11,647	11,335	13,131
Apr	12,398	11,352	12,919	13,650
May	13,358	12,753	12,807	11,961
Jun	11,448	10,096	10,064	12,531
Jul	12,686	12,361	13,085	14,466
Aug	13,102	10,841	10,486	12,481
Sep	9,837	9,439	10,014	14,953
Oct	11,763	11,752	12,248	13,695
Nov	11,598	9,862	9,909	13,103
Dec	11,072	10,409	11,961	18,460

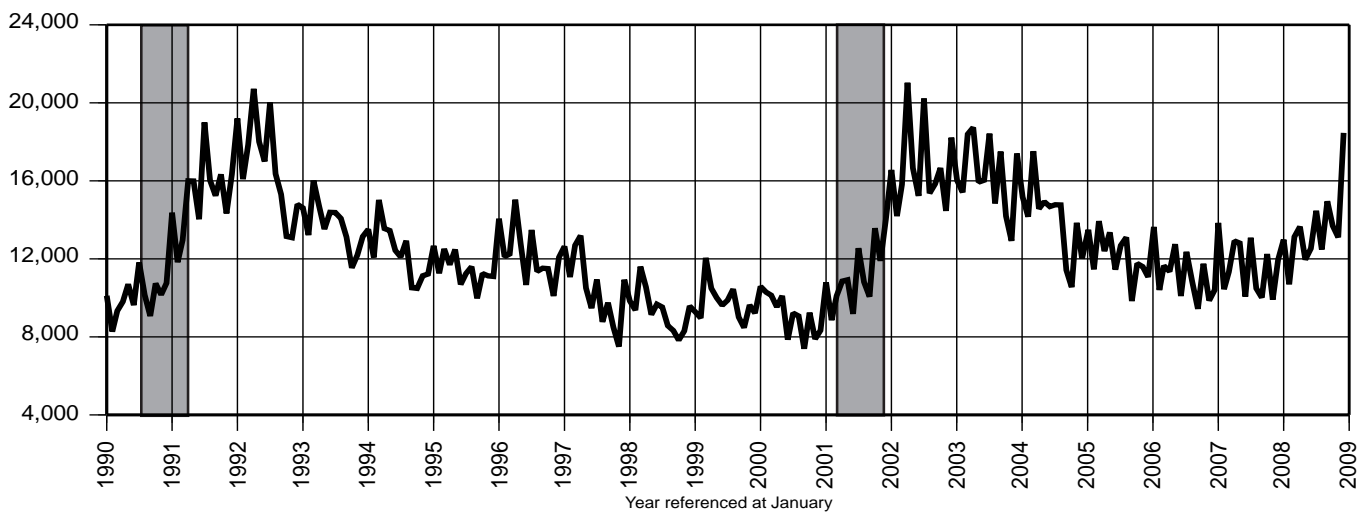
28. Insured Unemployment Rate



29. Initial Claims-Weekly Average



30. Unemployment Insurance Exhaustions



Indicator Series 1 to 30**Annual Averages 1997 - 2007 (000)**

Indicator Series	1997	1998	1999	2000	2001	2002	2003	2004	2005	2006	2007
1 Civilian Labor Force (000)	4,257.4	4,242.4	4,284.6	4,287.8	4,302.3	4,370.8	4,363.9	4,373.0	4,431.6	4,492.8	4,466.3
2 Resident Employment (000)	4,031.0	4,047.1	4,092.7	4,130.3	4,117.5	4,117.3	4,108.4	4,157.5	4,232.9	4,283.6	4,276.6
3 Resident Unemployment (000)	226.4	195.3	191.8	157.5	184.8	253.5	255.5	215.5	198.7	209.2	189.7
4 Labor Force Particip. Rate (%)	67.6	66.8	67.0	66.6	66.2	66.7	66.1	65.8	66.4	66.9	66.2
5 Employment/Pop. Rate (%)	64.0	63.7	64.0	64.1	66.3	62.6	62.2	62.6	63.4	63.8	63.4
6 Unemployment Rate (%)	5.3	4.6	4.5	3.7	4.3	5.8	5.9	4.9	4.5	4.7	4.2
7 Nonfarm Payroll Emp. (000)	3,724.5	3,801.3	3,901.1	3,994.5	3,997.2	3,983.9	3,978.8	3,999.1	4,039.1	4,071.0	4,073.8
8 Priv. Sec. Nonfarm Emp. (000)	3,154.3	3,229.6	3,323.5	3,405.7	3,394.6	3,370.4	3,356.9	3,365.7	3,397.5	3,423.7	3,425.6
9 Construction Emp. (000)	131.8	136.1	143.6	149.6	158.8	162.6	160.5	165.9	169.1	175.0	171.5
10 Manufacturing Emp. (000)	435.4	429.4	422.5	421.6	401.2	367.5	350.4	338.2	330.4	323.9	312.9
11 Trade, Transportation and Utilities Emp. (000)	834.6	847.6	873.7	899.0	890.7	881.4	876.2	874.7	877.3	876.0	876.3
12 Information Emp. (000)	122.5	118.9	123.0	126.9	126.4	113.2	102.0	98.0	97.1	97.4	97.9
13 Financial Activities Emp. (000)	238.2	248.7	260.8	266.9	269.8	276.7	276.2	276.9	279.7	279.4	274.7
14 Professional and Business Services Emp. (000)	522.4	554.0	579.1	598.5	592.5	581.1	578.2	584.5	592.5	602.7	608.1
15 Education and Health Services Emp. (000)	451.8	466.1	480.9	495.8	505.4	527.1	538.0	546.4	558.4	568.6	579.6
16 Leisure & Hospitality Emp. (000)	286.2	294.2	300.0	303.3	304.2	311.0	321.4	325.5	333.4	338.6	339.5
17 CPI-U for the US ('82-'84=100)	160.5	163.0	166.6	172.2	177.1	179.9	184.0	188.9	195.3	201.6	207.3
18 Mid-Atl. Consumer Conf. Index	89.1	108.6	108.6	125.1	95.8	84.0	68.7	80.4	80.3	87.0	88.8
19 Total Const. Contracts (\$Mil.)	697.6	746.0	800.6	911.7	954.2	952.2	984.0	932.4	1,199.1	1,137.7	1,008.9
20 Resid. Const. Contracts (\$Mil.)	218.8	284.1	309.4	319.9	323.8	327.2	369.8	412.0	498.8	462.1	336.9
21 Nonres. Const. Contracts (\$Mil.)	301.5	352.5	382.5	439.5	418.1	409.9	425.4	361.6	478.5	420.5	390.9
22 Total Dwelling Units (No.) - F	2,335	2,612	2,665	2,880	2,356	2,538	2,715	2,995	3,219	2,862	2,117
23 Single-Fam. Dwell. Units (No.) - F	1,956	2,122	2,094	2,103	1,793	1,864	1,820	1,870	1,856	1,428	1,090
24 Multi-Fam. Dwell. Units (No.) - F	276	374	424	515	347	435	580	728	976	1,035	777
25 Tot. New Vehicle Regis. (No.)	44,797	45,884	50,990	55,301	54,624	53,865	53,584	53,510	51,784	50,473	50,664
26 New Passenger Car Regis. (No.)	28,748	29,047	31,201	33,120	31,667	30,183	28,149	26,631	26,199	26,572	26,770
27 New Lt. Truck/Van Regis. (No.)	16,049	16,837	19,790	22,182	22,957	23,683	25,435	26,879	25,591	23,901	23,895
28 Wks. Claimed Wkly. Avg. (000)	95.3	90.2	90.8	84.3	108.4	132.4	130.9	122.6	112.9	107.9	112.0
Insured Unemp. Rate (%)	2.8	2.6	2.5	2.3	2.9	3.5	3.5	3.2	3.0	2.8	2.9
29 Initial Claims Wkly. Avg. (No.)	9,911	9,454	9,003	9,056	10,637	11,595	11,331	10,730	10,323	10,116	10,560
30 Exhaustions (No.)	104,197	9,360	9,757	9,138	11,136	16,686	16,317	14,034	12,179	11,213	11,593

Notes: See page S-32 for data sources. Data shown using latest available benchmarks. For Dwelling Unit data, "F" = Final. Monthly revisions to Series 19-21 are published by special contract with McGraw-Hill Construction; reprinting is prohibited by law.

Employment Data

New Jersey Nonfarm Payroll Employment (000) (seasonally adjusted)

NAICS Industry	2007	2008											
	Dec	Jan	Feb	Mar	Apr	May	Jun	Jul	Aug	Sep	Oct	Nov	Dec
Total Nonfarm (1)*	4,082.6	4,074.0	4,071.9	4,071.7	4,071.6	4,072.6	4,068.7	4,068.8	4,065.4	4,061.4	4,054.4	4,034.8	4,019.6
Total Private Sector*	3,433.8	3,425.5	3,423.0	3,422.9	3,423.0	3,423.6	3,419.4	3,419.9	3,418.8	3,414.9	3,407.7	3,388.6	3,374.0
Goods Producing*	481.4	480.6	479.1	477.9	475.5	473.6	470.4	470.7	470.3	468.1	465.6	461.3	456.3
Natural Resources and Mining**	1.6	1.6	1.5	1.6	1.7	1.7	1.7	1.7	1.7	1.7	1.7	1.7	1.6
Construction	170.1	169.3	168.9	168.0	166.9	167.3	166.8	166.9	167.0	166.5	166.2	163.9	160.9
Manufacturing*	309.7	309.7	308.7	308.3	306.9	304.6	301.9	302.1	301.6	299.9	297.7	295.7	293.8
Durable Goods	137.3	137.7	136.6	136.4	135.5	134.4	132.8	132.6	132.8	131.6	130.5	128.9	127.1
Non-Durable Goods	172.4	172.0	172.1	171.9	171.4	170.2	169.1	169.5	168.8	168.3	167.2	166.8	166.7
Service-Providing*	3,601.2	3,593.4	3,592.8	3,593.8	3,596.1	3,599.0	3,598.3	3,598.1	3,595.1	3,593.3	3,588.8	3,573.5	3,563.3
Private Service-Providing*	2,952.4	2,944.9	2,943.9	2,945.0	2,947.5	2,950.0	2,949.0	2,949.2	2,948.5	2,946.8	2,942.1	2,927.3	2,917.7
Trade, Transportation, & Utilities*	879.9	877.3	874.2	874.7	873.3	873.8	873.0	872.9	872.9	872.8	870.1	866.3	861.8
Wholesale Trade	232.9	232.1	231.3	231.1	230.4	230.9	231.4	231.7	231.1	230.5	230.1	230.6	229.6
Retail Trade	467.8	466.5	464.9	465.7	464.6	465.0	464.5	463.8	464.1	464.0	462.7	459.6	455.8
Trans., Warehousing, and Utilities	179.2	178.7	178.0	177.9	178.3	177.9	177.1	177.4	177.7	179.3	177.3	176.1	176.4
Information	98.3	98.7	97.8	97.6	98.5	98.5	98.6	98.7	99.2	98.6	98.4	97.3	97.1
Financial Activities*	270.2	269.3	269.2	269.4	268.5	267.8	267.8	266.3	266.2	264.4	263.5	262.9	262.7
Finance and Insurance	211.9	211.8	211.7	211.7	211.1	210.2	209.9	209.1	208.6	207.1	206.1	205.0	204.9
Real Estate/Rental & Leasing	58.3	57.5	57.5	57.7	57.4	57.6	57.9	57.2	57.6	57.3	57.4	57.9	57.8
Prof. and Business Services*	612.8	609.0	609.5	608.9	611.7	613.3	612.7	616.4	615.7	615.9	616.0	610.5	605.5
Prof., Sci., & Tech. Services	288.2	288.4	288.9	288.7	289.3	289.8	289.7	290.9	289.5	288.9	290.6	289.1	288.6
Mgmt. of Companies & Enterprises	66.6	66.1	66.1	66.3	65.8	65.8	65.9	66.0	66.3	66.4	67.0	66.5	66.3
Adm/Support, Waste Mgt/ Remed. Svs.	258.0	254.5	254.5	253.9	256.6	257.7	257.1	259.5	259.9	260.6	258.4	254.9	250.6
Educational and Health Services*	585.9	586.5	587.9	588.4	590.0	590.9	591.2	590.3	590.9	591.8	592.9	592.2	591.0
Educational Services	90.1	90.5	90.2	90.0	90.6	89.8	90.0	90.0	89.6	89.5	90.3	90.0	90.3
Health Care and Social Assistance	495.8	496.0	497.7	498.4	499.4	501.1	501.2	500.3	501.3	502.3	502.6	502.9	500.7
Leisure and Hospitality*	340.8	339.3	340.1	341.0	340.1	340.0	339.8	338.5	337.8	337.9	336.0	334.5	335.8
Arts, Entertainment, & Recreation	52.3	51.8	51.6	51.7	51.6	51.6	51.2	51.5	51.4	50.5	49.9	49.8	51.2
Accommodation and Food Svs.	288.5	287.5	288.5	289.3	288.5	288.4	288.6	287.0	286.4	287.4	286.1	284.7	284.6
Other Services (2)	164.5	164.8	165.2	165.0	165.4	165.7	165.9	166.1	165.8	165.4	165.2	162.9	163.8
Total Government*	648.8	648.5	648.9	648.8	648.6	649.0	649.3	648.9	646.6	646.5	646.7	646.2	645.6
Federal Government	60.3	60.1	60.0	60.1	60.1	60.2	59.8	60.0	59.5	59.2	59.9	59.3	59.1
State Government (3)	153.3	153.6	153.8	153.4	153.5	153.6	153.8	153.5	151.8	152.2	151.8	151.2	149.4
Local Government	435.2	434.8	435.1	435.3	435.0	435.2	435.7	435.4	435.3	435.1	435.0	435.7	437.1

Notes:

1. Nonfarm payroll employment includes civilians on nonfarm establishment payrolls who worked or received pay for any part of the pay period including the 12th of the month. It excludes proprietors, self-employed, unpaid family members and domestics in private households. All data are revised to March 2007 benchmarks. Individual series may not add to sector or supersector totals because not all sector/supersector components are published.
2. "Other Services" include: Repair and maintenance; Personal and laundry services; Religious, grantmaking, civic, professional and similar organizations.
3. The total number of state employees reported under this heading is determined on the basis of a definition developed by the US Bureau of Labor Statistics which is standardized throughout the nation. The definition includes both full- and part-time workers in the executive departments, the legislature, and the judiciary, as well as all employees of authorities, commissions, the state universities and colleges, and other agencies not included on the central payroll.

* Seasonally adjusted total has been indirectly computed from the sum of the underlying industries.

** The industry is not seasonally adjusted because seasonality is not statistically significant.

Employment Data

New Jersey Nonfarm Payroll Employment (000)

(not seasonally adjusted)

NAICS Industry	2007	2008											
	Dec	Jan	Feb	Mar	Apr	May	Jun	Jul	Aug	Sep	Oct	Nov	Dec
Total Nonfarm (1)	4,121.2	4,008.0	4,003.2	4,028.2	4,058.7	4,091.2	4,131.7	4,089.0	4,064.9	4,060.2	4,074.4	4,066.9	4,057.6
Total Private Sector	3,460.9	3,360.2	3,345.3	3,368.8	3,398.6	3,433.5	3,473.3	3,465.0	3,455.4	3,431.2	3,420.1	3,408.5	3,400.5
Goods Producing	484.0	467.5	462.4	466.1	472.1	475.5	478.1	477.5	478.0	475.4	471.3	466.3	458.8
Natural Resources and Mining	1.6	1.6	1.5	1.6	1.7	1.7	1.7	1.7	1.7	1.7	1.7	1.7	1.6
Construction	171.4	158.9	154.5	157.5	164.5	169.5	172.2	173.5	174.5	172.7	171.1	167.5	162.1
Construction of Buildings	41.4	39.7	39.0	39.9	40.4	41.0	41.8	42.3	42.4	42.1	42.0	41.1	41.3
Residential Building Construction	28.0	26.8	26.3	26.7	26.2	26.1	26.9	27.2	27.3	27.2	26.9	26.5	25.7
Heavy and Civil Engineering	17.4	15.0	14.2	14.6	16.4	17.2	17.5	17.8	17.8	17.7	17.4	16.8	15.7
Specialty Trade Contractors	112.6	104.2	101.3	103.0	107.7	111.3	112.9	113.4	114.3	112.9	111.7	109.6	105.1
Building Equipment Contractors	54.9	53.2	53.1	52.6	53.2	54.0	54.8	55.0	55.3	55.2	54.4	54.1	52.9
Manufacturing	311.0	307.0	306.4	307.0	305.9	304.3	304.2	302.3	301.8	301.0	298.5	297.1	295.1
Durable Goods	137.7	136.5	135.9	136.2	135.4	134.5	134.1	132.9	132.6	131.7	130.5	129.0	127.5
Fabricated Metal Product	27.2	26.7	26.5	26.7	26.6	26.8	27.0	26.7	26.7	26.8	26.7	26.4	26.2
Machinery Manufacturing	16.6	16.4	16.3	16.4	16.3	16.3	16.3	16.5	16.5	16.4	16.0	15.8	15.7
Computer and Electronic Products	29.9	30.2	30.2	30.3	30.3	30.3	30.7	30.5	30.6	30.4	30.6	30.4	30.3
Navig., Meas, Electromedical & Control Inst.	15.2	15.2	15.2	15.2	15.2	15.1	15.2	15.1	15.1	15.0	15.0	15.0	15.0
Transportation Equip. Mfg.	6.4	6.5	6.5	6.4	6.4	6.2	6.0	5.9	5.9	5.8	5.8	5.5	5.2
Miscellaneous Mfg.	19.4	19.2	19.5	19.6	19.6	19.5	19.5	19.5	19.4	19.5	19.5	20.0	19.2
Non-Durable Goods	173.3	170.5	170.5	170.8	170.5	169.8	170.1	169.4	169.2	169.3	168.0	168.1	167.6
Food Manufacturing	29.7	29.1	29.2	29.3	29.0	28.8	28.7	29.0	29.2	29.4	29.7	30.1	30.1
Paper Manufacturing	13.8	13.7	13.8	13.8	13.7	13.5	13.5	13.3	13.1	13.1	12.9	12.9	12.8
Printing and Related Support	22.4	21.5	21.2	21.1	21.2	21.1	21.1	20.9	20.6	20.5	20.5	20.4	20.2
Chemical Manufacturing	71.2	71.0	71.1	71.2	70.9	70.5	71.0	71.3	70.8	70.4	70.0	69.6	69.6
Basic Chemical Manufacturing	8.4	8.5	8.6	8.6	8.6	8.6	8.7	8.7	8.7	8.6	8.6	8.5	8.5
Pharmaceutical and Medicine	42.6	42.3	42.3	42.6	42.3	42.1	42.6	42.7	42.2	41.7	41.5	41.4	41.4
Plastics and Rubber Products	17.5	17.5	17.5	17.5	17.6	17.5	17.4	16.9	16.8	16.7	16.5	16.6	16.5
Service-Providing	3,637.2	3,540.5	3,540.8	3,562.1	3,586.6	3,615.7	3,653.6	3,611.5	3,586.9	3,584.8	3,603.1	3,600.6	3,598.8
Private Service-Providing	2,976.9	2,892.7	2,882.9	2,902.7	2,926.5	2,958.0	2,995.2	2,987.5	2,977.4	2,955.8	2,948.8	2,942.2	2,941.7
Trade, Transportation, & Utilities	908.2	870.3	858.6	861.9	863.2	871.4	879.6	871.4	868.4	871.0	874.3	882.9	889.3
Wholesale Trade	233.2	230.4	229.9	230.0	230.4	231.4	232.8	232.7	231.9	231.0	230.2	230.3	229.9
Merchant Wholesalers, Durable Goods	116.6	114.9	114.6	114.8	114.6	114.6	115.1	114.9	114.4	114.1	113.7	113.8	113.8
Professional & Comm. Equip., & Supplies	31.5	31.5	31.5	31.7	31.7	31.6	31.5	31.6	31.6	31.5	31.5	31.6	31.6
Grocery and Related Product - Nondurable Goods	29.2	29.1	29.0	29.0	29.3	29.5	29.9	29.9	29.8	29.9	29.8	29.9	29.8
Wholesale Electronic Markets, Agents and Brokers	32.6	32.3	32.3	32.4	32.6	33.0	33.1	33.2	33.3	33.0	32.8	33.0	32.9

See notes on page S-23. Shaded rows on pp. 24-27 indicate employment at the NAICS supersector level.

Employment Data

New Jersey Nonfarm Payroll Employment (000)

(not seasonally adjusted)

NAICS Industry	2007	2008											
	Dec	Jan	Feb	Mar	Apr	May	Jun	Jul	Aug	Sep	Oct	Nov	Dec
Retail Trade	491.8	463.1	451.9	454.4	455.5	461.2	467.7	466.2	465.1	460.1	463.3	473.0	479.0
Motor Vehicle and Parts Dealers	46.9	46.3	46.2	46.3	46.4	46.5	46.5	46.3	46.2	46.5	46.1	45.5	44.9
Automobile Dealers	34.1	33.8	33.8	33.9	34.1	34.1	34.3	34.2	34.2	34.4	34.0	33.7	33.5
Furniture and Home Furnishings Stores	20.2	19.1	18.6	18.5	18.3	18.4	18.5	18.1	18.2	18.3	18.6	19.5	19.9
Electronics and Appliance Stores	17.6	16.4	16.2	16.2	16.0	15.8	15.5	15.4	15.4	15.3	15.7	16.6	17.0
Building Mat. & Garden Equip. & Supp. Dlr.	34.8	32.9	32.8	33.7	35.6	37.0	37.1	36.2	35.7	34.8	34.7	34.3	34.0
Food and Beverage Stores	109.5	107.7	107.5	107.7	107.6	109.6	111.7	112.0	111.3	109.2	108.8	109.4	110.1
Health and Personal Care Stores	39.8	39.2	38.6	38.5	38.0	38.3	38.7	38.4	38.1	37.6	37.7	37.8	37.8
Clothing and Clothing Accessories Stores	67.1	60.1	56.6	56.9	57.3	58.3	59.7	60.0	60.4	59.2	59.4	62.8	66.3
Sporting Goods, Hobby, Book, & Music Stores	26.2	22.9	21.8	21.7	21.9	22.1	22.3	22.0	21.9	21.9	22.3	23.8	24.7
General Merchandise Stores	75.1	66.6	62.8	63.2	63.0	63.3	64.9	64.5	64.9	64.3	66.0	71.1	72.7
Department Stores	60.7	53.6	50.5	51.0	50.8	50.8	52.2	51.7	52.2	52.0	53.3	57.0	57.7
Transportation, Warehousing, and Utilities	183.2	176.8	176.8	177.5	177.3	178.8	179.1	172.5	171.4	179.9	180.8	179.6	180.4
Utilities	13.4	13.5	13.5	13.5	13.6	13.8	14.1	14.0	13.9	13.7	13.7	13.7	13.9
Elec.Pwr Gen., Transmission & Distribution	7.5	7.6	7.7	7.7	7.7	7.9	8.0	8.0	8.0	7.9	8.0	8.0	7.9
Natural Gas Distribution	3.7	3.7	3.7	3.7	3.7	3.7	3.8	3.7	3.7	3.7	3.7	3.7	3.7
Transportation and Warehousing	169.8	163.3	163.3	164.0	163.7	165.0	165.0	158.5	157.5	166.2	167.1	165.9	166.5
Air Transportation	18.1	18.2	18.2	18.2	18.2	18.5	18.6	18.6	18.6	18.5	18.6	18.6	18.7
Truck Transportation	39.7	38.8	38.6	38.9	38.9	39.1	39.0	39.0	39.0	39.1	38.8	38.9	39.1
General Freight Trucking	30.0	29.2	29.3	29.4	29.5	29.5	29.1	29.0	29.0	29.2	29.2	29.2	29.2
Transit and Ground Passenger Transportation	30.7	29.6	29.6	29.7	29.8	30.3	30.1	23.0	21.3	29.6	30.3	30.1	30.4
Support Activities for Transportation	22.1	21.6	21.6	21.6	21.7	21.7	21.9	21.9	21.9	21.8	21.8	21.6	21.7
Couriers and Messengers	26.4	23.6	23.6	23.9	23.6	23.6	23.7	23.6	23.4	23.4	23.1	23.0	24.0
Warehousing and Storage	28.1	27.7	27.7	27.9	27.3	27.8	27.9	27.7	27.9	27.8	28.0	28.1	27.9
Information	99.1	98.3	97.2	97.6	97.9	98.3	99.0	98.7	99.4	98.3	98.3	97.9	97.9
Publishing Industries (except Internet)	29.0	28.5	28.4	28.4	28.4	28.4	28.5	28.4	28.3	28.0	27.8	27.9	27.8
Telecommunications	41.8	41.6	40.9	41.3	41.4	41.8	41.8	41.5	41.9	41.6	42.0	41.9	42.2
Wired Telecommunications Carriers	32.6	32.6	32.0	32.1	32.4	32.8	32.8	32.5	32.7	32.7	33.1	32.9	32.6
Internet Serv. Prvdrs., Web Srch. Portals & D.P.S.	11.5	11.5	11.6	11.5	11.5	11.5	11.5	11.5	11.5	11.5	11.5	11.5	11.6
Financial Activities	270.5	267.9	267.4	267.7	267.4	267.7	269.8	268.8	268.4	264.1	263.1	262.5	263.0
Finance and Insurance	212.3	211.5	211.1	211.1	210.6	210.0	210.8	210.1	209.4	206.4	205.8	205.0	205.3
Credit Intermediation & Related Activities	73.7	73.2	73.1	72.9	72.5	72.2	72.1	72.6	72.1	70.8	70.2	69.5	69.7
Depository Credit Intermediation	50.4	50.4	50.1	50.1	50.0	50.0	50.3	50.8	50.7	50.2	50.0	49.8	49.9
Nondepository Credit Interditiion	17.8	17.6	17.6	17.6	17.2	17.0	16.6	16.4	16.0	15.5	15.4	15.3	14.9

See notes on page S-23. Shaded rows on pp. 24-27 indicate employment at the NAICS supersector level.

Employment Data

New Jersey Nonfarm Payroll Employment (000)

(not seasonally adjusted)

NAICS Industry	2007	2008											
	Dec	Jan	Feb	Mar	Apr	May	Jun	Jul	Aug	Sep	Oct	Nov	Dec
Securities, Commodity Contracts & Other	53.8	53.9	54.2	54.4	54.3	53.8	54.3	53.9	53.9	52.5	52.2	52.2	52.2
Scrt'y & Comdty Contracts Intermed & Brkrage	41.2	41.3	41.4	41.4	41.4	40.9	41.2	40.3	40.3	39.2	38.8	38.8	38.8
Ins. Carriers & Rel Activities	83.2	82.4	82.1	82.3	82.2	82.1	82.5	82.4	82.3	81.6	81.6	81.3	81.2
Insurance Carriers	52.7	52.0	51.9	52.0	51.9	51.9	52.1	52.3	52.2	51.8	51.8	51.6	51.4
Agencies, Brkrages, & other Ins. Rel. Activities	30.5	30.4	30.2	30.3	30.3	30.2	30.4	30.1	30.1	29.8	29.8	29.7	29.8
Real Estate/Rental & Leasing	58.2	56.4	56.3	56.6	56.8	57.7	59.0	58.7	59.0	57.7	57.3	57.5	57.7
Real Estate	39.6	38.6	38.6	38.8	38.9	39.4	40.2	40.1	40.2	39.6	39.7	39.9	39.8
Rental and Leasing Svcs.	17.8	17.2	17.1	17.3	17.5	17.9	18.3	18.2	18.1	17.8	17.6	17.6	17.7
Professional & Business Svcs.	614.5	593.0	593.5	600.5	610.7	614.7	620.6	623.5	624.5	622.3	620.6	614.7	607.2
Professional, Sci., & Tech. Svcs.	289.2	286.6	287.8	288.9	290.5	288.6	291.1	291.8	290.4	287.5	289.9	289.6	289.6
Legal Services	42.4	42.1	41.9	42.0	42.1	42.3	43.0	42.9	42.8	42.3	42.3	42.2	42.2
Accounting/Tax Prep/Bookkeep/ Payroll Services	34.8	36.1	37.2	37.0	36.6	33.4	33.4	33.4	33.8	33.5	33.4	33.6	34.8
Architectural, Engineering & Related Services	43.8	43.0	42.9	43.0	43.6	43.9	44.7	45.4	45.1	44.1	44.5	44.0	43.3
Computer Systems Design & Related Services	63.1	62.1	62.3	62.4	62.9	62.8	62.9	62.9	62.3	62.2	62.2	62.5	62.5
Management, Sci & Tech Consulting Services	34.4	33.4	33.3	33.4	33.5	33.6	34.0	34.5	34.8	35.0	35.1	35.6	35.9
Scientific Research & Development Services	29.2	29.0	28.8	28.8	28.7	28.8	29.0	29.0	28.9	28.2	28.3	28.2	28.5
Advertising and Related Services	16.9	16.5	16.6	16.8	16.7	16.6	16.5	16.4	16.3	16.2	16.3	16.3	15.9
Management of Companies and Enterprises	66.9	65.9	65.8	66.1	65.5	65.7	66.2	66.2	66.4	66.6	66.8	66.7	66.6
Adm/Support Waste Mgt/ Remediation Services	258.4	240.5	239.9	245.5	254.7	260.4	263.3	265.5	267.7	268.2	263.9	258.4	251.0
Employment Services	99.2	90.9	90.8	93.9	92.9	94.4	95.0	97.2	99.8	101.9	98.4	94.0	88.8
Business Support Services	16.9	16.7	16.8	16.8	16.9	17.0	16.9	16.6	16.6	16.6	16.5	16.7	17.2
Investigation & Security Svcs.	27.5	27.3	27.4	27.5	27.6	28.0	28.0	28.0	28.0	28.1	28.1	28.3	28.5
Svcs. to Buildings & Dwellings	60.3	52.5	52.2	55.4	65.3	68.9	71.2	71.7	70.8	69.1	67.7	66.3	60.2
Educational & Health Services	589.8	584.3	587.4	590.4	591.6	594.5	593.6	586.3	582.7	587.8	594.5	596.6	595.0
Educational Services	92.4	88.8	91.0	92.0	92.4	92.7	90.0	85.9	83.0	87.6	92.1	92.7	92.6
Elementary and Secondary Schools	38.0	37.8	38.1	38.0	38.1	38.2	38.2	35.1	33.8	37.2	37.9	38.2	38.0
Colleges, Universities, and Professional Schools	28.9	27.1	29.1	29.4	29.7	29.3	27.3	26.1	25.9	28.1	29.8	29.8	29.6
Health Care and Social Assistance	497.4	495.5	496.4	498.4	499.2	501.8	503.6	500.4	499.7	500.2	502.4	503.9	502.4
Ambulatory Health Care Svcs.	182.1	181.0	181.3	182.0	182.2	183.5	184.5	183.7	183.4	183.3	184.5	185.2	185.6
Offices of Physicians	68.8	68.2	68.1	68.3	68.4	68.9	69.4	69.3	69.3	69.0	69.3	69.6	70.1
Offices of Dentists	27.4	27.3	27.3	27.3	27.2	27.4	27.5	27.3	27.4	27.3	27.0	27.0	26.8
Home Health Care Services	30.2	29.8	30.1	30.2	30.2	30.4	30.6	30.4	30.5	30.8	30.9	31.0	31.3

See notes on page S-23. Shaded rows on pp. 24-27 indicate employment at the NAICS supersector level.

Employment Data

New Jersey Nonfarm Payroll Employment (000)

(not seasonally adjusted)

NAICS Industry	2007	2008											
	Dec	Jan	Feb	Mar	Apr	May	Jun	Jul	Aug	Sep	Oct	Nov	Dec
Hospitals	155.5	155.2	155.3	155.7	155.8	156.2	156.5	156.3	156.9	156.5	156.5	156.5	155.9
Nursing and Residential Care Facilities	83.9	83.5	83.7	84.0	84.2	84.5	84.7	84.3	84.4	84.3	84.5	84.9	84.1
Nursing Care Facilities	47.1	46.4	46.5	46.8	46.9	47.1	47.2	47.3	47.4	47.4	47.5	47.7	47.7
Community Care Facilities for the Elderly	18.4	18.5	18.4	18.5	18.4	18.4	18.5	18.6	18.5	18.4	18.3	18.5	18.4
Social Assistance	75.9	75.8	76.1	76.7	77.0	77.6	77.9	76.1	75.0	76.1	76.9	77.3	76.8
Child Day Care Services	37.6	37.3	37.6	37.9	38.0	38.3	38.2	36.2	35.2	37.3	37.9	38.0	38.3
Leisure and Hospitality	330.6	316.4	316.0	321.2	330.4	344.8	363.8	369.5	365.9	347.8	333.6	325.6	325.8
Arts, Entertainment, and Recreation	46.5	41.7	41.6	43.5	48.8	53.1	60.9	66.5	64.9	53.2	48.8	45.3	45.6
Amusement, Gambling & Recreation Industries	36.7	33.2	33.2	34.9	39.3	43.1	50.1	55.4	53.6	42.8	38.3	35.5	35.7
Accommodation and Food Services	284.1	274.7	274.4	277.7	281.6	291.7	302.9	303.0	301.0	294.6	284.8	280.3	280.2
Accommodation	64.2	62.3	62.0	62.3	62.9	64.8	68.0	72.2	71.8	67.8	64.6	62.8	62.0
Casino Hotels	38.1	37.9	37.8	38.0	37.7	38.3	39.7	41.4	41.2	40.5	39.1	38.4	37.3
Food Services and Drinking Places	219.9	212.4	212.4	215.4	218.7	226.9	234.9	230.8	229.2	226.8	220.2	217.5	218.2
Full-Service Restaurants	96.3	93.2	93.3	94.2	95.6	99.3	103.3	104.1	103.6	99.1	95.5	93.2	92.9
Limited-Service Eating Places	85.2	82.7	82.3	84.0	86.4	89.2	91.9	92.7	92.0	88.7	86.2	86.0	87.0
Special Food Services	29.3	27.7	28.0	28.3	27.7	29.0	29.4	23.6	23.2	29.1	29.2	29.0	29.0
Drinking Places (Alcoholic Beverages)	9.1	8.8	8.8	8.9	9.0	9.4	10.3	10.4	10.4	9.9	9.3	9.3	9.3
Other Services	164.2	162.5	162.8	163.4	165.3	166.6	168.8	169.3	168.1	164.5	164.4	162.0	163.5
Repair and Maintenance	37.7	37.5	37.7	37.7	37.5	37.7	37.7	37.8	37.6	37.6	37.1	37.1	36.9
Automotive Repair and Maintenance	27.1	26.8	26.9	26.9	26.8	26.9	26.9	27.0	26.7	26.6	26.3	26.3	25.9
Personal and Laundry Services	49.8	48.7	48.9	49.3	50.2	51.0	51.2	51.4	51.4	51.1	50.7	49.1	49.7
Personal Care Services	29.4	29.1	29.4	29.5	29.6	30.2	30.2	30.2	30.3	30.2	30.1	30.2	30.8
Religious, Grantmaking, Civic, Professional & Similar Orgs.	76.7	76.3	76.2	76.4	77.6	77.9	79.9	80.1	79.1	75.8	76.6	75.8	76.9
Government	660.3	647.8	657.9	659.4	660.1	657.7	658.4	624.0	609.5	629.0	654.3	658.4	657.1
Federal Government	60.8	59.8	59.5	59.5	59.8	60.0	60.1	60.6	60.1	59.4	59.8	59.2	59.6
Other Federal Government	17.6	17.3	17.3	17.3	17.5	17.8	17.9	18.1	18.1	17.8	17.8	17.8	17.9
Department of Defense	13.7	13.7	13.6	13.6	13.5	13.5	13.8	13.8	13.8	13.5	13.7	13.6	13.6
U.S. Postal Service	29.5	28.8	28.6	28.6	28.8	28.7	28.4	28.7	28.2	28.1	28.3	27.8	28.1
State Government	155.8	150.9	156.4	156.5	156.9	154.0	150.2	148.7	146.2	150.5	154.6	154.7	151.9
State Government Education	51.7	46.7	51.9	52.2	52.8	49.8	45.5	44.8	44.0	48.8	52.5	52.2	50.4
State Government Hospitals	12.2	12.3	12.2	12.2	12.1	12.0	11.9	11.9	11.9	11.9	12.1	12.2	12.3
Other State Government	91.9	91.9	92.3	92.1	92.0	92.2	92.8	92.0	90.3	89.8	90.0	90.3	89.2
Exec./Leg./Judicial *	79.2	79.4	79.5	79.6	79.3	79.3	79.4	78.9	77.4	77.1	77.1	76.9	76.8
Local Government	443.7	437.1	442.0	443.4	443.4	443.7	448.1	414.7	403.2	419.1	439.9	444.5	445.6
Local Government Education	275.5	270.8	276.1	277.1	276.5	275.2	274.2	230.2	220.9	247.2	273.6	277.9	279.0
Other Local Government	168.2	166.3	165.9	166.3	166.9	168.5	173.9	184.5	182.3	171.9	166.3	166.6	166.6

See notes on page S-23. Shaded rows on pp. 24-27 indicate employment at the NAICS supersector level.

Hours and Earnings Data

Production/Non-supervisory Workers in New Jersey

	2007	2008											
NAICS Industry	Dec	Jan	Feb	Mar	Apr	May	Jun	Jul	Aug	Sep	Oct	Nov	Dec
Average Weekly Hours of Production / Non-supervisory Workers ¹													
Manufacturing (production)	42.2	41.7	41.7	41.7	42.2	42.2	42.5	41.8	41.5	41.5	41.0	41.4	41.3
Durable Goods	42.1	41.7	41.9	42.1	42.4	42.6	42.9	42.5	42.2	41.8	41.2	41.8	41.2
Nondurable Goods	42.2	41.7	41.6	41.4	42.0	41.8	42.2	41.2	41.0	41.3	40.8	41.0	41.4
Information ⁴	34.7	34.4	34.6	35.1	34.6	34.5	35.2	34.5	34.3	34.7	34.5	34.5	34.9
Average Hourly Gross Dollar Earnings ²													
Manufacturing (production)	17.64	17.76	17.85	17.77	17.74	17.76	17.79	17.84	17.88	17.94	17.96	18.12	18.19
Durable Goods	19.72	19.68	19.94	19.80	19.75	19.69	19.74	19.68	19.88	19.93	20.15	20.26	20.42
Nondurable Goods	15.91	16.14	16.07	16.02	15.99	16.10	16.10	16.24	16.18	16.29	16.17	16.34	16.41
Information ⁴	32.33	32.27	32.32	32.48	32.57	32.67	32.75	31.53	31.52	31.38	30.97	31.23	30.61
Average Weekly Gross Dollar Earnings ³													
Manufacturing (production)	744.41	740.59	744.35	741.01	748.63	749.47	756.08	745.71	742.02	744.51	736.36	750.17	751.25
Durable Goods	830.21	820.66	835.49	833.58	837.40	838.79	846.85	836.40	838.94	833.07	830.18	846.87	841.30
Nondurable Goods	671.40	673.04	668.51	663.23	671.58	672.98	679.42	669.09	663.38	672.78	659.74	669.94	679.37
Information ⁴	1,121.85	1,110.09	1,118.27	1,140.05	1,126.92	1,127.12	1,152.80	1,087.79	1,081.14	1,088.89	1,068.47	1,077.44	1,068.29

* Eight manufacturing production series were deleted because these series failed to meet the criteria established by the Bureau of Labor Statistics and will no longer be published.

- (1) Average hours worked or paid are affected by labor turnover, changes in overtime hours and part-time employment.
- (2) Hourly earnings include paid holidays, vacation and sick leave. They are affected by changes in workforce composition and in wage rates.
- (3) Weekly earnings are affected by premium pay, shift differentials, piecework and incentive payments, length of workweek and other factors.
- (4) Non-supervisory workers. The Information Supersector includes the Publishing Industries, Telecommunications, and Internet Service Providers, Web Search Portal, and Data Processing Service Sectors.

Comparative Trends

US and New Jersey Civilian Labor Force Trends 1982-2008 (000)

DATE	Labor Force		Employment		Unemployment Volume		Unemployment Rate (%)	
	US	NJ	US	NJ	US	NJ	US	NJ
Annual Averages 1982-2007								
1982	110,204	3,629.2	99,526	3,314.5	10,678	314.7	9.7	8.7
1983	111,550	3,688.8	100,834	3,392.6	10,717	296.2	9.6	8.0
1984	113,544	3,795.1	105,005	3,560.9	8,539	234.2	7.5	6.2
1985	115,461	3,839.5	107,150	3,624.4	8,312	215.1	7.2	5.6
1986	117,834	3,903.5	109,597	3,706.5	8,237	197.0	7.0	5.0
1987	119,865	3,959.8	112,440	3,798.5	7,425	161.3	6.2	4.1
1988	121,669	3,973.5	114,968	3,821.8	6,701	151.6	5.5	3.8
1989	123,869	4,000.0	117,342	3,835.3	6,528	164.7	5.3	4.1
1990	125,840	4,072.5	118,793	3,865.0	7,047	207.5	5.6	5.1
1991	126,346	4,050.4	117,718	3,776.6	8,628	273.7	6.8	6.8
1992	128,105	4,051.9	118,492	3,709.5	9,613	342.4	7.5	8.4
1993	129,200	4,034.6	120,259	3,727.3	8,940	307.3	6.9	7.6
1994	131,056	4,067.5	123,060	3,790.0	7,996	277.5	6.1	6.8
1995	132,304	4,111.8	124,900	3,846.3	7,404	265.5	5.6	6.5
1996	133,943	4,184.1	126,708	3,925.8	7,236	258.3	5.4	6.2
1997	136,297	4,257.4	129,558	4,031.0	6,739	226.4	4.9	5.3
1998	137,673	4,242.4	131,463	4,047.1	6,210	195.3	4.5	4.6
1999	139,368	4,284.6	133,488	4,092.7	5,880	191.8	4.2	4.5
2000	142,583	4,287.8	136,891	4,130.3	5,692	157.5	4.0	3.7
2001	143,734	4,302.3	136,933	4,117.5	6,801	184.8	4.7	4.3
2002	144,863	4,370.8	136,485	4,117.3	8,378	253.5	5.8	5.8
2003	146,510	4,363.9	137,736	4,108.4	8,774	255.5	6.0	5.9
2004	147,401	4,373.0	139,252	4,157.5	8,149	215.5	5.5	4.9
2005	149,320	4,431.6	141,730	4,232.8	7,591	198.7	5.1	4.5
2006	151,428	4,492.8	144,427	4,283.6	7,001	209.2	4.6	4.7
2007	153,124	4,466.3	146,047	4,276.6	7,078	189.7	4.6	4.2

Monthly Data 2007-2008 (Seasonally Adjusted) *

2007								
Jan	152,958	4,477.1	145,915	4,285.3	7,043	191.8	4.6	4.3
Feb	152,725	4,474.0	145,888	4,281.4	6,837	192.6	4.5	4.3
Mar	152,884	4,469.0	146,145	4,275.5	6,738	193.6	4.4	4.3
Apr	152,542	4,468.1	145,713	4,275.0	6,829	193.1	4.5	4.3
May	152,776	4,466.1	145,913	4,275.8	6,863	190.3	4.5	4.3
Jun	153,085	4,467.6	146,087	4,278.4	6,997	189.3	4.6	4.2
Jul	153,182	4,463.7	146,045	4,274.3	7,137	189.4	4.7	4.2
Aug	152,886	4,462.0	145,753	4,274.2	7,133	187.7	4.7	4.2
Sep	153,506	4,461.0	146,260	4,273.8	7,246	187.2	4.7	4.2
Oct	153,306	4,460.3	146,016	4,274.8	7,291	185.5	4.8	4.2
Nov	153,828	4,462.6	146,647	4,274.6	7,181	188.1	4.7	4.2
Dec	153,836R	4,463.8	146,294R	4,275.8	7,541R	188.0	4.9R	4.2

2008								
Jan	153,824	4,491.2	146,248	4,287.1	7,576	204.1	4.9	4.5
Feb	153,374	4,507.7	145,993	4,291.3	7,381	216.3	4.8	4.8
Mar	153,784	4,495.3	145,969	4,278.2	7,815	217.1	5.1	4.8
Apr	153,957	4,511.9	146,331	4,288.6	7,626	223.3	5.0	4.9
May	154,534	4,516.8	146,046	4,273.9	8,487	242.9	5.5	5.4
Jun	154,390	4,505.0	145,891	4,267.4	8,499	237.6	5.5	5.3
Jul	154,603	4,505.6	145,819	4,260.1	8,784	245.5	5.7	5.4
Aug	154,853	4,525.5	145,477	4,258.1	9,376	267.4	6.1	5.9
Sep	154,732	4,540.2	145,255	4,276.1	9,477	264.1	6.1	5.8
Oct	154,878R	4,552.7	144,657R	4,278.7	10,221R	273.9	6.6R	6.0
Nov	154,620R	4,519.6R	144,144R	4,244.0R	10,476R	275.7R	6.8R	6.1
Dec	154,447	4,550.6	143,338	4,225.7	11,108	342.9	7.2	7.1

* New Jersey monthly data are based on a different estimating procedure. Monthly data have been revised to incorporate updated seasonal adjustment factors which reflect the 2007 experience.

Unemployment Insurance Program

Characteristics of New Jersey's Unemployed (000)

	December 2008	November 2008	December 2007	Percent Change From Month Ago	Year Ago
Total Insured Unemployed *	164.0	139.6	109.5	17.5	49.8
Total Insured Unemployed	168.6	156.3	112.6	7.9	49.8
By Gender					
Male	95.5	90.1	62.2	6.1	53.6
Female	70.2	64.1	49.9	9.5	40.8
By Race					
White	103.3	94.7	67.7	9.1	52.5
Black	31.6	29.3	23.4	8.2	35.3
Asian	5.7	4.9	3.0	15.5	89.8
Other	1.6	1.5	1.1	4.9	43.4
Chose not To Answer	24.9	21.2	16.8	17.9	48.8
By Ethnicity					
Hispanic	32.9	29.7	21.5	10.8	53.5
Not Hispanic	119.7	108.7	81.6	10.1	46.6
Chose not to Answer	13.7	11.2	8.7	22.5	58.0
By Age of Claimant					
Under 25	15.4	14.4	10.2	6.8	51.5
25 through 34 years	38.7	35.3	25.7	9.6	50.2
35 through 44 years	38.3	35.6	27.1	7.6	41.7
45 through 54 years	40.3	37.0	26.6	8.9	51.5
55 through 64 years	25.5	22.9	16.1	11.5	58.1
65 years and over	9.3	8.7	6.5	6.6	43.0
By Duration of Unemployment					
1 to 2 weeks	26.1	25.9	18.3	1.1	43.2
3 to 4 weeks	22.1	19.3	14.0	14.0	57.8
5 to 14 weeks	71.8	61.7	46.5	16.4	54.5
15 weeks and over	46.3	42.5	32.7	8.9	41.4
By Industry					
Goods Producing	34.3	31.7	23.2	8.2	47.7
Construction	18.9	18.3	14.0	3.0	35.2
Manufacturing	14.8	12.7	8.7	16.2	69.2
Service Providing	132.3	118.6	88.2	11.5	50.0
Trade, Transportation, Utilities	36.9	33.1	24.1	11.6	53.4
Wholesale Trade	9.3	8.2	6.2	13.5	49.8
Retail Trade	19.3	17.2	12.2	12.6	58.8
Transportation & Warehousing	8.1	7.5	5.5	6.8	46.0
Financial Activities	10.6	9.4	7.5	12.3	41.3
Professional & Business Services	28.4	25.5	19.0	11.5	49.4
Educational and Health Services	15.0	14.1	12.0	6.6	25.3
Leisure and Hospitality	14.0	13.0	10.7	7.3	30.9
Other Services	3.8	3.3	2.6	13.4	43.4
Government	2.1	2.1	1.9	0.3	14.1

Notes: Totals may not add due to seasonal adjustment, rounding and differences in the availability of data.

* Not seasonally adjusted

Statistical Section Notes

Adjustment of Data

Seasonal Adjustment. All tables/charts, unless otherwise specified, contain data that are seasonally adjusted using the **X-12 ARIMA** (Auto-Regressive Integrated Moving Average) method of seasonal adjustment developed by Statistics Canada.

The **X-12** procedure was used in a “two-step” process. One set of factors was generated for benchmarked estimates, based on absolute or universe counts of employment determined through Unemployment Insurance records. These factors were used to seasonally adjust historical, universe-based data through September 2007. A second set of factors was generated using the record of sample-based estimates, and applied to reprojected sample-based estimates for the last quarter of 2007 and sample-based estimates developed month by month in 2008.

Annual Revision and Internet Access

Annual revisions of the data series in *Economic Indicators* normally incorporate:

- (1) the latest benchmark — 2007 for the Resident Labor Force Indicators (Series 1-6) and 2007 for Establishment Employment Indicators (Series 7-16).
- (2) new seasonal adjustment factors, which usually affect at least five years of seasonally adjusted data, or the period from January 2003 forward.

Internet Access: Available on the Labor Planning & Analysis (LPA) Web site, <http://www.nj.gov/labor/lra>, are:

- (1) the current month's *Economic Indicators* issue. **NOTE:** McGraw Hill's monthly construction contract data (Series 19-21) ARE PROHIBITED BY LAW FROM ELECTRONIC DISTRIBUTION and, therefore, are not available via the LPA Web site.
- (2) historical series when available, January 1976 to December 2007. This includes the latest annual revisions to unadjusted nonfarm data (January 2006 to December 2007) and seasonal adjustment revisions (January 2003 to December 2007). Because revisions can affect various multi-year periods of original and seasonally adjusted data, it would be incorrect to generate a historic time series for *Economic Indicators* data by tying together series from old issues. For example, seasonally adjusted data from January 2004 to December 2008 are subject to change during the next annual revision cycle.

General Notes

Annual Averages. On p. S-22 are the annual averages of the of the data series for recent years to be used as a benchmark for evaluating current monthly data.

Charts. Unless otherwise noted, all graphs were developed with seasonally adjusted data.

Moving Averages. Series where the monthly data vary erratically have been plotted with moving averages (thick line) and nonaveraged data (thin line) superimposed.

Scales. The scale of each series is determined by the volume and trend of the data series. Caution should be exercised in making comparisons among charts of different scales.

Shaded Columns. Shaded areas indicate periods of general national contraction as identified by the National Bureau of Economic Research (NBER). The July 1990-March 1991 and the March 2001-November 2001 national recessions are shown in the graphs for Series 1-30.

Tables. Revised data are indicated by an “R” after the entry.

Statistical Section Notes (cont.)

Data Sources for Economic Time Series 1-30

No.	Title	Data Source
1	Civilian Labor Force	NJ Department of Labor and Workforce Development, Division of Labor Market and Demographic Research
2	Resident Employment	
3	Unemployment	
4	Labor Force Participation Rate	
5	Employment/Population Ratio	
6	Unemployment Rate	
7	Nonfarm Payroll Employment	
8	Private Sector Nonfarm Payroll Employment	
9	Construction Payroll Employment	
10	Manufacturing Payroll Employment	
11	Trade, Transportation and Utilities Payroll Employment	
12	Information Payroll Employment	
13	Financial Activities Payroll Employment	
14	Professional and Business Services Payroll Employment	
15	Education and Health Services Payroll Employment	
16	Leisure and Hospitality Payroll Employment	
17	CPI for All Urban Consumers (CPI-U)	US Bureau of Labor Statistics
18	Consumer Confidence Index for Middle Atlantic Region	The Conference Board
19	Total Construction Contracts Awarded	McGraw-Hill Construction
20	Residential Construction Contracts Awarded	
21	Nonresidential Construction Contracts Awarded	
22	Total Private Dwelling Units Auth. by Bldg. Permits	US Bureau of the Census, Manufacturing and Construction Division
23	Priv. Single-Fam. Dwelling Units Auth. by Bldg. Permits	
24	Priv. Multi-Fam. Dwelling Units Auth. by Bldg. Permits	
25	Total New Vehicle Registrations	R.L. Polk and Company
26	New Passenger Car Registrations	
27	New Light Truck/Van Registrations	
28	Weeks Claimed and Insured Unemployment Rate	NJ Department of Labor and Workforce Development, Division of Program Planning, Analysis and Evaluation
29	Initial Claims - Weekly Averages	
30	Unemployment Insurance Exhaustions	

Data Sources for Economic Time Series 1-30

- 1-6 **Resident Labor Force Indicators** are produced using a modeling procedure based on regression techniques, that allows for the construction of error ranges. This procedure includes data variables from the NJ Department of labor & Workforce Development's monthly Current Employment Statistics (CES) survey, unemployment insurance claims data and responses from the US Bureau of labor Statistics' Current Population Survey (CPS) of 1,500 households in New Jersey. A new method was introduced effective with January 2005 estimates. Data are available monthly back to 1976.

Beginning with 1990, data incorporate 2000 census-based population controls as well as improved estimates of immigration, emigration, births and deaths for the state and are not directly comparable to earlier figures.

The **Labor Force Participation Rate** and the **Employment/Population Ratio** (Series 4 and 5) are expressed as percentages of the civilian noninstitutional population aged 16 years and over.

- 7-16 The **Establishment Employment Indicators** are generated from the monthly CES survey of employers on the number of persons who worked or received pay for any part of the pay period including the 12th of the month.

Data reflect March 2007 benchmarks.

Statistical Section Notes (cont.)

Seasonally adjusted data for Series 7-16 have been revised back to January 2003.
Not seasonally adjusted data have been revised back to 2006.

Private Sector Nonfarm Payroll Employment (Series 8) is computed by subtracting government employment from total nonfarm employment.

Standard errors have been computed to estimate the variance of total private sector employment and for all supersector series statewide, as well as for total private sector employment for Metropolitan Statistical Areas. More detailed information is available at www.nj.gov/labor/lra under "New Jersey's Economy". Please see the technical note on sample variance.

- 17 The **Consumer Price Index for All Urban Consumers (CPI-U)** is a measure of the average change over time in the prices paid by all urban consumers (excluding military personnel and persons in institutions) for a fixed market basket of consumer goods and services. The month-to-month change in the CPI is a measure of inflation. Beginning with January 2007, monthly data is reported out to three decimal points.

The **CPI-U** represents approximately 87% of the total population. The **US CPI-U** is the US City Average. The **US CPI-U** and **Metro Area CPI-U** (see definitions below) are not seasonally adjusted.

The CPI does not measure the relative cost of living between areas. There is no "New Jersey CPI". The division of New Jersey's 21 counties between two metropolitan areas for which CPIs are calculated is defined below.

Internet: US Bureau of Labor Statistics Web site may be accessed at <http://www.bls.gov/data/top20.htm> for all regional and national CPI data.

Metro Area definitions:

"NY" designates the *New York-Northern New Jersey - Long Island, NY-NJ-CT-PA area*. In New Jersey this includes Bergen, Essex, Hudson, Hunterdon, Mercer, Middlesex, Monmouth, Morris, Ocean, Passaic, Somerset, Sussex, Union and Warren counties. In New York, it includes New York City (5 counties), Dutchess, Nassau, Orange, Putnam, Rockland, Suffolk and Westchester counties. In Connecticut, it includes Fairfield and New Haven counties, plus parts of Litchfield and Middlesex counties. In Pennsylvania, it includes Pike County. Data are published monthly.

"PA" designates the *Philadelphia-Wilmington-Atlantic City, PA-NJ-DE-MD area*. In New Jersey this includes Atlantic, Burlington, Camden, Cape may, Cumberland, Gloucester, and Salem Counties. In Pennsylvania, it includes Bucks, Chester, Delaware, Montgomery and Philadelphia counties. In Delaware, it includes New Castle County, and in Maryland, Cecil County. Data are published bi-monthly.

- 18 **Consumer Confidence Index (CCI), Middle Atlantic Region (US 1985=100)** is based on a representative, random sample of 750 (15%) of a total of 5,000 US households surveyed monthly by NFO Research for the Conference Board. The index represents consumers' perceptions of the present general economy, their own financial conditions as well as their short-term (six months) outlook. Economists use the CCI as a leading indicator for consumer spending. The middle Atlantic Region consists of New Jersey, New York and Pennsylvania. Regional data are not seasonally adjusted.

- 19-21 **Construction Contracts** monthly data for current and prior year are subject to revision. Construction contracts unadjusted data revisions are published by special contract with The McGraw-Hill Construction. **PROHIBITED BY LAW ARE (1) REPRINTING AND (2) ELECTRONIC DISSEMINATION OF THE MONTHLY DATA.**

Statistical Section Notes (cont.)

Total Construction Contracts Awarded (Series 19) is the sum of not seasonally adjusted residential, nonresidential, and nonbuilding construction contract awards. The nonbuilding series is not published in the *New Jersey Economic Indicators*; however, current month, prior-month, year-ago nonbuilding data as well as cumulative over-the-year change may be found in the **New Jersey's Economy by the Numbers** table. (These data are not included on the Internet version of the table.)

Beginning October 1993, dormitories and hotels were no longer categorized as residential (Series 20); they were included in nonresidential construction contract awards (Series 21).

- 22-24 The **Residential Building Permits Indicators** are compiled by the US Bureau of the Census, Manufacturing and Construction Division as of the thirteenth workday of the following month. Data are collected for all permit-issuing places in the state through a monthly survey of local construction officials. If data are not received for a particular place for that month, the data are imputed. The Census Bureau conducts an annual follow-up to obtain as much data as possible for places for which the data were imputed during the year; these data are then considered to be **FINAL MONTHLY FIGURES**. (Final statewide totals used to produce the annual averages on p. S-22 also include "undistributed" units.) Data beginning January 1998 contain revisions allocated back to prior months and are directly comparable to over-the-year changes shown on the **New Jersey's Economy by the Numbers** table.

Total Private Dwelling Units Authorized by Building Permits (Series 22) data are the sum of single-family, two-family, three-or-four-family, and five-or-more-family dwelling units. Public housing units are not included in the series and represent a tiny fraction of the total.

Private Multi-Family (5+ units) Authorized by Building Permits (Series 24) include all multi-family structures with five or more units, except those in public housing. Data do not exhibit a stable seasonal pattern and are, therefore, not appropriate for seasonal adjustment.

- 25-27 These series on **New Passenger Car & New Light Truck/Van Registrations** present data only on total new passenger cars and total light truck/vans (in the gross vehicle weight class 0-10,000 lbs.) registered in New Jersey, regardless of the state in which the sales occur. Included are both domestically produced and imported vehicles. Excluded are all federal government registrations. Monthly data for current and prior-year are subject to revision.

Because of unemployment insurance (UI) coverage and other law changes affecting eligibility for benefits, data on unemployment insurance claims (Series 28-30) may not be directly comparable between years.

- 28 **Weeks Claimed (Weekly Average)** is computed by dividing the total number of weeks claimed (intra-state and interstate agent under the Regular State UI Program only) in the month by the number of weeks in the month.

The **Insured Unemployment Rate (IUR)** is the seasonally adjusted weekly average of weeks claimed (intrastate and interstate agent claims under the Regular State UI Program only), which is a proxy for a count of claimants, as a percent of employment covered by unemployment insurance.

- 29 The **Initial Claims Weekly Average** represents intrastate and interstate agent claims under the Regular State UI program only.

- 30 **Unemployment Insurance Exhaustions** are for the Regular State UI Program only.