

702
974.905
644.4
C-1

DEPARTMENT OF HUMAN SERVICES
INTER-OFFICE COMMUNICATION

DATE January 30, 1998

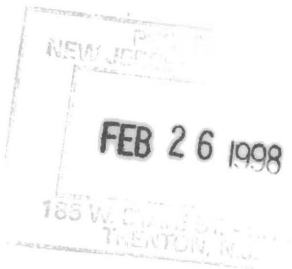
TO William Waldman
Commissioner

FROM Karen Highsmith
Director



SUBJECT CURRENT PROGRAM STATISTICS

Attached please find CURRENT PROGRAM STATISTICS for November 1997. Included are TANF-oriented data, the WFNJ Statistical summary and TANF participation rates. Should you have any questions, please feel free to call me.



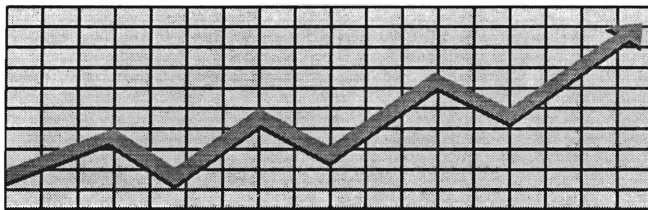
KH:kas:c

Attachments

- c Miller
- Facciarossa
- Grant
- Guhl
- Tencza

State of New Jersey
Department of Human Services
Division of Family Development

CURRENT PROGRAM STATISTICS



November 1997

Karen Highsmith, Director

CURRENT PROGRAM STATISTICS

November 1997

TABLE OF CONTENTS	Page
Highlights of Current Program Statistics	1-3
Statistics by County, November 1997	
Table 1 TANF	4
Graph 1 Current TANF Families	4
Table 2 Food Stamp Program	5
Graph 2 Current Food Stamp Households/Persons	5
Table 3 TANF/SSI Emergency Assistance Program	6
Graph 3 Current TANF Families Receiving Emergency Assistance	6
Table 4 WFNJ Statistical Summary	7
State Summary, 1995 - 1997	
Table 5 TANF/AFDC, November 1995 - November 1997	8
Graph 4 Families Receiving AFDC, 11/95 - 11/97	8
Table 6 Food Stamp Program, November 1995 - November 1997	9
Graph 5 Food Stamp Households, 11/95 - 11/97	9
Graph 6 Food Stamp Recipients, 11/95 - 11/97	10
Table 7 TANF/AFDC Emergency Assistance Program, November 1995 - November 1997	11
Graph 7 TANF/AFDC Families Receiving Emergency Assistance, 11/95 - 11/97	11
Table 8 TANF Participation Rates, by County and Statewide, May 1997 - November 1997	12
Graph 8 TANF Participation Rates, 5/97 - 11/97	13
Table 9 General Assistance, and GA Emergency Assistance, September 1995 - September 1997	14
Graph 9 General Assistance Recipients, 10/95-10/97	14
Table 10 Child Support and Paternity, Federal Fiscal Years 1996-1997	15
Explanatory Notes	16-17
Supplement	
Table 11 WFNJ General Assistance Recipients and EA Payments by County and Municipality, September 1997	18

Highlights of **CURRENT PROGRAM STATISTICS**

TANF

(Tables 1 and 5, Graphs 1 and 4)

As of the end of November 1997, about 92,000 eligible families in New Jersey were receiving TANF.

- 82,800 single head of household families
- 3800 two-parent families
- 5600 Medicaid Only families

The largest number of TANF families by county: (54.4 percent of all TANF families)

- 24,515 Essex
- 14,677 Hudson
- 10,966 Camden

The number of TANF families in other counties ranged from:

- 106 families in Hunterdon County to 6,284 in Passaic County,
with seven below 1000 families

There were about 1700 fewer eligible TANF families in November 1997 than in October 1997, with a decline of almost 25,000, or 21.2 percent, over the number of AFDC families two years ago.

- **Single head families:** 1900 fewer were eligible in November 1997 than in October 1997 and close to 23,000 below two years ago.
- **Two parent families:** declined from about 6400 in November 1995 to about 3800 in November 1997.
- **Medicaid Only families:** averaged nearly 5200 for 1995, and about 5000 for both 1996 and the first eleven months of 1997, though there was an increase of more than 400 from October to November 1997.

FOOD STAMP PROGRAM

(Tables 2 and 6, Graphs 2, 5, and 6)

At the end of November 1997, exactly 183,000 households were participating in the Food Stamp Program.

- **TANF:** Less than 84,000 households with about 266,000 persons.
- **Other low income:** About 99,000 households with about 149,000 persons.
- **Total persons:** Less than 416,000, including 196,000 adults and less than 220,000 children
- **By County:** 49.5 percent of the households were in:

Essex	47,600
Hudson	25,000
Camden	18,000

The number of Food Stamp households in New Jersey remained in the 220,000 to 223,000 range from September 1995 through June 1996. Thereafter Food Stamp households declined substantially (from about 220,000 in June 1996 to 185,000 or less in August through November 1997).

- Fewer **AFDC/TANF(FS)** households than **Other Low Income** households received Food Stamps each month since November 1995. Both categories were about even, near **111,000** in November 1995. **Other Low Income** households peaked close to **115,000** in May 1996 and had declined to about **100,000** or less in August through November 1997, while there were less than **84,000 TANF(FS)** households by November 1997.
- **Total Recipients:** in the last two years, peaked at almost **516,000** in March 1996, and declined to less than **416,000** by November 1997, a drop of **100,000**, approaching **20 percent**.
- **Recipient Adults:** peaked at close to **248,000** in March 1996, and were down by nearly **52,000 (21 percent)** at **196,000** in November 1997.
- **Recipient Children:** decline by nearly **50,000 (more than 18 percent)**, from close to **270,000** in November 1995 to about **220,000** in November 1997.

EMERGENCY ASSISTANCE

(Tables 3, 7 and 9, Graphs 3, 7 and 9)

In November 1997 Emergency Assistance (EA) payments were made for 2606 eligible TANF families and 189 SSI recipients in New Jersey. For TANF families this included payments for:

- **Temporary Rental Assistance (TRA)** for 909 families
- **Motel** placements for 172 families and **emergency shelter** placements for 171 families
- **All other TANF-EA** for 1354 families (including back rent, back utilities, security deposits, furnishings, clothing and food allowance, or transitional housing)
- **885** families in **Essex County**, **305** in **Passaic County**, **261** in **Bergen County**, and for **less than 200** TANF families in each of the other counties.

In the past two years, the average number of EA payments for TANF/AFDC families was 5800 in 1995, 4800 in 1996, and 3600 for the first eleven months of 1997.

- **TRA** payments declined by more than **50 percent** from about **1,800** per month in November 1995 to about **900** in November 1997, the first time under **1000**.
- **Emergency Shelter** payments were made for an average of **369** families per month in 1995, **345** in 1996, and **296** for the first eleven months of 1997. They were under **200** for the first time in November.
- **Motel** payments were made for an average of **405** families per month in 1995, **320** in 1996, and **248** for the first eleven months of 1997. They were under **200** for the first time in November.
- **Other EA** payments were made for an average of **2779** families per month in 1995, **2388** in 1996, and **1770** in the first eleven months of 1997. They were under **1500** for the first time in November.

For 1995 there were an average of 7400 GA EA recipients, and 6800 for 1996. Of those, GA TRA payments were made to an average of 4400 recipients in 1995, and 4100 in 1996. For the first nine months of 1997 there were an average of less than 6800 GA EA payments (which is less than the comparable period in 1996), and less than 4100 GA TRA payments.

TANF PARTICIPATION RATES

(Table 8, Graph 8)

In November 1997 the Statewide TANF participation rate was 43.5 percent. This is an increase of more than 1 percentage point over October, following a 10 percentage point gain over September 1997. These rates are based on the new formulation mandated by the 1996 federal welfare reform legislation establishing Temporary Assistance to Needy Families (TANF), which went into effect with the implementation of Work First New Jersey welfare reform.

- County rates were distributed as follows in November:
 - 20.0 to 29.9 percent -- Essex
 - 30.0 to 39.9 percent -- Hudson, Mercer
 - 40.0 to 49.9 percent -- Camden, Passaic, Union
 - 50.0 to 59.9 percent -- Bergen, Monmouth
 - 60.0 to 69.9 percent -- Gloucester, Ocean, Salem, Warren
 - 70.0 to 79.9 percent -- Cumberland
 - 80.0 to 89.9 percent -- Atlantic, Burlington, Middlesex, Somerset
 - 90.0 to 99.9 percent -- Cape May
 - 100 percent -- Hunterdon, Morris, Sussex

GENERAL ASSISTANCE

(Table 9, Graph 9)

There were less than 28,000 GA recipients in September 1997 (the latest available data), the lowest level in the past two years. Most of the decline has been among employable GA recipients. The GA total was nearly 3000 below September 1996 and 4000 below September 1995.

- **Employable GA** recipients reached a peak in March 1996 of more than **23,500**. There have been less than **21,000** every month since June 1996, and less than **18,000** since July 1997.
- **Unemployable GA** recipients remained close to **11,000** over the past two years.

CHILD SUPPORT AND PATERNITY

(Table 10)

The total distribution of collections of the Child Support and Paternity Program increased from less than \$537 million in FFY 1996 (October 1995 - September 1996) to nearly \$593 million in FFY 1997 (October 1996 - September 1997).

**Table 1
TANF**

**NUMBER OF APPLICATIONS AND TERMINATIONS DURING REPORT MONTH, AND
NUMBER OF ELIGIBLE FAMILIES RECEIVING TANF AT END OF REPORT MONTH**

PROGRAM

November 1997

County	Applications Approved	Terminations	Single Head Families	Two Parent Families	Medicaid Only	Total TANF
ATLANTIC	244	323	2,390	59	133	2,582
BERGEN	133	186	1,992	160	85	2,237
BURLINGTON	270	311	1,914	104	245	2,263
CAMDEN	780	1,064	9,546	586	834	10,966
CAPE MAY	68	98	538	62	78	678
CUMBERLAND	269	328	2,513	229	285	3,027
ESSEX	903	1,133	23,461	433	621	24,515
GLOUCESTER	235	260	1,680	93	259	2,032
HUDSON	523	728	13,102	648	927	14,677
HUNTERDON	14	27	73	4	29	106
MERCER	306	453	3,776	137	377	4,290
MIDDLESEX	369	506	3,616	313	436	4,365
MONMOUTH	223	267	3,029	137	113	3,279
MORRIS	53	81	455	17	59	531
OCEAN	188	321	1,949	173	301	2,423
PASSAIC	400	478	5,799	383	102	6,284
SALEM	119	104	612	21	77	710
SOMERSET	123	133	597	50	81	728
SUSSEX	27	48	133	9	56	198
UNION	377	476	5,222	178	422	5,822
WARREN	31	60	367	29	34	430
NJ TOTAL	5,655	7,385	82,764	3,825	5,554	92,143

24,515

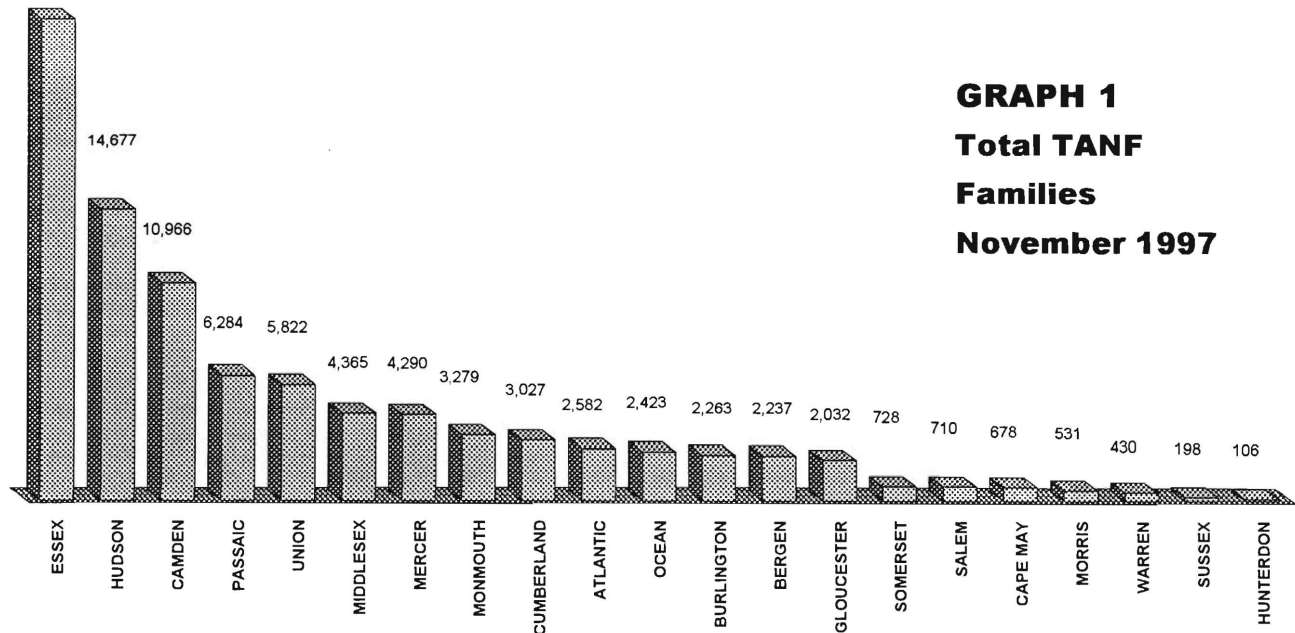
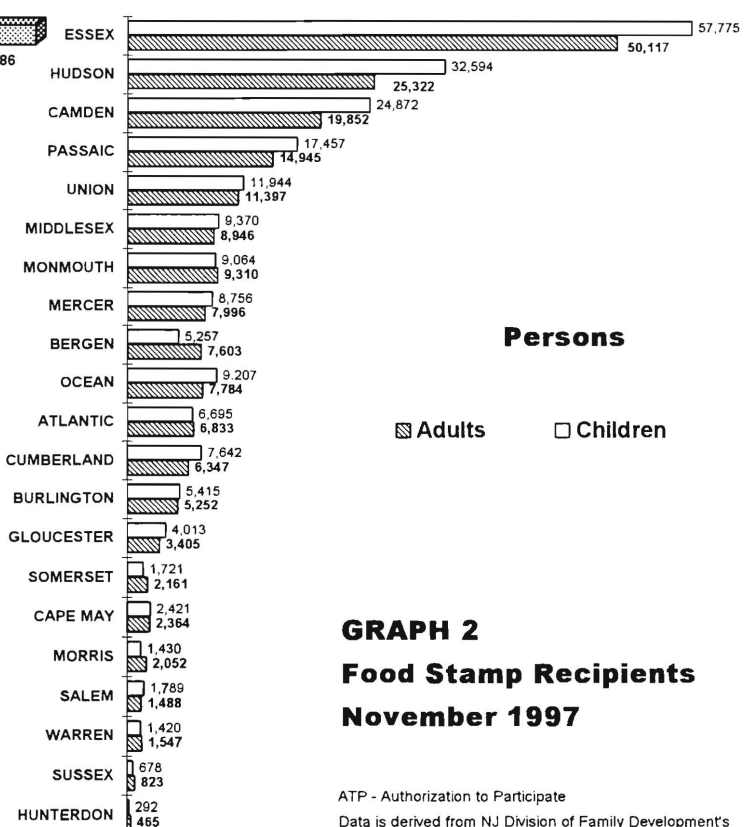
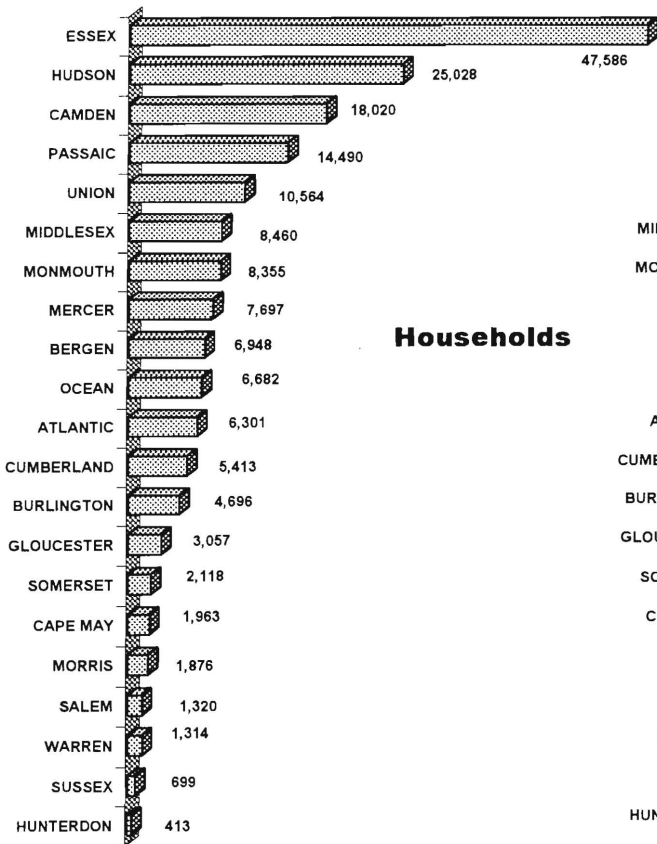


Table 2
FOOD STAMP PROGRAM

NUMBER OF ATP'S ISSUED TO HOUSEHOLDS, PERSONS, ADULTS AND CHILDREN AT THE END OF THE REPORT MONTH

November 1997

County	HOUSEHOLDS			PERSONS				
	TANF	Other low income	TOTAL	TOTAL	TANF	Other low income	Adults	Children
ATLANTIC	2,235	4,066	6,301	13,528	7,427	6,101	6,833	6,695
BERGEN	1,918	5,030	6,948	12,860	5,578	7,282	7,603	5,257
BURLINGTON	1,982	2,714	4,696	10,667	6,185	4,482	5,252	5,415
CAMDEN	9,960	8,060	18,020	44,724	32,920	11,804	19,852	24,872
CAPE MAY	818	1,145	1,963	4,785	2,820	1,965	2,364	2,421
CUMBERLAND	2,854	2,559	5,413	13,989	9,790	4,199	6,347	7,642
ESSEX	23,371	24,215	47,586	107,892	73,604	34,288	50,117	57,775
GLOUCESTER	1,630	1,427	3,057	7,418	5,175	2,243	3,405	4,013
HUDSON	13,424	11,604	25,028	57,916	40,588	17,328	25,322	32,594
HUNTERDON	77	336	413	757	249	508	465	292
MERCER	3,529	4,168	7,697	16,752	11,083	5,669	7,996	8,756
MIDDLESEX	3,778	4,682	8,460	18,316	11,516	6,800	8,946	9,370
MONMOUTH	3,059	5,296	8,355	18,374	10,058	8,316	9,310	9,064
MORRIS	460	1,416	1,876	3,482	1,395	2,087	2,052	1,430
OCEAN	2,543	4,139	6,682	16,991	8,680	8,311	7,784	9,207
PASSAIC	5,654	8,836	14,490	32,402	18,450	13,952	14,945	17,457
SALEM	664	656	1,320	3,277	2,182	1,095	1,488	1,789
SOMERSET	626	1,492	2,118	3,882	1,861	2,021	2,161	1,721
SUSSEX	156	543	699	1,501	507	994	823	678
UNION	4,638	5,926	10,564	23,341	14,974	8,367	11,397	11,944
WARREN	427	887	1,314	2,967	1,394	1,573	1,547	1,420
NJ TOTAL	83,803	99,197	183,000	415,821	266,436	149,385	196,009	219,812



GRAPH 2
Food Stamp Recipients
November 1997

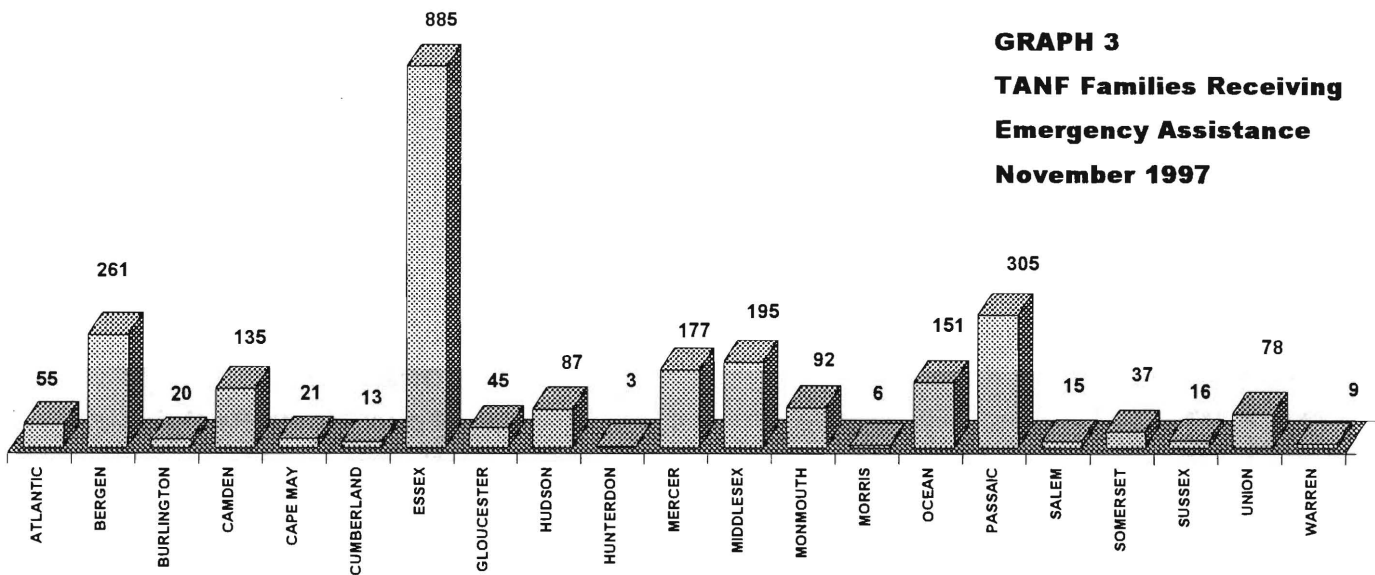
ATP - Authorization to Participate
Data is derived from NJ Division of Family Development's FAMIS report # FB-160.

Table 3
TANF/SSI
EMERGENCY
ASSISTANCE

NUMBER OF ELIGIBLE FAMILIES RECEIVING EMERGENCY ASSISTANCE PAYMENTS
(UNDUPLICATED CASES)

November 1997

County	TANF Families Receiving Emergency Assistance					SSI Recipients Receiving EA
	TOTAL TANF-EA	Temporary Rental Assist.	Motel Housing	Emergency Shelter	Other TANF-EA	
ATLANTIC	55	22	4	3	26	8
BERGEN	261	135	32	16	78	15
BURLINGTON	20	0	0	1	19	0
CAMDEN	135	44	8	14	69	16
CAPE MAY	21	6	0	1	14	2
CUMBERLAND	13	0	0	4	9	1
ESSEX	885	392	28	44	421	40
GLOUCESTER	45	18	0	9	18	3
HUDSON	87	18	5	19	45	4
HUNTERDON	3	0	0	2	1	0
MERCER	177	76	17	1	83	13
MIDDLESEX	195	42	18	5	130	17
MONMOUTH	92	65	5	1	21	0
MORRIS	6	0	0	1	5	2
OCEAN	151	57	42	3	49	25
PASSAIC	305	2	2	19	282	28
SALEM	15	6	1	1	7	0
SOMERSET	37	5	1	10	21	1
SUSSEX	16	5	4	1	6	2
UNION	78	16	3	14	45	12
WARREN	9	0	2	2	5	0
NJ TOTAL	2,606	909	172	171	1,354	189



Derived from NJ Division of Family Development FAMIS Reports #FM457 and #FM430-03A

TABLE 4**WORK FIRST NEW JERSEY STATISTICAL SUMMARY****WFNJ****November 1997**

COUNTY	TOTAL NONEXEMPT RECIPIENTS	EMPLOYMENT DIRECTED ACTIVITIES			EMPLOYED OPEN (TANF RECIPIENT)	CHILD CARE ON ACTIVE CASE	EMPLOYED CLOSED	POST TANF CHILD CARE
		CWEP	ALL OTHER TRAINING	JOB SEARCH				
ATLANTIC	1,190	154	266	122	320	109	91	164
BERGEN	1,322	173	127	94	288	153	69	93
BURLINGTON	927	314	105	328	296	146	128	226
CAMDEN	6,501	283	398	1,236	1,400	672	253	429
CAPE MAY	372	65	21	77	111	24	28	32
CUMBERLAND	1,420	205	148	508	270	172	116	159
ESSEX	15,719	1,209	1,788	782	1,418	1,515	294	270
GLOUCESTER	812	110	61	237	166	101	60	94
HUDSON	9,277	1,248	1,591	162	991	961	245	396
HUNTERDON	24	0	12	9	27	6	9	10
MERCER	2,244	235	347	165	261	281	136	199
MIDDLESEX	2,079	100	412	559	667	203	153	205
MONMOUTH	1,960	155	219	132	445	342	119	237
MORRIS	178	74	65	153	74	66	42	58
OCEAN	1,055	42	114	332	195	119	122	192
PASSAIC	3,859	791	621	413	414	407	168	136
SALEM	369	51	88	64	76	88	23	43
SOMERSET	333	63	63	41	111	60	31	48
SUSSEX	51	22	15	26	47	21	16	55
UNION	3,062	614	435	679	357	280	121	131
WARREN	229	96	12	13	59	20	25	19
STATE	52,983	6,004	6,908	6,132	7,993	5,746	2,236	3,196

Data is derived from NJ Division of Family Development's FAMIS reports

**Table 5
TANF/AFDC
PROGRAM**

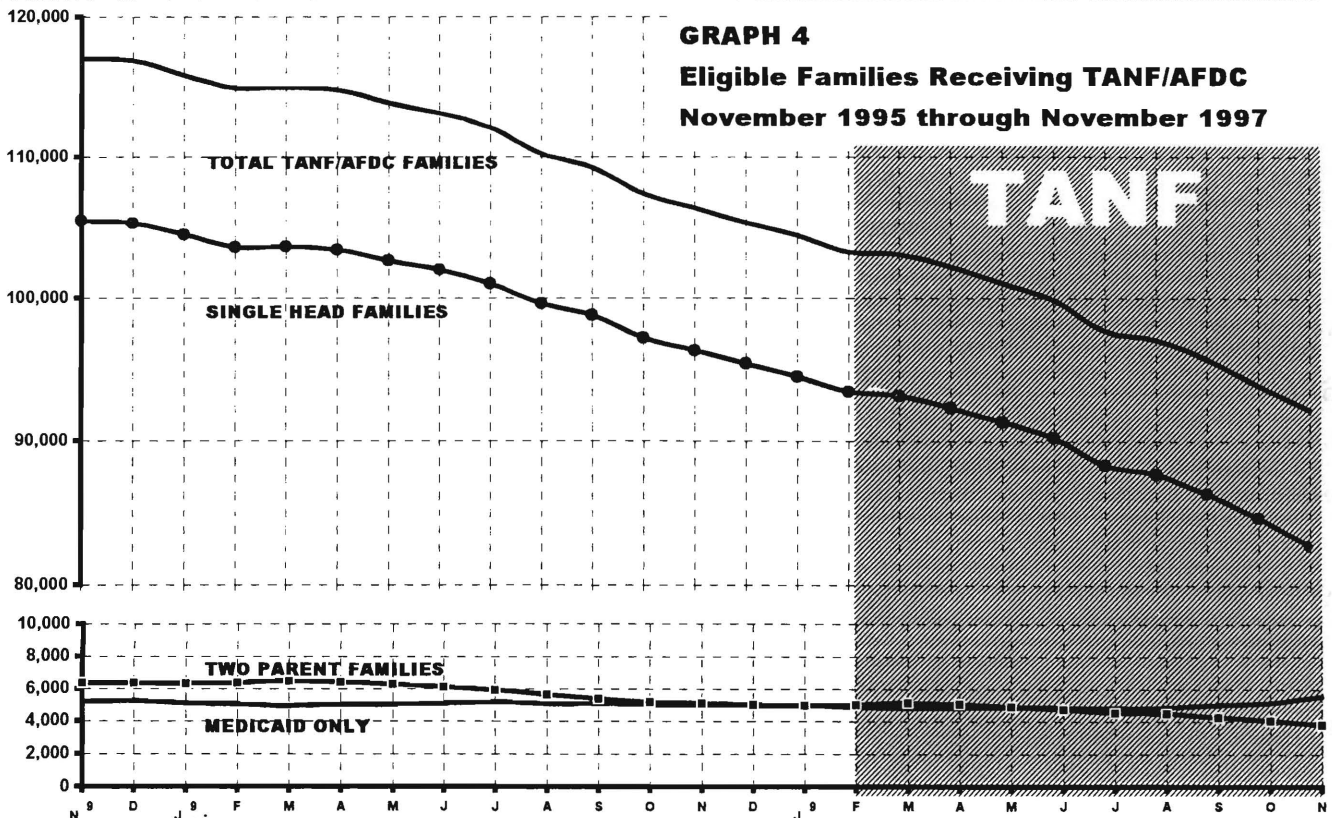
**NUMBER OF APPLICATIONS AND TERMINATIONS DURING REPORT MONTH, AND
NUMBER OF ELIGIBLE FAMILIES RECEIVING TANF/AFDC AT END OF REPORT MONTH**

November 1995 through November 1997

AFDC	Applications Approved	Terminations	Regular AFDC (C Segment)	Unemployed Parents(F)	State AFDC(N)	Two Parents (F+N)	Medicaid Only	Total AFDC
1995 NOV	6,083	6,660	105,445	3,164	3,199	6,363	5,189	116,997
DEC	5,582	5,775	105,287	3,165	3,189	6,354	5,258	116,899
AVERAGE (12 mos.)	5,956	6,460	107,376	3,575	3,288	6,863	5,192	119,430
1996 JAN	5,332	6,236	104,430	3,139	3,173	6,312	5,113	115,855
FEB	5,217	6,283	103,561	3,161	3,170	6,331	5,060	114,952
MAR	6,317	6,302	103,598	3,230	3,217	6,447	4,956	115,001
APR	6,896	7,241	103,352	3,192	3,211	6,403	5,040	114,795
MAY	5,335	6,152	102,600	3,112	3,163	6,275	5,038	113,913
JUN	5,319	6,121	101,947	2,999	3,117	6,116	5,116	113,179
JUL	5,874	7,027	100,968	2,843	3,073	5,916	5,200	112,084
AUG	5,014	6,789	99,567	2,638	2,993	5,631	5,053	110,251
SEP	6,311	7,440	98,744	2,462	2,933	5,395	5,097	109,236
OCT	5,213	7,015	97,152	2,368	2,822	5,190	5,026	107,368
NOV	5,374	6,549	96,238	2,329	2,752	5,081	5,034	106,353
DEC	5,018	6,137	95,322	2,308	2,708	5,016	4,992	105,330
AVERAGE	5,602	6,608	100,623	2,815	3,028	5,843	5,060	111,526
1997 JAN	5,933	6,803	94,429	2,290	2,692	4,982	4,994	104,405

TANF	Applications Approved	Terminations	Single Head Families	Two Parent Families	Medicaid Only	Total TANF
FEB	4,410	5,728	93,359	5,010	4,862	103,231
MAR	6,184	6,416	93,104	5,125	4,835	103,064
APR	5,172	6,034	92,300	5,049	4,828	102,177
MAY	4,882	6,121	91,290	4,893	4,851	101,034
JUN	4,620	5,760	90,223	4,748	4,856	99,827
JUL	5,240	7,344	88,306	4,522	4,811	97,639
AUG	4,637	5,388	87,670	4,484	4,860	97,014
SEP	5,542	6,982	86,346	4,263	5,014	95,623
OCT	4,488	6,276	84,669	4,045	5,138	93,852
NOV	5,655	7,385	82,764	3,825	5,554	92,143
AVERAGE (incl. JAN)	5,160	6,385	89,496	4,631	4,964	99,092

**GRAPH 4
Eligible Families Receiving TANF/AFDC
November 1995 through November 1997**



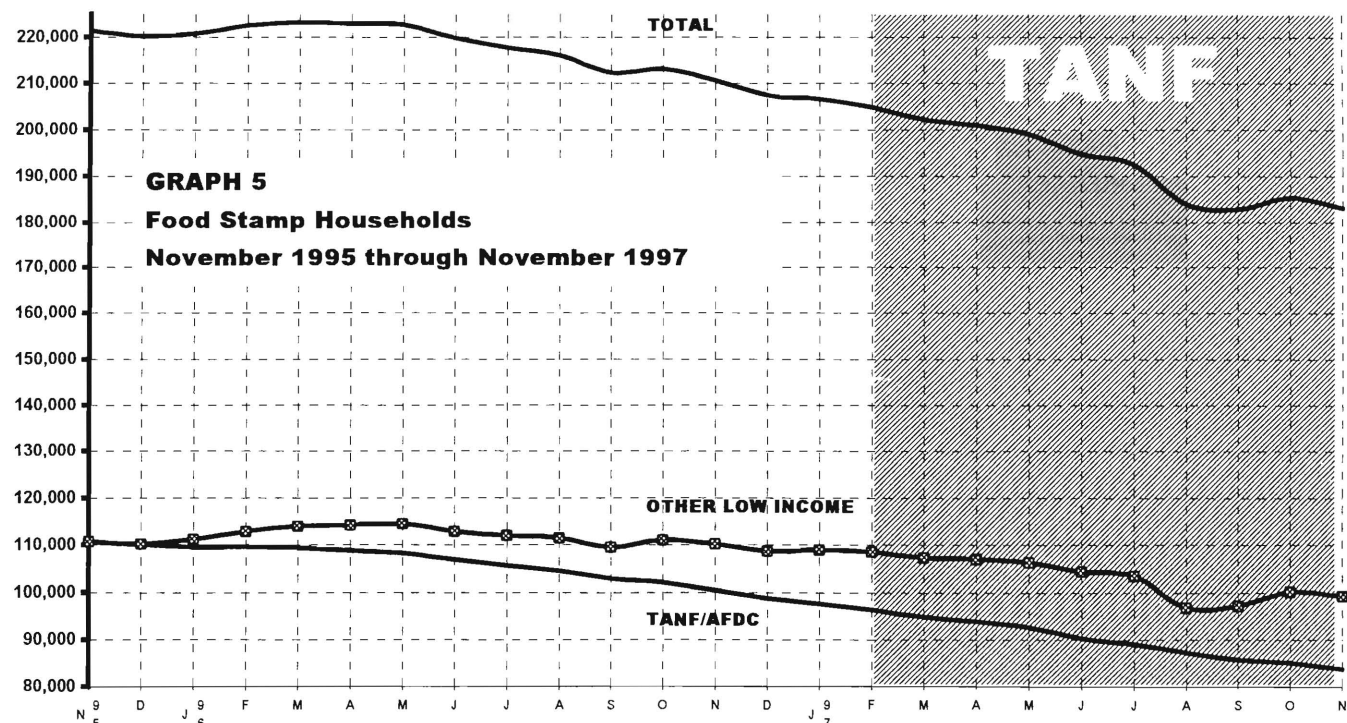
Data is derived from NJ Division of Family Development's FAMIS report #FF-012

Table 6
FOOD STAMP
PROGRAM

NUMBER OF ATP'S ISSUED TO HOUSEHOLDS, PERSONS, ADULTS
AND CHILDREN AT THE END OF THE REPORT MONTH

November 1995 through November 1997

		HOUSEHOLDS			PERSONS				
		TANF/AFDC	Other low income	TOTAL	TOTAL	TANF/AFDC	Other low income	Adults	Children
AFDC 1995	NOV	110,630	110,763	221,393	514,823	346,034	168,789	245,455	269,368
	DEC	109,992	110,155	220,147	511,727	343,955	167,772	243,965	267,762
AVERAGE (12 mos.)		112,211	109,290	221,500	519,170	351,916	167,254	245,892	273,279
1996	JAN	109,554	111,166	220,720	512,165	342,778	169,387	244,801	267,364
	FEB	109,649	112,813	222,462	515,181	343,314	171,867	246,961	268,220
	MAR	109,364	113,895	223,259	515,676	342,361	173,315	247,695	267,981
	APR	108,787	114,163	222,950	514,375	340,597	173,778	247,380	266,995
	MAY	108,205	114,458	222,663	513,213	338,891	174,322	246,918	266,295
	JUN	106,875	112,888	219,763	506,926	334,762	172,164	243,422	263,504
	JUL	105,653	112,023	217,676	501,575	331,157	170,418	240,840	260,735
	AUG	104,568	111,473	216,041	497,436	328,055	169,381	238,804	258,632
	SEP	102,827	109,441	212,268	488,765	322,572	166,193	234,442	254,323
	OCT	102,088	111,008	213,096	489,991	321,226	168,765	235,401	254,590
	NOV	100,411	110,254	210,665	484,378	317,163	167,215	232,756	251,622
	DEC	98,729	108,617	207,346	477,693	312,869	164,824	229,191	248,502
AVERAGE		105,559	111,850	217,409	501,448	331,312	170,136	240,718	260,730
1997	JAN	97,555	108,961	206,516	475,374	310,342	165,032	228,388	246,986
	FEB	96,279	108,462	204,741	471,576	307,066	164,510	226,570	245,006
	MAR	94,787	107,331	202,118	465,920	303,052	162,868	223,576	242,344
	APR	93,845	107,008	200,853	462,303	300,073	162,230	221,538	240,765
	MAY	92,593	106,369	198,962	457,430	296,327	161,103	219,003	238,427
	JUN	90,218	104,441	194,659	447,417	288,957	158,460	213,692	233,725
	JUL	89,029	103,449	192,478	441,141	284,541	156,600	210,029	231,112
	AUG	87,165	96,714	183,879	421,881	276,940	144,941	197,418	224,463
	SEP	85,609	97,112	182,721	417,728	272,043	145,685	195,800	221,928
	OCT	85,116	100,077	185,193	420,626	270,376	150,250	198,347	222,279
	NOV	83,803	99,197	183,000	415,821	266,436	149,385	196,009	219,812
	AVERAGE		90,545	103,556	194,102	445,202	288,741	156,460	211,852



ATP - Authorization to Participate
Data is derived from NJ Division of Family Development's FAMIS report # FB-160.

GRAPH 6
Food Stamp Recipients
November 1995 through November 1997

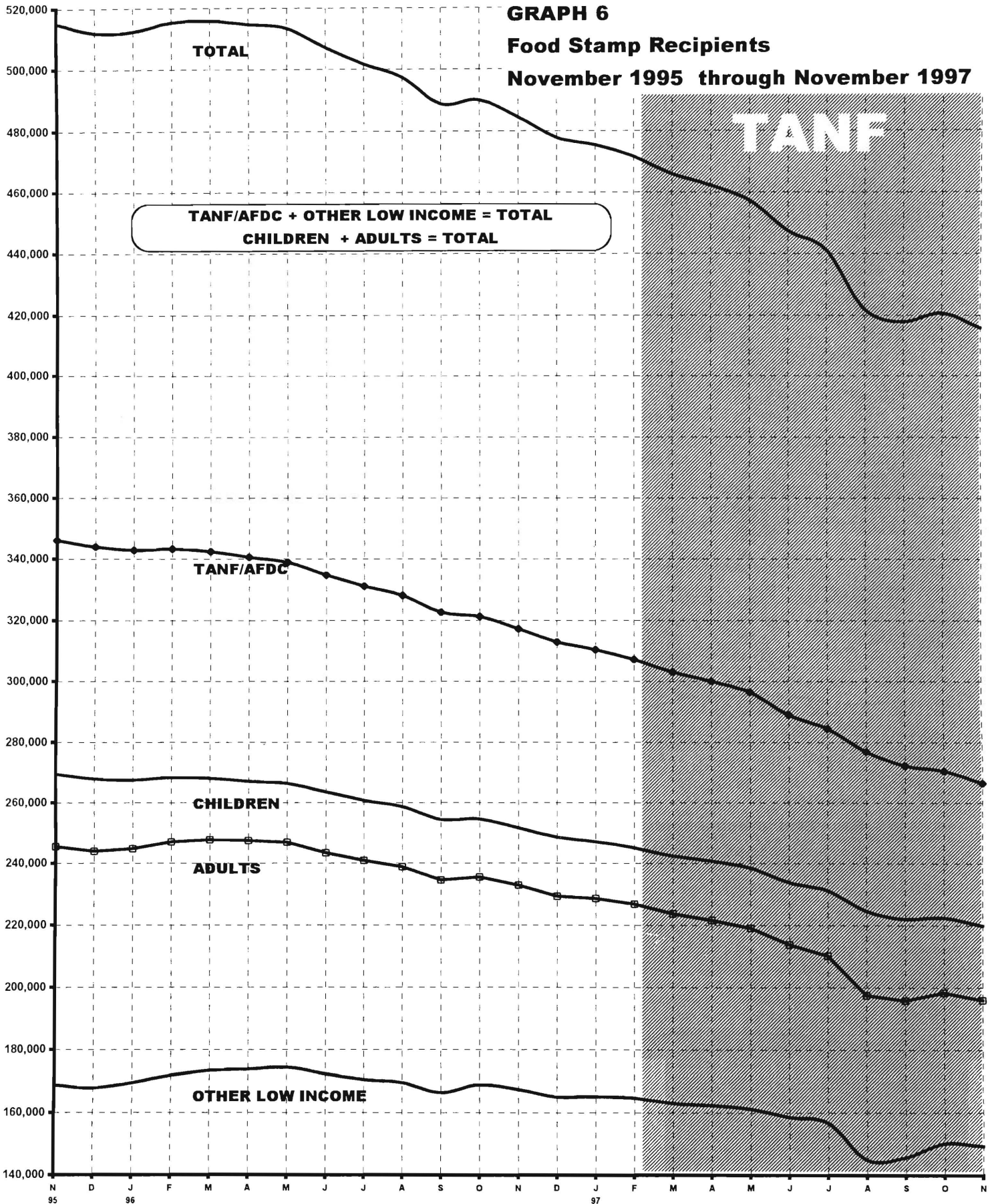


Table 7

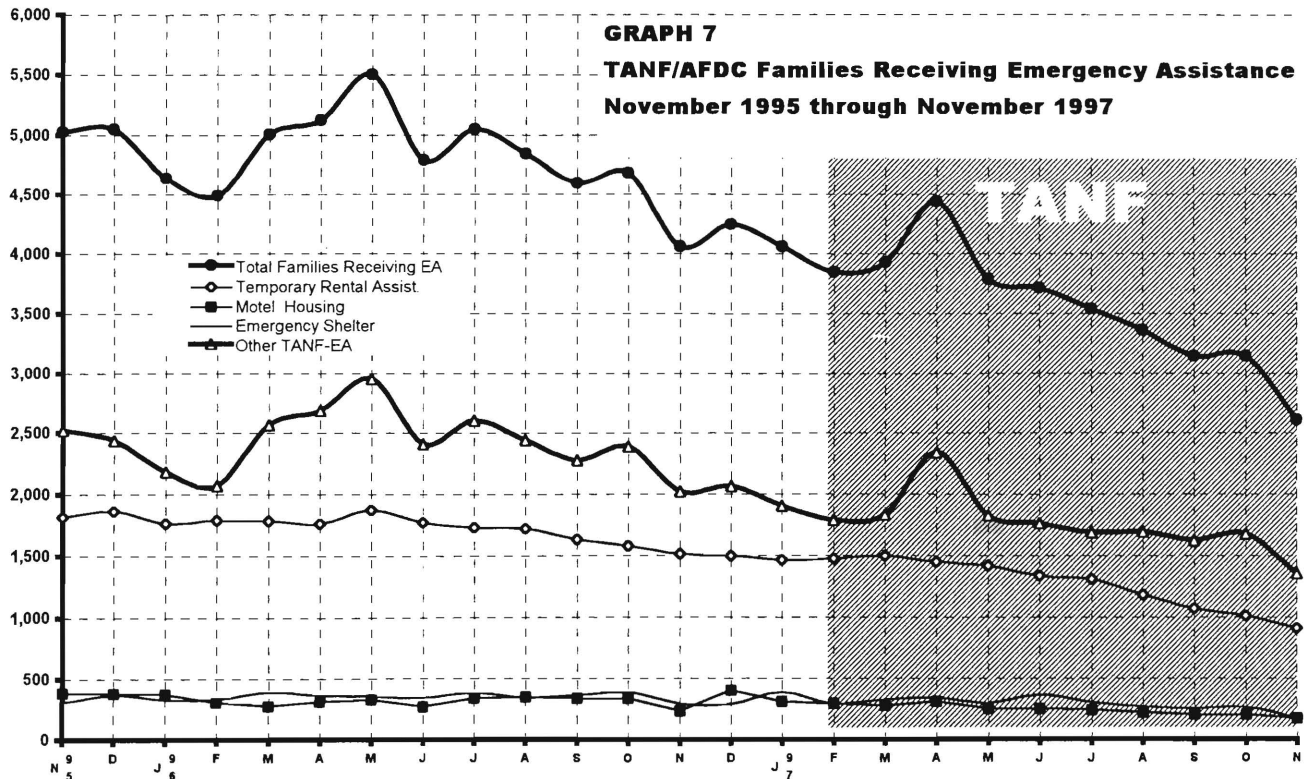
**NUMBER OF ELIGIBLE FAMILIES RECEIVING EMERGENCY ASSISTANCE PAYMENTS
(UNDUPLICATED CASES)**

TANF/AFDC

EMERGENCY ASSISTANCE

November 1995 through November 1997

	Total Families Receiving EA	Temporary Rental Assistance	Motel Housing	Emergency Shelter	Other TANF/AFDC-EA
AFDC 1995 NOV	5,024	1,816	384	302	2,522
DEC	5,048	1,864	377	369	2,438
AVERAGE (12 mos.)	5,755	2,201	405	369	2,779
1996 JAN	4,639	1,761	374	325	2,179
FEB	4,490	1,788	305	330	2,067
MAR	5,001	1,779	270	388	2,564
APR	5,118	1,760	309	364	2,685
MAY	5,498	1,873	323	350	2,952
JUN	4,791	1,772	266	341	2,412
JUL	5,044	1,729	335	377	2,603
AUG	4,845	1,716	346	339	2,444
SEP	4,600	1,625	337	362	2,276
OCT	4,683	1,576	334	385	2,388
NOV	4,059	1,507	237	294	2,021
DEC	4,244	1,492	400	286	2,066
AVERAGE	4,751	1,698	320	345	2,388
1997 JAN	4,059	1,462	310	382	1,905
FEB	3,847	1,473	296	292	1,786
MAR	3,926	1,494	278	327	1,827
APR	4,440	1,447	309	342	2,342
MAY	3,788	1,416	250	298	1,824
JUN	3,711	1,336	251	365	1,759
JUL	3,538	1,308	238	306	1,686
AUG	3,360	1,181	217	269	1,693
SEP	3,140	1,069	202	250	1,619
OCT	3,142	1,009	201	259	1,673
NOV	2,606	909	172	171	1,354
AVERAGE	3,596	1,282	248	296	1,770



Data derived from NJ Division of Family Development FAMIS Report #FM457 and #FM430-03a.

Table 8**TANF PARTICIPATION RATES****May 1997 - November 1997**

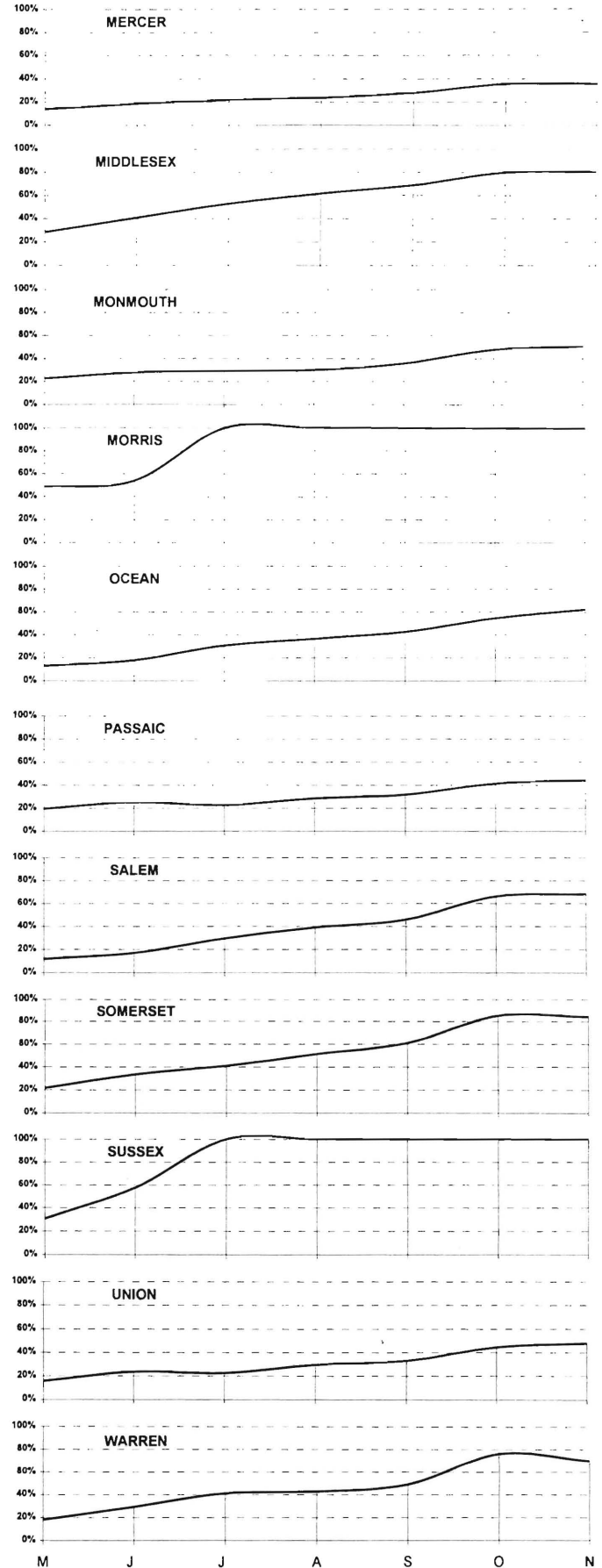
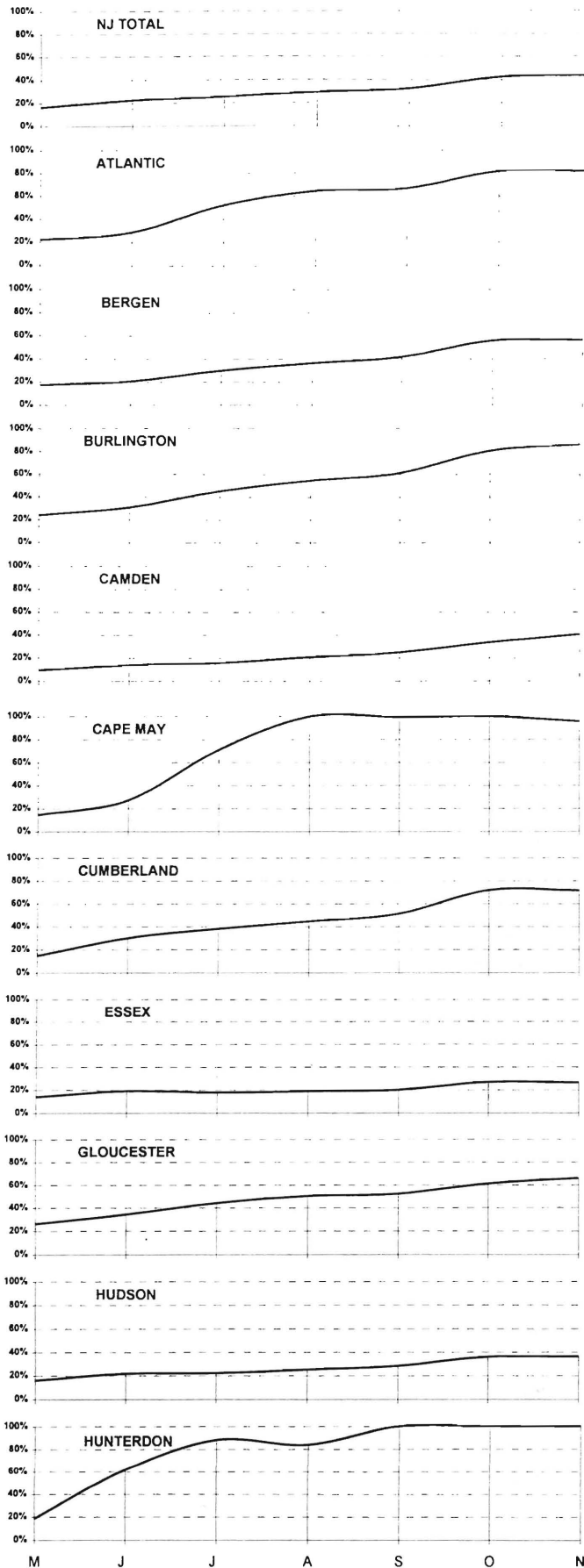
County	May	June	July	August	September	October	November
ATLANTIC	21.9%	28.8%	52.1%	64.5%	66.9%	81.4%	81.6%
BERGEN	17.3%	20.5%	29.6%	36.3%	41.6%	55.6%	56.1%
BURLINGTON	23.6%	30.7%	45.4%	54.6%	61.0%	80.6%	85.9%
CAMDEN	9.3%	13.9%	15.8%	20.8%	25.0%	33.6%	40.4%
CAPE MAY	14.4%	27.2%	71.0%	99.7%	99.2%	100.0%	95.7%
CUMBERLAND	14.6%	30.0%	38.1%	44.7%	51.2%	72.0%	71.6%
ESSEX	13.9%	19.0%	17.9%	18.8%	20.1%	26.8%	26.3%
GLOUCESTER	26.1%	34.1%	44.3%	50.2%	52.3%	61.3%	65.9%
HUDSON	16.2%	21.7%	22.1%	25.1%	28.3%	36.0%	36.4%
HUNTERDON	18.4%	61.7%	88.4%	84.0%	100.0%	100.0%	100.0%
MERCER	13.6%	18.4%	21.7%	23.7%	27.8%	35.3%	35.2%
MIDDLESEX	28.2%	40.7%	52.8%	61.6%	68.6%	80.1%	80.6%
MONMOUTH	22.7%	27.4%	29.1%	29.7%	35.6%	47.8%	50.6%
MORRIS	48.7%	53.8%	100.0%	100.0%	100.0%	100.0%	100.0%
OCEAN	12.6%	17.9%	30.5%	36.3%	42.5%	54.5%	61.9%
PASSAIC	19.4%	25.1%	22.7%	28.6%	31.7%	41.3%	44.2%
SALEM	11.7%	16.9%	29.6%	39.0%	45.8%	66.0%	68.3%
SOMERSET	21.3%	33.3%	41.0%	51.2%	61.0%	84.8%	83.8%
SUSSEX	30.5%	57.5%	100.0%	100.0%	100.0%	100.0%	100.0%
UNION	15.7%	23.5%	22.3%	29.6%	32.9%	44.5%	47.9%
WARREN	17.9%	29.3%	40.9%	42.8%	48.9%	75.9%	69.9%
NJ TOTAL	16.3%	22.5%	25.1%	29.0%	32.3%	42.3%	43.5%

The new Work First New Jersey participation rate formulation mandated by PRWORA, 1996 federal welfare reform legislation establishing Temporary Assistance to Needy Families (TANF)

Graph 8

TANF PARTICIPATION RATES

May 1997 - November 1997



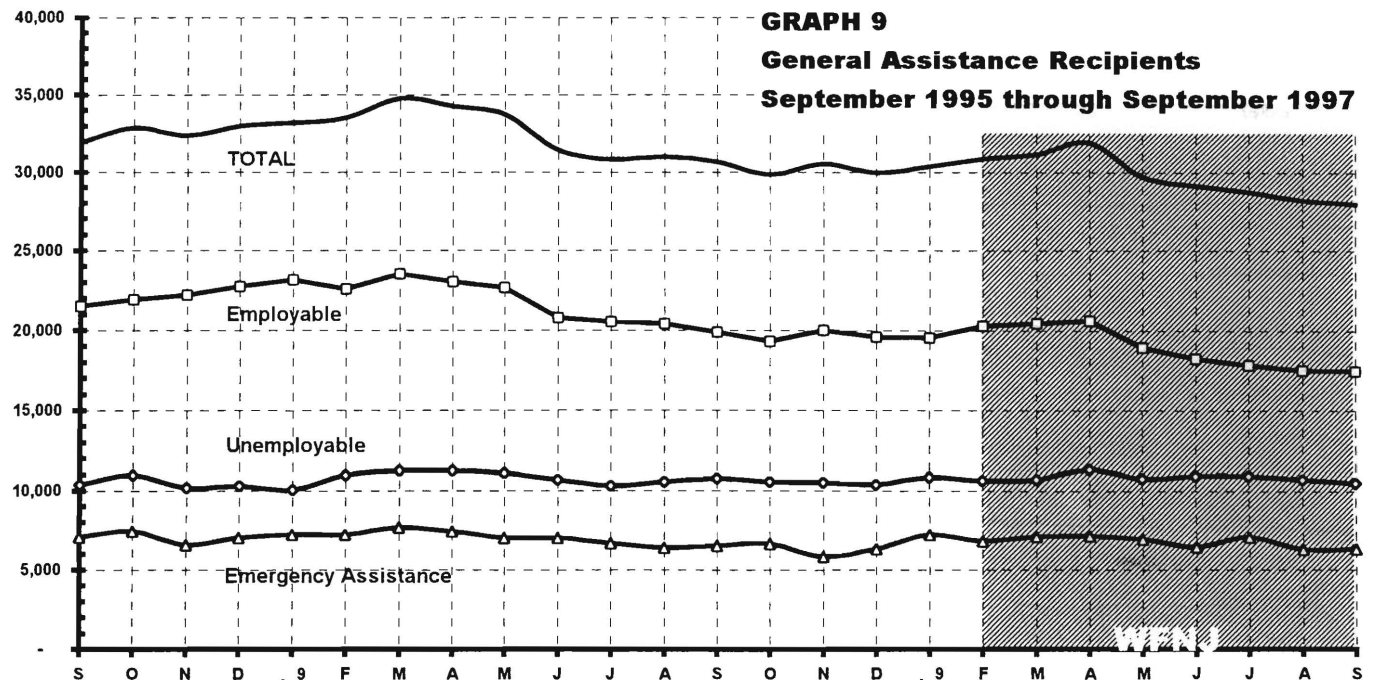
**TABLE 9
GENERAL**

**NUMBER OF EMPLOYABLE AND UNEMPLOYABLE RECIPIENTS
AND EMERGENCY ASSISTANCE PAYMENTS DURING REPORT MONTH**

**ASSISTANCE
PROGRAM**

September 1995 through September 1997

	All Persons Aided			Emergency Assistance Payments		
	Employable	Unemployable	Total	Temporary Rental Assistance	Other GA-EA	Total
1995 SEP	21,525	10,389	31,914	4,110	2,945	7,055
OCT	21,913	10,959	32,872	3,939	3,497	7,436
NOV	22,206	10,171	32,377	4,141	2,422	6,563
DEC	22,732	10,268	33,000	4,086	2,902	6,988
AVERAGE (12 mos.)	22,094	11,178	33,611	4,420	2,947	7,368
1996 JAN	23,140	10,054	33,194	4,421	2,803	7,224
FEB	22,584	10,927	33,511	4,567	2,651	7,218
MAR	23,528	11,243	34,771	4,472	3,185	7,657
APR	23,028	11,221	34,249	4,490	2,944	7,434
MAY	22,657	11,054	33,711	4,064	2,947	7,011
JUN	20,785	10,667	31,452	4,283	2,716	6,999
JUL	20,546	10,282	30,828	3,754	2,922	6,676
AUG	20,416	10,552	30,968	3,958	2,448	6,406
SEP	19,895	10,741	30,636	3,905	2,597	6,502
OCT	19,310	10,514	29,824	3,894	2,728	6,622
NOV	20,019	10,508	30,527	3,662	2,166	5,828
DEC	19,582	10,369	29,951	3,725	2,574	6,299
AVERAGE	21,291	10,678	31,969	4,100	2,723	6,823
1997 JAN	19,562	10,809	30,371	4,182	3,029	7,211
WFNJ FEB	20,274	10,607	30,881	3,994	2,807	6,801
MAR	20,467	10,678	31,145	4,167	2,907	7,074
APR	20,612	11,305	31,917	4,184	2,930	7,114
MAY	18,938	10,758	29,696	4,137	2,789	6,926
JUN	18,218	10,913	29,131	3,850	2,580	6,430
JUL	17,823	10,908	28,731	4,174	2,872	7,046
AUG	17,505	10,685	28,190	3,884	2,377	6,261
SEP	17,441	10,506	27,947	3,906	2,415	6,321
AVERAGE	18,982	10,797	29,779	4,053	2,745	6,798



Data Sources: NJ Division of Family Development, GA Fiscal Unit

TABLE 10**CHILD SUPPORT
AND PATERNITY****CHILD SUPPORT AND PATERNITY COLLECTIONS****State Summary**

COLLECTION SOURCE	Comparison of FFY 1996 and FFY 1997		% change
	10/95-9/96	10/96-9/97	
AFDC & FOSTER CARE			
Federal Tax	\$19,253,881	\$20,252,293	5.2%
State Tax	2,037,298	1,962,763	-3.7%
Unempl. Ins. Ben.	5,647,498	5,084,812	-10.0%
Income Withholding	41,036,144	40,435,581	-1.5%
Other/Own Behalf	15,389,845	18,604,657	20.9%
From Other States	3,370,657	4,361,823	29.4%
For Other States	7,787,022	8,606,406	10.5%
TOTAL COLLECTION	\$94,522,345	\$99,308,335	5.1%
TOTAL DISTRIBUTION	\$98,430,665	\$96,755,293	-1.7%
NON- AFDC			
Federal Tax	\$9,330,910	\$9,221,626	-1.2%
State Tax	2,428,451	2,674,331	10.1%
Unempl. Ins. Ben.	20,116,878	16,729,188	-16.8%
Income Withholding	253,066,788	282,857,360	11.8%
Other/Own Behalf	127,874,018	136,196,479	6.5%
From Other States	20,988,792	26,587,382	26.7%
For Other States	28,705,761	30,639,036	6.7%
TOTAL COLLECTION	\$462,511,598	\$504,905,402	9.2%
TOTAL DISTRIBUTION	\$438,219,256	\$496,203,144	13.2%
TOTAL			
Federal Tax	\$28,584,791	\$29,473,919	3.1%
State Tax	\$4,465,749	\$4,637,094	3.8%
Unempl. Ins. Ben.	\$25,764,376	\$21,814,000	-15.3%
Income Withholding	\$294,102,932	\$323,292,941	9.9%
Other/Own Behalf	\$143,263,863	\$154,801,136	8.1%
From Other States	\$24,359,449	\$30,949,205	27.1%
For Other States	\$36,492,783	\$39,245,442	7.5%
TOTAL COLLECTION	\$557,033,943	\$604,213,737	8.5%
TOTAL DISTRIBUTION	\$536,649,921	\$592,958,437	10.5%

Distributed amount represents collections reported and recognized by the Federal Office of
Child Support Enforcement for calculating incentives and annual report to Congress
Source: DFD Office of Child Support and Paternity Programs

Explanatory Notes

The Department of Human Services Division of Family Development provides basic income and an opportunity to achieve self-sufficiency for individuals and families served by the Division's programs. The Division provides leadership, direction and supervision to those public agencies responsible for administering those programs and plans for and develops policies to promote self-sufficiency.

WORK FIRST NEW JERSEY (WFNJ) - Fully implemented July 1, 1997, this is New Jersey's welfare reform program which responds to the requirements of the Federal Personal Responsibility and Work Opportunity Reconciliation Act (PRWORA) of 1996. PRWORA establishes Temporary Assistance to Needy Families (**TANF**) as the replacement for AFDC. WFNJ includes two segments, WFNJ/TANF for families with children, and WFNJ/GA (General Assistance) for single adults and couples without dependent children. The emphasis is on achieving self-sufficiency and limits lifetime receipt of financial assistance to a total of five years.

WFNJ Statistical Summary (Table 4)

Total Non-Exempt Recipients - Calculation of the number of mandatory individuals (FAMIS report # FB304).

Employment Directed Activities (EDA) - From Activities Summary Report (OMEGA report # RM064). Unduplicated count of persons participating in Community Work Experience Program (**CWEP**), **All Other Training, or Job Search**.

Number of Persons Employed This Month, Still Receiving TANF - From Activities Summary Report (OMEGA report # RM064).

Participants Receiving Child Care Services - From Issuance Disbursement Summary (OMEGA report # RM703). Total number of active participants who show receipt of **Child Care**.

Number of Persons Closed on FAMIS Due to Employment- From FAMIS report # FM463.

Post TANF and Receiving Child Care - Persons no longer in receipt of TANF but still receiving child care. From Issuance Disbursement Summary (OMEGA report # RM703).

AID TO FAMILIES WITH DEPENDENT CHILDREN (AFDC) - Replaced by WFNJ/TANF July 1, 1997, AFDC provided financial assistance for dependent children and their natural or adoptive parents, or certain other relatives recognized as taking the place of a parent.

Regular AFDC (C Segment) - assistance when only one parent is in the home due to death or absence, or both parents are in the home but at least one is incapacitated.

Unemployed Parents (F Segment) - assistance when both parents are in the home, neither is incapacitated and the primary wage earner meets the federally defined criteria for unemployment.

State AFDC (N Segment) - assistance when both parents are in the home, neither is incapacitated, and the primary wage earner does not meet the federal definition of unemployment.

Medicaid Only - families no longer receiving AFDC financial assistance but remaining eligible for Medicaid under applicable provisions which extend coverage beyond period of AFDC assistance.

FOOD STAMP PROGRAM (FS) - Authorized by Congress as a nutritional supplement program to provide low income households with more food of greater variety and better nutrition. Program eligibility is based on household income, resources, and expenses for medical, shelter, and dependent care. CWA staff refer certain recipients to the New Jersey Department of Labor for participation in the Food Stamp Employment and Training Program.

EMERGENCY ASSISTANCE (EA) - Payments to those eligible for WFNJ/TANF or WFNJ/GA, authorized during the 30 consecutive days immediately following the emergency (defined as a substantial loss of shelter, food, clothing, or household furnishings by fire, flood or other similar disaster) or if the eligible individual or family is in an imminent or actual state of homelessness.

TABLE 11
GENERAL
ASSISTANCE
PROGRAM

EMPLOYABLE AND UNEMPLOYABLE RECIPIENTS
AND EMERGENCY ASSISTANCE RECIPIENTS
COUNTIES AND 21 LARGEST MUNICIPALITIES

September 1997

County/ Municipality	Total Persons Aided			Emergency Assistance Payments		
	Employable	Unemployable	Total	Temporary Rental Assist.	Other GA-EA	Total
ATLANTIC	826	481	1,307	51	26	77
BERGEN	415	466	881	233	86	319
BURLINGTON	256	398	654	122	92	214
CAMDEN	1,895	1,151	3,046	196	199	395
CAPE MAY	45	82	127	14	7	21
CUMBERLAND	274	140	414	3	8	11
ESSEX	6,165	2,246	8,411	953	1,249	2,202
GLOUCESTER	133	146	279	20	18	38
HUDSON	769	1,086	1,855	161	23	184
HUNTERDON	50	61	111	26	12	38
MERCER	1,221	865	2,086	242	209	451
MIDDLESEX	385	478	863	76	26	102
MONMOUTH	429	564	993	238	30	268
MORRIS	70	176	246	38	15	53
OCEAN	435	339	774	271	100	371
PASSAIC	2,117	683	2,800	462	164	626
SALEM	120	69	189	9	29	38
SOMERSET	83	78	161	48	3	51
SUSSEX	31	48	79	17	5	22
UNION	1,687	884	2,571	707	113	820
WARREN	35	65	100	19	1	20
TOTAL NJ	17,441	10,506	27,947	3,906	2,415	6,321
Atlantic City	718	281	999	36	21	57
Mount Holly	103	97	200	44	63	107
Camden	1,665	800	2,465	136	148	284
Vineland	143	66	209	2	5	7
East Orange	423	358	781	196	23	219
Irvington	356	143	499	59	6	65
Montclair	101	62	163	29	12	41
Newark	4,856	1,448	6,304	589	1,203	1,792
Orange	311	70	381	48	0	48
Bayonne	102	65	167	3	0	3
Hoboken	94	130	224	17	1	18
Jersey City	464	483	947	83	17	100
Trenton	1,131	756	1,887	204	197	401
Perth Amboy	85	90	175	9	3	12
Asbury Park	139	81	220	45	7	52
Long Branch	56	102	158	35	1	36
Lakewood	241	119	360	160	12	172
Passaic	459	213	672	163	40	203
Paterson	1,587	325	1,912	255	101	356
Elizabeth	1,123	442	1,565	542	63	605
Plainfield	218	150	368	52	4	56
Total	14,375	6,281	20,656	2,707	1,927	4,634

Source: NJ Division of Family Development, GA Fiscal Unit