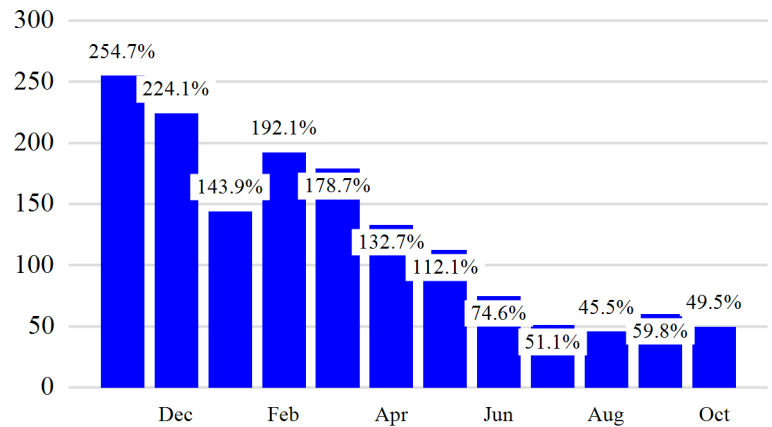


Revenue Passengers

	Curr Month	% Change
	11,678,387	49.5% ▲
Domestic	8,132,133	35.8%
International	3,546,254	94.5%
Non-Revenue	329,695	43.4%

Load Factors	Curr Month	Avg Load Factor
Domestic	82.4%	81.8% Avg Load Factor
International	80.6%	

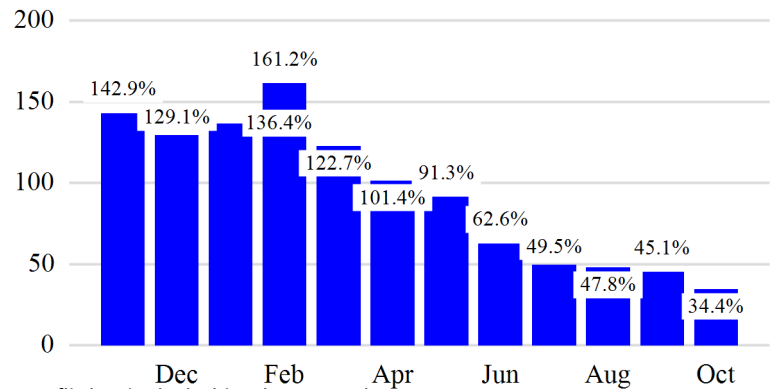
Year over Year % Change in Revenue Passengers - 12 Months



Total Flights

	Curr Month	% Change
	104,702	32.3% ▲
Excl GA	101,411	34.4% ▲
Domestic	80,218	35.6%
International	21,193	30.2%
Gen Aviation	3,291	-11.7%
Cargo Flights*	3,160	-16.2%

Year over Year % Change in Total Flights (Excl GA) - 12 Months

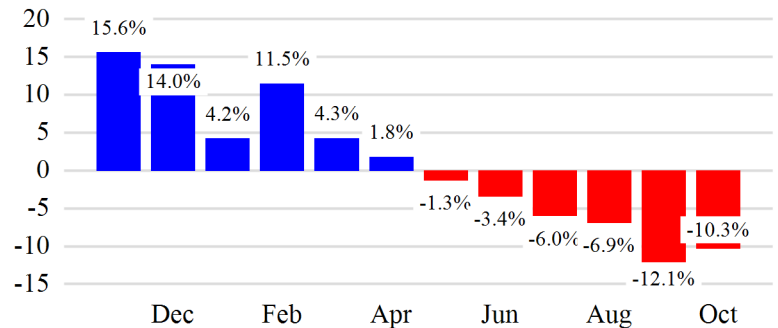


* Cargo flights included in above totals

Cargo (Short Tons)

	Curr Month	% Change
	197,175	-10.3% ▼
Domestic	83,467	-7.1%
International	113,708	-12.5%
Mail	11,364	-12.2%

Year over Year % Change in Cargo - 12 Months



Top 5 Declines in Revenue Passengers by Airline

Airline	Pax Decline	% Decline
FRONTIER AIRLINES	(31,832)	-44.0%
COPA AIRLINES	(5,009)	-16.0%
EASTERN	(2,979)	-94.0%
Avianca El Salvador	(365)	-2.0%

Top 5 Increases in Revenue Passengers by Airline

Airline	Pax Increase	% Increase
DELTA	708,464	37.0%
UNITED	704,113	33.0%
AMERICAN	572,221	56.0%
JETBLUE AIRWAYS	509,872	38.0%
ALASKA AIRLINES	127,472	141.0%

Airport Summary Statistics

JFK Summary

	Current Month	YoY %
Total Revenue Pax	5,057,408	70.0
Total Flights Including GA	38,149	40.0
Total Cargo (Short Tons)	132,399	-8.2

EWR Summary

	Current Month	YoY %
Total Revenue Pax	3,916,016	29.0
Total Flights Including GA	33,909	16.0
Total Cargo (Short Tons)	62,230	-14.6

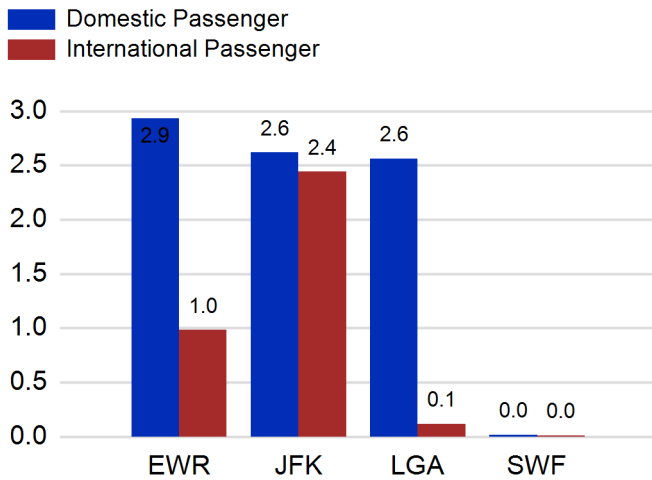
LGA Summary

	Current Month	YoY %
Total Revenue Pax	2,679,151	47.0
Total Flights Including GA	30,351	50.0
Total Cargo (Short Tons)	572	-4.1

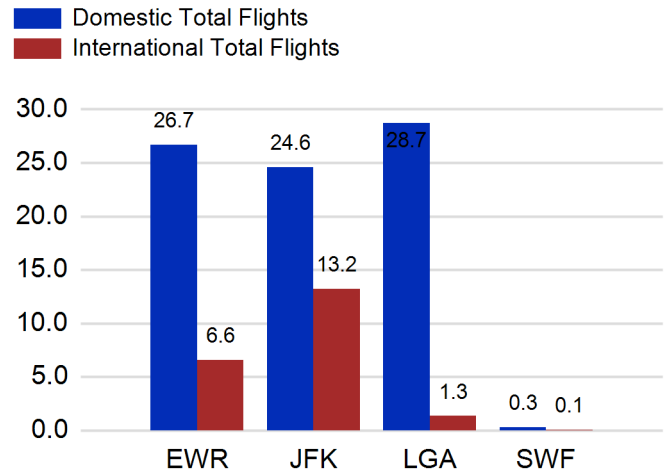
SWF Summary

	Current Month	YoY %
Total Revenue Pax	25,812	156.0
Total Flights Including GA	2,293	-19.0
Total Cargo (Short Tons)	1,974	-3.7

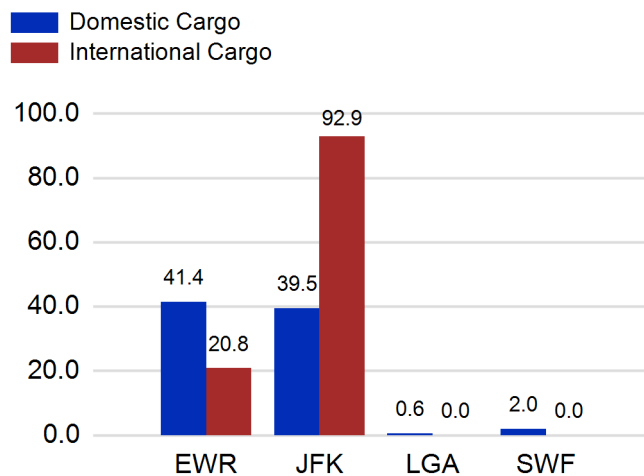
Total Passengers by Airport (Millions)



Total Flights by Airport (Thousands)



Total Cargo by Airport (Thousands of Short Tons)



12 Months Ending Passenger & Freight Statistics

Top 20 Airlines Ranking by Passengers & Freight: 12 Months Ending Oct 2022

Airline Name	Domestic	International	Total Pax	% of Tot	Airline Name	Short Tons	% of Tot
UNITED	23,713,771	6,976,531	30,690,302	24.73%	FEDERAL EXPRESS	414,534	17.63%
DELTA	23,349,265	4,470,803	27,820,068	22.41%	UNITED PARCEL	210,708	8.96%
JETBLUE AIRWAYS	15,072,952	5,536,959	20,609,911	16.60%	United	202,130	8.60%
AMERICAN	14,416,137	3,019,209	17,435,346	14.05%	DELTA	99,819	4.25%
SPIRIT AIRLINES	3,879,292	0	3,879,292	3.13%	AMERICAN	97,387	4.14%
SOUTHWEST AIRLINES	2,836,649	0	2,836,649	2.29%	KALITTA AIR LLC	86,614	3.68%
ALASKA AIRLINES	2,263,030	0	2,263,030	1.82%	ATLAS AIR	65,463	2.78%
BRITISH AIRWAYS	0	1,101,927	1,101,927	0.89%	ABX AIR INC	65,330	2.78%
AIR CANADA	0	1,072,044	1,072,044	0.86%	CARGOLUX AIRLINES	59,734	2.54%
AIR FRANCE	0	982,470	982,470	0.79%	KOREAN	57,629	2.45%
EMIRATES AIRLINES	0	947,912	947,912	0.76%	AIR TRANSPORT INT'L.(BAX Inc.)	52,091	2.22%
VIRGIN ATLANTIC	0	751,477	751,477	0.61%	CHINA AIRLINES (CAL)	47,630	2.03%
LUFTHANSA	0	746,778	746,778	0.60%	TURKISH AIR	43,157	1.84%
TURKISH AIR	0	716,060	716,060	0.58%	BRITISH AIRWAYS	42,621	1.81%
FRONTIER AIRLINES	646,133	19,842	665,975	0.54%	EVA	36,132	1.54%
Avianca Cargo	0	637,246	637,246	0.51%	VIRGIN ATLANTIC	35,471	1.51%
AER LINGUS	0	566,885	566,885	0.46%	LUFTHANSA CARGO	33,429	1.42%
EL AL	0	471,149	471,149	0.38%	AIR FRANCE	32,183	1.37%
LAN AIRLINES	0	461,155	461,155	0.37%	CATHAY PACIFIC	30,606	1.30%
QATAR AIRWAYS	0	451,405	451,405	0.36%	EUROPEAN AIR TRANSPORT	27,434	1.17%

Passengers & Freight by Market - 12 Months Ending

Market	Passengers	Freight (Short Tons)
TRANSATLANTIC	20,775,470	924,984
CANADA	2,195,475	282
CARIBBEAN + BERMUDA	7,391,700	14,049
CENTRAL AND SOUTH AMERICA	3,877,689	63,376
DOMESTIC	84,451,706	996,523
MEXICO	2,175,540	13,147
TRANSPACIFIC	983,242	330,486
PUERTO RICO	2,273,305	8,529

Additional Data

Airline Schedules (ADI): Non-Stop Destinations

	Region	Flights (Daily)	Cities
Domestic	Domestic	2476.4	109
	Puerto Rico	27.7	3
	Total	2,504.1	112.00
International	Canada	134.3	7
	Caribbean & Bermuda	110.4	22
	Central & South America	57.6	16
	Mexico	37.3	5
	Trans-Atlantic	321.9	55
	Trans-Pacific	24.2	9
	Total	685.5	114.00
Total	3,189.6	226.00	

Airline Schedules (ADI): Carriers & Aircraft Type

	Aircraft Type	Flights (Daily)	Carriers
Domestic	Commuter	942.5	4
	General Aviation	2.0	1
	Narrow Body	1496.3	10
	Unknown	1.3	1
	Wide Body	62.1	4
	Total	2,504.1	20.00
International	Commuter	102.7	5
	Narrow Body	252.9	23
	Wide Body	329.9	55
	Total	685.5	83.00
Total	Total	3,189.6	103.00

Passenger Demographics (ACI ASQ Surveys - 2021)

Connect

Local Origin/Destination	78.6%
Connecting	21.4%

Trip Type

Business	14.0%
Leisure	86.0%

Gender

M	49.6%
F	50.4%

Transport Mode

Bus/Shuttle	4.7%
Other	18.7%
Private/Company Car	37.5%
Rail/Subway	7.3%
Rental Car	4.6%
Taxi/Limo	27.2%

Annual Flights

1-2	61.5%
3-5	24.9%
6-10	9.0%
11-20	2.8%
21+	1.8%

Residency

United States	81.0%
Other	19.0%

Ground Transportation

	Curr Month	% Change
<i>Paid Parked Cars</i>	360,007	10.0
<i>GTC Bookings</i>	0	
<i>Airport Coach Passengers</i>	37,695	93.8
<i>Taxis Dispatched</i>	390,320	38.3

	Curr Month	% Change
<i>Total Air Train Passengers</i>	2,280,001	33.7
<i>Paid Howard Beach Passengers</i>	124,207	49.2
<i>Paid Jamaica Passengers</i>	508,586	65.8
<i>Paid EWR Passengers</i>	216,292	27.7
<i>On-Airport (Unpaid) Passengers</i>	1,430,916	24.9

Airlines for American Carriers (USA)

	Curr Month	% Change
<i>Freight:revenue ton miles (000)</i>	0	

Regional Airports: Other

	Curr Month	% Change
<i>TEB flight movements</i>	13,338	-26.2
<i>ISP Total passengers</i>	0	-100.0
<i>HPN Total passengers</i>	0	-100.0