

January 2022 Traffic Report

AVIATION DEPARTMENT (Data As Of 3/2/2022)

REGION

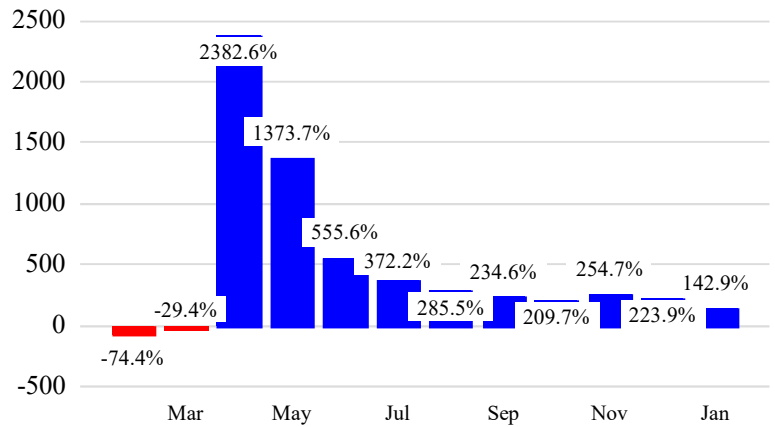


Revenue Passengers

	Curr Month	% Change	
	6,794,809	142.9%	▲
Domestic	4,823,328	144.7%	
International	1,971,481	138.5%	
Non-Revenue	222,717	95.5%	

Load Factors	Curr Month	
Domestic	51.2%	
International	56.2%	
		52.5% Avg Load Factor

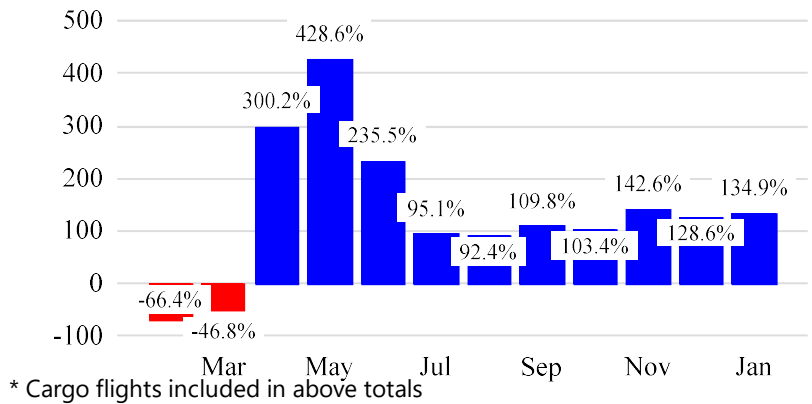
Year over Year % Change in Revenue Passengers - 12 Months



Total Flights

	Curr Month	% Change	
	89,543	128.6%	▲
Excl GA	87,014	134.9%	▲
Domestic	70,205	162.0%	
International	16,809	64.1%	
Gen Aviation	2,529	19.0%	
Cargo Flights*	2,871	-23.2%	

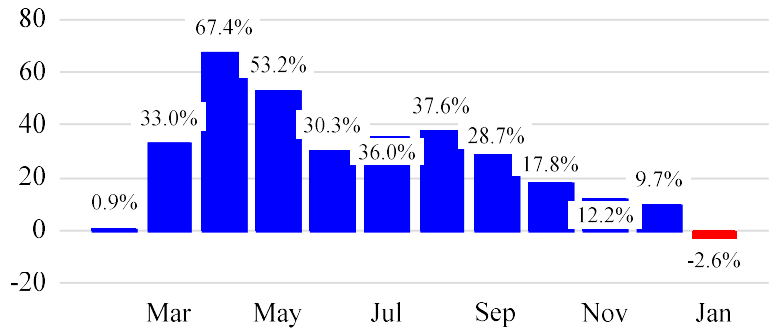
Year over Year % Change in Total Flights (Excl GA) - 12 Months



Cargo (Short Tons)

	Curr Month	% Change	
	164,313	-2.6%	▼
Domestic	76,951	-7.4%	
International	87,362	2.1%	
Mail	12,335	-9.2%	

Year over Year % Change in Cargo - 12 Months



Top 5 Declines in Revenue Passengers by Airline

Airline	Pax Decline	% Decline
ROYAL AIR MAROC	(6,639)	-93.0%
EASTERN	(4,296)	-62.0%
EVA	(392)	-20.0%
CATHAY PACIFIC	(232)	-14.0%
ELITE AIRWAYS	(138)	-24.0%

Top 5 Increases in Revenue Passengers by Airline

Airline	Pax Increase	% Increase
UNITED	979,960	123.0%
DELTA	926,678	159.0%
AMERICAN	612,272	199.0%
JETBLUE AIRWAYS	607,857	104.0%
SPIRIT AIRLINES	122,409	86.0%

January 2022 Traffic Report

AVIATION DEPARTMENT (Data As Of 3/2/2022)

REGION



Airport Summary Statistics

JFK Summary

	Current Month	YoY %
Total Revenue Pax	2,898,141	161.0
Total Flights Including GA	32,153	112.0
Total Cargo (Short Tons)	103,196	-3.8

EWR Summary

	Current Month	YoY %
Total Revenue Pax	2,471,500	106.0
Total Flights Including GA	29,000	92.0
Total Cargo (Short Tons)	59,123	0.3

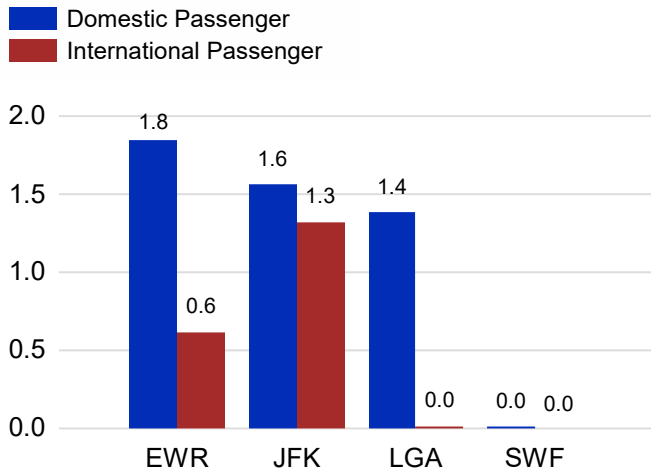
LGA Summary

	Current Month	YoY %
Total Revenue Pax	1,410,651	187.0
Total Flights Including GA	26,512	282.0
Total Cargo (Short Tons)	239	-43.1

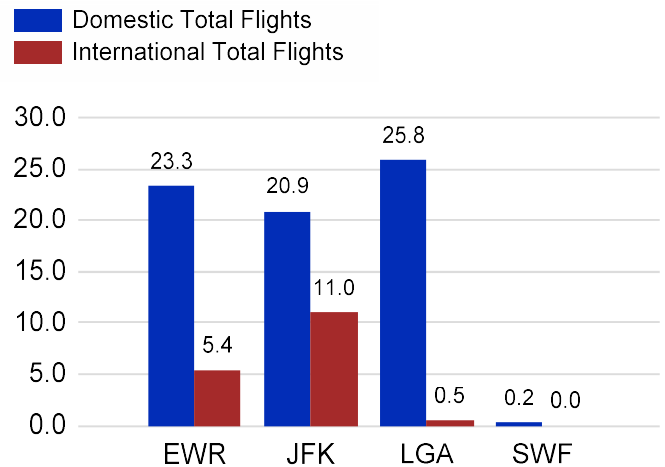
SWF Summary

	Current Month	YoY %
Total Revenue Pax	14,517	448.0
Total Flights Including GA	1,878	-8.0
Total Cargo (Short Tons)	1,755	-11.9

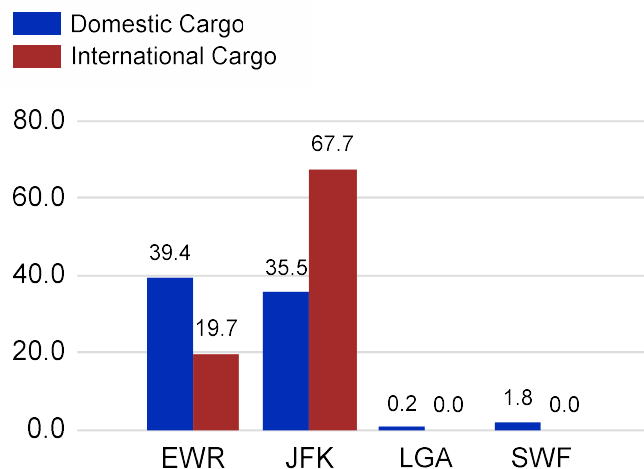
Total Passengers by Airport (Millions)



Total Flights by Airport (Thousands)



Total Cargo by Airport (Thousands of Short Tons)



12 Months Ending Passenger & Freight Statistics

Top 20 Airlines Ranking by Passengers & Freight: 12 Months Ending Jan 2022

Airline Name	Domestic	International	Total Pax	% of Tot	Airline Name	Short Tons	% of Tot
UNITED	15,560,349	4,525,262	20,085,611	25.25%	FEDERAL EXPRESS	443,746	18.90%
DELTA	15,754,431	2,631,626	18,386,057	23.12%	UNITED	222,920	9.50%
JETBLUE AIRWAYS	11,071,496	4,385,718	15,457,214	19.43%	UNITED PARCEL	214,043	9.12%
AMERICAN	9,320,936	1,252,495	10,573,431	13.29%	DELTA	91,552	3.90%
SPIRIT AIRLINES	2,852,901	0	2,852,901	3.59%	ATLAS AIR	84,562	3.60%
SOUTHWEST AIRLINES	1,683,120		1,683,120	2.12%	KALITTA AIR LLC	83,211	3.54%
ALASKA AIRLINES	1,066,986		1,066,986	1.34%	AIR TRANSPORT INT'L.(BAX Inc.)	76,927	3.28%
FRONTIER AIRLINES	1,003,533	54,549	1,058,082	1.33%	AMERICAN	72,375	3.08%
TURKISH AIR		508,713	508,713	0.64%	CARGOLUX AIRLINES	60,491	2.58%
EMIRATES AIRLINES		497,250	497,250	0.63%	KOREAN	59,846	2.55%
AIR CANADA		440,420	440,420	0.55%	CHINA AIRLINES (CAL)	57,979	2.47%
AVIANCA		419,188	419,188	0.53%	CATHAY PACIFIC	55,646	2.37%
COPA AIRLINES		331,389	331,389	0.42%	ABX AIR INC	50,869	2.17%
QATAR AIRWAYS		323,859	323,859	0.41%	LUFTHANSA CARGO	35,873	1.53%
LUFTHANSA CARGO		311,073	311,073	0.39%	SAUDI ARABIAN AIRLINES	31,729	1.35%
AIR FRANCE		301,515	301,515	0.38%	TURKISH AIR	30,535	1.30%
BRITISH AIRWAYS		298,675	298,675	0.38%	BRITISH AIRWAYS	29,928	1.27%
AEROMEXICO		274,672	274,672	0.35%	VIRGIN ATLANTIC	29,751	1.27%
EL AL		259,802	259,802	0.33%	QATAR AIRWAYS	27,599	1.18%
ALLEGiant AIR	249,273		249,273	0.31%	AIR FRANCE	27,134	1.16%

Passengers & Freight by Market - 12 Months Ending

Market	Passengers	Freight (Short Tons)
TRANSATLANTIC	9,062,397	855,411
CANADA	617,131	1,652
CARIBBEAN + BERMUDA	6,154,269	14,054
CENTRAL AND SOUTH AMERICA	2,724,935	36,638
DOMESTIC	56,460,260	1,040,584
MEXICO	1,860,475	10,327
TRANSPACIFIC	361,620	379,327
PUERTO RICO	2,294,387	9,704

Additional Data

Airline Schedules (ADI): Non-Stop Destinations

	Region	Flights (Daily)	Cities
Domestic	Domestic	2369.4	104
	Puerto Rico	33.5	3
	Total	2,402.9	107.00
International	Canada	70.2	4
	Caribbean & Bermuda	147.3	24
	Central & South America	83.9	19
	Mexico	40.2	5
	Trans-Atlantic	198.5	48
	Trans-Pacific	14.8	9
	Total	554.8	109.00
Total		2,957.7	216.00

Airline Schedules (ADI): Carriers & Aircraft Type

	Aircraft Type	Flights (Daily)	Carriers
Domestic	Commuter	941.3	4
	General Aviation	2.0	1
	Narrow Body	1369.8	10
	Wide Body	89.8	4
	Total	2,402.9	19.00
International	Commuter	60.4	5
	Narrow Body	275.4	21
	Wide Body	219.0	51
	Total	554.8	77.00
Total	Total	2,957.7	96.00

Passenger Demographics (ACI ASQ Surveys - 2021)

Connect		Trip Type		Gender	
Local Origin/Destination	83.7%	Business	21.9%	F	47.6%
Connecting	16.3%	Leisure	78.1%	M	52.4%
Transport Mode		Annual Flights		Residency	
Bus/Shuttle	9.7%	1-2	49.7%	United States	22.9%
Other	11.3%	3-5	29.8%	Other	77.1%
Private/Company Car	42.0%	6-10	12.6%		
Rail/Subway	6.8%	11-20	4.7%		
Rental Car	10.1%	21+	3.2%		
Taxi/Limo	20.1%				

Ground Transportation

	Curr Month	% Change		Curr Month	% Change
<i>Paid Parked Cars</i>	312,919	89.2	<i>Total Air Train Passengers</i>	1,468,110	122.5
<i>GTC Bookings</i>	0		<i>Paid Howard Beach Passengers</i>	62,587	183.6
<i>Airport Coach Passengers</i>	0	-100.0	<i>Paid Jamaica Passengers</i>	250,457	198.1
<i>Taxis Dispatched</i>	143,081	99.8	<i>Paid EWR Passengers</i>	107,119	163.3
			<i>On-Airport (Unpaid) Passengers</i>	1,047,947	104.2

Airlines for American Carriers (USA)

	Curr Month	% Change
<i>Freight:revenue ton miles (000)</i>	0	

Regional Airports: Other

	Curr Month	% Change
<i>TEB flight movements</i>	0	-100.0
<i>ISP Total passengers</i>	95,214	164.6
<i>HPN Total passengers</i>	86,279	-37.2