

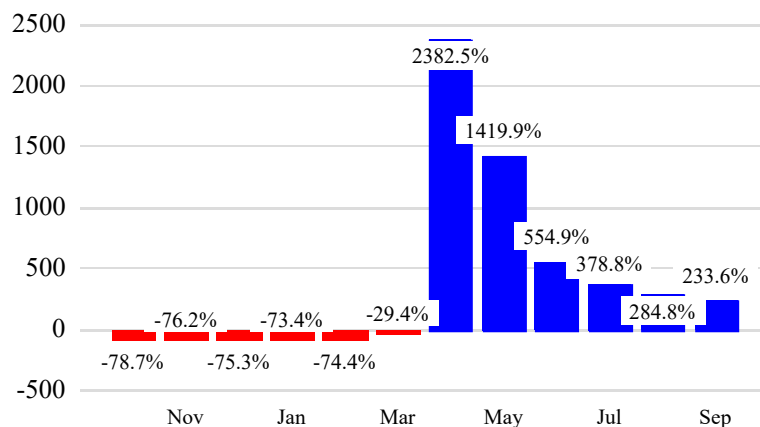
Revenue Passengers

	Curr Month	% Change
	6,867,447	233.6% ▲
Domestic	4,967,890	223.8%
International	1,899,557	262.3%
Non-Revenue	192,876	59.5%

Load Factors	Curr Month
Domestic	75.3%
International	59.7%

70.2% Avg Load Factor

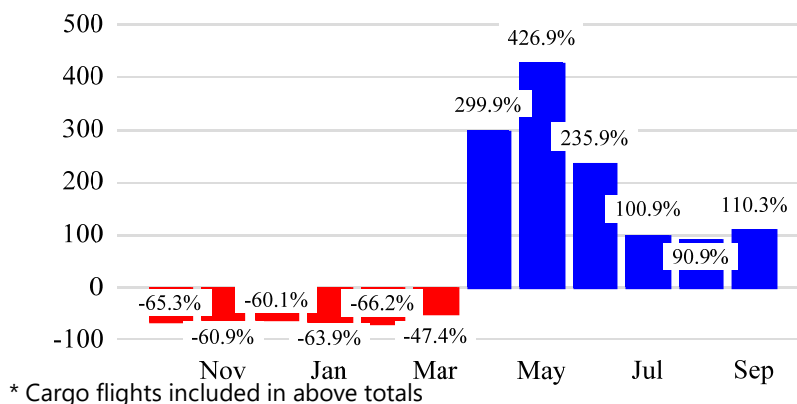
Year over Year % Change in Revenue Passengers - 12 Months



Total Flights

	Curr Month	% Change
	70,785	104.8% ▲
Excl GA	66,541	110.3% ▲
Domestic	50,340	107.2%
International	16,201	120.7%
Gen Aviation	4,244	45.1%
Cargo Flights*	3,732	-2.4%

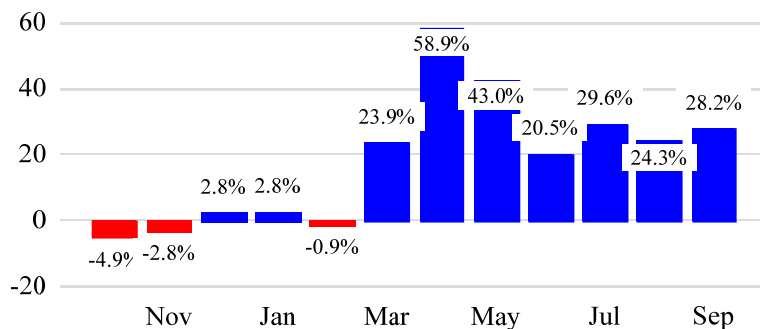
Year over Year % Change in Total Flights (Excl GA) - 12 Months



Cargo (Short Tons)

	Curr Month	% Change
	203,009	28.2% ▲
Domestic	95,960	19.7%
International	107,049	36.8%
Mail	8,670	-21.3%

Year over Year % Change in Cargo - 12 Months



Top 5 Declines in Revenue Passengers by Airline

Airline	Pax Decline	% Decline
EASTERN	(6,337)	-48.0%
United	(3,753)	-1.0%
EVA	(367)	-19.0%
IBERIA	(265)	-10.0%
CAPE AIR	(105)	-39.0%

Top 5 Increases in Revenue Passengers by Airline

Airline	Pax Increase	% Increase
DELTA	1,566,649	3057.0%
JETBLUE AIRWAYS	914,819	782.0%
AMERICAN	559,409	690.0%
SOUTHWEST AIRLINES	103,562	230.0%
SPIRIT AIRLINES	99,511	151.0%

Airport Summary Statistics

JFK Summary

	Current Month	YoY %
Total Revenue Pax	2,873,210	295.0
Total Flights Including GA	26,825	122.0
Total Cargo (Short Tons)	137,149	36.9

EWR Summary

	Current Month	YoY %
Total Revenue Pax	2,531,757	172.0
Total Flights Including GA	24,497	82.0
Total Cargo (Short Tons)	69,531	8.3

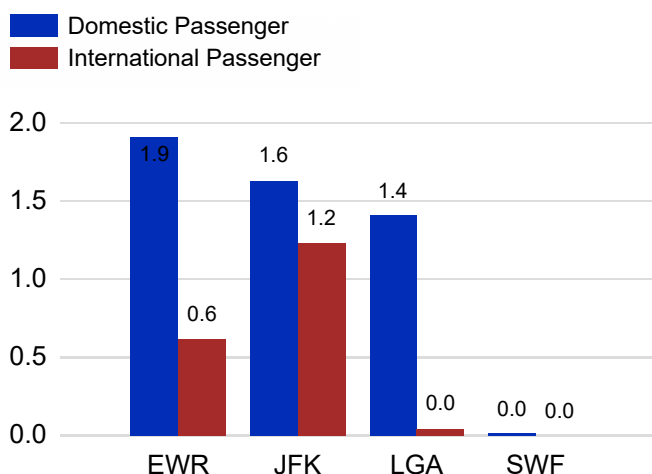
LGA Summary

	Current Month	YoY %
Total Revenue Pax	1,454,194	265.0
Total Flights Including GA	16,384	134.0
Total Cargo (Short Tons)	718	63.5

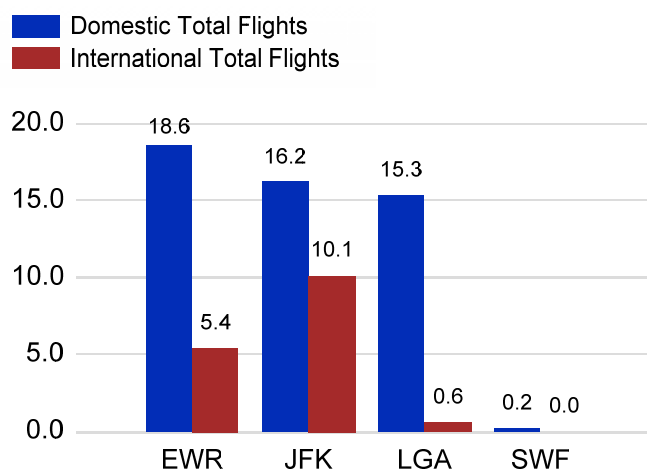
SWF Summary

	Current Month	YoY %
Total Revenue Pax	8,286	119.0
Total Flights Including GA	3,079	66.0
Total Cargo (Short Tons)	4,282	-7.0

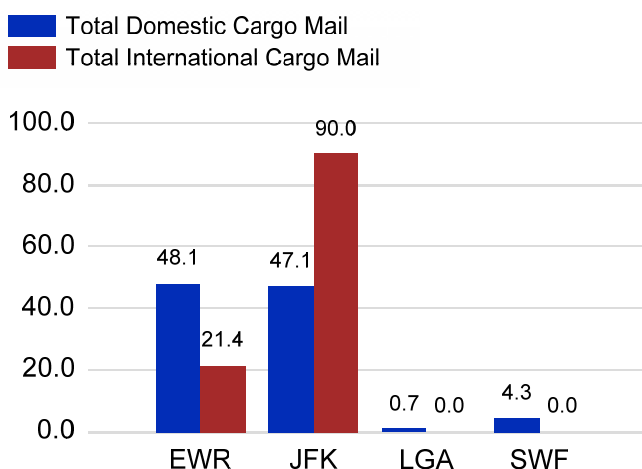
Total Passengers by Airport (Millions)



Total Flights by Airport (Thousands)



Total Cargo by Airport (Thousands of Short Tons)



12 Months Ending Passenger & Freight Statistics

Top 20 Airlines Ranking by Passengers & Freight: 12 Months Ending Sep 2021

Airline Name	Domestic	International	Total Pax	% of Tot	Airline Name	Short Tons	% of Tot
UNITED	11,189,030	3,389,365	14,578,395	25.40%	FEDERAL EXPRESS	451,454	20.57%
DELTA	11,134,321	2,046,373	13,180,694	22.97%	UNITED PARCEL	205,652	9.37%
JETBLUE AIRWAYS	8,288,596	3,646,152	11,934,748	20.80%	UNITED	202,136	9.21%
AMERICAN	6,289,659	684,750	6,974,409	12.15%	ATLAS AIR	85,357	3.89%
SPIRIT AIRLINES	2,394,111	0	2,394,111	4.17%	AIR TRANSPORT INT'L.(BAX Inc.)	83,531	3.81%
SOUTHWEST AIRLINES	1,130,869		1,130,869	1.97%	DELTA	80,270	3.66%
FRONTIER AIRLINES	779,727	32,519	812,246	1.42%	KALITTA AIR LLC	77,942	3.55%
ALASKA AIRLINES	616,489		616,489	1.07%	AMERICAN	57,753	2.63%
COPA AIRLINES		438,745	438,745	0.76%	CATHAY PACIFIC	57,445	2.62%
TURKISH AIR		400,457	400,457	0.70%	CARGOLUX AIRLINES	56,240	2.56%
AIR CANADA		285,608	285,608	0.50%	KOREAN	55,858	2.55%
EMIRATES AIRLINES		264,660	264,660	0.46%	AIR CHINA INTERNATIONAL	44,987	2.05%
QATAR AIRWAYS		244,355	244,355	0.43%	ABX AIR INC	41,338	1.88%
ALLEGiant AIR	196,400		196,400	0.34%	QATAR AIRWAYS	37,685	1.72%
LUFTHANSA CARGO		191,358	191,358	0.33%	LUFTHANSA CARGO	35,912	1.64%
EL AL		185,580	185,580	0.32%	VIRGIN ATLANTIC	31,572	1.44%
AIR INDIA		182,334	182,334	0.32%	CHALLENGE AIRLINES (formerly ACE BELGIUM)	29,162	1.33%
AIR FRANCE		181,577	181,577	0.32%	TURKISH AIR	29,068	1.32%
AEROMEXICO		176,424	176,424	0.31%	CHINA AIRLINES (CAL)	24,371	1.11%
AEROFLOT		160,052	160,052	0.28%	BRITISH AIRWAYS	24,158	1.10%

Passengers & Freight by Market - 12 Months Ending

Market	Passengers	Freight (Short Tons)
TRANSATLANTIC	5,915,934	755,902
CANADA	301,455	2,144
CARIBBEAN + BERMUDA	5,168,077	12,879
CENTRAL AND SOUTH AMERICA	2,041,922	28,720
DOMESTIC	40,225,692	1,028,151
MEXICO	1,526,886	9,512
TRANSPACIFIC	288,144	348,249
PUERTO RICO	1,923,608	9,196

Additional Data

Airline Schedules (ADI): Non-Stop Destinations

	Region	Flights (Daily)	Cities
Domestic	Domestic	1604.1	100
	Puerto Rico	33.7	2
	Total	1,637.8	102.00
International	Canada	50.1	3
	Caribbean & Bermuda	137.0	18
	Central & South America	64.4	17
	Mexico	34.9	5
	Trans-Atlantic	196.5	51
	Trans-Pacific	14.2	9
	Total	497.1	103.00
Total		2,134.9	205.00

Airline Schedules (ADI): Carriers & Aircraft Type

	Aircraft Type	Flights (Daily)	Carriers
Domestic	Commuter	614.8	5
	Narrow Body	937.4	10
	Wide Body	85.6	6
International	Total	1,637.8	21.00
	Commuter	43.7	5
	Narrow Body	233.1	16
	Wide Body	220.3	55
Total		497.1	76.00
Total		2,134.9	97.00

Passenger Demographics (ACI ASQ Surveys - 2019)

Connect		Trip Type		Gender	
Local Origin/Destination	83.7%	Business	21.9%	F	47.6%
Connecting	16.3%	Leisure	78.1%	M	52.4%
Transport Mode		Annual Flights		Residency	
Bus/Shuttle	9.7%	1-2	49.7%	United States	22.9%
Other	11.3%	3-5	29.8%	Other	77.1%
Private/Company Car	42.0%	6-10	12.6%		
Rail/Subway	6.8%	11-20	4.7%		
Rental Car	10.1%	21+	3.2%		
Taxi/Limo	20.1%				

Ground Transportation

	Curr Month	% Change		Curr Month	% Change
<i>Paid Parked Cars</i>	318,874	116.6	<i>Total Air Train Passengers</i>	10,843,872	33.6
<i>GTC Bookings</i>	0		<i>Paid Howard Beach Passengers</i>	469,541	10.4
<i>Airport Coach Passengers</i>	17,756		<i>Paid Jamaica Passengers</i>	1,708,600	16.0
<i>Taxis Dispatched</i>	259,379	369.5	<i>Paid EWR Passengers</i>	821,071	27.1
			<i>On-Airport (Unpaid) Passengers</i>	7,846,835	37.3

Airlines for American Carriers (USA)

	Curr Month	% Change
<i>Freight:revenue ton miles (000)</i>	0	

Regional Airports: Other

	Curr Month	% Change
<i>TEB flight movements</i>	12,106	73.8
<i>ISP Total passengers</i>	94,368	419.7
<i>HPN Total passengers</i>	63,806	