



State of New Jersey

2014-15

29-3800-050

OVERVIEW

OCEAN
OCEAN GATE BORO

GRADE SPAN PK-06

OCEAN GATE ELEMENTARY SCHOOL
126 WEST ARVERNE AVENUE
OCEAN GATE, NJ 08740-0478

The New Jersey Department of Education (NJDOE) is pleased to present these annual reports of School Performance. These reports are designed to inform parents, educators and communities about how well a school is performing and preparing its students for college and careers.

In particular, the School Performance Reports seek to:

- **Focus** attention on metrics that are indicative of college and career readiness.
- **Benchmark** a school's performance against other peer schools that are educating similar students, against statewide outcomes, and against state targets to illuminate and build upon a school's strengths and identify areas for improvement.
- **Improve** educational outcomes for students by providing both longitudinal and growth data so that progress can be measured as part of an individual school's efforts to engage in continuous improvement.

While the New Jersey School Performance Reports seek to bring more information to educators and stakeholders about the performance of schools, they do not seek to distill the performance of schools into a single metric, a single score, or a simplified conclusion. Instead, the intention is that educators and stakeholders will engage in deep, lengthy conversations about the full range of the data presented. As educators know well, measuring school performance is both an art and a science. While the School Performance Report brings attention to important student outcomes, NJDOE does not collect data about other essential elements of a school, such as the provision of opportunities to participate and excel in extracurricular activities; the development of non-cognitive skills like time management and perseverance; the pervasiveness of a positive school culture or climate; or the attainment of other employability and technical skills, as many of these data are beyond both the capacity and resources of schools to measure and collect well.

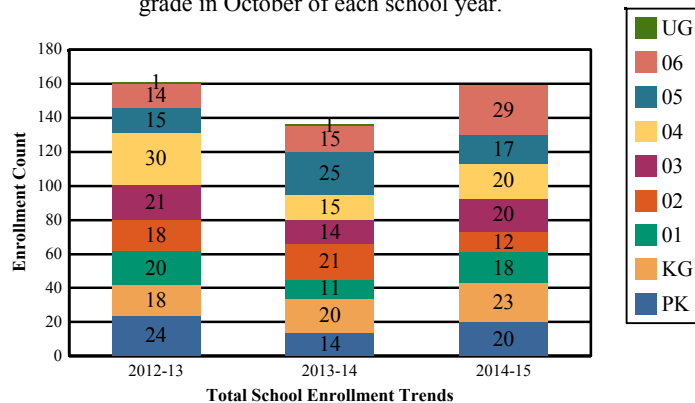
To learn more about New Jersey's school accountability system, please visit: <http://www.nj.gov/education/educators/>.

DEMOGRAPHIC INFORMATION

OCEAN
OCEAN GATE BORO

Enrollment by Grade

This graph presents the count of students who were 'on roll' by grade in October of each school year.

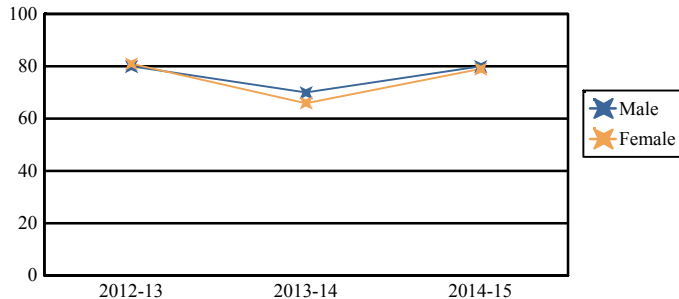


Note: "UG" represents the count of students who are 'on roll' in this school but who are educated in ungraded classrooms, meaning that the classrooms may contain students from multiple grade levels.

Total School Enrollment	
2012-13	161
2013-14	136
2014-15	159

Enrollment by Gender

This graph presents the count of students by gender who were 'on roll' in October of each school year.

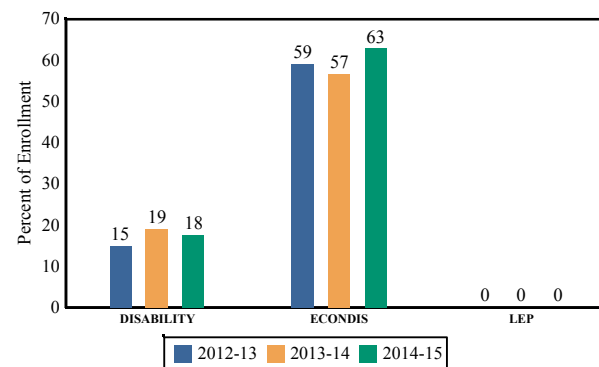


	Male	Female
2012-13	80	81
2013-14	70	66
2014-15	80	79

GRADE SPAN PK-06

Enrollment Trends by Program Participation

This graph presents the percentages of students by program participation who were 'on roll' in October of each school year.

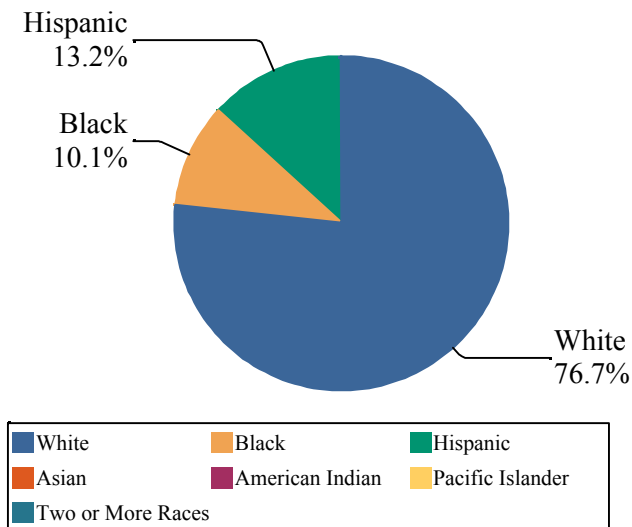


Current Year Enrollment by Program Participation		
2014-15	Count of Students	% of Enrollment
Students with Disability	28	18%
Economically Disadvantaged Students	100	62.9%
English Language Learners	0	0.0%

29-3800-050
OCEAN GATE ELEMENTARY SCHOOL
126 WEST ARVERNE AVENUE
OCEAN GATE, NJ 08740-0478

Enrollment by Ethnic/Racial Subgroup

This graph presents the percentages of enrollment for each subgroup defined by the No Child Left Behind Act of 2001.



Language Diversity	
This table presents the percentage of students who primarily speak each language in their home.	
2014-15	Percent
English	99.3%
Spanish	0.7%

ACADEMIC ACHIEVEMENT

OCEAN
OCEAN GATE BORO

GRADE SPAN PK-06

OCEAN GATE ELEMENTARY SCHOOL
126 WEST ARVERNE AVENUE
OCEAN GATE, NJ 08740-0478

The Academic Achievement section measures the content knowledge that students have in English Language Arts/Literacy (ELA/L) and Math as demonstrated in the 2014-2015 *Partnership for Assessment of Readiness for College and Careers* (PARCC) assessments. The below chart consist of three columns. The first column - Schoolwide Performance - includes the percentage of students in ELA/L and Math who met or exceeded grade level expectations. The middle column - Peer School Percentile - indicates how the school's outcomes compared to its peers. The last column - Statewide Percentile - indicates how the school's outcomes compared to schools across the state.

Academic Achievement Indicators	Schoolwide Performance	Peer Percentile	State Percentile
English Language Arts/Literacy Met or Exceeded Expectation	45%	71	34
Math Met or Exceeded Expectation	25%		

ESEA Waiver - English Language Arts/Literacy

This table presents, for each subgroup in the school, the total number of valid test scores, the percentage of students who met or exceeded expectations, the assessment participation goal, and the participation rate. The participation goal is established as 95% by the United States Department of Education.

Subgroups	Valid Scores	% Meeting Standards	Participation Goal	Participation Rate	Met Participation?
Schoolwide	72	44.5%	95%	98.7%	YES
White	57	49.1%	95%	100%	YES
African American	-	-	--	--	--
Hispanic	-	-	--	--	--
American Indian	-	-	--	--	--
Asian	-	-	--	--	--
Two or More Races	-	-	--	--	--
Students with Disability	-	-	--	--	--
English Language Learners	-	-	--	--	--
Economically Disadvantaged Students	40	30%	95%	97.9%	YES

YES* = Met Participation Rate (Participation Averaging applied)

Data is presented for subgroups when the count is high enough under ESEA Waiver suppression rules.

ACADEMIC ACHIEVEMENT

OCEAN
OCEAN GATE BORO

GRADE SPAN PK-06

OCEAN GATE ELEMENTARY SCHOOL
126 WEST ARVERNE AVENUE
OCEAN GATE, NJ 08740-0478

ESEA Waiver - Math

This table presents, for each subgroup in the school, the total number of valid test scores, the percentage of students who met or exceeded expectations, the assessment participation goal, and the participation rate. The participation goal is established as 95% by the United States Department of Education.

Subgroups	Valid Scores	% Meeting Standards	Participation Goal	Participation Rate	Met Participation?
Schoolwide	72	25%	95%	97.5%	YES
White	57	28.1%	95%	100%	YES
African American	-	-	--	--	--
Hispanic	-	-	--	--	--
American Indian	-	-	--	--	--
Asian	-	-	--	--	--
Two or More Races	-	-	--	--	--
Students with Disability	-	-	--	--	--
English Learner Students	-	-	--	--	--
Economically Disadvantaged Students	40	15%	95%	95.8%	YES

YES* = Met Participation Rate (Participation Averaging applied)

Data is presented for subgroups when the count is high enough under ESEA Waiver suppression rules.



State of New Jersey
2014-15

29-3800-050

ACADEMIC ACHIEVEMENT

OCEAN
OCEAN GATE BORO

GRADE SPAN PK-06

OCEAN GATE ELEMENTARY SCHOOL
126 WEST ARVERNE AVENUE
OCEAN GATE, NJ 08740-0478

PARCC Performance Level

The PARCC assesses how well students have learned grade-level material in English Language Arts/Literacy (ELA/L) and Math. The tests include questions that measure students' fundamental skills and knowledge, and require them to think critically, solve problems and support or explain their answers.

The PARCC reports students' overall scale scores that range from 650 to 850. To determine whether students have met academic expectations for their grade level/course in ELA/L and Math, students' overall scale scores are categorized into five Performance Levels. Students performing at levels 4 and 5 (met or exceeded expectations) have demonstrated readiness for the next grade level/course, and are on track for college and careers.

Five Performance Levels				
Level 1: Did Not Yet Meet Expectations (Min. 650)	Level 2: Partially Met Expectations	Level 3: Approached Expectations	Level 4: Met Expectations	Level 5: Exceeded Expectations (Max. 850)

ACADEMIC ACHIEVEMENT

OCEAN
OCEAN GATE BORO

GRADE SPAN PK-06

OCEAN GATE ELEMENTARY SCHOOL
126 WEST ARVERNE AVENUE
OCEAN GATE, NJ 08740-0478

PARCC ELA Performance Distribution - Grade - 03

This table presents the grade level outcomes, as measured by PARCC, in all five performance levels for all subgroups. PARCC consists of five performance levels: Level 1 - Did not yet meet grade-level expectations, Level 2 -Partially met expectations, Level 3 - Approached expectations, Level 4 - Met expectations, and Level 5 - Exceeded expectations.

Subgroup	Valid Scores	Mean Scale Score	State Mean Scale Score	% Level_1	% Level_2	% Level_3	% Level_4	% Level_5	% Met/ Exceeded Expectation	State % Met/Exceeded Expectation
Schoolwide	16	751	744	6%	19%	31%	38%	6%	44%	44%
White	13	752	753	0%	23%	38%	31%	8%	38%	55%
African American	-	-	725	-	-	-	-	-	-	26%
Hispanic	-	-	727	-	-	-	-	-	-	26%
American Indian	-	-	738	-	-	-	-	-	-	40%
Asian	-	-	769	-	-	-	-	-	-	70%
Two or More Races	-	-	751	-	-	-	-	-	-	53%
Students with Disability	-	-	718	-	-	-	-	-	-	24%
English Language Learners	-	-	709	-	-	-	-	-	-	11%
Economically Disadvantaged Students	-	-	724	-	-	-	-	-	-	24%

ACADEMIC ACHIEVEMENT

OCEAN
OCEAN GATE BORO

GRADE SPAN PK-06

OCEAN GATE ELEMENTARY SCHOOL
126 WEST ARVERNE AVENUE
OCEAN GATE, NJ 08740-0478

PARCC ELA Performance Distribution - Grade - 04

This table presents the grade level outcomes, as measured by PARCC, in all five performance levels for all subgroups. PARCC consists of five performance levels: Level 1 - Did not yet meet grade-level expectations, Level 2 -Partially met expectations, Level 3 - Approached expectations, Level 4 - Met expectations, and Level 5 - Exceeded expectations.

Subgroup	Valid Scores	Mean Scale Score	State Mean Scale Score	% Level_1	% Level_2	% Level_3	% Level_4	% Level_5	% Met/ Exceeded Expectation	State % Met/Exceeded Expectation
Schoolwide	16	735	751	6%	25%	38%	31%	0%	31%	52%
White	13	740	758	8%	15%	38%	38%	0%	38%	63%
African American	-	-	733	-	-	-	-	-	-	30%
Hispanic	-	-	737	-	-	-	-	-	-	35%
American Indian	-	-	746	-	-	-	-	-	-	52%
Asian	-	-	773	-	-	-	-	-	-	78%
Two or More Races	-	-	760	-	-	-	-	-	-	62%
Students with Disability	-	-	725	-	-	-	-	-	-	25%
English Language Learners	-	-	717	-	-	-	-	-	-	15%
Economically Disadvantaged Students	-	-	734	-	-	-	-	-	-	31%

ACADEMIC ACHIEVEMENT

OCEAN
OCEAN GATE BORO

GRADE SPAN PK-06

OCEAN GATE ELEMENTARY SCHOOL
126 WEST ARVERNE AVENUE
OCEAN GATE, NJ 08740-0478

PARCC ELA Performance Distribution - Grade - 05

This table presents the grade level outcomes, as measured by PARCC, in all five performance levels for all subgroups. PARCC consists of five performance levels: Level 1 - Did not yet meet grade-level expectations, Level 2 -Partially met expectations, Level 3 - Approached expectations, Level 4 - Met expectations, and Level 5 - Exceeded expectations.

Subgroup	Valid Scores	Mean Scale Score	State Mean Scale Score	% Level_1	% Level_2	% Level_3	% Level_4	% Level_5	% Met/ Exceeded Expectation	State % Met/Exceeded Expectation
Schoolwide	15	742	751	20%	7%	20%	47%	7%	53%	53%
White	13	746	757	15%	8%	15%	54%	8%	62%	62%
African American	-	-	734	-	-	-	-	-	-	31%
Hispanic	-	-	737	-	-	-	-	-	-	35%
American Indian	-	-	746	-	-	-	-	-	-	45%
Asian	-	-	771	-	-	-	-	-	-	77%
Two or More Races	-	-	758	-	-	-	-	-	-	61%
Students with Disability	-	-	723	-	-	-	-	-	-	21%
English Language Learners	-	-	717	-	-	-	-	-	-	15%
Economically Disadvantaged Students	-	-	734	-	-	-	-	-	-	31%

ACADEMIC ACHIEVEMENT

OCEAN
OCEAN GATE BORO

GRADE SPAN PK-06

OCEAN GATE ELEMENTARY SCHOOL
126 WEST ARVERNE AVENUE
OCEAN GATE, NJ 08740-0478

PARCC ELA Performance Distribution - Grade - 06

This table presents the grade level outcomes, as measured by PARCC, in all five performance levels for all subgroups. PARCC consists of five performance levels: Level 1 - Did not yet meet grade-level expectations, Level 2 -Partially met expectations, Level 3 - Approached expectations, Level 4 - Met expectations, and Level 5 - Exceeded expectations.

Subgroup	Valid Scores	Mean Scale Score	State Mean Scale Score	% Level_1	% Level_2	% Level_3	% Level_4	% Level_5	% Met/ Exceeded Expectation	State % Met/Exceeded Expectation
Schoolwide	25	746	749	0%	24%	28%	48%	0%	48%	50%
White	18	752	755	0%	11%	33%	56%	0%	56%	59%
African American	-	-	732	-	-	-	-	-	-	29%
Hispanic	-	-	736	-	-	-	-	-	-	34%
American Indian	-	-	743	-	-	-	-	-	-	39%
Asian	-	-	770	-	-	-	-	-	-	77%
Two or More Races	-	-	753	-	-	-	-	-	-	57%
Students with Disability	-	-	718	-	-	-	-	-	-	17%
English Language Learners	-	-	711	-	-	-	-	-	-	11%
Economically Disadvantaged Students	12	739	733	0%	33%	33%	33%	0%	33%	30%

ACADEMIC ACHIEVEMENT

OCEAN
OCEAN GATE BORO

GRADE SPAN PK-06

OCEAN GATE ELEMENTARY SCHOOL
126 WEST ARVERNE AVENUE
OCEAN GATE, NJ 08740-0478

PARCC MATH - Performance Distribution - Grade - 03

This table presents the grade level outcomes, as measured by PARCC, in all five performance levels for all subgroups. PARCC consists of five performance levels: Level 1 - Did not yet meet grade-level expectations, Level 2 - Partially met expectations, Level 3 - Approached expectations, Level 4 - Met expectations, and Level 5 - Exceeded expectations.

Subgroup	Valid Scores	Mean Scale Score	State Mean Scale Score	% Level_1	% Level_2	% Level_3	% Level_4	% Level_5	% Met/Exceeded Expectation	State % Met/Exceeded Expectation
Schoolwide	16	739	746	0%	19%	56%	25%	0%	25%	46%
White	13	738	752	0%	15%	62%	23%	0%	23%	56%
African American	-	-	728	-	-	-	-	-	-	25%
Hispanic	-	-	733	-	-	-	-	-	-	28%
American Indian	-	-	742	-	-	-	-	-	-	41%
Asian	-	-	772	-	-	-	-	-	-	77%
Two or More Races	-	-	751	-	-	-	-	-	-	54%
Students with Disability	-	-	727	-	-	-	-	-	-	27%
English Language Learners	-	-	724	-	-	-	-	-	-	17%
Economically Disadvantaged Students	-	-	730	-	-	-	-	-	-	26%

ACADEMIC ACHIEVEMENT

OCEAN
OCEAN GATE BORO

GRADE SPAN PK-06

OCEAN GATE ELEMENTARY SCHOOL
126 WEST ARVERNE AVENUE
OCEAN GATE, NJ 08740-0478

PARCC MATH - Performance Distribution - Grade - 04

This table presents the grade level outcomes, as measured by PARCC, in all five performance levels for all subgroups. PARCC consists of five performance levels: Level 1 - Did not yet meet grade-level expectations, Level 2 -Partially met expectations, Level 3 - Approached expectations, Level 4 - Met expectations, and Level 5 - Exceeded expectations.

Subgroup	Valid Scores	Mean Scale Score	State Mean Scale Score	% Level_1	% Level_2	% Level_3	% Level_4	% Level_5	% Met/Exceeded Expectation	State % Met/Exceeded Expectation
Schoolwide	16	729	744	0%	44%	44%	13%	0%	13%	42%
White	13	730	749	0%	38%	46%	15%	0%	15%	50%
African American	-	-	727	-	-	-	-	-	-	20%
Hispanic	-	-	732	-	-	-	-	-	-	26%
American Indian	-	-	740	-	-	-	-	-	-	40%
Asian	-	-	769	-	-	-	-	-	-	75%
Two or More Races	-	-	750	-	-	-	-	-	-	52%
Students with Disability	-	-	724	-	-	-	-	-	-	21%
English Language Learners	-	-	722	-	-	-	-	-	-	15%
Economically Disadvantaged Students	-	-	730	-	-	-	-	-	-	23%

ACADEMIC ACHIEVEMENT

OCEAN
OCEAN GATE BORO

GRADE SPAN PK-06

OCEAN GATE ELEMENTARY SCHOOL
126 WEST ARVERNE AVENUE
OCEAN GATE, NJ 08740-0478

PARCC MATH - Performance Distribution - Grade - 05

This table presents the grade level outcomes, as measured by PARCC, in all five performance levels for all subgroups. PARCC consists of five performance levels: Level 1 - Did not yet meet grade-level expectations, Level 2 -Partially met expectations, Level 3 - Approached expectations, Level 4 - Met expectations, and Level 5 - Exceeded expectations.

Subgroup	Valid Scores	Mean Scale Score	State Mean Scale Score	% Level_1	% Level_2	% Level_3	% Level_4	% Level_5	% Met/ Exceeded Expectation	State % Met/Exceeded Expectation
Schoolwide	15	741	744	20%	7%	27%	40%	7%	47%	42%
White	13	743	749	15%	8%	31%	38%	8%	46%	49%
African American	-	-	728	-	-	-	-	-	-	21%
Hispanic	-	-	733	-	-	-	-	-	-	26%
American Indian	-	-	745	-	-	-	-	-	-	46%
Asian	-	-	768	-	-	-	-	-	-	74%
Two or More Races	-	-	749	-	-	-	-	-	-	50%
Students with Disability	-	-	724	-	-	-	-	-	-	19%
English Language Learners	-	-	724	-	-	-	-	-	-	17%
Economically Disadvantaged Students	-	-	731	-	-	-	-	-	-	23%

ACADEMIC ACHIEVEMENT

OCEAN
OCEAN GATE BORO

GRADE SPAN PK-06

OCEAN GATE ELEMENTARY SCHOOL
126 WEST ARVERNE AVENUE
OCEAN GATE, NJ 08740-0478

PARCC MATH - Performance Distribution - Grade - 06

This table presents the grade level outcomes, as measured by PARCC, in all five performance levels for all subgroups. PARCC consists of five performance levels: Level 1 - Did not yet meet grade-level expectations, Level 2 -Partially met expectations, Level 3 - Approached expectations, Level 4 - Met expectations, and Level 5 - Exceeded expectations.

Subgroup	Valid Scores	Mean Scale Score	State Mean Scale Score	% Level_1	% Level_2	% Level_3	% Level_4	% Level_5	% Met/Exceeded Expectation	State % Met/Exceeded Expectation
Schoolwide	25	732	743	8%	28%	44%	20%	0%	20%	42%
White	18	735	749	11%	17%	44%	28%	0%	28%	50%
African American	-	-	726	-	-	-	-	-	-	19%
Hispanic	-	-	731	-	-	-	-	-	-	25%
American Indian	-	-	740	-	-	-	-	-	-	35%
Asian	-	-	768	-	-	-	-	-	-	75%
Two or More Races	-	-	745	-	-	-	-	-	-	44%
Students with Disability	-	-	718	-	-	-	-	-	-	15%
English Language Learners	-	-	718	-	-	-	-	-	-	14%
Economically Disadvantaged Students	-	-	729	-	-	-	-	-	-	23%

ACADEMIC ACHIEVEMENT

OCEAN
OCEAN GATE BORO

GRADE SPAN PK-06

OCEAN GATE ELEMENTARY SCHOOL
126 WEST ARVERNE AVENUE
OCEAN GATE, NJ 08740-0478

2015 National Assessment Educational Progress (NAEP)

The National Assessment of Educational Progress (NAEP) is the largest national assessment of what our nation's students know and can do. NAEP assesses fourth-, eighth-, and twelfth-grade students in subjects such as reading, mathematics, science, and writing. The reporting of NAEP scores on state report cards is a federal mandate. The results of NAEP are also published as the Nation's Report Card, and are available for the nation, states, and, in some cases, urban districts. The NAEP scores on the report card include grades four and eight 2015 reading and math scores for New Jersey which are the last scores published.

For subgroup outcomes, visit:

Reading Grade 4 <http://www.nj.gov/education/pr/1415/naep/naep4read.html>
Reading Grade 8 <http://www.nj.gov/education/pr/1415/naep/naep8read.html>
Math Grade 4 <http://www.nj.gov/education/pr/1415/naep/naep4math.html>
Math Grade 8 <http://www.nj.gov/education/pr/1415/naep/naep8math.html>

For more information, visit <http://nces.ed.gov/nationsreportcard/>

Proficiency Percentages

Subject	Grade	State/Nation	Below Basic	Basic	Proficient	Advanced
Reading	Grade 4	State (NJ)	25	33	31	12
	Grade 4	Nation	31	33	27	9
	Grade 8	State (NJ)	20	39	35	6
	Grade 8	Nation	24	42	31	4
Math	Grade 4	State (NJ)	14	39	38	9
	Grade 4	Nation	18	42	33	7
	Grade 8	State (NJ)	21	32	30	16
	Grade 8	Nation	29	38	25	8

ACADEMIC ACHIEVEMENT

OCEAN
OCEAN GATE BORO

GRADE SPAN PK-06

29-3800-050
OCEAN GATE ELEMENTARY SCHOOL
126 WEST ARVERNE AVENUE
OCEAN GATE, NJ 08740-0478

NJASK Results - Science Grade Level - 04

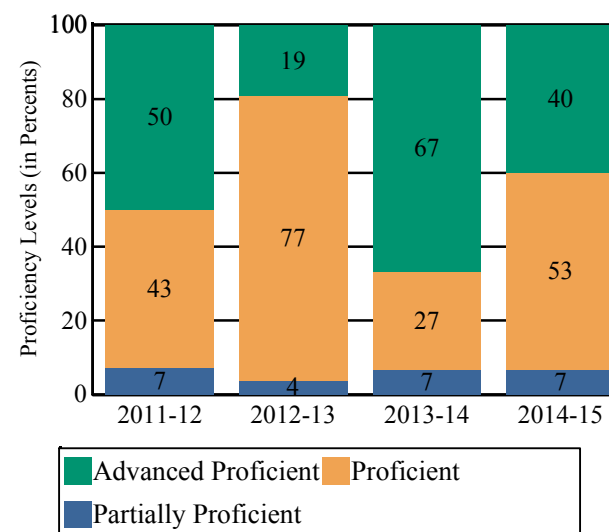
This table presents the grade level proficiency results, as measured by NJASK, in Advanced Proficient, Proficient, and Partially Proficient categories for all appropriate subgroups.

Subgroups	Advanced Proficient	Proficient	Partially Proficient
Schoolwide	40%	53%	7%
White	42%	50%	8%
African American	-	-	-
Hispanic	-	-	-
American Indian	-	-	-
Asian	-	-	-
Two or More Races	-	-	-
Students with Disability	-	-	-
English Language Learners	-	-	-
Economically Disadvantaged Students	-	-	-

Data is presented for subgroups when the count is high enough under ESEA Waiver suppression rules.

NJASK Proficiency Trends - Science - Grade Level - 04

This graph presents the grade level outcomes in the categories of Advanced Proficient, Proficient, and Partially Proficient over the last four years.



COLLEGE AND CAREER READINESS

OCEAN
OCEAN GATE BORO

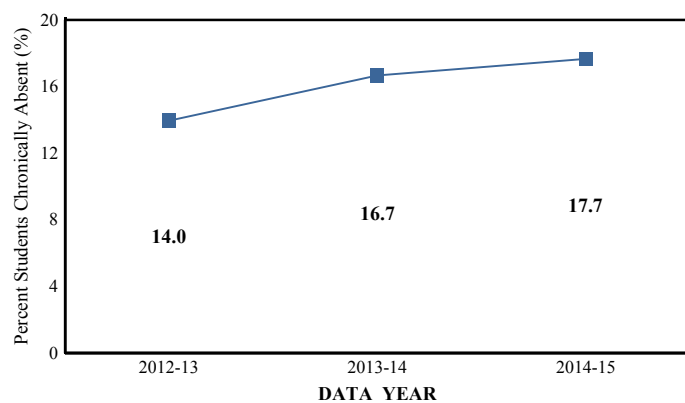
GRADE SPAN PK-06

OCEAN GATE ELEMENTARY SCHOOL
126 WEST ARVERNE AVENUE
OCEAN GATE, NJ 08740-0478

Students in both elementary and middle schools begin to demonstrate college readiness behaviors long before they even enter high school. Among the behaviors that research has shown to be indicative of successfully graduating high school is regularly attending school. For all elementary schools, this includes the percentage of students that are chronically absent each year, defined as missing more than 10% of possible school days.

Chronic Absenteeism Trend

This graph presents the percentage of the enrolled students who were chronically absent for the past three years.

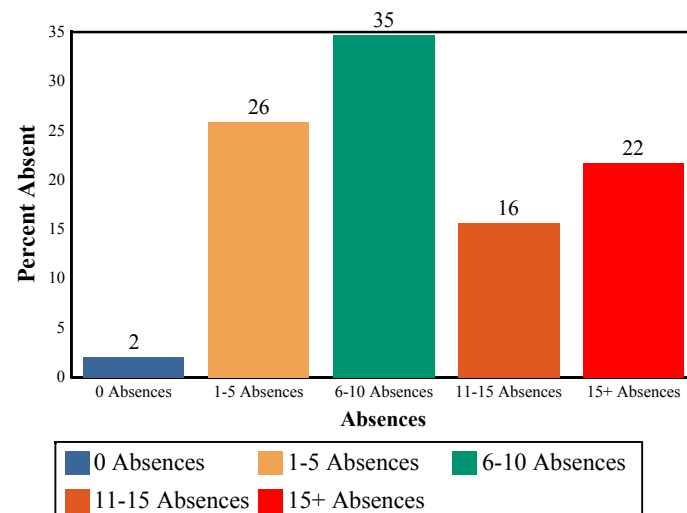


Chronic Absenteeism for 2014-15

17.69%

Absenteeism

The chart below presents the percentage of students who were absent in each category of absence: 0 absences, 1- 5 absences, 6 - 10 absences, 11 - 15 absences, and more than 15 absences. An absence is defined as being 'not present' and includes the days missed regardless of whether they were determined to be excused or unexcused by the school.



STUDENT GROWTH

OCEAN

OCEAN GATE BORO

GRADE SPAN PK-06

OCEAN GATE ELEMENTARY SCHOOL

126 WEST ARVERNE AVENUE

OCEAN GATE, NJ 08740-0478

This section of the performance report presents data about student growth, utilizing the Student Growth Percentile Methodology (SGP). SGP creates a measure of how students progressed in grades 4 through 8 in Language Arts Literacy and in grades 4 through 7 in Math when compared to other students with a similar test score history. A short video explaining the methodology can be found here: <http://www.state.nj.us/education/njsmart/performance/>

The below chart consist of five columns with measures. The first column - Schoolwide Performance - presents the schoolwide median growth score in either English Language Arts/Literacy or Mathematics for all students in the school. The second column - Peer Percentile - indicates how the school's growth performance compares to its group of peer schools. The third column - Statewide Percentile - indicates how a school compares to schools across the state. The last column - Met Target? - indicates whether the school's performance met or exceeded the statewide target, which was set to 35.

The fourth row presents the averages of the peer school percentiles, the averages of statewide percentiles, the percentage of statewide targets met.

Student Growth Indicators	Schoolwide Performance	Peer Percentile	Statewide Percentile	Statewide Target	Met Target?
Student Growth on Language Arts	40	21	13	35	YES
Student Growth on Math	34	18	9	35	NO
		20	11		50%

Student Growth

This table presents for all students with growth scores the interaction between their performance on PARCC and their growth scores. For example, in the top left cell the percentage of students who are both in Level 1 - Did not yet meet expectations AND also demonstrating low growth is displayed.

Language Arts

(Expectations)	GROWTH		
	Low	Typical	High
Did Not Yet Meet	7%	3%	0%
Partially Met	13%	0%	3%
Approached	17%	5%	8%
Met	10%	20%	12%
Exceeded	0%	0%	2%

Math

(Expectations)	GROWTH		
	Low	Typical	High
Did Not Yet Meet	7%	5%	0%
Partially Met	20%	3%	2%
Approached	20%	13%	5%
Met	5%	13%	5%
Exceeded	0%	2%	0%

Low Growth is defined as an **Student Growth Percentile** score less than 35.

Typical Growth is defined as an **Student Growth Percentile** score between 35 and 65.

High Growth is defined as a **Student Growth Percentile** score higher than 65.

WITHIN SCHOOL ACHIEVEMENT GAP

OCEAN

OCEAN GATE BORO

GRADE SPAN PK-06

OCEAN GATE ELEMENTARY SCHOOL

126 WEST ARVERNE AVENUE

OCEAN GATE, NJ 08740-0478

This section of the performance report presents data about the achievement gap that exists within a school - as measured by the difference between the students' scale scores at the 25th and 75th percentile in the school, the Interquartile Range (IQR). Taken together with an understanding of the overall and average achievement levels in the school, the IQR furthers an understanding of the range of student outcomes that exist in a school. A school gap smaller than the state gap indicates that the school's range of student outcomes is narrower than the state's while a school gap larger than the state gap indicates that the school's range of student outcomes is broader than the state's.

Grade Level - 03

PARCC Language Arts 25th %ile vs 75th%ile

This table presents the scale scores associated with students at the bottom (0th percentile), the 25th percentile, the 50th percentile, the 75th percentile and the top (99th percentile) of school's distribution.

Percentile	School Scale Score	State Scale Score
99th	823	850
75th	782	770
50th	749	743
25th	734	715
0th	698	650

	Scale Score Gap - School	Scale Score Gap - State
25th vs 75th Gap	48	55

Grade Level - 03

PARCC MATH 25th %ile vs 75th%ile

This table presents the scale scores associated with students at the bottom (0th percentile), the 25th percentile, the 50th percentile, the 75th percentile and the top (99th percentile) of school's distribution.

Percentile	School Scale Score	State Scale Score
99th	768	850
75th	751	767
50th	739	745
25th	729	722
0th	717	650

	Scale Score Gap - School	Scale Score Gap - State
25th vs 75th Gap	22	45

WITHIN SCHOOL ACHIEVEMENT GAP

OCEAN
OCEAN GATE BORO

GRADE SPAN PK-06

OCEAN GATE ELEMENTARY SCHOOL
126 WEST ARVERNE AVENUE
OCEAN GATE, NJ 08740-0478

Grade Level - 04

PARCC Language Arts 25th %ile vs 75th%ile

This table presents the scale scores associated with students at the bottom (0th percentile), the 25th percentile, the 50th percentile, the 75th percentile and the top (99th percentile) of school's distribution.

Percentile	School Scale Score	State Scale Score
99th	776	850
75th	753	773
50th	736	750
25th	717	728
0th	693	650

	Scale Score Gap - School	Scale Score Gap - State
25th vs 75th Gap	36	45

Grade Level - 05

PARCC Language Arts 25th %ile vs 75th%ile

This table presents the scale scores associated with students at the bottom (0th percentile), the 25th percentile, the 50th percentile, the 75th percentile and the top (99th percentile) of school's distribution.

Percentile	School Scale Score	State Scale Score
99th	795	850
75th	757	773
50th	748	751
25th	712	728
0th	673	650

	Scale Score Gap - School	Scale Score Gap - State
25th vs 75th Gap	45	45

Grade Level - 04

PARCC MATH 25th %ile vs 75th%ile

This table presents the scale scores associated with students at the bottom (0th percentile), the 25th percentile, the 50th percentile, the 75th percentile and the top (99th percentile) of school's distribution.

Percentile	School Scale Score	State Scale Score
99th	757	850
75th	737	764
50th	731	742
25th	719	721
0th	711	650

	Scale Score Gap - School	Scale Score Gap - State
25th vs 75th Gap	18	43

Grade Level - 05

PARCC MATH 25th %ile vs 75th%ile

This table presents the scale scores associated with students at the bottom (0th percentile), the 25th percentile, the 50th percentile, the 75th percentile and the top (99th percentile) of school's distribution.

Percentile	School Scale Score	State Scale Score
99th	790	850
75th	755	763
50th	747	743
25th	715	723
0th	693	650

	Scale Score Gap - School	Scale Score Gap - State
25th vs 75th Gap	40	40

WITHIN SCHOOL ACHIEVEMENT GAP

OCEAN

OCEAN GATE BORO

GRADE SPAN PK-06

OCEAN GATE ELEMENTARY SCHOOL

126 WEST ARVERNE AVENUE

OCEAN GATE, NJ 08740-0478

Grade Level - 06

PARCC Language Arts 25th %ile vs 75th%ile

This table presents the scale scores associated with students at the bottom (0th percentile), the 25th percentile, the 50th percentile, the 75th percentile and the top (99th percentile) of school's distribution.

Percentile	School Scale Score	State Scale Score
99th	787	850
75th	762	770
50th	749	749
25th	725	726
0th	684	650

	Scale Score Gap - School	Scale Score Gap - State
25th vs 75th Gap	37	44

Grade Level - 06

PARCC MATH 25th %ile vs 75th%ile

This table presents the scale scores associated with students at the bottom (0th percentile), the 25th percentile, the 50th percentile, the 75th percentile and the top (99th percentile) of school's distribution.

Percentile	School Scale Score	State Scale Score
99th	766	850
75th	745	763
50th	730	742
25th	718	721
0th	691	650

	Scale Score Gap - School	Scale Score Gap - State
25th vs 75th Gap	27	42

SCHOOL CLIMATE

OCEAN
OCEAN GATE BORO

State of New Jersey

2014-15

GRADE SPAN PK-06

29-3800-050

OCEAN GATE ELEMENTARY SCHOOL
126 WEST ARVERNE AVENUE
OCEAN GATE, NJ 08740-0478

Length of School Day

This table presents the amount of time a school is in session for a typical student on a normal school day.

	School
2014-15	6 Hrs. 35 Mins.

Student Suspension Rate

This table presents the percentage of students who were suspended one or more times during the school year.

	School
2014-15	1.9%

Instructional Time

This table presents the amount of time that a typical student is engaged in instructional activities under the supervision of a certified teacher.

2014-15	School
Full Time	5 Hrs. 45 Mins.
Shared Time	0 Hrs. 0 Mins.

Student Expulsions

This table presents the number of students who were expelled from the school and district during the school year.

	School
2014-15	0

Student to Staff Ratio

This table presents the count of students per faculty member or administrator in the school. All staff are counted in full-time equivalents.

2014-15	School
Faculty	10
Administrators	80

SCHOOL PEER GROUP

OCEAN
OCEAN GATE BORO

GRADE SPAN PK-06

OCEAN GATE ELEMENTARY SCHOOL
126 WEST ARVERNE AVENUE
OCEAN GATE, NJ 08740-0478

This table presents the list of peer schools in alphabetical order by county name that was created specifically for this school (highlighted in yellow). Peer schools are drawn from across the state and represent schools that have similar grade configurations and that are educating students of similar demographic characteristics, as measured by enrollment in Free/Reduced Lunch Programs, Limited English Proficiency or Special Education Programs.

<u>COUNTY NAME</u>	<u>DISTRICT NAME</u>	<u>SCHOOL NAME</u>	<u>CDS CODE</u>	<u>GRADES</u> <u>SPAN</u>	<u>ECONOMICALLY</u> <u>DISADVANTAGED</u>	<u>ENGLISH</u> <u>LANGUAGE</u> <u>LEARNERS</u>	<u>SPECIAL</u> <u>EDUCATION</u>
ATLANTIC	BUENA REGIONAL	COLLINGS LAKES ELEMENTARY SCHOOL	01-0590-045	KG-03	66.3%	4.6%	13.7%
ATLANTIC	SOMERS POINT CITY	DAWES AVENUE ELEMENTARY SCHOOL	01-4800-050	PK-06	69%	0.2%	17.8%
ATLANTIC	VENTNOR CITY	VENTNOR ELEMENTARY SCHOOL	01-5350-045	PK-04	67.8%	7.7%	11.7%
BERGEN	HACKENSACK CITY	FAIRMOUNT	03-1860-100	PK-04	66.1%	5.8%	10.5%
BERGEN	LODI BOROUGH	COLUMBUS SCHOOL	03-2740-060	KG-05	59.8%	5.8%	6.5%
BERGEN	LODI BOROUGH	WILSON SCHOOL	03-2740-100	PK-05	63.7%	5.5%	8.4%
BURLINGTON	WILLINGBORO TWP	HAWTHORNE PARK ELEMMENTARY SCHOOL	05-5805-065	PK-05	58%	0%	11.7%
BURLINGTON	WILLINGBORO TWP	J. C. STUART ELEMENTARY SCHOOL	05-5805-090	PK-05	58.7%	0.2%	13%
BURLINGTON	WILLINGBORO TWP	W. R. JAMES SR. ELEMENTARY SCHOOL	05-5805-080	PK-05	60.3%	3.9%	6.6%
CAMDEN	BELLMAWR BORO	BELLMAWR PARK ELEMENTARY SCHOOL	07-0260-020	PK-04	60.6%	5.5%	5.1%
CAMDEN	PENNSAUKEN TWP	BENJAMIN FRANKLIN ELEMENTARY SCHOOL	07-4060-100	KG-04	65.7%	1.8%	17.6%
CAMDEN	PENNSAUKEN TWP	ROOSEVELT ELEMENTARY SCHOOL	07-4060-180	KG-04	56.8%	2.4%	3%
CAMDEN	PINE HILL BORO	DR. ALBERT M. BEAN SCHOOL	07-4110-060	PK-05	65.5%	1.5%	17.1%
CAMDEN	WINSLOW TWP	WINSLOW TOWNSHIP ELEMENTARY SCHOOL THREE	07-5820-050	PK-03	56.1%	0%	10.8%
CHARTERS	MILLVILLE PUBLIC CHARTER SCHOOL	MILLVILLE PUBLIC CHARTER SCHOOL	80-6069-952	KG-05	60.6%	0%	9.3%
CHARTERS	VINELAND PUBLIC CHARTER SCHOOL	VINELAND PUBLIC CHARTER SCHOOL	80-6028-910	KG-07	50%	0%	7.3%
ESSEX	BELLEVILLE TOWN	BELLEVILLE PS10	13-0250-100	KG-05	52.2%	2.2%	3.8%
HUDSON	HOBOKEN CITY	SALVATORE R. CALABRO	17-2210-063	KG-06	57%	0%	5%
HUDSON	KEARNY TOWN	FRANKLIN ELEMENTARY SCHOOL	17-2410-070	PK-06	63.5%	8.3%	8.3%
HUDSON	KEARNY TOWN	GARFIELD ELEMENTARY SCHOOL	17-2410-080	PK-06	63.2%	1.6%	14.3%
MERCER	HAMILTON TWP	KLOCKNER ELEMENTARY SCHOOL	21-1950-160	PK-05	59.5%	2.3%	13.6%

SCHOOL PEER GROUP

OCEAN
OCEAN GATE BORO

GRADE SPAN PK-06

OCEAN GATE ELEMENTARY SCHOOL
126 WEST ARVERNE AVENUE
OCEAN GATE, NJ 08740-0478

MERCER	HAMILTON TWP	KUSER ELEMENTARY SCHOOL	21-1950-170	PK-05	67.6%	8%	6.3%
MIDDLESEX	CARTERET BORO	COLUMBUS ELEMENTARY SCHOOL	23-0750-050	PK-05	68.9%	9.3%	10.3%
MIDDLESEX	WOODBRIIDGE TWP	ROSS STREET ELEMENTARY SCHOOL	23-5850-280	KG-05	51.9%	0.2%	8.9%
MONMOUTH	NEPTUNE TWP	GABLES ELEMENTARY SCHOOL	25-3510-061	PK-05	64.8%	0%	13.2%
OCEAN	OCEAN GATE BORO	OCEAN GATE ELEMENTARY SCHOOL	29-3800-050	PK-06	62.9%	0%	16.6%
OCEAN	TOMS RIVER REGIONAL	SOUTH TOMS RIVER ELEMENTARY SCHOOL	29-5190-100	KG-05	65.7%	0.3%	14.6%
PASSAIC	CLIFTON CITY	SCHOOL #1	31-0900-080	KG-05	60.7%	2.4%	7.7%
PASSAIC	CLIFTON CITY	SCHOOL #3	31-0900-100	KG-05	58.2%	1.7%	8.6%
SOMERSET	NORTH PLAINFIELD BORO	EAST END SCHOOL	35-3670-060	PK-04	67.4%	8.5%	9.5%
UNION	LINDEN CITY	NUMBER 5	39-2660-120	PK-05	65.6%	2.7%	9.6%