



OVERVIEW

GLOUCESTER

SOUTH HARRISON TWP

SOUTH HARRISON TOWNSHIP ELEMENTARY SCHOOL

904 MULLICA HILL RD

HARRISONVILLE, NJ 08039-0112

GRADE SPAN KG-06

The New Jersey Department of Education (NJDOE) is pleased to present these annual reports of School Performance. These reports are designed to inform parents, educators and communities about how well a school is performing and preparing its students for college and careers.

In particular, the School Performance Reports seek to:

- **Focus** attention on metrics that are indicative of college and career readiness.
- **Benchmark** a school's performance against other peer schools that are educating similar students, against statewide outcomes, and against state targets to illuminate and build upon a school's strengths and identify areas for improvement.
- **Improve** educational outcomes for students by providing both longitudinal and growth data so that progress can be measured as part of an individual school's efforts to engage in continuous improvement.

While the New Jersey School Performance Reports seek to bring more information to educators and stakeholders about the performance of schools, they do not seek to distill the performance of schools into a single metric, a single score, or a simplified conclusion. Instead, the intention is that educators and stakeholders will engage in deep, lengthy conversations about the full range of the data presented. As educators know well, measuring school performance is both an art and a science. While the School Performance Report brings attention to important student outcomes, NJDOE does not collect data about other essential elements of a school, such as the provision of opportunities to participate and excel in extracurricular activities; the development of non-cognitive skills like time management and perseverance; the pervasiveness of a positive school culture or climate; or the attainment of other employability and technical skills, as many of these data are beyond both the capacity and resources of schools to measure and collect well.

To learn more about New Jersey's school accountability system, please visit: <http://www.nj.gov/education/educators/>.

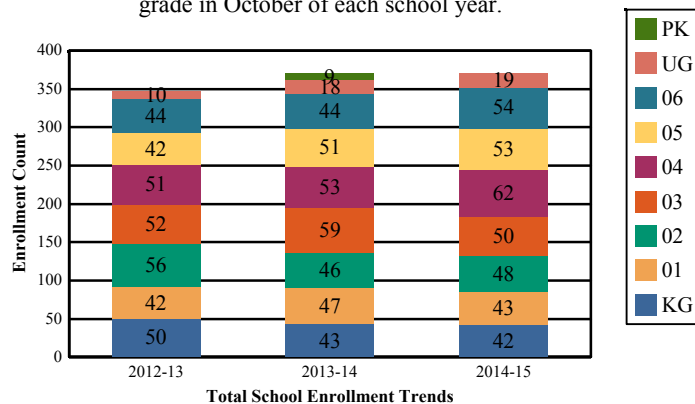
DEMOGRAPHIC INFORMATION

GLOUCESTER

SOUTH HARRISON TWP

Enrollment by Grade

This graph presents the count of students who were 'on roll' by grade in October of each school year.

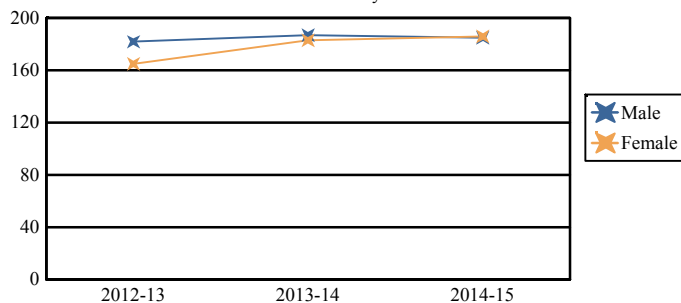


Note: "UG" represents the count of students who are 'on roll' in this school but who are educated in ungraded classrooms, meaning that the classrooms may contain students from multiple grade levels.

Total School Enrollment	
2012-13	347
2013-14	370
2014-15	371

Enrollment by Gender

This graph presents the count of students by gender who were 'on roll' in October of each school year.

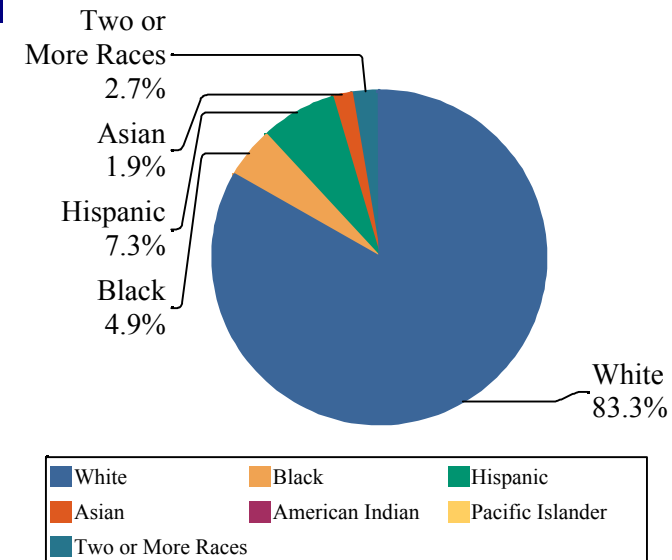


	Male	Female
2012-13	182	165
2013-14	187	183
2014-15	185	186

15-4880-050
SOUTH HARRISON TOWNSHIP ELEMENTARY SCHOOL
904 MULICA HILL RD
HARRISONVILLE, NJ 08039-0112

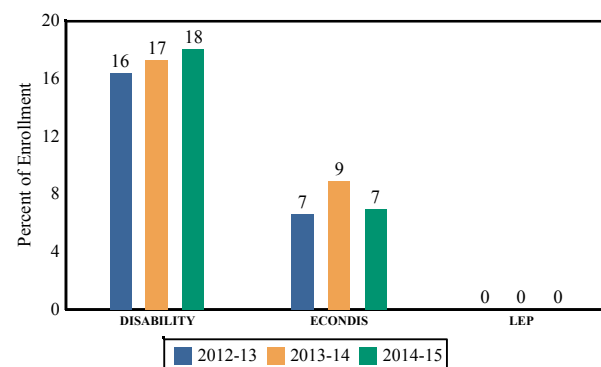
Enrollment by Ethnic/Racial Subgroup

This graph presents the percentages of enrollment for each subgroup defined by the No Child Left Behind Act of 2001.



Enrollment Trends by Program Participation

This graph presents the percentages of students by program participation who were 'on roll' in October of each school year.



Current Year Enrollment by Program Participation		
2014-15	Count of Students	% of Enrollment
Students with Disability	67	18%
Economically Disadvantaged Students	26	7.0%
English Language Learners	0	0.0%

Language Diversity

This table presents the percentage of students who primarily speak each language in their home.

2014-15	Percent
English	95.9%
Spanish	3.6%
Italian	0.5%

ACADEMIC ACHIEVEMENT

GLOUCESTER

SOUTH HARRISON TWP

SOUTH HARRISON TOWNSHIP ELEMENTARY SCHOOL

904 MULICA HILL RD

HARRISONVILLE, NJ 08039-0112

GRADE SPAN KG-06

The Academic Achievement section measures the content knowledge that students have in English Language Arts/Literacy (ELA/L) and Math as demonstrated in the 2014-2015 *Partnership for Assessment of Readiness for College and Careers* (PARCC) assessments. The below chart consist of three columns. The first column - Schoolwide Performance - includes the percentage of students in ELA/L and Math who met or exceeded grade level expectations. The middle column - Peer School Percentile - indicates how the school's outcomes compared to its peers. The last column - Statewide Percentile - indicates how the school's outcomes compared to schools across the state.

Academic Achievement Indicators	Schoolwide Performance	Peer Percentile	State Percentile
English Language Arts/Literacy Met or Exceeded Expectation	60%	26	63
Math Met or Exceeded Expectation	53%		

ESEA Waiver - English Language Arts/Literacy

This table presents, for each subgroup in the school, the total number of valid test scores, the percentage of students who met or exceeded expectations, the assessment participation goal, and the participation rate. The participation goal is established as 95% by the United States Department of Education.

Subgroups	Valid Scores	% Meeting Standards	Participation Goal	Participation Rate	Met Participation?
Schoolwide	192	59.9%	95%	86.6%	YES*
White	171	60.9%	95%	87.7%	YES*
African American	-	-	--	--	--
Hispanic	-	-	--	--	--
American Indian	-	-	--	--	--
Asian	-	-	--	--	--
Two or More Races	-	-	--	--	--
Students with Disability	49	32.6%	95%	87.7%	YES*
English Language Learners	-	-	--	--	--
Economically Disadvantaged Students	-	-	--	--	--

YES* = Met Participation Rate (Participation Averaging applied)

Data is presented for subgroups when the count is high enough under ESEA Waiver suppression rules.

ACADEMIC ACHIEVEMENT

GLOUCESTER

SOUTH HARRISON TWP

SOUTH HARRISON TOWNSHIP ELEMENTARY SCHOOL

904 MULICA HILL RD

HARRISONVILLE, NJ 08039-0112

GRADE SPAN KG-06

ESEA Waiver - Math

This table presents, for each subgroup in the school, the total number of valid test scores, the percentage of students who met or exceeded expectations, the assessment participation goal, and the participation rate. The participation goal is established as 95% by the United States Department of Education.

Subgroups	Valid Scores	% Meeting Standards	Participation Goal	Participation Rate	Met Participation?
Schoolwide	192	53.1%	95%	86.6%	YES*
White	170	54.2%	95%	87.2%	YES*
African American	-	-	--	--	--
Hispanic	-	-	--	--	--
American Indian	-	-	--	--	--
Asian	-	-	--	--	--
Two or More Races	-	-	--	--	--
Students with Disability	49	26.5%	95%	87.7%	YES*
English Learner Students	-	-	--	--	--
Economically Disadvantaged Students	-	-	--	--	--

YES* = Met Participation Rate (Participation Averaging applied)

Data is presented for subgroups when the count is high enough under ESEA Waiver suppression rules.

ACADEMIC ACHIEVEMENT

GLOUCESTER

SOUTH HARRISON TWP

SOUTH HARRISON TOWNSHIP ELEMENTARY SCHOOL

904 MULICA HILL RD

HARRISONVILLE, NJ 08039-0112

GRADE SPAN KG-06

PARCC Performance Level

The PARCC assesses how well students have learned grade-level material in English Language Arts/Literacy (ELA/L) and Math. The tests include questions that measure students' fundamental skills and knowledge, and require them to think critically, solve problems and support or explain their answers.

The PARCC reports students' overall scale scores that range from 650 to 850. To determine whether students have met academic expectations for their grade level/course in ELA/L and Math, students' overall scale scores are categorized into five Performance Levels. Students performing at levels 4 and 5 (met or exceeded expectations) have demonstrated readiness for the next grade level/course, and are on track for college and careers.

Five Performance Levels				
Level 1: Did Not Yet Meet Expectations <i>(Min. 650)</i>	Level 2: Partially Met Expectations	Level 3: Approached Expectations	Level 4: Met Expectations	Level 5: Exceeded Expectations <i>(Max. 850)</i>

ACADEMIC ACHIEVEMENT

GLOUCESTER

SOUTH HARRISON TWP

SOUTH HARRISON TOWNSHIP ELEMENTARY SCHOOL

904 MULLICA HILL RD

HARRISONVILLE, NJ 08039-0112

GRADE SPAN KG-06

PARCC ELA Performance Distribution - Grade - 03

This table presents the grade level outcomes, as measured by PARCC, in all five performance levels for all subgroups. PARCC consists of five performance levels: Level 1 - Did not yet meet grade-level expectations, Level 2 -Partially met expectations, Level 3 - Approached expectations, Level 4 - Met expectations, and Level 5 - Exceeded expectations.

Subgroup	Valid Scores	Mean Scale Score	State Mean Scale Score	% Level_1	% Level_2	% Level_3	% Level_4	% Level_5	% Met/ Exceeded Expectation	State % Met/Exceeded Expectation
Schoolwide	51	752	744	6%	14%	22%	59%	0%	59%	44%
White	50	752	753	6%	14%	22%	58%	0%	58%	55%
African American	-	-	725	-	-	-	-	-	-	26%
Hispanic	-	-	727	-	-	-	-	-	-	26%
American Indian	-	-	738	-	-	-	-	-	-	40%
Asian	-	-	769	-	-	-	-	-	-	70%
Two or More Races	-	-	751	-	-	-	-	-	-	53%
Students with Disability	16	727	718	19%	25%	25%	31%	0%	31%	24%
English Language Learners	-	-	709	-	-	-	-	-	-	11%
Economically Disadvantaged Students	-	-	724	-	-	-	-	-	-	24%

ACADEMIC ACHIEVEMENT

GLOUCESTER

SOUTH HARRISON TWP

SOUTH HARRISON TOWNSHIP ELEMENTARY SCHOOL

904 MULICA HILL RD

HARRISONVILLE, NJ 08039-0112

GRADE SPAN KG-06

PARCC ELA Performance Distribution - Grade - 04

This table presents the grade level outcomes, as measured by PARCC, in all five performance levels for all subgroups. PARCC consists of five performance levels: Level 1 - Did not yet meet grade-level expectations, Level 2 -Partially met expectations, Level 3 - Approached expectations, Level 4 - Met expectations, and Level 5 - Exceeded expectations.

Subgroup	Valid Scores	Mean Scale Score	State Mean Scale Score	% Level_1	% Level_2	% Level_3	% Level_4	% Level_5	% Met/Exceeded Expectation	State % Met/Exceeded Expectation
Schoolwide	51	753	751	2%	14%	27%	51%	6%	57%	52%
White	40	752	758	3%	15%	25%	53%	5%	58%	63%
African American	-	-	733	-	-	-	-	-	-	30%
Hispanic	-	-	737	-	-	-	-	-	-	35%
American Indian	-	-	746	-	-	-	-	-	-	52%
Asian	-	-	773	-	-	-	-	-	-	78%
Two or More Races	-	-	760	-	-	-	-	-	-	62%
Students with Disability	13	730	725	8%	54%	15%	15%	8%	23%	25%
English Language Learners	-	-	717	-	-	-	-	-	-	15%
Economically Disadvantaged Students	-	-	734	-	-	-	-	-	-	31%

ACADEMIC ACHIEVEMENT

GLOUCESTER

SOUTH HARRISON TWP

SOUTH HARRISON TOWNSHIP ELEMENTARY SCHOOL

904 MULLICA HILL RD

HARRISONVILLE, NJ 08039-0112

GRADE SPAN KG-06

PARCC ELA Performance Distribution - Grade - 05

This table presents the grade level outcomes, as measured by PARCC, in all five performance levels for all subgroups. PARCC consists of five performance levels: Level 1 - Did not yet meet grade-level expectations, Level 2 -Partially met expectations, Level 3 - Approached expectations, Level 4 - Met expectations, and Level 5 - Exceeded expectations.

Subgroup	Valid Scores	Mean Scale Score	State Mean Scale Score	% Level_1	% Level_2	% Level_3	% Level_4	% Level_5	% Met/Exceeded Expectation	State % Met/Exceeded Expectation
Schoolwide	50	757	751	8%	4%	22%	58%	8%	66%	53%
White	44	759	757	5%	5%	20%	64%	7%	70%	62%
African American	-	-	734	-	-	-	-	-	-	31%
Hispanic	-	-	737	-	-	-	-	-	-	35%
American Indian	-	-	746	-	-	-	-	-	-	45%
Asian	-	-	771	-	-	-	-	-	-	77%
Two or More Races	-	-	758	-	-	-	-	-	-	61%
Students with Disability	12	733	723	25%	8%	17%	50%	0%	50%	21%
English Language Learners	-	-	717	-	-	-	-	-	-	15%
Economically Disadvantaged Students	-	-	734	-	-	-	-	-	-	31%

ACADEMIC ACHIEVEMENT

**GLOUCESTER
SOUTH HARRISON TWP**

**SOUTH HARRISON TOWNSHIP ELEMENTARY SCHOOL
904 MULLICA HILL RD
HARRISONVILLE, NJ 08039-0112**

GRADE SPAN KG-06

PARCC ELA Performance Distribution - Grade - 06

This table presents the grade level outcomes, as measured by PARCC, in all five performance levels for all subgroups. PARCC consists of five performance levels: Level 1 - Did not yet meet grade-level expectations, Level 2 -Partially met expectations, Level 3 - Approached expectations, Level 4 - Met expectations, and Level 5 - Exceeded expectations.

Subgroup	Valid Scores	Mean Scale Score	State Mean Scale Score	% Level_1	% Level_2	% Level_3	% Level_4	% Level_5	% Met/ Exceeded Expectation	State % Met/Exceeded Expectation
Schoolwide	40	756	749	3%	5%	35%	48%	10%	58%	50%
White	37	757	755	3%	3%	38%	46%	11%	57%	59%
African American	-	-	732	-	-	-	-	-	-	29%
Hispanic	-	-	736	-	-	-	-	-	-	34%
American Indian	-	-	743	-	-	-	-	-	-	39%
Asian	-	-	770	-	-	-	-	-	-	77%
Two or More Races	-	-	753	-	-	-	-	-	-	57%
Students with Disability	-	-	718	-	-	-	-	-	-	17%
English Language Learners	-	-	711	-	-	-	-	-	-	11%
Economically Disadvantaged Students	-	-	733	-	-	-	-	-	-	30%

ACADEMIC ACHIEVEMENT

**GLOUCESTER
SOUTH HARRISON TWP**

**SOUTH HARRISON TOWNSHIP ELEMENTARY SCHOOL
904 MULLICA HILL RD
HARRISONVILLE, NJ 08039-0112**

GRADE SPAN KG-06

PARCC MATH - Performance Distribution - Grade - 03

This table presents the grade level outcomes, as measured by PARCC, in all five performance levels for all subgroups. PARCC consists of five performance levels: Level 1 - Did not yet meet grade-level expectations, Level 2 - Partially met expectations, Level 3 - Approached expectations, Level 4 - Met expectations, and Level 5 - Exceeded expectations.

Subgroup	Valid Scores	Mean Scale Score	State Mean Scale Score	% Level_1	% Level_2	% Level_3	% Level_4	% Level_5	% Met/Exceeded Expectation	State % Met/Exceeded Expectation
Schoolwide	52	748	746	2%	15%	23%	58%	2%	60%	46%
White	50	748	752	2%	16%	24%	56%	2%	58%	56%
African American	-	-	728	-	-	-	-	-	-	25%
Hispanic	-	-	733	-	-	-	-	-	-	28%
American Indian	-	-	742	-	-	-	-	-	-	41%
Asian	-	-	772	-	-	-	-	-	-	77%
Two or More Races	-	-	751	-	-	-	-	-	-	54%
Students with Disability	16	733	727	6%	38%	25%	31%	0%	31%	27%
English Language Learners	-	-	724	-	-	-	-	-	-	17%
Economically Disadvantaged Students	-	-	730	-	-	-	-	-	-	26%

ACADEMIC ACHIEVEMENT

GLOUCESTER

SOUTH HARRISON TWP

SOUTH HARRISON TOWNSHIP ELEMENTARY SCHOOL

904 MULICA HILL RD

HARRISONVILLE, NJ 08039-0112

GRADE SPAN KG-06

PARCC MATH - Performance Distribution - Grade - 04

This table presents the grade level outcomes, as measured by PARCC, in all five performance levels for all subgroups. PARCC consists of five performance levels: Level 1 - Did not yet meet grade-level expectations, Level 2 -Partially met expectations, Level 3 - Approached expectations, Level 4 - Met expectations, and Level 5 - Exceeded expectations.

Subgroup	Valid Scores	Mean Scale Score	State Mean Scale Score	% Level_1	% Level_2	% Level_3	% Level_4	% Level_5	% Met/ Exceeded Expectation	State % Met/Exceeded Expectation
Schoolwide	51	745	744	2%	20%	35%	39%	4%	43%	42%
White	40	745	749	3%	20%	33%	43%	3%	45%	50%
African American	-	-	727	-	-	-	-	-	-	20%
Hispanic	-	-	732	-	-	-	-	-	-	26%
American Indian	-	-	740	-	-	-	-	-	-	40%
Asian	-	-	769	-	-	-	-	-	-	75%
Two or More Races	-	-	750	-	-	-	-	-	-	52%
Students with Disability	13	722	724	8%	54%	15%	23%	0%	23%	21%
English Language Learners	-	-	722	-	-	-	-	-	-	15%
Economically Disadvantaged Students	-	-	730	-	-	-	-	-	-	23%

ACADEMIC ACHIEVEMENT

GLOUCESTER

SOUTH HARRISON TWP

SOUTH HARRISON TOWNSHIP ELEMENTARY SCHOOL

904 MULICA HILL RD

HARRISONVILLE, NJ 08039-0112

GRADE SPAN KG-06

PARCC MATH - Performance Distribution - Grade - 05

This table presents the grade level outcomes, as measured by PARCC, in all five performance levels for all subgroups. PARCC consists of five performance levels: Level 1 - Did not yet meet grade-level expectations, Level 2 -Partially met expectations, Level 3 - Approached expectations, Level 4 - Met expectations, and Level 5 - Exceeded expectations.

Subgroup	Valid Scores	Mean Scale Score	State Mean Scale Score	% Level_1	% Level_2	% Level_3	% Level_4	% Level_5	% Met/ Exceeded Expectation	State % Met/Exceeded Expectation
Schoolwide	50	749	744	2%	18%	26%	50%	4%	54%	42%
White	44	751	749	0%	16%	27%	52%	5%	57%	49%
African American	-	-	728	-	-	-	-	-	-	21%
Hispanic	-	-	733	-	-	-	-	-	-	26%
American Indian	-	-	745	-	-	-	-	-	-	46%
Asian	-	-	768	-	-	-	-	-	-	74%
Two or More Races	-	-	749	-	-	-	-	-	-	50%
Students with Disability	12	728	724	8%	42%	25%	25%	0%	25%	19%
English Language Learners	-	-	724	-	-	-	-	-	-	17%
Economically Disadvantaged Students	-	-	731	-	-	-	-	-	-	23%

ACADEMIC ACHIEVEMENT

GLOUCESTER

SOUTH HARRISON TWP

SOUTH HARRISON TOWNSHIP ELEMENTARY SCHOOL

904 MULICA HILL RD

HARRISONVILLE, NJ 08039-0112

GRADE SPAN KG-06

PARCC MATH - Performance Distribution - Grade - 06

This table presents the grade level outcomes, as measured by PARCC, in all five performance levels for all subgroups. PARCC consists of five performance levels: Level 1 - Did not yet meet grade-level expectations, Level 2 -Partially met expectations, Level 3 - Approached expectations, Level 4 - Met expectations, and Level 5 - Exceeded expectations.

Subgroup	Valid Scores	Mean Scale Score	State Mean Scale Score	% Level_1	% Level_2	% Level_3	% Level_4	% Level_5	% Met/ Exceeded Expectation	State % Met/Exceeded Expectation
Schoolwide	39	750	743	3%	10%	31%	56%	0%	56%	42%
White	36	750	749	3%	8%	33%	56%	0%	56%	50%
African American	-	-	726	-	-	-	-	-	-	19%
Hispanic	-	-	731	-	-	-	-	-	-	25%
American Indian	-	-	740	-	-	-	-	-	-	35%
Asian	-	-	768	-	-	-	-	-	-	75%
Two or More Races	-	-	745	-	-	-	-	-	-	44%
Students with Disability	-	-	718	-	-	-	-	-	-	15%
English Language Learners	-	-	718	-	-	-	-	-	-	14%
Economically Disadvantaged Students	-	-	729	-	-	-	-	-	-	23%

ACADEMIC ACHIEVEMENT

GLOUCESTER

SOUTH HARRISON TWP

SOUTH HARRISON TOWNSHIP ELEMENTARY SCHOOL

904 MULICA HILL RD

HARRISONVILLE, NJ 08039-0112

GRADE SPAN KG-06

2015 National Assessment Educational Progress (NAEP)

The National Assessment of Educational Progress (NAEP) is the largest national assessment of what our nation's students know and can do. NAEP assesses fourth-, eighth-, and twelfth-grade students in subjects such as reading, mathematics, science, and writing. The reporting of NAEP scores on state report cards is a federal mandate. The results of NAEP are also published as the Nation's Report Card, and are available for the nation, states, and, in some cases, urban districts. The NAEP scores on the report card include grades four and eight 2015 reading and math scores for New Jersey which are the last scores published.

For subgroup outcomes, visit:

Reading Grade 4 <http://www.nj.gov/education/pr/1415/naep/naep4read.html>
 Reading Grade 8 <http://www.nj.gov/education/pr/1415/naep/naep8read.html>
 Math Grade 4 <http://www.nj.gov/education/pr/1415/naep/naep4math.html>
 Math Grade 8 <http://www.nj.gov/education/pr/1415/naep/naep8math.html>

For more information, visit <http://nces.ed.gov/nationsreportcard/>

Proficiency Percentages

Subject	Grade	State/Nation	Below Basic	Basic	Proficient	Advanced
Reading	Grade 4	State (NJ)	25	33	31	12
	Grade 4	Nation	31	33	27	9
	Grade 8	State (NJ)	20	39	35	6
	Grade 8	Nation	24	42	31	4
Math	Grade 4	State (NJ)	14	39	38	9
	Grade 4	Nation	18	42	33	7
	Grade 8	State (NJ)	21	32	30	16
	Grade 8	Nation	29	38	25	8

ACADEMIC ACHIEVEMENT

GLOUCESTER

SOUTH HARRISON TWP

GRADE SPAN KG-06

15-4880-050

SOUTH HARRISON TOWNSHIP ELEMENTARY SCHOOL

904 MULICA HILL RD

HARRISONVILLE, NJ 08039-0112

NJASK Results - Science Grade Level - 04

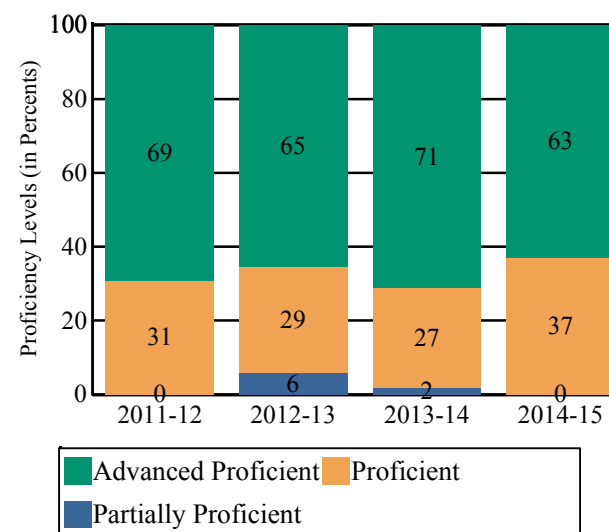
This table presents the grade level proficiency results, as measured by NJASK, in Advanced Proficient, Proficient, and Partially Proficient categories for all appropriate subgroups.

Subgroups	Advanced Proficient	Proficient	Partially Proficient
Schoolwide	63%	37%	0%
White	61%	39%	0%
African American	-	-	-
Hispanic	-	-	-
American Indian	-	-	-
Asian	-	-	-
Two or More Races	-	-	-
Students with Disability	43%	57%	0%
English Language Learners	-	-	-
Economically Disadvantaged Students	-	-	-

Data is presented for subgroups when the count is high enough under ESEA Waiver suppression rules.

NJASK Proficiency Trends - Science - Grade Level - 04

This graph presents the grade level outcomes in the categories of Advanced Proficient, Proficient, and Partially Proficient over the last four years.



COLLEGE AND CAREER READINESS

GLOUCESTER

SOUTH HARRISON TWP

SOUTH HARRISON TOWNSHIP ELEMENTARY SCHOOL

904 MULICA HILL RD

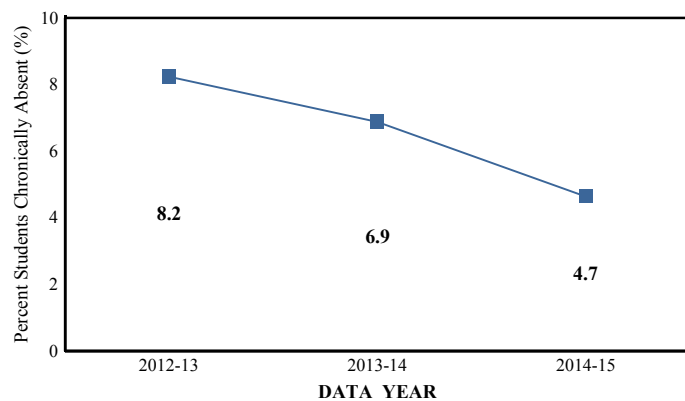
HARRISONVILLE, NJ 08039-0112

GRADE SPAN KG-06

Students in both elementary and middle schools begin to demonstrate college readiness behaviors long before they even enter high school. Among the behaviors that research has shown to be indicative of successfully graduating high school is regularly attending school. For all elementary schools, this includes the percentage of students that are chronically absent each year, defined as missing more than 10% of possible school days.

Chronic Absenteeism Trend

This graph presents the percentage of the enrolled students who were chronically absent for the past three years.

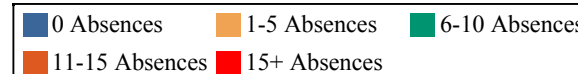
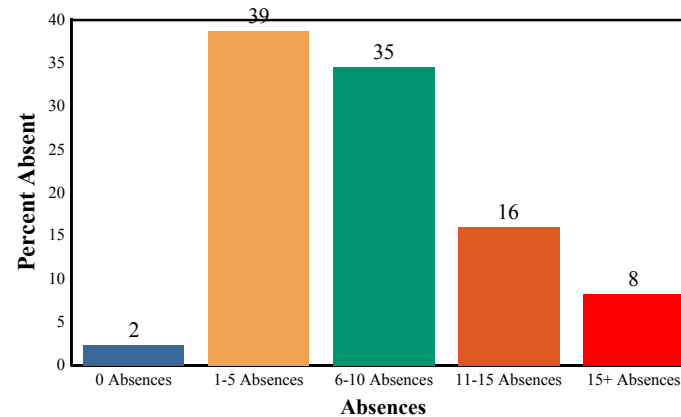


Chronic Absenteeism for 2014-15

4.65%

Absenteeism

The chart below presents the percentage of students who were absent in each category of absence: 0 absences, 1- 5 absences, 6 - 10 absences, 11 - 15 absences, and more than 15 absences. An absence is defined as being 'not present' and includes the days missed regardless of whether they were determined to be excused or unexcused by the school.



STUDENT GROWTH

GLOUCESTER

SOUTH HARRISON TWP

SOUTH HARRISON TOWNSHIP ELEMENTARY SCHOOL

904 MULLICA HILL RD

HARRISONVILLE, NJ 08039-0112

GRADE SPAN KG-06

This section of the performance report presents data about student growth, utilizing the Student Growth Percentile Methodology (SGP). SGP creates a measure of how students progressed in grades 4 through 8 in Language Arts Literacy and in grades 4 through 7 in Math when compared to other students with a similar test score history. A short video explaining the methodology can be found here: <http://www.state.nj.us/education/njsmart/performance/>

The below chart consist of five columns with measures. The first column - Schoolwide Performance - presents the schoolwide median growth score in either English Language Arts/Literacy or Mathematics for all students in the school. The second column - Peer Percentile - indicates how the school's growth performance compares to its group of peer schools. The third column - Statewide Percentile - indicates how a school compares to schools across the state. The last column - Met Target? - indicates whether the school's performance met or exceeded the statewide target, which was set to 35.

The fourth row presents the averages of the peer school percentiles, the averages of statewide percentiles, the percentage of statewide targets met.

Student Growth Indicators	Schoolwide Performance	Peer Percentile	Statewide Percentile	Statewide Target	Met Target?
Student Growth on Language Arts	56	57	67	35	YES
Student Growth on Math	72	97	95	35	YES
		77	81		100%

Student Growth

This table presents for all students with growth scores the interaction between their performance on PARCC and their growth scores. For example, in the top left cell the percentage of students who are both in Level 1 - Did not yet meet expectations AND also demonstrating low growth is displayed.

Language Arts

(Expectations)	GROWTH		
	Low	Typical	High
Did Not Yet Meet	3%	0%	0%
Partially Met	5%	3%	1%
Approached	10%	9%	8%
Met	10%	19%	23%
Exceeded	0%	1%	6%

Math

(Expectations)	GROWTH		
	Low	Typical	High
Did Not Yet Meet	3%	0%	0%
Partially Met	9%	4%	3%
Approached	6%	10%	14%
Met	0%	13%	35%
Exceeded	0%	0%	3%

Low Growth is defined as an **Student Growth Percentile** score less than 35.

Typical Growth is defined as an **Student Growth Percentile** score between 35 and 65.

High Growth is defined as a **Student Growth Percentile** score higher than 65.

WITHIN SCHOOL ACHIEVEMENT GAP

GLOUCESTER

SOUTH HARRISON TWP

SOUTH HARRISON TOWNSHIP ELEMENTARY SCHOOL

904 MULICA HILL RD

HARRISONVILLE, NJ 08039-0112

GRADE SPAN KG-06

This section of the performance report presents data about the achievement gap that exists within a school - as measured by the difference between the students' scale scores at the 25th and 75th percentile in the school, the Interquartile Range (IQR). Taken together with an understanding of the overall and average achievement levels in the school, the IQR furthers an understanding of the range of student outcomes that exist in a school. A school gap smaller than the state gap indicates that the school's range of student outcomes is narrower than the state's while a school gap larger than the state gap indicates that the school's range of student outcomes is broader than the state's.

Grade Level - 03

PARCC Language Arts 25th %ile vs 75th%ile

This table presents the scale scores associated with students at the bottom (0th percentile), the 25th percentile, the 50th percentile, the 75th percentile and the top (99th percentile) of school's distribution.

Percentile	School Scale Score	State Scale Score
99th	801	850
75th	780	770
50th	755	743
25th	732	715
0th	665	650

	Scale Score Gap - School	Scale Score Gap - State
25th vs 75th Gap	48	55

Grade Level - 03

PARCC MATH 25th %ile vs 75th%ile

This table presents the scale scores associated with students at the bottom (0th percentile), the 25th percentile, the 50th percentile, the 75th percentile and the top (99th percentile) of school's distribution.

Percentile	School Scale Score	State Scale Score
99th	791	850
75th	762	767
50th	753	745
25th	735	722
0th	677	650

	Scale Score Gap - School	Scale Score Gap - State
25th vs 75th Gap	27	45

WITHIN SCHOOL ACHIEVEMENT GAP

GLOUCESTER

SOUTH HARRISON TWP

GRADE SPAN KG-06

SOUTH HARRISON TOWNSHIP ELEMENTARY SCHOOL

904 MULLICA HILL RD

HARRISONVILLE, NJ 08039-0112

Grade Level - 04

PARCC Language Arts 25th %ile vs 75th%ile

This table presents the scale scores associated with students at the bottom (0th percentile), the 25th percentile, the 50th percentile, the 75th percentile and the top (99th percentile) of school's distribution.

Percentile	School Scale Score	State Scale Score
99th	818	850
75th	773	773
50th	754	750
25th	731	728
0th	686	650

	Scale Score Gap - School	Scale Score Gap - State
25th vs 75th Gap	42	45

Grade Level - 05

PARCC Language Arts 25th %ile vs 75th%ile

This table presents the scale scores associated with students at the bottom (0th percentile), the 25th percentile, the 50th percentile, the 75th percentile and the top (99th percentile) of school's distribution.

Percentile	School Scale Score	State Scale Score
99th	805	850
75th	777	773
50th	759	751
25th	743	728
0th	685	650

	Scale Score Gap - School	Scale Score Gap - State
25th vs 75th Gap	34	45

Grade Level - 04

PARCC MATH 25th %ile vs 75th%ile

This table presents the scale scores associated with students at the bottom (0th percentile), the 25th percentile, the 50th percentile, the 75th percentile and the top (99th percentile) of school's distribution.

Percentile	School Scale Score	State Scale Score
99th	805	850
75th	763	764
50th	744	742
25th	725	721
0th	692	650

	Scale Score Gap - School	Scale Score Gap - State
25th vs 75th Gap	38	43

Grade Level - 05

PARCC MATH 25th %ile vs 75th%ile

This table presents the scale scores associated with students at the bottom (0th percentile), the 25th percentile, the 50th percentile, the 75th percentile and the top (99th percentile) of school's distribution.

Percentile	School Scale Score	State Scale Score
99th	793	850
75th	762	763
50th	751	743
25th	732	723
0th	673	650

	Scale Score Gap - School	Scale Score Gap - State
25th vs 75th Gap	30	40

WITHIN SCHOOL ACHIEVEMENT GAP

GLOUCESTER

SOUTH HARRISON TWP

GRADE SPAN KG-06

SOUTH HARRISON TOWNSHIP ELEMENTARY SCHOOL

904 MULICA HILL RD

HARRISONVILLE, NJ 08039-0112

Grade Level - 06

PARCC Language Arts 25th %ile vs 75th%ile

This table presents the scale scores associated with students at the bottom (0th percentile), the 25th percentile, the 50th percentile, the 75th percentile and the top (99th percentile) of school's distribution.

Percentile	School Scale Score	State Scale Score
99th	802	850
75th	772	770
50th	758	749
25th	741	726
0th	681	650

	Scale Score Gap - School	Scale Score Gap - State
25th vs 75th Gap	31	44

Grade Level - 06

PARCC MATH 25th %ile vs 75th%ile

This table presents the scale scores associated with students at the bottom (0th percentile), the 25th percentile, the 50th percentile, the 75th percentile and the top (99th percentile) of school's distribution.

Percentile	School Scale Score	State Scale Score
99th	782	850
75th	771	763
50th	754	742
25th	742	721
0th	679	650

	Scale Score Gap - School	Scale Score Gap - State
25th vs 75th Gap	29	42

SCHOOL CLIMATE
GLOUCESTER
SOUTH HARRISON TWP

State of New Jersey
2014-15

GRADE SPAN KG-06

15-4880-050
SOUTH HARRISON TOWNSHIP ELEMENTARY SCHOOL
904 MULICA HILL RD
HARRISONVILLE, NJ 08039-0112

Length of School Day

This table presents the amount of time a school is in session for a typical student on a normal school day.

	School
2014-15	6 Hrs. 47 Mins.

Student Suspension Rate

This table presents the percentage of students who were suspended one or more times during the school year.

	School
2014-15	0.3%

Instructional Time

This table presents the amount of time that a typical student is engaged in instructional activities under the supervision of a certified teacher.

2014-15	School
Full Time	5 Hrs. 46 Mins.
Shared Time	0 Hrs. 0 Mins.

Student Expulsions

This table presents the number of students who were expelled from the school and district during the school year.

	School
2014-15	0

Student to Staff Ratio

This table presents the count of students per faculty member or administrator in the school. All staff are counted in full-time equivalents.

2014-15	School
Faculty	13
Administrators	212

SCHOOL PEER GROUP

GLOUCESTER

SOUTH HARRISON TWP

SOUTH HARRISON TOWNSHIP ELEMENTARY SCHOOL

904 MULLICA HILL RD

HARRISONVILLE, NJ 08039-0112

GRADE SPAN KG-06

This table presents the list of peer schools in alphabetical order by county name that was created specifically for this school (highlighted in yellow). Peer schools are drawn from across the state and represent schools that have similar grade configurations and that are educating students of similar demographic characteristics, as measured by enrollment in Free/Reduced Lunch Programs, Limited English Proficiency or Special Education Programs.

<u>COUNTY NAME</u>	<u>DISTRICT NAME</u>	<u>SCHOOL NAME</u>	<u>CDS CODE</u>	<u>GRADES PAN</u>	<u>ECONOMICALLY DISADVANTAGED</u>	<u>ENGLISH LANGUAGE LEARNERS</u>	<u>SPECIAL EDUCATION</u>
BERGEN	HILLSDALE BORO	ANN BLANCHE SMITH	03-2180-010	KG-04	9.1%	2.3%	14.7%
BERGEN	OAKLAND BORO	HEIGHTS ELEMENTARY SCHOOL	03-3760-050	KG-05	6.3%	0.3%	16.5%
BERGEN	WESTWOOD REGIONAL	BROOKSIDE ELEMENTARY SCHOOL	03-5755-070	KG-05	10%	3.9%	9.7%
BURLINGTON	MANSFIELD TWP	MANSFIELD TOWNSHIP SCHOOL DISTRICT	05-2960-040	PK-06	6.9%	0.5%	13%
BURLINGTON	MEDFORD TWP	HAINES SIXTH GRADE CENTER	05-3080-050	06	7.6%	0.6%	13.9%
CAMDEN	CHERRY HILL TWP	BRET HARTE ELEMENTARY SCHOOL	07-0800-068	KG-05	7.1%	0%	15.5%
CAMDEN	VOORHEES TWP	SIGNAL HILL SCHOOL	07-5400-095	PK-05	8.1%	0.9%	18.5%
ESSEX	NUTLEY TOWN	WASHINGTON SCHOOL	13-3750-100	KG-06	9.4%	4.7%	9.4%
ESSEX	SOUTH ORANGE-MAPLEWOOD	SOUTH MOUNTAIN ELEMENTARY/ANNEX	13-4900-140	PK-05	6.9%	0%	7.6%
GLOUCESTER	SOUTH HARRISON TWP	SOUTH HARRISON TOWNSHIP ELEMENTARY SCHOOL	15-4880-050	KG-06	7%	0%	18.1%
HUNTERDON	LEBANON BORO	LEBANON BOROUGH SCHOOL	19-2590-050	PK-06	6.4%	0%	4.8%
HUNTERDON	LEBANON TWP	VALLEY VIEW SCHOOL	19-2600-060	PK-04	7.1%	0.3%	19.9%
HUNTERDON	READINGTON TWP	THREE BRIDGES SCHOOL	19-4350-060	PK-03	8.4%	1.2%	12%
MIDDLESEX	MONROE TWP	APPLEGARTH ELEMENTARY SCHOOL	23-3290-300	04-05	6.9%	0.6%	15.3%
MIDDLESEX	MONROE TWP	BROOKSIDE ELEMENTARY SCHOOL	23-3290-050	03-05	6.9%	0%	23.9%
MIDDLESEX	MONROE TWP	WOODLAND ELEMENTARY SCHOOL	23-3290-030	03-05	6.9%	0.9%	23.7%
MIDDLESEX	SOUTH BRUNSWICK TWP	CAMBRIDGE ELEMENTARY SCHOOL	23-4860-060	PK-05	6.7%	0.5%	6%
MIDDLESEX	SOUTH BRUNSWICK TWP	INDIAN FIELDS ELEMENTARY SCHOOL	23-4860-100	PK-05	9.3%	4.6%	8.8%
MONMOUTH	MANALAPAN-ENGLISHTOWN REG	CLARK MILLS SCHOOL	25-2920-050	KG-05	7.5%	0.2%	12.4%
MONMOUTH	MANALAPAN-ENGLISHTOWN REG	LAFAYETTE MILLS SCHOOL	25-2920-055	01-05	6.9%	0.4%	13.4%
MONMOUTH	MANALAPAN-ENGLISHTOWN REG	WEMROCK BROOK SCHOOL	25-2920-110	01-05	6.7%	0.1%	12%

SCHOOL PEER GROUP

GLOUCESTER

SOUTH HARRISON TWP

SOUTH HARRISON TOWNSHIP ELEMENTARY SCHOOL

904 MULICA HILL RD

HARRISONVILLE, NJ 08039-0112

		GRADE SPAN	KG-06				
MONMOUTH	MIDDLETOWN TWP	MIDDLETOWN VILLAGE ELEMENTARY SCHOOL	25-3160-130	KG-05	8.2%	1.2%	19.4%
MONMOUTH	MILLSTONE TWP	MILLSTONE TOWNSHIP ELEMENTARY SCHOOL	25-3200-060	03-05	7.4%	1.2%	17.6%
MONMOUTH	UPPER FREEHOLD REGIONAL	NEWELL ELEMENTARY SCHOOL	25-5310-060	PK-04	9%	2.1%	18.8%
MORRIS	MADISON BORO	CENTRAL AVENUE SCHOOL	27-2870-060	PK-05	8.7%	2.9%	12.2%
MORRIS	ROCKAWAY TWP	STONY BROOK ELEMENTARY SCHOOL	27-4490-080	KG-05	7.1%	0%	17.9%
SOMERSET	GREEN BROOK TWP	IRENE E. FELDKIRCHNER ELEMENTARY SCHOOL	35-1810-050	PK-04	7.9%	1.5%	10.9%
SOMERSET	HILLSBOROUGH TWP	AUTEN ROAD INTERMEDIATE SCHOOL	35-2170-034	05-06	7.9%	0.4%	17.2%
SUSSEX	BYRAM TWP	BYRAM LAKES ELEMENTARY SCHOOL	37-0640-010	PK-04	6.5%	0%	16.7%
SUSSEX	SANDYSTON-WALPACK TWP	SANDYSTON WALPACK CONSOLIDATED SCHOOL	37-4650-050	KG-06	6.9%	0%	15.9%
UNION	SCOTCH PLAINS-FANWOOD REG	EVERGREEN SCHOOL	39-4670-090	PK-04	7.1%	0%	12.7%