

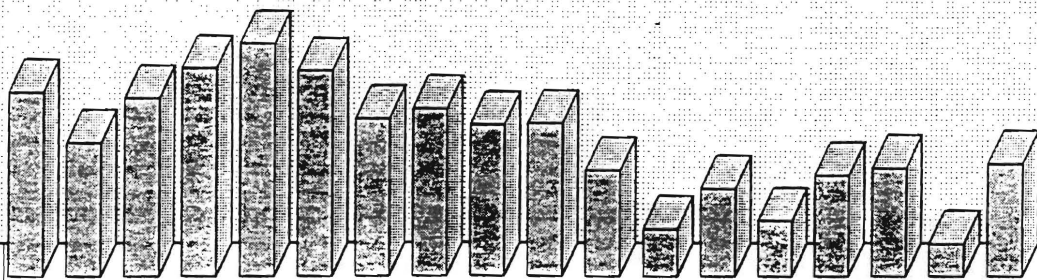
State of New Jersey
Department of Human Services
Division of Family Development

974.905
844.4

CURRENT PROGRAM STATISTICS

November 1995

Karen Highsmith, Acting Director



State of New Jersey
Department of Human Services
Division of Family Development

CURRENT PROGRAM STATISTICS
November 1995

TABLE OF CONTENTS

	Page
Highlights of Current Program Statistics.....	1-3
Statistics by County, November 1995	
Table 1 AFDC	4
Graph 1 Current AFDC Families.....	5
Table 2 Food Stamp Program.....	6
Graph 2 Current Food Stamp Households/Persons.....	7
Table 3 Emergency Assistance Program.....	8
Graph 3 Current Families Receiving Emergency Assistance.....	9
Table 4 Family Development Program	10
State Summary, 1993 - 1995	
Table 5 AFDC, November 1993 - November 1995	11
Graph 4 Families Receiving AFDC, 11/93-11/95.....	12
Table 6 Food Stamp Program, November 1993 - November 1995.....	13
Graph 5 Food Stamp Households, 11/93-11/95.....	14
Graph 6 Food Stamp Recipients, 11/93-11/95.....	15
Table 7 Emergency Assistance Program, November 1993 - November 1995.....	16
Graph 7 AFDC Families Receiving Emergency Assistance, 11/93-11/95	17
Table 8 JOBS/FDP Participation Rates, by County and Statewide, April 1994 - November 1995	18
Graph 8 JOBS/FDP Participation Rates, 4/94-11/95	19
Table 9 General Assistance, May 1993 -May 1995	20
Graph 9 General Assistance Recipients, 5/93 -5/95	21
Table 10 Child Support and Paternity Federal Fiscal Years 1994-1995	22
Explanatory Notes.....	23-24
Supplement	
Table 11 General Assistance Recipients by County and Municipality, May 1995.....	25

Highlights of Current Program Statistics

AFDC (Tables 1 and 5, Graphs 1 and 4)

117,000 eligible families in New Jersey were receiving AFDC as of the end of November 1995:

- Less than 105,500 single head of household families (Regular AFDC, C segment).
- Among two-parent families, about 3200 in each category of Unemployed Parent families (F Segment) and State AFDC families (N Segment).
- Almost 5200 Medicaid Only families.
- The largest numbers of families by county: Essex with 29,700, Hudson with 18,500, and Camden County with 13,400. (52 percent of all AFDC families)
- Other counties ranged from under 200 families in Hunterdon to 7,550 in Passaic County.

There were about 500 fewer eligible families in November than in October 1995. The decline in all but one month since the May/June 1994 peak of 124,600 totalled nearly 8,000.

- There were 500 fewer C segment families in November 1995 than in October, and 6300 less than the peak of 111,800 in June 1994.
- F segment families declined from over 4500 in May 1994 to less than 3200 by November 1995.
- State AFDC (N segment) grew from about 2900 families in August 1993 to almost 3500 by June 1994, but has since declined slowly to 3200 by November 1995.
- Medicaid Only families remained at or below 5000 in 1993 and 1994, but averaged nearly 5200 for the first eleven months of 1995.

FOOD STAMP PROGRAM (Tables 2 and 6, Graphs 2, 5, and 6)

At the end of November 1995, about 221,400 households were participating in the Food Stamp Program (Non-AFDC exceed AFDC Food Stamp households for the first time):

- 110,600 AFDC households with 346,000 persons.
- 110,800 Other Low Income households with 168,800 persons.
- 48 percent were in Essex (55,500), Hudson (29,800) and Camden (21,800) Counties.
- Food Stamp households included about 514,800 persons, 245,500 adults and 269,400 children.
- In seven counties (Bergen, Hunterdon, Monmouth, Morris, Somerset, Sussex, and Warren) the number of adults exceeded the number of children in Food Stamp households.

Highlights of Current Program Statistics

AFDC (Tables 1 and 5, Graphs 1 and 4)

117,000 eligible families in New Jersey were receiving AFDC as of the end of November 1995:

- Less than 105,500 single head of household families (Regular AFDC, C segment).
- Among two-parent families, about 3200 in each category of Unemployed Parent families (F Segment) and State AFDC families (N Segment).
- Almost 5200 Medicaid Only families.
- The largest numbers of families by county: Essex with 29,700, Hudson with 18,500, and Camden County with 13,400. (52 percent of all AFDC families)
- Other counties ranged from under 200 families in Hunterdon to 7,550 in Passaic County.

There were about 500 fewer eligible families in November than in October 1995. The decline in all but one month since the May/June 1994 peak of 124,600 totalled nearly 8,000.

- There were 500 fewer C segment families in November 1995 than in October, and 6300 less than the peak of 111,800 in June 1994.
- F segment families declined from over 4500 in May 1994 to less than 3200 by November 1995.
- State AFDC (N segment) grew from about 2900 families in August 1993 to almost 3500 by June 1994, but has since declined slowly to 3200 by November 1995.
- Medicaid Only families remained at or below 5000 in 1993 and 1994, but averaged nearly 5200 for the first eleven months of 1995.

FOOD STAMP PROGRAM (Tables 2 and 6, Graphs 2, 5, and 6)

At the end of November 1995, about 221,400 households were participating in the Food Stamp Program (Non-AFDC exceed AFDC Food Stamp households for the first time):

- 110,600 AFDC households with 346,000 persons.
- 110,800 Other Low Income households with 168,800 persons.
- 48 percent were in Essex (55,500), Hudson (29,800) and Camden (21,800) Counties.
- Food Stamp households included about 514,800 persons, 245,500 adults and 269,400 children.
- In seven counties (Bergen, Hunterdon, Monmouth, Morris, Somerset, Sussex, and Warren) the number of adults exceeded the number of children in Food Stamp households.

Food Stamp households in New Jersey remained close to 215,000 families between August 1993 and February 1994, and jumped to about 222,000 families in March 1994. The number has remained between 220,000 and 222,000 since then, except for a peak in March 1995 of almost 225,000.

- The numbers of AFDC(FS) households and Other Low Income households have converged, with the latter surpassing the former for the first time. AFDC(FS) households declined from nearly 115,900 in May 1994 to less than 110,600 by November 1995. Other Low Income households increased from 100,300 in November 1993 to 110,800 two years later.
- Total Recipients declined by almost 16,000 from 529,500 in March 1995 to 513,500 in September, but increased by more than 1000 in October and November.
- The number of Recipient Adults, which peaked at 250,000 in March 1995, has remained around 245,000 for most of 1995. This is about the same as 1994 but more than 1993 when there were fewer than 240,000 recipient adults.
- The number of Recipient Children which peaked at almost 283,000 in March 1994 and almost 280,000 in March 1995, has been less than 270,000 since September 1995.

EMERGENCY ASSISTANCE (Tables 3 and 7, Graphs 3 and 7)

[These data are now based on FAMIS report #FM-457, which provides an unduplicated count of cases for which Emergency Assistance payments were made in the report month, based on warrant registers. This may differ somewhat from previous data showing cases by month of service provision, which will no longer be reported directly by each county in order to reduce reporting requirements and avoid methodological inconsistencies between counties.]

In November 1995 4,865 eligible AFDC families received Emergency Assistance (EA) payments in New Jersey:

- 1816 families with Temporary Rental Assistance (TRA)
- 384 motel placements
- 302 emergency shelter placements
- All other AFDC-EA accounted for 2,363 families, including back rent, back utilities, security deposits, furnishings, clothing and food allowance, or transitional housing.
- 1356 families in Essex County received EA; with 649 in Middlesex, and 497 in Passaic. All other counties had between 12 and 394, with nine counties under 100.

In the past two years the highest numbers of families receiving EA were in March and May of 1994, each with close to 8000. The number has declined since, and dropped below 5000 for the first time in November 1995.

- TRA was provided to about 3600 families each month in early 1994, and has steadily declined to under 2000 since September 1995.
- Emergency Shelter and Motel Housing have each been provided to under 500 families each month, except for three months in 1994 and one in 1995 when Motel Housing exceeded 500.
- Other EA was provided to about 3500 families in most months of 1994 and under 3000 in each month of 1995.

JOBS/FDP PARTICIPATION RATES (Table 8, Graph 8)

Statewide participation in JOBS/FDP in November 1995 was 27.2 percent, slightly below October, but still above any previous months and more than six percent higher than a year earlier. The 1995 pattern has been similar to 1994, though an upward shift is evident.

- Since April 1994, most counties have shown upward movement in participation rates. Most counties tend to show small fluctuations, with Essex, Hudson, Middlesex, Ocean, and Passaic having clear upward movement. Bergen, Burlington, Camden, Cape May, Gloucester, Mercer, Monmouth and Union have had minimal or slight upward movement. Atlantic, and Cumberland have had large fluctuations, but maintained very high participation rates. While Sussex, Warren and Salem also experienced fluctuations, their high rates have not been as sustained. Hunterdon and Somerset jumped to higher levels in late 1994 or early 1995. Morris increased markedly in 1995.
- After exceeding 20 percent for the first time in October, Essex dropped back slightly, as did thirteen other counties in November. Also under 20 percent were Camden and Cape May Counties. Burlington and Passaic were between 30 and 40 percent; Hunterdon, and Warren were between 40 and 50 percent; Atlantic, Cumberland, Morris, Somerset and Sussex all exceeded 50 percent. All other counties were between 20 and 30 percent.

GENERAL ASSISTANCE (Table 9, Graph 9)

For the period May 1993 through May 1995 (the latest available information), the number of GA recipients peaked at about 37,400 in March 1993 and at 38,100 in March 1994. The level stayed around 35,000 from September through December 1994. January through April 1995 remained below 36,000, with May declining to 33,600.

- The number of employable recipients also peaked in March 1993 (25,900) and March 1994 (26,400). The level remained slightly over 23,000 from September through December 1994. After increasing to over 24,000 in January 1995, the level remained below 24,000 in February, March and April, and declined to 22,000 in May.
- Unemployable GA recipients remained between 11,000 and 11,700 from March 1993 through April 1994, and hovered around 12,000 from May through November 1994. After declining to less than 11,300 by February 1995, Unemployables were up to 12,000 in March and April, and down to 11,500 in May.

CHILD SUPPORT AND PATERNITY COLLECTIONS (Table 10)

Total collections of the Child Support and Paternity Program grew from about \$534 million to more than \$586 million from FFY1994 to FFY1995, an increase of almost 10 percent.

- Total AFDC/Foster Care collections increased from almost \$92 million to about \$97 million, or 5.3 percent.
- Non-AFDC collections grew from \$442 million to almost \$490 million, or 10.7 percent.

New Jersey Department of Human Services
Division of Family Development

TABLE 1

AFDC Program

**NUMBER OF APPLICATIONS AND TERMINATIONS DURING REPORT MONTH, AND
NUMBER OF ELIGIBLE FAMILIES RECEIVING AFDC AT END OF REPORT MONTH**

November 1995

County	Applications Approved	Terminations	Regular AFDC (C Segment)	Unemployed Parents (F)	State AFDC (N)	Medicaid Only	TOTAL AFDC
Atlantic	350	341	3,727	124	70	146	4,067
Bergen	138	146	2,588	143	126	93	2,950
Burlington	277	220	2,676	86	79	217	3,058
Camden	800	931	11,721	558	370	753	13,402
Cape May	125	104	866	60	55	60	1,041
Cumberland	289	241	3,183	181	188	217	3,769
Essex	991	1,067	28,311	437	239	732	29,719
Gloucester	208	258	2,279	115	77	162	2,633
Hudson	510	705	16,535	344	640	957	18,476
Hunterdon	21	18	165	5	11	15	196
Mercer	417	487	4,519	80	100	303	5,002
Middlesex	355	448	5,200	225	295	532	6,252
Monmouth	212	275	3,957	81	185	67	4,290
Morris	67	64	834	31	29	43	937
Ocean	228	236	2,984	174	161	226	3,545
Passaic	360	394	6,921	284	275	69	7,549
Salem	111	117	854	15	26	65	960
Somerset	138	116	862	48	35	129	1,074
Sussex	44	64	328	9	5	42	384
Union	389	379	6,413	134	204	326	7,077
Warren	53	49	522	30	29	35	616
NJ TOTAL	6,083	6,660	105,445	3,164	3,199	5,189	116,997

Data Sources: Data is derived from NJ Division of Family Development's FAMIS report # FF-012.

GRAPH 1

Current AFDC Families November 1995, By County

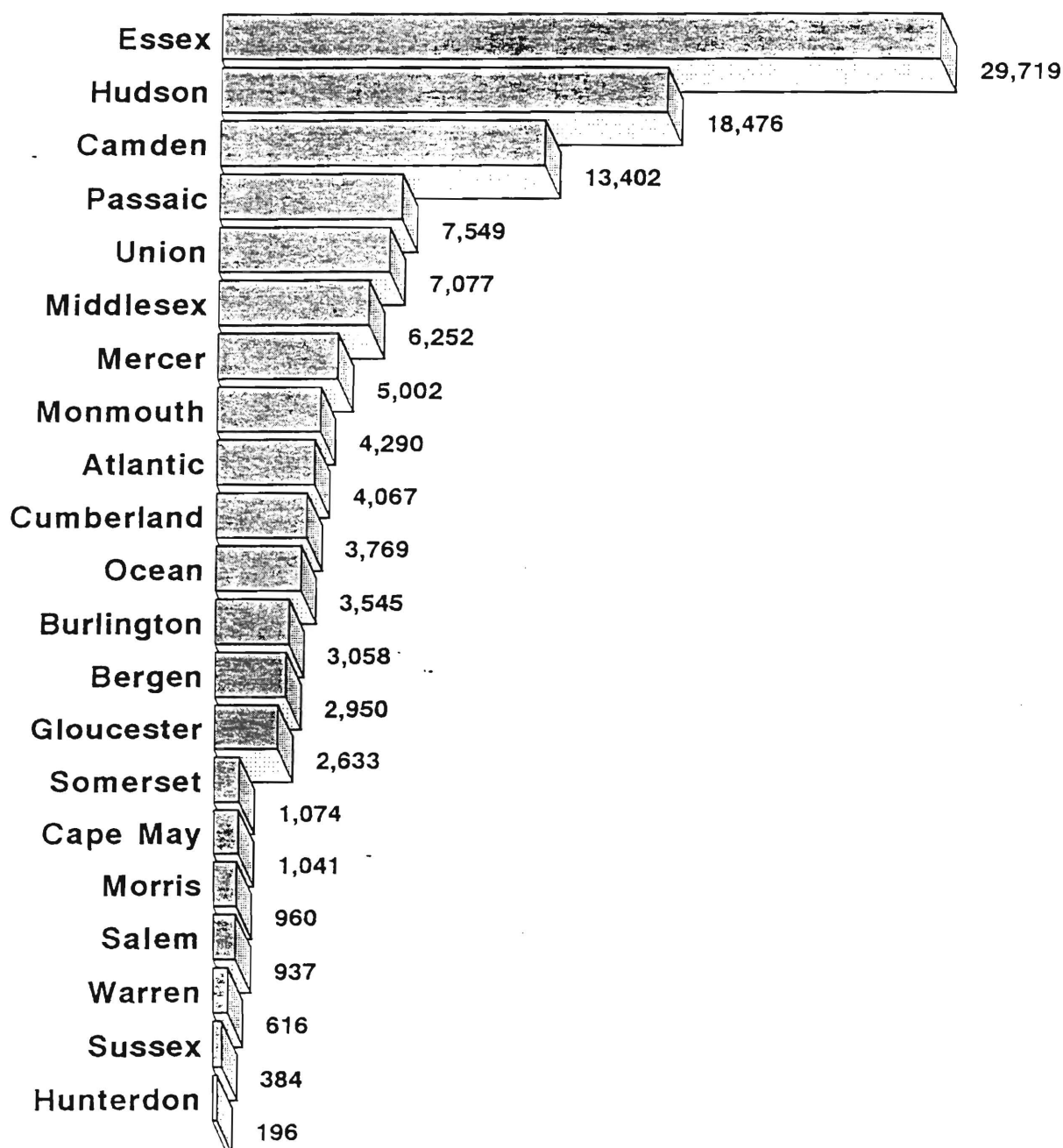


TABLE 2

FOOD STAMP Program

NUMBER OF ATP'S ISSUED TO HOUSEHOLDS, PERSONS, ADULTS AND CHILDREN AT THE END OF THE REPORT MONTH

November 1995

County	HOUSEHOLDS			TOTAL	PERSONS			
	AFDC	Other low income	TOTAL		AFDC	Other low income	Adults	Children
Atlantic	3,852	4,666	8,518	18,842	12,384	6,458	9,204	9,638
Bergen	2,721	5,660	8,381	16,753	8,047	8,706	9,742	7,011
Burlington	2,760	2,978	5,738	13,294	8,370	4,924	6,457	6,837
Camden	12,797	8,977	21,774	54,708	41,652	13,056	24,512	30,196
Cape May	1,126	1,244	2,370	5,944	3,767	2,177	2,873	3,071
Cumberland	3,701	2,708	6,409	16,739	12,370	4,369	7,642	9,097
Essex	29,246	26,282	55,528	127,856	90,257	37,599	59,511	68,345
Gloucester	2,312	1,952	4,264	10,515	7,161	3,354	4,924	5,591
Hudson	17,477	12,278	29,755	71,939	53,117	18,822	32,457	39,482
Hunterdon	142	359	501	1,024	423	601	580	444
Mercer	4,582	4,492	9,074	19,858	14,044	5,814	9,437	10,421
Middlesex	5,580	5,921	11,501	25,758	16,684	9,074	12,755	13,003
Monmouth	4,055	6,358	10,413	22,502	12,830	9,672	11,612	10,890
Morris	843	1,884	2,727	5,488	2,488	3,000	3,171	2,317
Ocean	3,456	4,531	7,987	20,055	11,275	8,780	9,469	10,586
Passaic	7,118	9,327	16,445	38,455	23,410	15,045	18,497	19,958
Salem	903	824	1,727	4,203	2,885	1,318	1,961	2,242
Somerset	997	1,798	2,795	5,524	2,851	2,673	3,011	2,513
Sussex	308	657	965	2,233	946	1,287	1,184	1,049
Union	6,081	6,877	12,958	29,527	19,297	10,230	14,559	14,968
Warren	573	990	1,563	3,606	1,776	1,830	1,897	1,709
NJ TOTAL	110,630	110,763	221,393	514,823	346,034	168,789	245,455	269,368

ATP - Authorization to Participate, may include some duplication

Data Sources: Data is derived from NJ Division of Family Development's FAMIS report # FB-160.

GRAPH 2

Food Stamp Households

November 1995, By County

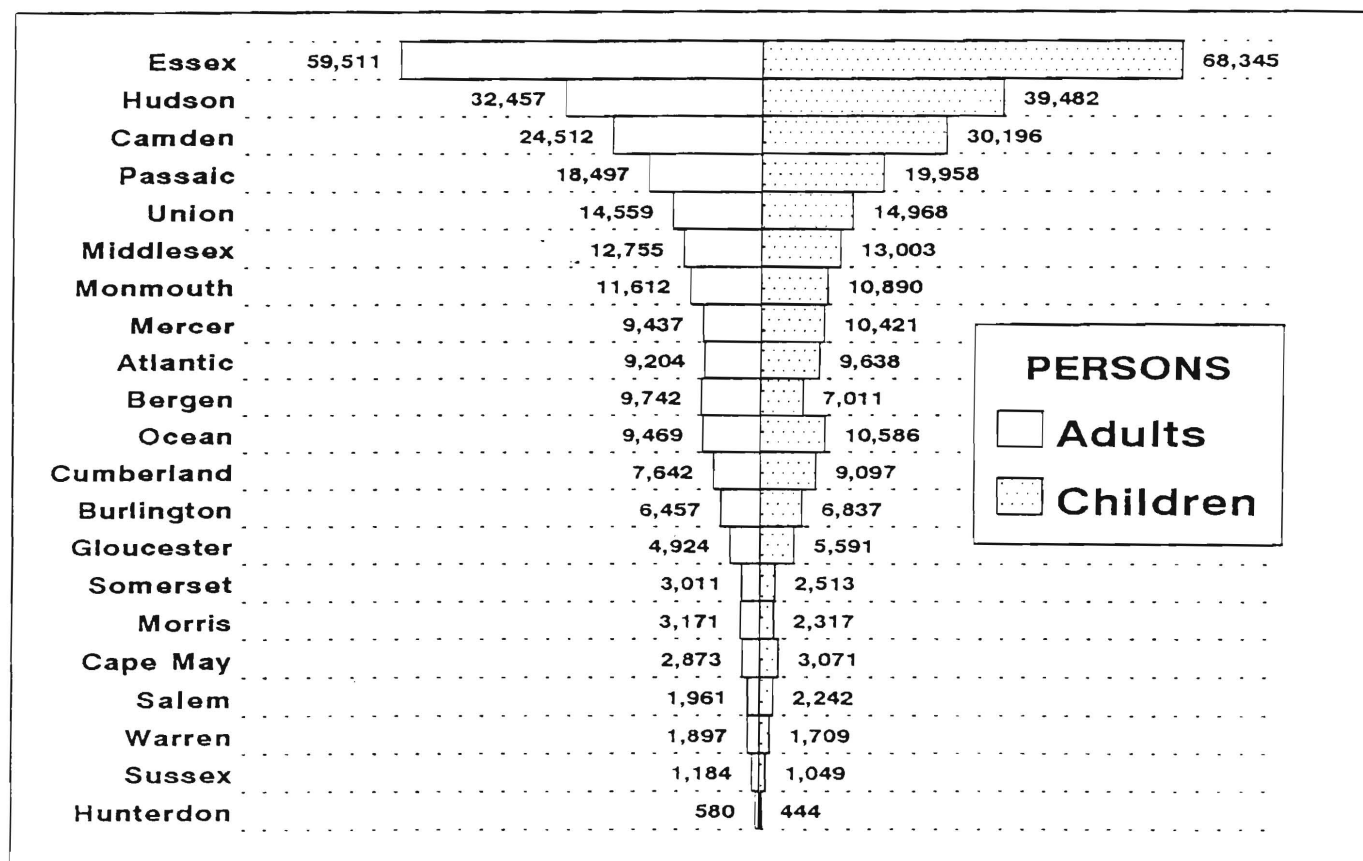
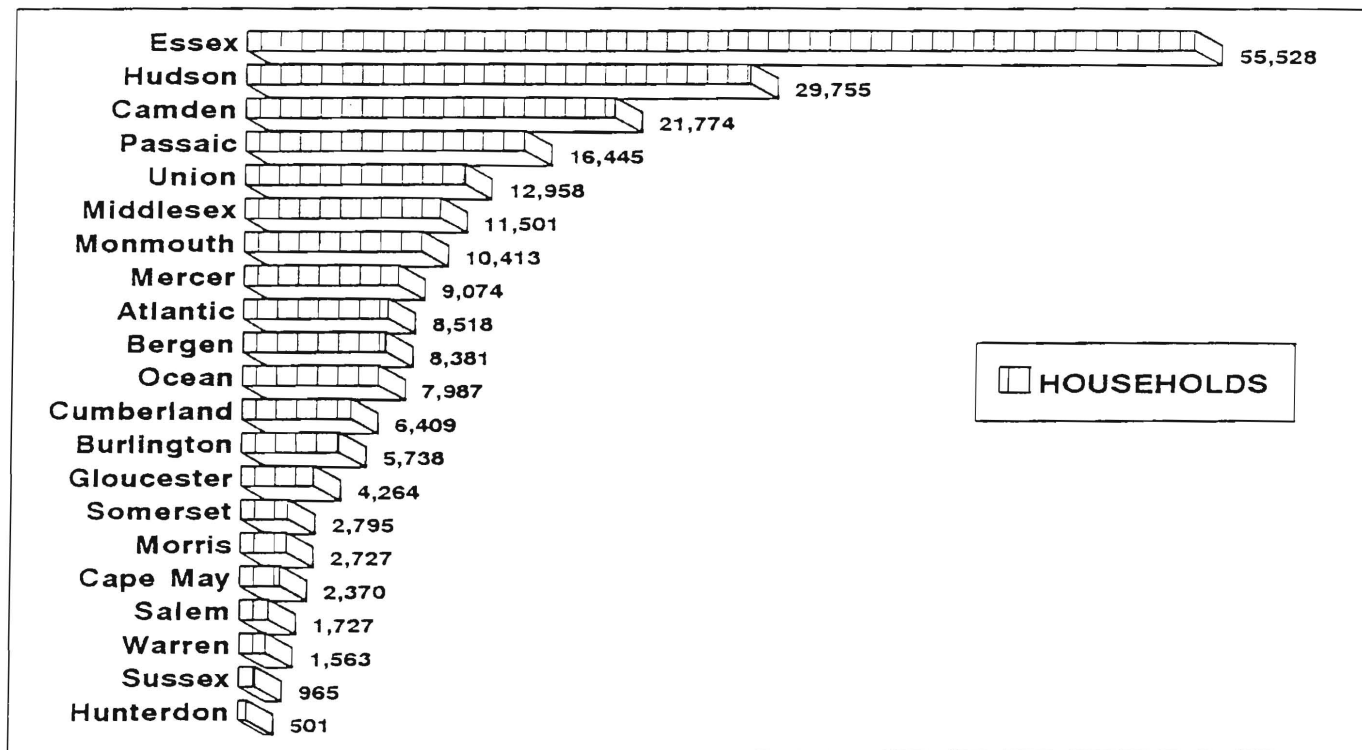


TABLE 3

EMERGENCY ASSISTANCE Program for AFDC recipients

**NUMBER OF ELIGIBLE FAMILIES RECEIVING EMERGENCY ASSISTANCE PAYMENTS
(UNDUPLICATED CASES)**

November 1995

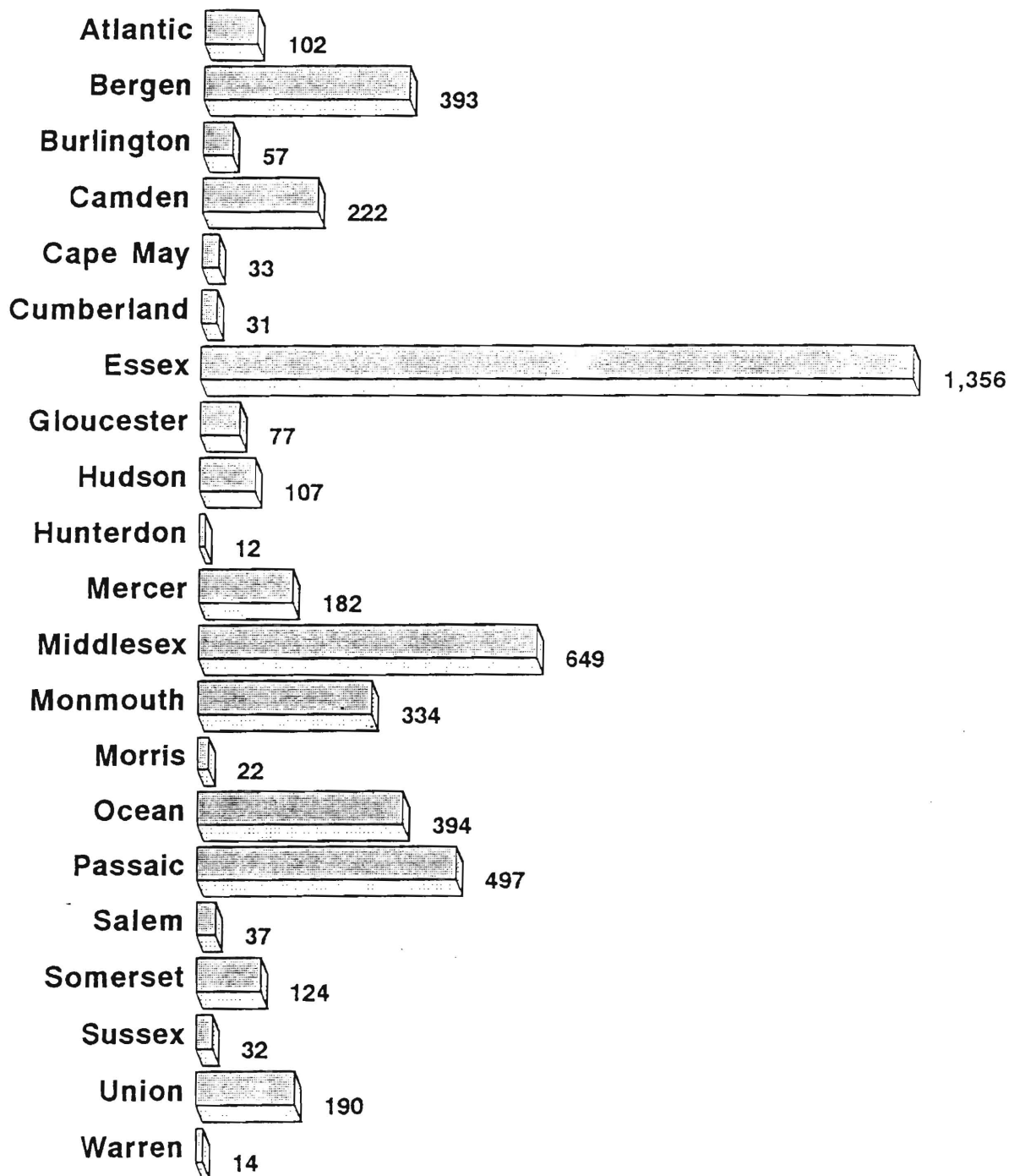
County	Total families receiving EA	Temporary rental assist.	Motel Housing	Emergency Shelter	Other AFDC-EA
ATLANTIC	102	50	7	8	37
BERGEN	393	220	37	23	113
BURLINGTON	57	6	2	33	16
CAMDEN	222	65	1	30	126
CAPE MAY	33	2	6	0	25
CUMBERLAND	31	0	1	14	16
ESSEX	1,356	677	34	47	598
GLOUCESTER	77	29	5	27	16
HUDSON	107	22	5	16	64
HUNTERDON	12	4	0	5	3
MERCER	182	79	19	0	84
MIDDLESEX	649	365	29	6	249
MONMOUTH	334	116	51	6	161
MORRIS	22	0	0	14	8
OCEAN	394	122	115	2	155
PASSAIC	497	1	16	16	464
SALEM	37	9	11	3	14
SOMERSET	124	18	22	19	65
SUSSEX	32	5	8	8	11
UNION	190	26	7	23	134
WARREN	14	0	8	2	4
NJ TOTAL	4,865	1816	384	302	2,363

Data Sources: Data is derived from NJ Division of Family Development FAMIS Report #FM-457.

GRAPH 3

Current Families Receiving Emergency Assistance

November 1995, By County



NEW JERSEY DEPARTMENT OF HUMAN SERVICES
DIVISION OF FAMILY DEVELOPMENT

TABLE 4
FAMILY DEVELOPMENT PROGRAM
STATISTICAL SUMMARY

COUNTY	SNAPSHOT OF ACTIVITY AS OF NOVEMBER 1995				ACTIVITY FOR MONTH OF NOVEMBER 1995					
	TOTAL NONEXMT JOBS/FDP RECT- PIENTS	EMPLOYMENT DIRECTED ACTIVITIES(1)			PARTIC IN EDAs & REC SUPPORT SERVICES		PARTIC W/ Iat C M INTV	# EMPL THIS MONTH & STILL REC AFDC	# CLSD ON FAMIS RE: EARNGS(2)	POST AFDC & REC CH CARE
		TRAIN- ING	EDUCA- TION	JOB SEARCH	TREs	CHILD CARE				
ATLANTIC	1,625	295	279	98	357	246	178	61	65	139
BERGEN	1,772	205	112	36	173	124	29	12	46	65
BURLINGTON	1,525	280	186	40	338	186	127	52	46	129
CAMDEN	8,100	426	509	54	938	548	243	58	149	254
CAPE MAY	637	47	28	32	47	16	58	10	17	3
CUMBERLAND	1,609	313	307	34	608	277	192	37	63	110
ESSEX	17,266	1,371	1,403	192	2,220	1,418	116	40	192	127
GLOUCESTER	1,187	234	128	30	326	93	85	9	33	60
HUDSON	11,881	1,060	1,521	72	1,974	981	294	31	152	200
HUNTERDON	96	7	17	9	14	10	2	7	7	6
MERCER	2,908	181	295	77	208	179	34	29	77	98
MIDDLESEX	3,603	588	293	92	474	145	269	90	90	95
MONMOUTH	2,585	242	256	73	424	302	96	38	68	148
MORRIS	471	139	47	35	99	60	84	13	17	27
OCEAN	2,067	300	180	127	225	137	127	50	78	109
PASSAIC	3,964	938	397	55	958	311	169	39	99	137
SALEM	422	70	96	3	121	92	15	11	16	44
SOMERSET	550	81	80	14	93	77	22	19	22	42
SUSSEX	207	37	58	53	51	38	23	7	6	30
UNION	3,945	322	409	96	548	229	162	24	77	109
WARREN	395	38	62	30	31	25	5	7	7	17
STATE	66,815	7,174	6,663	1,252	10,227	5,494	2,330	644	1,327	1,949

(1) - The number of participants receiving support services may occasionally exceed the number actively participating in EDAs. This can result from extended assessment or evaluation activities or, the issuance of bridge payments.

(2) - FAMIS file date 11/18/95

New Jersey Department of Human Services
Division of Family Development

TABLE 5
AFDC Program State Summary

NUMBER OF APPLICATIONS AND TERMINATIONS DURING REPORT MONTH,
AND NUMBER OF ELIGIBLE FAMILIES RECEIVING AFDC AT END OF REPORT MONTH

November 1993 through November 1995

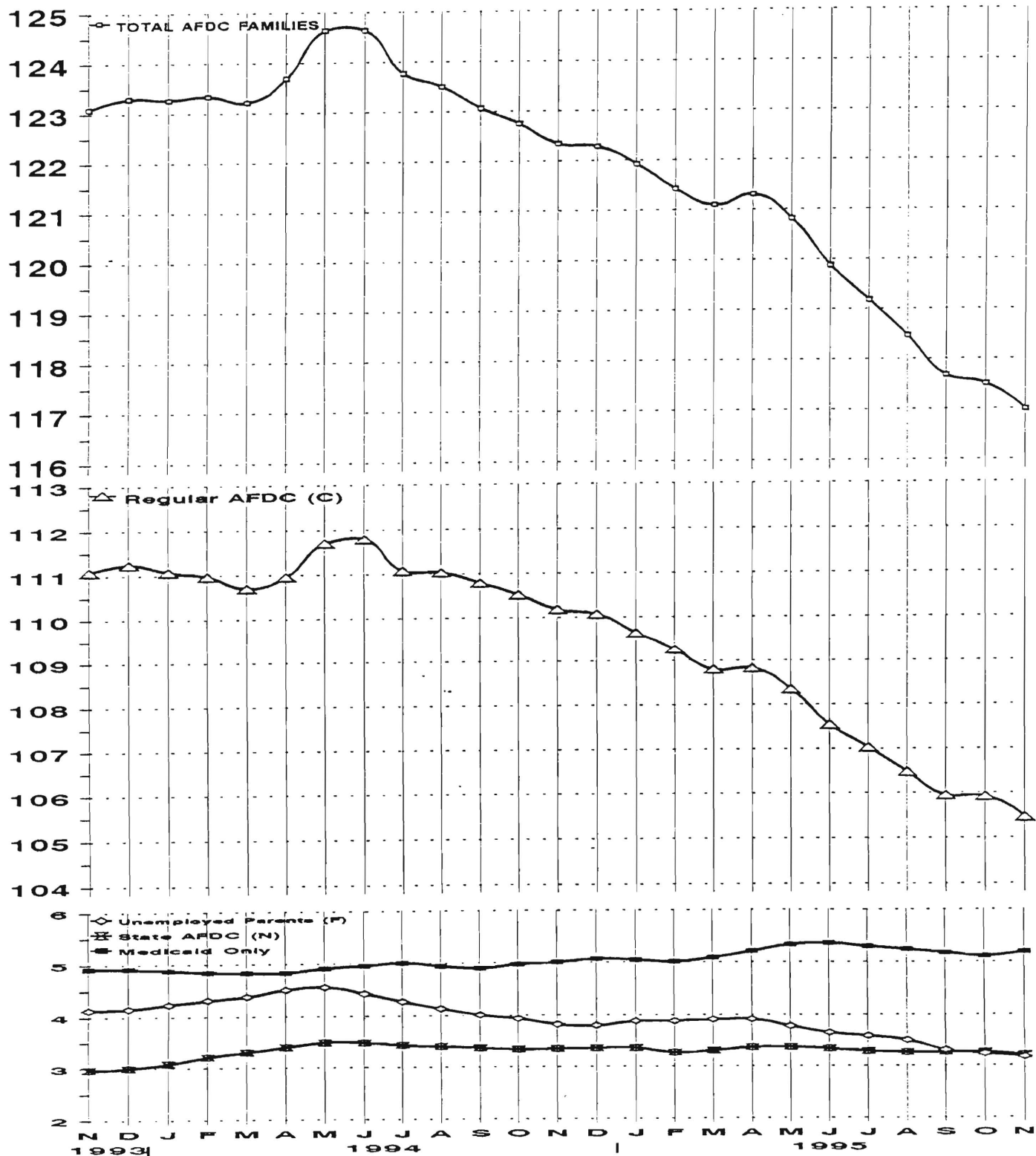
	Applications Approved	Termin- ations	Regular AFDC (C Segment)	Unemployed Parents (F)	State AFDC (N)	Medicaid Only	TOTAL AFDC
1993 Nov	6,774	6,902	111,072	4,131	2,969	4,916	123,088
Dec	5,590	5,462	111,231	4,152	2,997	4,915	123,295
AVERAGE (12 MONTHS)	5,760	5,688	110,942	4,365	2,860	5,012	123,178
1994 Jan	5,452	5,349	111,067	4,232	3,085	4,881	123,265
Feb	5,449	5,518	110,964	4,314	3,214	4,844	123,336
Mar	5,693	5,893	110,699	4,383	3,301	4,831	123,214
Apr	6,284	5,997	110,951	4,506	3,399	4,834	123,690
May	7,094	6,188	111,700	4,549	3,483	4,913	124,645
Jun	5,758	5,742	111,787	4,423	3,477	4,953	124,640
Jul	5,117	5,898	111,064	4,266	3,428	5,007	123,765
Aug	6,435	6,827	111,025	4,128	3,401	4,940	123,494
Sep	6,266	6,754	110,790	4,007	3,369	4,900	123,066
Oct	6,592	6,950	110,517	3,927	3,340	4,966	122,750
Nov	6,344	6,796	110,181	3,814	3,350	5,002	122,347
Dec	5,682	5,890	110,070	3,789	3,360	5,065	122,284
AVERAGE	6,014	6,150	110,901	4,195	3,351	4,928	123,375
1995 Jan	5,583	5,944	109,645	3,875	3,358	5,045	121,923
Feb	5,964	6,515	109,261	3,878	3,270	5,016	121,425
Mar	5,810	6,221	108,800	3,903	3,305	5,088	121,096
Apr	7,096	7,086	108,822	3,907	3,365	5,209	121,303
May	5,288	5,784	108,343	3,773	3,369	5,328	120,813
Jun	5,558	6,458	107,541	3,639	3,336	5,358	119,874
Jul	5,977	6,781	107,028	3,574	3,286	5,293	119,181
Aug	5,547	6,294	106,475	3,489	3,260	5,239	118,463
Sep	5,922	6,647	105,943	3,303	3,260	5,175	117,681
Oct	7,062	7,359	105,917	3,224	3,257	5,110	117,508
Nov	6,083	6,660	105,445	3,164	3,199	5,189	116,997
AVERAGE	5,990	6,523	107,565	3,612	3,297	5,186	119,660

Data Sources: Data is derived from NJ Division of Family Development's FAMIS report # FF-012.

GRAPH 4

Eligible Families Receiving AFDC

November 1993 through November 1995
(Thousands of Families)



New Jersey Department of Human Services
Division of Family Development

TABLE 6

FOOD STAMP Program State Summary

**NUMBER OF ATP'S ISSUED TO HOUSEHOLDS, PERSONS,
ADULTS AND CHILDREN AT THE END OF THE REPORT MONTH**

November 1993 through November 1995

	HOUSEHOLDS			TOTAL	TOTAL	PERSONS			
	AFDC	Other low income				AFDC	Other low income	Adults	Children
1993 Nov	114,180	100,295	214,475	519,932	360,125	159,807		241,029	278,903
Dec	114,348	102,790	217,138	521,307	360,858	160,449		241,989	279,318
AVERAGE (12 MONTHS)	113,235	100,374	213,609	515,793	357,762	158,032		238,605	277,188
1994 Jan	113,984	102,590	216,574	519,549	359,422	160,127		241,575	277,974
Feb	113,804	102,843	216,647	519,760	359,227	160,533		241,993	277,767
Mar	115,730	106,160	221,890	530,892	365,132	165,760		248,219	282,673
Apr	115,661	106,454	222,115	530,591	365,241	165,350		248,331	282,260
May	115,874	106,611	222,485	530,595	364,941	165,654		248,420	282,175
Jun	115,737	106,683	222,420	529,514	364,394	165,120		248,099	281,415
Jul	115,172	105,717	220,889	526,075	362,520	163,555		246,142	279,933
Aug	114,809	106,115	220,924	524,659	361,106	163,553		246,052	278,607
Sep	114,177	105,972	220,149	521,945	358,849	163,096		244,835	277,110
Oct	114,039	106,903	220,942	522,406	358,010	164,396		245,676	276,730
Nov	114,251	107,577	221,828	524,090	358,582	165,508		246,659	277,431
Dec	114,232	107,467	221,699	523,825	358,446	165,379		246,517	277,308
AVERAGE	114,789	105,924	220,714	525,325	361,323	164,003		246,043	279,282
1995 Jan	113,691	107,493	221,184	522,125	356,763	165,362		245,837	276,288
Feb	113,830	108,421	222,251	524,344	357,419	166,925		247,107	277,237
Mar	114,339	110,279	224,618	529,456	359,404	170,052		249,994	279,462
Apr	113,588	108,991	222,579	524,102	356,717	167,385		247,367	276,735
May	113,125	109,171	222,296	522,173	355,099	167,074		246,949	275,224
Jun	112,827	109,198	222,025	521,084	354,211	166,873		246,557	274,527
Jul	111,635	107,978	219,613	515,478	350,378	165,100		243,727	271,751
Aug	111,415	109,603	221,018	516,618	349,372	167,246		245,110	271,508
Sep	110,760	109,154	219,914	513,517	347,126	166,391		243,723	269,794
Oct	110,697	110,268	220,965	514,598	346,519	168,079		244,911	269,687
Nov	110,630	110,763	221,393	514,823	346,034	168,789		245,455	269,368
AVERAGE	112,412	109,211	221,623	519,847	352,640	167,207		246,067	273,780

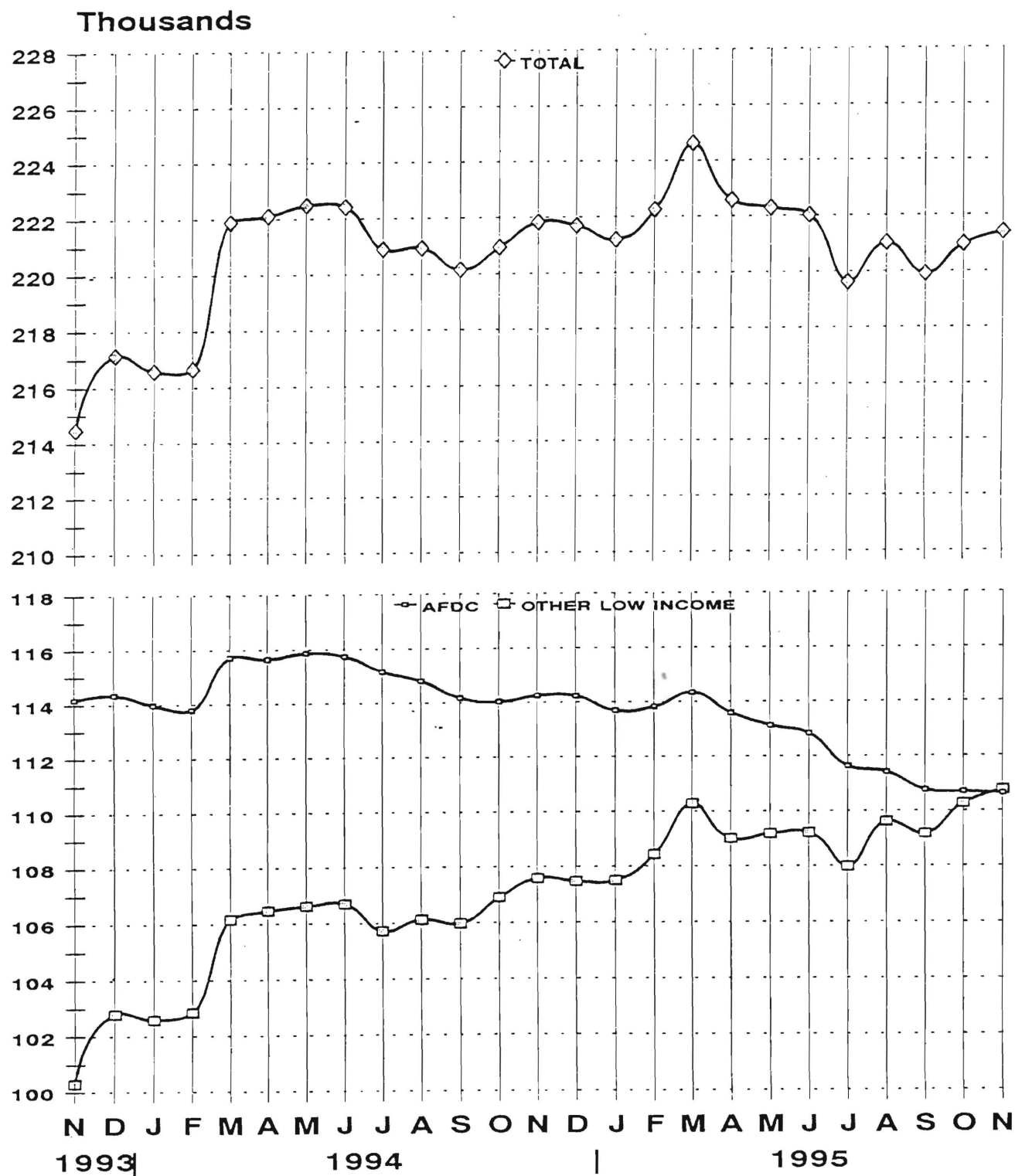
ATP - Authorization to Participate

Data Sources: Data is derived from NJ Division of Family Development's FAMIS report # FB-160.

GRAPH 5

Food Stamp Households

November 1993 through November 1995



GRAPH 6

Food Stamp Recipients

November 1993 through November 1995

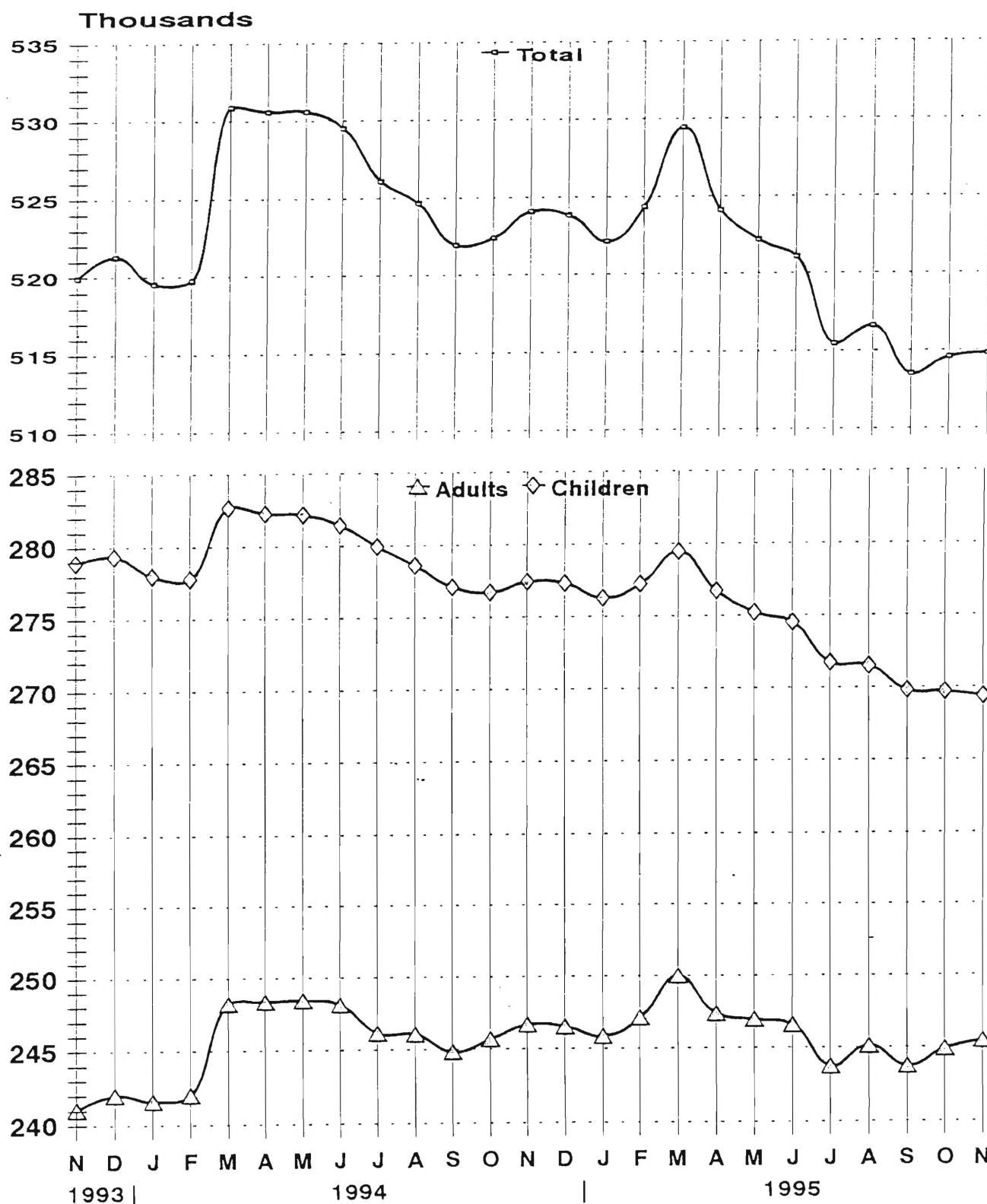


TABLE 7

EMERGENCY ASSISTANCE Program for AFDC recipients
State Summary

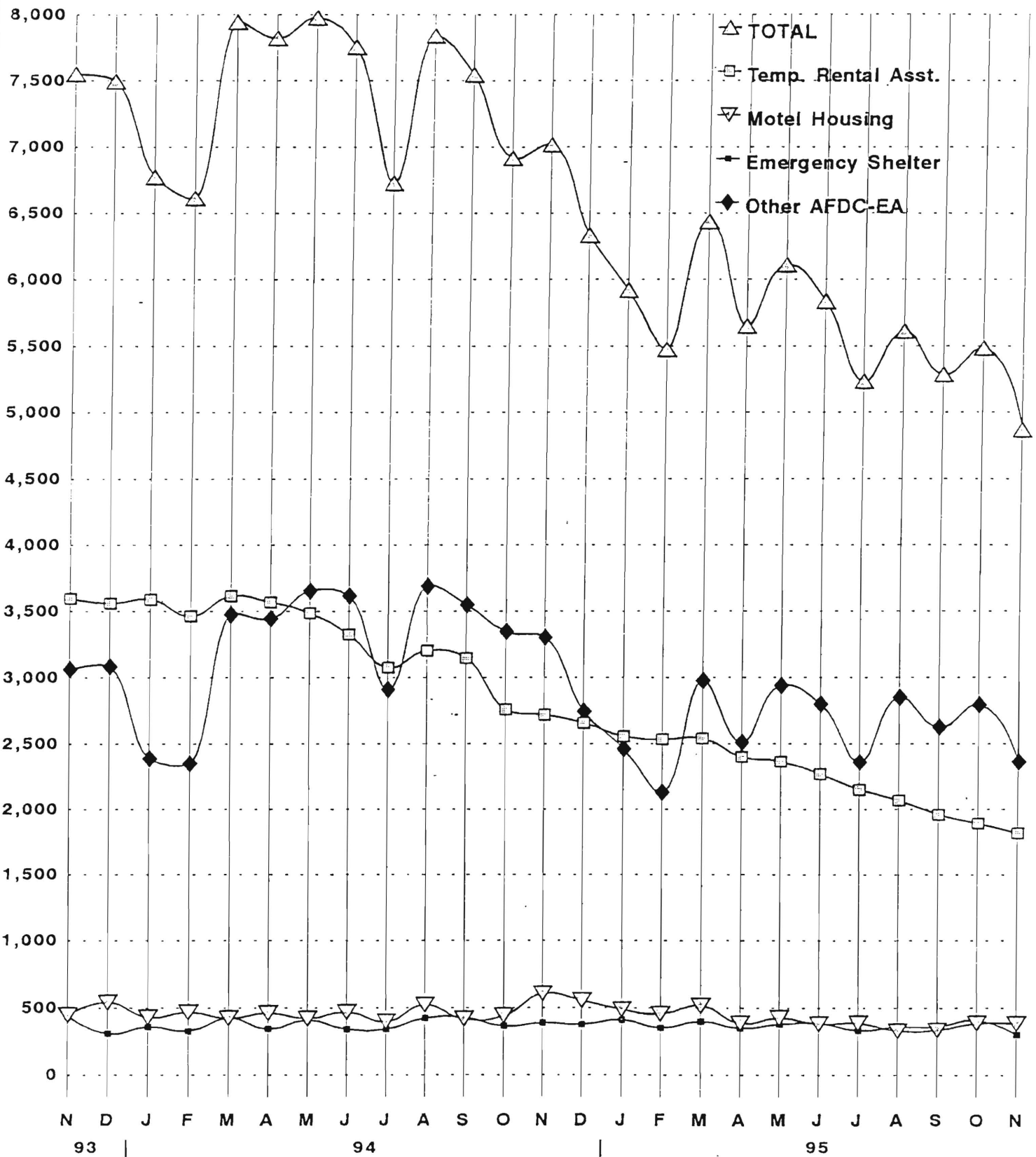
NUMBER OF ELIGIBLE FAMILIES RECEIVING EMERGENCY ASSISTANCE PAYMENTS
(UNDUPLICATED CASES)
NOVEMBER 1993 through NOVEMBER 1995

	Total families receiving EA	Temporary rental assist.	Motel Housing	Emergency Shelter	Other AFDC-EA
1993 NOV	7,550	3,597	450	441	3,062
DEC	7,496	3,561	541	311	3,083
1994 JAN	6,771	3,590	432	362	2,387
FEB	6,613	3,465	469	331	2,348
MAR	7,942	3,616	425	424	3,477
APR	7,821	3,568	462	345	3,446
MAY	7,977	3,488	423	411	3,655
JUN	7,755	3,326	469	343	3,617
JUL	6,727	3,075	400	344	2,908
AUG	7,840	3,204	520	426	3,690
SEP	7,545	3,147	418	430	3,550
OCT	6,914	2,759	442	366	3,347
NOV	7,018	2,720	604	391	3,303
DEC	6,335	2,658	554	379	2,744
Average	7,272	3,218	468	379	3,206
1995 JAN	5,921	2,557	487	413	2,464
FEB	5,475	2,535	456	354	2,130
MAR	6,437	2,542	516	402	2,977
APR	5,651	2,402	387	351	2,511
MAY	6,111	2,364	427	381	2,939
JUN	5,837	2,268	382	387	2,800
JUL	5,233	2,149	389	334	2,361
AUG	5,611	2,068	331	362	2,850
SEP	5,284	1,958	336	364	2,626
OCT	5,483	1,891	388	410	2,794
NOV	4,865	1,816	384	302	2,363
Average	5,628	2,232	408	369	2,620

Data Sources: Data is derived from NJ Division of Family Development FAMIS Report #FM-457.

GRAPH 7

AFDC Families Receiving Emergency Assistance November 1993 through November 1995



New Jersey Department of Human Services
Division of Family Development

TABLE 8
JOBS/FDP PARTICIPATION RATES BY MONTH
(PERCENT)

COUNTY	APR 94	MAY 94	JUN 94	JUL 94	AUG 94	SEP 94	OCT 94	NOV 94	DEC 94	JAN 95	FEB 95	MAR 95	APR 95	MAY 95	JUN 95	JUL 95	AUG 95	SEP 95	OCT 95	NOV 95
ATLANTIC	34.7	36.6	31.0	26.0	24.8	33.0	39.0	38.0	32.8	34.2	39.8	46.1	46.3	44.0	37.7	31.9	33.9	46.4	54.6	52.2
BERGEN	20.7	24.2	22.9	23.5	23.0	27.6	29.3	29.7	29.7	28.6	23.9	27.3	26.9	28.3	26.5	27.0	24.8	24.2	25.5	23.1
BURLINGTON	28.6	29.6	26.8	24.7	23.7	22.7	26.2	23.9	24.4	22.9	21.8	28.5	29.2	28.6	27.1	26.9	27.7	27.6	31.5	32.5
CAMDEN	16.0	17.6	13.8	12.6	11.1	14.3	18.5	18.3	15.5	11.7	13.6	16.3	15.7	12.9	11.3	9.8	9.5	15.1	17.1	16.8
CAPE MAY	7.2	11.8	6.9	4.4	6.3	5.8	10.4	7.3	7.5	5.5	6.0	7.2	7.9	10.9	9.0	6.3	6.5	11.7	11.4	11.5
CUMBERLAND	50.8	53.2	48.3	44.7	45.1	52.5	56.4	53.7	51.5	52.2	52.1	58.6	64.1	64.0	53.8	55.3	54.6	56.9	65.9	60.2
ESSEX	5.7	6.3	6.7	6.0	5.5	7.2	8.5	8.8	8.3	7.8	8.8	11.0	13.0	15.7	16.0	15.8	16.2	17.7	20.2	19.7
GLOUCESTER	23.6	20.7	17.6	16.2	15.8	20.0	24.0	25.5	24.2	22.8	28.1	31.6	28.7	26.4	20.7	21.5	22.0	19.5	25.3	24.1
HUDSON	19.0	19.7	18.1	17.0	15.7	17.9	19.5	20.0	21.1	19.6	18.1	22.9	23.8	25.4	23.8	20.8	21.2	23.8	26.0	25.4
HUNTERDON	13.3	17.5	15.0	13.3	11.1	13.4	14.2	13.5	16.1	11.5	26.2	25.8	26.1	30.6	23.5	26.6	25.2	34.3	42.7	45.8
MERCER	26.0	27.6	26.4	28.4	28.3	27.9	30.5	30.4	30.4	28.7	27.0	32.5	31.9	33.1	28.7	27.3	26.7	27.8	30.1	27.4
MIDDLESEX	16.2	17.9	17.4	16.3	16.5	17.1	20.8	18.2	18.8	18.8	16.8	16.9	16.3	17.4	15.1	19.2	22.0	23.6	27.5	29.3
MONMOUTH	25.7	26.0	25.2	23.2	22.3	23.7	29.2	28.2	27.8	27.3	26.8	29.9	29.6	29.1	27.2	27.7	24.5	26.2	27.8	25.6
MORRIS	22.6	23.1	18.6	17.3	13.7	18.7	21.7	22.2	22.4	14.4	19.5	22.9	31.9	42.0	52.9	71.0	71.7	70.7	64.4	63.3
OCEAN	13.2	12.7	10.8	10.6	9.0	9.9	13.4	16.7	18.1	15.8	18.6	23.6	26.4	25.0	22.3	22.1	25.4	28.6	28.9	28.6
PASSAIC	26.0	29.2	26.1	27.7	24.3	25.9	31.9	33.9	33.0	32.1	31.7	35.1	33.9	37.7	33.6	34.7	32.0	34.5	37.0	37.6
SALEM	49.8	50.3	26.7	21.2	19.8	32.2	44.8	44.2	38.3	36.7	41.7	46.6	50.0	48.4	26.7	26.3	29.4	45.3	51.7	52.4
SOMERSET	37.0	37.0	33.2	33.4	26.9	45.4	48.3	49.1	47.4	54.7	48.7	62.0	61.3	68.0	48.1	46.1	40.3	57.3	59.3	55.8
SUSSEX	33.7	42.0	38.3	19.7	23.0	39.2	42.6	48.7	49.6	40.2	43.3	48.2	45.3	41.7	26.1	19.0	27.7	48.4	57.5	67.2
UNION	24.6	25.8	23.9	24.2	21.8	27.9	29.5	28.7	28.6	27.7	26.0	29.6	28.9	31.4	28.6	26.3	25.2	28.4	31.4	29.0
WARREN	37.0	57.1	63.0	61.5	71.0	72.5	65.4	52.6	52.2	47.7	46.1	50.3	47.2	48.7	51.5	38.9	37.8	32.0	41.7	41.3
STATE	18.9	20.1	18.3	17.3	16.3	19.1	21.8	21.8	21.5	20.4	20.3	23.8	24.5	25.7	23.3	22.5	22.6	25.2	27.9	27.2

GRAPH 8

JOBS/FDP PARTICIPATION RATES (%)

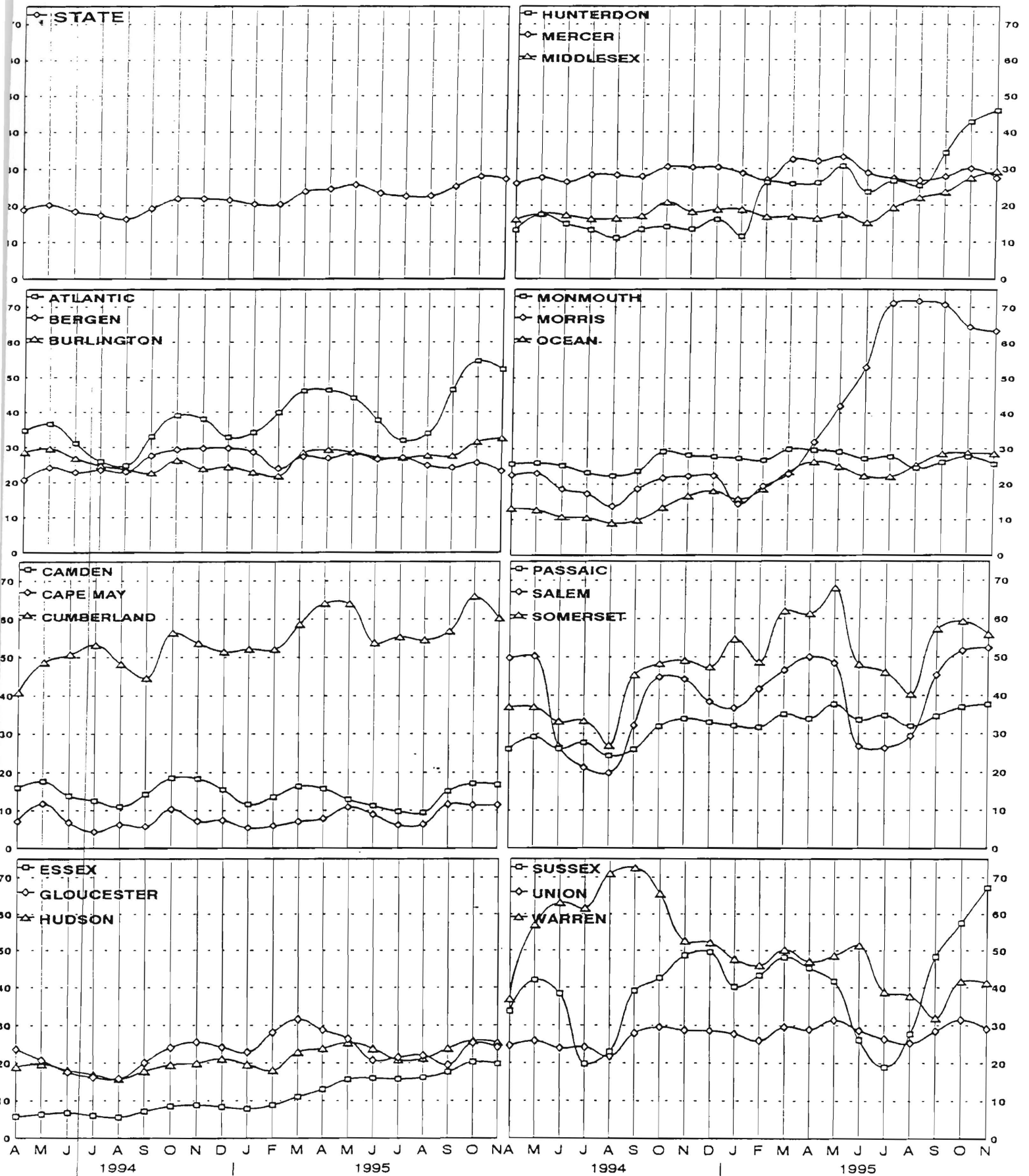


TABLE 9
GENERAL ASSISTANCE Program
State Summary

**NUMBER OF EMPLOYABLE AND UNEMPLOYABLE
RECIPIENTS DURING REPORT MONTH**
May 1993 through May 1995

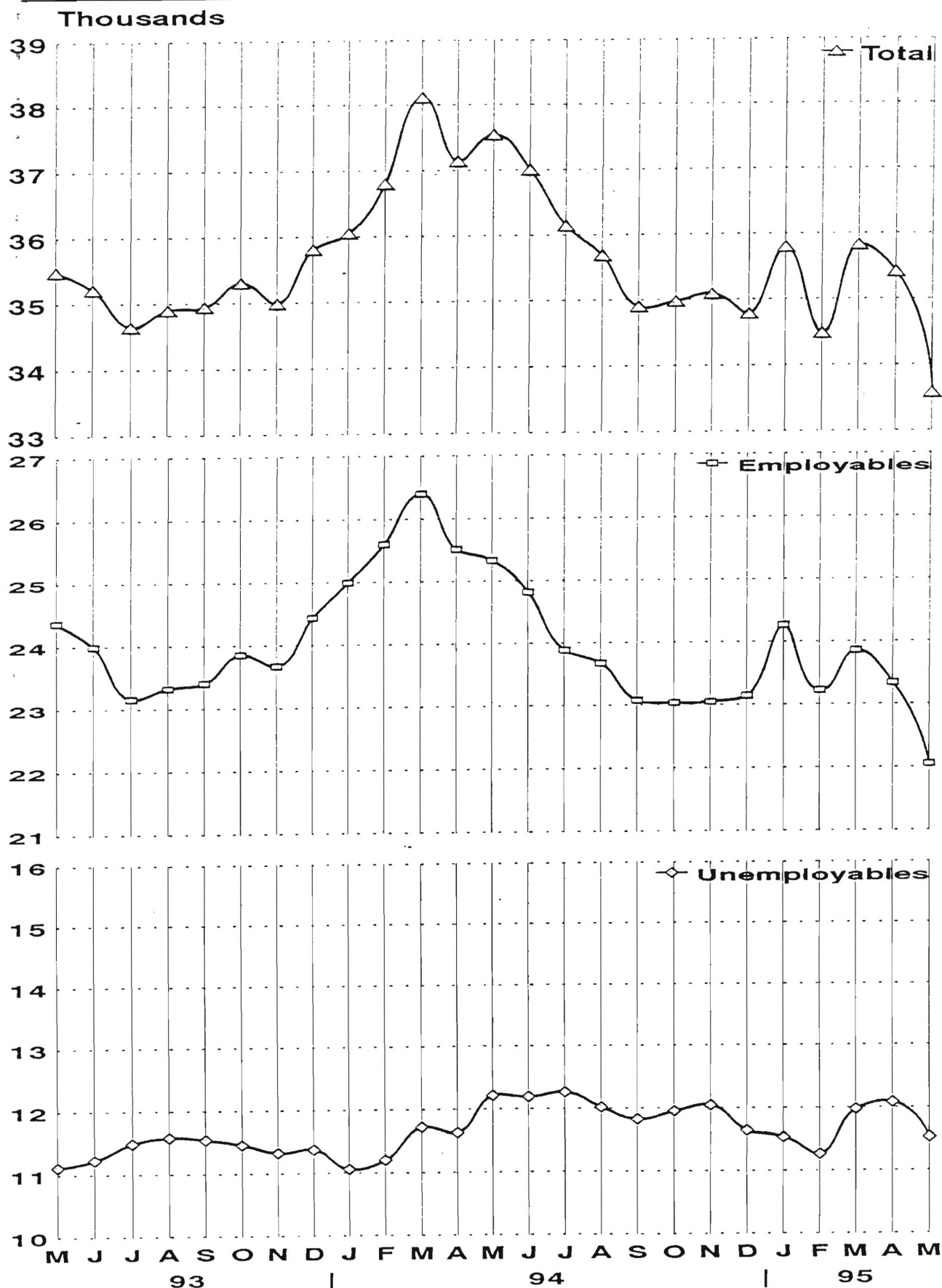
		Number of Persons Aided		
		Employables	Unemployables	Total
1993	May	24,370	11,113	35,483
	Jun	23,989	11,225	35,214
	Jul	23,156	11,488	34,644
	Aug	23,320	11,580	34,900
	Sep	23,402	11,542	34,944
	Oct	23,853	11,455	35,308
	Nov	23,668	11,324	34,992
	Dec	24,435	11,374	35,809
AVERAGE (12 mos)		24,250	11,374	35,624

1994	Jan	24,992	11,062	36,054
	Feb	25,600	11,202	36,802
	Mar	26,397	11,719	38,116
	Apr	25,512	11,629	37,141
	May	25,327	12,212	37,539
	Jun	24,814	12,190	37,004
	Jul	23,884	12,261	36,145
	Aug	23,671	12,018	35,689
	Sep	23,075	11,825	34,900
	Oct	23,031	11,950	34,981
	Nov	23,046	12,045	35,091
	Dec	23,142	11,642	34,784
AVERAGE		24,486	11,828	36,315

1995	Jan	24,262	11,537	35,799
	Feb	23,219	11,264	34,483
	Mar	23,855	11,976	35,831
	Apr	23,337	12,082	35,419
	May	22,046	11,527	33,573
AVERAGE		23,344	11,677	35,021

GRAPH 9 General Assistance Recipients

May 1993 through May 1995



New Jersey Department of Human Services

TABLE 10**CHILD SUPPORT AND PATERNITY**
State Summary**Child Support and Paternity Collections****\$1000's**

COLLECTION SOURCE	Federal Fiscal Years		Percent Change
	1994	1995	1994-1995
AFDC & FOSTER CARE			
Federal Tax	\$15,170.0	\$16,106.4	6.2%
State Tax	2,169.8	1,738.0	-19.9%
Unempl. Ins. Ben.	4,081.0	4,342.6	6.4%
Income Withholding	43,696.4	45,758.7	4.7%
Other/Own Behalf	17,729.3	18,258.4	3.0%
From Other States	3,303.5	3,401.5	3.0%
For Other States	5,612.7	7,009.9	24.9%
TOTAL COLLECTION	91,762.6	96,615.6	5.3%
NON- AFDC			
Federal Tax	\$6,288.4	\$7,011.0	11.5%
State Tax	2,434.1	2,086.7	-14.3%
Unempl. Ins. Ben.	13,514.8	14,415.7	6.7%
Income Withholding	227,505.1	260,768.1	14.6%
Other/Own Behalf	151,072.8	157,100.0	4.0%
From Other States	19,761.5	20,951.4	6.0%
For Other States	21,906.2	27,714.1	26.5%
TOTAL COLLECTION	442,482.9	490,047.0	10.7%
TOTAL			
Federal Tax	\$21,458.3	\$23,117.4	7.7%
State Tax	4,603.9	3,824.8	-16.9%
Unempl. Ins. Ben.	17,595.8	18,758.4	6.6%
Income Withholding	271,201.4	306,526.8	13.0%
Other/Own Behalf	168,802.1	175,358.4	3.9%
From Other States	23,065.0	24,352.9	5.6%
For Other States	27,518.9	34,724.0	26.2%
TOTAL COLLECTION	534,245.5	586,662.6	9.8%

Collection Source: Reflects Collections Recorded by County Probation Departments

Explanatory Notes

The Department of Human Services Division of Family Development provides basic income and an opportunity to achieve self-sufficiency for individuals and families served by the Division's programs. The Division provides leadership, direction and supervision to those public agencies responsible for administering those programs and plans for and develops policies to promote self-sufficiency.

AID TO FAMILIES WITH DEPENDENT CHILDREN (AFDC) - Financial assistance for dependent children and their natural or adoptive parents, or certain other relatives recognized as taking the place of a parent.

Regular AFDC (C Segment) - assistance when only one parent is in the home due to death or absence, or both parents are in the home but at least one is incapacitated.

Unemployed Parents (F Segment) - assistance when both parents are in the home, neither is incapacitated and the primary wage earner meets the federally defined criteria for unemployment.

State AFDC (N Segment) - assistance when both parents are in the home, neither is incapacitated, and the primary wage earner does not meet the federal definition of unemployment.

Medicaid Only - families no longer receiving AFDC financial assistance but remaining eligible for Medicaid under applicable provisions which extend coverage beyond period of AFDC assistance.

FOOD STAMP PROGRAM (FS) - Authorized by Congress as a nutritional supplement program to provide low income households with more food of greater variety and better nutrition. Program eligibility is based on household income, resources, and expenses for medical, shelter, and dependent care. CWA staff refer certain recipients to the New Jersey Department of Labor for participation in the Food Stamp Employment and Training Program.

EMERGENCY ASSISTANCE (EA) - Payments to those eligible for AFDC (also for General Assistance or Supplemental Security Income, not included here), authorized during the 30 consecutive days immediately following the emergency (defined as a substantial loss of shelter, food, clothing, or household furnishings by fire, flood or other similar disaster) or if the eligible individual or family is in an imminent or actual state of homelessness.

JOBS/FDP

JOB OPPORTUNITY AND BASIC SKILLS PROGRAM (JOBS) - Federally mandated work/training program for recipients of AFDC established by the Family Support Act of 1988 under Part F of Title IV of the Social Security Act.

FAMILY DEVELOPMENT PROGRAM (FDP) - Reform legislation enacted by the State Legislature in January 1992 to: build, strengthen, and support the family unit; encourage family formation; reduce the long-term aspects of welfare dependency; look to the needs of the family unit as a whole; emphasize education and training for all family members; maximize use of educational, training and employment resources; and develop genuine private sector job opportunities.

SNAPSHOT OF ACTIVITY AT POINT IN TIME - Status of activities as of the end of the month:

Total Non-Exempt JOBS/FDP Recipients - Calculation of the number of mandatory IV-F individuals (FAMIS report # FB304).

Employment Directed Activities (EDA) - From Activities Summary Report (OMEGA report # RM064). Unduplicated count of persons participating in **Training, Education, or Job Search**.

Participants in EDA, Receiving Support Services - From Issuance Disbursement Summary (OMEGA report # RM703). Total number of active participants who show receipt of **Training Related Expenses or Child Care**.

Participation Rate (JOBS/FDP) - Federally mandated calculation method, dividing the number of participants whose combined and averaged weekly hours of participation in qualifying activities equals or exceeds 20 hours per week by the total number of non-exempt IV-F recipients. As of the end of the month.

ACTIVITY FOR THE MONTH - Number of participants with the indicated activity during the month:

Participants with First Case Management Interview - From Activities Summary Report (OMEGA report # RM064).

Number of Persons Employed This Month, Still Receiving AFDC - From Activities Summary Report (OMEGA report # RM064).

Number of Persons Closed on FAMIS Due to Earnings - From FAMIS report # FM463.

Post AFDC and Receiving Child Care - Persons no longer in receipt of AFDC, but still receiving child care. From Issuance Disbursement Summary (OMEGA report # RM703).

New Jersey Department of Human Services
Division of Family Development

TABLE 11**GENERAL ASSISTANCE Program**

NUMBER OF EMPLOYABLE AND UNEMPLOYABLE RECIPIENTS DURING REPORT MONTH
COUNTIES AND 21 LARGEST MUNICIPALITIES

MAY 1995

County	Employables	Unemployables	Total	Municipality	Employables	Unemployables	Total
ATLANTIC	1,266	544	1,810	Asbury Park	195	99	294
BERGEN	543	537	1,080	Atlantic City	1,011	295	1,306
BURLINGTON	586	427	1,013	Bayonne	139	69	208
CAMDEN	2,043	1,046	3,089	Camden	1,608	588	2,196
CAPE MAY	159	120	279	East Orange	552	450	1,002
CUMBERLAND	353	224	577	Elizabeth	1,117	480	1,597
ESSEX	6,877	2,314	9,191	Hoboken	137	117	254
GLOUCESTER	195	219	414	Irvington	273	100	373
HUDSON	1,194	1,203	2,397	Jersey City	632	518	1,150
HUNTERDON	54	52	106	Lakewood	394	148	542
MERCER	1,867	783	2,650	Long Branch	240	98	338
MIDDLESEX	629	587	1,216	Montclair	215	101	316
MONMOUTH	837	768	1,605	Mount Holly	188	78	266
MORRIS	167	233	400	Newark	5,325	1,375	6,700
OCEAN	809	600	1,409	Orange	384	68	452
PASSAIC	2,285	600	2,885	Passaic	721	233	954
SALEM	166	102	268	Paterson	1,439	190	1,629
SOMERSET	92	143	235	Perth Amboy	147	116	263
SUSSEX	62	76	138	Plainfield	234	97	331
UNION	1,792	884	2,676	Trenton	1,732	661	2,393
WARREN	70	65	135	Vineland	194	114	308
NJ TOTAL	22,046	11,527	33,573	NJ TOTAL	16,877	5,995	22,872