

Community CONNECTION

FALL 2009

Update on I-295 construction



Beginning on Oct. 5, DRBA I-295 contractors closed the ramp from I-295 northbound to US 13 southbound. The ramp is scheduled to reopen in six months, however, the construction contract contains incentives for the contractor to reopen within 80 calendar days.

In the meanwhile, detours are posted with traffic being routed down and around the I-295/DE 9 interchange.

This construction activity is part of the \$26.8 million Phase III construction project on I-295 and associated ramps that began in June 2008. It is a collaborative effort between the Authority and the Delaware Department of Transportation and is designed to improve roadway safety and operational capacity while rehabilitating aging roadways, ramps and bridges. New traffic patterns are being created and bridges no longer needed are being removed as part of the project.

An important element of the project is eliminating a traffic move in which vehicles have cut across I-295 northbound lanes between I-95/I-495 and US 13. In addition, 1.6 miles of I-295 northbound will be improved to meet current federal standards.

For more information on the construction project, please visit www.drba.net/road_work_info.pdf.



NEWLY TENANTED — Truth Recycling, LLC, is leasing this building, known as the Tomwar Building, at Cape May Airport.

New tenant lands at Cape May Airport



CAPE MAY, NJ — Truth Recycling, LLC, is planning to open the region's first electronics and solar panel recycling center at the Cape May Airport in Lower Township. The planned facility will be located in the DRBA's Tomwar Building which contains 14,000 square feet of warehouse/manufacturing space and 1,248 square feet of office space. The firm expects to create approximately a dozen jobs when its new facility here becomes operational.

According to Frank W. Minor, Deputy Executive Director of the DRBA, one of the Authority's goals has been to be a growth catalyst, investing its resources to create

and retain jobs for the region. The Authority invested approximately \$35,000 in improvements to the property.

The new complex will support the electronic recycling needs of Cape May County and provide a critical role in supporting the country's emerging solar industry. The principals of the firm are experienced in recycling, having operated Brick Recycling in Ocean County, NJ, for more than 10 years.

The DRBA Commissioners approved a five-year lease on the airport property including the option of Truth Recycling renewing the agreement for two periods of five years each.



OUTREACH — DRBA Deputy Executive Director Frank W. Minor, seated fifth from the left in this photo, has been concentrating on creating a comprehensive outreach and cooperation network with government officials throughout the region. Shown here at one such meeting with Wilmington city officials are: (from left) Michelle Griscorn-Collins, DRBA property manager; Ken Hynson, DRBA community outreach administrator; Joe DiPinto, Wilmington director of economic development; The Hon. James Baker, Wilmington mayor; Mr. Minor; A. J. Crescenzi, DRBA business development manager; John Sarro, DRBA manager of airports marketing, grants and cultural programs; and Anna Marie Gonnella, DRBA administrator of marketing and governance.



DELAWARE RIVER & BAY AUTHORITY

JON S. CORZINE
Governor of New Jersey

JACK MARKELL
Governor of Delaware

COMMISSION MEMBERS

James N. Hogan, Chairman
Scott A. Green, Vice Chairman
Susan Atkinson DeLanzo
Edward W. Dorn
Richard W. Downes
Niels S. Favre
Samuel E. Lathem
William E. Lowe, III
Terri C. Murphy
Ceil Smith
Gary F. Traynor
Douglas L. VanSant

EXECUTIVE DIRECTOR
James T. Johnson, Jr., P.E.

DEPUTY EXECUTIVE DIRECTOR
Frank W. Minor

EDITOR
James E. Salmon

Community Connection is a publication of the Delaware River and Bay Authority. For further information, please contact the DRBA at PO Box 71, New Castle, DE 19720, call 302.571.6300, fax 302.571.6367, visit our website at www.drba.net, or email us at contactus@drba.net.

DRBA welcomes new commissioner *VanSant is resident of Bridgeton, NJ*

ADMINISTERING — *Douglas L. VanSant is sworn in as a DRBA Commissioner by NJ State Senator Stephen M. Sweeney prior to a Commission meeting in July. Mr. VanSant's wife and two sons watch as the new Commissioner takes the oath of office.*



NEW CASTLE, DE — The DRBA Commission welcomed a new member in July when Douglas L. VanSant of Bridgeton, NJ, was sworn into office by New Jersey State Senator Stephen M. Sweeney prior to the Authority's monthly committee meetings. Sen. Sweeney was joined by fellow 3rd District officials, Assemblyman John Burzichelli and Assemblywoman Celeste Riley.

"I am honored that Governor Jon Corzine selected me to represent and serve the residents of Cumberland County and the State of New Jersey," VanSant said.

A regional manager in the Vineland office of the New Jersey Motor Vehicle

Commission, Commissioner VanSant began his professional career in the U.S. Army. Following his military service, Mr. VanSant graduated from the New Jersey State Police Academy and began a lengthy career in law enforcement with the State Police.

As a Bridgeton city councilman, Mr. VanSant was council president for three of his eight years on the council. He has participated in a number of civic organizations including the Cumberland County Juvenile Justice Committee and the Cumberland County College Law Enforcement Advisory Board.

Mr. VanSant resides in Bridgeton with his wife and two sons.

Gregory T. Chambers named DRBA manager of equal employment opportunity and diversity



NEW CASTLE, DE — Gregory T. Chambers has been selected to serve as the Authority's new manager of equal employment opportunity and diversity.

As manager, Mr. Chambers has a number of responsibilities, including overseeing all recruitment programs, analyzing affirmative action plans, investigating alleged employment discrimination complaints, developing educational programs related to diversity and equal opportunity and monitoring employment case law.

"Gregory Chambers has an impeccable career in public service and work in the community," said James T. Johnson,

DRBA executive director. "We are fortunate to have someone of his caliber and stature and I know his significant record of accomplishments will continue."

For the past 24 years, Mr. Chambers **CHAMBERS** had served as the State of Delaware's EEO/AA manager. He also administered Delaware's Agency Aide and Selective Placement programs. For 13 years prior to his state employment, Mr. Chambers worked for the City of Wilmington in a variety of positions, including director of community affairs.



Celebrating 13 million vehicle crossings



MAKING RECORDS — Dr. Carole Jones, a veterinarian from Ridgewood, NJ, was honored for being the 13th million vehicle customer to use the Ferry service since its inception in 1964. Dr. Jones and her canine companions were on their way to Dewey Beach, DE, on Sept. 15 when Captain Bryan Helm, left, and Director of Ferry Operations Heath Gehrke (right) presented Dr. Jones with the award. The Ferry operates year round between Victorian Cape May and historic Lewes and has carried more than 35 million passengers.



Take a break from the ordinary.

Relax. Stretch your legs. Take in the sights and sounds of the Delaware Bay. It's the best break in travel. www.CMLF.com or call 800.643.3779



Take a Break from the Ordinary campaign promotes benefits of Cape May-Lewes Ferry



CAPE MAY, NJ —A new promotional effort focuses on the benefits of using the for the Cape May-Lewes Ferry for vacation travel along the Eastern seaboard as well as encouraging both residents and tourists to use the service to get to events across the Delaware Bay.

"Take a Break from the Ordinary" promotes ridership, increases awareness of the ferry, and re-establishes the ferry as an exciting experience, not simply as a mode of transportation.

The CMLF's marketing strategy employs both print advertising in AAA pub-

lications, internet key word searches on Google and banner ads on Facebook. "Using both mediums, we'll be able to track the program's effectiveness," noted the CMLF's director, Heath Gehrke.

The Ferry is an integral component in twin capes tourism. Using posters, billboards, e-letters and print media, the new campaign targets residents and vacationers by highlighting 30 regional events scheduled for the coming months.

Information about these events and others and the Ferry service itself are available on the ferry's website, www.cmlf.com.

Biking by Ferry to regional trails



CAPE MAY, NJ — This past summer, a resident of Virginia recreated his bicycle crossing of the Delaware Bay on the Cape May-Lewes Ferry 45 years to the day after his first trip, which was also the first time a bicycle made the Ferry crossing.

On July 14, 1964, when Neil Jackson was 15 years old, he rode his bicycle from Barrington in Camden County, NJ, to the Cape May Terminal in order to make a surprise visit to his grandmother in Lewes, DE. He paid 50 cents for his crossing, the same as a foot passenger would have paid.

Today, 45 years after that first bicycle crossing, the CMLF still encourages cyclists to use the Ferry to cross Delaware Bay for recreational purposes. The fare for bicycle and rider is still the same as a foot passenger's.

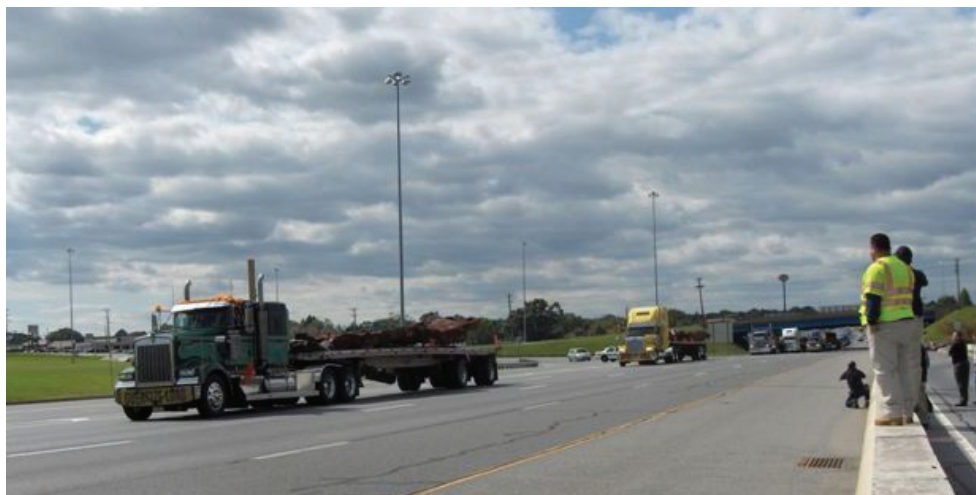
Although the Ferry typically transports more than 300 bicyclists each month during the summer season, there was an increase in bicycle traffic in 2009, which officials attribute to an increase in eco-tourism and improved local bike trails. The CMLF also plans to improve the access road to the Cape May Terminal, including a separate bike lane.

One of Delaware's bicycle attractions is a 6-mile-long trail on a former rail line that connects Lewes and Rehoboth Beach. In New Jersey, the 46-mile Cape May Shoreline Ride is considered moderately easy.



REMEMBERING — Neil Jackson, right, shows off the commemorative certificate celebrating the 45th anniversary of bicycles crossing the Bay by the Ferry.

DRBA
P.O. Box 71
New Castle, DE 19720



World Trade Center remnants travel to New York City across Delaware Memorial Bridge



On September 28, a convoy of 25 flatbed tractor-trailers carrying twisted steel from the World Trade Center drove across the Delaware Memorial Bridge on their way to Kennedy International Airport in New York City.

The large procession of trucks, traveling non-stop to New York, left around 10:30 a.m. from the National Institute of Standards and Technology in Gaithersburg, Maryland.

For the past seven years, the steel had been undergoing forensic analysis as part of the comprehensive investigation into the collapse of the Twin Towers. The contents carried by the trucks were bound for Hangar 17 at JFK to be preserved along with other artifacts recovered from the World Trade Center towers.

Oyster project lauded by White House



Coastal America and the Civil Works Division of the U.S. Army awarded plaques and certificates to each of the Delaware Bay Oyster Restoration Task Force's 12 member-organizations, including the DRBA, on October 4.

The Oyster Restoration Project, an ongoing effort to revitalize Eastern oysters in the Delaware Bay, was honored with a 2008 Coastal America Partnership Award, the only environmental award of its kind given by the White House. The award specifically recognized the collaborative effort that was needed to successfully restore the Bay's population of oysters.

The recognition ceremony took place on Coast Day, at the University of Delaware's Sharp Campus in Lewes.

Since 2005, the Delaware Bay Oyster Restoration Task Force has strategically placed, or "planted," over 2.1 million bushels of clam and oyster shells onto historic reefs.