

April 2022 Traffic Report

AVIATION DEPARTMENT (Data As Of 6/8/2022 1:06:51 PM)

REGION



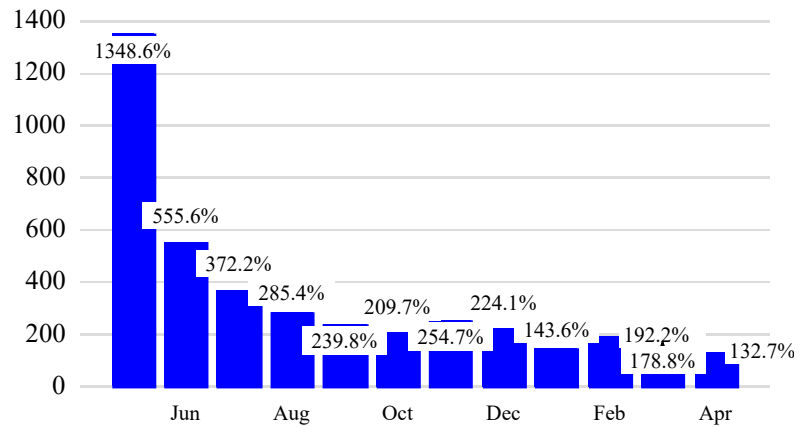
Revenue Passengers

	Curr Month	% Change
	10,808,274	132.7% ▲
Domestic	7,715,456	113.5%
International	3,092,818	200.2%
Non-Revenue	266,554	78.2%

Load Factors	Curr Month
Domestic	81.7%
International	75.7%

79.9%
Avg Load Factor

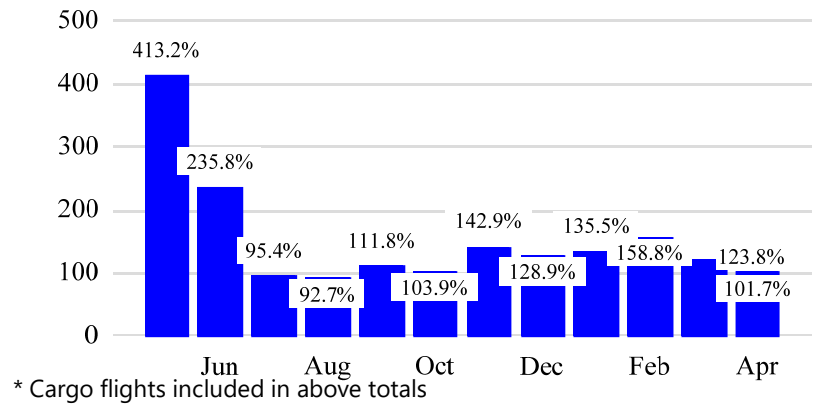
Year over Year % Change in Revenue Passengers - 12 Months



Total Flights

	Curr Month	% Change
	100,305	98.0% ▲
Excl GA	97,194	101.7% ▲
Domestic	76,964	106.7%
International	20,230	84.8%
Gen Aviation	3,111	25.8%
Cargo Flights*	3,501	-5.7%

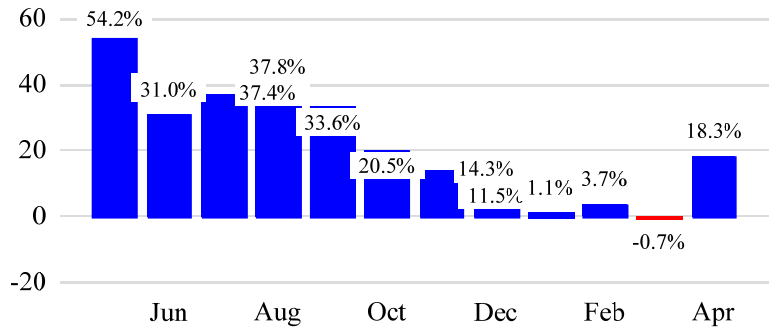
Year over Year % Change in Total Flights (Excl GA) - 12 Months



Cargo (Short Tons)

	Curr Month	% Change
	226,392	18.3% ▲
Domestic	82,279	-3.0%
International	144,114	35.2%
Mail	11,940	-26.1%

Year over Year % Change in Cargo - 12 Months



Top 5 Declines in Revenue Passengers by Airline

Airline	Pax Decline	% Decline
FRONTIER AIRLINES	(49,325)	-56.0%
EASTERN	(2,085)	-80.0%
EVA	(386)	-20.0%
ETHIOPIAN AIRLINES	(337)	-5.0%

Top 5 Increases in Revenue Passengers by Airline

Airline	Pax Increase	% Increase
DELTA	1,503,312	152.0%
UNITED	1,457,128	122.0%
AMERICAN	933,746	146.0%
JETBLUE AIRWAYS	786,932	78.0%
ALASKA AIRLINES	153,940	290.0%

Airport Summary Statistics

JFK Summary

	Current Month	YoY %
Total Revenue Pax	4,490,989	150.0
Total Flights Including GA	34,850	77.0
Total Cargo (Short Tons)	159,995	26.2

EWR Summary

	Current Month	YoY %
Total Revenue Pax	3,714,401	93.0
Total Flights Including GA	33,929	83.0
Total Cargo (Short Tons)	63,958	4.7

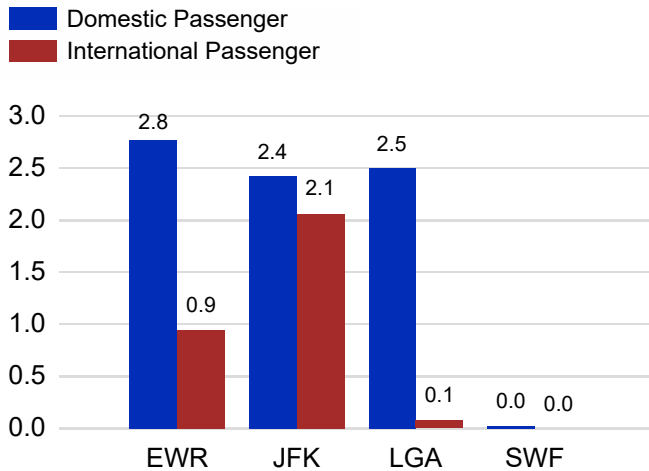
LGA Summary

	Current Month	YoY %
Total Revenue Pax	2,580,140	180.0
Total Flights Including GA	29,262	179.0
Total Cargo (Short Tons)	612	13.5

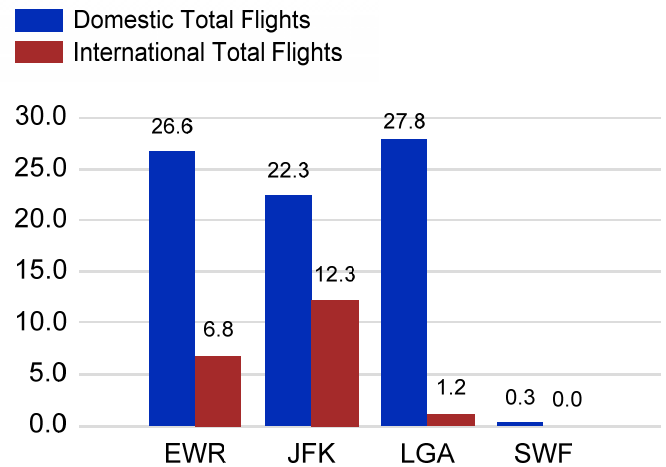
SWF Summary

	Current Month	YoY %
Total Revenue Pax	22,744	218.0
Total Flights Including GA	2,264	9.0
Total Cargo (Short Tons)	1,828	-38.9

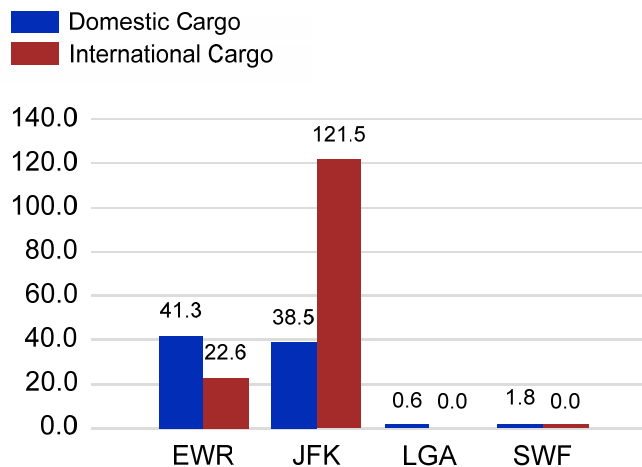
Total Passengers by Airport (Millions)



Total Flights by Airport (Thousands)



Total Cargo by Airport (Thousands of Short Tons)



12 Months Ending Passenger & Freight Statistics

Top 20 Airlines Ranking by Passengers & Freight: 12 Months Ending Apr 2022

Airline Name	Domestic	International	Total Pax	% of Tot	Airline Name	Short Tons	% of Tot
UNITED	19,023,365	5,351,049	24,374,414	25.13%	FEDERAL EXPRESS	438,054	18.08%
DELTA	19,631,280	3,181,694	22,812,974	23.52%	UNITED	219,954	9.08%
JETBLUE AIRWAYS	12,876,027	4,998,964	17,874,991	18.43%	UNITED PARCEL	212,151	8.76%
AMERICAN	11,387,054	1,801,812	13,188,866	13.60%	DELTA	98,175	4.05%
SPIRIT AIRLINES	3,215,296	0	3,215,296	3.31%	KALITTA AIR LLC	85,001	3.51%
SOUTHWEST AIRLINES	2,041,523		2,041,523	2.10%	AMERICAN	84,490	3.49%
ALASKA AIRLINES	1,469,266		1,469,266	1.51%	ATLAS AIR	78,203	3.23%
FRONTIER AIRLINES	923,022	54,549	977,571	1.01%	AIR TRANSPORT INT'L.(BAX Inc.)	71,832	2.96%
EMIRATES AIRLINES		645,967	645,967	0.67%	CARGOLUX AIRLINES	66,615	2.75%
AIR CANADA		631,414	631,414	0.65%	KOREAN	63,226	2.61%
TURKISH AIR		583,865	583,865	0.60%	ITA (formerly ALITALIA)	58,379	2.41%
Avianca Costa Rica		528,415	528,415	0.54%	CHINA AIRLINES (CAL)	55,725	2.30%
BRITISH AIRWAYS		500,587	500,587	0.52%	ABX AIR INC	52,461	2.16%
AIR FRANCE		482,128	482,128	0.50%	CATHAY PACIFIC	43,896	1.81%
LUFTHANSA		436,496	436,496	0.45%	LUFTHANSA CARGO	36,300	1.50%
QATAR AIRWAYS		390,688	390,688	0.40%	TURKISH AIR	32,383	1.34%
COPA AIRLINES		377,112	377,112	0.39%	SAUDI ARABIAN AIRLINES	31,496	1.30%
VIRGIN ATLANTIC		364,971	364,971	0.38%	VIRGIN ATLANTIC	30,163	1.24%
EL AL		329,533	329,533	0.34%	AIR FRANCE	28,347	1.17%
AEROMEXICO		320,984	320,984	0.33%	EVA	27,777	1.15%

Passengers & Freight by Market - 12 Months Ending

Market	Passengers	Freight (Short Tons)
TRANSATLANTIC	12,142,412	923,016
CANADA	936,940	5,361
CARIBBEAN + BERMUDA	6,966,605	14,957
CENTRAL AND SOUTH AMERICA	3,368,642	51,005
DOMESTIC	68,608,938	1,039,173
MEXICO	2,072,593	10,279
TRANSPACIFIC	444,073	369,705
PUERTO RICO	2,454,834	9,705

Additional Data

Airline Schedules (ADI): Non-Stop Destinations

	Region	Flights (Daily)	Cities
Domestic	Domestic	2495.0	110
	Puerto Rico	36.0	3
	Total	2,531.0	113.00
International	Canada	98.2	5
	Caribbean & Bermuda	160.4	24
	Central & South America	80.1	17
	Mexico	38.6	5
	Trans-Atlantic	276.5	52
	Trans-Pacific	16.2	7
	Total	670.1	110.00
Total		3,201.1	223.00

Airline Schedules (ADI): Carriers & Aircraft Type

	Aircraft Type	Flights (Daily)	Carriers
Domestic	Commuter	1032.8	4
	General Aviation	5.8	1
	Narrow Body	1420.8	10
	Wide Body	71.6	4
	Total	2,531.0	19.00
International	Commuter	87.3	5
	Narrow Body	301.4	21
	Wide Body	281.4	49
	Total	670.1	75.00
Total	Total	3,201.1	94.00

Passenger Demographics (ACI ASQ Surveys - 2021)

Connect		Trip Type		Gender	
Local Origin/Destination	78.6%	Business	14.0%	M	49.6%
Connecting	21.4%	Leisure	86.0%	F	50.4%
Transport Mode		Annual Flights		Residency	
Bus/Shuttle	4.7%	1-2	61.5%	United States	81.0%
Other	18.7%	3-5	24.9%	Other	19.0%
Private/Company Car	37.5%	6-10	9.0%		
Rail/Subway	7.3%	11-20	2.8%		
Rental Car	4.6%	21+	1.8%		
Taxi/Limo	27.2%				

Ground Transportation

	Curr Month	% Change		Curr Month	% Change
<i>Paid Parked Cars</i>	385,666	76.9	<i>Total Air Train Passengers</i>	1,226,257	33.7
<i>GTC Bookings</i>	0		<i>Paid Howard Beach Passengers</i>	95,725	160.7
<i>Airport Coach Passengers</i>	25,179	349.6	<i>Paid Jamaica Passengers</i>	414,112	238.0
<i>Taxis Dispatched</i>	355,156	191.3	<i>Paid EWR Passengers</i>	168,910	156.7
			<i>On-Airport (Unpaid) Passengers</i>	1,933,394	179.3

Airlines for American Carriers (USA)

	Curr Month	% Change
<i>Freight:revenue ton miles (000)</i>	0	

Regional Airports: Other

	Curr Month	% Change
<i>TEB flight movements</i>	12,689	18.2
<i>ISP Total passengers</i>	0	-100.0
<i>HPN Total passengers</i>	131,616	26.3